

DAFTAR PUSTAKA

American Cancer Society (ACS). Cancer facts and Figure. Atlanta American Cancer Society, 2018.

Bland KI, Copeland EM. Editors. The Breast Comprehensive Management of Benign and Malignant Diseases. Philadelphia. WB Saunders company. 2009.

Box, B.A., and Russel, C.A. 2004. Breast Cancer; in Manual of Clinical Oncology, 5th ed. Los Angeles: Lipincott Williams & Wilkins. p. 234- 253

Compton, Carolyn C., Byrd, David R., Garcia-Aguilar, Julio., Kurtzman, Scott H., Olawaiye, Alexander., *and* Washington, Mary Kay. 2012. AJCC Cancer Staging Atlas Second Edition. Springer Science+Business Media, LLC , 32 : 419-440.

Davis, L.V., Rose, David P., Gadiyaram, Vijaya., Ducatman, Barbara., Hobbs, Gerald., Hazard, Hannah., Kurian, Sobha., and Abraham, Jame. 2014. Breast Cancer Pathology, Receptor Status, and Patterns of Metastasis in a Rural Appalachian Population. Hindawi Publishing Corporation

Desen, W. 2008. Buku Ajar Onkologi Klinis, edisi 2, Jakarta : Balai Penerbit Fakultas Kedokteran Universitas Indonesia (p.365-383).

DeVita, V.T., Lawrence, T.S., and Rosenberg, S.A. 2008. Cancer- principles and practice of oncology 8th ed. Lippincott Williams & Wilkins.

Greene FL, Page DL, Fleming ID, Fritz AG, Balch CM, Haller DG, et al Editors. The AJCC Cancer Staging Manual. New York. 7 th Edition. 2010.

Goldhirsch, A., Wood, W.C., Coates, A.S., Gelber, R.D., Thurliman, B., and Senn, H.J. 2011. Strategies for subtypes — dealing with the diversity of breast cancer : highlights of the St Gallen International Expert Consensus on the Primary Therapy of Early Breast Cancer 2011. *Annals of Oncology*, (22), 1736–1747

Hamdani W. (2004). Profil Gena HER2/Neu pada Penderita Kanker Payudara di Makassar [Karya Akhir Pendidikan Spesialisasi Bedah Onkologi FK-Unhas]. Makassar: Universitas Hasanuddin.

IARC, 2020. Globocan 2020 : Estimated Cancer Incidence, Mortality And Prevalence Worldwide In 2020. <https://gco.iarc.fr/today/data/factsheets/cancers/20-Breast-fact-sheet.pdf>
Globocan (December), 2020. Retrieved From <https://gco.iarc.fr>

Inwald, et al.(2013). Ki-67 is a prognostic parameter in breast cancer patients : results of a large population-based cohort of a cancer registry. 139:539-552

K, Anders, Carey, dkk. 2009. Breast Cancer Before Age 40 Years. NIH Public Access Semioncol vol 36, pp. 237-49

Kemenkes, 2019. Beban kanker di Indonesia

[https://pusdatin.kemkes.go.id/download.php?file=download/pusdatin/infodatin/](https://pusdatin.kemkes.go.id/download.php?file=download/pusdatin/infodatin/Infodatin-Kanker-2019.pdf)

Infodatin-Kanker-2019.pdf. Diunduh pada 13 Agustus 2020.

Kenemans P. , Verstraeten R.A., Verheijen R.H.M. 2004. Oncogenic pathways in hereditary and sporadic breast cancer. The European Menopause Journal 2004

Keyhani M, Nasizadeh S, Dehghannejad A; Serum CA 15-3 Measurement in Breast Cancer Patients Before and After Mastectomy, Archives of Iranian Medicine, Volume 8, Number 4, 2005;263-66.

Lerebours F, Lidereau R. 2002. Molecular alterations in sporadic breast cancer. Critical Reviews in Oncology/Hematology 44 (2002) 121–141

Li, F., Wu, S., Zhou, J., Sun, J., Lin, Q., Lin, H., Guan, X., He, Z. (2014). Prognostic Value of Ki-67 in Breast Cancer Patients with Positive Axillary Lymph Nodes: A Retrospective Cohort Study. PLOS ONE, 9(2), e87264. doi:10.1371/journal.pone.0087264

Madani, S.H., Payandeh M, Sadeghi M, Motamed H, Sadeghi E. The correlation between Ki-67 with other prognostic factors in breast cancer: A study in Iranian patients. *Indian J Med Paediatr Oncol.* 2016 Apr-Jun; 37(2): 95–99.
doi: 10.4103/0971-5851.180136

Manuaba, T.W. 2010. *Panduan Penatalaksanaan Kanker Payudara. Panduan Penatalaksanaan Kanker Solid Peraboi 2010.* Jakarta: Sagung Seto. h. 17-48.

McPherson, K., Steel, C.M. and Dixon, J.M. 2000. ABC of Breast Diseases, Breast Cancer-Epidemiology, Risk Factors, and Genetics. *British Medical Journal.* 321: 624-628.

Molino A, Micciolo R, Turazza M, Bonetti F, Piubello Q, Bonetti A, Nortilli R, Pelosi G, Cetto GL. 1997. Ki-67 Immunostaining in 322 Primary Breast Cancers: Associations with Clinical and Pathological Variables and Prognosis. *Int. J. Cancer (Pred. Oncol.):* 74, 433–437 (1997).
[https://doi.org/10.1002/\(SICI\)1097-0215\(19970822\)74:4%3C433::AID-IJC12%3E3.0.CO;2-A](https://doi.org/10.1002/(SICI)1097-0215(19970822)74:4%3C433::AID-IJC12%3E3.0.CO;2-A)

Nishimura R, Osako T, Okumura Y ; Ki-67 as a prognostic marker according to breast cancer subtype and a predictor of recurrence time in primary breast cancer. *Experimental and Therapeutic Medicine* 1: 747-754, 2010. May 31,

2010

Pardali K , Moustakas A . 2007. Actions of TGF-beta as tumor suppressor and pro-metastatic factor in human cancer. *Biochimica et Biophysica Acta* [08 Jul 2007, 1775(1):21-62]

Park Silvia , Ahn Hee Kyung, ParkLee Chun. 2012. Implications of Different CA 15-3 Levels according to Breast Cancer Subtype at Initial Diagnosis of Recurrent or Metastatic Breast Cancer. *Oncology* 2012;82:180–187

Petrelli, F., Viale, G., Cabiddu, M., & Barni, S. (2015). Prognostic value of different cut-off levels of Ki-67 in breast cancer: a systematic review and meta-analysis of 64,196 patients. *Breast Cancer Research and Treatment*, 153(3), 477–491. doi:10.1007/s10549-015-3559-0

Ragab H.M, Samy N, Afify M, Maksoud N.A., Shaaban H.A.M. 2018. Assessment of Ki-67 as a Potential Biomarker in Patients with Breast Cancer. *J Genet Eng Biotechnol*. 2018 Dec;16(2):479-484. doi: 10.1016/j.jgeb.2018.03.002. Epub 2018 Mar 10.

Rakha, E.A, Reis-Filho, J.S., Baehner, F., Dabbs, D.J., Decker, T., Eusebi, V., and Ellis, I.O. 2010. Breast cancer prognostic classification in the molecular era: the role of histological grade. *Breast Cancer Research : BCR*, 12(4), 207.

<https://doi.org/10.1186/bcr2607>

Redig A. J and McAllister S. S. Breast cancer as a systemic disease: a view of metastasis. *Journal of Internal Medicine*. 2013; 274(2):113–126

Soliman, A. N., Yussif, M. S. 2016. Ki-67 as a Prognostic Marker According to Breast Cancer Molecular Subtype. *Cancer Biol Med* 2016.
doi: 10.20892/j.issn.2095-3941.2016.0066

Taneja P, et al. (2010). Classical and Novel Prognostic Markers for Breast Cancer and their Clinical Significance. *Clinical Medicine Insights*. 4:15-34.

Urruticoechea, A., Smith, I.E., Dowsett, M. (2005). Proliferation Marker Ki67 in Early Breast Cancer. *J Clin Oncol*. 23:7212 –7220.

Yerushalmi R, Woods R, et al. Ki67 in breast cancer : prognostic and predictive potential. *Pubmed* 2010 feb; 11(2):174-83

Lampiran 1 Hasil Analisis SPSS

Chi Square test ki67 terhadap ukuran tumor

Status ki67 * Ukuran Tumor (cm) Crosstabulation

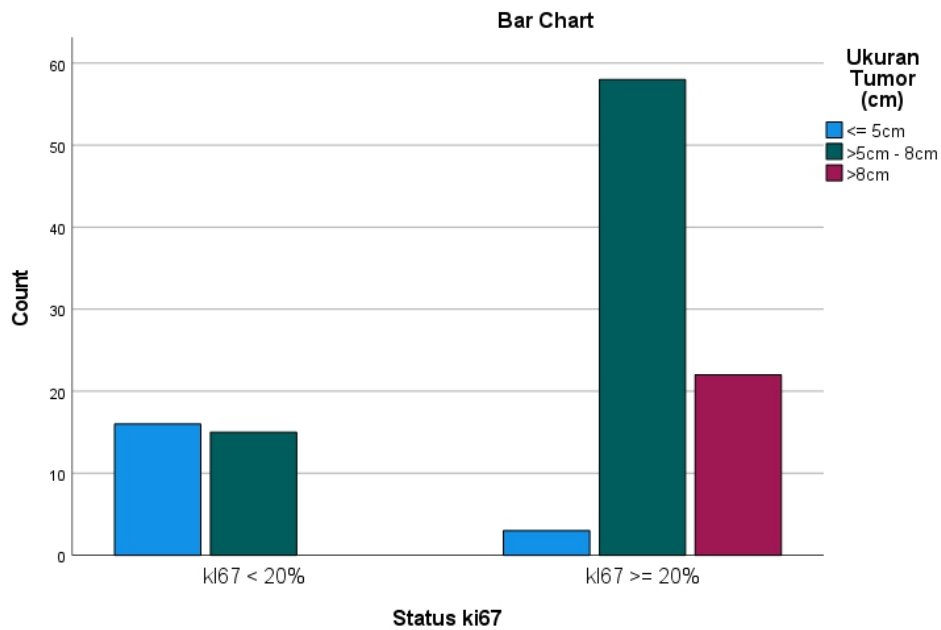
Count

		Ukuran Tumor (cm)			Total
		<= 5cm	>5cm - 8cm	>8cm	
Status ki67	ki67 < 20%	16	15	0	31
	ki67 >= 20%	3	58	22	83
Total		19	73	22	114

Chi-Square Tests

	Value	df	Asymptotic Significance (2- sided)
Pearson Chi-Square	41,044 ^a	2	,000
Likelihood Ratio	42,690	2	,000
Linear-by-Linear Association	34,596	1	,000
N of Valid Cases	114		

a. 0 cells (0,0%) have expected count less than 5. The minimum expected count is 5,17.



Chi square test status Ki67 terhadap grading histopatologis

Status ki67 * Grading Histopatologis Crosstabulation

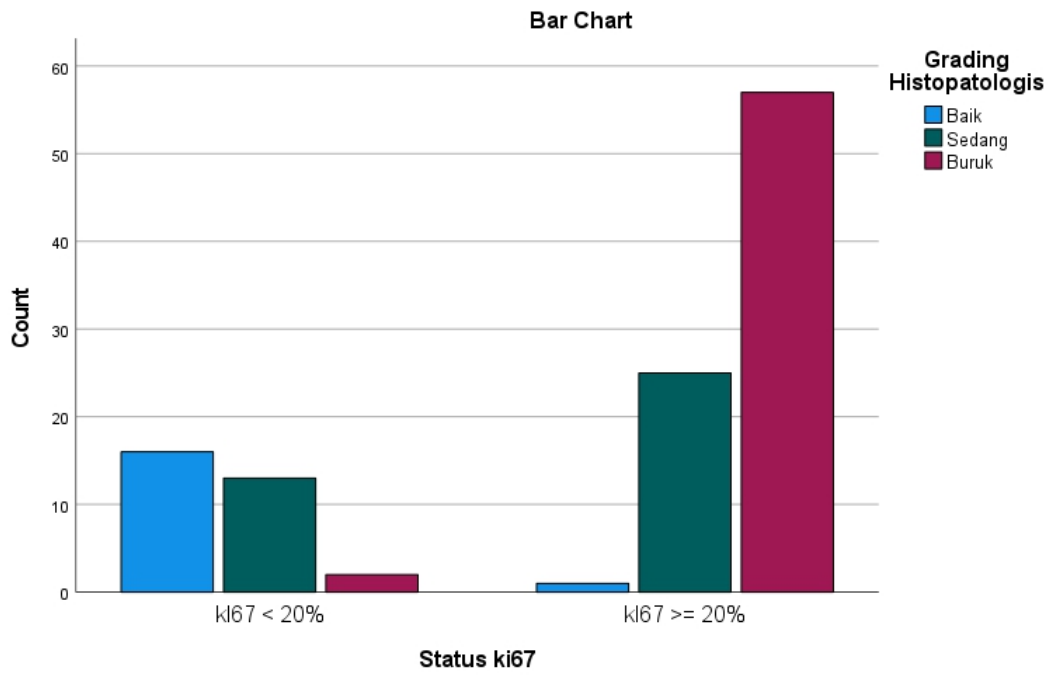
Count

		Grading Histopatologis			Total
		Baik	Sedang	Buruk	
Status ki67	ki67 < 20%	16	13	2	31
	ki67 >= 20%	1	25	57	83
Total		17	38	59	114

Chi-Square Tests

	Value	df	Asymptotic Significance (2-sided)
Pearson Chi-Square	56,288 ^a	2	,000
Likelihood Ratio	59,519	2	,000
Linear-by-Linear Association	53,455	1	,000
N of Valid Cases	114		

a. 1 cells (16,7%) have expected count less than 5. The minimum expected count is 4,62.



KAPLAN MEIER STATUS KI67 TERHADAP DFS

Case Processing Summary

Status ki67	Total N	N of Events	Censored	
			N	Percent
ki67 < 20%	31	2	29	93,5%
ki67 >= 20%	83	31	52	62,7%
Overall	114	33	81	71,1%

Means and Medians for Survival Time

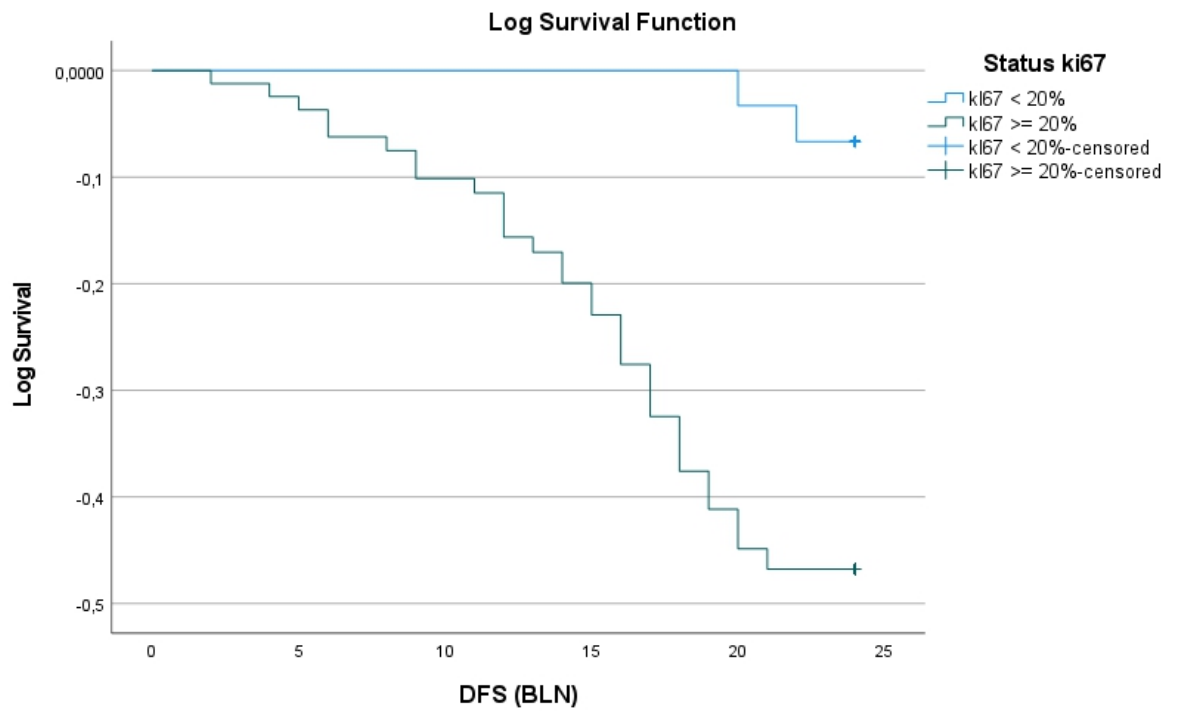
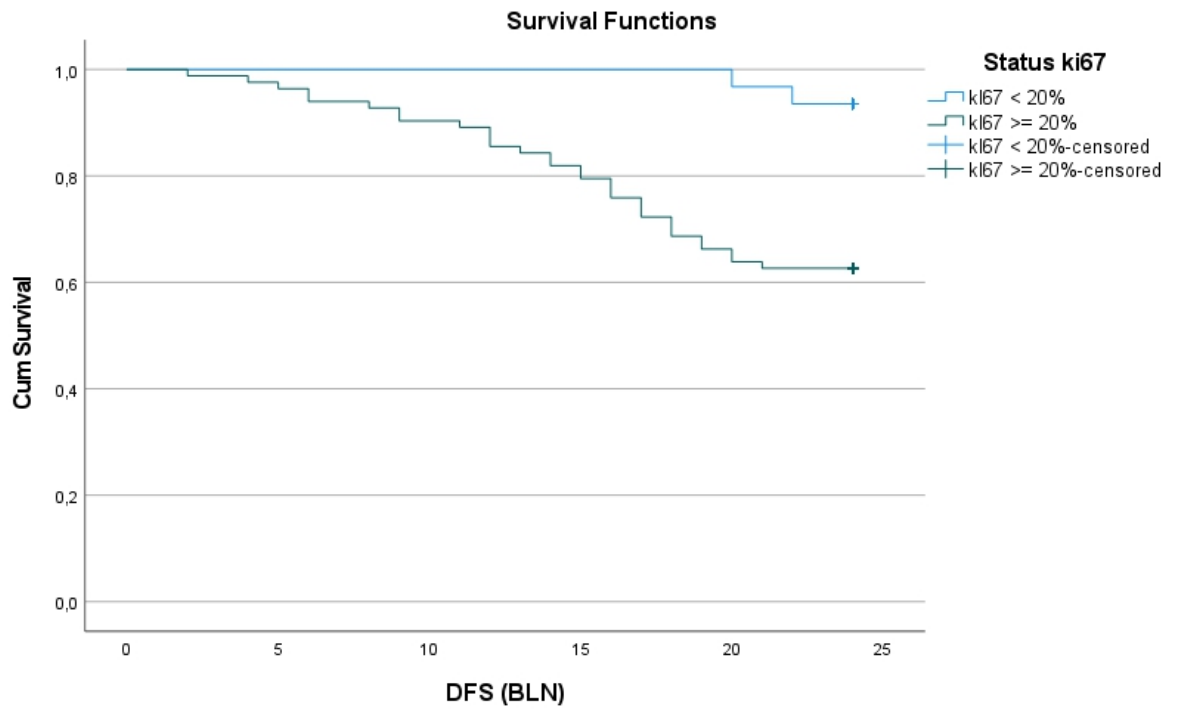
Status ki67	Estimate	Std. Error	Mean ^a 95% Confidence Interval		Estimate	Std. Error	Median 95% Confidence Interval	
			Lower Bound	Upper Bound			Lower Bound	Upper Bound
ki67 < 20%	23,806	,140	23,532	24,081
ki67 >= 20%	20,084	,654	18,802	21,367
Overall	21,096	,502	20,112	22,081

a. Estimation is limited to the largest survival time if it is censored.

Overall Comparisons

	Chi-Square	df	Sig.
Log Rank (Mantel-Cox)	10,163	1	,001
Breslow (Generalized Wilcoxon)	10,658	1	,001
Tarone-Ware	10,442	1	,001

Test of equality of survival distributions for the different levels of Status ki67.



KAPLAN MEIER STATUS KI67 TERHADAP OS

Case Processing Summary

Status ki67	Total N	N of Events	Censored	
			N	Percent
ki67 < 20%	31	0	31	100,0%
ki67 >= 20%	83	21	62	74,7%
Overall	114	21	93	81,6%

Overall Comparisons

	Chi-Square	df	Sig.
Log Rank (Mantel-Cox)	8,996	1	,003
Breslow (Generalized Wilcoxon)	8,940	1	,003
Tarone-Ware	8,975	1	,003

Test of equality of survival distributions for the different levels of Status ki67.

