

DAFTAR PUSTAKA

- Aly, Sumarni Hamid. 2015. *Emisi Transportasi*. Jakarta: Penerbit Plus.
- Anggraini, Bima. dkk. 2013. *Penentuan Tingkat Kebisingan Lalu Lintas Di Jalan Tuanku Tambusai Pekanbaru*. Skripsi. Pekanbaru: Fakultas Matematika dan Ilmu Pengetahuan Alam Universitas Riau.
- Asmarani, Ruly. 2017. *Hubungan antara Kemampuan Adaptasi terhadap Kebisingan dengan Stress Kerja Karyawan*. Jurnal Studia Insania, Mei 2017, Hal. 90 Vol. 5, No. 1 ISSN 2355-1011, e-ISSN 2549-3019 DOI: <http://dx.doi.org/10.18592/jsi.v5i1.1356>.
- Auliyah, Rizqah Nur. 2020. *Analisis Tingkat Kebisingan pada Kawasan Kuliner di Kota Makassar*. Skripsi. Makassar: Fakultas Teknik Universitas Hasanuddin.
- Badan Pusat Statistik. Jumlah Kendaraan Bermotor Menurut Kabupaten/Kota dan Jenis Kendaraan di Provinsi Sulawesi Selatan (Unit), 2020.
- Badan Pusat Statistik. Jumlah Kendaraan Bermotor Menurut Kabupaten/Kota dan Jenis Kendaraan di Provinsi Sulawesi Selatan (Unit), 2015.
- Departemen Pekerjaan Umum tentang Manual Kapasitas Jalan Indonesia (1997).
- Djalante, Susanti. 2010. *Analisis Tingkat Kebisingan di Jalan Raya yang Menggunakan Alat Pemberi Isyarat Lalu Lintas (APIL) Studi kasus: Simpang Ade Swalayan*. Jurnal SMARTek, Vol. 8 No. 4. November 2010: 281.
- Ekawati, Diana. 2018. *Hubungan Gangguan Subjektif Kebisingan Kereta Api terhadap Konsentrasi Belajar Siswa SD Negeri Widoro Yogyakarta*. Skripsi. Yogyakarta: Universitas Islam Indonesia.
- Ghozali, Imam. 2013. *Aplikasi Analisis Multivariate dengan Program IBM SPSS 21 Update PLS Regresi*. Semarang: Badan Penerbit Universitas Diponegoro.
- Guntur, Andi Rachmat. 2014. *Analisis Tingkat Kekuatan Bunyi Klakson Kendaraan Ringan (Mobil Pribadi) Di Kota Makassar*. Skripsi. Makassar: Fakultas Teknik Universitas Hasanuddin.

- Herawati, Peppy. 2016. *Dampak Kebisingan dari Aktifitas Bandara Sultan Thaha Jambi terhadap Pemukiman Sekitar Bandara*. Jurnal Ilmiah Universitas Batanghari Jambi Vol. 16 No.1.
- Hustim, Muralia. 2019. *Bahan Ajar Bising dan Getaran Departemen Teknik Lingkungan*. Makassar : Fakultas Teknik Universitas Hasanuddin.
- Kamus Besar Bahasa Indonesia (KBBI) Edisi Kelima. 2021. *Aplikasi Luring Resmi Badan Pengembangan dan Pembinaan Bahasa, Kementerian Pendidikan dan Kebudayaan Republik Indonesia*. (Online).
- Kementerian Kesehatan RI. 1987. Permenkes No. 718/Men/Kes/Per/XI/1987. Tentang Kebisingan yang Berhubungan dengan Kesehatan. Jakarta: Kementerian Kesehatan RI.
- Kementerian Lingkungan Hidup Republik Indonesia. 1996. Kepmen LH Nomor 48/MEN.LH/11/1996. Tentang Baku Tingkat Kebisingan. Jakarta: Kementerian Lingkungan Hidup RI.
- Laboratorium Kualitas Udara dan Bising Departemen Teknik Lingkungan Fakultas Teknik Universitas Hasanuddin. 2020. *Penuntun Praktikum Bising*. Makassar: Fakultas Teknik Universitas Hasanuddin.
- Machdar, Izarul. 2018. *Pengantar Pengendalian Pencemaran (Pencemaran Air, Pencemaran Udara dan Kebisingan)*. Yogyakarta: Deepublish. ISBN 978-602-453-634-3.
- Mediastika, Christina E. 2009. *Material Akustik Pengendali Kualitas Bunyi pada Bangunan*. Yogyakarta: Penerbit Andi.
- Pedoman Perhitungan Kapasitas Jalan Peraturan Umum No. 13 Tahun 2003 mengenai Batas Maksimum dan Minimum Nilai L_{10} dan L_{Aeq} .
- Peraturan Menteri Pekerjaan Umum Nomor 18 Tahun 2010 tentang Pedoman Revitalisasi Kawasan. Jakarta: Menteri Pekerjaan Umum Republik Indonesia.
- Peraturan Menteri Perhubungan Republik Indonesia Nomor PM 111 tahun 2015 tentang Tata Cara Penetapan Batas Kecepatan. Jakarta: Menteri Perhubungan Republik Indonesia.
- Peraturan Pemerintah No. 15 Tahun 2005 tentang Jalan Tol.

- Ramli, Yesmi Rahmadani. 2017. *Tugas Akhir “Model Prediksi Kebisingan Lalu Lintas Heterogen Berbasis Model ASJ-RTN 2008 Untuk Tipe Jalan 4/2D”*. Skripsi. Makassar: Fakultas Teknik Universitas Hasanuddin.
- Satwiko, Prasasto. 2008. *Fisika Bangunan*. Yogyakarta: Penerbit Andi.
- Setiawan, Agung. 2017. *Prediksi Tingkat Kebisingan Lalu Lintas Heterogen Berbasis Sistem Informasi Geografis*. Skripsi. Makassar: Fakultas Teknik Universitas Hasanuddin.
- Sufren dan Yonathan Natanael. 2014. *Belajar Otodidak SPSS Pasti Bisa*. ISBN: 978-602-02-5203-2. Jakarta: PT Gramedia.
- Surat Edaran Menteri Tenaga Kerja, Transmigrasi dan Koperasi No. SE-01/MEN/1978 tentang Nilai Ambang Batas.
- Undang-Undang Republik Indonesia Nomor 13 Tahun 1980 tentang Jalan.
- Webster, Merriam. 2021. *Merriam Webster’s Collegiate Dictionary*. United States of America: Merriam Webster Incorporated. Online: <https://www.merriam-webster.com/dictionary/frontage%20road>, diakses pada tanggal 9 April 2021).
- Widaryanti, Nadiyah. 2018. *Analisis Pengurangan Tingkat Kebisingan Lalu Lintas terhadap Rencana Pembangunan Jalan Tol*. Skripsi. Makassar: Universitas Hasanuddin.

Lampiran 1. Dokumentasi Lokasi dan Pengambilan Data

- Titik Pengamatan F1



- Titik Pengamatan F2



- Titik Pengamatan F3



- Titik Pengamatan F4



- Titik Pengamatan F5



- Titik Pengamatan F6



- Titik Pengamatan F7



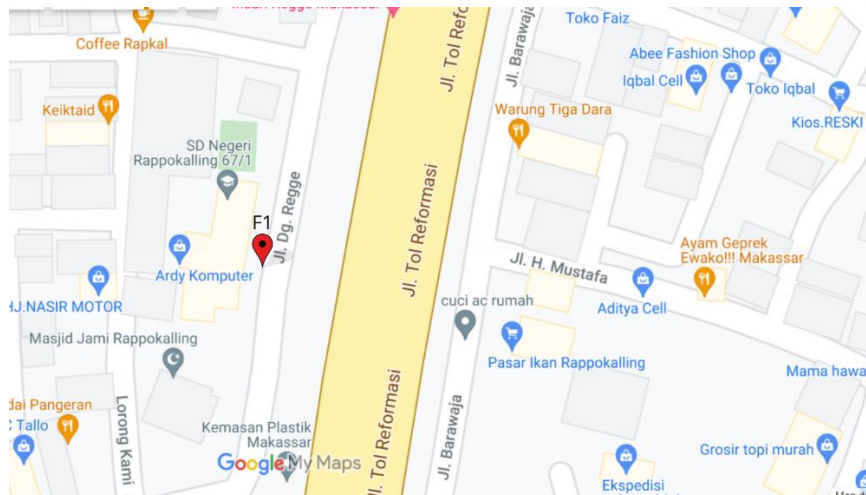
- Titik Pengamatan F8



- Titik Pengamatan F9



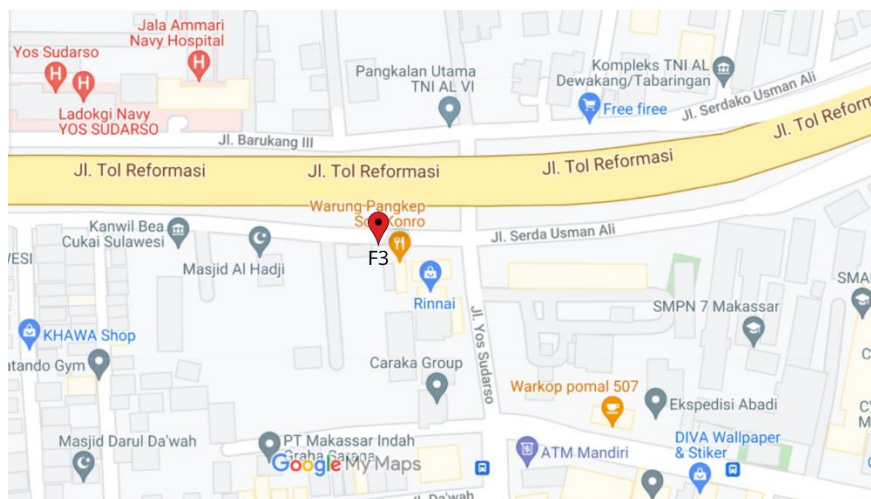
Lampiran 2. Layout untuk Tiap Titik Pengamatan



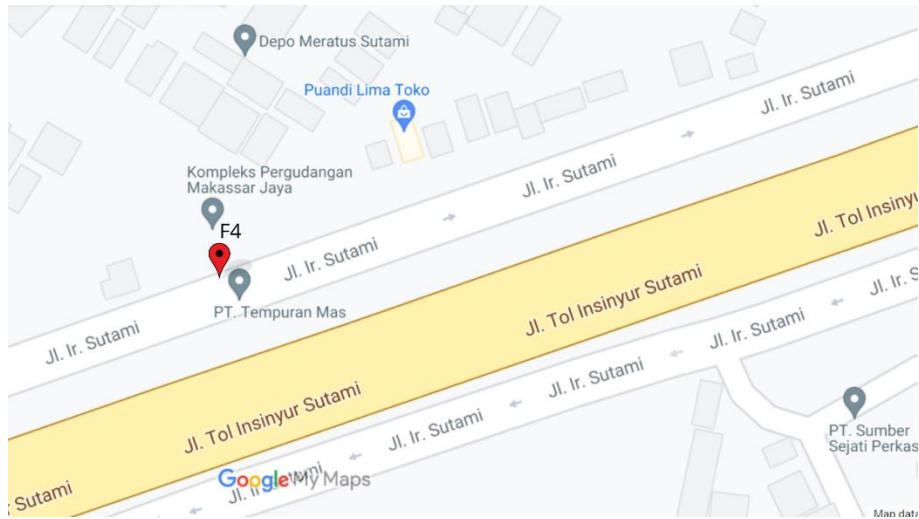
Titik Pengamatan F1



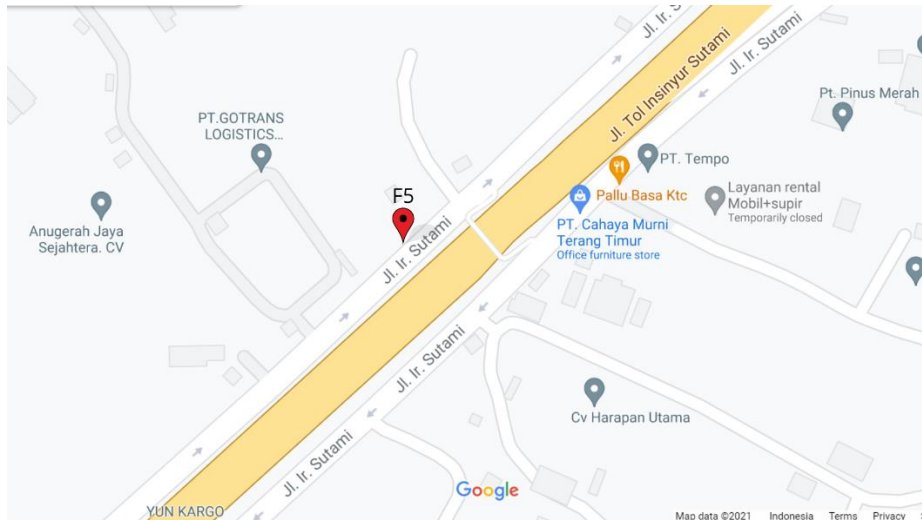
Titik Pengamatan F2



Titik Pengamatan F3



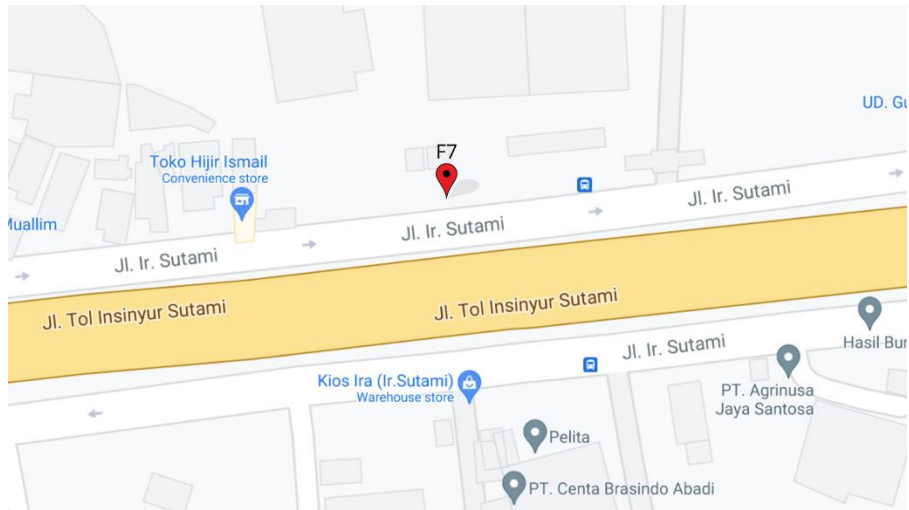
Titik Pengamatan F4



Titik Pengamatan F5



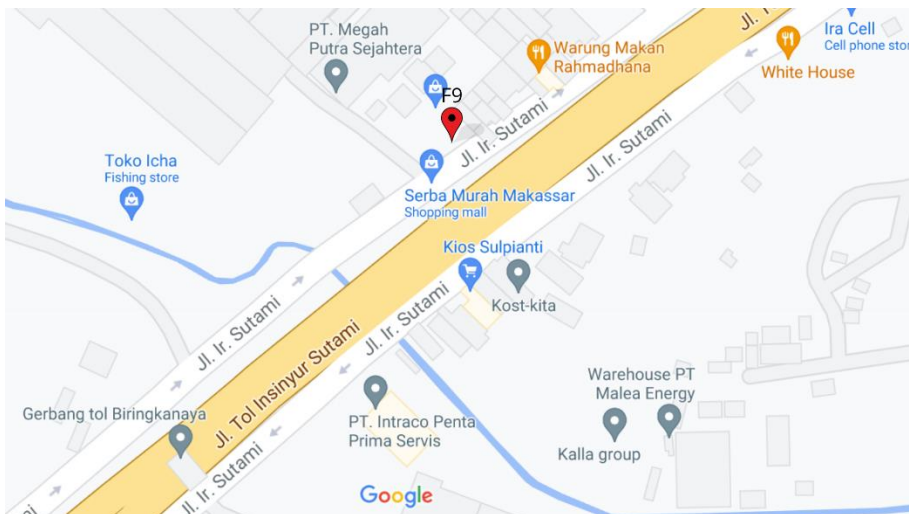
Titik Pengamatan F6



Titik Pengamatan F7



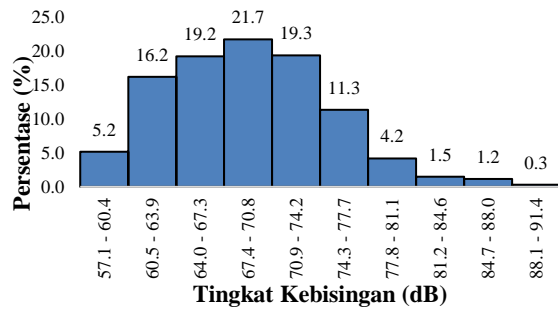
Titik Pengamatan F8



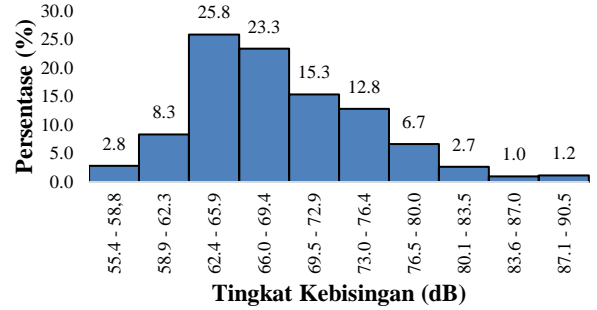
Titik Pengamatan F9

Lampiran 3. Histogram Distribusi Tingkat Kebisingan

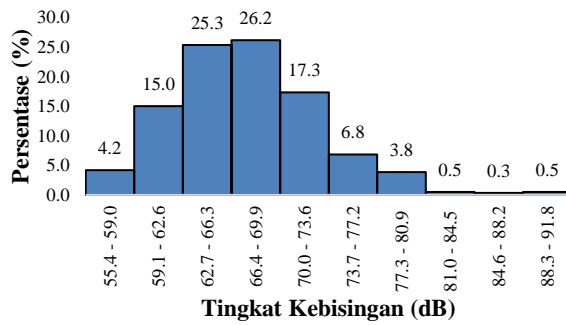
A. Titik Pengamatan F1



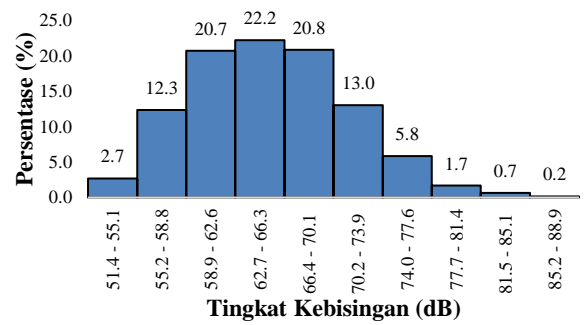
Pukul 07.00-08.00 WITA



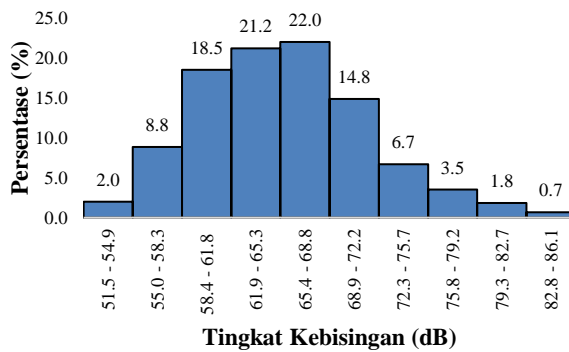
Pukul 08.00-09.00 WITA



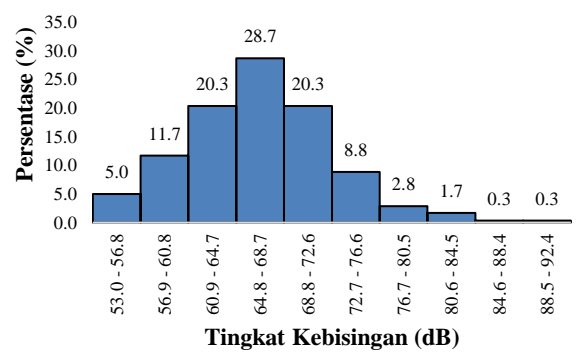
Pukul 09.00-10.00 WITA



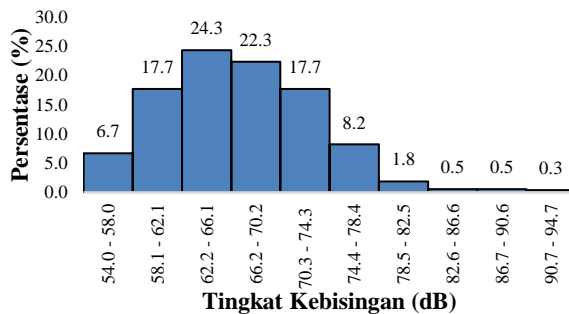
Pukul 10.00-11.00 WITA



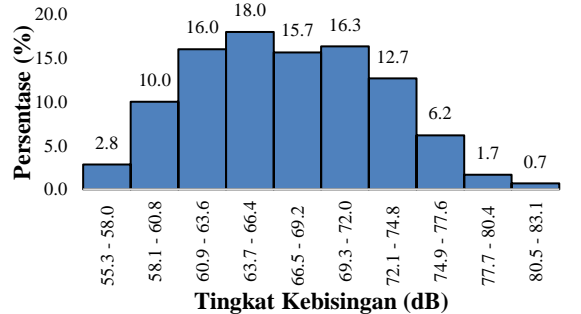
Pukul 11.00-12.00 WITA



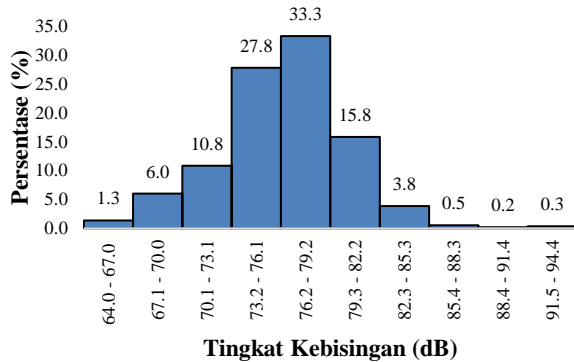
Pukul 12.00-13.00 WITA



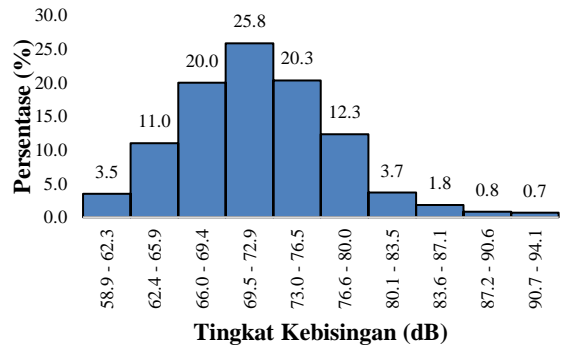
Pukul 13.00-14.00 WITA



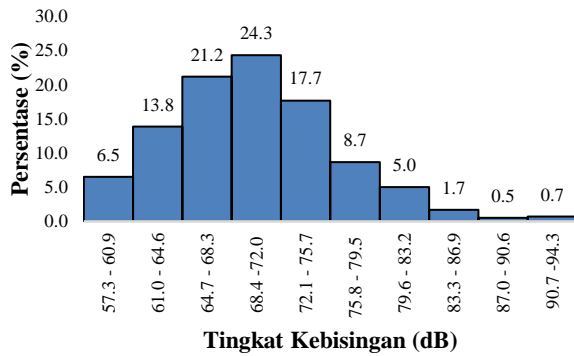
Pukul 14.00-15.00 WITA



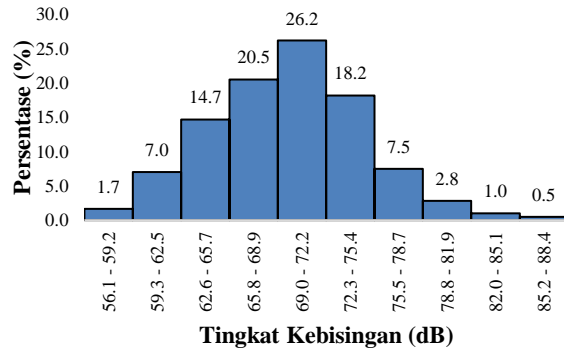
Pukul 15.00-16.00 WITA



Pukul 16.00-17.00 WITA

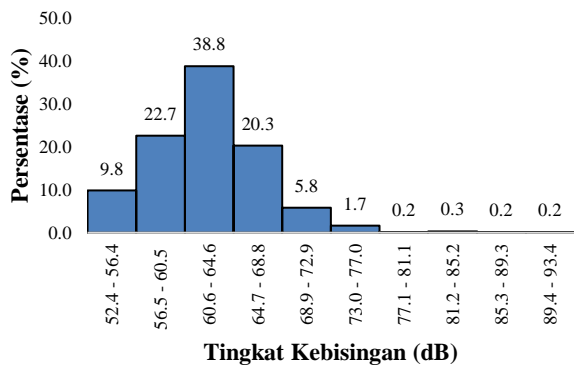


Pukul 17.00-18.00 WITA

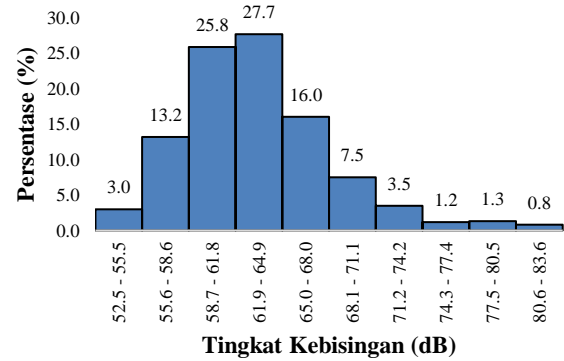


Pukul 18.00-19.00 WITA

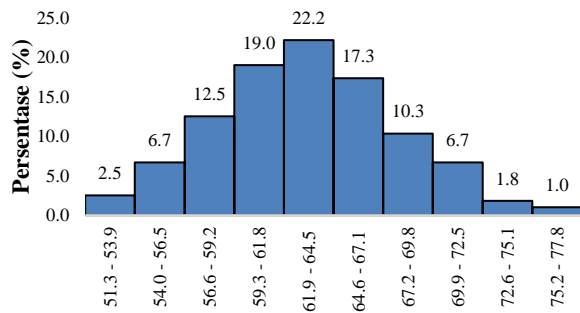
B. Titik Pengamatan F2



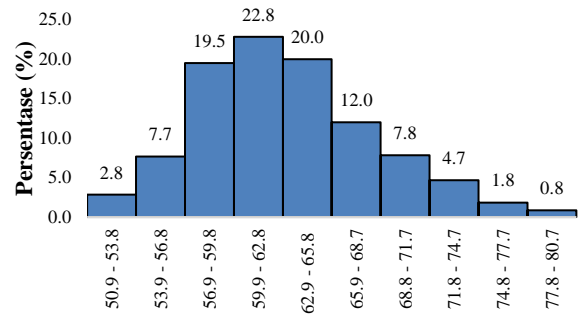
Pukul 07.00-08.00 WITA



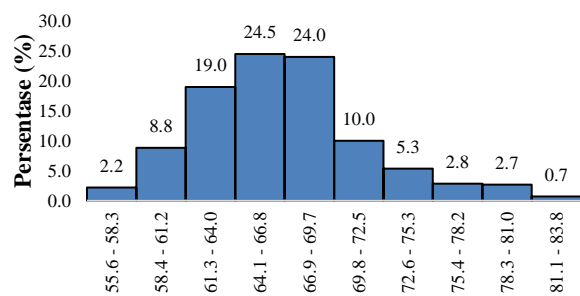
Pukul 08.00-09.00 WITA



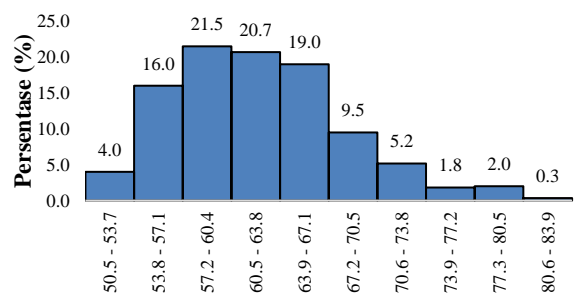
Tingkat Kebisingan (dB)
Pukul 09.00-10.00 WITA



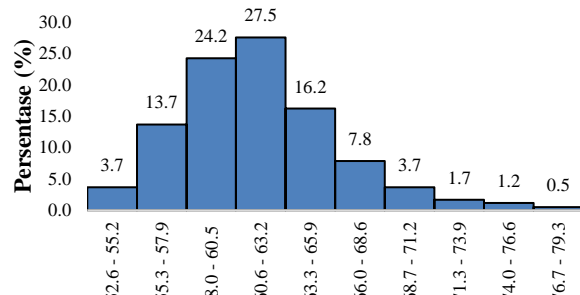
Tingkat Kebisingan (dB)
Pukul 10.00-11.00 WITA



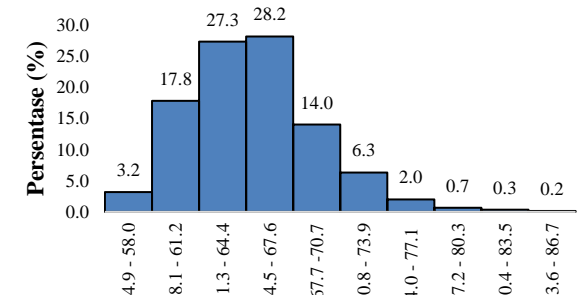
Tingkat Kebisingan (dB)
Pukul 11.00-12.00 WITA



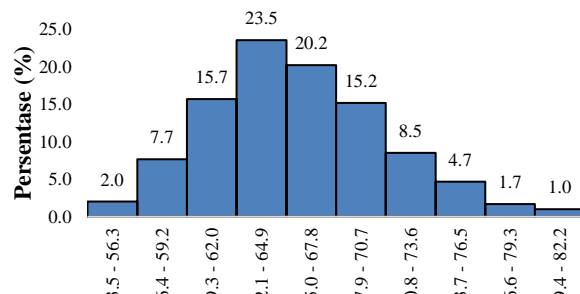
Tingkat Kebisingan (dB)
Pukul 12.00-13.00 WITA



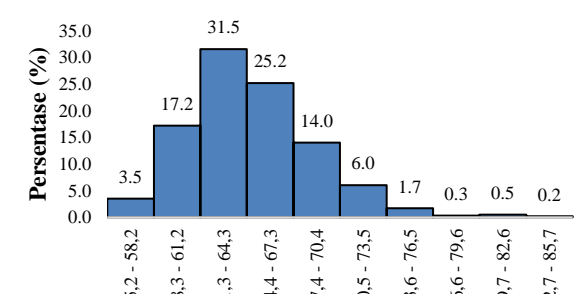
Tingkat Kebisingan (dB)
Pukul 13.00-14.00 WITA



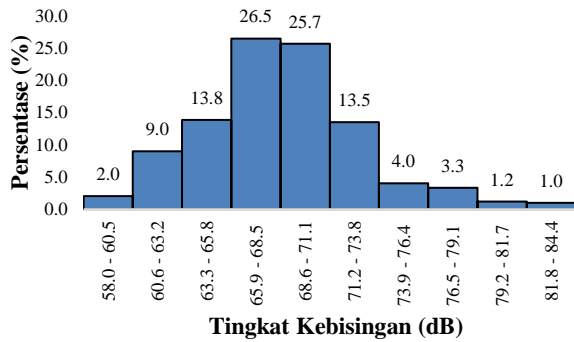
Tingkat Kebisingan (dB)
Pukul 14.00-15.00 WITA



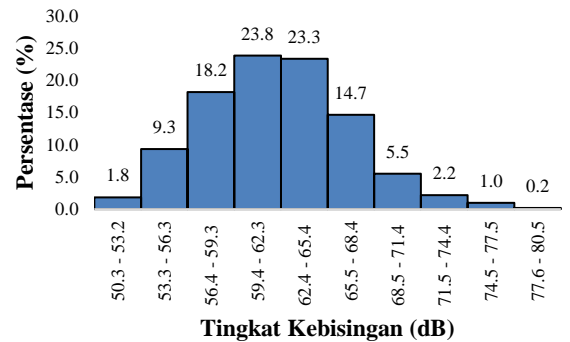
Tingkat Kebisingan (dB)
Pukul 15.00-16.00 WITA



Tingkat Kebisingan (dB)
Pukul 16.00-17.00 WITA

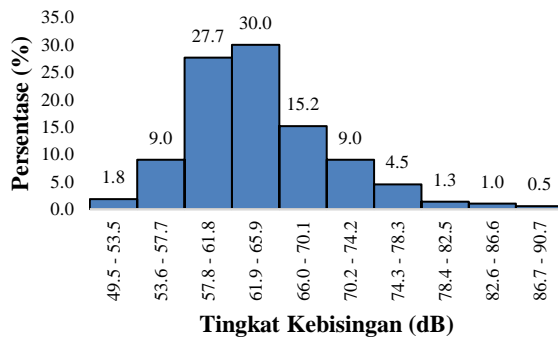


Pukul 17.00-18.00 WITA

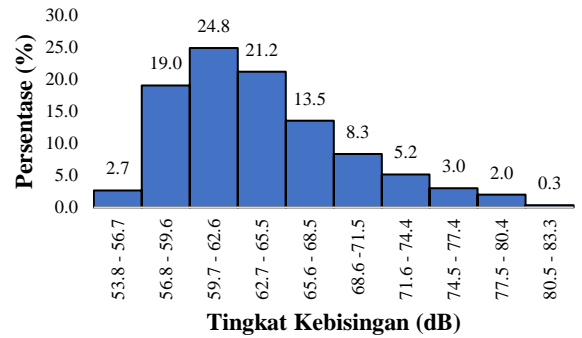


Pukul 18.00-19.00 WITA

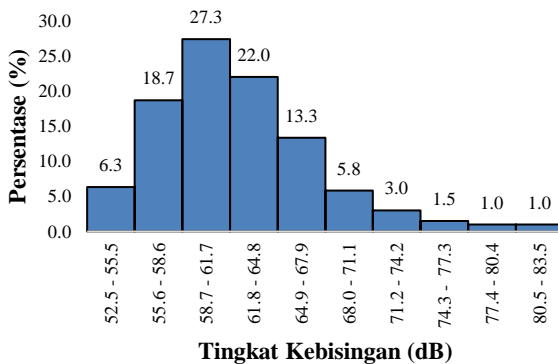
C. Titik Pengamatan F3



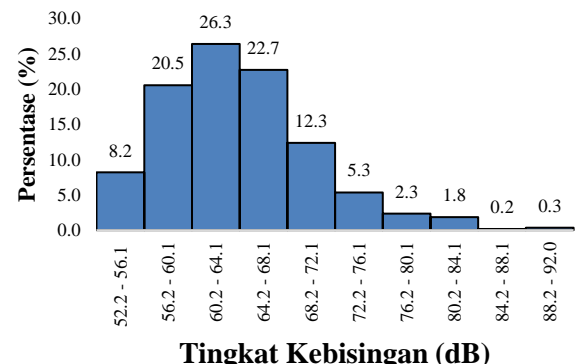
Pukul 07.00-08.00 WITA



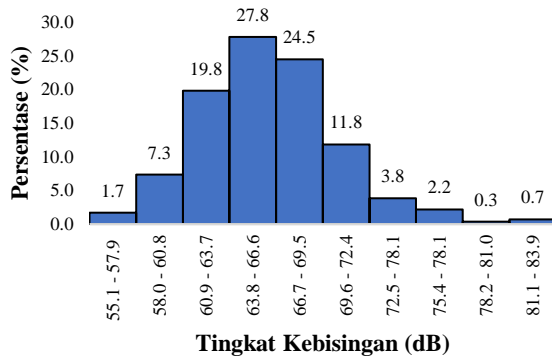
Pukul 08.00-09.00 WITA



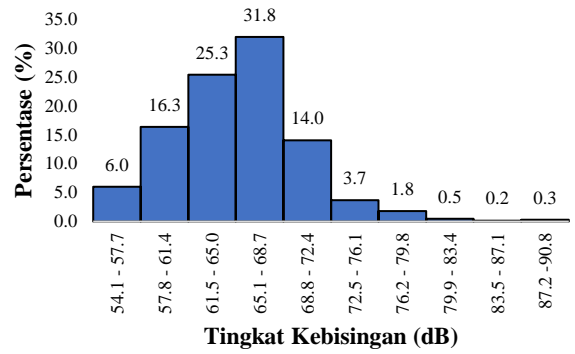
Pukul 09.00-10.00 WITA



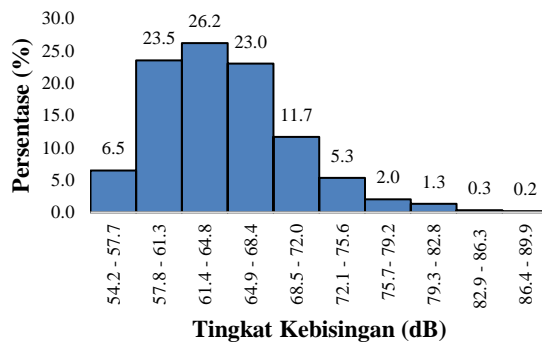
Pukul 10.00-11.00 WITA



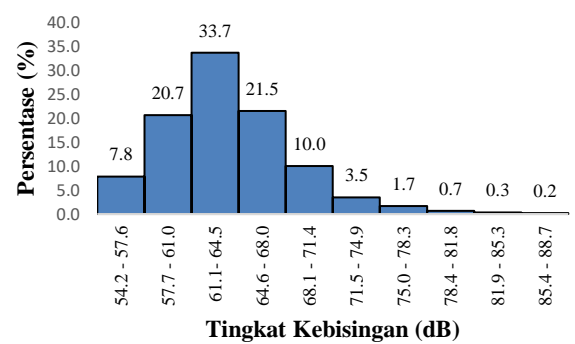
Pukul 11.00-12.00 WITA



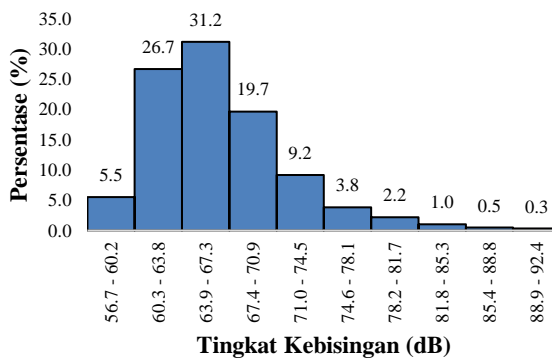
Pukul 12.00-13.00 WITA



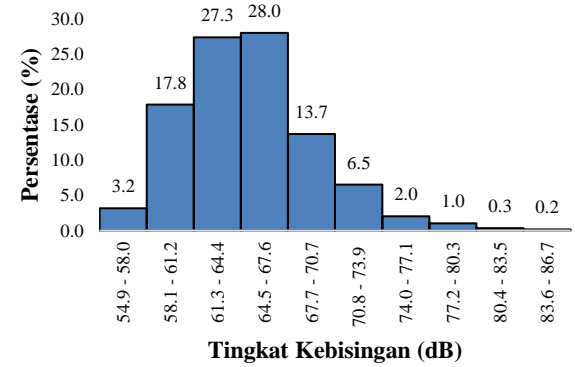
Pukul 13.00-14.00 WITA



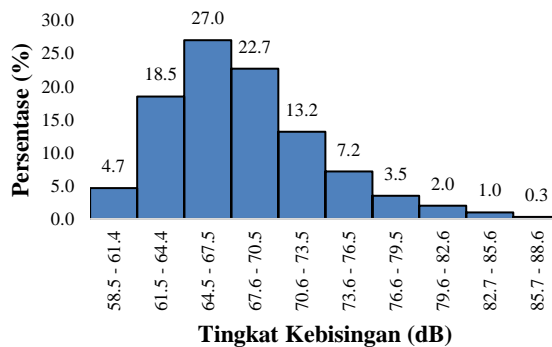
Pukul 14.00-15.00 WITA



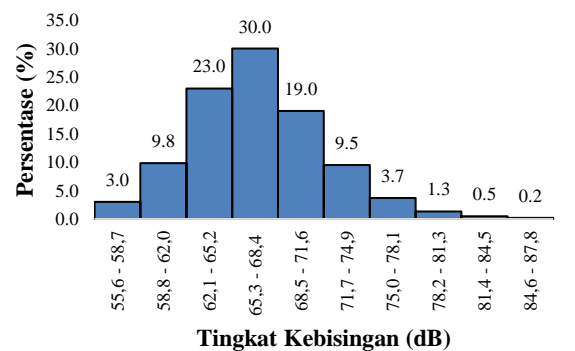
Pukul 15.00-16.00 WITA



Pukul 16.00-17.00 WITA

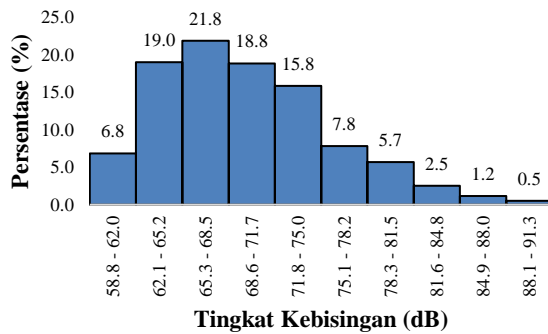


Pukul 17.00-18.00 WITA

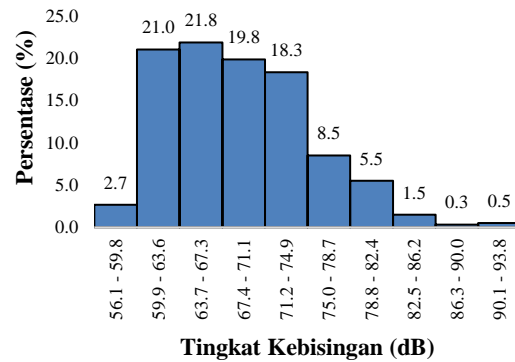


Pukul 18.00-19.00 WITA

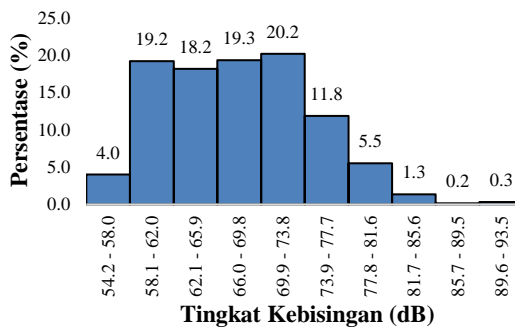
D. Titik Pengamatan F4



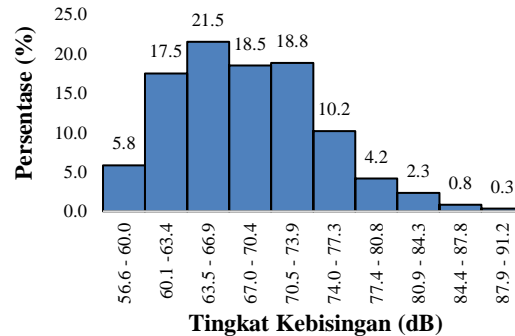
Pukul 07.00-08.00 WITA



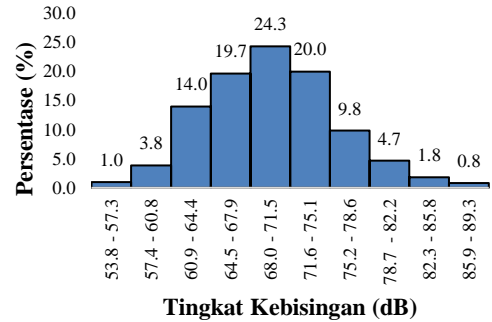
Pukul 09.00-10.00 WITA



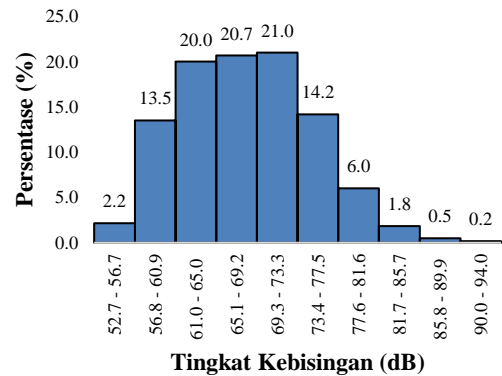
Pukul 11.00-12.00 WITA



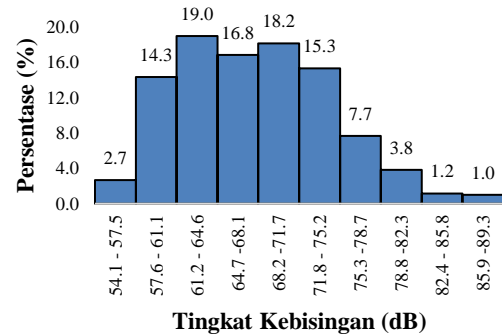
Pukul 13.00-14.00 WITA



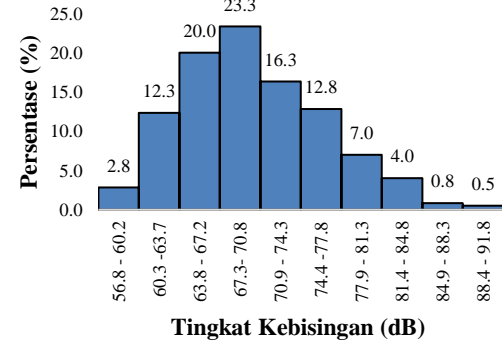
Pukul 08.00-09.00 WITA



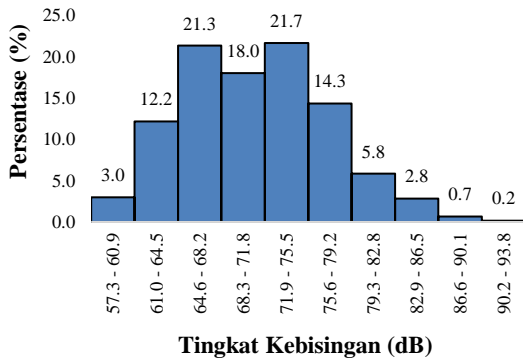
Pukul 10.00-11.00 WITA



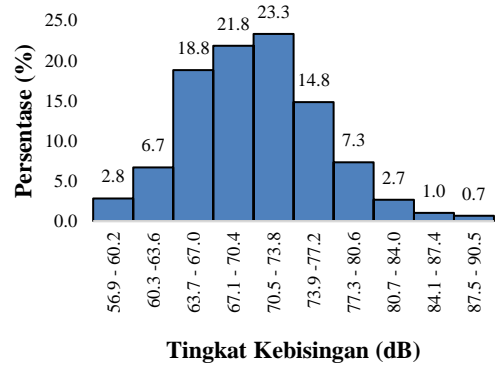
Pukul 12.00-13.00 WITA



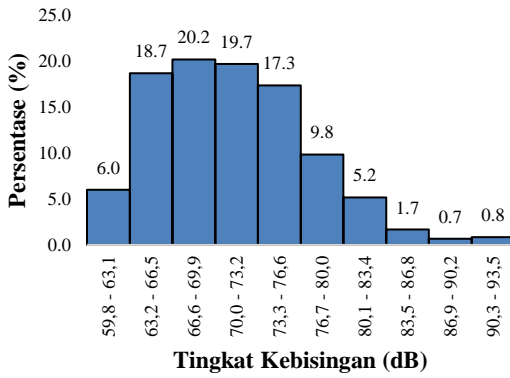
Pukul 14.00-15.00 WITA



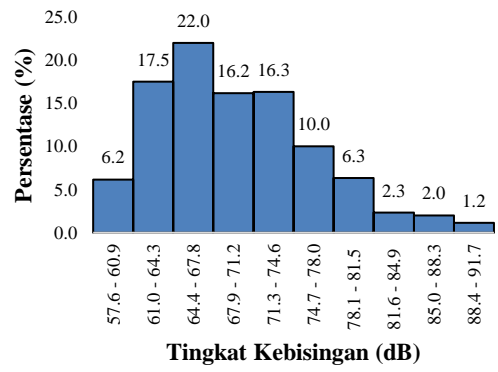
Pukul 15.00-16.00 WITA



Pukul 16.00-17.00 WITA

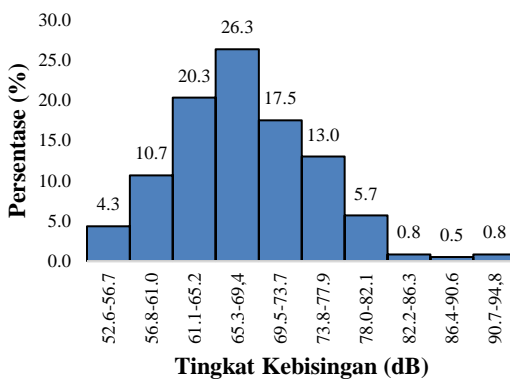


Pukul 17.00-18.00 WITA

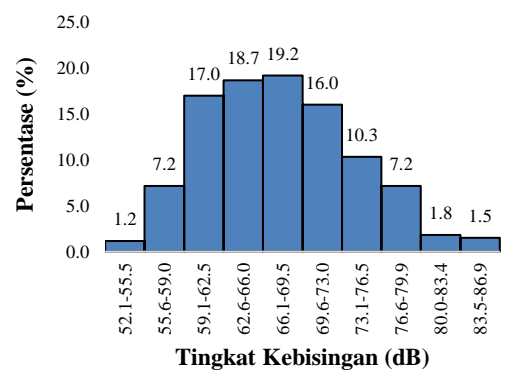


Pukul 18.00-19.00 WITA

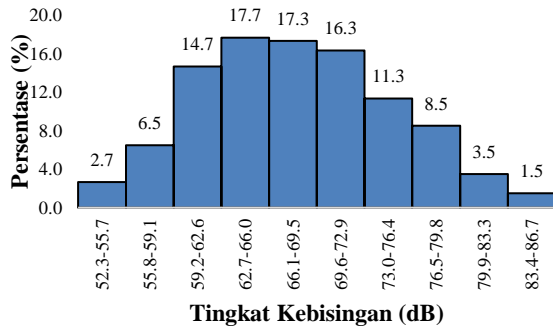
E. Titik Pengamatan F5



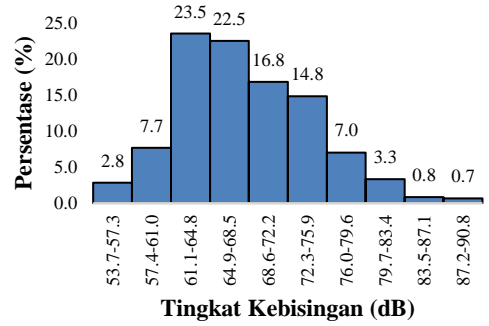
Pukul 07.00-08.00 WITA



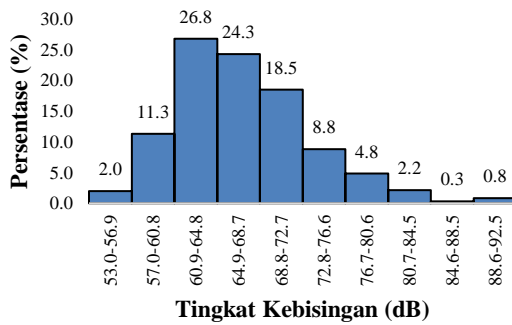
Pukul 08.00-09.00 WITA



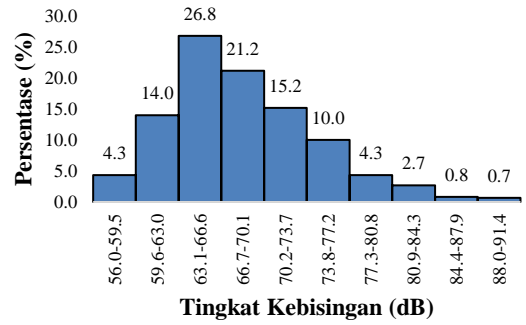
Pukul 09.00-10.00 WITA



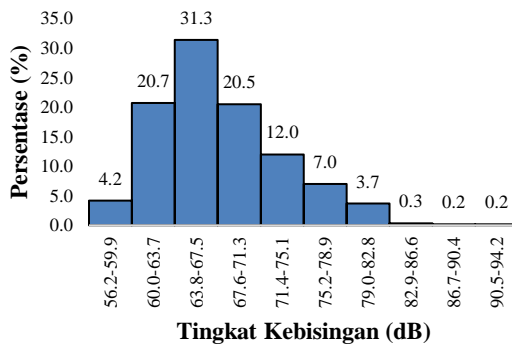
Pukul 10.00-11.00 WITA



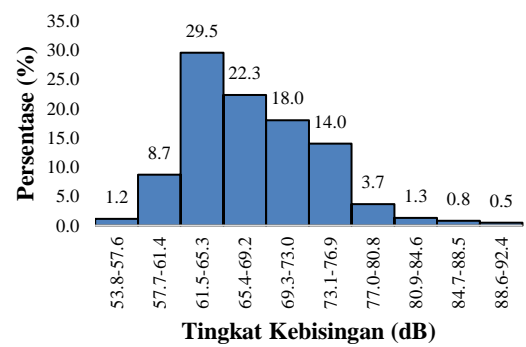
Pukul 11.00-12.00 WITA



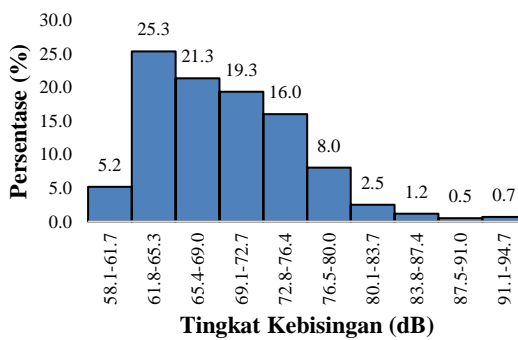
Pukul 12.00-13.00 WITA



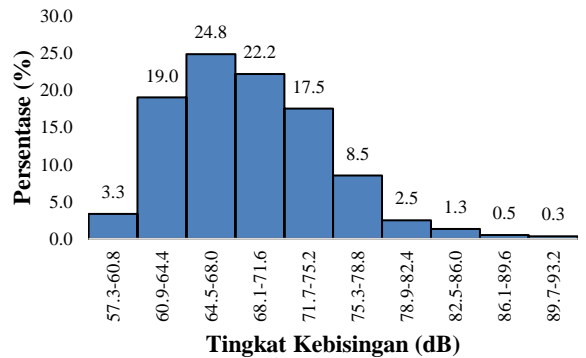
Pukul 13.00-14.00 WITA



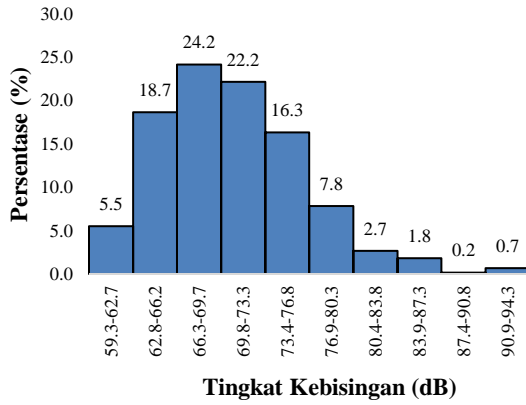
Pukul 14.00-15.00 WITA



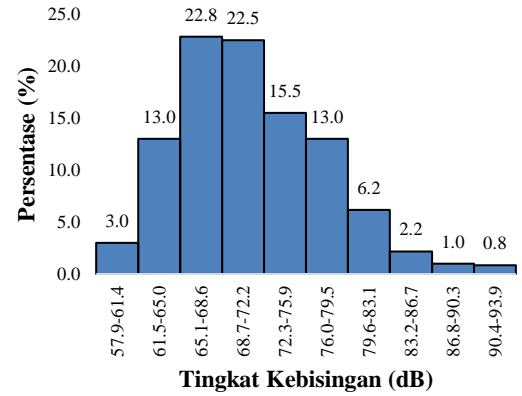
Pukul 15.00-16.00 WITA



Pukul 16.00-17.00 WITA

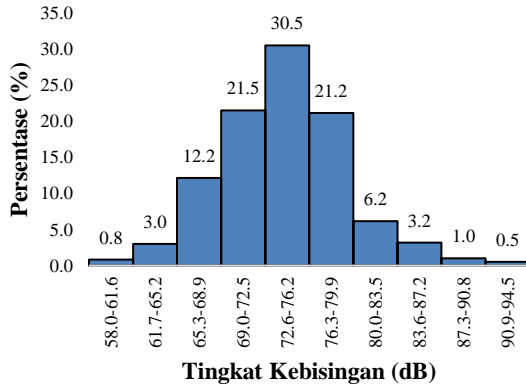


Pukul 17.00-18.00 WITA

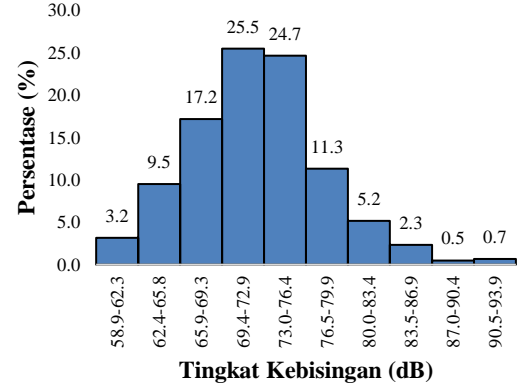


Pukul 18.00-19.00 WITA

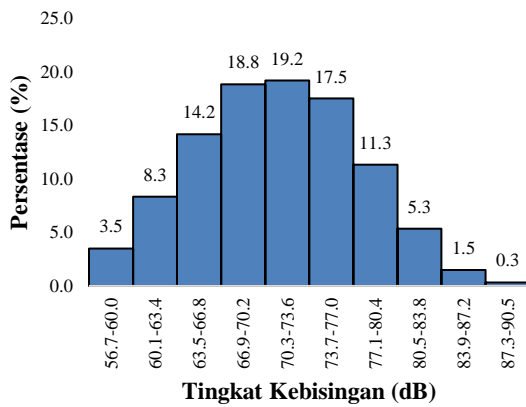
F. Titik Pengamatan F6



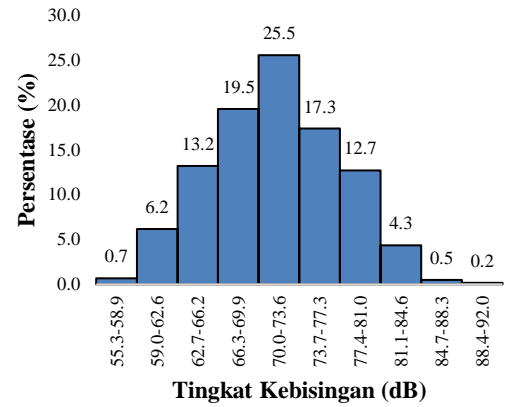
Pukul 07.00-08.00 WITA



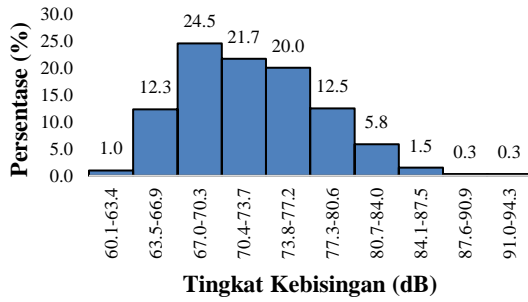
Pukul 08.00-09.00 WITA



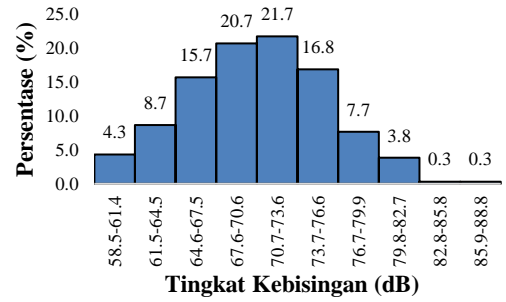
Pukul 09.00-10.00 WITA



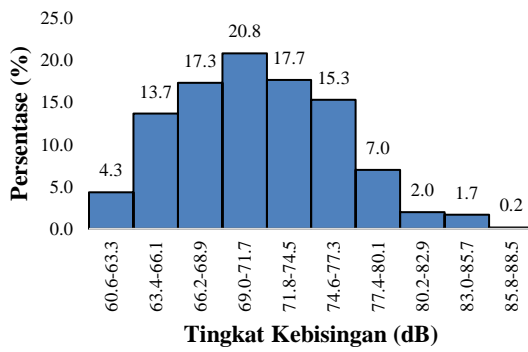
Pukul 10.00-11.00 WITA



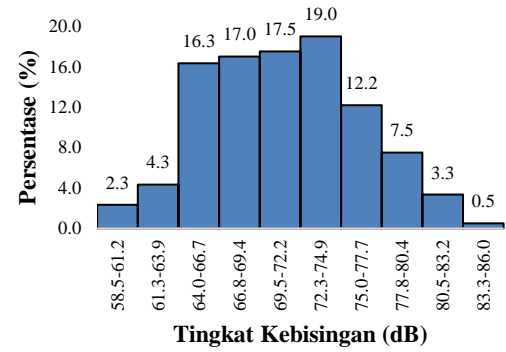
Pukul 11.00-12.00 WITA



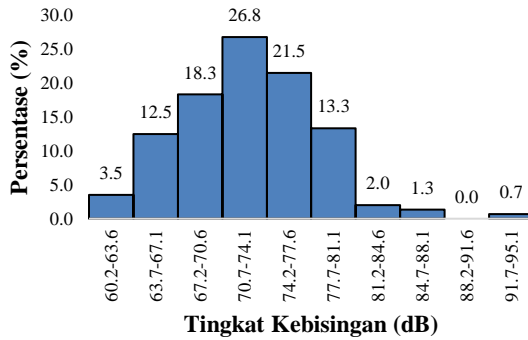
Pukul 12.00-13.00 WITA



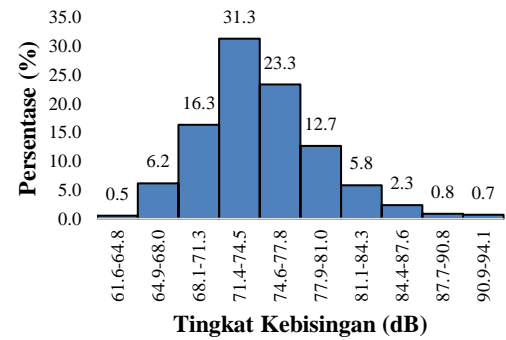
Pukul 13.00-14.00 WITA



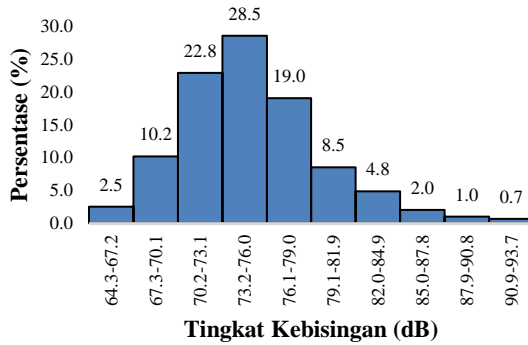
Pukul 14.00-15.00 WITA



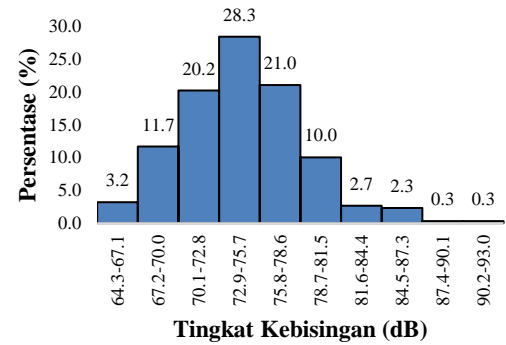
Pukul 15.00-16.00 WITA



Pukul 16.00-17.00 WITA

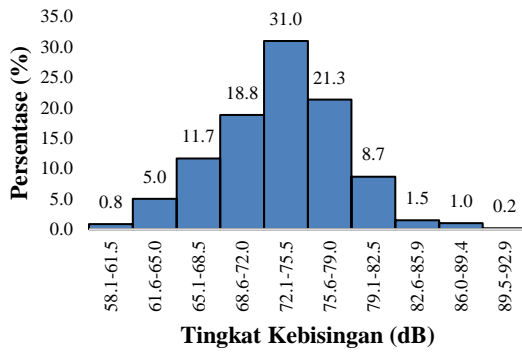


Pukul 17.00-18.00 WITA

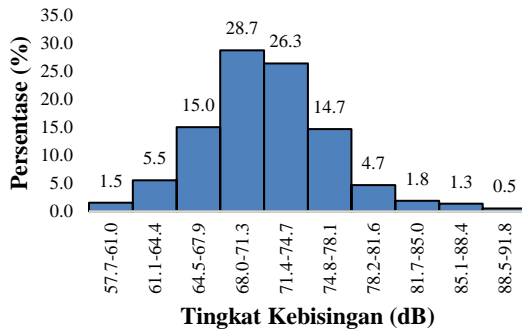


Pukul 18.00-19.00 WITA

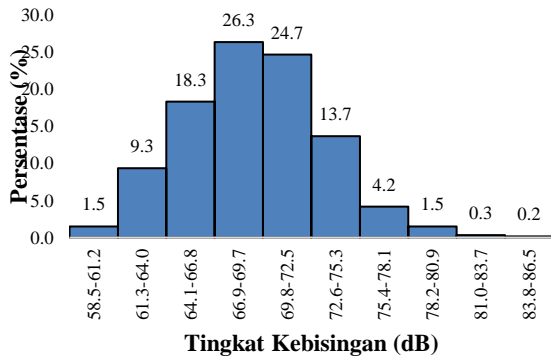
G. Titik Pengamatan F7



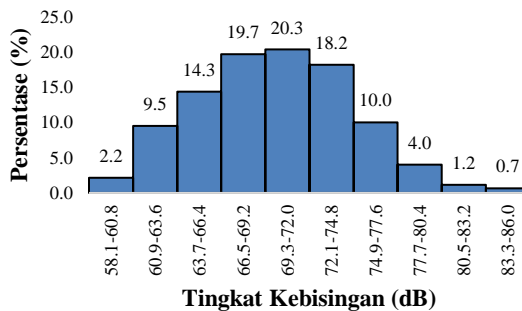
Pukul 07.00-08.00 WITA



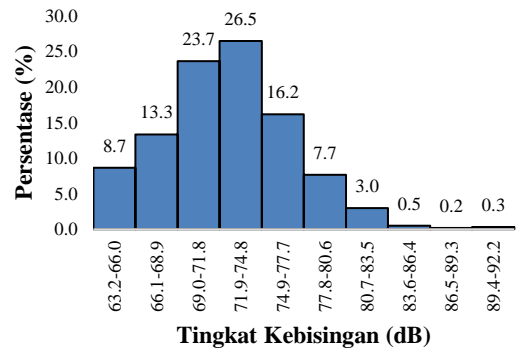
Pukul 09.00-10.00 WITA



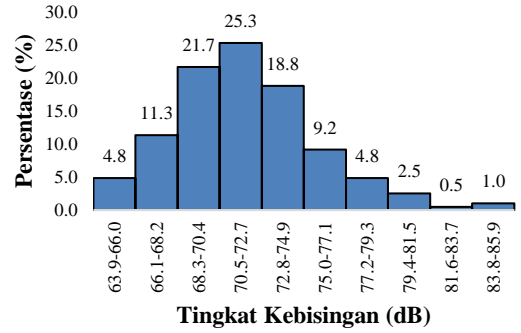
Pukul 10.00-11.00 WITA



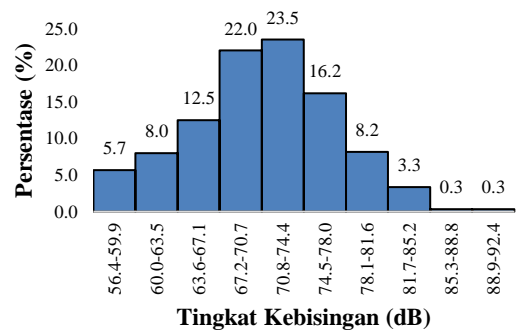
Pukul 13.00-14.00 WITA



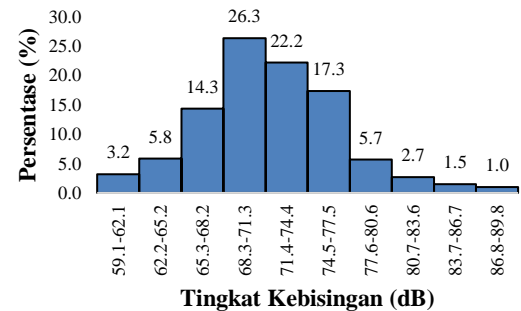
Pukul 10.00-11.00 WITA

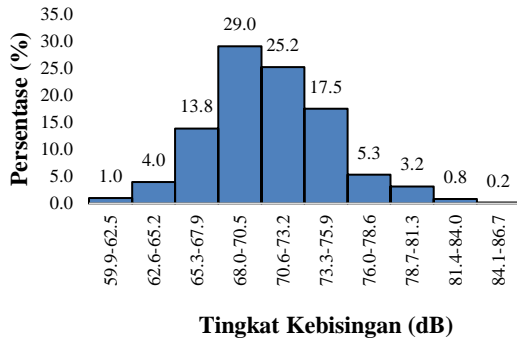


Pukul 12.00-13.00 WITA

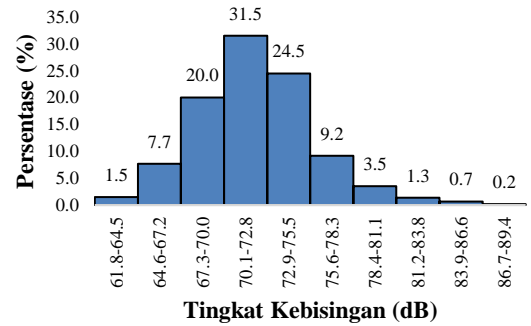


Pukul 14.00-15.00 WITA

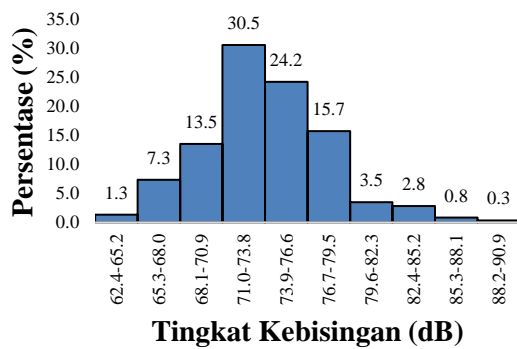




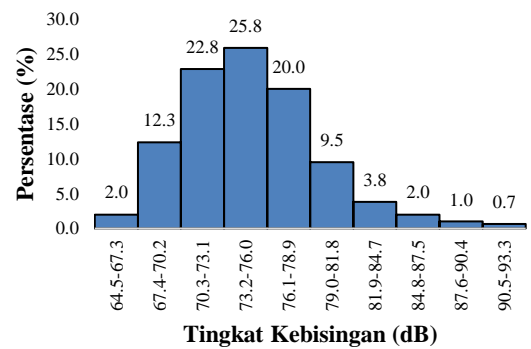
Pukul 15.00-16.00 WITA



Pukul 16.00-17.00 WITA

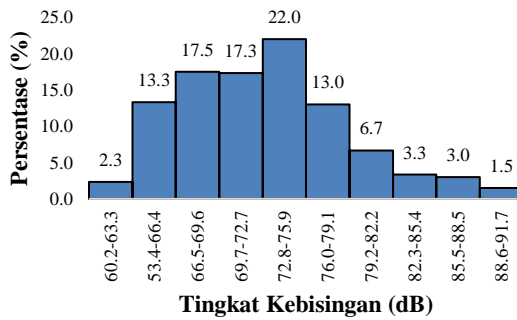


Pukul 17.00-18.00 WITA

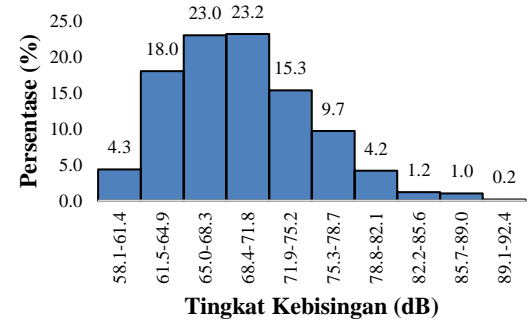


Pukul 18.00-19.00 WITA

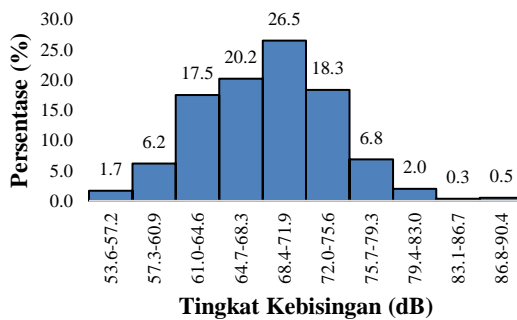
H. Titik Pengamatan F8



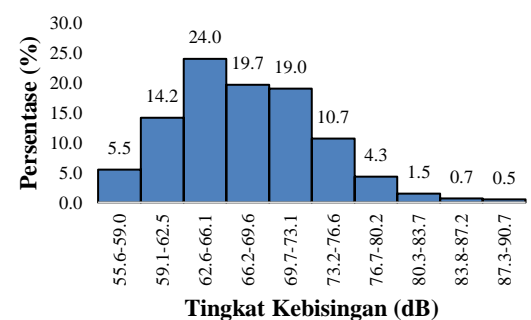
Pukul 07.00-08.00 WITA



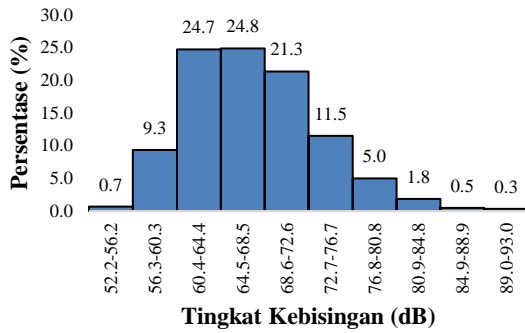
Pukul 08.00-09.00 WITA



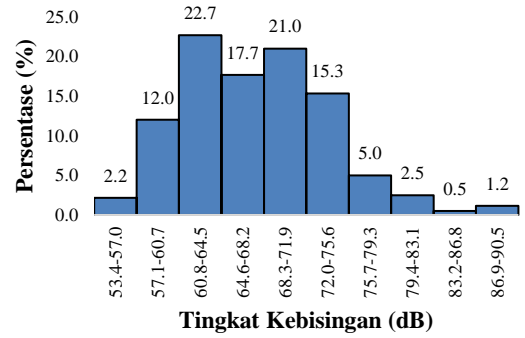
Pukul 09.00-10.00 WITA



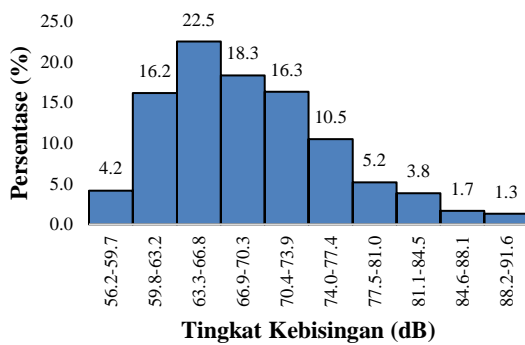
Pukul 10.00-11.00 WITA



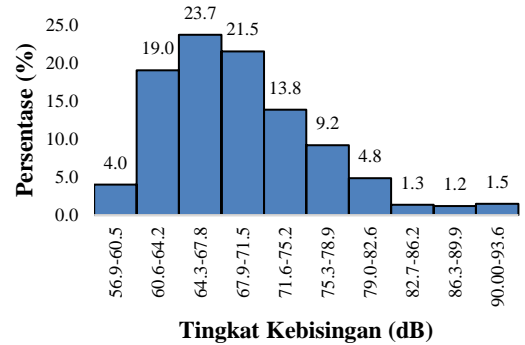
Pukul 11.00-12.00 WITA



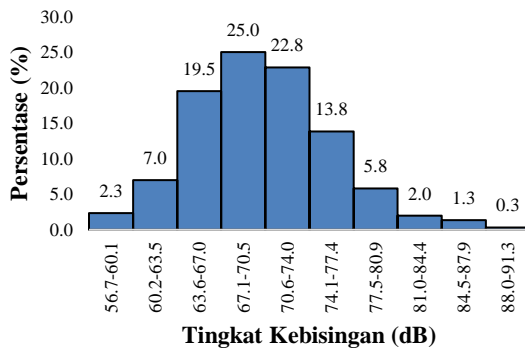
Pukul 12.00-13.00 WITA



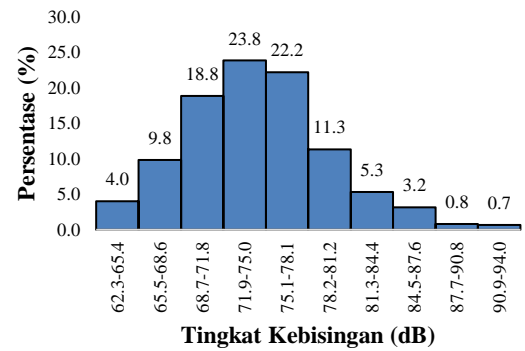
Pukul 13.00-14.00 WITA



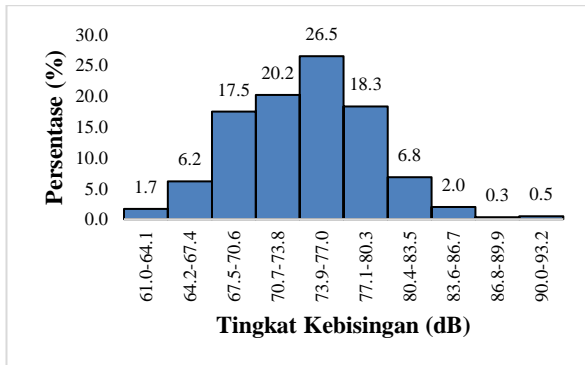
Pukul 14.00-15.00 WITA



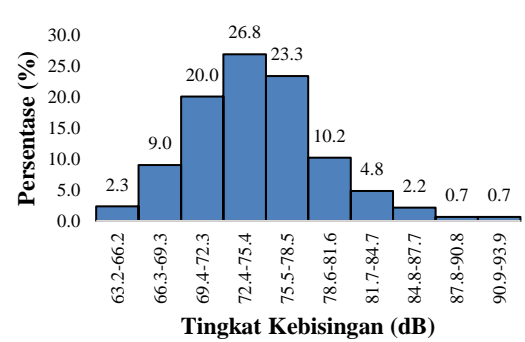
Pukul 15.00-16.00 WITA



Pukul 16.00-17.00 WITA

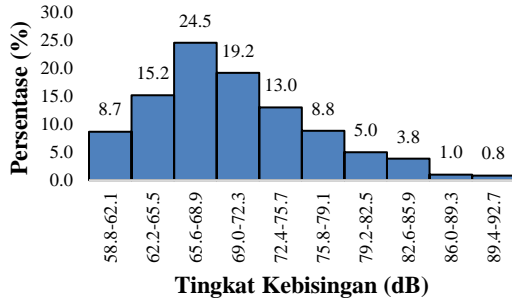


Pukul 17.00-18.00 WITA

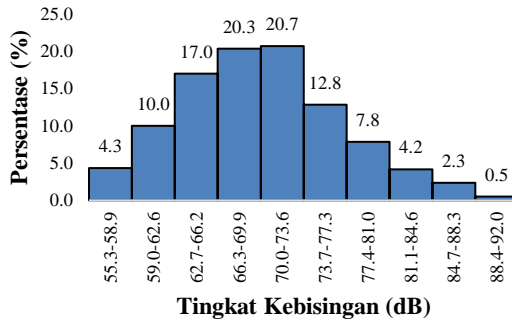


Pukul 18.00-19.00 WITA

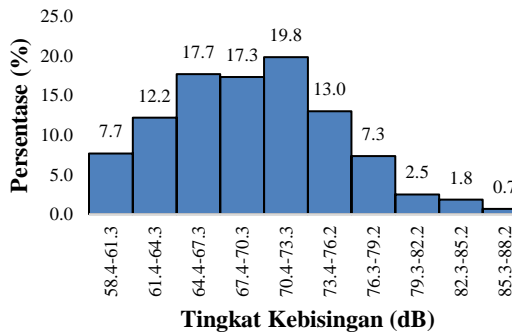
I. Titik Pengamatan F9



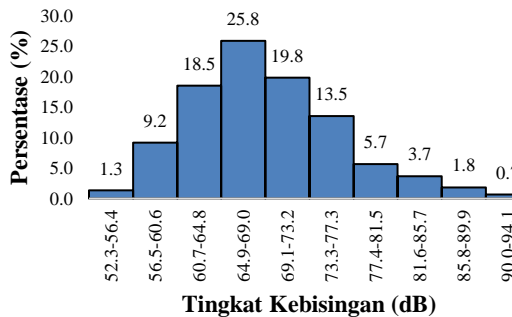
Pukul 07.00-08.00 WITA



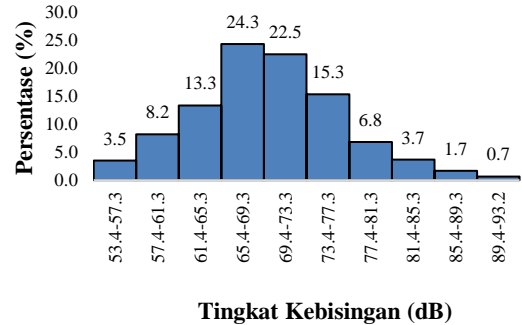
Pukul 09.00-10.00 WITA



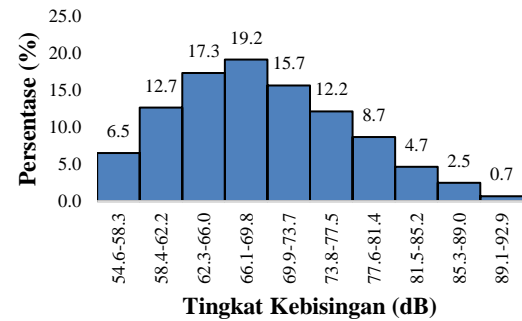
Pukul 11.00-12.00 WITA



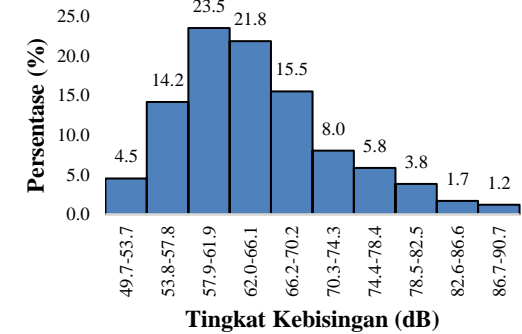
Pukul 13.00-14.00 WITA



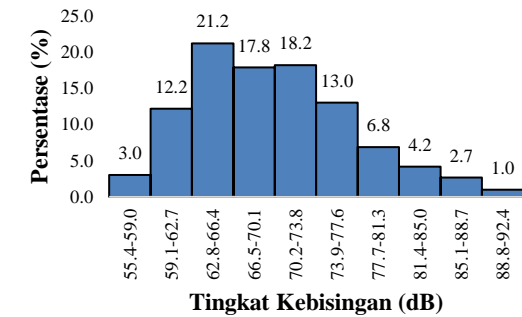
Pukul 10.00-11.00 WITA



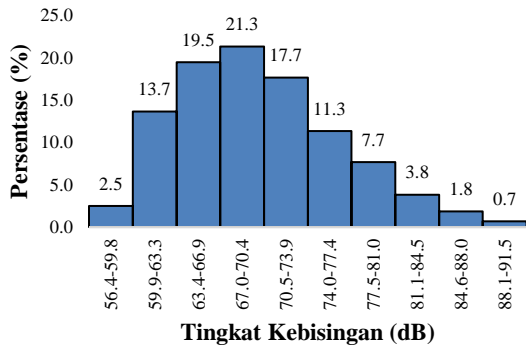
Pukul 14.00-15.00 WITA



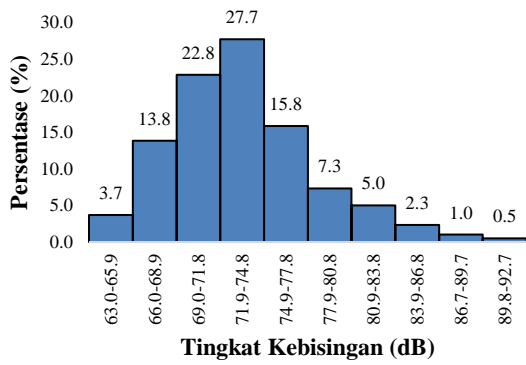
Pukul 12.00-13.00 WITA



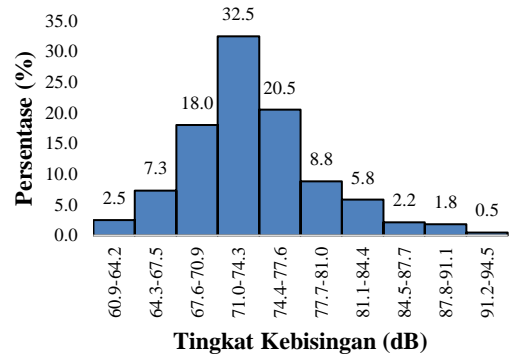
Pukul 14.00-15.00 WITA



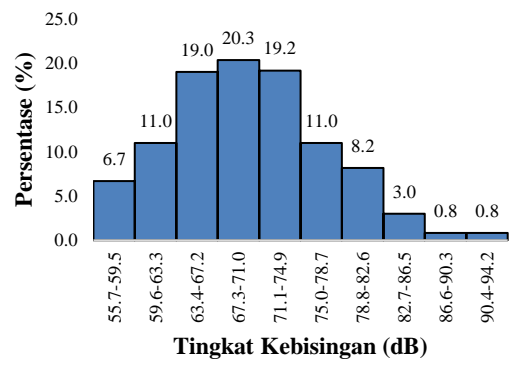
Pukul 15.00-16.00 WITA



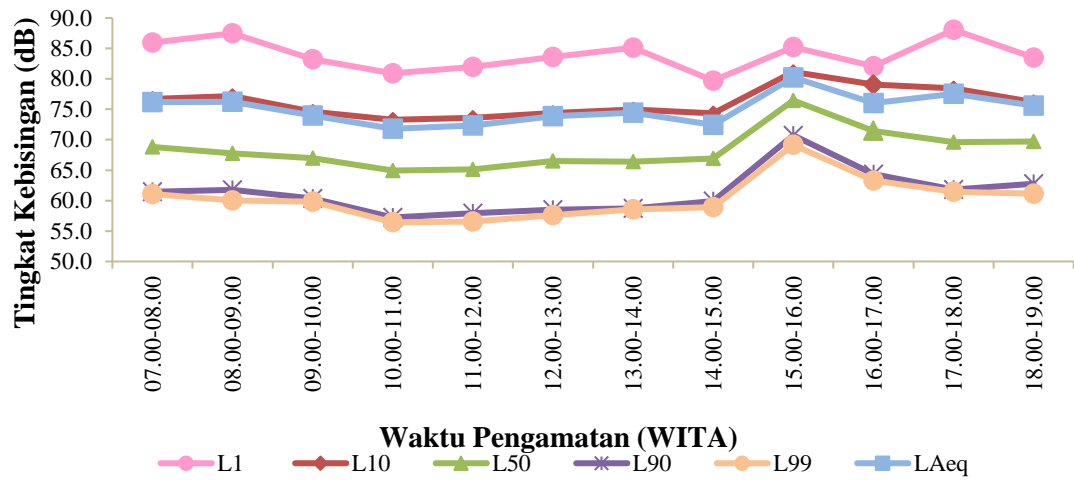
Pukul 17.00-18.00 WITA



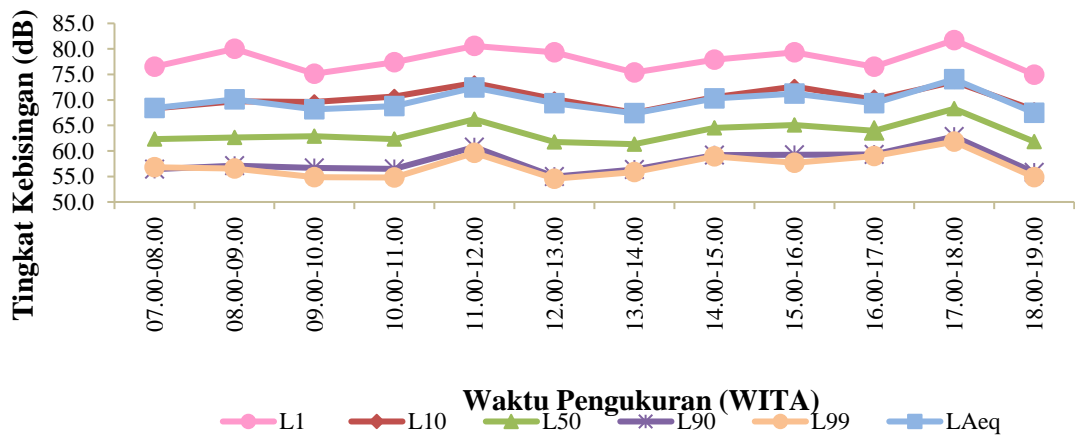
Pukul 18.00-19.00 WITA



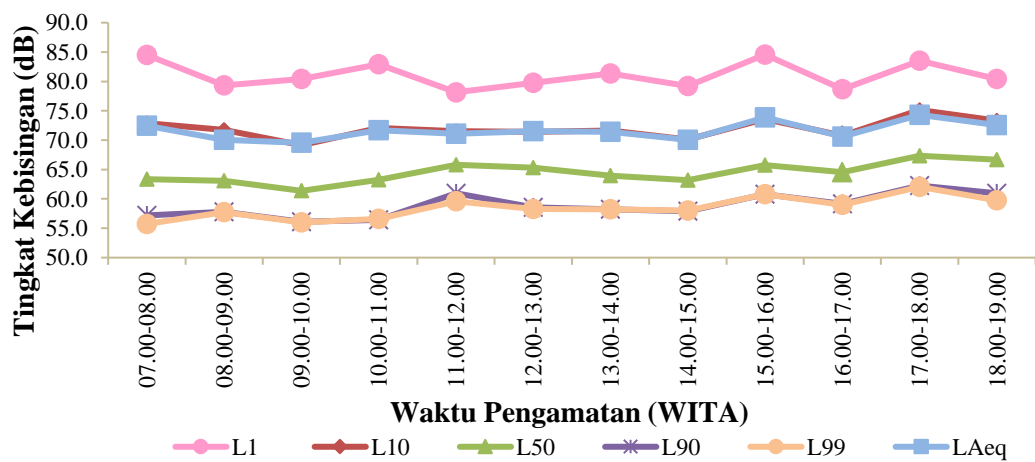
Lampiran 4. Tingkat Kebisingan



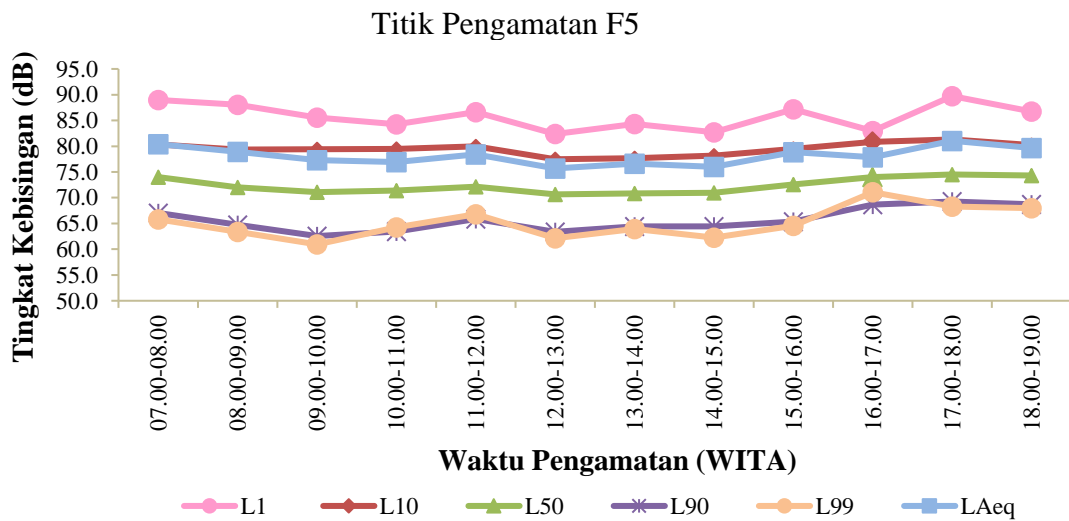
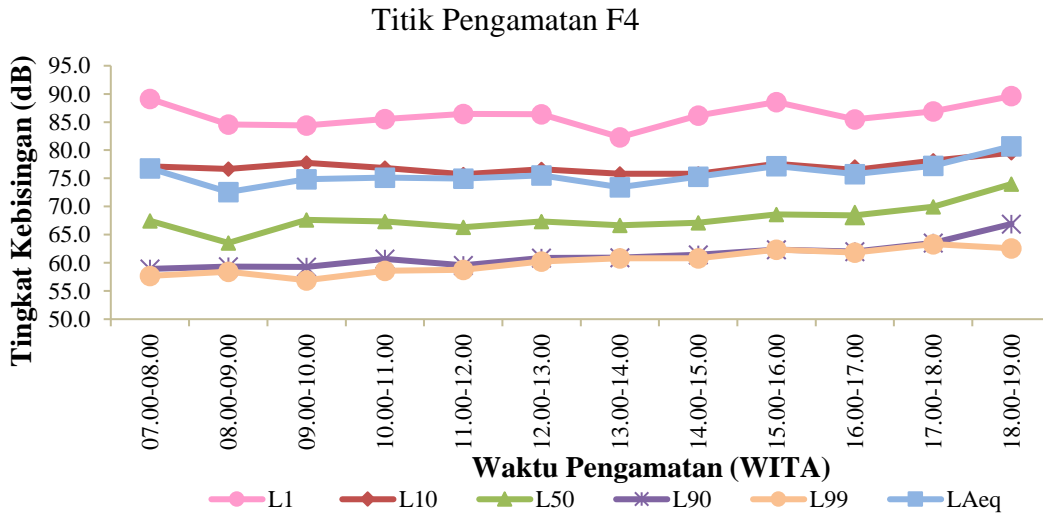
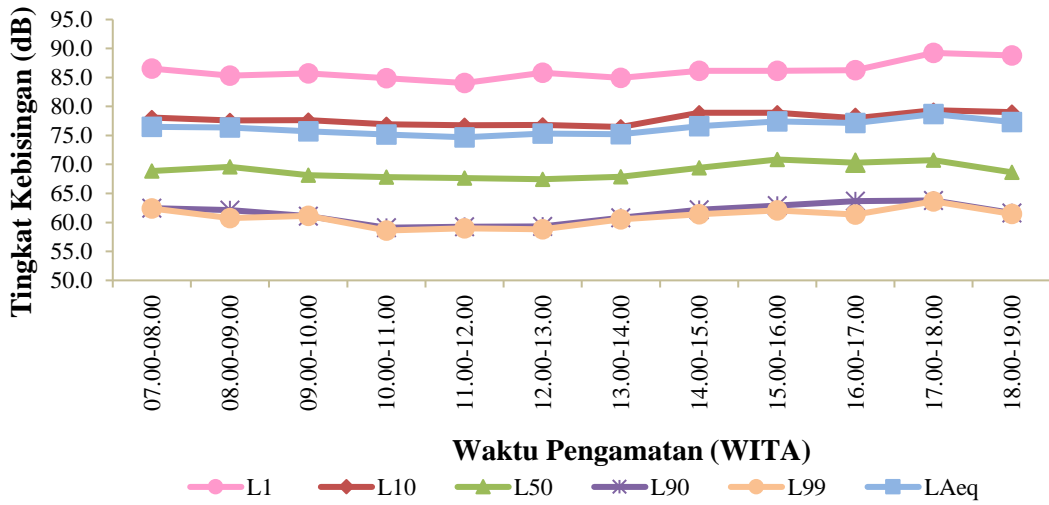
Titik Pengamatan F1

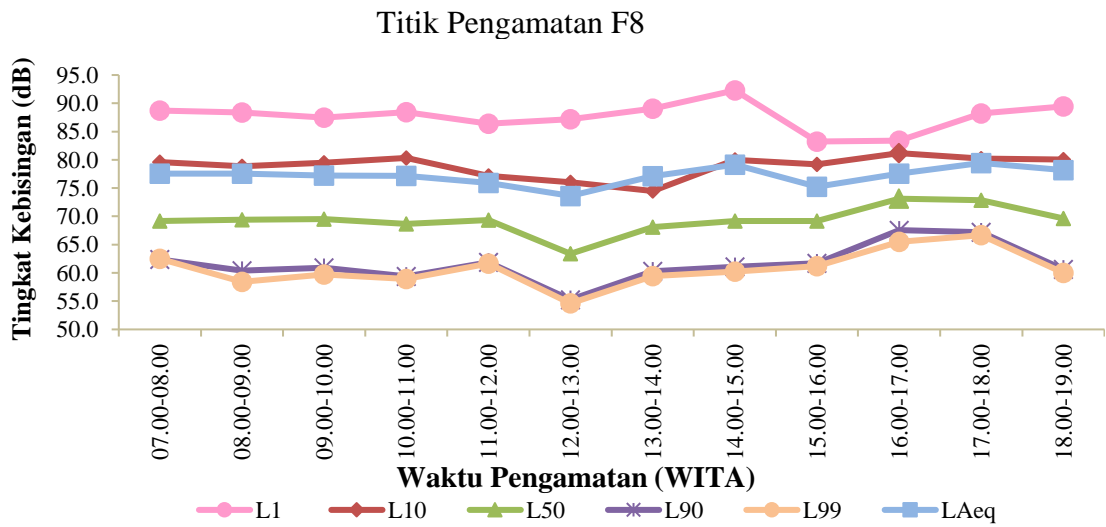
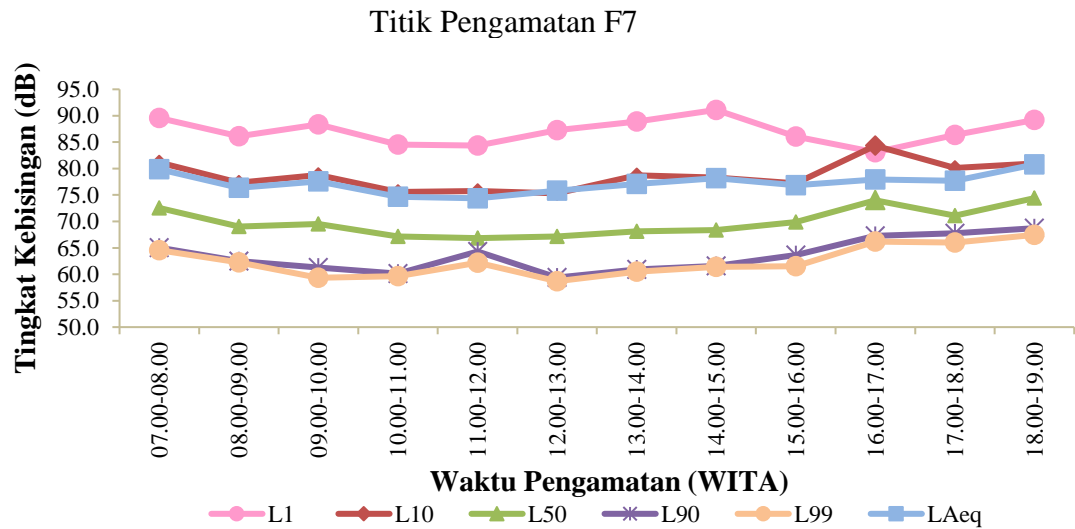
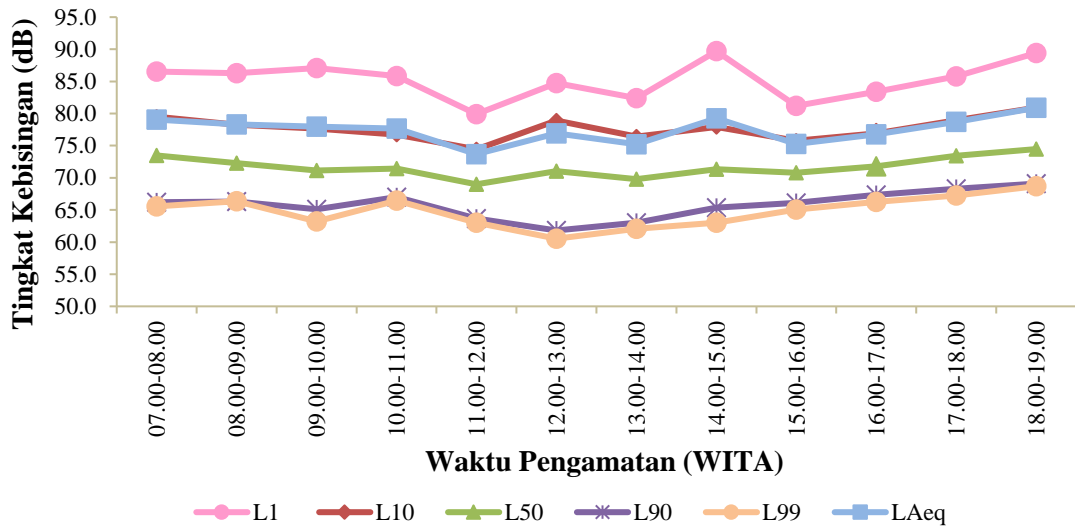


Titik Pengamatan F2

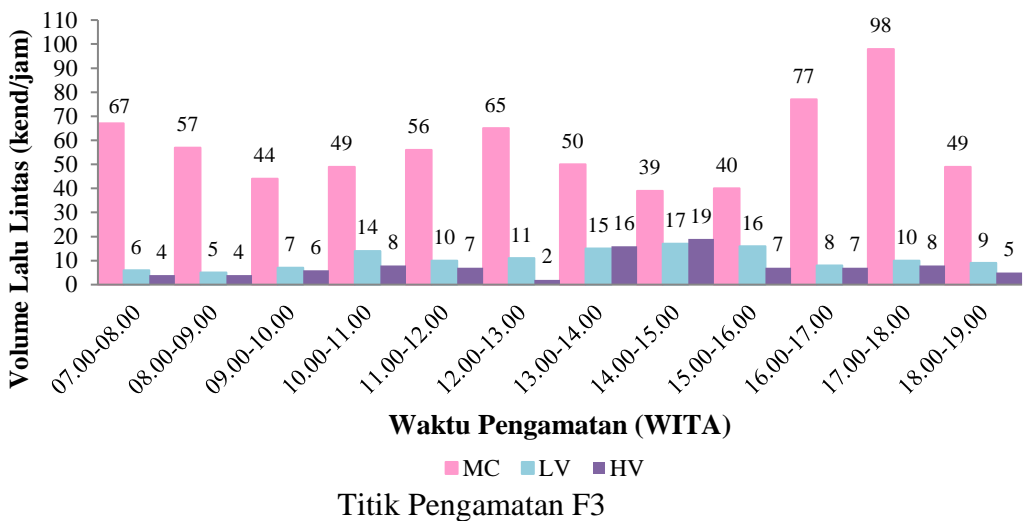
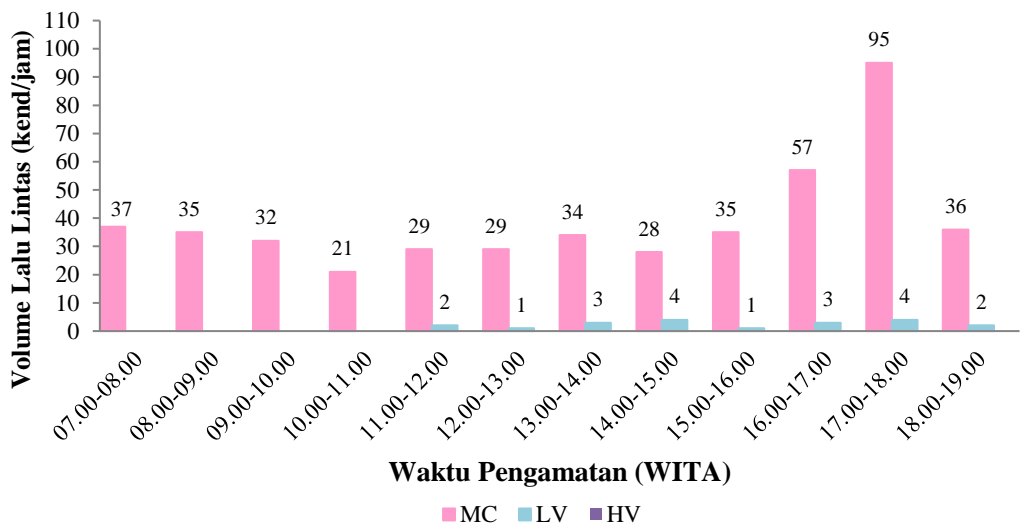
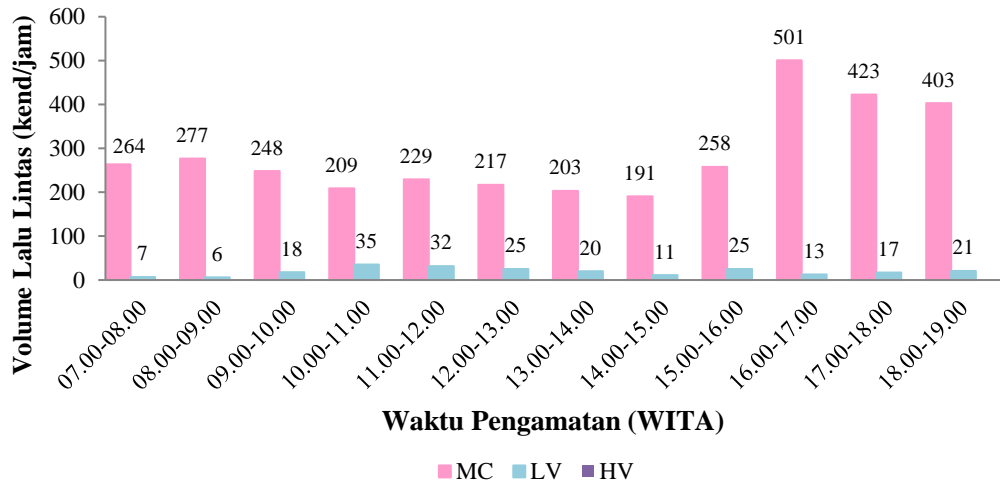


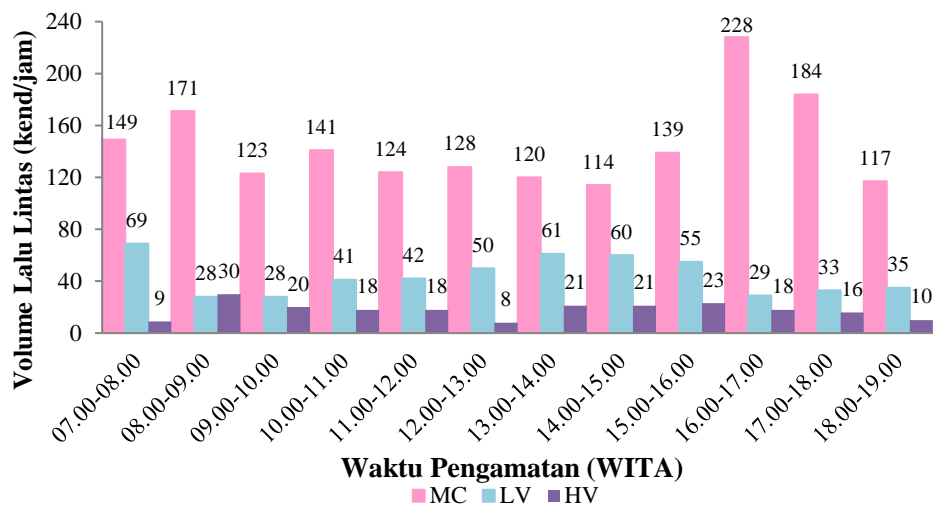
Titik Pengamatan F3



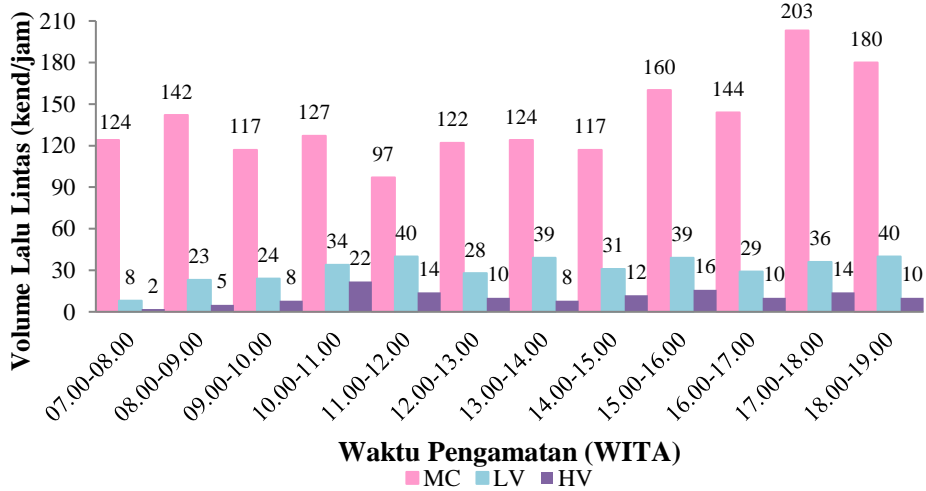


Lampiran 5. Volume Lalu Lintas

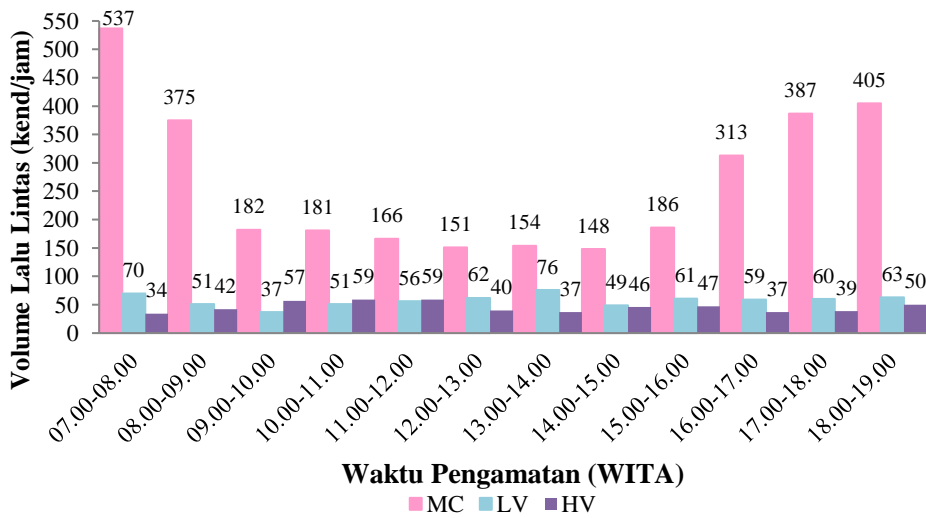




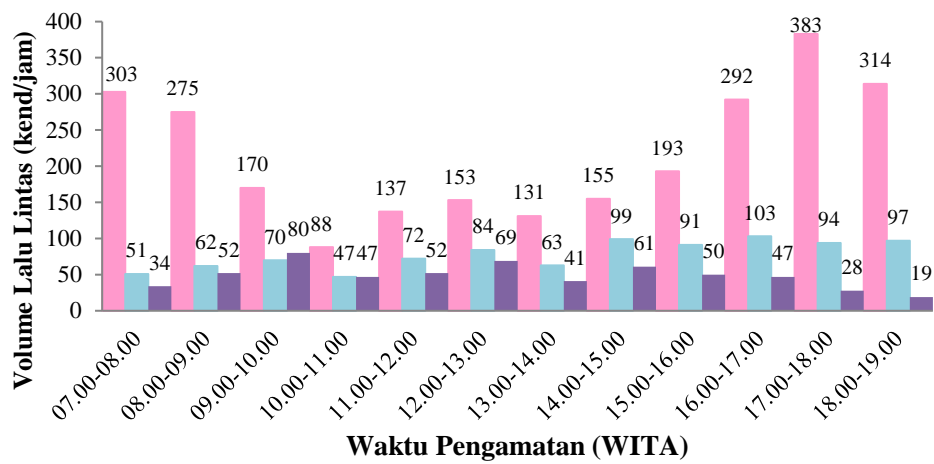
Titik Pengamatan F4



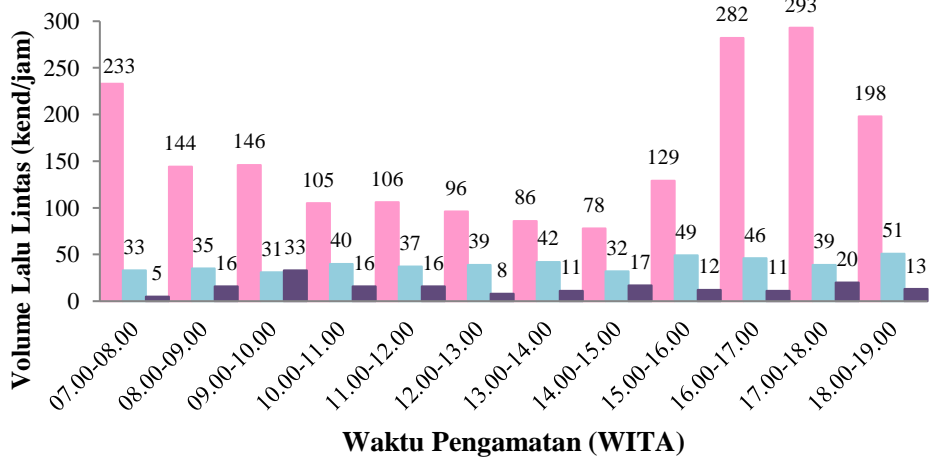
Titik Pengamatan F5



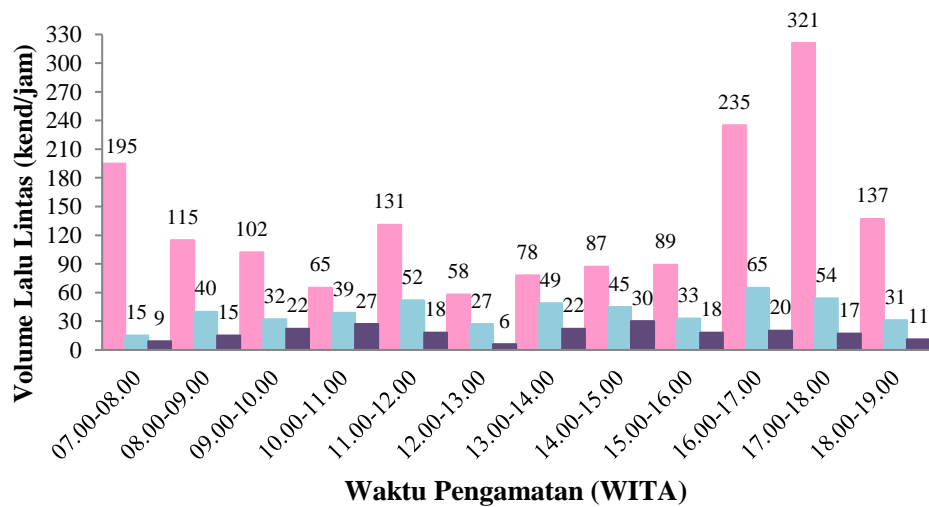
Titik Pengamatan F6



Titik Pengamatan F7

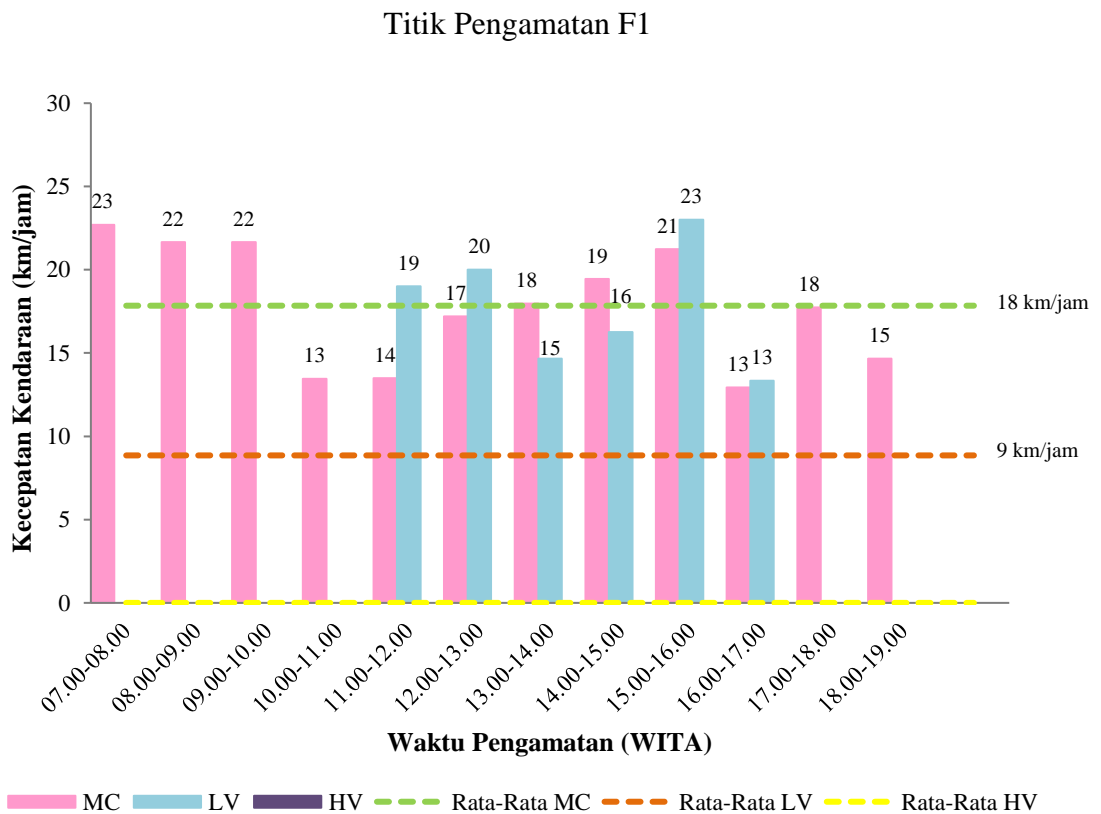
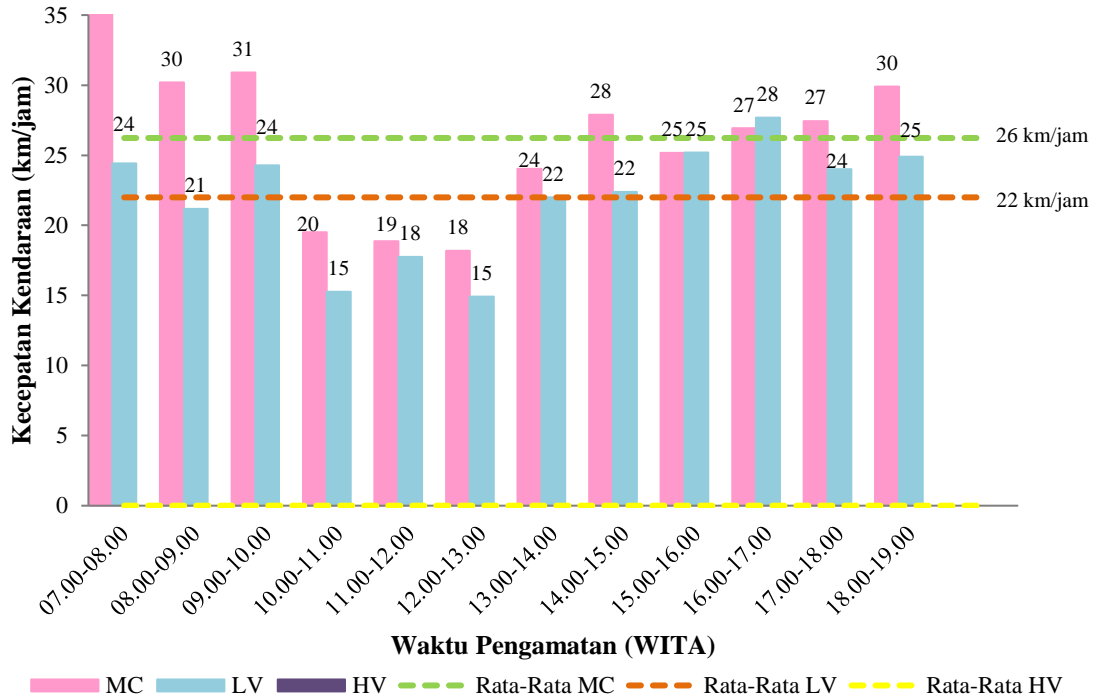


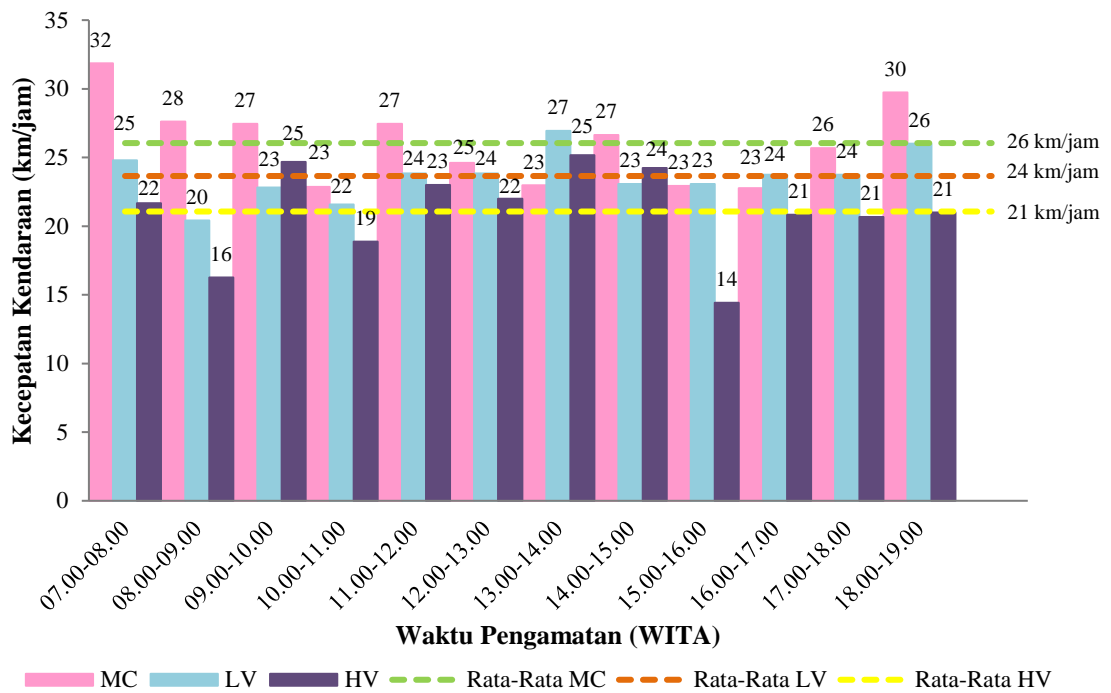
Titik Pengamatan F8



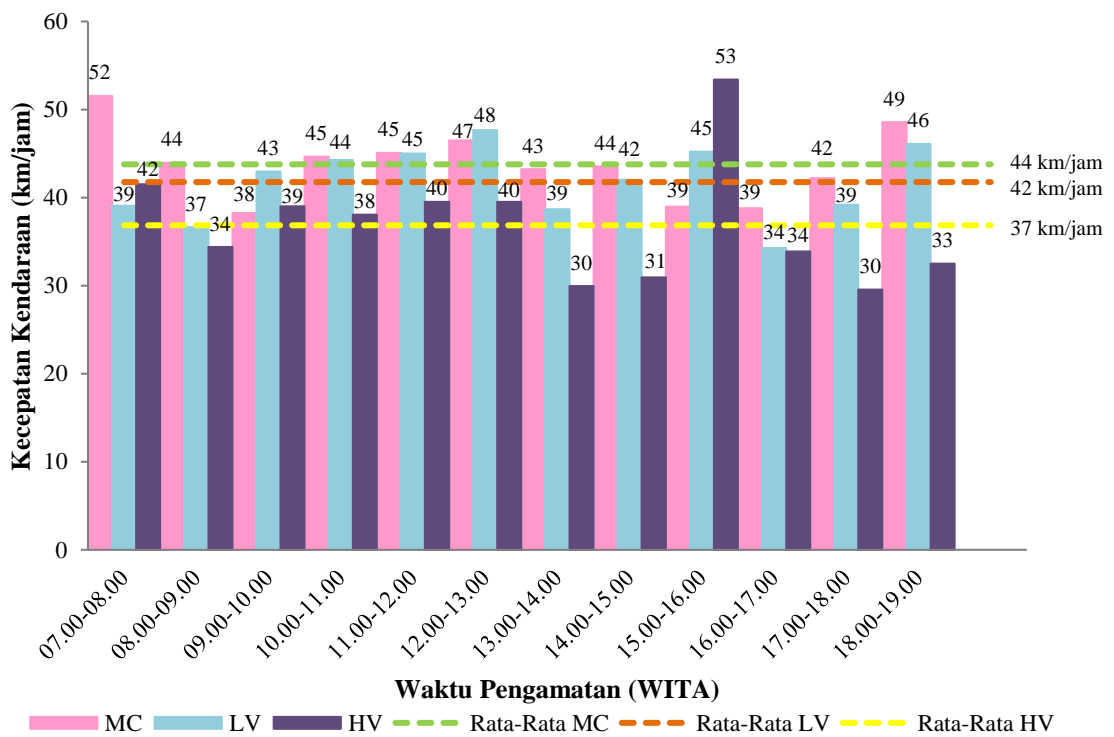
Titik Pengamatan F9

Lampiran 6. Kecepatan Kendaraan

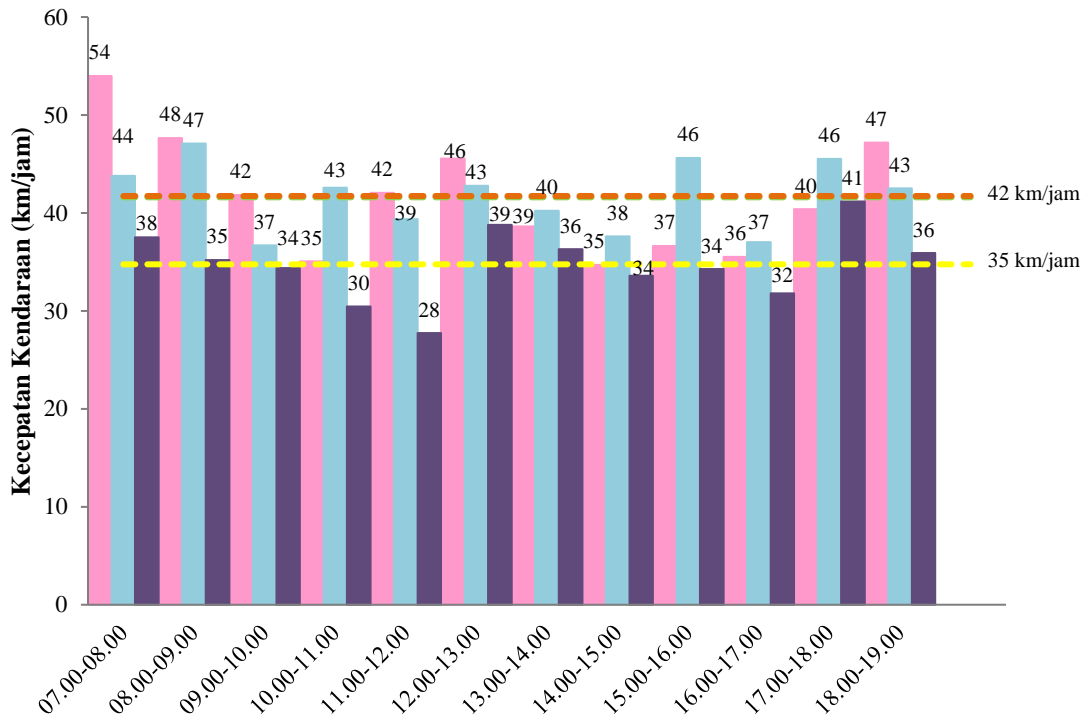




Titik Pengamatan F3



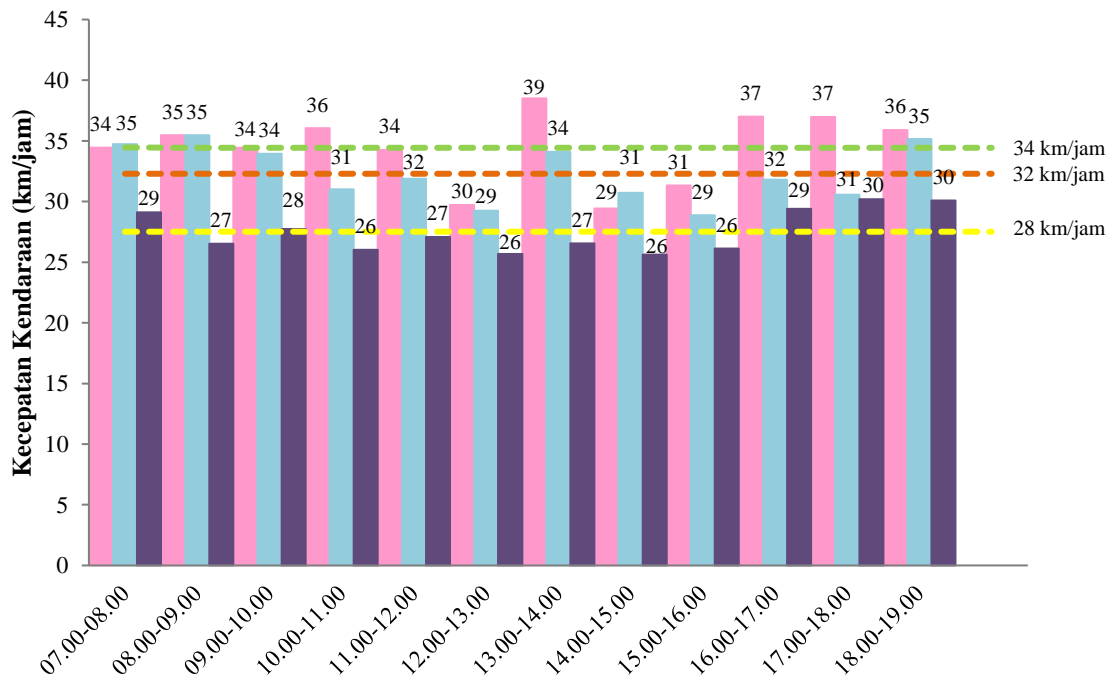
Titik Pengamatan F4



Waktu Pengamatan (WITA)

■ MC ■ LV ■ HV --- Rata-Rata MC --- Rata-Rata LV --- Rata-Rata HV

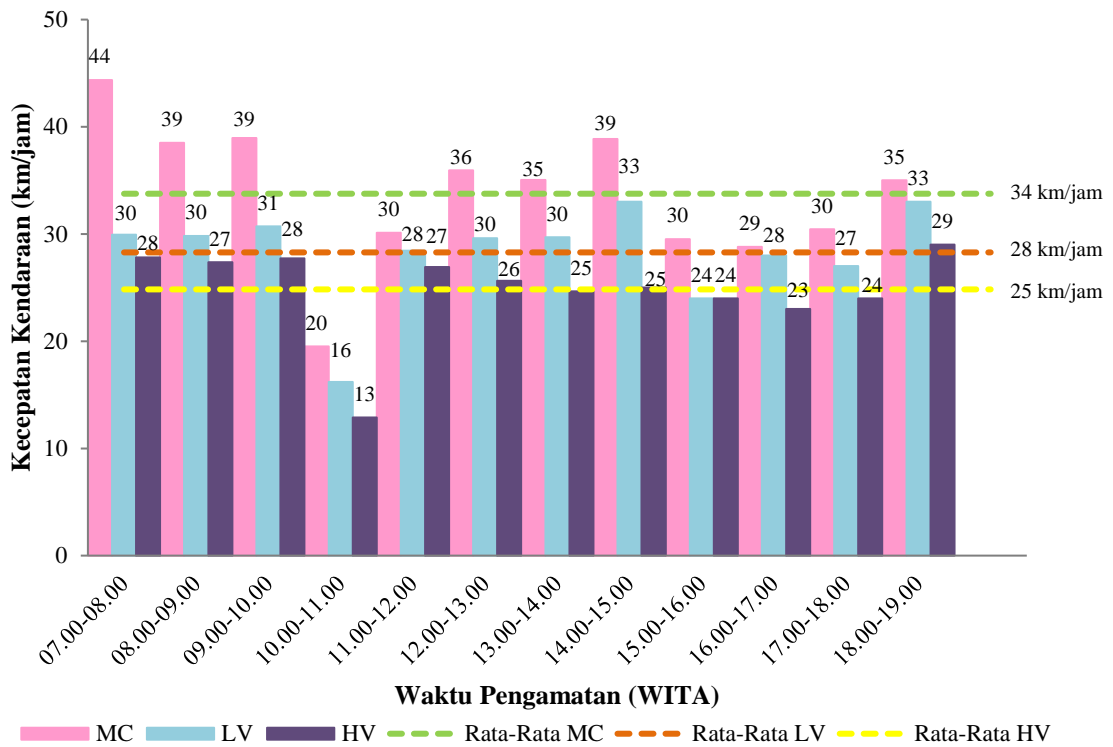
Titik Pengamatan F5



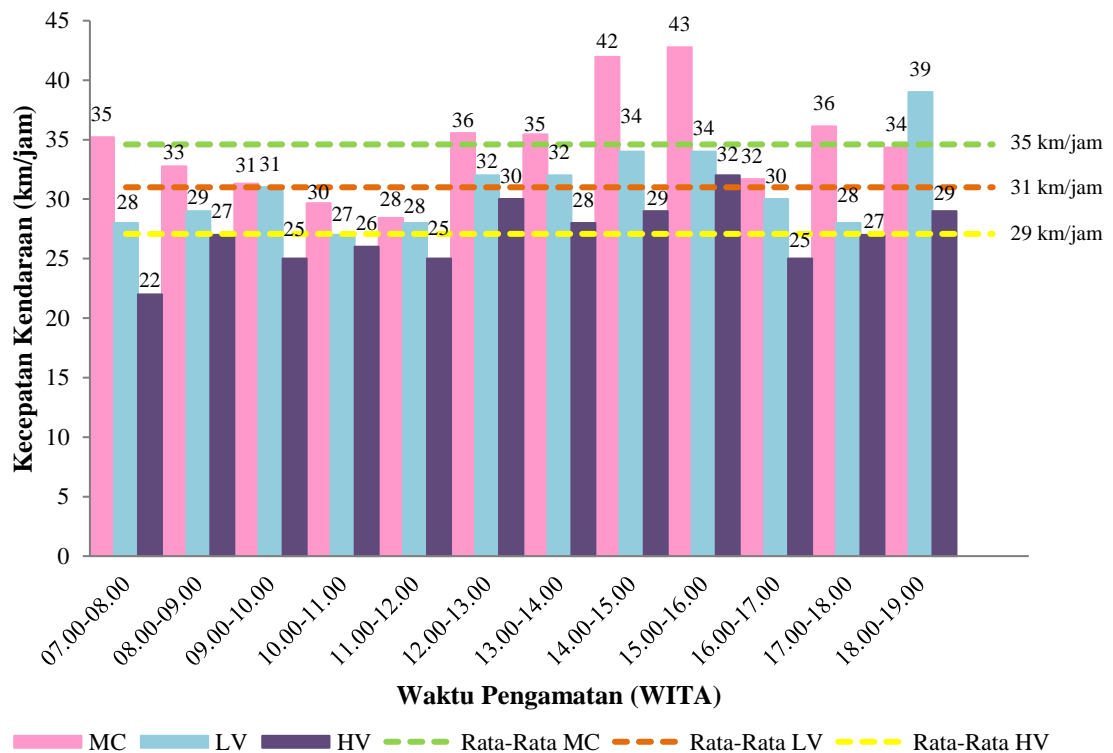
Waktu Pengamatan (WITA)

■ MC ■ LV ■ HV --- Rata-Rata MC --- Rata-Rata LV --- Rata-Rata HV

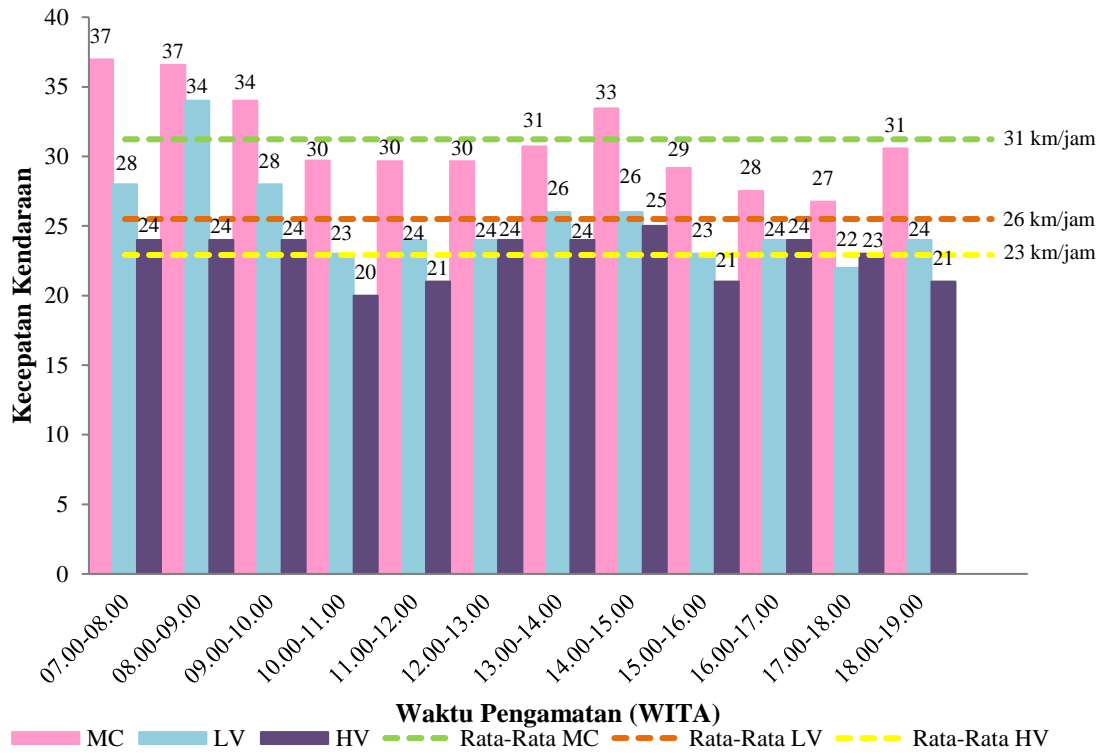
Titik Pengamatan F6



Titik Pengamatan F7

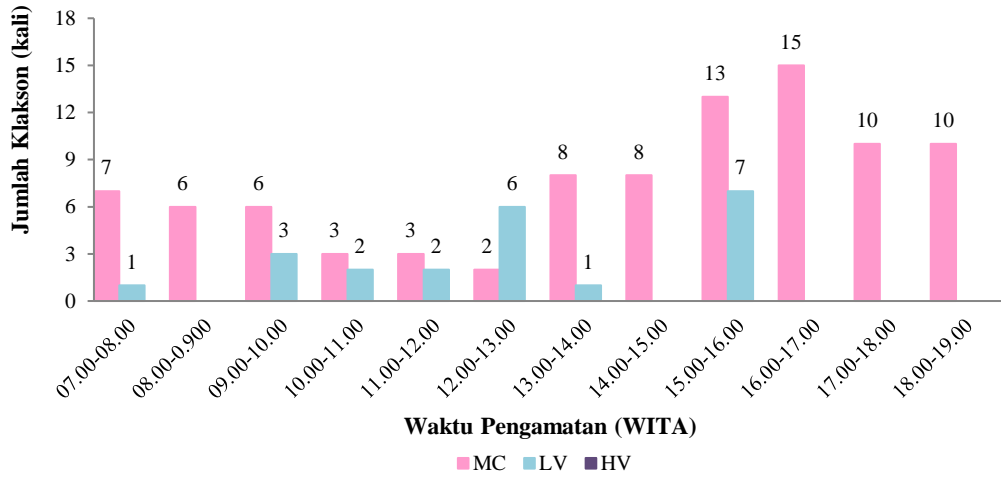


Titik Pengamatan F8

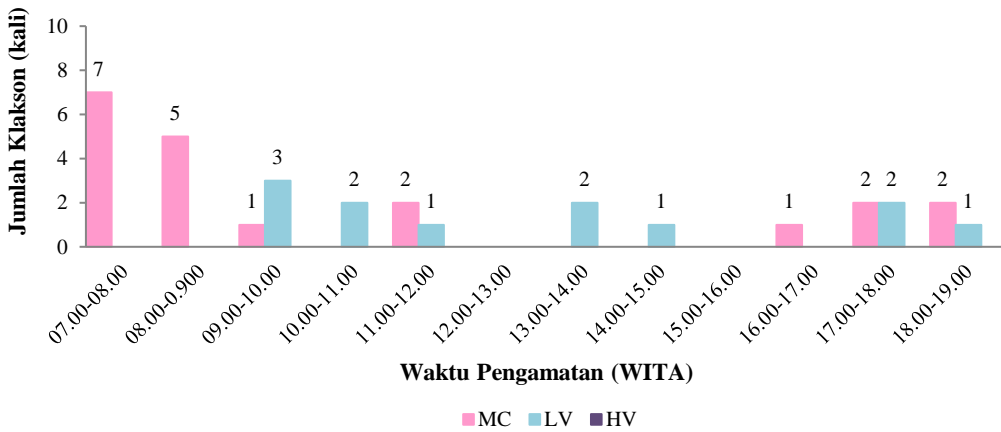


Titik Pengamatan F9

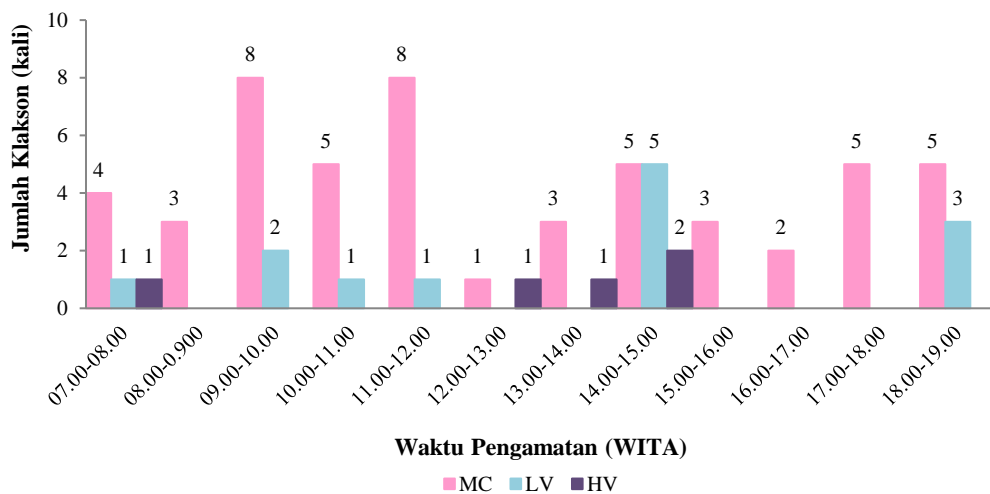
Lampiran 7. Jumlah Klakson



Titik Pengamatan F1



Titik Pengamatan F2



Titik Pengamatan F3

