

## DAFTAR PUSTAKA

- Allen, G.R. 2007. Conservation hotspots of biodiversity and endemism for Indo-Pacific coral reef fishes. *Aquatic Conservation: Marine and Freshwater Ecosystems*. 18(5):541–556.
- Allen, G.R. , Steene, R. & Allen, M. 1998. A guide to angelfishes and butterflyfishes. cod. Odyssey Publishing/Tropical Reef Research. Odyssey Publishing/Tropical Reef Research.,. 250 p.
- Allen, G.R. , Steene, R. , Humann, P. & DeLoach, N. 2003. Reef Fish Identification: Tropical Pacific. Illustrate ed. cod. New World. 470 p.
- Bell, J.J. & Smith, D. 2004. Ecology of sponge assemblages (Porifera) in the Wakatobi region, south-east Sulawesi, Indonesia: Richness and abundance. *Journal of the Marine Biological Association of the United Kingdom*. 84(3):581–591.
- Bellwood, D.R. , Hughes, T.P. , Connolly, S.R. & Tanner, J. 2005. Environmental and geometric constraints on Indo-Pacific coral reef biodiversity. *Ecology Letters*. 8(6):643–651.
- Bellwood, D.R. , Klanten, S. , Cowman, P.F. , Pratchett, M.S. , Konow, N. & Van Herwerden, L. 2010. Evolutionary history of the butterflyfishes (f: Chaetodontidae) and the rise of coral feeding fishes. *Journal of Evolutionary Biology*. 23(2):335–349.
- Berumen, M.L. , Pratchett, M.S. & Goodman, B.A. .2011. *Relative gut lengths of coral reef butterflyfishes (Pisces: Chaetodontidae)*. *Coral Reefs*.
- Berumen, M.L. , Pratchett, M.S. & McCormick, M.I. 2005. Within-reef differences in diet and body condition of coral-feeding butterflyfishes (Chaetodontidae). *Marine Ecology Progress Series*. 287:217–227.
- Blake, R.W. 2004. Fish functional design and swimming performance. *Journal of Fish Biology*. 65(5):1193–1222.
- Bouchon-Navaro, Y. & Bouchon, C. 1989. Correlations between chaetodontid fishes and coral communities of the Gulf of Aqaba (Red Sea). 25(1):47–60.
- Bouchon-Navaro, Y. , Bouchon, C. & Harmelin-Vivien, M.L. .1985. *Impact of coral degradation on a chaetodontid fish assemblage*. *Proceedings of 5th International Coral Reef Congress*, pp. 427–432.
- Carpenter, K.E. & Springer, V.G. 2005. The center of the center of marine shore fish biodiversity: The Philippine Islands. *Environmental Biology of Fishes*. 72(4):467–480.
- Clifton, J. , Unsworth, R.K.F. & Smith, D.J. 2013. Marine research and conservation in the Coral Triangle. cod. *Marine Research and Conservation in the Coral Triangle*.

244 p.

- Cole, A.J. , Pratchett, M.S. & Jones, G.P. 2008. Diversity and functional importance of coral-feeding fishes on tropical coral reefs. *Fish and Fisheries*. 9(3):286–307.
- Cowman, P.F. & Bellwood, D.R. 2011. Coral reefs as drivers of cladogenesis: Expanding coral reefs, cryptic extinction events, and the development of biodiversity hotspots. *Journal of Evolutionary Biology*.
- Dahuri, R. 2003. Keanekaragaman hayati laut: aset pembangunan berkelanjutan Indonesia. Gramedia Pustaka Utama.,. 412 p.
- Dickens, L.C. , Goatley, C.H.R. , Tanner, J.K. & Bellwood, D.R. 2011. Quantifying relative diver effects in underwater visual censuses. *PLoS ONE*. 6(4):6–8.
- Dodge, R.E. , Logan, A. & Antonius, A. 1982. Quantitative reef assessment studies in Bermuda: a comparison of methods and preliminary results. *Bulletin of Marine Science*. 32(3):745–760.
- Elliott, J.P. & Bellwood, D.R. 2003. Alimentary tract morphology and diet in three coral reef fish families. *Journal of Fish Biology*. :1598–1609.
- Faricha, A. , Edrus, I.N. , Suharti, S.R. , Utama, R.S. , Budiyanto, A. & Salatalohi, A. 2020. Relationship Between Species Composition of Butterflyfishes and Coral Cover (Case Study: Taka Bonerate National Park). *ILMU KELAUTAN: Indonesian Journal of Marine Sciences*. 25(3):121–126.
- Fazekas, K.J.J. 2019. Effects of Coral Reef Habitat Complexity on the Community Composition and Trophic Structure of Marine Fish Assemblages in Indonesia's Wakatobi Marine National Park. :89.
- Ferry-Graham, L.A. , Wainwright, P.C. & Bellwood, D.R. 2001a. Prey capture in long-jawed butterflyfishes (Chaetodontidae): The functional basis of novel feeding habits. *Journal of Experimental Marine Biology and Ecology*.
- Ferry-Graham, L.A. , Wainwright, P.C. , Darrin Hulsey, C. & Bellwood, D.R. 2001b. Evolution and mechanics of long jaws in butterflyfishes (Family Chaetodontidae). *Journal of Morphology*.
- Fessler, J.L. & Westneat, M.W. 2007. Molecular phylogenetics of the butterflyfishes (Chaetodontidae): Taxonomy and biogeography of a global coral reef fish family. *Molecular Phylogenetics and Evolution*. 45(1):50–68.
- Findley, J.S. & Findley, M.T. 2001. Global, regional, and local patterns in species richness and abundance of butterflyfishes. *Ecological Monographs*. 71(1):69–91.
- Fulton, C.J. , Bellwood, D.R. & Wainwright, P.C. 2001. The relationship between swimming ability and habitat use in wrasses (Labridae). *Marine Biology*. 139(1):25–33.

- Gosline, A. 1985. Relationships among Some Relatively Deep Bodied Percoid Fish Groups. *Japanese Journal of Ichthyology*. 31(4):351–357.
- Graham, N.A.J. 2007. Ecological versatility and the decline of coral feeding fishes following climate driven coral mortality. *Marine Biology*. 153(2):119–127.
- Haapkylä, J. , Melbourne-Thomas, J. & Flavell, M. 2015. The association between coral communities and disease assemblages in the Wakatobi Marine National Park, south-eastern Sulawesi, Indonesia. *Marine and Freshwater Research*. 66(10):948–955.
- Halford, A. , Cheal, A.J. , Ryan, D. & Williams, D.M.B. 2004. Resilience to large-scale disturbance in coral and fish assemblages on the great barrier reef. *Ecology*. 85(7):1892–1905.
- Harmelin-Vivien, M. ~L. & Bouchon-Navaro, Y. 1983. Feeding diets and significance of coral feeding among Chaetodontid fishes in Moorea (French Polynesia). *Coral Reefs*. 2(2):119–127.
- Hourigan, T.F. , Timothy, C.T. & Reese, E.S. 1988. Coral Reef Fishes as Indicators of Environmental Stress in Coral Reefs. In: *Marine Organisms as Indicators*. DOI: 10.1007/978-1-4612-3752-5\_6.
- Hughes, T.P. , Baird, A.H. , Bellwood, D.R. , Card, M. , Connolly, S.R. , Folke, C. , Grosberg, R. , Hoegh-Guldberg, O. , Jackson, J.B.C. , Kleypas, J. , Lough, J.M. , Marshall, P. , Nyström, M. , Palumbi, S.R. , Pandolfi, J.M. , Rosen, B. & Roughgarden, J. .2003. *Climate change, human impacts, and the resilience of coral reefs*. vol. 301, *Science*, pp. 929–933.
- Hutcheson, K. 1970. A Test for Comparing Diversities Based on The Shannon Formula. *Journal of Theoretical Biology*. 29(1):151–154.
- Johannes, R.E. , Alberts, J. , D’Elia, C. , Kinzie, R.A. , Pomeroy, L.R. , Sottile, W. , Wiebe, W. , Marsh, J.A. , Helfrich, P. , Maragos, J. , Meyer, J. , Smith, S. , Crabtree, D. , Roth, A. , McCloskey, L.R. , Betzer, S. , Marshall, N. , Pilson, M.E.Q. , Telek, G. , Clutter, R.I. , DuPaul, W.D. , Webb, K.L. & Wells, J.M. 1972. The Metabolism of Some Coral Reef Communities: A Team Study of Nutrient and Energy Flux at Eniwetok. *BioScience*. 22(9):541–543.
- Kelley, R. 2009. Indo Pacific Coral Finder. *BYO Guides.*, Townsville. 34 p.
- Keputusan Menteri Negara Lingkungan Hidup, .2001. *Kriteria Baku Kerusakan Terumbu Karang*. pp. 1–8.
- Konow, N. , Bellwood, D.R. , Wainwright, P.C. & Kerr, A.M. 2008. Evolution of novel jaw joints promote trophic diversity in coral reef fishes. *Biological Journal of the Linnean Society*.
- Konow, N. & Ferry, L.A. 2013. Functional morphology of butterflyfishes. In: *Biology of Butterflyfishes*. pp. 19–47. DOI: 10.1201/b15458-3.

- Kulbicki, M. , Vigliola, L. , Wantiez, L. , Hubert, N. , Floeter, S.R. & Myers, R.F. 2013. Biogeography of butterflyfishes: A global model for reef fishes? In: *Biology of Butterflyfishes*. CRC Press., pp. 70–106. DOI: 10.1201/b15458.
- Lecchini, D. , Adjeroud, M. , Pratchett, M.S. , Cadoret, L. & Galzin, R. 2003. Spatial structure of coral reef fish communities in the Ryukyu Islands, southern Japan. *Oceanologica Acta*. 26(5–6):537–547.
- Madduppa, H.H. 2006. Kajian Ekobiologi Ikan Kepe-kepe (*Chaetodon octofasciatus*, Bloch 1787) dalam Mendeteksi Kondisi Ekosistem Terumbu Karang di Pulau Petondan Timur, Kepulauan Seribu, Jakarta. IPB.
- Madduppa, H.H. , Koropitan, A.F. , Damar, A. , Subhan, B. , Taufik, M. , Minsaris, L.O.A. , Taurusman, A.A. , Ramli, A. & Purwanto, A.B. 2020. Ecological vulnerability of coral reef ecosystem in wakatobi national park during Indian ocean dipole event. *HAYATI Journal of Biosciences*. 27(1):57–70.
- Martínez, M.L. , Intralawan, A. , Vázquez, G. , Pérez-Maqueo, O. , Sutton, P. & Landgrave, R. 2007. The coasts of our world: Ecological, economic and social importance. *Ecological Economics*. 63(2–3):254–272.
- McClanahan, T.R. 1995. A coral reef ecosystem-fisheries model: impacts of fishing intensity and catch selection on reef structure and processes. *Ecological Modelling*. 80(1):1–19.
- McClanahan, T.R. & Arthur, R. 2001. The Effect of Marine Reserves and Habitat on Populations of East African Coral Reef Fishes. *Ecological Applications*. 11(2):559–569.
- McClanahan, T.R. & Muthiga, N.A. 1988. Changes in Kenyan coral reef community structure and function due to exploitation. *Hydrobiologia*. 166(3):269–276.
- Motta, P.J. 1984. Mechanics and Functions of Jaw Protrusion in Teleost Fishes: A Review. *Copeia*. 1984(1):1.
- Nagelkerken, I. & Munday, P.L. 2016. Animal behaviour shapes the ecological effects of ocean acidification and warming: Moving from individual to community-level responses. *Global Change Biology*. 22(3):974–989.
- Nybakken, J.Wi. 1992. *Marine biology: an ecological approach*. V ed. Benjamin-Cummings., San Francisco. xi, 516 p.
- Pratchett, M.S. 2005. Dietary overlap among coral-feeding butterflyfishes (*Chaetodontidae*) at Lizard Island, northern Great Barrier Reef. *Marine Biology*. 148(2):373–382.
- Pratchett, M.S. & Berumen, M.L. 2008. Interspecific variation in distributions and diets of coral reef butterflyfishes (*Teleostei: Chaetodontidae*). *Journal of Fish Biology*. 73(7):1730–1747.

- Pratchett, M.S. , Berumen, M.L. & Kapoor, B.G. 2013. *Biology of Butterflyfishes*. Pratchett M. S., Berumen M. L. & Kapoor B. G. (editors). *cod. Biology of Butterflyfishes*. CRC Press.,. 1–352 p.
- Pratchett, M.S. , Berumen, M.L. , Marnane, M.J. , Eagle, J. V. & Pratchett, D.J. 2008a. Habitat associations of juvenile versus adult butterflyfishes. *Coral Reefs*. 27(3):541–551.
- Pratchett, M.S. , Hoey, A.S. , Cvitanovic, C. , Hobbs, J.P.A. & Fulton, C.J. 2014. Abundance, diversity, and feeding behavior of coral reef butterflyfishes at Lord Howe Island. *Ecology and Evolution*. 4(18):3612–3625.
- Pratchett, M.S. , Munday, P.L. , Wilson, S.K. , Graham, N.A.J. , Cinner, J.E. , Bellwood, D.R. , Jones, G.P. , Polunin, N.V.C. & McClanahan, T.R. 2008b. Effects of climate-induced coral bleaching on coral-reef fishes-ecological and economic consequences. *Oceanography and Marine Biology*. 46(April 2014):251–296.
- Pratchett, M.S. , Wilson, S.K. & Baird, A.H. 2006. Declines in the abundance of Chaetodon butterflyfishes following extensive coral depletion. *Journal of Fish Biology*. 69(5):1269–1280.
- Reese, E.S. 1981. Predation on Corals by Fishes of the Family Chaetodontidae: Implications for Conservation and Management of Coral Reef Ecosystems. *Bulletin of Marine Science*. 31(3):594–604.
- Riansyah, A. , Hartono, D. & Kusuma, A.B. 2018. Ikan Kepe – kepe (Chaetodontidae) sebagai Bioindikator Kerusakan Perairan Ekosistem Terumbu Karang Pulau Tikus. *Majalah Ilmiah Biologi BIOSFERA: A Scientific Journal*. 35(2):103–110.
- Russ, G. & Alcala, A. 1989. Effects of intense fishing pressure on an assemblage of coral reef fishes. *Marine Ecology Progress Series*. 56(May 1982):13–27.
- Salinas-de-León, P. , Dryden, C. , Smith, D.J. & Bell, J.J. 2013. Temporal and spatial variability in coral recruitment on two Indonesian coral reefs: Consistently lower recruitment to a degraded reef. *Marine Biology*. 160(1):97–105.
- Scaps, P. & Denis, V. 2008. Can organisms associated with live scleractinian corals be used as indicators of coral reef status? *Atoll Research Bulletin*. (566):1–18.
- Sheppard, C.R.C. , Davy, S.K. & Pilling, G.M. 2009. *The Biology of Coral Reefs*. Oxford University Press.,. 1–352 p.
- Smith, D. , Pilgrim, S. & Cullen, L. 2012. Coral Reefs and People. In: *The SAGE Handbook of Environment and Society*. SAGE Publications Ltd., 1 Oliver's Yard, 55 City Road, London EC1Y 1SP United Kingdom. pp. 500–516. DOI: 10.4135/9781848607873.n35.
- Smith, S. V. 1978. Coral-reef area and the contributions of reefs to processes and resources of the world's oceans. *Nature*. 273(5659):225–226.

- Utomo, S.P. 2010. Kajian Hubungan Kondisi Terumbu Karang Kawasan Konservasi Laut Daerah Pulau Liwutongkidi , Kabupaten Buton. :1–94.
- Webb, P.W. 1984. Body form, locomotion and foraging in aquatic vertebrates. *Integrative and Comparative Biology*. 24(1):107–120.
- Westneat, M.W. 1990. Feeding mechanics of teleost fishes (Labridae; Perciformes): A test of four-bar linkage models. *Journal of Morphology*. 205(3):269–295.
- Westneat, M.W. & Wainwright, P.C. 1989. Feeding mechanism of *Epibulus insidiator* (Labridae; Teleostei): Evolution of a novel functional system. *Journal of Morphology*. 202(2):129–150.
- Williams, D.M. 1986. Temporal variation in the structure of reef slope fish communities (central Great Barrier Reef): short-term effects of *Acanthaster planci* infestation. *Marine Ecology Progress Series*. 28:157–164.
- Williams, D.M. 1991. Patterns and Processes in the Distribution of Coral Reef Fishes. *cod. The Ecology of Fishes on Coral Reefs*. ACADEMIC PRESS, INC., 437–474 p.
- Wilson, S.K. , Graham, N.A.J. , Pratchett, M.S. , Jones, G.P. & Polunin, N.V.C. 2006. Multiple disturbances and the global degradation of coral reefs: Are reef fishes at risk or resilient? *Global Change Biology*. 12(11):2220–2234.
- Zekeria, Z.A. , Dawit, Y. , Ghebremedhin, S. , Naser, M. & Videler, J.J. 2002. Resource partitioning among four butterflyfish species in the Red sea. *Marine and Freshwater Research*. 53(2):163–168.

## LAMPIRAN

Lampiran 1. Hasil uji ANOVA dua arah struktur komunitas karang keras. Menguji pengaruh Lokasi (SAM dan PK), Zona (*flat*, *crest* dan *slope*) dan interaksi (Lokasi\*Zona). Hasil yang signifikan dicetak dengan huruf tebal (Bold). Total transek pengamatan N = 18.

Variabel komunitas karang keras	Interaksi	Pengaruh Utama	
	Lokasi * Zona (P)	Lokasi (P)	Zona (P)
Total persentase tutupan	0,5479	<b>&lt;0,0417</b>	0,3088
Total genera	0,5960	0,3236	<b>0,0026</b>
H' (Shannon-Wiener <i>diversity index</i> )	0,4725	0,1709	<b>0,0003</b>

Lampiran 2. Hasil uji *post-hoc* Tukey total genera dan H' komunitas karang keras berdasarkan Zona. Hasil yang signifikan dicetak dengan huruf tebal (Bold). Total transek pengamatan N = 18.

Perbandingan stasiun (a vs. b)	P	Mean a	Mean b
Total Genera			
Flat vs. Crest	0.119	7	11
Flat vs. Slope	<b>0.0019</b>	7	15.33
Crest vs. Slope	0.088	11	15.33
H' (Shannon-Wiener <i>diveristy index</i> )			
Flat vs. Crest	0.0351	1.28	1.786
Flat vs. Slope	<b>0.0002</b>	1.28	2.328
Crest vs. Slope	<b>0.0242</b>	1.786	2.328

Lampiran 3. Persentase tutupan karang keras.

Spesies	SAMFlat	SAMCrest	SAMSlope	PKFLat	PKCrest	PKSlope	SAM	PK	Flat	Crest	Slope
<i>Acropora</i> sp.	2.17%	0.50%	2.50%	0.67%	0.83%	1.67%	1.72%	1.06%	1.42%	0.67%	2.08%
<i>Astreopora</i> sp.	-	0.17%	1.00%	0.17%	-	0.50%	0.39%	0.22%	0.08%	0.08%	0.75%
<i>Coeloseris</i> sp.	-	0.17%	0.17%	-	-	0.17%	0.11%	0.06%	-	0.08%	0.17%
<i>Diploastrea</i> sp.	-	0.50%	0.67%	-	0.33%	1.00%	0.39%	0.44%	-	0.42%	0.83%
<i>Echinophyllia</i> sp.	-	-	-	-	-	0.17%	-	0.06%	-	-	0.08%
<i>Echinopora</i> sp.	-	-	-	-	-	0.17%	-	0.06%	-	-	0.08%
<i>Favia</i> sp.	0.17%	0.17%	2.00%	0.50%	0.50%	0.67%	0.78%	0.56%	0.33%	0.33%	1.33%
<i>Favites</i> sp.	-	0.83%	0.67%	0.33%	0.33%	0.33%	0.50%	0.33%	0.17%	0.58%	0.50%
<i>Fungia</i> sp.	-	-	0.17%	0.33%	0.67%	0.17%	0.06%	0.39%	0.17%	0.33%	0.17%
<i>Galaxea</i> sp.	-	-	-	-	-	1.00%	-	0.33%	-	-	0.50%
<i>Gardineroseris</i> sp.	-	0.17%	0.17%	-	-	0.33%	0.11%	0.11%	-	0.08%	0.25%
<i>Goniastrea</i> sp.	0.17%	1.67%	0.17%	0.83%	4.00%	0.50%	0.67%	1.78%	0.50%	2.83%	0.33%
<i>Goniopora</i> sp.	-	0.17%	1.17%	-	0.17%	1.83%	0.44%	0.67%	-	0.17%	1.50%
<i>Herpolitha</i> sp.	-	-	-	-	0.17%	0.17%	-	0.11%	-	0.08%	0.08%
<i>Leptastrea</i> sp.	-	-	0.17%	-	-	-	0.06%	-	-	-	0.08%
<i>Leptoseris</i> sp.	-	-	0.17%	-	-	0.67%	0.06%	0.22%	-	-	0.42%
<i>Lobophyllia</i> sp.	-	-	0.17%	-	-	-	0.06%	-	-	-	0.08%
<i>Merulina</i> sp.	-	-	0.17%	-	-	0.17%	0.06%	0.06%	-	-	0.17%
<i>Montastraea</i> sp.	0.17%	0.50%	1.17%	-	-	0.67%	0.61%	0.22%	0.08%	0.25%	0.92%
<i>Montipora</i> sp.	0.83%	0.67%	0.50%	0.67%	4.50%	3.50%	0.67%	2.89%	0.75%	2.58%	2.00%
<i>Mycedium</i> sp.	-	-	-	-	-	0.83%	-	0.28%	-	-	0.42%
<i>Oxypora</i> sp.	-	0.17%	-	-	-	-	0.06%	-	-	0.08%	-
<i>Pachyseris</i> sp.	-	0.50%	0.67%	0.17%	0.67%	0.67%	0.39%	0.50%	0.08%	0.58%	0.67%
<i>Pavona</i> sp.	0.17%	1.17%	1.00%	0.17%	0.33%	0.50%	0.78%	0.33%	0.17%	0.75%	0.75%
<i>Pectinia</i> sp.	-	-	-	-	0.33%	-	-	0.11%	-	0.17%	-
<i>Plerogyra</i> sp.	-	-	-	-	-	0.17%	-	0.06%	-	-	0.08%
<i>Plesiastrea</i> sp.	-	-	-	0.17%	-	0.17%	-	0.11%	0.08%	-	0.08%
<i>Pocillopora</i> sp.	3.17%	3.33%	0.67%	1.00%	1.00%	0.67%	2.39%	0.89%	2.08%	2.17%	0.67%
<i>Porites</i> sp.	8.17%	6.33%	3.33%	13.50%	14.67%	6.67%	5.94%	11.61%	10.83%	10.50%	5.00%
<i>Psammocora</i> sp.	-	0.17%	0.17%	-	-	-	0.11%	-	-	0.08%	0.08%
<i>Seriatopora</i> sp.	-	-	-	0.17%	0.17%	-	-	0.11%	0.08%	0.08%	-
<i>Stylophora</i> sp.	1.17%	0.67%	0.50%	0.33%	0.67%	-	0.78%	0.33%	0.75%	0.67%	0.25%
<i>Symphyllia</i> sp.	-	0.17%	0.17%	-	-	-	0.11%	-	-	0.08%	0.08%
<i>Trachyphyllia</i> sp.	-	-	-	-	-	0.17%	-	0.06%	-	-	0.08%
<i>Tubastraea</i> sp.	-	-	-	0.17%	-	-	-	0.06%	0.08%	-	-
<i>Turbinaria</i> sp.	-	-	0.33%	-	0.17%	1.00%	0.11%	0.39%	-	0.08%	0.67%
<b>Tutupan total</b>	16.17%	18.00%	17.83%	19.17%	29.50%	24.50%	17.33%	24.39%	17.67%	23.75%	21.17%
<b>Total genera</b>	9	19	24	15	17	27	25	31	16	24	32



Lampiran 4. Hasil uji ANOVA dua arah struktur komunitas ikan kepe-kepe. Menguji pengaruh Lokasi (SAM dan PK), Zona (*flat*, *crest* dan *slope*) dan interaksi (Lokasi\*Zona). Hasil yang signifikan dicetak dengan huruf tebal (Bold). Total transek pengamatan N = 60.

Variabel komunitas ikan kepe-kepe	Interaksi	Pengaruh Utama	
	Lokasi * Zona ( <i>P</i> )	Lokasi ( <i>P</i> )	Zona ( <i>P</i> )
Total kelimpahan	0,1392	<b>&lt;0,0001</b>	0,6538
Total spesies	0,0667	0,0896	0,2424
H' (Shannon-Wiener <i>diversity index</i> )	<b>0,0432</b>	0,9559	0,2553

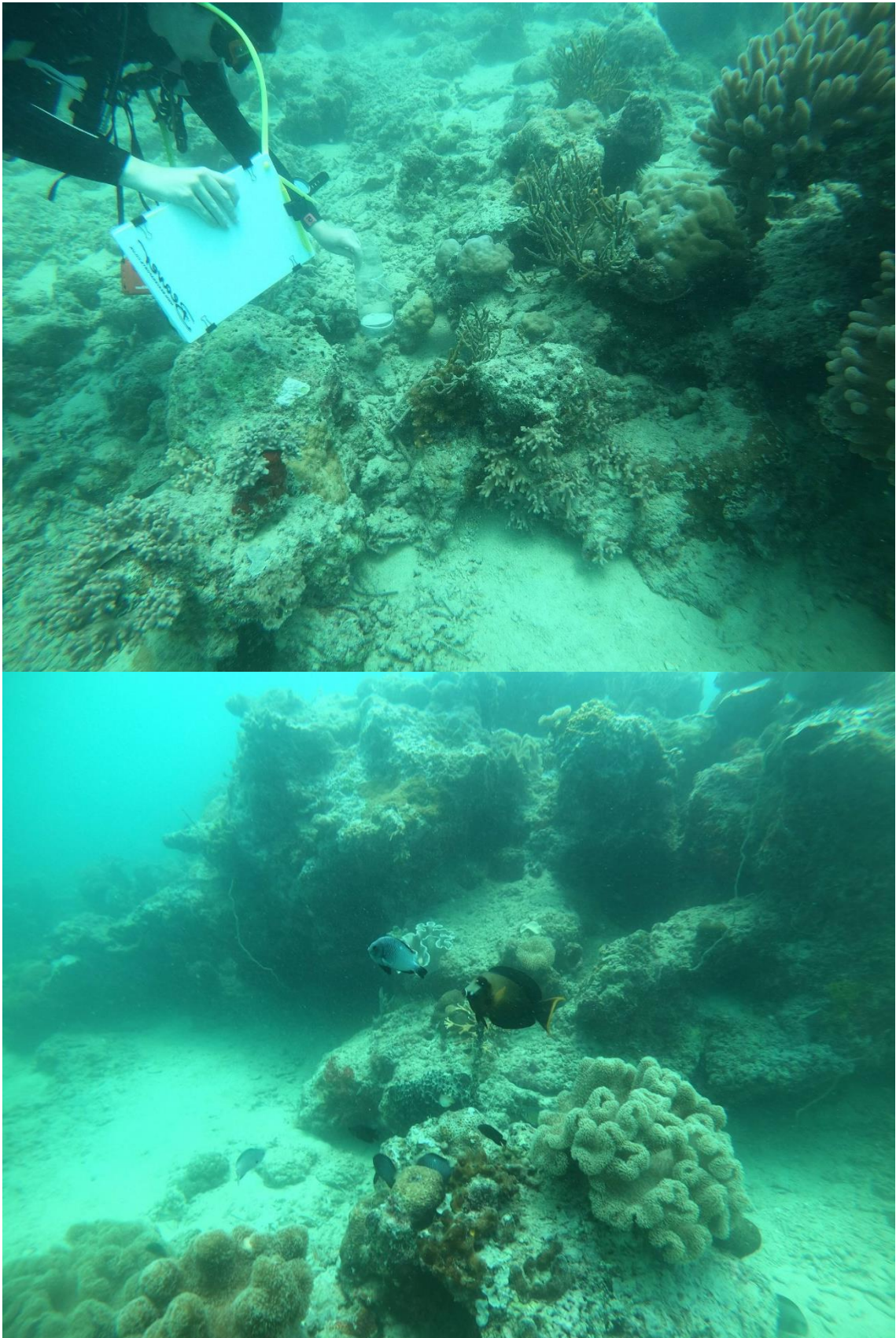
Lampiran 5. Hasil uji *post-hoc* Tukey nilai H' komunitas karang keras berdasarkan Zona pada masing-masing Lokasi. Hasil yang signifikan dicetak dengan huruf tebal (Bold). Total transek pengamatan N = 60.

Perbandingan stasiun (a vs. b)	<i>P</i>	Mean a	Mean b
SAM			
Flat vs. Crest	<b>0.0465</b>	1.59	1.98
Flat vs. Slope	0.9848	1.59	1.62
Crest vs. Slope	0.0682	1.98	1.62
PK			
Flat vs. Crest	0.4668	1.85	1.67
Flat vs. Slope	0.4142	1.85	1.65
Crest vs. Slope	0.9954	1.67	1.65

Lampiran 6. Kelimpahan ikan Kepe-kepe

<b>Spesies</b>	<b>SAMFlat</b>	<b>SAMCrest</b>	<b>SAMSlope</b>	<b>PKFlat</b>	<b>PKCrest</b>	<b>PKSlope</b>	<b>SAM</b>	<b>PK</b>	<b>Flat</b>	<b>Crest</b>	<b>Slope</b>	<b>Total</b>
<i>Forcipiger flavissimus</i>	-	1.1	0.2	6.4	10.4	11.9	0.43	9.57	3.2	5.75	6.05	30
<i>Chaetodon lunulatus</i>	2.7	2.5	1.5	8.7	5.2	3.4	2.23	5.77	5.7	3.85	2.45	24
<i>Chaetodon kleinii</i>	0.8	3.8	2.5	3.3	3.6	1.9	2.37	2.93	2.05	3.7	2.2	15.9
<i>Chaetodon melannotus</i>	0.9	0.3	-	6.3	2	1.2	0.4	3.17	3.6	1.15	0.6	10.70
<i>Chaetodon vagabundus</i>	2.2	1.3	0.9	2.2	0.4	0.3	1.47	0.97	2.2	0.85	0.6	7.30
<i>Chaetodon baronessa</i>	3.4	1.2	1	1	0.1	0.3	1.87	0.47	2.2	0.65	0.65	7.00
<i>Chaetodon rafflessii</i>	0.7	1	0.3	2.2	0.5	0.4	0.67	1.03	1.45	0.75	0.35	5.1
<i>Chaetodon ulietensis</i>	0.3	1	0.6	1.1	0.9	1.2	0.63	1.07	0.7	0.95	0.9	5.1
<i>Heniochus varius</i>	0.2	1.8	0.3	0.7	0.7	1	0.77	0.8	0.45	1.25	0.65	4.70
<i>Chaetodon auriga</i>	-	0.1	0.6	0.2	1.1	0.6	0.23	0.63	0.1	0.6	0.6	2.60
<i>Heniochus pleurotaenia</i>	0.3	0.6	0.5	0.3	0.6	0.3	0.47	0.4	0.3	0.6	0.4	2.60
<i>Chaetodon adiergastos</i>	0.2	0.5	1.1	0.1	-	-	0.6	0.03	0.15	0.25	0.55	1.90
<i>Chaetodon lunula</i>	0.1	0.5	0.6	-	-	0.7	0.4	0.23	0.05	0.25	0.65	1.90
<i>Heniochus chrysostomus</i>	-	0.3	0.9	0.4	0.1	0.2	0.4	0.23	0.2	0.2	0.55	1.90
<i>Hemitaurichthys polylepis</i>	-	-	1.2	0.2	0.4	0.1	0.4	0.23	0.1	0.2	0.65	1.90
<i>Chaetodon punctatofasciatus</i>	0.2	0.2	-	-	0.5	0.9	0.13	0.47	0.1	0.35	0.45	1.8
<i>Chaetodon ornatissimus</i>	-	0.1	-	0.1	0.5	1	0.03	0.53	0.05	0.3	0.5	1.70
<i>Heniochus singularis</i>	0.2	0.9	0.1	-	0.2	0.2	0.4	0.13	0.1	0.55	0.15	1.60
<i>Heniochus acuminatus</i>	-	0.4	0.9	-	0.1	-	0.43	0.03	-	0.25	0.45	1.40
<i>Chaetodon unimaculatus</i>	-	0.2	-	0.5	0.2	0.4	0.07	0.37	0.25	0.2	0.2	1.30
<i>Chaetodon xanthurus</i>	-	0.4	0.7	-	-	-	0.37	-	-	0.2	0.35	1.10
<i>Chaetodon citrinellus</i>	0.9	-	-	0.1	-	-	0.3	0.03	0.5	-	-	1.00
<i>Chaetodon ocellicaudus</i>	0.2	-	0.1	0.7	-	-	0.1	0.23	0.45	-	0.05	1.00
<i>Chaetodon meyeri</i>	-	-	-	0.2	-	0.7	-	0.3	0.1	-	0.35	0.9
<i>Chaetodon octofasciatus</i>	-	-	-	-	0.2	0.6	-	0.27	-	0.1	0.3	0.80
<i>Chaetodon oxycephalus</i>	-	0.1	-	0.1	0.2	0.2	0.03	0.17	0.05	0.15	0.1	0.6
<i>Chaetodon ephippium</i>	0.1	0.2	-	0.2	-	-	0.1	0.07	0.15	0.1	-	0.50
<i>Chaetodon trifascialis</i>	0.1	-	-	0.3	-	-	0.03	0.1	0.2	-	-	0.40
<i>Chaetodon mertensii</i>	-	-	0.2	0.1	-	-	0.07	0.03	0.05	-	0.1	0.3
<i>Chaetodon speculum</i>	-	0.1	-	-	0.1	-	0.03	0.03	-	0.1	-	0.20
<i>Chaetodon lineolatus</i>	-	-	-	-	0.1	-	-	0.03	-	0.05	-	0.10
<b>Kelimpahan total</b>	<b>13.5</b>	<b>18.6</b>	<b>14.2</b>	<b>35.4</b>	<b>28.1</b>	<b>27.5</b>	<b>15.43</b>	<b>30.33</b>	<b>24.45</b>	<b>23.35</b>	<b>20.85</b>	
<b>Total spesies</b>	<b>18</b>	<b>24</b>	<b>20</b>	<b>23</b>	<b>22</b>	<b>21</b>	<b>28</b>	<b>30</b>	<b>26</b>	<b>26</b>	<b>26</b>	

Lampiran 7. Terumbu karang Sampela



Lampiran 8. Terumbu karang Pak Kasim

