

DAFTAR PUSTAKA

1. Bratawidjaja, K.G.2006. *Imunologi Dasar*. ed.7. Balai Penerbit Fakultas Kedokteran Universitas Indonesia. Jakarta. Hal. 3
2. Dajue lie, Hans-Henning. 1996. *Safflower. Catharmus tinctorius L.* International Plant Genetic Resources Institute. Germany. Hal.8
3. Usmar, Syukur R, Abdullah N, dan Tayeb R. 2010. *Uji Aktivitas Immunomodulator Kasumba Turate (Carthamus tinctorius L.) sebagai Upaya Pembuatan Sediaan Terstandar Menuju Prototipe Skala Industri Kecil*. Majalah Farmasi dan Farmakologi Vol.14. No.1 Maret 2010. Fakultas Farmasi Universitas Hasanuddin. Makassar. Hal.17-20.
4. Umar, S. 2006. Efek Ekstrak Etanol Bunga Kasumba Turate (Carthamus tinctorius L.) terhadap Aktivitas Immunoglobulin G (IgG) dan Peningkatan Bobot Limpa pada Mencit Jantan (Mus musculus). *Skripsi Fakultas Farmasi Universitas Hasanuddin*. Makassar. Hal. 37
5. Katannun,M. 2007. Uji Efek Ekstrak Air Mahkota Bunga Kasumba Turate (Carthamus tinctorius Linn.) Terhadap Peningkatan Aktivitas Fagositosis Sistem Fagosit Mononuklear Mencit (Mus musculus) Dengan Metode Carbon Clearance. *Skripsi Fakultas Farmasi Universitas Hasanuddin*. Makassar. Hal. 45
6. Alfianti. 2011. Pengaruh Natrium Alginat terhadap Kestabilan Fisik Sirup Kasumba Turate (Carthamus tinctorius L.). *Skripsi. Fakultas Farmasi Universitas Hasanuddin*. Makassar. Hal. 38
7. Dewoto, R.H. 2007. *Pengembangan Obat Tradisional Indonesia Menjadi Fitofarmaka*. Majalah Kedokteran Indonesia, Vol. 57 No.7, Juli 2007. Departemen Farmakologi, Fakultas Kedokteran Universitas Indonesia, Jakarta. Hal.208
8. Fitriah, R. 2013. Uji Aktivitas Fagositosis Sediaan Sirup Kasumba Turate (Carthamus Tinctorius Linn.) Sebagai Immunostimulan Pada Mencit Jantan (Mus Musculus). *Skripsi Fakultas Farmasi Universitas Hasanuddin*. Makassar. Hal. 31
9. Pusat Riset Obat dan Makanan. 2011. *Pedoman Uji Toksisitas Nonklinik secara In Vivo*. Badan Pengawasan Obat dan Makanan Republik Indonesia. Jakarta.
10. Aspriamijaya, C. 2013. Uji Toksisitas Akut Sediaan Cair Kasumba Turate (Carthamus Tinctorius L.) Sebagai Prototipe Herbal Terstandar

Imunomodulator Pada Mencit (Mus Musculus). *Skripsi Fakultas Farmasi Universitas Hasanuddin*. Makassar. Hal. 27

11. Van der Vosen, H.A.M., Umali, B.E. 2001. "*Plant Resources of South-East Asia: Vegetables oils and fats*. Volume 14. Backhuys Publishers. Leiden. Hal. 70-2.
12. Sastroamidjojo, A.S.1997. *Obat Asli Indonesia*. Penerbit Dian Rakyat. Jakarta.
13. Wiedosari, E. 2007. *Peranan Imunomodulator Alami (Aloe Vera) Dalam Sistem Imunitas Seluler Dan Humoral*. Wartazoa Vol. 17 No. 4 Th. 2007. Bogor. Available as PDF file Hal. 1
14. Lu FC and Kacew S. 2003. *Lu's Basic Toxicology; Fundamental, Target Organs, and Risk Assessment*. 4th ed. London and New York. Available as PDF file. Hal. 3-4, 14, 74, 82, 201
15. Agus G.W.I.M., Niruri R. 2007. *Buku Ajar Toksikologi FA 324620*. Jurusan Farmasi Fakultas Matematika dan Ilmu Pengetahuan Alam. Universitas Udayana. Hal. 6, 41-2
16. Ganiswarna SG. 2007. *Farmakologi dan Terapi*. ed. 5. Bagian Farmakologi FK-UI. Jakarta. Hal 823-6
17. Hayes AW. 1983. *Principles and Methods of Toxicology*. Raven Press. New York. Hal. 4
18. Klaassen CD., Watkins, JB., Casarett & Doull's Essentials of Toxicology 1st edition . Mc.Graww-Hills Access Pharmacy
19. Loomis TA. *Toksikologi Dasar*. Ed. 3. Terjemahan oleh Imono Argo Donatus. Yogyakarta; Laboratorium Farmakologi dan Toksikologi Fakultas Farmasi Universitas Gadjah Mada; hal 21, 225-6, 233-8.
20. Hodgson E. 2010. *A Textbook of Modern Toxicology 4rd ed*. A. Jhon Wiley & Sons, Inc. Publication. Canada. Hal. 264, 364-5
21. Anand S, Singh S, Nahar S.U,et al. 2009. *Cardiac abnormalities in acute organophosphate poisoning*. *Journal poisoning* 47. Department of Internal Medicine, Postgraduate Institute of Medical Education and Research, Chandigarh, India. From Pubmed.gov Maret 2009. p. 230-5
22. Onder A, Kapan M, Gümüş M, et.al. 2012. *The protective effects of curcumin on intestine and remote organs against mesenteric ischemia/reperfusion injury*. Dicle University Faculty of Medicine,

General Surgery, Diyarbakır, Turkey. From Pubmed.gov. April 2012. p. 141-7

23. Krishnamoorthy P, Vairamuthu S, Balachandran C, et.al. 2007. *Pathology of Lymphoid Organs in Chlorpyrifos and T-2 Toxin Fed Broiler Chicken*. International Journal of Poultry Science Vol.6. India. p.71-6
24. Tso, P. *The Physiology of Liver chapter 28. Part VII gastrointestinal physiology*. Available as PDF diakses tanggal 21 april 2013 from <http://faculty.ksu.edu>. p. 514
25. Tim Kerja Kelompok Diskusi Medical Bedah. 2009. *Penatalaksanaan Serosis Hepatis Berdasarkan Evidance Based Nursing (Ebn)*. Universitas Indonesia. Hal. 2-5
26. Anonim. Anatomi Ginjal dan Ureter. , diakses tanggal 18 Septemberr 2013. Available as PDF from <http://lutfie.mhs.unimus.ac.id/.../Anatomi-ginjal-dan-ureter>
27. Geneser, F. 1994. *Buku Teks Histologi Jilid 2*. Terjemahan oleh Arifin Gunawijaya. Binarupa aksara. Hal. 157
28. Ganong, W.F. 2008. *Buku Ajar Fisiologi Kedokteran Edisi 22*. Terjemahan oleh Brahm U.Pendit. Jakarta: Penerbit Buku Kedokteran EGC. Hal. 551
29. Junqueira LC, Carneiro J, dan Kelley RO. 1997. *Histologi Dasar*. Penerbit Buku Kedokteran EGC. Jakarta. hal. 294-9, 371-2, 385.
30. Putz,P., R. Pabst. *Atlas Anatomi Manusia Sobotta, ed. 22, jilid 2*. Penerbit EGC. Jakarta
31. Sherwood, L. 2001. *Fisiologi Manusia : Dari Sel ke Sistem*. EGC. Jakarta. Hal.551
32. Klaassen CD., Watkins, JB., Casarett & Doull's Toxicology The Basic Science of Poisons 7th edition. Mc.Graww-Hills

LAMPIRAN I

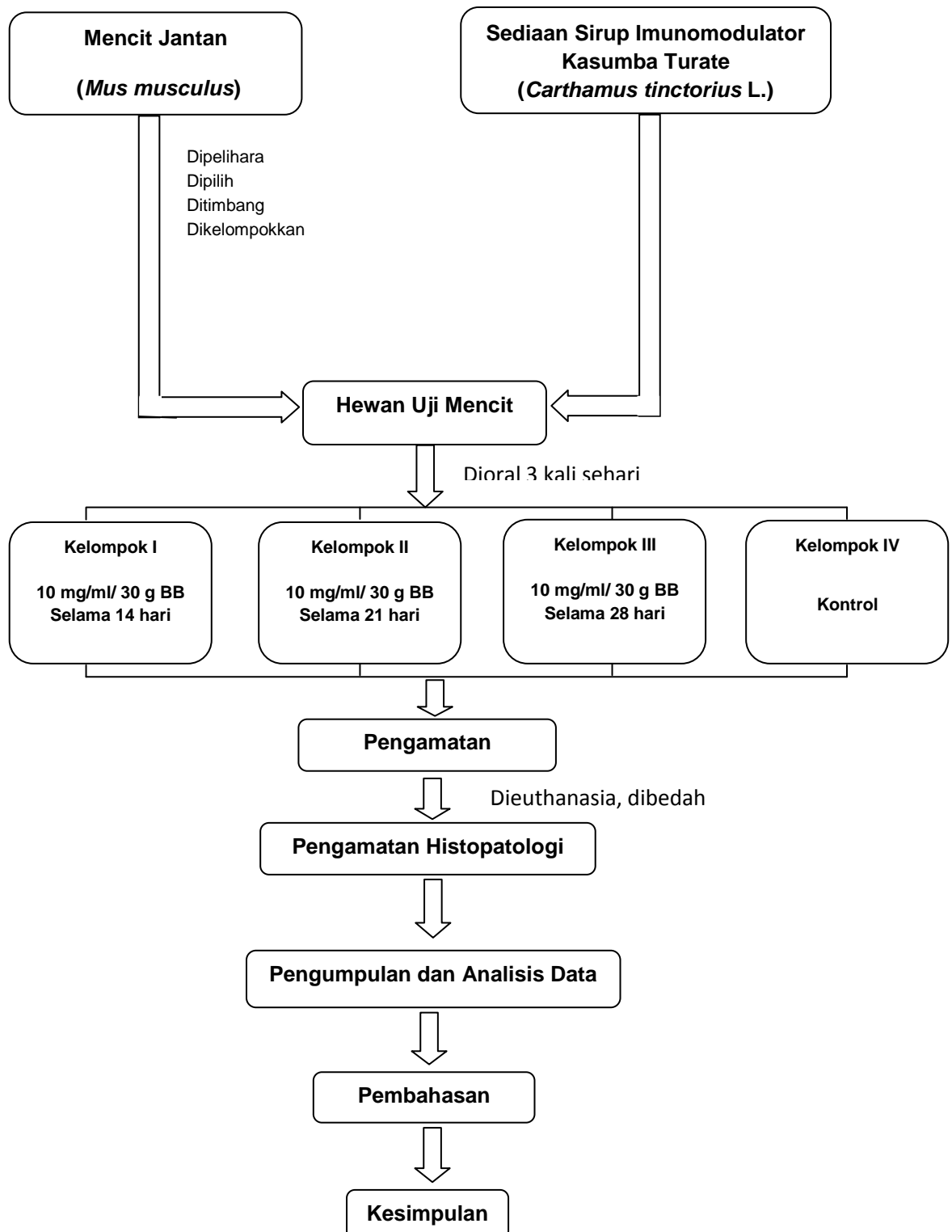
Tabel 3. Komposisi sediaan sirup dari liofilisat ekstrak mahkota bunga kasumba turate (*Carthamus tinctorius* L.)

| No. | Nama Bahan | Komposisi (% b/v) |
|-----|---|-------------------|
| 1. | Liofilisat Kasumba Turate (<i>Carthamus tinctorius</i> L.) | 1,0 |
| 2. | Sirupus Simpleks | 25,0 |
| 3. | Natrium Alginat | 0,1 |
| 4. | Sari Markisa | 5,0 |
| 5. | Natrium Benzoat | 0,1 |
| 6. | Air Suling ad | 100,0 |

Sumber: Alfianti. 2011. Pengaruh Natrium Alginat terhadap Kestabilan Fisik Sirup Kasumba Turate (*Carthamus tinctorius* L.)

LAMPIRAN II

Skema Kerja Uji Toksisitas Subkronik Sediaan Sirup Imunomodulator Kasumba Turate (*Carthamus tinctorius* L.) pada mencit (*Mus musculus*).



LAMPIRAN III

Tabel 4. Data Gejala-gejala Toksik Setelah Pemberian Sirup

| Kelompok | Replikasi | Parameter Yang Diamati | | | | | | | | | | | | | | | | | | | | | | | | | | | |
|-------------------|-----------|----------------------------|---|---|---|----|---|---|---|---|---|----|----|----|----|----|----|----|----|----|----|----|----|----|----|----|----|----|----|
| | | Perubahan warna kulit/bulu | | | | | | | | | | | | | | | | | | | | | | | | | | | |
| | | Hari | 1 | 2 | 3 | 4 | 5 | 6 | 7 | 8 | 9 | 10 | 11 | 12 | 13 | 14 | 15 | 16 | 17 | 18 | 19 | 20 | 21 | 22 | 23 | 24 | 25 | 26 | 27 |
| I Hari Ke-14 | 1 | - | - | - | - | - | - | - | - | - | - | - | - | - | - | - | - | - | - | - | - | - | - | - | - | - | - | - | - |
| | 2 | - | - | - | - | - | - | - | - | - | - | - | - | - | - | - | - | - | - | - | - | - | - | - | - | - | - | - | - |
| | 3 | - | - | - | - | - | - | - | - | - | - | - | - | - | - | - | - | - | - | - | - | - | - | - | - | - | - | - | - |
| | 4 | - | - | - | - | *) | - | - | - | - | - | - | - | - | - | - | - | - | - | - | - | - | - | - | - | - | - | - | - |
| | 5 | - | - | - | - | - | - | - | - | - | - | - | - | - | - | - | - | - | - | - | - | - | - | - | - | - | - | - | - |
| II Hari Ke-21 | 1 | - | - | - | - | - | - | - | - | - | - | - | - | - | - | - | - | - | - | - | - | - | - | - | - | - | - | - | - |
| | 2 | - | - | - | - | - | - | - | - | - | - | - | - | - | - | - | - | - | - | - | - | - | - | - | - | - | - | - | - |
| | 3 | - | - | - | - | - | - | - | - | - | - | - | - | - | - | - | - | - | - | - | - | - | - | - | - | - | - | - | - |
| | 4 | - | - | - | - | - | - | - | - | - | - | - | - | - | - | - | - | - | - | - | - | - | - | - | - | - | - | - | - |
| | 5 | - | - | - | - | - | - | - | - | - | - | - | - | - | - | - | - | - | - | - | - | - | - | - | - | - | - | - | - |
| III Hari Ke-28 | 1 | - | - | - | - | - | - | - | - | - | - | - | - | - | - | - | - | - | - | - | - | - | - | - | - | - | - | - | - |
| | 2 | - | - | - | - | - | - | - | - | - | - | - | - | - | - | - | - | - | *) | - | - | - | - | - | - | - | - | - | - |
| | 3 | - | - | - | - | - | - | - | - | - | - | - | - | - | - | - | - | - | - | - | - | - | - | - | - | - | - | - | - |
| | 4 | - | - | - | - | - | - | - | - | - | - | - | - | - | - | - | - | - | - | - | - | - | - | - | - | - | - | - | - |
| | 5 | - | - | - | - | - | - | - | - | - | - | - | - | - | - | - | - | - | - | - | - | - | - | - | - | - | - | - | - |
| IV (kontrol) | | | | | | | | | | | | | | | | | | | | | | | | | | | | | |

Ket : (-) = tidak ada gejala, (+)= ada gejala, *) = mencit mati

Tabel 4. Data Gejala-gejala Toksik Setelah Pemberian Sirup (lanjutan)

| Klp | Replikasi | Parameter Yang Diamati | | | | | | | | | | | | | | | | | | | | | | | | | | | |
|-------------------|-----------|-------------------------------|---|---|---|----|---|---|---|---|---|----|----|----|----|----|----|----|----|----|----|----|----|----|----|----|----|----|----|
| | | Perubahan Membran Mukosa Mata | | | | | | | | | | | | | | | | | | | | | | | | | | | |
| | | Hari | 1 | 2 | 3 | 4 | 5 | 6 | 7 | 8 | 9 | 10 | 11 | 12 | 13 | 14 | 15 | 16 | 17 | 18 | 19 | 20 | 21 | 22 | 23 | 24 | 25 | 26 | 27 |
| I Hari Ke-14 | 1 | - | - | - | - | - | - | - | - | - | - | - | - | - | - | - | - | - | - | - | - | - | - | - | - | - | - | - | - |
| | 2 | - | - | - | - | - | - | - | - | - | - | - | - | - | - | - | - | - | - | - | - | - | - | - | - | - | - | - | - |
| | 3 | - | - | - | - | - | - | - | - | - | - | - | - | - | - | - | - | - | - | - | - | - | - | - | - | - | - | - | - |
| | 4 | - | - | - | - | *) | - | - | - | - | - | - | - | - | - | - | - | - | - | - | - | - | - | - | - | - | - | - | - |
| | 5 | - | - | - | - | - | - | - | - | - | - | - | - | - | - | - | - | - | - | - | - | - | - | - | - | - | - | - | - |
| II Hari Ke-21 | 1 | - | - | - | - | - | - | - | - | - | - | - | - | - | - | - | - | - | - | - | - | - | - | - | - | - | - | - | - |
| | 2 | - | - | - | - | - | - | - | - | - | - | - | - | - | - | - | - | - | - | - | - | - | - | - | - | - | - | - | - |
| | 3 | - | - | - | - | - | - | - | - | - | - | - | - | - | - | - | - | - | - | - | - | - | - | - | - | - | - | - | - |
| | 4 | - | - | - | - | - | - | - | - | - | - | - | - | - | - | - | - | - | - | - | - | - | - | - | - | - | - | - | - |
| | 5 | - | - | - | - | - | - | - | - | - | - | - | - | - | - | - | - | - | - | - | - | - | - | - | - | - | - | - | - |
| III Hari Ke-28 | 1 | - | - | - | - | - | - | - | - | - | - | - | - | - | - | - | - | - | - | - | - | - | - | - | - | - | - | - | - |
| | 2 | - | - | - | - | - | - | - | - | - | - | - | - | - | - | - | - | - | - | - | - | - | - | - | - | - | - | - | - |
| | 3 | - | - | - | - | - | - | - | - | - | - | - | - | - | - | - | - | - | - | - | - | - | - | - | - | - | - | - | - |
| | 4 | - | - | - | - | - | - | - | - | - | - | - | - | - | - | - | - | - | - | - | - | - | - | - | - | - | - | - | - |
| | 5 | - | - | - | - | - | - | - | - | - | - | - | - | - | - | - | - | - | - | - | - | - | - | - | - | - | - | - | - |
| IV (kontrol) | | | | | | | | | | | | | | | | | | | | | | | | | | | | | |

Ket : (-) = tidak ada gejala, (+)= ada gejala, *) = mencit mati

Tabel 4. Data Gejala-gejala Toksik Setelah Pemberian Sirup (lanjutan)

| Klp | Replikasi | Parameter Yang Diamati | | | | | | | | | | | | | | | | | | | | | | | | | | | | |
|-------------------|-----------|------------------------|---|---|---|----|---|---|---|---|---|----|----|----|----|----|----|----|----|----|----|----|----|----|----|----|----|----|----|----|
| | | Sekresi (salivasi) | | | | | | | | | | | | | | | | | | | | | | | | | | | | |
| | | Hari | 1 | 2 | 3 | 4 | 5 | 6 | 7 | 8 | 9 | 10 | 11 | 12 | 13 | 14 | 15 | 16 | 17 | 18 | 19 | 20 | 21 | 22 | 23 | 24 | 25 | 26 | 27 | 28 |
| I Hari Ke-14 | 1 | - | - | - | - | - | - | - | - | - | - | - | - | - | - | - | - | - | - | - | - | - | - | - | - | - | - | - | - | |
| | 2 | - | - | - | - | - | - | - | - | - | - | - | - | - | - | - | - | - | - | - | - | - | - | - | - | - | - | - | - | |
| | 3 | - | - | - | - | - | - | - | - | - | - | - | - | - | - | - | - | - | - | - | - | - | - | - | - | - | - | - | - | |
| | 4 | - | - | - | - | *) | | | | | | | | | | | | | | | | | | | | | | | | |
| | 5 | - | - | - | - | - | - | - | - | - | - | - | - | - | - | - | - | - | - | - | - | - | - | - | - | - | - | - | - | |
| II Hari Ke-21 | 1 | - | - | - | - | - | - | - | - | - | - | - | - | - | - | - | - | - | - | - | - | - | - | - | - | - | - | - | - | |
| | 2 | - | - | - | - | - | - | - | - | - | - | - | - | - | - | - | - | - | - | - | - | - | - | - | - | - | - | - | - | |
| | 3 | - | - | - | - | - | - | - | - | - | - | - | - | - | - | - | - | - | + | + | - | - | - | - | - | - | - | - | - | |
| | 4 | - | - | - | - | - | - | - | - | - | - | - | - | - | - | - | - | - | - | - | - | - | - | - | - | - | - | - | - | |
| | 5 | - | - | - | - | - | - | - | - | - | - | - | - | - | - | - | - | - | - | - | - | - | - | - | - | - | - | - | - | |
| III Hari Ke-28 | 1 | - | - | - | - | - | - | - | - | - | - | - | - | - | - | - | - | - | - | - | - | - | + | - | - | - | - | - | - | |
| | 2 | - | - | - | - | - | - | - | - | - | - | - | - | - | - | - | - | - | *) | | | | | | | | | | | |
| | 3 | - | - | - | - | - | - | - | - | - | - | - | - | - | - | - | - | - | - | - | - | - | - | - | - | - | + | + | - | - |
| | 4 | - | - | - | - | - | - | - | - | - | - | - | - | - | - | - | - | - | - | - | - | - | - | - | - | - | - | - | - | - |
| | 5 | - | - | - | - | - | - | - | - | - | - | - | - | - | - | - | - | - | - | - | - | - | - | - | - | - | - | - | - | - |
| IV (kontrol) | | | | | | | | | | | | | | | | | | | | | | | | | | | | | | |

Ket : (-) = tidak ada gejala, (+)= ada gejala, *) = mencit mati

Tabel 4. Data Gejala-gejala Toksik Setelah Pemberian Sirup (lanjutan)

| Klp | Replikasi | Parameter Yang Diamati | | | | | | | | | | | | | | | | | | | | | | | | | | | |
|-------------------|-----------|------------------------|---|---|---|---|---|---|---|---|---|----|----|----|----|----|----|----|----|----|----|----|----|----|----|----|----|----|----|
| | | Ekskresi (diare) | | | | | | | | | | | | | | | | | | | | | | | | | | | |
| | | Hari | 1 | 2 | 3 | 4 | 5 | 6 | 7 | 8 | 9 | 10 | 11 | 12 | 13 | 14 | 15 | 16 | 17 | 18 | 19 | 20 | 21 | 22 | 23 | 24 | 25 | 26 | 27 |
| I Hari Ke-14 | 1 | - | - | - | - | - | + | + | + | - | - | + | + | - | + | | | | | | | | | | | | | | |
| | 2 | - | - | - | + | - | - | + | - | + | - | + | + | + | + | | | | | | | | | | | | | | |
| | 3 | - | - | - | + | - | + | - | + | + | + | - | - | + | + | | | | | | | | | | | | | | |
| | 4 | - | - | - | - | * | | | | | | | | | | | | | | | | | | | | | | | |
| | 5 | - | - | - | - | - | - | - | + | - | - | - | + | + | + | | | | | | | | | | | | | | |
| II Hari Ke-21 | 1 | - | - | + | + | - | - | + | - | + | + | + | - | - | - | - | + | - | - | + | + | + | | | | | | | |
| | 2 | - | - | + | + | + | - | - | - | - | - | + | + | + | + | + | + | + | - | + | + | + | | | | | | | |
| | 3 | - | - | - | - | - | - | + | - | - | - | + | + | + | + | - | + | + | + | + | - | - | - | | | | | | |
| | 4 | - | - | + | - | - | - | - | - | - | - | - | + | + | + | + | + | + | + | + | + | + | + | | | | | | |
| | 5 | - | - | + | + | - | - | + | + | - | - | - | + | + | + | + | + | + | + | + | + | + | + | | | | | | |
| III Hari Ke-28 | 1 | - | - | - | - | + | + | - | - | - | - | + | + | + | - | - | - | + | + | + | + | + | - | - | + | + | + | + | + |
| | 2 | - | - | + | + | - | - | - | - | - | - | - | + | + | + | + | + | * | | | | | | | | | | | |
| | 3 | - | - | - | - | - | - | + | + | + | - | - | - | - | - | - | + | + | + | - | - | - | + | + | + | + | + | + | + |
| | 4 | - | - | + | + | - | - | + | - | - | - | + | + | - | + | + | + | + | + | - | - | - | + | + | + | + | + | + | + |
| | 5 | - | - | - | - | + | + | - | - | - | - | + | + | + | - | - | + | + | - | + | + | + | + | + | + | + | + | + | + |
| IV (kontrol) | | | | | | | | | | | | | | | | | | | | | | | | | | | | | |

Ket : (-) = tidak ada gejala, (+)= ada gejala, *] = mencit mati

Tabel 4. Data Gejala-gejala Toksik Setelah Pemberian Sirup (lanjutan)

| Klp | Replikasi | Parameter Yang Diamati | | | | | | | | | | | | | | | | | | | | | | | | | | | |
|-------------------|-----------|---------------------------|---|---|---|----|---|---|---|---|---|----|----|----|----|----|----|----|----|----|----|----|----|----|----|----|----|----|----|
| | | Penurunan Aktivitas Gerak | | | | | | | | | | | | | | | | | | | | | | | | | | | |
| | | Hari | 1 | 2 | 3 | 4 | 5 | 6 | 7 | 8 | 9 | 10 | 11 | 12 | 13 | 14 | 15 | 16 | 17 | 18 | 19 | 20 | 21 | 22 | 23 | 24 | 25 | 26 | 27 |
| I Hari Ke-14 | 1 | - | + | - | + | + | + | + | - | - | + | + | + | + | - | | | | | | | | | | | | | | |
| | 2 | - | + | + | + | + | - | - | - | - | - | + | + | - | - | | | | | | | | | | | | | | |
| | 3 | - | + | + | + | + | + | + | - | - | - | - | - | - | - | | | | | | | | | | | | | | |
| | 4 | - | + | + | - | *) | | | | | | | | | | | | | | | | | | | | | | | |
| | 5 | - | - | - | - | - | - | + | + | + | + | + | + | - | - | - | | | | | | | | | | | | | |
| II Hari Ke-21 | 1 | - | - | - | - | - | + | + | + | + | + | + | + | - | - | + | + | + | + | + | - | + | | | | | | | |
| | 2 | - | - | + | + | - | + | + | + | + | + | - | - | - | - | + | + | + | + | - | + | + | | | | | | | |
| | 3 | - | - | - | - | - | + | + | - | - | + | + | + | - | + | + | - | + | + | - | - | - | | | | | | | |
| | 4 | - | - | + | - | - | + | + | - | - | - | - | - | + | - | - | + | + | - | - | + | + | | | | | | | |
| | 5 | - | - | - | + | - | + | + | + | + | + | + | - | - | - | + | + | + | - | + | + | + | | | | | | | |
| III Hari Ke-28 | 1 | - | - | - | + | + | - | - | + | - | - | - | - | - | + | + | + | + | + | + | + | - | - | - | + | + | + | + | + |
| | 2 | - | - | - | - | - | + | + | + | - | - | - | - | - | + | + | + | *) | | | | | | | | | | | |
| | 3 | - | - | - | - | - | + | + | - | - | + | + | + | - | + | + | + | + | + | + | + | - | + | + | - | - | - | - | - |
| | 4 | - | - | + | - | - | + | + | + | + | + | + | + | - | + | + | + | + | + | + | + | + | - | - | - | - | - | - | - |
| | 5 | - | + | + | - | - | - | - | + | + | - | - | - | - | - | + | + | + | + | + | - | - | + | + | + | + | + | + | + |
| IV (kontrol) | | | | | | | | | | | | | | | | | | | | | | | | | | | | | |

Ket : (-) = tidak ada gejala, (+)= ada gejala, *) = mencit mati

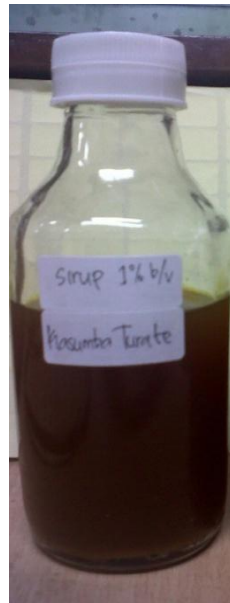
Tabel 4. Data Gejala-gejala Toksik Setelah Pemberian Sirup (lanjutan)

| Klp | Replikasi | Parameter Yang Diamati | | | | | | | | | | | | | | | | | | | | | | | | | | | |
|-------------------|-----------|------------------------|---|---|---|----|---|---|---|---|----|----|----|----|----|----|----|----|----|----|----|----|----|----|----|----|----|----|----|
| | | Kejang | | | | | | | | | | | | | | | | | | | | | | | | | | | |
| | Hari | 1 | 2 | 3 | 4 | 5 | 6 | 7 | 8 | 9 | 10 | 11 | 12 | 13 | 14 | 15 | 16 | 17 | 18 | 19 | 20 | 21 | 22 | 23 | 24 | 25 | 26 | 27 | 28 |
| I Hari Ke-14 | 1 | - | - | - | - | - | - | - | - | - | - | - | - | - | - | - | - | - | - | - | - | - | - | - | - | - | - | - | - |
| | 2 | - | - | - | - | - | - | - | - | - | - | - | - | - | - | - | - | - | - | - | - | - | - | - | - | - | - | - | - |
| | 3 | - | - | - | - | - | - | - | - | - | - | - | - | - | - | - | - | - | - | - | - | - | - | - | - | - | - | - | - |
| | 4 | - | - | - | - | *) | | | | | | | | | | | | | | | | | | | | | | | |
| | 5 | - | - | - | - | - | - | - | - | - | - | - | - | - | - | - | - | - | - | - | - | - | - | - | - | - | - | - | - |
| II Hari Ke-21 | 1 | - | - | - | - | - | - | - | - | - | - | - | - | - | - | - | - | - | - | - | - | - | - | - | - | - | - | - | - |
| | 2 | - | - | - | - | - | - | - | - | - | - | - | - | - | - | - | - | - | - | - | - | - | - | - | - | - | - | - | - |
| | 3 | - | - | - | - | - | - | - | - | - | - | - | - | - | - | - | - | - | - | - | - | - | - | - | - | - | - | - | - |
| | 4 | - | - | - | - | - | - | - | - | - | - | - | - | - | - | - | - | - | - | - | - | - | - | - | - | - | - | - | - |
| | 5 | - | - | - | - | - | - | - | - | - | - | - | - | - | - | - | - | - | - | - | - | - | - | - | - | - | - | - | - |
| III Hari Ke-28 | 1 | - | - | - | - | - | - | - | - | - | - | - | - | - | - | - | - | - | - | - | - | - | - | - | - | - | - | - | - |
| | 2 | - | - | - | - | - | - | - | - | - | - | - | - | - | - | - | - | - | *) | | | | | | | | | | |
| | 3 | - | - | - | - | - | - | - | - | - | - | - | - | - | - | - | - | - | - | - | - | - | - | - | - | - | - | - | - |
| | 4 | - | - | - | - | - | - | - | - | - | - | - | - | - | - | - | - | - | - | - | - | - | - | - | - | - | - | - | - |
| | 5 | - | - | - | - | - | - | - | - | - | - | - | - | - | - | - | - | - | - | - | - | - | - | - | - | - | - | - | - |
| IV (kontrol) | | | | | | | | | | | | | | | | | | | | | | | | | | | | | |

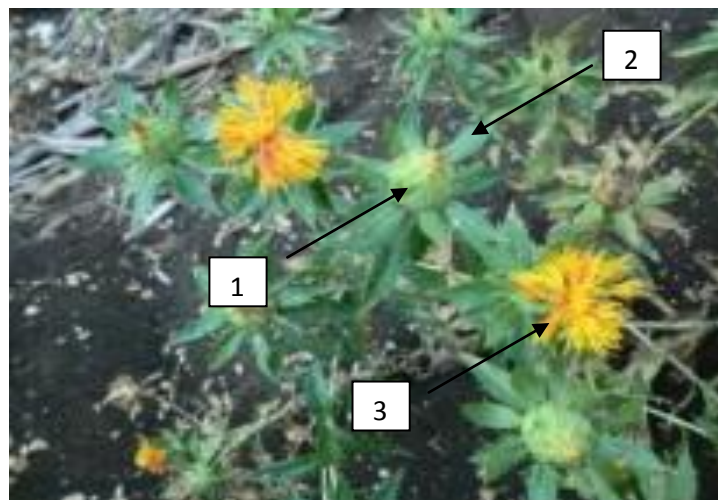
Ket : (-) = tidak ada gejala, (+)= ada gejala, *) = mencit mati

LAMPIRAN IV

GAMBAR

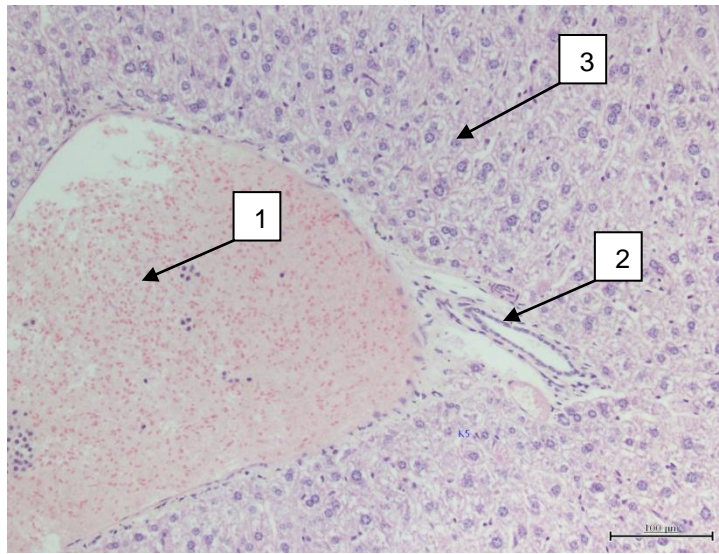


Gambar 6. Sediaan sirup imunomodulator kasumba turate



Gambar 7. Tanaman Kasumba Turate (*Carthamus tinctorius* Linn.)

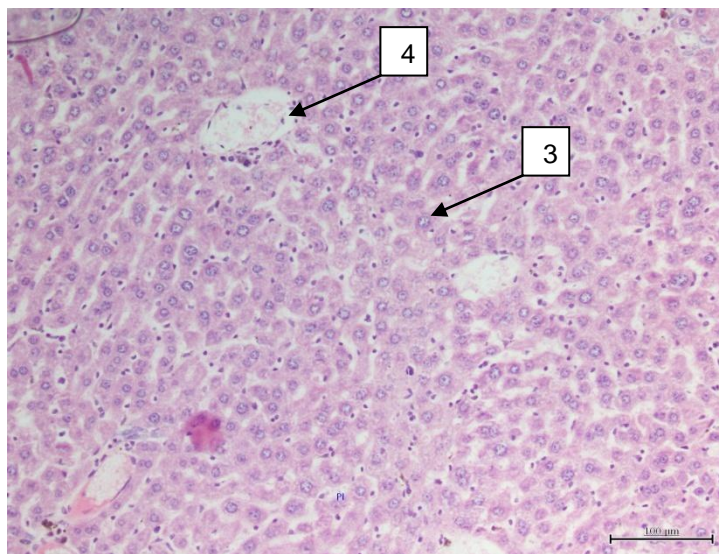
Keterangan :
1. Kuncup bunga
2. Kelopak bunga
3. Mahkota bunga



Keterangan histologi hati:

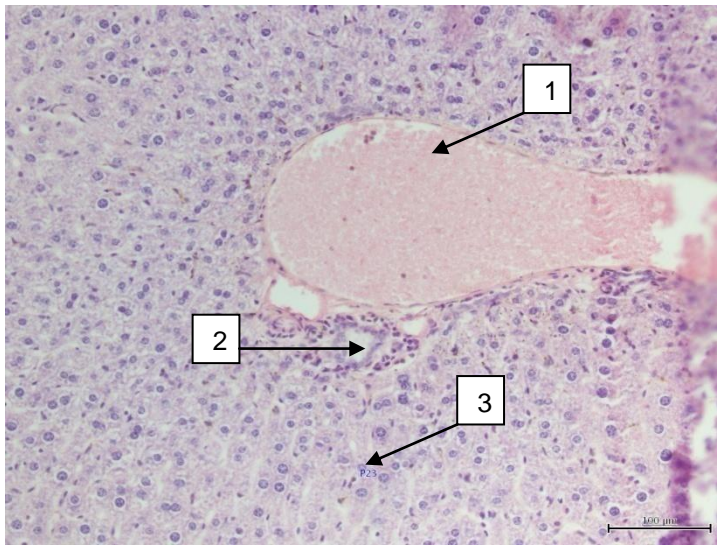
1. Vena centralis
2. Bil duct
3. Sel hepatosit
4. Pembuluh darah kapiler

Gambar 6. Histologi jaringan hati mencit tanpa pemberian sediaan sirup imunomodulator kasumba turate (kontrol) dengan pembesaran mikroskopik 200x.



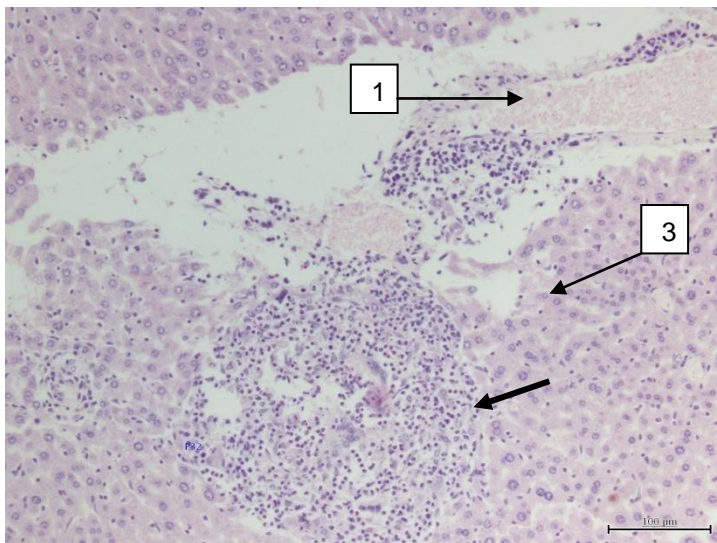
Skor : 0 (nul)
Sel hati normal

Gambar 7. Histologi jaringan hati mencit kelompok I diberikan sediaan sirup imunomodulator kasumba turate 1 ml/30 g BB mencit selama 14 hari dengan pembesaran mikroskopik 200x.



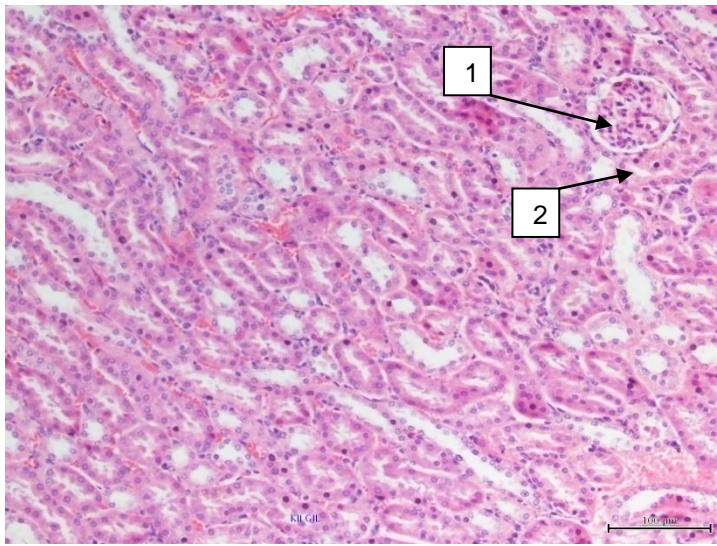
Skor : 0 (nol)
Sel hati normal

Gambar 8. Histologi jaringan hati mencit kelompok II diberikan sediaan sirup imunomodulator kasumba turate 1 ml/30 g BB mencit selama 21 hari dengan pembesaran mikroskopik 200x.



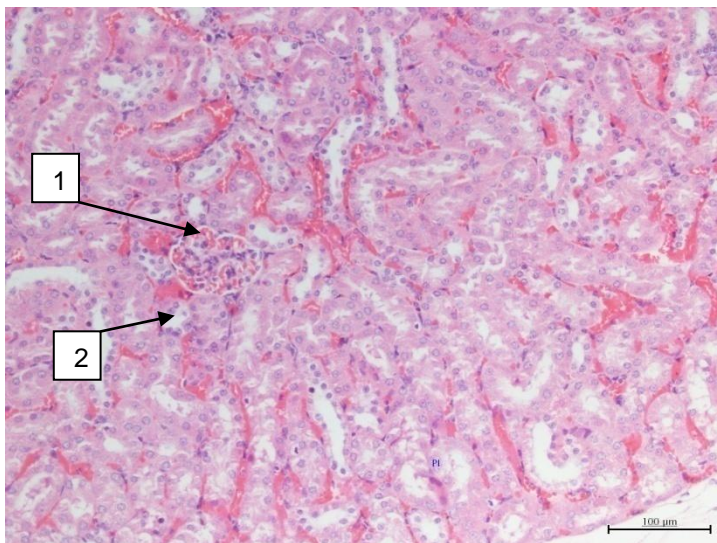
Skor : 2 (dua)
Nekrosis sel sekitar

Gambar 9. Histologi jaringan hati mencit kelompok III diberikan sediaan sirup imunomodulator kasumba turate 1 ml/30 g BB mencit selama 28 hari dengan pembesaran mikroskopik 200x.



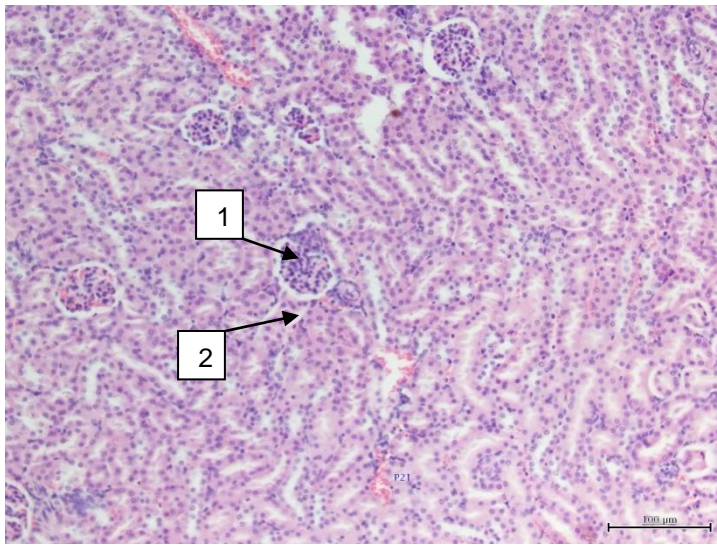
Keterangan histologi ginjal:
 1. Glomerulus
 2. Tubulus proksimal

Gambar 10. Histologi jaringan ginjal mencit tanpa pemberian sediaan sirup imunomodulator kasumba turate (kontrol) dengan pembesaran mikroskopik 200x.



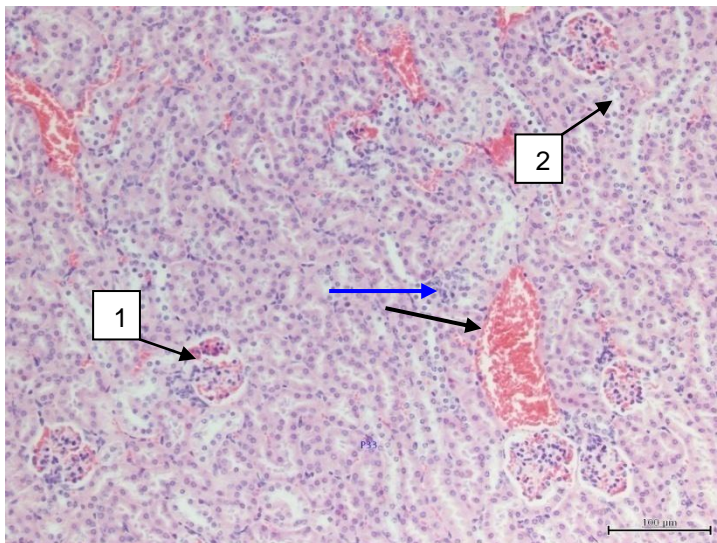
Skor : 0 (nol)
 Sel ginjal normal

Gambar 11. Histologi jaringan ginjal mencit kelompok I diberikan sediaan sirup imunomodulator 1 ml/30 g BB mencit selama 14 hari dengan pembesaran mikroskopik 200x.



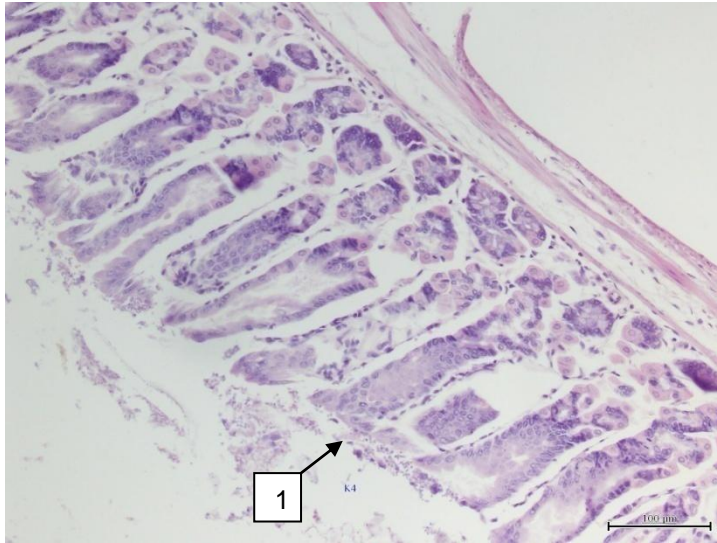
Skor : 0 (nol)
Sel ginjal normal

Gambar 12. Histologi jaringan ginjal mencit kelompok II diberikan sediaan sirup imunomodulator kasumba turate 1 ml/30 g BB mencit selama 21 hari dengan pembesaran mikroskopik 200x.



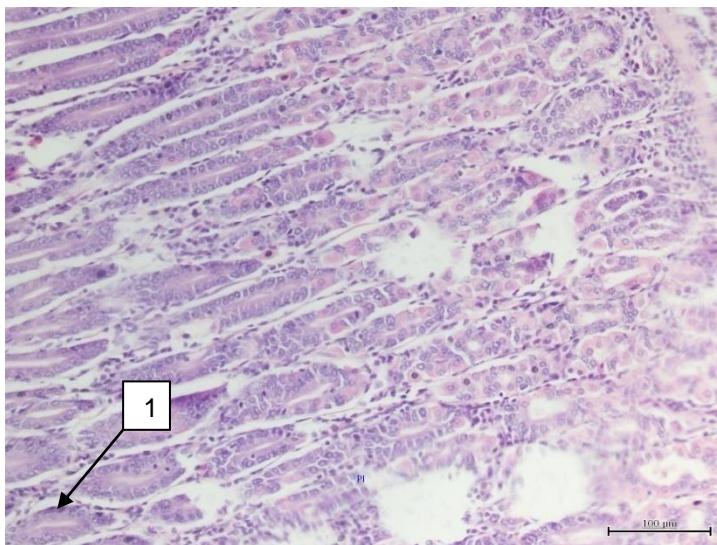
Skor : 1 (satu)
Hemoragi fokal (panah hitam), nekrosis (panah biru)

Gambar 13. Histologi jaringan ginjal mencit kelompok III diberikan sediaan sirup imunomodulator kasumba turate 1 ml/30 g BB mencit selama 28 hari dengan pembesaran mikroskopik 200x.



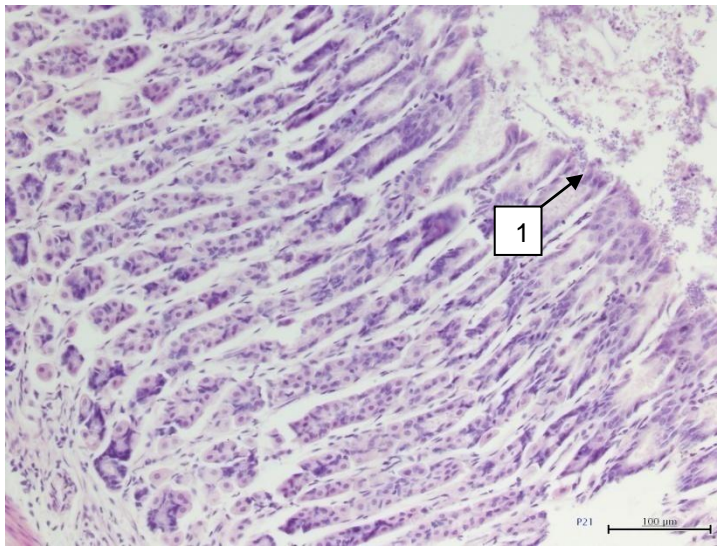
Keterangan histologi lambung:
1. Epitel mukosa

Gambar 14. Histologi jaringan lambung mencit tanpa pemberian sediaan sirup imunomodulator kasumba turate (kontrol) dengan pembesaran mikroskopik 200x.



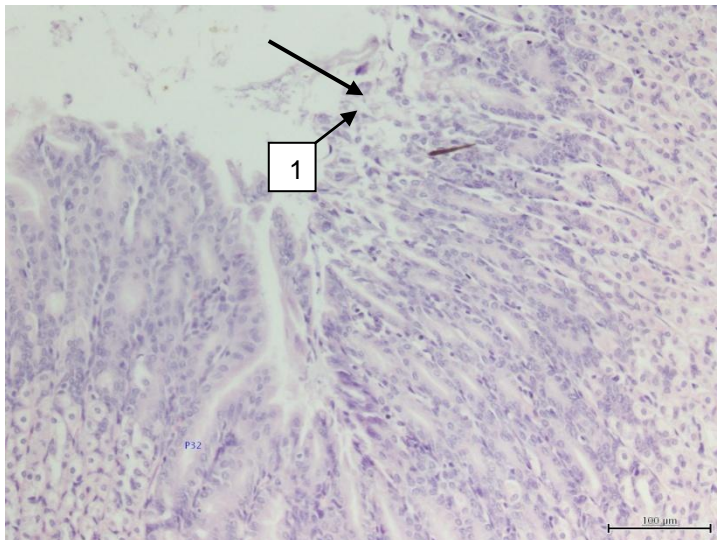
Skor : 0
Sel lambung normal

Gambar 15. Histologi jaringan lambung mencit kelompok I diberikan sediaan sirup imunomodulator kasumba turate 1 ml/30 g BB mencit selama 14 hari dengan pembesaran mikroskopik 200x.



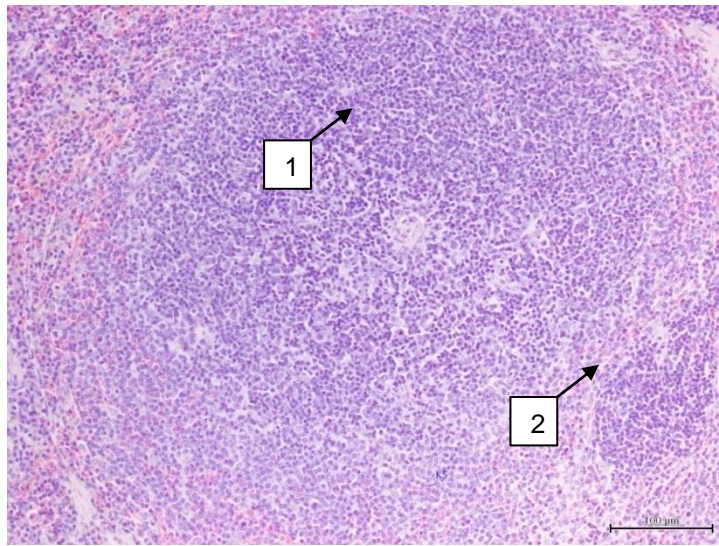
Skor : 0 (nol)
Sel lambung normal

Gambar 16. Histologi jaringan lambung mencit kelompok II diberikan sediaan sirup imunomodulator kasumba turate 1 ml/30 g BB mencit selama 21 hari dengan pembesaran mikroskopik 200x.



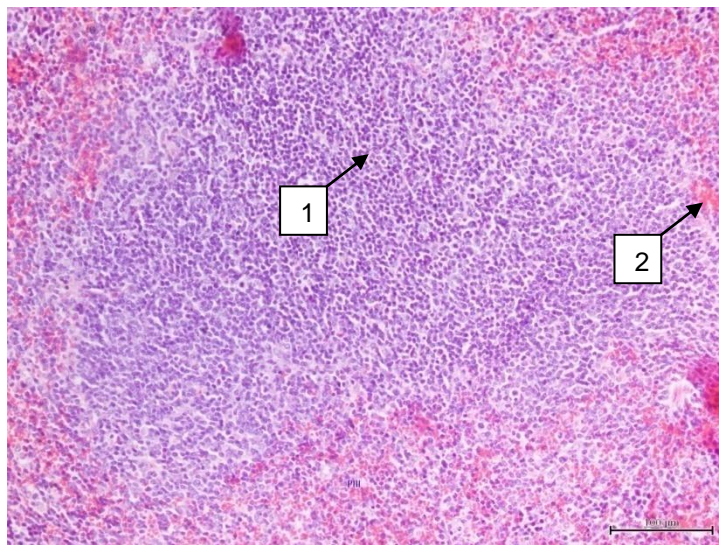
Skor : 1 (satu)
Kerusakan epitel mukosa

Gambar 17. Histologi jaringan lambung mencit kelompok III diberikan sediaan sirup imunomodulator kasumba turate 1 ml/30 g BB mencit selama 28 hari dengan pembesaran mikroskopik 200x.



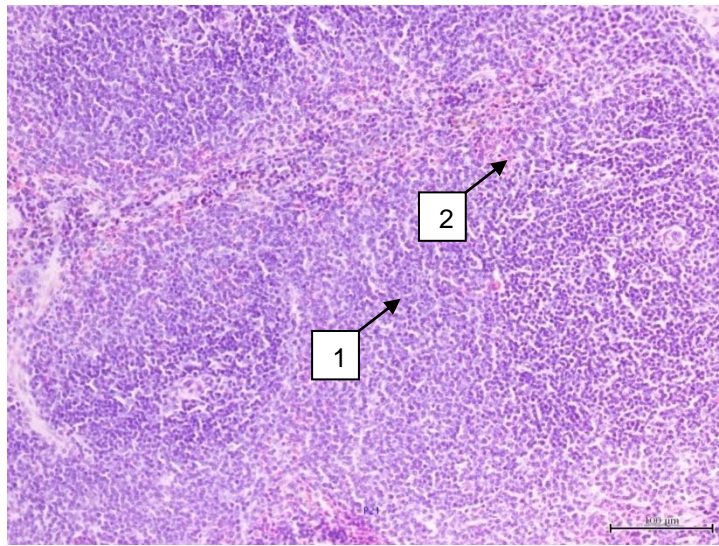
Keterangan histologi limpa:
 1. Sel limpatik
 2. Eritrosit

Gambar 18. Histologi jaringan limpa mencit tanpa pemberian sediaan sirup imunomodulator kasumba turate (kontrol) dengan pembesaran mikroskopik 200x.



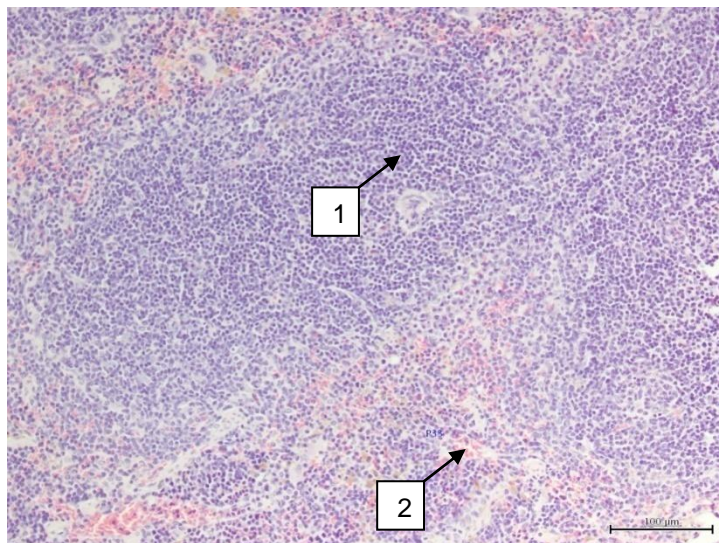
Skor : 0 (nol)
 Sel limpa normal

Gambar 19. Histologi jaringan limpa mencit kelompok I diberikan sediaan sirup imunomodulator kasumba turate 1 ml/30 g BB mencit selama 14 hari dengan pembesaran mikroskopik 200x.



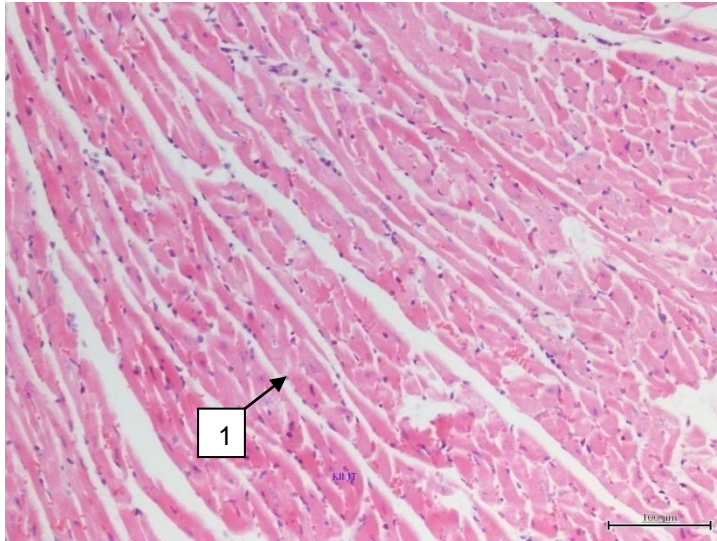
Skor : 0 (nol)
 Sel limpa normal

Gambar 20. Histologi jaringan limpa mencit kelompok II diberikan sediaan sirup imunomodulator kasumba turate 1 ml/30 g BB mencit selama 21 hari dengan pembesaran mikroskopik 200x.



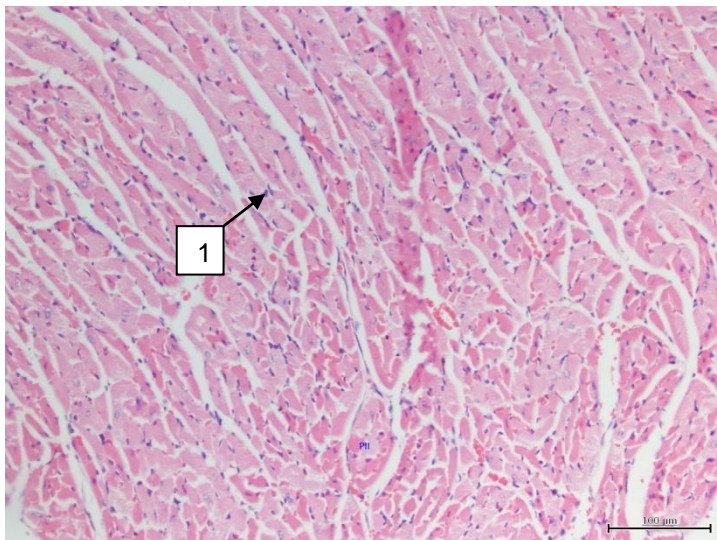
Skor : 0 (nol)
 Sel limpa normal

Gambar 21. Histologi jaringan limpa mencit kelompok III diberikan sediaan sirup imunomodulator kasumba turate 1 ml/30 g BB mencit selama 28 hari dengan pembesaran mikroskopik 200x.



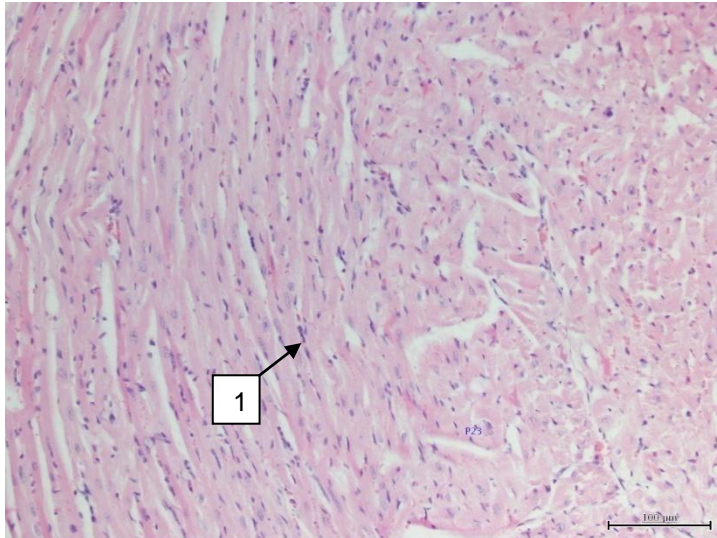
Keterangan histologi jantung:
1. Inti sel

Gambar 22. Histologi jaringan jantung mencit tanpa pemberian sediaan sirup imunomodulator kasumba turate (kontrol) dengan pembesaran mikroskopik 200x.



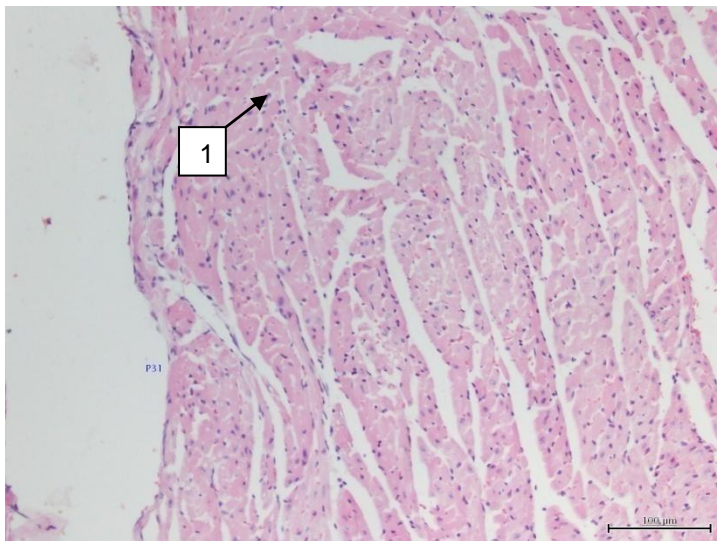
Skor : 0 (nul)
Sel jantung normal

Gambar 23. Histologi jaringan jantung mencit kelompok I diberikan sediaan sirup imunomodulator kasumba turate 1 ml/30 g BB mencit selama 14 hari dengan pembesaran mikroskopik 200x.



Skor : 0 (nol)
Sel jantung normal

Gambar 24. Histologi jaringan jantung mencit kelompok II diberikan sediaan sirup imunomodulator kasumba turate 1 ml/30 g BB mencit selama 21 hari dengan pembesaran mikroskopik 200x.



Skor : 0 (nol)
Sel jantung normal

Gambar 25. Histologi jaringan jantung mencit kelompok III diberikan sediaan sirup imunomodulator kasumba turate 1 ml/30 g BB mencit selama 28 hari dengan pembesaran mikroskopik 200x.



**KEMENTERIAN PENDIDIKAN NASIONAL
UNIVERSITAS HASANUDDIN
FAKULTAS KEDOKTERAN
KOMISI ETIK PENELITIAN KESEHATAN**

Sekretariat : Lantai 3 Gedung Laboratorium Terpadu

JL.PERINTIS KEMERDEKAAN KAMPUS TAMALANREA KM.10, Makassar. Telp. (0411)5780103, Fax (0411) 581431.
Contact person **dr. Agussalim Bukhari,PhD,SpGK** (HP. 081241850858), email: agussalimbukhari @ yahoo.com

REKOMENDASI PERSETUJUAN ETIK

Nomor : 605 /H4.8.4.5.31/PP36-KOMETIK/2013

Komisi Etik Penelitian Kesehatan Fakultas Kedokteran Universitas Hasanuddin, setelah melalui pembahasan dan penilaian, pada rapat tertanggal **20 Maret 2013**, telah memutuskan, protokol penelitian berjudul:

Uji Toksisitas Subkronis Sediaan Imunomodulator Kasumba turate (Carthamus tinctoriusL.) Pada mencit (Mus musculus)

dengan Peneliti Utama: **Yustirahayu B**

No. Register

| | | | | | | | | | |
|---|---|---|---|---|---|---|---|---|---|
| U | H | 1 | 3 | 0 | 2 | 0 | 0 | 7 | 9 |
|---|---|---|---|---|---|---|---|---|---|

yang diterima pada tanggal: **26 Februari 2013**

Perbaikan diterima tanggal: **8 April 2013**

dapat disetujui untuk dilaksanakan di Laboratorium Biofarmasi fakultas Farmasi Universitas Hasanuddin Makassar.

Persetujuan Etik ini berlaku sejak tanggal ditetapkan sampai dengan batas waktu pelaksanaan penelitian.

Pada akhir penelitian, **laporan pelaksanaan penelitian** harus diserahkan kepada KEPK Fakultas Kedokteran Unhas. Jika ada perubahan protokol dan /atau perpanjangan penelitian, harus mengajukan kembali permohonan kajian etik penelitian (amandemen protokol).

Makassar, 17 April 2013

Komisi Etik Penelitian Kesehatan Fak. Kedokteran Unhas



Prof. Dr. dr. Suryani As'ad, M.Sc., Sp.GK

NIP 19600504 1986 01 2 002