

## DAFTAR PUSTAKA

- Antunes LCS, Imperi F, Carattoli A, Visca P. (2011). *Deciphering the multifactorial nature of Acinetobacter baumannii pathogenicity*. PLoS ONE 6(8): e22674.
- Baker GC, Smith JJ, Cowan DA. (2003). *Review and Re-analysis of Domain-Specific 16S Primers*. Journal of Microbiology Methods ; 55(3): 541-55.
- Budiarti LY, Noormuthmainah, Rahmiati. (2007). *Jenis Bakteri dan Jamur Kontaminan Udara di Ruang Perawatan Sub Bagian Penyakit Dalam Rumah Sakit Umum Daerah Banjarbaru*. Jurnal Kedokteran Yarsi 15 (1) : 041-048
- Bosshard P. P., Abels S., Altwegg M., Böttger E. C. dan Zbinden R. (2003). *Comparison of Conventional and Molecular Methods for Identification of Aerobic Catalase-Negative Gram-Positive Cocci in the Clinical Laboratory*. Journal of Clinical Microbiology.
- Clarridge Jill E. (2004). *Impact of 16S rRNA Gene Sequence Analysis for Identification of Bacteria on Clinical Microbiology and Infectious Diseases*. Clin Microbiol; 17(4): 840–862.
- Fatchiyah dkk. (2011). *Biologi Molekular – Prinsip Dasar Analisis*. Penerbit Erlangga.
- Femstrom Aaron and Goldblatt Michael. (2013). *Aerobiology and Its Role in the Transmission of Infectious Diseases*. Jurnal of Pathogens, PMC 3556854
- Foglia Elizabeth E, Fraser Victoria J, Elward Alexis M. (2007). *Infection Control and Hospital Epidemiology*. JSTOR, Vol. 28, No. 3, pp. 299-306
- Gilkeson C.A, Noakes C.J, Sleigh P.A, Khan M.A.I, and Camargo-Valero M.A. (2011). *Simulating Pathogen Transport within a Naturally Ventilated Hospital Ward*. World Academy of Science, Engineering and Technology 55.
- Girard R, Perraud M, Prüss A, Savey A, Tikhomirov E, Thuriaux M, Vanhems P. (2002). *Prevention of hospital-acquired infections*. World Health Organization, 2nd edition.

- Hadinegoro SR dan Adisasmito AW. (2004). *Infeksi Bakteri Gram Negatif di ICU Anak : Epidemiologi, Manajemen Antibiotik dan Pencegahan*. Sari Pediatri, Vol 6 No.1 : 32-39.
- Hall Ian M, Barrass Iain, Leach Steve, Pittet Didier & Hugonnet Stephane. (2012). *Transmission dynamics of methicillin-resistant Staphylococcus aureus in a medical intensive care unit*. *J. R. Soc. Interface* 2639-2652
- Hathway E.A, Noakes C.J, and Sleight P.A, and Fletcher L.A. (2011). *CFD simulation of airborne pathogen transport due to human activities*. Elsevier Volume 46, Issue 12.
- Helgason Erlendur, Økstad Ole Andreas, Caugant Dominique A., Johansen Henning A., Fouet Agnes, Mock Michéle, Hegna Ida dan Kolstø Anne-Brit. (2000). *Bacillus anthracis, Bacillus cereus, and Bacillus thuringiensis—One Species on the Basis of Genetic Evidence*. *Appl. Environ. Microbiol* vol. 66 no. 6 2627-2630.
- Hoffman P.N, Williams J, Stacey A, Bennett A.M, Ridgway G.L, Dobson C, Fraser I, and Humphreys H. (2002). *Microbiological Commissioning and Monitoring of Operating Theatre Suites*. *Journal of Hospital Infection* 52 : 1-28
- Inweregbu Ken, Dave Jayshree, Pittard Alison. (2005). *Nosocomial infections. The Board of Management and Trustees of the British Journal of Anaesthesia*, Volume 5 Number 1 2005.
- Jacobs Janette L., Fasi Anthony C., Ramette Alban, Smith James J., Hammerschmidt Raymond and Sundin George W. (2008). *Identification and Onion Pathogenicity of Burkholderia cepacia Complex Isolates from the Onion Rhizosphere and Onion Field Soil*. *Appl. Environ. Microbiol* vol. 74 no. 10 3121-3129.
- Jensen Paul A and Schafer Millie P. (1998). *Sampling and Characterization of Bioaerosols*. NIOSH Manual of Analytical Methods, Centers for Disease Control and Prevention.
- Jolley Keith A., Bliss Carly M., Bennett Julia S., Bratcher Holly B., Brehony Carina, Colles Frances M., Wimalarathna Helen, Harrison Odile B., Sheppard Samuel K., Cody Alison J., and Maiden Martin C. J. (2012). *Ribosomal multilocus sequence typing: universal characterization of bacteria from domain to strain*. *Microbiology*,

158, 1005–1015 Department of Zoology, University of Oxford, Oxford, UK.

Jonasson J, Olofsson M, Monstein HJ. (2002). *Classification, identification and subtyping of bacteria based on pyrosequencing and signature matching of 16S rDNA fragments*. APMIS ;110(3):263-72.

Lu Jang-Jih, Cherng-Lih Perng, Shih-Yi Lee, & Wan Chih-Chieng. (2000). *Use of PCR with Universal Primers and Restriction Endonuclease Digestions for Detection and Identification of Common Bacterial Pathogens in Cerebrospinal Fluid*. Journal of Clinical Microbiology, vol. 38 no. 6 2076-2080

Lobo Ingrid. (2008). *Basic Local Alignment Search Tool (BLAST)*. Nature Education.

Kementerian Kesehatan Republik Indonesia. (2004) *Keputusan Menteri Kesehatan Republik Indonesia Nomor 1204/Menkes/SK/X/2004 tentang Persyaratan Kesehatan Lingkungan Rumah Sakit*. Diunduh dari : [http://www.hukor.depkes.go.id/up\\_prod\\_kepmenkes](http://www.hukor.depkes.go.id/up_prod_kepmenkes)

Kim KY, Kim KS, & Kim D. (2010). *Distribution characteristics of airborne bacteria and fungi in the general hospitals of Korea*. Ind Health ; 48(2):236-43

Kiratisin P, Li L, Murray PR, dan Fischer SH. (2003). *Identification of bacteria recovered from clinical specimens by 16S rRNA gene sequencing*. Eur J Clin Microbiol Infect Dis ;22(10):628-31.

Kochevar Steven D. (2006). *Basic Guide to Particle Counters and Particle Counting*. Particle Measuring Systems, Inc.

Kolmos HJ. (2007). *Hospital infections: sources and routes of infection*. PMID:18211776.

Leitão Jorge H., Sousa Sílvia A., Ferreira Ana S., Ramos Christian G., Silva Inês N., and Moreira Leonilde M. (2010). *Pathogenicity, virulence factors, and strategies to fight against Burkholderia cepacia complex pathogens and related species*. Applied Microbiology and Biotechnology Volume 87, Issue 1, pp 31-40.

Li Y, Leung G.M, Tang J.W, Yang X, Chao C.Y.H, Lin J.Z, et. al. (2007). *Role of Ventilation in Airborne Transmission of Infectious Agents in the Built Environment – A Multidisciplinary Systematic Review*. DOI : 10.1111/j.1600-0668.2006.00445.x

- Loutet Slade A. and Valvano Miguel A. (2010). *A Decade of Burkholderia cenocepacia Virulence Determinant Research*. Infect. Immun vol. 78 no. 10 4088-4100.
- Martin Elena, Kämpfer Peter dan Jäckel Udo. (2010). *Quantification and Identification of Culturable Airborne Bacteria from Duck Houses*. The Annals Occupation Hygien 54 (2): 217-227. doi: 10.1093/annhyg/mep088
- Menezes Blum D, Brattfich OJ, et. al. (2009). *Hospital Strain Colonization by Staphylococcus aureus*. Braz J Med Biol Res vol. 42 no, 3.
- Mims Cedric, Dockrell Hazel M, Goering Richard V, Roitt Ivan, Wakelin Derek, Zuckerman Mark. (2004). *Medical Microbiology*. Elsevier Mosby, Third Edition.
- Mitani Noriaki, Koizumi Akira, Sano Reiko, Masutani Takayuki, Murakawa Koichi, Mikasa Keiichi & Okamoto Yasuyuki. (2005). *Molecular Typing of Methicillin-Resistant Staphylococcus aureus by PCR-RFLP and Its Usefulness in an Epidemiological Study of an Outbreak*. Jpn. J. Infect. Dis., 58 (4), 250-252, 2005
- Mount David W. (2004). *Using the Basic Local Alignment Search Tool (BLAST)*. Cold Spring Harbor Laboratory Press.
- Murayama M, Kakinuma Y, Maeda Y, Rao JR, et al. (2010). *Molecular identification of airborne bacteria associated with aerial spraying of bovine slurry waste employing 16S rRNA gene PCR and gene sequencing techniques*. Pubmed/20018377
- Noakes, C.J, Sleight, P.A, Escombe, A.R, Beggs C.B. (2006). *Use of CFD Analysis in Modifying a TB Ward in Lima, Peru*. Indoor Built Environ ; 15 ; 1 : 41-47
- Park Dong-Uk, Yeom Jeong-Kwan, Lee Won Jae, and Lee Kyeong-Min. (2013). *Assessment of the Levels of Airborne Bacteria, Gram-Negative Bacteria, and Fungi in Hospital Lobbies*. International Journal of Environmental Research and Public Health.
- Pasquarella C, Pitzurra O, and Savino A. (2000). *The Index of Microbial Air Contamination*. Journal of Hospital Infection 46 : 241-256

- Peleg Anton Y., Seifert Harald and Paterson David L. (2008). *Acinetobacter baumannii: Emergence of a Successful Pathogen*. Clin Microbiol Rev ; 21(3): 538–582.
- Peleg Anton Y, & Hooper David C. (2010). *Hospital-Acquired Infections Due to Gram-Negative Bacteria*. N Engl J; 362:1804-1813
- Petti C. A., Polage C. R. dan Schreckenberger P. (2005). *The Role of 16S rRNA Gene Sequencing in Identification of Microorganisms Misidentified by Conventional Methods*. Journal of Clinical Microbiology.
- Qian Hua, Li Yuguo, Nielsen Peter V, and Huang Xinghuang. (2003). *Predicting Spatial Distribution of Infection Risk of Airborne Transmission Diseases in a Hospital Ward*. Department of Mechanical Engineering, Shanghai Jiaotong University, Shanghai, China.
- Reissbrodt R, Rassbach A, Burghardt B, Rienäcker I, Mietke H, Schleif J, Tschäpe H, Lyte M, dan Williams PH. (2004). *Assessment of a new selective chromogenic Bacillus cereus group plating medium and use of enterobacterial autoinducer of growth for cultural identification of Bacillus species*. J Clin Microbiol;42(8):3795-8.
- Sacchi Claudio T., Whitney Anne M., Reeves Michael W., Mayer Leonard W., and Popovic Tanja. (2002). *Sequence Diversity of Neisseria meningitidis 16S rRNA Genes and Use of 16S rRNA Gene Sequencing as a Molecular Subtyping Tool*. Journal of Clinical Microbiology, P. 4520–4527.
- Sayma, Abdunaser. (2009). *Computational Fluid Dynamics*. Abdunaser Sayma & Ventus Publishing ApS
- Schloss Patrick D., Gevers Dirk, dan Westcott Sarah L. (2011). *Reducing the Effects of PCR Amplification and Sequencing Artifacts on 16S rRNABased Studies*. Journal of PLoS One; 6(12): e27310.
- Soergel David A W, Dey Neelendu, Knight Rob, dan Brenner Steven E. (2012). *Selection of Primers for Optimal Taxonomic Classification of Environmental 16S rRNA Gene Sequences*. The Isme Journal ; 6 (7) : 1444.

- Song Yuli, Liu Chengxu, McTeague Maureen dan Finegold Sydney M. (2003). *16S Ribosomal DNA Sequence-Based Analysis of Clinically Significant Gram-Positive Anaerobic Cocci*. Journal of Clinical Microbiology.
- Stapleton Melanie R., Wright Lynda, Clarke Simon R., Moseby Hilde, Tarkowski Andrej, Vendreng Margareta and Foster Simon J. *Identification of conserved antigens from staphylococcal and streptococcal pathogens*. J Med Microbiol vol. 61 no. Pt 6 766-779.
- Sudharsanam S, Swaminathan S, Ramalingam A, Thangavel G, Annamalai R, Steinberg R, Balakrishnan K, and Srikanth P. (2012). *Characterization of Indoor Bioaerosols from a Hospital Ward in a Tropical Setting*. African Health Sciences.
- Tang Julian W. (2009). *The effect of environmental parameters on the survival of airborne infectious agents*. Journal of The Royal Society Interface.
- Tang Yi Wei, Ellis Nicole M., Hopkins Marlene K., Smith Douglas H., Dodge Deborah E. dan Persing David H. (1998). *Comparison Phenotypic and Genotypic Techniques for Identification of Unusual Aerobic Pathogenic Gram-Negative Bacilli*. Journal of Clinical Microbiology.
- van den Broek P. J., van der Reijden T. J. K. , van Strijen E., Helmig-Schurter A. V., Bernards A. T. dan Dijkshoorn L. (2009). *Endemic and Epidemic Acinetobacter Species in a University Hospital: an 8-Year Survey*. J. Clin. Microbiol vol. 47 no. 11 3593-3599.
- Vilas-Boas G, Sanchis V, Lereclus D, Lemos MV, Bourguet D. (2002). *Genetic differentiation between sympatric populations of Bacillus cereus and Bacillus thuringiensis*. Appl Environ Microbiol.;68(3):1414-24.
- Wang Yong dan Qian Pei-Yuan. (2009). *Conservative Fragments in Bacterial 16S rRNA Genes and Primer Design for 16S Ribosomal DNA Amplicons in Metagenomic Studies*. PLoS ONE 4(10): e7401. doi:10.1371/journal.pone.0007401.
- Woo Patrick C. Y., Ng Kenneth H. L., Lau Susanna K. P., Yip Kam-tong, Fung Ami M. Y., Leung Kit-wah, Tam Dorothy M. W., Que Tak-lun, dan Yuen Kwok-yung. (2003). *Usefulness of the MicroSeq 500 16S Ribosomal DNA-Based Bacterial Identification System for Identification of Clinically Significant Bacterial Isolates with*

*Ambiguous Biochemical Profiles*. Journal of Clinical Microbiology; 41(5): 1996–2001.

World Health Organization (WHO). (2002). *Prevention of hospital-acquired infections*. Department of Communicable Disease, Surveillance and Response

Wu MJ, Feng YS, Sung MP, Surampalli RY. (2011). *Quantification and analysis of airborne bacterial characteristics in a nursing care institution*. J. Air Waste Manag Assoc ; 61(7):732-9

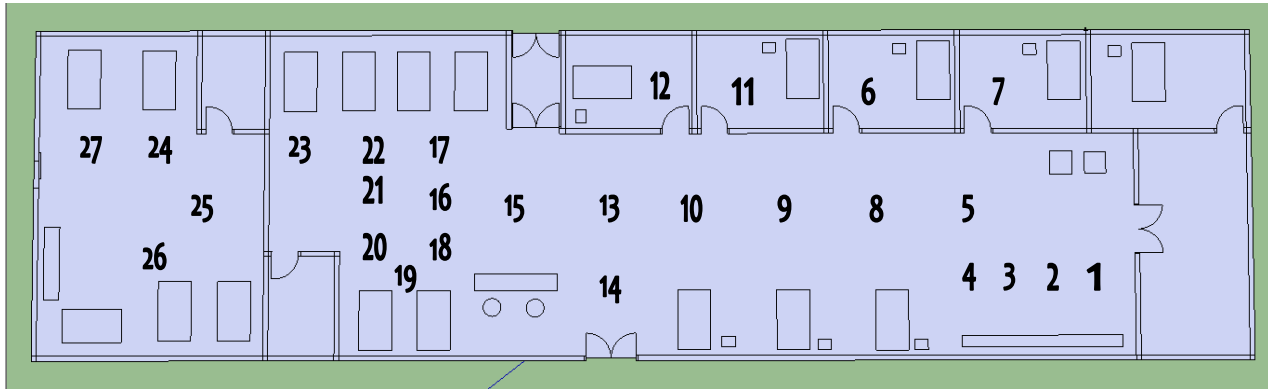
Yam R, Yuen PL, Yung R and Choy T. (2011). *Rethinking Hospital General Ward Ventilation Design Using Computational Fluid Dynamics*. The Journal of Hospital Infection Volume 77, Issue 1, Pages 31-36.

Yassin M.F and Almouqatea S. (2010). *Assessment of Airborne Bacteria and Fungi in an Indoor and Outdoor Environment*. Int. J. Environ. Sci. Tech, 7 (3), 535-544.

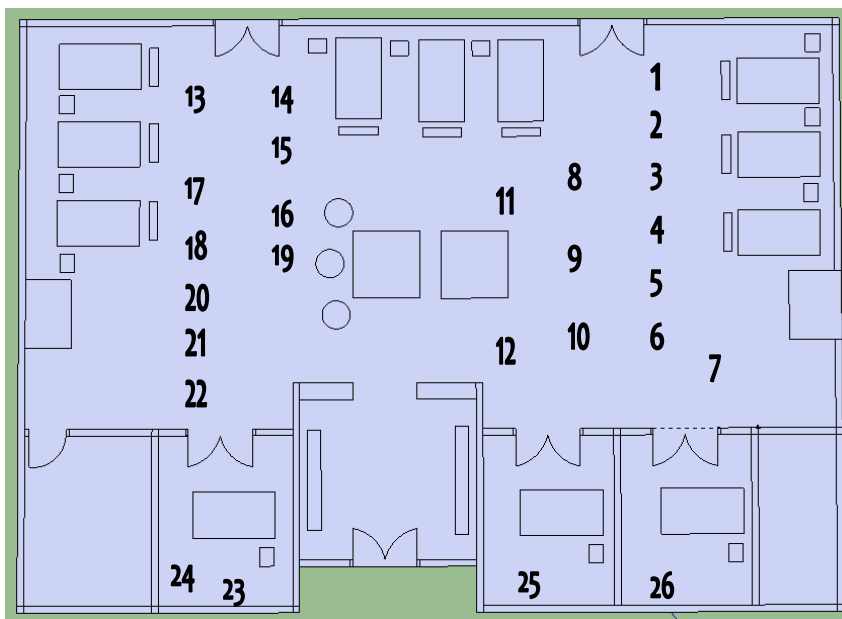
Yuwono, Triwibowo. (2005). *Biologi Molekular*. Penerbit Erlangga.

Zaloudikova Barbora, Kelbi Martin, Pasa Libor dan Freiburger Tomas. *Genotypic versus Phenotypic Methods in The Detection of Listeria monocytogenes prosthetic joint infection*. Journal of Medical Microbiology.

Lampiran 1. Lokasi sampling



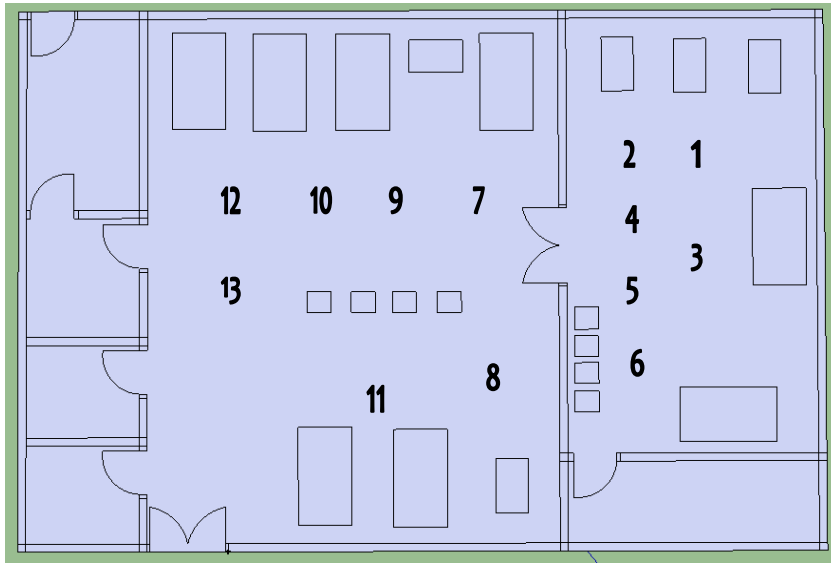
Gambar 9. Titik sampling ICU



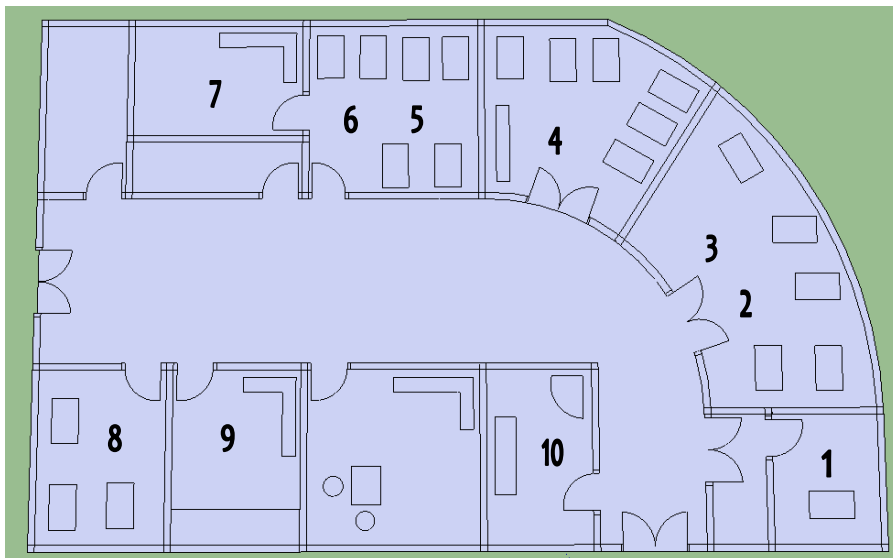
Gambar 10. Titik sampling CVCU

Gambar oleh Andi Nurhasanah, mahasiswa Arsitektur Unhas.





Gambar 11. Titik sampling PICU



Gambar 12. Titik sampling NICU

Gambar oleh Andi Nurhasanah, mahasiswa Arsitektur UH.

Lampiran 2. Titik sampling dan angka kuman ICU

No	Waktu	Suhu (°C)	Pencahayaan (lux)	Kelembaban	Angka Kuman (cfu/m <sup>3</sup> )
1	11:32	23.4	106	59.6	540
2	11:35	22.9	102	58.6	536
3	11:40	22.9	87	59.8	696
4	11:45	22.9	50	60.9	604
5	12:00	23.4	98	59.7	7540
6	12:05	22.8	158	61.5	700
7	12:10	23.3	101	65.3	904
8	12:14	24	150	58.6	7540
9	12:20	24.5	145	59.6	896
10	12:23	24.3	175	57.3	680
11	12:25	23.4	74	59.4	460
12	12:30	24.1	166	60.1	972
13	12:33	24.3	52	58.2	1864
14	12:36	24.5	53	59.1	528
15	12:40	24.6	58	60	624
16	12:45	25	70	59.6	452
17	12:48	25.2	169	59.1	572
18	12:55	25.5	308	58.7	404
19	13:00	24.2	234	58.4	1096
20	13:05	25.6	202	59	1580
21	13:10	25.4	229	56.7	1076
22	13:14	24.5	357	57.1	668
23	13:20	25.6	170	57.4	7540
24	13:23	26.7	187	63.1	1212
25	13:28	26.9	114	66.6	912
26	13:31	26.9	122	61.6	504
27	13:35	27.8	126	61	7540
Rata-rata		24.6	143	59.9	

Lampiran 3. Titik sampling dan angka kuman CVCU

No	Waktu	Suhu (°C)	Pencahayaan (lux)	Kelembaban	Angka kuman (cfu/m3)
1	12:38	29.2	76	64.5	1244
2	12:41	29.1	107	65.2	1412
3	12:45	28.9	127	64.1	660
4	12:51	29.1	126	66.1	776
5	12:55	29.2	77	64.7	1108
6	13:00	29.2	65	66.1	2292
7	13:06	29	31	68.7	1068
8	13:09	29	116	64	2868
9	13:15	29	90	67.1	1640
10	13:20	29.2	49	65.8	1524
11	13:25	29.3	68	66.4	652
12	13:29	29.5	133	67.2	992
13	13:34	29.1	100	68.5	600
14	13:39	28.7	85	67.2	632
15	13:43	28.7	127	66	844
16	13:47	28.5	146	68.1	1040
17	13:51	28.6	104	70.7	528
18	13:55	28.6	92	69	508
19	13:59	28.7	142	67.3	964
20	14:03	28.6	91	69.2	632
21	14:07	28.5	63	69.3	920
22	14:11	28.4	45	67.7	1364
23	14:15	26.1	38	61.9	548
24	14:18	26.3	29	61.9	1376
25	14:23	27.8	100	62.1	7540
26	14:03	28.8	63	64	7540
Rata-rata		28.7	88	66.3	

Lampiran 4. Titik sampling dan angka kuman PICU

No	Waktu	Suhu (°C)	Pencahayaan (lux)	Kelembaban	Angka Kuman (cfu/m <sup>3</sup> )
1	15:30	27.5	124	70.8	1212
2	15:35	27.8	122	68.3	1864
3	15:47	27.9	104	68.8	852
4	15:51	27.5	123	72.3	1068
5	15:55	28	129	68.1	800
6	15:59	28	161	67.8	680
7	16:04	28.1	149	67.8	1376
8	16:09	28.3	148	66.6	1340
9	16:12	28.3	140	67.2	1188
10	16:15	28.1	150	65.5	1468
11	16:20	28.1	139	68.1	2004
12	16:25	27.8	162	68.7	1724
13	16:30	27.9	138	68.3	1168
Rata-rata		27.9	138	68.3	

Lampiran 5. Titik sampling dan angka kuman NICU

No	Waktu	Suhu (°C)	Pencahayaan (lux)	Kelembaban	Angka Kuman (cfu/m <sup>3</sup> )
1	10:20	27.7	66	76.9	4600
2	10:30	27.7	60	65.6	7540
3	10:35	27.9	72	63.8	3412
4	10:45	28.3	127	66.9	7540
5	10:50	27.9	54	64.7	7540
6	10:58	27.9	54	62.1	7540
7	11:03	28.3	5	64.3	7540
8	11:05	28.8	72	64.5	7540
9	11:10	28.9	85	64.8	7540
10	11:15	28.7	73	65.7	2960
Rata-rata		28.2	67	65.9	

Lampiran 6. Tabel konversi koloni MAS-100

<b>r</b>	<b>Pr</b>	<b>r</b>	<b>Pr</b>	<b>r</b>	<b>Pr</b>	<b>r</b>	<b>Pr</b>	<b>r</b>	<b>Pr</b>	<b>r</b>	<b>Pr</b>
1	1	51	56	101	123	151	209	201	332	251	541
2	2	52	57	102	124	152	211	202	335	252	547
3	3	53	58	103	126	153	213	203	338	253	553
4	4	54	59	104	127	154	216	204	341	254	560
5	5	55	61	105	129	155	218	205	344	255	566
6	6	56	62	106	131	156	220	206	347	256	573
7	7	57	63	107	132	157	222	207	350	257	580
8	8	58	64	108	134	158	224	208	353	258	587
9	9	59	66	109	135	159	226	209	357	259	594
10	10	60	67	110	137	160	228	210	360	260	601
11	11	61	68	111	138	161	230	211	363	261	609
12	12	62	69	112	140	162	232	212	367	262	616
13	13	63	71	113	142	163	235	213	370	263	624
14	14	64	72	114	143	164	237	214	374	264	632
15	15	65	73	115	145	165	239	215	377	265	641
16	16	66	74	116	146	166	241	216	381	266	649
17	17	67	76	117	148	167	243	217	384	267	658
18	19	68	77	118	150	168	246	218	388	268	667
19	20	69	78	119	151	169	248	219	391	269	677
20	21	70	80	120	153	170	250	220	395	270	686
21	22	71	81	121	155	171	253	221	399	271	696
22	23	72	82	122	156	172	255	222	403	272	707
23	24	73	83	123	158	173	257	223	407	273	717
24	25	74	85	124	160	174	260	224	410	274	728
25	26	75	86	125	161	175	262	225	414	275	740
26	27	76	87	126	163	176	264	226	418	276	752
27	28	77	89	127	165	177	267	227	422	277	765
28	29	78	90	128	167	178	269	228	427	278	778
29	30	79	92	129	168	179	272	229	431	279	791
30	32	80	93	130	170	180	274	230	435	280	805
31	33	81	94	131	172	181	277	231	439	281	820
32	34	82	96	132	174	182	279	232	444	282	836
33	35	83	97	133	175	183	282	233	448	283	853
34	36	84	98	134	177	184	284	234	452	284	871
35	37	85	100	135	179	185	287	235	457	285	889
36	38	86	101	136	181	186	289	236	462	286	909
37	39	87	103	137	183	187	292	237	466	287	931
38	41	88	104	138	184	188	295	238	471	288	954
39	42	89	105	139	186	189	297	239	476	289	979
40	43	90	107	140	188	190	300	240	481	290	1006
41	44	91	108	141	190	191	303	241	486	291	1036
42	45	92	110	142	192	192	306	242	491	292	1069
43	46	93	111	143	194	193	308	243	496	293	1107
44	47	94	113	144	196	194	311	244	501	294	1150
45	49	95	114	145	198	195	314	245	507	295	1200
46	50	96	115	146	200	196	317	246	512	296	1260
47	51	97	117	147	202	197	320	247	518	297	1335
48	52	98	118	148	203	198	323	248	523	298	1435
49	53	99	120	149	205	199	326	249	529	299	1585
50	55	100	121	150	207	200	329	250	535	300	1885

Keterangan :

r = Number of colony forming units counted on 90 mm Petri dish

Pr = Probable statistical total

Angka kuman (cfu/m3) = ( Pr/Volume sampling ) x 1000

Lampiran 7. Data angka kuman udara RS. Wahidin Sudirohusodo April 2013

No	Lokasi	Angka Kuman (cfu/m <sup>3</sup> )	Baku Mutu	Spesies
1	MRI (Ruang Administrasi)	1,132	200-500	<i>Stapylocooccus epidermidis</i>
2	Poli Paru	724	-	<i>Stapylocooccus saphrophyticus</i>
3	Autoclave	192	200	<i>Stapylocooccus saphrophyticus</i>
4	OK Ruang Pemulihan 1	948	200-500	<i>Stapylocooccus saphrophyticus</i>
5	OK Ruang Pemulihan 2	1,328	200-500	<i>Stapylocooccus aureus</i>
6	OK IRD (OR III)	1,388	10	<i>Stapylocooccus epidermidis</i>
7	OK IRD (OR II)	1,268	10	<i>Stapylocooccus aureus</i>
8	OK IRD (OR I)	828	10	<i>Stapylocooccus aureus</i>
9	IPSRS (Boiler)	1328	-	<i>Stapylocooccus epidermidis</i>
10	Poliklinik Bedah Syaraf	715	-	<i>Stapylocooccus epidermidis</i>
11	Poliklinik Kulit Kelamin	283	-	<i>Stapylocooccus saphrophyticus</i>
12	Rekam Medis (Ruang Pelayanan)	492	200-500	<i>Stapylocooccus aureus</i>
13	Rekam Medis (Ruang Data)	248	200-500	<i>Stapylocooccus epidermidis</i>
14	Pinang OK (Ruang Operasi)	696	10	<i>Stapylocooccus epidermidis</i>
15	Poliklinik Gizi	760	-	<i>Stapylocooccus saphrophyticus</i>
16	Poliklinik Gigi dan Mulut	400	-	<i>Stapylocooccus aureus</i>
17	Poliklinik Bedah Tumor	540	-	<i>Stapylocooccus saphrophyticus</i>
18	Poliklinik Bedah Ortopedi	420	-	<i>Stapylocooccus saphrophyticus</i>
19	Poliklinik Bedah Anak	324	-	<i>Stapylocooccus saphrophyticus</i>
20	Poliklinik Bedah Umum (Tindakan)	540	-	<i>Streptococcus pyogenes</i>
21	Poliklinik Bedah Urologi	940	-	<i>Stapylocooccus epidermidis</i>
22	Poliklinik Nyeri Akupuntur	272	-	<i>Enterococcus sp.</i>
23	Poliklinik THT	376	-	<i>Stapylocooccus aureus</i>
24	Poliklinik Mata	536	-	<i>Stapylocooccus aureus</i>
25	Poliklinik Jiwa	308	-	<i>Stapylocooccus saphrophyticus</i>
26	Poliklinik Reumatologi Tropis Menular	680	-	<i>Streptococcus pyogenes</i>
27	Poliklinik Diabet Endoktrin	524	-	<i>Stapylocooccus epidermidis</i>
28	Poliklinik Penyakit Dalam	2092	-	<i>Stapylocooccus epidermidis</i>
29	Poliklinik Pegawai RSWS	184	-	<i>Stapylocooccus epidermidis</i>
30	Poliklinik Syaraf	372	-	<i>Stapylocooccus aureus</i>

Lanjutan lampiran 7. Data angka kuman udara RS. Wahidin  
Sudirohusodo April 2013

No	Lokasi	Angka Kuman (cfu/m <sup>3</sup> )	Baku Mutu	Spesies
31	Pinang, Ruang Tindakan	2,632	200	<i>Stapylocooccus epidermidis</i>
32	Apotik ICU	992	-	<i>Klebsiella sp</i>
33	Apotik RIB	624	-	<i>Staphylococcus aureus</i>
34	Lontara 4, (Atas Depan) Kamar 5	1,524	200-500	<i>Staphylococcus saprophyticus</i>
35	Lontara 4 (Atas) Belakang Kamar 8	964	200	<i>Klebsiella sp.</i>
36	Lontara 4 (Bawah) Belakang Kamar 1 Kelas III	668	200	<i>Bacillus cereus</i>
37	Lontara 4, Kamar 5 bawah	1212	200	<i>Staphylococcus aureus</i>
38	Gastro Rg LGIE (Endoscopi)	528	200-500	<i>Streptococcus pneumoniae</i>
39	Gastro Rg UGIE (Endoscopi)	776	200-500	<i>Enterobacter sp</i>
40	HD. Titik 2	444	200	<i>Klebsiella pneumoniae</i>
41	HD. Titik 1 (Ruangan Besar)	486	200	<i>Staphylococcus epidermidis</i>
42	Gastro Poliklinik	496	-	<i>Enterobacter sp.</i>
43	Poli Anak Umum Ruang Klinik 4	862	-	<i>Streptococcus pneumoniae</i>
44	Speech Therapi	1,026	-	<i>Enterobacter cloacae</i>
45	Poli Obstetri Umum	752	-	<i>Enterococcus sp.</i>
46	Poli Fertilitas Endokrin Reproduksi	600	-	<i>Streptococcus pneumoniae</i>
47	Laboratorium Cairan Tubuh	580	200-500	<i>Bacillus cereus</i>
48	Laboratorium Immunologi	478	200-500	<i>Staphylococcus saprophyticus</i>
49	Laboratorium Hematologi	625	200-500	<i>Enterococcus.sp</i>
50	Kamar 2, Pemeriksaan Ultrasonografi	356	200	<i>Bacillus cereus</i>
51	Kamar 5, Pemeriksaan Ultrasonografi	252	200	<i>Staphylococcus saprophyticus</i>
52	Kamar 9, Pemeriksaan Ultrasonografi	468	200	<i>Staphylococcus aureus</i>
53	Radiologi Koridor	871	200-500	<i>Staphylococcus saprophyticus</i>
54	Katerisasi Jantung	644	200	<i>Staphylococcus epidermidis</i>
55	Ruang Pertemuan Lantai 3, 304	310	200-500	<i>Staphylococcus epidermidis</i>



Lanjutan lampiran 7. Data angka kuman udara RS. Wahidin  
Sudirohusodo April 2013

No	Lokasi	Angka Kuman (cfu/m <sup>3</sup> )	Baku Mutu	Spesies
56	Ruang Pertemuan Lantai 3, 315	912	200-500	<i>Staphylococcus aureus</i>
57	PCC Lantai 2 Nurse Station	792	200-500	<i>Staphylococcus saprophyticus</i>
58	PCC Lantai 2 Kamar 207	460	200-500	<i>Staphylococcus saprophyticus</i>
59	PCC Lantai 2 Kamar 201	456	200-500	<i>Staphylococcus saprophyticus</i>
60	PCC Lantai 3 Nurse Station	872	200-500	<i>Staphylococcus saprophyticus</i>
61	PCC Lantai 3 Kamar 322	1792	200-500	<i>Staphylococcus epidermidis</i>
62	PCC Lantai 3 Kamar 323	1412	200-500	<i>Staphylococcus epidermidis</i>
63	PCC Lantai 4 Nurse Station	680	200-500	<i>Staphylococcus epidermidis</i>
64	PCC Lantai 4 kamar 421	572	200-500	<i>Staphylococcus epidermidis</i>
65	PCC Lantai 4 kamar 416	972	200-500	<i>Staphylococcus saprophyticus</i>
66	PCC W.Cafe	1,036	200-500	<i>Staphylococcus aureus</i>
67	PCC Medical Check-up	>3.770	-	<i>Staphylococcus pyogenes</i>
68	PCC Lantai I Paru	528	-	<i>Staphylococcus epidermidis</i>
69	PCC Lantai I Bedah Minor	384	-	<i>Staphylococcus aureus</i>
70	Laboratorium IRD	383	200-500	<i>Staphylococcus aureus</i>
71	Luka Bakar (Nurse Station)	1,136	200-500	<i>Enterococcus sp</i>
72	Luka Bakar (tindakan)	808	200	<i>Staphylococcus aureus</i>
73	IRD Anak	706	200	<i>Staphylococcus saprophyticus</i>
74	IRD Non Bedah	1582	200	<i>Staphylococcus epidermidis</i>
75	IRD Bedah	2012	200	<i>Staphylococcus epidermidis</i>
76	Ruang Fisioterapi (Paviliun IRM Kamar 1))	2,300	200-500	<i>Staphylococcus epidermidis</i>
77	Ruang Fisioterapi (Elektroterapi Kamar 3)	672	200	<i>Staphylococcus aureus</i>
78	Ruang Instalasi Gizi (Area Pemasakan)	196	200-500	<i>Staphylococcus saprophyticus</i>
79	Ruang Instalasi Gizi (Area Distribusi/Penyajian)	236	200-500	<i>Streptococcus pneumoniae</i>
80	Ruang Instalasi Gizi (Area persiapan Snack/Tengah)	212	200-500	<i>Staphylococcus aureus</i>
81	Ruang Instalasi Gizi (Area Persiapan Lauk)	208	200-500	<i>Streptococcus pneumoniae</i>
82	Ruang Instalasi Gizi (dapur persiapan VIP)	400	200-500	<i>Staphylococcus saprophyticus</i>

Lanjutan lampiran 7. Data angka kuman udara RS. Wahidin  
Sudirohusodo April 2013

No	Lokasi	Angka Kuman (cfu/m <sup>3</sup> )	Baku Mutu	Spesies
83	Ruang Forensik (Tindakan/Pengawetan) + Ruang Tunggu Keluarga	284	200-500	<i>Streptococcus pneumoniae</i>
84	Ruang Kepala Instalasi Forensik	256	200-500	<i>Streptococcus pneumoniae</i>
85	CSSD Laundry (basah/kotor)	460	-	<i>Staphylococcus saprophyticus</i>
86	CSSD Laundry (distribusi bersih)	620	-	<i>Streptococcus pyogenes</i>
87	CSSD Packing Linen	324	-	<i>Staphylococcus epidermidis</i>
88	CSSD Ruang Dekontaminasi	400	200	<i>Staphylococcus saprophyticus</i>
89	Kantin	697	200-500	<i>Staphylococcus saprophyticus</i>
90	Lontara 2 Bawah Depan, Kamar 2 Kelas 2	920	200-500	<i>Staphylococcus epidermidis</i>
91	Lontara 2 Atas Belakang, Ruang Kemoterapi	170	200-500	<i>Staphylococcus saprophyticus</i>
92	Lontara 3 , Mata Kamar 1 Kelas 2	610	200-500	<i>Staphylococcus saprophyticus</i>
93	Lontara 3 , Kulit kelamin Kamar 3 Kelas 3	532	200-500	<i>Staphylococcus aureus</i>
94	Lontara 3 Atas THT	2,636	200-500	<i>Staphylococcus epidermidis</i>
95	Lontara 3 Bawah Depan Kamar 2	3,120	200-500	<i>Staphylococcus saprophyticus</i>
96	Lontara 3 Bawah Belakang Kamar 4	2,053	200-500	<i>Staphylococcus epidermidis</i>
97	Lontara 2 Bawah Belakang Kamar 4	773	200-300	<i>Staphylococcus saprophyticus</i>
98	Lontara 2 Lantai Atas, Depan Kamar 2	1,670	200-300	<i>Staphylococcus epidermidis</i>
99	Lontara 1 Lantai Atas, Ruang Perawatan Khusus	2,188	200-500	<i>Staphylococcus saprophyticus</i>
100	Lontara 1, kelas 3 kamar 2, Lantai Atas Belakang	404	200-500	<i>Staphylococcus epidermidis</i>
101	Pakis Kamar 1	296	200-500	<i>Streptococcus pyiogenes</i>
102	Pakis Kamar 5	508	200-500	<i>Streptococcus pneumoniae</i>
103	Lontara I Lantai Bawah, Kamar 4 kelas 3, bawah belakang	220	200-500	<i>Enterococcus sp.</i>
104	RPK Lontara I Bawah Depan	700	200-500	<i>Staphylococcus epidermidis</i>

Lanjutan lampiran 7. Data angka kuman udara RS. Wahidin  
Sudirohusodo April 2013

No	Lokasi	Angka Kuman (cfu/m <sup>3</sup> )	Baku Mutu	Spesies
105	Palem Lantai 1, Kamar B1 No.3	820	200-500	<i>Staphylococcus epidermidis</i>
106	Palem Lantai 1, Kamar B2 No.1	224	200-500	<i>Staphylococcus epidermidis</i>
107	Palem Lantai 2, Kamar 5	2,140	200-500	<i>Staphylococcus saprophyticus</i>
108	Ruang Obat (Palem Lantai Atas)	384	200-500	<i>Staphylococcus epidermidis</i>
109	Pantry	235	200-500	<i>Staphylococcus saprophyticus</i>
110	Nurse Station Lantai 3	400	200-500	<i>Staphylococcus aureus</i>
111	Kamar 5 Lantai 3	1,280	200-500	<i>Staphylococcus epidermidis</i>
112	Kamar 4 Lantai 3	350	200-500	<i>Enterococcus sp.</i>
113	Kamar 8 Negative Pressure Perempuan Lantai 2	350	200-500	<i>Staphylococcus saprophyticus</i>
114	Laboratorium Mikrobiologi Lantai 2 (Nechi)	452	200-500	<i>Staphylococcus aureus</i>
115	Kamar Negatif Pressure Laki-laki Lantai 2	234	200-500	<i>Staphylococcus aureus</i>
116	Kamar 3 Lantai I	> 6.283	200-500	<i>Staphylococcus epidermidis</i>
117	Nurse Station Lantai I	820	200-500	<i>Staphylococcus aureus</i>

Keterangan :

Baku Mutu berdasar KEPMENKES RI No. 1204/KENKES/SK X/2004

Data kontrol udara ruang, kerjasama RS Wahidin Sudirohusodo dan BTKLPP Kelas I Makassar

Lampiran 8. Data angka kuman udara RS. Wahidin Sudirohusodo Maret  
2012

No	Lokasi	Angka Kuman (cfu/m <sup>3</sup> )	Baku Mutu
1	Lontara 3 Lt 1 ( Ruang intermediete depan)	452	200 - 500
2	Lontara 3 Lt 1 (R. Intermediete belakang)	1,560	200 - 500
3	Lontara 3 Lt 2 (Mata)	706	200 - 500
4	Lontara 3 Lt 2 (R. THT)	720	200 - 500
5	Lontara 3 Lt 2 (Kulit Kelamin)	903	200 - 500
6	Palem Lt 2, kamar B1/8	885	200
7	Lontara 1 Lt 1 kamar 4	1,414	200 - 500
8	Lontara 1 Lt 2 kamar 2	520	200 - 500
9	Lontara 1 Lt 2 kamar 3	3,816	200-500
10	Lontara 4 Lt 2 (Kamar 1)	452	200 - 500
11	Lontara 4 (kamar 2)	963	200 - 500
12	Lontara 4 Lt 2 (Kamar 9)	1,055	200
13	Lontara 4 (Ruang tindakan)	1,356	200 - 500
14	Pinang (kamar bersalin)	432	200 - 500
15	Infection Centre Lt 1 (Kamar 3)	650	200 - 500
16	Infection Centre Lt 1 (ICU)	2,555	200
17	Infection Centre Lt 1 (Nurse station)	684	200 - 500
18	Infection Centre Lt 2 (Nurse station)	590	200 - 500
19	Infection Centre Lt 2 (Lab Mikrobiologi)	685	200 - 500
20	Infection Centre Lt 3 (Nurse station)	650	200 - 500
21	Hemodialisa (Titik 1)	4,100	200 - 500
22	Hemodialisa 2	990	200-500
23	PICU	1,270	200
24	ICU 1	2,286	200
25	ICU 2	470	200
26	OR IRD 1	100	10
27	OR IRD 2	790	10
28	OR IRD 3	4	10
29	OR Sentral (Ruang Perawat)	440	200-500
30	Ruang Recovery (Pemulihan)	240	10
31	OR sentral 1 (Bedah Anak)	146	10
32	OR Sentral 2 (Bedah Digestif)	248	10
33	OR Sentral 3 (Bedah Tumor)	228	10

Lanjutan lampiran 8. Data angka kuman udara RS. Wahidin  
Sudirohusodo Maret 2012

No	Lokasi	Angka Kuman (cfu/m <sup>3</sup> )	Baku Mutu
34	OR Sentral 4 (Bedah Urologi)	194	10
35	OR Sentral 5 (Bedah Obgyn)	194	10
36	OR Sentral 6 (Bedah Min. Invasif)	64	10
37	OR Sentral 7 (Bedah Plastik)	122	10
38	OR Sentral 8 (Bedah Thorax)	584	10
39	OR Sentral 9 (Bedah THT)	86	10
40	OR Sentral 10 (Bedah Mata)	128	10
41	OR Sentral 11 (Bedah Saraf)	334	10
42	OR Sentral 12 (Bedah Orthopedi)	334	10
43	Autoclave	236	-
44	Boiler	516	-
45	Laundry (Area bersih/pelipatan)	170	200 - 500
46	Laundry (Area kotor)	308	200 - 500
47	CSSD (R. Dekontaminasi)	62	200 - 500
48	CSSD (Packing Linen)	220	200 - 500
49	Gizi (Titik 1)	> 7.540	200 - 500
50	Gizi (Titik 2)	972	200 - 500
51	Gizi (titik 3)	636	200 - 500
52	Polik Gastro	1,603	200 - 500
53	Polik Endokrin	403	200 - 500
54	Polik Gigi	414	200 - 500
55	Polik Jiwa	783	200-500
56	Polik Kulit Kelamin	282	200 - 500
57	Polik Bedah digestive	1570	200-500
58	Polik Reumatologi	983	200 - 500
59	Polik Nyeri	442	200 - 500
60	Polik Interna	> 7.540	200-500
61	Polik Bedah Tumor	725	200 - 500
62	Polik Mata	1445	200-500
63	Polik saraf	775	200 - 500
64	Polik Orthopedi	640	200 - 500
65	Rekam Medik	1,372	200
66	Polik Bedah urologi	> 7.540	200-500

Lanjutan lampiran 8. Data angka kuman udara RS. Wahidin  
Sudirohusodo Maret 2012

No	Lokasi	Angka Kuman (cfu/m <sup>3</sup> )	Baku Mutu
67	Polik THT	610	200 - 500
68	Polik Gizi	605	200 - 500
69	Polik Bedah anak	605	200 - 500
70	Koridor PCC	1,953	-
71	IRD Bedah	1295	200
72	Laboratorium IRD	725	200 - 500
73	IRD Non Bedah	> 7.540	200
74	IRD Anak	867	200
75	Luka Bakar (Ruang tindakan)	1475	200
76	Luka bakar (Ruang perawatan)	725	200
77	CVCU (Katerisasi jantung)	1,870	200
78	CVCU	915	200

Catatan :

Baku Mutu berdasar KEPMENKES RI No. 1204/KENKES/SK X/2004

Data kontrol udara ruang, kerjasama RS Wahidin Sudirohusodo dan BTKLPP Kelas I  
Makassar

Lampiran 9. Data angka kuman udara RS. Wahidin Sudirohusodo  
November 2012

No	Lokasi	Angka Kuman (cfu/m <sup>3</sup> )	Baku Mutu	Spesies
1	Lontara 3 Lt 1 ( Ruang intermediete depan)	875	200 - 500	<i>Staphylococcus epidermidis</i>
2	Lontara 3 Lt 1 (R. Intermediete belakang)	1.435	200 - 500	<i>Staphylococcus aureus</i>
3	Lontara 3 Lt 2 (Mata)	1.171	200 - 500	<i>Staphylococcus epidermidis</i>
4	Lontara 3 Lt 2 (R. THT)	980	200 - 500	<i>Staphylococcus aureus</i>
5	Lontara 3 Lt 2 (Kulit Kelamin)	620	200 - 500	<i>Klebsiella pneumoniae</i>
6	Palem Lt 1 (Koridor B2)	716	200 - 500	<i>Staphylococcus epidermidis</i>
7	Palem Lt 1 VIP (Koridor B1)	716	200 - 500	<i>Staphylococcus epidermidis</i>
8	Palem Lt 2, kamar B1/8	1.328	200	<i>Staphylococcus aureus</i>
9	Palem Lt 2 (Ruang perawat)	392	200 - 500	<i>Streptococcus pyogenes</i>
10	Lontara 1 Lt 1 kamar 4	2.912	200 - 500	<i>Staphylococcus epidermidis</i>
11	Lontara 1 Lt 1 (RPK)	> 3.770	200 - 500	<i>Staphylococcus epidermidis</i> , <i>Streptococcus pyogenes</i>
12	Lontara 1 Lt 2 kamar 2	1.340	200 - 500	<i>Staphylococcus epidermidis</i>
13	Lontara 1 Lt 2 kamar 3	1.244	200-500	<i>Staphylococcus epidermidis</i>
14	Lontara 2 Lt 1 (kamar 7B)	1.036	200 - 500	<i>Staphylococcus epidermidis</i>
15	Lontara 2 Lt 2 (kamar 7)	915	200 - 500	<i>Staphylococcus epidermidis</i>
16	Lontara 2 Lt 2, kamar 10 (Bedah digestive)	972	200 - 500	<i>Staphylococcus epidermidis</i>
17	Lontara 2 Lt 1 (kamar isolasi)	1.735	200 - 500	<i>Staphylococcus epidermidis</i>
18	Lontara 4 Lt 2 (Kamar 1)	1.496	200 - 500	<i>Staphylococcus epidermidis</i>
19	Lontara 4 (kamar 2)	358	200 - 500	<i>Streptococcus pyogenes</i>
20	Lontara 4 Lt 2 (Kamar 9)	400	200	<i>Streptococcus pyogenes</i>
21	Lontara 4 (Ruang tindakan)	775	200 - 500	<i>Staphylococcus epidermidis</i>
22	Poli Paru	815	200 - 500	<i>Staphylococcus epidermidis</i>
23	Pinang (Ruang operasi)	528	10	<i>Enterococcus faecalis</i>
24	Pinang (kamar bersalin)	1884	200 - 500	<i>Staphylococcus epidermidis</i>
25	NICU (Ruang Isolasi)	1,862	200 - 500	<i>Staphylococcus aureus</i>

Lanjutan lampiran 9. Data angka kuman udara RS. Wahidin  
Sudirohusodo November 2012

No	Lokasi	Angka Kuman (cfu/m <sup>3</sup> )	Baku Mutu	Spesies
26	NICU, Level II B	3.008	200	<i>Staphylococcus epidermidis</i>
27	Infection Centre Lt 1 (Kamar 3)	1.200	200 - 500	<i>Staphylococcus epidermidis</i>
28	Infection Centre Lt 1 (ICU)	543	200	<i>Staphylococcus epidermidis</i>
29	Infection Centre Lt 1 (Nurse station)	730	200 - 500	<i>Staphylococcus epidermidis</i>
30	Infection Centre (Ruang perawat)	1.275	200 - 500	<i>Staphylococcus epidermidis</i>
31	Infection Centre Lt 2 (Kamar 5)	655	200 - 500	<i>Streptococcus pneumoniae</i>
32	Infection Centre Lt 2 (Nurse station)	1.020	200 - 500	<i>Enterococcus faecalis</i>
33	Infection Centre Lt 2 (Lab Mikrobiologi)	573	200 - 500	<i>Klebsiella pneumoniae</i>
34	Infection Centre Lt 3 (Nurse station)	1975	200 - 500	<i>Staphylococcus epidermidis</i>
35	Infection Centre Lt 3 (Kamar 1)	987	200 - 500	<i>Streptococcus pneumoniae</i>
36	Radiologi (Kamar 5)	1.740	200 - 500	<i>Staphylococcus epidermidis</i>
37	Radiologi (Kamar 4)	1.244	200	<i>Staphylococcus epidermidis</i>
38	Radiologi (Koridor)	1.146	200 - 500	<i>Staphylococcus epidermidis</i>
39	Radiologi (Kamar 9)	> 7.540	200 - 500	<i>Staphylococcus epidermidis</i>
40	Laboratorium (Ruang sampling)	3.245	200 - 500	<i>Streptococcus pneumoniae</i>
41	Laboratorium (Ruang Imunologi)	465	200 - 500	<i>Staphylococcus epidermidis</i> , <i>Klebsiella pneumoniae</i>
42	Laboratorium (Ruang Infeksi Tropis)	315	200 - 500	<i>Staphylococcus epidermidis</i>
43	Mother and Child (Ruang Onkologi)	136	200	<i>Staphylococcus epidermidis</i>
44	Mother and Child (Ruang vaksinasi)	212	200 - 500	<i>Klebsiella pneumoniae</i>
45	Mother and Child (Ruang Ginekologi)	1.395	200 - 500	<i>Staphylococcus epidermidis</i>
46	Mother and Child (Ruang anak, kamar tindakan)	104	200 - 500	<i>Staphylococcus epidermidis</i>
47	Hemodialisa (Titik 1)	844	200 - 500	<i>Staphylococcus epidermidis</i>



Lanjutan lampiran 9. Data angka kuman udara RS. Wahidin  
Sudirohusodo November 2012

No	Lokasi	Angka Kuman (cfu/m <sup>3</sup> )	Baku Mutu	Spesies
48	Hemodialisa 2	697	200-500	<i>Staphylococcus epidermidis</i>
49	PICU	> 1885	200	<i>Staphylococcus epidermidis</i>
50	ICU 1	836	200	<i>Staphylococcus epidermidis</i>
51	ICU 2	1.024	200	<i>Staphylococcus epidermidis</i>
52	ICU 3	640	200	<i>Staphylococcus epidermidis</i>
53	OR IRD 1	114	10	<i>Staphylococcus epidermidis</i>
54	OR IRD 2	134	10	<i>Staphylococcus epidermidis</i>
55	OR IRD 3	72	10	<i>Staphylococcus epidermidis</i>
56	OR Sentral (Ruang Perawat)	310	200-500	<i>Staphylococcus epidermidis</i>
57	Ruang Recovery (Pemulihan)	197	10	<i>Staphylococcus epidermidis</i> , <i>Staphylococcus aureus</i>
58	OR sentral 1 (Bedah Anak)	128	10	<i>Staphylococcus epidermidis</i>
59	OR Sentral 2 (Bedah Digestif)	224	10	<i>Staphylococcus epidermidis</i>
60	OR Sentral 3 (Bedah Tumor)	196	10	<i>Staphylococcus epidermidis</i>
61	OR Sentral 4 (Bedah Urologi)	174	10	<i>Staphylococcus epidermidis</i>
62	OR Sentral 5 (Bedah Obgyn)	136	10	<i>Enterococcus faecalis</i>
63	OR Sentral 6 (Bedah Min. Invasif)	100	10	<i>Staphylococcus epidermidis</i>
64	OR Sentral 7 (Bedah Plastik)	328	10	<i>Staphylococcus epidermidis</i>
65	OR Sentral 8 (Bedah Thorax)	262	10	<i>Staphylococcus epidermidis</i>
66	OR Sentral 9 (Bedah THT)	78	10	<i>Staphylococcus epidermidis</i>
67	OR Sentral 10 (Bedah Mata)	180	10	<i>Staphylococcus epidermidis</i>
68	OR Sentral 11 (Bedah Saraf)	72	10	<i>Staphylococcus epidermidis</i>
69	OR Sentral 12 (Bedah Orthopedi)	94	10	<i>Staphylococcus epidermidis</i>
70	Forensik	496	200 - 500	<i>Staphylococcus epidermidis</i>
71	Autoclave	180	-	<i>Staphylococcus epidermidis</i>
72	Boiler	228	-	<i>Streptococcus pyogenes</i>

Lanjutan lampiran 9. Data angka kuman udara RS. Wahidin  
Sudirohusodo November 2012

No	Lokasi	Angka Kuman (cfu/m <sup>3</sup> )	Baku Mutu	Spesies
73	Farmasi (Apotik IRD)	1.405	-	<i>Enterococcus faecalis</i>
74	Farmasi (Apotik Gakin)	755	-	<i>Staphylococcus epidermidis</i>
75	Fisioterapi (Kamar 3)	942	200-500	<i>Staphylococcus epidermidis</i>
76	Fisioterapi (kamar 7)	756	200-500	<i>Staphylococcus epidermidis</i>
77	Laundry (Area bersih/pelipatan)	415	200 - 500	<i>Enterococcus faecalis</i>
78	Laundry (Area kotor)	374	200 - 500	<i>Streptococcus pyogenes</i>
79	CSSD (R. Dekontaminasi)	400	200 - 500	<i>Staphylococcus epidermidis</i>
80	CSSD (Packing Linen)	366	200 - 500	<i>Staphylococcus epidermidis</i>
81	Kantin	553	-	<i>Staphylococcus epidermidis</i> , <i>Staphylococcus aureus</i>
82	Gizi (Titik 1)	185	200 - 500	<i>Staphylococcus epidermidis</i>
83	Gizi (Titik 2)	52	200 - 500	<i>Staphylococcus epidermidis</i>
84	Gizi (titik 3)	860	200 - 500	<i>Staphylococcus epidermidis</i>
85	Polik Gastro	968	200 - 500	<i>Staphylococcus epidermidis</i>
86	Polik Endokrin	528	200 - 500	<i>Staphylococcus epidermidis</i>
87	Polik Gigi	484	200 - 500	<i>Staphylococcus epidermidis</i>
88	Polik Pegawai	876	200 - 500	<i>Streptococcus pyogenes</i>
89	Polik Jiwa	360	200-500	<i>Staphylococcus epidermidis</i>
90	Polik Kulit Kelamin	438	200 - 500	<i>Staphylococcus epidermidis</i>
91	Polik Bedah digestive	354	200-500	<i>Staphylococcus epidermidis</i> , <i>Staphylococcus aureus</i>
92	Polik Reumatologi	> 7.540	200 - 500	<i>Staphylococcus epidermidis</i> , <i>Streptococcus pyogenes</i>
93	Polik Nyeri	502	200 - 500	<i>Staphylococcus epidermidis</i>
94	Polik Interna	554	200-500	<i>Staphylococcus epidermidis</i>
95	Polik Bedah Tumor	628	200 - 500	<i>Staphylococcus epidermidis</i> , <i>Staphylococcus aureus</i>
96	Polik Mata	684	200-500	<i>Streptococcus pyogenes</i>
97	Polik saraf	428	200 - 500	<i>Staphylococcus epidermidis</i>
98	Polik Orthopedi	1005	200 - 500	<i>Staphylococcus epidermidis</i>
99	Rekam Medik	424	200	<i>Staphylococcus epidermidis</i>

Lanjutan lampiran 9. Data angka kuman udara RS. Wahidin  
Sudirohusodo November 2012

No	Lokasi	Angka Kuman (cfu/m <sup>3</sup> )	Baku Mutu	Spesies
100	Polik Bedah urologi	370	200-500	<i>Staphylococcus epidermidis</i>
101	Polik THT	1,093	200 - 500	<i>Staphylococcus epidermidis</i>
102	Polik Bedah Saraf	640	200 - 500	<i>Staphylococcus epidermidis</i>
103	Polik Gizi	488	200 - 500	<i>Staphylococcus epidermidis</i>
104	Gastro I	370	200-500	<i>Staphylococcus epidermidis</i>
105	Polik Bedah anak	330	200 - 500	<i>Staphylococcus epidermidis</i>
106	Koridor PCC	872	-	<i>Staphylococcus epidermidis</i>
107	PCC Lt 3 (Koridor Timur)	410	-	<i>Staphylococcus epidermidis</i>
108	PCC Lt 3 (Koridor Barat)	216	-	<i>Staphylococcus epidermidis</i>
109	PCC (Polik Interna)	286	200-500	<i>Staphylococcus epidermidis</i>
110	PCC Polik Bedah	704	200-500	<i>Staphylococcus epidermidis</i>
111	PCC Lt 2 (hemodialisa)	766	200-500	<i>Staphylococcus epidermidis</i>
112	PCC Lt 2 (Fisioterapi)	854	200-500	<i>Staphylococcus epidermidis</i>
113	PCC Lt 2 (Kamar tindakan)	536	200-500	<i>Staphylococcus epidermidis</i>
114	PCC Lt 3 (Kamar 308)	528	200-500	<i>Streptococcus pneumoniae</i>
115	IRD Bedah	637	200	<i>Staphylococcus epidermidis</i>
116	Laboratorium IRD	538	200 - 500	<i>Staphylococcus epidermidis</i>
117	IRD Non Bedah	889	200	<i>Staphylococcus epidermidis</i>
118	IRD Anak	1,136	200	<i>Staphylococcus epidermidis</i>
119	Ruang Sekretariat Akreditasi	413	200-500	<i>Streptococcus pneumoniae</i>
120	Ruang Pertemuan	292	200-500	<i>Streptococcus pneumoniae</i>
121	Polik jantung (Koridor)	3.563	-	<i>Staphylococcus epidermidis</i>
122	Luka Bakar (Ruang tindakan)	1,570	200	<i>Staphylococcus epidermidis</i>

Lanjutan lampiran 9. Data angka kuman udara RS. Wahidin  
Sudirohusodo November 2012

No	Lokasi	Angka Kuman (cfu/m <sup>3</sup> )	Baku Mutu	Spesies
123	Luka bakar (Ruang perawatan)	808	200	<i>Staphylococcus epidermidis</i>
124	CVCU (Katerisasi jantung)	1.126	200	<i>Staphylococcus epidermidis</i> , <i>Staphylococcus aureus</i>
125	CVCU	1.381	200	<i>Staphylococcus epidermidis</i>

Catatan :

Baku Mutu berdasar KEPMENKES RI No. 1204/KENKES/SK X/2004

Data kontrol udara ruang, kerjasama RS Wahidin Sudirohusodo dan BTKLPP Kelas I Makassar

Lampiran 10; Data hasil kultur sampel ICU

No	Warna Koloni	Sampel	Uraian	Bentuk Permukaan	Bentuk	Gram	Katalase	Mantol	Hemolisis	Classe	Spesies			
1	Merah	IM 3	entire	convex	circular	Positif kokus	Negatif	Negatif	Tidak tumbuh	Tidak tumbuh	-			
2	Merah	IM 5	entire	convex	circular	Positif kokus	positif	positif	gamma	Negatif	S. saprophyticus			
3	Merah	IM 6	entire	convex	circular	Positif kokus	positif	positif	gamma	Negatif	S. saprophyticus			
4	Putih	IP 2	entire	convex	circular	Positif kokus	positif	positif	beta	Negatif	S. haemolyticus			
5	Putih	IP 3	entire	convex	circular	Positif kokus	positif	positif	alpha	Negatif	Staphylococcus sp			
6	Putih	IP 4	entire	convex	circular	Positif kokus	positif	positif	alpha	Negatif	Staphylococcus sp			
7	Putih	IP 5	entire	convex	circular	Positif kokus	positif	positif	beta	Negatif	S. haemolyticus			
8	Kuning	IP 6	entire	convex	circular	Positif kokus	positif	positif	gamma	Negatif	Staphylococcus sp			
9	Putih	IP 7	undulate	raised	circular	Positif kokus	Tidak tumbuh	positif	alpha	Negatif	S. saprophyticus			
10	Kuning cerah	IK 3	entire	convex	circular	Positif kokus	positif	positif	gamma	Negatif	S. saprophyticus			
11	Kuning	IK 4	entire	convex	circular	Positif kokus	positif	positif	gamma	Negatif	S. saprophyticus			
12	Kuning	IK 5	entire	convex	circular	Positif kokus	positif	positif	gamma	Negatif	S. saprophyticus			
13	Kuning cerah	IK 6	entire	convex	circular	Positif kokus	positif	positif	beta	Negatif	S. haemolyticus			
14	Kuning	IK 7	entire	umbonate	circular	Positif kokus	Tidak tumbuh	positif	gamma	Negatif	S. saprophyticus			
15	Kuning cerah	IK 8	entire	convex	circular	Positif kokus	positif	positif	gamma	Negatif	S. saprophyticus			
16	Kuning	IK 9	entire	convex	circular	Positif kokus	positif	positif	alpha	Negatif	Staphylococcus sp			
17	Kuning	IK 11	entire	flat	circular	Positif kokus	positif	positif	beta	positif	S. aureus			
18	Kuning cerah	IK 12	entire	convex	circular	Positif kokus	Tidak tumbuh	positif	gamma	Negatif	S. saprophyticus			
19	Kuning cerah	IK 13	entire	convex	circular	Positif kokus	positif	positif	beta	positif	S. aureus			
20	Putih	IK 14	entire	convex	circular	Positif kokus	positif	positif	beta	Negatif	S. haemolyticus			
21	Kuning	IK 15	entire	umbonate	circular	Positif kokus	Tidak tumbuh	positif	gamma	Negatif	S. saprophyticus			
22	Kuning	IK 16	entire	convex	circular	Positif kokus	positif	positif	alpha	Negatif	Staphylococcus sp			
23	Kuning cerah	IK 17	entire	convex	circular	Positif kokus	Tidak tumbuh	positif	beta	Negatif	S. haemolyticus			
Sampel	Gram	Katalase	Oksidase	KIA	MIO	SUK	MAN	MSA	NaCl 65 %	Koa	Bacit	NV	PB	Spesies
IK 6	+	-	-	A/A, -/-	-/+	+	-	-	+	-	-	+	+	S. saprophyticus
Sampel	Gram	Katalase	Oksidase	KIA	MIO	GLU	LAK	SUK	MAL	MAN	Spesies			
IM 3	CGP	-	+	AD/AL, -/-	-/+	-	-	-	-	-	Bacillus sp			
IK 11	UGP	+	+	AD/AL, -/-	+/+	+	-	-	-	-	Bacillus cereus			
Sampel	Gram	Katalase	Oksidase	KIA	MIO	CIT	URE	LIA	MALO	GLU	OF			Spesies
IK 4	BGN	+	-	AD/AL, -/-	-/+	-	-	+	-	-	-	-	-	Acinetobacter baumannii

Lampiran 11; Data hasil kultur sampel CVCU

No	Warna Koloni	Sampel	Teori	Pemulaan	Bentuk	Gram	Katalase	Mentol	Hemolisis	Onase	Spesies
1	Kuning orah	CK 1	entire	convex	circular	positif kokus	positif	positif	alfa	Negatif	Staphylococcus sp
2	Kuning orah	CK 2	entire	raised	circular	positif kokus	positif	positif	beta	Positif	S. aureus
3	Kuning orah	CK 3	entire	umbonata	circular	positif kokus	positif	positif	alfa	Negatif	Staphylococcus sp
4	Kuning orah	CK 4	entire	raised	circular	positif kokus	positif	positif	beta	Positif	S. aureus
5	Kuning orah	CK 5	entire	raised	circular	positif kokus	negatif	positif	beta	Negatif	Staphylococcus sp
6	Kuning orah	CK 6	entire	umbonata	circular	positif kokus	negatif	Tidak Tumbuh	alfa	Tidak Tumbuh	Tidak teridentifikasi
7	Kuning orah	CK 7	entire	convex	circular	positif kokus	negatif	Tidak Tumbuh	alfa	Tidak Tumbuh	Tidak teridentifikasi
8	Kuning orah	CK 8	entire	raised	circular	positif kokus	positif	positif	alfa	Negatif	Staphylococcus sp
9	Kuning orah	CK 9	entire	convex	circular	positif kokus	positif	Negatif	beta	Negatif	S. heemofticus
10	Kuning orah	CK 10	entire	raised	circular	positif kokus	positif	Negatif	beta	Negatif	S. heemofticus
11	Kuning orah	CK 11	undulate	raised	circular	positif kokus	positif	Negatif	alfa	Negatif	Staphylococcus sp
12	Kuning orah	CK 12	entire	convex	circular	positif kokus	positif	positif	alfa	Tidak Tumbuh	Staphylococcus sp
13	Kuning	CK 13	obata	umbonata	circular	positif kokus	positif	positif	Tidak Tumbuh	Positif	Staphylococcus sp
14	Putih	CP 1	entire	convex	circular	positif kokus	positif	Negatif	gamma	Negatif	Staphylococcus sp
15	Putih	CP 2	entire	umbonata	circular	positif kokus	positif	Negatif	gamma	Negatif	Staphylococcus sp
16	Putih	CP 3	seriate	raised	circular	positif kokus	negatif	Negatif	beta	Positif	Staphylococcus sp
17	Putih	CP 4	entire	entire	circular	positif kokus	negatif	Tidak Tumbuh	gamma	Tidak Tumbuh	Tidak teridentifikasi
18	Kuning	CP 5	entire	entire	circular	positif kokus	positif	Tidak Tumbuh	alfa	Tidak Tumbuh	Tidak teridentifikasi
19	Kuning	CP 6	seriate	seriate	raised	positif kokus	negatif	Positif	gamma	Tidak Tumbuh	S. saprophyticus
20	Kuning orah	CP 8	seriate	seriate	raised	positif kokus	positif	Positif	gamma	Negatif	S. saprophyticus
21	Putih	CP 9	entire	entire	convex	positif kokus	positif	Negatif	alfa	Negatif	Staphylococcus sp
22	Kuning	CP 11	seriate	seriate	raised	positif kokus	positif	Positif	gamma	Negatif	S. saprophyticus
23	Putih	CP 12	undulate	undulate	convex	positif kokus	negatif	Positif	beta	Negatif	S. heemofticus
24	Putih	CP 14	entire	entire	convex	positif kokus	negatif	Tidak Tumbuh	alfa	Tidak Tumbuh	Tidak teridentifikasi
25	Kuning orah	CP 15	entire	entire	convex	positif kokus	positif	Positif	gamma	Positif	S. saprophyticus
26	Putih	CP 16	entire	entire	convex	positif kokus	negatif	Tidak Tumbuh	beta	Negatif	Tidak teridentifikasi
27	Putih	CP 18	entire	entire	convex	positif kokus	positif	Positif	alfa	Negatif	Staphylococcus sp



Lanjutan lampiran 11; Data hasil kultur sampel CVCU

Sampel	Oksidase	Katalase	Gram	KIA	MIO	MRVP	CIT	URE	LIA	PAD	MALO	GLU	LAK	SUK	MAL	MAN	OF	Species
CK 6	-	+	BGN	AL/NC,-/-	-/-/-	-/-	-	-	+	-	-	-	-	-	-	-	-	<i>A. jwoffi</i>
CP 4	-	+	CGN	AL/NC,-/-	-/-/+		+	-	+		-	+					-	<i>A. baumannii</i>
CP 14	+	-	BGN	AL/NC,-/-	-/-/+		+	-	+		-	-					-	<del><i>Alkaligenes faecalis</i></del>
CP 16	-	+	CGP	AVA,-/-	-/-/+							-	-	+	-	-		<i>Bacillus</i> sp
Sampel	Oksidase	Katalase	Gram	KIA	MIO	SUK	MAN	MSA	NaCl 65 %	Koa	Bacit	NV	PB	Species				
CP 5	-	+	CGN	AL/AC,-/-	-/-/+	+	-	-	+	-	-	+	+	<i>S. haemolyticus</i>				
CK 7	-	+	CGN	AL/AL,-/-	-/-/-	-	-	+	+	-	-	-	+	<i>Staphylococcus</i> sp				

Lampiran 12; Data hasil kultur sampel PICU

No	Warna Koloni	Sampel	Tepi	Bentuk	Gram	Katalase	Mandi	Hemolisis	Onase	Spesies								
1	Putih keabuan	PP 1	entire	convex	Rositif kokus	Rositif	Negatif	beta	negatif	<i>S. haemolyticus</i>								
2	Putih	PP 2	entire	convex	Rositif kokus	Rositif	Rositif	beta	negatif	<i>S. haemolyticus</i>								
3	Putih	PP 3	serrate	raised	Rositif kokus	Rositif	Negatif	beta	Rositif tidak tumbuh	<i>S. haemolyticus</i>								
4	Putih	PP 4	entire	convex	Rositif kokus	Negatif	Negatif	alpha	tidak tumbuh	tidak teridentifikasi								
5	Putih	PP 7	entire	flat	Rositif kokus	Negatif	Rositif	beta	negatif tidak tumbuh	<i>S. haemolyticus</i>								
6	Kuning keabuan	PK 1	entire	convex	Rositif kokus	Negatif	Negatif	alpha	tidak tumbuh	tidak teridentifikasi								
7	Putih	PK 2	entire	convex	Rositif kokus	Negatif	Negatif	beta	negatif	<i>S. haemolyticus</i>								
8	Kuning	PK 3	entire	umbonate	Rositif kokus	Rositif	Rositif	alpha	negatif	<i>Staphylococcus sp</i>								
9	Kuning	PK 4	entire	convex	Rositif kokus	Negatif	Negatif	alpha	tidak tumbuh	tidak teridentifikasi								
10	Kuning keabuan	PK 5	entire	convex	Rositif kokus	Rositif	Rositif	gamma	negatif	<i>S. saprophyticus</i>								
11	Kuning keabuan	PK 6	undulate	raised	Rositif kokus	Rositif	Rositif	alpha	negatif	<i>Staphylococcus sp</i>								
12	Kuning	PK 7	serrate	raised	Rositif kokus	Rositif	Rositif	alpha	negatif tidak tumbuh	<i>Staphylococcus sp</i>								
13	Kuning	PK 8	entire	convex	Rositif kokus	Negatif	Negatif	alpha	tidak tumbuh	tidak teridentifikasi								
14	Putih	PK 9	entire	convex	Rositif kokus	Rositif	Rositif	alpha	negatif	<i>Staphylococcus sp</i>								
15	Kuning keabuan	PK 10	undulate	flat	Rositif kokus	Rositif	Negatif	alpha	Rositif	<i>Staphylococcus sp</i>								
Sampel	Oksidase	Katalase	Gram	KIA	MIO	MRVP	CIT	URE	LIA	PAD	MALO	GLU	LAK	SUK	MAL	MAN	OF	Spesies
PK 8	-	+	BGN	AL/AC,-/+	+/-	V/+	+	-	-	-	-	+	-	+	+	+	-	<i>Staphylococcus saprophyticus</i>
PK 4	-	+	BGN	AL/NC,-/+	+/+		+	V	+		-	+					-	<i>Staphylococcus aureus</i>
PP 4	-	+	UGN	AL/AC,-/+	+/+		+	-	+		-	-					-	<i>Acinetobacter baumannii</i>
PK 1	-	+	BGN	AL/AL,-/+	+/+		-	-	-		-	V					-	<i>Acinetobacter baumannii</i>



Lampiran 13; Data hasil kultur sampel NICU

No	Warna Koloni	Sampel	Tepl	Pemukaan	Bentuk	Gram	Katalase	Mantol	Hemolisis	Drase	Spesies
1	Butih susu	NP 1	entire	convex	circular	Positif kokus	Positif	Positif	beta	Negatif	S. haemolyticus
2	Butin	NP 2	entire	convex	circular	Positif kokus	Negatif	Idak lumbun	gamma	Idak lumbun	Idak tententikasi
3	Butin	NP 3	entire	raised	circular	Positif kokus	Positif	Idak lumbun	beta	Negatif	S. haemolyticus
4	Butin	NP 4	entire	raised	circular	Positif kokus	Negatif	Idak lumbun	beta	Negatif	S. haemolyticus
5	Butin	NP 5	entire	raised	circular	Positif kokus	Positif	Idak lumbun	beta	Negatif	S. haemolyticus
6	Kuning	NK 1	entire	convex	circular	Positif kokus	Positif	Positif	gamma	Negatif	S. sapropryticus
7	Kuning	NK 2	entire	convex	circular	Positif kokus	Positif	Positif	alpha	Negatif	Staphylococcus sp
8	Kuning	NK 3	entire	convex	circular	Positif kokus	Positif	Positif	gamma	Negatif	S. sapropryticus
9	Kuning	NK 4	entire	convex	circular	Positif kokus	Negatif	Idak lumbun	alpha	Idak lumbun	Idak tententikasi
10	Kuning	NK 5	entire	convex	circular	Positif kokus	Negatif	Idak lumbun	gamma	Idak lumbun	Idak tententikasi
11	Kuning	NK 6	entire	convex	circular	Positif kokus	Negatif	Idak lumbun	alpha	Idak lumbun	Idak tententikasi
12	Kuning	NK 7	entire	convex	circular	Positif kokus	Negatif	Idak lumbun	beta	Idak lumbun	Idak tententikasi
13	Kuning seran	NK 8	entire	convex	circular	Positif kokus	Positif	Positif	alpha	Positif	Staphylococcus sp
14	Kuning seran	NK 9	entire	convex	circular	Positif kokus	Negatif	Idak lumbun	alpha	Idak lumbun	Idak tententikasi
15	Kuning	NK 10	entire	convex	circular	Positif kokus	Positif	Positif	gamma	Positif	Staphylococcus sp

Sampel	Gram	Katalase	Oksidase	KIA	MIO	MRVP	CIT	URE	LIA	PAD	MALO	GLU	LAK	SUK	MAL	MAN	OF	Spesies
NK 4	BGN	+	-	A/A,-/-	+/+	+/+	-	-	-	-	-	+	+	+	+	+	+	Escherichia coli
NK 9	UGP	+	+	AD/AL,-/-	-/+	-	-	-	-	-	-	-	-	-	-	-	-	Bacillus sp
NK 7	UGP	+	-	AD/AL,-/-	-/+	-	-	-	-	-	-	-	-	-	-	-	-	Bacillus sp
NP 2	UGP	+	-	AD/AL,-/-	-/+	-	-	-	-	-	-	-	-	-	-	-	-	Bacillus sp
NP 4	UGP	-	+	AD/AC,-/-	-/+	-	-	+	+	+	+	+	+	+	+	+	+	Bacillus sp
NK 6	UGN	+	-	AD/NC,-/-	-/+	-	+	+	+	+	+	+	+	+	+	+	+	A. baumannii

Sampel	Gram	Katalase	Oksidase	KIA	MIO	SUK	MAN	MSA	NaCl 65%	Koa	Bacit	NV	PB	Spesies
NK 5	BGN	+	-	AL/AL,-/-	-/+	-	-	-	-	-	Bacit	-	+	Acinetobacter sp

Lampiran 14. Data hasil BLAST sampel ICU

<b>Sampel</b>	<b>Sekuen Sampel (awal-akhir)</b>	<b>Sekuen GenBank (awal-akhir)</b>	<b>Identifikasi (%)</b>	<b>Organisme</b>
IP7	13-121	1408-1516	100	Bacillus niacini
	13-120	1424-1531	100	Bacillus sp.
	13-120	1382-1489	100	Bacillus niabensis
	13-119	1406-1512	100	Bacillus pichinoty
	13-119	1406-1512	100	Bacillus koreensis
IK4	15-123	1392-1500	100	Acinetobacter schindleri
	15-123	1347-1455	99	Acinetobacter sp
	15-123	698-802	100	Acinetobacter calcoaceticus
	15-123	1395-1503	98	Alkanindiges illinoisensis
IK6	14-124	1450-1557	95	Burkholderia sp.
	14-124	1425-1532	95	Burkholderia vietnamiensis
	14-124	1394-1501	95	Burkholderia cenocepacia
	14-124	1388-1495	95	Burkholderia gladioli
	14-124	1365-1472	95	Burkholderia cepacia
IK11	13-124	1055-1168	99	Bacillus sp.
	13-122	1401-1510	100	Bacillus pumilus
	13-122	1402-1511	100	Bacillus aerophilus
	13-122	1400-1509	100	Bacillus safensis
	13-121	1402-1510	100	Bacillus altitudinis
	13-121	1402-1510	100	Bacillus stratosphericus
IM3	13-122	1409-1518	100	Bacillus cereus
	13-121	1407-1515	100	Bacillus flexus
	13-121	1405-1513	100	Sporosarcina sp.
	13-121	1405-1513	100	Bacillus subterraneus

Lampiran 15. Data hasil BLAST sampel CVCU

Isolat	Sekuen Sampel (awal-akhir)	Sekuen GenBank (awal-akhir)	Identifikasi (%)	Organisme
CP4	15-125	981-1092	98	Acinetobacter baumannii
	15-125	1389-1499	98	Acinetobacter sp.
	15-124	588-698	98	Acinetobacter calcoaceticus
	15-123	622-731	98	Bacillus sp.
CP5	13-128	1449-1560	94	Burkholderia sp.
	13-128	1424-1535	94	Burkholderia vietnamiensis
	13-128	1393-1504	94	Burkholderia cenocepacia
	13-128	1364-1475	94	Burkholderia cepacia
	13-128	1368-1479	94	Burkholderia gladioli
CP14	13-72	1449-1557	100	Burkholderia sp.
	13-72	1424-1532	100	Burkholderia vietnamiensis
	13-72	1393-1501	100	Burkholderia cenocepacia
	13-72	1364-1472	100	Burkholderia cepacia
	13-72	1387-1495	100	Burkholderia gladioli
CP16	14-73	1399-1508	100	Paenibacillus taichungensis
	14-73	1407-1515	100	Paenibacillus sp.
	14-73	1412-1519	100	Paenibacillus tundrae
	14-73	1407-1514	100	Paenibacillus xylanexedens
	14-73	1395-1503	99	Paenibacillus xylanilyticus
	14-73	1411-1519	99	Paenibacillus durus
	14-73	1387-1495	99	Paenibacillus pabuli
	14-73	589-697	99	Paenibacillus amylolyticus
	14-73	1385-1493	99	Paenibacillus barcinonensis
14-73	1384-1492	99	Paenibacillus illinoisensis	
CK3	15-124	1449-1557	97	Burkholderia sp.
	15-124	1424-1532	97	Burkholderia vietnamiensis
	15-124	1393-1501	97	Burkholderia cenocepacia
	15-124	1364-1472	97	Burkholderia cepacia
	15-124	1387-1495	97	Burkholderia gladioli
CK6	14-122	1449-1557	100	Burkholderia sp.
	14-122	1424-1532	100	Burkholderia vietnamiensis
	14-122	1364-1472	100	Burkholderia cepacia
	14-122	1393-1501	100	Burkholderia cenocepacia
	14-122	1387-1495	100	Burkholderia gladioli

Lampiran 16. Data hasil BLAST sampel PICU

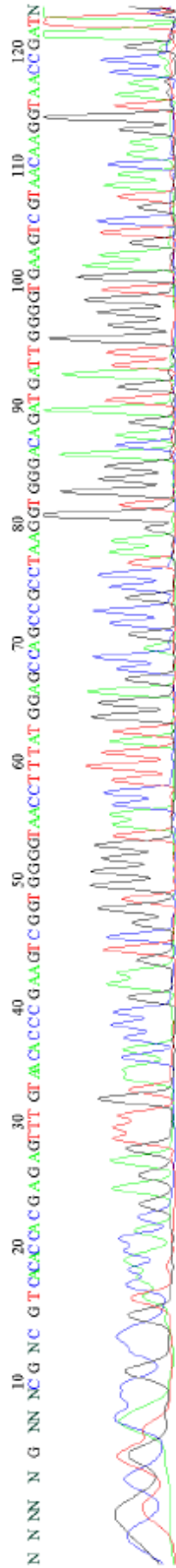
Sampel	Sekuen Sampel (awal-akhir)	Sekuen GenBank (awal-akhir)	Identifikasi (%)	Organisme
PP1	14-71	1409-1466	89	Staphylococcus haemolyticus
	27-83	4-60	85	Bacillus sp.
	14-71	1407-1464	83	Bacillus firmus
	14-71	1408-1465	83	Bacillus mycoides
	14-70	1408-1465	83	Bacillus cereus
	14-70	1404-1461	83	Bacillus thuringiensis
	14-71	1389-1446	83	Bacillus vietnamensis
	14-126	1407-1517	82	Bacillus subtilis
	14-125	1387-1494	82	Clostridium sp.
	14-127	1455-1565	81	Bacillus niacini
	14-126	1407-1516	81	Bacillus vireti
	14-125	1404-1512	81	Leuconostoc citreum
PP4	15-129	983-1094	96	Acinetobacter baumannii
	15-125	1391-1498	96	Acinetobacter sp.
	15-125	590-697	96	Acinetobacter calcoaceticus
	15-125	624-731	96	Bacillus sp.
PP7	11-114	1399-1502	100	Bacillus sp.
	11-113	1400-1502	100	Bacillus aerophilus
	11-113	1351-1453	100	Bacillus safensis
	11-113	1365-1467	100	Bacillus pumilus
	11-113	1400-1502	100	Bacillus stratosphericus
	11-113	1399-1501	100	Bacillus altitudinis
PK1	13-71	1246-1312	93	Brevundimonas sp.
	13-71	1339-1446	83	Alpha proteobacterium
	13-70	1333-1428	85	Rhodopseudomonas palustris
	13-71	1330-1424	84	Rhodopseudomonas sp.
	13-71	1284-1378	84	Bradyrhizobium sp.
	13-69	1342-1458	82	Afipia sp.
	13-69	1274-1370	84	Afipia massiliensis
PK4	15-74	983-1042	100	Acinetobacter baumannii
	15-74	1391-1450	100	Acinetobacter sp.
	15-74	590-649	100	Acinetobacter calcoaceticus
	15-74	624-683	100	Bacillus sp.
	15-74	1398-1457	99	Acinetobacter oleivorans
	15-74	1391-1450	99	Acinetobacter tandoii
	15-74	1392-1451	99	Acinetobacter gernerii
PK8	17-76	1387-1446	100	Burkholderia gladioli
	17-76	1364-1423	100	Burkholderia cepacia
	17-76	1484-1543	100	Burkholderia sp.

Lampiran 17. Data hasil BLAST sampel NICU

Sampel	Sekuen Sampel (awal-akhir)	Sekuen GenBank (awal-akhir)	Identifikasi (%)	Organisme
NP1	17-122	1385-1491	93	Burkholderia fungorum
	17-126	1451-1560	91	Burkholderia sp.
	17-126	1426-1535	91	Burkholderia vietnamiensis
	17-126	1395-1504	91	Burkholderia cenocepacia
	17-129	1370-1483	90	Burkholderia gladioli
NP2	15-123	1392-1500	100	Acinetobacter schindleri
	15-123	1347-1455	99	Acinetobacter sp.
	15-119	698-802	100	Acinetobacter calcoaceticus
	15-123	1395-1503	98	Alkanindiges illinoisensis
NP6	13-123	1404-1514	100	Bacillus thuringiensis
	13-122	1405-1514	100	Bacillus weihenstephanensis
	13-122	1407-1516	100	Bacillus sp.
	13-122	1404-1513	100	Bacillus cereus
	13-122	1405-1514	100	Bacillus pseudomycoides
	13-121	1402-1510	100	Bacillus pumilus
	13-121	1406-1514	100	Paenibacillus assamensis
	13-121	1405-1513	100	Bacillus anthracis
13-121	1416-1524	100	Bacillus bombysepticus	
NK4	20-127	1426-1532	97	Burkholderia vietnamiensis
	20-127	1395-1501	97	Burkholderia cenocepacia
	20-127	1389-1495	97	Burkholderia cepacia
	20-127	1323-1429	97	Burkholderia sp.
	20-127	1370-1476	97	Burkholderia gladioli
NK5	12-122	1382-1490	95	Achromatium oxaliferum
	12-122	1389-1497	94	Alcaligenes sp.
	12-122	1388-1496	94	Georgfuchsia toluolica
	12-122	788-896	94	Burkholderia sp.
	12-122	1382-1490	94	Denitratisoma oestradiolicum
NK6	15-123	983-1092	98	Acinetobacter baumannii
	15-122	1391-1499	98	Acinetobacter sp.
	15-122	590-698	98	Acinetobacter calcoaceticus
	15-121	624-731	98	Bacillus sp.
	15-122	1398-1506	97	Acinetobacter oleivorans
NK7	13-121	1392-1500	100	Acinetobacter schindleri
	13-121	1347-1455	99	Acinetobacter sp.
	13-117	698-802	100	Acinetobacter calcoaceticus
	13-121	1395-1503	98	Alkanindiges illinoisensis
NK9	11-122	1408-1519	89	Mesorhizobium sp.
	11-123	1280-1392	88	Brevundimonas sp.
	11-122	1287-1398	88	Brevundimonas aurantiaca
	11-122	1312-1423	88	Brevundimonas nasdae
	11-122	1314-1425	88	Brevundimonas vesicularis
	11-122	1325-1436	88	Pseudaminobacter salicylatoxidans
	11-122	1292-1403	88	Caulobacter sp.

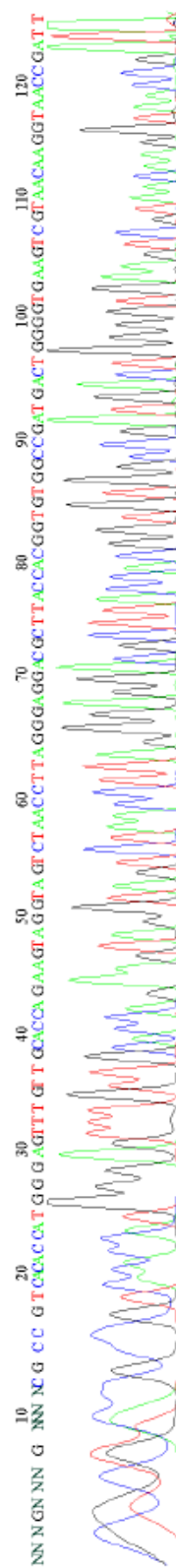
Lampiran 18. Hasil sekuensing sampel ICU

File: IP7\_UP\_forward.ab1 Run Ended: 2013/6/13 16:6:14 Signal G:2856 A:3794 C:3858 T:3273  
 Sample: IP7\_UP\_forward Lane: 50 Base spacing: -16.163063 129 bases in 16075 scans Page 1 of 2



GAN NN

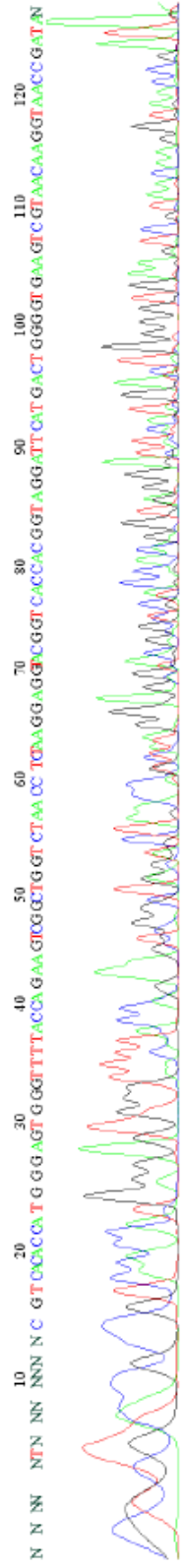
File: IK4\_UP\_forward.ab1 Run Ended: 2013/6/13 16:6:14 Signal G:2118 A:3431 C:2850 T:2090  
 Sample: IK4\_UP\_forward Lane: 79 Base spacing: -16.163063 127 bases in 16030 scans Page 1 of 2



N

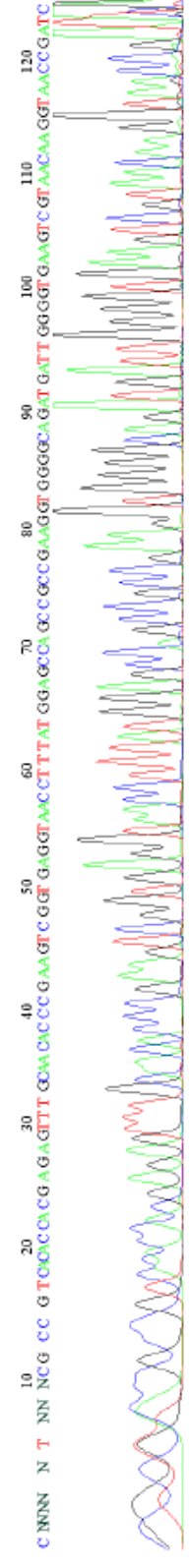
Lanjutan lampiran 18. Hasil sekuensing sampel ICU

File: IK6\_UP\_forward.ab1 Run Ended: 2013/0/13 16:6:14 Signal G:6283 A:7746 C:8364 T:5614  
 Sample: IK6\_UP\_forward Lane: 77 Base spacing: -16.163063 130 bases in 16063 scans Page 1 of 2



130  
A N A N N G A G

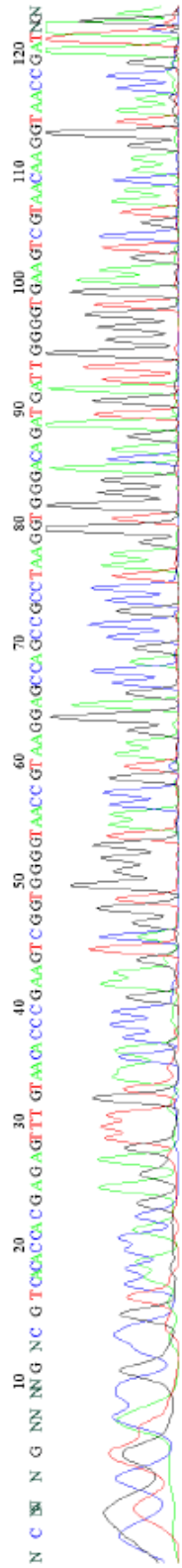
File: IK11\_UP\_forward.ab1 Run Ended: 2013/0/13 16:6:14 Signal G:3933 A:3864 C:5830 T:4133  
 Sample: IK11\_UP\_forward Lane: 75 Base spacing: -16.163063 130 bases in 16097 scans Page 1 of 2



130  
A N C C N

Lanjutan lampiran 18. Hasil sekuensing sampel ICU

File: IM3\_UP\_forward.ab1 Run Ended: 2013/01/13 16:06:14 Signal G:4462 A:5915 C:6218 T:4255  
Sample: IM3\_UP\_forward Lane: 73 Base spacing: -16.163063 130 bases in 16063 scans Page 1 of 2

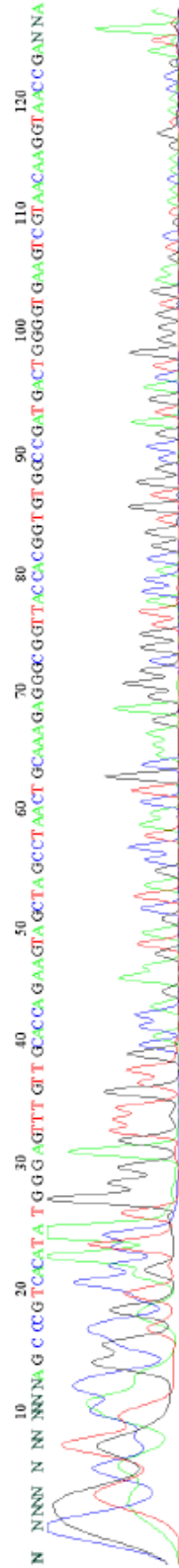


130  
N NN NN



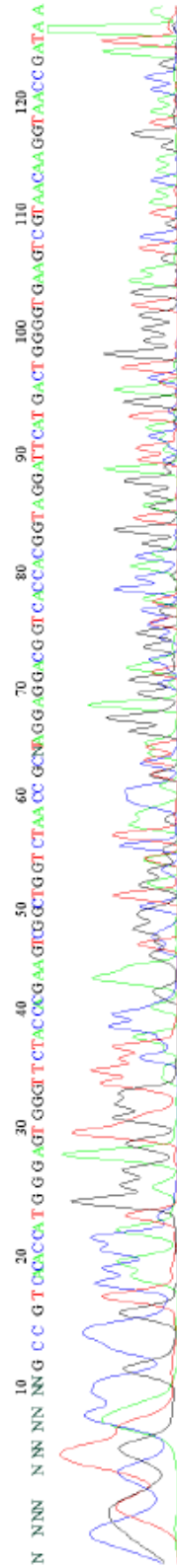
Lampiran 19. Hasil sekuensing sampel CVCU

File: CP4\_UP\_forward.ab1 Run Ended: 2013/01/13 16:06:14 Signal G:3082 A:3870 C:3941 T:2800  
 Sample: CP4\_UP\_forward Lane: 53 Base spacing: -16.103003 133 bases in 16120 scans Page 1 of 2



130  
N N N C N

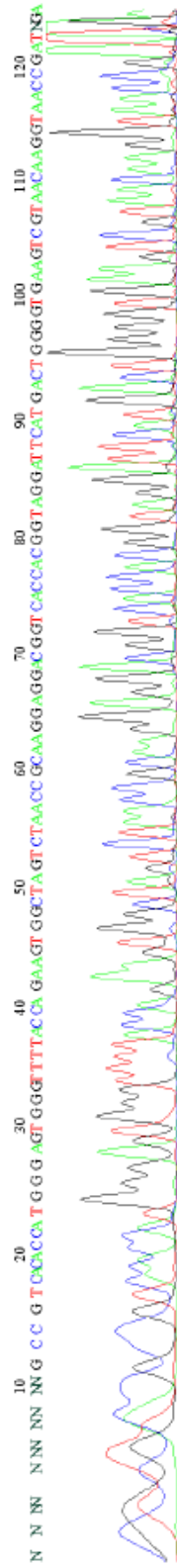
File: CP5\_UP\_forward.ab1 Run Ended: 2013/01/13 16:06:14 Signal G:2449 A:2983 C:3172 T:2256  
 Sample: CP5\_UP\_forward Lane: 51 Base spacing: -16.103003 132 bases in 16147 scans Page 1 of 2



130  
N A G N

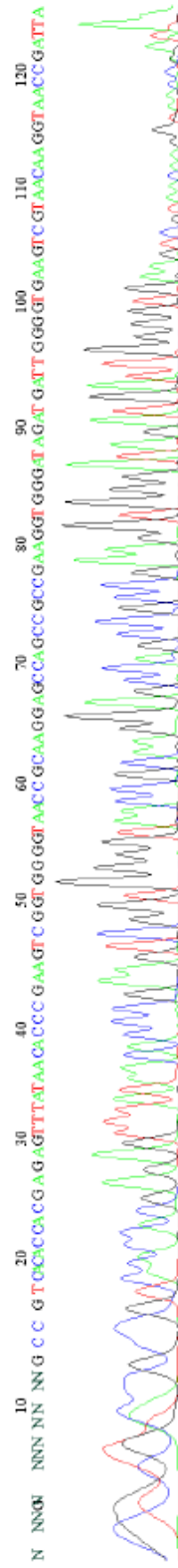
Lanjutan lampiran 19. Hasil sekuensing sampel CVCU

File: CP14\_UP\_forward.ab1 Run Ended: 2013/06/13 16:06:14 Signal G:3380 A:4803 C:4460 T:3148  
 Sample: CP14\_UP\_forward Lane: 49 Base spacing: -16.103003 133 bases in 10007 scans Page 1 of 2



130  
N NA NCNN

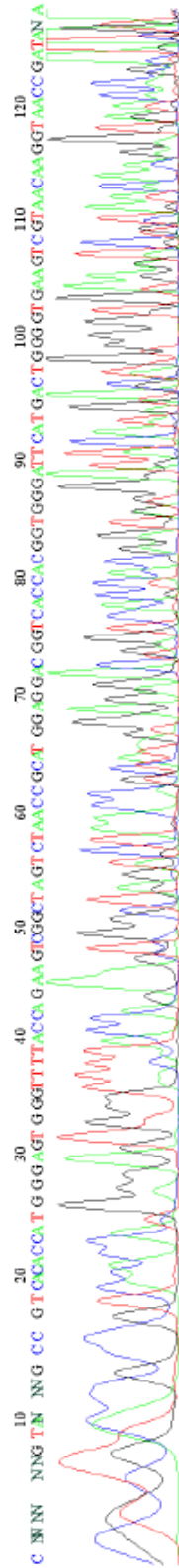
File: CP16\_UP\_forward.ab1 Run Ended: 2013/06/13 16:06:14 Signal G:2012 A:2972 C:3201 T:2017  
 Sample: CP16\_UP\_forward Lane: 04 Base spacing: -16.103003 128 bases in 10041 scans Page 1 of 2



GN

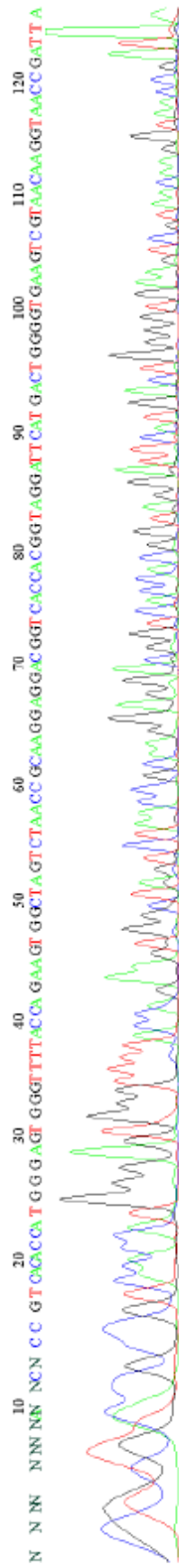
Lanjutan lampiran 19. Hasil sekuensing sampel CVCU

File: CK3\_UP\_forward.ab1 Run Ended: 2013/0/13 16:06:14 Signal G:3508 A:4823 C:4848 T:4126  
Sample: CK3\_UP\_forward Lane: 59 Base spacing: -16.163063 137 bases in 16143 scans Page 1 of 2



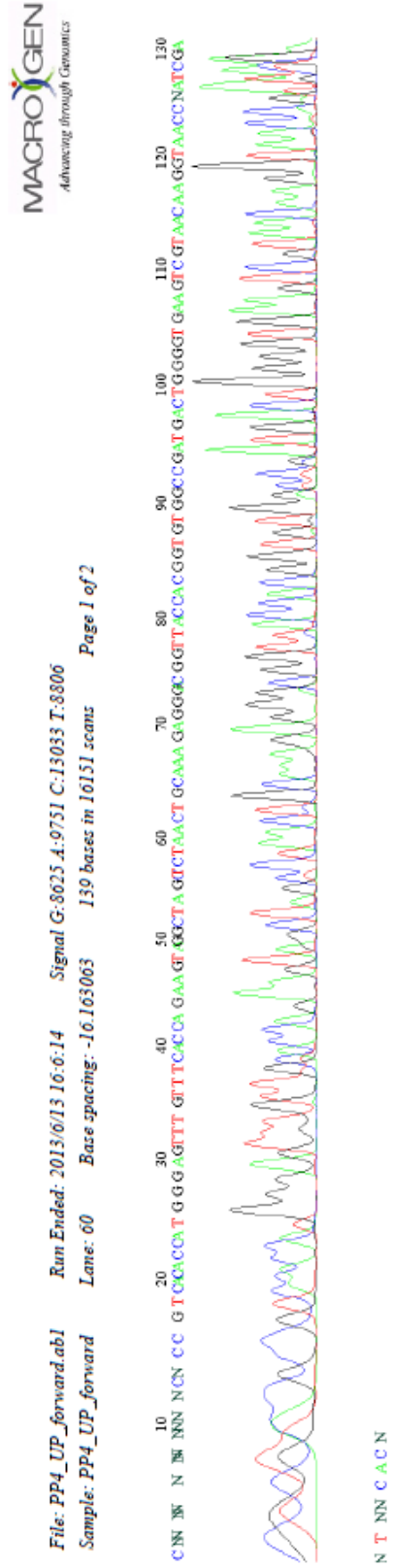
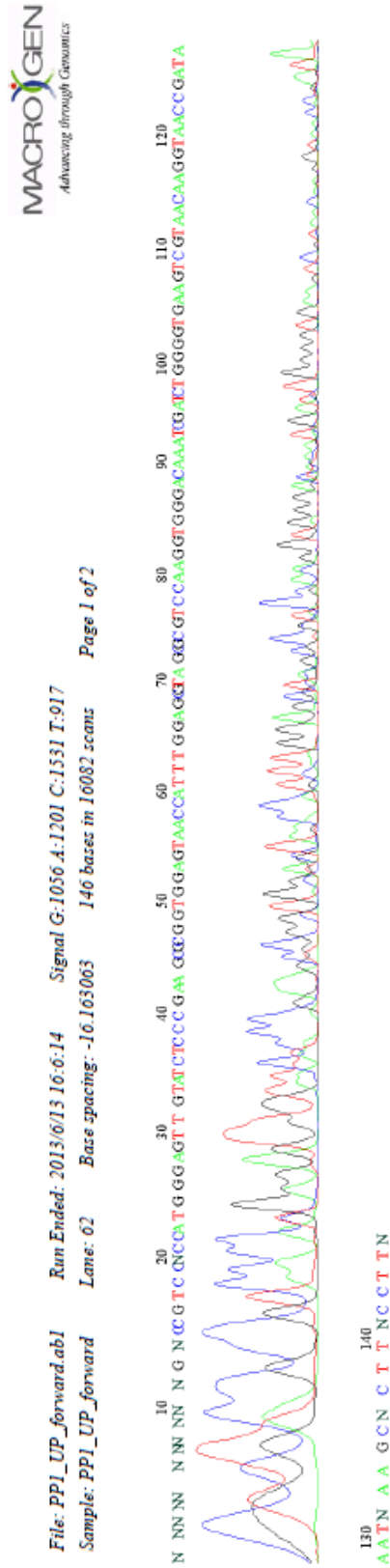
130  
N A N G C A A N

File: CK6\_UP\_forward.ab1 Run Ended: 2013/0/13 16:06:14 Signal G:2308 A:2962 C:3149 T:2198  
Sample: CK6\_UP\_forward Lane: 57 Base spacing: -16.163063 130 bases in 16163 scans Page 1 of 2



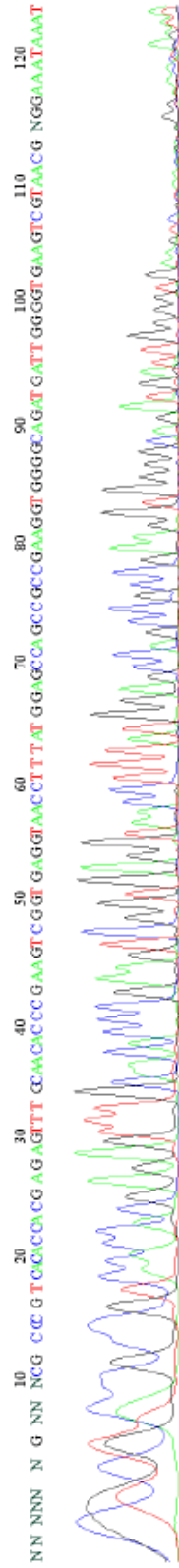
130  
G A C G

Lampiran 20. Hasil sekuensing sampel PICU



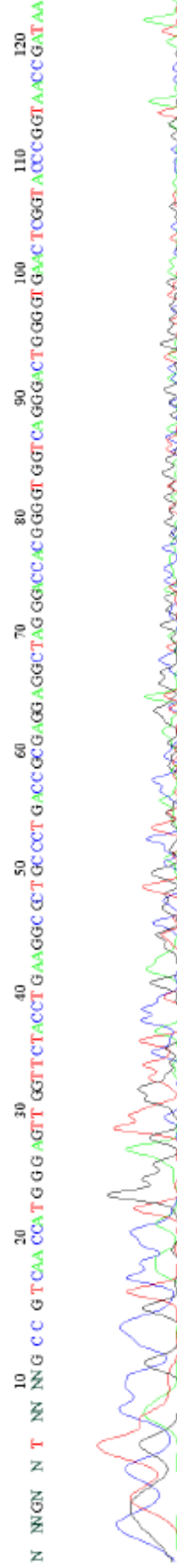
Lanjutan lampiran 20. Hasil sekuensing sampel PICU

File: PP7\_UP\_forward.ab1 Run Ended: 2013/06/13 16:06:14 Signal G:1370 A:1450 C:1790 T:1059  
 Sample: PP7\_UP\_forward Lane: 58 Base spacing: -16.163063 131 bases in 16097 scans Page 1 of 2



130  
AA C C T N

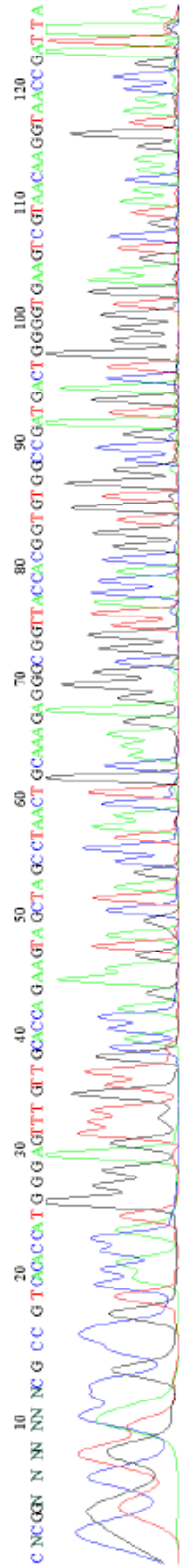
File: PK1\_UP\_forward.ab1 Run Ended: 2013/06/13 16:06:14 Signal G:1902 A:2152 C:2893 T:1613  
 Sample: PK1\_UP\_forward Lane: 56 Base spacing: -16.163063 126 bases in 16155 scans Page 1 of 2



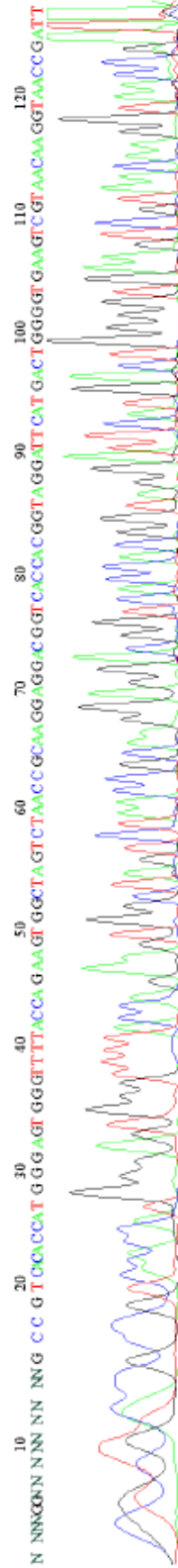
AA

Lanjutan lampiran 20. Hasil sekuensing sampel PICU

File: PK4\_UP\_forward.ab1 Run Ended: 2013/06/13 16:06:14 Signal G:2313 A:2899 C:3042 T:2141  
 Sample: PK4\_UP\_forward Lane: 54 Base spacing: -16.163063 134 bases in 16159 scans Page 1 of 2

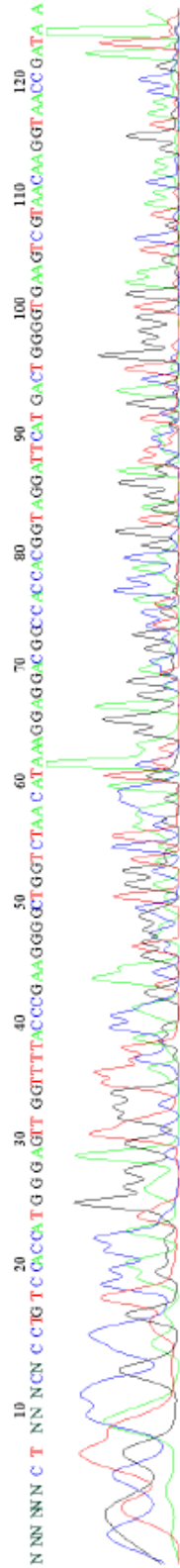


File: PK8\_UP\_forward.ab1 Run Ended: 2013/06/13 16:06:14 Signal G:1451 A:2664 C:1853 T:1426  
 Sample: PK8\_UP\_forward Lane: 52 Base spacing: -16.163063 133 bases in 16060 scans Page 1 of 2



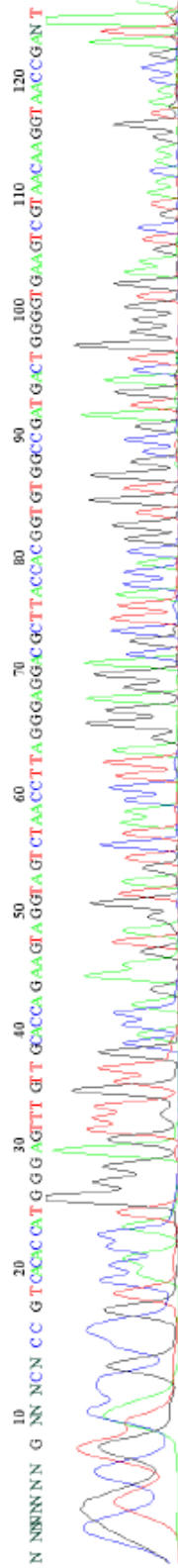
Lampiran 21. Hasil sekuensing sampel NICU

File: NP1\_UP\_forward.ab1 Run Ended: 2013/06/13 16:06:14 Signal G:1654 A:2210 C:2176 T:1616  
 Sample: NP1\_UP\_forward Lane: 34 Base spacing: -16.163063 130 bases in 16075 scans Page 1 of 2



130  
C A C N

File: NP2\_UP\_forward.ab1 Run Ended: 2013/06/13 16:06:14 Signal G:1886 A:2311 C:2305 T:1613  
 Sample: NP2\_UP\_forward Lane: 63 Base spacing: -16.163063 128 bases in 16159 scans Page 1 of 2

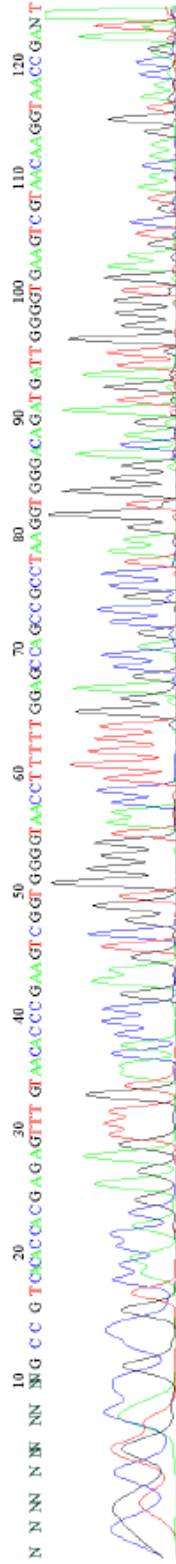


A N

Lanjutan lampiran 21. Hasil sekuensing sampel NICU

File: NP6\_UP\_forward.ab1 Run Ended: 2013/6/13 16:06:14 Signal G:2580 A:3160 C:3505 T:2508

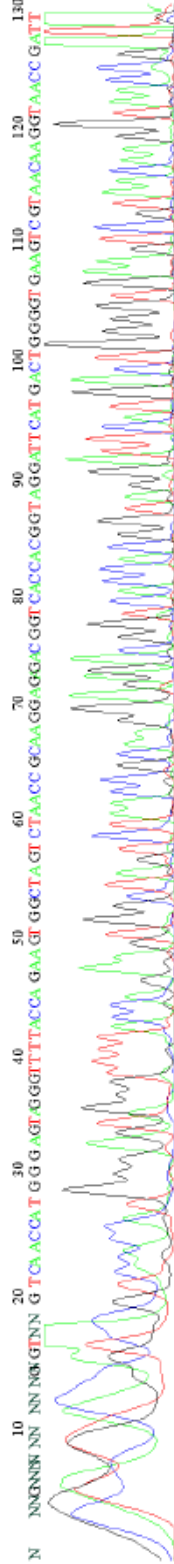
Sample: NP6\_UP\_forward Lane: 61 Base spacing: -16.163063 130 bases in 16063 scans Page 1 of 2



130  
N N N N N

File: NK4\_UP\_forward.ab1 Run Ended: 2013/6/13 16:06:14 Signal G:1111 A:2154 C:1437 T:1100

Sample: NK4\_UP\_forward Lane: 44 Base spacing: -16.163063 138 bases in 16182 scans Page 1 of 2



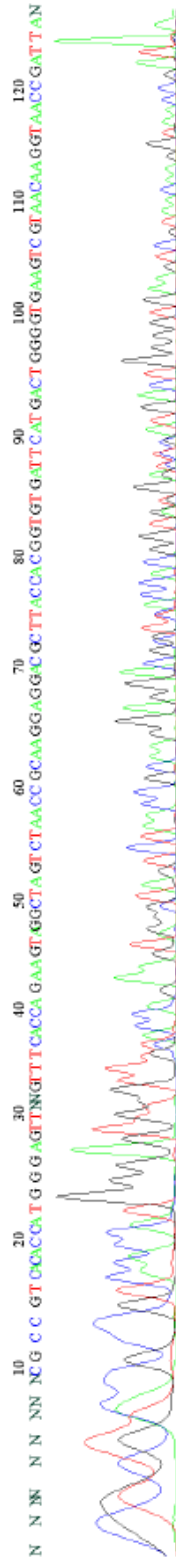
NN C A C G GN



Lanjutan Lampiran 21. Hasil sekuensing sampel NICU

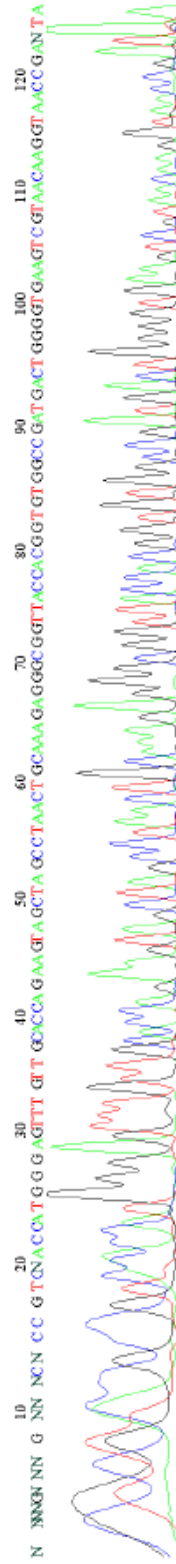
File: NK5\_UP\_forward.ab1 Run Ended: 2013/0/13 16:06:14 Signal G:4565 A:4076 C:6078 T:4078

Sample: NK5\_UP\_forward Lane: 42 Base spacing: -16.163063 127 bases in 16239 scans Page 1 of 2



File: NK6\_UP\_forward.ab1 Run Ended: 2013/0/13 16:06:14 Signal G:1210 A:1389 C:1563 T:1117

Sample: NK6\_UP\_forward Lane: 40 Base spacing: -16.163063 127 bases in 16179 scans Page 1 of 2

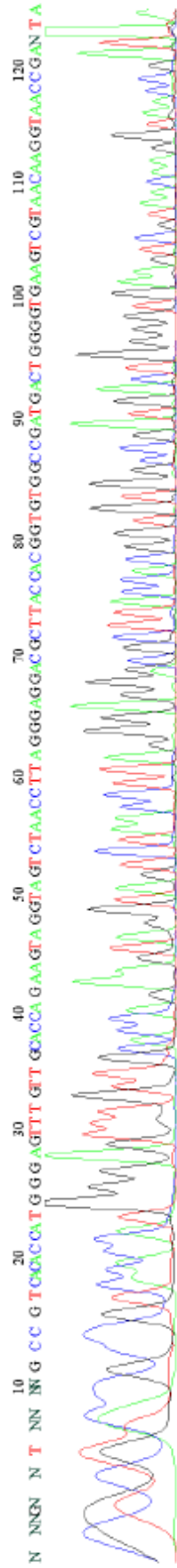


N

Lanjutan Lampiran 21. Hasil sekuensing sampel NICU

File: NK7\_UP\_forward.ab1 Run Ended: 2013/6/13 16:6:14 Signal G:2279 A:2510 C:2688 T:2016

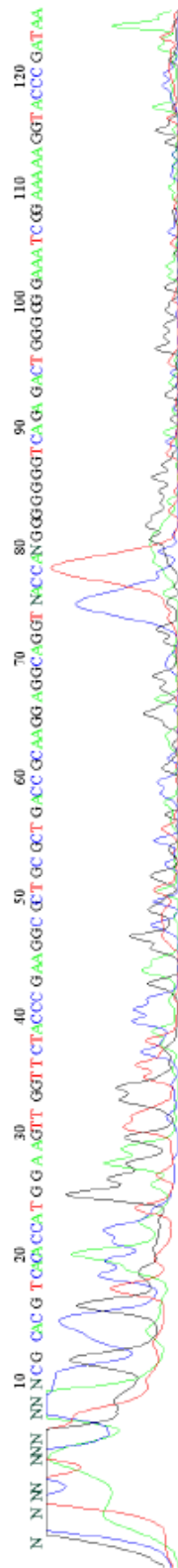
Sample: NK7\_UP\_forward Lane: 38 Base spacing: -16.163063 132 bases in 16182 scans Page 1 of 2



130  
G N N N C A N

File: NK9\_UP\_forward.ab1 Run Ended: 2013/6/13 16:6:14 Signal G:626 A:728 C:801 T:536

Sample: NK9\_UP\_forward Lane: 36 Base spacing: -16.163063 141 bases in 16143 scans Page 1 of 2



130  
N N C T T G N G G T G G G A