

## DAFTAR PUSTAKA

- Aswad, Sabrianto. 2010. *Relokasi Gempa Vulkanik Kompleks Gunung Guntur Menggunakan Algoritma Double Difference*. Karya Tulis. Institut Teknologi Bandung. Bandung.
- Baeda, Yasir. A. 2011. *Seismic and Tsunami Hazard Potential in Sulawesi Island, Indonesia*. Journal of International Development and Cooperation, Vol. 17, No. 1, pp. 17-30.
- Daryono. 2011. *Tatanan Tektonik dan Sejarah Kegempaan Palu, Sulawesi Tengah*. Artikel Kebumihan Badan Meteorologi Klimatologi dan Geofisika.
- Grandis, Hendra. 2009. *Pengantar Pemodelan Inversi Geofisika*. Himpunan Ahli Geofisika Indonesia. Jakarta.
- Gomberg, J., Shedlock, K. 1990. *The Effect of S-Wave Arrival Times on The Accuracy of Hypocenter Estimation*. Bulletin of Seismological Society of America, Vol. 80, No. 6, pp. 1605-1628.
- Hamilton. 1979. *Tectonics of the Indonesian region*. United States Geological Survey Professional Paper 1078. Washington.
- Handriyadi, Dedy. 2009. *Analisis Perbandingan Clustering-Based, Distance-Based, dan Density-Based dalam Mendeteksi Outlier*. Seminar Nasional Aplikasi Teknologi Informasi, 101-108. Yogyakarta.
- Havskov, Jeans., Bormann, P. 2011. *Seismic Source Location*. Version 2 DOI: 10.2312/GFZ.NMSOP-2\_IS\_11.1.
- Hurukawa, N. 1992. *Subducting Oceanic Crust of Philippine Sea and Pacific Plates and Weak Zone Normal Compression in Kanto District, Japan*. Geophys. J. Int. 109, 639-652.
- Hurukawa, N. 2008. *Practical Analysis of Local Earthquakes*. International Institute of Seismologi and Earthquake Engineering, Building Research Institute, Tsukuba, Japan.

- Hurukawa, N. 2011. *Hypocenter Determination and Joint Hypocenter Determination*. International Institute of Seismology and Earthquake Engineering (IISEE), Building Research Institute, Tsukuba, Japan.
- Irsyam, M., dkk. 2010. *Summary of Study: Development of Seismic Hazard Maps of Indonesia for Revision of Hazard Map in SNI 03-1726-2002*. Bandung.
- Kaharuddin, H., Nurhamdan. 2011. *Perkembangan Tektonik dan Implikasinya Terhadap Potensi Gempa dan Tsunami di Kawasan Pulau Sulawesi*. Proceedings JCM Makassar.
- Klimes, L. 1996. *Arrival Time Residuals and Hypocenter Mislocation*. PAGEOPH, Vol. 148, Nos. ½. Basel.
- Maung, Phyo Maung. 2009. *Relocation of Earthquakes in Myanmar by MJHD Method: Aftershocks of Large Earthquakes and Seismicity Along the Sagaing Fault*. IISEE, Tsukuba, Ibaraki, Japan.
- Pujol, J. 2000. *Joint Event Location – The JHD Technique and Applications to Data From Local Seismic Networks*. Advances in Seismic Location, 163-204.
- Puspito, N. 1996. *Struktur Kecepatan Gelombang Gempa dan Koreksi Stasiun Seismologi di Indonesia*. JMS Vol. 1. No. 2.
- Putri, Yanuarsih. 2012. *Relokasi Gempabumi Utama dan Gempabumi Susulan Menggunakan Metode MJHD (Studi Kasus Gempabumi Mentawai 25 Oktober 2010)*. Tugas Akhir Program Studi Fisika, UI.
- Rachni, Anna. 2012. *Penentuan Hiposenter Gempa Mikro dengan Metode Single Event Determination, Joint Hypocenter Determination, dan Double Difference pada Lapangan Panas Bumi “Lamda”*. Tugas Akhir Universitas Pendidikan Indonesia. Bandung.
- Sahara, David. 2009. *Pengembangan dan Aplikasi Metode Double Differential dengan Analisis Multiplet Clustering untuk Penentuan Lokasi Hiposenter yang Akurat: Studi Kasus Gunung Kelud*. Tugas Akhir Program Studi Teknik Geofisika, ITB. Bandung.

- Tanioka, Y., Yudhicara. 2008. *Teleseismic Body Wave Data Analysis for The May 4, 2000, Sulawesi Earthquake*. Jurnal Geoplika Vol. 3, No. 2, hal. 71-80.
- Waldhauser, F., Ellsworth, W. L. 2000. *A double-difference earthquake location algorithm: Method and application to the Northern Hayward fault, California*, Bull. Seismol. Soc. Am. 90, 1353–1368.
- Waldhauser, F. 2001. *HypoDD: A computer program to compute double-difference earthquake location*, U. S. Geol. Surv. Openfile report, 01-113, Menlo Park, California.
- Watkinson, I., Hall, R. 2011. *The Palu-Koro and Matano Faults, Sulawesi, Indonesia: Evolution of an Active Strike-Slip Fault System*. Geophysical Research Abstract Vol. 13, EGU2011-8270. United Kingdom.
- Villeneuve, M., Gunawan, W. 2002. *Geology of the central Sulawesi belt (eastern Indonesia): constraints for geodynamic models*. Int J Earth Sci (Geol Rundsch) 91: 524-537.

# LAMPIRAN

## Lampiran A

### Parameter Masukan HypoDD

Tabel di bawah merupakan parameter masukan yang digunakan dalam program Ph2dt dan HypoDD.

#### A.1 Parameter Masukan Ph2dt

Parameter	Nilai Masukan
MAXDIST	1000 km
MAXSEP	10 km, 30 km, 60 km, 100 km
MAXNGH	8
MINLINK	8
MINOBS	8
MAXOBS	20

#### A.2 Parameter Masukan HypoDD

Parameter	Nilai Masukan
Tipe Data	Katalog
Tipe Phase	P
DIST	1000 km
OBSCT	8
Jumlah Iterasi	Bervariasi
Pembobotan Gelombang P	1
WDCT	10 km, 30 km, 60 km, 1000 km
Nilai Dumping	60
Perbandingan Vp/Vs	1.73 km/s

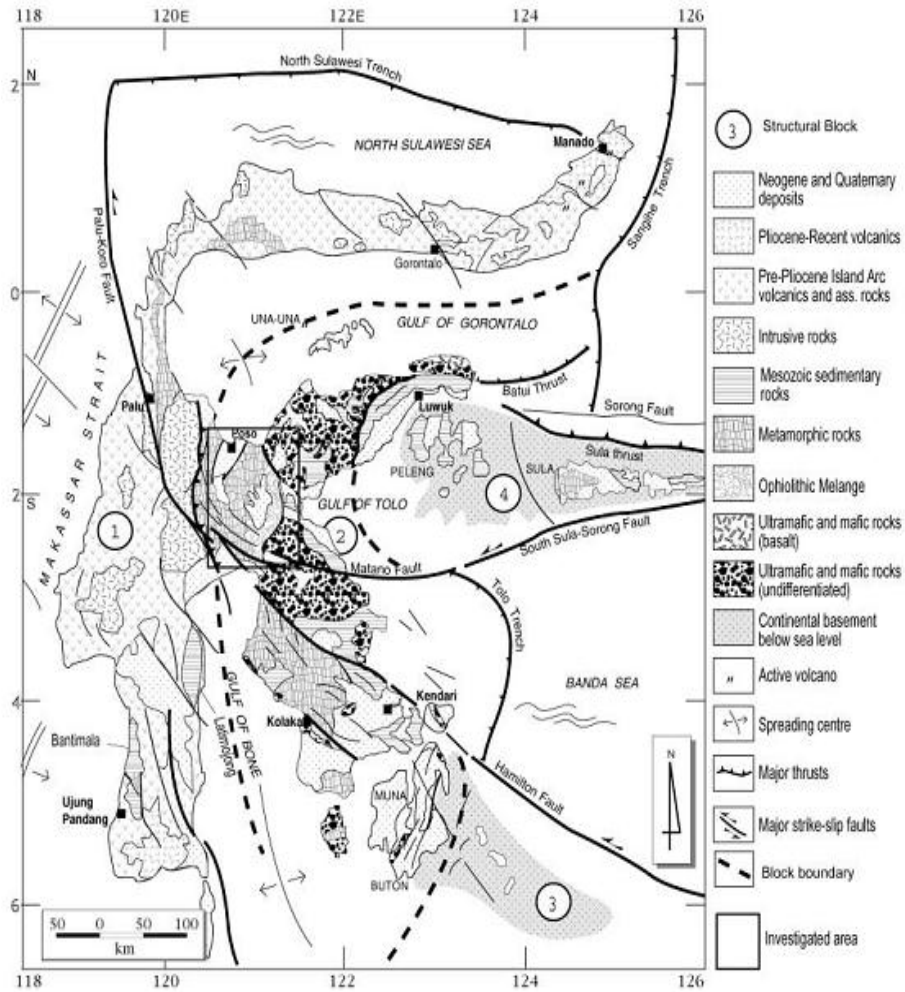
## Lampiran B

Data stasiun yang digunakan dalam relokasi

No	Stasiun	Bujur	Lintang	Elevasi
1	APSI	121.64867	-0.91078	153.000
2	BBKI	114.84110	-3.46250	109.880
3	BBSI	122.56946	-5.48845	96.000
4	BKB	116.90482	-1.10732	111.000
5	BKSI	120.12244	-5.32184	608.000
6	BNSI	120.10652	-4.40052	252.000
7	BSSI	120.49040	-6.14280	114.130
8	GTOI	122.87000	0.76280	313.320
9	KAPI	119.75169	-5.01419	30.000
10	KBKI	116.16680	-3.29950	65.000
11	KDI	122.61926	-3.95743	55.000
12	KKM	116.21469	6.04431	830.000
13	KKSI	121.65125	-4.17172	92.000
14	KMSI	123.89067	0.57454	234.000
15	KRAI	128.39473	-3.31836	126.000
16	LBFI	119.89000	-8.48000	123.000
17	LBMI	127.50082	-0.63789	121.000
18	LUWI	122.77164	-1.04181	6.000
19	MJSI	118.98030	-3.55030	97.000
20	MMSI	118.90900	-2.68920	221.250
21	MPSI	119.89800	0.33740	174.000
22	MRSI	121.94059	0.47708	98.000
23	MTKI	114.89592	-0.94183	107.000
24	NLAI	127.09982	-3.23897	100.000
25	PCI	119.83665	-0.90548	150.000
26	PMSI	118.91494	-3.50085	301.000
27	PSI	98.92400	2.80100	987.000
28	SANI	125.98810	-2.04970	30.000
29	SPSI	119.76908	-3.96460	146.000
30	STKI	111.47720	0.06560	88.000
31	SWI	131.25980	-0.86300	0.000
32	TOLI	120.79446	1.12140	7.000
33	TTSI	119.81897	-3.04508	958.000

## Lampiran C

Peta sistem seismik Sulawesi (Villeneuve, 2002)



### Keterangan

1. Lengan Barat Sulawesi
2. Kolonodale Block
3. Tukang Besi Platform (Lucipara – Timor Block)
4. Banggai Sula Block

## Lampiran D

Tabel model kecepatan IASP 91

**Table 2.2 The IASP91 velocity model**

Depth (km)	Radius (km)	$V_p$ (km/s)	$V_s$ (km/s)
6371.00	0.	11.2409	3.5645
6271.00	100.000	11.2399	3.5637
6171.00	200.000	11.2369	3.5611
6071.00	300.000	11.2319	3.5569
5971.00	400.000	11.2248	3.5509
5871.00	500.000	11.2157	3.5433
5771.00	600.000	11.2046	3.5339
5671.00	700.000	11.1915	3.5229
5571.00	800.000	11.1763	3.5101
5471.00	900.000	11.1592	3.4956
5371.00	1000.00	11.1400	3.4795
5271.00	1100.00	11.1188	3.4616
5171.00	1200.00	11.0956	3.4421
5153.90	1217.10	11.0914	3.4385
5153.90	1217.10	10.2578	0.
5071.00	1300.00	10.2364	0.
4971.00	1400.00	10.2044	0.
4871.00	1500.00	10.1657	0.
4771.00	1600.00	10.1203	0.
4671.00	1700.00	10.0681	0.
4571.00	1800.00	10.0092	0.
4471.00	1900.00	9.9435	0.
4371.00	2000.00	9.8711	0.
4271.00	2100.00	9.7920	0.
4171.00	2200.00	9.7062	0.
4071.00	2300.00	9.6136	0.
3971.00	2400.00	9.5142	0.
3871.00	2500.00	9.4082	0.
3771.00	2600.00	9.2954	0.
3671.00	2700.00	9.1758	0.
3571.00	2800.00	9.0496	0.
3471.00	2900.00	8.9166	0.
3371.00	3000.00	8.7768	0.
3271.00	3100.00	8.6303	0.
3171.00	3200.00	8.4771	0.
3071.00	3300.00	8.3171	0.
2971.00	3400.00	8.1504	0.
2889.00	3482.00	8.0087	0.
2889.00	3482.00	13.6908	7.3015
2871.00	3500.00	13.6866	7.2970
2771.00	3600.00	13.6636	7.2722
2740.00	3631.00	13.6564	7.2645
2740.00	3631.00	13.6564	7.2645
2671.00	3700.00	13.5725	7.2302
2571.00	3800.00	13.4531	7.1819
2471.00	3900.00	13.3359	7.1348



**Table 2.2 (continued)**

Depth (km)	Radius (km)	$V_p$ (km/s)	$V_s$ (km/s)
2371.00	4000.00	13.2203	7.0888
2271.00	4100.00	13.1055	7.0434
2171.00	4200.00	12.9911	6.9983
2071.00	4300.00	12.8764	6.9532
1971.00	4400.00	12.7607	6.9078
1871.00	4500.00	12.6435	6.8617
1771.00	4600.00	12.5241	6.8147
1671.00	4700.00	12.4020	6.7663
1571.00	4800.00	12.2764	6.7163
1471.00	4900.00	12.1469	6.6643
1371.00	5000.00	12.0127	6.6101
1271.00	5100.00	11.8732	6.5532
1171.00	5200.00	11.7279	6.4933
1071.00	5300.00	11.5761	6.4302
971.00	5400.00	11.4172	6.3635
871.00	5500.00	11.2506	6.2929
771.00	5600.00	11.0756	6.2180
760.00	5611.00	11.0558	6.2095
760.00	5611.00	11.0558	6.2095
671.00	5700.00	10.8192	5.9785
660.00	5711.00	10.7900	5.9500
660.00	5711.00	10.2000	5.6000
571.00	5800.00	9.9010	5.4113
471.00	5900.00	9.5650	5.1993
410.00	5961.00	9.3600	5.0700
410.00	5961.00	9.0300	4.8700
371.00	6000.00	8.8877	4.8021
271.00	6100.00	8.5227	4.6281
210.00	6161.00	8.3000	4.5220
210.00	6161.00	8.3000	4.5180
171.00	6200.00	8.1917	4.5102
120.00	6251.00	8.0500	4.5000
120.00	6251.00	8.0500	4.5000
71.00	6300.00	8.0442	4.4827
35.00	6336.00	8.0400	4.4700
35.00	6336.00	6.5000	3.7500
20.00	6351.00	6.5000	3.7500
20.00	6351.00	5.8000	3.3600
0.	6371.00	5.8000	3.3600

