

DAFTAR PUSTAKA

- Achmad, M., T. Arlianti dan C. Azmi. 2011. *Panduan Lengkap Jamur*. Penebar Swadaya. Jakarta.
- Anita, S. H., T.Fajriutami, Fitria, R. A. Ermawar, D. H. Y. Yanto, E.Hermiati. 2009. *Perlakuan awal bagasse menggunakan kultur tunggal dan kultur campuran jamur pelapuk putih *Trametes versicolor* dan *Pleurotus ostreatus**. Dipresentasikan di Seminar Nasional “Biomass Utilization for Alternative Energy and Chemicals”. Universitas Parahyangan. Bandung.
- Anonim. 2012. *Jerami Padi*. [https:// epetani.deptan.go.id/](https://epetani.deptan.go.id/). Diakses pada tanggal 24 September 2012.
- Aziz A.A., M. Husin and A. Mokhtar. 2002. Preparation of cellulose from oil palm empty fruit bunches via ethanol digestion: effect of acid and alkali catalysts. *Journal of Oil Palm Research*. 14 (1):9-14.
- Blanchette R.A. 1995. Degradation of lignocellulose complex in wood. *Can. J. Bot.* 73 (Suppl. 1): S999-S1010.
- Boyle C.D., B.R. Kropp and I.D. Reid. 1992. Solubilization and mineralization of lignin by white rot fungi. *Appl. Environ. Microbiol.* 58:3217-3224.
- BPS. 2009. http://www.bps.go.id/tnmn_pgn.php. Diakses pada tanggal 24 September 2012.
- Brauns, F.E. 1952. *The Chemistry of Lignin*. Academic Press. New York.
- Chahal P.S. and D.S. Chahal. 1998. Lignocellulosic Waste: Biological Conversion. In: Martin, A.M. [eds]. *Bioconversion of Waste Materials to Industrial Products*. Ed ke-2. London: Blackie Academic & Professional. pp. 376-422.
- Chang S.T. and P.G. Miles. 1989. *Edible Mushrooms and Their Cultivation*. CRC Press Inc. Florida.
- Chesson, A and C.W. Forssberg. 1988. Polysaccharide Degradation by Rumen Mikroflora. In P>N. Hobson Ed. *The Rumen Microbial Ecosystem. Elsevier Applied Science*. London.
- Crawford D.L., A.L. Pometto III and R.L. Crawford. 1983. Lignin degradation by *Streptomyces viridosporus*: Isolation and characterization of new polymeric lignin degradation intermediate. *Appl. Environ. Microbiol.* 45:898-904.

- Daniel G. and T. Nilsson. 1998. Developments in the study of soft rot and bacterial decay. In: Bruce A. and J.W Palfreyman [eds]. Forest Products Biotechnology. *Great Britain*: Taylor & Francis pp. 37-62.
- Dey S., T.K. Maiti and B.C. Bhattacharyya. 1994. Production of some extracellular enzymes by a lignin peroxidase-producing brown rot fungus, *Polyporus ostreiformis*, and its comparative abilities for lignin degradation and dye decolorization. *Appl. Environ. Microbiol.* 60:4216-4218.
- Dwyana, Z., dan Gobel, R. B., 2011. *Penuntun Praktikum Mikrobiologi Umum*. Laboratorium Mikrobiologi, Jurusan Biologi, Fakultas Matematika dan Ilmu Pengetahuan Alam, Universitas Hasanuddin, Makassar.
- Ekawati, I. 2003. Pengaruh Pemberian Inokulum Terhadap Kecepatan Pengomposan Jerami Padi. *Tropika*. 11(2):144.
- Ermawar, R.A., D.H.Y.Yanto, Fitria, and E.Hermiati. 2006. Lignin degradation content in rice straw pre-treated by white-rot fungi. *Jurnal Widya Riset*. 9 (3): 197-202.
- Eun J.S., K.A. Beauchemin, S.H Hong, and M.W. Bauer. 2006. Exogenous enzymes added to untreated or ammoniated rice straw : Effect on in vitro fermentation characteristic and degradability. *J. Anim. Sci. and Tech.* 131 : 86-101.
- Fengel, D and G. Wegener. 1995. *Kayu : Kimia, Ultrastruktur, Reaksi-reaksi*. (Terjemahan). Gajah Mada Univ. Peress. Yogyakarta.
- Gaman, P.M. dan K.B. Sherrington. 1992. *Pengantar ilmu Pangan, Nutrisi dan Mikrobiologi*. Edisi 2. Gajah Mada University Press. Yogyakarta.
- Grigoriou A.H. 2000. Straw-wood composites bonded with various adhesive systems. *Wood Science and Technology*.34(4):355-365.
- Hadinah, S. 2007. *Isolasi Bakteri dan Jamur Selulolitik sebagai Inokulum Untuk Meningkatkan Jerami Padi dan Produktivitas Domba* [Disertasi] Pascasarjana Universitas Airlangga, Surabaya.
- Hammel K.E. 1997. Fungal Degradation of Lignin. Di Dalam: Cadisch G, Giller KE, Editor. *Driven By Nature: Plant Litter Quality And Decompostion*. London: CAB International. pp. 33-45.
- Hataka, A. 2001. Biodegradation of lignin. In: Steinbüchel A. [ed] *Biopolimers*. Vol 1: *Lignin, Humic Substances and Coal* Germany: Wiley VCH. pp. 129 – 180.
- Hatfield, R.D. 1989. Structural Polysaccharides in Forage and Their Degradability. *Agron*, J. 81.

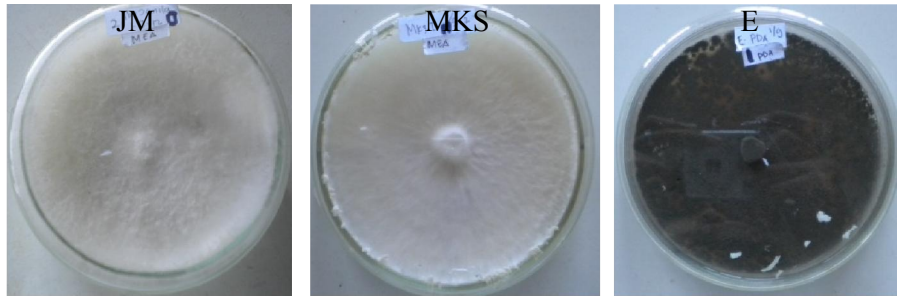
- Hendritomo, H.I. 2002. *Biologi Jamur Pangan*. Pusat Pengkajian dan Penerapan Teknologi Bio Industri. Jakarta.
- Howard R.L., P. Masoko and E. Abotsi. 2003a. Enzymeactivity of *Phanerochaete chrysosporium* cellobiohydrolase (CBHI.1) expressed as a heterologous protein from *Escherichia coli*. *African J. Biotechnol.* Vol. 2.No. 9. pp 296-300.
- Jayanti, C. M. T., dan Aprilia B. 2010, *Pabrik Pulp dari Jerami Padi dengan Proses Biochemical Pulping* [Tugas Akhir], <http://digilib.its.ac.id/public/ITS-NonDegree-12799-pabrik-pulp-dari-jerami-padi-dengan-proses-biochemical-pulping.pdf>, Diakses pada tanggal 24 September 2012.
- Jung, H.G. 1989. Forage Lignins and Their Effects on Feed Digestibility. *Agron. J.* 81.
- Kaal, E.E.J., J.A. Field and T.W. Joice. 1995. Increasing Ligninolytic Enzyme Activities in Several White Rot Basiddiomycetess by Nitrogen Sufficient Media. *Biosource Technology* 53.
- Kirk T.K. and R.L. Farrell. 1987. Enzymatic “combustion”: the microbial degradation of lignin. *Ann. Rev. Microbiol.* 41:465-505.
- Komar, A. 1984. *Teknologi Pengolahan Jerami sebagai Makanan Ternak*. Cetakan pertama. Yayasan Dian Grahita. Bandung.
- Lubis, D. A. 1992. *Ilmu Makanan Ternak*. P.T. Pembangunan. Jakarta.
- Lynd L.R., P.J. Weimer, W.H. van Zyl and I.S. Pretorius. 2002. Microbial Cellulose Utilization: Fundamentals and Biotechnology. *Microbiol. Mol. Biol. Rev.*66(3):506-577.
- Morrison, F.B. 1986. *Feed and Feeding*. 21th Ed. The Iowa State University Press, Iowa.
- Murbandono, L. 2006. *Membuat Kompos*. Penebar Swadaya. Jakarta.
- Nasrul, dan T.Maimun. 2009. Pengaruh Penambahan Jamur Pelapuk Putih (White Rot Fungi) pada Proses Pengomposan Tandan Kosong Kelapa Sawit. *Jurnal Rekayasa Kimia dan Lingkungan*.7(2):194-199.
- Orth A.B., D.J. Royse, M. Tien. 1993. Ubiquity of lignin-degrading peroxidases among various wood-degrading fungi. *Appl Environ Microbiol* 59:4017-4023.

- Perez J., J. Munoz-Dorado, T. de la Rubia and J. Martinez. 2002. Biodegradation and biological treatments of cellulose, hemicellulose and lignin: an overview. *Int. Microbiol.* 5:53-63.
- Sanchez, C. 2009. Lignocellulosic Residues : Biodegradation and Bioconversion by Fungi. *Biotechnology Advances* 27.
- Saparrat, M.C.N., F. Guillen, A.M. Arambarri, A.T. Martinez and M.J Martinez. 2002. Induction, Isolation and characterization of Two Laccases from The White Rot Basidiomycete *Coriolopsis rigida*. *Applied and Environmental Microbiology* 68.
- Sigit, A. M. 2008. *Pola Aktivitas Enzim Lignolitik Jamur Tiram Pleurotus ostreatus Pada Media Sludge Industri Kertas*. [Skripsi]. Program Studi Biokimia, Fakultas Matematika dan Ilmu Pengetahuan Alam, Institut Pertanian Bogor. Bogor.
- Sjöberg, G. 2003. *Lignin degradation: Long-term effects of nitrogen addition on decomposition of forest soil organic matter*. [disertasi]. Uppsala: Dep. Soil Sci. Swedish University of Agricultural Sciences.
- Srebotnik E., K.A. Jensen and K.E. Hammel. 1998. Fungal degradation of recalcitrant nonphenolic lignin structure without lignin peroxidase. *Proc Natl Acad Sci* 91:12794-12797.
- Staments P. and J.S. Chilton. 1983. *The Mushroom Cultivator*. Agaricon Press. Olympia, Washington.
- Steffen, K.T. 2003. *Degradation of recalcitrant biopolymers and polycyclic aromatic hydrocarbons by litter-decomposing basidiomycetous fungi*. [disertasi]. Helsinki: Division of Microbiology Department of Applied Chemistry and Microbiology Viikki Biocenter, University of Helsinki.
- Subiyatno. 2010. *Aplikasi Informasi Paten Untuk Perintisan Industri Baru Berbasis Sumber Daya Alam, Studi Kasus Informasi Paten Di Bidang Pemanfaatan Jerami*. Pusat Inovasi Lembaga Ilmu Pengetahuan Indonesia.
- Suparjo. 2008. *Degradasi Komponen Lignoselulosa oleh Kapang Pelapuk Putih*. <http://Jajo66.wordpress.com/>. Diakses pada tanggal 24 September 2012.
- Sun, Y. and J. Cheng. 2002. *Hydrolysis of lignocellulosic materials for ethanol production: a review*. 2002. *Bio resource Technology* 83: 1 – 11.
- Sutardi, T. 1980. *Landasan Ilmu Nutrisi Departemen Ilmu Makanan Ternak*, Fakultas Peternakan Institut Pertanian Bogor.

- Taherzadeh M.J. 1999. *Ethanol from Lignocellulose: Physiological Effects of Inhibitors and Fermentation Strategies*. [thesis]. Göteborg: Department of Chemical Reaction Engineering, Chalmers University Of Technology.
- Tuomela, M. 2002. *Degradation of lignin and other 14C-labelled compounds in compost and soil with an emphasis on white-rot fungi*. Helsinki: Dep. Appl. Chem. Microbiol. Division of Microbiology University of Helsinki.
- Vähätalo A.V., K. Salonen, M. Salkinoja-Salonen and A. Hatakka. 1999. Photochemical mineralization of synthetic lignin in lake water indicates rapid turnover of aromatic organic matter under solar radiation. *Biodegradation* 10:415-420.
- Van Soest P. J. 1976. New Chemical Methods for Analysis of Forages for The Purpose of Predicting Nutritive Value. Pref IX International Grassland Cong.
- Wilson KB and M. Walter. 2002. *Development of Biotechnology Tool Using New Zealand White Rot Fungi to Degrade Pentachorophenol*. Hasil Presentasi pada Waste Management Institute New Zealand. <http://www.hortresearch.co.nz/files/2002/biorew-wasteminz.pdf>.
- Yarris, L. (2012). The Evolutionary Road to Biofuels. Retrieved Feb 25, 2012, From Berkeley Lab: Lawrence Berkeley National Laboratory: http://www.Lbl.Gov/Publications/Yos/Assets/Img/Biofuels_Evolution.Jpg
- Yao F, Q. Wu, Y. Lei, Y. Xu. 2008. Rice straw .. fiber-reinforced high-density polyethylene composite: Effect of fiber type and loading . *Industrial Crops and Products*.28:63-72.
- Young, R. 1986. *Cellulosa Structure Modification and Hydrolysis*. New York.
- Yuniasmara C, Muchrodji, M.Bakrun. 2004. *Jamur Tiram*. Penebar Swadaya. Jakarta.
- Yunilas, 2009. *Bioteknologi Jerami Padi Melalui Fermentasi Sebagai Bahan Pakan Ternak Ruminansia* [Karya Ilmiah]. Departemen Peternakan, Fakultas Pertanian, Universitas Sumatra Utara. Medan.
- Zhang, X., H.Yu, H. Huang, Y. Liu. 2007. *Evaluation of biological pretreatment with white rot fungi for the enzymatic hydrolysis of bamboo culms*. *International Biodeterioration & Biodegradation* 60:159–164.

LAMPIRAN

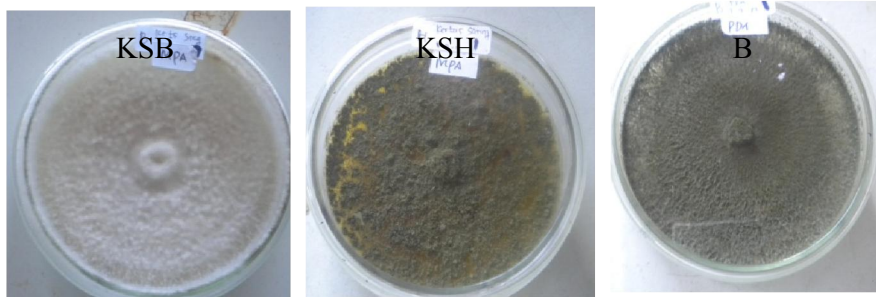
Lampiran 1. Penampakan koloni 7 isolat jamur pelapuk pada media PDA, 7 hari setelah inokulasi.



Isolat JM

Isolat MKS

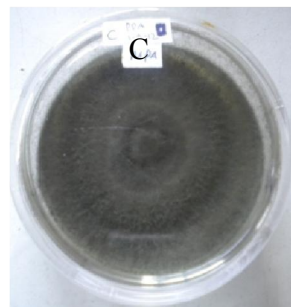
Isolat E



Isolat KSB

Isolat KSH

Isolat B



Isolat C

Lampiran 2. Gambar Pengamatan ke-2 sampai ke-9

Gambar pengamatan ke-2 (6 hari) setelah inokulasi



Isolat KSH

Isolat KSB

Isolat JM

Isolat MKS



Isolat B

Isolat C

Isolat E

Kontrol

Gambar pengamatan ke-3 (9 hari) setelah inokulasi



Isolat KSH

Isolat KSB

Isolat JM

Isolat MKS



Isolat B

Isolat C

Isolat E

Kontrol

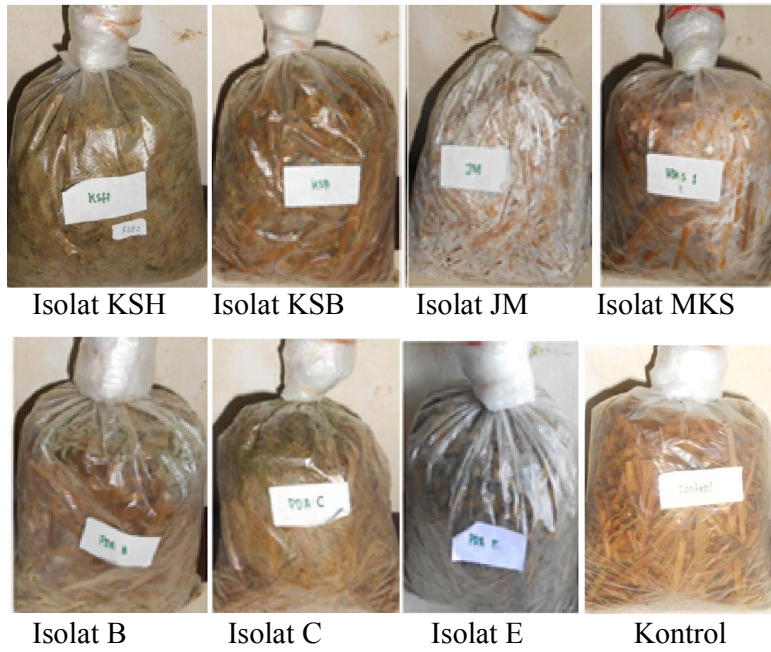
Gambar pengamatan ke-4 (12 hari) setelah inokulasi



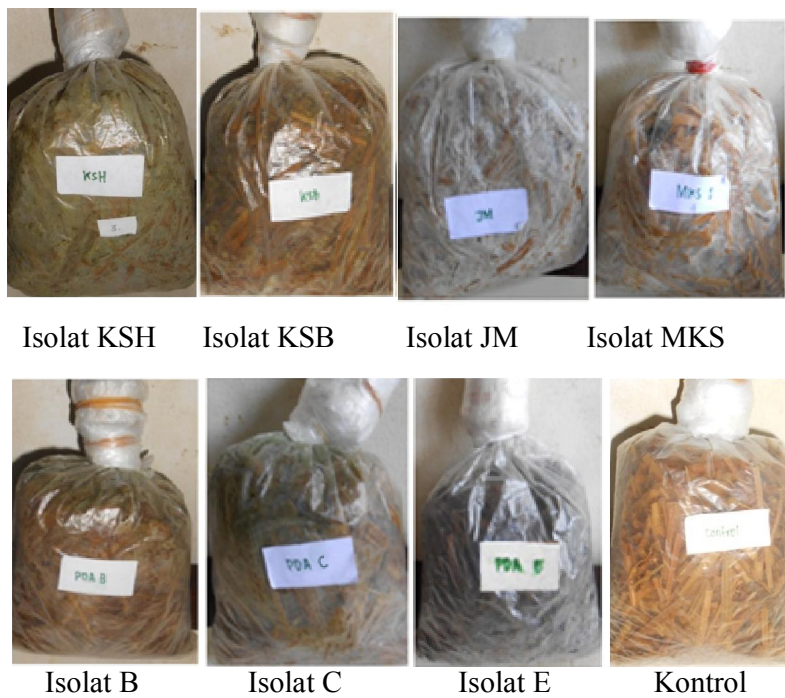
Gambar pengamatan ke-5 (15 hari) setelah inokulasi



Gambar pengamatan ke-6 (18 hari) setelah inokulasi



Gambar pengamatan ke-7 (21 hari) setelah inokulasi



Gambar pengamatan ke-8 (24 hari) setelah inoculasi



Isolat KSH Isolat KSB Isolat JM Isolat MKS



Isolat B Isolat C Isolat E Kontrol

Gambar pengamatan ke-9 (27 hari) setelah inoculasi



Isolat KSH Isolat KSB Isolat JM Isolat MKS



Isolat B Isolat C Isolat E Kontrol

Lampiran 3. Diagram alir analisis serat dengan metode Van Soest

