

## DAFTAR PUSTAKA

- Adnan. 2008. *Pengaruh Kerapatan Tanaman*. [online] <http://adnanlpp.wordpress.com/>. [22 april 2013].
- Anonim. 2012. Sejarah singkat bola benih. [online] [http://translate.google.co.id/translate?hl=id&langpair=en%7Cid&u=http://en.wikipedia.org/wiki/Seed\\_ball](http://translate.google.co.id/translate?hl=id&langpair=en%7Cid&u=http://en.wikipedia.org/wiki/Seed_ball). [24 oktober 2012].
- Anonim. 2012. <http://www.youtube.com/watch?v=c7WAtjPl-zo> [24 Oktober 2012].
- Atmosuseno, B. S. 1997. *Budi Daya, Kegunaan, dan Prospek Sengon*. edisi 3. Penebar Swadaya. Jakarta. Hal 8-11.
- Badan Pusat Statistik Kabupaten Gowa. 2012. *Kecamatan Tinggimoncong dalam Angka Tahun 2013*. BPS Gowa. Sungguminasa. Indonesia.
- Brian, H and Peta Mc Ghee.1992. *Development of Aerial Seeding for the Regeneration of Tasmanian Eucalypt*. Forstry.Comission Tasmania.[http://www.forestrytas.com.au/assets/0000/0475/article\\_8.pdf](http://www.forestrytas.com.au/assets/0000/0475/article_8.pdf). [24 Oktober 2012].
- Dadan, M. dan Ceng A. 2012. *Untung Besar dari Bertanam Sengon*. Agromedia Pustaka. Jakarta.
- Darjadi, L. dan Hardjono. 1972. *Sendi-sendi Silvikultur*. Dirjen Kehutanan. Jakarta.
- Departemen Kehutanan Dan Perkebunan. 2000. *Buku Pintar Penyuluhan Kehutanan dan Perkebunan*. Edisi 2. Pusat Bina Penyuluhan Kehutanan dan perkebunan. Jakarta. Hal 113.
- Departemen Kehutanan. 2002. *Informasi Singkat Benih*. [online] [http://www.dephut.go.id/INFORMASI/RRL/IFSP/Paraserianthes\\_falcatari\\_a.pdf](http://www.dephut.go.id/INFORMASI/RRL/IFSP/Paraserianthes_falcatari_a.pdf) [24 oktober 2012].
- Hartanto. 2006. "*Land use*" dan "*land cover*". [online] <http://hartanto.wordpress.com/2006/08/14/land-use-dan-land-cover/>. [29 oktober 2012].
- Isroi. 2009. *Peran Bahan Organik Tanah*. [online] <http://isroi.com/2009/01/29/peranan-bahan-organik-tanah/> [20 Juli 2013].

- Krisnawati, H., Varis, E., Kallio, M. dan Kanninen, M. 2011. *Paraserianthes falcataria (L.) Nielsen: ekologi, silvikultur dan produktivitas*. Cifor. Bogor. Indonesia. Hal 4-6.
- Nasution, A.S. 2008. *Mengenal Kayu Sengon (Paraserianthes falcataria)* [online] <http://sanoesi.wordpress.com/2008/12/18/mengenal-kayu-sengon-paraserianthes-falcataria/> [5 November 2012].
- Plantamor. 2012. *Informasi Spesies Sengon (Paraserianthes falcataria (L.) Nielsen )*. [online] <http://www.plantamor.com/index.php?plant=952>. [29 oktober 2012].
- Santoso, H.B. 1992. *Budidaya Sengon*. Kanisius. Yogyakarta. Hal 16-18.

**Lampiran 1.** Data Pengamatan Uji Daya Kecambah/ Viabilitas Benih Sengon

<b>No</b>	<b>Hari/Tanggal</b>	<b>Jumlah Benih Berkecambah</b>
1	Sabtu, 15/9/2012	-
2	Minggu, 16/9/2012	-
3	Senin, 17/9/2012	3
4	Selasa, 18/9/2012	7
5	Rabu, 19/9/2012	9
6	Kamis, 20/9/2012	5
7	Jumat, 21/9/2012	8
8	Sabtu, 22/9/2012	6
9	Minggu, 23/9/2012	4
10	Senin, 24/9/2012	-
11	Selasa, 25/9/2012	2
12	Rabu, 26/9/2012	7
13	Kamis, 27/9/2012	3
14	Jumat, 28/9/2012	3
15	Sabtu, 29/9/2012	5
16	Minggu, 30/9/2012	2
17	Senin, 1/10/2012	-
18	Selasa, 2/10/2012	-
19	Rabu, 3/10/2012	3
20	Kamis, 4/10/2012	6
<b>Jumlah Benih Berkecambah</b>		<b>73</b>
<b>Jumlah Benih yang Digunakan</b>		<b>100</b>

$$\begin{aligned}\text{Daya Kecambah} &= (73/100) \times 100\% \\ &= 73\%\end{aligned}$$

Lampiran 2. Data perkecambahan Tanaman Sengon dalam *Ball Seeding*

NO.	Hari/Tanggal	P1J1									P1J2								
		ul.1	ul.2	ul.3	ul.4	ul.5	ul.6	ul.7	ul.8	ul.9	ul.1	ul.2	ul.3	ul.4	ul.5	ul.6	ul.7	ul.8	ul.9
1	Kamis/18-10-12	0	0	0	1	1	0	1	1	1	0	0	0	1	0	0	0	0	0
2	Kamis/25-10-12	0	0	0	2	0	0	0	1	1	1	0	0	1	0	0	0	0	0
3	Kamis/1-11-12	0	0	0	2	2	3	0	0	0	0	0	0	0	0	0	0	0	0
4	Kamis/8-11-12	0	0	0	0	0	0	0	0	0	0	0	0	0	0	0	0	0	0
5	Minggu/18-11-12	0	0	0	0	0	0	0	0	0	0	0	0	1	0	0	0	0	0
6	Sabtu/24-11-12	0	0	0	0	0	0	0	0	0	0	0	0	0	0	0	0	0	0
7	sabtu/1-12-12	0	0	0	0	0	0	0	0	0	0	0	0	0	0	0	0	0	0
8	Sabtu/8-12-12	0	0	0	0	0	0	0	0	0	0	0	0	0	0	0	0	0	0
<b>jumlah berkecambah</b>		<b>0</b>	<b>0</b>	<b>0</b>	<b>2</b>	<b>1</b>	<b>3</b>	<b>1</b>	<b>1</b>	<b>1</b>	<b>1</b>	<b>0</b>	<b>0</b>	<b>2</b>	<b>0</b>	<b>0</b>	<b>0</b>	<b>0</b>	<b>0</b>
<b>persentase perkecambahan (%)</b>		<b>0</b>	<b>0</b>	<b>0</b>	<b>66.67</b>	<b>33.33</b>	<b>100</b>	<b>33.33</b>	<b>33.33</b>	<b>33.33</b>	<b>20</b>	<b>0</b>	<b>0</b>	<b>40</b>	<b>0</b>	<b>0</b>	<b>0</b>	<b>0</b>	<b>0</b>
<b>Rata-rata persentase perkecambahan (%)</b>		<b>33.33</b>									<b>6.67</b>								

**Lanjutan**

NO.	Hari/Tanggal	P1J3									P1J4								
		ul.1	ul.2	ul.3	ul.4	ul.5	ul.6	ul.7	ul.8	ul.9	ul.1	ul.2	ul.3	ul.4	ul.5	ul.6	ul.7	ul.8	ul.9
1	Kamis/18-10-12	1	1	0	0	0	0	3	4	2	1	1	4	0	1	0	3	1	1
2	Kamis/25-10-12	3	1	0	0	0	0	3	4	2	0	5	4	0	0	0	5	1	1
3	Kamis/1-11-12	3	0	0	1	1	0	0	0	0	1	3	6	0	0	0	6	1	2
4	Kamis/8-11-12	3	0	0	0	0	0	0	0	0	1	3	6	0	0	0	6	2	0
5	Ming/18-11-12	3	0	0	0	0	0	0	0	0	1	4	6	1	0	0	6	2	0
6	Sabtu/24-11-12	2	0	0	0	0	0	0	0	0	1	4	6	1	0	0	6	2	0
7	sabtu/1-12-12	2	0	0	0	0	0	0	0	0	1	4	6	1	0	0	6	2	0
8	Sabtu/8-12-12	2	0	0	0	0	0	0	0	0	1	4	6	1	0	0	6	2	0
<b>jumlah berkecambah</b>		<b>3</b>	<b>1</b>	<b>0</b>	<b>1</b>	<b>1</b>	<b>0</b>	<b>3</b>	<b>4</b>	<b>2</b>	<b>2</b>	<b>5</b>	<b>6</b>	<b>1</b>	<b>1</b>	<b>0</b>	<b>6</b>	<b>2</b>	<b>2</b>
<b>persentase perkecambahan (%)</b>		<b>42.86</b>	<b>14.29</b>	<b>0</b>	<b>14.29</b>	<b>14.29</b>	<b>0</b>	<b>42.86</b>	<b>57.14</b>	<b>28.57</b>	<b>22.22</b>	<b>55.56</b>	<b>66.67</b>	<b>11.11</b>	<b>11.11</b>	<b>0</b>	<b>66.67</b>	<b>22.22</b>	<b>22.22</b>
<b>Rata-rata persentase perkecambahan(%)</b>		<b>23.81</b>									<b>30.86</b>								

**Lanjutan**

NO.	Hari/Tanggal	P2J1									P2J2								
		ul.1	ul.2	ul.3	ul.4	ul.5	ul.6	ul.7	ul.8	ul.9	ul.1	ul.2	ul.3	ul.4	ul.5	ul.6	ul.7	ul.8	ul.9
1	Kamis/18-10-12	2	3	2	1	1	1	1	2	2	4	2	2	2	0	2	2	0	1
2	Kamis/25-10-12	2	3	2	1	1	1	1	2	2	4	2	2	3	0	2	2	0	1
3	Kamis/1-11-12	2	3	2	1	1	1	1	2	2	4	2	2	3	0	2	2	0	1
4	Kamis/8-11-12	2	3	2	1	1	1	1	2	2	4	2	2	2	1	2	2	0	1
5	Ming/18-11-12	2	3	2	1	1	1	1	1	2	4	2	2	1	2	2	2	0	1
6	Sabtu/24-11-12	2	3	2	1	1	1	1	1	2	4	2	2	1	3	2	2	0	1
7	sabtu/1-12-12	2	3	2	1	1	1	1	1	2	4	2	2	1	3	2	2	0	1
8	Sabtu/8-12-12	2	3	2	1	1	1	1	1	2	4	2	2	1	3	2	2	0	1
<b>jumlah berkecambah</b>		<b>2</b>	<b>3</b>	<b>2</b>	<b>1</b>	<b>1</b>	<b>1</b>	<b>1</b>	<b>2</b>	<b>2</b>	<b>4</b>	<b>2</b>	<b>2</b>	<b>3</b>	<b>3</b>	<b>2</b>	<b>2</b>	<b>0</b>	<b>1</b>
<b>persentase perkecambahan (%)</b>		<b>66.67</b>	<b>100</b>	<b>66.67</b>	<b>33.33</b>	<b>33.33</b>	<b>33.33</b>	<b>33.33</b>	<b>66.67</b>	<b>66.67</b>	<b>80</b>	<b>40</b>	<b>40</b>	<b>60</b>	<b>60</b>	<b>40</b>	<b>40</b>	<b>0</b>	<b>20</b>
<b>Rata-rata persentase perkecambahan(%)</b>		<b>55.56</b>									<b>42.22</b>								

**Lanjutan**

NO.	Hari/Tanggal	P2J3									P2J4								
		ul.1	ul.2	ul.3	ul.4	ul.5	ul.6	ul.7	ul.8	ul.9	ul.1	ul.2	ul.3	ul.4	ul.5	ul.6	ul.7	ul.8	ul.9
1	Kamis/18-10-12	2	3	4	1	3	2	5	1	5	2	4	4	4	1	5	1	5	1
2	Kamis/25-10-12	2	3	5	1	4	2	5	1	6	3	4	4	4	1	5	1	6	1
3	Kamis/1-11-12	2	3	4	2	3	3	5	1	6	2	4	5	5	1	5	1	5	1
4	Kamis/8-11-12	2	3	4	3	4	3	4	1	6	2	4	4	4	2	5	1	5	1
5	Ming/18-11-12	2	3	4	3	3	4	4	1	6	2	4	4	4	1	5	1	5	1
6	Sabtu/24-11-12	2	3	4	3	3	4	4	1	6	2	4	4	4	1	5	1	5	1
7	sabtu/1-12-12	2	3	4	3	3	4	4	1	6	2	4	4	5	1	5	1	5	1
8	Sabtu/8-12-12	2	3	4	3	3	4	4	1	6	2	4	4	5	1	5	1	5	1
<b>jumlah berkecambah</b>		<b>2</b>	<b>3</b>	<b>5</b>	<b>3</b>	<b>5</b>	<b>4</b>	<b>5</b>	<b>5</b>	<b>6</b>	<b>3</b>	<b>4</b>	<b>5</b>	<b>5</b>	<b>2</b>	<b>5</b>	<b>1</b>	<b>6</b>	<b>1</b>
<b>persentase perkecambahan (%)</b>		<b>28.57</b>	<b>42.86</b>	<b>71.43</b>	<b>42.86</b>	<b>71.43</b>	<b>57.14</b>	<b>71.43</b>	<b>71.43</b>	<b>85.71</b>	<b>33.33</b>	<b>44.44</b>	<b>55.56</b>	<b>55.56</b>	<b>22.22</b>	<b>55.56</b>	<b>11.11</b>	<b>66.67</b>	<b>11.11</b>
<b>Rata-rata persentase perkecambahan(%)</b>		<b>60.32</b>									<b>39.51</b>								

**Lanjutan**

NO.	Hari/Tanggal	P3J1									P3J2								
		ul.1	ul.2	ul.3	ul.4	ul.5	ul.6	ul.7	ul.8	ul.9	ul.1	ul.2	ul.3	ul.4	ul.5	ul.6	ul.7	ul.8	ul.9
1	Kamis/18-10-12	0	0	0	1	0	0	1	0	0	3	3	0	1	1	0	2	2	0
2	Kamis/25-10-12	0	0	1	0	0	0	1	0	0	3	3	0	1	1	0	2	2	0
3	Kamis/1-11-12	0	0	0	0	0	0	0	0	0	0	2	1	0	1	0	2	2	0
4	Kamis/8-11-12	0	0	0	0	0	1	0	0	0	0	2	0	1	1	0	2	2	0
5	Ming/18-11-12	0	0	0	1	0	1	0	0	0	0	2	0	1	1	0	2	2	0
6	Sabtu/24-11-12	0	0	0	1	0	1	0	0	0	0	2	0	2	1	0	2	2	0
7	sabtu/1-12-12	0	0	0	1	0	1	0	0	0	0	2	0	2	1	0	2	2	0
8	Sabtu/8-12-12	0	0	0	1	0	1	0	0	0	0	2	0	2	1	0	2	2	0
<b>jumlah berkecambah</b>		<b>0</b>	<b>0</b>	<b>1</b>	<b>2</b>	<b>0</b>	<b>1</b>	<b>1</b>	<b>0</b>	<b>0</b>	<b>3</b>	<b>3</b>	<b>1</b>	<b>2</b>	<b>1</b>	<b>0</b>	<b>2</b>	<b>2</b>	<b>0</b>
<b>persentase perkecambahan(%)</b>		<b>0</b>	<b>0</b>	<b>33.33</b>	<b>66.67</b>	<b>0</b>	<b>33.33</b>	<b>33.33</b>	<b>0</b>	<b>0</b>	<b>60</b>	<b>60</b>	<b>20</b>	<b>40</b>	<b>20</b>	<b>0</b>	<b>40</b>	<b>40</b>	<b>0</b>
<b>Rata-rata persentase perkecambahan (%)</b>		<b>18.52</b>									<b>31.11</b>								



**Lanjutan**

NO.	Hari/Tanggal	P3J3									P3J4								
		ul.1	ul.2	ul.3	ul.4	ul.5	ul.6	ul.7	ul.8	ul.9	ul.1	ul.2	ul.3	ul.4	ul.5	ul.6	ul.7	ul.8	ul.9
1	Kamis/18-10-12	2	0	0	3	3	0	0	0	0	0	0	0	1	0	0	2	3	3
2	Kamis/25-10-12	2	0	0	3	3	0	0	0	0	0	0	0	1	0	0	1	1	0
3	Kamis/1-11-12	2	0	0	2	2	0	0	0	0	0	1	0	1	0	0	1	1	0
4	Kamis/8-11-12	2	0	0	1	0	0	0	0	0	0	1	0	3	0	0	1	2	0
5	Ming/18-11-12	2	0	0	1	0	0	0	0	0	0	1	0	3	0	0	1	2	0
6	Sabtu/24-11-12	2	0	1	1	0	0	0	0	0	0	1	0	3	0	0	1	2	0
7	sabtu/1-12-12	2	0	1	1	0	0	0	0	0	0	1	0	3	0	0	1	2	0
8	Sabtu/8-12-12	2	0	1	1	0	0	0	0	0	0	1	0	3	0	0	1	2	0
<b>jumlah berkecambah</b>		<b>2</b>	<b>0</b>	<b>1</b>	<b>3</b>	<b>3</b>	<b>0</b>	<b>0</b>	<b>0</b>	<b>0</b>	<b>0</b>	<b>1</b>	<b>0</b>	<b>3</b>	<b>0</b>	<b>0</b>	<b>2</b>	<b>4</b>	<b>3</b>
<b>persentase perkecambahan (%)</b>		<b>28.57</b>	<b>0</b>	<b>14.29</b>	<b>42.86</b>	<b>42.86</b>	<b>0</b>	<b>0</b>	<b>0</b>	<b>0</b>	<b>0.00</b>	<b>11.11</b>	<b>0</b>	<b>33.33</b>	<b>0</b>	<b>0</b>	<b>22.22</b>	<b>44.44</b>	<b>33.33</b>
<b>Rata-rata persentase perkecambahan (%)</b>		<b>14.29</b>									<b>16.05</b>								

**Lanjutan**

NO.	Hari/Tanggal	P4J1									P4J2								
		ul.1	ul.2	ul.3	ul.4	ul.5	ul.6	ul.7	ul.8	ul.9	ul.1	ul.2	ul.3	ul.4	ul.5	ul.6	ul.7	ul.8	ul.9
1	Kamis/18-10-12	1	2	3	1	0	0	0	0	0	1	5	2	1	0	0	0	0	0
2	Kamis/25-10-12	1	2	3	0	0	0	0	0	0	1	5	2	0	0	0	0	0	0
3	Kamis/1-11-12	1	2	0	0	0	0	0	0	0	4	1	4	0	0	0	0	0	0
4	Kamis/8-11-12	0	0	0	0	0	0	0	0	0	3	0	4	0	0	0	0	0	0
5	Ming/18-11-12	0	0	0	0	0	0	0	0	0	3	0	4	0	0	0	0	0	0
6	Sabtu/24-11-12	0	0	0	0	0	0	0	0	0	3	0	4	0	0	0	0	0	0
7	sabtu/1-12-12	0	0	0	0	0	0	0	0	0	2	0	4	0	0	0	0	0	0
8	Sabtu/8-12-12	0	0	0	0	0	0	0	0	0	2	0	4	0	0	0	0	0	0
<b>jumlah berkecambah</b>		<b>1</b>	<b>2</b>	<b>3</b>	<b>1</b>	<b>0</b>	<b>0</b>	<b>0</b>	<b>0</b>	<b>0</b>	<b>4</b>	<b>5</b>	<b>4</b>	<b>1</b>	<b>0</b>	<b>0</b>	<b>0</b>	<b>0</b>	<b>0</b>
<b>persentase perkecambahan (%)</b>		<b>33.33</b>	<b>66.67</b>	<b>100</b>	<b>33.33</b>	<b>0</b>	<b>0</b>	<b>0</b>	<b>0</b>	<b>0</b>	<b>80</b>	<b>100</b>	<b>80</b>	<b>20</b>	<b>0</b>	<b>0</b>	<b>0</b>	<b>0</b>	<b>0</b>
<b>Rata-rata persentase perkecambahan (%)</b>		<b>25.93</b>									<b>31.11</b>								

**Lanjutan**

NO.	Hari/Tanggal	P4J3									P4J4								
		ul.1	ul.2	ul.3	ul.4	ul.5	ul.6	ul.7	ul.8	ul.9	ul.1	ul.2	ul.3	ul.4	ul.5	ul.6	ul.7	ul.8	ul.9
1	Kamis/18-10-12	0	2	3	1	0	0	0	0	0	0	0	3	1	1	2	1	1	0
2	Kamis/25-10-12	0	2	3	0	0	0	0	0	0	0	1	1	0	0	2	1	1	0
3	Kamis/1-11-12	0	2	3	0	0	0	0	0	0	0	0	1	0	0	2	1	1	0
4	Kamis/8-11-12	0	2	4	0	0	0	0	0	0	0	0	1	0	1	4	0	0	0
5	Ming/18-11-12	0	3	3	1	0	0	0	0	0	0	0	1	0	0	3	0	0	0
6	Sabtu/24-11-12	0	4	2	0	0	0	0	0	0	0	0	1	0	0	4	0	0	0
7	sabtu/1-12-12	0	4	2	0	0	0	0	0	0	0	0	1	0	0	4	0	0	0
8	Sabtu/8-12-12	0	4	2	0	0	0	0	0	0	0	0	1	0	0	4	0	0	0
<b>jumlah berkecambah</b>		<b>0</b>	<b>4</b>	<b>4</b>	<b>2</b>	<b>0</b>	<b>0</b>	<b>0</b>	<b>0</b>	<b>0</b>	<b>0</b>	<b>1</b>	<b>3</b>	<b>1</b>	<b>2</b>	<b>5</b>	<b>1</b>	<b>1</b>	<b>0</b>
<b>persentase perkecambahan (%)</b>		<b>0</b>	<b>57.14</b>	<b>57.14</b>	<b>28.57</b>	<b>0</b>	<b>0</b>	<b>0</b>	<b>0</b>	<b>0</b>	<b>0</b>	<b>11.11</b>	<b>33.33</b>	<b>11.11</b>	<b>22.22</b>	<b>55.56</b>	<b>11.11</b>	<b>11.11</b>	<b>0</b>
<b>Rata-rata persentase perkecambahan (%)</b>		<b>15.87</b>									<b>17.28</b>								

**Lampiran 3.** Data Pengamatan Tinggi Tanaman Sengon dalam *Ball Seeding*

No	Unit Perlakuan	u	Minggu 5				Minggu 7				Minggu 9				Minggu 11				Minggu 15			
			Maks	Min	Rata-rata	Jt	Maks	Min	Rata-rata	Jt	Maks	Min	Rata-rata	Jt	Maks	Min	Rata-rata	Jt	Maks	Min	Rata-rata	Jt
1	<b>P1J1</b>	<b>1</b>	<b>0</b>	<b>0</b>	<b>0</b>	<b>0</b>	<b>0</b>	<b>0</b>	<b>0</b>	<b>0</b>	<b>0</b>	<b>0</b>	<b>0</b>	<b>0</b>	<b>0</b>	<b>0</b>	<b>0</b>	<b>0</b>	<b>0</b>	<b>0</b>	<b>0</b>	<b>0</b>
2		2	0	0	0	0	0	0	0	0	0	0	0	0	0	0	0	0	0	0	0	0
3		3	0	0	0	0	0	0	0	0	0	0	0	0	0	0	0	0	0	0	0	0
4		4	0	0	0	0	0	0	0	0	0	0	0	0	0	0	0	0	0	0	0	0
5		5	0	0	0	0	0	0	0	0	0	0	0	0	0	0	0	0	0	0	0	0
6		6	0	0	0	0	0	0	0	0	0	0	0	0	0	0	0	0	0	0	0	0
7		7	0	0	0	0	0	0	0	0	0	0	0	0	0	0	0	0	0	0	0	0
8		8	0	0	0	0	0	0	0	0	0	0	0	0	0	0	0	0	0	0	0	0
9		9	0	0	0	0	0	0	0	0	0	0	0	0	0	0	0	0	0	0	0	0
10	<b>P1J2</b>	<b>1</b>	<b>0</b>	<b>0</b>	<b>0</b>	<b>0</b>	<b>0</b>	<b>0</b>	<b>0</b>	<b>0</b>	<b>0</b>	<b>0</b>	<b>0</b>	<b>0</b>	<b>0</b>	<b>0</b>	<b>0</b>	<b>0</b>	<b>0</b>	<b>0</b>	<b>0</b>	<b>0</b>
11		2	0	0	0	0	0	0	0	0	0	0	0	0	0	0	0	0	0	0	0	0
12		3	0	0	0	0	0	0	0	0	0	0	0	0	0	0	0	0	0	0	0	0
13		4	2.7	2.7	2.7	1	0	0	0	0	0	0	0	0	0	0	0	0	0	0	0	0
14		5	0	0	0	0	0	0	0	0	0	0	0	0	0	0	0	0	0	0	0	0
15		6	0	0	0	0	0	0	0	0	0	0	0	0	0	0	0	0	0	0	0	0
16		7	0	0	0	0	0	0	0	0	0	0	0	0	0	0	0	0	0	0	0	0
17		8	0	0	0	0	0	0	0	0	0	0	0	0	0	0	0	0	0	0	0	0
18		9	0	0	0	0	0	0	0	0	0	0	0	0	0	0	0	0	0	0	0	0
19	<b>P1J3</b>	<b>1</b>	<b>4.5</b>	<b>3.7</b>	<b>4.1</b>	<b>3</b>	<b>5</b>	<b>4</b>	<b>4.5</b>	<b>2</b>	<b>5.6</b>	<b>4.3</b>	<b>4.9</b>	<b>2</b>	<b>6.3</b>	<b>5.3</b>	<b>5.8</b>	<b>2</b>	<b>7.8</b>	<b>7.4</b>	<b>7.6</b>	<b>2</b>
20		2	0	0	0	0	0	0	0	0	0	0	0	0	0	0	0	0	0	0	0	0
21		3	0	0	0	0	0	0	0	0	0	0	0	0	0	0	0	0	0	0	0	0
22		4	0	0	0	0	0	0	0	0	0	0	0	0	0	0	0	0	0	0	0	0
23		5	0	0	0	0	0	0	0	0	0	0	0	0	0	0	0	0	0	0	0	0
24		6	0	0	0	0	0	0	0	0	0	0	0	0	0	0	0	0	0	0	0	0
25		7	0	0	0	0	0	0	0	0	0	0	0	0	0	0	0	0	0	0	0	0

**Lanjutan**

26		<b>8</b>	0	0	0	0	0	0	0	0	0	0	0	0	0	0	0	0	0	0	0	0
27		<b>9</b>	0	0	0	0	0	0	0	0	0	0	0	0	0	0	0	0	0	0	0	0
28	<b>P1J4</b>	<b>1</b>	<b>5.6</b>	<b>5.6</b>	<b>5.6</b>	<b>1</b>	<b>5.9</b>	<b>5.9</b>	<b>5.9</b>	<b>1</b>	<b>6.3</b>	<b>6.3</b>	<b>6.3</b>	<b>1</b>	<b>7.1</b>	<b>7.1</b>	<b>7.1</b>	<b>1</b>	<b>8.4</b>	<b>8.4</b>	<b>8.4</b>	<b>1</b>
29		<b>2</b>	6.5	4	5.3	4	6.8	4.8	5.7	4	7.3	5.3	6.2	4	8.1	6	7.3	4	9.5	8.3	8.9	4
30		<b>3</b>	7	4	4.6	6	7.6	4.5	5.9	6	8.2	5.7	6.9	5	9	6.2	7.7	5	10.2	7.3	8.7	5
31		<b>4</b>	2.5	2.5	2.5	1	3	3	3	1	5	5	5	1	6.3	6.3	6.3	1	8.6	8.6	8.6	1
32		<b>5</b>	0	0	0	0	0	0	0	0	0	0	0	0	0	0	0	0	0	0	0	0
33		<b>6</b>	0	0	0	0	0	0	0	0	0	0	0	0	0	0	0	0	0	0	0	0
34		<b>7</b>	6	2.5	4.2	6	6.3	2.9	4.4	6	6.5	3.7	5	6	7.2	4.6	5.5	4	8.7	6.3	7.4	4
35		<b>8</b>	3	2	2.5	2	3.2	2.4	2.8	2	3.6	3.2	3.4	2	5.2	4.7	4.9	2	7.2	5.7	6.4	2
36		<b>9</b>	0	0	0	0	0	0	0	0	0	0	0	0	0	0	0	0	0	0	0	0
37	<b>P2J1</b>	<b>1</b>	<b>6</b>	<b>6</b>	<b>6</b>	<b>2</b>	<b>7.6</b>	<b>7</b>	<b>7.3</b>	<b>2</b>	<b>8.2</b>	<b>7.9</b>	<b>8.1</b>	<b>2</b>	<b>8.9</b>	<b>8.2</b>	<b>8.5</b>	<b>2</b>	<b>10.7</b>	<b>10.2</b>	<b>10.4</b>	<b>2</b>
38		<b>2</b>	5	5	5	3	7	6	6.7	3	7.7	6.8	7.4	3	8.1	7.2	7.8	3	10.5	9.7	10.2	3
39		<b>3</b>	5	3.5	4.2	2	5.5	4	4.7	2	6.3	5.3	5.8	2	7.1	6.3	6.7	2	9.3	8.4	8.8	2
40		<b>4</b>	5.5	5.5	5.5	1	6	6	6	1	7.1	7.1	7.1	1	7.9	7.9	7.9	1	9.3	9.3	9.3	1
41		<b>5</b>	5.5	5.5	5.5	1	6.5	6.5	6.5	1	7.2	7.2	7.2	1	8.1	8.1	8.1	1	10.2	10.2	10.2	1
42		<b>6</b>	5	5	5	1	5.7	5.7	5.7	1	6.9	6.9	6.9	1	7.2	7.2	7.2	1	8.7	8.7	8.7	1
43		<b>7</b>	5	5	5	1	6	6	6	1	6.8	6.8	6.8	1	7.3	7.3	7.3	1	9.3	9.3	9.3	1
44		<b>8</b>	7	7	7	1	7	7	7	1	7.4	7.4	7.4	1	8.2	8.2	8.2	1	11.6	11.6	11.6	1
45		<b>9</b>	4.5	3	3.7	2	5.5	4	4.7	2	6.4	4.7	5.5	2	7.2	5.4	6.3	2	9.1	7.2	8.1	2
46	<b>P2J2</b>	<b>1</b>	<b>5</b>	<b>3.5</b>	<b>4.5</b>	<b>4</b>	<b>6</b>	<b>5</b>	<b>5.6</b>	<b>4</b>	<b>6.8</b>	<b>5.9</b>	<b>6.4</b>	<b>4</b>	<b>7.4</b>	<b>6.5</b>	<b>7.1</b>	<b>4</b>	<b>9.5</b>	<b>8.3</b>	<b>8.9</b>	<b>4</b>
47		<b>2</b>	6.5	5	5.7	2	7.5	5.5	6.5	2	8.2	6.3	7.2	2	9	7.1	8	2	10.3	9.8	10	2
48		<b>3</b>	6	5	5.5	2	7	5.5	6.1	2	7.8	6.4	7.1	2	8.3	7.2	7.7	2	10.6	9.4	10	2
49		<b>4</b>	5	5	5	1	6	6	6	1	6.9	6.9	6.9	1	7.4	7.4	7.4	1	9.2	9.2	9.2	1
50		<b>5</b>	3	1	2	2	5	2.7	3.7	3	6.7	3.4	4.9	3	7.2	4.3	5.6	3	9.4	5.4	7.2	3
51		<b>6</b>	6	4	5	2	6.5	4.5	5.5	2	7.2	5.3	6.2	2	7.9	6.4	7.1	2	9.2	8.2	8.7	2
52		<b>7</b>	7	3	5	2	7	4	5.5	2	7.7	4.8	6.2	2	8.3	5.7	7	2	10	7.1	8.5	2
53		<b>8</b>	0	0	0	0	0	0	0	0	0	0	0	0	0	0	0	0	0	0	0	0

**Lanjutan**

54		<b>9</b>	5.7	5.7	5.7	1	6	6	6	1	6.9	6.9	6.9	1	7.6	7.6	7.6	1	9.5	9.5	9.5	1
55	<b>P2J3</b>	<b>1</b>	<b>5.5</b>	<b>4</b>	<b>4.7</b>	<b>2</b>	<b>6</b>	<b>5.4</b>	<b>5.7</b>	<b>2</b>	<b>6.8</b>	<b>6.3</b>	<b>6.5</b>	<b>2</b>	<b>7.7</b>	<b>7.3</b>	<b>7.5</b>	<b>2</b>	<b>9.7</b>	<b>9.2</b>	<b>9.4</b>	<b>2</b>
56		<b>2</b>	5	3	4.2	3	6	4	5.2	3	7.1	4.8	6.1	3	7.9	5.7	6.9	3	9.7	7.8	8.9	3
57		<b>3</b>	6.5	5	5.9	4	7	5.5	6.4	4	7.8	6.3	7.3	4	8.2	7.2	7.9	4	10.8	9.4	10.1	4
58		<b>4</b>	3.5	2	3	3	4	3.5	3.8	3	5.2	4.7	4.9	3	5.8	5.3	5.5	3	7.4	7.3	7.3	3
59		<b>5</b>	4.5	4.5	4.5	3	6	5.5	5.5	3	6.7	6.3	6.4	3	7.4	7.1	7.3	3	8.8	8.5	8.6	3
60		<b>6</b>	6	1	3.9	4	6.5	2.5	4.6	4	6.7	3.7	5.4	4	7.6	4.2	6.1	4	9.2	6.3	7.8	4
61		<b>7</b>	5	4	4.5	4	7	5	5.9	4	7.6	5.7	6.5	4	8.2	6.6	7.2	4	9.7	8.1	8.7	4
62		<b>8</b>	6	6	6	1	7.3	7.3	7.3	1	8.1	8.1	8.1	1	9.3	9.3	9.3	1	11.6	11.6	11.6	1
63		<b>9</b>	5	3	4.2	6	5	3.5	4.5	6	5.7	4.2	5.1	6	6.7	5.6	6.1	6	8.2	7.1	7.7	6
64	<b>P2J4</b>	<b>1</b>	<b>4</b>	<b>4</b>	<b>4</b>	<b>2</b>	<b>5.3</b>	<b>5</b>	<b>5.1</b>	<b>2</b>	<b>5.9</b>	<b>5.9</b>	<b>5.9</b>	<b>2</b>	<b>6.6</b>	<b>6.5</b>	<b>6.5</b>	<b>2</b>	<b>8.5</b>	<b>8.3</b>	<b>8.4</b>	<b>2</b>
65		<b>2</b>	7	4	5.7	4	7.5	5.5	6.9	4	8.3	6.2	7.6	4	8.8	7.2	8.3	4	11.1	9	10.2	4
66		<b>3</b>	6.5	4	5.3	4	7	4.5	5.7	4	7.7	5.7	6.4	4	8.3	6.2	7	4	10.7	8.1	9.1	4
67		<b>4</b>	5	4.5	4.7	4	6	2	4.8	5	6.7	6.2	6.5	4	7.3	6.8	7.1	4	9.4	8.3	9	4
68		<b>5</b>	4.5	4.5	4.5	1	5	5	5	1	5.7	5.7	5.7	1	6.3	6.3	6.3	1	8.3	8.3	8.3	1
69		<b>6</b>	5.5	3.5	4.5	5	6	5	5.3	5	6.5	5.7	5.9	5	7.4	6.7	7	5	10.1	8.3	8.9	5
70		<b>7</b>	5	5	5	1	6	6	6	1	6.7	6.7	6.7	1	7.4	7.4	7.4	1	9.7	9.7	9.7	1
71		<b>8</b>	5.5	3.6	4.4	5	5.5	4.5	5.1	5	6.3	5.7	6.1	5	7.9	6.7	7.1	5	8.9	8.1	8.5	5
72		<b>9</b>	5	5	5	1	5.4	5.4	5.4	1	5.9	5.9	5.9	1	6.4	6.4	6.4	1	8.5	8.5	8.5	1
73	<b>P3J1</b>	<b>1</b>	<b>0</b>	<b>0</b>	<b>0</b>	<b>0</b>	<b>0</b>	<b>0</b>	<b>0</b>	<b>0</b>	<b>0</b>	<b>0</b>	<b>0</b>	<b>0</b>	<b>0</b>	<b>0</b>	<b>0</b>	<b>0</b>	<b>0</b>	<b>0</b>	<b>0</b>	<b>0</b>
74		<b>2</b>	0	0	0	0	0	0	0	0	0	0	0	0	0	0	0	0	0	0	0	0
75		<b>3</b>	0	0	0	0	0	0	0	0	0	0	0	0	0	0	0	0	0	0	0	0
76		<b>4</b>	3	3	3	1	3.5	3.5	3.5	1	4.1	4.1	4.1	1	5.3	5.3	5.3	1	7.2	7.2	7.2	1
77		<b>5</b>	0	0	0	0	0	0	0	0	0	0	0	0	0	0	0	0	0	0	0	0
78		<b>6</b>	3	3	3	1	3.2	3.2	3.2	1	3.9	3.9	3.9	1	4.7	4.7	4.7	1	5.8	5.8	5.8	1
79		<b>7</b>	0	0	0	0	0	0	0	0	0	0	0	0	0	0	0	0	0	0	0	0
80		<b>8</b>	0	0	0	0	0	0	0	0	0	0	0	0	0	0	0	0	0	0	0	0
81		<b>9</b>	0	0	0	0	0	0	0	0	0	0	0	0	0	0	0	0	0	0	0	0

**Lanjutan**

82	<b>P3J2</b>	<b>1</b>	<b>0</b>	<b>0</b>	<b>0</b>	<b>0</b>	<b>0</b>	<b>0</b>	<b>0</b>	<b>0</b>	<b>0</b>	<b>0</b>	<b>0</b>	<b>0</b>	<b>0</b>	<b>0</b>	<b>0</b>	<b>0</b>	<b>0</b>	<b>0</b>	<b>0</b>	<b>0</b>
83		<b>2</b>	4.5	2.5	3.5	2	4.7	3	3.8	2	5.3	3.7	4.5	2	6.2	4.5	5.4	2	8.1	6.1	7.1	2
84		<b>3</b>	0	0	0	0	0	0	0	0	0	0	0	0	0	0	0	0	0	0	0	0
85		<b>4</b>	3	3	3	1	3.5	2.2	2.8	2	4.2	3.8	4	2	5.2	4.5	4.8	2	7.1	5.2	6.1	2
86		<b>5</b>	3.4	3.4	3.4	1	3.7	3.7	3.7	1	4.5	4.5	4.4	1	5.3	5.3	5.3	1	7.2	7.2	7.2	1
87		<b>6</b>	0	0	0	0	0	0	0	0	0	0	0	0	0	0	0	0	0	0	0	0
88		<b>7</b>	4	4	4	2	4.4	4.2	4.3	2	4.7	4.6	4.6	2	5.3	5.2	5.2	2	7.4	7.2	7.3	2
89		<b>8</b>	3.5	3	3.2	2	3.7	3.2	3.4	2	4.1	3.7	3.9	2	5.2	4.6	4.9	2	6.1	5.8	5.9	2
90		<b>9</b>	0	0	0	0	0	0	0	0	0	0	0	0	0	0	0	0	0	0	0	0
91	<b>P3J3</b>	<b>1</b>	<b>3.5</b>	<b>2.3</b>	<b>2.9</b>	<b>2</b>	<b>4</b>	<b>2.5</b>	<b>3.2</b>	<b>2</b>	<b>5</b>	<b>3.7</b>	<b>4.3</b>	<b>2</b>	<b>5.7</b>	<b>4.5</b>	<b>5.1</b>	<b>2</b>	<b>7.3</b>	<b>6.3</b>	<b>6.8</b>	<b>2</b>
92		<b>2</b>	0	0	0	0	0	0	0	0	0	0	0	0	0	0	0	0	0	0	0	0
93		<b>3</b>	0	0	0	0	2.3	2.3	2.3	1	3.2	3.2	3.2	1	4.2	4.2	4.2	1	6.3	6.3	6.3	1
94		<b>4</b>	1.5	1.5	1.5	1	2	2	2	1	3.1	3.1	3.1	1	4.5	4.5	4.5	1	6.2	6.2	6.2	1
95		<b>5</b>	0	0	0	0	0	0	0	0	0	0	0	0	0	0	0	0	0	0	0	0
96		<b>6</b>	0	0	0	0	0	0	0	0	0	0	0	0	0	0	0	0	0	0	0	0
97		<b>7</b>	0	0	0	0	0	0	0	0	0	0	0	0	0	0	0	0	0	0	0	0
98		<b>8</b>	0	0	0	0	0	0	0	0	0	0	0	0	0	0	0	0	0	0	0	0
99		<b>9</b>	0	0	0	0	0	0	0	0	0	0	0	0	0	0	0	0	0	0	0	0
100	<b>P3J4</b>	<b>1</b>	<b>0</b>	<b>0</b>	<b>0</b>	<b>0</b>	<b>0</b>	<b>0</b>	<b>0</b>	<b>0</b>	<b>0</b>	<b>0</b>	<b>0</b>	<b>0</b>	<b>0</b>	<b>0</b>	<b>0</b>	<b>0</b>	<b>0</b>	<b>0</b>	<b>0</b>	<b>0</b>
101		<b>2</b>	3	3	3	1	3.5	3.5	3.5	1	4.1	4.1	4.1	1	5.3	5.3	5.3	1	6.9	6.9	6.9	1
102		<b>3</b>	0	0	0	0	0	0	0	0	0	0	0	0	0	0	0	0	0	0	0	0
103		<b>4</b>	3	2.5	2.7	3	3.5	2.5	3	3	4.3	3.5	3.8	3	5.2	4.7	4.9	3	6.3	6.1	6.2	3
104		<b>5</b>	0	0	0	0	0	0	0	0	0	0	0	0	0	0	0	0	0	0	0	0
105		<b>6</b>	0	0	0	0	0	0	0	0	0	0	0	0	0	0	0	0	0	0	0	0
106		<b>7</b>	3.5	3.5	3.5	1	4	4	4	1	4.7	4.7	4.7	1	5.3	5.3	5.3	1	7.3	7.3	7.3	1
107		<b>8</b>	5	2.5	3.7	2	5.3	2.8	4.1	2	5.9	3.2	4.5	2	6.7	4.5	5.6	2	8.2	6.3	7.2	2
108		<b>9</b>	0	0	0	0	0	0	0	0	0	0	0	0	0	0	0	0	0	0	0	0
109	<b>P4J1</b>	<b>1</b>	<b>0</b>	<b>0</b>	<b>0</b>	<b>0</b>	<b>0</b>	<b>0</b>	<b>0</b>	<b>0</b>	<b>0</b>	<b>0</b>	<b>0</b>	<b>0</b>	<b>0</b>	<b>0</b>	<b>0</b>	<b>0</b>	<b>0</b>	<b>0</b>	<b>0</b>	<b>0</b>

**Lanjutan**

110		2	0	0	0	0	0	0	0	0	0	0	0	0	0	0	0	0	0	0	0	0
111		3	0	0	0	0	0	0	0	0	0	0	0	0	0	0	0	0	0	0	0	0
112		4	0	0	0	0	0	0	0	0	0	0	0	0	0	0	0	0	0	0	0	0
113		5	0	0	0	0	0	0	0	0	0	0	0	0	0	0	0	0	0	0	0	0
114		6	0	0	0	0	0	0	0	0	0	0	0	0	0	0	0	0	0	0	0	0
115		7	0	0	0	0	0	0	0	0	0	0	0	0	0	0	0	0	0	0	0	0
116		8	0	0	0	0	0	0	0	0	0	0	0	0	0	0	0	0	0	0	0	0
117		9	0	0	0	0	0	0	0	0	0	0	0	0	0	0	0	0	0	0	0	0
118	<b>P4J2</b>	<b>1</b>	<b>7</b>	<b>5</b>	<b>6.3</b>	<b>3</b>	<b>7.4</b>	<b>7.3</b>	<b>7.3</b>	<b>2</b>	<b>8.2</b>	<b>8</b>	<b>8.1</b>	<b>2</b>	<b>9.2</b>	<b>8.7</b>	<b>8.9</b>	<b>2</b>	<b>10.4</b>	<b>9.3</b>	<b>9.8</b>	<b>2</b>
119		2	0	0	0	0	0	0	0	0	0	0	0	0	0	0	0	0	0	0	0	0
120		3	5	5	5	4	5.7	5	5.3	4	7	5.4	6.1	3	8.1	6.2	7	3	9.3	8.2	8.8	3
121		4	0	0	0	0	0	0	0	0	0	0	0	0	0	0	0	0	0	0	0	0
122		5	0	0	0	0	0	0	0	0	0	0	0	0	0	0	0	0	0	0	0	0
123		6	0	0	0	0	0	0	0	0	0	0	0	0	0	0	0	0	0	0	0	0
124		7	0	0	0	0	0	0	0	0	0	0	0	0	0	0	0	0	0	0	0	0
125		8	0	0	0	0	0	0	0	0	0	0	0	0	0	0	0	0	0	0	0	0
126		9	0	0	0	0	0	0	0	0	0	0	0	0	0	0	0	0	0	0	0	0
127	<b>P4J3</b>	<b>1</b>	<b>0</b>	<b>0</b>	<b>0</b>	<b>0</b>	<b>0</b>	<b>0</b>	<b>0</b>	<b>0</b>	<b>0</b>	<b>0</b>	<b>0</b>	<b>0</b>	<b>0</b>	<b>0</b>	<b>0</b>	<b>0</b>	<b>0</b>	<b>0</b>	<b>0</b>	<b>0</b>
128		2	6	1	4	3	6.3	1.2	3.5	4	6.9	2.7	4.8	4	7.5	3.5	5.6	4	8.3	5	6.7	4
129		3	6	3	4.3	3	5.5	4.7	5.1	2	5.9	5.1	5.5	2	7.3	6.9	7.1	2	8.3	7.6	7.9	2
130		4	5.3	5.3	5.3	1	0	0	0	0	0	0	0	0	0	0	0	0	0	0	0	0
131		5	0	0	0	0	0	0	0	0	0	0	0	0	0	0	0	0	0	0	0	0
132		6	0	0	0	0	0	0	0	0	0	0	0	0	0	0	0	0	0	0	0	0
133		7	0	0	0	0	0	0	0	0	0	0	0	0	0	0	0	0	0	0	0	0
134		8	0	0	0	0	0	0	0	0	0	0	0	0	0	0	0	0	0	0	0	0
135		9	0	0	0	0	0	0	0	0	0	0	0	0	0	0	0	0	0	0	0	0
136	<b>P4J4</b>	<b>1</b>	<b>0</b>	<b>0</b>	<b>0</b>	<b>0</b>	<b>0</b>	<b>0</b>	<b>0</b>	<b>0</b>	<b>0</b>	<b>0</b>	<b>0</b>	<b>0</b>	<b>0</b>	<b>0</b>	<b>0</b>	<b>0</b>	<b>0</b>	<b>0</b>	<b>0</b>	<b>0</b>
137		2	0	0	0	0	0	0	0	0	0	0	0	0	0	0	0	0	0	0	0	0



**Lanjutan**

138		<b>3</b>	4.5	4.5	4.5	1	5	5	5	1	5.4	5.4	5.4	1	6.2	6.2	6.2	1	8.4	8.4	8.4	1
139		<b>4</b>	0	0	0	0	0	0	0	0	0	0	0	0	0	0	0	0	0	0	0	0
140		<b>5</b>	0	0	0	0	0	0	0	0	0	0	0	0	0	0	0	0	0	0	0	0
141		<b>6</b>	5	4	4.7	3	5.2	3.1	4.5	4	5.7	4	4.8	4	7.3	5.3	6.1	4	8.7	6.6	7.7	4
142		<b>7</b>	0	0	0	0	0	0	0	0	0	0	0	0	0	0	0	0	0	0	0	0
143		<b>8</b>	0	0	0	0	0	0	0	0	0	0	0	0	0	0	0	0	0	0	0	0
144		<b>9</b>	0	0	0	0	0	0	0	0	0	0	0	0	0	0	0	0	0	0	0	0

**Lampiran 4.** Data pengamatan jumlah daun Tanaman Sengon dalam *Ball seeding*

No.	Unit Perlakuan	u	Minggu 5				Minggu 7				Minggu 9				Minggu 11				Minggu 15			
			Maks	Min	Rata-rata	Jt	Maks	Min	Rata-rata	Jt	Maks	Min	Rata-rata	Jt	Maks	Min	Rata-rata	Jt	Maks	Min	Rata-rata	Jt
1	P1J1	1	0	0	0	0	0	0	0	0	0	0	0	0	0	0	0	0	0	0	0	0
2		2	0	0	0	0	0	0	0	0	0	0	0	0	0	0	0	0	0	0	0	0
3		3	0	0	0	0	0	0	0	0	0	0	0	0	0	0	0	0	0	0	0	0
4		4	0	0	0	0	0	0	0	0	0	0	0	0	0	0	0	0	0	0	0	0
5		5	0	0	0	0	0	0	0	0	0	0	0	0	0	0	0	0	0	0	0	0
6		6	0	0	0	0	0	0	0	0	0	0	0	0	0	0	0	0	0	0	0	0
7		7	0	0	0	0	0	0	0	0	0	0	0	0	0	0	0	0	0	0	0	0
8		8	0	0	0	0	0	0	0	0	0	0	0	0	0	0	0	0	0	0	0	0
9		9	0	0	0	0	0	0	0	0	0	0	0	0	0	0	0	0	0	0	0	0
10	P1J2	1	0	0	0	0	0	0	0	0	0	0	0	0	0	0	0	0	0	0	0	0
11		2	0	0	0	0	0	0	0	0	0	0	0	0	0	0	0	0	0	0	0	0
12		3	0	0	0	0	0	0	0	0	0	0	0	0	0	0	0	0	0	0	0	0
13		4	6	6	6	1	0	0	0	0	0	0	0	0	0	0	0	0	0	0	0	0
14		5	0	0	0	0	0	0	0	0	0	0	0	0	0	0	0	0	0	0	0	0
15		6	0	0	0	0	0	0	0	0	0	0	0	0	0	0	0	0	0	0	0	0
16		7	0	0	0	0	0	0	0	0	0	0	0	0	0	0	0	0	0	0	0	0
17		8	0	0	0	0	0	0	0	0	0	0	0	0	0	0	0	0	0	0	0	0
18		9	0	0	0	0	0	0	0	0	0	0	0	0	0	0	0	0	0	0	0	0
19	P1J3	1	6	6	6	3	6	6	6	2	8	6	7	2	8	6	7	2	10	8	9	2
20		2	0	0	0	0	0	0	0	0	0	0	0	0	0	0	0	0	0	0	0	0
21		3	0	0	0	0	0	0	0	0	0	0	0	0	0	0	0	0	0	0	0	0
22		4	0	0	0	0	0	0	0	0	0	0	0	0	0	0	0	0	0	0	0	0
23		5	0	0	0	0	0	0	0	0	0	0	0	0	0	0	0	0	0	0	0	0
24		6	0	0	0	0	0	0	0	0	0	0	0	0	0	0	0	0	0	0	0	0
25		7	0	0	0	0	0	0	0	0	0	0	0	0	0	0	0	0	0	0	0	0

**Lanjutan**

26		8	0	0	0	0	0	0	0	0	0	0	0	0	0	0	0	0	0	0	0	0
27		9	0	0	0	0	0	0	0	0	0	0	0	0	0	0	0	0	0	0	0	0
28	<b>P1J4</b>	1	8	8	8	1	8	8	8	1	8	8	8	1	10	10	8	1	12	12	12	1
29		2	8	6	8	4	8	6	8	4	10	8	9	4	10	8	9	4	12	10	11	4
30		3	8	6	7	6	8	6	7	6	10	8	9	5	10	8	10	5	12	10	11	5
31		4	8	8	8	1	8	8	8	1	8	8	8	1	10	10	10	1	12	12	12	1
32		5	0	0	0	0	0	0	0	0	0	0	0	0	0	0	0	0	0	0	0	0
33		6	0	0	0	0	0	0	0	0	0	0	0	0	0	0	0	0	0	0	0	0
34		7	6	6	6	6	6	6	6	6	8	6	7	6	8	6	8	4	10	8	9	4
35		8	4	1	3	2	4	3	4	2	6	5	6	2	8	7	8	2	10	9	10	2
36		9	0	0	0	0	0	0	0	0	0	0	0	0	0	0	0	0	0	0	0	0
37	<b>P2J1</b>	1	8	8	8	2	10	8	9	2	10	10	10	2	10	10	10	2	12	12	12	2
38		2	8	6	7	3	10	8	9	3	10	10	10	3	10	10	10	3	12	10	11	3
39		3	8	6	7	2	8	6	7	2	8	8	8	2	8	8	8	2	10	10	10	2
40		4	8	8	8	1	8	8	8	1	10	10	10	1	10	10	10	1	12	12	12	1
41		5	8	8	8	1	8	8	8	1	10	10	10	1	10	10	10	1	12	12	12	1
42		6	8	8	8	1	8	8	8	1	8	8	8	1	10	10	10	1	12	12	12	1
43		7	8	8	8	1	8	8	8	1	8	8	8	1	10	10	10	1	12	12	12	1
44		8	6	6	6	1	6	6	6	1	8	8	8	1	10	10	10	1	12	12	12	1
45		9	6	4	5	2	10	4	7	2	10	4	7	2	10	6	8	2	12	8	9	2
46	<b>P2J2</b>	1	8	6	7	4	8	6	7	4	10	8	9	4	10	8	9	4	12	8	11	4
47		2	8	8	8	2	12	8	10	2	12	8	10	2	12	10	11	2	12	12	12	2
48		3	8	8	8	2	8	8	8	2	10	8	9	2	10	10	10	2	12	12	12	2
49		4	6	6	6	1	6	6	6	1	8	8	8	1	8	8	8	1	10	10	10	1
50		5	4	0	2	2	6	4	5	3	8	4	5	3	8	4	6	3	10	8	8	3
51		6	8	6	7	2	8	8	8	2	8	8	8	2	10	8	9	2	12	10	11	2
52		7	8	6	7	2	8	6	7	2	8	6	7	2	10	8	9	2	12	10	11	2
53		8	0	0	0	0	0	0	0	0	0	0	0	0	0	0	0	0	0	0	0	0

**Lanjutan**

54		9	6	6	6	1	8	8	8	1	8	8	8	1	10	10	10	1	12	12	12	1
55	<b>P2J3</b>	1	8	8	8	2	10	8	9	2	10	10	10	2	10	10	10	2	12	12	12	2
56		2	8	2	6	3	8	4	7	3	10	4	7	3	10	6	8	3	12	8	11	3
57		3	8	6	8	4	8	8	8	4	10	8	9	4	10	8	10	4	14	10	12	4
58		4	8	4	6	3	8	6	7	3	8	6	7	3	8	6	7	3	10	8	9	3
59		5	8	8	8	3	8	8	8	3	8	8	8	3	10	8	9	3	12	10	11	3
60		6	8	0	5	4	8	4	7	4	8	4	7	4	10	6	8	4	12	8	10	4
61		7	8	6	8	4	8	8	8	4	8	8	8	4	10	8	9	4	12	8	10	4
62		8	8	8	8	1	8	8	8	1	10	10	10	1	12	12	12	1	14	14	14	1
63		9	6	4	5	6	7	4	6	6	7	5	6	6	9	6	7	6	11	8	9	6
64	<b>P2J4</b>	1	4	4	4	2	6	4	5	2	6	6	6	2	8	6	7	2	8	8	8	2
65		2	8	6	8	4	8	6	8	4	10	8	9	4	10	8	10	4	12	10	12	4
66		3	8	6	7	4	10	8	9	4	10	8	9	4	10	8	9	4	12	10	11	4
67		4	8	6	7	4	10	2	7	5	10	8	9	4	10	8	10	4	12	10	12	4
68		5	8	8	8	1	8	8	8	1	8	8	8	1	8	8	8	1	10	10	10	1
69		6	8	6	8	5	8	8	8	5	8	8	8	5	10	8	9	5	12	10	10	5
70		7	8	8	8	1	8	8	8	1	8	8	8	1	10	10	10	1	12	12	12	1
71		8	8	6	7	5	8	6	8	5	8	6	8	5	10	8	9	5	12	10	11	5
72		9	8	8	8	1	8	8	8	1	8	8	8	1	10	10	10	1	10	10	10	1
73	<b>P3J1</b>	1	0	0	0	0	0	0	0	0	0	0	0	0	0	0	0	0	0	0	0	0
74		2	0	0	0	0	0	0	0	0	0	0	0	0	0	0	0	0	0	0	0	0
75		3	0	0	0	0	0	0	0	0	0	0	0	0	0	0	0	0	0	0	0	0
76		4	3	3	3	1	5	5	5	1	5	5	5	1	7	7	7	1	9	9	9	1
77		5	0	0	0	0	0	0	0	0	0	0	0	0	0	0	0	0	0	0	0	0
78		6	6	6	6	1	6	6	6	1	6	6	6	1	8	8	8	1	8	8	8	1
79		7	0	0	0	0	0	0	0	0	0	0	0	0	0	0	0	0	0	0	0	0
80		8	0	0	0	0	0	0	0	0	0	0	0	0	0	0	0	0	0	0	0	0
81		9	0	0	0	0	0	0	0	0	0	0	0	0	0	0	0	0	0	0	0	0

**Lanjutan**

82	<b>P3J2</b>	<b>1</b>	0	0	0	0	0	0	0	0	0	0	0	0	0	0	0	0	0	0	0	0
83		<b>2</b>	8	6	7	2	8	6	7	2	10	8	9	2	10	10	10	2	12	10	11	2
84		<b>3</b>	0	0	0	0	0	0	0	0	0	0	0	0	0	0	0	0	0	0	0	0
85		<b>4</b>	6	6	6	1	8	4	6	2	8	4	6	2	10	6	8	2	10	8	9	2
86		<b>5</b>	6	6	6	1	6	6	6	1	8	8	8	1	10	10	10	1	12	12	12	1
87		<b>6</b>	0	0	0	0	0	0	0	0	0	0	0	0	0	0	0	0	0	0	0	0
88		<b>7</b>	8	6	7	2	8	8	8	2	8	8	8	2	10	10	10	2	10	10	10	2
89		<b>8</b>	7	6	7	2	7	6	7	2	7	6	7	2	8	7	8	2	10	9	10	2
90		<b>9</b>	0	0	0	0	0	0	0	0	0	0	0	0	0	0	0	0	0	0	0	0
91	<b>P3J3</b>	<b>1</b>	8	8	8	2	8	8	8	2	8	8	8	2	10	10	10	2	12	10	11	2
92		<b>2</b>	0	0	0	0	0	0	0	0	0	0	0	0	0	0	0	0	0	0	0	0
93		<b>3</b>	0	0	0	0	4	4	4	1	4	4	4	1	6	6	6	1	8	8	8	1
94		<b>4</b>	6	6	6	1	6	6	6	1	6	6	6	1	8	8	8	1	10	10	10	1
95		<b>5</b>	0	0	0	0	0	0	0	0	0	0	0	0	0	0	0	0	0	0	0	0
96		<b>6</b>	0	0	0	0	0	0	0	0	0	0	0	0	0	0	0	0	0	0	0	0
97		<b>7</b>	0	0	0	0	0	0	0	0	0	0	0	0	0	0	0	0	0	0	0	0
98		<b>8</b>	0	0	0	0	0	0	0	0	0	0	0	0	0	0	0	0	0	0	0	0
99		<b>9</b>	0	0	0	0	0	0	0	0	0	0	0	0	0	0	0	0	0	0	0	0
100	<b>P3J4</b>	<b>1</b>	0	0	0	0	0	0	0	0	0	0	0	0	0	0	0	0	0	0	0	0
101		<b>2</b>	6	6	6	1	6	6	6	1	8	8	8	1	10	10	10	1	12	12	12	1
102		<b>3</b>	0	0	0	0	0	0	0	0	0	0	0	0	0	0	0	0	0	0	0	0
103		<b>4</b>	6	4	5	3	8	6	7	3	8	6	7	3	10	8	9	3	10	10	10	3
104		<b>5</b>	0	0	0	0	0	0	0	0	0	0	0	0	0	0	0	0	0	0	0	0
105		<b>6</b>	0	0	0	0	0	0	0	0	0	0	0	0	0	0	0	0	0	0	0	0
106		<b>7</b>	8	8	8	1	8	8	8	1	8	8	8	1	10	10	10	1	10	10	10	1
107		<b>8</b>	7	6	7	2	7	6	7	2	7	6	7	2	9	6	8	2	11	8	10	2
108		<b>9</b>	0	0	0	0	0	0	0	0	0	0	0	0	0	0	0	0	0	0	0	0
109	<b>P4J1</b>	<b>1</b>	0	0	0	0	0	0	0	0	0	0	0	0	0	0	0	0	0	0	0	0

**Lanjutan**

110		2	0	0	0	0	0	0	0	0	0	0	0	0	0	0	0	0	0	0	0	0
111		3	0	0	0	0	0	0	0	0	0	0	0	0	0	0	0	0	0	0	0	0
112		4	0	0	0	0	0	0	0	0	0	0	0	0	0	0	0	0	0	0	0	0
113		5	0	0	0	0	0	0	0	0	0	0	0	0	0	0	0	0	0	0	0	0
114		6	0	0	0	0	0	0	0	0	0	0	0	0	0	0	0	0	0	0	0	0
115		7	0	0	0	0	0	0	0	0	0	0	0	0	0	0	0	0	0	0	0	0
116		8	0	0	0	0	0	0	0	0	0	0	0	0	0	0	0	0	0	0	0	0
117		9	0	0	0	0	0	0	0	0	0	0	0	0	0	0	0	0	0	0	0	0
118	<b>P4J2</b>	1	8	6	7	3	8	8	8	2	10	8	9	2	10	8	9	2	12	10	11	2
119		2	0	0	0	0	0	0	0	0	0	0	0	0	0	0	0	0	0	0	0	0
120		3	6	6	6	4	6	6	6	4	8	8	8	3	10	8	9	3	12	10	11	3
121		4	0	0	0	0	0	0	0	0	0	0	0	0	0	0	0	0	0	0	0	0
122		5	0	0	0	0	0	0	0	0	0	0	0	0	0	0	0	0	0	0	0	0
123		6	0	0	0	0	0	0	0	0	0	0	0	0	0	0	0	0	0	0	0	0
124		7	0	0	0	0	0	0	0	0	0	0	0	0	0	0	0	0	0	0	0	0
125		8	0	0	0	0	0	0	0	0	0	0	0	0	0	0	0	0	0	0	0	0
126		9	0	0	0	0	0	0	0	0	0	0	0	0	0	0	0	0	0	0	0	0
127	<b>P4J3</b>	1	0	0	0	0	0	0	0	0	0	0	0	0	0	0	0	0	0	0	0	0
128		2	6	4	5	3	6	4	5	4	8	6	7	4	8	6	8	4	10	8	9	4
129		3	6	2	4	3	6	3	5	2	8	5	7	2	8	5	7	2	10	7	9	2
130		4	8	8	1	1	0	0	0	0	0	0	0	0	0	0	0	0	0	0	0	0
131		5	0	0	0	0	0	0	0	0	0	0	0	0	0	0	0	0	0	0	0	0
132		6	0	0	0	0	0	0	0	0	0	0	0	0	0	0	0	0	0	0	0	0
133		7	0	0	0	0	0	0	0	0	0	0	0	0	0	0	0	0	0	0	0	0
134		8	0	0	0	0	0	0	0	0	0	0	0	0	0	0	0	0	0	0	0	0
135		9	0	0	0	0	0	0	0	0	0	0	0	0	0	0	0	0	0	0	0	0
136	<b>P4J4</b>	1	0	0	0	0	0	0	0	0	0	0	0	0	0	0	0	0	0	0	0	0
137		2	0	0	0	0	0	0	0	0	0	0	0	0	0	0	0	0	0	0	0	0

**Lanjutan**

138		<b>3</b>	6	6	6	1	6	6	6	1	8	8	8	1	8	8	8	1	10	10	10	1
139		<b>4</b>	0	0	0	0	0	0	0	0	0	0	0	0	0	0	0	0	0	0	0	0
140		<b>5</b>	0	0	0	0	0	0	0	0	0	0	0	0	0	0	0	0	0	0	0	0
141		<b>6</b>	8	2	6	3	8	1	5	4	10	3	6	4	10	5	7	4	12	7	9	4
142		<b>7</b>	0	0	0	0	0	0	0	0	0	0	0	0	0	0	0	0	0	0	0	0
143		<b>8</b>	0	0	0	0	0	0	0	0	0	0	0	0	0	0	0	0	0	0	0	0
144		<b>9</b>	0	0	0	0	0	0	0	0	0	0	0	0	0	0	0	0	0	0	0	0

**Lampiran 5.** Hasil sidik ragam

**Tabel A.** Hasil sidik ragam perlakuan penutupan lahan dan jumlah benih terhadap persentase perkecambahan benih Sengon dalam *ballseeding*

Sumber Keragaman	db	JK	KT	Fhitung	Ftabel	
					5%	1%
P	3	20423.392	6807.797	10.792**	2,68	3,93
J	3	1074.245	358.082	0.568 <sup>n</sup>	2,68	3,93
P * J	9	8569.001	952.111	1.509 <sup>n</sup>	1,95	2,54
Galat	128	80748.535	630.848			
Total	143	110815.173				

Keterangan :

<sup>n</sup> = Perlakuan berpengaruh tidak nyata pada taraf 5%

\* = Perlakuan berpengaruh nyata pada taraf 5%

\*\* = Perlakuan berpengaruh nyata pada taraf 1 %

**Tabel B.** Hasil sidik ragam perlakuan penutupan lahan dan jumlah benih terhadap tinggi tanaman Sengon dalam ball seeding

Sumber Keragaman	db	JK	KT	Fhitung	Ftabel	
					5%	1%
P	3	1383.354	461.118	60.255**	2,68	3,93
J	3	77.743	25.914	3.386 *	2,68	3,93
Galat	128	979.556	7.653			
Total	143	2598.438				

Keterangan :

<sup>n</sup> = Perlakuan berpengaruh tidak nyata pada taraf 5%

\* = Perlakuan berpengaruh nyata pada taraf 5%

\*\* = Perlakuan berpengaruh nyata pada taraf 1 %



**Tabel C.** Hasil sidik ragam interaksi perlakuan penutupan lahan dan jumlah benih terhadap tinggi tanaman Sengon dalam ball seeding

Sumber Keragaman	db	JK	KT	Fhitung	Ftabel	
					5%	1%
P * J	15	1607.785	107.186	14.159**	1,95	2,54
Galat	128	968.964	7.570			
Total	143	2576.749				

Keterangan :

*n* = Perlakuan berpengaruh tidak nyata pada taraf 5%

\* = Perlakuan berpengaruh nyata pada taraf 5%

\*\* = Perlakuan berpengaruh nyata pada taraf 1 %

**Tabel D.** Hasil sidik ragam perlakuan penutupan lahan dan jumlah benih terhadap Jumlah Daun tanaman Sengon dalam Ball Seeding

Sumber Keragaman	db	JK	KT	Fhitung	Ftabel	
					5%	1%
P	3	1885.354	628.451	46.914**	2,68	3,93
J	3	149.521	49.840	37.21**	2,68	3,93
Galat	128	1714.667	13.396			
Total	143	4049.660				

**Tabel E.** Hasil sidik ragam interaksi perlakuan penutupan lahan dan jumlah benih terhadap tinggi tanaman Sengon dalam ball seeding

Sumber Keragaman	db	JK	KT	Fhitung	Ftabel	
					5%	1%
P * J	15	2301.810	153.454	11.444**	1,95	2,54
Galat	128	1716.376	13.409			
Total	143	4018.186				

Keterangan :

*n* = Perlakuan berpengaruh tidak nyata pada taraf 5%

\* = Perlakuan berpengaruh nyata pada taraf 5%

\*\* = Perlakuan berpengaruh nyata pada taraf 1 %

**Lampiran 6 : Hasil Analisis Tanah Pada Masing-Masing Perlakuan Penutupan Lahan**



**LABORATORIUM SILVIKULTUR**  
**FAKULTAS KEHUTANAN**  
**UNIVERSITAS HASANUDDIN**  
 Kampus Tamalanrea Jl. Perintis Kemerdekaan Km.10, Makassar  
 Telp. (0411) 589 592, Fax (0411) 589 592

**HASIL ANALISIS CONTOH TANAH**

Nomor : 003/Silvi/2013  
 Permintaan : Nathalius P/ M111 09 274  
 Asal Contoh/Lokasi :  
 Objek : Penelitian  
 Tgl.Penerimaan : 4 Pebruari 2013  
 Tgl.Pengujian Selesai : 14 Pebruari 2013  
 Jumlah : 4 Contoh Tanah

Nomor Contoh			PARAMETER					
Urut	Kode Lab.	Kode Pengirim	Permeabilitas (cm/jam)	C-Organik (%)	Tekstur			
					Pasir (%)	Debu (%)	Liat (%)	Klas Tekstur
1	AL - 1	Piringan	1.80	1.56	40	33	27	Lempung
2	AL - 2	Rumput	1.50	2.44	19	45	36	Lempung Liat Berdebu
3	AL - 3	Alang-alang	2.30	2.29	25	43	32	Lempung Berliat
4	AL - 4	Semak Belukar	1.60	2.43	37	39	24	Lempung

Catatan :

*Hasil pengujian ini hanya berlaku bagi contoh yang diuji dan tidak untuk diperbanyak*

Makassar, 19 Pebruari 2013

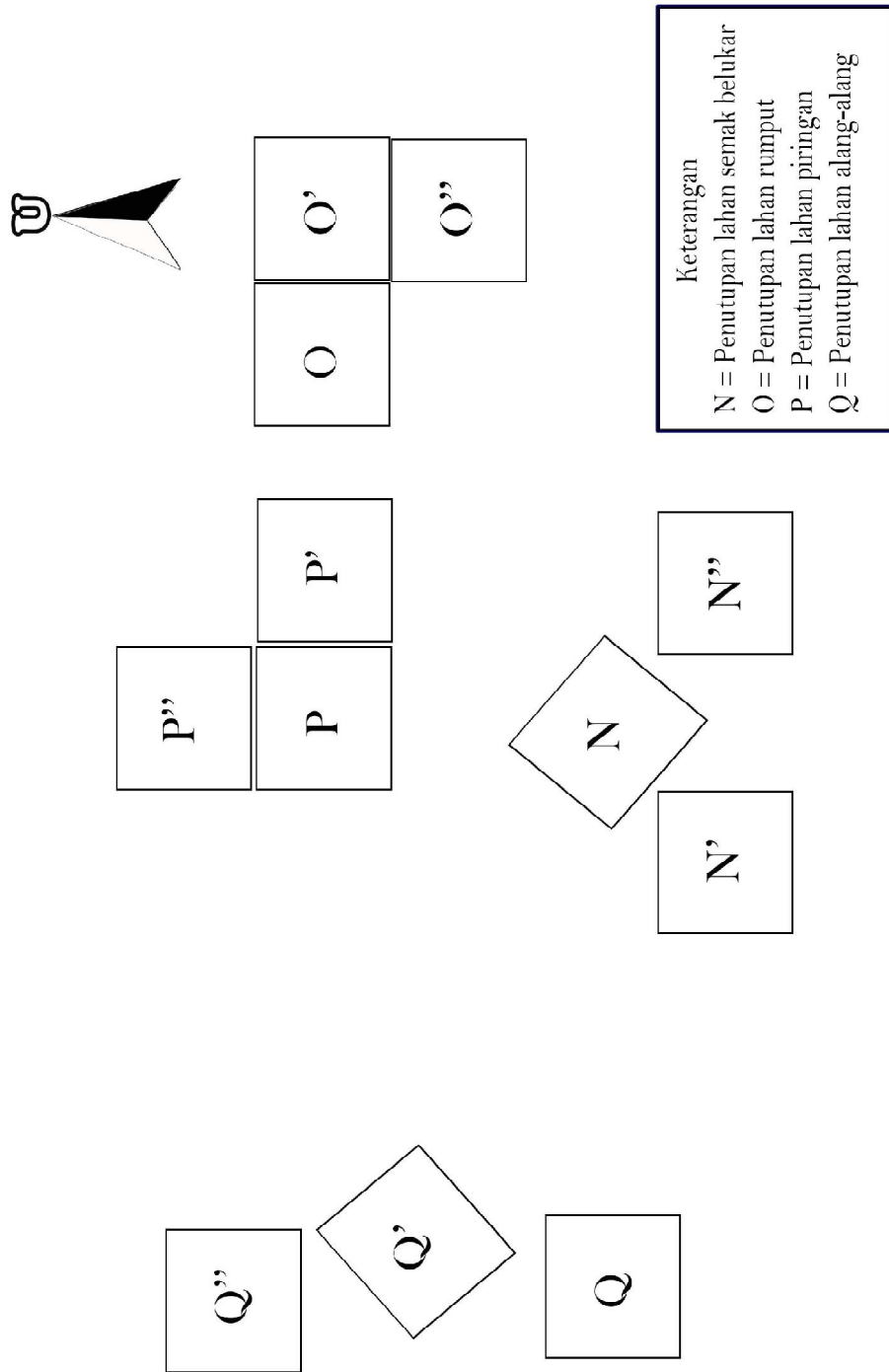
Kepala Laboratorium

a.n/

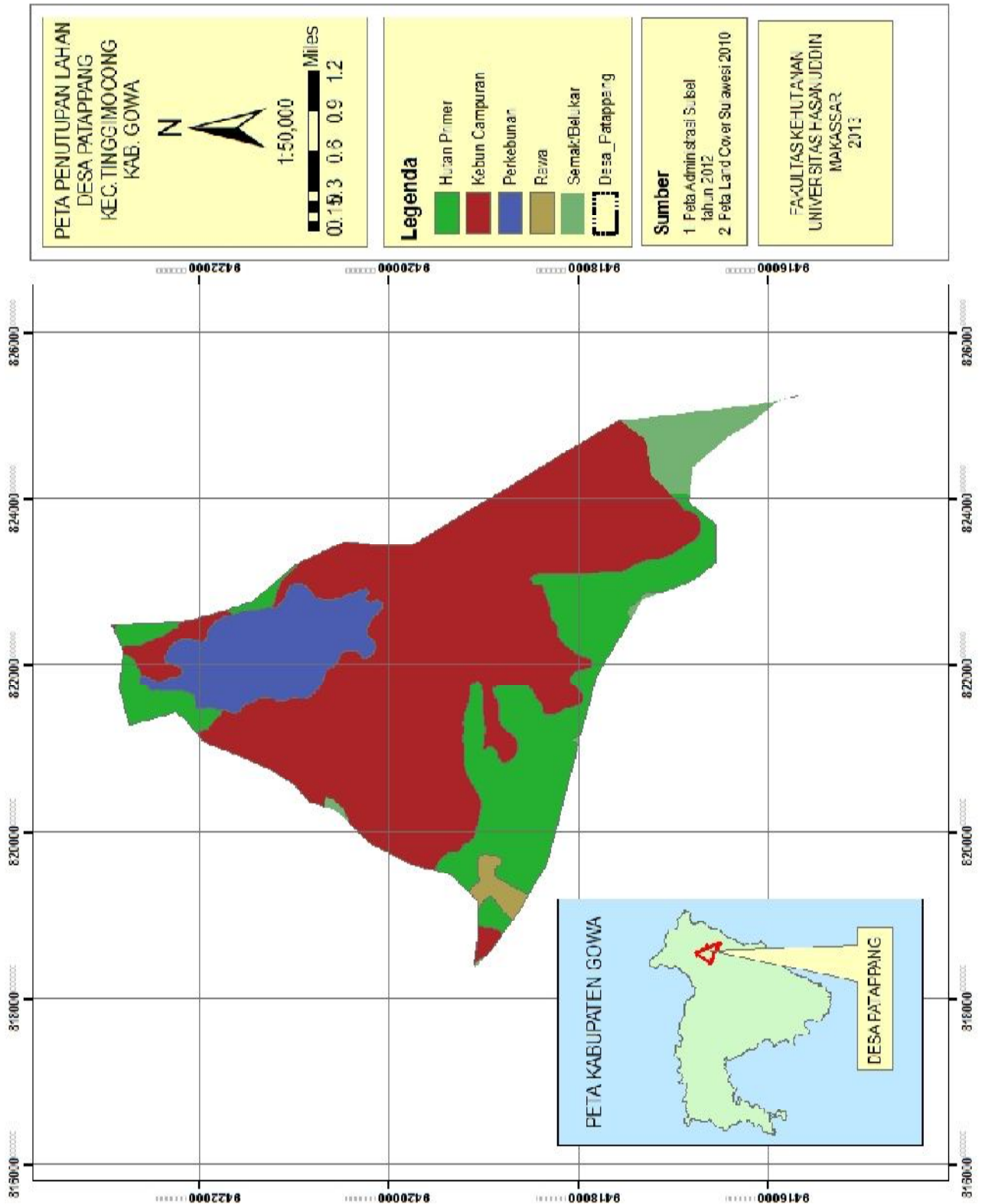
Prof.Dr.Ir. Samuel A. Paembonan  
 Nip. 19530228 197903 1 002

Lampiran 7. Sketsa Plot Penelitian di Lokasi

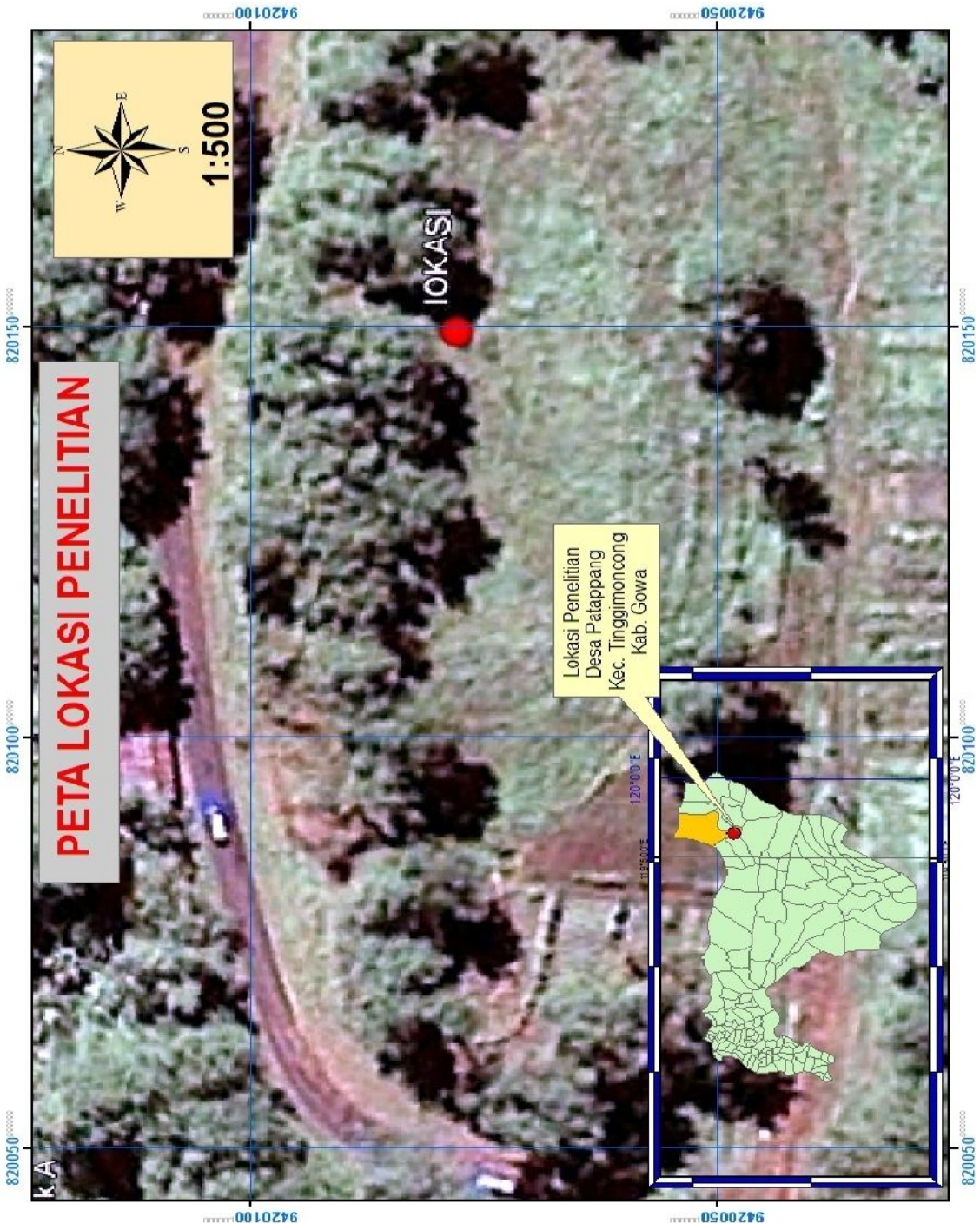
**SKETSA PLOT PENELITIAN**



Lampiran 8. Peta Penutupan Lahan Desa Patappang



Lampiran 9. Peta lokasi penelitian



**Lampiran 10. Foto-foto Penelitian**



**Lanjutan**

