

DAFTAR PUSTAKA

- Adelman, I., and Morris, C. T., 1973. *Economic Growth and Social Equity in Developing Countries*. Stanford: Stanford University Press.
- Alam, S., Sultana, A., and Butt, M.S., 2010. Does Social Expenditures Promote Economic Growth? A Multivariate Panel Cointegration Analysis for Asian Countries. *European Journal of Social Sciences*, Vol. 14, No. 1, 44-54.
- Allen, R., and Tommasi, D. (Eds.), 2001. *Managing Public Expenditure: A Reference Book for Transition Countries*. Paris: OECD.
- Allen, S.L., Badiane, O., and Ulimwengu, J. M., 2012. Government Expenditures, Social Outcomes, and Marginal Productivity of Agricultural Inputs: A Case Study for Tanzania. *IFPRI Discussion Paper 01172*. The International Food Policy Research Institute (IFPRI), West and Central Africa Office.
- Alm, L.R., and Mason, S.G., 2008. Linear Correlation and Regression. In *Handbook of Research Methods in Public Administration*, Edited by Gerald J. Miller and Kaifeng Yang. Boca Raton, FL.: Taylor & Francis Group. Pp.427-454.
- Anand, S., and Ravallion, M., 1993. Human Development in Poor Countries: On the Role of Private Incomes and Public Services. *Journal of Economic Perspectives*, 7(1):133-150.
- Andrews, M., and Shah, A., 2005. Toward Citizen-Centered Local-Level Budgets in Developing Countries. In *Public Expenditure Analysis*, edited by Anwar Shah. Washington DC: The International Bank for Reconstruction and Development /The World Bank. pp. 183-216.
- Anonim, 2013. *General Government Expenditure Statistics*. (Online), (http://epp.eurostat.ec.europa.eu/statistics_explained/index.php/General_government_expenditure_statistics), diakses 24 Januari 2013.
- Anonim, 2012. *Definition of Welfare in Oxford Dictionaries*. (Online), (www.oxforddictionaries.com/..welfare).
- Anonim, 2011. *Expenditure*. (Online), (<http://www.blurtit.com/q522836>), diakses 17 Oktober 2012.

- Asghar, N., Hussain, Z., and Rehman, Hafeez U., 2012. The Impact of Government Spending on Poverty Reduction: Evidence from Pakistan 1972 to 2008. *African Journal of Business Management*, Vol. 6(3), 845-853.
- Baldacci, E., Guin-Siu, M.T., and de Mello, L., 2003. More on the Effectiveness of Public Spending on Health Care and Education: A Covariance Structure Model. *Journal of International Development*, 15, 709–725.
- Bank Dunia, 2012. *Analisis Keuangan Publik Provinsi Sulawesi Tenggara 2012: Kinerja Pelayanan Publik dan Tantangan Pembangunan di Bumi Haluoleo*. Jakarta: Kantor Bank Dunia.
- Bank Dunia, 2007. *Pengelolaan Keuangan Publik di Aceh: Mengukur Kinerja Pemerintah Daerah di Aceh*. Jakarta: Kantor Bank Dunia.
- Bappenas (Badan Perencanaan Pembangunan Nasional), 2011. *Laporan Pencapaian Tujuan Pembangunan Milenium di Indonesia 2010*. Jakarta: Bappenas.
- Barrientos, A., and Scott, J., 2008. *Social Transfers and Growth: A Review*. Working paper 52. Brooks World Poverty Institute, Manchester. (Online), (<http://www.bwpi.manchester.ac.uk/>), diakses 17 Oktober 2012.
- Barro, R.J., 1991. Economic Growth in a Cross Section of Countries. *The Quarterly Journal of Economics*, Vol. 106, No. 2, pp. 407-443.
- Barro, R. J., 1990. Government Spending in a Simple Model of Endogenous Growth. *Journal of Political Economy*, 98(5):103-125.
- Bazzi, S., Sumarto, S., and Suryahadi, A., 2013. *It's All in the Timing: Cash Transfers and Household Expenditures in a Developing Country*. (Online), (www.smeru.or.id/report/workpaper/), diakses 17 Februari 2013.
- Bénabou, R., 2000. Unequal Societies: Income Distribution and the Social Contract. *American Economic Review*, 90(1) (March): 96-129.
- Bernauer, T., and Koubi, V., 2006. *States as Providers of Public Goods: How Does Government Size Affect Environmental Quality?* Working Paper No. 14. Universität Zürich, Center for Comparative and International Studies (CIS).

- Bevir, M., 2007. *Encyclopedia of Governance*. California: Sage Publications, Inc.
- Boateng, N.A., 2012. Public Expenditure Management and Education Outcomes: Micro-evidence from Primary Schools and Public Officials in Gauteng and North West Provinces, South Africa. *A PhD thesis in Public Law*, Johannesburg: University of Witwatersrand.
- Bose, N., Haque, M.E., Osborn, D.R., 2007. Public Expenditure and Economic Growth: A Disaggregated Analysis for Developing Countries. *The Manchester School*, 75, 533–556.
- BPS (Badan Pusat Statistik), 2012. *Perkembangan Beberapa Indikator Utama Sosial-Ekonomi Indonesia, Trends of Selected Socio-Economic Indicators of Indonesia, Mei 2012*. Jakarta: BPS.
- BPS (Badan Pusat Statistik), 2012. *Perkembangan Beberapa Indikator Utama Sosial-Ekonomi Indonesia, Trends of Selected Socio-Economic Indicators of Indonesia, Mei 2012*. Jakarta: BPS.
- BPS (Badan Pusat Statistik), 2011. *Perkembangan Beberapa Indikator Utama Sosial-Ekonomi Indonesia, Trends of Selected Socio-Economic Indicators of Indonesia, Februari 2011*. Jakarta: BPS.
- BPS (Badan Pusat Statistik), 2011a. *Perkembangan Beberapa Indikator Utama Sosial-Ekonomi Indonesia, Trends of Selected Socio-Economic Indicators of Indonesia, November 2011*. Jakarta: BPS.
- BPS (Badan Pusat Statistik) Provinsi Sulawesi Tenggara, 2013. *Sulawesi Tenggara Dalam Angka 2012*. Kendari: BPS Provinsi Sultra.
- BPS (Badan Pusat Statistik) Provinsi Sulawesi Tenggara, 2012a. *Berita Resmi Statistik Provinsi Sulawesi Tenggara No. 05/11/Th.V, 5 November 2012*.
- BPS (Badan Pusat Statistik) Provinsi Sulawesi Tenggara, 2012b. *Berita Resmi Statistik Provinsi Sulawesi Tenggara No. 08/12/Th.V, 5 November 2012 (Keadaan Ketenagakerjaan Agustus)*.
- BPS (Badan Pusat Statistik) Provinsi Sulawesi Tenggara, 2012c. *Berita Resmi Statistik No. 31/05/Th. XV, 7 Mei 2012*.
- BPS (Badan Pusat Statistik) Provinsi Sulawesi Tenggara, 2009. *Sulawesi Tenggara Dalam Angka 2008*. Kendari: BPS Provinsi Sultra.

- BPS (Badan Pusat Statistik) Provinsi Sulawesi Tenggara, 2005. *Sulawesi Tenggara Dalam Angka 2004*. Kendari: BPS Provinsi Sultra.
- Buchanan, James M., 1977. "Why Does Government Grow", in Thomas Borcherding (ed.), *Budgets and Bureaucrats: The Sources of Government Growth*. Durham: Duke University Press.
- Burtless, G., and Smeeding, Timothy M., 2001. The Level, Trend, and Composition of Poverty, in *Understanding Poverty*, edited by Sheldon H. Danziger and Robert H. Haveman. Cambridge: Harvard University Press. Pp. 27-68.
- Caminada, K., and Goudswaard, K.P., 2010, 'How Well is Social Expenditure Targeted to The Poor?', in: P. Saunders and R. Sainsbury (eds.), *Social Security, Poverty and Social Exclusion in Rich and Poorer Countries, International Studies on Social Security*, volume 16, 97-112.
- Cepiku, D., and Mititelu, C., 2010. Public Administration Reforms in Transition Countries: Albania and Romania Between The Weberian Model and The New Public Management. *Transylvanian Review of Administrative Sciences*, No. 30E/2010, pp. 55-78.
- Chavda, K., 2008. Introduction to Data Analysis. In *Handbook of Research Methods in Public Administration*. Edited by Gerald J. Miller and Kaifeng Yang. Boca Raton: Taylor & Francis Group. Pp. 350-360.
- Chimobi, O.P., 2009. Government Expenditure and National income: A Causality Test for Nigeria. *European Journal of Economic and Political Studies*, Vol. 2 (2): 1-11.
- Chimombo, J.P.G., 2005. "Issues in Basic Education in Developing Countries: An Exploration of Policy Options for Improved Delivery". *Journal of International Cooperation in Education*, Vol.8, No.1, (2005) pp.129-152.
- Crafts, N., 1997. The Human Development Index and Changes in Standard of Living: Some Historical Comparisons. *European Review of Economic History*, Vol 1, 299-322.
- Creswell, J. D., 2003. *Research Design: Qualitative, Quantitative, and Mixed Methods Approaches*. London: Sage Publications.
- Curtain, R., 2000. Good Public Policy Making: How Australia Fares. *Agenda: A Journal of Policy Analysis and Reform*, Volume 8, Number 1, pp. 33-46.

- de Sismondi, S.J.C.L., 1815. *Political Economy*. Rod Hay's Archive for the History of Economic Thought. McMaster University, Canada.
- de Walle, D. van, 2012. *Public Spending and The Poor: What We Know, What We Need To Know*. Washington D.C.: Policy Research Department, The World Bank.
- Denhardt, R.B. and Denhardt, Janet V., 2006. *Public Administration: An Action Oriented*. Fifth Edition. Belmont: Thomson Higher Education.
- Depdiknas (Departemen Pendidikan Nasional), 2007. *Sistem Pendidikan Nasional*. (Online pada <http://www.unindra.ac.id/?q=node/37>).
- Deutsche Bank Research, 2006. *Measures of Well-Being: There is More to It than GDP*. (Online at www.dbresearch.com).
- Devarajan, S., Swaroop, V., Zou, H.F., 1996. The Composition of Public Expenditure and Economic Growth. *Journal of Monetary Economics*, 37, 313–344.
- Drechsler, W. 2009. Towards a Neo-Weberian European Union? Lisbon Agenda and Public Administration. *Halduskultuur*, Vol 10, pp. 6-21.
- Easterly, W. and Rebelo, S., 1999. Fiscal Policy and Economic Growth: An Empirical Investigation. *Journal of Monetary Economics*, 32 (December), 417-458.
- Economic and Social Inclusion Corporation, 2009. *What Is Poverty*. (Online), (http://www2.gnb.ca/.../what_is_poverty.html), diakses 22 Juni 2013.
- Eisenhauer, Joseph G., 2003. Regression through the Origin. *Teaching Statistics*. Volume 25, Number 3, Autumn 2003, pp. 76-80.
- Evans, D.B, *et al.*, 2001. The Comparative Efficiency of National Health Systems in Producing Health: An Analysis of 191 Countries. GPE Discussion PaperNo. 29 World Health Organization: Geneva. (Online), (http://www3.who.int/whosis/discussion_papers/discussion_pa-pers.cfm), diakses 12 Desember 2012.
- Evans, P. B., Rueschemeyer, D., & Skocpol, T. (Eds.), 1999. *Bringing the State Back In*. Cambridge, UK: Cambridge University Press.
- Fan, S. and Saurkar, A., 2003. Public Spending in Developing Countries: Trends, Determination, and Impact. *Working paper*. International Food Policy Research.

- Fan, S., Huong, P.L., and Long, T.Q., 2000. Government Spending and Poverty Reduction in Vietnam. Project report prepared for the World Bank. International Food Policy Research Institute, Washington DC.
- Fan, S., Omilola, B. & Lambert, M., 2009. Public Spending for Agriculture in Africa: Trends and Composition. Regional Strategic Analysis and Knowledge Support System (ReSAKSS) Working Paper No. 28. International Food Policy Research Institute, Washington, DC.
- Fukuyama, F., 2004. The Imperative of State-Building. *Journal of Democracy*, 15 (2), April 2004, 17-31.
- Galindo, Miguel-Ángel, 2009. Objectives of Government Policy. In International Encyclopedia of Public Policy Volume 3 – Public Policy and Political Economy. Edited by Phillip A. O’Hara. Perth, Australia: Global Political Economy Research Unit. Pp. 467-478.
- Ganelli, G., and Tervala, J., 2007. *Public Infrastructures, Public Consumption, and Welfare in a New-Open-Economy-Macro Model*. International Monetary Fund (IMF) Working Paper, WP/07/67.
- Gargan, J.J., 2007. The Public Administration Community and the Search for Professionalism. In *Handbook of Public Administration*. Edited by Jack Rabin, W. Bartley Hildreth, and Gerald J. Miller. Boca Raton: Taylor & Francis Group, LLC., pp. 1125-1204.
- Ghosh, S., and Gregoriou, A., 2008. The Composition of Government Spending and Growth: is Current or Capital Spending Better? *Oxford Economic Papers*, 60: 484–516.
- Gomanee, K., S. Girma, and O. Morrissey, 2005. Aid, Public Spending and Human Welfare: Evidence from Quantile Regressions. *Journal of International Development*, 17: 299-309.
- Grigoli, F., 2012. Public Expenditure in the Slovak Republic: Composition and Technical Efficiency. *IMF Working Paper, WP/12/173*. Washington: International Monetary Fund.
- Guisan, M., and Exposito, P., 2010. Health Expenditure, Education, Government Effectiveness and Quality of Life in Africa and Asia. *Regional and Sectoral Economic Studies*, Vol. 10 (1), 115-126.

- Gulick, L., 1987. Notes on the Theory of Organization, in *Classics of Organization Theory*, edited by Jay M. Shafritz and J. Steven Ott. California: The Dorsey Press, pp. 87-97.
- Gupta, S., Clements, B., and Tiongson, E., 1998. Public Spending on Human Development. *Finance & Development*, September 1998, pp. 10-13.
- Hassan, G.M. 2009. *Public Expenditure, Employment and Poverty in Bangladesh: An Empirical Analysis*. Draft of the research report. (Online), (www.undp.org.bd/.../pub%20exp.pdf), diakses 12 Februari 2012.
- Hatta, 2013. *Pola Konsumsi Kelas Menengah Indonesia Berubah*. (Online pada www.republika.co.id > ekonomi > Ritel), diakses 6 Maret 2013.
- Henry, N., 2004. *Public Administration and Public Affairs*. New Jersey: Prentice Hall, Inc.
- Herner, T., 2008. *Understanding Organization as Process: Theory for A Tangled World*. London: Roudledge.
- Heshmati, A., 2004. *Inequalities and Their Measurement*. Discussion Paper Series No. 29, Institute for the Study of Labor, July 2004. Bonn, Germany
- Hoban, M., James, V., Pattrick, K., and Fleming, J., 2011. *Voices on Well-Being: A Report of Research with Older People*. Centre for Social Action, De Montfort University. (Online), (wrvs.org.uk/shapingourage), diakses 12 Februari 2012.
- Hong, H., and Ahmed, S., 2009. Government Spending on Public Goods: Evidence on Growth and Poverty. *Economic & Political Weekly*, August 1, Vol. XLIV, No. 31, 102-108.
- Hossain, F., 2007. *What Has Happened to Development Administration? Some Critical Reflections*. IDPM Discussion Paper Series, Paper No. 72. (Online), (<http://www.idpm.man.ac.uk>), diakses 12 Februari 2012.
- Hu, B., and Mendoza, R.U., 2010. *Public Spending, Governance and Child Health Outcomes: Revisiting the Links*. Unedited Discussion Draft / Not For Quotation, April, Unicef Policy And Practice.

- Hwang, J., 2011. A Cross-Country Analysis of Human Capital Inequality and the Composition of Education Expenditure. *European Journal of Social Sciences*, Volume 24, Number 1, 97-101.
- IMF (International Monetary Fund), 2003. *Country Assessment And Action Plan (AAP) for HIPCs, Questionnaire, Benchmarks, Explanations, Standard Tables*. (Online), (jbrumby@imf.org), diakses 11 Oktober 2012.
- Instruksi Menteri Dalam Negeri Nomor 6 Tahun 1999 tentang Pedoman Penyusunan APBD Tahun Anggaran 2000.
- Irmen, A., and Kuehnel, J., 2008. *Productive Government Expenditure and Economic Growth*. Discussion Paper Series No. 464. University of Heidelberg, Department of Economics. (Online), (www.uni-heidelberg.de/.../dp464.pd...), diakses 11 Oktober 2012.
- Jaroensathapornkul, J., 2010. Spending for Growth: An Empirical Evidence of Thailand. *Applied Economics Journal*, 17 (2): 27-44.
- Jordan, B., 2008. *Welfare and Well-Being: Social Value in Public Policy*. Bristol, UK: The Policy Press.
- Kakwani, N., and Son, H., 2005. On Measures of Inequality and Poverty with Welfare Implications. In *Public Expenditure Analysis*. Anwar Shah (Editor). Washington DC: The International Bank for Reconstruction and Development /The World Bank. Pp. 33-48.
- Keefer, P., and Khemani, S., 2007. *Democracy, Public Expenditures and the Poor*. Prepared as a background study for the World Development Report 2004: Making Services Work for Poor People. Washington, D.C.: The World Bank.
- Keller, L. F., 2007. Public Administration and the American Republic: The Continuing Saga of Management and Administration in Politics. In *Handbook of Public Administration*, Edited by Jack Rabin, W. Bartley Hildreth, and Gerald Miller. Boca Raton, F.L.: Taylor & Francis Group, LLC., pp. 3.48.
- Kementerian Komunikasi dan Informatika RI, 2011. Program Penanggulangan Kemiskinan Kabinet Indonesia Bersatu II. Jakarta: Kementerian Komunikasi dan Informatika.
- Kementerian Perencanaan Pembangunan Nasional RI, 2011. *Laporan Pencapaian Tujuan Pembangunan Milenium Di Indonesia 2010*. Jakarta: Kementerian Perencanaan Pembangunan Nasional.

- Kenworthy, L., 1999. Do Social-Welfare Policies Reduce Poverty? A Cross-National Assessment. *Social Forces*, 77(3): 1119-1139.
- Keputusan Menteri Dalam Negeri Nomor 29 Tahun 2002 Tentang Pedoman Pengurusan, Pertanggungjawaban dan Pengawasan Keuangan dan Belanja Daerah, Pelaksanaan Tata Usaha Keuangan Daerah dan Penyusunan Perhitungan APBD.
- Keputusan Menteri Dalam Negeri Nomor 120-2818 Tahun 2013 Tentang Penetapan Peringkat dan Status Kinerja Penyelenggaraan Pemerintahan Daerah Secara Nasional Tahun 2011.
- Keputusan Menteri Dalam Negeri Nomor 100-279 Tahun 2012 Tentang Penetapan Peringkat dan Status Kinerja Penyelenggaraan Pemerintahan Daerah Secara Nasional Tahun 2010.
- Key, V.O. Jr., 1940. The Lack of a Budgetary Theory. *American Political Science Review*, 34 (6): 1137-1140.
- Khan, M.J., Javid, A., Ahmed, U., and Farooq, S., 2009. Size of Government Spending and Human Capital Inequality: Evidence from Cross Sectional and Panel Data Analysis. *European Journal of Social Sciences – Volume 9, Number 2*, 300-322.
- Khodr, H., 2005. *Public Administration and Political Science: An Historical Analysis of The Relation Between The Two Academic Disciplines*. A Dissertation submitted to The Askew School of Public Administration and Policy, Florida State University.
- King, R., and Rebelo, S., 1993. Public Policy and Economic Growth: Developing Neoclassical Implications, *Journal of Political Economy*, 98, 126–151.
- Kirchner, S., 2011. *Why Does Government Grow?* CIS Policy Monographs PM117, Centre for Independent Studies (Australia).
- Kompasiana, 2012. *Kelas Menengah dan Perilaku Konsumtif*. (Online), (<http://ekonomi.kompasiana.com/bisnis/2012/01/17/kelas-menengah-dan-perilaku-konsumtif-428023.html>), diakses 12 Maret 2013.

- Lavrakas, P.J. (editor), 2008. *Encyclopedia of Survey Research Methods. Volumes 1 & 2*. London: Sage Publications, Inc.
- Leland, S., 2005. Fiscal Characteristics of Public Expenditures. In *Handbook of Public Sector Economics*, Donijo Robbins (editor). Boca Raton: Marcel Dekker/CRC Press LLC. Pp. 271-290.
- Levine, R., and Renelt, D., 1992. A Sensitivity Analysis of Cross-Country Growth Regressions. *American Economic Review*, 82(4): 942-63.
- Lewis, C. W., 2007. "The Field of Public Budgeting and Financial Management 1789-2004", in *Handbook of Public Administration*. Edited by Jack Rabin, W. Bartley Hildreth, and Gerald Miller. Boca Raton, CRC Press Taylor & Francis Group, pp. 151-226.
- LGID (Local Government Improvement and Development), 2010. *The Role of Local Government In Promoting Wellbeing*. London: LGID. (Online), (www.local.gov.uk), diakses 12 Februari 2012.
- Li, H. Y., Squire, L., and Zou, H., 1998. Explaining International and Intertemporal Variations in Income Inequality. *The Economic Journal*, 108 (January), 26-43.
- López, R. 2005. Why Governments Should Stop Non-social Subsidies: Measuring Their Consequences for Rural Latin America. *World Bank Policy Research Working Paper No. 3609*. Washington, DC: World Bank.
- Lund, F., 2002. 'Crowding in' Care, Security and Micro-Enterprise Formation: Revisiting the Role of the State in Poverty Reduction and Development. *Journal of International Development*, 14(6): 681-692.
- Marini, F., 2000. Public Administration. In *Defining Public Administration: Selections from the International Policy and Administration*. Edited by Jay M. Shafritz. Colorado: Westview Press. pp. 3-16.
- McKay, A., 2002. *Defining and Measuring Inequality*. Inequality Briefing, Briefing Paper No 1. Economists' Resource Centre (ERC), Department for International Development, Overseas Development Institute (Online), (www.odi.org.uk), diakses 12 Februari 2012.
- McKinney, J. B., and Howard, G., 1998. *Public Administration: Balancing Power And Accountability*. Westport: Praeger Publishers.

- McNabb, David E., 2002. *Research Method In Public Administration and Non Profit Management: Qualitative and Quantitative Approach*. London. ME Sharpe Inc.
- Mello, Luiz de, and Tiongson, Erwin R., 2003. *Income Inequality and Redistributive Government Spending*. IMF Working Paper, WP/03/14.
- Mohammadi, T., Maleki, B., and Gashti, Hadi P., 2012. The Effect of Government Expenditure Composition On Economic Growth: Evidence on ECO Countries. *Economics and Finance Review*, Vol. 2(5), 14-21.
- Morris, D., 1978. A Physical Quality of Life Index. *Urban Ecology*, Volume 3, Issue 3, 225–240.
- Neraca, 07 Maret 2013. *Kelas Menengah Indonesia Meningkatkan Dua Kali*, 1. (Online) (www.neraca.co.id/.../2020.Kelas.Menengah...), diakses 13 Maret 2013.
- Neter, J., Wasserman, W., and Kutner, M.H., 1989. *Applied Linear Regression Models*, second edition. Illinois: Irwin.
- Notoatmodjo. 2003. *Pendidikan dan Perilaku Kesehatan*. Jakarta: Rineka Cipta.
- OECD (Organisation For Economic Co-Operation And Development), 2001. *The Well-being of Nations: The Role of Human and Social Capital*. Paris: OECD.
- OECD (Organisation for Economic Co-operation and Development), 1998. *National Accounts, Detailed Tables, 2, 1982–96*. Paris: OECD.
- Parhusip, B., 2008. Tinjauan Umum Realisasi APBN Tahun 2007 dan Implikasinya Terhadap Perekonomian Agregat. *Jurnal Ekonomi*, Tahun XIII, Maret, Hlm. 27-39.
- Paternostro, S., Rajaram, A., and Tiongson, Erwin R., 2007. Does the Composition of Public Spending Matter? *Oxford Development Studies*, (35) 1, 47-82.
- Peraturan Pemerintah Republik Indonesia Nomor 7 Tahun 2008 Tentang Dekonsentrasi dan Tugas Pembantuan.

- Peraturan Pemerintah Republik Indonesia Nomor 58 Tahun 2005 tentang Pengelolaan Keuangan Daerah.
- Peraturan Pemerintah Republik Indonesia Nomor 105 Tahun 2000 Tentang Pengelolaan dan Pertanggungjawaban Keuangan Daerah.
- Peraturan Menteri Dalam Negeri Nomor 73 Tahun 2009 Tentang Tatacara Pelaksanaan Evaluasi Kinerja Penyelenggaraan Pemerintahan Daerah
- Peraturan Menteri Dalam Negeri Nomor 59 Tahun 2007 Tentang Perubahan Atas Peraturan Menteri Dalam Negeri Nomor 13 Tahun 2006 Tentang Pedoman Pengelolaan Keuangan Daerah.
- Peraturan Menteri Dalam Negeri Nomor 13 Tahun 2006 Tentang Pedoman Pengelolaan Keuangan Daerah.
- Pilegge, J. C., 1997. Budget Reforms. In Jack W. Rabin, Bartley Hildreth & Gerald Miller (Eds.), *Handbook of Public Administration*. New York: Marcel Dekker. pp. 67-94.
- Pollitt, C. and Bouckaert, G. 2011. *Public Management Reform: A Comparative Analysis - New Public Management, Governance, and the Neo-Weberian State*. Oxford: Oxford University Press.
- Pollitt, C. and Bouckaert G. 2004. *Public Management Reform: A Comparative Analysis*. Oxford: Oxford University Press.
- Prabhu, K.S., 2009. *Monitoring dan Pelaporan Seputar Pembangunan Manusia (Human Development)*. (Online), (www.undp.or.id/.../Monitoring%20&%20Reporting%20on...), diakses 12 Februari 2012.
- Prasetya, F., and Pangestuty, Farah W., 2012. Linkages Between Public Sector Expenditure on Economic Growth and Rural Poverty of Indonesia. *Journal of Basic and Applied Scientific Research*, 2(3), 2347-2353.
- Rajkumar, A.S., and Swaroop, V., 2008. Public Spending and Outcomes: Does Governance Matter? *Journal of Development Economics*, 86, 96–111.
- Rakhmat, 2012. *Dimensi Strategis Manajemen Pembangunan*. Yogyakarta: Graha Ilmu.

- Rasul, S., 2003. *Pengintegrasian Sistem Akuntabilitas Kinerja dan Anggaran dalam Perspektif UU No. 17/2003 Tentang Keuangan Negara: Problem dan Solusi Penganggaran di Indonesia*. Jakarta: Percetakan Negara Republik Indonesia.
- Ray, S., and Ray, I.A., 2012. On the Relationship Between Government's Developmental Expenditure and Economic Growth in India: A Cointegration Analysis. *Advances in Applied Economics and Finance*, Vol. 1, No. 2, 86-94.
- Riccucci, N.M., 2008. The Logic of Inquiry in the Field of Public Administration. In *Handbook of Research Methods in Public Administration*, Edited by Gerald J. Miller & Kaifeng Yang. Boca Raton: CRC Press, pp. 3-11.
- Rodman, Peter W., 1968. *Development Administration: Obstacles, Theories, and Implications for Planning*. Paris: International Institute for Educational Planning.
- Roine, J., Vlachos, J., and Waldenström, D., 2009. The Long-Run Determinants of Inequality: What Can We Learn From Top Income Data. *Journal of Public Economics*, 93: 974–988.
- Rosenbloom, David H. and Kravchuk, R.S., 2005. *Public Administration: Understanding Management, Politics, and Law in the Public Sector*. Boston: McGraw-Hill.
- Rowse, M., 2013. *Public Spending Must Follow the Golden Rule”: The Budget's Unanswered \$68 billion Question*. (Online), (http://www.rowse.com.hk/budget_question.htm), diakses 13 Maret 2013.
- Ruggeri, G., 2005. Public Expenditure Incidence Analysis. In *Public Expenditure Analysis*. Anwar Shah (Editor). Washington DC: The International Bank for Reconstruction and Development/The World Bank, pp. 1-32.
- Sadowski, Eric A., 2010. "A Time Series Analysis: Exploring the Link between Human Activity and Blood Glucose Fluctuation". *Theses and Dissertations (Comprehensive)*. Wilfrid Laurier University, Canada, paper 1021. (Online), (<http://scholars.wlu.ca/etd>), diakses 10 Januari 2013.
- Schultz, D., 2004. *Encyclopedia of Public Administration and Public Policy*, New York: Facts On File, Inc.

- Semmler, W., Greiner, A., Diallo, B., Rezai, A., and Rajaram, A., 2007. *Fiscal Policy, Public Expenditure Composition, and Growth: Theory and Empirics*. Policy Research Working Paper 4405. The World Bank, Africa Region Public Sector Governance Department.
- Sen, A.K., 1979. Personal Utilities and Public Judgement: or What's Wrong With Welfare Economics?. *The Economic Journal*, 89 (September), 537-558.
- Sennoga, E. B., and Matovu, J.M., 2010. *Public Spending Composition and Public Sector Efficiency: Implications for Growth and Poverty Reduction in Uganda*. Economic Policy Research Centre. Research Series No. 66. (Online), ([http://www.searchworks.stanford.edu/...](http://www.searchworks.stanford.edu/)), diakses 12 Februari 2012.
- Shah, A. (Editor), 2005. *Public Expenditure Analysis*. Public Sector Governance and Accountability Series. Washington DC: The International Bank for Reconstruction and Development /The World Bank.
- Sharp, R., 2003. *Budgeting for Equity: Gender Budget Initiatives Within A Framework of Performance Oriented Budgeting*. New York: United Nations Development Fund for Women (UNIFEM).
- Smith, A., 1776. *An Inquiry into the Nature and Causes of The Wealth of Nations*. Hampshire: Harriman House Ltd.
- Steuer, N., and Marks, N., 2008. *Local Wellbeing: Can We Measure It?* The Local Wellbeing Project, (Online), (well-being@neweconomics.org), diakses 12 Februari 2012.
- Stiglitz, J.E., 1984. *The Theory of Local Public Goods Twenty-Five Years After Tiebout: A Perspective*. National Bureau of Economic Research, Inc in its series NBER Working Papers with number 0954. Massachusetts Avenue Cambridge
- Stiglitz, J. E., 1988. *Economics of the Public Sector*. New York: WW Norton and Company.
- Suweda, I Ketut, 2012. Kelas Menengah dan Perilaku Konsumtif. (Online), (ekonomi.kompasiana.com/.../2012/.../17/), diakses 13 Maret 2013.
- Taban, S., 2010. An Examination of the Government Spending and Economic Growth Nexus for Turkey Using the Bound Test Approach. *International Research Journal of Finance and Economics*, 48, 184-193.

- Tanzi, V., 2008. The Role of the State and Public Finance in the Next Generation. *OECD Journal on Budgeting*, Volume 8 – No. 2, 1-27.
- The World Bank Group, 2012. *Expense (% of GDP)*. (Online), (<http://data.worldbank.org/indicator/GC.XPN.TOTL.GD.ZS/>) diakses 10 Oktober 2012.
- The World Bank, 2012. *World Development Indicators 2012*. Washington, D.C., The International Bank for Reconstruction and Development/ The World Bank
- The World Bank, 2007. *Kajian Pengeluaran Publik Indonesia: Memaksimalkan Peluang Baru, Kajian Pengeluaran Publik Indonesia 2007*. Jakarta: The World Bank Office.
- The World Bank, 2003. *PREMnotes Public Sector*. Number 78, February 2003.
- Tikson, D. T., 1998. *Dependent Development of Indonesia, Malaysia and Thailand 1967-1996 and The Downturn of Indonesian Economy in 1997*. Dissertation. Mississippi, USA: Mississippi State University.
- Tsay, R. S., 2005. *Analysis of Financial Time Series*. New Jersey: John Wiley & Sons, Inc.
- ul Haq, M., 1978. The Poverty Curtain: Choices for the Third World. *The Journal of Asian Studies*, Vol. 37, Issue 03, 493-494.
- Undang-Undang Republik Indonesia Nomor 23 Tahun 2011 tentang Pengelolaan Zakat.
- Undang-Undang Republik Indonesia Nomor 22 Tahun 2006 Tentang Pertanggungjawaban Atas Pelaksanaan APBN Tahun Anggaran 2004.
- Undang-Undang Republik Indonesia Nomor 17 Tahun 2003 tentang Keuangan Negara.
- Undang-Undang Republik Indonesia Nomor 29 Tahun 2002 Tentang Anggaran Pendapatan dan Belanja Negara (APBN) Tahun Anggaran 2003.
- Undang-Undang Republik Indonesia Nomor 1 Tahun 2002 tentang Perubahan Atas Undang-Undang Nomor 35 Tahun 2000 tentang APBN Tahun Anggaran 2001.

- UNDP (United Nations Development Program), 2011. *Human Development Report 2011, Sustainability and Equity: A Better Future for All*. New York: UNDP.
- van de Valle, D., 1998. Assessing the Welfare Impacts of Public Spending. *World Development*, Vol. 26, No. 3, pp. 365-379.
- Vigoda, E., 2002. The Legacy of Public Administration Background and Review. In *Public Administration: An Interdisciplinary Critical Analysis*, edited by Eran Vigoda. New York: Marcel Dekker, Inc., pp 1-18.
- Waldo, D., 1996. *Pengantar Studi Public Administration*. Jakarta: Bumi Aksara.
- Williams, D., 2008. Forecasting Methods for Serial Data. In *Handbook of Research Methods in Public Administration*, edited by Gerald J. Miller & Kaifeng Yang. Boca Raton, FL.: Taylor & Francis Group, LLC, 595-666.
- Yang, K., Zhang, Y. and Holzer, M., 2008. Dealing with Multiple Paradigms in Public Administration Research. In *Handbook of Research Methods in Public Administration*, edited by Gerald J. Miller & Kaifeng Yang. Boca Raton: CRC Press, pp. 25-43.
- Yaqub, J.O, Ojapinwa, T.V., and Yussuff, R.O., 2012. Public Health Expenditure and Health Outcome in Nigeria: The Impact of Governance. *European Scientific Journal*, June edition, Vol. 8, No.13, 189-201.
- Yin, R.K., 2011. *Qualitative Research: From Start to Finish*. New York: The Guilford Press.

Lampiran 1. Lembar data Log Belanja Pemerintah dan Tingkat Kesejahteraan Rakyat Sulawesi Tenggara, Tahun 2001-2011.

	BTF	BBJ	BUP	PDRBK	PRP	IMHF	IPM	AKMS	APM	AKBA	AKI
2001	1,3189	2,8604	2,9127	0,5768	-0,5376	1,9171	1,7987	1,4302	1,8836	1,0149	2,4942
2002	1,4615	3,0901	2,9724	0,6229	-0,5686	1,9213	1,8069	1,3842	1,8883	0,9638	2,5172
2003	1,9067	3,0381	3,1704	0,6668	-0,5686	1,9265	1,8156	1,3587	1,8881	0,9638	2,4249
2004	2,0852	2,7608	3,2371	0,7275	-0,5850	1,9282	1,8241	1,3402	1,8871	0,9122	2,3674
2005	2,185	3,1098	3,2271	0,8034	-0,5528	1,9297	1,8293	1,3614	1,8995	0,8261	2,2923
2006	2,2686	3,7537	3,4087	0,8693	-0,5229	1,9368	1,8312	1,3677	1,9022	0,8021	2,2878
2007	2,5256	3,5085	3,5835	0,9308	-0,4559	1,9379	1,8345	1,3290	1,9018	0,7853	2,2068
2008	2,6362	3,8864	3,6215	1,0143	-0,4815	1,9428	1,8388	1,2907	1,9049	0,8388	1,9031
2009	2,5762	3,6537	3,6433	1,0683	-0,4437	1,938	1,8421	1,2772	1,9062	0,8573	1,8751
2010	2,7111	3,7137	3,6463	1,104	-0,3768	1,9464	1,8451	1,2317	1,909	0,8388	1,8633
2011	2,7838	3,8063	3,7014	1,1482	-0,3872	1,9509	1,8485	1,1632	1,9063	0,7924	1,8195

Lampiran 2. Persentase penduduk yang hidup di bawah garis kemiskinan menurut Provinsi di Indonesia, tahun 1999-2011.

PROVINSI	1999	2004	2007	2008	2009	2010	2011
NAD	14.80	28.47	26.65	23.53	21.80	20.98	19.57
Sumut	16.80	14.93	13.90	12.55	11.51	11.31	11.33
Sumbar	13.30	10.46	11.90	10.67	9.54	9.50	9.04
Riau	14.10	13.12	11.20	10.63	9.48	8.65	8.47
Jambi	26.70	12.45	10.27	9.32	8.77	8.34	8.65
Sumsel	23.50	20.92	19.15	17.73	16.28	15.47	14.24
Bengkulu	19.90	22.39	22.13	20.64	18.59	18.30	17.50
Lampung	29.10	22.22	22.19	20.98	20.22	18.94	16.93
Babel	-	9.07	9.54	8.58	7.46	6.51	5.75
Kepri	-	-	10.30	9.18	8.27	8.05	7.40
DKI Jakarta	4.00	3.18	4.61	4.29	3.62	3.48	3.75
Jabar	19.80	12.10	13.55	13.01	11.96	11.27	10.65
Jateng	28.50	21.11	20.43	19.23	17.72	16.56	15.76
DIY	26.10	19.14	18.99	18.32	17.23	16.83	16.08
Jatim	29.50	20.08	19.98	18.51	16.68	15.26	14.23
Banten	-	8.58	9.07	8.15	7.64	7.16	6.32
Bali	8.60	6.85	6.63	6.17	5.13	4.88	4.20
NTB	33.00	25.38	24.99	23.81	22.78	21.55	19.73
NTT	46.90	27.86	27.51	25.65	23.32	23.03	21.23
Kalbar	26.20	13.91	12.91	11.07	9.30	9.02	8.60
Kalteng	15.10	10.44	9.38	8.71	7.02	6.77	6.56
Kalsel	14.50	7.19	7.01	6.48	5.12	5.21	5.29
Kaltim	20.20	11.57	11.04	9.51	7.73	7.66	6.77
Sulut	18.20	8.94	11.42	10.10	9.79	9.10	8.51
Sulteng	28.70	21.69	22.42	20.75	18.98	18.07	15.83
Sulsel	18.30	14.90	14.11	17.73	12.31	11.60	10.29
SULTRA	29.50	21.90	21.33	19.53	18.93	17.05	14.56
Gorontalo	-	29.01	27.35	24.88	25.01	23.19	18.75
Sulbar	-	-	19.03	16.73	15.29	13.58	13.89
Maluku	46.40	32.13	31.14	29.55	28.23	27.74	23.00
Malut	-	12.41	11.97	11.28	10.36	9.42	9.18
Papua Barat	-	-	39.31	35.12	35.71	34.88	31.92
Papua	54.80	38.69	40.78	37.08	37.53	36.80	31.98
INDONESIA	23.40	16.66	16.58	16.35	14.15	13.33	12.49

Sumber: BPS, berbagai sumber (diolah).

Lampiran 3. Persentase dan jumlah penduduk miskin Sulawesi Tenggara menurut daerah kabupaten dan kota, tahun 2009-2010.

KABUPATEN	% Penduduk Miskin			Jumlah Penduduk Miskin (x 1000)		
	2007	2009	2010	2007	2009	2010
Buton	22.94	20.16	17.95	67.7	62.6	45.8
Muna	25.35	20.02	17.35	66.7	54.2	46.5
Konawe	24.63	19.97	17.45	61.1	50.8	42.1
Kolaka	25.35	20.46	18.9	75.6	64.1	59.5
Konsel	18.31	15.17	13.49	47.1	40.4	35.6
Bombana	20.51	16.63	15.7	23.6	20.2	21.9
Wakatobi	24.51	20.42	18.49	26.0	23.0	17.2
Kolaka Utara	26.29	21.88	20.04	26.8	28.4	24.3
Buton Utara	25.09	20.58	18.78	13.2	11.0	10.3
Konawe Utara	18.15	15.19	13.69	7.5	7.7	7.0
Kota Kendari	10.15	7.88	8.02	27.5	22.4	23.2
Kota Bau-Bau	17.08	12.72	12.06	22.6	18.2	16.5
SULTRA	21.33	18.93	17.05	465.4	403.1	350.1

Sumber: BPS, berbagai sumber (diolah).

Lampiran 4. Angka Melek Huruf (AMH) berdasarkan kabupaten/kota, kelompok umur dan jenis kelamin di Sulawesi Tenggara, tahun 2010.

KABUPATEN/KOTA	Total (%)	Menurut Kelompok Umur			
		15 - 29	30 - 44	45 - 60	61 ke atas
Kota Kendari	98	99,9	99,4	94,1	91,4
Kota Bau-Bau	96	99,8	97,5	93,4	71,2
Konawe Utara	93	99,1	95,8	85,7	61,7
Konawe Utara	93	99,7	96,2	85,2	61,9
Kolaka	92	99,5	95,3	83,3	63,7
Konawe Selatan	92	99,4	95,5	80,5	67,5
Kolaka Utara	92	99,7	95,6	75,6	71,3
Bombana	91	99,0	95,1	81,8	56,3
Buton Utara	91	98,9	96,9	83,5	50,0
Wakatobi	89	99,3	96,7	86,0	57,7
Muna	88	99,1	95,9	78,3	50,1
Buton	84	99,0	93,4	70,0	44,4
SULTRA	91	99,4	96,1	82,5	60,6

Sumber: Bank Dunia (2012).

Lampiran 5. APM dan APK pendidikan dasar berdasarkan kabupaten/kota di Sulawesi Tenggara, tahun 2010.

Kabupaten/Kota	APM		APK	
	SD	SMP	SD	SMP
Kota Kendari	95,9	71,7	121,2	92,9
Kota Bau-Bau	96,3	75,3	111,6	93,9
Konawe Utara	94,4	59,5	96,9	92,1
Konawe Utara	92,4	70,8	99,0	92,8
Kolaka	90,4	69,6	97,9	92,8
Konawe Selatan	96,0	77,9	98,1	93,1
Kolaka Utara	94,7	59,1	98,8	92,4
Bombana	91,3	67,5	95,8	92,3
Buton Utara	91,7	67,7	99,2	92,7
Wakatobi	96,2	67,6	101,3	93,5
Muna	91,0	70,8	98,1	92,1
Buton	90,1	75,0	97,4	92,5
SULTRA	93,8	69,4	101,3	92,8

Sumber: Bank Dunia (2012).

Lampiran 6. Ketersediaan dan aksesibilitas fasilitas kesehatan di Sulawesi Tenggara, tahun 2006-2010.

Tahun	Ketersediaan/Keterjangkauan					
	Rasio RS per 100 ribu penduduk	Rasio TT per 10 ribu penduduk	Rasio Puskesmas per 100 ribu penduduk	Rasio Pustu per 100 ribu penduduk	Rasio Puskesmas per seribu Km	Rasio Desa per Pustu
2006	1,0	4,3	8,4	27,1	4,4	4,1
2007	1,1	5,1	8,5	25,2	4,5	3,7
2008	1,3	5,6	10,0	26,7	5,4	3,5
2009	1,3	6,7	10,5	27,8	5,8	3,4
2010	1,6	7,8	10,8	29,0	6,3	3,4

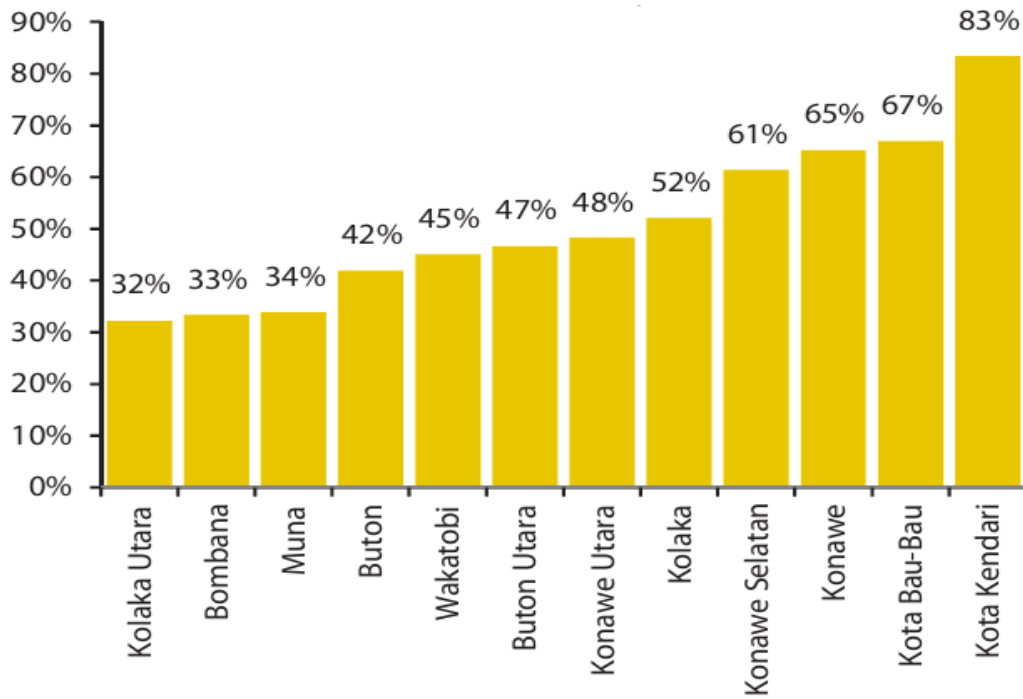
Sumber: Diolah dari *Sulawesi Tenggara dalam Angka*, berbagai tahun, 2013.

Lampiran 7. Belanja pemerintah di Sulawesi Tenggara menurut kategori urusan, tahun 2011.

Urusan	Belanja (Milyar Rp)	Persentase
Pemerintahan umum	5.028,4	41,8
Pendidikan	1.917,7	15,9
Kesehatan	894,2	7,4
Infrastruktur (PU, Perhub, Perumahan)	803,7	6,7
Pertanian	623,2	5,2
Kelautan dan perikanan	90,7	0,8
Lingkungan hidup	68,6	0,6
Kehutanan	76,6	0,6
Sosial	39,8	0,3
Pemuda dan olahraga	35,5	0,3
Pmbrdyn prmpn, KB dan Klrg sejahtera	40,8	0,3
Energi dan SDM	39,6	0,3
Tenaga kerja	34,4	0,3
Koperasi dan UKM	20,3	0,2
Ketahanan pangan	24,9	0,2
Lainnya	2.300,1	19,1
Total	12.038,3	100

Sumber: Database PEA Sulawesi Tenggara, Universitas Haluoleo, 2012.

Lampiran 8. Angka kelahiran yang ditolong tenaga kesehatan menurut kabupaten dan kota di Sulawesi Tenggara, tahun 2010.



Sumber: Diolah dari Susenas 2009 dan 2011.

Lampiran 9: Output pengujian dengan SPSS IBM *forecasting* versi 21,0

1. Model PDRB per kapita (PDRBK)

Model Description

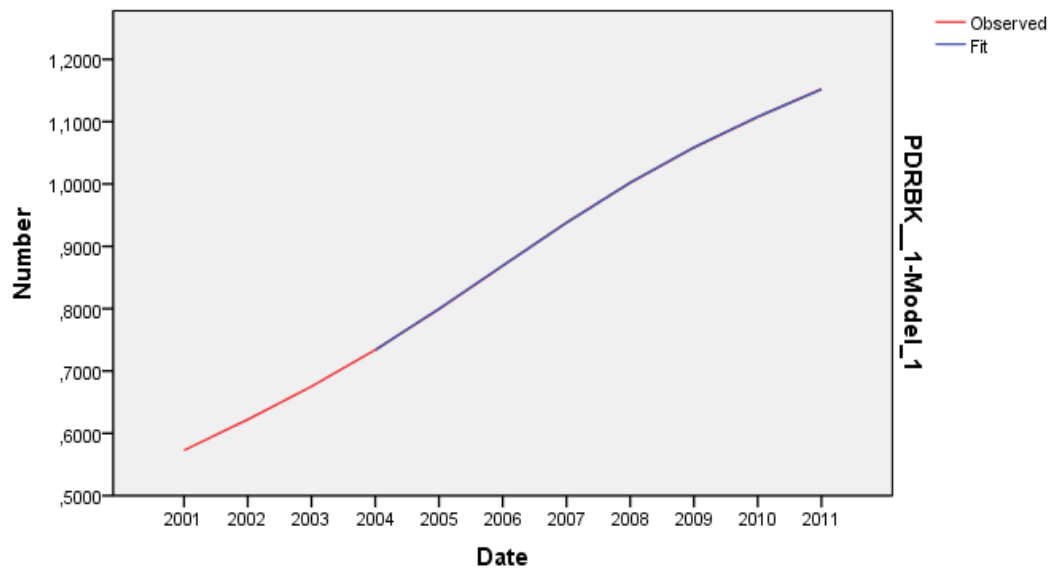
			Model Type
Model ID	T4253H(PDRBK_1_1)	Model_1	ARIMA(0,3,0)

Model Statistics

Model	Number of Predictors	Model Fit statistics	Ljung-Box Q(18)			Number of Outliers
		Stationary R-squared	Statistics	DF	Sig.	
T4253H(PDRBK_1_1)-Model_1	2	,970	.	0	.	0

ARIMA Model Parameters

				Estimate	SE	t	Sig.
	T4253H (PDRBK_1_1)	No Transformation	Constant	-,001	,000	-2,911	,033
			Difference	3			
T4253H (PDRBK_1_1)-Model_1	T4253H (BTF_1_1)	No Transformation	Numerator Lag 0	-,125	,028	-4,428	,007
			Difference	3			
	T4253H (BUP_1_1)	No Transformation	Numerator Lag 0	,330	,027	12,126	,000
			Difference	3			



2. Model Pemerataan Pendapatan (PRP)

Model Description

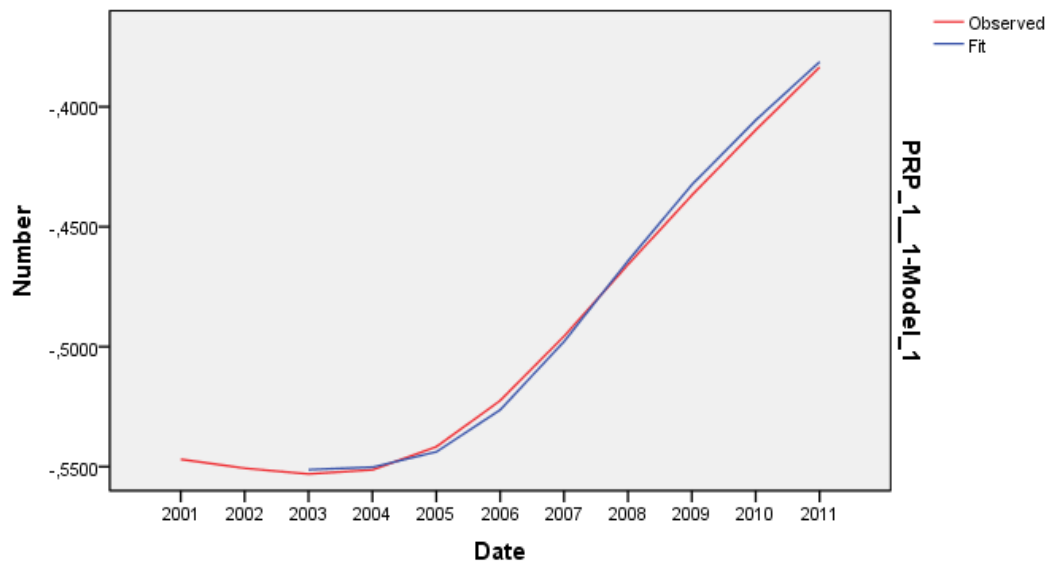
			Model Type
Model ID	T4253H(PRP_1__1)	Model_1	ARIMA(0,2,0)

Model Statistics

Model	Number of Predictors	Model Fit statistics			Ljung-Box Q(18)			Number of Outliers
		Stationary R-squared	R-squared	RMSE	Statistics	DF	Sig.	
T4253H (PRP_1__1)-Model_1	1	,500	,998	,003	.	0	.	0

ARIMA Model Parameters

					Estimate	SE	t	Sig.
T4253H (PRP_1__1)-Model_1	T4253H (PRP_1__1)	No Transformation	Difference		2			
	T4253H (BTF_1__1)	No Transformation	Numerator Lag 0		-,190	,044	-4,352	,002
			Difference		2			



3. Model Indeks Mutu Hidup Fisik (IMHF)

Model Description

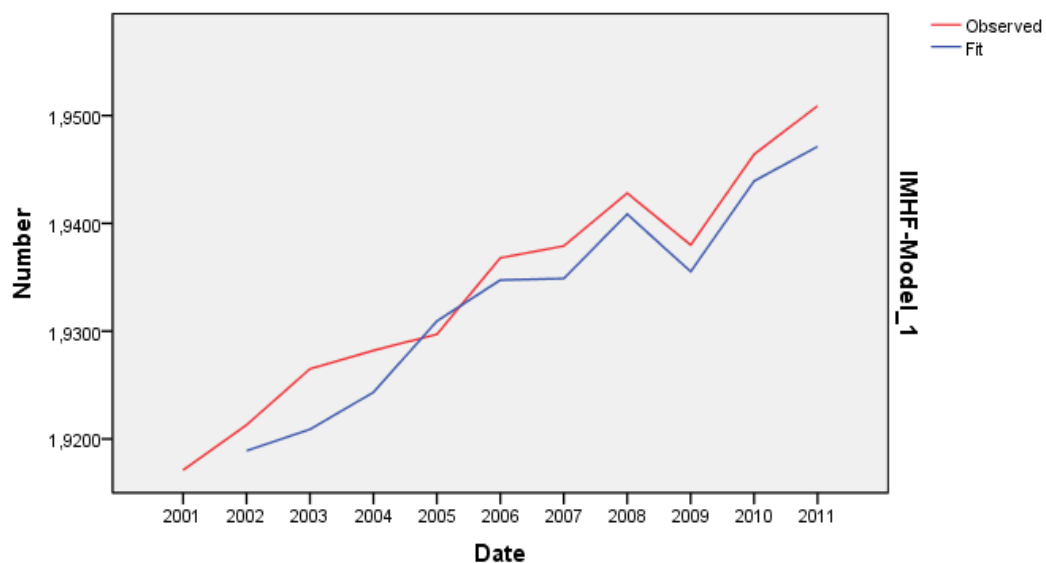
			Model Type
Model ID	IMHF	Model_1	ARIMA(0,1,0)

Model Statistics

Model	Number of Predictors	Model Fit statistics		Ljung-Box Q(18)			Number of Outliers
		Stationary R-squared	R-squared	Statistics	DF	Sig.	
IMHF-Model_1	1	,222	,877	.	0	.	1

ARIMA Model Parameters

				Estimate	SE	t	Sig.
IMHF-Model_1	IMHF	No Transformation	Difference	1			
	BBJ	No Transformation	Numerator Lag 0	,008	,004	2,123	,067
			Difference	1			



4. Model Indeks Pembangunan Manusia (IPM)

Model Description

			Model Type
Model ID	T4253H(IPM_1)	Model_1	ARIMA(0,2,0)

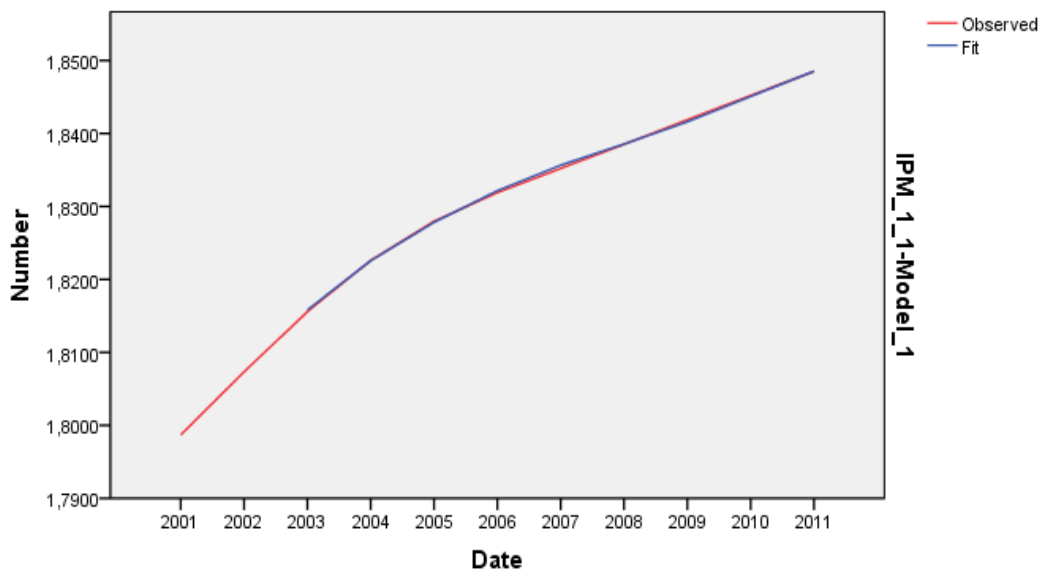
Model Statistics

Model	Number of Predictors	Model Fit statistics			Ljung-Box Q(18)			Number of Outliers
		Stationary R-squared	R-squared	RMSE	Statistics	DF	Sig.	
T4253H (IPM_1)-Model_1	2	,879	1,000	,000	.	0	.	0

ARIMA Model Parameters

				Estimate	SE	t	Sig.

	T4253H (IPM_1)	No Transformation	Difference		2			
T4253H (IPM_1)-Model_1	T4253H (BTF_1)	No Transformation	Numerator Lag 0		,027	,003	7,824	,000
			Difference		2			
T4253H (BBJ_1)	T4253H (BBJ_1)	No Transformation	Numerator Lag 0		-,011	,003	-4,545	,003
			Difference		2			



5. Model Angka Kemiskinan (AKMS)

Model Description

			Model Type
Model ID	AKMS	Model_1	ARIMA(0,1,0)

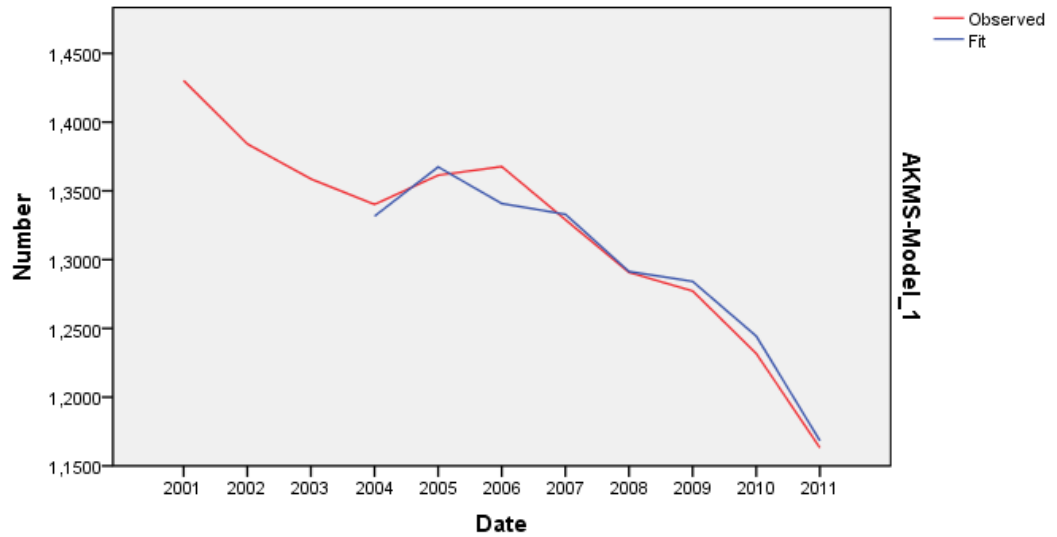
Model Statistics

Model	Number of Predictors	Model Fit statistics		Ljung-Box Q(18)			Number of Outliers
		Stationary R-squared	R-squared	Statistics	DF	Sig.	
AKMS- Model_1	1	,818	,969	.	0	.	0

ARIMA Model Parameters

				Estimate	SE	t	Sig.
AKMS-	AKMS	No Transfor-	Constant	-,053	,007	-7,290	,000

Model_1	mation	Difference		1			
		Delay		2			
BTF	No Transformation	Numerator	Lag 0	,179	,035	5,191	,002
		Difference		1			



6. Model Angka Partisipasi Murni SD (APM)

Model Description

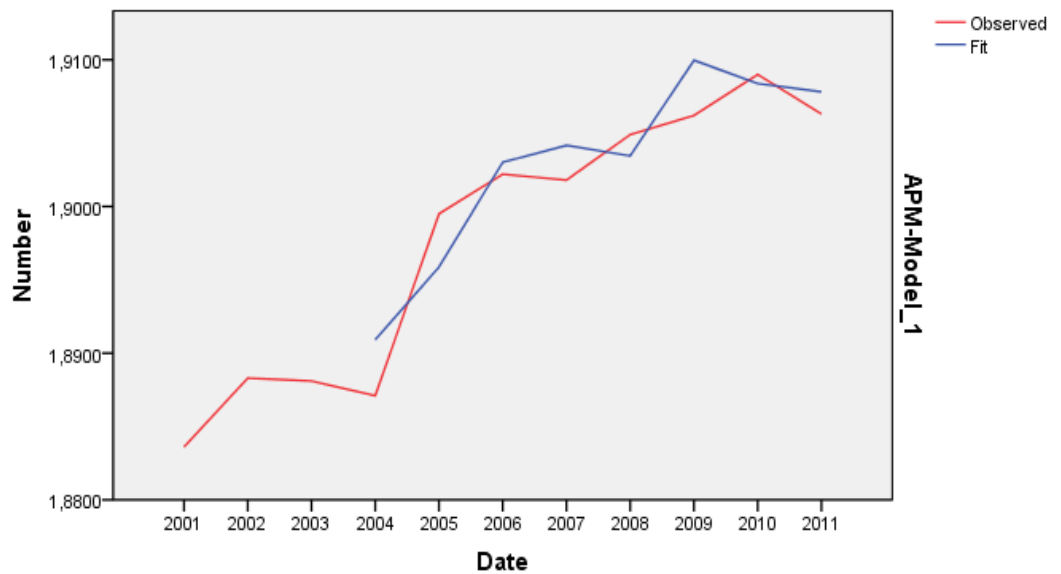
			Model Type
Model ID	APM	Model_1	ARIMA(0,1,0)

Model Statistics

Model	Number of Predictors	Model Fit statistics		Ljung-Box Q(18)			Number of Outliers
		Stationary R-squared	R-squared	Statistics	DF	Sig.	
APM-Model_1	1	,641	,836	.	0	.	0

ARIMA Model Parameters

				Estimate	SE	t	Sig.
APM-Model_1	APM	No Transformation	Difference	1			
			Delay	2			
	BTF	No Transformation	Numerator Lag 0	,020	,005	4,238	,004
			Difference	1			



7. Model Angka Kematian Balita (AKBA)

Model Description

			Model Type
Model ID	T4253H(AKBA_1_1)	Model_1	ARIMA(0,2,0)

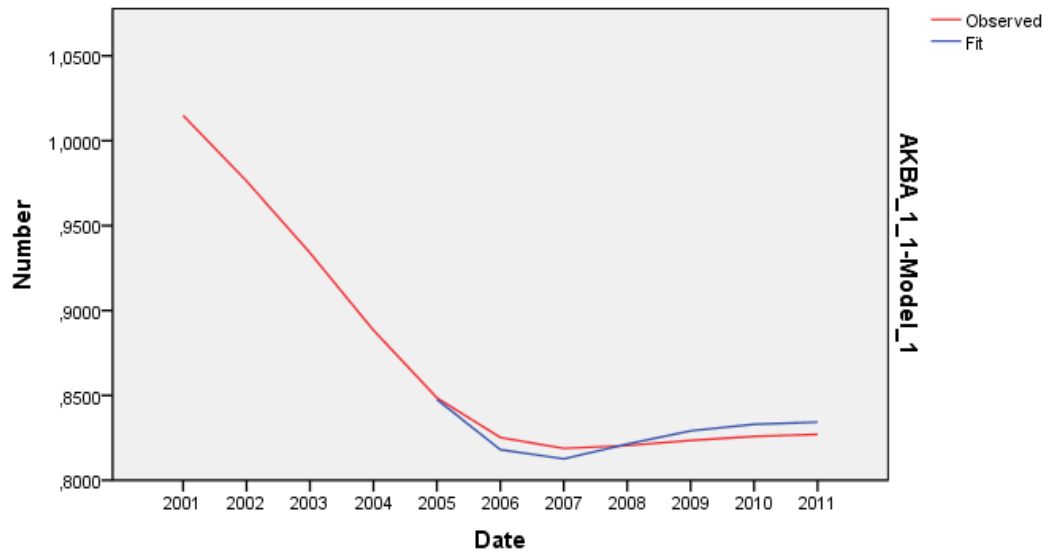
Model Statistics

Model	Number of Predictors	Model Fit statistics			Ljung-Box Q(18)			Number of Outliers
		Stationary R-squared	R-squared	RMSE	Statistics	DF	Sig.	

T4253H (AKBA_1_1)- Model_1	1	,349	,619	,006	.	0	.	0
----------------------------------	---	------	------	------	---	---	---	---

ARIMA Model Parameters

					Estimate	SE	t	Sig.
T4253H (AKBA_1_1)- Model_1	T4253H (AKBA_1_1)	No Transfor- mation	Difference		2			
			Delay		2			
	T4253H (BTF_1_1)	No Transfor- mation	Numerator	Lag 0	-,295	,087	-3,390	,015
			Difference		2			



8. Model Angka Kematian Ibu (AKI)

Model Description

			Model Type
Model ID	AKI	Model_1	ARIMA(0,1,0)

Model Statistics

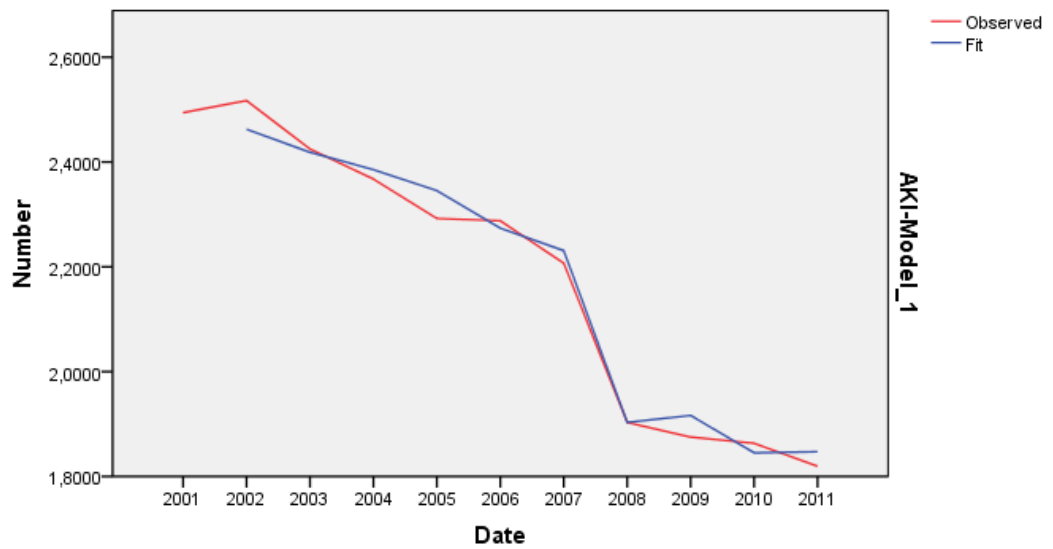
Model	Number of Predictors	Model Fit statistics		Ljung-Box Q(18)			Number of Outliers
		Stationary R-squared	R-squared	Statistics	DF	Sig.	
AKI-Model_1	1	,869	,985	.	0	.	1

ARIMA Model Parameters

				Estimate	SE	t	Sig.
AKI-Model_1	AKI	No Transformation	Difference	1			
	BTF	No Transformation	Numerator Lag 0 Difference	-,222	,058	-3,815	,005
				1			

Outliers

			Estimate	SE	t	Sig.
AKI-Model_1	2008	Level Shift	-,279	,035	-7,875	,000



DAFTAR RIWAYAT HIDUP PENULIS



A. IDENTITAS DIRI

Nama : Syamsul Alam
Tempat & tNggil lahir : Buton, 10 Juni 1962
Jenis kelamin : Laki-laki
Agama : Islam
Alamat rumah : BTN Azatata Citra, Blok J Nomor 10, Telp..
Kendari, Sulawesi Tenggara, Indonesia.
Pekerjaan : Pegawai Negeri Sipil
NIP : 19620610 198803 1 002
Pangkat terakhir : Pembina Utama Muda, Golongan IV/c,
Tmt. 1 April 2009
Instansi/Unit kerja : Universitas Haluoleo;
Fakultas Ilmu Sosial dan Ilmu Politik
Alamat kantor : Kampus Bumi Tridharma Anduonohu
Kendari.
Email : syamsulalam67@gmail.com

B. KELUARGA

Ayah : La Badari (Almarhum)
Ibu : Hj. Wa Ode Din Surya
Isteri : --
Anak : (1) R. Prihartawan, S.Hut., (L); 04 Maret 1984.
(2) Dewi K. Cayarani (P); 31 Agustus 1988.
(3) Riaz Hassan (L); 11 Februari 1992.
(4) Layli Juwairiyah (P); 12 Februari 1998.
Menantu : Susianti Sultan (P)
Cucu : Alif Itsar Prihartawan (L)

C. RIWAYAT PENDIDIKAN

- 1) SD Negeri 2 Langge, Kaledupa, Wakatobi, tamat tahun 1973;
- 2) SMP Negeri 1 Kaledupa, Wakatobi, tamat tahun 1976;

- 3) SMA Negeri 1 Bau-Bau, tamat tahun 1980;
- 4) Sarjana Ilmu Administrasi, Fisip Universitas Haluoleo, Kendari, 1986.
- 5) Magister dalam Bidang Ilmu Sosial, Fisipol Universitas Gadjah Mada, Yogyakarta, 1993.
- 6) Program Doktor Ilmu Administrasi Publik Universitas Hasanuddin, Makassar, Angkatan Tahun 2010.

D. RIWAYAT JABATAN

- 1) Jabatan pokok:
 - Dosen pada Fisip Unhalu sejak tahun 1988, dengan jabatan akademik terakhir Lektor Kepala.
- 2) Jabatan Tambahan:
 - Sekretaris Program Ekstensi Fisip Unhalu, Tahun 1997-1998.
 - Ketua Program Studi Administrasi Negara Fisip Unhalu, 1998-2001.
 - Sekretaris Jurusan Ilmu Administrasi Fisip Unhalu, 2001-2003.
 - Pembantu Dekan I (Bidang Akademik) Fisip Unhalu, 2002-2005.

E. KURSUS/ PELATIHAN

- 1) *A Practical Approach to College and University Teaching: Methodology of Teaching and Learning at Tertiary Level*, Kendari: 9 Juli s/d 27 Juli 1990.
- 2) Pengembangan Infrastruktur Jaringan dan Sistem Informasi Online Menuju Electronic Campus (*E-Campus*), Bogor, IPB: 15 Juli s/d 26 Juli 2002.

F. KARYA ILMIAH PENELITIAN

- 1) Analisis Kebutuhan Dasar Daerah Kota Kendari, Tahun 2002.
- 2) Analisis Penggunaan Kendaraan Dinas Pemerintah Provinsi Sulawesi Tenggara, Tahun 2004.
- 3) Penilaian Kapasitas Institusi dan Pelaku untuk Mendukung Reformasi Tata Pemerintahan yang Terdesentralisasi di Provinsi Sulawesi Tenggara, Tahun 2005.
- 4) Pengembangan Ekonomi Lokal, Pendidikan, dan Kesehatan di Kecamatan Abeli Kota Kendari, Tahun 2006.
- 5) Penyusunan Perencanaan Pengembangan Ekonomi Lokal, Pendidikan, dan Kesehatan di Kecamatan Baruga Kendari, Tahun 2007.
- 6) Studi Efisiensi dan Efektivitas Penganggaran Kota Kendari, Tahun 2007.
- 7) Restrukturisasi Organisasi Perangkat Daerah

Kota Kendari, Tahun 2008.

- 8) Studi Persiapan Penyusunan Model Layanan Publik Dalam Penanggulangan Kemiskinan, Kesehatan Dan Pendidikan Di Kota Kendari, Tahun 2012.
- 9) Studi Replikasi Model Layanan Publik Dalam Penanggulangan Kemiskinan, Kesehatan Dan Pendidikan Di Kota Kendari, Tahun 2013.
- 10) Studi Pengembangan Kelembagaan Pemerintahan Desa untuk Pemberdayaan Masyarakat di Provinsi Sulawesi Tenggara, Tahun 2013.

**G. PEMAHALAH
SEMINAR/
LOKAKARYA/DIAL
OG PUBLIK**

- 1) Seminar “Proses Penganggaran Berdimensi Kerakyatan”, FITRA, Palembang, 28 Oktober 2000.
- 2) Seminar “Pelibatan Rakyat dalam Proses Penganggaran”, FITRA, Jakarta, 25 Oktober 2001.
- 3) Dialog Publik “Ada Apa dengan Anggaran”, Kendari, 25 April 2002.
- 4) Dialog Publik “Birokrasi Bobrok: Refleksi Kritis Terhadap Penganggaran Pemerintah Daerah”, Kendari 31 Desember 2002.
- 5) Diskusi Panel “Resolusi Konflik di Daerah”, Jakarta, 14 Desember 2004.
- 6) Lokakarya “Tata Pemerintahan yang Baik dan Terdesentralisasi di Tingkat Kabupaten”, Buton, 15 Maret 2006.
- 7) Seminar “Identifikasi dan Penilaian Sumber dan Potensi Bencana Sosial di Sulawesi Tenggara”, Kendari, 15 Desember 2007.
- 8) Pembinaan Organisasi Pedagang Kaki Lima dan Asongan Kota Makassar, 14 Oktober 2012.
- 9) Workshop Penyusunan Draft Rencana Aksi Daerah Penanggulangan Kemiskinan, Pendidikan dan Kesehatan Kota Kendari, Desember 2012.

**H. PENGALAMAN
TIM KERJA**

- 1) Kelompok Kerja Dosen Program Magister (S2) Administrasi Pembangunan Kelas Nonreguler Kendari, Tahun 2002.
- 2) Tim Kerja Percepatan dan Pemerataan

- Pembangunan Menuju Sultra Raya 2020,
Tahun 2003.
- 3) Tim Seleksi Calon Peserta Diklatpim Tingkat II Pejabat Struktural Lingkup Pemerintah Daerah se Provinsi Sulawesi Tenggara, Tahun 2004.
 - 4) Tim Penyusun Draft Perda Kabupaten Buton tentang Pengelolaan Wilayah Pesisir dan Laut, Program MCRMP Kabupaten Buton, Tahun 2004.
 - 5) Konsultan Tim Teknis Kabupaten Peningkatan Mutu SMP pada Dinas Pendidikan dan Kebudayaan Provinsi Sulawesi Tenggara, Tahun 2005.
 - 6) Tim Koordinasi dan Pembinaan Perencanaan Strategi Daerah Pembangunan Daerah Tertinggal (STRADA PDT) Provinsi Sulawesi Tenggara, Tahun 2006.
 - 7) Tim Seleksi Calon Anggota Komisi Pemilihan Umum (KPU) Daerah Kabupaten Wakatobi, Tahun 2008.
 - 8) Tim Pendamping Penyusunan Renstrada Provinsi Sulawesi Tenggara Tahun 2008.
 - 9) Tim Penyusunan Draft Rencana Aksi Daerah Penanggulangan Kemiskinan, Pendidikan dan Kesehatan Kota Kendari, Tahun 2012.

Makassar, 2 Juli 2013.

Yang Membuat,

Syamsul Alam