

DAFTAR PUSTAKA

- Anonim.2006.*Fagositosis*.<http://pkukmweb.ukm.my/~daniel/Fagositosis.html>. Diakses 7 November 2008.
- Abdoel, T.H, Pastoor, R, Smits, H.L. and Hatta, M, 2007. Laboratory Evaluation of a Simple and Rapid Latex Agglutination Assay for The Serodiagnosis of Typhoid Fever. *Transcription of The Royal Society of Tropical Medicine and Hygiene*, vol.101, 1032 – 1038
- Aspx. 2006. *Typhoid Fever*. (Online). http://nhs.direct.nhs.uk/articles/article.aspx?articled:380&Sectionid.12570_14k. diakses 20 Oktober 2008).
- Baratawidjaja, K.G. 2000. *Imunologi Dasar Edisi IV*. Fakultas Kedokteran Universitas Indonesia, Jakarta.
- Blackwell, J. M., Barton, C.H., White, J.K., Searle, S., Baker A.M., Williams, H., Shaw, M.A. 1995. *Genomic organization and Sequence of the Human NRAMP Gene: Identification and Mapping of a promoter Region Polymorphism*. *Molec. Med.* 1: 194-205.
- _____, 1996. *Structure and function of the natural-resistance-associated macrophage protein (Nramp1), a candidate protein for infectious and autoimmune disease susceptibility*. *Mol.Med. Today*. 2:205–11.
- Bellamy, R., Ruwende, C., Corrah, T., McAdam, K. P. W. J., Whittle, H.C., Hill, A.V.S. 1998. *Variations in the NRAMP1 gene and susceptibility to tuberculosis in West Africans*. *New Eng. J. Med.* 338: 640-644.
- Campbell, N.A., Reece. J.B., Mitchell, L.G. 2002. *Biologi Jilid 1 Edisi Kelima* Erlangga, Jakarta.
- Hergaux C. F., Calafat, J., Richer, E., Cellier, M., Grinstein, S., Borregaard, N., Gros, P. 2002. *Expression and Subcellular Localization of NRAMP 1 in Human neutrophil Granules*. *Blood* 100: 268-275.
- Cellier, M., Govoni, G., Vidal, S., Kwan, T., Groulx, N., Liu, J., Sanchez, F., Skamene, E., Schurr, E., Gros, P. 1994. *Human natural resistance-associated macrophage prote in: cDNA cloning, chromosomal mapping, genomic organization, and tissue-specific expression*. *J. Exp. Med.* 180: 1741-1752.

- Darmowandowo W. Demam Tifoid. Dalam : Soedarmo SS, Garna H, Hadinegoro SR,Eds. 2002. *Buku Ajar Ilmu Kesehatan Anak : Infeksi & Penyakit Tropis*, edisi 1. Jakarta : BP.FKUI.
- DeWitt, Rosalyn C. 2002. *Typhoid Fever*. (Online). (http://healthatoz.com/healthatoz/atoz/typhoid_fever.jsp, diakses 11 Agustus 2008).
- Djauzi, S. 2005. *Mencegah Demam Tifoid*. (Online). (<http://www.kompas.com/kesehatan/news/0503/27/090454.htm>, diakses 11 Agustus 2008)
- Dustan, S.J., et.al. 2001. *Typhoid Fever and Genetic Polymorphisms at the Natural Resistance-Associated Macrophage Protein 1*. Vol.183., No. 1156-60.
- Efendi, Z. 2003. *Daya Fagositosis Makrofag Pada jaringan Longgar tubuh. Bagian Histologi Fakultas Kedokteran Universitas Sumatera Utara*.
- Everest, P., Wain, J., Roberts, M., et.al. 2001. *The Molecular Mechanisms of Severe Typhoid Fever*. Trends in Microbiology. Vol.9 No.7.
- Fatchiyah, Arumingtyas, E.L. 2006. *Kromoson, Gen, DNA, Sintesis Protein dan Regulasi* Laboratorium Biologi Molekular dan Selular Universitas Brawijaya, Malang.
- Fauza, V., Hatta, M. 2003. *Metode Ekstraksi DNA*. Bagian Patologi Klinik & Mikrobiologi FK Unhas Perjan RS dr. Wahidin Sudirohusodo .Makassar.
- Ferri, F. 2004. *Clinical Advisor Instant Diagnosis and Treatment*, Mosby, USA: 885.
- Fitness, J. Floyd, S. Warndorff, D.K., et al. 2004. *Large Scale Candidate Gene Study of Leprosy Susceptibility In The Karongo District Of Northern Malawi*. Am J Trop Med Hyg. Vol.71:330-340.
- Garrity,G. 2000. *Bergey's Manual Of Systematic Bacteriology 2nd Edition*. (Online). (http://www.cme.msu/Bergey's_outline.trn.pdf).
- Gupte, S. 1990. *Mikrobiologi Dasar*. Alih bahasa Julius ES. Binarupa Aksara. Edisi III. Jakarta.
- Halwey, L. 2003. *Intisari Mikrobiologi dan Penyakit Infeksi*. Hipokrates. Jakarta.

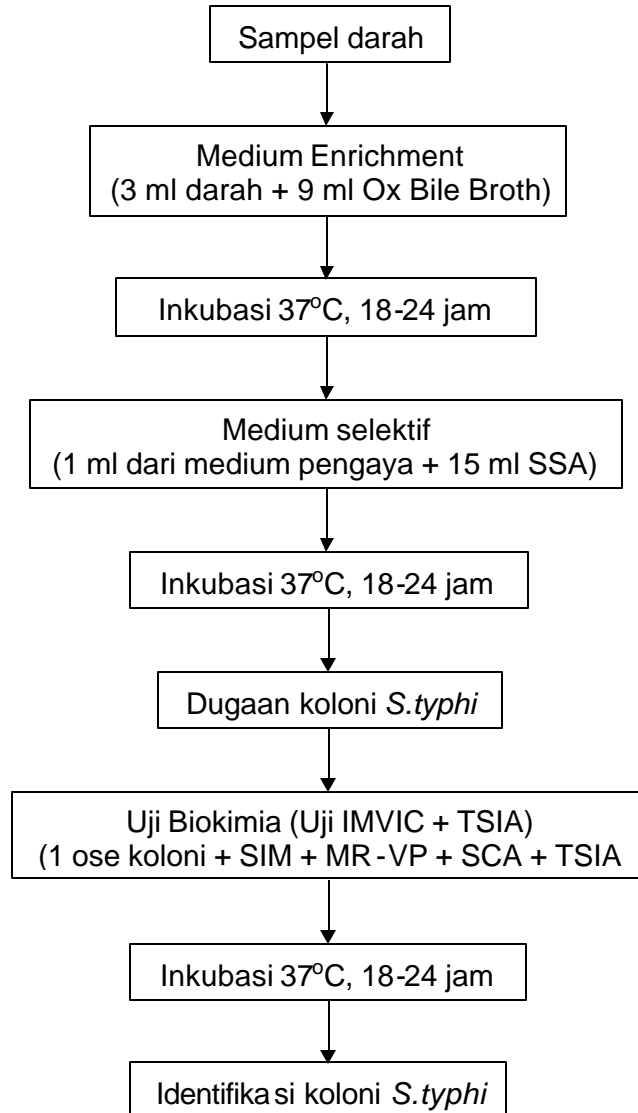
- Hartini, R. 2000. *Perbandingan 3 cara biakan S. typhosa, S. paratyphosa A, dan S. paratyphosa B sebagai penunjang diagnosis demam tifoid*. NEXUS vol. 13 no.1; 117-121.
- Hatta, M. 2002. *Teknik Isolasi dan Pengukuran DNA*. Makalah. Dibawakan pada Seminar Teknik Isolasi DNA. Universitas Hasanuddin. Makassar.
- Hatta, M., Goris, M. G. A., Heerkens, E., Gooskens, J., Smits, H.L. 2002. *Simple dipstick assay for the detection of S. typhi specific IgM antibodies and the evolution of the immune response in patient with typhoid fever*. The American Journal of Tropical Medicine and Hygiene. Vol. 66, No.4 : 416-421.
- Hatta, M., Mubin, H., Abdoel, T., Smits., Henk, L. 2002. *Antibody response in typhoid fever in endemik Indonesia and the relevance of serology and culture to diagnosis*. Southeast Asian Journal Tropical Medicine and Public Health. Vol.33: 182-191.
- Hatta, M., Smits, H.L. 2007. *Detection Of Salmonella typhi By Nested PCR In Blood, Stool, Urine Samples From Typhoid Patients*. The American Journal Tropical Medicine and Hygiene. Vol. 76, No.1 : 139-143
- Jawetz, Melnick, J.P. and Adelberg's. 2005. *Mikrobiologi Kedokteran*. Edisi 20. Salemba Medika, Jakarta.
- Jenefer, M., Blackwell, Searle, S., Goswami, T., Miller, N., 2000. *Understanding the multiple functions of Nramp1*. Microbes and Infection. Vol.2. Issue 3. Pages 317-32.
- Karim, A. 2005. *Analysis of Culture, Resistance and Polymerase Chain Reaction Test Of Salmonella typhi On Children Suspected To Typhoid Fever In DR. Wahidin Sudirohusodo Hospital In Makassar*. Thesis Hasanuddin University, Makassar.
- Kishi, F. 1994. *Isolation and characterization of human NRAMP cDNA*. Biochem. Biophys. Res. Commun. 204: 1074-1080, 1994
- Kresno, B.S. 2001. *Immunologi : Diagnosis Dan Prosedur Laboratorium*, Edisi IV. FK-UI. Jakarta.
- Kwenang, O. A. 2007. *Serologic and Molecular Analysis On Thypoid Endemic Population To Determine The Endemic Level In Jeneponto, South Sulawesi* Disertasi of Hasanuddin University, Makassar.

- Lakare, C. 2001. *Catatan Kuliah Mikrobiologi Kedokteran II (Bagian Khusus)*. Bagian Mikrobiologi FK-UNHAS, Makassar.
- Lierena, S.E., Maciel, C.D. 2001. *Exploratory visualization of RFLP-PCR genomic data using Multidimensional Scaling*. Brazil. E-mail kepada Sespezua (sespezua@sel.eesc.usp.br, maciel@sel.eesc.usp.br)
- Liu, J., Fujiwara, T. M., Buu, N. T., Sanchez, F. O., Cellier, M. et.al. 1995. *Identification of polymorphisms and sequence variants in the human homologue of the mouse natural resistance-associated macrophage protein gene*. Am. J. Hum. Genet. 56: 845-853.
- Lubis, B. 1990. *Demam Tifoid Makna Pemeriksaan Laboratorium dan Pencegahan*. Medika. 5 : 366 – 373.
- Malo, D., Vogan, K., Vidal, S., Hu, J., Cellier, M., Schurr, E., Fuks, A., Morgan, K., Gros, P. 1994. *Haplotype mapping and sequence analysis of the mouse Nramp gene predict susceptibility to infection with intracellular parasites*. Genomics. 23: 51-61.
- Muladno. 2002. *Seputar Teknologi Rekayasa Genetika*. Pustaka Wirausaha Muda, Bogor.
- Mulyawan, S.Y., Surjawidjaja, J.E. 1999. *Diagnosis Dini Demam Tifoid Dengan Menggunakan Protein Membran Luar S. typhi Sebagai Antigen Spesifik*. Cermin Dunia Kedokteran No. 124; 121-126
- Nasir, M. 2002. *Bioteknologi Potensi Dan Keberhasilannya Dalam Bidang Pertanian*. PT. Raja Grafindo Persada, Jakarta.
- Noer, Sjaifoellah. 1996. *Buku Ajar Ilmu Penyakit Dalam Jilid I Edisi Ketiga*. FK-UI. Jakarta.
- Pelczar, M.J. dan Chan, E.C.S. 1998. *Dasar-dasar Mikrobiologi 1 & 2*. UI-Press, Jakarta .
- Pollack, D.V., 2003. *Salmonella enterica typhi* (Online) [http://web.uconn.edu/mcbstaff/graf/student%20presentations/salmonella typhi.html](http://web.uconn.edu/mcbstaff/graf/student%20presentations/salmonella%20typhi.html). Diakses tanggal 18 November 2008
- Punjabi, N.H. 2004. *Beban Penyakit Demam Tifoid Serta Salmonellosis Lainnya Berdasarkan Hasil Surveilans Pasif Di Dua Kecamatan Jakarta Utara Indonesia*. Regional Center For Community Nutrition University Indonesia, Jakarta

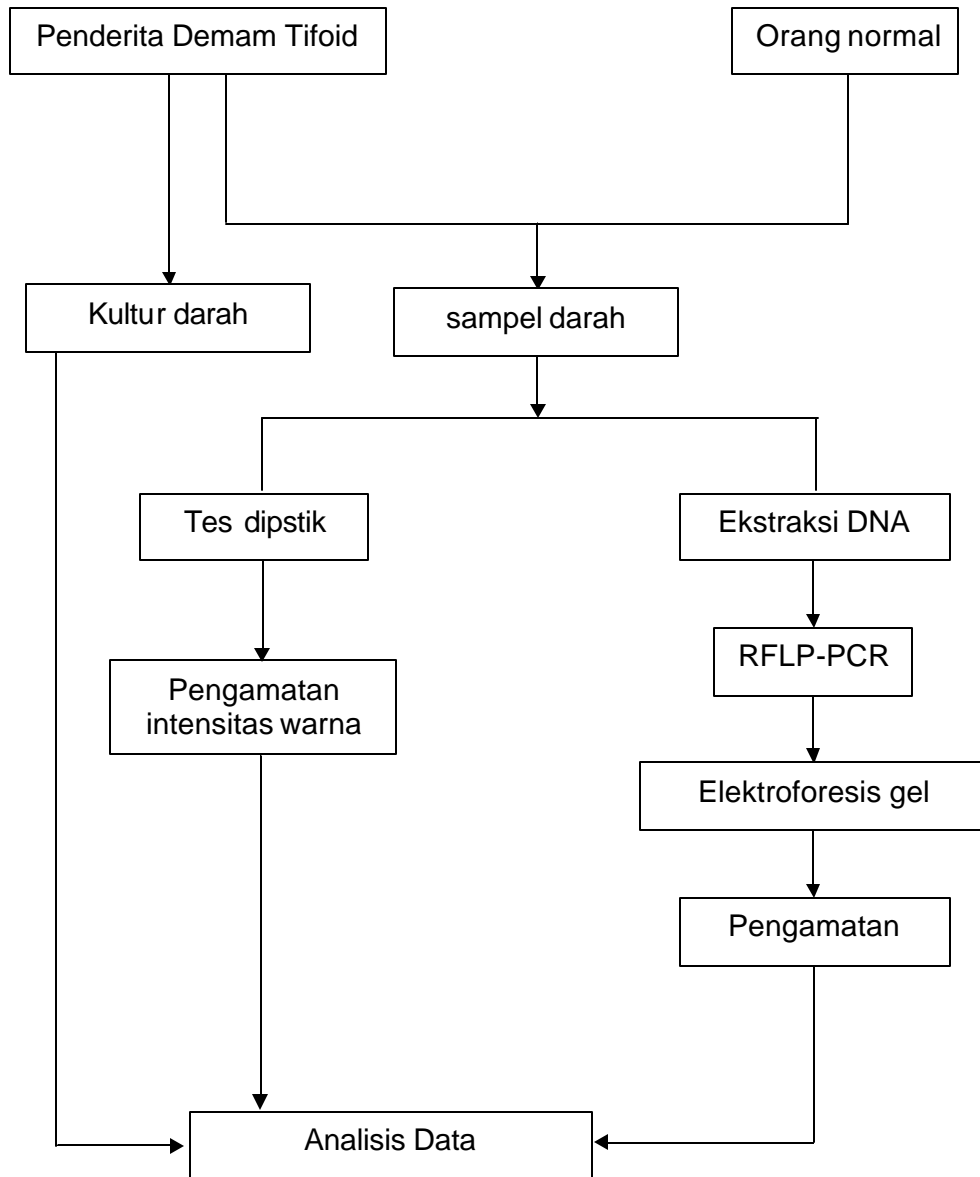
- Rasmilah, 2001. *Thypus*. Fakultas Kesehatan Masyarakat Universitas Sumatera Utara.
- Rewa, S. N. 2000. *Sistim Immunologi Histologi*, Fakultas Kedokteran Universitas Hasanuddin, Makassar
- Snowden, K and Hommel, M. 1995. *Antigen detection immunoassay using dipstik and colloidal dyes*. Journal of Immunological Methods. Lsevier Sciebce Publishers.
- Santoso, Sanarto. 2003. *Protein Adhesin Salmonella typhi Sebagai Faktor Virulensi Berpotensi Immunogenik Pada Produksi S-Iga Protektif*. Universitas Airlangga, Surabaya.
- Syahrurachman, dkk., 1994. *Buku Ajar Mikrobiologi Kedokteran edisi Revisi*. Binarupa Aksara. Jakarta.
- Suryo. 1998. *Genetika*. Cetakan Kedelapan. Gadjah Mada University Press, Yogyakarta.
- Steen, S.W. 1999. *Handbook for DNA Isolation, RAPD-PCR, and PCR-RFLP Botanical garden and Museum*. University of Oslo.
- Toha, A. H. 2001. *Deoksi Nukleac Acid Ekspresi, Rekayasa, Keanekaragaman, Efek Pemanfaatannya*. Alfabeta, Bandung.
- Tumbelaka, A.R., Retnosari, S. 2001. *Imunodiagnosis Demam Tifoid*. Dalam : Kumpulan Naskah Pendidikan Kedokteran Berkelanjutan Ilmu Kesehatan Anak XLIV. BP FKUI. Jakarta.
- WHO. 2003. *The Diagnosis, Treatment And Prevention Of Typhoid Fever*. (Online). (http://www.searo.who.int/LinkFiles/Publications_HLM_382_Rev1.pdf, diakses 29 November 2007).
- Wikipedia. 2007. *Isolasi DNA*. (Online). [http://en.wikipedia.org/wiki/Isolasi DNA](http://en.wikipedia.org/wiki/Isolasi_DNA). diakses 22 September 2008)
- Wikipedia. 2006. *Polymerase Chain Reaction*. (Online). [http://en.wikipedia.org/wiki/Polymerase Chain Reaction](http://en.wikipedia.org/wiki/Polymerase_Chain_Reaction). Diakses tanggal 18 November 2008.
- Wikipedia, 2006. *Elektroforesis Gel* (Online). (http://en.wikipedia.org/wiki/Biologi_molekuler. Diakses pada tanggal 22 September 2008)

- Windarti dan Hardjoeno. 1998. *Sensifitas Hasil Pemeriksaan Gall Kultur Pada Penderita Demam Tifoid di RSUP Dr. Wahidin Sudirohusodo*. Bagian Patologi Klinik Fakultas Kedokteran. Universitas Hasanuddin, Kumpulan Makalah Pertemuan Ilmiah Berkala (PIB) X;341-344.
- Xiao, J., Xin, X., Wan, X., et.al. 2006. *Modified simple RFLP-PCR Method For Single Nucleotide Polymorphism (SNP) Typing*. Genetics and Molecular Biology. Vol.29, No.3 : 562 - 565. (Online). (www.scielo.br/scielo.php?script=sci-arttext. Diakses 4 November 2008).
- Yen, J.H. Lin, C.H. Tsai, W.C. et al. 2006. *Natural Resistance Associated Macrophage Protein 1 Gene Polymorphisms In Rheumatoid Arthritis*. Immunol Lett. Vol.102:91-97.
- Yuwono, T., 2006. *Teori dan Aplikasi Polymerase Chain Reaction, Panduan Eksperimen PCR untuk Memecahkan Masalah Biologi Terkini*, Penerbit Andi, Yogyakarta.

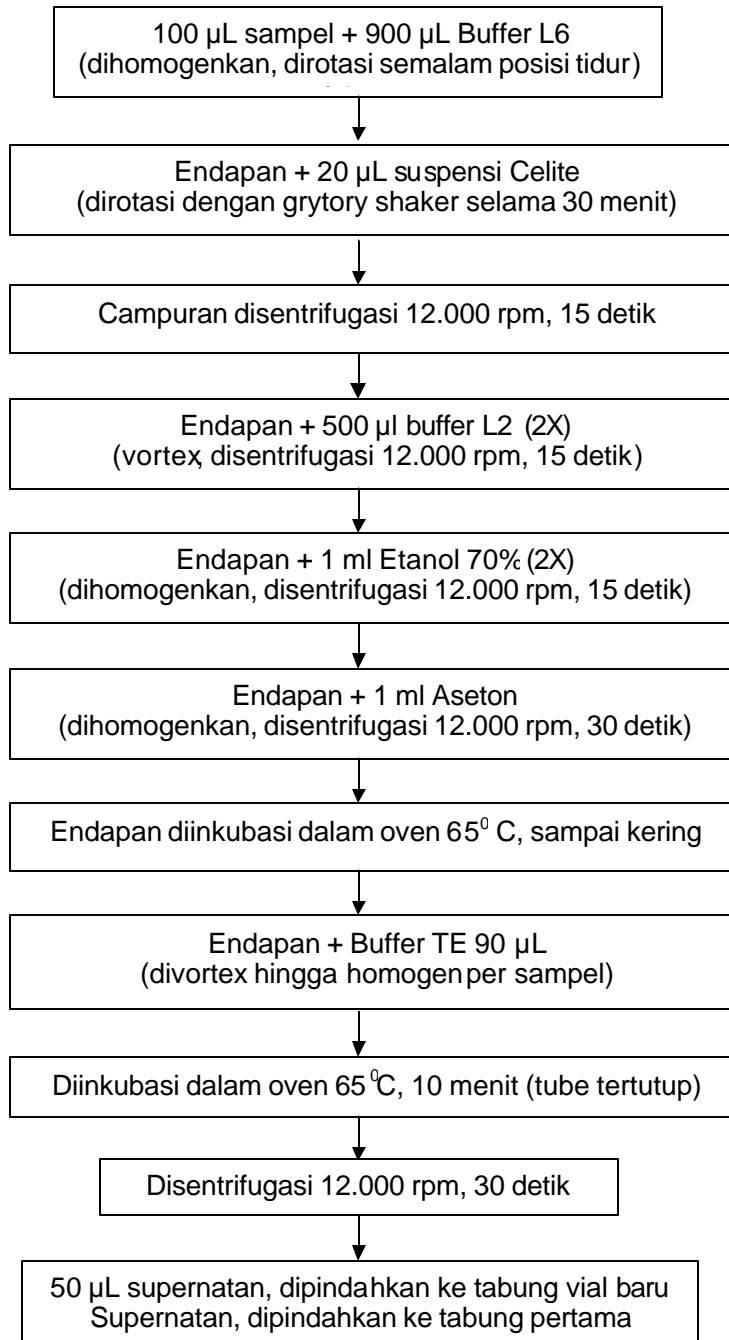
Lampiran 1 . Skema Kerja Kultur Darah



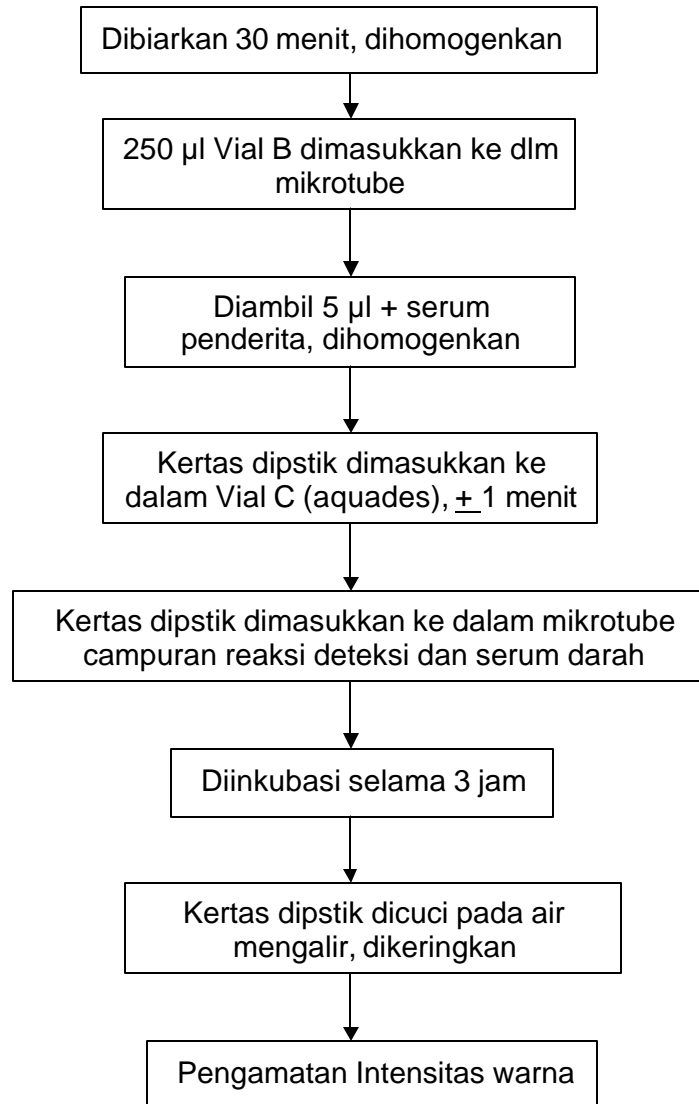
Lampiran 2. Alur Kerja Penelitian



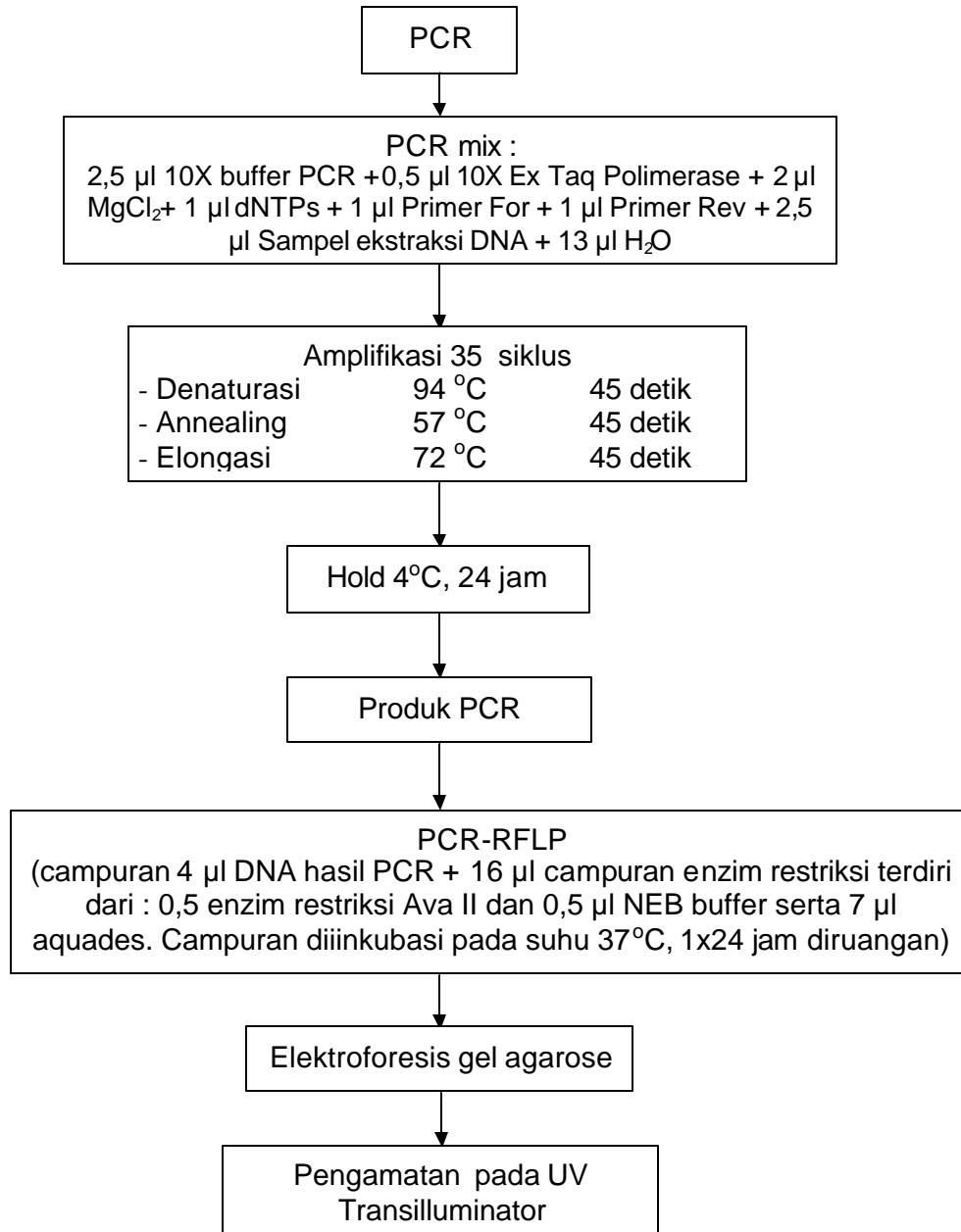
Lampiran 3. Skema Kerja Ekstraksi DNA



Lampiran 4. Skema Kerja Tes Dipstik



Lampiran 5. Skema Kerja RFLP-PCR



Lampiran 6. Sequence Nukleotida Gen NRAMP-1, Posisi Primer dan Letak Pemotongan oleh Enzim Restriksi

(Sumber. Marquet,S., Lepage,P., Hudson,T., Musser,J.M. and Schurr,E., 2000. from NCBI)

ORIGIN

17701 attattccat tttacagatg ggaaaactga tgcactcagt taagtacta gtggcagggc
17761 ttggattcaa accgaagcaa cctggtgcca gagccccaa acactttctc ctgctttgga
17821 gcccaaac tgataaggca ggagacgggg aagtaggctc agtgtggta gggcagttga
17881 gctcacacc acacagaggg tgtcaagcca cgcccatctt gccccacc ttgccatatt
17941 ctgaggcaga attcctcagc ctaggctcct gctgctctcc ccagctccg ttcgccgtgc
18001 tgccatcct cacgttacc agcatgcca ccctcatgca ggagtttgcc aatggcctgt
18061 gagtaccccc tttccaagt gctggattgc atcaccacat ttcatcctca cagccacca
18121 gaggtacgag ctacaattct cccattatc ccaatgaagc cacagaggct gagagaggtt
18181 aagggactta cccaggtta cacagctagc aagttgagga gccaaactg gaatccaggg
18241 aagagggtg tttctagagc ctgagcgct cactctcgc tcagactcag ctcttgccaa
18301 atcccgcag tgtgtagcct ggagggccca ggaggcagga ggtggggagg gggctctgct
18361 gctccaggtc ccacagacca gagaagcggc ctcaagtgtat cccacccc agtgtggggc
18421 ctgggagatg aagaggagt gatgcagggt ggccagcagc aaccagccag tctgagcct
18481 ctctcgtgtc cccaggtg aacaaggtcg tcacctctc catcatggtg ctagtctgag
18541 ccatcaacct ctactctgtg gtcagctatc tgcccagcct gccccacct gcctacttcg
18601 gccttgagc cttgtggcc gcagcctacc tgggcctcag cacctacctg gtacagtagg
18661 gccaggggat gccttgggaa tggatgaggg aaggacaaga ggcaaccaat ggggagggtt

Primer F (D543N)

18721 tggggggaca caatgggct tcccagagg tcttg**gcac** **tccc****caattc** **atggtt****gccc**
18781 c**tcccc****agg** **tctgg****actg** **ttgctt****gcc** **cacgg****agcca** **ctttct****ggc** **ccacag****ctcc**
18841 c**accacc****act** **tctgtat****gg** **gctcctt****gaa** **gagg****accaga** **aagggg****agac** **ctctg****ctag**

Daerah Pemotongan Ava II

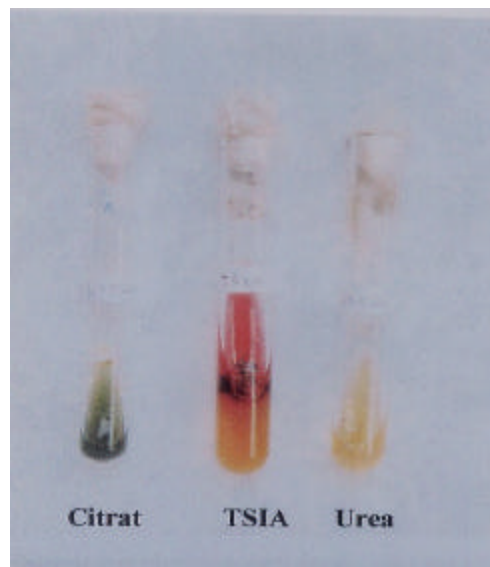
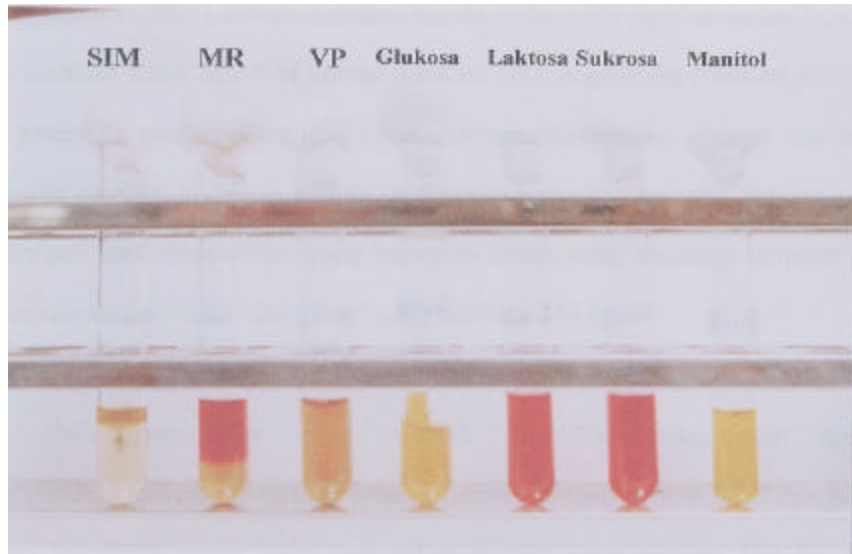
18901 gccaca **cca** **ggcctg****ct** **gggag****tggca** **tgtat****gact** **gact****ggcctg** **ct** **ggat****gtgg**
18961 agggg**cgcg** **tcag****gcag** **aggat****agagt** **ggg****acagttc** **ctgag****accag** **ccaact****ggg**
Primer R (D543N) 5' - aactgtcccactctatcctg

19021 ggctttaggg acctgctgt tctagegca gccatgtgat taccctctgg gtctcagtgt
19081 cctcatctgt aaaatggaga caccaccacc cttgccatgg aggttaagca cttaacaca
19141 gtgtctggca cttgggacaa aaacaaaca acgaaaaaca tttcaaaagg tatttattga
19201 gcacctgcag gcgtgacctg acagcccaag ggtgggtggg gtgagggctt gaggacttgg
19261 gcgggacaca ggctccaaac tggagcttga aatagtgct gatgaatgt aaattatcta
19321 tctatctatt tatttattta tttgagacag ggaaagggtc tcctctgtt gccaggctg
19381 gagtgcagtg gcgcaatctt aactcattgc aacctccacc ttctgggttc aagcgattct
19441 ctttattcag cccgggagt ggcgcgcgc accacgcca gctaatttgt gtattttcag
19501 cagagacggg gtttgccatg ctggccaggc tggctcgaa ctgctggatt caagtgatcc
19561 gccatctcc gtctcccaa gtctgggaa ttacaggcgt gagccacca acccgctg
19621 attaaagta aataaact agttccctc tcgtccaaag gagcagggaa tgggaaccgg

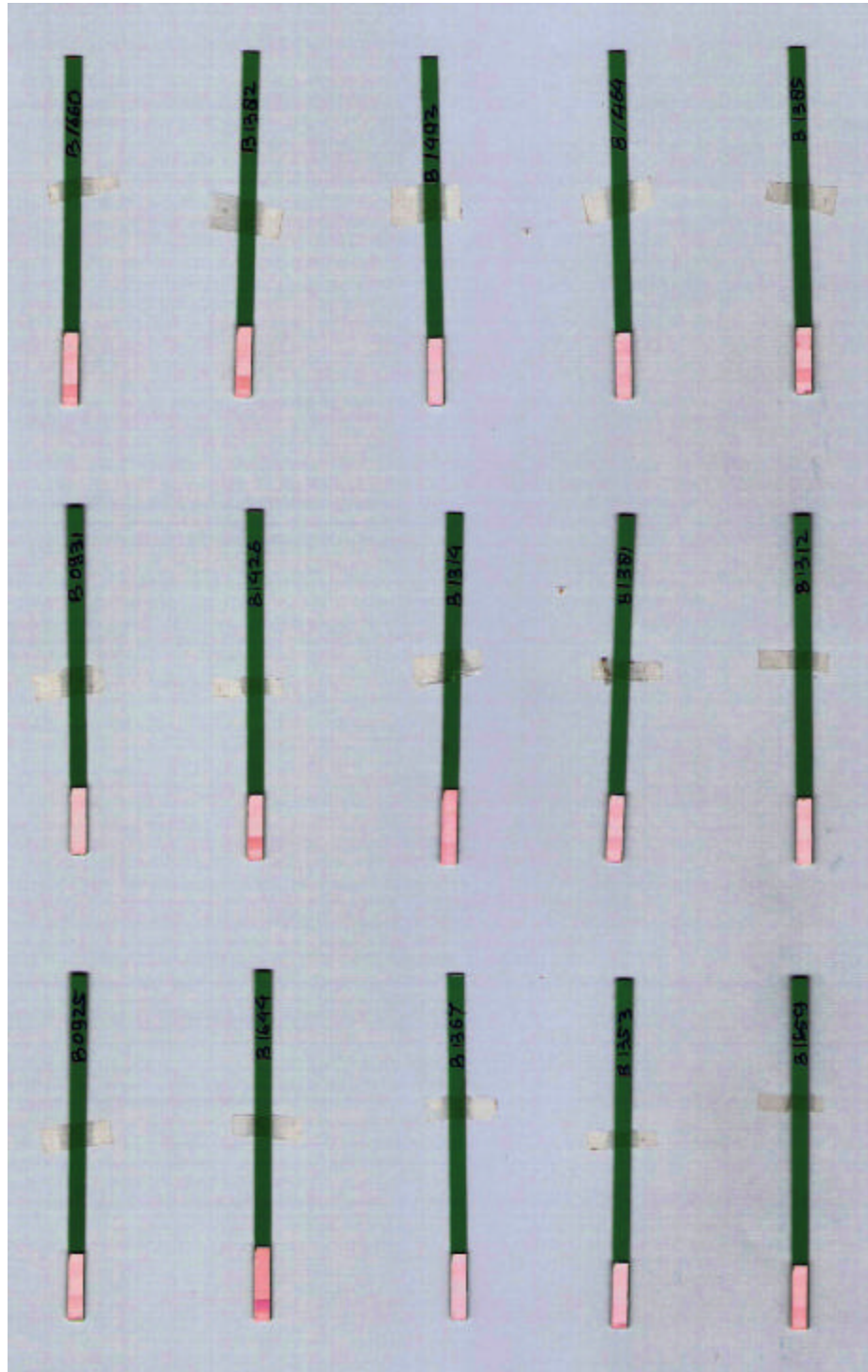
Lampiran 7. Foto Hasil Kultur darah deteksi *S. typhi* pada medium SSA



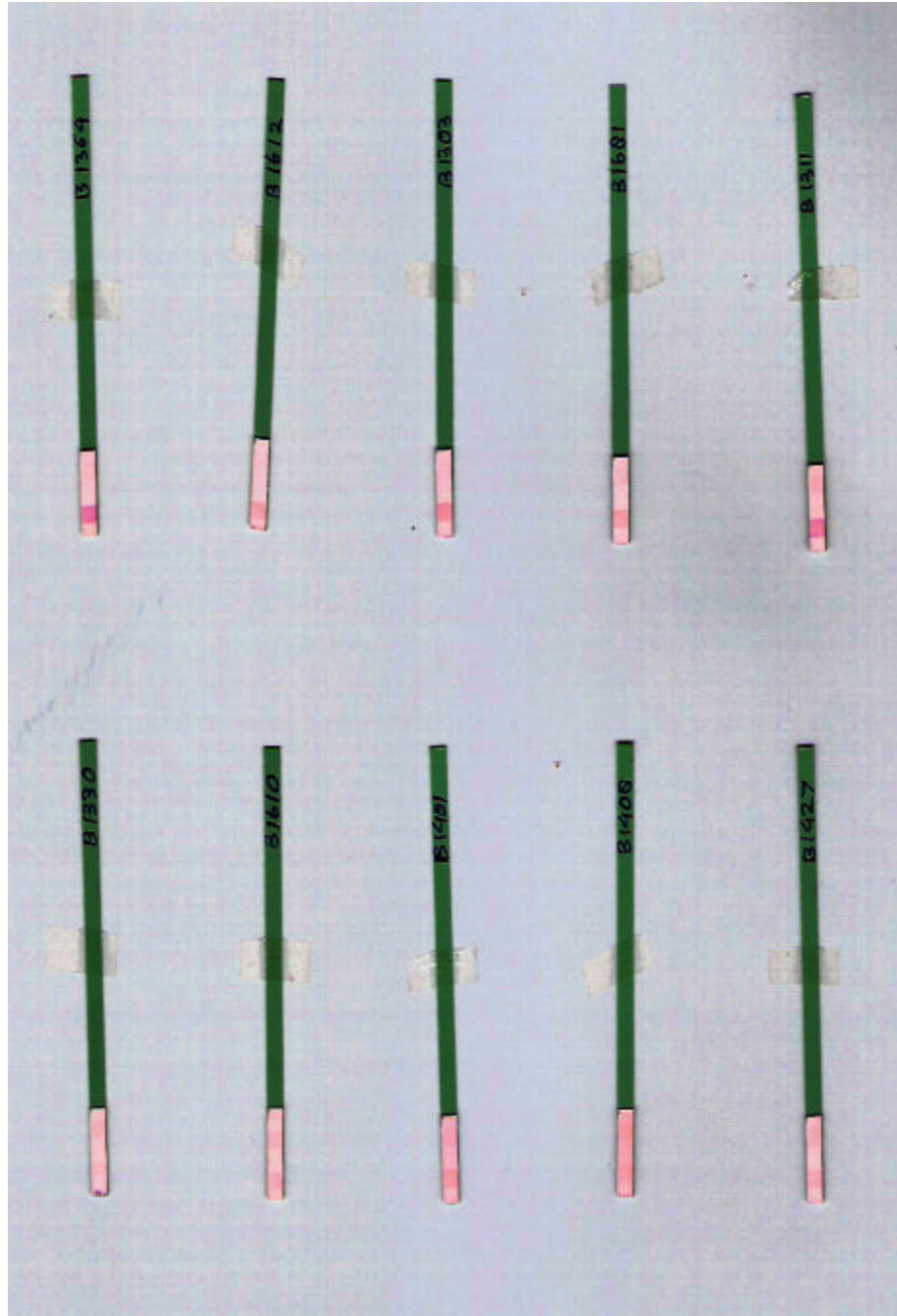
Lampiran 8 . Foto Hasil Uji Biokimia



Lampiran 9 . Foto Hasil Tes Dipstik pada Sampel Penderita Demam Tifoid



Lanjutan Lampiran 9.



Lampiran 10

Data Dasar Penderita Demam Tifoid

NO	UMUR	SEX	LAMA DEMAM	NO.DARAH	HASIL KULTUR	HASIL DIPSTIK	SUMBER
B1	42	M	7	B1660	POSITIF	+4	UPG
B2	14	M	6	B1382	POSITIF	+4	RS.Daya
B3	16	F	6	B1492	POSITIF	+1	RSWS
B4	13	F	4	B1464	POSITIF	+2	UPG
B5	34	M	6	B1385	POSITIF	+3	RS.Daya
B6	42	M	4	B0931	POSITIF	+1	UPG
B7	44	F	5	B1426	POSITIF	+4	RS.Daya
B8	19	F	7	B1314	POSITIF	+3	UPG
B9	24	M	4	B1381	POSITIF	+3	RS.Daya
B10	18	F	8	B1312	POSITIF	+2	KASSI
B11	47	M	7	B0925	POSITIF	+2	RS.Daya
B12	33	F	6	B1644	POSITIF	+4	UPG
B13	52	F	7	B1367	POSITIF	+1	RSWS
B14	41	M	5	B1353	POSITIF	+1	RS.Daya
B15	31	M	8	B1659	POSITIF	+2	UPG
B16	20	M	9	B1364	POSITIF	+4	RSWS
B17	32	M	6	B1612	POSITIF	+3	RSWS
B18	56	F	5	B1303	POSITIF	+4	KASSI
B19	27	M	6	B1681	POSITIF	+3	RSWS
B20	45	F	7	B1311	POSITIF	+7	GOWA
B21	53	F	7	B1330	POSITIF	+1	RSWS
B22	45	M	5	B1610	POSITIF	+2	KASSI
B23	28	F	8	B1401	POSITIF	+3	RS.Daya
B24	21	M	6	B1408	POSITIF	+2	UPG
B25	32	M	6	B1427	POSITIF	+2	RSWS

Keterangan: F = Perempuan; M= Laki-laki, UPG = Ujung Pandang, RSWA = RS.Wahidin Sudirohusodo

Lampiran 11**Data Dasar Orang Normal**

NO	UMUR	SEX	LAMA DEMAM	NO.DARAH	HASIL KULTUR	HASIL DIPSTIK	SUMBER
A1	31	M	ND	A0380	ND	NEGATIF	DTD
A2	18	F	ND	A0413	ND	NEGATIF	DTD
A3	21	M	ND	A0484	ND	NEGATIF	DTD
A4	41	M	ND	A0412	ND	NEGATIF	DTD
A5	35	F	ND	A0414	ND	NEGATIF	DTD
A6	52	F	ND	A0389	ND	NEGATIF	DTD
A7	45	M	ND	A0499	ND	NEGATIF	DTD
A8	57	M	ND	A0469	ND	NEGATIF	DTD
A9	45	F	ND	A0376	ND	NEGATIF	DTD
A10	50	F	ND	A0410	ND	NEGATIF	DTD
A11	42	F	ND	A0388	ND	NEGATIF	DTD
A12	35	F	ND	A0387	ND	NEGATIF	DTD
A13	18	M	ND	A2369	ND	NEGATIF	DTD
A14	24	F	ND	A0400	ND	NEGATIF	DTD
A15	45	F	ND	A0403	ND	NEGATIF	DTD
A16	47	M	ND	A1606	ND	NEGATIF	DTD
A17	57	F	ND	A0375	ND	NEGATIF	DTD
A18	32	M	ND	A0402	ND	NEGATIF	DTD
A19	57	M	ND	A0415	ND	NEGATIF	DTD
A20	45	M	ND	A0496	ND	NEGATIF	DTD
A21	50	M	ND	A0411	ND	NEGATIF	DTD
A22	42	F	ND	A2317	ND	NEGATIF	DTD
A23	35	M	ND	A2247	ND	NEGATIF	DTD
A24	42	F	ND	A2260	ND	NEGATIF	DTD
A25	50	F	ND	A2738	ND	NEGATIF	DTD

Keterangan: F = Perempuan, M = Laki-laki, ND = tidak demam, DTD = Dinas Transfusi Darah