

DAFTAR PUSTAKA

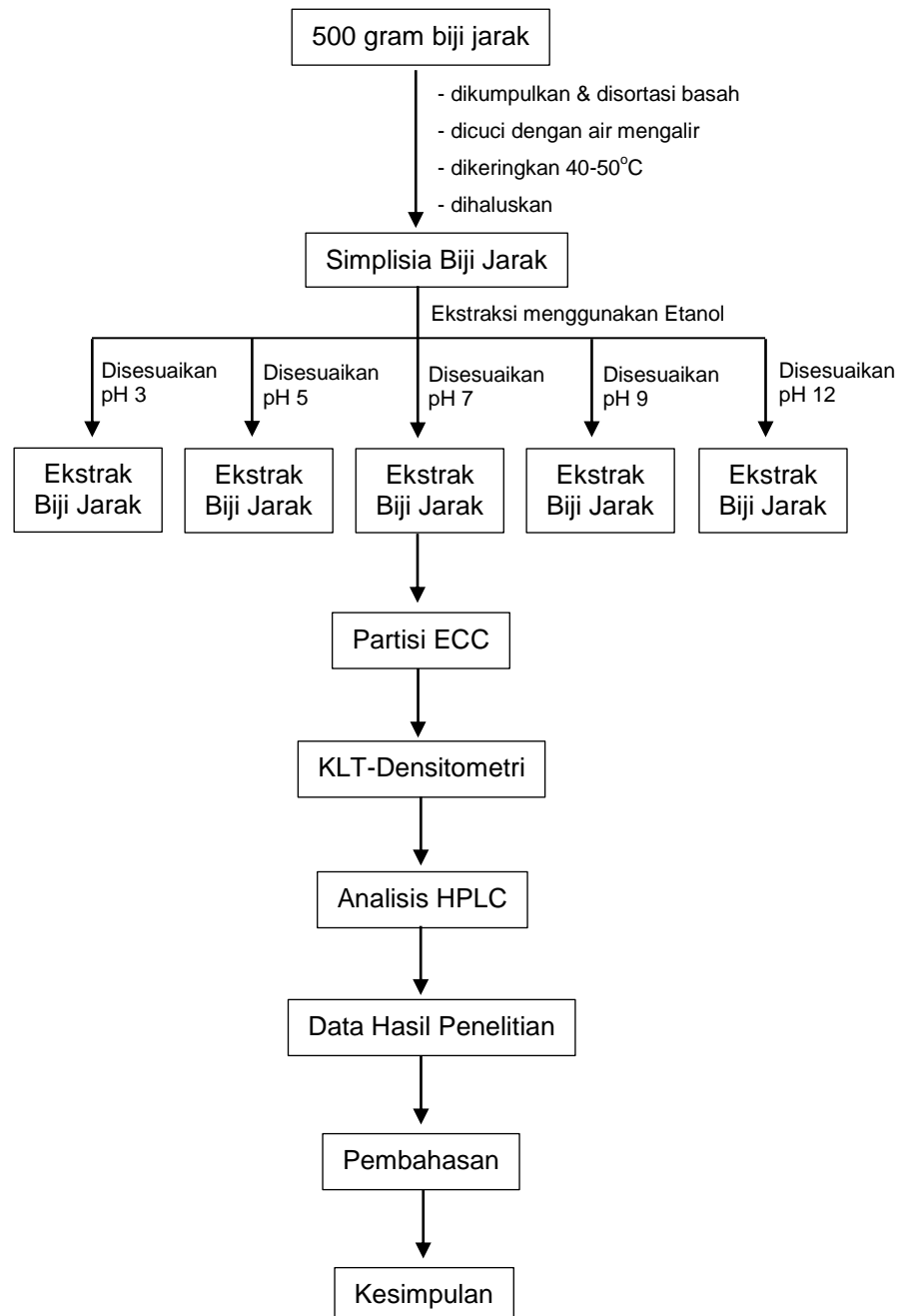
- Almeida RN, Navarro DS, Barbosa-Filho JM. 2001. Plants with central analgesic activity. *Phytomedicine*. 8. (4): 310-322.
- Alugah CI, Ibraheem O. 2014. Whole plant screenings for flavonoids and tannins contents in castor plant (*Ricinus communis* L.) and evaluation of their biological activities. *Int J Herbal Med*. 2. (2): 68-76.
- Bouayad N, Rharrabe K, Lamhamdi M, Nourouti NG, Sayah F. 2012. Dietary effects of harmine, a b-carboline alkaloid, on development, energy reserves and a amylase activity of *Plodia interpunctella* Hubner (Lepidoptera: Pyralidae). *Saudi J Biol Sci*. 19. (1): 73-80.
- Cahyo, A. 2015. *Teknologi Ekstraksi Senyawa Bahan Aktif dari Tanaman Obat*. Plantaxia. Yogyakarta.
- Cronquist, A. 1981. *An Integrated System of Classification of Flowering Plants*. Columbia University Press. New York.
- Cazes, Jack. 2008. *Thin Layer Chromatography in Phytochemistry*. CRC Press is an imprint of Taylor & Francis Group, an Informa business. New York.
- Darby SM, Miller ML, Allen RO. 2001. Forensic determination of ricin and the alkaloid marker ricinine from castor bean extracts. *J Forensic Sci*. (46): 1033-42.
- Departemen Kesehatan RI. 2008. *Farmakope Herbal Indonesia edisi I*. Jakarta.
- Dubeck, M. 1952. In the alkloid. *Biol Chem*.199, 307
- Endarini, L.H. 2016. *Farmakognosi dan Fitokimia*. Jakarta: Kementrian Kesehatan RI.
- Ferraz AC, Anselmo-Franci JA, Perosa SR. 2002. Amino acid and monoamine alterations in the cerebral cortex and hippocampus of mice submitted to ricinine-induced seizures. *Pharmacol Biochem Behav*. (72) :779-786.
- Friedman M, Rasooly R. 2013. Review of the inhibition of biological activities of food-related selected toxins by natural compounds. *Toxins*. 5. (4): 743-775.

- Gandjar, I.G dan Rohman, A. 2007. *Kimia Farmasi Analisis*. Yogyakarta. Pustaka Pelajar. 419-454.
- Gritter, J.R., Bobbit, JM., dan Scharting, A.E., 1991. *Pengantar Kromatografi*. Terjemahkan oleh Kosasih Pamawinata, Edisi II. Bandung: Penerbit ITB.
- Harbone, J.B. 1987. *Metode Fitokimia Penuntun Cara Modern Menganalisa Tumbuhan*. Penerbit ITB. Bandung.
- Hardjono, 1985. *Kromatografi. Laboratorium Analisa Kimia Fisika Pusat*. UGM. Yogyakarta.
- Jitendra, J. and Ashishkumar, G. (2012). Ricinus communis L.: A Phytopharmacological Review. Intern. J. Pharmacy and Pharmaceutical Sc., 4(4): 25-29.
- Kinsella, , J. E. 1979. Fungsional Properties of Soybean Protein. J. American Oil. Chem. Soc. 56 : 242-257.
- Kirk, R. E. and Othmer, D. F., Encyclopedia Chemical Technology, Vol. 1, The Interscience Encyclopedia., Inc., New York, p. 468, (1947).
- Masniary L.L. 2008. *Ekstraksi Pati dari Biji Alpukat. Departemen Teknologi Pertanian*. Universitas Sumatera Utara. Medan.
- Munawarah, S. & Handayani, P.A (2010). Ekstraksi Minyak Daun Jeruk Purut (Cytrus hydtrik D.C) Dengan Pelarut Etanol dan N-Heksan. *Jurnal Kompetensi Teknik*. 2. (1): 73-78.
- Noor, Rasuane dan Triana. A. 2018. Tumbuhan Obat di Masyarakat Suku Semendo di Kecamatan Way Tenong Kabupaten Lampung Barat. UM Metro. *Prosiding Seminar Nasional*. Lembaga Penelitian UM Metro.
- Ogunniyi, D.S. 2006). Castor Oil A Vital Industrial Raw Material. *Bioresource Technology*. (97): 1086-1091.
- Patel K, Gadewar M, Tripathi R, Prasad SK, Patel DK. 2012. A review on medicinal importance, pharmacological activity and bioanalytical aspects of beta-carboline alkaloid 'Harmine'. *Asian Pac J Trop Biomed*. 2. (8): 660-4.
- Sastrohamidjojo, H. 2005. *Kromatografi*. Liberty. Yogyakarta.
- Singh PP, Ambika, Chauhan SMS. 2009. Activity guided isolation of antioxidants from the leaves of *Ricinus communis* L. *Food Chem*. 114. (3): 1069-1072.

- Sirait, M, 2007. *Penuntun fitokimia dalam farmasi*. Penerbit ITB. Bandung.
- Sudjaji, 1988. *Metode Pemisahan*. Cetakan pertama. Penerbit Kanisius. Yogyakarta
- S.M. Darby, M.L. Miller, and R.O. Allen. 2001. Forensic determination of ricin and the alkaloid marker ricinine from castor bean extracts. *Forensic Sci.* (46): 1033–1042
- Tunaru S, Althoff TF, Nusing RM, Diener M, Offermanns S. 2012. Castor oil induces laxation and uterus contraction via ricinoleic acid activating prostaglandin EP3 receptors. *Proc Natl Acad Sci USA*. 109. (23): 9179-9184.
- Tripathi AC, Gupta R, Saraf SK. 2010. Phytochemical investigation, characterisation and anticonvulsant activity of *Ricinus communis* seeds in mice. *Nat Prod Res.* (25): 1881-1884.
- Treyball, R.R., 1980. *Mass Transfer Operation*. Mcgraw-Hill Book Company, New York.
- Vandita P, Amin N, Khyati P, Monisha K. 2013. Effect of phytochemical constituents of *Ricinus communis*, *Pterocarpus santalinus*, *Terminalia belerica* on antibacterial, antifungal and cytotoxic activity. *Int J Toxicol Pharmacol Res.* 5. (2): 47-54.
- Wang Z, Defa Li, Zhou Z, Yang w. 2009. A Simple Method for Screening and Quantification of Ricinine in Feed with HPLC and LC-MS. *Jurnal of Chromatographic Science*.
- Wijayanti. 2013. Pengaruh Asam Terhadap Kandungan Alkaloid Pada Ekstrak Daun Salam (*Syzygium polyanthum*). 2 (3): 138-141.
- Worbs S, Kohler K, Pauly D, Avondet MA, Schaer M, Dorner MB. 2011. *Ricinus communis* intoxications in human and veterinary medicine-a summary of real cases. *Toxins (Basel)*. 3. (10): 1332-72.

LAMPIRAN

Lampiran 1. Skema kerja



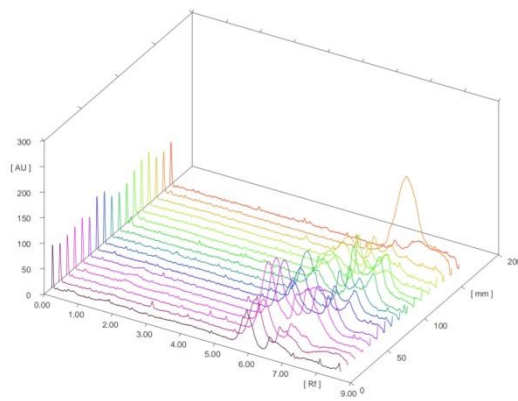
Lampiran 2. Persen Rendemen Ekstrak

Rumus perhitungan % rendemen

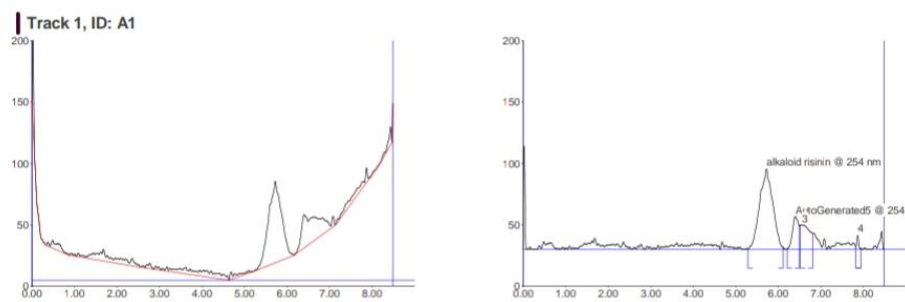
$$\% \text{ rendemen} = \frac{\text{Bobot ekstrak yang diperoleh}}{\text{Bobot simplisia kering}} \times 100\%$$

1. pH 3 = $\frac{5,56}{20} \times 100\% = 27,8\%$
2. pH 5 = $\frac{5,86}{20} \times 100\% = 29,3\%$
3. pH 7 = $\frac{6,69}{20} \times 100\% = 33,45\%$
4. pH 9 = $\frac{6,25}{20} \times 100\% = 31,25\%$
5. pH 12 = $\frac{7,9}{20} \times 100\% = 39,5\%$

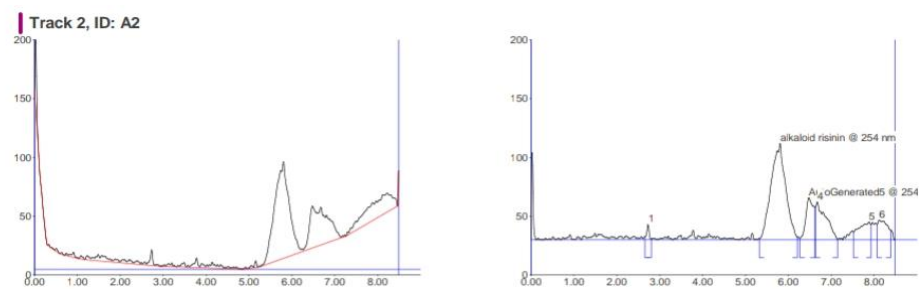
Lampiran 3. Hasil TLC-Scanner



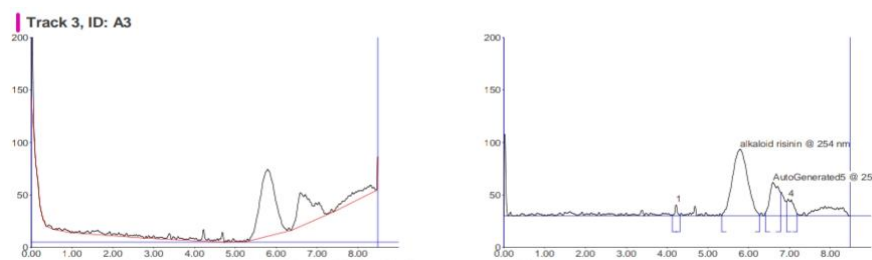
Gambar 18. Hasil kromatogram densitometri



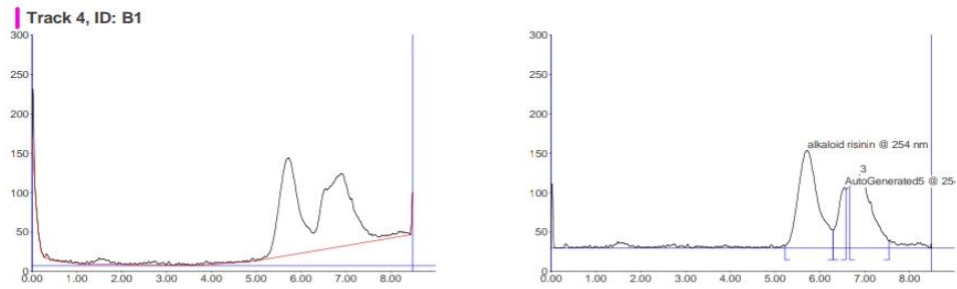
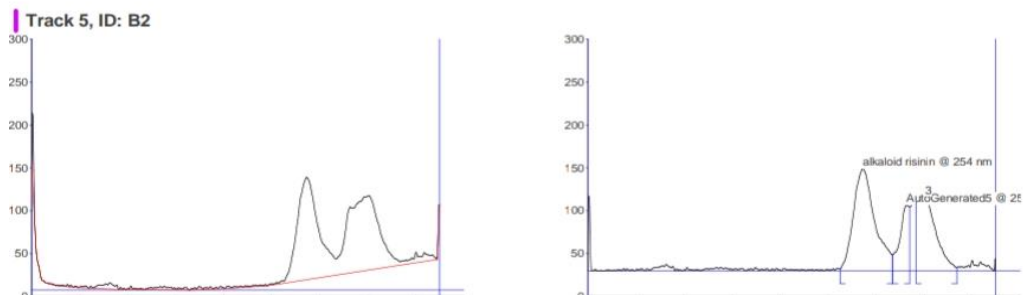
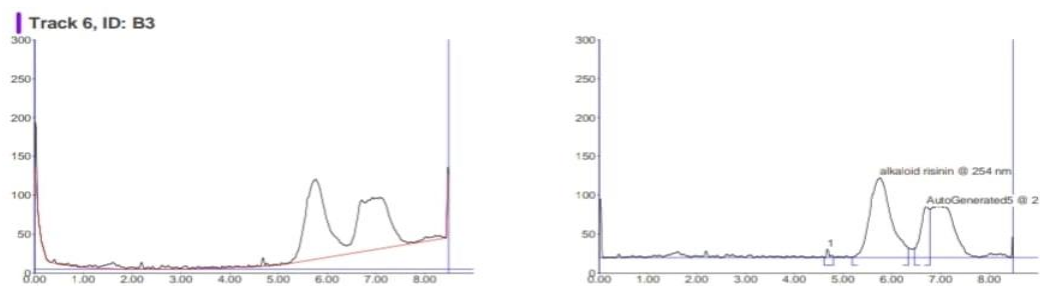
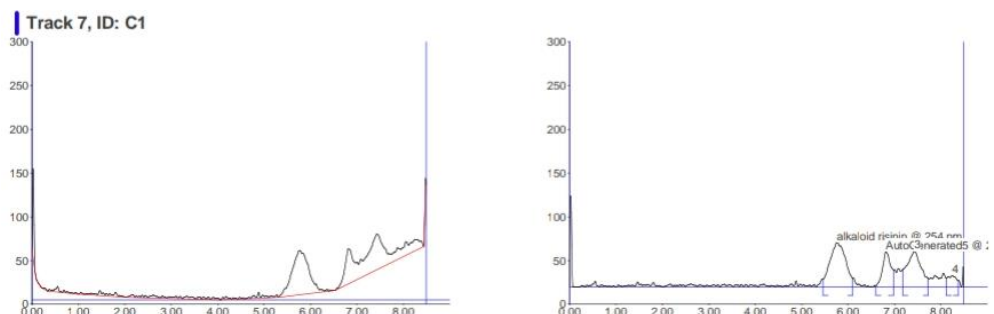
Gambar 19. Hasil KLT-Densitometri pH 3 (A₁)

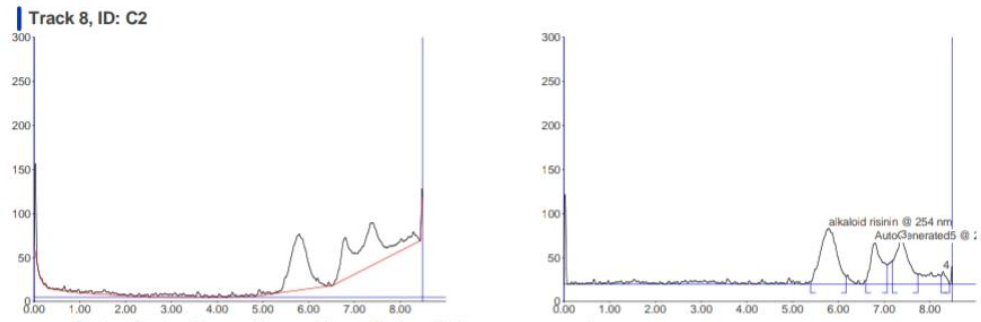
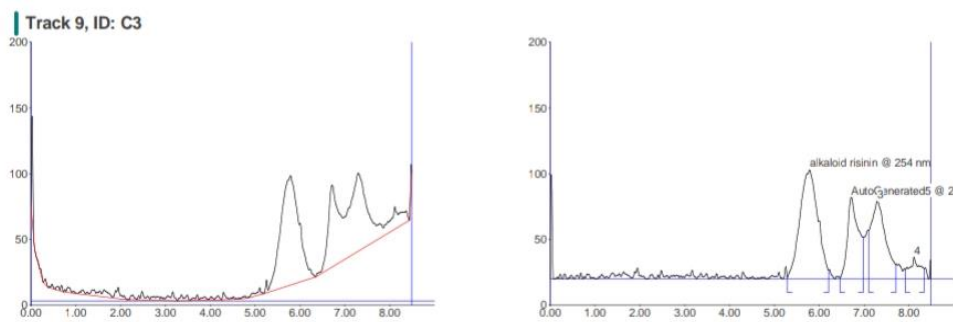
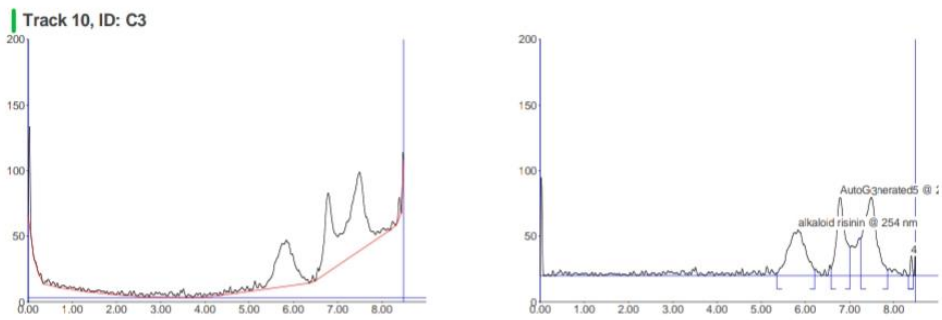
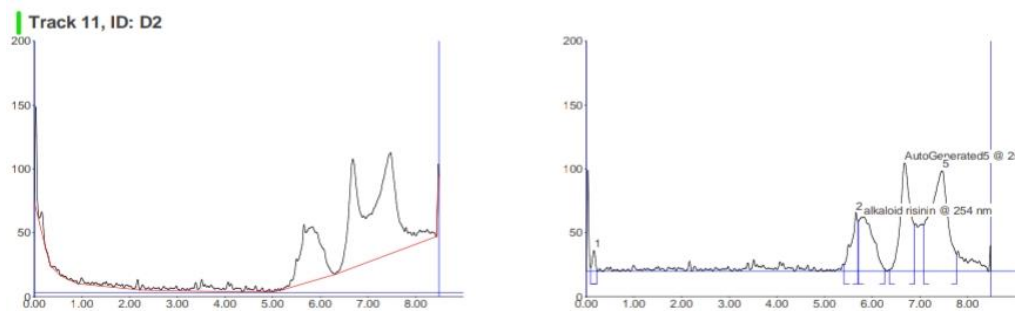


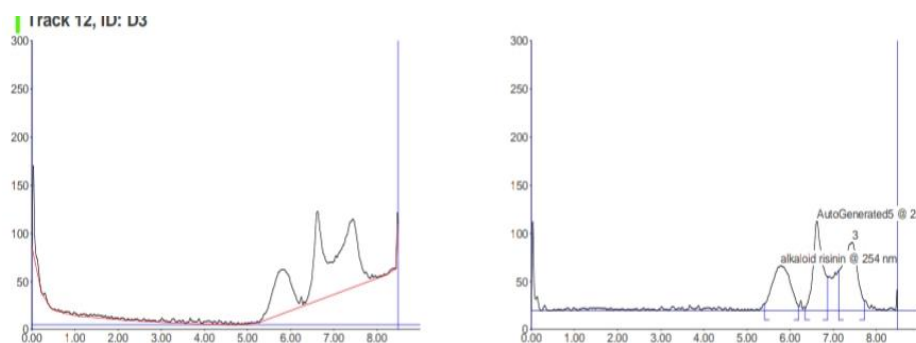
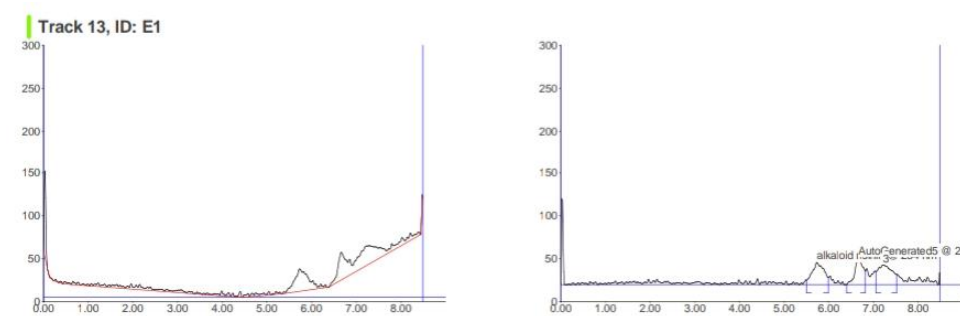
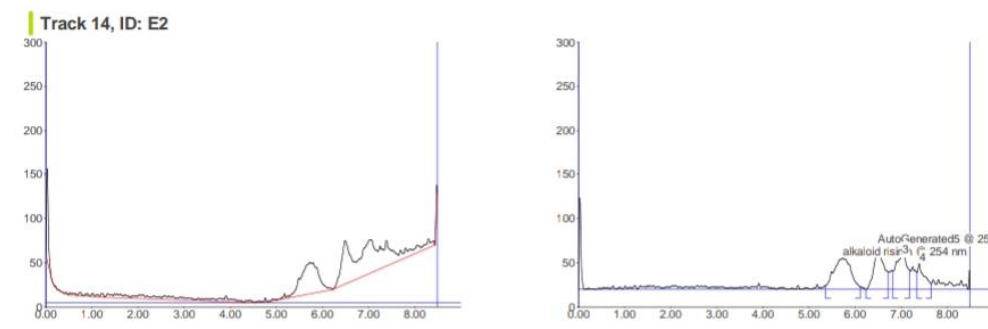
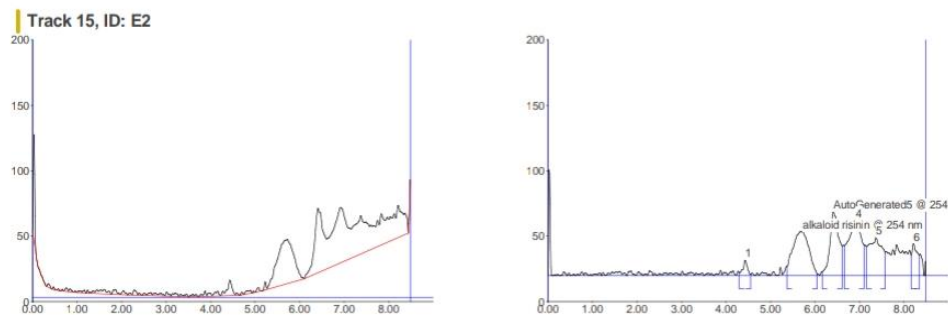
Gambar 20. Hasil KLT-Densitometri pH 3 (A₂)

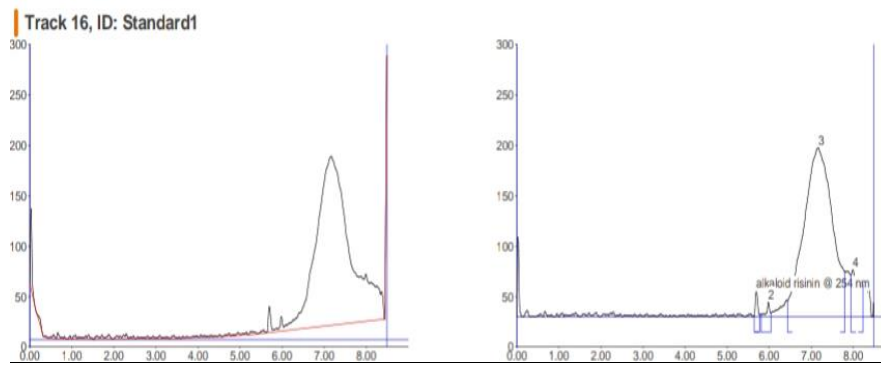


Gambar 21. Hasil KLT-Densitometri pH 3 (A₃)

Gambar 22. Hasil KLT-Densitometri pH 5 (B₁)Gambar 23. Hasil KLT-Densitometri pH 5 (B₂)Gambar 24. Hasil KLT-Densitometri pH 7 (B₃)Gambar 25. Hasil KLT-Densitometri pH 7 (C₁)

Gambar 26. Hasil KLT-Densitometri pH 7 (C₂)Gambar 27. Hasil KLT-Densitometri pH 7 (C₃)Gambar 28. Hasil KLT-Densitometri pH 9 (D₁)Gambar 29. Hasil KLT-Densitometri pH 9 (D₂)

Gambar 30. Hasil KLT-Densitometri pH 9 (D₃)Gambar 31. Hasil KLT-Densitometri pH 12 (E₁)Gambar 32. Hasil KLT-Densitometri pH 12 (E₂)Gambar 33. Hasil KLT-Densitometri pH 12 (E₃)



Gambar 34. Hasil KLT-Densitometri Pembanding (F)

Lampiran 4. Dokumentasi Penelitian



Gambar 9. Sampel biji jarak



Gambar 10. Penimbangan sampel



Gambar 11. Susut pengeringan



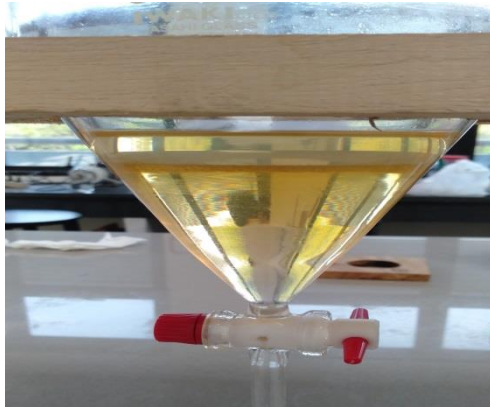
Gambar 12. pH meter



Gambar 13. Proses ekstraksi



Gambar 14. Ekstrak etanol biji jarak



Gambar 15. Proses partisi



Gambar 16. Hasil partisi



Gambar 17. Alat Densitometri