

DAFTAR PUSTAKA

- Alvarez, G., Yera-Grillo, D., Morua, A., Navarro-Estupiñán, J., Reyes-Castro, P., Encinas-Cárdenas, A., Duarte Tagles, H., & Candia Plata, M. del C. (2023). Spatial correlation of dengue with socioeconomic status and land temperature in northwest Mexico: Spatial correlation dengue. *Biotecnia*, 26.
- Anselin, L. (1988). *Spatial Econometrics: Methods and Models* (Vol. 4). Springer Science & Business Media.
- Arimie, C. O., Harcourt, P., Harcourt, P., & Harcourt, P. (2020). Outlier Detection and Effects on Modeling. *Open Access Library Journal*, 7(09), 1.
- Arsin, A. A. (2013). Epidemiologi Demam Berdarah Dengue (DBD) di Indonesia. *Makassar: Masagena Press. Diakses Pada*, 24.
- Djuraidah, A. (2021). *Monograph Penerapan dan Pengembangan Regresi Spasial dengan Studi Kasus pada Kesehatan, Sosial, dan Ekonomi*. PT Penerbit IPB Press.
- do Carmo, R. F., Silva Júnior, J. V. J., Pastor, A. F., & de Souza, C. D. F. (2020). Spatiotemporal dynamics, risk areas and social determinants of dengue in Northeastern Brazil, 2014–2017: an ecological study. *Infectious Diseases of Poverty*, 9(1), 153.
- Erda, G., & Djuraidah, A. (2019). Outlier handling of robust geographically and temporally weighted regression. *Journal of Physics: Conference Series*, 1175(1), 012041.
- Fotheringham, A. (2002). Geographically Weighted Regression/A. *Fotheringham, C. Brunson, M. Charlton. John Willey & Sons*, 269.
- Fotheringham, A. S., Crespo, R., & Yao, J. (2015). Geographical and temporal weighted regression (GTWR). *Geographical Analysis*, 47(4), 431–452.
- Fox, J. (2015). *Applied Regression Analysis and Generalized Linear Models*. Sage Publications.
- i, H., Maharja, R., Salcha, M. A., Gani, H., Wardhani, N., Nurani, N., Gani, N. F., & Maharja, R. (2022). Dengue Hemorrhagic Fever Incidence in



Indonesia Using Trend Analysis Test and Spatial Visualization. *International Journal of Public Health*, 11(4), 1190–1201.

Grekousis, G. (2020). Spatial Autocorrelation. In G. Grekousis (Ed.), *Spatial Analysis Methods and Practice: Describe – Explore – Explain through GIS* (pp. 207–274). Cambridge University Press

Huang, B., Wu, B., & Barry, M. (2010). Geographically and temporally weighted regression for modeling spatio-temporal variation in house prices. *International Journal of Geographical Information Science*, 24(3), 383–401.

Idris, N., Rais, R., & Utami, I. T. (2018). Aplikasi Regresi Kuantil pada Kasus DBD di Kota Palu Sulawesi Tengah. *Jurnal Ilmiah Matematika Dan Terapan*, 15(1), 108–117.

Khotimah, K., Sadik, K., & Rizki, A. (2020). *Study of Robust Regression Modeling Using MM-Estimator and Least Median Squares*.

LeSage, J. P. (1999). The Theory and Practice of Spatial Econometrics. *University of Toledo. Toledo, Ohio*, 28(11), 1–39.

Leung, Y., Mei, C.-L., & Zhang, W.-X. (2000). Testing for Spatial Autocorrelation Among the Residuals of the Geographically Weighted Regression. *Environment and Planning A*, 32(5), 871–890.

Liu, X., Lu, C.-T., & Chen, F. (2010). Spatial outlier detection: Random walk based approaches. *Proceedings of the 18th SIGSPATIAL International Conference on Advances in Geographic Information Systems*, 370–379.

Mardiana. (2019). *Perbandingan Model Regresi Robust Estimasi M, Estimasi S dan Estimasi MM pada Faktor yang Mempengaruhi Angka Kejadian Demam Berdarah Dengue Di Provinsi Jawa Timur Tahun 2017*. Universitas Airlangga.

Medronho, R. de A., & Queiroz, E. R. da S. (2021). Spatial analysis of the incidence of Dengue, Zika and Chikungunya and socioeconomic determinants in the city of Rio de Janeiro, Brazil. *Epidemiology and Infection*, 149, e188.

ila, A., & Yotenka, R. (2021). Spasial Data Panel Dalam Menentukan Faktor-Faktor Yang Berpengaruh Terhadap Jumlah Kasus Demam



Berdarah Dengue (DBD). *Unisda Journal of Mathematics and Computer Science (UJMC)*, 7(2), 49–60.

Nakaya, T., Fotheringham, A. S., Brunson, C., & Charlton, M. (2005). Geographically Weighted Poisson Regression for Disease Association Mapping. *Statistics in Medicine*, 24(17), 2695–2717.

Nugroho, W. H., & Sumarminingsih, E. (2021). Geographically and Temporally Weighted Regression Model with Gaussian Kernel Weighted Function and Bisquare Kernel Weighted Function. *IOP Conference Series: Materials Science and Engineering*, 1115(1), 012063.

Putra, Z. (2019). *Model Regresi Terboboti Geografis Temporal Kekar untuk Tingkat Kriminalitas di Provinsi Jawa Tengah dan Provinsi Jawa Timur*. Institut Pertanian Bogor.

Rahman, M. B., & Widodo, E. (2018). Perbandingan Metode Regresi Robust Estimasi Least Trimmed Square, Estimasi Scale, dan Estimasi Method Of Moment. *PRISMA, Prosiding Seminar Nasional Matematika*, 1, 426–433.

Rawlings, J. O., Pantula, S. G., & Dickey, D. A. (1998). *Applied Regression Analysis: A Research Tool*. Springer.

Rousseeuw, P., & Yohai, V. (1984). Robust regression by means of S-estimators. In *Robust and nonlinear time series analysis* (pp. 256–272). Springer.

Saputro, D. R. S., Widyaningsih, P., Kurdi, N. A., & Hardanti & Susanti, A. (2017). Local Indicator of Spatial Association (LISA) Cluster Map untuk Identifikasi Penyebaran dan Pemetaan Penyakit Demam Berdarah Dengue (DBD) di Jawa Tengah. *Program Studi Matematika FMIPA UNS*.

Setiarini, Z., & Listyani, E. (2017). Analisis Regresi Robust Estimasi-S Menggunakan Pembobot Welsch dan Tukey Bisquare. *Jurnal Kajian Dan Terapan Matematika*, 6(1), 48–55.

Shodiqin, A., Aini, A. N., & Rubowo, M. R. (2018). Perbandingan Dua Metode Regresi Robust yakni Metode Least Trimmed Squares (LTS) dengan metode Estimator-MM (Estmasi-MM)(Studi Kasus Data Ujian Tulis



Masuk Terhadap Hasil IPK Mahasiswa UPGRIS). *Jurnal Ilmiah Teknosains*, 4(1), 35–42.

Sholihin, M. (2018). *Pengembangan Regresi Terboboti Geografis dan Temporal Menggunakan Ineteraksi Jarak Spasial-Temporal (Studi Kasus: Pertumbuhan Ekonomi di Jawa Tengah Tahun 2011-2015)*. Institut Pertanian Bogor.

Sifriyani, Mandang, I., Amijaya, F. D. T., Sholihin, M., & Dani, A. T. R. (2022). A Spatial-Temporal Description of Covid-19 Cases in East Borneo Using Improved Geographically and Temporally Weighted Regression (I-GTWR). *Communications in Mathematical Biology and Neuroscience*, 2022.

Susanti, Y., Pratiwi, H., Sulistijowati, S., & Liana, T. (2014). M estimation, S estimation, and MM Astimation in Robust Regression. *International Journal of Pure and Applied Mathematics*, 91(3), 349–360.

World Health Organization. (2023, March 17). *Dengue and severe dengue*. <https://www.who.int/news-room/fact-sheets/detail/dengue-and-severe-dengue>.

Wu, B., Li, R., & Huang, B. (2014). A Geographically and Temporally Weighted Autoregressive Model with Application to Housing Prices. *International Journal of Geographical Information Science*, 28(5), 1186–1204.

Yan, X., & Su, X. (2009). *Linear Regression Analysis: Theory and Computing*. world scientific.

Yohai, V. J. (1987). High Breakdown-Point and High Efficiency Robust Estimates for Regression. *The Annals of Statistics*, 642–656.

Yu, C., & Yao, W. (2017). Robust Linear Regression: A Review and Comparison. *Communications in Statistics-Simulation and Computation*, 46(8), 6261–6282.

Zhang, H., & Mei, C. (2011). Local Least Absolute Deviation Estimation of Spatially Varying Coefficient Models: Robust Geographically Weighted Regression Approaches. *International Journal of Geographical Information Science*, 25(9), 1467–1489.



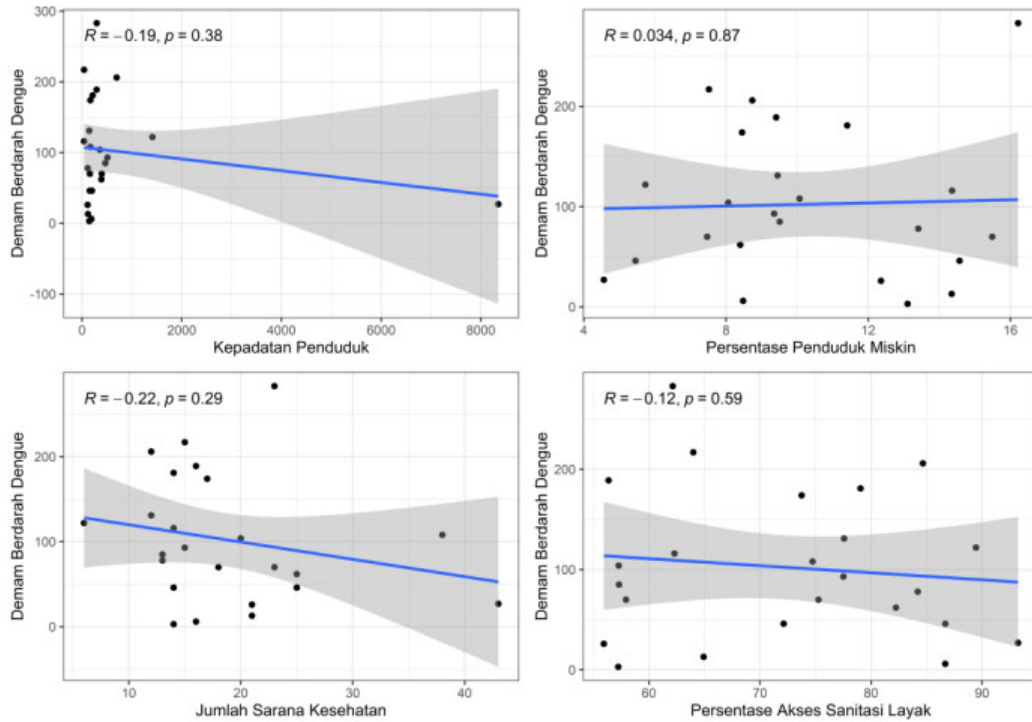
LAMPIRAN



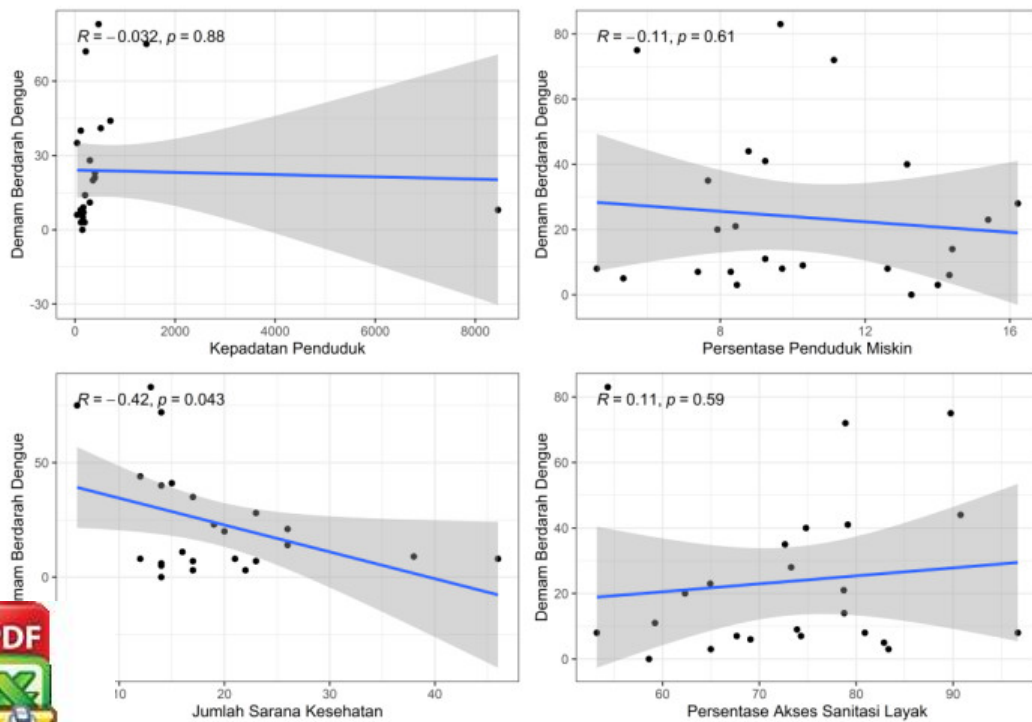
Optimized using
trial version
www.balesio.com

Lampiran 1. Hubungan Linear Variabel Bebas Terhadap Variabel Terikat Tahun 2016 – 2021

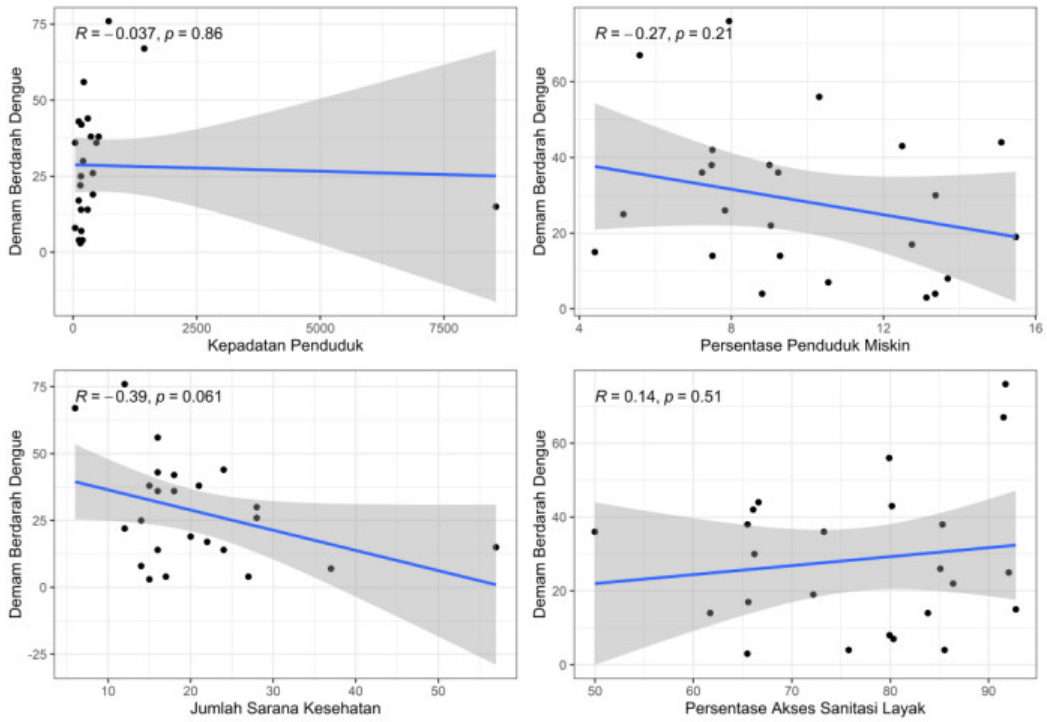
a. Tahun 2016



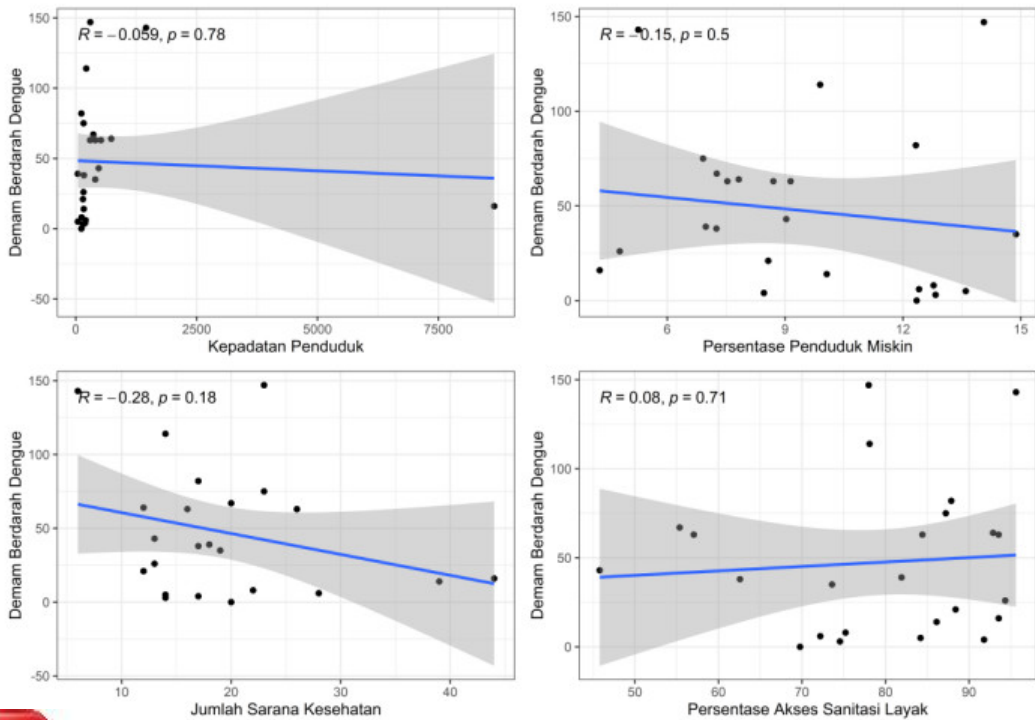
b. Tahun 2017



c. Tahun 2018

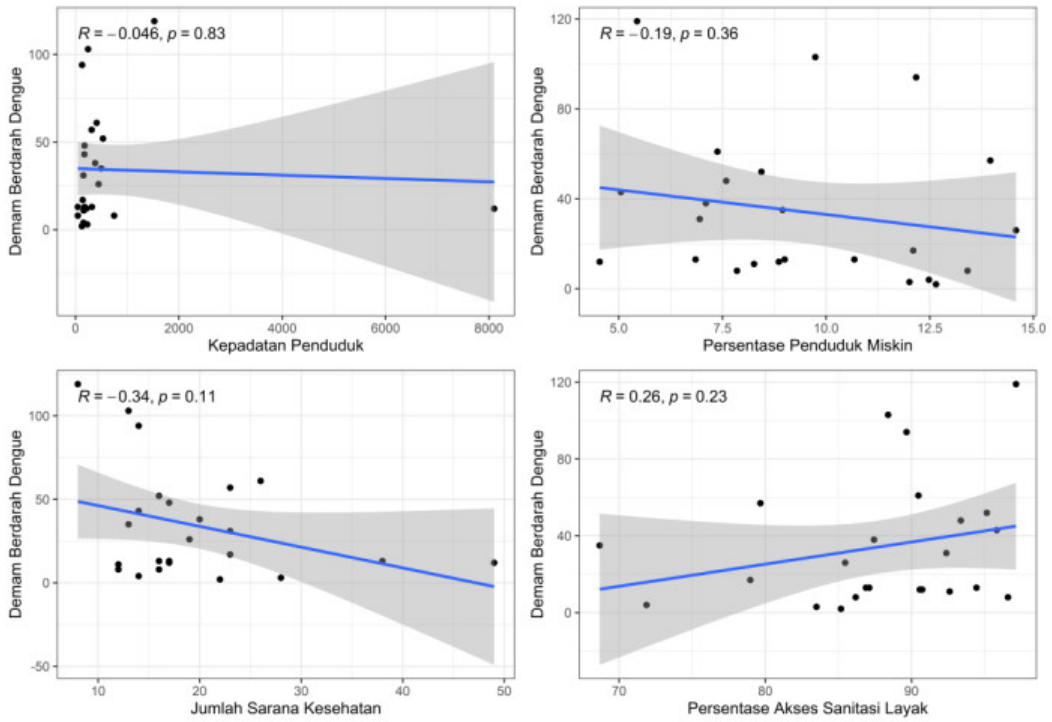


d. Tahun 2019

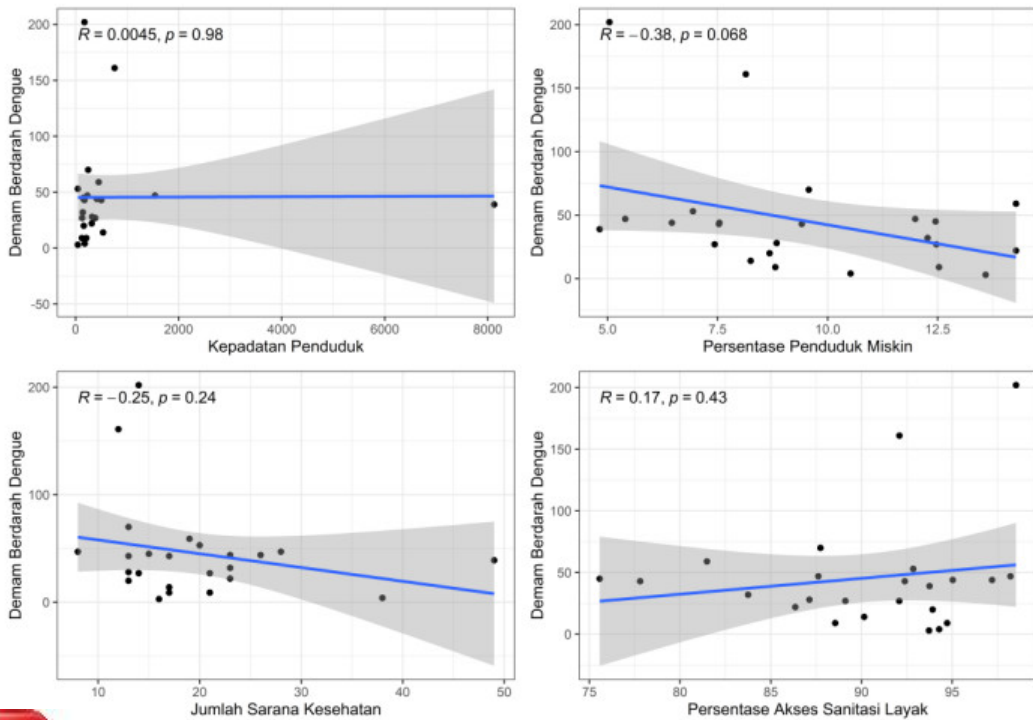


Optimized using
trial version
www.balesio.com

e. Tahun 2020



f. Tahun 2021



Optimized using
trial version
www.balesio.com

Lampiran 2. Hasil Analisis RWBP Model IGTWR dan RIGTWR Tahun 2016

No.	Kabupaten/Kota	Model IGTWR		Model RIGTWR	
		Nilai Kemiripan	Nilai Peluang	Nilai Kemiripan	Nilai Peluang
1	Bantaeng	0.8672	0.2943	0.8872	0.2836
2	Barru	0.8819	0.2580	0.9907	0.0000
3	Bone	0.8293	0.3878	0.9291	0.1687
4	Bulukumba	0.8654	0.2987	0.8841	0.2922
5	Enrekang	0.8836	0.2538	0.9407	0.1370
6	Gowa	0.8678	0.2926	0.8833	0.2943
7	Jeneponto	0.8682	0.2919	0.8775	0.3102
8	Kepulauan Selayar	0.8690	0.2897	0.8850	0.2896
9	Kota Makassar	0.8702	0.2868	0.8862	0.2864
10	Kota Palopo	0.9269	0.1468	0.8967	0.2576
11	Kota Parepare	0.8792	0.2647	0.9857	0.0137
12	Luwu	0.8834	0.2542	0.7055	0.7814
13	Luwu Timur	0.9864	0.0000	0.8978	0.2544
14	Luwu Utara	0.9285	0.1429	0.6688	0.8818
15	Maros	0.5812	1.0000	0.8837	0.2933
16	Pangkajene Dan Kepulauan	0.9286	0.1428	0.9391	0.1414
17	Pinrang	0.5920	0.9733	0.9419	0.1337
18	Sidenreng Rappang	0.8834	0.2541	0.9395	0.1402
19	Sinjai	0.5812	0.9998	0.6257	1.0000
20	Soppeng	0.8838	0.2532	0.9836	0.0195
21	Takalar	0.8675	0.2935	0.6613	0.9024
22	Tana Toraja	0.9261	0.1489	0.8954	0.2611
23	Toraja Utara	0.9262	0.1486	0.8964	0.2582
24	Wajo	0.6565	0.8142	0.9395	0.1402



Lampiran 3. Hasil Analisis RWBP Model IGTWR dan RIGTWR Tahun 2017

No.	Kabupaten/Kota	Model IGTWR		Model RIGTWR	
		Nilai Kemiripan	Nilai Peluang	Nilai Kemiripan	Nilai Peluang
1	Bantaeng	0.5239	1.0000	0.5483	0.8937
2	Barru	0.9297	0.0972	0.4955	1.0000
3	Bone	0.6524	0.7140	0.8097	0.3667
4	Bulukumba	0.8594	0.2536	0.8602	0.2649
5	Enrekang	0.9427	0.0683	0.9868	0.0099
6	Gowa	0.8521	0.2699	0.8585	0.2685
7	Jeneponto	0.8584	0.2560	0.8601	0.2651
8	Kepulauan Selayar	0.8584	0.2558	0.8606	0.2642
9	Kota Makassar	0.8574	0.2582	0.8614	0.2626
10	Kota Palopo	0.9458	0.0615	0.9913	0.0008
11	Kota Parepare	0.9734	0.0000	0.8650	0.2553
12	Luwu	0.7051	0.5969	0.9848	0.0138
13	Luwu Timur	0.9389	0.0769	0.9828	0.0179
14	Luwu Utara	0.9389	0.0769	0.9863	0.0109
15	Maros	0.8002	0.3854	0.5474	0.8955
16	Pangkajene Dan Kepulauan	0.9316	0.0930	0.8130	0.3602
17	Pinrang	0.9451	0.0631	0.9388	0.1065
18	Sidenreng Rappang	0.9438	0.0659	0.8675	0.2503
19	Sinjai	0.5371	0.9705	0.8588	0.2678
20	Soppeng	0.9397	0.0750	0.5987	0.7922
21	Takalar	0.8574	0.2582	0.8614	0.2626
22	Tana Toraja	0.9434	0.0669	0.9913	0.0008
23	Toraja Utara	0.9419	0.0701	0.9917	0.0000
24	Wajo	0.9440	0.0655	0.8736	0.2381



Lampiran 4. Hasil Analisis RWBP Model IGTWR dan RIGTWR Tahun 2018

No.	Kabupaten/Kota	Model IGTWR		Model RIGTWR	
		Nilai Kemiripan	Nilai Peluang	Nilai Kemiripan	Nilai Peluang
1	Bantaeng	0.9925	0.0000	0.9291	0.1535
2	Barru	0.9793	0.0354	0.8836	0.2670
3	Bone	0.9810	0.0310	0.8331	0.3932
4	Bulukumba	0.9923	0.0004	0.9296	0.1523
5	Enrekang	0.9255	0.1806	0.9889	0.0041
6	Gowa	0.9804	0.0326	0.5901	1.0000
7	Jeneponto	0.9910	0.0040	0.9227	0.1694
8	Kepulauan Selayar	0.9919	0.0015	0.9210	0.1738
9	Kota Makassar	0.9916	0.0024	0.8725	0.2949
10	Kota Palopo	0.8783	0.3077	0.9903	0.0006
11	Kota Parepare	0.9276	0.1749	0.8955	0.2373
12	Luwu	0.8737	0.3201	0.9818	0.0220
13	Luwu Timur	0.9288	0.1715	0.9796	0.0274
14	Luwu Utara	0.8729	0.3221	0.9900	0.0013
15	Maros	0.9907	0.0047	0.8845	0.2648
16	Pangkajene Dan Kepulauan	0.9888	0.0100	0.6225	0.9192
17	Pinrang	0.6213	1.0000	0.9281	0.1560
18	Sidenreng Rappang	0.9184	0.1995	0.9325	0.1450
19	Sinjai	0.9918	0.0017	0.8789	0.2789
20	Soppeng	0.9852	0.0195	0.6677	0.8063
21	Takalar	0.9804	0.0326	0.8836	0.2672
22	Tana Toraja	0.8706	0.3285	0.9906	0.0000
23	Toraja Utara	0.6539	0.9121	0.9890	0.0038
24	Wajo	0.9184	0.1995	0.9400	0.1264



Lampiran 5. Hasil Analisis RWBP Model IGTWR dan RIGTWR Tahun 2019

No.	Kabupaten/Kota	Model IGTWR		Model RIGTWR	
		Nilai Kemiripan	Nilai Peluang	Nilai Kemiripan	Nilai Peluang
1	Bantaeng	0.9231	0.1697	0.9248	0.1512
2	Barru	0.8492	0.3553	0.8073	0.4088
3	Bone	0.8817	0.2738	0.8520	0.3107
4	Bulukumba	0.8854	0.2643	0.8807	0.2480
5	Enrekang	0.9019	0.2227	0.8868	0.2344
6	Gowa	0.8794	0.2793	0.8553	0.3035
7	Jeneponto	0.9241	0.1671	0.9198	0.1621
8	Kepulauan Selayar	0.6598	0.8315	0.6548	0.7429
9	Kota Makassar	0.8814	0.2743	0.8554	0.3033
10	Kota Palopo	0.9456	0.1129	0.9303	0.1392
11	Kota Parepare	0.6415	0.8776	0.6041	0.8542
12	Luwu	0.9426	0.1206	0.9308	0.1380
13	Luwu Timur	0.9486	0.1055	0.9325	0.1343
14	Luwu Utara	0.9905	0.0000	0.9938	0.0000
15	Maros	0.8845	0.2666	0.8549	0.3045
16	Pangkajene Dan Kepulauan	0.7076	0.7115	0.5742	0.9198
17	Pinrang	0.8908	0.2507	0.8740	0.2625
18	Sidenreng Rappang	0.6725	0.7997	0.5956	0.8728
19	Sinjai	0.5928	1.0000	0.5376	1.0000
20	Soppeng	0.8601	0.3281	0.8202	0.3804
21	Takalar	0.8849	0.2656	0.8553	0.3035
22	Tana Toraja	0.9423	0.1212	0.9263	0.1479
23	Toraja Utara	0.9463	0.1111	0.9303	0.1392
24	Wajo	0.9009	0.2254	0.8858	0.2368



Lampiran 6. Hasil Analisis RWBP Model IGTWR dan RIGTWR Tahun 2020

No.	Kabupaten/Kota	Model IGTWR		Model RIGTWR	
		Nilai Kemiripan	Nilai Peluang	Nilai Kemiripan	Nilai Peluang
1	Bantaeng	0.9015	0.1528	0.9412	0.1144
2	Barru	0.9390	0.0171	0.6253	0.8508
3	Bone	0.9411	0.0096	0.8395	0.3514
4	Bulukumba	0.8968	0.1696	0.9418	0.1131
5	Enrekang	0.8877	0.2024	0.9288	0.1434
6	Gowa	0.6741	0.9745	0.6611	0.7673
7	Jeneponto	0.8996	0.1594	0.9435	0.1089
8	Kepulauan Selayar	0.9003	0.1569	0.9448	0.1059
9	Kota Makassar	0.9016	0.1525	0.8815	0.2535
10	Kota Palopo	0.8929	0.1837	0.9887	0.0036
11	Kota Parepare	0.7073	0.8543	0.6276	0.8453
12	Luwu	0.9394	0.0159	0.9864	0.0089
13	Luwu Timur	0.8980	0.1653	0.9899	0.0008
14	Luwu Utara	0.6683	0.9953	0.9903	0.0000
15	Maros	0.8893	0.1969	0.8697	0.2810
16	Pangkajene Dan Kepulauan	0.8978	0.1659	0.5613	1.0000
17	Pinrang	0.8925	0.1852	0.9394	0.1185
18	Sidenreng Rappang	0.9405	0.0118	0.8959	0.2200
19	Sinjai	0.9393	0.0160	0.8821	0.2521
20	Soppeng	0.9423	0.0053	0.8395	0.3515
21	Takalar	0.6704	0.9878	0.8840	0.2477
22	Tana Toraja	0.6670	1.0000	0.9863	0.0093
23	Toraja Utara	0.8938	0.1805	0.9899	0.0007
24	Wajo	0.9438	0.0000	0.8960	0.2198



Lampiran 7. Hasil Analisis RWBP Model IGTWR dan RIGTWR Tahun 2021

No.	Kabupaten/Kota	Model IGTWR		Model RIGTWR	
		Nilai Kemiripan	Nilai Peluang	Nilai Kemiripan	Nilai Peluang
1	Bantaeng	0.7075	0.7065	0.9794	0.0267
2	Barru	0.8791	0.2830	0.6171	0.7954
3	Bone	0.9478	0.1135	0.8943	0.2073
4	Bulukumba	0.9466	0.1164	0.9831	0.0189
5	Enrekang	0.8319	0.3994	0.8437	0.3147
6	Gowa	0.9434	0.1243	0.9461	0.0974
7	Jeneponto	0.9446	0.1213	0.9920	0.0000
8	Kepulauan Selayar	0.9419	0.1278	0.9920	0.0000
9	Kota Makassar	0.9434	0.1243	0.9461	0.0974
10	Kota Palopo	0.5886	1.0000	0.5206	1.0000
11	Kota Parepare	0.8780	0.2857	0.8344	0.3343
12	Luwu	0.8332	0.3962	0.8495	0.3023
13	Luwu Timur	0.6180	0.9274	0.8363	0.3303
14	Luwu Utara	0.8825	0.2746	0.9076	0.1790
15	Maros	0.9439	0.1230	0.9322	0.1269
16	Pangkajene Dan Kepulauan	0.9937	0.0000	0.6705	0.6821
17	Pinrang	0.8784	0.2847	0.9116	0.1706
18	Sidenreng Rappang	0.5975	0.9779	0.5460	0.9462
29	Sinjai	0.9432	0.1246	0.9433	0.1034
20	Soppeng	0.8883	0.2602	0.8356	0.3318
21	Takalar	0.9377	0.1383	0.9368	0.1172
22	Tana Toraja	0.8686	0.3089	0.8500	0.3012
23	Toraja Utara	0.8704	0.3045	0.8367	0.3295
24	Wajo	0.6575	0.8299	0.8776	0.2428



Lampiran 8. Matrix Bobot Spasial

Bantaeng 2016	1.00000	0.19222	0.29437		0.00000	0.00000	0.00000
Barru 2016	0.19222	1.00000	0.46592		0.00000	0.00000	0.00000
Bone 2016	0.29437	0.46592	1.00000	...	0.00000	0.00000	0.00000
Bulukumba 2016	0.67942	0.18051	0.32324		0.00000	0.00000	0.00000
Enrekang 2016	0.04895	0.23477	0.15726		0.00000	0.00000	0.00000
⋮		⋮		⋮		⋮	
Bantaeng 2017	0.26507	0.00264	0.00610		0.00000	0.00000	0.00000
Barru 2017	0.00264	0.26507	0.01648		0.00000	0.00000	0.00000
Bone 2017	0.00610	0.01648	0.26507	...	0.00000	0.00000	0.00000
Bulukumba 2017	0.04298	0.00235	0.00740		0.00000	0.00000	0.00000
Enrekang 2017	0.00024	0.00388	0.00181		0.00000	0.00000	0.00000
⋮		⋮		⋮		⋮	
Bantaeng 2018	0.07026	0.00021	0.00056		0.00000	0.00000	0.00000
Barru 2018	0.00021	0.07026	0.00190		0.00000	0.00000	0.00000
Bone 2018	0.00056	0.00190	0.07026	...	0.00000	0.00000	0.00000
Bulukumba 2018	0.00629	0.00018	0.00071		0.00000	0.00000	0.00000
Enrekang 2018	0.00001	0.00033	0.00013		0.00000	0.00000	0.00000
⋮		⋮		⋮		⋮	
Bantaeng 2019	0.01862	0.00002	0.00007		0.00000	0.00000	0.00000
Barru 2019	0.00002	0.01862	0.00027		0.00000	0.00000	0.00000
Bone 2019	0.00007	0.00027	0.01862	...	0.00000	0.00000	0.00000
Bulukumba 2019	0.00106	0.00002	0.00009		0.00000	0.00000	0.00000
Enrekang 2019	0.00000	0.00004	0.00001		0.00000	0.00000	0.00000
⋮		⋮		⋮		⋮	
Bantaeng 2020	0.00494	0.00000	0.00001		0.00000	0.00000	0.00000
Barru 2020	0.00000	0.00494	0.00004		0.00000	0.00000	0.00000
Bone 2020	0.00001	0.00004	0.00494	...	0.00000	0.00000	0.00000
Bulukumba 2020	0.00019	0.00000	0.00001		0.00000	0.00000	0.00000
Enrekang 2020	0.00000	0.00000	0.00000		0.00000	0.00000	0.00000
⋮		⋮		⋮		⋮	
Soppeng 2021	0.00000	0.00005	0.00001		0.15145	0.11054	0.51753
Takalar 2021	0.00001	0.00000	0.00000		0.02982	0.02079	0.09353
Tana Toraja 2021	0.00000	0.00000	0.00000	...	1.00000	0.66349	0.21643
Tana Toraja 2021	0.00000	0.00000	0.00000		0.66349	1.00000	0.17235
Tana Toraja 2021	0.00000	0.00000	0.00000		0.21643	0.17235	1.00000



Lampiran 9. Matrix Bobot *Robust* Konvergen

Bantaeng 2016	0.99973	0.99192	0.98727		0.56590	0.67887	0.55451
Barru 2016	0.96944	0.99989	0.99816		0.72543	0.82253	0.97787
Bone 2016	0.96886	0.99982	0.99990	...	0.69355	0.79321	0.96666
Bulukumba 2016	0.99998	0.99698	0.99991		0.50966	0.60950	0.46670
Enrekang 2016	0.97187	0.59966	0.46433		0.96804	0.99964	0.99887
⋮		⋮		⋮		⋮	
Bantaeng 2017	0.80448	0.53602	0.21798		0.99711	0.97554	0.99206
Barru 2017	0.68481	0.30574	0.11567		0.99349	0.91600	0.93569
Bone 2017	0.69489	0.31829	0.26992	...	0.99933	0.95717	0.96950
Bulukumba 2017	0.74902	0.44056	0.25544		0.99899	0.97390	0.99357
Enrekang 2017	0.74964	0.41452	0.07151		0.98161	0.87511	0.88884
⋮		⋮		⋮		⋮	
Bantaeng 2018	0.71686	0.35780	0.32525		0.99873	0.98044	0.99397
Barru 2018	0.73346	0.34738	0.26296		0.99994	0.96190	0.96171
Bone 2018	0.73877	0.37186	0.28928	...	0.99992	0.96946	0.97636
Bulukumba 2018	0.69063	0.33969	0.37787		0.99967	0.98039	0.99780
Enrekang 2018	0.77883	0.43921	0.19398		0.99741	0.93841	0.94473
⋮		⋮		⋮		⋮	
Bantaeng 2019	0.89911	0.72394	0.68285		0.92959	0.98507	0.96363
Barru 2019	0.92729	0.69741	0.52542		0.95154	0.99885	0.99640
Bone 2019	0.96179	0.82508	0.57523	...	0.94036	0.99604	0.99994
Bulukumba 2019	0.90031	0.70991	0.73596		0.92613	0.98072	0.96784
Enrekang 2019	0.84884	0.64749	0.25376		0.99996	0.96139	0.99161
⋮		⋮		⋮		⋮	
Bantaeng 2020	0.71567	0.43170	0.38392		0.99978	0.98040	0.99981
Barru 2020	0.75392	0.42983	0.16728		0.99999	0.95559	0.98001
Bone 2020	0.73501	0.41886	0.19114	...	0.99972	0.96584	0.99346
Bulukumba 2020	0.68939	0.38309	0.41578		0.99998	0.98018	0.99996
Enrekang 2020	0.85718	0.63709	0.07411		0.99649	0.91391	0.94087
⋮		⋮		⋮		⋮	
Soppeng 2021	0.69475	0.36818	0.35269		0.99464	0.95126	0.98807
Takalar 2021	0.76698	0.38815	0.35063		0.99909	0.97836	0.97103
Tana Toraja 2021	0.64991	0.30352	0.56600	...	0.99627	0.97464	0.99947
Tana Toraja 2021	0.84858	0.81237	0.76034		0.99675	0.98779	0.94363
21	0.63059	0.30215	0.35587		0.98969	0.94420	0.99521



Lampiran 10. Hasil Estimasi Parameter Beta RIGTWR Tahun 2016

No.	Kabupaten/Kota	β_0	β_1	β_2	β_3	β_4	Variabel yang Signifikan
1	Bantaeng	0.040	-0.011	0.771	-0.835	1.595	X4
2	Barru	0.317	0.002	13.410	-1.456	0.244	X2X3
3	Bone	0.359	0.000	12.727	-1.132	0.274	X2
4	Bulukumba	0.022	-0.013	0.256	-0.474	1.664	X4
5	Enrekang	30.158	0.048	1.357	-1.420	0.358	-
6	Gowa	0.095	-0.007	2.521	-1.526	1.452	X4
7	Jeneponto	0.037	-0.009	0.792	-1.164	1.570	X4
8	Kepulauan Selayar	-0.206	-0.020	-6.693	0.756	2.125	X4
9	Kota Makassar	0.342	-0.001	12.173	-0.993	0.222	X2
10	Kota Palopo	278.001	0.147	-3.100	-5.656	-1.220	X1X3
11	Kota Parepare	0.030	-0.003	1.071	-1.394	1.316	X4
12	Luwu	-0.003	0.006	0.278	-2.898	1.498	X3X4
13	Luwu Timur	615.282	0.008	-	-6.560	-3.187	X1X2X3X4
14	Luwu Utara	384.384	0.016	-6.803	-7.348	-1.166	X3X4
15	Maros	0.375	0.000	13.924	-1.207	0.128	X2
16	Pangkajene Dan Kepulauan	0.387	0.003	16.063	-1.291	-0.104	X2
17	Pinrang	83.095	0.054	1.123	-1.430	-0.367	-
18	Sidenreng Rappang	-6.398	0.061	0.457	0.887	0.407	-
19	Sinjai	0.354	-0.004	10.414	-0.717	0.471	X2
20	Soppeng	0.274	0.000	11.557	-1.330	0.445	X2
21	Takalar	0.066	-0.007	1.717	-1.341	1.470	X4
22	Tana Toraja	0.042	0.012	3.241	-4.021	1.310	X1X3X4
23	Toraja Utara	204.175	0.170	0.045	-5.648	-0.827	X1X3
24	Wajo	0.017	-0.004	0.469	-0.781	1.177	X4



Lampiran 11. Hasil Estimasi Parameter Beta RIGTWR Tahun 2017

No.	Kabupaten/Kota	β_0	β_1	β_2	β_3	β_4	Variabel yang Signifikan
1	Bantaeng	0.058	0.004	2.046	-2.121	0.728	X4
2	Barru	0.027	0.005	1.918	-1.685	0.457	X4
3	Bone	0.030	0.002	1.434	-1.059	0.428	X4
4	Bulukumba	0.032	0.002	1.248	-1.549	0.661	X4
5	Enrekang	0.032	0.010	2.866	-2.540	0.455	X3X4
6	Gowa	0.031	0.002	1.157	-1.763	0.745	X4
7	Jeneponto	0.044	0.003	1.783	-1.922	0.684	X4
8	Kepulauan Selayar	-0.043	-0.001	-1.827	-1.218	0.932	X4
9	Kota Makassar	0.032	0.003	1.595	-1.839	0.656	X4
10	Kota Palopo	-0.600	0.041	1.152	-0.955	0.193	-
11	Kota Parepare	0.030	0.010	2.223	-2.617	0.600	X3X4
12	Luwu	0.018	0.008	1.542	-2.020	0.500	X3X4
13	Luwu Timur	-0.017	-0.001	-1.646	-0.850	0.768	X4
14	Luwu Utara	24.145	0.040	-0.295	-0.643	0.007	-
15	Maros	0.033	0.003	1.742	-1.838	0.643	X4
16	Pangkajene Dan Kepulauan	0.026	0.003	1.783	-1.656	0.534	X4
17	Pinrang	0.044	0.011	2.919	-2.474	0.398	X3X4
18	Sidenreng Rappang	0.028	0.008	2.140	-2.096	0.461	X3X4
19	Sinjai	0.039	0.003	1.542	-1.627	0.603	X4
20	Soppeng	0.028	0.005	1.877	-1.655	0.439	X4
21	Takalar	0.030	0.002	1.236	-2.031	0.798	X4
22	Tana Toraja	0.036	0.009	2.138	-2.038	0.425	X3X4
23	Toraja Utara	-10.052	0.046	1.716	-0.764	0.182	X1
24	Wajo	0.021	0.005	1.437	-1.549	0.466	X3X4



Lampiran 12. Hasil Estimasi Parameter Beta RIGTWR Tahun 2018

No.	Kabupaten/Kota	β_0	β_1	β_2	β_3	β_4	Variabel yang Signifikan
1	Bantaeng	0.034	0.002	0.974	-0.969	0.545	X4
2	Barru	0.049	0.005	2.104	-1.221	0.390	X4
3	Bone	0.053	0.004	1.768	-1.195	0.454	X4
4	Bulukumba	0.008	0.000	0.184	-0.687	0.565	X4
5	Enrekang	0.042	0.011	2.487	-1.934	0.462	X3X4
6	Gowa	0.025	0.002	0.789	-0.931	0.544	X4
7	Jeneponto	0.010	0.001	0.310	-0.783	0.558	X4
8	Kepulauan Selayar	-0.059	-0.003	-2.240	-0.126	0.685	X4
9	Kota Makassar	0.033	0.001	1.232	-0.888	0.478	X4
10	Kota Palopo	59.799	0.054	-0.680	-0.868	-0.253	X1
11	Kota Parepare	0.054	0.009	2.482	-1.922	0.494	X3X4
12	Luwu	0.021	0.010	1.190	-1.820	0.599	X3X4
13	Luwu Timur	116.108	0.048	-2.707	-0.906	-0.658	-
14	Luwu Utara	84.473	0.062	-2.251	-0.366	-0.506	X1
15	Maros	0.049	0.004	1.827	-1.270	0.513	X4
16	Pangkajene Dan Kepulauan	0.047	0.004	2.049	-1.179	0.432	X4
17	Pinrang	0.054	0.011	2.780	-1.887	0.376	X3X4
18	Sidenreng Rappang	0.048	0.010	2.531	-1.775	0.424	X3X4
19	Sinjai	0.026	0.002	0.702	-0.935	0.537	X4
20	Soppeng	0.048	0.006	2.072	-1.364	0.438	X4
21	Takalar	0.019	0.001	0.638	-0.918	0.560	X4
22	Tana Toraja	19.204	0.045	0.648	-0.767	0.065	X1
23	Toraja Utara	51.393	0.054	-0.371	-0.640	-0.249	X1
24	Wajo	0.045	0.008	2.149	-1.590	0.454	X3X4



Lampiran 13. Hasil Estimasi Parameter Beta RIGTWR Tahun 2019

No.	Kabupaten/Kota	β_0	β_1	β_2	β_3	β_4	Variabel yang Signifikan
1	Bantaeng	0.057	-0.002	1.176	-1.013	0.871	X4
2	Barru	0.144	0.005	4.724	-1.728	0.474	X3X4
3	Bone	0.194	0.005	4.859	-2.320	0.695	X3X4
4	Bulukumba	0.062	-0.003	1.366	-0.702	0.771	X4
5	Enrekang	0.022	0.010	1.510	-2.663	0.864	X1X3X4
6	Gowa	0.079	0.000	1.886	-1.678	0.936	X4
7	Jeneponto	-0.013	-0.003	-0.550	-1.088	1.053	X4
8	Kepulauan Selayar	-0.078	-0.012	-3.235	2.536	0.378	X4
9	Kota Makassar	0.132	0.000	3.585	-1.477	0.722	X3X4
10	Kota Palopo	33.675	0.063	-2.840	-0.399	0.187	X1
11	Kota Parepare	0.060	0.009	2.287	-2.815	0.933	X1X3X4
12	Luwu	33.431	0.069	-2.646	-0.323	0.153	X1
13	Luwu Timur	68.960	0.051	-4.761	-0.360	0.071	-
14	Luwu Utara	49.325	0.058	-3.633	-0.510	0.137	X1
15	Maros	0.188	0.003	5.073	-2.070	0.710	X3X4
16	Pangkajene Dan Kepulauan	0.178	0.004	6.004	-2.143	0.593	X2X3X4
17	Pinrang	0.043	0.013	2.321	-2.956	0.774	X1X3X4
18	Sidenreng Rappang	0.042	0.009	2.069	-2.158	0.713	X3X4
19	Sinjai	0.118	0.000	2.425	-1.516	0.837	X4
20	Soppeng	0.111	0.005	3.525	-2.116	0.722	X3X4
21	Takalar	0.049	-0.002	1.253	-1.065	0.838	X4
22	Tana Toraja	17.585	0.073	-1.683	-0.521	0.233	X1
23	Toraja Utara	26.911	0.070	-2.176	-0.413	0.161	X1
24	Wajo	0.018	0.004	0.590	-1.763	0.888	X3X4



Lampiran 14. Hasil Estimasi Parameter Beta RIGTWR Tahun 2020

No.	Kabupaten/Kota	β_0	β_1	β_2	β_3	β_4	Variabel yang Signifikan
1	Bantaeng	-0.009	0.000	-0.584	-0.972	0.754	X4
2	Barru	0.041	0.006	1.695	-1.898	0.640	X3X4
3	Bone	0.032	0.004	1.043	-1.703	0.711	X4
4	Bulukumba	-0.013	-0.001	-0.768	-0.667	0.686	X4
5	Enrekang	0.048	0.015	3.503	-3.679	0.765	X1X3X4
6	Gowa	-0.014	-0.001	-1.197	-1.085	0.896	X4
7	Jeneponto	-0.017	-0.001	-1.375	-0.958	0.857	X4
8	Kepulauan Selayar	-0.096	-0.002	-3.845	-0.744	0.985	X4
9	Kota Makassar	0.012	0.001	0.135	-1.454	0.828	X4
10	Kota Palopo	0.001	0.005	0.091	-1.427	0.533	X4
11	Kota Parepare	0.040	0.014	1.941	-3.562	0.955	X3X4
12	Luwu	0.011	0.009	0.632	-2.356	0.719	X3X4
13	Luwu Timur	-0.002	0.002	-0.671	-0.628	0.418	-
14	Luwu Utara	-0.016	0.001	-1.565	-0.520	0.477	X4
15	Maros	0.043	0.004	1.508	-2.074	0.838	X3X4
16	Pangkajene Dan Kepulauan	0.073	0.005	3.060	-1.961	0.614	X3X4
17	Pinrang	0.045	0.016	2.885	-3.534	0.753	X1X3X4
18	Sidenreng Rappang	0.037	0.013	2.298	-3.031	0.770	X3X4
19	Sinjai	0.012	0.001	0.129	-1.137	0.684	X4
20	Soppeng	0.038	0.007	1.531	-2.242	0.758	X3X4
21	Takalar	-0.012	-0.001	-1.105	-1.162	0.892	X4
22	Tana Toraja	0.026	0.010	1.431	-2.539	0.671	X3X4
23	Toraja Utara	0.005	0.005	0.402	-1.429	0.502	X4
24	Wajo	0.017	0.008	0.659	-2.272	0.832	X3X4



Lampiran 15. Hasil Estimasi Parameter Beta RIGTWR Tahun 2021

No.	Kabupaten/Kota	β_0	β_1	β_2	β_3	β_4	Variabel yang Signifikan
1	Bantaeng	0.073	0.006	2.570	-1.134	0.352	-
2	Barru	0.011	0.004	0.368	-0.797	0.446	X4
3	Bone	0.023	0.006	0.841	-1.272	0.526	X4
4	Bulukumba	0.058	0.006	2.373	-1.096	0.358	-
5	Enrekang	0.000	0.004	-0.334	-0.558	0.493	X4
6	Gowa	0.037	0.004	1.537	-0.863	0.436	-
7	Jeneponto	0.052	0.005	2.304	-1.002	0.354	-
8	Kepulauan Selayar	0.053	0.006	1.607	-1.082	0.424	-
9	Kota Makassar	0.040	0.005	1.725	-1.182	0.448	-
10	Kota Palopo	-0.073	0.005	-8.250	-1.688	1.855	X2X3X4
11	Kota Parepare	-0.006	0.005	-0.801	-1.024	0.628	X4
12	Luwu	-0.028	0.001	-2.645	-0.118	0.633	X4
13	Luwu Timur	-82.738	0.152	-6.780	-0.547	1.970	X1
14	Luwu Utara	-0.055	0.158	-6.843	-0.339	1.046	X1
15	Maros	0.043	0.007	1.749	-1.610	0.560	X4
16	Pangkajene Dan Kepulauan	0.035	0.006	1.551	-1.206	0.453	X4
17	Pinrang	-0.001	0.004	-0.329	-0.406	0.405	X4
18	Sidenreng Rappang	-0.009	0.003	-1.155	-0.506	0.556	X4
19	Sinjai	0.054	0.006	2.115	-1.163	0.379	-
20	Soppeng	0.002	0.004	-0.270	-0.883	0.559	X4
21	Takalar	0.053	0.005	2.343	-1.049	0.356	-
22	Tana Toraja	-0.023	0.001	-1.841	0.268	0.494	X4
23	Toraja Utara	-0.085	0.001	-8.555	-0.951	1.763	X2X4
24	Wajo	-0.013	0.002	-1.468	-0.571	0.618	X4



Lampiran 16. Perbandingan Nilai DBD Aktual dengan Hasil Prediksi Model IGTWR dan RIGTWR Tahun 2016 – 2021

