

DAFTAR PUSTAKA

1. Abdoel TH, Rob Pastoor, Henk L. Smits, Mochammad Hatta, 2007. Laboratory evaluation of a simple and rapid latex agglutination assay for the serodiagnosis of typhoid fever. *Transactions of the Royal Society of Tropical Medicine and Hygiene*. 101 (10); 1032-1038.
2. Abdoel, T. H., Rob Pastoor, Henk L. Smits, Mochammad Hatta. (2007). Laboratory evaluation of a simple and rapid latex agglutination assay for the serodiagnosis of typhoid fever. *Transactions of the Royal Society of Tropical Medicine and Hygiene*. 101 (10); 1032-1038.
3. Alba, S., Mirjam, I. B., Mochammad, H., Pauline, F. D. S., Ressay, D., Romi, U., Andi R. S., Muhammad, S., Nataniel, T., Masyhudi, A., Yadi, Y., Rob, P., Stella, V. B., Henk, L. S. (2016). Risk factors of typhoid infection in the Indonesian archipelago. *PLOS One*. 9;11(6):e0155286. doi: 10.1371/journal.pone.015528
4. Aldridge, P. (2002). Regulation of flagellar assembly. *Current Opinion in Microbiology*, 5(2):160–165.
5. Baker S, Michael Favorov, Gordon Dougan. (2010). Searching for the elusive typhoid diagnostic. *BMC Infectious Diseases*. 10:45
6. Baker, S., Holt, K., Whitehead, S., Goodhead, I., Perkins, T., Stocker, B., H, J., Dougan G. 2007. A linear plasmid truncation induces unidirectional flagellar phase change in H:z66 positive *Salmonella typhi*. *Mol Microbiol*. 6 (5):1207-18.

R, (1968). *Medical Microbiology: A Guide to the Laboratory Diagnosis and Infection*, Edinburgh: E & S Livingstone Ltd.



8. Di Domenico, E. G., Cavallo, I., Pontone, M., Toma, L., Ensoli, F. (2017). Biofilm Producing Salmonella Typhi: Chronic Colonization and Development of Gallbladder Cancer. *Int. J. Mol. Sci.*, 18(9), [1887], hal 1-14; doi:10.3390/ijms18091887
9. Dwiyantri, R., Mochammad Hatta, Rosdiana Natzir, Sutji Pratiwi, Muhammad Sabir, Yadi Yasir, Rizki Amelia Noviyanthi, Ade Rifka Junita, Nataniel Tandirogang, Masyhudi Amir, Matius Fias, Juhri Saning, Burhanuddin Bahar.(2017). Association of Typhoid Fever Severity with Polymorphisms NOD2, VDR and NRAMP1 Genes in Endemic Area, Indonesia. *J. Med. Sci.*, 17 (3): 133-139. July-September, DOI: 10.3923/jms.2017.133.139
10. Dwiyantri, R., Rizki, A. N., Rosdiana, N., Muhammad, S., Yadi, Y., Ade, R. J., Nataniel, T., Masyhudi, A., Mochammad, H. (2017). The relationship polymorphisms gene NOD2 and titier antibody to Lipopolysachatrudin Typhoid fever. Annual Scientific Meeting (ASM) PAMKI 2017, page 22, Padang, 12-14 October 2017.
11. Dwiyantri, R., Yadi Yasir, Muhammad Sabir, Rosdiana Natzir, Sutji Pratiwi Rahardjo, Nur Indah Purnamasari, Juhri Saning, Mochammad Hatta. (2015). Titer IgG anti-flagellum Antibody and Flagellin Gene Variants of Salmonella enterica Serovar Typhi as Risk Factor for Typhoid Fever Carriers. *American Journal of Infectious Diseases and Microbiology*, Vol. 3, No. 2, 65-69. DOI:10.12691/ajidm-3-2-1
12. Easmon C. (26 Mei 2015). Typhoid fever and paratyphoid fever. Find out what causes typhoid fever and paratyphoid fever and how it's spread? Diakses 12 Desember 2017. Available from: <http://www.netdoctor.co.uk/conditions/infections/a5690/typhoid-fever-and-paratyphoid-fever/>

mammad Hatta, Andi Asadul Islam, Rahmawati Minhajat, Maryunis Maryunis.
 tion Salmonella Typhi RNA from Suspect Typhoid using Reverse Transcription



- Polymerase Chain Reaction. International Journal of Sciences: Basic and Applied Research (IJSBAR) Volume 31, No 2, pp 99-107

14. Georges-Fernand Widal. Available from: http://en.wikipedia.org/wiki/Georges-Fernand_Widal. [Download 10 Oktober 2017.]
15. Grossman, D. A., Witham, N. D., Burr, G. K., Schoolnik, and J. Parsonett. (1995). Flagellar Serotypes of Salmonella Typhi in Indonesia: Relationships among Motility, Invasiveness. And Clinical Illness, The Journal of Infectious Disease. 171:6 : 212-216.
16. Gunn, J. S., Joanna M. Marshall, Stephen Baker, Sabina Dongol, Richelle C. Charles, Edward T. Ryan. (2014). Salmonella chronic carriage: epidemiology, diagnosis and gallbladder persistence. Trends Microbiol. November ; 22(11): 648–655. doi:10.1016/j.tim.2014.06.007.
17. Hatta, M., A. R. Sultan, Ressay Dwiyantri, Muhammad Sabir, Musjaya Gali, Nataniel Tandirogang, Yadi Yasir, Masyhudi Amir, Nur Indah Purnamasari, Henk L Smits.(2013). Utility of serological test on diagnostic of typhoid fever. DAAD Summer School Program IGHEP (Indonesia Germany Health Education Partnership). Samarinda dan Bali, 17-27 November 2013. Samarinda dan Bali, 17-27 November 2013.
18. Hatta, M., and Henk L Smits. (2007). Detection of Salmonella typhi by nested Polymerase Chain Reaction in blood, urine and stool samples. American J. Tropical Medicine Hygiene.vol : 76 : hal 139-143.
19. Hatta, M., Andi R. Sultan, Ressay Dwiyantri, Muhammad Sabir, Musjaya Gali, Nataniel Tandirogang, Yadi Yasir, Masyhudi Amir, Nur Indah Purnamasari, Henk L. (2013). Association of Severe Typhoid with Salmonella Enterica Serovar Typhi Genotypes Second Flagellin Gene. DAAD Summer School Program IGHEP (Indonesia Health Education Partnership). Samarinda dan Bali, 17-27 November 2013.



20. Hatta, M., Henk, L. S. (2010). Diversity flagella variants and MDR of *S. enterica* serovar Typhi in Indonesia archipelago. Conference “Bacterial Waterborne and Emerging Infectious Diseases in North Africa and Middle East : Opportunity for Collaboration”. Department of Health and Human Service, National Institute of Allergy and Infectious Diseases, National Institute of Health (NIH), USA. Rabat, Morocco, June 28-July 1, hal 23.
21. Hatta, M., Marga D.A Goris, Evy Heerkens, George C Gussenhoven, Jairo Goosken, Henk L Smits. (2002). Simple dipstick assay for the detection of *Salmonella typhi* - specific immunoglobulin M antibodies and the evolution of the immune response in patients with typhoid fever *American J. Tropical Medicine and Hygiene*. vol 66, no,4, hal 416-421.
22. Hatta, M., Mirjam Baker, Stella van Beer, Theresia H Abdoel, Henk L Smits. (2009). Risk factors for clinical typhoid fever in villages in Rural South Sulawesi, Indonesia. *International Journal of Tropical Medicine*. Vol 4 (3): 91-99
23. Hatta, M., Mubin Halim, Theresia Abdoel, Henk L. Smits. (2002). Antibody response in typhoid fever in endemic Indonesia and relevance of serology and culture to diagnosis. *Southeast Asian Journal of Tropical Medicine and Public Health*. vol 33 no, 4, hal 182-191
24. Hatta, M., Ratnawati. (2008). Enteric fever in endemic areas of Indonesia: an increasing problem of resistance. *J. Infection Developing Countries (JIDC)*, Vol 2(4); 298-301.
25. Hatta, M., Sultan, A. R., Pastoor R, Smits H. L. (2011). New Flagellin Gene for *Salmonella enterica* subspecies *enterica* serovar Typhi from the East Indonesian Archipelago. *American Journal Tropical Medicine & Hygiene*, Vol 84: 429-434.
26. Huang X, Phung, L. V., Dejsirilert, S., Tishyadhigama P., Li, Y., Liu, H., Hirose, K., Z., Ezaki, T. (2004). Cloning and characterization of the gene encoding the z66 *Salmonella enterica* serovar .Typhi. *FEMS Microbiology Letters* 234: 239–246



27. Jawetz, Melnick, Adelberg's. (2005). Medical Microbiology. The McGraw-Hill Companies, Inc.: United States of America.
28. Kidgell C., Reichard U., Wain J., Linz B., Torpdahl M., Dougan G. and Achtman M. 2002. *Salmonella typhi*, the causative agent of typhoid fever, is approximately 50,000 years old. *Infection, Genetics and Evolution*. 2(1): 39–45,
29. Kilger, G., Patrick A.D. (1993). Differentiation of *Salmonella* Phase 1 Flagellar Antigen Types by Restriction of The Amplified *fliC* Gene. *Journal of Clinical Microbiology*. 31: 5; 1108-1110.
30. Mangarengi, Y., Ressay Dwiyantri, Nataniel Tandirogang, Muhammad Sabir, Rosdiana Natzir, Mochammad Hatta, Yadi. (2015). Evaluation of Dri-Dot OMPs *Salmonella Typhi* in Suspected Typhoid Fever Patients as an Immunodiagnostic Kit. *American Journal of Biomedical and Life Sciences*. 3(4): 87-90. Published online August 11, 2015 (<http://www.sciencepublishinggroup.com/j/ajbls>) .doi: 10.11648/j.ajbls.20150304.14
31. Mastroeni, P., Menager, N. (2003). Development of acquired immunity to *Salmonella*. *Journal of Medical Microbiology*, (Online), Vol. 52,
32. Muthiadin, C., Hartina, St Aisyah S, Muhammad Khalifah Mustami, Isna Rasdianah Aziz, Mochammad Hatta. (2017). Immunoreactivity of 36 kDa Outer Membrane Protein (OMP) Antigen *Salmonella enterica* serovar Typhi as Candidate immunodiagnostic of Typhoid Fever. 5th National and International Conference - "Research to Serve Society" - Huachiew Chalermprakiet University. Huachiew Chalermprakiet University, Bangphli District, Samutprakarn, Thailand, 26 May 2017 page: 88-94



C., Rosdiana Natsir,, Rosana Agus, Muhammad Nasrum, Ressay Dwiyantri, Sabir, Yadi Yasir, Mochammad Hatta. (2015). Identification and

Characterization of Antigenic 36 Kda Outer Membrane Protein (OMP) of Salmonella enterica serovar Typhi (S.typhi) from Makassar, South Sulawesi, Indonesia. American Journal of Biomedical Research, vol. 3, No. 1, 9-12. online at <http://pubs.sciepub.com/ajbr/3/1/3>. DOI:10.12691/ajbr-3-1-3.

34. Ryan, K.J., Ray, C.G. (2004). Sherris Medical Microbiology: An Introduction to Infectious Diseases. 4th Edition. The McGraw-Hill Companies, Inc.: United States of America.
35. Sabir, M., Ressay Dwiyantri, Andini Febrianty, Nataniel Tandirogang, Yadi Yasir, Masyhudi Amir, Andi R Sultan, Nur Indah Purnamasari, Muhammad Reza Primaguna, Munawir Muhammad, Mochammad Hatta. (2014). Relationships between Flagellin Genes Variants of Salmonella enterica Serovar Typhi and Severity of Illness from Acute and Carriers State of Typhoid Fever. American Journal of Infectious Diseases and Microbiology, Vol. 2, No. 4, 74-80. DOI: 10.12691/ajidm-2-4-1.
36. Samajpati, S., Surojit Das, Ujjwayini Ray, Shanta Dutta. (2018). Report of Relapse Typhoid Fever Cases from Kolkata, India: Recrudescence or Reinfection?. Jpn. J. Infect. Dis., 71, 209–213.
37. Schreiber, F., Kay, S., Frankel, G., Simon C., David G., Esther van de Vosse, Jaap T. van Dissel, Richard Strugnell, Guy Thwaites, Robert A. Kingsley, Gordon Dougan, Stephen Baker. (2015). The Hd, Hj, and Hz66 flagella variants of Salmonella enterica serovar Typhi modify host responses and cellular interactions. Sci Rep. ; 5: 7947. Published online 2015 Jan 22. doi: 10.1038/srep07947. PMID: PMC4302301
38. Silva T M (2012). Classical Labeling of Bacterial Pathogens According to Their Lifestyle

inconsistencies and Alternatives. Front Microbiol ; 3: 71. Published online 2012
doi: 10.3389/fmicb.2012.00071. PMID: PMC3289908.



39. Susanna, L., Patrick, W., Clair, C., Wai-Lan, W., Gibson, W., Kwok-Yung, Y. (2005). Typhoid fever associated with acute appendicitis caused by an H1-j strain of *Salmonella enterica* serotype Typhi. *Journal of clinical microbiology*, 43(3) : 1470-2.
40. Tan, S. Y., Katy L. (2012). George Fernand Widal (1862-1929) : Serologist and clinician-scientist. *Singapore Med J* ; 53(5) : 297-298.
41. Tandirogang, N., Yadi Yasir, M. Sabir, Masyhudi Amir, Mochammad Hatta. (2015). Distribution Flagellin Gene Variants of Salmonella Typhi in Patients with Typhoid Fever in West Kutai, East Kalimantan, Indonesia. *American Journal of Biomedical and Life Sciences*, 3(5): 98-103. doi: 10.11648/j.ajbls.20150305.12. Published online October 12, available from: <http://www.sciencepublishinggroup.com/j/ajbls>
42. Wain, J., Hosoglu, S. (2008). The Laboratory Diagnosis of Enteric Fever. *J Infect Developing Countries*, Vol. 2. No. 6:421-425.
43. WHO. (2008). Weekly epidemiological record. Typhoid vaccines: WHO position paper, No. 6, 2008, 83, 49–60. Available from: <http://www.who.int/wer>
44. Xu, S., Zhang, H., Sheng, X., Xu, H., Huang, X. 2008. Transcriptional Expression Of FljB:Z66, A Flagellin Gene Located On A Novel Linear Plasmid Of *Salmonella enterica* Serovar Typhi Under Environmental Stresses. *The New Microbiologica*. 31 :2; 241-247.
45. Zabriskie, J. B. (2009). *Essential Clinical Immunology*. Cambridge University Press: New York.
46. Zabriskie, J.B. (2009). *Essential Clinical Immunology*. Cambridge University Press: New York

Jeza, V.T., Pan, Q. (2008). *Salmonella Typhi: from a Human Pathogen to a*
or. Cellular & Molecular Immunology. Vol. 5, No. 2: 91 – 97.



Lampiran 1. Urutan nukleotida dan asam amino dari gen z66Ind pada gene bank

Salmonella enterica subsp. enterica serovar Typhi strain z66Ind plasmid flagellin gene, complete cds

GenBank: HQ645960.1

LOCUS HQ645960

1044 bp DNA linear BCT 01-JAN-2011

DEFINITION Salmonella enterica subsp. enterica serovar Typhi strain z66Ind

plasmid flagellin gene, complete cds.

ACCESSION HQ645960

VERSION HQ645960.1 GI:313755744

KEYWORDS .

SOURCE Salmonella enterica subsp. enterica serovar Typhi (Salmonella typhi)

ORGANISM Salmonella enterica subsp. enterica serovar Typhi

Bacteria; Proteobacteria; Gammaproteobacteria; Enterobacteriales; Enterobacteriaceae; Salmonella.

REFERENCE 1 (bases 1 to 1044)

AUTHORS: Hatta,M., Sultan,A.R. and Pastoor,R., Henk L Smits

TITLE: New Flagellin Gene for Salmonella enterica serovar Typhi from The East Indonesian Archipelago

JOURNAL: Am. J. Trop. Med. Hyg (2011) vol 84: 429-434 .



bases 1 to 1044)

bmission

tted (22-NOV-2010) KIT Biomedical Research, Royal Tropical

Institute, Meibergdreef 39, Amsterdam 1105 AZ, The Netherlands

FEATURES Location/Qualifiers

source 1..1044

/organism="Salmonella enterica subsp. enterica serovar

Typhi"

/mol_type="genomic DNA"

/strain="T503"

/serovar="Typhi"

/sub_species="enterica"

/db_xref="taxon:90370"

/plasmid="unnamed"

/PCR_primers="fwd_seq: atggcacaagtcacatcaatac, rev_seq:

ttaacgcagcagagacagtac"

CDS

1..1044

/note="ind"

/codon_start=1



7819.1"

/db_xref="GI:313755745"

/translation="MAQVINTNSLSLLTQNNLNKSQSSLGTAIERLSSGLRINSAKDD

AAGQAISNRFTANIKGLTQASRNANDGISLAQTTEGALNEVNDNLQNIRRLTVQAQNGSNSSSDL
KSIQDEITQRMSEINRISEQTDFNGVKVLSSDQKLTIQVGANDGETIDIDLQKIDSTKLGLDGFVDT
KKGPKLGA EVTGT VKVGD KDLTV DAMAAGKKL FSGKDATGKDTFYVETTDKGVKTYKEATIA
EDGTTGKAKITEGTTDVKMADPLATLDKALSQVDGLRSSLGAVQNRFD SVINNLNSTVNNLSAS
QSRIQDADYATEVSNMSRANILQQAGTSVLAQANQTTQNVLSLLR"

ORIGIN

1 atggcacaag tcattaatac aaacagcctg tcgctgttga cccagaataa cctgaacaaa

61 tctcagctct ctctgggcac tgcgattgag cgtctgtctt ccggtctgcg tatcaacagc

121 gcgaaagacg atgctgcggg tcaggcgatc tccaaccggt tcaccgctaa catcaaaggc

181 ctgactcagg ctccccgaa cgccaacgac ggtatctctc tggcgcagac cactgaaggc

241 gcactgaacg aagttaacga caacctgcag aacatccgtc gtctgaccgt acaggcgcag

301 aacgggtcca actctccag cgacctgaaa tccatccagg acgaaatcac tcagcgcag

361 tcggaaatca accgatatc cgaacaaact gactcaacg gcgtgaaagt gctgagcagc

421 gatcagaagc tgaccatcca ggttggcgct aacgacgggt aaaccatcga tatcgacctg

481 cagaaaatcg actccactaa actgggtctg gatggcttcg acgtgaccaa aaaagtcct

541 aaactgggtg cagaagtac cggtagcgta aaagttgggt ataaagatct gactgttgac

gtaaaaa gctgttctcc ggtaaagatg ctactggcaa agataccttc

cgataa aggtgttaa acttataaag aagcaactat tgctgaagac

aaagaaa aatcaccgaa ggcactactg acgttaagat ggcagatccg



781 ctggctacc ttgacaaagc actgtctcag gttgacggcc tgcgttcttc cctgggtgcg

841 gtacagaacc gtttcgattc tgtgatcaac aacctgaaca gcaccgttaa caacctgtcc

901 gcttctcagt cccgtatcca ggatgctgac tacgcgaccg aagtgccaa catgagccgt

961 gccaacatcc tgcaacaggc tggcacctct gttctggcac aggctaacca gaccacgcag

1021 aacgtactgt ctctgctgcg ttaa //

Posisi pada kromosom

FliC F: 2011173 -- **FliC R:** 2012674 and **AroC F:** 2450480 -- **AroC R:** 2449674
z66 dan **z66IND** terdapat pada plasmid



Optimization Software:
www.balesio.com

Lampiran 2. Kuestioner penderita Demam Tifoid Akut Rekuren (DTAR)

CASE RECORD FORM

ID Pasien

1. Age	<input type="text"/> Years	2. Sex	<input type="text"/> 1=Male 2=Female
3. Temperature	<input type="text"/> °C	4. Duration of illness	<input type="text"/> days
5. Malaise	<input type="text"/> 1=Yes 2=No	6. Lidah Kotor	<input type="text"/> 1=Yes 2=No
7. Sakit Kepala	<input type="text"/> 1=Yes 2=No	8. Nafsu makan turun	<input type="text"/> 1=Yes 2=No
9. Bradikardi	<input type="text"/> 1=Yes 2=No	10. Muntah	<input type="text"/> 1=Yes 2=No
12. Nyeri Otot	<input type="text"/> 1=Yes 2=No	13. Apati	<input type="text"/> 1=Yes 2=No
14. Stufor	<input type="text"/> 1=Yes 2=No	15. Koma	<input type="text"/> 1=Yes 2=No
16. Konstipation	<input type="text"/> 1=Yes 2=No	17. Abdominal distention	<input type="text"/> 1=Yes 2=No
18. Diare	<input type="text"/> 1=Yes 2=No	19. Sakit perut	<input type="text"/> 1=Yes 2=No
20. Melena	<input type="text"/> 1=Yes 2=No	21. Septisemia	<input type="text"/> 1=Yes 2=No
22. Perforasi	<input type="text"/> 1=Yes 2=No	23. Hepatomegali	<input type="text"/> 1=Yes 2=No
24. Splenomegali	<input type="text"/> 1=Yes 2=No	25. Ikterus	<input type="text"/> 1=Yes 2=No

26. Widal Titer 1=<160 2=320-640 3=>640

27. No Sampel

28. Hasil FliC
1=Hd+ 2= Hj+
3= Hd+z66+ 4=Hj+z66+
5=Hd+ z66Ind+ 6= Hj+ z66Ind+



Lampiran 3. Data penderita Demam Tifoid akut Rekuren (DTAR); n=34

Waktu	IDPasien	1.Umur	2.Sex	3.Suhu	4.Lama	5.Malaise	6.Lidah	7.Kepala	8.Makan	9.Bradikardi	10.Muntah	11.Konstipasi	12.Splenomegali
9	SDT001	23	2	38	6	1	1	1	1	1	2	2	
12	SDT002	13	2	37.8	5	1	1	1	1	1	2	2	
34	SDT003	16	1	38	6	1	1	1	1	2	2	2	
24	SDT004	27	2	39	5	1	1	1	1	1	2	2	
21	SDT005	17	1	39	7	1	1	1	1	2	2	2	
8	SDT006	17	1	38.5	5	1	1	1	1	2	2	2	
37	SDT007	18	2	37.8	6	1	1	1	2	2	2	2	
16	SDT008	12	1	38	5	1	1	1	1	2	2	2	
20	SDT009	14	2	38.5	5	1	1	1	1	1	2	2	
15	SDT010	31	2	39	8	1	1	1	1	2	2	2	
7	SDT011	26	2	38	5	1	1	1	2	1	2	2	
22	SDT012	14	1	38	7	1	1	1	1	1	2	2	
33	SDT013	21	1	37.8	5	1	1	2	1	2	2	2	
49	SDT014	17	1	38	5	1	1	1	1	1	2	2	
35	SDT015	9	2	37.8	6	1	1	1	1	2	2	2	
14	SDT016	10	2	39	5	1	1	1	1	1	2	2	
27	SDT017	24	1	38	7	1	1	1	1	2	2	2	
20	SDT018	24	2	39	5	1	1	1	1	2	2	2	
29	SDT019	28	1	38.5	6	1	1	1	1	1	2	2	
12	SDT020	48	2	38.5	5	1	1	1	1	1	2	2	
21	SDT021	42	1	37.8	7	1	1	1	2	2	2	2	
14	SDT022	40	2	38.5	5	1	1	1	1	1	2	2	
31	SDT023	17	1	38	5	1	1	1	1	2	2	2	
16	SDT024	18	1	39	6	1	1	1	1	1	2	2	
8	SDT025	17	2	38.5	5	1	1	1	1	1	2	2	
10	SDT026	15	2	37.8	7	1	1	1	1	2	2	2	
24	SDT027	18	2	38	5	1	1	1	1	1	2	2	
17	SDT028	9	1	38.7	10	1	1	1	1	1	2	2	
11	SDT029	31	2	38.5	5	1	1	1	1	2	2	2	
8	SDT030	14	2	38	6	1	1	1	2	2	2	2	
28	SDT031	11	1	38	5	1	2	1	1	2	2	2	
15	SDT032	18	2	38.5	5	1	1	1	1	2	2	2	
19	SDT033	20	1	37.8	5	1	1	1	1	2	2	2	
30	SDT034	22	1	38	7	1	1	1	1	1	2	2	

11.Konstipasi	17.Distensi	18.Diare	19.Perut	20.Melena	21.Septisemia	22.Perforasi	23.Hepatomegali	24.Splenomegali
2	2	2	2	2	2	2	2	2
2	2	2	2	2	2	2	2	2
2	1	2	2	2	2	2	2	2
2	2	2	2	2	2	2	2	2
2	2	1	2	2	2	2	2	2

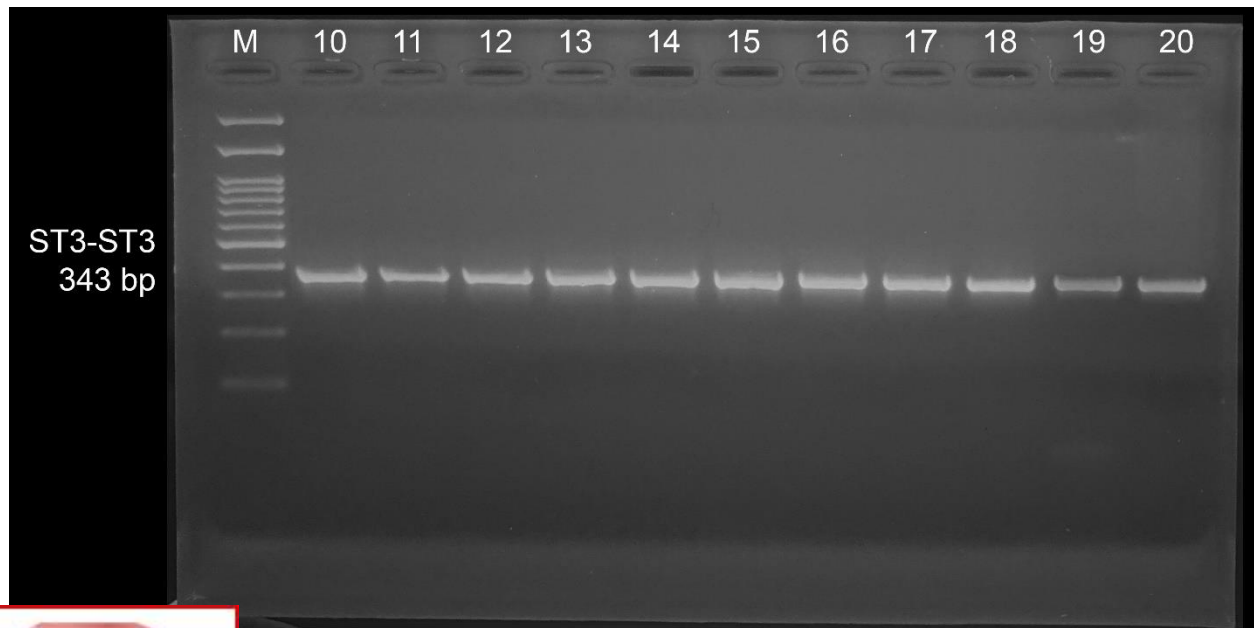
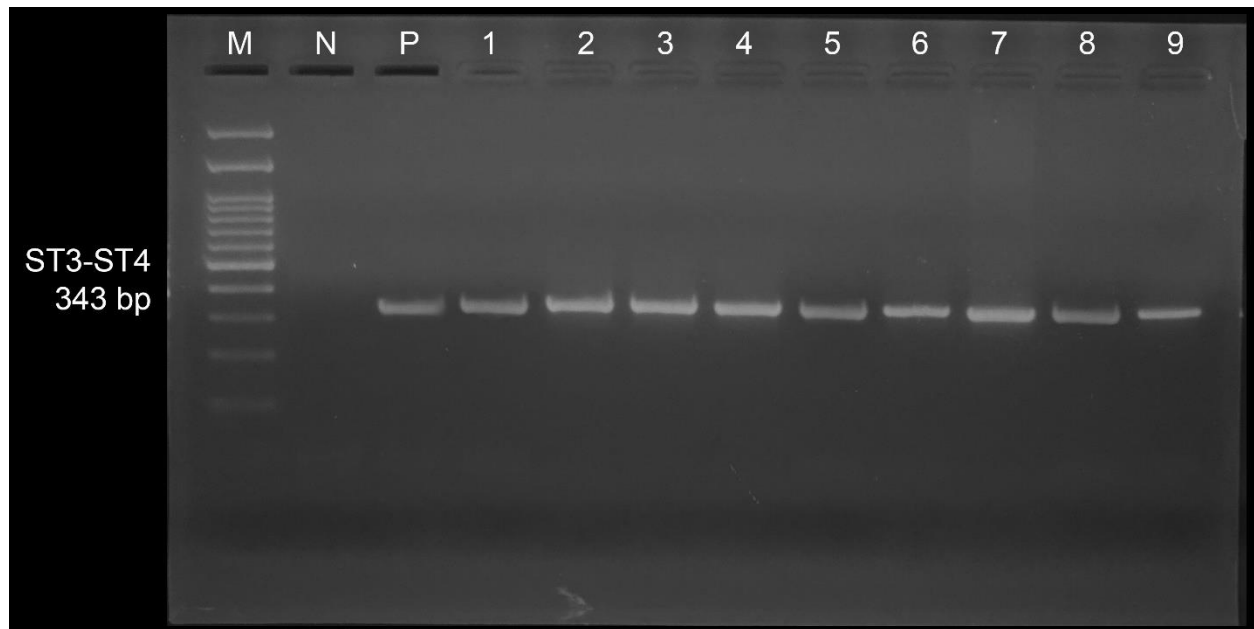


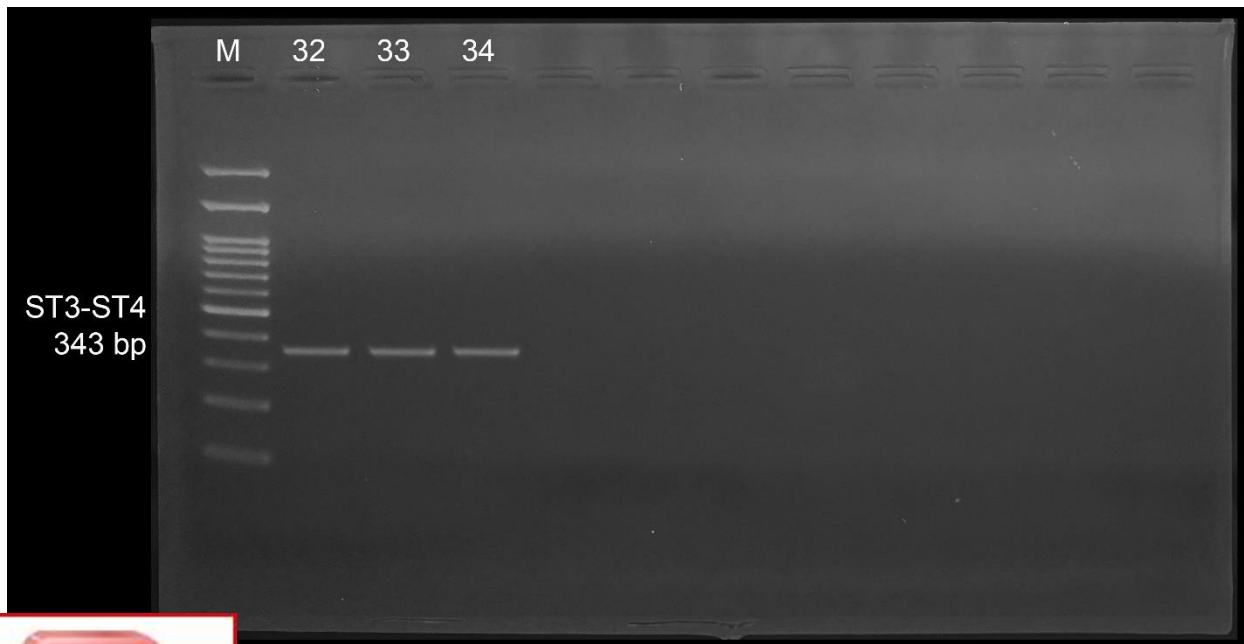
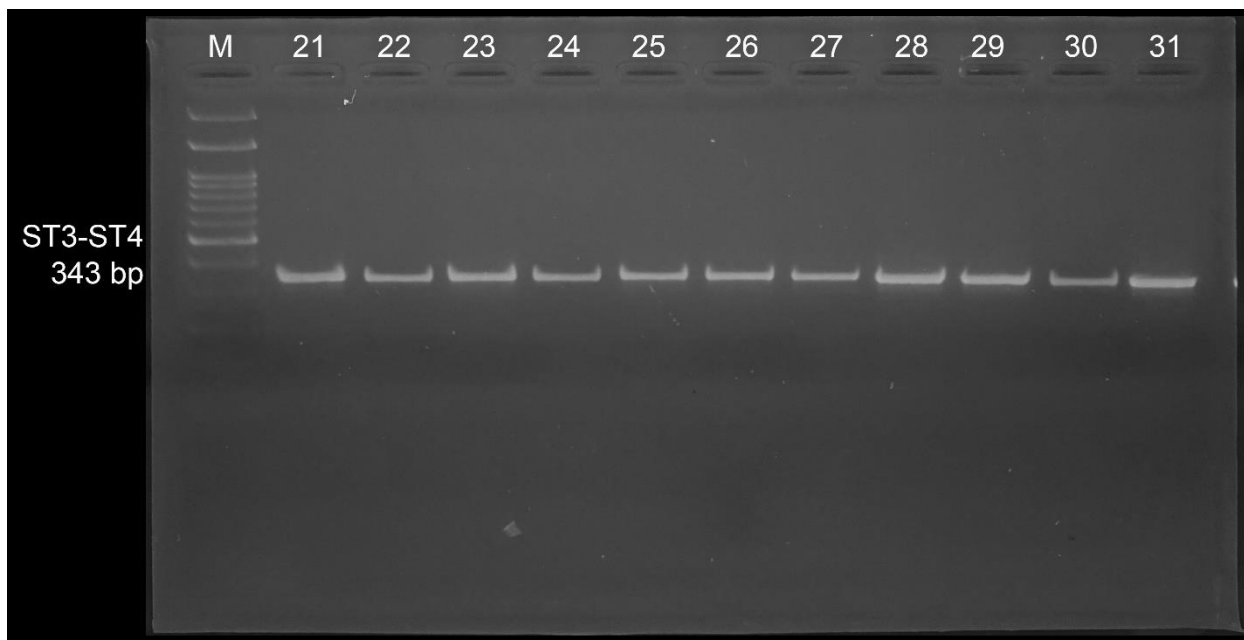
Optimization Software:
www.balesio.com

6	SDT006	2	2	2	2	2	2	2	2
7	SDT007	2	2	2	2	2	2	2	2
8	SDT008	2	2	2	2	2	2	2	2
9	SDT009	1	2	2	2	2	2	2	2
10	SDT010	2	2	2	2	1	1	1	2
11	SDT011	2	2	2	2	2	2	2	2
12	SDT012	2	2	2	2	2	2	2	2
13	SDT013	2	2	2	2	2	2	2	2
14	SDT014	2	2	2	2	2	2	2	2
15	SDT015	2	2	2	2	2	2	2	2
16	SDT016	2	2	2	2	2	2	2	2
17	SDT017	2	2	2	2	2	2	2	2
18	SDT018	1	2	2	1	2	2	2	2
19	SDT019	2	2	2	2	2	2	2	2
20	SDT020	2	2	2	2	2	2	2	2
21	SDT021	2	2	2	2	2	2	2	2
22	SDT022	2	2	2	2	2	2	2	2
23	SDT023	2	2	2	2	2	2	2	2
24	SDT024	2	2	2	2	2	2	2	2
25	SDT025	2	2	1	1	2	2	2	2
26	SDT026	2	2	2	2	2	2	2	2
27	SDT027	2	2	2	2	2	2	2	2
28	SDT028	2	2	2	2	2	2	2	2
29	SDT029	2	2	2	2	2	2	2	2
30	SDT030	2	2	2	2	2	2	2	2
31	SDT031	2	2	2	2	2	2	2	2
32	SDT032	1	2	2	2	2	2	2	2
33	SDT033	2	2	2	2	2	2	2	2
34	SDT034	2	2	2	2	2	2	2	2

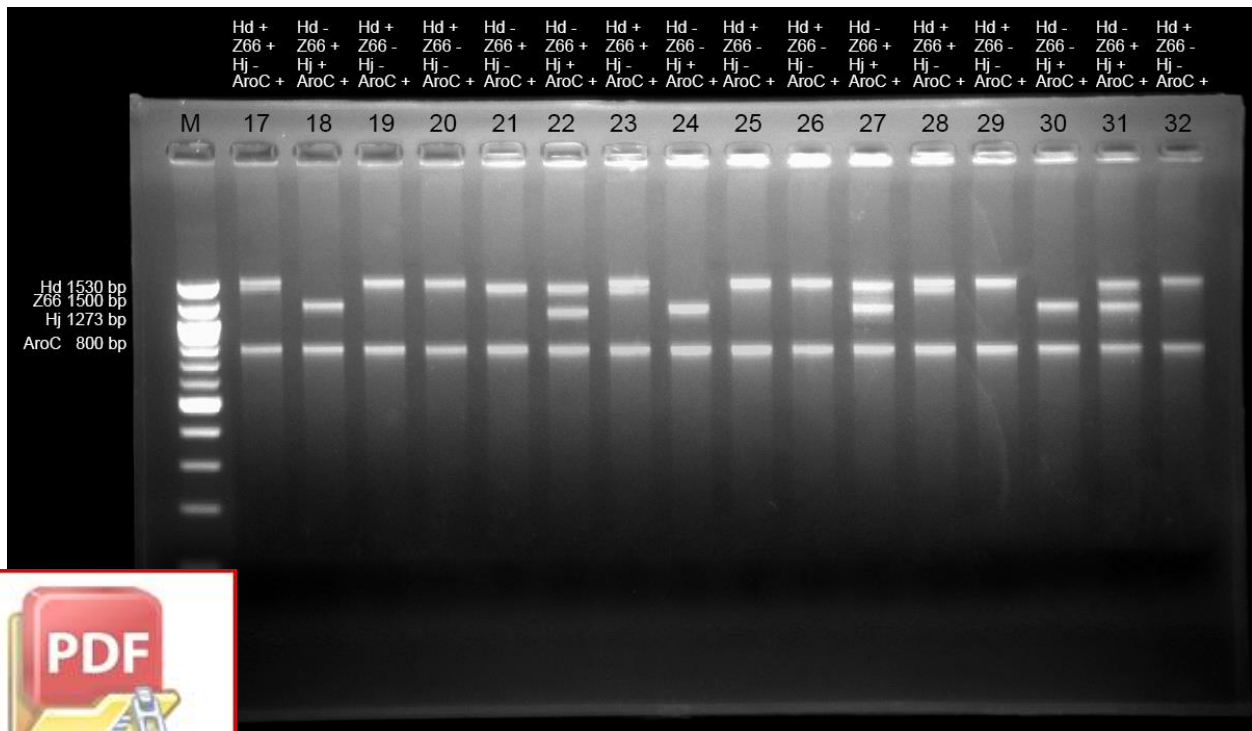
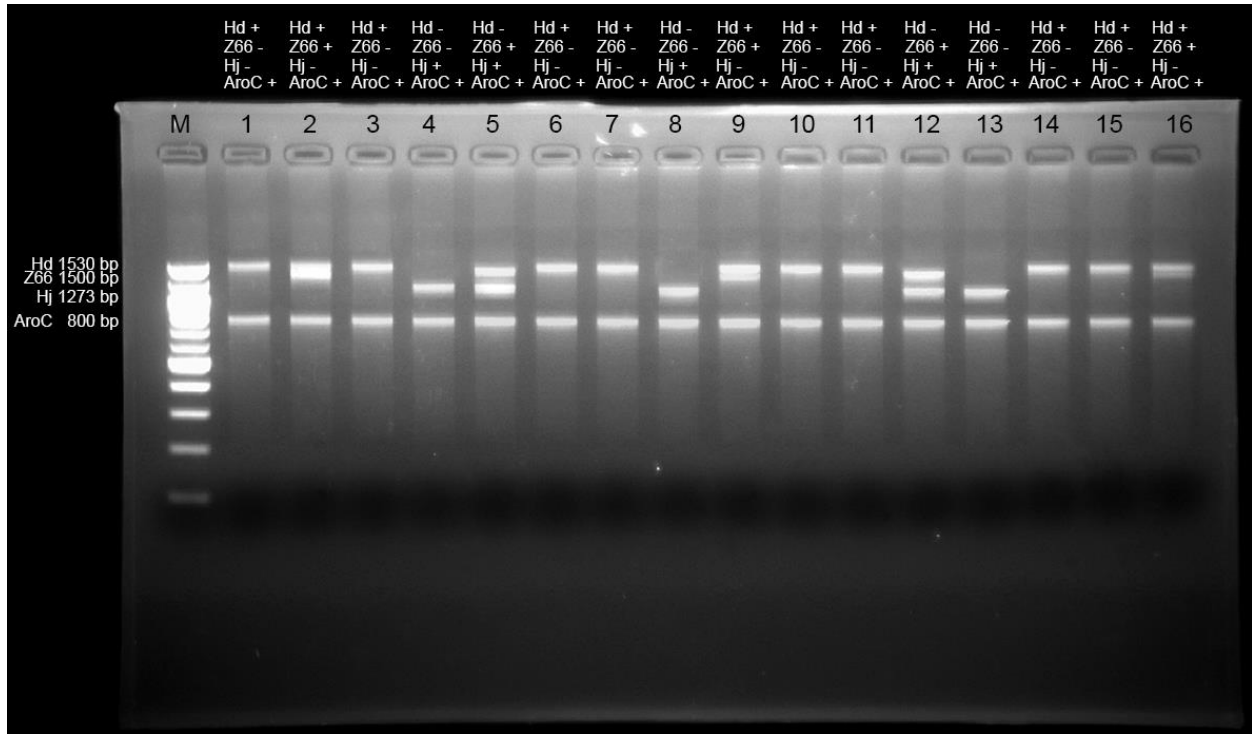


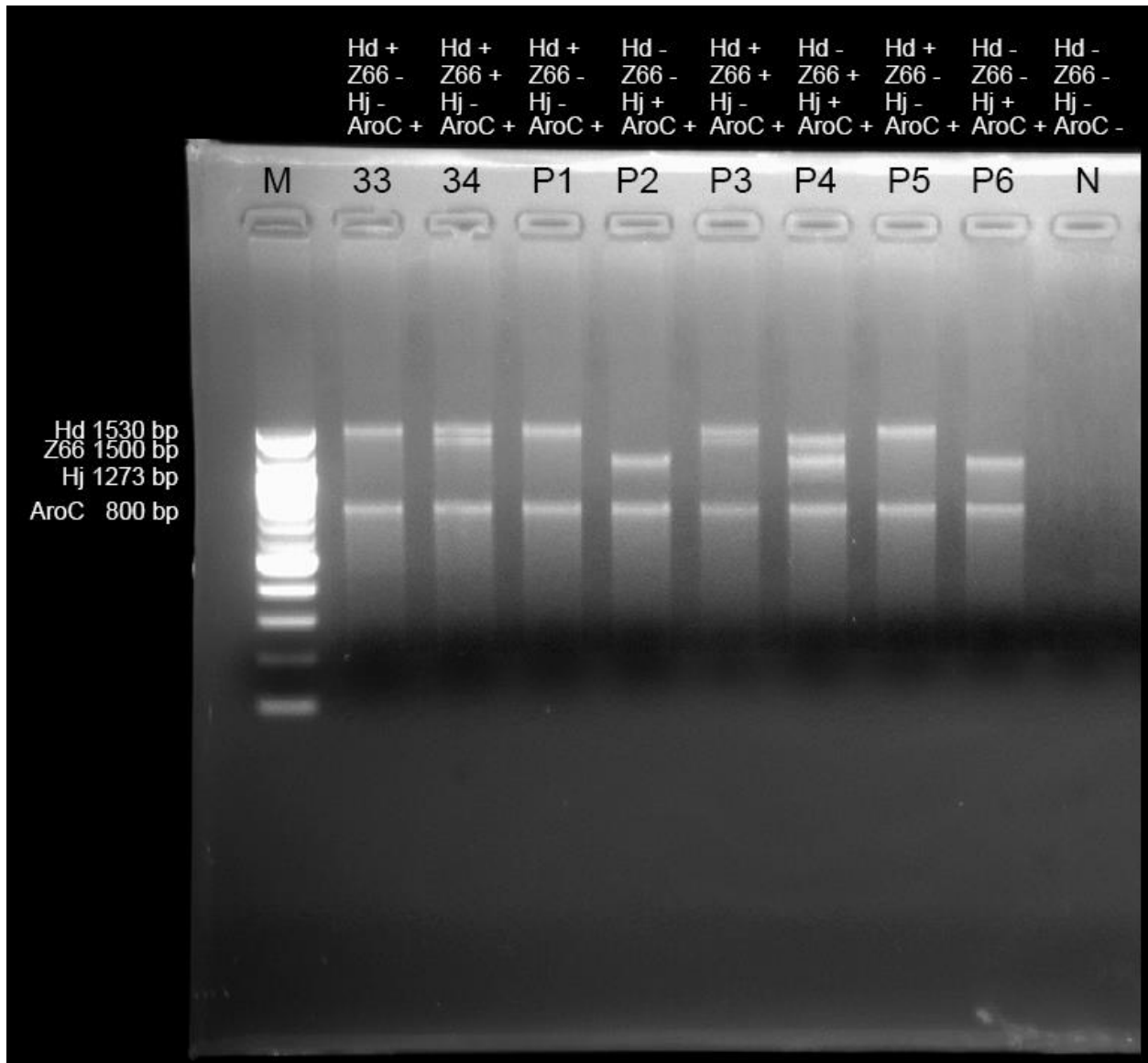
Lampiran 4. Hasil gel elektroforesis DNA Nested PCR dari darah penderita DTAR





Lampiran 5. Hasil gel elektroforesis gen flagellin Hd+, Hj+, Hd+z66+, Hj+z66+, Hd+z66IND+ dan Hj+z66IND+ dari sampel penderita DTAR





Hd 1530 bp
 Z66 1500 bp
 Hj 1273 bp
 AroC 800 bp



Optimization Software:
www.balesio.com

