

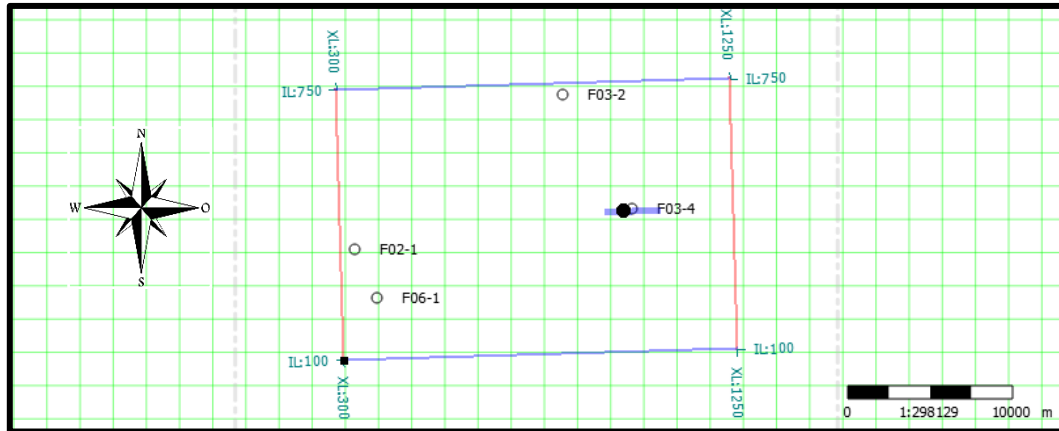
## DAFTAR PUSTAKA

- Abdullah, Agus., 2007., *Ensiklopedia Seismik.*,  
<http://ensiklopediseismik.blogspot.co.id/>., diakses pada Mei 2022.
- Asquith, G., & Kyrgowski., 2004., *Basic Well Log Analysis.*, 2nd ed. Tulsa: *The American Association Petroleum Geology.*
- Bobby, I., 2011., *Analisa Metode Inversi Impedansi Akustik dan Seismik Multiatribut Untuk Karakterisasi Reservoar Pada Lapangan F3 Netherland.*, Jurusan Fisika., Universitas Indonesia.
- Brown, A. R., 2004., *Interpretation of Three-Dimensional Seismic Data (6th Edition).*, Memoir 42. American Association of Petroleum geologists., Tulsa, Oklahoma., Jointly of AAPG and SEG.
- Brown, A.R. 2000., *Interpretation of Three-Dimensional Seismic Data : Fifth Edition.*, AAPG Memoir 42 SEG Investigations in Geophysics., No. 9, Oklahoma-USA.
- Cameron, T.D.J., Crosby, A., Balson, P.S., Jeffery, D.H., Lott, G.K., Bulat, J. and Harrison, D.J., 1992., *United Kingdom offshore regional report: the geology of the southern Southern North Sea.*, HMSO., London.
- Cooke, D., Cant, J. 2010., “*Model-based Seismic Inversion: Comparing deterministic and probabilistic approaches*”., CSEG Recorder Volume 35 number 4., Calgary: Canadian Society of Geophysical Engineering.
- Harsono. A., 1997., *Pengantar Evaluasi Log.*, Schlumberger Data Services., Jakarta.
- Herron, D.A., 2011., “*First Steps in Seismic Interpretation*”., Oklahoma: Society of Exploration Geophysicist.
- Knödel, K., Lange, G., dan Voigt, H.J, 2007., *Environmental Geology: Handbook of Field Methods and case Studies.*, Springer Berlin Heidelberg New York.
- Kuncoro, Trio Adi., 2020., *Identifikasi persebaran porositas pada Blok F3 Netherlands menggunakan analisis multiatribut*”, Program studi Geofisika., Universitas Pertamina: Jakarta.
- Jager, D.J. and Geluk, M.C., 2007., *Geology of The Natherlands: Petroleum Geology.*, 241-264.
- Mohame, Hassan Hussien Hassan Khalid El-Maghawry Wafaa., *Model-Based Inversion In North Sea F3-Block Dutch Sector.* 2015.

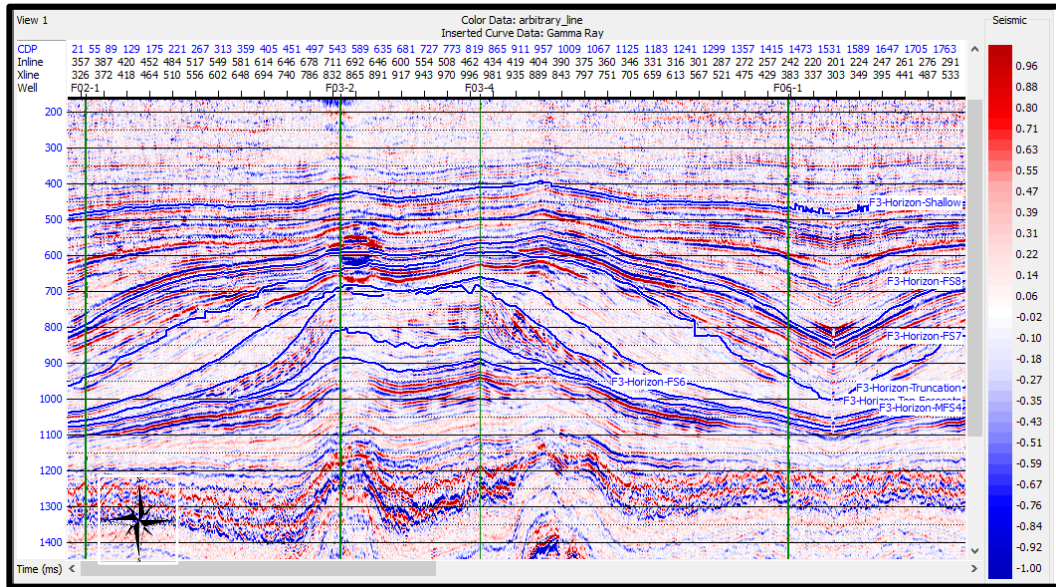
- Osama., 2009., *Rock Porosity.*, King Saud University: Saudi Arabia
- Rider, M., 2000., *The Geological Interpretation Of Well Logs*, Sutherland, Scotland.
- Rondeel, H., Batjes, D., Nieuwenhuijs, W., 1996., *Geology of gas and oil under the Netherlands*; Kluwer Academic Publishers: Alphen aan den Rijn., The Netherlands.
- Russel, H. B., 199., *Introduction to Seismic Inversion Methods. 3rd ed Vol.II ed. (E.C. Series. Penyunt)*: S.N Domenico.
- Russell, H., 1999., *Strata Theory.*, CE8R1 Version 64 p ed. s.l: Hampson-Russell.
- SA Rensen, J.C., Gregersen, U., Breiner, M. & Michelsen, O, 1997., *High-frequency sequence stratigraphy of Upper Cenozoic deposits in the central and southeastern Southern North Sea areas. Marine and Petroleum Geology.*, vol. 14, no. 2, p. 99-123.
- Schroot, B.M., and Haan, H.B., 2003., *Intra-Carboniferous tectonics of the Southern Southern North Sea Basin. Fifteenth International Congress on Carboniferous and Permian Stratigraphy.*, August 10-16 Utrecht., abstract no. 319, p. 479- 480.
- Sismanto., 1996., *Interpretasi Data Seismik.*, Laboratorium Geofisika Program Studi Geofisika Departemen Fisika Fakultas Matematika dan Ilmu Pengetahuan Alam Universitas Gadjah Mada., Yogyakarta.
- Sukmono, S., 1999., *Interpretasi Seismik Refleksi.*, Bandung: Institut Teknologi Bandung.
- Sukmono, S., 2000., “Seismik Inversi Untuk Karakterisasi Reservoir”., Departemen Teknik Geofisika., Institut Teknologi Bandung: Bandung.
- Sukmono, S., 2001. *Interpretasi Seismik Refleksi.* Departemen Teknik Geofisika., Institut Teknologi Bandung: Bandung.
- Walden, A. T., and R. E. White., 1998., *Seismic wavelet estimation: a frequency domain solution to a geophysical noisy input-output problem: IEEE Transactions on Geoscience and Remote Sensing.*, 36., 287-297.

## **LAMPIRAN**

# LAMPIRAN 1. BASEMAP LOKASI PENELITIAN

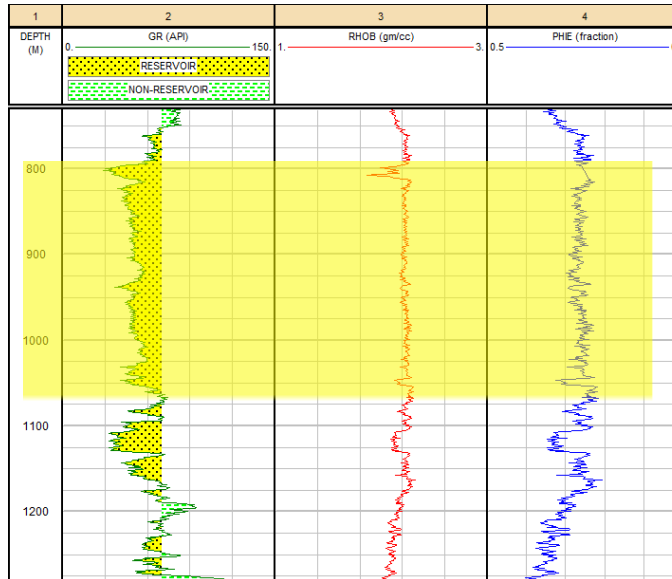


## LAMPIRAN 2. DATA SEISMIK & SUMUR (PADA ARBITRARY LINE)

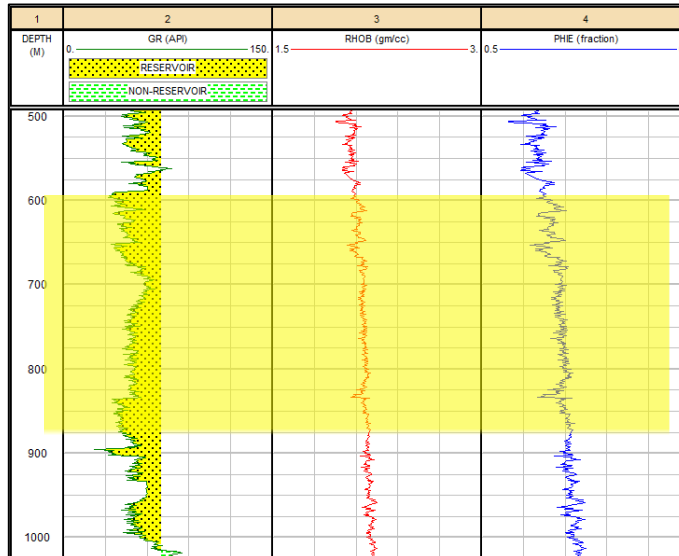


### LAMPIRAN 3. QUICK LOOK ZONA INTEREST

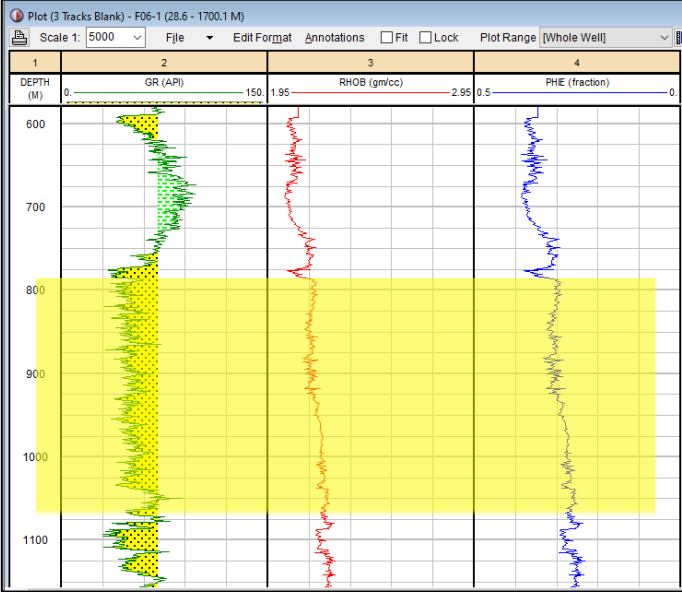
#### 1. Quick Look Sumur F02-1



#### 2. Quick Look Sumur F03-2

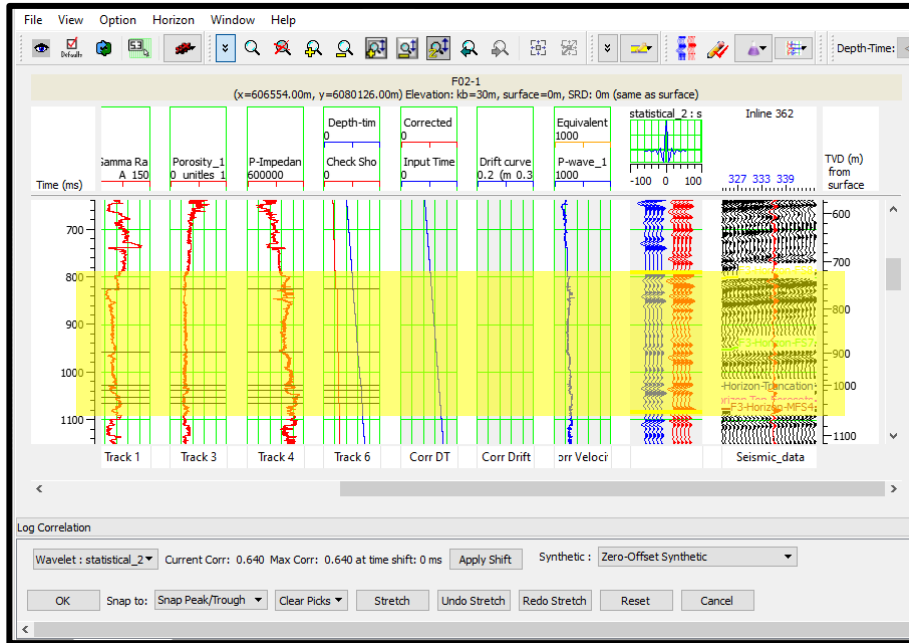


### 3. Quick Look Sumur F06-1

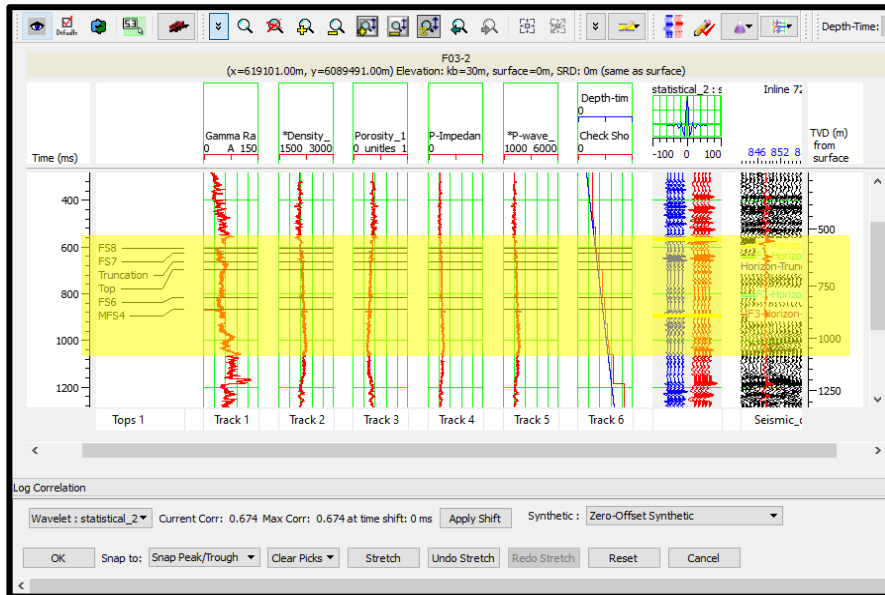


## LAMPIRAN 4. WELL SEISMIC TIE

### Lampiran 4.1 Well Seismic Tie pada sumur F02-1

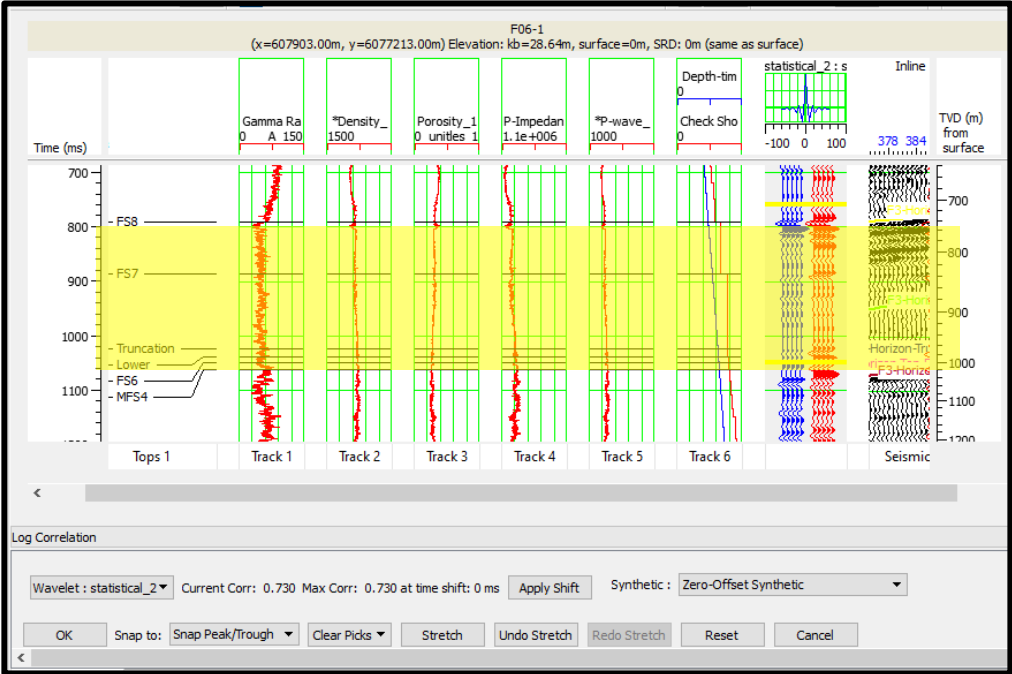


### Lampiran 4.2 Well Seismic Tie pada sumur F03-2





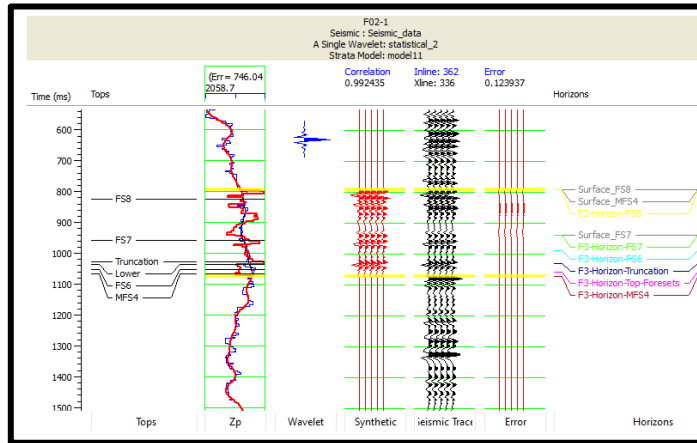
**Lampiran 4.3 Well Seismic Tie pada sumur F06-1**



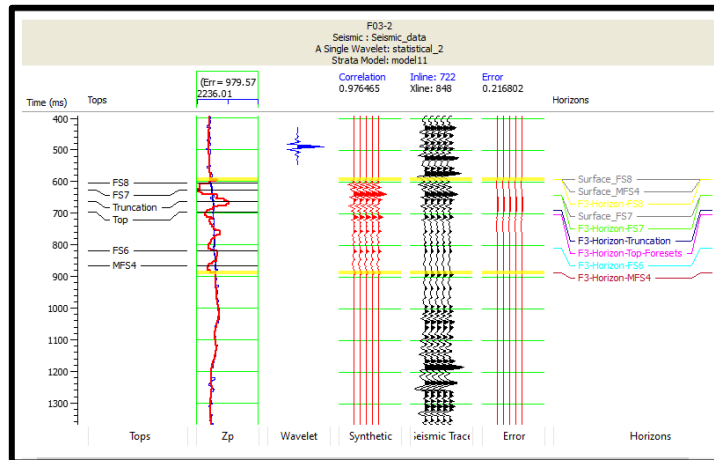
## LAMPIRAN 5. HASIL ANALISIS PRA-INVERSI

### Lampiran 5.1 ANALISIS PRA-INVERSI MODEL BASED

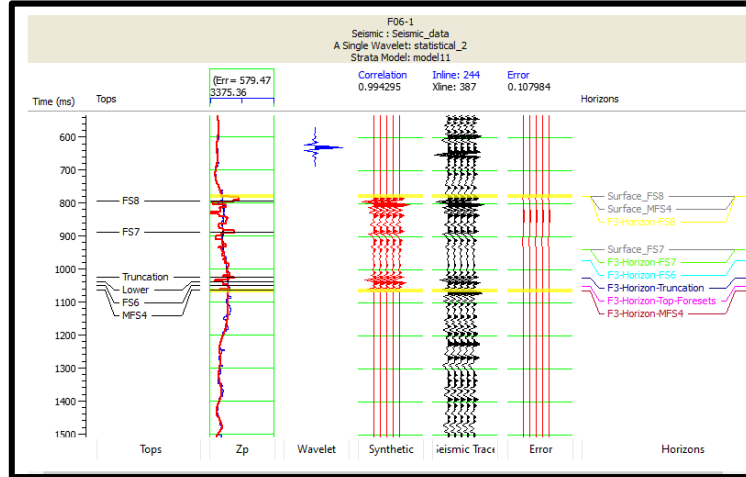
#### Lampiran 5.1.1 Analisis Pra-inversi Model Based sumur F02-1



#### Lampiran 5.1.2 Analisis Pra-inversi Model Based sumur F03-2

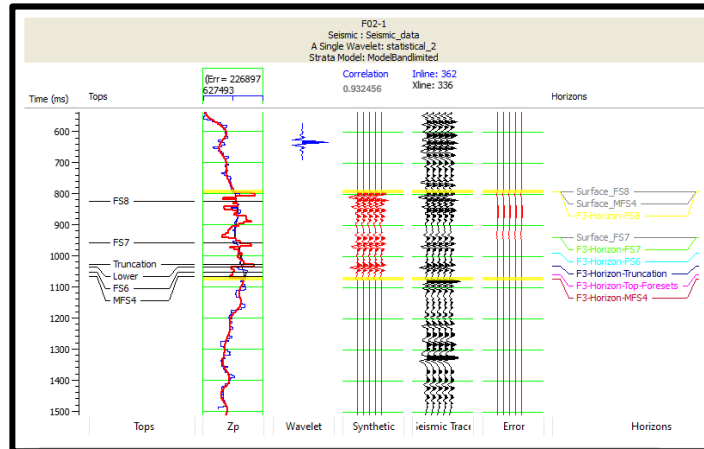


### Lampiran 5.1.3 Analisis Pra-inversi Model Based sumur F06-1

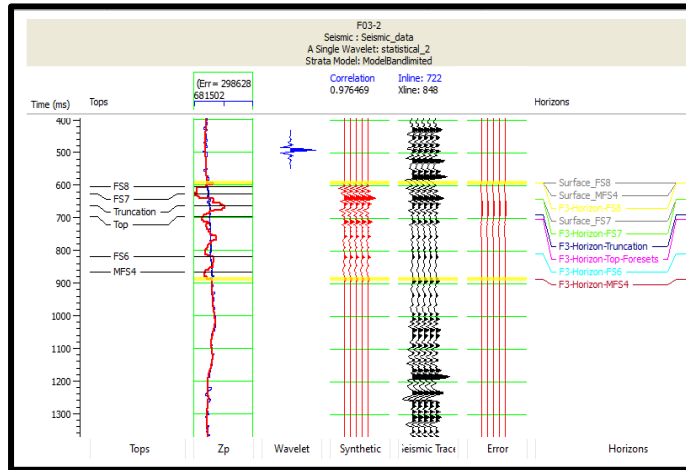


### Lampiran 5.2 ANALISIS PRA-INVERSI BANDLIMITED

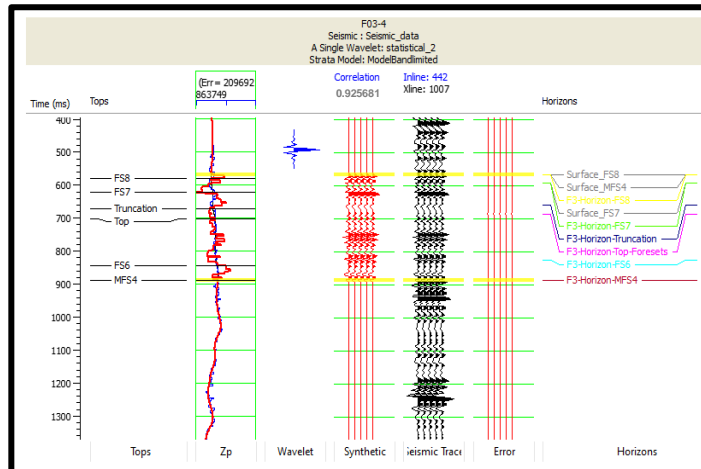
#### Lampiran 5.2.1 Analisis Pra-inversi Bandlimited sumur F02-1



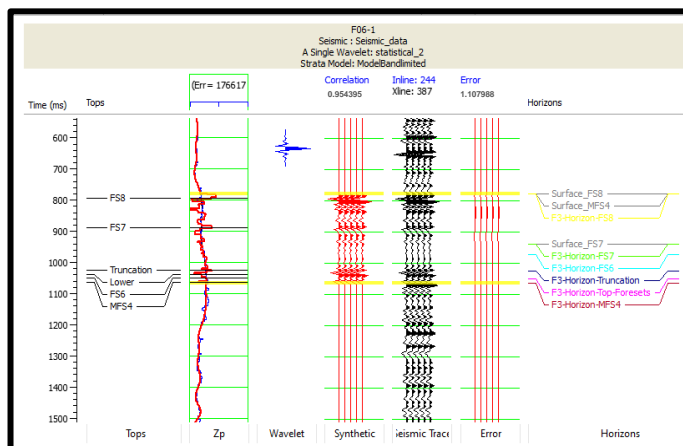
### Lampiran 5.2.2 Analisis Pra-inversi Bandlimited sumur F03-2



### Lampiran 5.2.3 Analisis Pra-inversi Bandlimited sumur F03-4

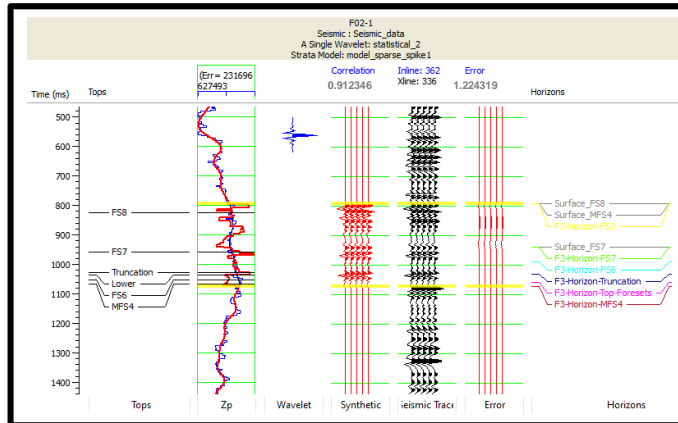


### Lampiran 5.2.4 Analisis Pra-inversi Bandlimited sumur F06-1

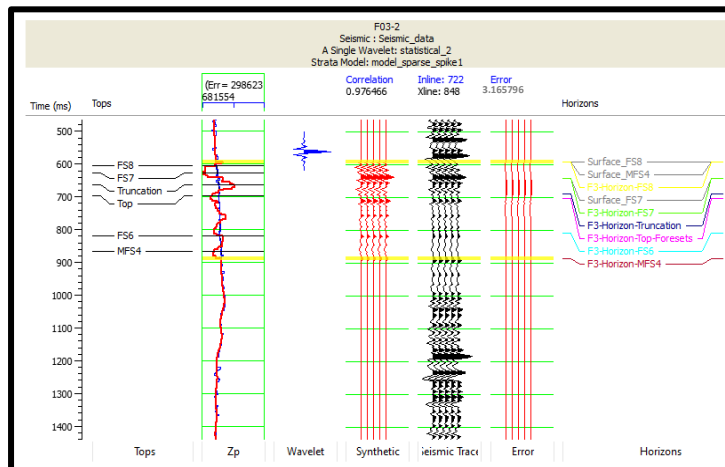


## Lampiran 5.3 ANALISIS PRA-INVERSI LPSS

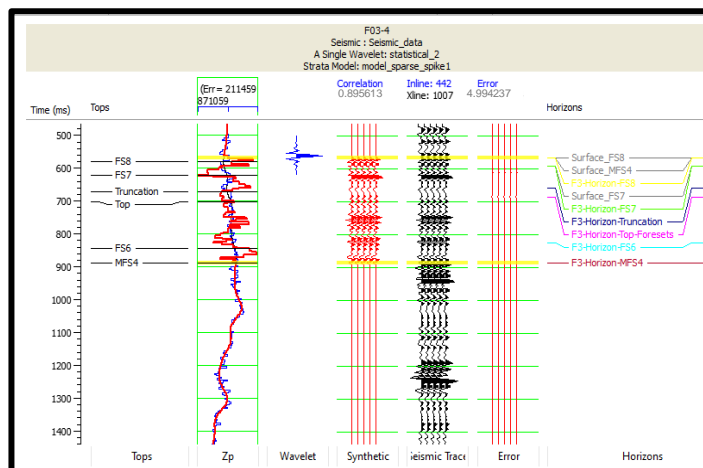
### Lampiran 5.3.1 Analisis Pra-inversi LPSS sumur F02-1



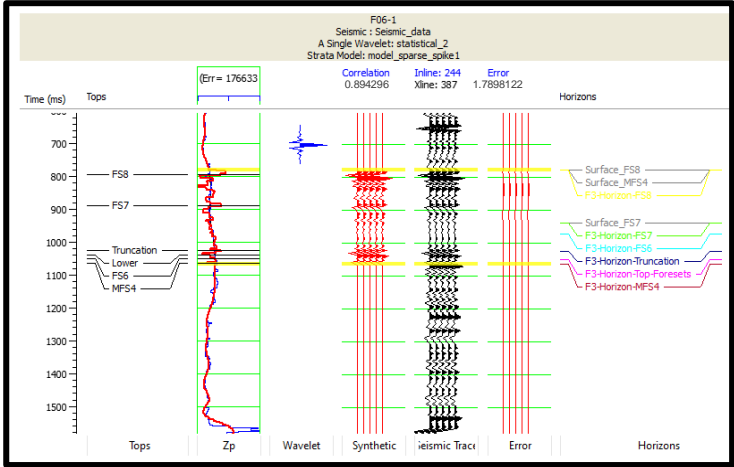
### Lampiran 5.3.2 Analisis Pra-inversi LPSS sumur F03-2



### Lampiran 5.3.3 Analisis Pra-inversi LPSS sumur F03-4

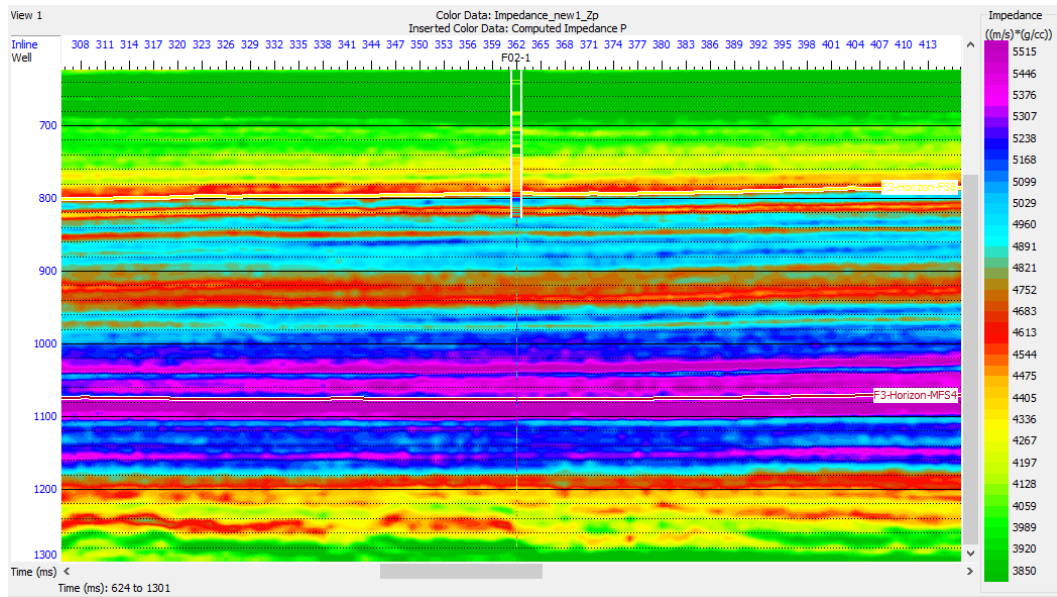


### Lampiran 5.3.4 Analisis Pra-inversi LPSS sumur F06-1

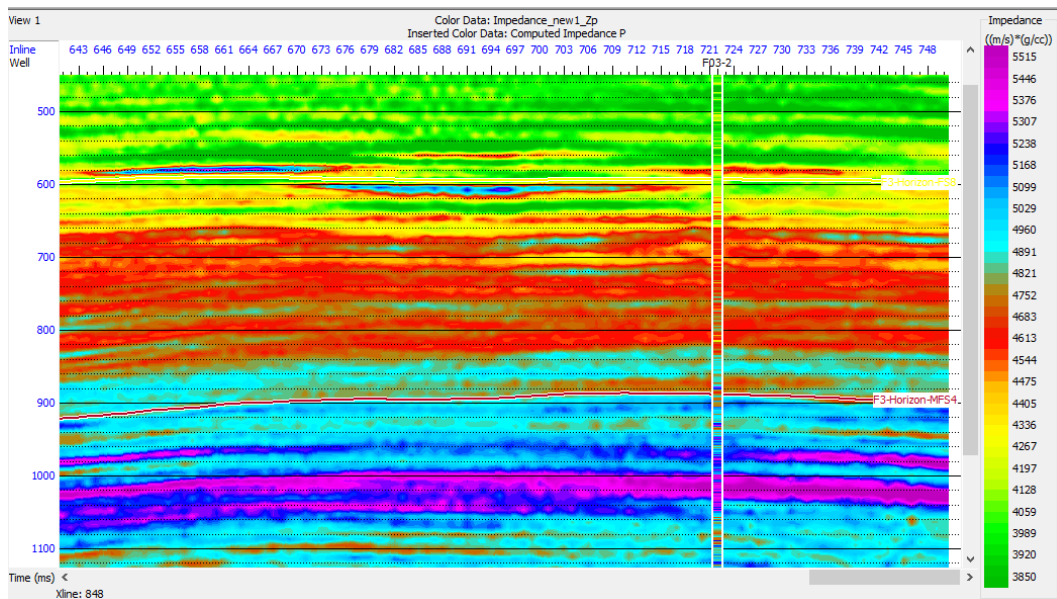


## LAMPIRAN 6. HASIL INVERSI PENAMPANG IMPEDANSI AKUSTIK MODEL BASED

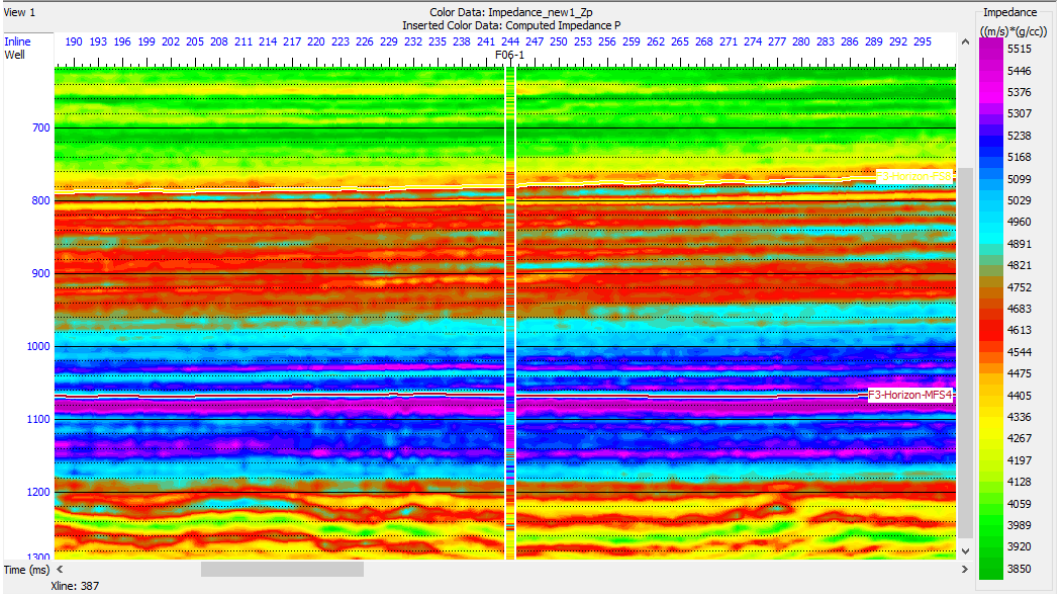
### Lampiran 6.1 Hasil Inversi akustik pada sumur F02-1



### Lampiran 6.2 Hasil Inversi akustik pada sumur F03-2



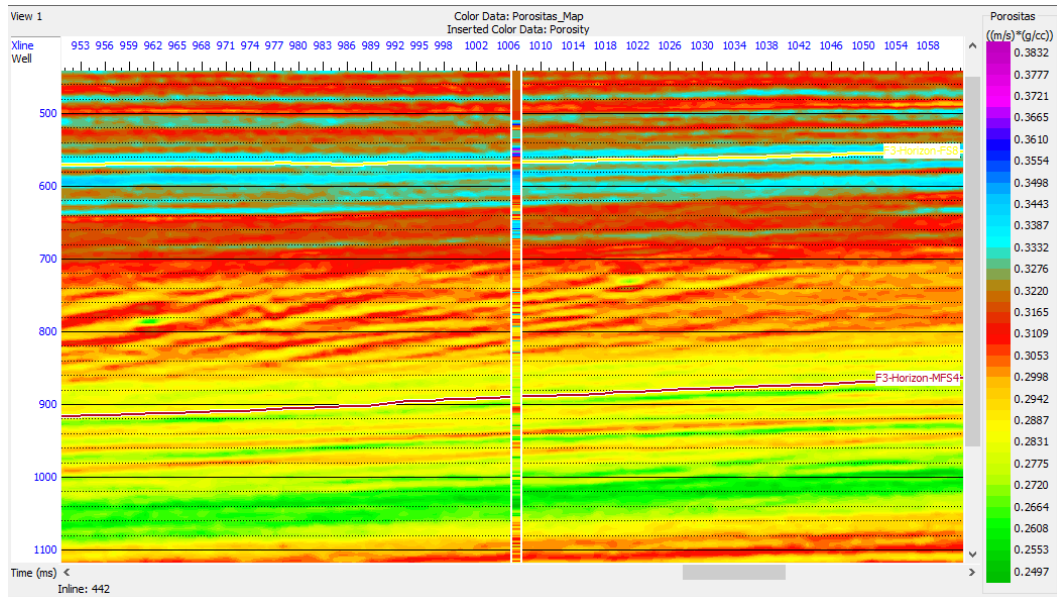
### Lampiran 6.3 Hasil Inversi akustik pada sumur F06-1



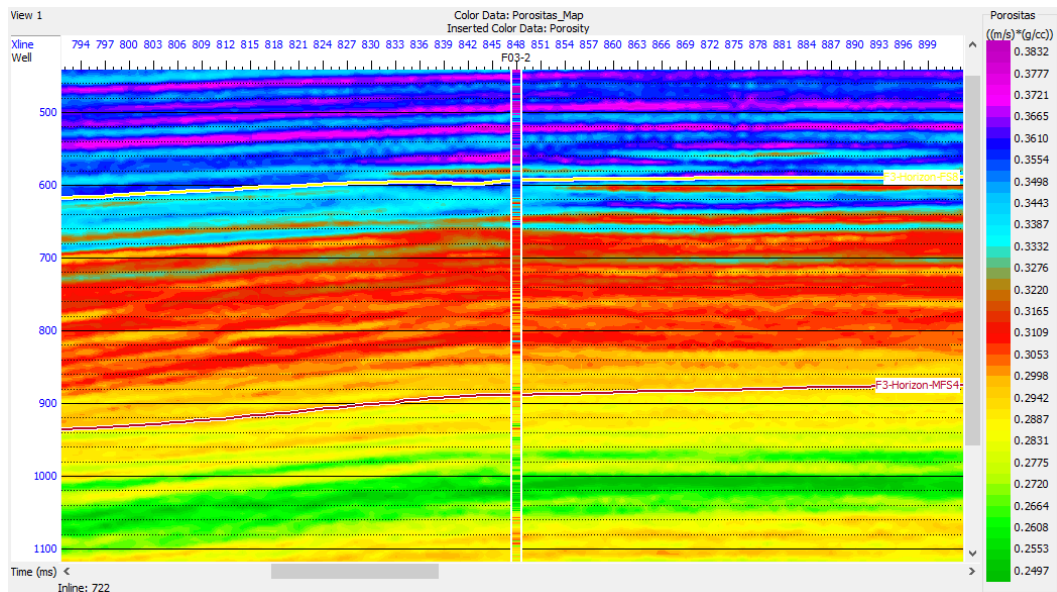


## LAMPIRAN 7. PENAMPANG POROSITAS HASIL TRANSFORMASI AKUSTIK IMPEDANSI

### Lampiran 7.1 Hasil Inversi akustik pada sumur F02-1



### Lampiran 7.2 Hasil Inversi akustik pada sumur F03-2



### Lampiran 7.3 Hasil Inversi akustik pada sumur F06-1

