



DAFTAR PUSTAKA

- Akbar, Z. (2019). Analisa Kebutuhan Juru Cat, Peralatan Cat, dan Material Cat Pada Bangunan Atas Kapal Ferry 300 GT. *Teknik Perkapalan*, 1-65.
- Ariany, Z. (2014). Kajian Reparasi Pengecatan pada Lambung Kapal (Studi Kasus KM. Kirana 3). *Teknik*, 27-32.
- Basuki, A. (2006). *Algoritma Pemrograman 2 Menggunakan Visual Basic 6.0*. Surabaya: Institut Teknologi Sepuluh Nopember.
- Beritatrans.com. (2023, Maret 30). *Harga Batu Bara Melesat, Kapal Tongkang Kebanjiran Order*. Retrieved from <https://www.beritatrans.com>.
- Biro Klasifikasi Indonesia. (2019). *Guidance for The Corrosion Protection and Coating system*. Jakarta: Biro Klasifikasi Indonesia.
- Chotimah, S. d. (2018). Contextual Approach using VBA learning Media to Improve Students, Mathematical Displacement and Disposition Ability. *ICE-STEM*, 1-10.
- Corrosion.ksc.nasa.gov. (2023, April 2). *Forms of Corrosion*. Retrieved from <https://corrosion.ksc.nasa.gov/>.
- Craig, Benjamin D, dkk. (2006). *A Program Management Guide for Selecting Materials, Spiral 2 (2nd Edition)*. Rome: Advanced Materials, Manufacturing, and Testing Information Analysis Center (AMMTIAC).
- Djamaris, A. (2011). *Applied Bussiness Computation*. Jakarta Selatan: Universitas Bakrie.
- Greenpeace.org. (2023, Maret 31). *Illegal logging discovered in West Papua by helicopter team*. Retrieved from <https://www.greenpeace.org/aotearoa>.
- Hidayat, W., & Febrianto, F. (2018). *Teknologi Modifikasi Kayu Ramah Lingkungan*. Bandar Lampung: Pustaka Media.
- Huang, V. (2022). *Technical Specification, New Building, BG. 240x64x14FT (H-1629)*. Batam: PT. Internasional Paint Indonesia.



- ISO 8501 1. (2023, April 5). Retrieved from <https://www.iso.org/standard/65207.html>.
- Kadam, A. V., & Nimbalkar, U. M. (2015). Automatic Assembly Modeling for Product. *Automatic Assembly Modeling for Product. International Journal of Engineering Research & Technology (IJERT)*, 79-89.
- Karyono, Tri, dkk. (2017). Analisis Teknik Pencegahan Korosi pada Lambung Kapal dengan Variasi Sistem Pencegahan ICCP dibandingkan dengan SACP. *Jurnal Pendidikan Profesional, Volume 6*, 7-17.
- Kurniawan, W. D., & Periyanto. (2018). Proses Sanblasting dan *Coating* pada Kapal di PT. Dok Perkapalan Surabaya. *Otopro Volume 13*, 44-53.
- Lebedev, dkk. (2021). Analysis of The Use of Paint *Coatings* to Protect the Hull from Corrosion. *ntelligent Information Technology and Mathematical Modeling 2021 (IITMM 2021)*, 1-9.
- Lestari, E. S. (2014). Pembuatan Program Perataan Parameter Jaring Poligon dengan Menggunakan Visual Basic for Application (VBA) Microsoft Excel. *Jurnal Geosip Undip*, 332-346.
- Manik, E. (2020). *Visual Basic 6.0 untuk Media Pembelajaran Interaktif*. Medan: LPPM UHN Press.
- Nogoro, & Golwa, G. V. (2019). Analisa Temperatur Optimal pada Proses Pelepasan Daya Rekat *Coating* Epoxy dan Plastik di Permukaan Beton/Semen dengan Metode Induksi Panas. *Jurnal Teknik Mesin, Volume 08*, 86-101.
- Okayama Y., dkk. (1983). *Integrated Hull Construction Outfitting and Painting (IHOP)*. Los Angeles: Todd Pacific Shipyard Corporation.
- Papalangi, F. d. (2015). Studi Perancangan Tongkang Pengangkut Limbah Batubara di PLTU Tanjung Jati B Jepra. *Teknik Perkapalan - Vol. 3, No.2*, 222-229.
- Sindar, A. (2018). *Struktur Data dan Algoritma dengan C++*. Serang: CV. AA. RIZKY.
- SteelConstruction.info. (2023, april 5). *Surface preparation*. Retrieved from https://steelconstruction.info/The_Steel_Construction_Information_System.
- Utomo, B. (2009). Jenis Korosi dan Penanggulangannya. *Kapal, Volume 6*, 138-141.



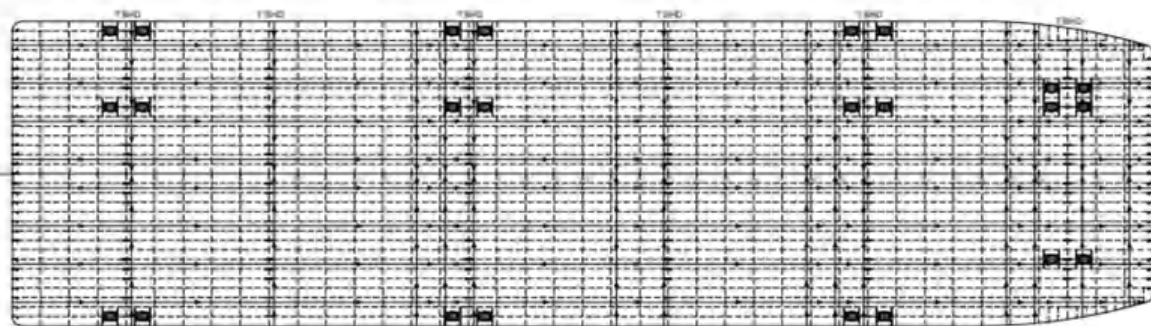
Wahyudin. (2011). *Teknik Produksi Kapal*. Makassar: Lembaga Kajian dan Pengembangan Pendidikan.

Winamo, E. d. (2014). *Pemrograman VBA untuk Excel All Version*. Jakarta: PT Elex Media Komputindo.

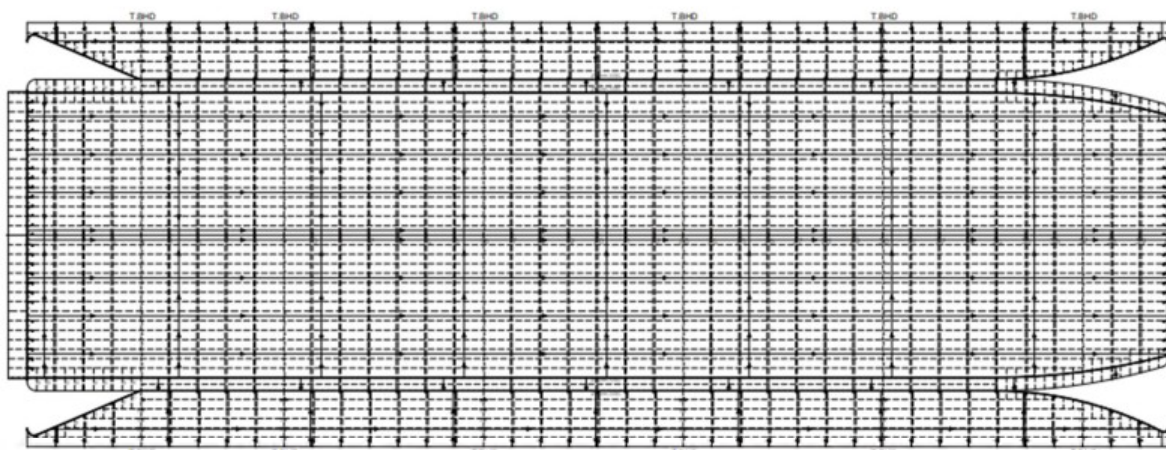
Windyandari, Aulia, dkk. (2013). Studi Perbandingan Metode Pelapisan (*Coating*) pada Ruang Muat Berbasis Regulasi IMO. *Teknik, Volume 34*, 174-181.



LAMPIRAN

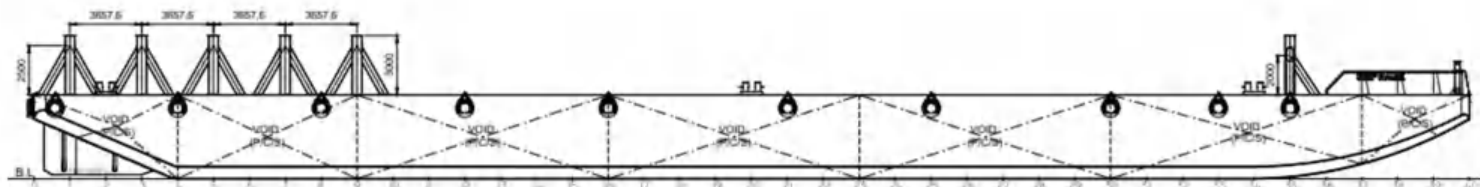


MAIN DECK (14 mm)

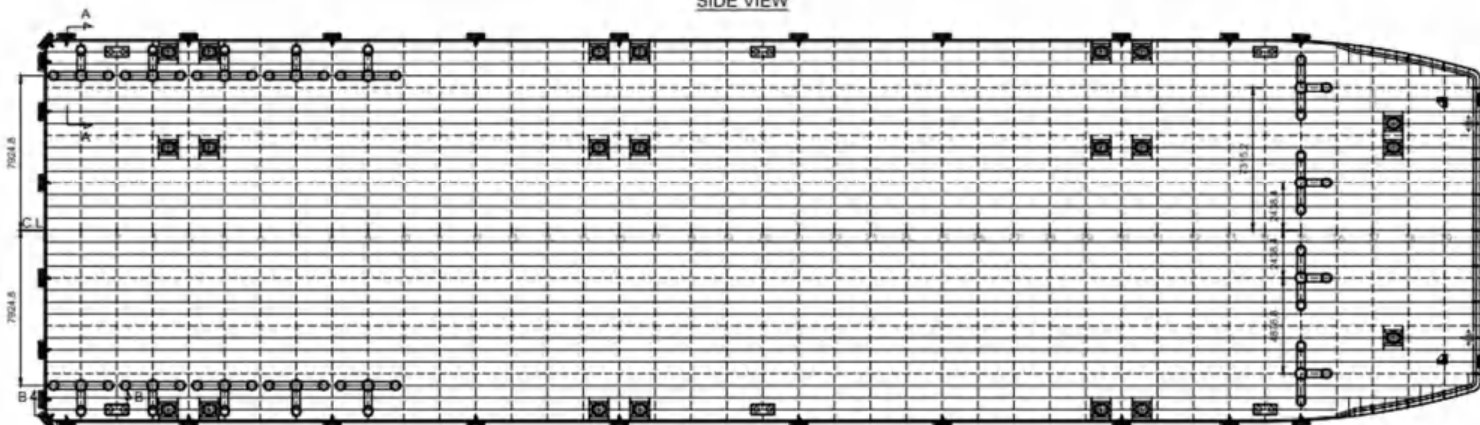


SIDE SHELL, BOTTOM SHELL, HEADLOG & TRANSOM PLATING (12 mm)

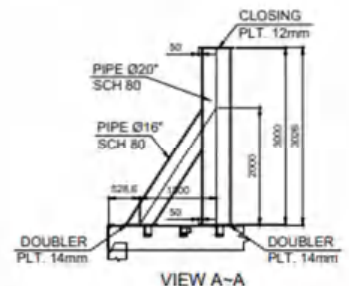
REVISION	NO
DATE	20
DESCRIPTION	20
DECK CARGO BARGE 240' X 64' X 14'	
SHELL EXPANSION	
DESIGNED BY	1980/001
CHECKED BY	1980/001
 PT. KARYA TEKNIK UTAMA Jl. Sunda Baru Sempang, Sempang Mangrove RT. 001, RW. 011 Arah Pelabuhan Sempang 20433 Batam, Kepulauan Riau Telp: (0778) 807 5000, 807 5061, 807 5000 Fax: (0778) 807 5000	
DESIGNED BY	1980/001
CHECKED BY	1980/001
APPROVED BY	1980/001
SCALE	1 : 240
DATE	1980/001
SHEET 1 OF 1	



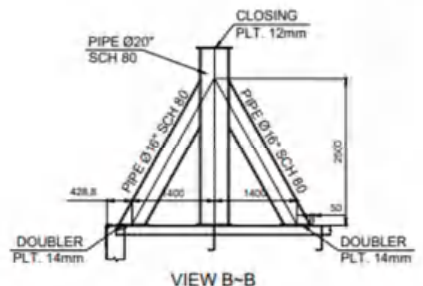
SIDE VIEW



MAIN DECK PLAN



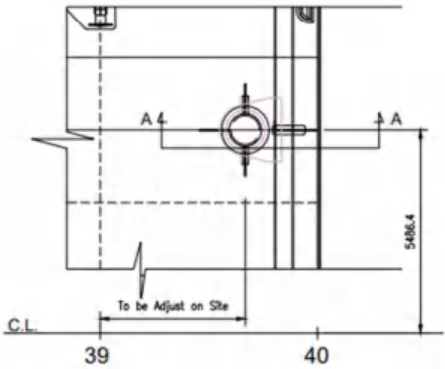
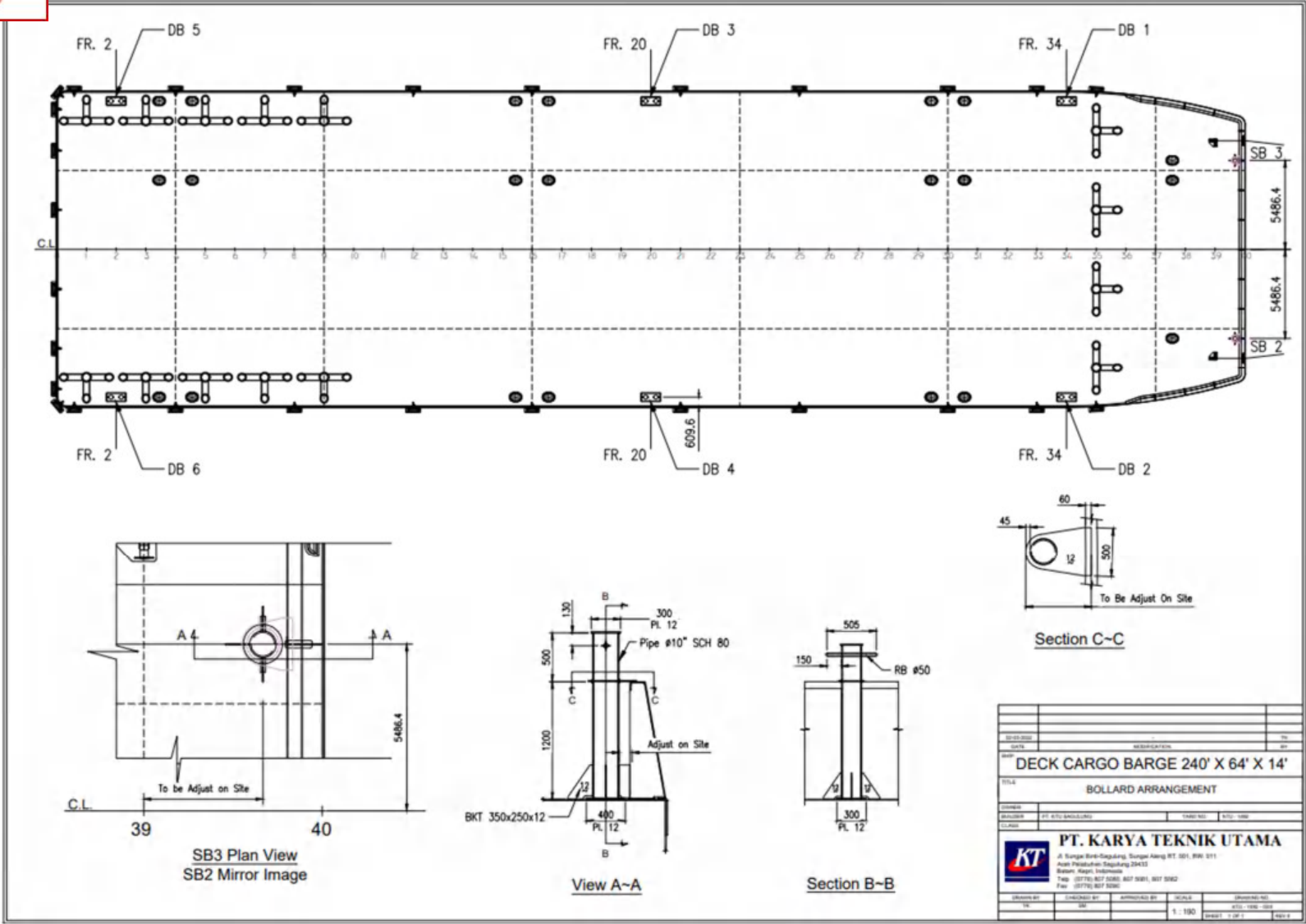
VIEW A-A



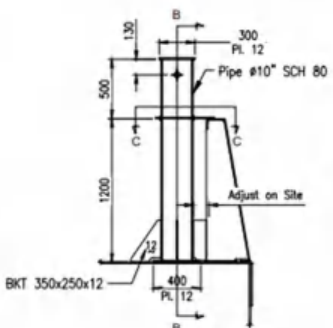
VIEW B-B

DETAIL STANCHION (TYPICAL)

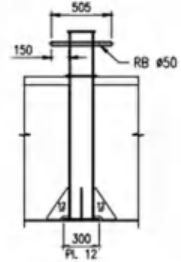
NO.	1	DECK CARGO BARGE 240' X 64' X 14'
TITLE	PIPE STANCHION ARRANGEMENT	
DESIGNED BY	REV. NO.	DATE
DRAWN BY	1000-01	2011-08-01
PT. KARYA TEKNIK UTAMA		
Jl. Sungai Bendi-Depok, Depok Area RT. 001, RW. 5/11 Arah Pasir Putih Depok, Depok Depok, West Java, Indonesia Telp. (0719) 837 8242, 837 8241, 837 8363 Fax. (0719) 837 8240		
SCALE	1:100	DATE
NO.	1	REV. NO.
NO.	1	DATE



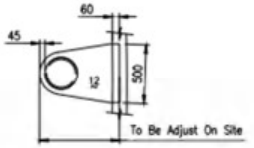
SB3 Plan View
SB2 Mirror Image



View A-A

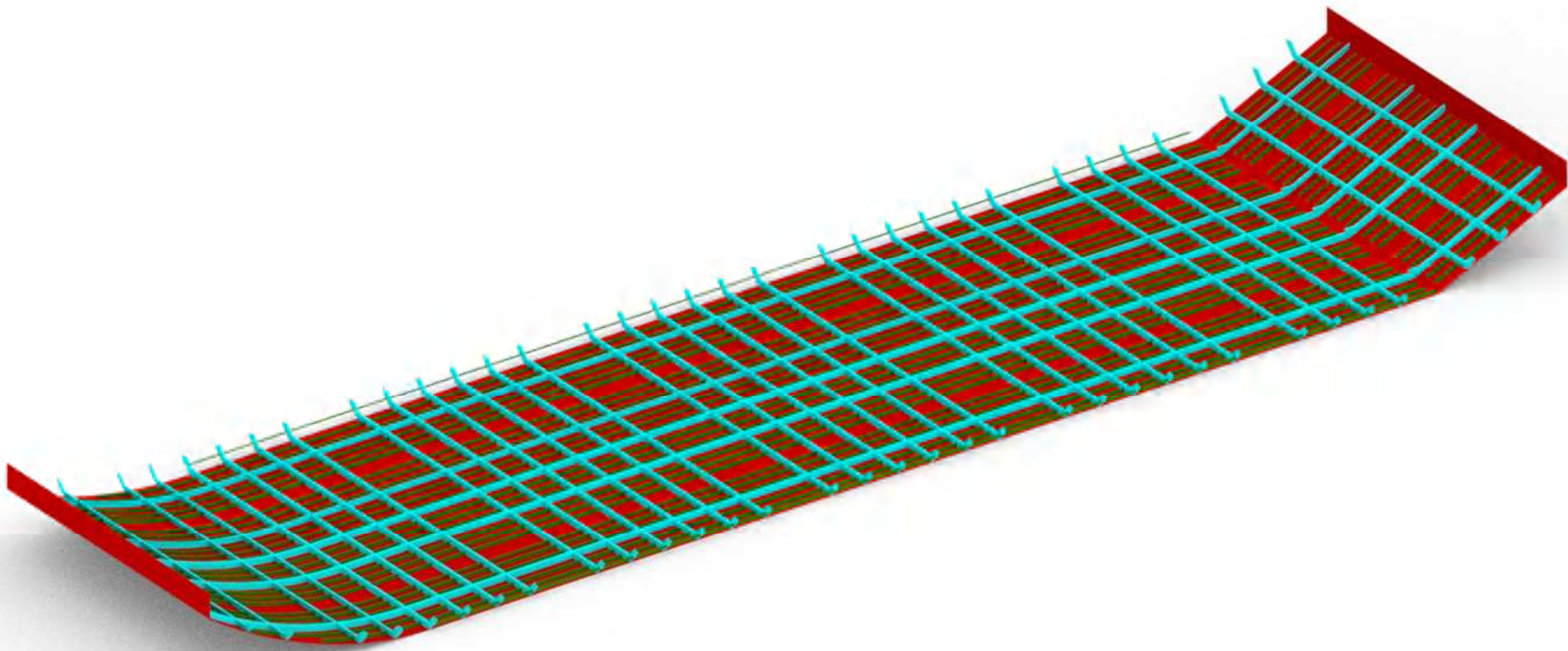


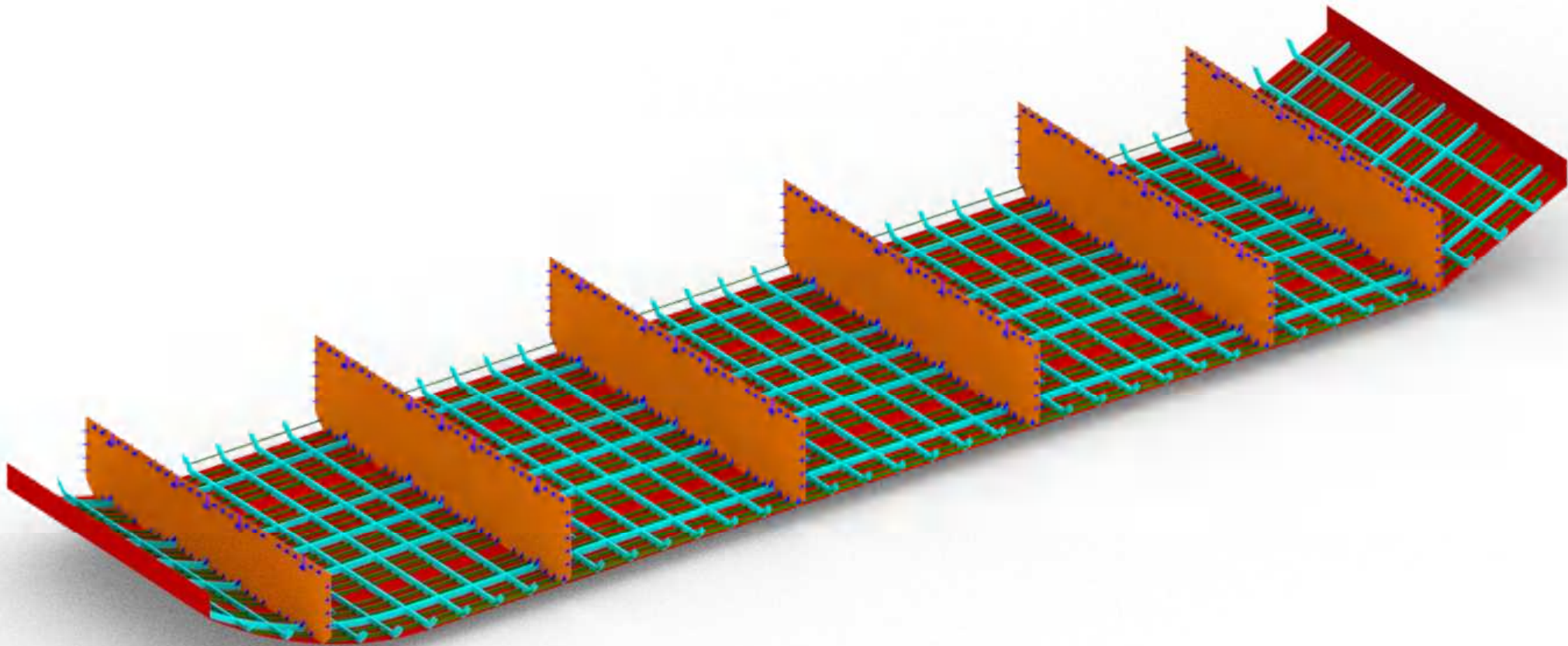
Section B-B

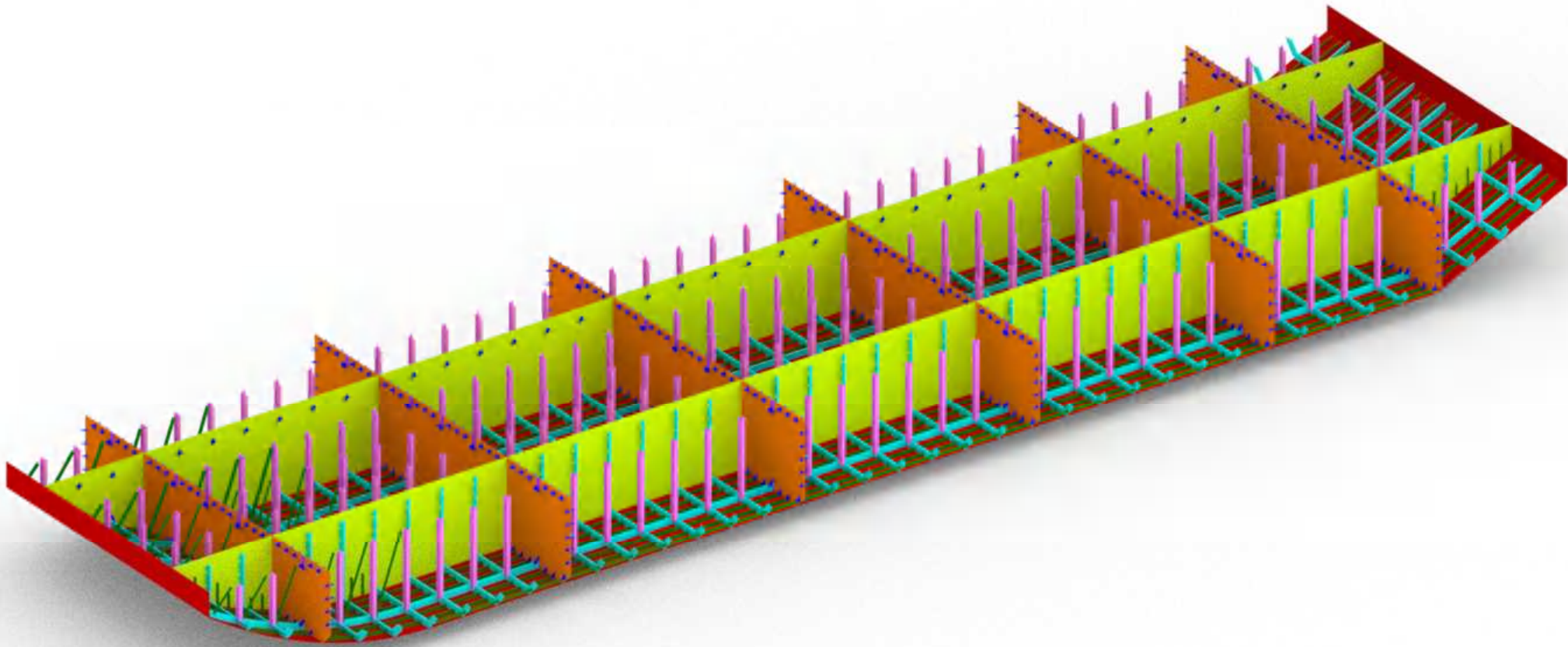


Section C-C

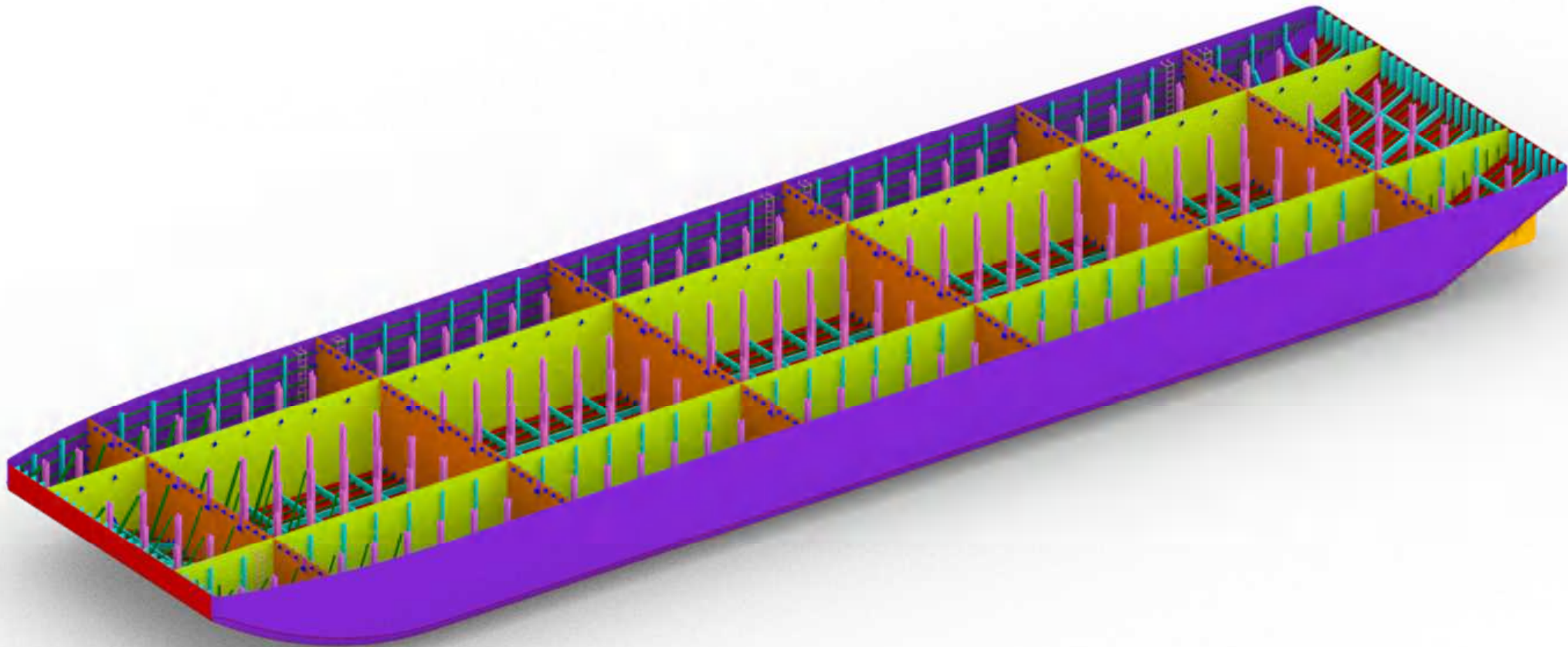
NO.	REVISION	BY	DATE
PROJECT: DECK CARGO BARGE 240' X 64' X 14'			
TITLE: BOLLARD ARRANGEMENT			
DESIGNER:	PT. KTY TEKNIK UTAMA	DATE:	10/11/2010
CHECKER:			
PT. KARVA TEKNIK UTAMA Jl. Sungai Bendi-Bagaling, Sungai Aneuk RT. 001, RW. 011 Aceh Pesisir Utara, Kabupaten Pangkajene Kepulauan Batam, Kepulauan Riau, Indonesia Telp: (0777) 887 1088, 887 1081, 887 1082 Fax: (0777) 887 1080			
DRAWN BY:	CHECKED BY:	APPROVED BY:	SCALE:
			1 : 100
TOTAL SHEETS:			

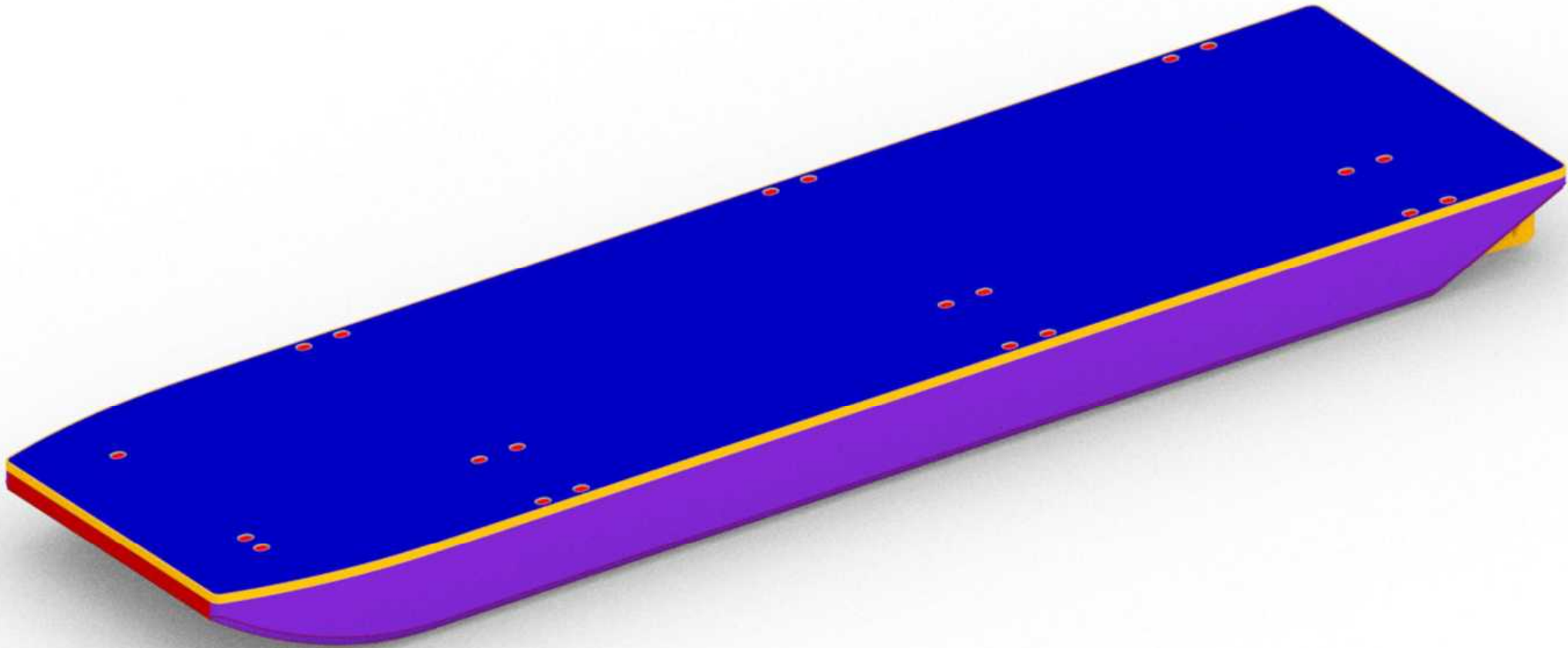




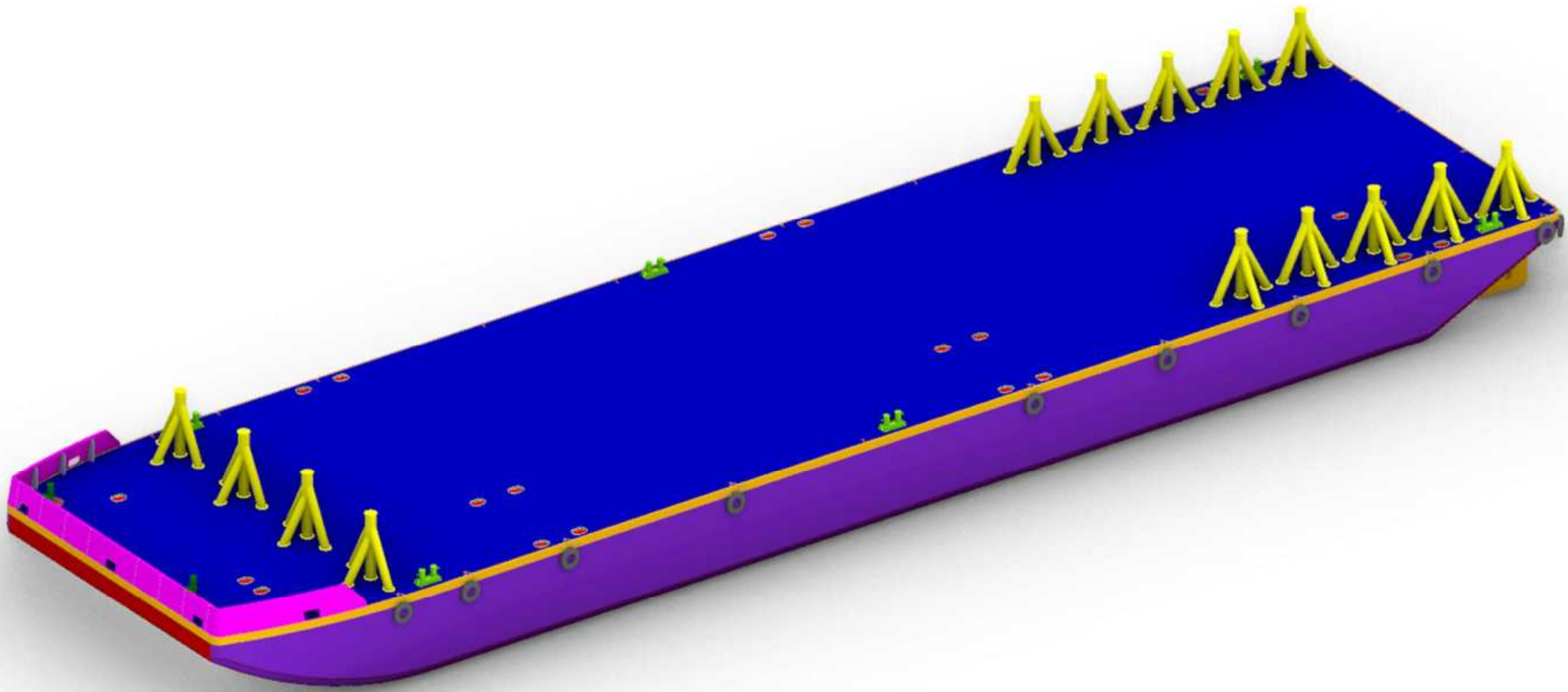


www.pajefo.com
Optimization software:





www.pjefjo.com
Optimization software:





Interspec

Where legislation does not explicitly restrict or limit the use of lead containing coatings it is the responsibility of the client to inform International Paint in writing of their specific requirements

Technical Specification

NewBuilding

BG. 240 x 64 x 14FT (H-1629)

PT. KARYA TEKHNİK UTAMA

Other Ports, Indonesia

03-Oct-2022

IDVH1-3JJT-RBQT/5

VINCE

vince.huang@akzonobel.com

PT. INTERNATIONAL PAINT INDONESIA

Komp. Sarana Industrial Point

Blok E No. 1, Batam Centre

Telp : (0778) 471760 / 61

Marine Coatings

Unless otherwise agreed in writing, all products supplied and technical advice given by us are subject to our standard terms and conditions of sale. Please note that a surcharge may be applied to the prices listed, in which case this will be notified to you by your International Paint representative. In the event that supplies are made and technical advice is given by one of our associated companies then such supplies and technical advice shall be subject to the standard terms of sale of that company, a copy of which is available upon request

IDVH1-3JJT-RBQT/5

03-Oct-2022

1

BG. 240 x 64 x 14FT (H-1629)

AkzoNobel



Main Schemes		
Area	Description	Area (m ²)
1. TOPSIDE	Refer to product description.	560
2. UNDERWATER - FLAT BOTTOM & VERTICAL SIDE 1.0M	Refer to product description.	1,460
3. MAINDECK	Refer to product description.	1,428
4. SUPPORT BEAM	Refer to product description.	290
5. CHAIN LOCKER	Refer to product description.	50
6. CHAIN (BAN DAPRA)	Refer to product description.	40
7. MARKING	Refer to product description.	20
Thinners		

Marine Coatings

Unless otherwise agreed in writing, all products supplied and technical advice given by us are subject to our standard terms and conditions of sale. Please note that a surcharge may be applied to the prices listed, in which case this will be notified to you by your International Paint representative. In the event that supplies are made and technical advice is given by one of our associated companies then such supplies and technical advice shall be subject to the standard terms of sale of that company, a copy of which is available upon request

IDVH1-3JIT-RBQT/5
03-Oct-2022
2
BG. 240 x 64 x 14FT (H-1629)



1. TOPSIDE [560 m²]

Refer to product description.

Surface Preparations

Fresh water wash to remove all dirt and contamination, as necessary. Degrease according to SSPC-SP1 solvent cleaning. Ensure area is clean and dry prior to application.
Part/Spot blast to ISO 8501-1 Sa2 or SSPC-SP6.
Sweep blasting

Product	Paint Type	Colour	Sales Code	Volume Solids (%)	Coats	DFT (µm)	WFT (µm)	PSR (m ² /lt)	Overcoating 30°C		Thinner	Volume (lt)
									Min	Max		
Intertuf 262	Epoxy Anticorrosive	Red	KHA303/KHA062	73	FC	175	240	3.21	5hrs	21days	GTA220	174.50
Intergard 263	Epoxy Tie Coat	Light Grey	FAJ034/FAA262	57	FC	75	132	5.85	6hrs	5days	GTA220	95.70
Interthane 990	Polyurethane Finish	Black	PHY999/PHA046	57	FC	50	88	8.78	5hrs	ext.	GTA056, GTA713, GTA733	63.80
						300	460					334.00

2. UNDERWATER - FLAT BOTTOM & VERTICAL SIDE 1.0M [1,460 m²]

Refer to product description.

Surface Preparations

Fresh water wash to remove all dirt and contamination, as necessary. Degrease according to SSPC-SP1 solvent cleaning. Ensure area is clean and dry prior to application.
Part/Spot blast to ISO 8501-1 Sa2 or SSPC-SP6.
Sweep blasting

Product	Paint Type	Colour	Sales Code	Volume Solids (%)	Coats	DFT (µm)	WFT (µm)	PSR (m ² /lt)	Overcoating 30°C		Thinner	Volume (lt)
									Min	Max		
Intertuf 262	Epoxy Anticorrosive	Red	KHA303/KHA062	73	FC	175	240	3.21	5hrs	21days	GTA220	454.80
Intergard 263	Epoxy Tie Coat	Light Grey	FAJ034/FAA262	57	FC	75	132	5.85			GTA220	249.60
Interclene 145	Tin Free Antifouling	Red	BCA300	52	FC	75	144	5.22			GTA004	279.70
						325	516					984.10

Marine Coatings

Unless otherwise agreed in writing, all products supplied and technical advice given by us are subject to our standard terms and conditions of sale. Please note that a surcharge may be applied to the prices listed, in which case this will be notified to you by your International Paint representative. In the event that supplies are made and technical advice is given by one of our associated companies then such supplies and technical advice shall be subject to the standard terms of sale of that company, a copy of which is available upon request

IDVH1-3JIT-RBQT/5
03-Oct-2022
3

BG, 240 x 64 x 14FT (H-1629)



3. MAINDECK [1,428 m²]

Refer to product description.

Surface Preparations

Fresh water wash to remove all dirt and contamination, as necessary. Degrease according to SSPC-SP1 solvent cleaning. Ensure area is clean and dry prior to application.

Part/Spot blast to ISO 8501-1 Sa2 or SSPC-SP6.

Sweep blasting

Product	Paint Type	Colour	Sales Code	Volume Solids (%)	Coats	DFT (µm)	WFT (µm)	PSR (m ² /lt)	Overcoating 30°C		Thinner	Volume (lt)
									Min	Max		
Interbond 201	Epoxy Primer/Finish	Black	KDY999/KDA100	74	FC	125	169	4.61	5hrs	6wks	GTA220	309.80
						125	169					309.80

4. SUPPORT BEAM [290 m²]

Refer to product description.

Surface Preparations

Fresh water wash to remove all dirt and contamination, as necessary. Degrease according to SSPC-SP1 solvent cleaning. Ensure area is clean and dry prior to application.

Part/Spot blast to ISO 8501-1 Sa2 or SSPC-SP6.

Sweep blasting

Product	Paint Type	Colour	Sales Code	Volume Solids (%)	Coats	DFT (µm)	WFT (µm)	PSR (m ² /lt)	Overcoating 30°C		Thinner	Volume (lt)
									Min	Max		
Intertuf 262	Epoxy Anticorrosive	Red	KHA303/KHA062	73	FC	125	171	4.50			GTA220	64.40
Interthane 990	Polyurethane Finish	Black	PHY999/PHA046	57	FC	60	105	7.32	Shrs	ext.	GTA056, GTA713, GTA733	39.60
						185	276					104.00

Marine Coatings

Unless otherwise agreed in writing, all products supplied and technical advice given by us are subject to our standard terms and conditions of sale. Please note that a surcharge may be applied to the prices listed, in which case this will be notified to you by your International Paint representative. In the event that supplies are made and technical advice is given by one of our associated companies then such supplies and technical advice shall be subject to the standard terms of sale of that company, a copy of which is available upon request.

IDVH1-3JIT-RBQT/5

03-Oct-2022

AkzoNobel

BG. 240 x 64 x 14FT (H-1629)



5. CHAIN LOCKER [50 m²]

Refer to product description.

Surface Preparations

Fresh water wash to remove all dirt and contamination, as necessary. Degrease according to SSPC-SP1 solvent cleaning. Ensure area is clean and dry prior to application.

Part/Spot blast to ISO 8501-1 Sa2 or SSPC-SP6.

Sweep blasting

Product	Paint Type	Colour	Sales Code	Volume Solids (%)	Coats	DFT (µm)	WFT (µm)	PSR (m ² /lt)	Overcoating 30°C		Thinner	Volume (lt)
									Min	Max		
Interbond 201	Epoxy Primer/Finish	Black	KDY999/KDA100	74	FC	100	135	5.70	5hrs	6wks	GTA220	8.80
						100	135					8.80

6. CHAIN (BAN DAPRA) [40 m²]

Refer to product description.

Surface Preparations

Fresh water wash to remove all dirt and contamination, as necessary. Degrease according to SSPC-SP1 solvent cleaning. Ensure area is clean and dry prior to application.

Part/Spot blast to ISO 8501-1 Sa2 or SSPC-SP6.

Sweep blasting

Product	Paint Type	Colour	Sales Code	Volume Solids (%)	Coats	DFT (µm)	WFT (µm)	PSR (m ² /lt)	Overcoating 30°C		Thinner	Volume (lt)
									Min	Max		
Interbond 201	Epoxy Primer/Finish	Black	KDY999/KDA100	74	FC	100	135	5.70	5hrs	6wks	GTA220	7.00
						100	135					7.00

Marine Coatings

Unless otherwise agreed in writing, all products supplied and technical advice given by us are subject to our standard terms and conditions of sale. Please note that a surcharge may be applied to the prices listed, in which case this will be notified to you by your International Paint representative. In the event that supplies are made and technical advice is given by one of our associated companies then such supplies and technical advice shall be subject to the standard terms of sale of that company, a copy of which is available upon request

IDVH1-3JIT-RBQT/5
03-Oct-2022
5

BG. 240 x 64 x 14FT (H-1629)



7. MARKING [20 m²]

Refer to product description.

Surface Preparations

Fresh water wash to remove all dirt and contamination, as necessary. Degrease according to SSPC-SP1 solvent cleaning. Ensure area is clean and dry prior to application.

Part/Spot blast to ISO 8501-1 Sa2 or SSPC-SP6.

Sweep blasting

Product	Paint Type	Colour	Sales Code	Volume Solids (%)	Coats	DFT (µm)	WFT (µm)	PSR (m ² /lt)	Overcoating 30°C		Thinner	Volume (lt)
									Min	Max		
Interlac 665	Alkyd Finish	White	CLB000	48	FC	50	104	7.39	24hrs	ext.	GTA004	2.70
						50	104					2.70

Marine Coatings

Unless otherwise agreed in writing, all products supplied and technical advice given by us are subject to our standard terms and conditions of sale. Please note that a surcharge may be applied to the prices listed, in which case this will be notified to you by your International Paint representative. In the event that supplies are made and technical advice is given by one of our associated companies then such supplies and technical advice shall be subject to the standard terms of sale of that company, a copy of which is available upon request.

IDVH1-3JIT-RBQT/5
03-Oct-2022
6
BG. 240 x 64 x 14FT (H-1629)



Interspec

Thinners			
Product	Colour	Sales Code	Volume (lt)
International		GTA004	30.00
International		GTA220	140.00
International		GTA733	15.00
Total			185.00

Marine Coatings

Unless otherwise agreed in writing, all products supplied and technical advice given by us are subject to our standard terms and conditions of sale. Please note that a surcharge may be applied to the prices listed, in which case this will be notified to you by your International Paint representative. In the event that supplies are made and technical advice is given by one of our associated companies then such supplies and technical advice shall be subject to the standard terms of sale of that company, a copy of which is available upon request.

IDVH1-3JJT-RBQT/5
03-Oct-2022
7
BG. 240 x 64 x 14FT (H-1629)





Interspec

Product List					
Product	Colour	Sales Code	VOC (g/l)	Volume Solids (%)	Volume (lt)
Interbond 201	Black	KDY999/KDA100	279	74	340.00
Interclene 145	Red	BCA300	427	52	280.00
Intergard 263	Light Grey	FAJ034/FAA262	445	57	360.00
Interlac 665	White	CLB000	420	48	5.00
Interthane 990	Black	PHY999/PHA046	420	57	120.00
Intertuf 262	Red	KHA303/KHA062	279	73	700.00
Total					1,805.00

Thinners					
Product	Colour	Sales Code	VOC (g/l)	Volume Solids (%)	Volume (lt)
International		GTA004	—	—	30.00
International		GTA220	—	—	140.00
International		GTA733	—	—	15.00
Total					185.00

Total volume (lt): 1,990.00

Marine Coatings

Unless otherwise agreed in writing, all products supplied and technical advice given by us are subject to our standard terms and conditions of sale. Please note that a surcharge may be applied to the prices listed, in which case this will be notified to you by your International Paint representative. In the event that supplies are made and technical advice is given by one of our associated companies then such supplies and technical advice shall be subject to the standard terms of sale of that company, a copy of which is available upon request

IDVH1-3jJT-RBQ7/5

03-Oct-2022

8

BG. 240 x 64 x 14FT (H-1629)

AkzoNobel



Terms and Conditions

This confidential document is for the use of the above named client and its contents should not be reproduced or transmitted without prior written permission from International Paint. The information is given in good faith and attention to the following statement :

The information given in this report is not intended to be exhaustive and any person using any products for any purpose other than that specifically recommended in this report without first obtaining written confirmation from us as to the suitability of the product for the intended purpose does so at his own risk. Any warranty, if given, or specific Terms & Conditions of Sale are contained in International Paints Terms and Conditions of Sale, a copy of which can be obtained on request. Whilst we endeavour to ensure that all advice we give about the product (whether in this report or otherwise) is correct we have no control over either the quality or condition of the substrate or the many factors affecting the use and application of this product. Therefore, unless we specifically agree in writing to do so, we do not accept any liability whatsoever for howsoever arising for the performance of our products or for any loss or damage (other than death or personal injury resulting from our negligence) arising out of the use of the product. The information contained in this report is liable to modification from time to time in the light of experience and our policy of continuous product development.

It is the user's responsibility to check that upto date product data sheets are obtained prior to using the products and that local environmental controls that may be in force are observed when using any of our products.

Health & Safety

Products referred to in this report are intended for use only by professional applicators in industrial situations in accordance with the advice given on our Technical Datasheetst, the Material Safety Data Sheet and the container(s), and should not be used without reference to the Material Safety Data Sheet (MSDS).

All work involving the application and use of this product should be performed in compliance with all relevant national Health, Safety & Environment standards and regulations.

In the event welding or flame cutting is performed on metal coated with this product, dust and fumes will be emitted which will require the use of appropriate personal protective equipment and adequate local exhaust ventilation.

If in doubt regarding the suitability of use of this product, consult International Paint for further advice.

Marine Coatings

Unless otherwise agreed in writing, all products supplied and technical advice given by us are subject to our standard terms and conditions of sale. Please note that a surcharge may be applied to the prices listed, in which case this will be notified to you by your International Paint representative. In the event that supplies are made and technical advice is given by one of our associated companies then such supplies and technical advice shall be subject to the standard terms of sale of that company, a copy of which is available upon request

IDVH1-3JIT-RBQT/5

03-Oct-2022

9

BG. 240 x 64 x 14FT (H-1629)



TERMS AND CONDITIONS OF SALE

1. **SCOPE:** As used herein, "AkzoNobel" means the AkzoNobel entity identified above; "Buyer" means the purchaser of Products from AkzoNobel and "Products" means any and all goods sold by AkzoNobel to Buyer. Unless a detailed product sales agreement is in place between AkzoNobel and Buyer covering the sale of the Products, all Products sold or otherwise provided by AkzoNobel are sold or provided exclusively on the basis of these Terms and Conditions of Sale. No differing or supplemental terms or conditions shall be applicable unless expressly agreed to by AkzoNobel in writing.
2. **OFFER / ACCEPTANCE:** A quotation from AkzoNobel does not constitute an offer but an invitation to Buyer to make an offer. In all cases Buyer's offer shall be deemed based on these Terms and Conditions of Sale. An agreement comes into effect only when AkzoNobel accepts Buyer's offer.
3. **DELIVERY / TRANSFER OF RISK:** Delivery terms shall be interpreted in accordance with the latest INCOTERMS valid at the date the order is accepted. Unless otherwise agreed to by AkzoNobel in writing the delivery term is EXW and risk of loss in the Products will transfer to Buyer upon tender of the Products to Buyer or the carrier at AkzoNobel's shipping facility.
4. **QUANTITY VARIATIONS:** Buyer will pay for the quantity delivered and may not reject any delivery of Product on the grounds of variation of quantity where such variation is not more than 10% of the quantity ordered.
5. **PRICE AND PAYMENT:** Unless otherwise agreed by the Parties, the price for the Products will be the price quoted by AkzoNobel. All prices quoted by AkzoNobel are exclusive of value added tax and any other tax that may apply in respect of the Products. AkzoNobel will issue invoices to Buyer for all Products sold to Buyer. Buyer shall pay these invoices within terms of payment days from the invoice date in the currency indicated on the invoice at the address of AkzoNobel indicated on the invoice. Buyer may not withhold payment of any amount due to AkzoNobel because of any set-off, counter-claim, abatement or similar deduction. Upon demand Buyer will immediately reimburse AkzoNobel for any and all costs including fees for collection agencies and attorneys incurred or expended by AkzoNobel to collect any amounts due from Buyer. Late payments shall automatically and without prior notice, bear interest at an annual rate equivalent to the applicable legal interest rate of the Bank of Indonesia plus four per cent (4%) for the relevant period, calculated from the due date, then and without prejudice to the exercise of any other rights or remedies which may be available to it and without incurring any penalties or liabilities. AkzoNobel shall be entitled to suspend performance of its obligations under the contract, following written notification to the Buyer, until payment in full of the outstanding amounts in respect of the supply of the Products actually delivered and rendered and not paid for.
6. **RETENTION OF TITLE:** AkzoNobel shall retain ownership of the Products until the Buyer has paid to AkzoNobel all sums which are or which become due to AkzoNobel from the Buyer on any account.
7. **WARRANTY / BUYER'S RIGHTS:** AkzoNobel warrants to Buyer that at the time of transfer of risk of loss the Products conform to AkzoNobel's standard Product specifications or such other specifications as AkzoNobel and Buyer have expressly agreed to in writing (the "Specifications"). THIS WARRANTY IS THE SOLE WARRANTY GIVEN BY AKZONOBEL. AKZONOBEL MAKES NO OTHER WARRANTIES, EXPRESS OR IMPLIED, ORAL OR WRITTEN, WITH RESPECT TO THE PRODUCTS, THE APPLICATION OR USE THEREOF, OR OTHERWISE, INCLUDING THE IMPLIED WARRANTIES OF MERCHANTABILITY OR FITNESS FOR A PARTICULAR PURPOSE OR NON-INFRINGEMENT, EACH OF WHICH IS SPECIFICALLY DISCLAIMED. In the event Products do not comply with the foregoing warranty, AkzoNobel will, at its option, repair or replace such Products or refund the Price of the Products and, having done so, will have no further liability. Buyer must notify AkzoNobel of any claim if Products do not comply with the foregoing warranty within seven (7) days after Buyer becomes aware of such claim but in no event later than thirty (30) days after delivery of the Product to Buyer. Buyer's failure to notify AkzoNobel of any such claim within the time set out in the preceding sentence will constitute a waiver by Buyer of such claim. AkzoNobel makes no warranty of any kind with respect to any services provided to Buyer and shall have no liability with respect to such services.
8. **LIMITATION OF LIABILITY:** AkzoNobel will not be liable for any loss or damage caused by Buyer's failure to exercise effective quality control or the failure to store, use or otherwise handle the Products as advised or in accordance with instructions provided by AkzoNobel or industry standards. AKZONOBEL WILL NOT BE LIABLE TO BUYER, WHETHER IN CONTRACT, TORT (INCLUDING NEGLIGENCE), BREACH OF STATUTORY DUTY OR OTHERWISE FOR ANY LOSS OF PROFIT, LOSS OF BUSINESS, DIMINUTION IN VALUE, OR DEPLETION OF GOODWILL OR ANY INDIRECT, INCIDENTAL, SPECIAL, EXEMPLARY, PUNITIVE, OR CONSEQUENTIAL LOSS OR DAMAGE. AKZONOBEL'S AGGREGATE LIABILITY TO BUYER IN RESPECT OF ALL LOSSES ARISING UNDER OR IN CONNECTION WITH THE SUPPLY OF PRODUCTS WILL IN NO WAY EXCEED THE PRICE OF THE PRODUCTS PURCHASED, OR €200,000, WHICHEVER IS LOWER. Nothing in this section will limit or exclude AkzoNobel's liability for any matter in respect of which it is unlawful for AkzoNobel to exclude or restrict its liability.
9. **FORCE MAJEURE:** AkzoNobel will not be liable in any respect for failure to perform its obligations if hindered or prevented, directly or indirectly by war (declared or undeclared), national emergency,

Marine Coatings

Unless otherwise agreed in writing, all products supplied and technical advice given by us are subject to our standard terms and conditions of sale. Please note that a surcharge may be applied to the prices listed, in which case this will be notified to you by your International Paint representative. In the event that supplies are made and technical advice is given by one of our associated companies then such supplies and technical advice shall be subject to the standard terms of sale of that company, a copy of which is available upon request

IDVH1-3JT-RBQ7/5
03-Oct-2022
10
BG_240 x 64 x 14FT (H-1629)



TERMS AND CONDITIONS OF SALE

inadequate transportation facilities, machinery or equipment failure, AkzoNobel's inability to secure materials, supplies, fuel or power for the manufacture of Product on terms and conditions that are acceptable to AkzoNobel, fire, flood, windstorm or other act of God, strike, lockout or other labour dispute, order or act of any government, whether foreign, national or local, whether valid or invalid, or any other cause of like or different kind beyond the reasonable control of AkzoNobel (each a "Force Majeure"). AkzoNobel shall have no obligation to procure any Products from other sources and may allocate its available supply of Products among the members of the AkzoNobel Group (including itself) and their customers, buyers, distributors and resellers on whatever basis AkzoNobel may deem fair and practical. In the event that the duration of a Force Majeure exceeds six (6) months or is reasonably expected to exceed 6 months, AkzoNobel is entitled to withdraw from any obligation it may have to supply the Products to Buyer without the Buyer having any right to compensation.

- 10. **EXPORT CONTROL:** Buyer will not sell, export, re-export, license, transmit, divert or otherwise transfer, directly or indirectly, any Product or any information or technology related to the Product except in accordance with applicable export control laws and regulations, including without limitation the laws of the country where Buyer is resident. Buyer acknowledges that he will (i) take all steps necessary to comply with the above laws and regulations, including obtaining export and other licenses if necessary and (ii) not take any actions that would cause AkzoNobel to be in violation of the above laws.
- 11. **TERMINATION:** An agreement with Buyer to deliver Products on the basis of these Terms and Conditions will not oblige AkzoNobel for the future to take further orders. AkzoNobel will at all times be entitled to end the relationship. Such termination will never entitle Buyer to compensation.
- 12. **LAW AND DISPUTE RESOLUTION.** These Terms and Conditions and all disputes between AkzoNobel and Buyer are governed by the laws of the country and, if applicable, state or province, in which AkzoNobel's address is located, excluding the United Nations Convention of Contracts for the International Sale of Goods and any choice of law rules that direct the application of the law of any other jurisdiction. Any dispute between AkzoNobel and Buyer that the parties are unable to resolve by agreement will be resolved exclusively in the courts having jurisdiction over the subject matter of the dispute located in the city in which AkzoNobel's address is located (or if no such courts exist in such city in such courts as are located closest to such city) and those courts having appellate level review over the decisions and rulings of such courts. Each party consents and agrees to the jurisdiction and venue of such court

Marine Coatings

Unless otherwise agreed in writing, all products supplied and technical advice given by us are subject to our standard terms and conditions of sale. Please note that a surcharge may be applied to the prices listed, in which case this will be notified to you by your International Paint representative. In the event that supplies are made and technical advice is given by one of our associated companies then such supplies and technical advice shall be subject to the standard terms of sale of that company, a copy of which is available upon request

IDVH1-3JIT-RBQT/5
03-Oct-2022
11
BG. 240 x 64 x 14FT (H-1629)





Specification

PT Karya Teknik Utama

KTU 1492 - DECK CARGO BARGE 240'x64'x14'





P.T. Hempel Indonesia
Jalan Raya Sultan Agung Km 27,
Pondok Ungu,
Bekasi 17132
southeast-asia.hempel.com

Tel: +62 218 843 385
Fax: +62 218 840 820
Email: Indonesia.ID@hempel.com



Specification

Customer 15300496 PT Karya Teknik Utama Tg Uncang, Jln Bridgen Katamso
batam Riau Indonesia

IQS Ref. no.:	QU0000155036
Date:	06 Aug 2022
Prepared by:	Ariyanto Salim
Place of Application:	Global
Place of Delivery:	Indonesia
Delivery Port:	Batam

Project:	KTU 1492 - DECK CARGO BARGE 240'x64'x14'
Ref. no.:	

Abbreviations used:

d: Day(s)
h: Hour(s)
m: Minute(s)
FC: Full Coat
TU: Touch up
SC: Stripe coat
DFT: Dry film thickness
TSR: Theoretical spreading rate
RH: Relative humidity
CF: Consumption factor
LF: Loss factor
MC: Mist Coat
TBA: To be announced

Specification notes:

Always read the Labels, Safety Data Sheets, Product Data Sheets and available Application Instructions before use.

The data, specifications, directions and recommendations (hereinafter "Information") given in this painting specification are based upon test results obtained under controlled or specifically defined conditions and said Information is correct to the best of our knowledge. The User must satisfy itself that it is appropriate to use the Product in accordance with the Information in the actual conditions under which the Product is intended to be used, and the Manufacturer and Seller do not guarantee the accuracy, completeness or appropriateness of the Information when the Product is used in those conditions. The provisions regarding Hempel's liability in its applicable conditions for sale, delivery and service shall apply to any and all claims arising out of or in connection with the use of the products recommended above, overleaf or otherwise.



P.T. Hempel Indonesia
Jalan Raya Sultan Agung Km 27,
Pondok Ungu,
Bekasi 17132
southeast-asia.hempel.com

Tel: +62 218 843 385
Fax: +62 218 840 820
Email: Indonesia.id@hempel.com



Specification

Project:	KTU 1492 - DECK CARGO BARGE 240'x64'x14'		
Ref. no.:			
Area	Severe		
Description:	TOPSIDE AND EX. BULWARK - BLACK		
Size:	685 m ²	Environment	Severe
Substrate:	Carbon Steel		
			Standard

Treated Area%	Product		Shade		Film Thickness (mic)		Application Method	TSR (m ² /ltr)	CF	Est vol. LTR
	Name	No.	Name	No.	Wet	Dry				
100 - FC	Hempel's 15ASG	15ASG	Red Brown RAL 8012	67120	225	150	Airless Spraying	4,73	1,30	188,13
100 - FC	Hempel's 15ASG	15ASG	Jet Black RAL 9005	19990	150	100	Airless Spraying	7,10	1,30	125,42
100 - FC	Hempathane Topcoat 55210	55210	Jet Black RAL 9005	19990	100	50	Airless Spraying	10,00	1,30	89,05
					Total DFT	300			Est. total	402,61

Overcoating intervals

RH%	DFT (µm)	Product						
		-10°C / 14°F	0°C / 32°F	5°C / 41°F	10°C / 50°F	20°C / 68°F	30°C / 86°F	40°C / 104°F
		Min -Max	Min -Max	Min -Max	Min -Max	Min -Max	Min -Max	Min -Max
	150.0	Hempel's 15ASG 15ASG						
-		34h-90d	17h-90d	13h-68.5d	7.5h-42d	4h-21d	3h-16d	115m-10.5d
	100.0	Hempel's 15ASG 15ASG						
-		21h-27d	11h-13.5d	7.5h-10d	4.5h-6d	2.5h-72h	105m-54h	70m-36h
	50.0	Hempathane Topcoat 55210 55210						



P.T. Hempel Indonesia
Jalan Raya Sultan Agung Km 27,
Pondok Ungu,
Bekasi 17132
southeast-asia.hempel.com

Tel: +62 218 843 385
Fax: +62 218 840 820
Email: Indonesia.id@hempel.com



Specification

Project:	KTU 1492 - DECK CARGO BARGE 240'x64'x14'		
Ref. no.:			
Area	Severe		
Description:	TOPSIDE AND EX. BULWARK - BLACK		
Size:	685 m ²	Environment	Severe
Substrate:	Carbon Steel		Standard

Surface Preparation:

- Oil and grease etc. to be removed by emulsion cleaning. Entire area to be (high pressure) fresh water cleaned in order to remove salts and other contaminants. When the surface is dry: Abrasive blasting to minimum Sa 2 according to ISO 8501-1:2007.

Remarks:

- Further reference to be made on the PDS of the Hempel product specified.
- Normal good painting practice must be followed throughout the entire painting procedure.
- The surface must be completely clean and dry with a temperature 3°C/5°F above the dew point to avoid condensation.
- Before recoating after exposure in contaminated environments, clean the surface thoroughly by (high pressure) fresh water hosing and allow to dry.
- If the maximum recoating interval is exceeded, roughening of the surface is necessary to ensure intercoat adhesion.



P.T. Hempel Indonesia
Jalan Raya Sultan Agung Km 27,
Pondok Ungu,
Bekasi 17132
southeast-asia.hempel.com

Tel: +62 218 843 385
Fax: +62 218 840 820
Email: indonesia.id@hempel.com



Specification

Project:	KTU 1492 - DECK CARGO BARGE 240'x64'x14'		
Ref. no.:			
Area	Immersed		
Description:	UNDERWATER AREAS		
Size:	1.400 m ²	Environment	Immersed
Substrate:	Carbon Steel	Standard	

Treated Area%	Product		Shade		Film Thickness (mic)		Application Method	TSR (m ² /litr)	CF	Est vol. LTR
	Name	No.	Name	No.	Wet	Dry				
100 - FC	Hempel's 15ASG	15ASG	Red Brown RAL 8012	67120	300	200	Airless Spraying	3,55	1,30	512,68
100 - FC	Hempadur 47182	47182	Light khaki brown	25150	100	50	Airless Spraying	12,40	1,30	146,77
100 - FC	Hempel's Antifouling Classic 76110	76110	Red Brown	50000	200	100	Airless Spraying	5,40	1,30	337,04
Total DFT					350				Est. total	996,49

Overcoating Intervals

RH%	DFT (µm)	Product						
		-10°C / 14°F	0°C / 32°F	5°C / 41°F	10°C / 50°F	20°C / 68°F	30°C / 86°F	40°C / 104°F
		Min -Max	Min -Max	Min -Max	Min -Max	Min -Max	Min -Max	Min -Max
	200.0	Hempel's 15ASG 15ASG						
-		50h-90d	25h-63d	18h-45.5d	12h-28d	5.5h-14d	4h-10.5d	3h-7d
	50.0	Hempadur 47182 47182						
-		41h-31.5d	21h-16d	15h-11.5d	9h-7d	4.5h-3.5d	3.5h-63h	2.5h-42h
	100.0	Hempel's Antifouling Classic 76110 76110						



P.T. Hempel Indonesia
Jalan Raya Sultan Agung Km 27,
Pondok Ungu,
Bekasi 17132
southeast-asia.hempel.com

Tel: +62 218 843 385
Fax: +62 218 840 820
Email: indonesia.id@hempel.com



Specification

Project:	KTU 1492 - DECK CARGO BARGE 240'x64'x14'		
Ref. no.:			
Area	Immersed		
Description:	UNDERWATER AREAS		
Size:	1.400 m ²	Environment	Immersed
Substrate:	Carbon Steel	Standard	

Surface Preparation:

- Oil and grease etc. to be removed by emulsion cleaning. Entire area to be (high pressure) fresh water cleaned in order to remove salts and other contaminants. When the surface is dry: Abrasive blasting to minimum Sa 2 according to ISO 8501-1:2007.

Remarks:

- Hempadur 47182 used KTU's stock



P.T. Hempel Indonesia
 Jalan Raya Sultan Agung Km 27,
 Pondok Ungu,
 Bekasi 17132
 southeast-asia.hempel.com
 Tel: +62 218 843 385
 Fax: +62 218 840 820
 Email: Indonesia.id@hempel.com



Specification

Project:	KTU 1492 - DECK CARGO BARGE 240'x64'x14'		
Ref. no.:			
Area	Severe		
Description:	MAINDECK, INTERNAL BULWARK AND BOLLARD		
Size:	1.350 m ²	Environment	Severe
Substrate:	Carbon Steel		
			Standard

Treated Area%	Product		Shade		Film Thickness (mic)		Application Method	TSR (m ² /ltr)	CF	Est vol. LTR
	Name	No.	Name	No.	Wet	Dry				
100 - FC	Hempel's 15ASG	15ASG	Jet Black RAL 9005	19990	200	125	Airless Spraying	5,68	1,30	308,98
					Total DFT				Est. total	308,98

Overcoating intervals

RH%	DFT (µm)	Product						
		-10°C / 14°F	0°C / 32°F	5°C / 41°F	10°C / 50°F	20°C / 68°F	30°C / 86°F	40°C / 104°F
		Min -Max	Min -Max	Min -Max	Min -Max	Min -Max	Min -Max	Min -Max
	125.0	Hempel's 15ASG 15ASG						



P.T. Hempel Indonesia
Jalan Raya Sultan Agung Km 27,
Pondok Ungu,
Bekasi 17132
southeast-asia.hempel.com

Tel: +62 218 843 385
Fax: +62 218 840 820
Email: indonesia.id@hempel.com



Specification

Project:	KTU 1492 - DECK CARGO BARGE 240'x64'x14'		
Ref. no.:			
Area	Severe		
Description:	MAINDECK, INTERNAL BULWARK AND BOLLARD		
Size:	1.350 m ²	Environment	Severe
Substrate:	Carbon Steel		Standard

Surface Preparation:

- Oil and grease etc. to be removed by emulsion cleaning. Entire area to be (high pressure) fresh water cleaned in order to remove salts and other contaminants. When the surface is dry: Abrasive blasting to minimum Sa 2 according to ISO 8501-1:2007.

Remarks:

DRAFT



P.T. Hempel Indonesia
Jalan Raya Sultan Agung Km 27,
Pondok Ungu,
Bekasi 17132
southeast-asia.hempel.com

Tel: +62 218 843 385
Fax: +62 218 840 820
Email: Indonesia.id@hempel.com



Specification

Project:	KTU 1492 - DECK CARGO BARGE 240'x64'x14'			
Ref. no.:				
Area	Severe			
Description:	STANCION			
Size:	410 m ²	Environment	Severe	Standard
Substrate:	Carbon Steel			

Treated Area%	Product		Shade		Film Thickness (mic)		Application Method	TSR (m ² /litr)	CF	Est vol. LTR
	Name	No.	Name	No.	Wet	Dry				
100 - FC	Hempel's 15ASG	15ASG	Jet Black RAL 9005	19990	150	100	Airless Spraying	7,10	1,30	75,07
100 - FC	Hempathane Topcoat 55210	55210	Jet Black RAL 9005	19990	100	50	Airless Spraying	10,00	1,30	53,30
					Total DFT	150			Est. total	128,37

Overcoating Intervals

RH%	DFT (µm)	Product						
		-10°C / 14°F	0°C / 32°F	5°C / 41°F	10°C / 50°F	20°C / 68°F	30°C / 86°F	40°C / 104°F
		Min -Max	Min -Max	Min -Max	Min -Max	Min -Max	Min -Max	Min -Max
	100.0	Hempel's 15ASG 15ASG						
-		21h-27d	11h-13.5d	7.5h-10d	4.5h-6d	2.5h-72h	105m-54h	70m-36h
	50.0	Hempathane Topcoat 55210 55210						



P.T. Hempel Indonesia
Jalan Raya Sultan Agung Km 27,
Pondok Ungu,
Bekasi 17132
southeast-asia.hempel.com

Tel: +62 218 843 385
Fax: +62 218 840 820
Email: Indonesia.id@hempel.com



Specification

Project:	KTU 1492 - DECK CARGO BARGE 240'x64'x14'			
Ref. no.:				
Area	Severe			
Description:	STANCION			
Size:	410 m ²	Environment	Severe	Standard
Substrate:	Carbon Steel			

Surface Preparation:

- Oil and grease etc. to be removed by emulsion cleaning. Entire area to be (high pressure) fresh water cleaned in order to remove salts and other contaminants. When the surface is dry: Abrasive blasting to minimum Sa 2 according to ISO 8501-1:2007.

Remarks:

DRAFT



Product Information Summary

Project:	KTU 1492 - DECK CARGO BARGE 240'x64'x14'
Ref. no.:	

Table 1

Product		Shade		VS%	Base no.	Curing agent no.(s)	Mix ratio	Pot life hrs at 20°C
Name	No.	Name	No.					
Hempel's 15ASG	15AS G	Red Brown RAL 8012	67120	71	15AS9	950SG	3:1	2
Hempel's 15ASG	15AS G	Jet Black RAL 9005	19990	71	15AS9	950SG	3:1	2
Hempel's 15ASG	15AS G	Red Brown RAL 8012	67120	71	15AS9	950SG	3:1	2
Hempel's 15ASG	15AS G	Jet Black RAL 9005	19990	71	15AS9	950SG	3:1	2
Hempadur 47182	47182	Light khaki brown	25150	62	47188	98470	7:1	2
Hempathane Topcoat 55210	55210	Jet Black RAL 9005	19990	50	55219	95370	7:1	4
Hempel's Antifouling Classic 76110	76110	Red Brown	50000	54	-	-		0

Table 2

Product		Thinner no.	Flash point °C	Dry to touch hrs at 20°C	Application restrictions	
Name	No.				Min temp °C	Max RH%
Hempathane Topcoat 55210	55210	08080	33	*	-10	85
Hempel's 15ASG	15AS G	08450	35	*	-10	-
Hempel's Antifouling Classic 76110	76110	08080	37	*	-10	-
Hempadur 47182	47182	08450	28	*	-5	-

* See PDS

Total estimated project volume

Product		Shade		Estimated volume LTR
Name	No.	Name	No.	
Hempel's Thinner 08080	08080	Transparent	00000	47,94
Hempel's Thinner 08450	08450	Transparent	00000	150,38
Hempel's 15ASG	15ASG	Red Brown	67120	700,81
Hempel's 15ASG	15ASG	Jet Black	19990	509,47
Hempel's 15ASG	15ASG	Red Brown	67120	40,00
Hempel's 15ASG	15ASG	Jet Black	19990	40,00
Hempadur 47182	47182	Light khaki brown	25150	146,77
Hempathane Topcoat 55210	55210	Jet Black	19990	142,35
Hempel's Antifouling Classic 76110	76110	Red Brown	50000	337,04
GRAND TOTAL				2.114,77



hempel.com

For more information please contact:

Ariyanto Salim

Direct tel: 62218843385

Email: ARSA@hempel.com

As a world-leading supplier of trusted coating solutions, Hempel is a global company with strong values, working with customers in the protective, marine, decorative, container and yacht industries. Hempel factories, R&D centres and stock points are established in every region. Across the globe, Hempel's coatings protect surfaces, structures and equipment. They extend asset lifetimes, reduce maintenance costs and make homes and workplaces safer and more colourful. Hempel was founded in Copenhagen, Denmark in 1915. It is proudly owned by the Hempel Foundation, which ensures a solid economic base for the Hempel Group and supports cultural, social, humanitarian and scientific purposes around the world.

P.T. Hempel Indonesia
Jalan Raya Sultan Agung Km 27,
Pondok Ungu,
Bekasi 17132

Tel: +62 218 843 385
Fax: +62 218 840 820
Email: Indonesia.id@hempel.com