

## DAFTAR PUSTAKA

- Afshar, E., Yarnia, M., Bagherzadeh, A., & Mirshekari. (2010). The Effect Of Crops Cultivation On Soil Erosion Indices Based On Impelero Model in Northeast Iran. *Applied Ecology and Environmental Research*, December. <https://doi.org/10.15666/aeer/1601>
- Alie, M. E. R. (2015). *Kajian Erosi Lahan Pada DAS Dawas Kabupaten Musi Banyuasin-Sumatera Selatan*. Sriwijaya University.
- Arifin, M. (2010). Kajian Sifat Fisik Tanah Dan Berbagai Penggunaan Lahan Dalam Hubungannya Dengan Pendugaan Erosi Tanah. *Mapeta*, 12(2).
- Arsyad, S. (2000). *Konservasi Tanah dan Air*. Bogor (ID): IPB Press.
- Arsyad, S. (2010). *Konservasi Tanah dan Air*. Institut Pertanian Bogor, 496.
- Ashari, A. (2013). Kajian Tingkat Erodibilitas Beberapa Jenis Tanah Di Pegunungan Baturagung Desa Putat Dan Nglangeran Kecamatan Patuk Kabupaten Gunungkidul. *Informasi*, 39(2), 15–31.
- Belasri, A., Lakhouili, A., & Iben Halima, O. (2017). Soil Erodibility Mapping and Its Correlation with Soil Properties of Oued El Makhazine watershed, Morocco. *Journal of Materials and Environmental Science*, 8(9), 3208–3215.
- Campo, J., Gimeno-García, E., Andreu, V., González-Pelayo, O., & Rubio, J. L. (2014). Cementing Agents Involved in The Macro- and Microaggregation of A Mediterranean Shrubland Soil Under Laboratory Heating. *Catena*, 113, 165–176. <https://doi.org/10.1016/j.catena.2013.10.002>
- Daniel, M., Woldeamlak, B., & Lal, R. (2015). *The Danger of Soil Erosion Due to Current and Potential Climate Change Causing the Loss of Soil Organic Matter in the Upper Blue Nile River Valley*. 25(1), 137–163.
- Das, S., Deb, P., Bora, P. K., & Katre, P. (2020). Comparison of Rusle and Mmf Soil Loss Models and Evaluation of Catchment Scale Best Management Practices For a Mountainous Watershed in India. *Sustainability (Switzerland)*, 13(1), 1–22. <https://doi.org/10.3390/su13010232>
- Emadi, M., Baghernejad, M., & Memarian, H. R. (2009). Effect of Land-use Change on Soil Fertility Characteristics Within Water-Stable Aggregates of Two Cultivated Soils in Northern Iran. *Land Use Policy*, 26(2), 452–457. <https://doi.org/10.1016/j.landusepol.2008.06.001>
- Fauzi, R. M., & Maryono, M. (2016). Kajian Erosi Dan Hasil Sedimen Untuk Konservasi Lahan DAS Kreo Hulu. *Jurnal Pembangunan Wilayah & Kota*, 12(4), 429. <https://doi.org/10.14710/pwk.v12i4.13508>





- Gee, G. W., & Bauder, J. W. (1986). Particle-size Analysis. In *Methods of Soil Analysis* (pp. 383–411). <https://doi.org/10.2136/sssabookser5.1.2ed.c15>
- Huang, T. C. C., & Lo, K. F. A. (2015). Effects of Land use Change on Sediment and Water Yields in yang Ming Shan National Park, Taiwan. *Environments - MDPI*, 2(1), 32–42. <https://doi.org/10.3390/environments2010032>
- Kadlec, V., Holubík, O., Procházková, E., Urbanová, J., & Tippl, M. (2012). Soil Organic Carbon Dynamics and its Influence on The Soil Erodibility Factor. *Soil and Water Research*, 7(3), 97–108. <https://doi.org/10.17221/3/2012-swr>
- Kalaati, I., Ramlan, R., & Rahman, A. (2019). Tingkat Erodibilitas Tanah Pada Beberapa Tingkat Kemiringan Lahan Di Desa Labuan Toposo Kecamatan Labuan Kabupaten Donggala. *Agrotekbis: Jurnal Ilmu Pertanian*. <http://jurnal.faperta.untad.ac.id/index.php/agrotekbis/article/view/397>
- Klute, A., & Dirksen, C. (1986). Hydraulic Conductivity and Diffusivity: Laboratory Methods. In *Methods of Soil Analysis* (pp. 687–734). <https://doi.org/10.2136/sssabookser5.1.2ed.c28>
- Lambin, E. F., & Geist, H. J. (2004). *Causes of Land-Use and Land-Cover Change*.
- Mala, B. K. S., Moniaga, I. L., & Karongkong, H. (2016). Perubahan Tutupan Lahan Terhadap Potensi Bahaya Longsor Dengan Pendekatan Sistem Informasi Geografis Di Kolonodale Kabupaten Morowali Utara. *Ejournal Unstrad*, 4(3), 155–166. <https://doi.org/10.35793/sp.v4i3.17644>
- Martinez-Mena, M., Lopez, J., Almagro, M., Boix-Fayos, C., & Albaladejo, J. (2008). Effect of Water Erosion and Cultivation on The Soil Carbon Stock in a Semiarid Area of South-East Spain. *Soil and Tillage Research*, 99(1), 119–129. <https://doi.org/10.1016/j.still.2008.01.009>
- Morgan, R. P. C. (2004). Vegetative-Based Technologies for Erosion Control. *Eco-and Ground Bio-Engineering: The Use of Vegetation to Improve Slope Stability*, 265–272. [https://doi.org/10.1007/978-1-4020-5593-5\\_26](https://doi.org/10.1007/978-1-4020-5593-5_26)
- Mulyono, A., Lestiana, H., & Rusydi, A. (2019). Permeabilitas Tanah Berbagai Tipe Penggunaan Lahan di Tanah Aluvial Pesisir DAS Cimanuk, Indramayu. *Jurnal Ilmu Lingkungan*, 17. <https://doi.org/10.14710/jil.17.1.1-6>
- Novara, A., Keesstra, S., Cerdà, A., Pereira, P., & Gristina, L. (2016). Understanding The Role of Soil Erosion on CO<sub>2</sub>-C Loss Using <sup>13</sup>C Isotopic Signatures in Abandoned Mediterranean Agricultural Land. *Science of The Total Environment*, 550, 330–336. <https://doi.org/10.1016/j.scitotenv.2016.01.095>
- Ostovari, Y., Ghorbani-Dashtaki, S., Bahrami, H.-A., Naderi, M., Dematte, J. A. M., & Kerry, R. (2016). Modification of The USLE K Factor for Soil Erodibility Assessment on Calcareous Soils in Iran. *Geomorphology*, 273, 385–395. <https://doi.org/https://doi.org/10.1016/j.geomorph.2016.08.003>

- Ou, R., J, S., B, V., N, T., Elango, S., Manivel, R., & Jeyasuresh, S. (2017). Organic Food and Health: A Systematic Review. *Journal of Community Medicine & Health Education*, 07. <https://doi.org/10.4172/2161-0711.1000532>
- Pedoman Penyusunan Pola Rehabilitasi Lahan dan Konservasi Tanah. (1986). *Beranda Lainnya Pedoman Penyusunan Pola Rehabilitas Lahan dan Konservasi Tanah*.
- Poch, R. M., & AntúNez, M. (2010). Aggregate Development and Organic Matter Storage in Mediterranean Mountain Soils. *Pedosphere*, 20(6), 702–710. [https://doi.org/10.1016/S1002-0160\(10\)60060-4](https://doi.org/10.1016/S1002-0160(10)60060-4)
- Purwantara, S., & Nursa'ban, M. (2012). Pengukuran Tingkat Bahaya Bencana Erosi Di Kecamatan Kokap. *Jurnal Geomedia*, 10(1), 111–128.
- Putra, R. Y. A., Sarno, S., Wiharso, D., & Niswati, A. (2017). Pengaruh Pengolahan Tanah Dan Aplikasi Herbisida Terhadap Kandungan Asam Humat Pada Tanah Ultisol Gedung Meneng Bandar Lampung. *Jurnal Agrotek Tropika*, 5(1), 51–56. <https://doi.org/10.23960/jat.v5i1.1847>
- Reza, Widiastuti, T., & Riyono, J. N. (2014). Erodibilitas Tanah (K) Pada Berbagai Tutupan Lahan Di Desa Baru Kecamatan Silat Hilir Kabupaten Kapuas Hulu. *Jurnal Hutan Lestari*, 8(4), 773.
- Shabani, F., Kumar, L., & Esmaeili, A. (2014). Improvement to The Prediction of The USLE K Factor. *Geomorphology*, 204, 229–234. <https://doi.org/10.1016/j.geomorph.2013.08.008>
- Shi, Z.-H., Yan, F.-L., Li, L., Li, Z.-X., & Cai, C.-F. (2010). Interrill Erosion From Disturbed and Undisturbed Samples in Relation to Topsoil Aggregate Stability in Red Soils From Subtropical China. *Catena*, 81(3), 240–248. <https://doi.org/https://doi.org/10.1016/j.catena.2010.04.007>
- Stefano, C. Di, & Ferro, V. (2002). Linking Clay Enrichment and Sediment Delivery Processes. *Biosystems Engineering*, 81(4), 465–479. <https://doi.org/10.1006/bioe.2001.0034>
- Surya, J. A., Nuraini, Y., Tanah, J., Pertanian, F., & Brawijaya, U. (2017). Kajian Porositas Tanah Pada Pemberian Beberapa Jenis Bahan Organik Di Perkebunan Kopi Robusta. *Jurnal Tanah Dan Sumberdaya Lahan*, 4(1), 463–471. <http://jtsl.ub.ac.id>
- Szilassi, P., Jordan, G., van Rompaey, A., & Csillag, G. (2006). Impacts of Historical Land use Changes on Erosion and Agricultural Soil Properties in The Kali Basin at Lake Balaton, Hungary. *Catena*, 68(2–3), 96–108. <https://doi.org/10.1016/j.catena.2006.03.010>

- Tejada, M., & Gonzalez, J. L. (2006). The Relationships Between Erodibility and Erosion in a Soil Treated With Two Organic Amendments. *Handbook of Environmental Chemistry, Volume 5: Water Pollution*, 91(1–2), 186–198. <https://doi.org/10.1016/j.still.2005.12.003>
- Uhland, R. E., & O'neil, A. M. (1951). *Soil Permeability Determination For Use in Soil and Water Conservation*. New York.
- Vaezi, A. R., Eslami, S. F., & Keesstra, S. D. (2018). Interrill Erodibility in Relation to Aggregate Size Class in A Semi-Arid Soil Under Simulated Rainfalls. *CATENA*. <https://api.semanticscholar.org/CorpusID:134416261>
- Wang, B., Zheng, F., Römkens, M. J. M., & Darboux, F. (2013). Soil Erodibility for Water Erosion: A Perspective and Chinese Experiences. *Geomorphology*, 187(May 2020), 1–10. <https://doi.org/10.1016/j.geomorph.2013.01.018>
- Wischmeier, W., & Smith, D. (1978). *USDA Agricultural Handbook: Predicting Rainfall-Induced Erosion Losses*. United States Department of Agriculture .

## LAMPIRAN

### Lampiran 1. Titik pengambilan sampel di Desa Borisallo

Kode sampel	Deskripsi	Gambar
L1T1U1	<ul style="list-style-type: none"> <li>• Penggunaan lahan: belukar</li> <li>• Kemiringan lereng: 0-8%</li> </ul>	
L1T1U2	<ul style="list-style-type: none"> <li>• Penggunaan lahan: belukar</li> <li>• Kemiringan lereng: 0-8%</li> </ul>	
L1T1U3	<ul style="list-style-type: none"> <li>• Penggunaan lahan: belukar</li> <li>• Kemiringan lereng: 0-8%</li> </ul>	
L1T2U1	<ul style="list-style-type: none"> <li>• Penggunaan lahan: hutan</li> <li>• Kemiringan lereng: 0-8%</li> </ul>	

L1T2U2

- Penggunaan lahan: hutan
- Kemiringan lereng: 0-8%



L1T2U3

- Penggunaan lahan: hutan
- Kemiringan lereng: 0-8%



L1T3U1

- Penggunaan lahan: pertanian lahan kering
- Kemiringan lereng: 0-8%



L1T3U2

- Penggunaan lahan: pertanian lahan kering
- Kemiringan lereng: 0-8%





---

L1T3U3

- Penggunaan lahan: pertanian lahan kering
- Kemiringan lereng: 0-8%



---

L2T1U1

- Penggunaan lahan: belukar
- Kemiringan lereng: 15-25%



---

L2T1U2

- Penggunaan lahan: belukar
- Kemiringan lereng: 15-25%



---

L2T1U3

- Penggunaan lahan: belukar
- Kemiringan lereng: 15-25%



---

L2T2U1

- Penggunaan lahan: hutan
- Kemiringan lereng: 15-25%



---

L2T2U2

- Penggunaan lahan: hutan
- Kemiringan lereng: 15-25%



---

L2T2U3

- Penggunaan lahan: hutan
- Kemiringan lereng: 15-25%



---

L2T3U1

- Penggunaan lahan: pertanian lahan kering
- Kemiringan lereng: 15-25%





L2T3U2

- Penggunaan lahan: pertanian lahan kering
- Kemiringan lereng: 15-25%



L2T3U3

- Penggunaan lahan: pertanian lahan kering
- Kemiringan lereng: 15-25%



L3T1U1

- Penggunaan lahan: belukar
- Kemiringan lereng: 25-45%



L3T1U2

- Penggunaan lahan: belukar
- Kemiringan lereng: 25-45%



L3T1U3

- Penggunaan lahan: belukar
- Kemiringan lereng: 25-45%



L3T2U1

- Penggunaan lahan: hutan
- Kemiringan lereng: 25-45%



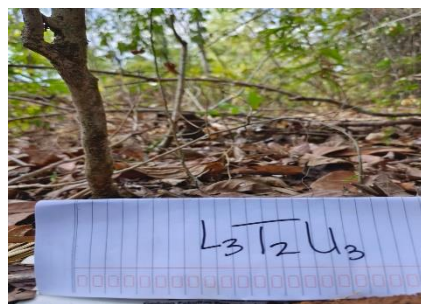
L3T2U2

- Penggunaan lahan: hutan
- Kemiringan lereng: 25-45%



L3T2U3

- Penggunaan lahan: hutan
- Kemiringan lereng: 25-45%



L3T3U1

- Penggunaan lahan: pertanian lahan kering
- Kemiringan lereng: 25-45%



L3T3U2

- Penggunaan lahan: pertanian lahan kering
- Kemiringan lereng: 25-45%



L3T3U3

- Penggunaan lahan: pertanian lahan kering
- Kemiringan lereng: 25-45%



**Lampiran 2.** Analisis sifat fisik dan sifat kimia tanah di laboratorium

( a )



( b )



( c )



( d )

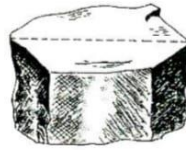
**Gambar Lampiran 2.** Persiapan pengukuran permeabilitas tanah (a), pengujian tekstur tanah metode hidrometer (b), penyiapan tanah untuk pengujian C-organik (c), pengujian kadar C-organik tanah (d).



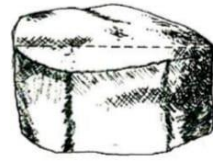
**Lampiran 3.** Bentuk struktur utama tanah (Balai Penelitian Tanah 2004)



Lempeng



Prisma bersudut



Prisma agak membulat



Tiang bersudut



Tiang agak membulat



Gumpal agak membulat



Gumpal bersudut



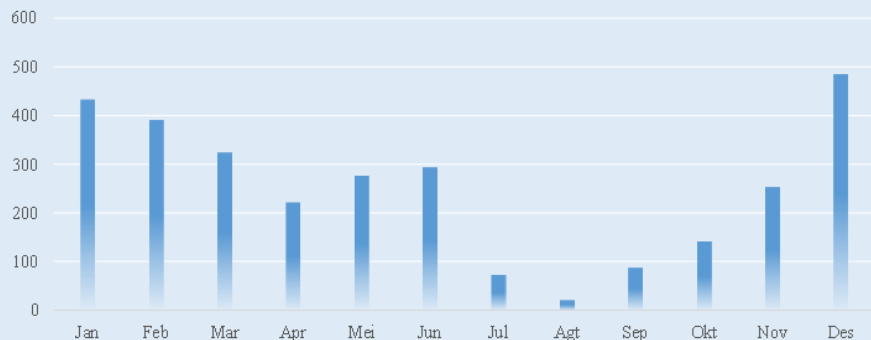
Butir membulat

Lampiran 4. Data Curah Hujan Tahunan dan Bulanan Desa Borisallo

Tahun	Curah Hujan (mm)												Jumlah
	Jan	Feb	Mar	Apr	Mei	Jun	Jul	Agt	Sep	Okt	Nov	Des	
2013	494	339	210	284	272	407	96	8	25	53	327	659	3175
2014	546	293	326	317	275	171	63	9	13	35	111	577	2735
2015	471	508	275	226	144	259	34	7	15	23	77	433	2471
2016	255	386	324	282	158	408	77	23	174	364	222	418	3092
2017	383	339	364	130	500	502	87	34	89	117	383	469	3398
2018	324	471	316	162	170	235	57	9	16	34	229	491	2516
2019	533	405	328	286	87	141	18	7	23	55	66	270	2219
2020	343	403	338	157	444	160	82	15	97	139	188	550	2915
2021	522	298	465	255	164	207	118	64	182	145	500	535	3454
2022	456	472	298	116	548	455	88	33	241	454	430	458	4049
<b>Rata-Rata</b>	433	391	324	222	276	295	72	21	88	142	253	486	3002

Sumber : Google Earth Engine

CURAH HUJAN RATA-RATA BULANAN  
TAHUN 2013-2022  
DESA BORISALLO, KABUPATEN GOWA



CURAH HUJAN RATA-RATA TAHUNAN  
TAHUN 2013-2022  
DESA BORISALLO, KABUPATEN GOWA

