

DAFTAR PUSTAKA

- Alie, M. E. R. (2015). Kajian Erosi Lahan pada DAS Dawas Kabupaten Musi Banyuasin, Sumatera Selatan. *Jurnal Teknik Sipil dan Lingkungan*, 3(1), pp. 749-754.
- Arsyad, S. (2006). *Konversi Tanah dan Air*. IPB Press: Bogor.
- Asdak, C. (2014). *Hidrologi dan Pengelolaan Daerah Aliran Sungai*. Gajah Mada University Press: Yogyakarta.
- Bamutaze, Y., Paul, M., Shuichi, O., Daniel, N., and Peter, N. (2021). Intersecting RUSLE modelled and farmers perceived soil erosion risk in the conservation domain on mountain Elgon in Uganda, *Applied Geography*, 126(8), pp. 1-16.
- Baver, L.D. (1959). *Soil Physics*. John Wiley and Sons, inc: New York.
- Brooks, et al. (2003). *Hydrology and the Management of watershed 3 rd Editions*. Iowa: Blackwell Publishing.
- Brune, G. M. (1953). *Trap Efficiency of Reservoirs. Proceedings of the American Society of Civil Engineers*, 1493–1500.
- Ezzaouini, M. A., Mahé, G., Kacimi, I., and Zerouali, A. (2020). Comparison of the MUSLE model and two years of solid transport measurement, in the Bouregreg Basin, and impact on the sedimentation in the Sidi Mohamed Ben Abdellah Reservoir, Morocco. *Water*, 12(7), pp. 2-27.
- Garbarino, E., Orveillon, G., Saveyn, H., Barthe, P., Eder, P. (2018). *Best Available Techniques (BAT) Reference Document for the Management of Waste from Extractive Industries in Accordance with Directive 2006/21/EC*. Publications Office of the European Union, Luxembourg. <https://doi.org/10.2760/35297>.
- Hambali, R. (2016). Studi Karakteristik Sedimen Dan Laju Sedimentasi Sungai Daeng – Kabupaten Bangka Barat. *Jurnal Fropil*, 4(2), pp. 165-174.
- Hanafî, F., dan Dany, P. (2021). Aplikasi Model Rusle untuk Estimasi Kehilangan Tanah Bagian Hulu di Sub Das Garang, Jawa Tengah, *Jurnal Geografi*, 18(1), pp. 30-36.
- Hooke, J.M. (1979). Analysis of the Processes of Riverbank Erosion. *J. Hydrol*, 42(4), pp. 36-62.
- Huda, A. S., Arief, L. N., Nurhadi, B. (2020). Analisis Perubahan Laju Erosi Periode Tahun 2013 dan Tahun 2018 Berbasis Data Pengindraan Jauh dan Sistem Informasi Geografis (Studi Kasus: Das Garang), *Jurnal Geodesi Undip*, 9(1), pp. 106-114.
- Khusairi, A. R., Tamrin, K., dan Yunasril. (2018). Kajian Teknis Sistem Penyaliran Tambang pada Tambang Terbuka Batubara PT Nusa Alam Lestari, Kenagarian Sinamar, Kecamatan Asam Jujuhan, Kabupaten Dharmasraya. *Jurnal Bina Tambang*. 3(3), pp. 1202-1212.

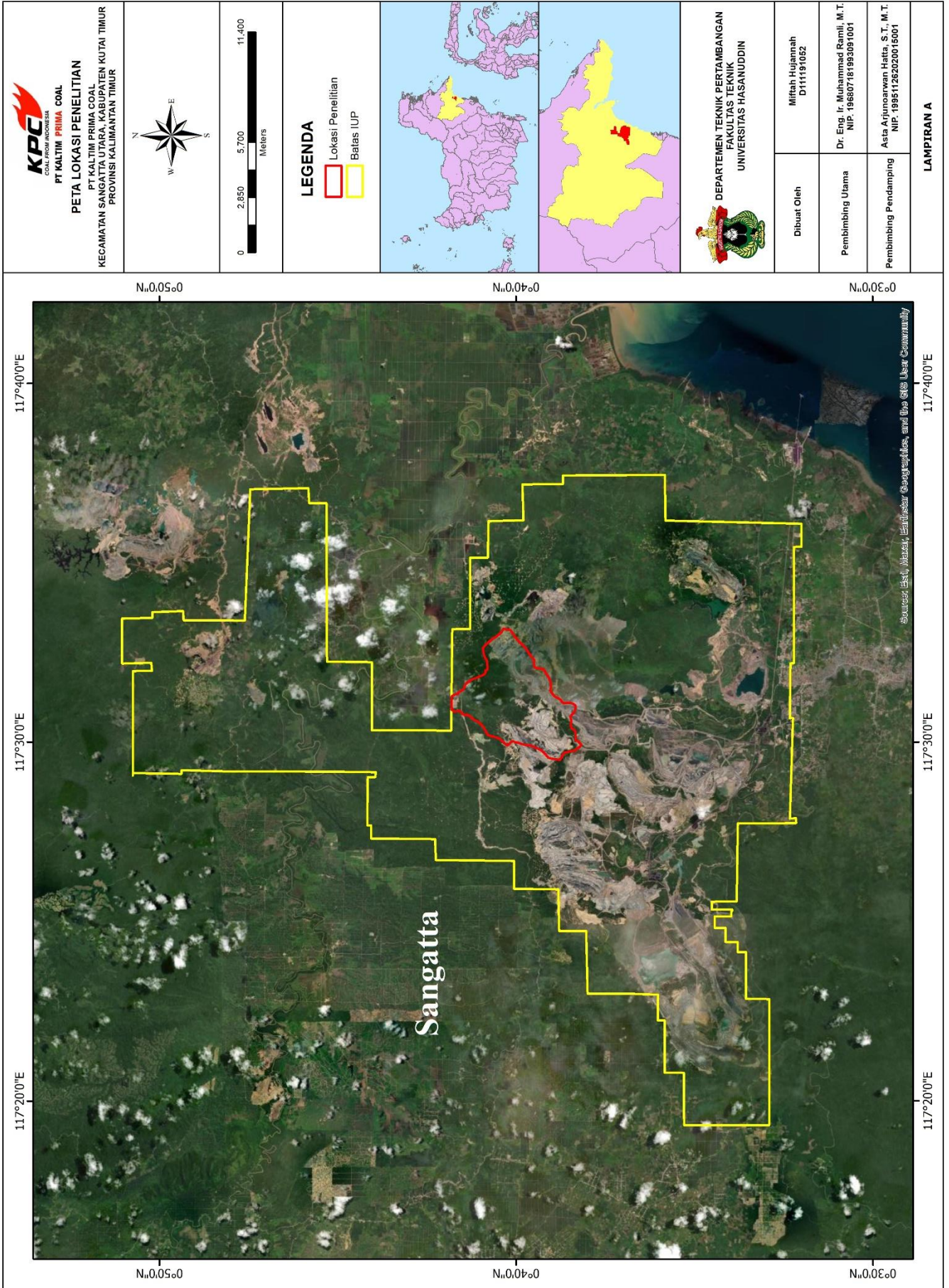
- Kironoto, B.A. (2000). *Hydraulics of Sedimen Transport, Diktat Kuliah MPBA Universitas Gadjah Mada*. Yogyakarta: UGM.
- Krisnayanti, D. S., I Made, U, dan Melati, J. M. (2018). Pendugaan Erosi dan Sedimentasi menggunakan Metode USLE dan MUSLE pada DAS Noel-Puames. *Jurnal Teknik Sipil*, 7(2), pp. 143-154.
- Lesmana, D. M. M., Tedy, A. C., Waterman, S.B., Edy N., dan Eddy, W. (2020). *Prosiding Seminar Teknologi Kebumihan dan Kelautan (ITATS)*, 2(1), pp. 307-312.
- Loebis, Joesron. (1993). *Hidrologi Sungai*. Jakarta: Yayasan Badan Penerbit Pekerjaan Umum.
- Meyer, L.D., and Harmon. (1984). Susceptibility of agricultural soils to interrill erosion. *Soil Sci. Soc. Am.J*, 8(1), pp. 152-157.
- Mihi, A., Benarfa, N., & Arar, A. (2020). Assessing and mapping water erosion-prone areas in northeastern Algeria using analytic hierarchy process, USLE/RUSLE equation, GIS, and remote sensing. *Applied Geomatics*, 12(2), pp. 179–191.
- Nigam, G. K., Sahu, R. K., Sinha, M. K., Deng, X., Singh, R. B., and Kumar, P. (2017). Field assessment of surface runoff, sediment yield and soil erosion in opencast mines in Chirimiri area, Chhattisgarh, India, *Physics and Chemistry of the Earth*, 101(3), pp. 137-148.
- Pradana, A. A., Dwi, N. M., dan Soemarno, W. S. (2021). Prediksi Laju Erosi dan Valuasi Ekonomi pada Area Reklamasi Pertambangan Batubara. *Indonesian Journal of Environmental Education and Management*. 6(1), pp. 78-91.
- Prodjosumarto, P. (1994). *Rancangan Kolam Pengendapan Sebagai Pelengkap Sistem Penirisan Tambang*. Bandung.
- PT KPC. (2006). *Modified Design Flood Estimation Manual & Ragunath*. Kalimantan Timur: PT Kaltim Prima Coal.
- Rastanto, R. N. A., Dian, S., dan Andre, P. H. (2022). Analisa Laju Erosi dan Arah Konservasi Lahan Menggunakan Aplikasi ArcMap Pada DAS Pekalen Hulu Kabupaten Probolinggo Jawa Timur. *Jurnal Teknologi dan Rekayasa Sumber Daya Air*, 3(1), pp. 367-380.
- Renard, K.G., G.R. Foster, G.A. Weesies, D.K. McCool, and C.D. Yoder. (1997). *Predicting Soil Erosion by Water: A Guide to Conservation Planning with the Revised Soil Loss Equation (RUSLE)*. U.S. Department of Agriculture, Agriculture Handbook 703, 384 pp.
- Rice, S.H., Messina, A., Biggs, T., Vargas-Angel, B., Whitall, D. (2016). *Baseline assessment of Faga'alu watershed: a ridge to reef assessment in support of sediment reduction activities and future evaluation of their success*. NOAA Technical Memorandum CRCP 23. <https://doi.org/10.7289/V5BK19C3>.
- Rumbino, Y. dan Kezia, A. (2020). Penentuan Laju Pengendapan Partikel Di Kolam Penampungan Air Hasil Pencucian Bijih Mangan. *Jurnal Ilmiah Teknologi FST Undana*. 14(2): pp. 55-59.

- Rosalinda, Assidiqi, A., Wiratama, J., dan Megasukma, Y. (2022). Rancangan Dimensi *Settling Pond Pit* IV Pt Akat Srida Amri, Kabupaten Bungo. *Jurnal Pertambangan*. 6(2): pp. 52-59.
- Rose, C.W. & B. Yu. (1998). *Dynamic Process Modelling of Hydrology and Soil Erosion*. Soil Erosion at Multiple Scales (eds Penning de Vries, FWT., F. Agus & j. Kerr). C.A.B. Internastional.
- Saputra, K. D. A., Jaji, A. (2022). Perbandingan Antara Metode Usle dan Musle dalam Analisis Erosi Lahan pada Daerah Tangkapan Air Waduk Cengklik, *Dinamika Teknik Sipil*, 15(1), pp. 54-61.
- Sartohadi, J. (2013). Geomorfologi Tanah DAS Sarayu Jawa Tengah. *Majalah Geografi Indonesia*, 18(20), pp. 135-150.
- Schwab, G.O., Frevert, R. K., Edmister, T.W., and Barnes, K.B. (1981). *Soil and Water Conservation Engineering 3rd Edition*. John Wiley and Sons: New York.
- Shen, X., Sun, T., Su, M., Dang, Z., Yang, Z. (2019). Short-term response of aquatic ecosystem metabolism to turbidity disturbance in experimental estuarine wetlands. *Ecological Engineering*., 136, pp. 55-61.
- Sihaloho, R., Bambang, S., dan Manyuk, F. (2020). Aplikasi Sistem Informasi Geografis (SIG) untuk Prediksi Erosi Lahan dengan Metode MUSLE. *Jurnal Teknik*, 14(2), pp. 153-162.
- Surahmad, R. C. (2021). Rancangan Teknis Sistem Penyaliran pada Kolam Pengendapan (*settling pond*) di *Pit Durian PT. J Resources Bolaang Mongondow Site* Bakan, Sulawesi Utara, ReTII, pp. 226-237.
- Suripin. (2004). *Pelestarian Sumber Daya Air*. Andi: Yogyakarta.
- Sutapa, I. W. (2010). Analisis Potensi Erosi Pada Daerah Aliran Sungai (Das) di Sulawesi Tengah. *Jurnal SMARTek*, 8(3), pp. 169 – 181.
- Triatmodjo, B. (2008). *Hidrologi Terapan*. Yogyakarta: Beta Offset.
- Utamakno, L., Budiarto, dan Tinungki, S. R. (2020). *Rancangan Pemodelan Settling Pond pada Daerah Imkasu di PT CAG Nikel, Pulau Gag, Kabupaten Raja Ampat, Papua Barat*. Prosiding, Seminar Teknologi Kebumihan dan Kelautan (SEMITAN II) Institut Teknologi Adhi Surabaya (ITATS), 2(1), pp. 95-104.
- Utomo, W. H. (1989). *Erosi dan Konservasi Tanah, Communication Soil Science*. Universitas Brawijaya, Malang.
- Utomo, P. dan Prisca, F. (2021). Penentuan tingkat akurasi beberapa Metode prediksi efisiensi tangkapan (*trap Efficiency*) sedimen di waduk mrica. *Jurnal rekayasa sipil (jrs-unand)*, 17(3), pp. 248-258.
- Williams, J. R. and Berndt, H. D. (1977). Sediment Yield Prediction Based on Watershed Hydrology. *Transactions of the American Society of Agricultural and Biological Engineers*, 20, pp. 1100-1104.
- Wischmeier WH, Smith DD. (1978). Predicting rainfallerosion losses a guide to conservation planning. *USDA Agric. Handb* (537): 58.

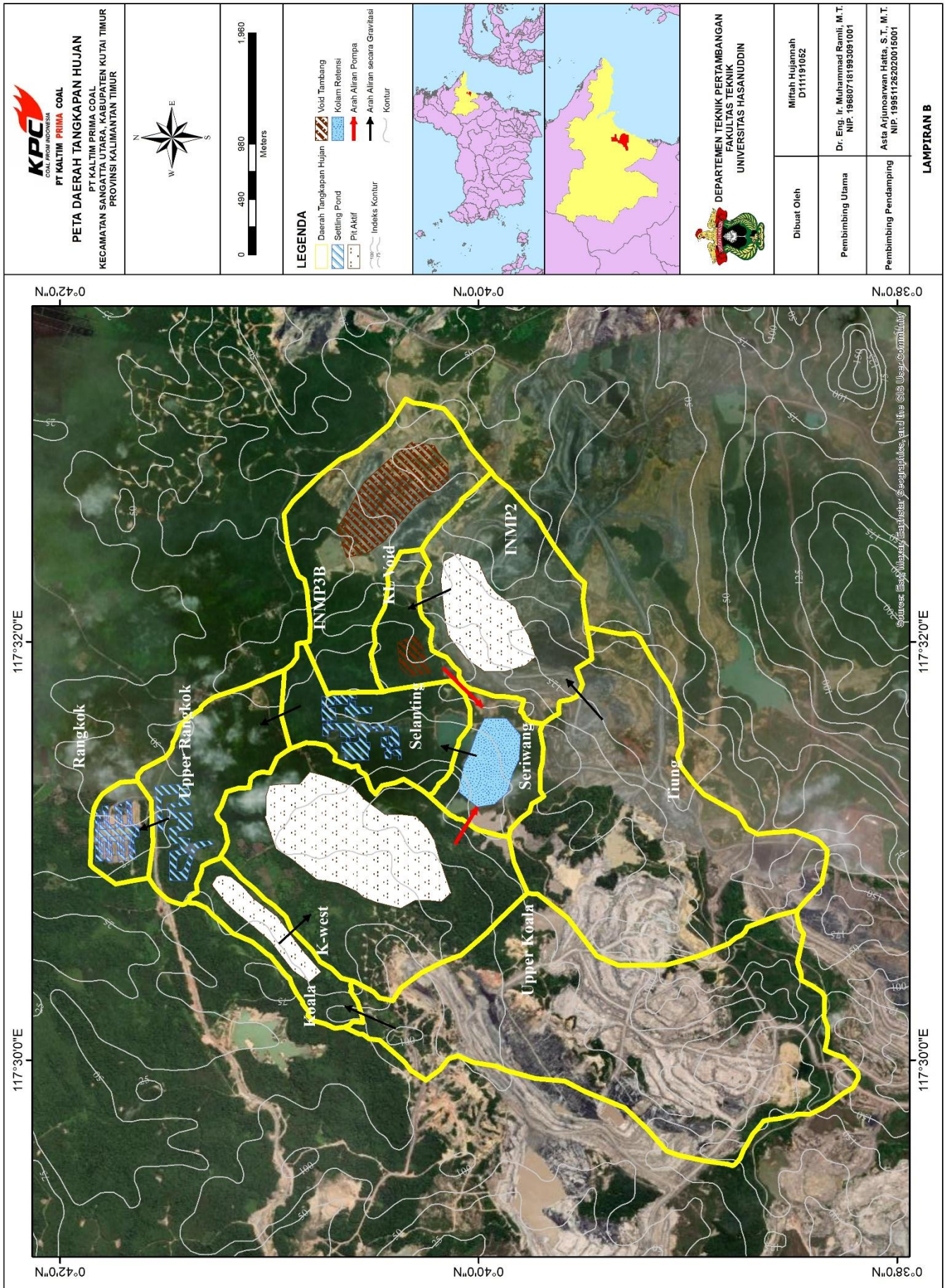
- Yanti, R. M., Anugerah, R. D., dan Apriani, D. W. (2019). Evaluasi Kapasitas Saluran Sub DAS Ampal Kota Balikpapan. *Jurnal Kajian Teknik Sipil*, 4(2), pp, 136-144.
- Yellishetty, M., Gavin, M. M., and Richa, S. (2013). Prediction of soil erosion from waste dumps of opencast mines and evaluation of their impacts on the environment, *International Journal of Mining, Reclamation and Environment*, 27(2), pp. 88-102.
- Zapico, I., Jonathan, B. L., Carme, M., Azaro, S. A. C., and Jos, F. M. D. (2021). Evaluation of sedimentation pond performance for a cleaner water production from an open *pit* mine at the edge of the Alto Tajo Natural Park. *Journal of Cleaner Production*.
- Zapico, I., Laronne, J. B., Meixide, C., Castillo, L. S., & Martín Duque, J. F. (2020). Evaluation of sedimentation pond performance for a cleaner water production from an open *pit* mine at the edge of the Alto Tajo Natural Park. *Journal of Cleaner Production*, 124408. doi:10.1016/j.jclepro.2020.124408

LAMPIRAN

LAMPIRAN A
PETA LOKASI PENELITIAN



LAMPIRAN B
DAERAH TANGKAPAN HUJAN



LAMPIRAN C
DATA CURAH HUJAN PERIODE 2013-2022

A. DATA CURAH HUJAN PT KALTIM PRIMA COAL TAHUN 2013

PT KALTIM PRIMA COAL												
CURAH HUJAN STASIUN KEPODANG TAHUN 2013												
Tanggal	CURAH HUJAN (mm)											
	Jan	Feb	Mar	Apr	Mei	Jun	Jul	Ags	Sep	Okt	Nov	Des
1	25.5	7.0	1.5	26.0	2.0	2.0	0.0	0.0	0.0	7.5	52.0	21.0
2	3.5	1.0	1.0	0.0	0.0	0.0	0.5	0.0	0.0	0.0	1.0	0.0
3	0.0	0.0	0.0	0.0	42.0	0.0	1.0	2.5	10.0	0.0	26.0	0.0
4	0.0	1.0	0.0	16.0	0.0	0.0	0.0	7.0	1.5	0.0	2.0	1.5
5	10.0	10.0	0.0	8.0	0.0	3.0	2.5	0.0	46.0	3.5	60.0	0.0
6	11.0	33.0	132.0	0.5	0.0	0.0	0.0	11.5	3.0	0.0	26.0	4.0
7	19.0	1.0	0.5	21.5	14.0	0.0	16.5	2.5	0.0	6.0	0.5	0.0
8	0.0	0.0	1.0	5.0	0.5	0.0	3.0	2.0	34.0	0.5	4.0	0.0
9	3.5	0.0	0.0	1.0	3.5	0.0	0.0	40.0	0.0	2.0	0.0	7.0
10	0.0	5.0	0.0	0.0	21.5	0.0	0.0	0.5	0.0	0.0	0.0	8.0
11	16.5	0.5	13.0	0.0	5.0	10.5	0.0	41.0	17.5	13.5	0.0	0.0
12	18.0	1.0	0.0	30.0	11.0	2.5	0.5	0.0	6.0	0.0	10.0	0.0
13	55.0	6.0	0.0	1.0	21.0	7.5	0.0	0.0	0.0	0.0	60.0	5.0
14	24.0	2.0	0.0	2.5	37.0	0.0	0.0	0.0	0.0	0.0	4.0	0.0
15	0.5	0.5	0.0	1.0	0.0	0.0	1.5	0.0	0.0	0.0	10.0	47.0
16	0.5	0.0	10.5	0.0	0.0	0.0	4.0	3.5	0.0	0.0	21.5	4.5
17	9.0	0.0	4.5	0.0	7.5	0.0	0.0	0.0	24.0	0.0	0.5	21.0
18	0.0	0.0	0.0	0.5	0.0	23.5	6.0	0.0	1.5	0.0	0.0	8.0
19	8.5	16.0	12.0	22.0	0.0	0.0	0.5	0.0	30.0	0.0	21.5	1.0
20	4.0	1.0	25.0	8.0	0.0	0.0	0.0	0.0	0.0	0.0	0.0	8.5
21	0.0	83.0	12.0	0.5	0.0	0.0	0.0	0.0	0.0	0.0	16.5	2.0
22	0.0	0.0	61.0	0.0	15.0	2.5	7.0	0.0	0.0	2.0	0.0	16.0
23	0.0	31.0	0.0	0.0	0.0	0.0	0.0	0.0	0.0	0.0	6.0	0.0
24	0.0	0.0	0.0	16.0	38.0	0.0	0.0	0.0	0.0	0.0	3.0	64.0
25	0.5	0.0	0.0	25.0	0.0	0.0	0.5	0.0	0.0	3.5	0.0	0.5
26	63.0	28.0	0.0	7.0	3.5	0.0	0.0	0.0	35.5	3.0	5.0	12.0
27	19.0	0.0	46.0	5.0	1.0	0.5	0.0	0.0	0.0	2.0	0.0	0.0
28	0.0	4.0	7.5	0.5	2.5	0.0	0.0	1.0	0.5	16.0	2.5	12.5
29	32.5		0.0	2.0	18.0	0.0	8.5	8.0	0.0	3.0	5.0	2.0
30	0.0		0.0	7.0	0.5	47.5	2.0	8.0	3.0	1.5	0.0	0.5
31	8.5		3.0		6.0		0.0	21.5		0.0		2.5
Jumlah (mm)	332.0	231.0	330.5	206.0	249.5	99.5	54.0	149.0	212.5	64.0	337.0	248.5
Rata-rata (mm)	201.7	199.9	222.4	200.1	199.1	155.1	139.3	129.6	113.0	149.0	216.6	216.6
Hujan Max (mm)	63.0	83.0	132.0	30.0	42.0	47.5	16.5	41.0	46.0	16.0	60.0	64.0

B. DATA CURAH HUJAN PT KALTIM PRIMA COAL TAHUN 2014

PT KALTIM PRIMA COAL												
CURAH HUJAN STASIUN KEPODANG TAHUN 2014												
Tanggal	CURAH HUJAN (mm)											
	Jan	Feb	Mar	Apr	Mei	Jun	Jul	Ags	Sep	Okt	Nov	Des
1	2.5	3.0	0.0	0.0	67.0	22.0	0.0	0.0	0.0	0.5	18.0	90.0
2	0.0	0.0	0.0	5.0	0.5	0.5	3.0	3.0	0.0	0.0	0.0	6.0
3	10.5	0.0	0.0	1.5	0.0	0.0	8.0	0.0	0.0	0.0	0.0	31.0
4	6.5	0.0	6.0	2.0	0.0	13.0	0.5	3.0	1.5	0.0	29.0	0.5
5	1.0	0.0	0.0	4.5	2.0	0.0	0.0	0.0	4.5	0.0	1.5	0.0
6	0.0	0.0	0.0	10.5	0.0	0.0	3.0	0.0	0.0	0.0	18.5	ND
7	9.5	0.0	0.0	0.0	0.0	0.0	0.0	0.0	0.0	0.0	3.5	84.0
8	34.0	14.5	0.0	16.0	3.5	0.0	23.0	0.0	8.0	0.0	4.5	29.0
9	4.0	0.0	0.0	7.0	0.0	0.0	1.0	0.0	0.0	0.0	2.0	7.5
10	6.0	14.0	0.0	1.0	0.0	4.5	0.5	34.0	35.0	0.0	0.0	0.5
11	7.0	11.0	0.0	0.0	2.5	76.0	0.0	0.0	4.0	0.0	29.5	3.0
12	0.0	3.5	0.0	7.5	68.0	0.0	7.0	8.5	15.0	0.0	0.5	11.5
13	0.0	18.0	0.0	3.0	0.0	0.0	0.5	1.0	5.0	0.0	78.0	5.5
14	0.0	0.5	23.0	0.0	4.0	0.0	42.0	3.5	0.0	0.0	0.0	0.5
15	0.5	0.0	1.5	6.0	0.5	19.0	3.0	0.0	0.0	0.0	5.5	0.0
16	32.0	6.0	0.0	3.5	1.0	0.0	0.0	0.0	1.5	0.0	2.0	4.0
17	0.5	0.0	4.5	14.5	12.5	0.0	0.0	0.5	0.0	0.0	0.0	0.0
18	0.0	5.0	22.0	0.0	0.5	0.0	8.0	0.0	0.0	0.0	0.0	30.5
19	1.5	0.0	0.0	35.5	16.0	17.0	0.0	0.0	0.0	0.0	0.0	0.0
20	0.0	0.0	0.0	53.0	2.5	0.5	0.5	14.0	0.0	0.0	1.0	4.5
21	0.0	1.0	15.0	0.0	0.5	0.0	3.5	14.0	0.0	0.0	0.0	0.5
22	0.0	0.0	0.0	1.5	0.0	0.0	1.0	1.5	0.0	0.0	0.0	0.0
23	29.0	0.0	0.0	3.5	0.0	30.5	0.0	0.0	0.0	0.0	0.0	0.0
24	0.0	0.0	0.0	19.0	0.5	0.0	0.0	0.0	0.0	16.0	0.0	12.5
25	2.0	0.0	1.5	0.0	0.0	0.0	0.0	0.0	0.0	0.0	2.0	
26	0.0	0.0	0.0	0.0	0.0	0.0	0.0	0.0	0.0	0.0	0.5	10.5
27	0.0	0.0	0.0	3.0	0.0	10.5	0.0	37.0	6.0	0.0	0.0	1.5
28	0.0	0.0	0.0	0.0	0.0	4.0	0.0	2.5	1.0	20.0	155.0	118.0
29	0.0		8.5	7.0	19.5	2.5	0.0	7.0	8.5	0.0		0.0
30	0.0		0.0	5.0	0.0	0.0	0.0	3.0	2.0	24.0		0.0
31	0.0		23.0		0.5		0.0	1.0		0.0		20.0
Jumlah (mm)	146.5	76.5	105.0	209.5	201.5	200.0	104.5	133.5	92.0	60.5	351.0	471.0
Rata-rata (mm)	201.4	196.6	219.5	201.2	198.2	156.8	138.7	132.5	112.5	145.7	218.1	255.6
Hujan Max (mm)	34.0	18.0	23.0	53.0	68.0	76.0	42.0	37.0	35.0	24.0	155.0	118.0

C. DATA CURAH HUJAN PT KALTIM PRIMA COAL TAHUN 2015

PT KALTIM PRIMA COAL												
CURAH HUJAN STASIUN KEPODANG TAHUN 2015												
Tanggal	CURAH HUJAN (mm)											
	Jan	Feb	Mar	Apr	Mei	Jun	Jul	Ags	Sep	Okt	Nov	Des
1	5.0	12.5	0.0	0.0	0.0	0.0	0.0	0.0	0.0	0.0	0.0	0.0
2	16.0	5.0	2.0	0.5	35.5	0.0	0.0	1.0	0.0	0.0	0.0	13.0
3	1.0	29.0	12.0	9.5	0.0	8.0	0.0	0.0	0.0	0.0	0.0	0.0
4	30.5	1.0	23.0	0.5	0.0	4.5	0.0	0.0	0.0	0.0	13.5	2.0
5	10.0	56.0	2.5	0.0	25.0	1.0	0.0	0.0	0.0	0.0	0.0	0.0
6	2.0	5.5	3.0	12.0	0.0	0.0	0.0	0.0	0.0	0.0	0.5	0.0
7	4.0	5.0	0.0	0.0	16.5	4.5	0.0	0.0	0.0	0.0	1.0	0.0
8	11.5	0.0	4.0	0.0	0.0	6.5	0.0	0.0	0.0	0.0	2.0	25.5
9	0.5	0.0	6.0	0.0	0.0	7.5	0.0	0.0	0.0	38.0	0.0	24.0
10	17.0	1.0	2.5	25.5	33.0	0.0	10.5	0.0	5.0	0.0	0.0	0.0
11	0.5	0.5	0.5	0.0	0.0	0.5	0.0	0.0	0.0	0.0	79.0	0.0
12	0.0	0.0	0.0	5.5	0.0	10.0	0.0	0.0	0.0	0.0	0.5	0.0
13	5.0	0.0	0.0	5.5	0.0	0.0	0.0	0.0	0.0	0.0	0.5	0.0
14	15.5	0.0	1.0	1.5	0.0	2.0	0.0	38.0	0.0	0.0	9.0	14.5
15	0.0	24.0	0.5	0.0	2.0	0.5	0.0	0.0	0.0	0.0	0.0	46.0
16	4.0	0.5	22.0	0.5	0.0	0.0	0.0	0.0	0.0	0.0	3.5	0.0
17	1.0	0.0	0.0	0.0	1.0	77.0	0.0	0.0	0.0	0.0	0.0	2.0
18	42.0	11.5	4.0	0.0	0.0	54.0	0.0	0.0	0.0	0.0	0.5	0.5
19	7.0	2.0	1.0	0.0	8.0	2.0	0.0	0.0	0.0	0.0	29.5	0.5
20	6.0	0.0	0.0	0.0	0.0	0.0	1.0	0.0	0.0	0.0	0.0	0.0
21	3.0	11.0	2.5	14.0	0.0	0.0	0.0	0.0	0.0	0.0	0.0	0.0
22	34.5	3.0	20.0	0.5	0.0	0.0	0.0	0.0	0.0	0.0	0.0	0.0
23	0.5	0.0	0.0	34.0	0.0	14.0	6.0	0.0	0.0	0.0	0.0	0.0
24	0.0	0.0	0.0	0.5	8.5	0.5	0.0	0.0	0.0	0.0	3.0	0.0
25	1.0	0.0	0.0	0.5	0.5	10.5	0.0	0.0	0.0	0.0	4.0	0.0
26	1.5	0.0	0.0	40.0	0.0	0.5	1.0	0.0	0.0	0.0	0.0	0.0
27	0.0	0.0	0.5	0.5	16.0	0.0	0.0	0.0	0.0	0.0	0.5	16.0
28	23.0	0.0	1.0	0.0	1.5	1.5	0.5	13.5	0.0	0.0	0.0	0.0
29	0.0		0.0	41.0	0.0	0.5	104.0	0.5	0.0	2.0	23.5	0.0
30	3.0		38.0	0.5	9.0	5.0	9.0	0.0	0.0	0.0	0.5	0.0
31	7.5		29.0		15.0		0.0	0.0		0.0		0.0
Jumlah (mm)	252.5	167.5	175.0	192.5	171.5	210.5	132.0	53.0	5.0	40.0	171.0	144.0
Rata-rata (mm)	204.5	197.3	219.3	201.9	196.7	158.9	136.2	128.9	108.9	108.9	216.9	250.7
Hujan Max (mm)	42.0	56.0	38.0	41.0	35.5	77.0	104.0	38.0	5.0	38.0	79.0	46.0

D. DATA CURAH HUJAN PT KALTIM PRIMA COAL TAHUN 2016

PT KALTIM PRIMA COAL												
CURAH HUJAN STASIUN KEPODANG TAHUN 2016												
Tanggal	CURAH HUJAN (mm)											
	Jan	Feb	Mar	Apr	Mei	Jun	Jul	Ags	Sep	Okt	Nov	Des
1	0.0	0.0	0.0	0.5	2.0	2.5	3.5	0.0	0.0	8.5	1.0	12.0
2	0.0	0.0	0.0	0.5	0.0	5.5	0.0	8.0	0.0	10.5	0.0	0.0
3	0.0	0.0	5.0	1.0	0.5	0.0	0.0	3.5	1.0	2.0	0.0	6.5
4	26.5	0.0	0.0	0.0	0.0	0.0	19.5	34.0	1.0	18.5	0.0	15.5
5	1.0	0.0	0.0	0.0	1.0	21.0	0.5	1.0	11.0	8.5	11.0	26.0
6	10.5	7.0	0.0	0.0	0.0	0.0	23.5	6.5	2.5	2.5	0.0	0.0
7	7.0	0.0	0.0	0.0	0.0	0.5	0.0	0.0	1.5	5.0	4.5	13.5
8	0.0	0.0	0.0	0.0	0.0	1.0	0.0	0.0	11.0	13.0	0.0	2.5
9	0.0	0.0	0.0	0.0	9.5	3.0	0.0	18.0	0.0	0.0	0.0	0.0
10	4.5	0.0	0.0	0.0	26.0	0.0	1.5	0.0	0.0	54.0	0.0	1.0
11	0.5	23.0	0.0	1.5	6.5	0.0	0.0	0.0	21.0	2.5	5.0	14.0
12	0.0	0.5	0.0	0.0	2.0	2.0	1.5	0.0	0.0	7.0	0.0	23.0
13	0.0	0.0	0.0	0.5	0.0	0.5	0.0	1.0	27.0	0.5	0.0	1.0
14	0.0	0.0	0.0	33.0	0.0	0.5	13.5	0.0	1.0	19.5	5.0	0.0
15	0.5	0.0	30.0	0.5	0.0	0.0	16.5	0.5	19.0	0.0	0.0	28.5
16	13.0	0.0	5.0	10.5	0.0	0.0	0.0	0.0	0.0	4.0	4.5	1.0
17	0.0	0.0	20.0	2.5	8.0	0.0	0.0	3.5	1.0	0.0	1.0	33.0
18	0.0	0.0	0.0	0.0	1.0	0.0	0.0	0.0	0.0	10.5	41.0	0.0
19	7.5	0.0	0.0	51.0	40.0	2.5	6.0	12.5	1.5	1.0	0.0	1.5
20	13.5	0.0	2.0	0.5	6.0	6.5	0.5	0.5	0.5	15.5	13.0	0.0
21	41.0	0.0	13.0	0.0	3.5	0.0	11.0	0.0	0.0	0.0	42.0	0.0
22	22.0	0.0	0.0	0.0	0.0	3.0	20.0	0.0	25.5	0.0	23.0	1.0
23	10.0	0.0	0.0	0.0	2.0	0.0	24.5	0.0	33.0	0.0	25.0	24.0
24	0.0	7.0	4.0	0.0	15.5	3.5	0.0	5.0	0.5	0.0	0.0	0.0
25	0.0	0.0	0.0	0.0	9.0	1.5	0.5	0.0	0.0	0.0	16.0	6.5
26	0.0	0.0	0.5	0.0	26.0	0.0	5.5	32.0	0.0	0.0	1.0	2.0
27	0.0	0.0	24.0	1.0	0.0	0.0	0.5	3.0	9.0	0.0	0.0	3.0
28	0.0	0.0	1.5	7.0	0.0	1.5	2.0	0.0	0.0	4.0	0.0	0.0
29	0.0	0.0	1.5	28.0	0.0	0.0	0.0	2.5	8.0	7.5	43.0	10.0
30	0.0		0.0	0.0	0.5	0.0	3.0	0.0	0.0	0.5	0.0	0.0
31	0.0		0.0		7.5		1.5	0.0		56.0		13.0
Jumlah (mm)	157.5	37.5	106.5	138.0	166.5	55.0	155.0	131.5	175.0	251.0	236.0	238.5
Rata-rata (mm)	201.5	193.2	215.7	199.1	196.2	158.4	137.4	128.5	113.3	145.9	214.6	240.7
Hujan Max (mm)	41.0	23.0	30.0	51.0	40.0	21.0	24.5	34.0	33.0	56.0	43.0	33.0

E. DATA CURAH HUJAN PT KALTIM PRIMA COAL TAHUN 2017

PT KALTIM PRIMA COAL												
CURAH HUJAN STASIUN KEPODANG TAHUN 2017												
Tanggal	CURAH HUJAN (mm)											
	Jan	Feb	Mar	Apr	Mei	Jun	Jul	Ags	Sep	Okt	Nov	Des
1	0.0	62.5	2.5	22.0	5.0	19.0	2.0	3.5	2.0	0.0	8.0	6.0
2	0.0	18.0	0.0	1.0	0.0	0.5	7.5	0.0	0.0	38.0	2.0	0.0
3	11.5	41.0	10.0	30.0	0.0	13.0	0.0	0.5	4.5	1.0	6.5	0.0
4	5.0	0.0	0.0	22.0	14.5	3.5	7.0	10.0	0.5	1.5	0.0	0.0
5	0.5	59.0	73.0	0.0	8.0	0.0	32.0	0.0	27.5	4.0	0.0	0.0
6	0.0	0.0	20.5	0.5	1.5	9.0	12.0	0.5	0.0	0.0	0.0	11.5
7	11.5	0.5	14.5	0.5	0.0	3.0	0.5	1.0	0.0	0.0	0.0	33.0
8	0.0	0.0	12.0	0.0	0.0	8.5	1.0	20.5	0.0	145.0	14.5	2.0
9	15.0	0.0	0.0	3.5	0.0	0.5	3.5	12.0	1.0	0.5	73.0	15.0
10	0.0	0.0	0.5	0.0	0.0	27.0	0.0	0.0	0.0	0.5	0.0	0.0
11	0.0	0.0	0.0	21.0	1.5	7.5	1.0	50.0	0.0	1.5	55.0	6.0
12	7.0	0.0	9.5	3.0	0.5	7.0	0.0	4.0	42.0	1.0	22.0	0.0
13	3.5	0.0	6.5	0.5	0.0	20.0	1.5	4.0	1.0	11.5	0.0	22.0
14	0.0	0.0	3.5	0.0	0.0	4.5	12.0	1.0	2.0	0.0	63.0	0.0
15	7.5	0.0	0.0	0.0	2.5	0.5	8.5	32.0	14.5	0.0	0.0	0.5
16	0.0	0.0	1.5	0.0	0.0	0.0	1.0	0.5	0.0	0.0	1.5	0.0
17	1.0	0.0	0.0	19.0	2.5	2.5	3.5	4.5	3.5	1.0	6.0	0.0
18	0.0	68.0	19.5	1.5	15.0	0.0	1.0	6.0	1.0	0.0	5.0	10.0
19	0.5	0.0	18.0	0.5	16.0	1.5	0.0	0.0	0.0	0.0	0.0	0.0
20	0.0	0.0	0.0	0.5	1.0	1.5	0.0	2.5	0.0	0.0	20.0	8.0
21	3.0	0.0	0.0	0.0	0.5	4.0	0.0	7.5	25.5	6.5	7.5	0.5
22	5.0	0.5	31.5	0.0	1.0	0.0	4.0	3.0	16.0	0.0	2.0	1.5
23	50.0	22.0	0.5	1.0	1.0	3.0	0.5	0.0	0.0	0.0	10.0	0.5
24	0.5	2.5	0.0	73.0	7.0	3.5	0.0	0.5	12.0	0.0	2.0	0.0
25	7.0	10.0	0.0	0.5	0.5	0.0	0.0	0.5	1.5	2.5	40.0	10.5
26	11.5	29.0	0.0	1.5	2.5	27.0	0.0	0.0	0.5	0.0	0.5	0.0
27	7.0	0.0	40.0	3.5	0.5	0.0	0.0	11.5	0.0	0.0	0.0	0.0
28	0.5	2.5	0.0	0.0	1.0	28.0	0.0	0.0	0.0	1.0	31.0	0.0
29	0.0		0.0	17.0	0.0	0.0	59.0	0.0	0.0	28.0	4.0	0.0
30	0.0		0.0	0.5	29.0	5.0	0.0	3.5	2.5	0.0	49.0	18.5
31	1.5		6.5		0.0		0.0	0.0		8.5		84.5
Jumlah (mm)	149.0	315.5	270.0	222.5	111.0	199.5	157.5	179.0	157.5	252.0	422.5	230.0
Rata-rata (mm)	201.0	196.6	219.8	198.7	194.2	158.0	138.5	128.9	113.3	145.3	222.4	250.2
Hujan Max (mm)	50.0	68.0	7.3	73.0	29.0	28.0	59.0	50.0	42.0	145.0	73.0	84.5

F. DATA CURAH HUJAN PT KALTIM PRIMA COAL TAHUN 2018

PT KALTIM PRIMA COAL												
CURAH HUJAN STASIUN KEPODANG TAHUN 2018												
Tanggal	CURAH HUJAN (mm)											
	Jan	Feb	Mar	Apr	Mei	Jun	Jul	Ags	Sep	Okt	Nov	Des
1	0.0	0.5	1.5	4.0	1.5	0.5	2.0	0.0	0.0	1.0	0.0	0.0
2	7.0	0.0	31.0	0.5	0.0	0.0	9.5	1.0	6.5	3.0	0.5	0.0
3	0.0	0.0	0.0	6.0	0.0	0.0	7.0	0.0	0.0	0.5	0.0	1.5
4	0.5	0.0	13.0	38.0	0.5	26.0	46.0	0.0	0.5	2.5	0.0	4.5
5	16.0	7.5	0.0	1.0	1.0	0.0	31.0	0.0	0.0	0.0	3.5	6.5
6	4.0	59.0	12.5	25.5	0.0	6.0	2.5	0.0	4.0	0.0	0.0	1.0
7	42.5	4.0	0.0	8.5	0.5	25.0	0.0	0.0	2.5	0.0	0.0	1.0
8	0.0	2.0	15.0	1.0	0.0	0.0	0.0	0.0	0.0	7.0	1.5	8.0
9	32.0	23.5	11.5	0.0	1.0	34.0	22.0	0.0	30.0	3.5	27.0	9.5
10	5.0	8.0	0.0	0.0	0.5	0.0	0.5	0.0	0.5	0.0	0.0	7.0
11	1.0	16.5	0.0	0.0	0.0	4.5	1.0	0.0	0.0	0.0	1.0	16.5
12	11.5	0.0	0.0	11.0	20.0	0.0	0.5	0.0	8.5	16.5	20.5	0.5
13	7.0	0.0	0.0	1.0	21.5	0.5	0.0	0.0	0.0	9.5	0.0	0.0
14	4.5	22.0	32.5	0.5	0.0	1.0	0.0	0.5	0.0	14.0	18.0	0.0
15	2.0	43.0	0.0	0.0	0.0	20.0	0.0	0.0	0.0	9.5	0.0	0.0
16	0.0	0.0	84.0	9.0	0.0	1.0	1.0	8.5	0.0	11.5	4.5	4.0
17	0.0	0.0	0.5	3.5	0.0	0.5	0.0	21.5	0.0	0.0	2.0	3.0
18	0.0	0.0	0.0	102.0	4.0	1.0	0.0	0.0	0.0	0.0	24.0	4.5
19	18.0	2.5	0.0	31.0	0.0	0.0	0.0	26.5	0.5	0.0	31.0	0.5
20	2.5	15.0	35.0	0.0	4.5	0.5	0.0	0.0	11.5	0.0	6.5	57.0
21	0.0	1.0	0.0	2.5	0.5	9.0	0.0	8.0	0.0	19.0	1.0	8.5
22	1.0	1.0	1.5	21.0	0.0	0.5	0.0	2.0	0.0	0.5	0.5	0.5
23	2.0	1.5	0.0	0.0	0.0	0.0	0.0	0.0	0.0	11.0	0.0	0.0
24	4.5	0.5	0.0	1.5	10.0	7.0	0.0	0.0	0.0	0.0	14.0	4.0
25	0.0	3.5	0.0	9.0	3.5	0.0	4.0	46.5	0.0	0.0	0.0	0.0
26	11.5	0.0	0.0	34.0	1.5	6.5	0.5	0.0	39.0	8.5	0.5	0.0
27	0.5	0.0	23.5	1.5	0.0	6.0	0.0	1.5	14.5	5.0	0.0	2.5
28	23.5	0.0	29.0	0.5	3.0	0.5	0.0	0.0	0.5	18.0	8.5	0.5
29	50.0		0.5	50.0	8.5	5.0	20.0	0.5	1.5	42.0	0.0	0.0
30	0.0		0.0	0.5	0.5	2.5	6.5	16.0	1.5	9.5	14.0	0.0
31	5.0		0.0		23.0		0.5	0.0		0.0		2.5
Jumlah (mm)	251.5	211.0	291.0	363.0	105.5	157.5	154.5	132.5	121.5	192.0	178.5	143.5
Rata-rata (mm)	203.4	197.8	221.9	201.9	191.3	156.6	138.6	128.5	113.1	145.6	220.3	246.7
Hujan Max (mm)	50.0	59.0	84.0	102.0	23.0	34.0	46.0	46.5	39.0	42.0	31.0	75.0

G. DATA CURAH HUJAN PT KALTIM PRIMA COAL TAHUN 2019

PT KALTIM PRIMA COAL												
CURAH HUJAN STASIUN KEPODANG TAHUN 2019												
Tanggal	CURAH HUJAN (mm)											
	Jan	Feb	Mar	Apr	Mei	Jun	Jul	Ags	Sep	Okt	Nov	Des
1	0.5	20.0	0.0	23.5	0.0	4.0	0.0	0.0	0.0	3.0	23.5	5.5
2	3.5	8.5	0.0	0.5	1.0	18.0	39.0	0.0	0.0	1.5	0.0	3.0
3	27.0	1.0	0.0	27.5	1.5	8.0	1.0	0.0	0.0	0.0	17.0	20.5
4	5.0	0.0	0.0	0.5	0.0	6.5	3.0	0.0	0.0	42.5	1.5	14.0
5	0.0	0.0	0.0	30.0	2.5	16.5	17.0	0.0	0.0	7.0	0.0	0.0
6	0.0	14.0	0.0	14.0	31.0	4.5	0.0	0.0	1.5	0.0	0.0	25.5
7	0.5	1.0	2.0	0.0	5.5	0.0	1.5	0.0	2.5	0.0	0.0	21.0
8	8.5	2.0	0.0	0.0	0.5	0.0	0.0	0.0	0.0	9.0	2.0	0.0
9	1.5	0.5	0.0	31.5	12.0	46.0	0.0	0.0	0.0	86.0	50.0	11.0
10	0.0	9.0	1.0	0.0	0.0	1.0	5.5	0.0	0.0	0.0	0.5	3.0
11	0.0	0.0	1.0	5.0	14.5	9.5	1.0	0.0	0.0	0.0	0.0	10.5
12	0.0	0.0	24.5	11.5	0.0	3.0	0.0	0.0	0.0	8.5	0.0	10.0
13	0.0	6.5	38.5	1.0	9.0	0.0	16.0	0.0	0.0	1.5	11.5	26.0
14	5.0	0.0	4.5	0.0	12.5	0.5	0.0	0.0	0.0	0.0	3.5	3.5
15	0.5	0.0	0.0	0.5	0.0	49.0	0.0	19.0	0.0	0.0	0.0	0.5
16	1.5	0.0	13.0	0.0	0.0	0.5	0.0	0.0	0.0	11.5	0.0	0.0
17	3.5	0.0	3.0	0.0	0.0	13.5	0.0	0.0	0.0	17.0	0.0	0.0
18	3.5	0.0	0.0	0.0	7.5	0.5	0.0	0.0	0.0	0.0	0.0	2.0
19	0.0	0.0	0.0	0.0	2.0	1.5	0.0	0.0	0.0	0.0	0.0	0.5
20	0.0	0.0	0.0	0.0	8.0	1.5	0.0	19.0	0.0	0.5	0.0	5.0
21	0.0	3.5	16.5	90.0	0.0	0.0	0.0	0.5	0.0	0.0	0.0	0.0
22	17.0	0.0	0.0	0.0	1.5	3.0	0.0	0.5	0.0	0.0	7.0	1.5
23	7.5	0.0	0.0	10.0	14.0	5.5	3.5	0.0	0.0	0.0	0.0	58.0
24	0.0	0.0	0.0	0.0	29.0	9.0	9.0	0.0	0.0	0.0	0.0	4.5
25	0.0	0.0	64.0	9.5	0.0	0.0	24.5	2.0	0.0	0.0	0.0	0.0
26	1.0	10.0	33.0	0.5	0.0	0.0	1.0	0.0	0.0	0.0	44.5	2.5
27	0.0	1.5	27.5	13.0	10.5	3.0	2.5	76.0	0.0	1.0	0.0	2.0
28	0.0	0.0	109.0	1.0	0.0	6.0	2.5	0.0	11.5	0.0	7.5	1.5
29	0.0		62.0	3.5	16.0	0.5	22.5	0.0	5.0	0.0	0.0	27.5
30	0.0		1.0	5.5	0.0	0.0	0.0	0.0	5.5	5.5	0.0	0.0
31	0.0		45.5		1.0		0.5	0.0		0.0		0.0
Jumlah (mm)	86.0	77.5	446.0	278.5	179.5	211.0	150.0	117.0	26.0	194.5	168.5	259.0
Rata-rata (mm)	203.6	194.9	222.6	202.5	190.1	157.7	137.3	126.6	110.4	146.3	219.9	246.4
Hujan Max (mm)	27.0	20.0	109.0	90.0	31.0	49.0	39.0	76.0	11.5	86.0	50.0	58.0

H. DATA CURAH HUJAN PT KALTIM PRIMA COAL TAHUN 2020

PT KALTIM PRIMA COAL												
CURAH HUJAN STASIUN KEPODANG TAHUN 2020												
Tanggal	CURAH HUJAN (mm)											
	Jan	Feb	Mar	Apr	Mei	Jun	Jul	Ags	Sep	Okt	Nov	Des
1	5.0	0.5	0.0	0.0	0.0	0.0	0.0	1.5	22.0	0.0	5.0	0.0
2	0.5	0.0	0.0	25.5	7.0	0.0	0.5	3.5	1.0	0.5	0.0	48.5
3	0.0	0.0	5.0	8.0	10.5	8.5	0.5	0.5	0.5	6.5	0.0	0.0
4	0.0	0.0	1.0	0.0	0.0	0.0	0.0	15.0	14.0	6.0	6.0	0.0
5	19.0	0.0	6.0	2.5	0.0	0.0	9.0	3.0	2.5	0.0	0.0	7.5
6	3.0	1.5	33.5	0.0	5.0	0.0	2.0	0.5	0.0	1.0	0.0	7.5
7	0.0	1.5	0.5	0.0	0.0	12.5	10.5	0.0	3.0	0.5	0.0	15.5
8	0.0	13.0	9.5	11.5	6.0	9.5	0.0	2.0	6.5	0.0	10.0	2.5
9	0.0	0.0	0.0	5.0	0.0	3.5	10.5	75.5	2.5	0.0	0.0	0.0
10	0.5	34.5	9.5	0.0	0.5	3.0	13.5	2.5	0.5	7.0	0.0	33.5
11	2.0	0.0	0.0	0.0	0.0	0.0	2.5	0.0	1.0	0.5	0.0	0.0
12	3.5	0.0	0.0	0.0	1.0	0.0	0.0	9.5	0.0	50.0	0.0	10.0
13	0.0	0.0	0.0	0.0	2.0	0.0	1.5	3.5	0.5	0.5	0.0	0.0
14	0.0	0.0	0.0	87.0	0.0	0.5	7.5	5.0	1.0	0.0	8.5	0.0
15	1.5	4.0	0.0	0.0	0.0	2.0	0.0	0.0	12.0	54.0	4.5	0.0
16	0.0	0.0	0.0	0.0	0.0	3.0	3.0	0.0	0.5	1.0	0.0	16.0
17	51.5	0.0	0.0	0.0	0.5	0.0	0.0	0.0	0.0	0.0	0.0	2.0
18	0.5	5.0	0.0	6.0	4.0	4.0	0.0	0.0	0.0	3.0	0.0	13.5
19	10.5	0.0	0.0	45.0	8.0	0.0	21.5	0.0	4.5	0.0	2.0	1.0
20	0.0	2.0	11.0	2.5	1.5	4.5	0.0	9.5	0.0	0.0	0.0	2.0
21	2.0	0.5	2.5	0.0	0.0	0.0	0.0	3.0	30.0	0.0	0.0	0.0
22	0.5	0.0	3.5	0.5	28.0	13.0	0.0	0.0	3.5	0.5	9.5	6.5
23	0.5	0.0	0.0	0.0	1.5	3.5	3.0	0.0	13.5	0.0	49.0	0.0
24	0.0	0.0	9.5	3.0	0.0	10.0	8.5	3.0	4.0	0.0	21.5	24.0
25	0.0	0.0	0.0	0.0	0.0	5.0	1.0	7.0	1.5	26.5	4.0	3.5
26	0.0	0.0	0.0	9.5	0.0	39.0	8.5	1.5	0.0	2.0	7.0	3.0
27	0.0	4.0	0.0	1.0	0.0	1.0	22.0	13.0	7.5	19.5	40.0	64.0
28	0.0	0.0	0.0	31.0	12.5	8.5	0.0	0.0	2.0	0.0	21.5	19.0
29	0.0	0.0	2.0	5.0	5.5	0.5	0.0	0.5	1.0	0.0	0.0	17.0
30	0.0		1.0	33.0	0.5	0.0	1.5	5.5	1.0	0.0	25.0	1.0
31	0.0		62.0		0.0		0.0	0.0		5.0		0.5
Jumlah (mm)	100.5	66.5	156.5	276.0	94.0	131.5	127.0	165.0	136.0	184.0	213.5	298.0
Rata-rata (mm)	201.3	191.5	221.5	202.7	188.3	156.4	137.3	126.7	111.8	146.9	146.9	247.3
Hujan Max (mm)	51.5	34.5	62.0	87.0	28.0	39.0	22.0	75.5	30.0	54.0	49.0	64.0

I. DATA CURAH HUJAN PT KALTIM PRIMA COAL TAHUN 2021

PT KALTIM PRIMA COAL												
CURAH HUJAN STASIUN KEPODANG TAHUN 2021												
Tanggal	CURAH HUJAN (mm)											
	Jan	Feb	Mar	Apr	Mei	Jun	Jul	Ags	Sep	Okt	Nov	Des
1	1.5	0.0	0.0	2.5	0.0	9.0	2.0	28.5	12.5	0.0	14.0	0.0
2	8.0	88.0	0.0	0.0	69.0	5.5	1.5	3.5	0.5	12.0	1.5	15.5
3	3.5	1.0	0.0	0.0	3.0	0.0	19.0	11.0	37.5	1.5	17.0	6.0
4	1.5	8.0	2.0	45.0	0.5	0.0	22.5	0.0	8.0	29.5	3.0	10.0
5	13.0	0.5	1.0	3.5	16.5	1.0	3.5	2.5	0.0	0.5	0.0	0.5
6	0.0	7.5	0.0	29.0	0.5	0.0	0.5	0.5	7.0	0.5	3.5	57.0
7	0.0	1.5	0.0	0.0	15.5	4.0	1.0	0.0	0.0	16.0	0.0	0.0
8	4.0	0.0	10.0	0.0	0.5	0.0	0.0	1.0	3.0	0.0	2.5	12.5
9	13.5	0.0	0.0	0.0	7.5	0.0	13.5	0.0	5.5	0.0	14.0	0.0
10	5.0	0.0	3.5	0.5	0.0	6.5	0.5	0.0	0.0	0.5	0.0	19.5
11	0.5	19.0	0.0	0.0	0.0	1.5	0.0	1.0	0.0	37.5	0.0	7.0
12	2.0	1.0	2.5	0.0	0.0	7.5	9.5	4.0	5.5	3.0	5.0	12.5
13	16.0	0.5	0.0	26.0	0.0	2.0	6.5	2.0	8.5	0.0	24.5	0.0
14	8.0	19.5	2.0	0.0	1.5	0.5	0.0	0.0	0.0	3.5	0.5	18.0
15	2.0	0.0	0.0	7.5	10.5	0.5	9.0	0.0	2.5	0.0	30.5	13.0
16	1.0	11.5	11.5	0.0	44.5	0.0	5.5	4.0	0.5	7.0	5.0	0.5
17	14.0	0.0	0.0	12.5	16.5	4.0	0.0	6.5	1.0	0.0	16.0	0.0
18	0.0	0.5	22.5	11.0	0.5	3.0	0.0	0.0	0.0	0.0	0.0	1.5
19	31.0	1.0	13.5	5.0	3.5	1.0	0.0	0.0	0.0	1.5	17.5	11.5
20	0.0	0.0	0.0	0.0	0.5	4.0	0.0	25.0	0.5	20.0	12.5	1.5
21	25.5	0.0	19.5	10.5	0.0	0.0	26.0	1.5	37.0	0.5	6.0	1.5
22	9.0	65.0	0.0	0.0	10.0	0.5	0.0	20.5	24.0	71.0	22.0	6.5
23	0.0	18.0	19.0	0.0	2.0	0.0	0.0	3.5	0.5	1.0	0.5	0.0
24	9.5	0.5	3.0	2.5	4.0	0.0	0.0	0.5	0.0	0.0	0.5	23.0
25	3.0	6.0	0.0	6.5	26.0	5.0	4.5	27.5	9.5	0.0	12.5	1.0
26	0.0	13.0	0.0	2.0	0.0	1.5	0.0	0.0	0.5	8.0	10.5	2.0
27	0.0	0.0	8.0	0.0	3.5	0.0	3.5	0.0	11.0	0.0	11.0	54.0
28	0.5	1.5	1.5	3.0	0.0	4.5	0.0	34.0	1.0	14.5	25.5	0.0
29	0.0		6.0	0.5	0.0	0.0	14.0	0.5	0.0	5.5	27.0	1.5
30	0.0		6.0	2.0	0.0	2.0	6.5	0.0	0.0	6.0	0.5	5.0
31	0.0		45.0		0.5		1.0	21.5		14.0		0.0
Jumlah (mm)	172.0	263.5	176.5	169.5	236.5	63.5	150.0	199.0	176.0	253.5	283.0	281.0
Rata-rata (mm)	200.6	192.1	220.9	202.0	188.0	155.4	137.8	124.9	108.8	142.9	214.5	240.6
Hujan Max (mm)	31.0	88.0	45.0	45.0	69.0	9.0	26.0	34.0	37.5	71.0	30.5	57.0

J. DATA CURAH HUJAN PT KALTIM PRIMA COAL TAHUN 2022







PT KALTIM PRIMA COAL												
CURAH HUJAN STASIUN KEPODANG TAHUN 2022												
Tanggal	CURAH HUJAN (mm)											
	Jan	Feb	Mar	Apr	Mei	Jun	Jul	Ags	Sep	Okt	Nov	Des
1	0.0	12.5	0.0	0.0	0.0	0.0	1.0	2.5	1.5	0.0	19.0	1.0
2	0.5	0.0	0.0	26.5	0.0	0.0	0.0	0.5	8.0	21.0	0.0	7.0
3	11.0	0.5	0.0	11.5	0.5	0.0	0.0	2.0	0.0	7.0	0.0	9.0
4	1.0	0.5	0.0	0.0	0.0	5.5	3.5	0.0	10.0	55.0	0.0	1.5
5	18.5	42.5	0.0	63.0	78.0	6.0	0.0	2.0	5.5	9.0	21.0	12.5
6	1.5	0.5	2.0	1.5	0.0	0.5	10.0	0.0	11.0	20.0	2.0	17.0
7	1.5	9.5	24.0	0.5	0.0	0.5	3.0	3.0	0.0	0.0	45.0	0.0
8	26.5	1.0	4.0	0.0	0.5	0.5	0.0	1.0	0.0	0.0	0.5	0.0
9	0.5	23.5	4.5	0.5	13.0	0.0	14.5	19.5	8.5	84.5	25.5	47.0
10	6.5	0.5	12.0	14.5	48.0	4.5	0.5	52.0	4.5	2.5	0.0	0.5
11	0.5	53.0	0.0	0.5	0.0	0.0	0.0	0.5	0.5	43.0	0.0	0.0
12	1.5	4.5	0.5	0.0	0.5	4.0	1.0	0.0	7.5	8.5	0.0	3.0
13	2.0	7.0	42.0	8.5	2.0	0.0	3.5	3.5	0.0	0.5	2.5	24.0
14	0.0	31.5	1.5	0.5	21.5	0.0	34.5	27.5	25.0	0.0	0.0	1.5
15	1.5	0.0	0.5	0.0	0.0	16.0	2.0	0.0	1.5	0.0	8.0	34.0
16	0.0	31.5	0.0	23.0	0.0	1.0	0.5	0.5	9.0	3.0	0.0	21.5
17	0.0	0.0	3.0	2.5	7.5	32.5	4.5	0.0	0.5	41.0	0.0	48.0
18	26.0	1.5	117.0	0.0	5.5	1.0	8.5	44.0	0.0	8.0	13.5	0.0
19	0.0	8.0	47.5	0.5	0.0	7.5	0.0	0.5	0.0	26.5	4.5	5.0
20	7.5	63.5	0.5	10.5	0.0	13.5	0.0	0.5	0.0	1.0	0.0	3.0
21	52.0	1.5	1.5	0.5	4.5	2.0	0.0	0.0	7.5	0.0	3.5	1.0
22	2.0	23.0	1.5	7.0	12.5	36.5	0.0	0.0	0.5	4.5	25.0	0.0
23	20.5	35.0	4.5	3.0	9.0	8.0	0.0	11.5	0.0	8.0	0.0	18.5
24	2.0	9.0	0.0	0.0	0.5	0.5	5.5	3.0	10.0	17.0	0.5	3.5
25	0.5	14.5	19.0	0.5	0.0	0.0	0.5	0.5	1.5	3.0	0.0	0.0
26	0.5	1.5	9.5	28.5	0.0	0.5	3.5	4.5	11.5	27.0	0.0	0.0
27	4.5	7.5	0.0	49.0	0.0	0.0	0.5	0.0	72.0	0.0	6.5	0.0
28	6.5	0.5	0.5	27.0	1.0	1.5	67.0	8.5	0.0	7.0	0.5	0.0
29	12.5		1.0	19.0	17.0	5.5	0.5	4.0	0.5	8.0	0.0	0.0
30	0.0		0.5	0.0	27.0	10.5	1.5	0.5	0.0	0.0	9.5	4.0
31	11.0		0.0		0.0		5.5	10.5		0.0		0.0
Jumlah (mm)	218.5	384.0	297.0	298.5	248.5	158.0	171.5	202.5	196.5	405.0	187.0	262.5
Rata-rata (mm)	203.8	194.0	223.3	203.8	189.9	154.4	137.7	130.5	115.4	154.6	220.1	249.1
Hujan Max (mm)	52.0	63.5	117.0	63.0	78.0	36.5	67.0	52.0	72.0	84.5	45.0	48.0

LAMPIRAN D
KARTU KONSULTASI TUGAS AKHIR

Lampiran B 10
Kartu Konsultasi Tugas Akhir

**JUDUL: ANALISIS LAJU EROSI TERHADAP PENDANGSKALAN SETTILING
POND PADA AREA CLUSTER RANGKOK PT KALTIM PRIMA COAL,
KALIM PRIMA COAL**

(Konsultasi minimal 8 kali)

TANGGAL	MATERI KONSULTASI	PARAF DOSEN
24/07/ 2023	- Perbaiki Judul - Perbaiki Latar belakang - Perbaiki diksi kata - Tabel jadikan satu halaman	
28/07/ 2023	- Perbaiki peta - Abstrak english - perbaiki daftar pustaka	
15/08/ 2023	- Perbaiki bagan alir - perbaiki peta	
24/08/ 2023	- perbaiki metode penelitian - perbaiki penulisan	
31/08/ 2023	- Perbaiki penulisan tabel - perbaiki perhitungan BAB 4 - perbaiki abstrak	
1/09/ 2023	- perbaiki kata pengantar - perbaiki daftar pustaka - konsistensi penulisan	

TANGGAL	MATERI KONSULTASI	PARAF DOSEN
7/09/ 2023	<ul style="list-style-type: none">- Perbaikan bagan alir- perbaikan PPT- Konsistensi Penulisan	