

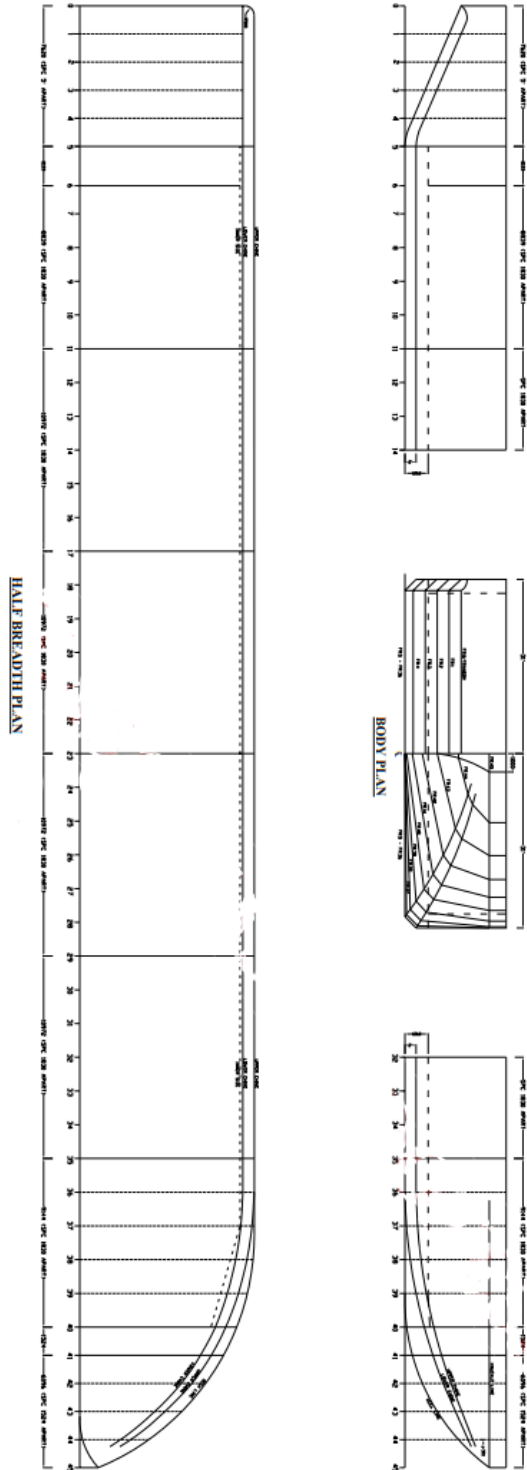
DAFTAR PUSTAKA

- Biro Klasifikasi Indonesia, Peraturan Klasifikasi dan Konstruksi. Volume II Peraturan Lambung, Edisi 2022.
- Ekowati, T., & dkk. (2016). *Buku Ajar Studi Kelayakan Dan Evaluasi Proyek*. Semarang: Media Inspirasi Semesta.
- Eyres, D. (2007). *Ship Construction Sixth Edition*. Elsevier Ltd.
- Indonesia. Peraturan Menteri Perhubungan Republik Indonesia Nomor PM 24 Tahun 2022 tentang Pencegangan Pencemaran Lingkungan Maritim.
- Indonesia. Peraturan Menteri Perhubungan Republik Indonesia Nomor PM 39 Tahun 2016 tentang Garis Muat Kapal Dan Pemuatan.
- International Maritime Organization (IMO), *International Convention on Load Lines* (ICLL), 1966, as amended in 2003, Edition 2005. Kasmir dan Jakfar. (2003). *Studi Kelayakan Bisnis*. Jakarta: Kencana Prenada Media Group.
- Khoirul Anwar, M. (2020). *Re-Design Ruang Muat Kapal Alih Fungsi Barge Menjadi Oil Barge 5000 DWT*. Skripsi Program Studi Teknik Sistem Perkapalan Fakultas Teknik dan Ilmu Kelautan Universitas Hang Tuah.
- Prakoso, R. B., Chrismianto, D., & Amiruddin, W. (2015). Analisa Kekuatan Konstruksi Memanjang, Stabilitas dan Olah Gerak KMP. Lema Ro-RO 750 GT Untuk Pelayaran Sorong - Waigeo. *Jurnal Teknik Perkapalan*, 495.
- Samson, N., & dkk. (2013). Stability Analysis for the Design of 5000-Tonnes Offshore Wok Barge. *International Journal of Engineering and Technology*, 1.
- Sofi'i, M., & Djaja, I. K. (2008). *Teknik Konstruksi Kapal Baja Jilid 1*. Jakarta: Direktorat Pembinaan Sekolah Menengah Kejuruan.
- Yinyoung, K., Koji, G., & Masahiro, T. (2003). Automatic two-dimensional layout us based heuristic algorithm. *Journal of Marine Science and Technology*, 38.

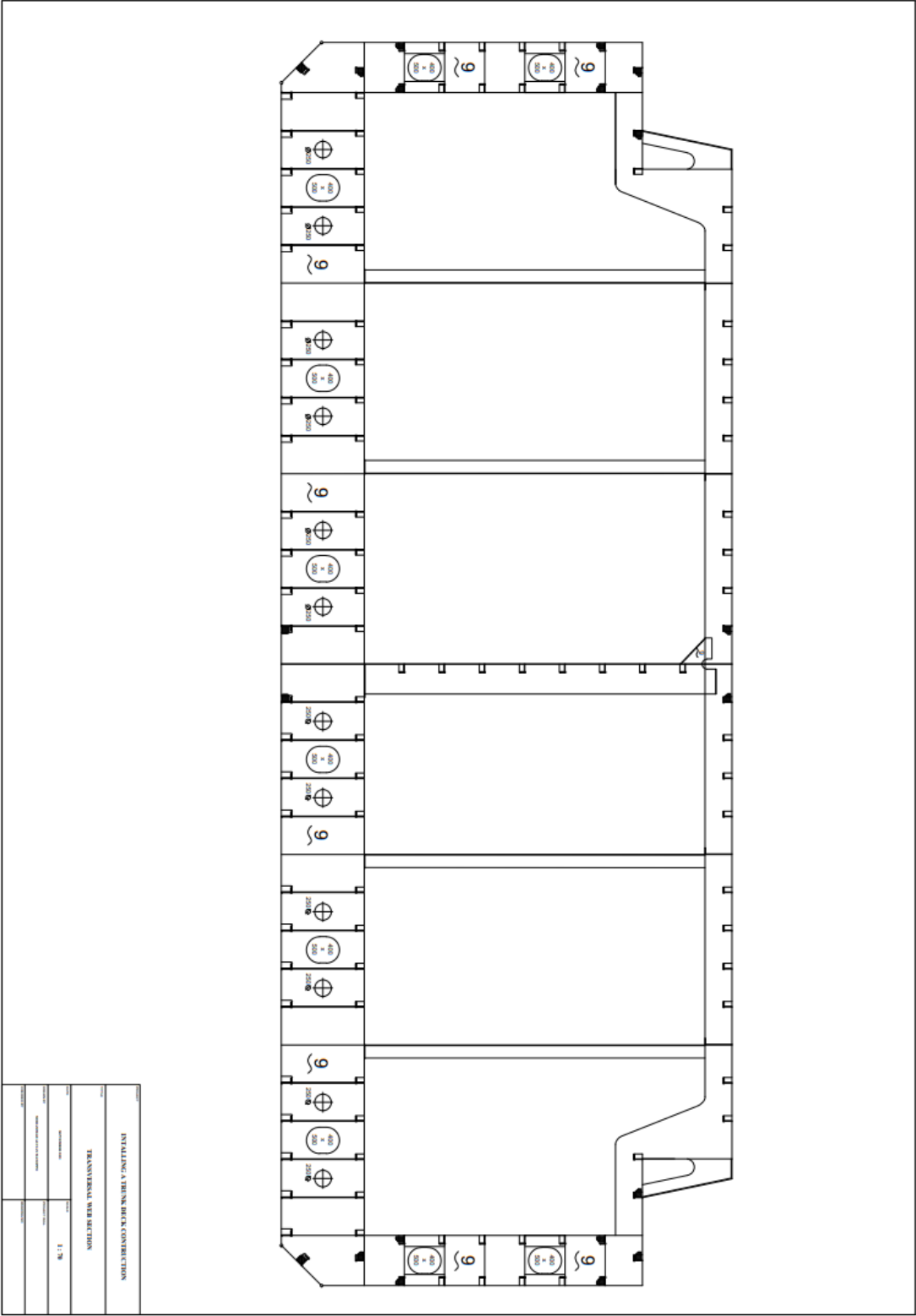
LAMPIRAN

Lampiran 1 Gambar *Linesplan*

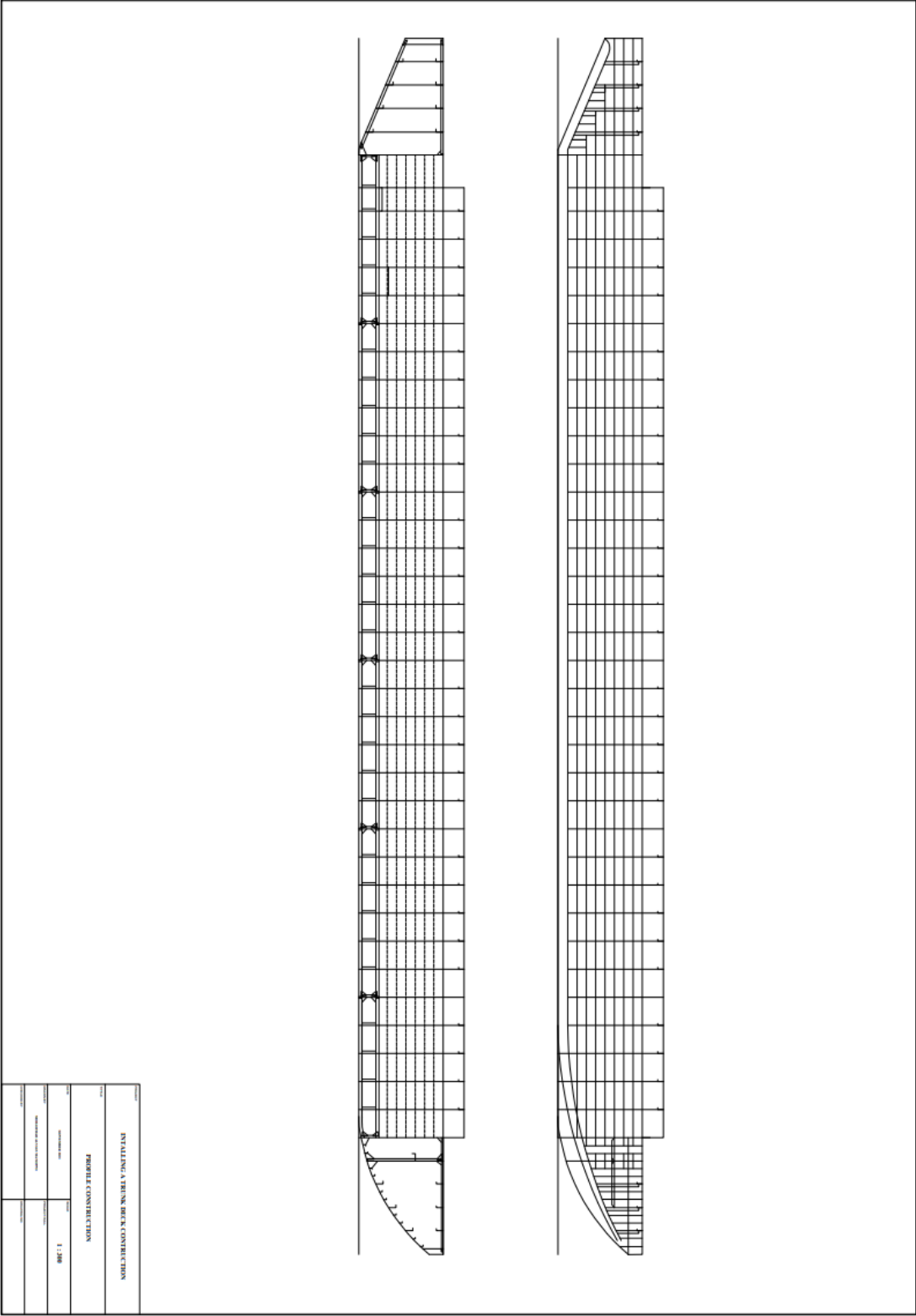
GOLONGAN											
DR. NO	KELI	UPPER	LOWER	UPPER	LOWER	UPPER	LOWER	UPPER	LOWER	UPPER	LOWER
0	1	2	3	4	5	6	7	8	9	10	11
0	2106	2048	2048	2048	2048	2048	2048	2048	2048	2048	2048
1	2106	2048	2048	2048	2048	2048	2048	2048	2048	2048	2048
2	2106	2048	2048	2048	2048	2048	2048	2048	2048	2048	2048
3	2106	2048	2048	2048	2048	2048	2048	2048	2048	2048	2048
4	2106	2048	2048	2048	2048	2048	2048	2048	2048	2048	2048
5	2106	2048	2048	2048	2048	2048	2048	2048	2048	2048	2048
6	2106	2048	2048	2048	2048	2048	2048	2048	2048	2048	2048
7	2106	2048	2048	2048	2048	2048	2048	2048	2048	2048	2048
8	2106	2048	2048	2048	2048	2048	2048	2048	2048	2048	2048
9	2106	2048	2048	2048	2048	2048	2048	2048	2048	2048	2048
10	2106	2048	2048	2048	2048	2048	2048	2048	2048	2048	2048
11	2106	2048	2048	2048	2048	2048	2048	2048	2048	2048	2048
12	2106	2048	2048	2048	2048	2048	2048	2048	2048	2048	2048
13	2106	2048	2048	2048	2048	2048	2048	2048	2048	2048	2048
14	2106	2048	2048	2048	2048	2048	2048	2048	2048	2048	2048
15	2106	2048	2048	2048	2048	2048	2048	2048	2048	2048	2048
16	2106	2048	2048	2048	2048	2048	2048	2048	2048	2048	2048
17	2106	2048	2048	2048	2048	2048	2048	2048	2048	2048	2048
18	2106	2048	2048	2048	2048	2048	2048	2048	2048	2048	2048
19	2106	2048	2048	2048	2048	2048	2048	2048	2048	2048	2048
20	2106	2048	2048	2048	2048	2048	2048	2048	2048	2048	2048
21	2106	2048	2048	2048	2048	2048	2048	2048	2048	2048	2048
22	2106	2048	2048	2048	2048	2048	2048	2048	2048	2048	2048
23	2106	2048	2048	2048	2048	2048	2048	2048	2048	2048	2048
24	2106	2048	2048	2048	2048	2048	2048	2048	2048	2048	2048
25	2106	2048	2048	2048	2048	2048	2048	2048	2048	2048	2048
26	2106	2048	2048	2048	2048	2048	2048	2048	2048	2048	2048
27	2106	2048	2048	2048	2048	2048	2048	2048	2048	2048	2048
28	2106	2048	2048	2048	2048	2048	2048	2048	2048	2048	2048
29	2106	2048	2048	2048	2048	2048	2048	2048	2048	2048	2048
30	2106	2048	2048	2048	2048	2048	2048	2048	2048	2048	2048
31	2106	2048	2048	2048	2048	2048	2048	2048	2048	2048	2048
32	2106	2048	2048	2048	2048	2048	2048	2048	2048	2048	2048
33	2106	2048	2048	2048	2048	2048	2048	2048	2048	2048	2048
34	2106	2048	2048	2048	2048	2048	2048	2048	2048	2048	2048
35	2106	2048	2048	2048	2048	2048	2048	2048	2048	2048	2048
36	2106	2048	2048	2048	2048	2048	2048	2048	2048	2048	2048
37	2106	2048	2048	2048	2048	2048	2048	2048	2048	2048	2048
38	2106	2048	2048	2048	2048	2048	2048	2048	2048	2048	2048
39	2106	2048	2048	2048	2048	2048	2048	2048	2048	2048	2048
40	2106	2048	2048	2048	2048	2048	2048	2048	2048	2048	2048
41	2106	2048	2048	2048	2048	2048	2048	2048	2048	2048	2048
42	2106	2048	2048	2048	2048	2048	2048	2048	2048	2048	2048
43	2106	2048	2048	2048	2048	2048	2048	2048	2048	2048	2048
44	2106	2048	2048	2048	2048	2048	2048	2048	2048	2048	2048
45	2106	2048	2048	2048	2048	2048	2048	2048	2048	2048	2048



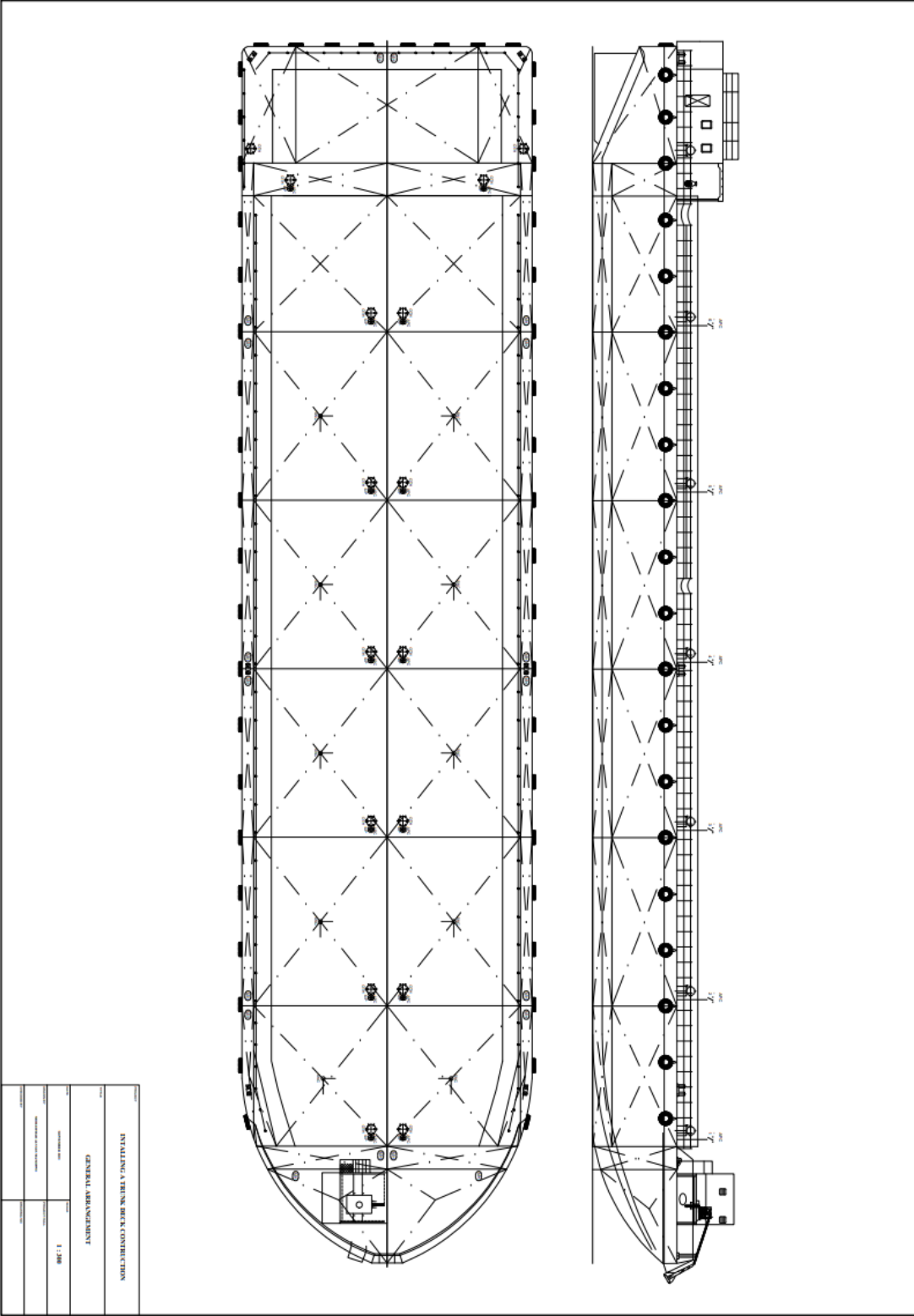
Lampiran 2 Gambar *Transversal Web Section*

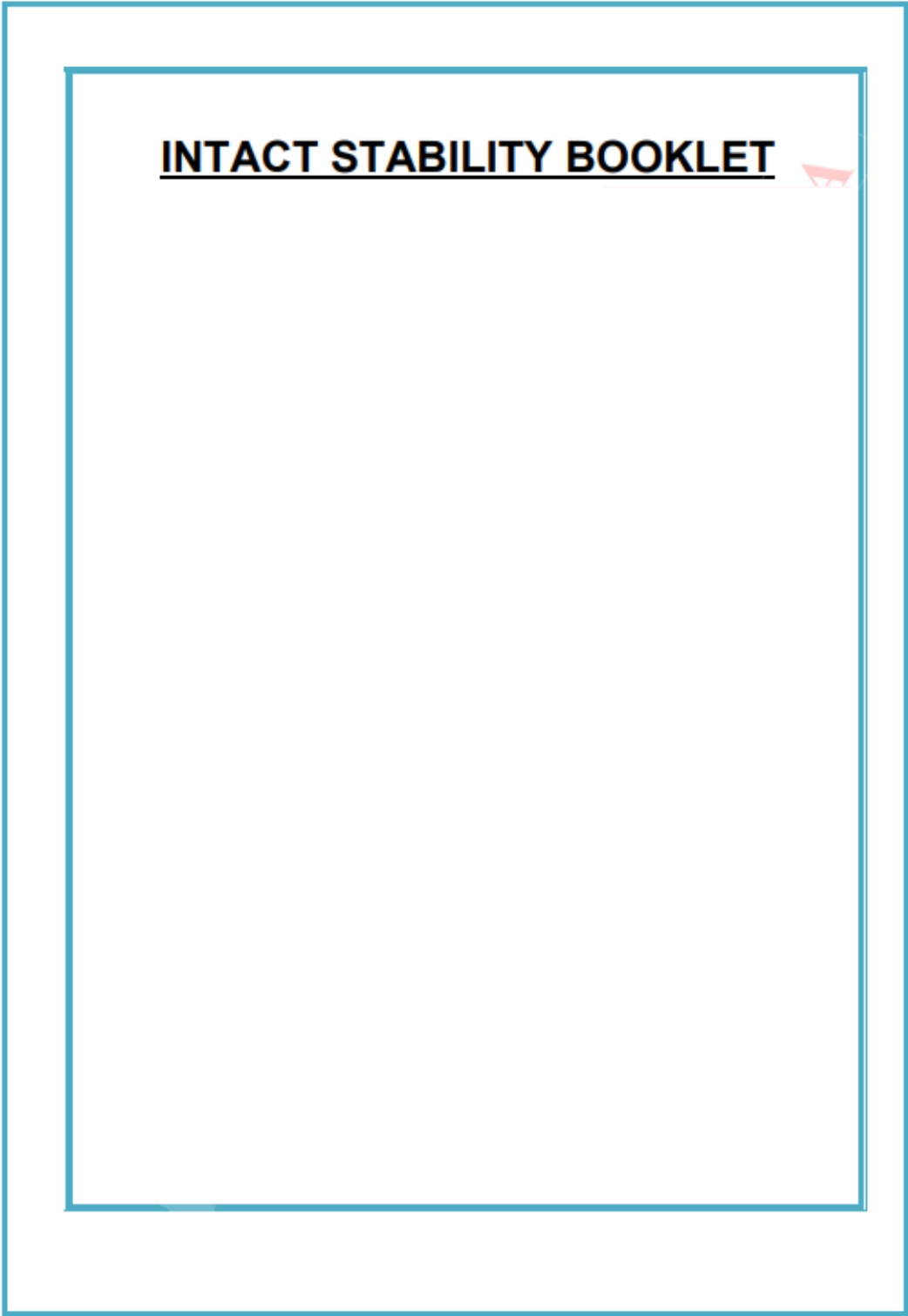


Lampiran 3 Gambar *Profil Construction*



Lampiran 4 Gambar *General Arrangement*





Lampiran 6 Ukuran Tanki-tanki Model CPO Barge

Name	Type	Intact Perm %	Damaged Perm %	Specific gravity	Fluid Type	Boundary Surfaces	Aft m	Fore m	F Port m	F Stbd m	F Top m	F Bott m	A Port m	A Stbd m	A Top m	A Bottom m	Formed
FWT P	Tank	100	100	1	Fresh Water	none	0	7.62	-9.449	-5.94	5.486	0	DITTO	DITTO	DITTO	DITTO	Yes
FWT S	Tank	100	100	1	Fresh Water	none	0	7.62	5.94	9.449	5.486	0	DITTO	DITTO	DITTO	DITTO	Yes
SLOP P	Tank	100	100	0.913	Slops	none	7.62	9.753	-8.695	0	5.486	1.26	DITTO	DITTO	DITTO	DITTO	Yes
SLOP S	Tank	100	100	0.913	Slops	none	7.62	9.753	0	8.695	5.486	1.26	DITTO	DITTO	DITTO	DITTO	Yes
COT 6 P	Tank	100	100	0.8883	ANS Crude	none	9.753	18.592	-8.695	0	5.486	1.26	DITTO	DITTO	DITTO	DITTO	Yes
COT 6 P	Linked Tank	100	100	0.8883	ANS Crude	none	9.753	18.592	-7.521	0	6.846	5.486	DITTO	DITTO	DITTO	DITTO	Yes
COT 6 S	Tank	100	100	0.8883	ANS Crude	none	9.753	18.592	0	8.695	5.486	1.26	DITTO	DITTO	DITTO	DITTO	Yes
COT 6 S	Linked Tank	100	100	0.8883	ANS Crude	none	9.753	18.592	0	7.521	6.846	5.486	DITTO	DITTO	DITTO	DITTO	Yes
COT 5 P	Tank	100	100	0.8883	ANS Crude	none	18.592	29.565	-8.695	0	5.486	1.26	DITTO	DITTO	DITTO	DITTO	Yes
COT 5 P	Linked Tank	100	100	0.8883	ANS Crude	none	18.592	29.565	-7.521	0	6.846	5.486	DITTO	DITTO	DITTO	DITTO	Yes
COT 5 S	Tank	100	100	0.8883	ANS Crude	none	18.592	29.565	0	8.695	5.486	1.26	DITTO	DITTO	DITTO	DITTO	Yes
COT 5 S	Linked Tank	100	100	0.8883	ANS Crude	none	18.592	29.565	0	7.521	6.846	5.486	DITTO	DITTO	DITTO	DITTO	Yes
COT 4 P	Tank	100	100	0.8883	ANS Crude	none	29.565	40.538	-8.695	0	5.486	1.26	DITTO	DITTO	DITTO	DITTO	Yes
COT 4 P	Linked Tank	100	100	0.8883	ANS Crude	none	29.565	40.538	-7.521	0	6.846	5.486	DITTO	DITTO	DITTO	DITTO	Yes
COT 4 S	Tank	100	100	0.8883	ANS Crude	none	29.565	40.538	0	8.695	5.486	1.26	DITTO	DITTO	DITTO	DITTO	Yes
COT 4 S	Linked Tank	100	100	0.8883	ANS Crude	none	29.565	40.538	0	7.521	6.846	5.486	DITTO	DITTO	DITTO	DITTO	Yes
COT 3 P	Tank	100	100	0.8883	ANS Crude	none	40.538	51.511	-8.695	0	5.486	1.26	DITTO	DITTO	DITTO	DITTO	Yes
COT 3 P	Linked Tank	100	100	0.8883	ANS Crude	none	40.538	51.511	-7.521	0	6.846	5.486	DITTO	DITTO	DITTO	DITTO	Yes
COT 3 S	Tank	100	100	0.8883	ANS Crude	none	40.538	51.511	0	8.695	5.486	1.26	DITTO	DITTO	DITTO	DITTO	Yes
COT 3 S	Linked Tank	100	100	0.8883	ANS Crude	none	40.538	51.511	0	7.521	6.846	5.486	DITTO	DITTO	DITTO	DITTO	Yes
COT 2 P	Tank	100	100	0.8883	ANS Crude	none	51.511	62.483	-8.695	0	5.486	1.26	DITTO	DITTO	DITTO	DITTO	Yes
COT 2 P	Linked Tank	100	100	0.8883	ANS Crude	none	51.511	62.483	-7.521	0	6.846	5.486	DITTO	DITTO	DITTO	DITTO	Yes
COT 2 S	Tank	100	100	0.8883	ANS Crude	none	51.511	62.483	0	8.695	5.486	1.26	DITTO	DITTO	DITTO	DITTO	Yes
COT 2 S	Linked Tank	100	100	0.8883	ANS Crude	none	51.511	62.483	0	7.521	6.846	5.486	DITTO	DITTO	DITTO	DITTO	Yes
COT 1 P	Tank	100	100	0.8883	ANS Crude	none	62.483	65.432	-8.695	0	5.486	1.26	DITTO	DITTO	DITTO	DITTO	Yes
COT 1 P	Linked Tank	100	100	0.8883	ANS Crude	none	62.483	65.432	-7.521	0	6.846	5.486	DITTO	DITTO	DITTO	DITTO	Yes
COT 1 P	Linked Tank	100	100	0.8883	ANS Crude	none	65.432	71.628	-7.23	0	5.486	1.26	-7.521	DITTO	DITTO	DITTO	Yes
COT 1 P	Linked Tank	100	100	0.8883	ANS Crude	none	65.432	71.628	-5.987	0	6.846	5.486	-7.521	DITTO	DITTO	DITTO	Yes
COT 1 S	Tank	100	100	0.8883	ANS Crude	none	62.483	65.432	0	8.695	5.486	1.26	DITTO	DITTO	DITTO	DITTO	Yes
COT 1 S	Linked Tank	100	100	0.8883	ANS Crude	none	62.483	65.432	0	7.521	6.846	5.486	DITTO	DITTO	DITTO	DITTO	Yes
COT 1 S	Linked Tank	100	100	0.8883	ANS Crude	none	65.432	71.628	0	7.23	5.486	1.26	DITTO	7.521	DITTO	DITTO	Yes
COT 1 S	Linked Tank	100	100	0.8883	ANS Crude	none	65.432	71.628	0	5.987	6.846	5.486	DITTO	7.521	DITTO	DITTO	Yes
FPT P	Tank	100	100	1.025	Sea Water	none	73.152	79.248	-8.695	0	5.486	0	DITTO	DITTO	DITTO	DITTO	Yes
FPT S	Tank	100	100	1.025	Sea Water	none	73.152	79.248	0	8.695	5.486	0	DITTO	DITTO	DITTO	DITTO	Yes

Lampiran 7 Analisis Hidrostatik

Hydrostatics - H-OIL BARGE 260 FEET ADD TRUNK

Damage Case - Intact

Fixed Trim = 0 m (+ve by stern)
 Specific gravity = 1.025; (Density = 1.025 tonne/m³)

Draft Amidships m	Displacement t	Heel deg	Draft at FP m	Draft at AP m	Draft at LCF m	Trim (+ve by stern) m	WL Length m	Beam max extents on WL m
0.500	580.9	0.0	0.500	0.500	0.500	0.000	67.486	18.687
0.524	610.2	0.0	0.524	0.524	0.524	0.000	67.622	18.732
0.547	639.6	0.0	0.547	0.547	0.547	0.000	67.758	18.778
0.571	669.2	0.0	0.571	0.571	0.571	0.000	67.894	18.823
0.594	699.0	0.0	0.594	0.594	0.594	0.000	68.030	18.868
0.618	728.8	0.0	0.618	0.618	0.618	0.000	68.156	18.898
0.642	758.8	0.0	0.642	0.642	0.642	0.000	68.282	18.898
0.665	788.7	0.0	0.665	0.665	0.665	0.000	68.408	18.898
0.689	818.8	0.0	0.689	0.689	0.689	0.000	68.534	18.898
0.713	848.9	0.0	0.713	0.713	0.713	0.000	68.660	18.898
0.736	879.1	0.0	0.736	0.736	0.736	0.000	68.786	18.898
0.760	909.4	0.0	0.760	0.760	0.760	0.000	68.910	18.898
0.783	939.7	0.0	0.783	0.783	0.783	0.000	69.023	18.898
0.807	970.1	0.0	0.807	0.807	0.807	0.000	69.136	18.898
0.831	1001	0.0	0.831	0.831	0.831	0.000	69.250	18.898
0.854	1031	0.0	0.854	0.854	0.854	0.000	69.363	18.898
0.878	1062	0.0	0.878	0.878	0.878	0.000	69.476	18.898
0.902	1092	0.0	0.902	0.902	0.902	0.000	69.589	18.898
0.925	1123	0.0	0.925	0.925	0.925	0.000	69.702	18.898
0.949	1154	0.0	0.949	0.949	0.949	0.000	69.815	18.898
0.972	1184	0.0	0.972	0.972	0.972	0.000	69.918	18.898
0.996	1215	0.0	0.996	0.996	0.996	0.000	70.021	18.898
1.020	1246	0.0	1.020	1.020	1.020	0.000	70.125	18.898
1.043	1277	0.0	1.043	1.043	1.043	0.000	70.228	18.898
1.067	1308	0.0	1.067	1.067	1.067	0.000	70.332	18.898
1.090	1339	0.0	1.090	1.090	1.090	0.000	70.435	18.898
1.114	1370	0.0	1.114	1.114	1.114	0.000	70.539	18.898
1.138	1401	0.0	1.138	1.138	1.138	0.000	70.642	18.898
1.161	1432	0.0	1.161	1.161	1.161	0.000	70.745	18.898
1.185	1463	0.0	1.185	1.185	1.185	0.000	70.846	18.898
1.209	1495	0.0	1.209	1.209	1.209	0.000	70.943	18.898
1.232	1526	0.0	1.232	1.232	1.232	0.000	71.040	18.898
1.256	1557	0.0	1.256	1.256	1.256	0.000	71.136	18.898
1.279	1589	0.0	1.279	1.279	1.279	0.000	71.233	18.898
1.303	1620	0.0	1.303	1.303	1.303	0.000	71.330	18.898
1.327	1652	0.0	1.327	1.327	1.327	0.000	71.426	18.898
1.350	1683	0.0	1.350	1.350	1.350	0.000	71.523	18.898
1.374	1715	0.0	1.374	1.374	1.374	0.000	71.620	18.898
1.397	1746	0.0	1.397	1.397	1.397	0.000	71.716	18.898
1.421	1778	0.0	1.421	1.421	1.421	0.000	71.813	18.898
1.445	1810	0.0	1.445	1.445	1.445	0.000	71.908	18.898
1.468	1842	0.0	1.468	1.468	1.468	0.000	72.001	18.898
1.492	1873	0.0	1.492	1.492	1.492	0.000	72.094	18.898
1.516	1905	0.0	1.516	1.516	1.516	0.000	72.187	18.898
1.539	1937	0.0	1.539	1.539	1.539	0.000	72.280	18.898
1.563	1969	0.0	1.563	1.563	1.563	0.000	72.373	18.898
1.586	2001	0.0	1.586	1.586	1.586	0.000	72.466	18.898
1.610	2033	0.0	1.610	1.610	1.610	0.000	72.559	18.898

Draft Amidships m	Displacement t	Heel deg	Draft at FP m	Draft at AP m	Draft at LCF m	Trim (+ve by stern) m	WL Length m	Beam max extents on WL m
1.634	2065	0.0	1.634	1.634	1.634	0.000	72.652	18.898
1.657	2097	0.0	1.657	1.657	1.657	0.000	72.745	18.898
1.681	2129	0.0	1.681	1.681	1.681	0.000	72.838	18.898
1.705	2162	0.0	1.705	1.705	1.705	0.000	72.931	18.898
1.728	2194	0.0	1.728	1.728	1.728	0.000	73.023	18.898
1.752	2226	0.0	1.752	1.752	1.752	0.000	73.114	18.898
1.775	2258	0.0	1.775	1.775	1.775	0.000	73.204	18.898
1.799	2291	0.0	1.799	1.799	1.799	0.000	73.294	18.898
1.823	2323	0.0	1.823	1.823	1.823	0.000	73.385	18.898
1.846	2355	0.0	1.846	1.846	1.846	0.000	73.475	18.898
1.870	2388	0.0	1.870	1.870	1.870	0.000	73.565	18.898
1.893	2420	0.0	1.893	1.893	1.893	0.000	73.656	18.898
1.917	2453	0.0	1.917	1.917	1.917	0.000	73.746	18.898
1.941	2486	0.0	1.941	1.941	1.941	0.000	73.837	18.898
1.964	2518	0.0	1.964	1.964	1.964	0.000	73.927	18.898
1.988	2551	0.0	1.988	1.988	1.988	0.000	74.017	18.898
2.012	2584	0.0	2.012	2.012	2.012	0.000	74.108	18.898
2.035	2616	0.0	2.035	2.035	2.035	0.000	74.198	18.898
2.059	2649	0.0	2.059	2.059	2.059	0.000	74.285	18.898
2.082	2682	0.0	2.082	2.082	2.082	0.000	74.373	18.898
2.106	2715	0.0	2.106	2.106	2.106	0.000	74.461	18.898
2.130	2748	0.0	2.130	2.130	2.130	0.000	74.549	18.898
2.153	2781	0.0	2.153	2.153	2.153	0.000	74.637	18.898
2.177	2814	0.0	2.177	2.177	2.177	0.000	74.724	18.898
2.201	2847	0.0	2.201	2.201	2.201	0.000	74.812	18.898
2.224	2880	0.0	2.224	2.224	2.224	0.000	74.900	18.898
2.248	2913	0.0	2.248	2.248	2.248	0.000	74.988	18.898
2.271	2946	0.0	2.271	2.271	2.271	0.000	75.076	18.898
2.295	2979	0.0	2.295	2.295	2.295	0.000	75.163	18.898
2.319	3012	0.0	2.319	2.319	2.319	0.000	75.251	18.898
2.342	3045	0.0	2.342	2.342	2.342	0.000	75.340	18.898
2.366	3079	0.0	2.366	2.366	2.366	0.000	75.429	18.898
2.389	3112	0.0	2.389	2.389	2.389	0.000	75.513	18.898
2.413	3145	0.0	2.413	2.413	2.413	0.000	75.596	18.898
2.437	3179	0.0	2.437	2.437	2.437	0.000	75.679	18.898
2.460	3212	0.0	2.460	2.460	2.460	0.000	75.762	18.898
2.484	3245	0.0	2.484	2.484	2.484	0.000	75.845	18.898
2.508	3279	0.0	2.508	2.508	2.508	0.000	75.928	18.898
2.531	3312	0.0	2.531	2.531	2.531	0.000	76.011	18.898
2.555	3346	0.0	2.555	2.555	2.555	0.000	76.094	18.898
2.578	3380	0.0	2.578	2.578	2.578	0.000	76.178	18.898
2.602	3413	0.0	2.602	2.602	2.602	0.000	76.264	18.898
2.626	3447	0.0	2.626	2.626	2.626	0.000	76.349	18.898
2.649	3481	0.0	2.649	2.649	2.649	0.000	76.434	18.898
2.673	3514	0.0	2.673	2.673	2.673	0.000	76.520	18.898
2.696	3548	0.0	2.696	2.696	2.696	0.000	76.608	18.898
2.720	3582	0.0	2.720	2.720	2.720	0.000	76.695	18.898
2.744	3616	0.0	2.744	2.744	2.744	0.000	76.784	18.898
2.767	3650	0.0	2.767	2.767	2.767	0.000	76.873	18.898
2.791	3684	0.0	2.791	2.791	2.791	0.000	76.960	18.898
2.815	3717	0.0	2.815	2.815	2.815	0.000	77.043	18.898
2.838	3751	0.0	2.838	2.838	2.838	0.000	77.125	18.898
2.862	3785	0.0	2.862	2.862	2.862	0.000	77.206	18.898
2.885	3820	0.0	2.885	2.885	2.885	0.000	77.286	18.898
2.909	3854	0.0	2.909	2.909	2.909	0.000	77.367	18.898
2.933	3888	0.0	2.933	2.933	2.933	0.000	77.447	18.898
2.956	3922	0.0	2.956	2.956	2.956	0.000	77.529	18.898
2.980	3956	0.0	2.980	2.980	2.980	0.000	77.606	18.898

Draft Amidships m	Displacement t	Heel deg	Draft at FP m	Draft at AP m	Draft at LCF m	Trim (+ve by stern) m	WL Length m	Beam max extents on WL m
3.004	3990	0.0	3.004	3.004	3.004	0.000	77.683	18.898
3.027	4025	0.0	3.027	3.027	3.027	0.000	77.765	18.898
3.051	4059	0.0	3.051	3.051	3.051	0.000	77.840	18.898
3.074	4093	0.0	3.074	3.074	3.074	0.000	77.857	18.898
3.098	4127	0.0	3.098	3.098	3.098	0.000	77.888	18.898
3.122	4162	0.0	3.122	3.122	3.122	0.000	77.912	18.898
3.145	4196	0.0	3.145	3.145	3.145	0.000	77.936	18.898
3.169	4230	0.0	3.169	3.169	3.169	0.000	77.959	18.898
3.192	4265	0.0	3.192	3.192	3.192	0.000	77.983	18.898
3.216	4299	0.0	3.216	3.216	3.216	0.000	78.007	18.898
3.240	4334	0.0	3.240	3.240	3.240	0.000	78.031	18.898
3.263	4368	0.0	3.263	3.263	3.263	0.000	78.035	18.898
3.287	4402	0.0	3.287	3.287	3.287	0.000	78.059	18.898
3.311	4437	0.0	3.311	3.311	3.311	0.000	78.083	18.898
3.334	4471	0.0	3.334	3.334	3.334	0.000	78.106	18.898
3.358	4506	0.0	3.358	3.358	3.358	0.000	78.130	18.898
3.381	4540	0.0	3.381	3.381	3.381	0.000	78.154	18.898
3.405	4574	0.0	3.405	3.405	3.405	0.000	78.178	18.898
3.429	4609	0.0	3.429	3.429	3.429	0.000	78.202	18.898
3.452	4643	0.0	3.452	3.452	3.452	0.000	78.226	18.898
3.476	4678	0.0	3.476	3.476	3.476	0.000	78.250	18.898
3.499	4712	0.0	3.499	3.499	3.499	0.000	78.274	18.898
3.523	4747	0.0	3.523	3.523	3.523	0.000	78.297	18.898
3.547	4781	0.0	3.547	3.547	3.547	0.000	78.321	18.898
3.570	4816	0.0	3.570	3.570	3.570	0.000	78.345	18.898
3.594	4850	0.0	3.594	3.594	3.594	0.000	78.369	18.898
3.618	4885	0.0	3.618	3.618	3.618	0.000	78.392	18.898
3.641	4919	0.0	3.641	3.641	3.641	0.000	78.414	18.898
3.665	4954	0.0	3.665	3.665	3.665	0.000	78.436	18.898
3.688	4988	0.0	3.688	3.688	3.688	0.000	78.458	18.898
3.712	5023	0.0	3.712	3.712	3.712	0.000	78.480	18.898
3.736	5057	0.0	3.736	3.736	3.736	0.000	78.501	18.898
3.759	5092	0.0	3.759	3.759	3.759	0.000	78.523	18.898
3.783	5126	0.0	3.783	3.783	3.783	0.000	78.545	18.898
3.807	5161	0.0	3.807	3.807	3.807	0.000	78.567	18.898
3.830	5195	0.0	3.830	3.830	3.830	0.000	78.589	18.898
3.854	5230	0.0	3.854	3.854	3.854	0.000	78.611	18.898
3.877	5265	0.0	3.877	3.877	3.877	0.000	78.633	18.898
3.901	5299	0.0	3.901	3.901	3.901	0.000	78.655	18.898
3.925	5334	0.0	3.925	3.925	3.925	0.000	78.677	18.898
3.948	5368	0.0	3.948	3.948	3.948	0.000	78.699	18.898
3.972	5403	0.0	3.972	3.972	3.972	0.000	78.721	18.898
3.995	5438	0.0	3.995	3.995	3.995	0.000	78.743	18.898
4.019	5472	0.0	4.019	4.019	4.019	0.000	78.765	18.898
4.043	5507	0.0	4.043	4.043	4.043	0.000	78.787	18.898
4.066	5541	0.0	4.066	4.066	4.066	0.000	78.809	18.898
4.090	5576	0.0	4.090	4.090	4.090	0.000	78.830	18.898
4.114	5611	0.0	4.114	4.114	4.114	0.000	78.852	18.898
4.137	5645	0.0	4.137	4.137	4.137	0.000	78.874	18.898
4.161	5680	0.0	4.161	4.161	4.161	0.000	78.896	18.898
4.184	5715	0.0	4.184	4.184	4.184	0.000	78.918	18.898
4.208	5749	0.0	4.208	4.208	4.208	0.000	78.940	18.898
4.232	5784	0.0	4.232	4.232	4.232	0.000	78.962	18.898
4.255	5819	0.0	4.255	4.255	4.255	0.000	78.984	18.898
4.279	5853	0.0	4.279	4.279	4.279	0.000	79.006	18.898
4.303	5888	0.0	4.303	4.303	4.303	0.000	79.028	18.898
4.326	5923	0.0	4.326	4.326	4.326	0.000	79.050	18.898
4.350	5958	0.0	4.350	4.350	4.350	0.000	79.072	18.898

Draft Amidships m	Displacement t	Heel deg	Draft at FP m	Draft at AP m	Draft at LCF m	Trim (+ve by stern) m	WL Length m	Beam max extents on WL m
4.373	5992	0.0	4.373	4.373	4.373	0.000	79.094	18.898
4.397	6027	0.0	4.397	4.397	4.397	0.000	79.116	18.898
4.421	6062	0.0	4.421	4.421	4.421	0.000	79.138	18.898
4.444	6096	0.0	4.444	4.444	4.444	0.000	79.160	18.898
4.468	6131	0.0	4.468	4.468	4.468	0.000	79.181	18.898
4.491	6166	0.0	4.491	4.491	4.491	0.000	79.203	18.898
4.515	6201	0.0	4.515	4.515	4.515	0.000	79.225	18.898
4.539	6235	0.0	4.539	4.539	4.539	0.000	79.247	18.898
4.562	6270	0.0	4.562	4.562	4.562	0.000	79.269	18.898
4.586	6305	0.0	4.586	4.586	4.586	0.000	79.248	18.898
4.610	6340	0.0	4.610	4.610	4.610	0.000	79.248	18.898
4.633	6375	0.0	4.633	4.633	4.633	0.000	79.248	18.898
4.657	6409	0.0	4.657	4.657	4.657	0.000	79.248	18.898
4.680	6444	0.0	4.680	4.680	4.680	0.000	79.248	18.898
4.704	6479	0.0	4.704	4.704	4.704	0.000	79.248	18.898
4.728	6514	0.0	4.728	4.728	4.728	0.000	79.248	18.898
4.751	6548	0.0	4.751	4.751	4.751	0.000	79.248	18.898
4.775	6583	0.0	4.775	4.775	4.775	0.000	79.248	18.898
4.798	6618	0.0	4.798	4.798	4.798	0.000	79.248	18.898
4.822	6653	0.0	4.822	4.822	4.822	0.000	79.248	18.898
4.846	6688	0.0	4.846	4.846	4.846	0.000	79.248	18.898
4.869	6722	0.0	4.869	4.869	4.869	0.000	79.248	18.898
4.893	6757	0.0	4.893	4.893	4.893	0.000	79.248	18.898
4.917	6792	0.0	4.917	4.917	4.917	0.000	79.248	18.898
4.940	6827	0.0	4.940	4.940	4.940	0.000	79.248	18.898
4.964	6861	0.0	4.964	4.964	4.964	0.000	79.248	18.898
4.987	6896	0.0	4.987	4.987	4.987	0.000	79.248	18.898
5.011	6931	0.0	5.011	5.011	5.011	0.000	79.248	18.898
5.035	6966	0.0	5.035	5.035	5.035	0.000	79.248	18.898
5.058	7001	0.0	5.058	5.058	5.058	0.000	79.248	18.898
5.082	7035	0.0	5.082	5.082	5.082	0.000	79.248	18.898
5.106	7070	0.0	5.106	5.106	5.106	0.000	79.248	18.898
5.129	7105	0.0	5.129	5.129	5.129	0.000	79.248	18.898
5.153	7140	0.0	5.153	5.153	5.153	0.000	79.248	18.898
5.176	7174	0.0	5.176	5.176	5.176	0.000	79.248	18.898
5.200	7209	0.0	5.200	5.200	5.200	0.000	79.248	18.898

Draft Amidships m	Wetted Area m ²	Waterpl. Area m ²	Prismatic coeff. (Cp)	Block coeff. (Cb)	Max Sect. area coeff. (Cm)	Waterpl. area coeff. (Cwp)	LCB from zero pt. (+ve fwd) m	LCF from zero pt. (+ve fwd) m
0.500	1233.079	1207.835	0.923	0.899	0.974	0.958	37.780	38.299

Draft Amidships m	Wetted Area m ²	Waterpl. Area m ²	Prismatic coeff. (Cp)	Block coeff. (Cb)	Max Sect. area coeff. (Cm)	Waterpl. area coeff. (Cwp)	LCB from zero pt. (+ve fwd) m	LCF from zero pt. (+ve fwd) m
0.524	1240.029	1213.502	0.923	0.898	0.973	0.958	37.806	38.321
0.547	1247.006	1219.192	0.923	0.896	0.971	0.958	37.830	38.343
0.571	1254.000	1224.901	0.922	0.895	0.970	0.958	37.854	38.365
0.594	1260.840	1230.457	0.922	0.894	0.969	0.959	37.876	38.383
0.618	1267.046	1234.841	0.922	0.893	0.969	0.959	37.897	38.396
0.642	1272.758	1237.665	0.922	0.894	0.970	0.959	37.917	38.408
0.665	1278.301	1240.320	0.921	0.895	0.971	0.959	37.936	38.424
0.689	1283.860	1242.980	0.921	0.895	0.972	0.960	37.954	38.440
0.713	1289.428	1245.633	0.921	0.896	0.973	0.960	37.972	38.456
0.736	1295.016	1248.302	0.920	0.896	0.974	0.960	37.989	38.472
0.760	1300.603	1250.948	0.920	0.897	0.975	0.961	38.005	38.487
0.783	1305.861	1253.251	0.920	0.897	0.976	0.961	38.021	38.494
0.807	1311.132	1255.556	0.919	0.898	0.976	0.961	38.036	38.501
0.831	1316.410	1257.851	0.919	0.898	0.977	0.961	38.051	38.508
0.854	1321.703	1260.160	0.919	0.898	0.978	0.961	38.065	38.515
0.878	1327.003	1262.479	0.919	0.899	0.978	0.962	38.078	38.523
0.902	1332.308	1264.779	0.918	0.899	0.979	0.962	38.090	38.530
0.925	1337.618	1267.072	0.918	0.899	0.979	0.962	38.102	38.538
0.949	1342.941	1269.377	0.918	0.899	0.980	0.962	38.114	38.545
0.972	1348.081	1271.491	0.917	0.899	0.980	0.962	38.125	38.548
0.996	1353.291	1273.707	0.917	0.899	0.981	0.963	38.136	38.544
1.020	1358.386	1275.751	0.917	0.900	0.981	0.963	38.146	38.545
1.043	1363.488	1277.792	0.917	0.900	0.982	0.963	38.155	38.545
1.067	1368.604	1279.845	0.916	0.900	0.982	0.963	38.165	38.546
1.090	1373.735	1281.910	0.916	0.900	0.982	0.963	38.174	38.547
1.114	1378.880	1283.986	0.916	0.900	0.983	0.963	38.182	38.548
1.138	1384.038	1286.072	0.915	0.900	0.983	0.963	38.191	38.550
1.161	1389.200	1288.148	0.915	0.900	0.983	0.964	38.199	38.551
1.185	1394.324	1290.172	0.915	0.900	0.984	0.964	38.207	38.551
1.209	1399.291	1292.026	0.915	0.900	0.984	0.964	38.214	38.547
1.232	1404.271	1293.887	0.914	0.900	0.984	0.964	38.221	38.543
1.256	1409.197	1295.703	0.914	0.900	0.985	0.964	38.227	38.538
1.279	1414.191	1297.569	0.914	0.900	0.985	0.964	38.233	38.535
1.303	1419.198	1299.447	0.913	0.900	0.985	0.964	38.239	38.532
1.327	1424.207	1301.316	0.913	0.900	0.986	0.964	38.245	38.528
1.350	1429.290	1303.350	0.913	0.900	0.986	0.964	38.250	38.520
1.374	1434.321	1305.233	0.912	0.900	0.986	0.964	38.255	38.517
1.397	1439.364	1307.127	0.912	0.900	0.986	0.964	38.259	38.513
1.421	1444.420	1309.031	0.912	0.899	0.987	0.965	38.264	38.510
1.445	1449.409	1310.861	0.911	0.899	0.987	0.965	38.268	38.505
1.468	1454.311	1312.596	0.911	0.899	0.987	0.965	38.272	38.497
1.492	1459.216	1314.324	0.911	0.899	0.987	0.965	38.276	38.489
1.516	1464.123	1316.040	0.911	0.899	0.987	0.965	38.280	38.481
1.539	1469.040	1317.763	0.910	0.899	0.988	0.965	38.283	38.474
1.563	1473.966	1319.491	0.910	0.899	0.988	0.965	38.286	38.466
1.586	1478.903	1321.223	0.910	0.899	0.988	0.965	38.289	38.459
1.610	1483.849	1322.960	0.909	0.898	0.988	0.965	38.292	38.452
1.634	1488.805	1324.702	0.909	0.898	0.988	0.965	38.295	38.446
1.657	1493.772	1326.456	0.909	0.898	0.988	0.965	38.297	38.439
1.681	1498.816	1328.385	0.908	0.898	0.989	0.965	38.299	38.428
1.705	1503.761	1330.100	0.908	0.898	0.989	0.965	38.301	38.420
1.728	1508.610	1331.709	0.908	0.897	0.989	0.965	38.303	38.409
1.752	1513.462	1333.318	0.907	0.897	0.989	0.965	38.305	38.398
1.775	1518.325	1334.935	0.907	0.897	0.989	0.965	38.306	38.387
1.799	1523.198	1336.561	0.907	0.897	0.989	0.965	38.307	38.376
1.823	1528.082	1338.194	0.906	0.897	0.989	0.965	38.308	38.366
1.846	1532.975	1339.834	0.906	0.896	0.990	0.965	38.308	38.356

Draft Amidships m	Wetted Area m ²	Waterpl. Area m ²	Prismatic coeff. (Cp)	Block coeff. (Cb)	Max Sect. area coeff. (Cm)	Waterpl. area coeff. (Cwp)	LCB from zero pt. (+ve fwd) m	LCF from zero pt. (+ve fwd) m
1.870	1537.879	1341.480	0.905	0.896	0.990	0.965	38.309	38.346
1.893	1542.792	1343.132	0.905	0.896	0.990	0.965	38.309	38.336
1.917	1547.697	1344.757	0.905	0.896	0.990	0.965	38.310	38.326
1.941	1552.606	1346.379	0.904	0.895	0.990	0.965	38.310	38.315
1.964	1557.526	1348.005	0.904	0.895	0.990	0.965	38.310	38.306
1.988	1562.454	1349.637	0.904	0.895	0.990	0.965	38.310	38.296
2.012	1567.313	1351.195	0.903	0.895	0.990	0.965	38.310	38.284
2.035	1572.184	1352.862	0.903	0.894	0.991	0.965	38.309	38.266
2.059	1577.003	1354.377	0.903	0.894	0.991	0.965	38.309	38.252
2.082	1581.843	1355.910	0.902	0.894	0.991	0.965	38.308	38.239
2.106	1586.694	1357.452	0.902	0.894	0.991	0.965	38.307	38.226
2.130	1591.556	1359.002	0.902	0.893	0.991	0.965	38.306	38.213
2.153	1596.417	1360.543	0.901	0.893	0.991	0.965	38.305	38.200
2.177	1601.275	1362.068	0.901	0.893	0.991	0.965	38.304	38.186
2.201	1606.142	1363.598	0.901	0.893	0.991	0.965	38.303	38.173
2.224	1611.017	1365.134	0.900	0.892	0.991	0.964	38.302	38.160
2.248	1615.902	1366.674	0.900	0.892	0.991	0.964	38.300	38.147
2.271	1620.793	1368.217	0.899	0.892	0.992	0.964	38.298	38.134
2.295	1625.693	1369.762	0.899	0.892	0.992	0.964	38.296	38.122
2.319	1630.600	1371.309	0.899	0.891	0.992	0.964	38.294	38.110
2.342	1635.437	1372.778	0.898	0.891	0.992	0.964	38.292	38.096
2.366	1640.256	1374.230	0.898	0.891	0.992	0.964	38.290	38.080
2.389	1645.175	1375.882	0.898	0.890	0.992	0.964	38.288	38.060
2.413	1650.051	1377.389	0.897	0.890	0.992	0.964	38.285	38.044
2.437	1654.915	1378.867	0.897	0.890	0.992	0.964	38.283	38.028
2.460	1659.784	1380.347	0.897	0.890	0.992	0.964	38.280	38.011
2.484	1664.661	1381.833	0.896	0.889	0.992	0.964	38.277	37.994
2.508	1669.544	1383.322	0.896	0.889	0.992	0.964	38.274	37.977
2.531	1674.433	1384.813	0.896	0.889	0.992	0.964	38.271	37.961
2.555	1679.318	1386.295	0.895	0.889	0.992	0.964	38.268	37.944
2.578	1684.210	1387.790	0.895	0.888	0.993	0.964	38.265	37.928
2.602	1689.118	1389.288	0.895	0.888	0.993	0.964	38.261	37.912
2.626	1694.033	1390.788	0.894	0.888	0.993	0.964	38.258	37.896
2.649	1698.954	1392.288	0.894	0.887	0.993	0.964	38.254	37.881
2.673	1703.881	1393.790	0.893	0.887	0.993	0.964	38.251	37.865
2.696	1708.751	1395.230	0.893	0.887	0.993	0.964	38.247	37.848
2.720	1713.684	1396.838	0.893	0.886	0.993	0.964	38.243	37.825
2.744	1718.530	1398.241	0.892	0.886	0.993	0.964	38.239	37.806
2.767	1723.386	1399.653	0.892	0.886	0.993	0.963	38.235	37.787
2.791	1728.251	1401.072	0.891	0.885	0.993	0.963	38.231	37.769
2.815	1733.133	1402.499	0.891	0.885	0.993	0.963	38.227	37.750
2.838	1738.059	1403.938	0.891	0.885	0.993	0.963	38.223	37.732
2.862	1743.002	1405.422	0.890	0.885	0.993	0.963	38.219	37.715
2.885	1747.963	1406.920	0.890	0.884	0.993	0.963	38.215	37.699
2.909	1752.699	1408.250	0.890	0.884	0.993	0.963	38.210	37.678
2.933	1757.618	1409.702	0.890	0.884	0.993	0.963	38.205	37.660
2.956	1762.544	1411.158	0.889	0.883	0.994	0.963	38.200	37.643
2.980	1767.478	1412.615	0.889	0.883	0.994	0.963	38.195	37.626
3.004	1772.416	1414.068	0.889	0.883	0.994	0.963	38.190	37.609
3.027	1777.402	1415.688	0.888	0.883	0.994	0.963	38.185	37.588
3.051	1782.022	1416.640	0.888	0.882	0.994	0.963	38.180	37.580
3.074	1786.304	1417.007	0.888	0.883	0.994	0.963	38.175	37.587
3.098	1790.594	1417.382	0.889	0.883	0.994	0.963	38.170	37.593
3.122	1794.893	1417.763	0.889	0.883	0.994	0.963	38.166	37.601
3.145	1799.189	1418.139	0.889	0.884	0.994	0.963	38.161	37.608
3.169	1803.490	1418.521	0.889	0.884	0.994	0.963	38.157	37.615
3.192	1807.799	1418.910	0.890	0.884	0.994	0.963	38.152	37.622

Draft Amidships m	Wetted Area m ²	Waterpl. Area m ²	Prismatic coeff. (Cp)	Block coeff. (Cb)	Max Sect. area coeff. (Cm)	Waterpl. area coeff. (Cwp)	LCB from zero pt. (+ve fwd) m	LCF from zero pt. (+ve fwd) m
3.216	1812.114	1419.304	0.890	0.885	0.994	0.963	38.148	37.630
3.240	1816.434	1419.703	0.890	0.885	0.994	0.963	38.144	37.638
3.263	1820.762	1420.109	0.891	0.886	0.994	0.963	38.140	37.646
3.287	1825.099	1420.524	0.891	0.886	0.994	0.963	38.137	37.655
3.311	1829.444	1420.947	0.891	0.886	0.994	0.963	38.133	37.663
3.334	1833.792	1421.362	0.891	0.886	0.994	0.963	38.129	37.673
3.358	1838.117	1421.728	0.892	0.887	0.994	0.963	38.126	37.682
3.381	1842.454	1422.105	0.892	0.887	0.994	0.963	38.123	37.693
3.405	1846.804	1422.497	0.892	0.887	0.994	0.963	38.119	37.703
3.429	1851.169	1422.904	0.892	0.887	0.994	0.963	38.116	37.714
3.452	1855.548	1423.326	0.893	0.888	0.994	0.963	38.114	37.726
3.476	1859.824	1423.640	0.893	0.888	0.994	0.963	38.111	37.734
3.499	1864.091	1423.943	0.893	0.888	0.995	0.963	38.108	37.743
3.523	1868.363	1424.252	0.893	0.888	0.995	0.963	38.105	37.751
3.547	1872.640	1424.566	0.893	0.889	0.995	0.962	38.103	37.759
3.570	1876.922	1424.886	0.894	0.889	0.995	0.962	38.101	37.768
3.594	1881.218	1425.220	0.894	0.889	0.995	0.962	38.098	37.777
3.618	1885.522	1425.564	0.894	0.889	0.995	0.962	38.096	37.786
3.641	1889.833	1425.916	0.894	0.889	0.995	0.962	38.094	37.796
3.665	1894.152	1426.276	0.894	0.890	0.995	0.962	38.092	37.805
3.688	1898.477	1426.643	0.895	0.890	0.995	0.962	38.090	37.815
3.712	1901.638	1425.755	0.895	0.890	0.995	0.961	38.088	37.790
3.736	1905.922	1426.064	0.895	0.890	0.995	0.961	38.086	37.798
3.759	1910.217	1426.382	0.895	0.891	0.995	0.961	38.084	37.807
3.783	1914.522	1426.711	0.895	0.891	0.995	0.961	38.082	37.816
3.807	1918.839	1427.052	0.895	0.891	0.995	0.961	38.080	37.825
3.830	1923.155	1427.393	0.896	0.891	0.995	0.961	38.079	37.834
3.854	1927.463	1427.724	0.896	0.891	0.995	0.961	38.077	37.843
3.877	1931.781	1428.065	0.896	0.891	0.995	0.961	38.076	37.852
3.901	1936.109	1428.417	0.896	0.892	0.995	0.961	38.074	37.862
3.925	1940.449	1428.781	0.896	0.892	0.995	0.961	38.073	37.872
3.948	1944.801	1429.157	0.896	0.892	0.995	0.961	38.072	37.882
3.972	1949.166	1429.546	0.896	0.892	0.995	0.961	38.070	37.892
3.995	1953.498	1429.901	0.897	0.892	0.995	0.961	38.069	37.902
4.019	1957.769	1430.191	0.897	0.892	0.995	0.961	38.068	37.910
4.043	1962.043	1430.485	0.897	0.893	0.995	0.961	38.067	37.918
4.066	1966.326	1430.788	0.897	0.893	0.995	0.961	38.066	37.926
4.090	1970.616	1431.098	0.897	0.893	0.995	0.961	38.066	37.934
4.114	1974.909	1431.411	0.897	0.893	0.995	0.961	38.065	37.942
4.137	1979.160	1431.674	0.897	0.893	0.995	0.961	38.064	37.949
4.161	1983.412	1431.936	0.897	0.893	0.995	0.960	38.063	37.956
4.184	1987.665	1432.199	0.898	0.893	0.995	0.960	38.063	37.963
4.208	1991.919	1432.463	0.898	0.894	0.995	0.960	38.062	37.970
4.232	1996.173	1432.726	0.898	0.894	0.995	0.960	38.062	37.977
4.255	2000.428	1432.989	0.898	0.894	0.995	0.960	38.061	37.984
4.279	2004.684	1433.253	0.898	0.894	0.996	0.960	38.061	37.991
4.303	2008.940	1433.516	0.898	0.894	0.996	0.960	38.060	37.998
4.326	2012.694	1433.256	0.898	0.894	0.996	0.959	38.060	37.990
4.350	2017.149	1433.722	0.898	0.894	0.996	0.959	38.060	38.003
4.373	2021.545	1434.128	0.898	0.894	0.996	0.959	38.059	38.014
4.397	2025.955	1434.548	0.898	0.894	0.996	0.960	38.059	38.026
4.421	2030.212	1434.812	0.898	0.895	0.996	0.959	38.059	38.033
4.444	2034.505	1435.112	0.899	0.895	0.996	0.959	38.059	38.041
4.468	2038.823	1435.434	0.899	0.895	0.996	0.959	38.059	38.049
4.491	2043.033	1435.647	0.899	0.895	0.996	0.959	38.059	38.055
4.515	2047.366	1435.982	0.899	0.895	0.996	0.959	38.059	38.064
4.539	2051.638	1436.257	0.899	0.895	0.996	0.959	38.059	38.071

Draft Amidships m	Wetted Area m ²	Waterpl. Area m ²	Prismatic coeff. (Cp)	Block coeff. (Cb)	Max Sect. area coeff. (Cm)	Waterpl. area coeff. (Cwp)	LCB from zero pt. (+ve fwd) m	LCF from zero pt. (+ve fwd) m
4.562	2055.910	1436.531	0.899	0.895	0.996	0.959	38.059	38.078
4.586	2060.162	1436.569	0.899	0.896	0.996	0.959	38.059	38.079
4.610	2064.327	1436.565	0.900	0.896	0.996	0.959	38.059	38.079
4.633	2068.492	1436.562	0.900	0.896	0.996	0.959	38.059	38.079
4.657	2072.656	1436.558	0.900	0.897	0.996	0.959	38.059	38.079
4.680	2076.821	1436.554	0.901	0.897	0.996	0.959	38.059	38.079
4.704	2080.986	1436.551	0.901	0.897	0.996	0.959	38.059	38.079
4.728	2085.150	1436.547	0.901	0.898	0.996	0.959	38.060	38.079
4.751	2089.315	1436.543	0.902	0.898	0.996	0.959	38.060	38.079
4.775	2093.479	1436.539	0.902	0.898	0.996	0.959	38.060	38.078
4.798	2097.644	1436.536	0.902	0.898	0.996	0.959	38.060	38.078
4.822	2101.809	1436.532	0.902	0.899	0.996	0.959	38.060	38.078
4.846	2105.973	1436.528	0.903	0.899	0.996	0.959	38.060	38.078
4.869	2110.138	1436.524	0.903	0.899	0.996	0.959	38.060	38.078
4.893	2114.302	1436.521	0.903	0.900	0.996	0.959	38.060	38.078
4.917	2118.467	1436.517	0.903	0.900	0.996	0.959	38.060	38.078
4.940	2122.632	1436.513	0.904	0.900	0.996	0.959	38.060	38.078
4.964	2126.796	1436.509	0.904	0.900	0.996	0.959	38.060	38.078
4.987	2130.961	1436.505	0.904	0.901	0.996	0.959	38.061	38.077
5.011	2135.125	1436.501	0.905	0.901	0.996	0.959	38.061	38.077
5.035	2139.290	1436.498	0.905	0.901	0.996	0.959	38.061	38.077
5.058	2143.455	1436.494	0.905	0.902	0.996	0.959	38.061	38.077
5.082	2147.619	1436.490	0.905	0.902	0.996	0.959	38.061	38.077
5.106	2151.784	1436.486	0.906	0.902	0.996	0.959	38.061	38.077
5.129	2155.948	1436.482	0.906	0.902	0.996	0.959	38.061	38.077
5.153	2160.113	1436.478	0.906	0.903	0.996	0.959	38.061	38.077
5.176	2164.278	1436.474	0.906	0.903	0.996	0.959	38.061	38.077
5.200	2168.442	1436.470	0.907	0.903	0.996	0.959	38.061	38.076

Draft Amidships m	KB m	BMt m	BML m	GMt m	GML m	KMt m	KML m	Immersion (TPc) tonne/cm	MTc tonne.m
0.500	0.256	60.496	745.446	56.353	741.302	60.753	745.702	12.380	54.421
0.524	0.268	58.120	716.251	53.989	712.120	58.389	716.520	12.438	54.918
0.547	0.281	55.959	689.630	51.840	685.511	56.240	689.911	12.497	55.418
0.571	0.293	53.985	665.254	49.878	661.147	54.278	665.547	12.555	55.921
0.594	0.305	52.163	642.607	48.068	638.512	52.468	642.912	12.612	56.406
0.618	0.318	50.346	620.970	46.264	616.887	50.664	621.287	12.657	56.823
0.642	0.330	48.484	600.545	44.414	596.475	48.814	600.875	12.686	57.199
0.665	0.342	46.741	581.418	42.683	577.360	47.083	581.760	12.713	57.555
0.689	0.355	45.124	563.667	41.078	559.622	45.478	564.022	12.741	57.913
0.713	0.367	43.619	547.140	39.585	543.107	43.985	547.507	12.768	58.272
0.736	0.379	42.217	531.734	38.196	527.713	42.596	532.113	12.795	58.634
0.760	0.391	40.904	517.304	36.896	513.295	41.296	517.695	12.822	58.995
0.783	0.404	39.653	503.394	35.656	499.398	40.056	503.798	12.846	59.311
0.807	0.416	38.477	490.338	34.493	486.354	38.893	490.754	12.869	59.629
0.831	0.428	37.371	478.049	33.399	474.077	37.799	478.477	12.893	59.948
0.854	0.440	36.329	466.478	32.369	462.519	36.769	466.919	12.917	60.269
0.878	0.453	35.347	455.570	31.399	451.623	35.799	456.023	12.940	60.592
0.902	0.465	34.417	445.240	30.482	441.304	34.882	445.704	12.964	60.914
0.925	0.477	33.537	435.451	29.614	431.528	34.014	435.928	12.987	61.236
0.949	0.489	32.703	426.181	28.793	422.270	33.193	426.670	13.011	61.562
0.972	0.501	31.903	417.201	28.005	413.303	32.405	417.703	13.033	61.861
0.996	0.514	31.153	408.765	27.267	404.879	31.667	409.279	13.056	62.177
1.020	0.526	30.426	400.580	26.552	396.706	30.952	401.106	13.076	62.469

Draft Amidships m	KB m	BMt m	BML m	GMt m	GML m	KMt m	KML m	Immersion (TPc) tonne/cm	MTc tonne.m
1.043	0.538	29.733	392.779	25.871	388.917	30.271	393.317	13.097	62.762
1.067	0.550	29.072	385.347	25.223	381.497	29.623	385.897	13.118	63.058
1.090	0.563	28.442	378.259	24.605	374.422	29.005	378.822	13.140	63.356
1.114	0.575	27.840	371.492	24.015	367.667	28.415	372.067	13.161	63.656
1.138	0.587	27.265	365.024	23.452	361.211	27.852	365.611	13.182	63.959
1.161	0.599	26.713	358.821	22.912	355.020	27.312	359.420	13.204	64.262
1.185	0.612	26.182	352.835	22.394	349.047	26.794	353.447	13.224	64.558
1.209	0.624	25.667	346.961	21.891	343.185	26.291	347.585	13.243	64.830
1.232	0.636	25.172	341.326	21.408	337.562	25.808	341.962	13.262	65.104
1.256	0.648	24.697	335.875	20.945	332.123	25.345	336.523	13.281	65.371
1.279	0.661	24.240	330.676	20.501	326.936	24.901	331.336	13.300	65.647
1.303	0.673	23.801	325.683	20.074	321.955	24.474	326.355	13.319	65.927
1.327	0.685	23.377	320.869	19.662	317.154	24.062	321.554	13.338	66.206
1.350	0.697	22.979	316.350	19.276	312.648	23.676	317.048	13.359	66.511
1.374	0.709	22.586	311.887	18.896	308.196	23.296	312.596	13.379	66.794
1.397	0.722	22.207	307.586	18.529	303.908	22.929	308.308	13.398	67.079
1.421	0.734	21.842	303.441	18.176	299.775	22.576	304.175	13.418	67.367
1.445	0.746	21.487	299.387	17.833	295.733	22.233	300.133	13.436	67.644
1.468	0.758	21.142	295.406	17.500	291.764	21.900	296.164	13.454	67.907
1.492	0.771	20.807	291.552	17.178	287.922	21.578	292.322	13.472	68.170
1.516	0.783	20.483	287.816	16.866	284.199	21.266	288.599	13.489	68.433
1.539	0.795	20.170	284.204	16.565	280.599	20.965	284.999	13.507	68.697
1.563	0.807	19.866	280.708	16.273	277.116	20.673	281.516	13.525	68.962
1.586	0.820	19.571	277.324	15.991	273.743	20.391	278.143	13.543	69.229
1.610	0.832	19.286	274.045	15.717	270.477	20.117	274.877	13.560	69.498
1.634	0.844	19.008	270.868	15.453	267.312	19.853	271.712	13.578	69.768
1.657	0.856	18.740	267.793	15.196	264.249	19.596	268.649	13.596	70.041
1.681	0.869	18.487	264.910	14.956	261.379	19.356	265.779	13.616	70.343
1.705	0.881	18.234	261.986	14.715	258.467	19.115	262.867	13.634	70.611
1.728	0.893	17.985	259.088	14.479	255.581	18.879	259.981	13.650	70.863
1.752	0.906	17.744	256.271	14.249	252.776	18.649	257.176	13.667	71.116
1.775	0.918	17.509	253.537	14.027	250.055	18.427	254.455	13.683	71.371
1.799	0.930	17.281	250.883	13.811	247.413	18.211	251.813	13.700	71.628
1.823	0.942	17.059	248.304	13.601	244.847	18.001	249.247	13.716	71.887
1.846	0.955	16.843	245.799	13.397	242.353	17.797	246.753	13.733	72.148
1.870	0.967	16.632	243.362	13.199	239.929	17.599	244.329	13.750	72.411
1.893	0.979	16.427	240.992	13.006	237.571	17.406	241.971	13.767	72.675
1.917	0.991	16.227	238.669	12.818	235.260	17.218	239.660	13.784	72.936
1.941	1.004	16.031	236.404	12.635	233.007	17.035	237.407	13.800	73.197
1.964	1.016	15.840	234.197	12.456	230.813	16.856	235.213	13.817	73.459
1.988	1.028	15.654	232.050	12.282	228.678	16.682	233.078	13.834	73.724
2.012	1.041	15.472	229.916	12.112	226.556	16.512	230.956	13.850	73.976
2.035	1.053	15.300	227.886	11.953	224.539	16.353	228.939	13.867	74.246
2.059	1.065	15.126	225.830	11.791	222.495	16.191	226.895	13.882	74.493
2.082	1.077	14.956	223.834	11.634	220.511	16.034	224.911	13.898	74.743
2.106	1.090	14.790	221.888	11.480	218.578	15.880	222.978	13.914	74.995
2.130	1.102	14.628	219.991	11.330	216.693	15.730	221.093	13.930	75.250
2.153	1.114	14.470	218.134	11.184	214.849	15.584	219.249	13.946	75.503
2.177	1.127	14.315	216.312	11.041	213.038	15.441	217.438	13.961	75.755
2.201	1.139	14.163	214.533	10.902	211.272	15.302	215.672	13.977	76.008
2.224	1.151	14.015	212.796	10.766	209.548	15.166	213.948	13.993	76.263
2.248	1.164	13.869	211.100	10.633	207.864	15.033	212.264	14.008	76.519
2.271	1.176	13.727	209.443	10.503	206.219	14.903	210.619	14.024	76.777
2.295	1.188	13.588	207.823	10.377	204.611	14.777	209.011	14.040	77.035
2.319	1.201	13.452	206.238	10.253	203.039	14.653	207.439	14.056	77.295
2.342	1.213	13.318	204.652	10.131	201.465	14.531	205.865	14.071	77.542
2.366	1.225	13.187	203.090	10.012	199.915	14.412	204.315	14.086	77.786
2.389	1.238	13.063	201.648	9.901	198.486	14.301	202.886	14.103	78.065

Draft Amidships m	KB m	BMt m	BML m	GMt m	GML m	KMt m	KML m	Immersion (TPc) tonne/cm	MTc tonne.m
2.413	1.250	12.938	200.174	9.788	197.023	14.188	201.423	14.118	78.319
2.437	1.262	12.815	198.717	9.677	195.579	14.077	199.979	14.133	78.570
2.460	1.275	12.694	197.291	9.568	194.166	13.968	198.566	14.149	78.822
2.484	1.287	12.575	195.895	9.462	192.782	13.862	197.182	14.164	79.075
2.508	1.299	12.459	194.529	9.358	191.428	13.758	195.828	14.179	79.329
2.531	1.312	12.345	193.190	9.257	190.101	13.657	194.501	14.194	79.585
2.555	1.324	12.233	191.873	9.157	188.796	13.557	193.196	14.210	79.839
2.578	1.336	12.123	190.586	9.060	187.522	13.460	191.922	14.225	80.096
2.602	1.349	12.016	189.326	8.964	186.275	13.364	190.675	14.240	80.355
2.626	1.361	11.910	188.090	8.871	185.051	13.271	189.451	14.256	80.614
2.649	1.373	11.806	186.878	8.779	183.851	13.179	188.251	14.271	80.875
2.673	1.386	11.704	185.689	8.689	182.675	13.089	187.075	14.286	81.136
2.696	1.398	11.603	184.496	8.601	181.494	13.001	185.894	14.301	81.387
2.720	1.410	11.510	183.390	8.520	180.400	12.920	184.800	14.318	81.667
2.744	1.423	11.413	182.225	8.435	179.247	12.835	183.647	14.332	81.912
2.767	1.435	11.317	181.084	8.352	178.119	12.752	182.519	14.346	82.159
2.791	1.448	11.224	179.966	8.271	177.014	12.671	181.414	14.361	82.408
2.815	1.460	11.132	178.871	8.192	175.931	12.592	180.331	14.376	82.659
2.838	1.472	11.042	177.801	8.114	174.873	12.514	179.273	14.390	82.913
2.862	1.485	10.953	176.767	8.037	173.852	12.437	178.252	14.406	83.177
2.885	1.497	10.866	175.758	7.963	172.855	12.363	177.255	14.421	83.444
2.909	1.509	10.780	174.696	7.889	171.805	12.289	176.205	14.435	83.678
2.933	1.522	10.695	173.703	7.817	170.825	12.217	175.225	14.449	83.937
2.956	1.534	10.612	172.729	7.746	169.863	12.146	174.263	14.464	84.197
2.980	1.547	10.530	171.771	7.677	168.918	12.077	173.318	14.479	84.458
3.004	1.559	10.450	170.828	7.609	167.987	12.009	172.387	14.494	84.720
3.027	1.571	10.374	169.961	7.546	167.132	11.946	171.532	14.511	85.012
3.051	1.584	10.293	168.868	7.477	166.052	11.877	170.452	14.521	85.182
3.074	1.596	10.210	167.586	7.406	164.782	11.806	169.182	14.524	85.245
3.098	1.609	10.128	166.328	7.337	163.536	11.737	167.936	14.528	85.310
3.122	1.621	10.047	165.092	7.268	162.313	11.668	166.713	14.532	85.376
3.145	1.633	9.968	163.875	7.201	161.109	11.601	165.509	14.536	85.441
3.169	1.646	9.890	162.680	7.136	159.925	11.536	164.325	14.540	85.508
3.192	1.658	9.813	161.506	7.071	158.764	11.471	163.164	14.544	85.576
3.216	1.670	9.737	160.352	7.008	157.623	11.408	162.023	14.548	85.645
3.240	1.683	9.663	159.219	6.946	156.501	11.346	160.901	14.552	85.716
3.263	1.695	9.590	158.105	6.885	155.400	11.285	159.800	14.556	85.788
3.287	1.707	9.517	157.012	6.825	154.320	11.225	158.720	14.560	85.862
3.311	1.720	9.446	155.939	6.766	153.258	11.166	157.658	14.565	85.938
3.334	1.732	9.376	154.879	6.708	152.211	11.108	156.611	14.569	86.013
3.358	1.744	9.306	153.820	6.650	151.165	11.050	155.565	14.573	86.079
3.381	1.757	9.237	152.782	6.594	150.138	10.994	154.538	14.577	86.148
3.405	1.769	9.169	151.763	6.538	149.132	10.938	153.532	14.581	86.219
3.429	1.781	9.102	150.765	6.483	148.147	10.883	152.547	14.585	86.294
3.452	1.794	9.036	149.787	6.430	147.181	10.830	151.581	14.589	86.373
3.476	1.806	8.971	148.786	6.377	146.192	10.777	150.592	14.592	86.429
3.499	1.818	8.907	147.794	6.325	145.213	10.725	149.613	14.595	86.483
3.523	1.831	8.843	146.819	6.274	144.250	10.674	148.650	14.599	86.538
3.547	1.843	8.781	145.860	6.224	143.303	10.624	147.703	14.602	86.594
3.570	1.855	8.720	144.916	6.175	142.371	10.575	146.771	14.605	86.652
3.594	1.867	8.659	143.990	6.127	141.458	10.527	145.858	14.609	86.713
3.618	1.880	8.600	143.081	6.079	140.560	10.479	144.960	14.612	86.776
3.641	1.892	8.541	142.186	6.033	139.678	10.433	144.078	14.616	86.841
3.665	1.904	8.483	141.306	5.987	138.811	10.387	143.211	14.619	86.907
3.688	1.917	8.425	140.441	5.942	137.958	10.342	142.358	14.623	86.975
3.712	1.929	8.369	139.171	5.898	136.699	10.298	141.099	14.614	86.779
3.736	1.941	8.313	138.313	5.854	135.854	10.254	140.254	14.617	86.835
3.759	1.953	8.258	137.470	5.811	135.024	10.211	139.424	14.620	86.893

Draft Amidships m	KB m	BMt m	BML m	GMt m	GML m	KMt m	KML m	Immersion (TPc) tonne/cm	MTc tonne.m
3.783	1.966	8.204	136.642	5.769	134.208	10.169	138.608	14.624	86.954
3.807	1.978	8.150	135.829	5.728	133.407	10.128	137.807	14.627	87.017
3.830	1.990	8.097	135.026	5.687	132.616	10.087	137.016	14.631	87.081
3.854	2.002	8.045	134.231	5.648	131.833	10.048	136.233	14.634	87.142
3.877	2.015	7.994	133.449	5.608	131.063	10.008	135.463	14.638	87.206
3.901	2.027	7.943	132.680	5.570	130.307	9.970	134.707	14.641	87.272
3.925	2.039	7.893	131.925	5.532	129.564	9.932	133.964	14.645	87.341
3.948	2.051	7.843	131.184	5.495	128.835	9.895	133.235	14.649	87.413
3.972	2.063	7.794	130.455	5.458	128.119	9.858	132.519	14.653	87.487
3.995	2.076	7.746	129.725	5.422	127.401	9.822	131.801	14.656	87.554
4.019	2.088	7.699	128.985	5.386	126.673	9.786	131.073	14.659	87.608
4.043	2.100	7.651	128.254	5.352	125.955	9.752	130.355	14.662	87.663
4.066	2.112	7.605	127.536	5.317	125.248	9.717	129.648	14.666	87.719
4.090	2.125	7.559	126.828	5.284	124.553	9.684	128.953	14.669	87.777
4.114	2.137	7.514	126.130	5.250	123.867	9.650	128.267	14.672	87.836
4.137	2.149	7.469	125.425	5.218	123.174	9.618	127.574	14.675	87.885
4.161	2.161	7.425	124.729	5.186	122.490	9.586	126.890	14.677	87.933
4.184	2.173	7.381	124.041	5.154	121.814	9.554	126.214	14.680	87.982
4.208	2.186	7.338	123.361	5.123	121.147	9.523	125.547	14.683	88.030
4.232	2.198	7.295	122.689	5.093	120.487	9.493	124.887	14.685	88.079
4.255	2.210	7.253	122.025	5.063	119.835	9.463	124.235	14.688	88.128
4.279	2.222	7.211	121.369	5.033	119.191	9.433	123.591	14.691	88.177
4.303	2.234	7.170	120.720	5.004	118.555	9.404	122.955	14.694	88.227
4.326	2.247	7.129	119.928	4.976	117.775	9.376	122.175	14.691	88.163
4.350	2.259	7.089	119.354	4.947	117.212	9.347	121.612	14.696	88.256
4.373	2.271	7.049	118.769	4.920	116.639	9.320	121.039	14.700	88.336
4.397	2.283	7.010	118.194	4.893	116.077	9.293	120.477	14.704	88.419
4.421	2.295	6.971	117.582	4.866	115.477	9.266	119.877	14.707	88.469
4.444	2.307	6.932	116.986	4.840	114.894	9.240	119.294	14.710	88.527
4.468	2.320	6.894	116.404	4.814	114.323	9.214	118.723	14.713	88.589
4.491	2.332	6.857	115.797	4.788	113.729	9.188	118.129	14.715	88.628
4.515	2.344	6.819	115.231	4.763	113.175	9.163	117.575	14.719	88.694
4.539	2.356	6.783	114.655	4.739	112.611	9.139	117.011	14.722	88.747
4.562	2.368	6.746	114.084	4.715	112.053	9.115	116.453	14.724	88.799
4.586	2.380	6.709	113.464	4.690	111.445	9.090	115.845	14.725	88.807
4.610	2.393	6.672	112.841	4.665	110.833	9.065	115.233	14.725	88.807
4.633	2.405	6.636	112.224	4.641	110.229	9.041	114.629	14.725	88.807
4.657	2.417	6.600	111.614	4.617	109.631	9.017	114.031	14.725	88.808
4.680	2.429	6.564	111.011	4.594	109.040	8.994	113.440	14.725	88.808
4.704	2.441	6.529	110.414	4.570	108.455	8.970	112.855	14.725	88.808
4.728	2.453	6.494	109.824	4.548	107.877	8.948	112.277	14.725	88.809
4.751	2.465	6.460	109.239	4.525	107.305	8.925	111.705	14.725	88.810
4.775	2.478	6.426	108.661	4.503	106.739	8.903	111.139	14.725	88.810
4.798	2.490	6.392	108.089	4.482	106.179	8.882	110.579	14.724	88.811
4.822	2.502	6.359	107.523	4.460	105.625	8.860	110.025	14.724	88.812
4.846	2.514	6.326	106.963	4.440	105.077	8.840	109.477	14.724	88.813
4.869	2.526	6.293	106.409	4.419	104.535	8.819	108.935	14.724	88.815
4.893	2.538	6.260	105.860	4.399	103.999	8.799	108.399	14.724	88.816
4.917	2.550	6.228	105.317	4.379	103.468	8.779	107.868	14.724	88.817
4.940	2.562	6.197	104.780	4.359	102.942	8.759	107.342	14.724	88.819
4.964	2.575	6.165	104.248	4.340	102.423	8.740	106.823	14.724	88.820
4.987	2.587	6.134	103.721	4.321	101.908	8.721	106.308	14.724	88.822
5.011	2.599	6.103	103.200	4.302	101.399	8.702	105.799	14.724	88.824
5.035	2.611	6.073	102.684	4.284	100.895	8.684	105.295	14.724	88.826
5.058	2.623	6.043	102.173	4.266	100.396	8.666	104.796	14.724	88.828
5.082	2.635	6.013	101.667	4.248	99.902	8.648	104.302	14.724	88.830
5.106	2.647	5.983	101.166	4.230	99.413	8.630	103.813	14.724	88.832
5.129	2.659	5.954	100.670	4.213	98.929	8.613	103.329	14.724	88.834

Draft Amidships m	KB m	BMt m	BML m	GMt m	GML m	KMt m	KML m	Immersion (TPc) tonne/cm	MTc tonne.m
5.153	2.671	5.925	100.178	4.196	98.450	8.596	102.850	14.724	88.837
5.176	2.683	5.896	99.692	4.180	97.975	8.580	102.375	14.724	88.839
5.200	2.696	5.868	99.210	4.163	97.505	8.563	101.905	14.724	88.842
4.500	2.336	6.843	115.591	4.899	113.648	9.179	117.928	14.717	88.746

Lampiran 8 Analisis Stabilitas Kondisi Kapal Kosong (*lightship*)

Stability Calculation - H-OIL BARGE 260 FEET ADD TRUNK

Loadcase - LIGHTSHIP

Damage Case - Intact

Free to Trim

Specific gravity = 1.025; (Density = 1.025 tonne/m³)

Fluid analysis method: Use corrected VCG

Item Name	Quantity	Unit Mass tonne	Total Mass tonne	Unit Volume m ³	Total Volume m ³	Long. Arm m	Trans. Arm m	Vert. Arm m	Total FSM tonne.m	FSM Type
Lightship	1	1196.000	1196.000			35.655	0.000	2.690	0.000	User Specified
FWT P	0%	106.897	0.000	106.897	0.000	7.482	-7.391	0.004	0.000	Maximum
FWT S	0%	106.897	0.000	106.897	0.000	7.482	7.391	0.004	0.000	Maximum
SLOP P	0%	71.558	0.000	78.377	0.000	8.687	-4.347	1.260	0.000	Maximum
SLOP S	0%	71.558	0.000	78.377	0.000	8.687	4.347	1.260	0.000	Maximum
COT 6 P	0%	368.763	0.000	415.133	0.000	14.172	-4.347	1.260	0.000	Maximum
COT 6 S	0%	368.763	0.000	415.133	0.000	14.172	4.347	1.260	0.000	Maximum
COT 5 P	0%	457.794	0.000	515.359	0.000	24.078	-4.347	1.260	0.000	Maximum
COT 5 S	0%	457.794	0.000	515.359	0.000	24.078	4.347	1.260	0.000	Maximum
COT 4 P	0%	457.793	0.000	515.359	0.000	35.051	-4.347	1.260	0.000	Maximum
COT 4 S	0%	457.793	0.000	515.359	0.000	35.051	4.347	1.260	0.000	Maximum
COT 3 P	0%	457.794	0.000	515.359	0.000	46.024	-4.347	1.260	0.000	Maximum
COT 3 S	0%	457.794	0.000	515.359	0.000	46.024	4.347	1.260	0.000	Maximum
COT 2 P	0%	457.752	0.000	515.312	0.000	56.997	-4.347	1.260	0.000	Maximum
COT 2 S	0%	457.752	0.000	515.312	0.000	56.997	4.347	1.260	0.000	Maximum
COT 1 P	0%	344.720	0.000	388.067	0.000	66.873	-3.925	1.260	0.000	Maximum
COT 1 S	0%	344.720	0.000	388.067	0.000	66.873	3.925	1.260	0.000	Maximum
FPT P	0%	101.204	0.000	98.735	0.000	73.324	0.000	0.431	0.000	Maximum
FPT S	0%	101.204	0.000	98.735	0.000	73.324	0.000	0.431	0.000	Maximum
Total Loadcase			1196.000	6297.199	0.000	35.655	0.000	2.690	0.000	
FS correction								0.000		
VCG fluid								2.690		

Heel to Starboard deg	0.0	10.0	20.0	30.0	40.0	50.0	60.0
GZ m	0.000	4.249	5.272	5.357	5.063	4.463	3.588
Area under GZ curve from zero heel m.deg	0.0000	23.2339	72.8610	126.2399	178.6483	226.5101	266.9650
Displacement t	1196	1196	1196	1196	1196	1196	1196
Draft at FP m	0.735	0.548	-0.183	-1.292	-2.855	-5.146	-8.703
Draft at AP m	1.212	1.126	0.459	-0.638	-2.201	-4.367	-7.661
WL Length m	69.904	72.831	74.328	74.466	74.432	74.362	74.273
Beam max extents on WL m	18.898	15.736	11.203	9.499	8.535	7.161	6.335
Wetted Area m ²	1348.911	1115.163	907.870	833.903	808.463	809.193	811.477
Waterpl. Area m ²	1270.715	987.995	732.500	632.078	588.158	505.749	449.075
Prismatic coeff. (Cp)	0.772	0.763	0.785	0.810	0.830	0.846	0.856
Block coeff. (Cb)	0.760	0.394	0.413	0.433	0.466	0.549	0.621
LCB from zero pt. (+ve fwd) m	35.640	35.636	35.629	35.624	35.623	35.621	35.609
LCF from zero pt. (+ve fwd) m	38.019	36.906	36.738	36.550	36.695	37.259	37.389
Max deck inclination deg	0.3451	10.0084	20.0046	30.0025	40.0014	50.0010	60.0007
Trim angle (+ve by stern) deg	0.3451	0.4188	0.4649	0.4733	0.4732	0.5639	0.7546

Heel to Starboard deg	70.0	80.0	90.0
GZ m	2.548	1.486	0.378

Heel to Starboard deg	70.0	80.0	90.0
Area under GZ curve from zero heel m.deg	297.7079	317.8963	327.2488
Displacement t	1196	1196	1196
Draft at FP m	-15.401	-35.160	n/a
Draft at AP m	-13.905	-32.316	n/a
WL Length m	74.177	74.412	74.696
Beam max extents on WL m	6.983	6.951	6.845
Wetted Area m ²	831.998	865.540	868.194
Waterpl. Area m ²	448.096	475.819	470.486
Prismatic coeff. (Cp)	0.863	0.857	0.851
Block coeff. (Cb)	0.583	0.638	0.723
LCB from zero pt. (+ve fwd) m	35.603	35.607	35.603
LCF from zero pt. (+ve fwd) m	36.869	37.726	37.836
Max deck inclination deg	70.0004	80.0002	90.0000
Trim angle (+ve by stern) deg	1.0830	2.0589	-1.#IND

Lampiran 9 Analisis Stabilitas Kondisi Kapal Muatan Penuh (*full load*)

Loadcase - FULL LOAD

Damage Case - Intact

Free to Trim

Specific gravity = 1.025; (Density = 1.025 tonne/m³)

Fluid analysis method: Use corrected VCG

Item Name	Quantity	Unit Mass tonne	Total Mass tonne	Unit Volume m ³	Total Volume m ³	Long. Arm m	Trans. Arm m	Vert. Arm m	Total FSM tonne.m	FSM Type
Lightship	1	1196.000	1196.000			35.655	0.000	2.690	0.000	User Specified
FWT P	0%	106.897	0.000	106.897	0.000	7.482	-7.391	0.004	0.000	Maximum
FWT S	0%	106.897	0.000	106.897	0.000	7.482	7.391	0.004	0.000	Maximum
SLOP P	0%	71.558	0.000	78.377	0.000	8.687	-4.347	1.260	0.000	Maximum
SLOP S	0%	71.558	0.000	78.377	0.000	8.687	4.347	1.260	0.000	Maximum
COT 6 P	100%	368.763	368.763	415.133	415.133	14.172	-4.220	3.981	0.000	Maximum
COT 6 S	100%	368.763	368.763	415.133	415.133	14.172	4.220	3.981	0.000	Maximum
COT 5 P	100%	457.794	457.794	515.359	515.359	24.078	-4.220	3.981	0.000	Maximum
COT 5 S	100%	457.794	457.794	515.359	515.359	24.078	4.220	3.981	0.000	Maximum
COT 4 P	100%	457.793	457.793	515.359	515.359	35.051	-4.220	3.981	0.000	Maximum
COT 4 S	100%	457.793	457.793	515.359	515.359	35.051	4.220	3.981	0.000	Maximum
COT 3 P	100%	457.794	457.794	515.359	515.359	46.024	-4.220	3.981	0.000	Maximum
COT 3 S	100%	457.794	457.794	515.359	515.359	46.024	4.220	3.981	0.000	Maximum
COT 2 P	100%	457.752	457.752	515.312	515.312	56.997	-4.220	3.981	0.000	Maximum
COT 2 S	100%	457.752	457.752	515.312	515.312	56.997	4.220	3.981	0.000	Maximum
COT 1 P	100%	344.720	344.720	388.067	388.067	66.864	-3.836	3.995	0.000	Maximum
COT 1 S	100%	344.720	344.720	388.067	388.067	66.864	3.836	3.995	0.000	Maximum
FPT P	0%	101.204	0.000	98.735	0.000	73.324	0.000	0.431	0.000	Maximum
FPT S	0%	101.204	0.000	98.735	0.000	73.324	0.000	0.431	0.000	Maximum
Total Loadcase			6285.230	6297.199	5729.179	39.403	0.000	3.737	0.000	
FS correction								0.000		
VCG fluid								3.737		

Heel to Starboard deg	0.0	10.0	20.0	30.0	40.0	50.0	60.0
GZ m	0.000	0.818	1.337	1.496	1.407	1.157	0.821
Area under GZ curve from zero heel m.deg	0.0000	4.2310	15.3131	29.7419	44.4230	57.3447	67.2880
Displacement t	6285	6285	6285	6285	6285	6285	6285
Draft at FP m	5.063	5.195	5.491	6.211	7.347	8.937	11.367
Draft at AP m	4.118	4.126	4.362	4.890	5.632	6.612	8.121
WL Length m	79.254	79.255	79.255	79.132	78.581	78.178	77.868
Beam max extents on WL m	18.898	17.232	16.882	13.690	10.649	8.936	7.904
Wetted Area m ²	2052.587	2203.428	2335.795	2454.030	2481.758	2485.746	2488.511
Waterpl. Area m ²	1436.595	1280.824	1118.593	926.004	749.525	629.972	557.466
Prismatic coeff. (Cp)	0.843	0.842	0.842	0.847	0.856	0.862	0.868
Block coeff. (Cb)	0.829	0.697	0.575	0.591	0.663	0.714	0.753
LCB from zero pt. (+ve fwd) m	39.418	39.421	39.423	39.428	39.437	39.447	39.447
LCF from zero pt. (+ve fwd) m	38.077	37.520	37.659	38.162	38.727	38.772	38.769
Max deck inclination deg	0.6845	10.0287	20.0142	30.0104	40.0094	50.0086	60.0070
Trim angle (+ve by stern) deg	-0.6845	-0.7737	-0.8180	-0.9559	-1.2414	-1.6832	-2.3486

Heel to Starboard deg	70.0	80.0	90.0
GZ m	0.436	0.026	-0.390

Heel to Starboard deg	70.0	80.0	90.0
Area under GZ curve from zero heel m.deg	73.6042	75.9261	74.1086
Displacement t	6285	6285	6285
Draft at FP m	15.972	29.238	n/a
Draft at AP m	10.920	18.997	n/a
WL Length m	77.600	77.336	77.085
Beam max extents on WL m	7.284	6.951	6.845
Wetted Area m ²	2490.445	2491.780	2492.957
Waterpl. Area m ²	514.036	490.669	483.360
Prismatic coeff. (Cp)	0.871	0.875	0.878
Block coeff. (Cb)	0.787	0.819	0.849
LCB from zero pt. (+ve fwd) m	39.457	39.463	39.469
LCF from zero pt. (+ve fwd) m	38.770	38.763	38.755
Max deck inclination deg	70.0050	80.0026	90.0000
Trim angle (+ve by stern) deg	-3.6533	-7.3753	-90.0000