

## DAFTAR PUSTAKA

- Baried, Siti Baroroh, Sulastin Sutrisno, Siti Chamamah Soeratno, Sawu, Kun Zachrun Istanti. 1994. *Pengantar Teori Filologi*. Yogyakarta : ( BPPF ) Fakultas Sastra Universitas Gadjah Mada.
- Djamaris, Edawar. 2002. *Metode Penelitian Filologi*. Jakarta: CV Manasco
- Fadillah, Alif. 2022. Fungsi Lontara *Kutika* dalam Kegiatan Pertanian Pada Masyarakat Balang Taroang Bulukumba. Makassar: Universitas Hasanuddin.
- Foster, George. M. 1986. *Antropologi Kesehatan*. Jakarta: Universitas Hasanuddin.
- Gani, Ambo, dkk. 1990. *Sinrilikna I Manakkuk* ( Lontara Makassar ). Ujung Pandang: Proyek Penelitian dan Pengkajian Kebudayaan Nusantara.
- Hadrawi, Muhlis. 2015. *Kedatangan dan Integrasi Orang Melayu Di Sulawesi Selatan Pada Peringatan Awal: Kajian Berdasarkan Manuskrip Bugis-Makassar*. Makassar.
- \_\_\_\_\_ et al. 2020. *Lontara Sakke' Attoriolong Bone*: Transliterasi dan Terjemahan. Makassar. Innawa.
- Ikram, Achadiati, dkk.1991. *Naskah dan Kita*. Depok: Fakultas Sastra Universitas Indonesia.
- Karlina, Lilis. 2019. Teks, Fungsi, dan Persepsi Masyarakat Libureng Terhadap Lontara *Kotika*. Makassar: Universitas Hasanuddin.
- Kusumah, Dloyana. 2017. "Pengobatan Tradisional Orang Bugis-Makassar," Patanjala: Journal of Historical and Cultural Research 9, no. 2: 245–60..
- Lubis, Nabila. 2001."Naskah, Teks, dan Metode Penelitian Filologi". Jakarta: Penerbit Yayasan Media Alo Indonesia.

- Paeni, Mukhlis. 2003. *Katalog Induk Naskah-Naskah Nusantara Sulawesi Selatan*. Kraton Yogyakarta.
- Purwanto, Budhi. 2016. *Obat Herbal*. Yogyakarta: Flash Book.
- Pusat Pembinaan dan Pengembangan Bahasa. 1997. *Kamus Istilah Filologi*. Jakarta: Departemen Pendidikan dan Kebudayaan.
- Qaffah, Rosa Maulidia. 2018. *Karakteristik Sosial Budaya Kesehatan Masyarakat Suku Bugis Bone*. Makassar: Universitas Islam Negeri Alauddin Makassar.
- Rahmatia dan Abdullah Maulani, 2021. *Pemikiran Sains-Sufistik Orang Bugis Dalam Naskah Kutika Ugi Sakke Rupa*. Indonesia: Univeristas Indonesia, Universitas Islam Negeri Syarif Hidayatullah Jakarta.
- Rizwanah. 2017. *Hikayat Siti Lathifah (Suntingan Teks, Terjemahan, Dan Telaah Ide Sentral)*. Aceh: Fakultas Adab dan Humaniora, Univeristas Islam Negeri Ar-Raniry Darussalam Banda Aceh.
- Robson, S.O. 1978. *Prinsip-Prinsip Filologi Indonesia*. Jakarta: RUL ( Kerjasama Pusat Pembinaan dan Pengembangan Bahasa dan Universitas Leiden).
- Sorakhmad, Winarno. 1985. *Pengantar Penelitian Ilmiah*. Bandung: Tarsito.
- Sudardi, Bani. 2001. *”Dasar-Dasar Teori Filologi”*. Surakarta: penerbit Sastra Indonesia, Fakultas Sastra, Universitas Sebelas Maret.
- Sugiyono. 2009. *Metode Penelitian Kuantitatif Kualitatif dan R&D*. Bandung: Alfabeta.
- Sulastin, Sutrisno. 1981. *Relevansi Studi Filologi*. Yogyakarta.

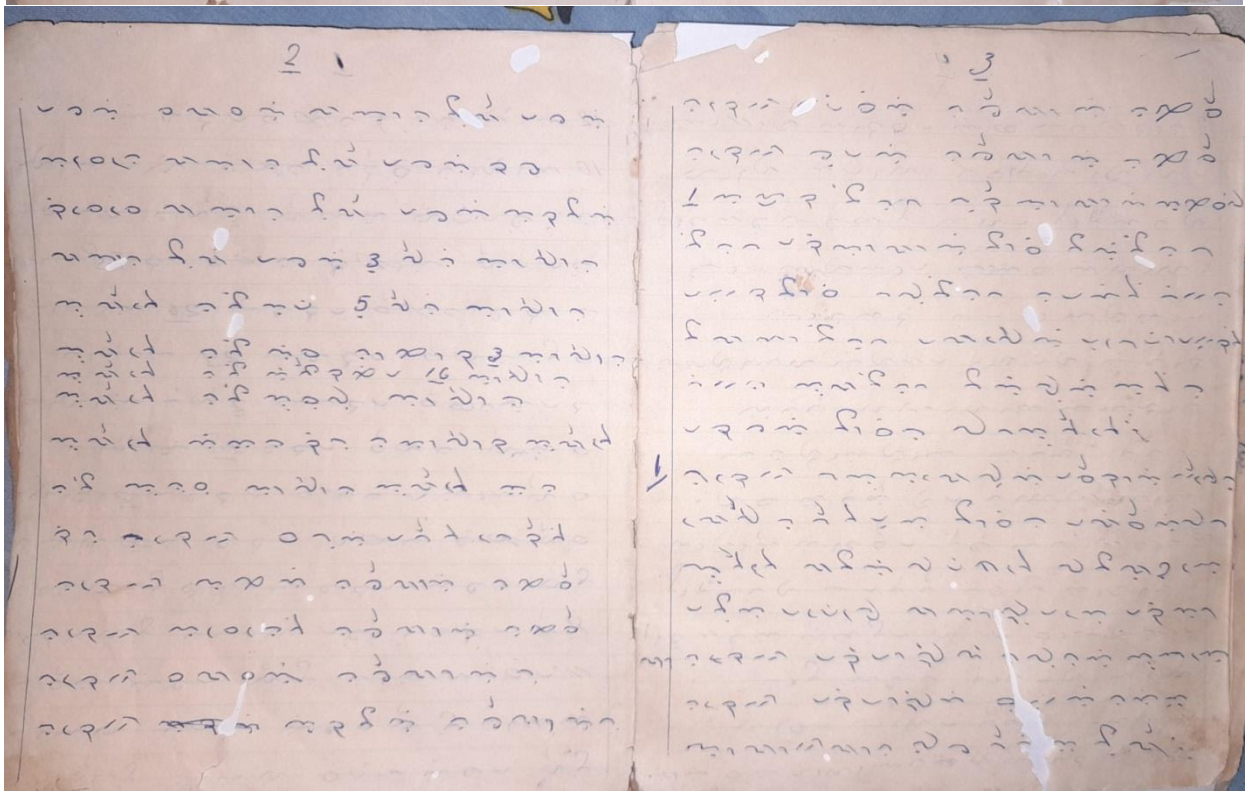
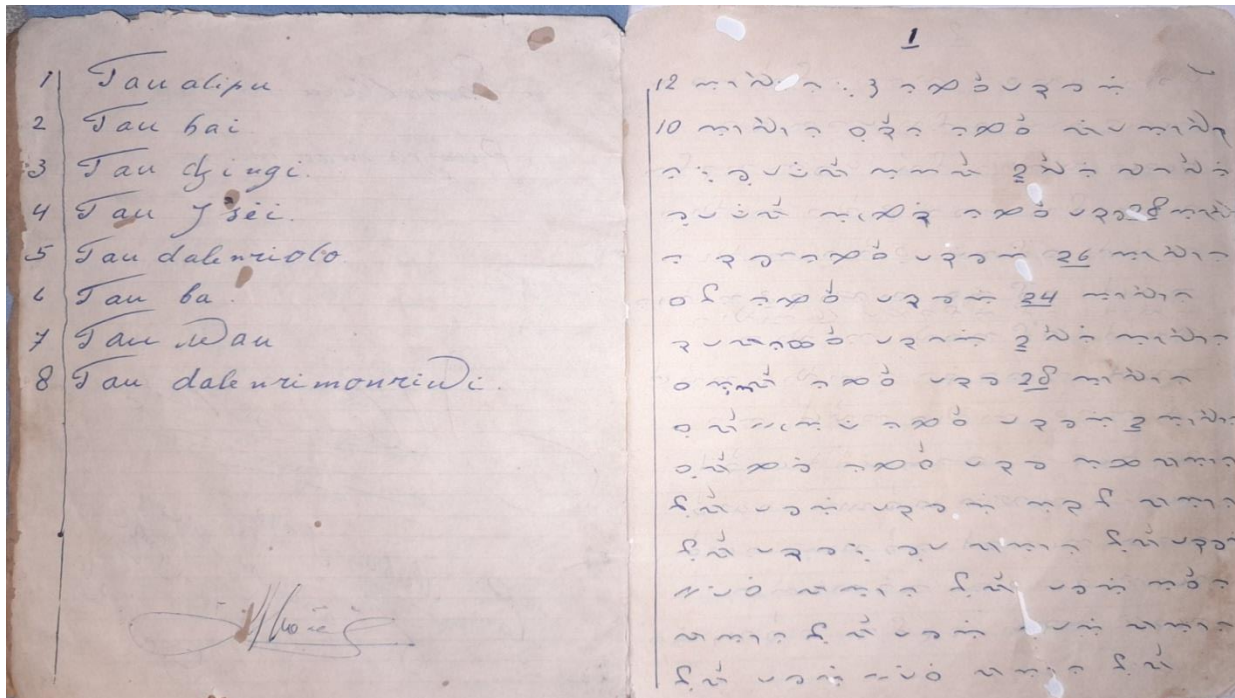
Syam, Nur. 2019. "*Edisi Teks dan Profil Syekh Yusuf dalam Lontara Riwayaqna Tuwanta Salamaka*". Makassar: Sastra Daerah, Fakultas Ilmu Budaya, Universitas Hasanuddin.

**Lontara sumber:**

Lontara *Sakke'rupa*. Koleksi Pribadi

# LAMPIRAN

LAMPIRAN 1  
FOTO NASKAH



4

3  
 2  
 1  
 2  
 3  
 4  
 5  
 6  
 7  
 8  
 9  
 10  
 11  
 12  
 13  
 14  
 15  
 16  
 17  
 18  
 19  
 20  
 21  
 22  
 23  
 24  
 25  
 26  
 27  
 28  
 29  
 30  
 31  
 32  
 33  
 34  
 35  
 36  
 37  
 38  
 39  
 40  
 41  
 42  
 43  
 44  
 45  
 46  
 47  
 48  
 49  
 50  
 51  
 52  
 53  
 54  
 55  
 56  
 57  
 58  
 59  
 60  
 61  
 62  
 63  
 64  
 65  
 66  
 67  
 68  
 69  
 70  
 71  
 72  
 73  
 74  
 75  
 76  
 77  
 78  
 79  
 80  
 81  
 82  
 83  
 84  
 85  
 86  
 87  
 88  
 89  
 90  
 91  
 92  
 93  
 94  
 95  
 96  
 97  
 98  
 99  
 100

5

1  
 2  
 3  
 4  
 5  
 6  
 7  
 8  
 9  
 10  
 11  
 12  
 13  
 14  
 15  
 16  
 17  
 18  
 19  
 20  
 21  
 22  
 23  
 24  
 25  
 26  
 27  
 28  
 29  
 30  
 31  
 32  
 33  
 34  
 35  
 36  
 37  
 38  
 39  
 40  
 41  
 42  
 43  
 44  
 45  
 46  
 47  
 48  
 49  
 50  
 51  
 52  
 53  
 54  
 55  
 56  
 57  
 58  
 59  
 60  
 61  
 62  
 63  
 64  
 65  
 66  
 67  
 68  
 69  
 70  
 71  
 72  
 73  
 74  
 75  
 76  
 77  
 78  
 79  
 80  
 81  
 82  
 83  
 84  
 85  
 86  
 87  
 88  
 89  
 90  
 91  
 92  
 93  
 94  
 95  
 96  
 97  
 98  
 99  
 100

6

1  
 2  
 3  
 4  
 5  
 6  
 7  
 8  
 9  
 10  
 11  
 12  
 13  
 14  
 15  
 16  
 17  
 18  
 19  
 20  
 21  
 22  
 23  
 24  
 25  
 26  
 27  
 28  
 29  
 30  
 31  
 32  
 33  
 34  
 35  
 36  
 37  
 38  
 39  
 40  
 41  
 42  
 43  
 44  
 45  
 46  
 47  
 48  
 49  
 50  
 51  
 52  
 53  
 54  
 55  
 56  
 57  
 58  
 59  
 60  
 61  
 62  
 63  
 64  
 65  
 66  
 67  
 68  
 69  
 70  
 71  
 72  
 73  
 74  
 75  
 76  
 77  
 78  
 79  
 80  
 81  
 82  
 83  
 84  
 85  
 86  
 87  
 88  
 89  
 90  
 91  
 92  
 93  
 94  
 95  
 96  
 97  
 98  
 99  
 100

7

1  
 2  
 3  
 4  
 5  
 6  
 7  
 8  
 9  
 10  
 11  
 12  
 13  
 14  
 15  
 16  
 17  
 18  
 19  
 20  
 21  
 22  
 23  
 24  
 25  
 26  
 27  
 28  
 29  
 30  
 31  
 32  
 33  
 34  
 35  
 36  
 37  
 38  
 39  
 40  
 41  
 42  
 43  
 44  
 45  
 46  
 47  
 48  
 49  
 50  
 51  
 52  
 53  
 54  
 55  
 56  
 57  
 58  
 59  
 60  
 61  
 62  
 63  
 64  
 65  
 66  
 67  
 68  
 69  
 70  
 71  
 72  
 73  
 74  
 75  
 76  
 77  
 78  
 79  
 80  
 81  
 82  
 83  
 84  
 85  
 86  
 87  
 88  
 89  
 90  
 91  
 92  
 93  
 94  
 95  
 96  
 97  
 98  
 99  
 100

8

10  
 20  
 30  
 40  
 50  
 60  
 70  
 80  
 90  
 100  
 110  
 120  
 130  
 140  
 150  
 160  
 170  
 180  
 190  
 200

9

1  
 2  
 3  
 4  
 5  
 6  
 7  
 8  
 9  
 10  
 11  
 12  
 13  
 14  
 15  
 16  
 17  
 18  
 19  
 20

10

1  
 2  
 3  
 4  
 5  
 6  
 7  
 8  
 9  
 10  
 11  
 12  
 13  
 14  
 15  
 16  
 17  
 18  
 19  
 20

11

1  
 2  
 3  
 4  
 5  
 6  
 7  
 8  
 9  
 10  
 11  
 12  
 13  
 14  
 15  
 16  
 17  
 18  
 19  
 20

12

10  
 11  
 12  
 13  
 14  
 15  
 16  
 17  
 18  
 19  
 20  
 21  
 22  
 23  
 24  
 25  
 26  
 27  
 28  
 29  
 30  
 31  
 32  
 33  
 34  
 35  
 36  
 37  
 38  
 39  
 40  
 41  
 42  
 43  
 44  
 45  
 46  
 47  
 48  
 49  
 50  
 51  
 52  
 53  
 54  
 55  
 56  
 57  
 58  
 59  
 60  
 61  
 62  
 63  
 64  
 65  
 66  
 67  
 68  
 69  
 70  
 71  
 72  
 73  
 74  
 75  
 76  
 77  
 78  
 79  
 80  
 81  
 82  
 83  
 84  
 85  
 86  
 87  
 88  
 89  
 90  
 91  
 92  
 93  
 94  
 95  
 96  
 97  
 98  
 99  
 100

13

10  
 11  
 12  
 13  
 14  
 15  
 16  
 17  
 18  
 19  
 20  
 21  
 22  
 23  
 24  
 25  
 26  
 27  
 28  
 29  
 30  
 31  
 32  
 33  
 34  
 35  
 36  
 37  
 38  
 39  
 40  
 41  
 42  
 43  
 44  
 45  
 46  
 47  
 48  
 49  
 50  
 51  
 52  
 53  
 54  
 55  
 56  
 57  
 58  
 59  
 60  
 61  
 62  
 63  
 64  
 65  
 66  
 67  
 68  
 69  
 70  
 71  
 72  
 73  
 74  
 75  
 76  
 77  
 78  
 79  
 80  
 81  
 82  
 83  
 84  
 85  
 86  
 87  
 88  
 89  
 90  
 91  
 92  
 93  
 94  
 95  
 96  
 97  
 98  
 99  
 100

14

10  
 11  
 12  
 13  
 14  
 15  
 16  
 17  
 18  
 19  
 20  
 21  
 22  
 23  
 24  
 25  
 26  
 27  
 28  
 29  
 30  
 31  
 32  
 33  
 34  
 35  
 36  
 37  
 38  
 39  
 40  
 41  
 42  
 43  
 44  
 45  
 46  
 47  
 48  
 49  
 50  
 51  
 52  
 53  
 54  
 55  
 56  
 57  
 58  
 59  
 60  
 61  
 62  
 63  
 64  
 65  
 66  
 67  
 68  
 69  
 70  
 71  
 72  
 73  
 74  
 75  
 76  
 77  
 78  
 79  
 80  
 81  
 82  
 83  
 84  
 85  
 86  
 87  
 88  
 89  
 90  
 91  
 92  
 93  
 94  
 95  
 96  
 97  
 98  
 99  
 100

15

10  
 11  
 12  
 13  
 14  
 15  
 16  
 17  
 18  
 19  
 20  
 21  
 22  
 23  
 24  
 25  
 26  
 27  
 28  
 29  
 30  
 31  
 32  
 33  
 34  
 35  
 36  
 37  
 38  
 39  
 40  
 41  
 42  
 43  
 44  
 45  
 46  
 47  
 48  
 49  
 50  
 51  
 52  
 53  
 54  
 55  
 56  
 57  
 58  
 59  
 60  
 61  
 62  
 63  
 64  
 65  
 66  
 67  
 68  
 69  
 70  
 71  
 72  
 73  
 74  
 75  
 76  
 77  
 78  
 79  
 80  
 81  
 82  
 83  
 84  
 85  
 86  
 87  
 88  
 89  
 90  
 91  
 92  
 93  
 94  
 95  
 96  
 97  
 98  
 99  
 100







24 34

Handwritten text in Arabic script, including the circled number 9990.

35 25

Handwritten text in Arabic script, including the circled number 9999.

26 36

Handwritten text in Arabic script, including the circled number 9909.

قائمة من سلقاتنا التي كتبت في اسواقنا

9909	9909	9909	9909
9909	9909	9909	9909
9909	9909	9909	9909
9909	9909	9909	9909

A 4x4 grid diagram with a diamond shape in the center, containing the number 9909 in various orientations.

37 27

Handwritten text in Arabic script, including the circled number 9090.

28 38

Handwritten text in Arabic script, including a circled number 9990.

39 39

Bl	Il	B	L
h	5	hl	Il
Il	Λ	q	Wl
I	Il	Il	V

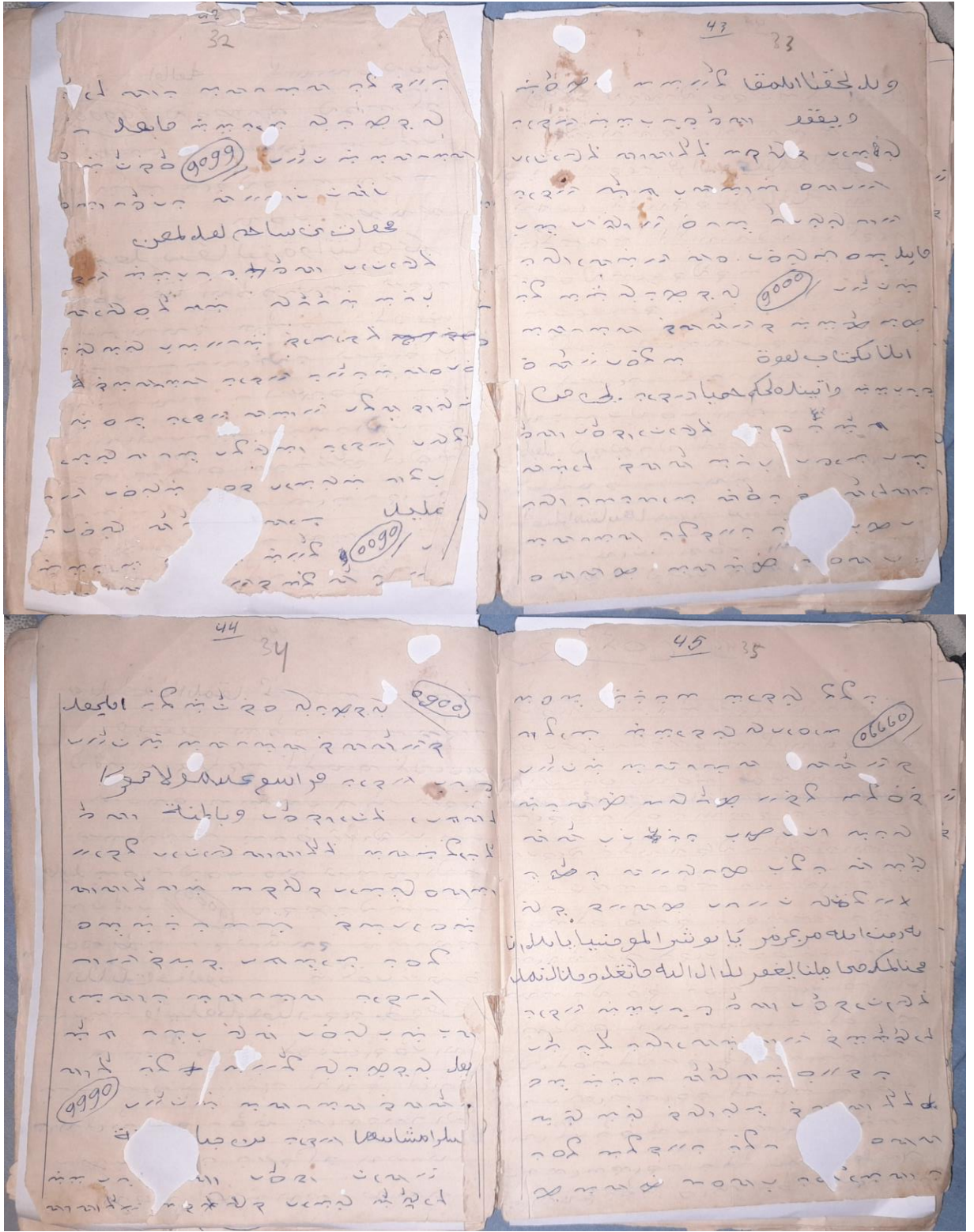
Handwritten text in Arabic script, including a circled number 9909.

40 40

Handwritten text in Arabic script, including a circled number 9909.

41 41

اوله  
 Handwritten text in Arabic script, including a circled number 9900.



46 36 (Ox) 47 37

Handwritten text in two columns on aged paper. The left column contains approximately 15 lines of text, and the right column contains approximately 15 lines. The text is written in a cursive script. There are several large white patches on the pages, likely due to damage or repair work.

48 38 49 39

Handwritten text in two columns on aged paper. The left column contains approximately 15 lines of text, and the right column contains approximately 15 lines. The text is written in a cursive script. There are several large white patches on the pages, likely due to damage or repair work.

Handwritten text in a cursive script, likely a form of Hebrew or Aramaic. The text is arranged in several lines across the page.

Handwritten text in a cursive script, likely a form of Hebrew or Aramaic. The text is arranged in several lines across the page.

Handwritten text, possibly a signature or a specific marker, enclosed in a circular shape.



Small vertical handwritten text located below the decorative flourish.

A large rectangular frame containing handwritten text. Additional text is written around the frame, including vertical columns on the left and right sides, and some diagonal lines at the bottom corners.

Handwritten text in a cursive script, likely a form of Hebrew or Aramaic. The text is arranged in several lines across the page.

54 44

1. ...  
 2. ...  
 3. ...  
 4. ...  
 5. ...  
 6. ...  
 7. ...  
 8. ...  
 9. ...  
 10. ...

55 45

1. ...  
 2. ...  
 3. ...  
 4. ...  
 5. ...

56 46

6. ...  
 7. ...  
 8. ...  
 9. ...

57 47

10. ...  
 11. ...  
 12. ...  
 13. ...



58 48

10  
 20  
 30  
 40  
 50  
 60  
 70  
 80  
 90  
 100

Handwritten text in Arabic script, including several lines of prose and a section marked 'PP'.

59 49

10  
 20  
 30  
 40  
 50  
 60  
 70  
 80  
 90  
 100

Handwritten text in Arabic script, including several lines of prose and a section marked 'PP'.

60 50

10  
 20  
 30  
 40  
 50  
 60  
 70  
 80  
 90  
 100

Handwritten text in Arabic script, including several lines of prose and a section marked 'PP'.

61 51

10  
 20  
 30  
 40  
 50  
 60  
 70  
 80  
 90  
 100

Handwritten text in Arabic script, including several lines of prose and a section marked 'PP'. A prominent Basmala is visible: *Bismillah ar-Rahman ar-Rahim*.

62 52

Handwritten text in a script, likely Burmese, on page 62. The text is arranged in approximately 15 lines. There are several large white circular marks, possibly representing holes or damage to the original document. The script is dense and appears to be a form of historical or religious text.

63 53

Handwritten text in a script, likely Burmese, on page 63. The text is arranged in approximately 15 lines. There are several large white circular marks, possibly representing holes or damage to the original document. The script is dense and appears to be a form of historical or religious text.

64 54

Handwritten text in a script, likely Burmese, on page 64. The text is arranged in approximately 15 lines. There are several large white circular marks, possibly representing holes or damage to the original document. The script is dense and appears to be a form of historical or religious text.

65 55

Handwritten text in a script, likely Burmese, on page 65. The text is arranged in approximately 15 lines. There are several large white circular marks, possibly representing holes or damage to the original document. The script is dense and appears to be a form of historical or religious text.

66 56

Handwritten text in Arabic script, page 66. The text is arranged in approximately 15 horizontal lines. There are several large, irregular white patches of damage or repair on the page, particularly in the middle and lower sections.

67 57

Handwritten text in Arabic script, page 67. The text is arranged in approximately 15 horizontal lines. There are several large, irregular white patches of damage or repair on the page, particularly in the middle and lower sections.

68 58

Handwritten text in Arabic script, page 68. The text is arranged in approximately 15 horizontal lines. There are several large, irregular white patches of damage or repair on the page, particularly in the middle and lower sections.

69 59

Handwritten text in Arabic script, page 69. The text is arranged in approximately 15 horizontal lines. There are several large, irregular white patches of damage or repair on the page, particularly in the middle and lower sections. At the bottom of the page, there is a signature in Arabic script: "بسم الله الرحمن الرحيم" (In the name of Allah, the Most Gracious, the Most Merciful).

Handwritten text in an Arabic script, likely a form of Magi script. The text is arranged in approximately 15 horizontal lines. There are several large, irregular white patches on the page, which appear to be areas where the original text has been obscured or removed. The ink is dark and the paper is aged and yellowed.

Handwritten text in an Arabic script, likely a form of Magi script. The text is arranged in approximately 15 horizontal lines. There are several large, irregular white patches on the page, which appear to be areas where the original text has been obscured or removed. The ink is dark and the paper is aged and yellowed.

Handwritten text in an Arabic script, likely a form of Magi script. The text is arranged in approximately 15 horizontal lines. There are several large, irregular white patches on the page, which appear to be areas where the original text has been obscured or removed. The ink is dark and the paper is aged and yellowed.

Handwritten text in an Arabic script, likely a form of Magi script. The text is arranged in approximately 15 horizontal lines. There are several large, irregular white patches on the page, which appear to be areas where the original text has been obscured or removed. The ink is dark and the paper is aged and yellowed.

74 64

Handwritten text in a cursive script, likely a historical document. The page contains approximately 15 lines of text. There are several large, irregular white patches on the page, which appear to be areas where the original text has been obscured or removed. The ink is dark and the paper is aged and yellowed.

75 65

Handwritten text in a cursive script, continuing from the previous page. The page contains approximately 15 lines of text. There are several large, irregular white patches on the page, which appear to be areas where the original text has been obscured or removed. The ink is dark and the paper is aged and yellowed.

76 66

Handwritten text in a cursive script, continuing from the previous page. The page contains approximately 15 lines of text. There are several large, irregular white patches on the page, which appear to be areas where the original text has been obscured or removed. The ink is dark and the paper is aged and yellowed.

77 67

Handwritten text in a cursive script, continuing from the previous page. The page contains approximately 15 lines of text. There are several large, irregular white patches on the page, which appear to be areas where the original text has been obscured or removed. The ink is dark and the paper is aged and yellowed.

78 68

Handwritten text in Arabic script, consisting of approximately 15 lines. The text is written in a cursive style on aged, yellowed paper. There are several white circular marks, likely from hole punches, and some irregular white patches, possibly from tape or damage. The script is dense and fills most of the page.

79 69

Handwritten text in Arabic script, consisting of approximately 15 lines. Similar to the previous page, it features cursive handwriting on aged paper with hole punches and some white patches. The text appears to be a continuation or a separate entry related to the previous page.

80 70

Handwritten text in Arabic script, consisting of approximately 15 lines. The handwriting is consistent with the previous pages. The paper shows signs of age and wear, including hole punches and some white patches.

81 71

Handwritten text in Arabic script, consisting of approximately 15 lines. This page also contains cursive Arabic text with similar paper characteristics and markings as the other pages.



86 76

Handwritten text in a cursive script, likely a historical or administrative document. The text is written on aged, yellowed paper with several circular holes and irregular white patches, possibly from tape or damage. The script is dense and fills most of the page.

87 77

Handwritten text in a cursive script, similar to the previous page. It features several circular holes and white patches. The text is dense and covers the majority of the page area.

88 78

Handwritten text in a cursive script. The page contains several circular holes and white patches. The text is dense and fills most of the page.

89 79

Handwritten text in a cursive script. The page contains several circular holes and white patches. The text is dense and fills most of the page.



90 80

Handwritten text in a cursive script, likely a historical form of a European language. The page contains approximately 15 lines of text. There are several large white patches, possibly from tape or damage, obscuring parts of the text. A small diagram or symbol is visible in the upper right quadrant.

91 81

Handwritten text in a cursive script, continuing from the previous page. The page contains approximately 15 lines of text. There are several large white patches, possibly from tape or damage, obscuring parts of the text. A small diagram or symbol is visible in the upper right quadrant.

92 82

Handwritten text in a cursive script, continuing from the previous page. The page contains approximately 15 lines of text. There are several large white patches, possibly from tape or damage, obscuring parts of the text. A small diagram or symbol is visible in the upper left quadrant.

93 83

Handwritten text in a cursive script, continuing from the previous page. The page contains approximately 15 lines of text. There are several large white patches, possibly from tape or damage, obscuring parts of the text. A small diagram or symbol is visible in the upper left quadrant.

94 84

Handwritten text in a cursive script, likely a historical or religious document. The text is written on aged, yellowed paper with several white patches of damage or repair. The script is dense and fills most of the page.

95 85

Handwritten text in a cursive script, continuing from the previous page. The paper shows signs of wear, including white patches and some staining. The text is written in a consistent, flowing hand.

96 86

Handwritten text in a cursive script, continuing the narrative or record. The page is heavily worn, with significant white damage at the bottom and some staining throughout. The script remains legible despite the age and damage.

97 87

Handwritten text in a cursive script, the final page shown in this set. The text is written on aged paper with white patches and some staining. The script is consistent with the previous pages, showing a continuous flow of information.

1. ...  
 2. ...  
 3. ...  
 4. ...  
 5. ...  
 6. ...  
 7. ...  
 8. ...  
 9. ...  
 10. ...  
 11. ...  
 12. ...  
 13. ...  
 14. ...  
 15. ...  
 16. ...  
 17. ...  
 18. ...  
 19. ...  
 20. ...

1. ...  
 2. ...  
 3. ...  
 4. ...  
 5. ...  
 6. ...  
 7. ...  
 8. ...  
 9. ...  
 10. ...  
 11. ...  
 12. ...  
 13. ...  
 14. ...  
 15. ...  
 16. ...  
 17. ...  
 18. ...  
 19. ...  
 20. ...

1. ...  
 2. ...  
 3. ...  
 4. ...  
 5. ...  
 6. ...  
 7. ...  
 8. ...  
 9. ...  
 10. ...



1. ...  
 2. ...  
 3. ...  
 4. ...  
 5. ...  
 6. ...  
 7. ...  
 8. ...  
 9. ...  
 10. ...  
 11. ...  
 12. ...  
 13. ...  
 14. ...  
 15. ...  
 16. ...  
 17. ...  
 18. ...  
 19. ...  
 20. ...

102 92

Handwritten text in a cursive script, likely a historical or religious document. The page contains approximately 15 lines of text, with some ink bleed-through from the reverse side. The script is dense and difficult to decipher without specialized knowledge of the language.

104 94

Handwritten text in a cursive script, continuing from the previous pages. The page contains approximately 15 lines of text, with some ink bleed-through from the reverse side. The script is dense and difficult to decipher without specialized knowledge of the language.

103 93

Handwritten text in a cursive script, continuing from the previous pages. The page contains approximately 15 lines of text, with some ink bleed-through from the reverse side. The script is dense and difficult to decipher without specialized knowledge of the language.

105 95

Handwritten text in a cursive script, continuing from the previous pages. The page contains approximately 15 lines of text, with some ink bleed-through from the reverse side. The script is dense and difficult to decipher without specialized knowledge of the language.

Handwritten text on page 107 (left side), featuring dense cursive script and some marginal notes at the top.

107 97  
 Handwritten text on page 107 (right side), featuring dense cursive script.

108 96  
 Handwritten text on page 108 (left side), featuring dense cursive script.

109 99  
 Handwritten text on page 109 (right side), featuring dense cursive script.

100 100

Handwritten text in a cursive script, likely a form of Georgian or a similar language. The text is arranged in approximately 15 horizontal lines across the page.

101 101

Handwritten text in a cursive script, continuing from the previous page. The text is arranged in approximately 15 horizontal lines across the page.

102 102

Handwritten text in a cursive script, continuing from the previous page. The text is arranged in approximately 15 horizontal lines across the page.

103 103

Handwritten text in a cursive script, continuing from the previous page. The text is arranged in approximately 15 horizontal lines across the page.







122 112

Handwritten text in a cursive script, likely a form of Arabic or Persian, covering the entire page.

123 113

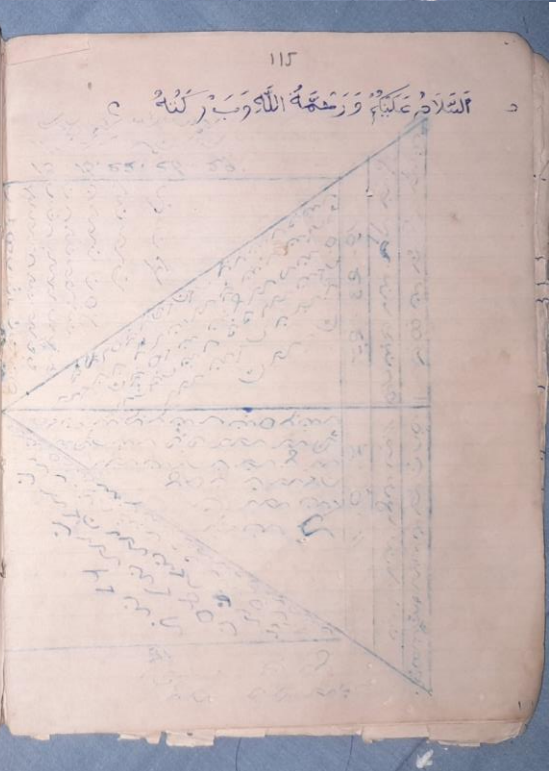
Handwritten text in a cursive script, likely a form of Arabic or Persian, covering the entire page.

124 114

Handwritten text in a cursive script, likely a form of Arabic or Persian, covering the entire page.

2-11-1940

*[Signature]*



116

117

13. 15. 22. 26. 29.

15. 18. 21. 25. 28.

19. 23. 27.

4. 17. 20. 24.

7. 10. 11.

1. 2. 3. 4.

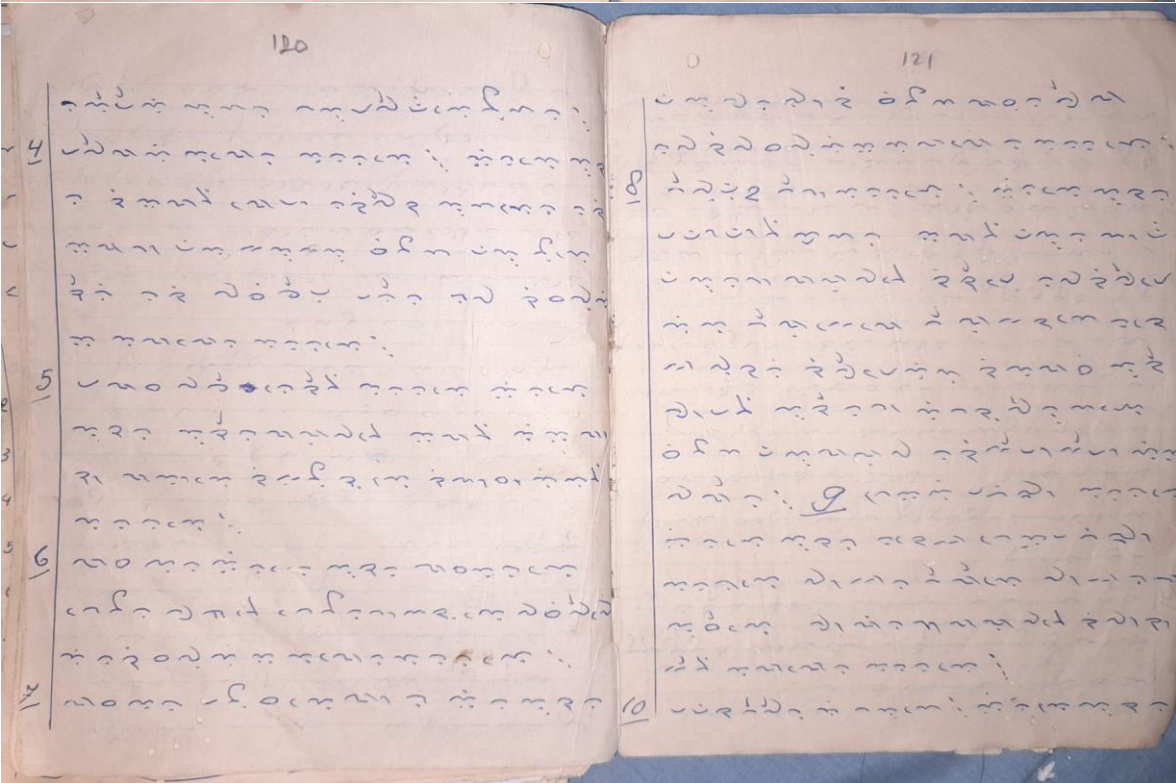
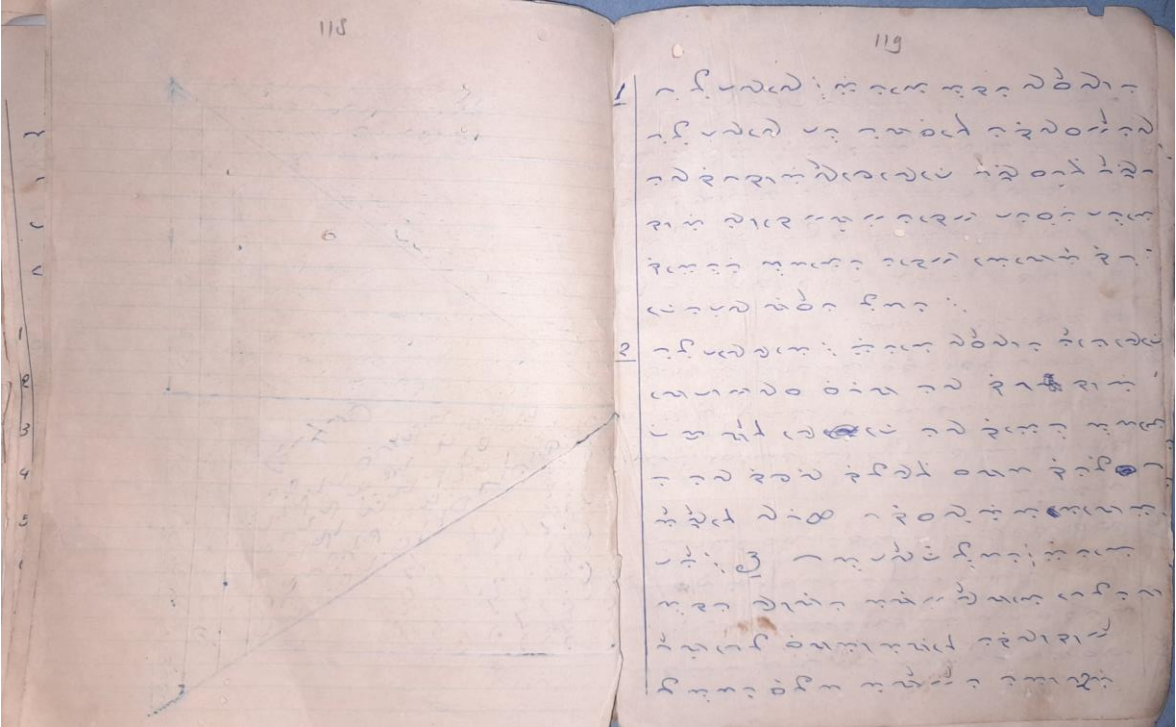
1. 2. 3. 4.

118

119

1. 2. 3. 4. 5.

1. 2. 3. 4. 5. 6. 7. 8. 9. 10. 11. 12. 13. 14. 15. 16. 17. 18. 19. 20. 21. 22. 23. 24. 25. 26. 27. 28. 29. 30. 31. 32. 33. 34. 35. 36. 37. 38. 39. 40. 41. 42.



4 120  
Handwritten text in cursive script, organized into numbered sections. The text is written on a page with a vertical margin line on the left.

121  
Handwritten text in cursive script, organized into numbered sections. The text is written on a page with a vertical margin line on the left.

172

11

12

13

Handwritten text in a cursive script, likely a historical or religious document, covering the left page of the top spread.

123

14

15

Handwritten text in a cursive script, continuing from the previous page, covering the right page of the top spread.

174

16

17

18

19

Handwritten text in a cursive script, covering the left page of the bottom spread.

125

20

21

22

23

Handwritten text in a cursive script, covering the right page of the bottom spread.

176

24 1  
 25  
 26

Handwritten text in a cursive script, likely a form of Arabic or Persian, covering the page.

177

27  
 28  
 29  
 30  
 31

Handwritten text in a cursive script, continuing from the previous page.

178

26  
 33  
 34

Handwritten text in a cursive script, including some lines that appear to be crossed out or corrected.

179

35  
 36  
 37  
 38  
 39

Handwritten text in a cursive script, continuing the text from the previous page.

176

26  
 40  
 1  
 2  
 3  
 4  
 5  
 6  
 7  
 8  
 9  
 10  
 11  
 12

26  
 40  
 1  
 2  
 3  
 4  
 5  
 6  
 7  
 8  
 9  
 10  
 11  
 12

*Waisii*  
 Mub. Jussa  
 Singgac Pegeri  
 Abbatunje  
 Salama

131

26  
 41  
 42  
 1  
 2  
 3  
 4  
 5  
 6  
 7  
 8  
 9  
 10  
 11  
 12

26  
 41  
 42  
 1  
 2  
 3  
 4  
 5  
 6  
 7  
 8  
 9  
 10  
 11  
 12

## LAMPIRAN 2

### DAFTAR INFORMAN

1. Nama: Mas'ati  
Umur : 45 Tahun  
Pekerjaan: Ibu Rumah Tangga  
Alamat: Lausa, Empengnge Desa Goarie, Kec. Marioriwawo, Kab. Soppeng



2. Nama: Isawi  
Umur: 89 Tahun  
Pekerjaan: Lansia  
Alamat: Lausa, Empengnge Desa Goarie, Kec. Marioriwawo, Kab. Soppeng
3. Nama: Sunardi  
Umur: 52 Tahun  
Pekerjaan: Petani  
Alamat: Lausa, Empengnge Desa Goarie, Kec. Marioriwawo, Kab. Soppeng
4. Nama: Bahera  
Umur: 53 Tahun  
Pekerjaan: Ibu Rumah Tangga  
Alamat: Lausa, Empengnge Desa Goarie, Kec. Marioriwawo, Kab. Soppeng