

- Agustrina, R. 2008. Perkecambahan dan Pertumbuhan Kecambah *Leguminoceae* di Bawah Pengaruh Medan Magnet. Jurusan Biologi FMIPA Universitas Lampung. Lampung.
- Aryanto dan Siti Chuzaemi. 2020. Leguminosa Pohon Pakan Potensial Mitigasi Metan Pada Ternak Ruminansia. Media Nusa Creative. Malang.
- Bachtiar, B. 2017. Pengaruh Skarifikasi Dan Pemberian Hormon Tumbuh Terhadap Perkecambahan Benih Aren (*Arenga pinnata. Merr*) di Persemaian. Jurnal Ilmu Alam dan Lingkungan. 8 (2) : 37-44.
- Danuarti. 2005. Uji Cekaman Kekeringan Pada Tanaman. Jurnal Ilmu Pertanian. 11 (1) : 22-31.
- Dharma, S., Sakka Samudin, A., & Eka, I. P. 2015. Perkecambahan Benih Pala (*Myristica Fragrans Houtt.*) Dengan Metode Skarifikasi Dan Perendaman ZPT Alami. Doctoral dissertation, Tadulako University.
- Ditjen Tanaman Pangan. 1991. Petunjuk pengawas benih. Jakarta (Indonesia) : Direktorat Bina Produksi Padi dan Palawija Sub Direktorat pengawasan Mutu dan Sertifikasi Benih.
- Elam, M., S. Land. 2000. Tree Seed Technology Training Course : Instructors Manual. United State Departmen of Agriculture. New Orleans.
- Fazal, H., Shinwari Z. K, Ahmad N, Abbasi B. H. 2016. Factors influencing in vitro seed germination, morphogenetic potential and correlation of secondary metabolism with tissue development in *Prunella vulgaris*. Pak. Journal Botani. 48 (1) : 193-200.
- Hardianti PS, Hanum C, Charloq. 2014. Daya kecambah dan pertumbuhan *Mucuna bracteata* melalui pematangan dormansi dan pemberian zat pengatur tumbuh giberelin (ga3). *J Agroekotekmol.* 2 : 630-644.
- Hassen A ., W.A . Van Niekerk, N.F.G. Rethman and T.J . Tjelele. 2006. Intakeand in vivo digestibility of *Indigofera* forage compared to *Medicagosativa* and *Leucaenaleucocephala* by sheep. South African J .I Anim. Sci. 36 : 67-70.
- Hassen, A., N. F. G. Rethman, Van Niekerk, and T. J. Tjelele. 2007. Influence of season/year and species on chemical composition and in vitro digestibility of five *Indigofera* Accessions. *J. Anim. Feed Sci. Technol.* 136 : 312-322.
- Hutasoit, R., Riyadi., Ginting, SP. 2017. Pengaruh Suhu Perendaman terhadap Pertumbuhan Kecambah Benih *Indigofera zollingeriana*. Prosiding Seminar Nasional Teknologi Peternakan dan Veteriner.

- Junaidi, F. Ahmad. 2021. Pengaruh Suhu Perendaman Terhadap Pertumbuhan Vigorbiji Kopi Lampung (*Coffeacanephora*). Jurnal Inovasi Penelitian. 2 (7) : 1911- 1916.
- Kartasapoetra A. G. 2003. Teknologi benih Pengolahan benih. Jakarta (Indonesia) : Rineka Cipta.
- Lakitan, B. 2007. Fisiologi Pertumbuhan dan Perkembangan Tanaman. PT Raja Grafindo Persada, Jakarta.
- Latue, P. C., Rampe, H. L., & Rumondor, M. 2019. Uji Pematangan Dormansi Menggunakan Asam Sulfat Berdasarkan Viabilitas Dan Vigor Benih Pala (*Myristica Fragrans Houtt.*). Jurnal Ilmiah Sains, 19 (1) : 13-21.
- Lubis YA, Melya R, Afif B. 2014. Pengaruh lama waktu perendaman dengan air terhadap daya berkecambah trembesi (*Samanea saman*). *J Sylva Lest.* 2 : 25-32.
- Mudiana, D. 2007. Perkecambahan *Syzygium cumini* (L.) Skeels. Biodiversitan. 8 (1) : 39-42.
- Mulik, Y. M., S. Vertygo, V. E. Se'u, B. Y. Tang. 2021. Daya Kecambah *Indigofera Zollingeriana* Akibat Perendaman Menggunakan Asap Cair Dengan Konsentrasi Berbeda. *Journal of Tropical Animal Science and Technology.* 3 (1) : 36-44.
- Nugraha Y. S., Sumarni T., dan Sulistyono R. 2014. Pengaruh Interval Waktu dan Tingkat Pemberian Air Terhadap Pertumbuhan dan Hasil Tanaman Kedelai (*Glycine max* (L) Merril.). *Jurnal Produksi Tanaman.* Vol 2(7): 552-559.
- Nurjaya, Sema, Nurcaya. 2021. Produksi Hijauan, Komposisi Botani dan Kapasitas Tampung di Padang Pengembalaan Alam pada Musim Hujan. *Jurnal Ilmu dan Industri Peternakan.* 7 (2) : 125-132.
- Nurlaha, A. Setiana, N. S. Asminaya. 2014. Identifikasi Jenis Hijauan Makanan Ternak Di Lahan Persawahan Desa Babakan Kecamatan Dramaga Kabupaten Bogor. *Jitro.* 1 (1) : 54-62.
- Rantan, K, J. Sirait, A. Traigan, K. Simanuhuruk. 2012. *Indigofera* sebagai Pakan Ternak. Badan Penelitian dan Pengembangan Pertanian. Jakarta.
- Ruwanda, Rahmad. 2019. Pengaruh Jenis Perendaman Biji *Indigofera zollingeriana* terhadap Perkecambahan dan Pertumbuhan Benih. Sarjana thesis, Universitas Brawijaya.
- Sirait J, Simanuhuruk K, Hutasoit R. 2009. The potency of *Indigofera* sp. As

goat feed : production, nutritive value and palatability. Dalam : Proceeding of International Seminar on Forage Based Feed Resources. Bandung (indones) : Food and Fertilizer Technology Centre (FFTC) ASPAC, Livestock Research Centre-COA, ROC and IRIAP : 4-7.

Song A., Ballo, Maria. 2010. *peranan Air Dalam Perkecambahan Biji*. Jurnal Ilmiah Sains, 10 (2). pp. 190-195. ISSN 1412-3770.

Suita, E., & Syamsuwida, D. (2015). Peningkatan Daya dan Kecepatan Berkecambah Benih Malapari (*Pongamia pinnata*). Balai Penelitian Teknologi Perbenihan Tanaman Hutan.

Sunarto, T . 2001. Analisis korelasi dan koefisien lintasan hasil padi sawah pada lahan keracunan Fe. *J. Penelitian Pertanian Tanaman Pangan*. Vol. 18 (2).

Sutopo, 2002. Teknologi Benih. Fakultas Pertanian. UNBRAW. Malang.

Sylvia, I. 2009. Pengaruh IBA dan NAA terhadap Stek *Aglonema Var. Donna Carmen* dengan Perendaman. Skripsi. Fakultas Pertanian. IPB. Bogor.

Tjelele, T. J. 2006. Dry Matter Production, Intake and Nutritive Value of Certain Indigofera Species. Pretoria. M. Inst. Agrar. University of Pretoria.

Wahab, M. K dan Dewi R. 2003. Pengaruh Ukuran dan Pencucian Benih Terhadap Viabilitas Benih. *Jurnal Penelitian Tanaman Industri*. XIX (1) : 38-41.

Wilson PG, Rowe R. 2008. A revision of the Indigofereae (Fabaceae) in Australia. 2. Indigofera species with trifoliolate and alternately pinnate leaves. *TELOPEA J Plant Syst*. 12 : 293-307.

Yafur, F. N., S. D. Rumetor, O, Yoku. 2017. Pengaruh Suhu Rendaman Dan Media Tumbuh Terhadap Daya Kecambah Benih Dan Pertumbuhan Tanaman *Indigofera Zollingeriana*. Cassowary. 2 (2) : 176-192.

Yanuartono, Y., A. Nururrozi, S. Indarjulianto, H. Purnamaningsih, dan S. Rahardjo. 2008. Urea Manfaat Pada Ruminansia. *Jurnal Ilmu-Ilmu Peternakan*. 28 (1) : 10-34.

Lampiran 1. Hasil olah data SPSS

Daya cambah benih

Between-Subjects Factors

		Value Label	N
Suhu	1	27	5
	2	40	5
	3	60	5
	4	80	5

Descriptive Statistics

Dependent Variable: Daya cambah benih

Suhu	Mean	Std. Deviation	N
27	2,4.0000	15.09967	5
40	51.6000	20.70749	5
60	38.0000	21.58703	5
80	58.8000	17.35511	5
Total	43.1000	22.05710	20

Levene's Test of Equality of Error Variances^a

Dependent Variable: Daya cambah benih

F	df1	df2	Sig.
.292	3	16	.831

Tests the null hypothesis that the error variance of the dependent variable is equal across groups.

a. Design: Intercept + Perlakuan

Tests of Between-Subjects Effects

Dependent Variable: Daya cambah benih

Source	Type III Sum of Squares	df	Mean Square	F	Sig.
Corrected Model	3547.800 ^a	3	1182.600	3.322	.047
Intercept	37152.200	1	37152.200	104.360	.000
Perlakuan	3547.800	3	1182.600	3.322	.047

Error	5696.000	16	356.000	
Total	46396.000	20		
Corrected Total	9243.800	19		

a. R Squared = .384 (Adjusted R Squared = .268)

Multiple Comparisons

Dependent Variable: Dayaambah benih

	(I) Suhu	(J) Suhu	Mean Difference (I-J)	Std. Error	Sig.	95% Confidence Interval	
						Lower Bound	Upper Bound
LSD	27	40	-27.6000*	11.93315	.034	-52.8971	-2.3029
		60	-14.0000	11.93315	.258	-39.2971	11.2971
		80	-34.8000*	11.93315	.010	-60.0971	-9.5029
	40	27	27.6000*	11.93315	.034	2.3029	52.8971
		60	13.6000	11.93315	.271	-11.6971	38.8971
		80	-7.2000	11.93315	.555	-32.4971	18.0971
	60	27	14.0000	11.93315	.258	-11.2971	39.2971
		40	-13.6000	11.93315	.271	-38.8971	11.6971
		80	-20.8000	11.93315	.101	-46.0971	4.4971
	80	27	34.8000*	11.93315	.010	9.5029	60.0971
		40	7.2000	11.93315	.555	-18.0971	32.4971
		60	20.8000	11.93315	.101	-4.4971	46.0971

Based on observed means.

The error term is Mean Square(Error) = 356.000.

*. The mean difference is significant at the .05 level.

Dayaambah benih

	Suhu	N	Subset	
			1	2
Duncan ^a	27	5	24.0000	
	60	5	38.0000	38.0000

40	5		51.6000
80	5		58.8000
Sig.		.258	.117

Means for groups in homogeneous subsets are displayed.

Based on observed means.

The error term is Mean Square(Error) = 356.000.

a. Uses Harmonic Mean Sample Size = 5.000.

Suhu

Dependent Variable: Dayaambah benih

Suhu	Mean	Std. Error	95% Confidence Interval	
			Lower Bound	Upper Bound
27	24.000	8.438	6.112	41.888
40	51.600	8.438	33.712	69.488
60	38.000	8.438	20.112	55.888
80	58.800	8.438	40.912	76.688

Tinggi kecambah

Between-Subjects Factors

		Value Label	N
Suhu	1	27	5
	2	40	5
	3	60	5
	4	80	5

Descriptive Statistics

Dependent Variable: Tinggi kecambah

Suhu	Mean	Std. Deviation	N
27	2.7000	1.35093	5
40	4.7800	1.49231	5
60	3.5000	1.97990	5
80	4.4000	1.37659	5
Total	3.8450	1.66274	20

Levene's Test of Equality of Error Variances^a

Dependent Variable: Tinggi kecambah

F	df1	df2	Sig.
.232	3	16	.873

Tests the null hypothesis that the error variance of the dependent variable is equal across groups.

a. Design: Intercept + Perlakuan

Tests of Between-Subjects Effects

Dependent Variable: Tinggi kecambah

Source	Type III Sum of Squares	df	Mean Square	F	Sig.
Corrected Model	13.062 ^a	3	4.354	1.765	.194
Intercept	295.681	1	295.681	119.866	.000
Perlakuan	13.062	3	4.354	1.765	.194
Error	39.468	16	2.467		
Total	348.210	20			
Corrected Total	52.530	19			

Levene's Test of Equality of Error Variances^a

Dependent Variable: Tinggi kecambah

F	df1	df2	Sig.
.232	3	16	.873

Tests the null hypothesis that the error variance of the dependent variable is equal across groups.

a. R Squared = .249 (Adjusted R Squared = .108)

Panjang akar

Between-Subjects Factors

	Value Label	N
Suhu	1	27
	2	40
	3	60
	4	80

Descriptive Statistics

Dependent Variable: Panjang akar primer

Suhu	Mean	Std. Deviation	N
27	.4000	.14142	5
40	.7200	.35637	5
60	.4400	.19494	5
80	.5600	.11402	5
Total	.5300	.24083	20

Levene's Test of Equality of Error Variances^a

Dependent Variable: Panjang akar primer

F	df1	df2	Sig.
7.058	3	16	.003

Tests the null hypothesis that the error variance of the dependent variable is equal across groups.

a. Design: Intercept + Perlakuan

Tests of Between-Subjects Effects

Dependent Variable: Panjang akar primer

Source	Type III Sum of Squares	Df	Mean Square	F	Sig.
Corrected Model	.310 ^a	3	.103	2.088	.142

Intercept	5.618	1	5.618	113.495	.000
Perlakuan	.310	3	.103	2.088	.142
Error	.792	16	.049		
Total	6.720	20			
Corrected Total	1.102	19			

a. R Squared = .281 (Adjusted R Squared = .147)

Keseragaman tumbuh

Between-Subjects Factors

	Value Label	N
Suhu	1	27
	2	40
	3	60
	4	80

Descriptive Statistics

Dependent Variable: Keseragaman tumbuh

Suhu	Mean	Std. Deviation	N
27	2.0000	.70711	5
40	3.8000	1.78885	5
60	1.8000	.44721	5
80	4.6000	2.19089	5
Total	3.0500	1.82021	20

Levene's Test of Equality of Error Variances^a

Dependent Variable: Keseragaman tumbuh

F	df1	df2	Sig.
10.585	3	16	.000

Tests the null hypothesis that the error variance of the dependent variable is equal across groups.

a. Design: Intercept + Perlakuan

Tests of Between-Subjects Effects

Dependent Variable:Keseragaman tumbuh

Source	Type III Sum of Squares	df	Mean Square	F	Sig.
Corrected Model	28.150 ^a	3	9.383	4.314	.021
Intercept	186.050	1	186.050	85.540	.000
Perlakuan	28.150	3	9.383	4.314	.021
Error	34.800	16	2.175		
Total	249.000	20			
Corrected Total	62.950	19			

a. R Squared = .447 (Adjusted R Squared = .344)

Multiple Comparisons

Dependent Variable:Keseragaman tumbuh

	(I) Suhu	(J) Suhu	Mean Difference (I-J)	Std. Error	Sig.	95% Confidence Interval	
						Lower Bound	Upper Bound
LSD	27	40	-1.8000	.93274	.072	-3.7773	.1773
		60	.2000	.93274	.833	-1.7773	2.1773
		80	-2.6000*	.93274	.013	-4.5773	-.6227
	40	27	1.8000	.93274	.072	-.1773	3.7773
		60	2.0000*	.93274	.048	.0227	3.9773
		80	-.8000	.93274	.404	-2.7773	1.1773
	60	27	-.2000	.93274	.833	-2.1773	1.7773
		40	-2.0000*	.93274	.048	-3.9773	-.0227
		80	-2.8000*	.93274	.008	-4.7773	-.8227
	80	27	2.6000*	.93274	.013	.6227	4.5773
		40	.8000	.93274	.404	-1.1773	2.7773
		60	2.8000*	.93274	.008	.8227	4.7773

Based on observed means.

The error term is Mean Square(Error) = 2.175.

*. The mean difference is significant at the .05 level.

Keseragaman tumbuh

	Suhu	N	Subset	
			1	2
Duncan ^a	60	5	1.8000	
	27	5	2.0000	
	40	5	3.8000	3.8000
	80	5		4.6000
	Sig.		.058	.404

Means for groups in homogeneous subsets are displayed.

Based on observed means.

The error term is Mean Square(Error) = 2.175.

a. Uses Harmonic Mean Sample Size = 5.000.

Suhu

Dependent Variable: Keseragaman tumbuh

Suhu	Mean	Std. Error	95% Confidence Interval	
			Lower Bound	Upper Bound
27	2.000	.660	.602	3.398
40	3.800	.660	2.402	5.198
60	1.800	.660	.402	3.198
80	4.600	.660	3.202	5.998

Jumlah daun

Between-Subjects Factors

		Value Label	N
Suhu	1	27	5
	2	40	5
	3	60	5
	4	80	5

Descriptive Statistics

Dependent Variable:Jumlah daun

Suhu	Mean	Std. Deviation	N
27	2.4000	3.36155	5
40	6.6000	3.84708	5
60	.4000	.89443	5
80	6.4000	4.27785	5
Total	3.9500	4.11000	20

Levene's Test of Equality of Error Variances^a

Dependent Variable:Jumlah daun

F	df1	df2	Sig.
1.550	3	16	.240

Tests the null hypothesis that the error variance of the dependent variable is equal across groups.

a. Design: Intercept + Perlakuan

Tests of Between-Subjects Effects

Dependent Variable:Jumlah daun

Source	Type III Sum of Squares	df	Mean Square	F	Sig.
Corrected Model	140.150 ^a	3	46.717	4.134	.024
Intercept	312.050	1	312.050	27.615	.000
Perlakuan	140.150	3	46.717	4.134	.024
Error	180.800	16	11.300		

Total	633.000	20		
Corrected Total	320.950	19		

a. R Squared = .437 (Adjusted R Squared = .331)

Multiple Comparisons

Dependent Variable:Jumlah daun

	(I) Suhu	(J) Suhu	Mean Difference (I-J)	Std. Error	Sig.	95% Confidence Interval	
						Lower Bound	Upper Bound
LSD	27	40	-4.2000	2.12603	.066	-8.7070	.3070
		60	2.0000	2.12603	.361	-2.5070	6.5070
		80	-4.0000	2.12603	.078	-8.5070	.5070
	40	27	4.2000	2.12603	.066	-.3070	8.7070
		60	6.2000*	2.12603	.010	1.6930	10.7070
		80	.2000	2.12603	.926	-4.3070	4.7070
	60	27	-2.0000	2.12603	.361	-6.5070	2.5070
		40	-6.2000*	2.12603	.010	-10.7070	-1.6930
		80	-6.0000*	2.12603	.012	-10.5070	-1.4930
80	27	4.0000	2.12603	.078	-.5070	8.5070	
	40	-.2000	2.12603	.926	-4.7070	4.3070	
	60	6.0000*	2.12603	.012	1.4930	10.5070	

Based on observed means.

The error term is Mean Square(Error) = 11.300.

*. The mean difference is significant at the .05 level.

Jumlah daun

	Suhu	N	Subset	
			1	2
Duncan ^a	60	5	.4000	
	27	5	2.4000	2.4000
	80	5		6.4000

	40	5	6.6000
	Sig.	.361	.078

Means for groups in homogeneous subsets are displayed.

Based on observed means.

The error term is Mean Square(Error) = 11.300.

a. Uses Harmonic Mean Sample Size = 5.000.

Suhu

Dependent Variable: Jumlah daun

Suhu	Mean	Std. Error	95% Confidence Interval	
			Lower Bound	Upper Bound
27	2.400	1.503	-.787	5.587
40	6.600	1.503	3.413	9.787
60	.400	1.503	-2.787	3.587
80	6.400	1.503	3.213	9.587

Rerata hari kecambah

Between-Subjects Factors

		Value Label	N
Suhu	1	27	5
	2	40	5
	3	60	5
	4	80	5

Descriptive Statistics

Dependent Variable: Rerata hari kecambah

Suhu	Mean	Std. Deviation	N
27	5.4000	1.67332	5
40	4.0000	.70711	5
60	3.8000	.44721	5
80	3.8000	.44721	5
Total	4.2500	1.11803	20

Levene's Test of Equality of Error Variances^a

Dependent Variable: Rerata hari kecambah

F	df1	df2	Sig.
3.666	3	16	.035

Tests the null hypothesis that the error variance of the dependent variable is equal across groups.

a. Design: Intercept + Perlakuan

Tests of Between-Subjects Effects

Dependent Variable: Rerata hari kecambah

Source	Type III Sum of Squares	df	Mean Square	F	Sig.
Corrected Model	8.950 ^a	3	2.983	3.225	.051
Intercept	361.250	1	361.250	390.541	.000
Perlakuan	8.950	3	2.983	3.225	.051
Error	14.800	16	.925		
Total	385.000	20			

Tests of Between-Subjects Effects

Dependent Variable:Rerata hari kecambah

Source	Type III Sum of Squares	df	Mean Square	F	Sig.
Corrected Model	8.950 ^a	3	2.983	3.225	.051
Intercept	361.250	1	361.250	390.541	.000
Perlakuan	8.950	3	2.983	3.225	.051
Error	14.800	16	.925		
Total	385.000	20			
Corrected Total	23.750	19			

a. R Squared = .377 (Adjusted R Squared = .260)

Multiple Comparisons

Dependent Variable:Rerata hari kecambah

	(I)	(J)	Mean Difference (I-J)	Std. Error	Sig.	95% Confidence Interval	
						Lower Bound	Upper Bound
LSD	27	40	1.4000*	.60828	.035	.1105	2.6895
		60	1.6000*	.60828	.018	.3105	2.8895
		80	1.6000*	.60828	.018	.3105	2.8895
	40	27	-1.4000*	.60828	.035	-2.6895	-.1105
		60	.2000	.60828	.747	-1.0895	1.4895
		80	.2000	.60828	.747	-1.0895	1.4895
	60	27	-1.6000*	.60828	.018	-2.8895	-.3105
		40	-.2000	.60828	.747	-1.4895	1.0895
		80	.0000	.60828	1.000	-1.2895	1.2895
80	27	-1.6000*	.60828	.018	-2.8895	-.3105	
	40	-.2000	.60828	.747	-1.4895	1.0895	
	60	.0000	.60828	1.000	-1.2895	1.2895	

Based on observed means.

The error term is Mean Square(Error) = .925.

*. The mean difference is significant at the .05 level.

Rerata hari kecambah

	Suhu	N	Subset	
			1	2
Duncan ^a	60	5	3.8000	
	80	5	3.8000	
	40	5	4.0000	
	27	5		5.4000
	Sig.		.760	1.000

Means for groups in homogeneous subsets are displayed.

Based on observed means.

The error term is Mean Square(Error) = .925.

a. Uses Harmonic Mean Sample Size = 5.000.

Suhu

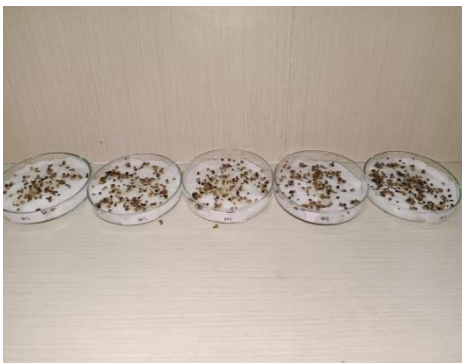
Dependent Variable: Rerata hari kecambah

Suhu	Mean	Std. Error	95% Confidence Interval	
			Lower Bound	Upper Bound
27	5.400	.430	4.488	6.312
40	4.000	.430	3.088	4.912
60	3.800	.430	2.888	4.712
80	3.800	.430	2.888	4.712

Lampiran 2. Foto-foto Hasil Penelitian



Ket : Alat dan bahan yang digunakan Ket : Biji Indigofera direndam selama 24 jam



Ket : Hari pertama disemai



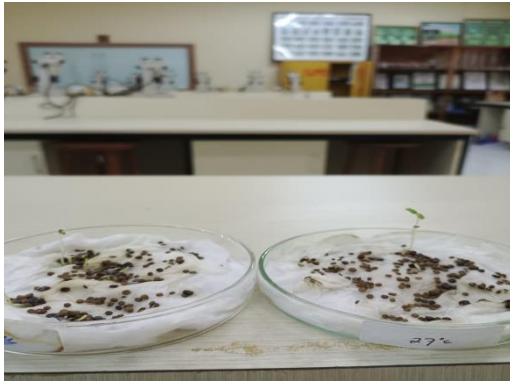
Ket : Hari kedua disemai



Ket : Hari ketiga disemai



Ket : Hari keempat disemai



Ket : Hari kelima disemai



Ket : Hari keenam disemai



Ket : Hari ketujuh disemai



Ket : Hari kedelapan disemai



Ket : Hari kesembilan disemai



Ket : Hari kesepuluh disemai



Ket : Hari kesebelas disemai



Ket : Hari kedua belas disemai



Ket : Pengukuran tinggi kecambah



Ket : Pengukuran panjang akar primer

RIWAYAT HIDUP



Ramlah Asdar adalah nama lengkap dari penulis biasa disapa dengan Elaa, lahir di Ulo, pada tanggal 10 Januari 1999 sebagai anak pertama dari empat bersaudara, anak pasangan suami istri Asdar dan Hasnawati. Penulis berasal dari Kabupaten Barru. Penulis menjalani Jenjang pendidikan formal yang pernah ditempuh yaitu SD Inpres No. 37 Batulappa pada tahun 2006 dan selesai pada tahun 2012 setelah itu melanjutkan pendidikan sekolah menengah pertama di SMP Negeri 3 Balusu pada tahun 2012 dan selesai pada tahun 2014 setelah tamat penulis melanjutkan sekolah menengah atas pada tahun 2014 dan tamat pada tahun 2017 di di SMA Negeri 1 Barru. Pada saat duduk di bangku SD saya mengikuti kegiatan ekstrakurikuler begitupun saat SMP hingga SMA, penulis aktif berorganisasi di Pramuka, PMR. Hobby penulis adalah membaca. Impian penulis adalah membahagiakan orang tua serta keluarga dan bercita-cita menjadi pengusaha sukses. Setelah tamat SMA penulis mencoba mendaftar di suatu instansi perguruan tinggi Negeri yang ternama dan terkenal di Indonesia dan penulis diterima di Perguruan Tinggi Negeri (PTN), Fakultas Peternakan, Universitas Hasanuddin, Makassar, dengan jalur undangan SNMPTN. Disini penulis banyak merasakan arti sebuah kekeluargaan dan kebersamaan setelah melewati berbagai kegiatan. Harapan penulis selama dibangku kuliah dapat menjadi mahasiswa yang berprestasi, dan bisa mengamalkan ilmunya kepada adik-adiknya dan masyarakat sekitar. Motto hidup dari penulis yaitu “Jangan Menunggu, Tidak Ada Waktu Yang Tepat”.