

## DAFTAR PUSTAKA

1. Ghodsi S, Arzani S, Shekarian M, Aghamohseni MM. Cement selection criteria for full coverage restorations: A comprehensive review of literature. *J Clin Exp Dent*. 2021;13(11):1154-1161.
2. Leung GKH, Wong AWY, Chu CH, Yu OY. Update on Dental Luting Materials. *Dent J*. 2022;10 (11):208.
3. Khajuria RR, Singh R, Barua P, Hajira N, Gupta N, Thakkar RR. Comparison of Film Thickness of Two Commercial Brands of Glass Ionomer Cement and One Dual-Cured Composite: An in Vitro Study. *The Journal of Contemporary Dental Practice*. 2017;18(8):670-674.
4. Alofi RS. Comparative Evaluation of Film Thickness and Temperature of Different Luting Cements: An In Vitro Study. *World Journal of Dentistry*. 2019;10(6):428-431.
5. Jubhari EH, Habar ID, Dharmautama M. Pengaruh Penggunaan Bur Halus Pada Kekasaran Permukaan Oklusal Terhadap Kekuatan Tarik Semen Luting. *Dentika Dental Journal*. 2012;17(2):162-166.
6. Chin HL, Shiou ShSH. Luting Agents in Prosthodontics. *Asian J Dent Sci*. 2021;4(4):69-78.
7. Heboyan AG, Vardanyan AR, Avestisyan AA. Cement Selection in Dental Practice. *WORLD Sci*. 2019;2(3):4-9.
8. Somani R, Jaidka S, Singh DJ, Sibal GK. Comparative Evaluation of Shear Bond Strength of Various Glass Ionomer Cements to Dentin of Primary Teeth: An in vitro Study. *International Journal of Clinical Pediatric Dentistry*. 2016;9(3):192-196.
9. Diansari V, Ningsih D, Moulinda C. Evaluasi Kekasaran Permukaan Glass Ionomer Cement (GIC) Konvensional Setelah Perendaman Dalam Minuman Berkarbonasi. *Cakradonya Dent J*. 2016;8(2):111–6.
10. Arifah N, Widhianingsih D, Pratiwi D. Evaluasi Kekasaran Permukaan Semen Ionomer Kaca pada Perendaman Susu UHT dan Susu Kedelai. *e-GiGi*. 2022;11(1):15–9.

11. Zoergiebel J, Illie N. An in vitro Study on The Maturation of Conventional Glass Ionomer Cements and Their Interface to Dentin. *Acta Biomaterialia* . 2013;9:9529-9537.
12. Alkhalidi, E.F., Tahlal, H., Amer A.T. 2014. Mechanical properties of New Calcium Based Cement Prepared From Egg Shell. *IJERSTE*. 3(3):70-72.
13. Kinasih CP, Indahyani DE, Barid I, Probosari N. Analisa Kebocoran Tepi pada Glass Ionomer Kaca dengan Penambahan Bioactive Glass Berbasis Silica dari Ampas Tebu. *J.K.G Unej*. 2018;15(2):37-42.
14. Kheur M, Kantharia N, Iakha T, Kheur S, Husain NAH, Özcan M. Evaluation of mechanical and adhesion properties of glass ionomer cement incorporating nano-sized hydroxyapatite particles. *Odontology*. 2020;108(1):66-73.
15. Tao SY, Wang FF, Naz K, et al. Nano-hydroxyapatite Use in Oral Medicine: A Review. *Int J Mater Sci Appl*. 2022;11(3):62-65
16. Suharsono. Biodiversitas Biota Laut Indonesia. Pusat Penelitian Oseanografi Lembaga Ilmu Pengetahuan Indonesia. 2014:1-7.
17. Rahman IA, Masudi SM, Luddin N, Shiekh RA. One-pot Synthesis of Hydroxiapatite-Silica Nanopowder Composite for Hardness Enhancement of Glass Ionomer Cement (GIC). *Bulletin of Materils Science*. 2014;37(2);213-219.
18. Sulastri S, Kristianingrum S. Berbagai Macam Senyawa Silika: Sintesis, Karakterisasi dan Pemanfaatan. Fakultas MIPA Universitas Negeri Yogyakarta. 2010.
19. Akhter F. et al . A Comprehensive Review of Synthesis, Applications and Future Prospects for Silica Nanoparticles (SNPs). *J. Silicon*. 2022 ; 14(14) : 8296.
20. Jiangkongkho P., Arksornnukit M., Takahashi H. The synthesis, modification, and application of nanosilica in polymethyl methacrylate denture base. *J. Dental Materials*. 2018 ; 37(4) : 582.

21. Lepicka M, Rodziewicz, Kawalec M, Nowicka K, Tsybrii Y, Kurzydowski KJ. Diatomaceous Earth as drug-Loaded Carrier in Glass Ionomer Cement. *Journal of the Mechanical Behavior of Biomedical Materials*. 2022.
22. Felemban NH, Ebrahim MI. Effects of adding Slica Particles on Certain Properties of Resin-Modified Glass Ionomer Cement. *European Journal of Dentistry*. 2016. 10(2):226-229.
23. Nishigawa G, Maruo Y, Irie M, Tamada Y. 2012. Available: [https://www.researchgate.net/publication/266804130\\_Nano\\_Silica\\_Improves\\_Bending\\_Properties\\_of\\_Glass\\_Ionomer\\_Cement](https://www.researchgate.net/publication/266804130_Nano_Silica_Improves_Bending_Properties_of_Glass_Ionomer_Cement)
24. McCabe, John F. *Applied Dental Materials Ninth Edition*. UK: Blackwell Munksgaard. 2008.
25. Manappallil JJ. *Basic Dental Matrials*. 4th ed. Jaypee Brothers Medical Publishers; 2016.
26. Sidhu S, Nicholson J. A Review of Glass Ionomer Cements for Clinical Dentistry. *Journal of Functional Biomaterials*. 2016;7(16): 3.
27. Anusavice KJ., Shen C., Rawls HR. *Phillips' Science of Dental Material 12th Ed* . United State : Elsevier Ltd. 2015: 475.
28. Manesh KP, Iyer MS, Swamy R, Patil K, Raghunath N. Biomaterials and Their Applications in Dentistry – A Literature Review. *J Evolution Med Dent Sci*. 2021;10(26):1940-1947.
29. Sukmana I, Risano AYE, Wicaksono MA, Saputra RA. Perkembangan dan Aplikasi Dalam Bidang Kedokteran Modern: A Review. *Jurnal Sains dan Teknologi*.2022;1(5):635-646.
30. Tuna EB, Oshida Y, Ozen B, Gjorgievska E, Tuzuner T. Biomaterils for Dental Applications. *Biomed Research International*.2017.
31. Diao J., et al. (2021). Silicon dioxide nanoparticles induced neurobehavioral impairments by disrupting microbiota–gut–brain axis. *Journal of Nanobiotechnology*.2021 ; 19(1) : 174–175.

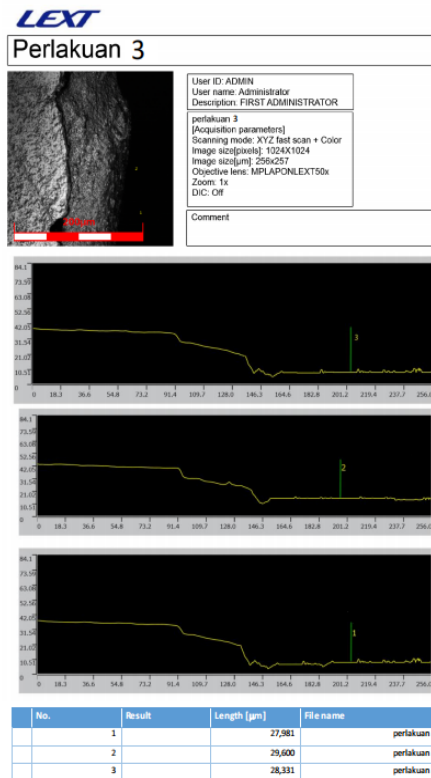
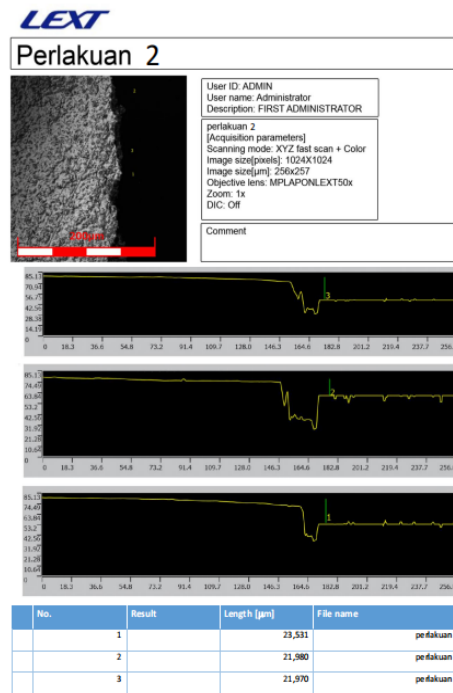
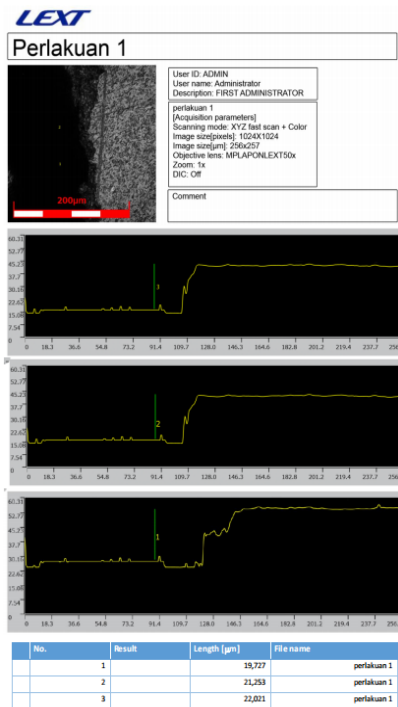
32. Chasanah E. Protein dari Biota Laut dan Potensinya dalam Industri Yang Menggunakan Teknologi Nano-Silika. *Squalen*. 2007;2(2):51-57.
33. Adiatama AR. Synthesis and Characteristic of Nano Silica from Geothermal Sludge : Effect of Surfactant. *J. Metalurgi*. 2021 ; 37(2) : 73.
34. Akhter F. et al . A Comprehensive Review of Synthesis, Applications and Future Prospects for Silica Nanoparticles (SNPs). *J. Silicon*. 2022 ; 14(14) : 8296.
35. Edhy, W.A., 2003. Plankton di lingkungan PT. Central Pertiwi Bahari. PT. Central Pertiwi Bahari. Tulang Bawang.
36. Sanjaya F, Danakusuma E. Evaluasi Kerja Pertumbuhan Diatom (*Thalassiosira* sp) Yang Diberi Dosis Silikat. *Jurnal Satya Minabahari*. 2018;3(2):82-93.
37. Ridawati. (2015). Teknik Kultur *Thalassiosira* sp untuk pakan alami larva udang vaname *Litopenaeus vannamei* (Bonne) PT. Central Pertiwi Bahari Takalar Sulawesi Selatan.
38. Rebekah, MK. 2009. *Thalassiosira weissflogii*. USGS Nonindigenous Aquatic Species Database, Gainesville, FL. URL: <http://nas.er.usgs.gov/queries/Factsheet.asp?speciesID=1693> Revision Date: 8/13/2007.
39. Amalia, P.A.N 2019. Teknik Pemberian Pakan Alami *Thalassiosira* sp dan *Skeletonema costatum* Pada Stadia Zoea-Mysis Larva Udang Vaname (*Litopenaeus Vanammei*). BPBA Jepara, Jawa Tengah.
40. Hussain CM. (Ed.). *Handbook of Nanomaterials in Analytical Chemistry Modern Trends in Analysis 1 st Ed.* United States : Elsevier, 2020:396.
41. . Grumezescu AM. (Ed.). *Nanobiomaterials in Hard Tissue Engineering 1 st Ed.* Oxford : Elsevier, 2016 : 288.
42. Trivana L., Sugiarti S., Rohaeti E. (2015). Sintesis dan Karakterisasi Natrium Silikat ( $\text{Na}_2\text{SiO}_3$ ) dari Sekam Padi. *J. Sains dan Teknologi Lingkungan*. 2015 ; 7(2) : 68–70.
43. Renika D., Wijaya M., Pratiwi DE. Pengaruh Konsentrasi Natrium Hidroksida (NaOH) Dalam Sintesis Nanosilika Dari Tongkol Jagung

- dengan Metode Kopersipitasi. *Chemica: J. Ilmiah Kimia Dan Pendidikan Kimia*. 2021 ; 22(2) : 59.
44. Huljana M., Rodiah S. Sintesis Silika dari Abu Sekam Padi dengan Metode Sol-gel. *Prosiding Seminar Nasional Sain Dan Teknologi Terapan*, Palembang. 2019 : 4–5.
  45. Elma M. *Proses Sol Gel : Analisis, Fundamental dan Aplikasi* (1st ed.). Banjarmasin : Lambung Mangkurat University Press, 2016 : 16.
  46. Bhushan B. (Ed.). (2012). *Encyclopedia of Nanotechnology* (1st ed.). New York : Springer Ltd. 2012 : 2465.
  47. Kumar A., Yadaf N., Bhatt M., Mishra NK., Chaudhary P., Singh R. . SolGel Derived Nanomaterials and It's Applications : A Review. *J. Res. Of Chemical Sciences*. 2015 ; 5(12) : 99–100.
  48. Kious AR, Roberts HW, Brackett WW. Film Thickness of Recently Introduced Luting Cements. *The Journal of Prosthetic Dentistry*. 2009;101:189-192.
  49. R Bagheri. Film Thickness and Flow Properties of Resin-Based Cements at Different Temperatures. *J Dent Shiraz Univ Med Scien*. 2013;14(2):57-63.
  50. Sulaiman TA,abdulmajeed AA, Altitinch A, Ahmed SN, Donovan TE. Physical Properties, Film Thickness, and Bond Strengths of Resin Modified Glass-Ionomer Cements According to Their Delivery Method. *Journal of Prosthodontics*. 2018:1-6.
  51. Maharani RN, Wibowo EA, Aripin D, Fadil MR. Perbedaan nilai Kekasaran Permukaan Semen Glass Ionomer (GIC) dan Modifikasi Resin Semen Glass Ionomer (RMGIC) Akibat Efek Cairan Lambung Buatan secara In Vitro. *Padj J Dent Research and Students*. Oktober, 2017.
  52. Sinamo Sopan. Nanosilika Dari Sekam Padi Sebagai Penguat Lapisan Opak Pada Retainer Gigi Tiruan Jembatan Keramik Logam. <https://repositori.usu.ac.id/handle/123456789/86851>
  53. Yasrin, Alimuddin, Panggabean AS. Pembuatan Silika Gel dari Abu Daun Bambu Petung dan Aplikasinya Untuk Adsorpsi Ion Cd(II). *Jurnal Atomik*, 2020;05(2): 107-113.

54. Okoronkwo EA, Imoisili PE, Olusunle SOO. Extraction and Characterization of Amorphous Silica from Corn Cob Ash by Sol-Gel Method. *Chemistry and Materials Research*. 2013;3(4):2225-956.
55. Sankar S, et all. Rapid Sonochemical Synthesis of Spherical Silica Nanoparticles Derived from Brown Rice Husk. *Ceramics international*, 2018;44(7):8720-8724.

# LAMPIRAN

## Output CLSM untuk Ketebalan Lapisan





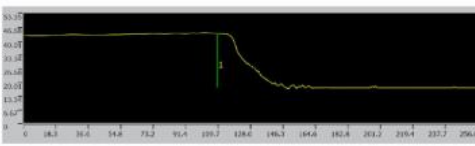
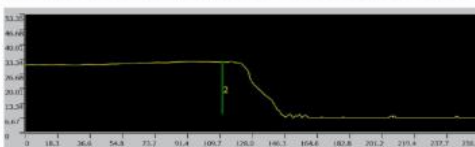
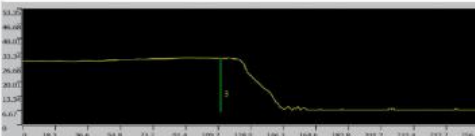
### Kontrol Negatif-1



User ID: ADMIN  
 User name: Administrator  
 Description: FIRST ADMINISTRATOR

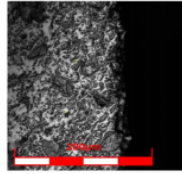
kontrol negatif-1  
 [Acquisition parameters]  
 Scanning mode: XYZ fast scan + Color  
 Image #z[pxels]: 1024X1024  
 Image #x[μm]: 256x257  
 Objective lens: MPLAPONLEXT50x  
 Zoom: 1x  
 DIC: Off

Comment



No.	Result	Length [μm]	File name
1		24,270	kontrol negatif-1
2		24,940	kontrol negatif-1
3		23,230	kontrol negatif-1

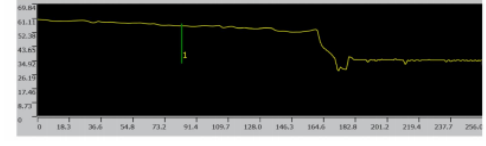
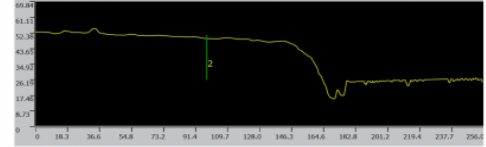
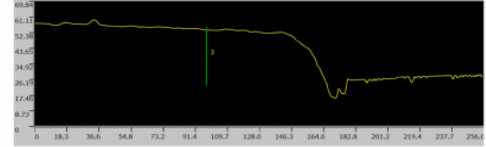
### Kontrol Positif



User ID: ADMIN  
 User name: Administrator  
 Description: FIRST ADMINISTRATOR

kontrol positif  
 [Acquisition parameters]  
 Scanning mode: XYZ fast scan + Color  
 Image #z[pxels]: 1024X1024  
 Image size[μm]: 256x257  
 Objective lens: MPLAPONLEXT50x  
 Zoom: 1x  
 DIC: Off

Comment



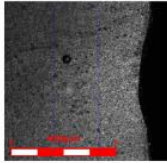
No.	Result	Length [μm]	File name
1		25,470	kontrol positif
2		26,210	kontrol positif
3		28,330	kontrol positif

## Output CLSM untuk Kekasaran Permukaan





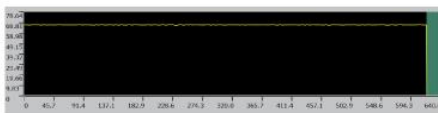
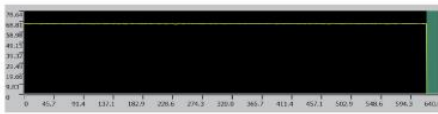
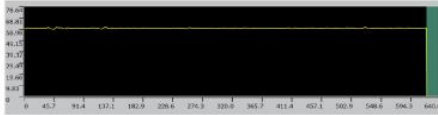
### Kontrol Negatif-2



User ID: ADMIN  
 User name: Administrator  
 Description: FIRST ADMINISTRATOR

kontrol negatif-2  
 [Acquisition parameters]  
 Scanning mode: XYZ fast scan + Color  
 Image size[pixels]: 1024x1024  
 Image size[um]: 640x640  
 Objective lens: MPLAPONLEXT20x  
 Zoom: 1x  
 DIC: Off

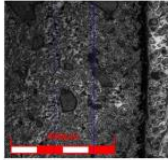
Comment



No.	Result	Rp[um]	Rv[um]	Rz[um]	Rc[um]	Rt[um]	Ra[um]	Rq[um]	Ac[um]	h	File name
1		0.180	0.196	0.376	0.279	0.865	0.183	0.107	25.000	-	kontrol negatif-2
2		0.309	0.292	0.681	0.427	1.958	0.194	0.108	25.000	-	kontrol negatif-2
3		0.309	0.292	0.681	0.427	1.958	0.117	0.108	25.000	-	kontrol negatif-2



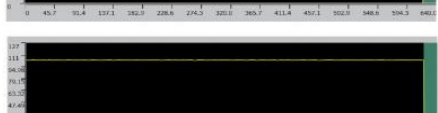
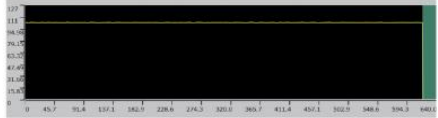
### Kontrol Positif-1



User ID: ADMIN  
 User name: Administrator  
 Description: FIRST ADMINISTRATOR

kontrol positif-1  
 [Acquisition parameters]  
 Scanning mode: XYZ fast scan + Color  
 Image size[pixels]: 1024x1024  
 Image size[um]: 640x640  
 Objective lens: MPLAPONLEXT20x  
 Zoom: 1x  
 DIC: Off

Comment



No.	Result	Rp[um]	Rv[um]	Rz[um]	Rc[um]	Rt[um]	Ra[um]	Rq[um]	Ac[um]	h	File name
1		0.398	0.387	0.796	0.178	2.866	0.181	0.238	25.000	-	kontrol positif-1
2		0.148	0.163	0.312	0.263	0.715	0.142	0.091	25.000	-	kontrol positif-1
3		0.148	0.163	0.312	0.263	0.715	0.117	0.091	25.000	-	kontrol positif-1

## Alat dan Bahan Penelitian

