

DAFTAR PUSTAKA

1. Gautam A, Jain S. Assessment of Prevalence of Periodontal Disease and Treatment Needs in the General Population: A Hospital Based Study. *Galore International Journal of Health Sciences and Research*. 2019; 4(2): p. 13
2. Bogdanovska L, Kukeska S, Popovska M, Petkovska R, Goracinova. Therapeutic Strategies in the Treatment of Periodontitis. *Macedonian Pharmaceutical Bulletin*. 2012; 58(1,2): p. 3,4
3. Loos BG, Craandijk J, Hoek FJ, Paulien ME, Dillen W, Velden UVD. Evaluation of Systemic Markers Related to Cardiovascular Diseases in the Peripheral Blood of Periodontitis Patients; *Journal of Periodontology*. 2000; 7(10): 1528.
4. Kementrian Kesehatan Republik Indonesia. Laporan Nasional RISKESDAS. 2018: p. 207
5. Nayak A, Bhat K, Shivanaikar S, Pushpa P, Kugaji M, Kumbar V. Detection of Red Complex Organism in Chronic Periodontitis by Multiplex Polymerase Chain Reacion. *Journal of Advanced Clinical & Research Insights*. 2018; 5(5): p. 139
6. Shi D. Interleukin – 6 – 572C/G Polymorphphism is Associated with the Risk of Chronic Periodontitis. 2017; 28(15): p. 6637
7. Shao MY, Huang P, Cheng R, Hu T. Interleukin – 6 Polymorphism Modify the Risk of Periodontitis: A Systematic Review and Meta-analysis. *Journal of Zhejiang University*. 2009; 10(12): p. 920
8. Assem NZ, Alves MLF, Lopes AB, Gualberto EC, Garcia VG, Theodora LH. Antibiotic Therapy as an Adjunct to Scaling and Root Planing in Smokers: A Systematic Review and Meta-analysis. *Brazillian Oral Research*. 2017; 31(67): p. 2
9. Rams TE, Degener JE, Winkelhoof AJV. Antibiotic Resistance in Human Chronic Periodontitis Microbiota. *Journal of Periodontology*. 2014; 85(1): p. 161
10. Farjami B, Nematollahi MA, Moradi Y, Irajian GR, Nazemi M, Ardebili A, dkk. Antibacterial Activity of the Sea Cucumber *Holothuria leucospilota*/ *International Journal of Molecular and Clinical Microbiology*. 2013; p. 228
11. Ebrahimi H, Vazirizadeh A, Nabipour L, Najafi A, Tajbakhsh S, Nafisi BM. In Vitro Study of Antibacterial Activities of Ethanol, Methanol and Acetone Extracts From Sea Cucumber *Holothuria parva*. *Iranian Journal of Fisheries Sciences*. 2018; 173(3): p. 547
12. Himaya SWA, Ryu BM, Qian ZJ, Kim SK. Sea Cucumber, *Stichopus japonicas* Ethyl Acetate Fraction Modulates the Lipopolysaccharide Induced iNOS and COX-2 via MAPK Signaling Pathway in Murine Macrophages. *Environment Toxicology and Phamarology*. 2010; 30: p. 75
13. Bordbar S, Anwar F, Saari N. High-value Components and Bioactives from Sea Cucumbers for Functional Foods - A Review. *Marine Drugs*. 2011; 9: p. 1763 -89

14. Kinane DF, Stathopoulou PG, Papapanou PN. Periodontal Diseases. Nature Reviews. 2017; 3: p. 2,3
15. Newman MG, Takei HH, Klokkevold PR, Carranza FA. Newman and Carranza's Clinical Periodontology. 13th ed. Philadelphia: Elsevier;2018.p. 410, 411
16. Lang NP, Lindhe J. Clinical Periodontology and Implant Dentistry 6th ed. West Sussex, John Wiley & Sons, 2015: p. 385-7
17. Quamilla N. Stres dan Kejadian Periodontitis (Kajian Literatur). Journal of Syiah Kuala Dentistry Society. 2016; 1(2); p. 162,163
18. Soeroso A. Sitokin. Jurnal Oftalmologi Indonesia. 2007; 5(3): p. 172
19. Oliveira CMB, Sakata RK, Issy AM, Gerola LR, Salmao R. Cytokines and Pain. Brazilian Journal of Anesthesiology. 2011; 61(2): p. 256
20. Irawati L, Acang N, Irawati N. Ekspresi Tumor Necrosis Faktor- Alfa (TNF- α) dan Interleukin – 10 (IL-10) pada Infeksi Malaria Falciparum. Majalah Keodkteran Andalas. 2008; 1(32): p. 18
21. Zhang JM, Jianxiong. Cytokines, Inflammation and Pain. International Anesthesiology Clinics. 2007; 45(2): p. 2-4
22. Dinarello CA, Proinflammatory Cytokines. Impact of Basic Research on Tomorrow's Medicine. 2000; 118(2): p. 504
23. Opal SM, DePalo VA. Anti-Inflammatory Cytokines. Impact of Basic Research on Tomorrow's Medicine. 2000; 117 (4): p. 1165
24. Sabir A, Sumidarti A. Interleukin – 6 Expression on Inflamed Rat Dental Pulp Tissue After Capped with *Trigona sp.* Propolis from South Sulawesi, Indonesia. Saudi Journal of Biological Sciences. 2017: p. 1036
25. Gorgun EP, Toker H, Korkmaz EM, Poyraz O. IL-6 and IL-10 Gene Polymorphism in Patients with Aggressive Periodontitis: Effect on GCF, Serum and Clinic Parameters. Brazilion Oral Research. 2017; 31(12): p. 2
26. Tawfig N. Proinflammatory Cytokines and Periodontal Disease. Journal of Dental Problems and Solutions. 2016; 3(1): p. 13,14
27. Lindberg TY, Bage T. Inflammatory Mediators in the Pathogenesis of Periodontitis. Expert Reviews in Molelucar Medicine. 2013: p. 6-8
28. Putram NM, Setyaningsih I, Tarman K, Nursid M. Aktivitas Antikanker dari Fraksi Aktif Teripang. Jurnal Pengolahan Hasil Perikanan Indonesia. 2017; 20(1): p. 54
29. Dhinakaran DI, Lipton AP. Pharmacological Potentials of Sea Cucumber *Holothuria Atra* Extracts from the Indian Ocean. Asian Journal of Biomedical and Phamaceutical Scienes. 2014; 4(35): p. 39-41
30. Arudina I, Yulianti Soesilawati P, Damaiyanti D, Maharani D. The Effect of Golden Sea Cucumber (*Stichopus hermanii*) on the Number of Lymphocytes during the Healing Process of Traumatic Ulcer on Wistar Rat's Oral Mucous. Makalah Kedokteran Gigi. 2015; 48(2): p. 102, 103
31. Ibrahim NM, Alias A, NOraini NN, Kamarudin SS, LI AR, Hasan MKN. Sea Cucumber as Inhibitor Of Bacterial Adhesion in Dental Plaque: Would This Be A Possible Reality? Interantional Journal for Studies on Children, Women, Eldery and Disabled. 2018; 4: p. 147
32. Dharmawati IA, Mauaba IBP, Thahir H, Bakta MI, Astawa INM, Sukrama DM, et al. Pocket Measurement Methods In Wistar Rats Periodontitis

- Induced by Bacteria And The Installation Of Silk Ligature: An Experimental Studies. *International Journal of Applied Phamaceutics*. 2019; 11(4): 72.
33. Pradina P. Teripang Indonesia : Komposisi Jenis Dan Sejarah Perikanan. *Oseana*. 2005;XXX(2):11-18.
 34. Shujuan S, Wenjing F, Song H, Shixiu L, Nina A, Youngjun M. Bioactive Compounds of Sea Cucumbers and Their Therapeutic Effects. *Chinese Journal of Oceanology and Limnology*. 2014; p. 6
 35. Berakdar M, Callaway A, Eddin MF, Rob A, Willerhasuen B. Comparison Between Scaling-Root-Planing (SRP) and SRP/Photodynamic Therapy; Six Month Study. *Head and Face Medicine*. 2012; 8(12); 4,5
 36. Swerts AA, Santos BFE, Bruzadelli SR, Briagao MRPL, Lima DC, Fernandes LA. Treatment of Experimental Periodontal Disease by Laser Therapy in Simvastatin – Modified Rats. *Journal of Applied Science*. 2017; 25(4); 393 – 394
 37. Uslu MO, Eltas A, Marakoglu I, Dundar S, Sahin K, Ozercan IH. Effect of Diode Laser Application on Inflammation and MPO in Periodontal Tissues in A Rat Model. *Journal of Applied Science*. 2018; 28: p. 10 – 11.
 38. Meseli SE, Kuru B, Kuru L. Relationships Between Initial Probing Depth and Changes in The Clinical Parameters Following Non-Surgical Periodontal Treatment in Chronic Periodontitis. 2017; 51(3): p. 15.
 39. Goutoudi P, Diza E, Arvanitidou M. Effect of Periodontal Therapy on Crevicular fluid Interleuki – 6 and Interleukin – 8 Levels in Chronic Periodontitis. *International Journal of Dentistry*. 2012; p. 5 – 6.
 40. WIjesinghe WAJP, Varappan CS, Jeon YJ. Exploitation of Health Promoting Potentials of Edible Sea Cucumber (*Holothuria Edulis*): Searhc of New Bioactive Components as Functional Ingredients. *International Proceedings of Chemical, Biological, and Enviromental Engineering*. 2015; 86: p. 39 – 40.
 41. Song J, Li T, Cheng X, Ji X, Gao D, Du M, et al. Sea Cucumber Peptides Exert Anti-Inflammatory Activity Through Suppressing NF-kB and MAPK and Inducing HO-1 in RAW 264.7 Macrophages. 2015. p. 6 -7
 42. Olievera-Castillo L, Grant G, Kantun-Moreno N, Acevedo JJ, Puc-Sosa M, Montero J, et al. Sea Cucumber (*Isostichopus badionotus*) Body – Wall Preparations Exert Anti-inflammatory Activity In vivo. *PharmaNutrition*. 2018. p. 13 -14
 43. Anggraini CP, Parishni K, Widyastuti. The Effect if Sea Cucumber Powder and Hyperbaric Oxygen Therapy on The Expression of *Tumor Necrosis Factor Alfa* in Rats with Diabetes Mellitus Induced by *Porphyromonas gingivalis*. *Denta Jurnal Kedokteran Gigi*. 2016; 10(1): p. 85 – 86.
 44. Aziza LS, Parishni K, Mulawarmanti D. The Effect of Golden Sea Cucumber (*Stichopus hermanii*) and Hyperbaric Oxygen Therapy to The Expression of Osteoprotegerin in Diabetes Mellitus Induce by *Porphyromonas gingivalis* Bacteria. *Denta Jurnal Kedokteran Gigi*. 2016; 10(2): p. 171 – 2.

45. Soltani M, Baharara J, Namvar F. Evaluation of Cytotoxicity and Anti-Inflammatory Effects of Saponin Isolated from *Holothuria leucospilota* Sea Cucumber. *Journal of Cellular Immunotherapy*. 2015. p. 4 -5.
46. Hossain A, Dave D, Sahidi F. Northern Sea Cucumber (*Cucumaria frondosa*): A Potential Candidate for Functional Food, Nutraceutical, and Pharmaceutical Sector. *Marine Drugs*. 2020; 18(274):p. 17- 18
47. Chen C, Han X, Dong P, Li Z, Yanagita T, Xue C, Zhang T et al. Sea Cucumber Saponins Liposomes Ameliorate Obesity – Induced Inflammation and Insulin Resistance in High – Fat Diet – Fed Mice. *Food and Function*. 2017. p. 10 – 12.
48. Lubis P, Nasution R, Ilyas S, Ervina I, Primasari A. Effectiveness of 1% Curcumin Gel Subgingival Application on Interleukin – 6 Levels in Chronic Periodontitis Patients. *International Journal of Applied Dental Sciences*. 2020; 6(3): p. 3.

Lampiran

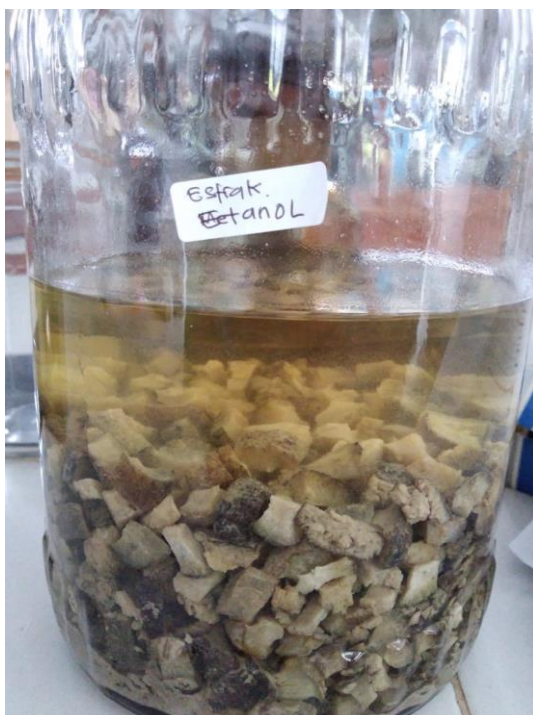
1. Foto Kegiatan Penelitian



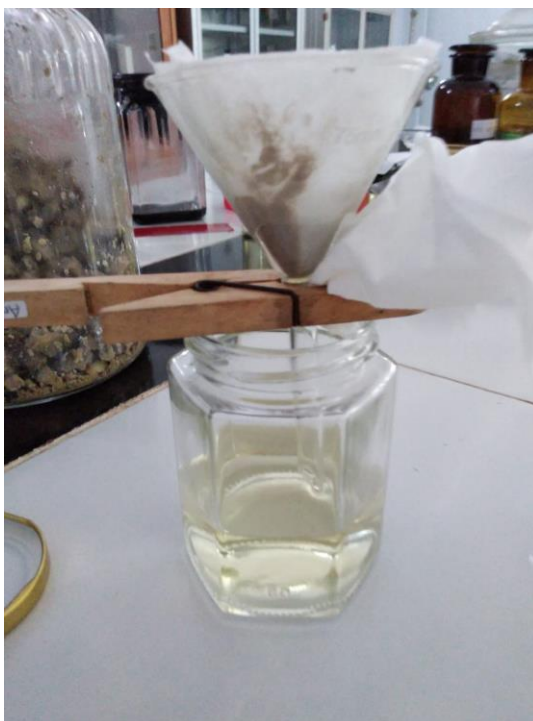
Timun laut yang telah dipotong ditimbang dan diblender.



Timun laut direndam menggunakan larutan etanol selama 72 jam



Hasil perendaman 72 jam pada larutan etanol



Hasil perendaman disaring menggunakan kertas saring



Hasil penyaringan disimpan pada wadah kaca



Alat rotavapor yang digunakan untuk mengambil ekstrak timun laut



Dilakukan Rotavapor untuk memisah pelarut dan ekstrak



Ekstrak timun laut setelah dilakukan rotavapor



Pemeliharaan tikus dan akan dipisah menjadi 3 sampai 4 tikus perwadah



Penimbangan berat badan tikus wistar



Dilakukan anastesi pada tikus menggunakan HCL



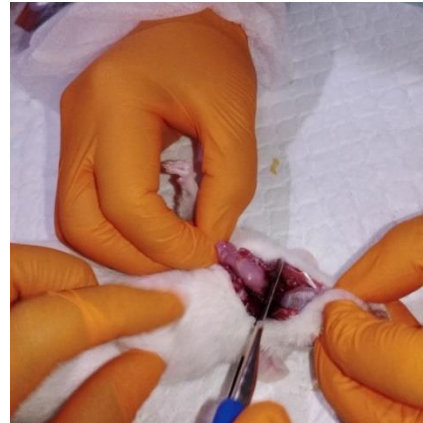
Induksi bakteri *Porphyromonas ginigvalis* dan ligasi pada gigi anterior tikus



Keadaan gingiva tikus 3 hari setelah induksi bakteri



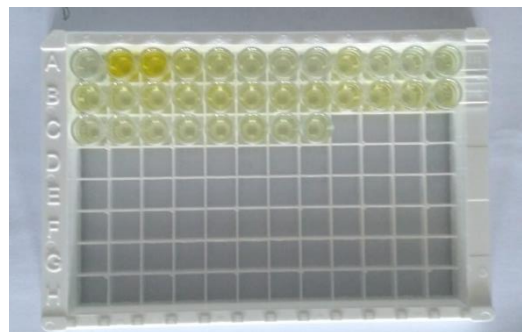
Pemberian ekstrak timun laut pada kelompok perlakuan sehari sekali selama tiga hari



Tikus disacrifice dan rahang bawah tikus dipotong dan dibagi dua untuk dianalisis lebih lanjut



Jaringan dimasukkan ke dalam wadah kaca dan disimpan di suhu -20°C



Pewarnaan jaringan yang akan dianalisis.

LAMPIRAN ANALISIS IL-6 dan MMP-9

MEANS TABLES=IL_6 MMP9 BY Kelompok Pengamatan
/CELLS=MEAN COUNT STDDEV.

Means

Notes		
Output Created		05-DEC-2020 10:56:14
Comments		
Input	Data	D:\Office\SPSS\Data 2 Residen Perio.sav
	Active Dataset	DataSet39
	Filter	<none>
	Weight	<none>
	Split File	<none>
	N of Rows in Working Data File	24
Missing Value Handling	Definition of Missing	For each dependent variable in a table, user-defined missing values for the dependent and all grouping variables are treated as missing.
	Cases Used	Cases used for each table have no missing values in any independent variable, and not all dependent variables have missing values.
Syntax		MEANS TABLES=IL_6 MMP9 BY Kelompok Pengamatan /CELLS=MEAN COUNT STDDEV.
Resources	Processor Time	00:00:00.03

Case Processing Summary

	Included		Cases Excluded		Total	
	N	Percent	N	Percent	N	Percent
IL_6 * Kelompok	24	100.0%	0	0.0%	24	100.0%
MMP9 * Kelompok	24	100.0%	0	0.0%	24	100.0%
IL_6 * Pengamatan	24	100.0%	0	0.0%	24	100.0%
MMP9 * Pengamatan	24	100.0%	0	0.0%	24	100.0%

IL_6 MMP9 * Kelompok

Kelompok		IL_6	MMP9
Kontrol	Mean	5.9010	1.1598
	N	12	12
	Std. Deviation	.81367	.18525
Perlakuan	Mean	6.3773	1.1335
	N	12	12
	Std. Deviation	.67830	.10645
Total	Mean	6.1391	1.1467
	N	24	24
	Std. Deviation	.77192	.14837

IL_6 MMP9 * Pengamatan

Pengamatan		IL_6	MMP9
H3	Mean	5.7648	1.0779
	N	12	12
	Std. Deviation	.79815	.12078
H7	Mean	6.5135	1.2154
	N	12	12
	Std. Deviation	.55056	.14531
Total	Mean	6.1391	1.1467
	N	24	24
	Std. Deviation	.77192	.14837

```

EXAMINE VARIABLES=IL_6 MMP9
  /PLOT BOXPLOT STEMLEAF NPLOT
  /COMPARE GROUPS
  /STATISTICS DESCRIPTIVES
  /CINTERVAL 95
  /MISSING LISTWISE
  /NOTOTAL.

```

Explore

Notes

Output Created		05-DEC-2020 10:56:21
Comments		
Input	Data	D:\Office\SPSS\Data 2 Residen Perio.sav
	Active Dataset	DataSet39
	Filter	<none>
	Weight	<none>
	Split File	<none>
	N of Rows in Working Data File	24
Missing Value Handling	Definition of Missing	User-defined missing values for dependent variables are treated as missing.
	Cases Used	Statistics are based on cases with no missing values for any dependent variable or factor used.
Syntax	EXAMINE VARIABLES=IL_6 MMP9 /PLOT BOXPLOT STEMLEAF NPLOT /COMPARE GROUPS /STATISTICS DESCRIPTIVES /CINTERVAL 95	

		/MISSING LISTWISE
		/NOTOTAL.
Resources	Processor Time	00:00:02.81
	Elapsed Time	00:00:04.34

Case Processing Summary

	Cases					
	Valid		Missing		Total	
	N	Percent	N	Percent	N	Percent
IL_6	24	100.0%	0	0.0%	24	100.0%
MMP9	24	100.0%	0	0.0%	24	100.0%

Descriptives

		Statistic	Std. Error	
IL_6	Mean	6.1391	.15757	
	95% Confidence Interval for Mean	Lower Bound	5.8132	
		Upper Bound	6.4651	
	5% Trimmed Mean	6.1708		
	Median	6.1885		
	Variance	.596		
	Std. Deviation	.77192		
	Minimum	4.43		
	Maximum	7.27		
	Range	2.84		
	Interquartile Range	1.34		
	Skewness	-.624	.472	
	Kurtosis	-.358	.918	
MMP9	Mean	1.1467	.03029	
	95% Confidence Interval for Mean	Lower Bound	1.0840	
		Upper Bound	1.2093	
	5% Trimmed Mean	1.1441		
	Median	1.1360		
	Variance	.022		
	Std. Deviation	.14837		
	Minimum	.87		
	Maximum	1.48		

Range	.60	
Interquartile Range	.19	
Skewness	.237	.472
Kurtosis	-.139	.918

Tests of Normality

	Kolmogorov-Smirnov ^a			Shapiro-Wilk		
	Statistic	df	Sig.	Statistic	df	Sig.
IL_6	.170	24	.071	.945	24	.214
MMP9	.072	24	.200*	.990	24	.996

*. This is a lower bound of the true significance.

a. Lilliefors Significance Correction

```
T-TEST GROUPS=Kelompok(1 2)
/MISSING=ANALYSIS
/VARIABLES=IL_6 MMP9
/CRITERIA=CI(.95).
```

T-Test

Notes

Output Created		05-DEC-2020 10:56:49
Comments		
Input	Data	D:\Office\SPSS\Data 2 Residen Perio.sav
	Active Dataset	DataSet39
	Filter	<none>
	Weight	<none>
	Split File	<none>
	N of Rows in Working Data File	24
Missing Value Handling	Definition of Missing	User defined missing values are treated as missing.
	Cases Used	Statistics for each analysis are

		based on the cases with no missing or out-of-range data for any variable in the analysis.
Syntax		T-TEST GROUPS=Kelompok(1 2) /MISSING=ANALYSIS /VARIABLES=IL_6 MMP9 /CRITERIA=CI(.95).
Resources	Processor Time	00:00:00.02
	Elapsed Time	00:00:00.03

Group Statistics

	Kelompok	N	Mean	Std. Deviation	Std. Error Mean
IL_6	Kontrol	12	5.9010	.81367	.23489
	Perlakuan	12	6.3773	.67830	.19581
MMP9	Kontrol	12	1.1598	.18525	.05348
	Perlakuan	12	1.1335	.10645	.03073

Independent Samples

		Levene's Test for Equality of Variances				
		F	Sig.	t	df	Sig.
IL_6	Equal variances assumed	.196	.662	-1.558	22	
	Equal variances not assumed			-1.558	21.310	
MMP9	Equal variances assumed	3.430	.077	.427	22	
	Equal variances not assumed			.427	17.550	

```
T-TEST GROUPS=Pengamatan(1 2)
/MISSING=ANALYSIS
/VARIABLES=IL_6 MMP9
/CRITERIA=CI(.95) .
```

T-Test

Notes

Output Created		05-DEC-2020 10:56:57
Comments		
Input	Data	D:\Office\SPSS\Data 2 Residen Perio.sav
	Active Dataset	DataSet39
	Filter	<none>
	Weight	<none>
	Split File	<none>
	N of Rows in Working Data File	24
Missing Value Handling	Definition of Missing	User defined missing values are treated as missing.
	Cases Used	Statistics for each analysis are based on the cases with no missing or out-of-range data for any variable in the analysis.
Syntax	T-TEST GROUPS=Pengamatan(1 2) /MISSING=ANALYSIS /VARIABLES=IL_6 MMP9 /CRITERIA=CI(.95).	
Resources	Processor Time	00:00:00.03
	Elapsed Time	00:00:00.02

Group Statistics

	Pengamatan	N	Mean	Std. Deviation	Std. Error Mean
IL_6	H3	12	5.7648	.79815	.23041
	H7	12	6.5135	.55056	.15893
MMP9	H3	12	1.0779	.12078	.03487
	H7	12	1.2154	.14531	.04195

Independent Samples

Levene's Test for Equality of Variances

		F	Sig.	t	df	S
IL_6	Equal variances assumed	2.297	.144	-2.675	22	
	Equal variances not assumed			-2.675	19.535	
MMP9	Equal variances assumed	.346	.562	-2.522	22	
	Equal variances not assumed			-2.522	21.289	

MEANS TABLES=IL_6 MMP9 BY Kelompok BY Pengamatan
/CELLS=MEAN COUNT STDDEV.

Means

Notes

Output Created		05-DEC-2020 10:57:13
Comments		
Input	Data	D:\Office\SPSS\Data 2 Residen Perio.sav
	Active Dataset	DataSet39
	Filter	<none>
	Weight	<none>
	Split File	<none>
	N of Rows in Working Data File	24
Missing Value Handling	Definition of Missing	For each dependent variable in a table, user-defined missing values for the dependent and all grouping variables are treated as missing.
	Cases Used	Cases used for each table have no missing values in any independent variable, and not all dependent variables have missing values.
Syntax		MEANS TABLES=IL_6 MMP9

		BY Kelompok BY Pengamatan /CELLS=MEAN COUNT STDDEV.
Resources	Processor Time	00:00:00.03
	Elapsed Time	00:00:00.02

Case Processing Summary

	Included		Cases Excluded		Total	
	N	Percent	N	Percent	N	Percent
IL_6 * Kelompok * Pengamatan	24	100.0%	0	0.0%	24	100.0%
MMP9 * Kelompok * Pengamatan	24	100.0%	0	0.0%	24	100.0%

Report

Kelompok	Pengamatan		IL_6	MMP9
Kontrol	H3	Mean	5.6101	1.0135
		N	6	6
		Std. Deviation	.93443	.09921
	H7	Mean	6.1919	1.3062
		N	6	6
		Std. Deviation	.61665	.11943
	Total	Mean	5.9010	1.1598
		N	12	12
		Std. Deviation	.81367	.18525
Perlakuan	H3	Mean	5.9195	1.1423
		N	6	6
		Std. Deviation	.68622	.11091
	H7	Mean	6.8350	1.1247
		N	6	6
		Std. Deviation	.19608	.11154
	Total	Mean	6.3773	1.1335
		N	12	12
		Std. Deviation	.67830	.10645
Total	H3	Mean	5.7648	1.0779
		N	12	12

	Std. Deviation	.79815	.12078
H7	Mean	6.5135	1.2154
	N	12	12
	Std. Deviation	.55056	.14531
Total	Mean	6.1391	1.1467
	N	24	24
	Std. Deviation	.77192	.14837

```

EXAMINE VARIABLES=IL_6 MMP9 BY Kelompok
/PLOT BOXPLOT STEMLEAF NPLOT
/COMPARE GROUPS
/STATISTICS DESCRIPTIVES
/CINTERVAL 95
/MISSING LISTWISE
/NOTOTAL.

```

Explore

Notes

Output Created		05-DEC-2020 10:57:20
Comments		
Input	Data	D:\Office\SPSS\Data 2 Residen Perio.sav
	Active Dataset	DataSet39
	Filter	<none>
	Weight	<none>
	Split File	<none>
	N of Rows in Working Data File	24
Missing Value Handling	Definition of Missing	User-defined missing values for dependent variables are treated as missing.
	Cases Used	Statistics are based on cases with no missing values for any dependent variable or factor used.

Syntax	EXAMINE VARIABLES=IL_6 MMP9 BY Kelompok /PLOT BOXPLOT STEMLEAF NPLOT /COMPARE GROUPS /STATISTICS DESCRIPTIVES /CINTERVAL 95 /MISSING LISTWISE /NOTOTAL.	
Resources	Processor Time	00:00:04.22
	Elapsed Time	00:00:04.86

Kelompok

Case Processing Summary

	Kelompok	Valid		Cases Missing		Total	
		N	Percent	N	Percent	N	Percent
IL_6	Kontrol	12	100.0%	0	0.0%	12	100.0%
	Perlakuan	12	100.0%	0	0.0%	12	100.0%
MMP9	Kontrol	12	100.0%	0	0.0%	12	100.0%
	Perlakuan	12	100.0%	0	0.0%	12	100.0%

Descriptives

	Kelompok		Statistic	Std. Error
IL_6	Kontrol	Mean	5.9010	.23489
		95% Confidence Interval for	Lower Bound	5.3840
		Mean	Upper Bound	6.4180
		5% Trimmed Mean		5.9065
		Median		6.0800
		Variance		.662
		Std. Deviation		.81367
		Minimum		4.43

		Maximum	7.27	
		Range	2.84	
		Interquartile Range	1.18	
		Skewness	-.407	.637
		Kurtosis	-.146	1.232
	Perlakuan	Mean	6.3773	.19581
		95% Confidence Interval for	Lower Bound	5.9463
		Mean	Upper Bound	6.8082
		5% Trimmed Mean	6.4147	
		Median	6.6360	
		Variance	.460	
		Std. Deviation	.67830	
		Minimum	5.06	
		Maximum	7.03	
		Range	1.97	
		Interquartile Range	1.16	
		Skewness	-.857	.637
		Kurtosis	-.552	1.232
MMP9	Kontrol	Mean	1.1598	.05348
		95% Confidence Interval for	Lower Bound	1.0421
		Mean	Upper Bound	1.2775
		5% Trimmed Mean	1.1582	
		Median	1.1360	
		Variance	.034	
		Std. Deviation	.18525	
		Minimum	.87	
		Maximum	1.48	
		Range	.60	
		Interquartile Range	.31	
		Skewness	.139	.637
		Kurtosis	-.774	1.232
	Perlakuan	Mean	1.1335	.03073
		95% Confidence Interval for	Lower Bound	1.0659
		Mean	Upper Bound	1.2011
		5% Trimmed Mean	1.1343	
		Median	1.1356	
		Variance	.011	
		Std. Deviation	.10645	

Minimum	.94	
Maximum	1.31	
Range	.37	
Interquartile Range	.17	
Skewness	-.164	.637
Kurtosis	-.494	1.232

Tests of Normality

	Kelompok	Kolmogorov-Smirnov ^a			Shapiro-Wilk		
		Statistic	df	Sig.	Statistic	df	Sig.
IL_6	Kontrol	.247	12	.042	.946	12	.576
	Perlakuan	.236	12	.063	.867	12	.060
MMP9	Kontrol	.105	12	.200*	.975	12	.959
	Perlakuan	.082	12	.200*	.992	12	1.000

*. This is a lower bound of the true significance.

a. Lilliefors Significance Correction

```
USE ALL.
COMPUTE filter_$=(Kelompok = 1).
VARIABLE LABELS filter_$ 'Kelompok = 1 (FILTER)'.
VALUE LABELS filter_$ 0 'Not Selected' 1 'Selected'.
FORMATS filter_$ (f1.0).
FILTER BY filter_$.
EXECUTE.
T-TEST GROUPS=Pengamatan(1 2)
  /MISSING=ANALYSIS
  /VARIABLES=IL_6 MMP9
  /CRITERIA=CI(.95).
```

T-Test

Notes

Output Created	05-DEC-2020 10:58:01
Comments	
Input	Data D:\Office\SPSS\Data 2 Residen

		Perio.sav
	Active Dataset	DataSet39
	Filter	Kelompok = 1 (FILTER)
	Weight	<none>
	Split File	<none>
	N of Rows in Working Data File	12
Missing Value Handling	Definition of Missing	User defined missing values are treated as missing.
	Cases Used	Statistics for each analysis are based on the cases with no missing or out-of-range data for any variable in the analysis.
Syntax		T-TEST GROUPS=Pengamatan(1 2) /MISSING=ANALYSIS /VARIABLES=IL_6 MMP9 /CRITERIA=CI(.95).
Resources	Processor Time	00:00:00.03
	Elapsed Time	00:00:00.03

Group Statistics

	Pengamatan	N	Mean	Std. Deviation	Std. Error Mean
IL_6	H3	6	5.6101	.93443	.38148
	H7	6	6.1919	.61665	.25175
MMP9	H3	6	1.0135	.09921	.04050
	H7	6	1.3062	.11943	.04876

Independent Samples

		Levene's Test for Equality of Variances				
		F	Sig.	t	df	Sig.
IL_6	Equal variances assumed	3.454	.093	-1.273	10	
	Equal variances not assumed			-1.273	8.661	
MMP9	Equal variances assumed	.204	.661	-4.617	10	
	Equal variances not assumed			-4.617	9.675	

```

USE ALL.
COMPUTE filter_$=(Kelompok = 2).
VARIABLE LABELS filter_$ 'Kelompok = 2 (FILTER)'.
VALUE LABELS filter_$ 0 'Not Selected' 1 'Selected'.
FORMATS filter_$ (f1.0).
FILTER BY filter_$.
EXECUTE.
T-TEST GROUPS=Pengamatan(1 2)
  /MISSING=ANALYSIS
  /VARIABLES=IL_6 MMP9
  /CRITERIA=CI(.95).

```

T-Test

Notes		
Output Created		05-DEC-2020 10:58:15
Comments		
Input	Data	D:\Office\SPSS\Data 2 Residen Perio.sav
	Active Dataset	DataSet39
	Filter	Kelompok = 2 (FILTER)
	Weight	<none>
	Split File	<none>
	N of Rows in Working Data File	12
	Missing Value Handling	Definition of Missing
Cases Used		Statistics for each analysis are based on the cases with no missing or out-of-range data for any variable in the analysis.
Syntax	T-TEST GROUPS=Pengamatan(1 2) /MISSING=ANALYSIS /VARIABLES=IL_6 MMP9 /CRITERIA=CI(.95).	
Resources	Processor Time	00:00:00.03

Elapsed Time

00:00:00.04

Group Statistics

	Pengamatan	N	Mean	Std. Deviation	Std. Error Mean
IL_6	H3	6	5.9195	.68622	.28015
	H7	6	6.8350	.19608	.08005
MMP9	H3	6	1.1423	.11091	.04528
	H7	6	1.1247	.11154	.04554

Independent Samples

Levene's Test for Equality of Variances

		F	Sig.	t	df	S
IL_6	Equal variances assumed	6.080	.033	-3.142	10	
	Equal variances not assumed			-3.142	5.811	
MMP9	Equal variances assumed	.026	.874	.273	10	
	Equal variances not assumed			.273	10.000	

MEANS TABLES=IL_6 MMP9 BY Pengamatan BY Kelompok
/CELLS=MEAN COUNT STDDEV.

Means**Notes**

Output Created	05-DEC-2020 10:58:41	
Comments		
Input	Data	D:\Office\SPSS\Data 2 Residen Perio.sav
	Active Dataset	DataSet39
	Filter	<none>

	Weight	<none>
	Split File	<none>
	N of Rows in Working Data File	24
Missing Value Handling	Definition of Missing	For each dependent variable in a table, user-defined missing values for the dependent and all grouping variables are treated as missing.
	Cases Used	Cases used for each table have no missing values in any independent variable, and not all dependent variables have missing values.
Syntax		MEANS TABLES=IL_6 MMP9 BY Pengamatan BY Kelompok /CELLS=MEAN COUNT STDDEV.
Resources	Processor Time	00:00:00.03
	Elapsed Time	00:00:00.04

Case Processing Summary

	Included		Cases Excluded		Total	
	N	Percent	N	Percent	N	Percent
IL_6 * Pengamatan * Kelompok	24	100.0%	0	0.0%	24	100.0%
MMP9 * Pengamatan * Kelompok	24	100.0%	0	0.0%	24	100.0%

Report

Pengamatan	Kelompok		IL_6	MMP9
H3	Kontrol	Mean	5.6101	1.0135
		N	6	6
		Std. Deviation	.93443	.09921
	Perlakuan	Mean	5.9195	1.1423
		N	6	6
		Std. Deviation	.68622	.11091

	Total	Mean	5.7648	1.0779
		N	12	12
		Std. Deviation	.79815	.12078
H7	Kontrol	Mean	6.1919	1.3062
		N	6	6
		Std. Deviation	.61665	.11943
	Perlakuan	Mean	6.8350	1.1247
		N	6	6
		Std. Deviation	.19608	.11154
	Total	Mean	6.5135	1.2154
		N	12	12
		Std. Deviation	.55056	.14531
Total	Kontrol	Mean	5.9010	1.1598
		N	12	12
		Std. Deviation	.81367	.18525
	Perlakuan	Mean	6.3773	1.1335
		N	12	12
		Std. Deviation	.67830	.10645
	Total	Mean	6.1391	1.1467
		N	24	24
		Std. Deviation	.77192	.14837

```

EXAMINE VARIABLES=IL_6 MMP9 BY Pengamatan
/PLOT BOXPLOT STEMLEAF NPLOT
/COMPARE GROUPS
/STATISTICS DESCRIPTIVES
/CINTERVAL 95
/MISSING LISTWISE
/NOTOTAL.

```

Explore

Notes

Output Created

05-DEC-2020 10:58:46

Comments

Input	Data	D:\Office\SPSS\Data 2 Residen Perio.sav
	Active Dataset	DataSet39
	Filter	<none>
	Weight	<none>
	Split File	<none>
	N of Rows in Working Data File	24
Missing Value Handling	Definition of Missing	User-defined missing values for dependent variables are treated as missing.
	Cases Used	Statistics are based on cases with no missing values for any dependent variable or factor used.
Syntax		EXAMINE VARIABLES=IL_6 MMP9 BY Pengamatan /PLOT BOXPLOT STEMLEAF NPLOT /COMPARE GROUPS /STATISTICS DESCRIPTIVES /CINTERVAL 95 /MISSING LISTWISE /NOTOTAL.
Resources	Processor Time	00:00:04.16
	Elapsed Time	00:00:04.67

Pengamatan

Case Processing Summary

	Pengamatan	Valid		Cases Missing		Total	
		N	Percent	N	Percent	N	Percent
IL_6	H3	12	100.0%	0	0.0%	12	100.0%
	H7	12	100.0%	0	0.0%	12	100.0%
MMP9	H3	12	100.0%	0	0.0%	12	100.0%

H7	12	100.0%	0	0.0%	12	100.0%
----	----	--------	---	------	----	--------

Descriptives

		Pengamatan	Statistic	Std. Error	
IL_6	H3	Mean	5.7648	.23041	
		95% Confidence Interval for	Lower Bound	5.2577	
		Mean	Upper Bound	6.2719	
		5% Trimmed Mean		5.7699	
		Median		5.8830	
		Variance		.637	
		Std. Deviation		.79815	
		Minimum		4.43	
		Maximum		7.01	
		Range		2.58	
		Interquartile Range		1.35	
		Skewness		-.199	.637
		Kurtosis		-.944	1.232
		H7	H7	Mean	6.5135
95% Confidence Interval for	Lower Bound			6.1637	
Mean	Upper Bound			6.8633	
5% Trimmed Mean				6.5352	
Median				6.6360	
Variance				.303	
Std. Deviation				.55056	
Minimum				5.36	
Maximum				7.27	
Range				1.91	
Interquartile Range				.86	
Skewness				-.654	.637
Kurtosis				-.027	1.232
MMP9	H3			Mean	1.0779
		95% Confidence Interval for	Lower Bound	1.0011	
		Mean	Upper Bound	1.1546	
		5% Trimmed Mean		1.0763	
		Median		1.0755	
		Variance		.015	
		Std. Deviation		.12078	

	Minimum		.87	
	Maximum		1.31	
	Range		.44	
	Interquartile Range		.15	
	Skewness		.140	.637
	Kurtosis		.193	1.232
H7	Mean		1.2154	.04195
	95% Confidence Interval for	Lower Bound	1.1231	
	Mean	Upper Bound	1.3078	
	5% Trimmed Mean		1.2162	
	Median		1.2110	
	Variance		.021	
	Std. Deviation		.14531	
	Minimum		.94	
	Maximum		1.48	
	Range		.53	
	Interquartile Range		.21	
	Skewness		-.028	.637
	Kurtosis		.114	1.232

Tests of Normality

	Pengamatan	Kolmogorov-Smirnov ^a			Shapiro-Wilk		
		Statistic	df	Sig.	Statistic	df	Sig.
IL_6	H3	.155	12	.200 [*]	.971	12	.921
	H7	.202	12	.188	.931	12	.393
MMP9	H3	.116	12	.200 [*]	.985	12	.997
	H7	.090	12	.200 [*]	.993	12	1.000

*. This is a lower bound of the true significance.

a. Lilliefors Significance Correction

```

USE ALL.
COMPUTE filter_$=(Pengamatan = 1).
VARIABLE LABELS filter_$ 'Pengamatan = 1 (FILTER)'.
VALUE LABELS filter_$ 0 'Not Selected' 1 'Selected'.
FORMATS filter_$ (f1.0).
FILTER BY filter_$.
EXECUTE.
T-TEST GROUPS=Kelompok(1 2)
  /MISSING=ANALYSIS

```

```

/VARIABLES=IL_6 MMP9
/CRITERIA=CI (.95) .

```

T-Test

Notes

Output Created		05-DEC-2020 10:59:14
Comments		
Input	Data	D:\Office\SPSS\Data 2 Residen Perio.sav
	Active Dataset	DataSet39
	Filter	Pengamatan = 1 (FILTER)
	Weight	<none>
	Split File	<none>
	N of Rows in Working Data File	12
Missing Value Handling	Definition of Missing	User defined missing values are treated as missing.
	Cases Used	Statistics for each analysis are based on the cases with no missing or out-of-range data for any variable in the analysis.
Syntax		T-TEST GROUPS=Kelompok(1 2) /MISSING=ANALYSIS /VARIABLES=IL_6 MMP9 /CRITERIA=CI(.95).
Resources	Processor Time	00:00:00.03
	Elapsed Time	00:00:00.02

Group Statistics

	Kelompok	N	Mean	Std. Deviation	Std. Error Mean
IL_6	Kontrol	6	5.6101	.93443	.38148
	Perlakuan	6	5.9195	.68622	.28015

MMP9	Kontrol	6	1.0135	.09921	.04050
	Perlakuan	6	1.1423	.11091	.04528

Independent Samples

		Levene's Test for Equality of Variances				
		F	Sig.	t	df	Sig.
IL_6	Equal variances assumed	1.945	.193	-.654	10	
	Equal variances not assumed			-.654	9.178	
MMP9	Equal variances assumed	.089	.771	-2.120	10	
	Equal variances not assumed			-2.120	9.878	

```

USE ALL.
COMPUTE filter_$=(Pengamatan = 2).
VARIABLE LABELS filter_$ 'Pengamatan = 2 (FILTER)'.
VALUE LABELS filter_$ 0 'Not Selected' 1 'Selected'.
FORMATS filter_$ (f1.0).
FILTER BY filter_$.
EXECUTE.
T-TEST GROUPS=Kelompok(1 2)
  /MISSING=ANALYSIS
  /VARIABLES=IL_6 MMP9
  /CRITERIA=CI(.95).

```

T-Test

Notes

Output Created	05-DEC-2020 10:59:28	
Comments		
Input	Data	D:\Office\SPSS\Data 2 Residen Perio.sav
	Active Dataset	DataSet39
	Filter	Pengamatan = 2 (FILTER)
	Weight	<none>

	Split File	<none>
	N of Rows in Working Data File	12
Missing Value Handling	Definition of Missing	User defined missing values are treated as missing.
	Cases Used	Statistics for each analysis are based on the cases with no missing or out-of-range data for any variable in the analysis.
Syntax		T-TEST GROUPS=Kelompok(1 2) /MISSING=ANALYSIS /VARIABLES=IL_6 MMP9 /CRITERIA=CI(.95).
Resources	Processor Time	00:00:00.03
	Elapsed Time	00:00:00.03

Group Statistics

	Kelompok	N	Mean	Std. Deviation	Std. Error Mean
IL_6	Kontrol	6	6.1919	.61665	.25175
	Perlakuan	6	6.8350	.19608	.08005
MMP9	Kontrol	6	1.3062	.11943	.04876
	Perlakuan	6	1.1247	.11154	.04554

Independent Samples

		Levene's Test for Equality of Variances				
		F	Sig.	t	df	Sig.
IL_6	Equal variances assumed	1.907	.197	-2.434	10	
	Equal variances not assumed			-2.434	6.001	
MMP9	Equal variances assumed	.093	.767	2.719	10	
	Equal variances not assumed			2.719	9.954	