

dengan hasil interpretasi *geophysical well logging* agar tingkat kepercayaan hasil interpretasinya semakin tinggi.

## DAFTAR PUSTAKA

- Adrian, D. Dewanto, O. dan Mulyatno, B. S. 2010. Identifikasi dan Estimasi Sumberdaya Batubara Menggunakan Metode Poligon Berdasarkan Interpretasi Data *Logging* pada Lapangan ADA, Sumatera Selatan. *Jurnal Geofisika Eksplorasi* Vol.4/No 1.
- Ardhityasari, D. F. 2017. Analisis Data Proksimat dan Perhitungan Volume Batubara Berdasarkan Data *log* densitas dan *Gamma Ray* dari Lapangan TG. Institut Teknologi Sepuluh November. Surabaya.
- Belkin, H., E., Tewalt, S., J., Hower, J., C., Stucker, J., D., and O'keefe, J., M., K., 2009. Geochemistry and Petrology of Selected Coal Samples from Sumatera, Kalimantan, Sulawesi, and Papua, Indonesia. *Internasional Journal of Coal Geology*, vol.77, p. 260-268.
- BPB Manual. 1981. *Brithish Petroleum Book*. British Company. United Kingdom.
- Cook, A. C. 1982. *The Origin and Petrology Of Organic Matter in Coals, Oil Shales, and Petroleum Source-Rock*. Australia: *Geology Departement Of Wollongngong University*.
- Darjianto, T., 1999. *Estimasi Cadangan Mineral*, Direktorat Jenderal Pertambangan Umum Pusat Pengembangan Tenaga Pertambangan, Bandung.
- Darmadi. 2015. Analisis Data *Well Logging* untuk Rekonstruksi Lingkungan Pengendapan Daerah Pangandoan, Sumatera Selatan. Universitas Lampung. Bandar Lampung.
- Dewanto, O. 2009. *Well Logging*, Vol-6. Universitas Lampung.
- Djumhani, Diklat Well Logging Batubara Pengantar Eksplorasi Batubara, Bidang Tenaga Teknik Geologi, Departemen Pertambangan dan Energi, Direktorat Jenderal Pertambangan Umum, Pusat Pengembangan Tenaga Pertambangan, Bandung, 1998.
- Reeves, *Coal Interpretation Manual*. BPB Instruments Limited, England, 1986.
- Ellis, D. V. and Singer, J. M. 1987. *Well Logging for Earth Scientist 2<sup>nd</sup> edition*. Springer. Netherlands.
- Harsono, A. 1997. Pengantar Evaluasi *Log*. Jakarta.
- Iswati, Y. 2012. Analisis *Core* dan Defleksi *Log* untuk Mengetahui Lingkungan Pengendapan dan Menentukan Cadangan Batubara di Banko Barat *Pit 1*, Sumatera Selatan. Universitas Lampung.

- Jelonek, I., Kruszewska, K., J., and Filipiak, P., 2007. Liptinite as an Indicator of Environmental Changes during Formation of Coal Seam no.207 (Upper Silesia, Poland). *International Journal of Coal Geology*, vol.71, p.471-487.
- Julkipli, Siregar, S. S., And Sota, I. 2015. Intepretasi Sebaran Batubara Berdasarkan Data Well Logging Di Daerah Blok X Pulau Laut Tengah Kabupaten Kotabaru. *Jurnal Fisika Flux*, Vol. 12 No. 1. Universitas Lambung Mangkurat: Program Studi Fisika MIPA
- Kadarisman, S.D., 1999. *Geologi Batubara*, Jurusan Teknik Geologi Fakultas Teknik Universitas Pakuan, Bogor
- Koesoemadinata, R. P. 1978. *Tertiary Coal Basin of Indonesia*. United NationESCAP, CCOP Technical bulletin. Bandung.
- PT Kitadin. 2015. *Laporan Eksplorasi Tahun 2016 No. Dokumen KW.KTN 2015 006 OP*, PT Kitadin *Site Embalut*.
- PT Kitadin, 2016. *SOP Interpretasi Wellcad*, No. Dokumen KTD.IK.GGS.10 Tahun 2016. PT Kitadin *Site Embalut*.
- Rider, M. H. 2002. *The Geophysical Interpretation of Well Logs*. New York.
- Setiahadiwibowo, A. P., 2017, Analisis Karakteristik Batubara Berdasarkan Rekaman *Well Logging* Di Daerah Kabupaten Katingan Kalimantan Tengah, Jurnal teknik geofisika, Vol.1.1. No. 2, November 2016, pp. 81-87.
- Stefanko, R., 1983. *Coal Mining Technology, Theory And Practice*, Society Of Mining Engineering Of The American Institute Of Mining, Metallurgical, And Petroleum Engineers, Inc., New York.
- Sundoyono, 2014. Perhitungan Sumberdaya Batubara Berdasarkan Usgs *Circular*, Jurnal Geologi Pertambangan, Volume 1 No. 14 Februari 2014.
- Sukandarrumidi, 2005. *Batubara dan Pemanfaatannya*, Gajah Mada Universitas Press, Yogyakarta.
- Thomas, L., 2002. *Coal Geology*, Chichester, England.
- Hynes, M. 2007. *Batuan dan Fosil*. Seri Pengetahuan. Penerbit Erlangga, Jakarta.
- McNeil, J.D., Hunter, J.A. and Bosnar, M., 1996. Application of a Borehole Induction Magnetic Susceptibility Logger To Shallow Lithology Mapping. *Journal of Environmental and Engineering Geophysics 2: 77-90*.
- Moon, B., S., 200. A Design of Thickness Gauge Using The Compton Gamma Ray Backcattering, Korea Atomic Energy Research Institute. *Journal of The Korean Nuclear Society*. Vol.2 No.5. p.457-458.

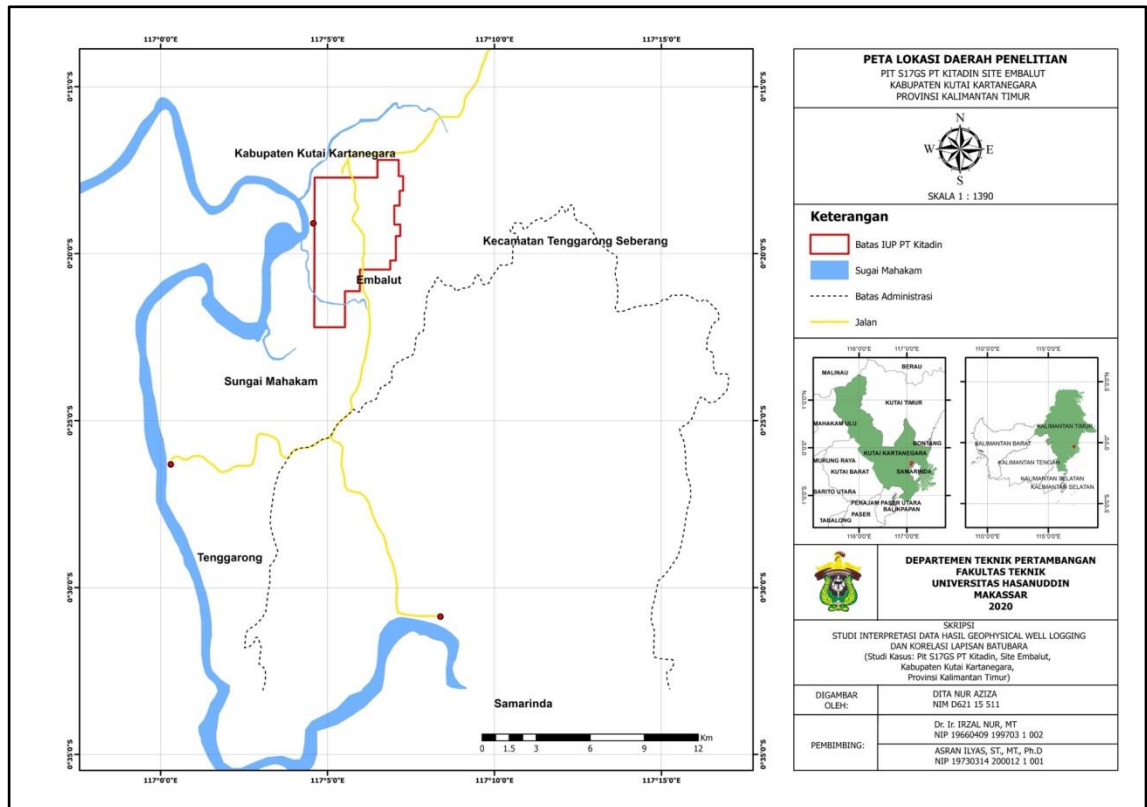
Moore, T., A., and Shearer, J., C., 2003. Peat/coal type and depositional environment-are they related. *International Journal of Coal Geology*, vol. 12, no.3, p.111-117.

Muchjidin, 2005. *Pengendalian Mutu Dalam Industri Batubara*. Penerbit ITB, Bandung.

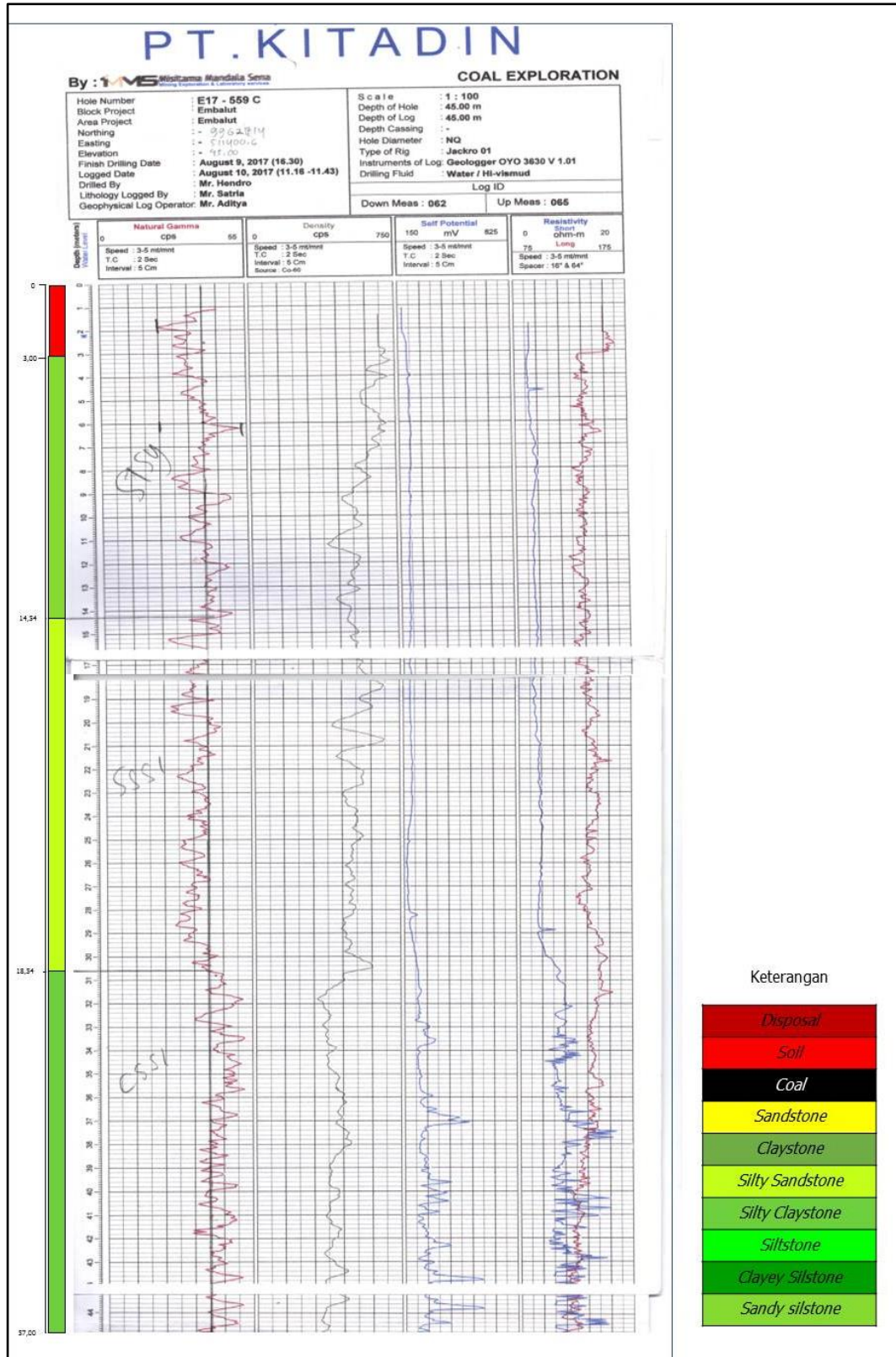
Wood, G.H., Kehn, T.M., Carter, M. D., And Culbertson, W. C., 1983. *Coal Resources Classification System Of The U.S Geological Survey*, Geological Survey Eastern Publications Group.

# LAMPIRAN

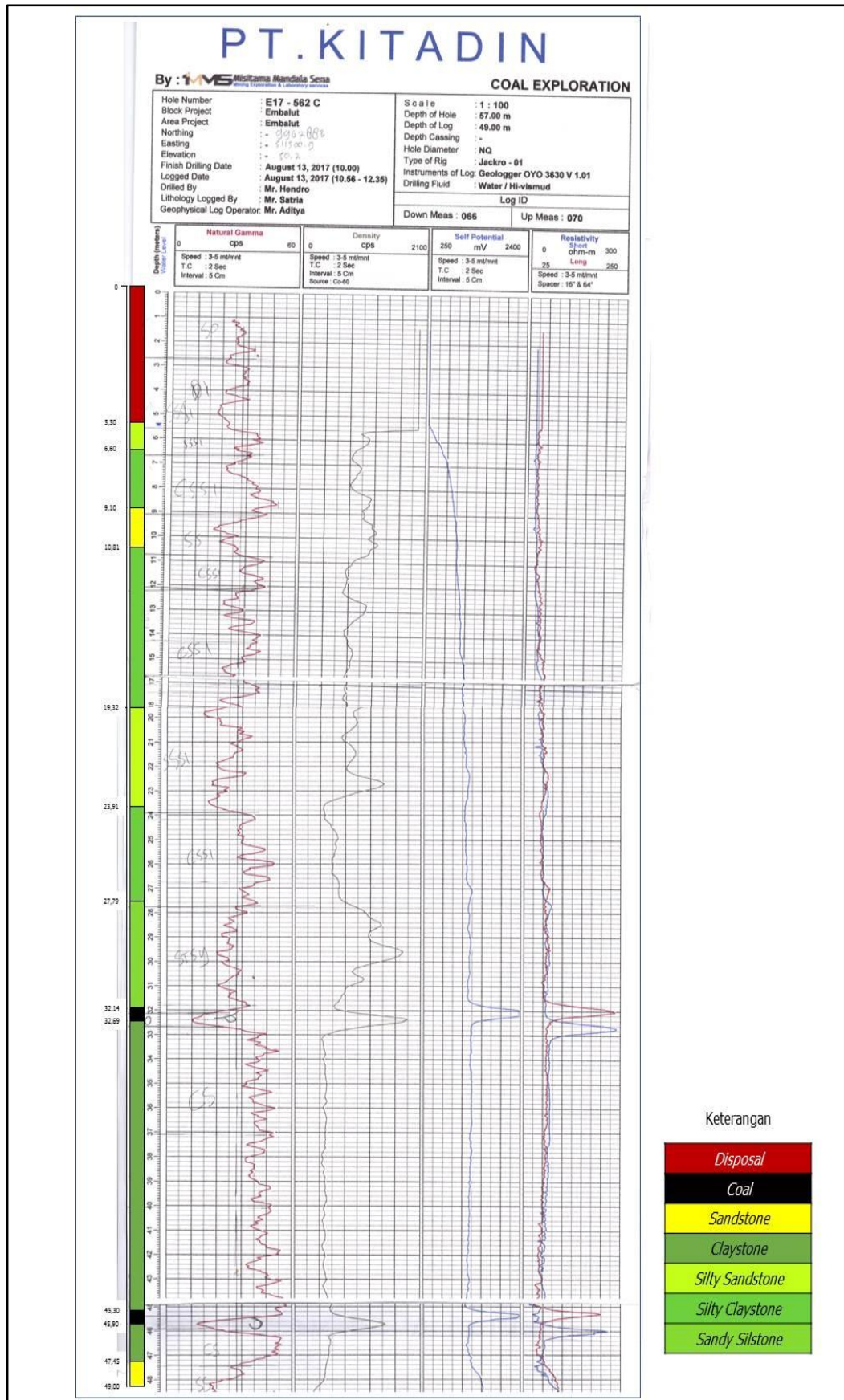
## 1.1 Peta Lokasi dan Kesampaian Daerah



## 2.1 Interpretasi Titik Bor E17\_559C

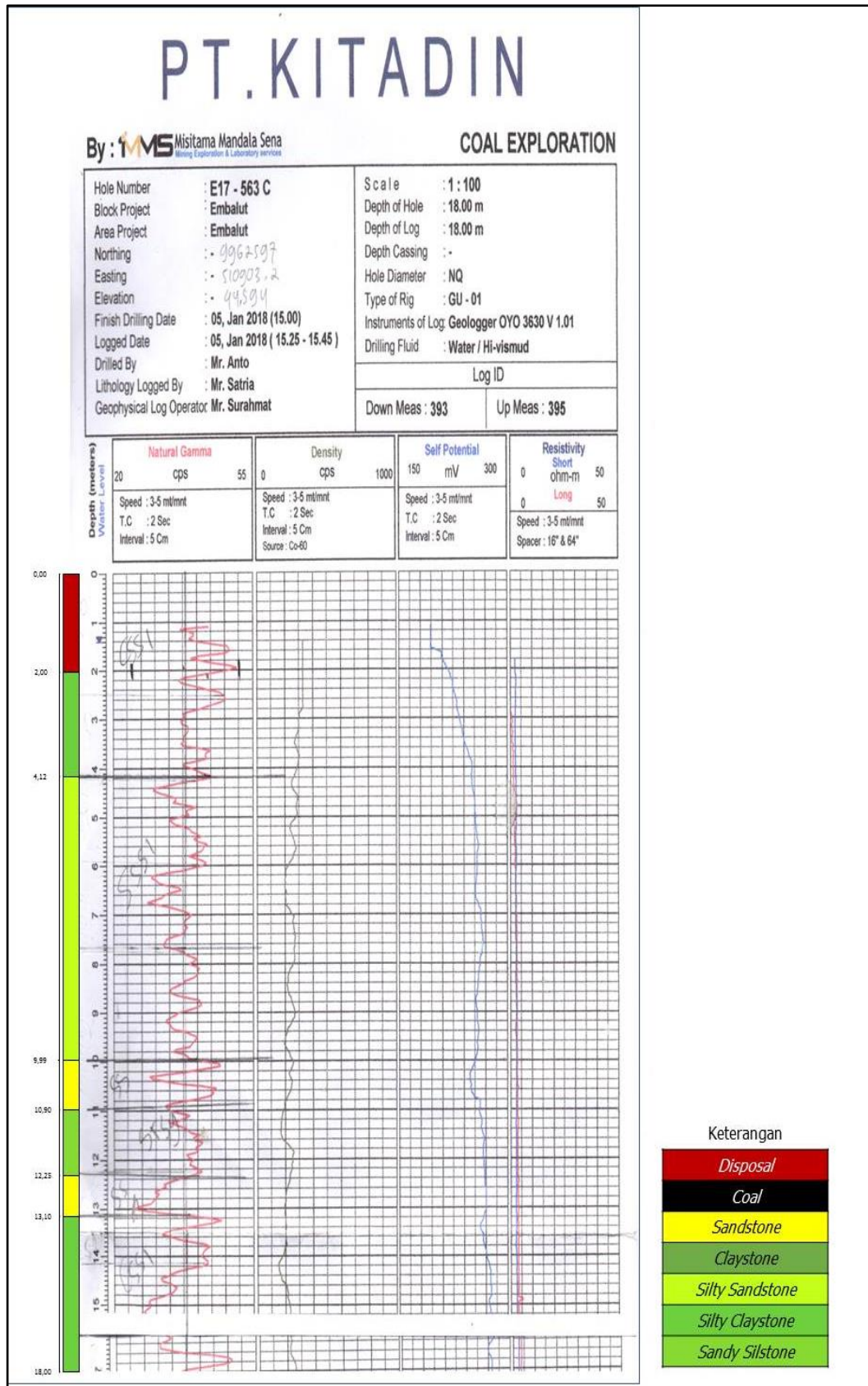


## 2.2 Interpretasi Titik Bor E17\_562C

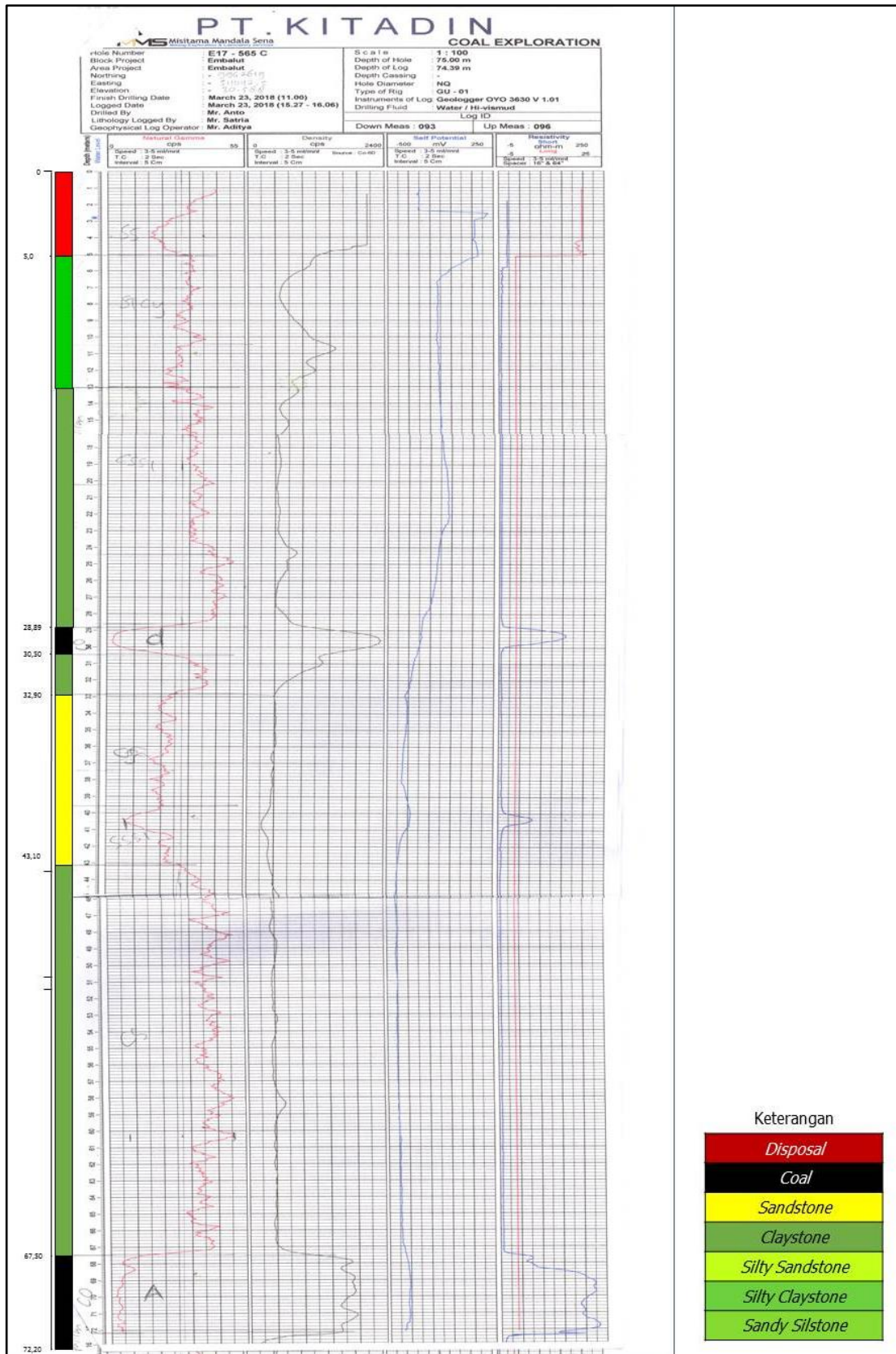




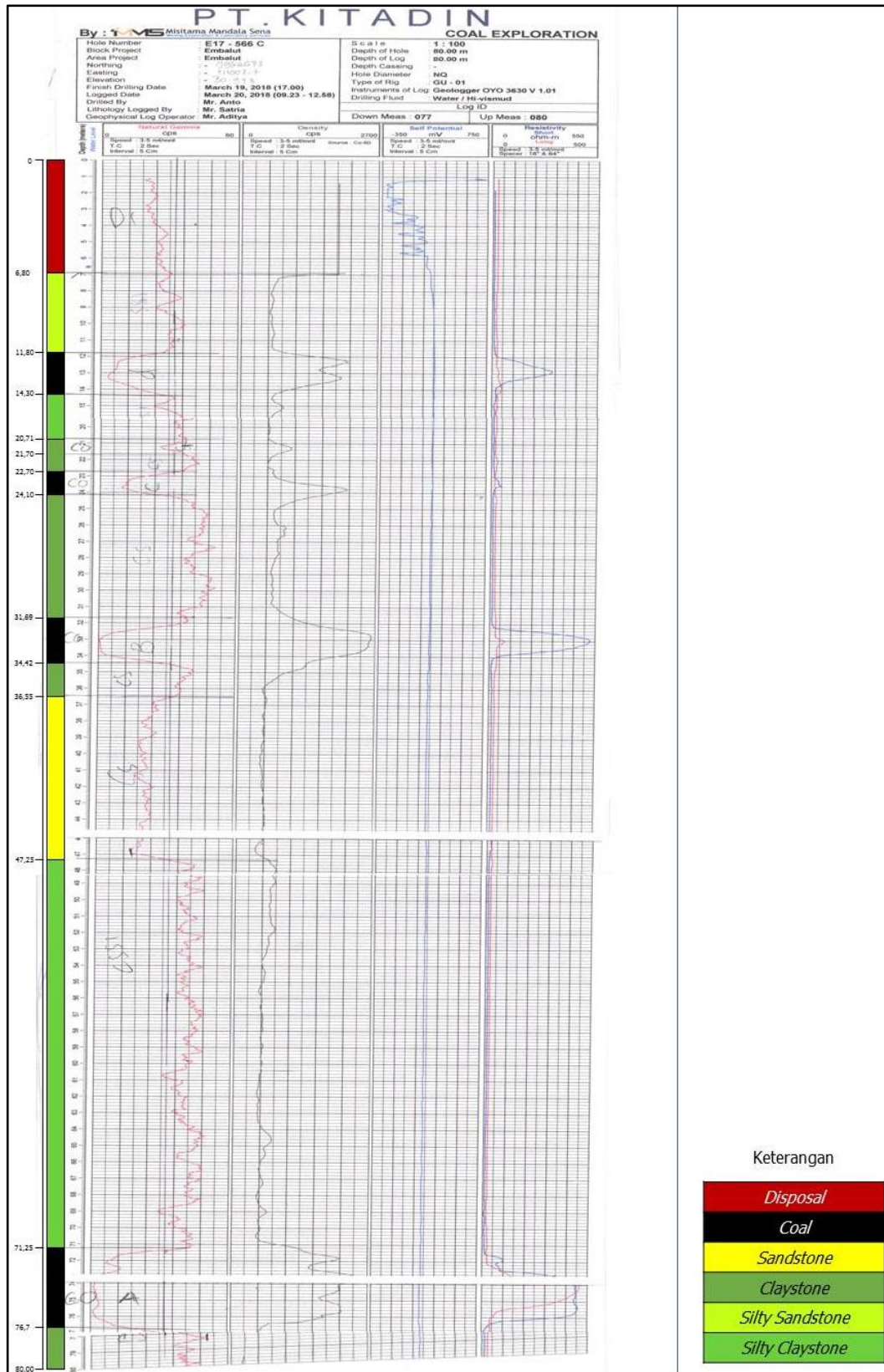
### 2.3 Lampiran Interpretasi Titik Bor E17\_563C



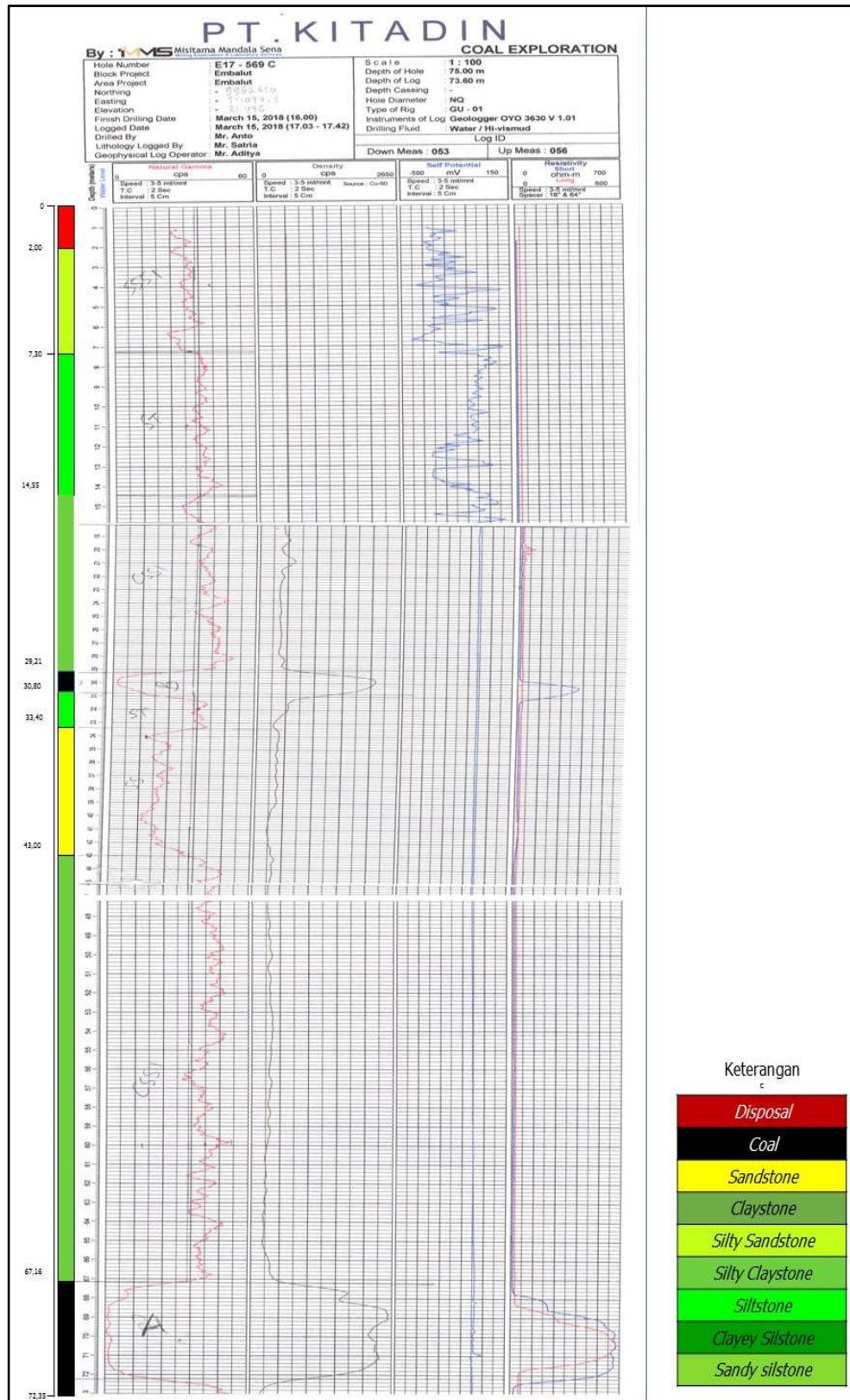
## 2.4 Lampiran Interpretasi Titik Bor E17\_565C



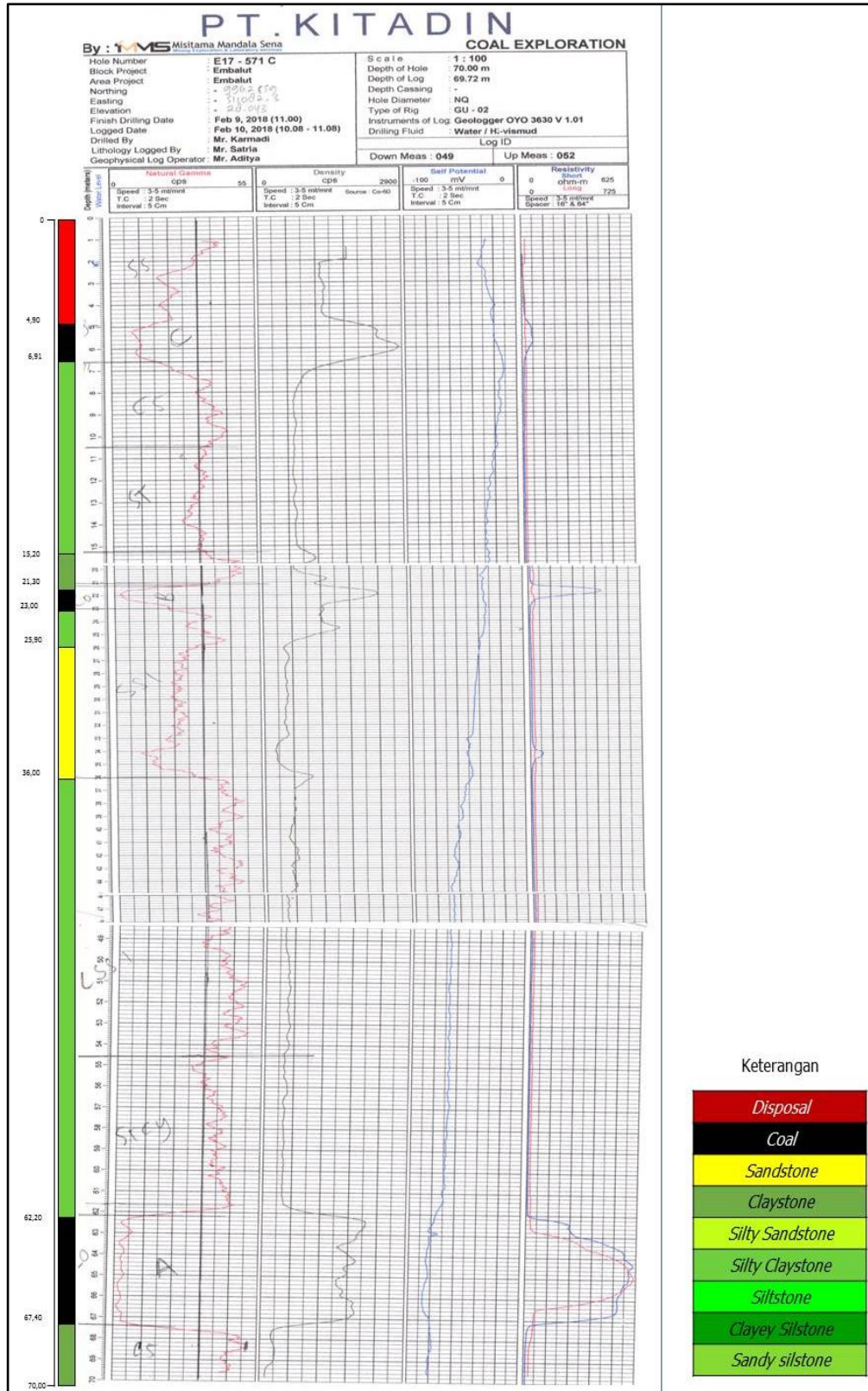
## 2.5 Lampiran Interpretasi Titik Bor E17\_566C



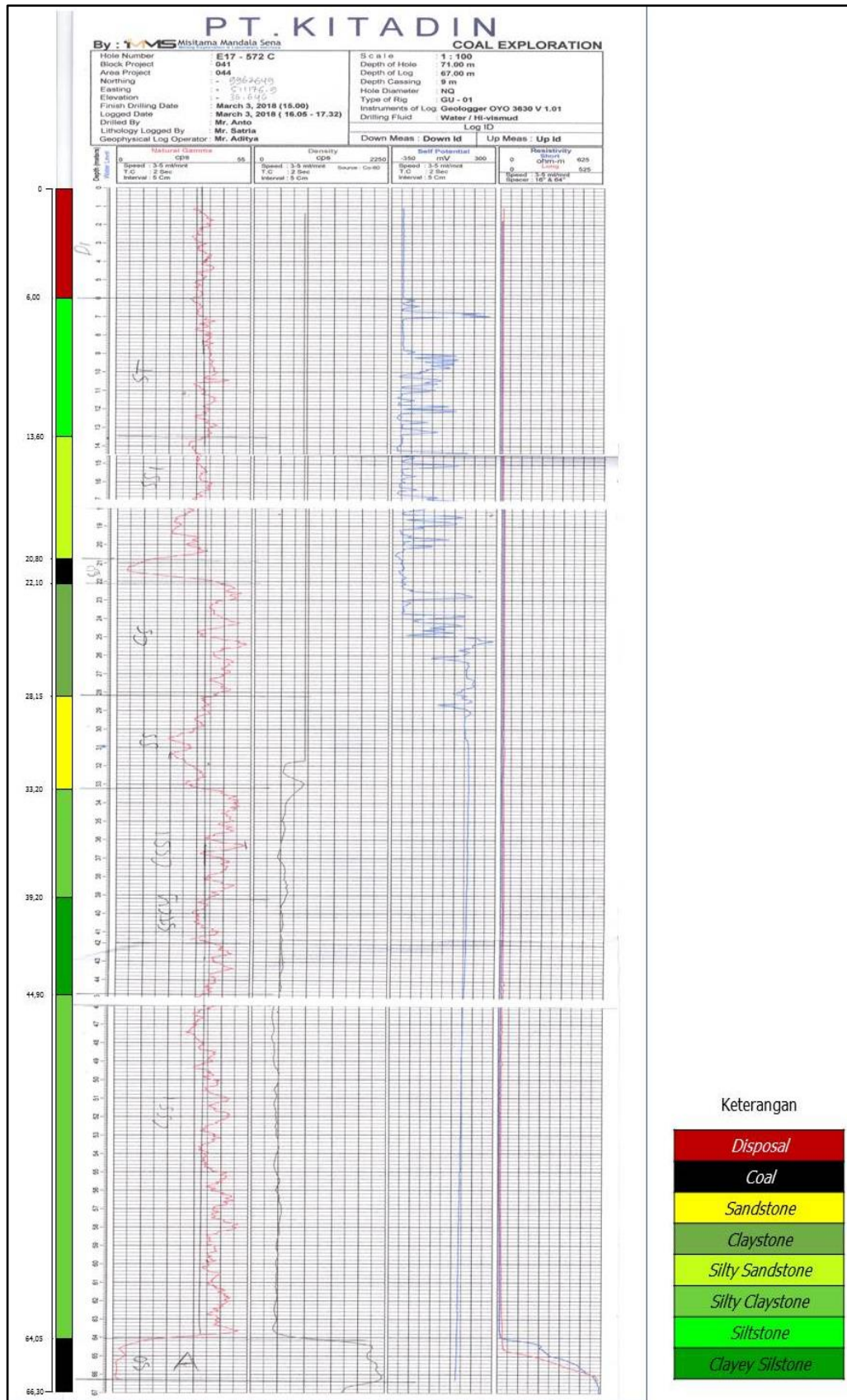
## 2.6 Interpretasi Titik Bor E17\_569C



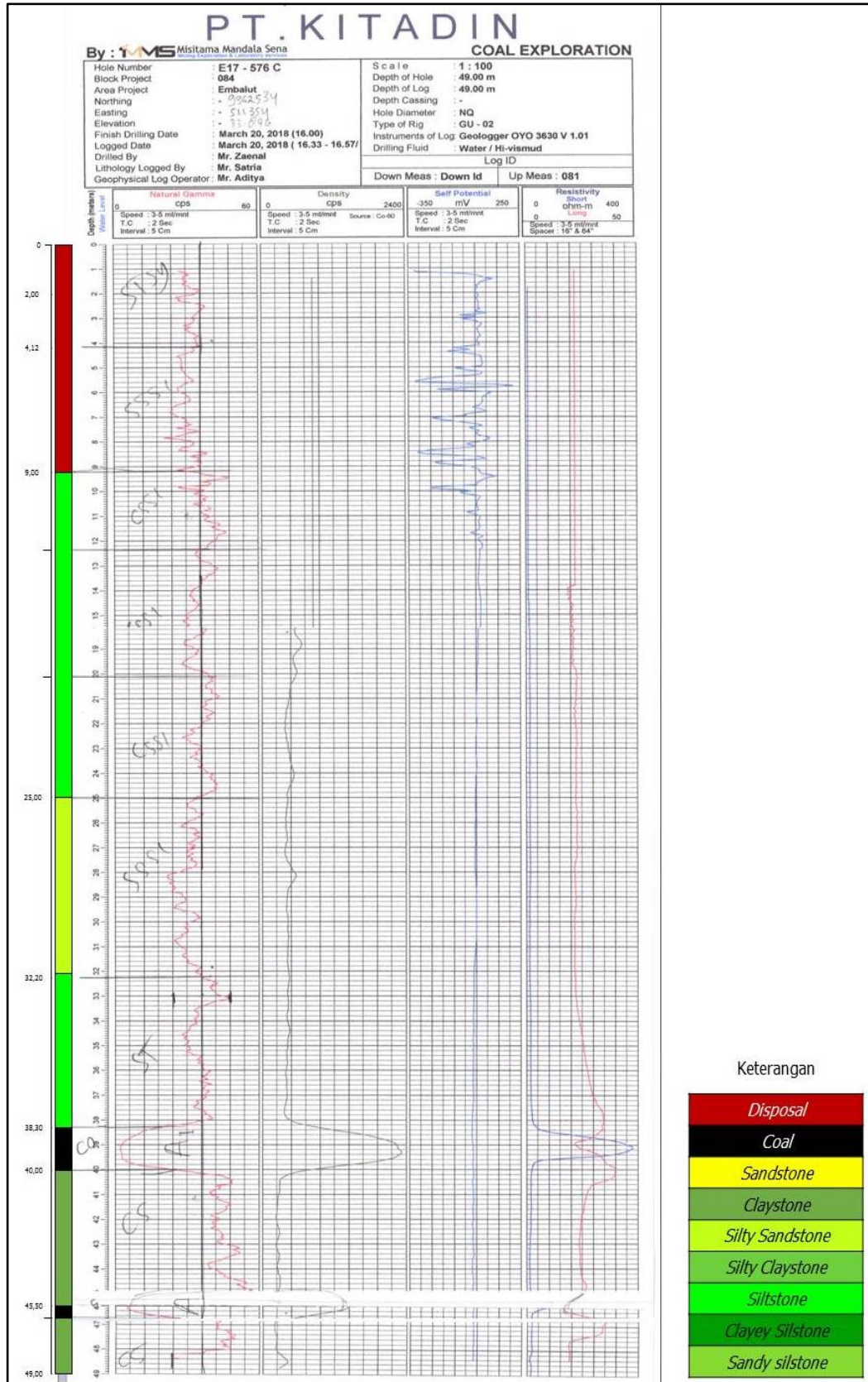
## 2.7 Interpretasi Titik Bor E17\_571C



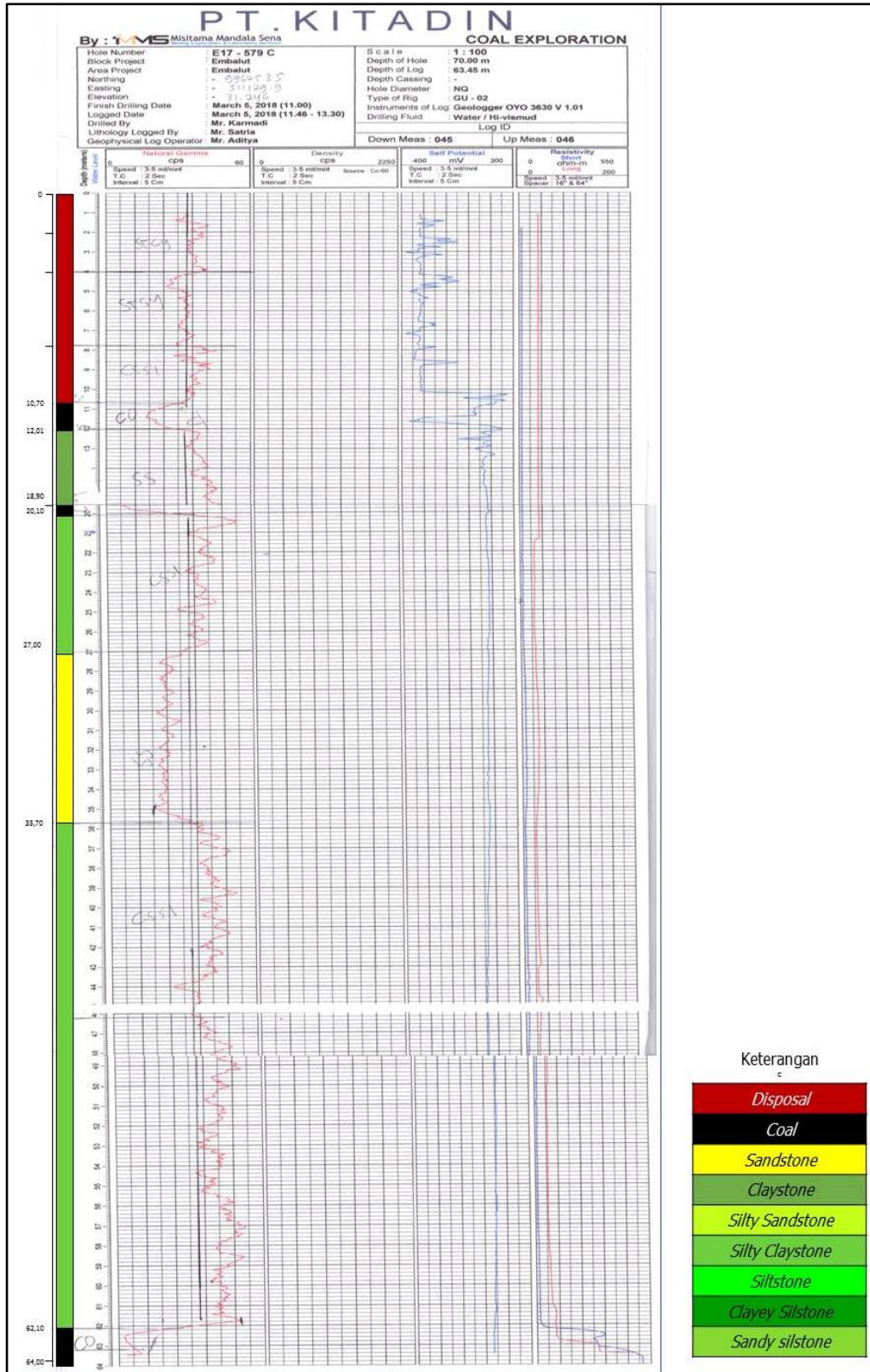
## 2.8 Interpretasi Titik Bor E17\_572C



## 2.9 Interpretasi Titik Bor E17\_576C

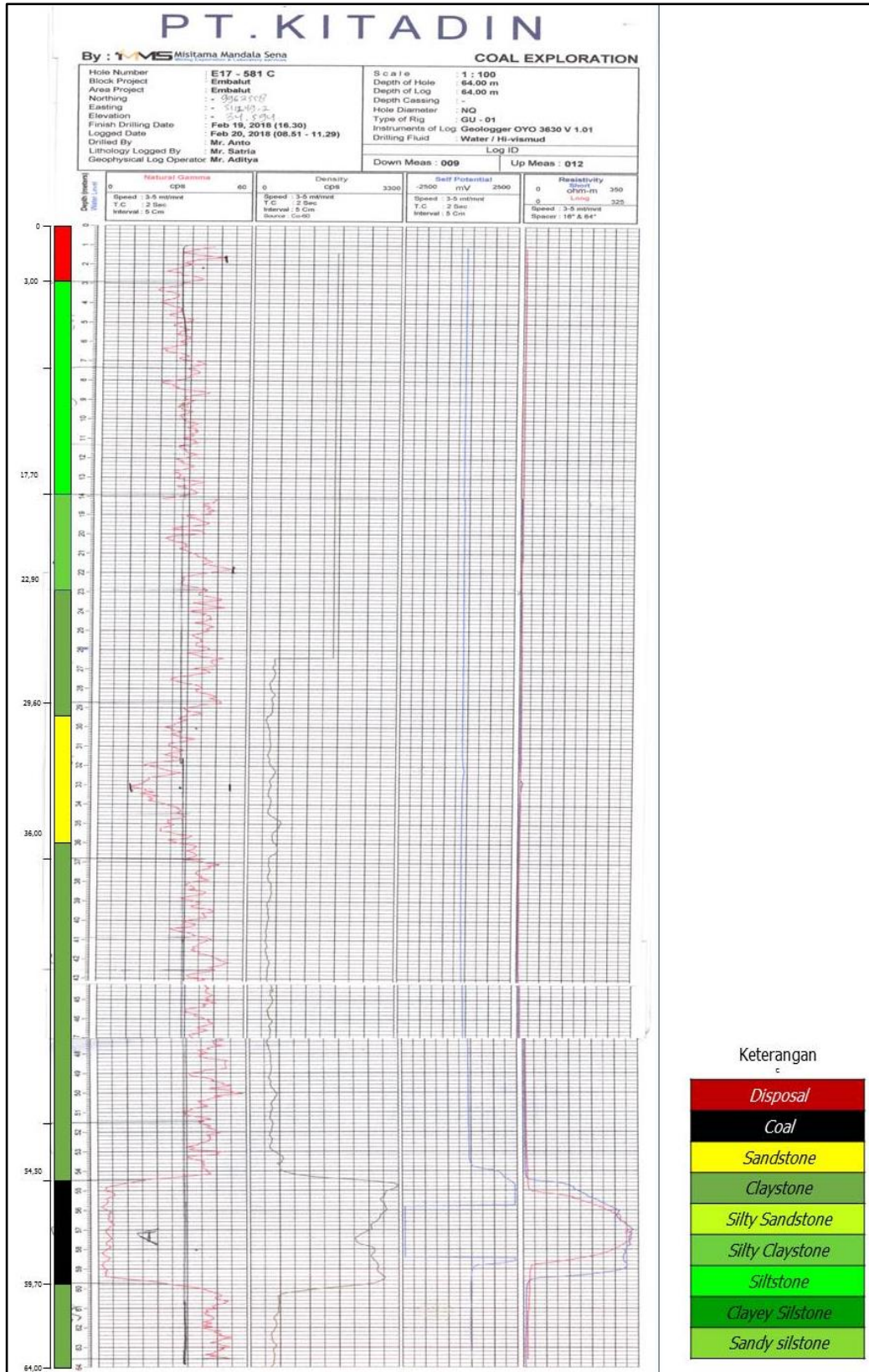


## 2.10 Interpretasi Titik Bor E17\_579C

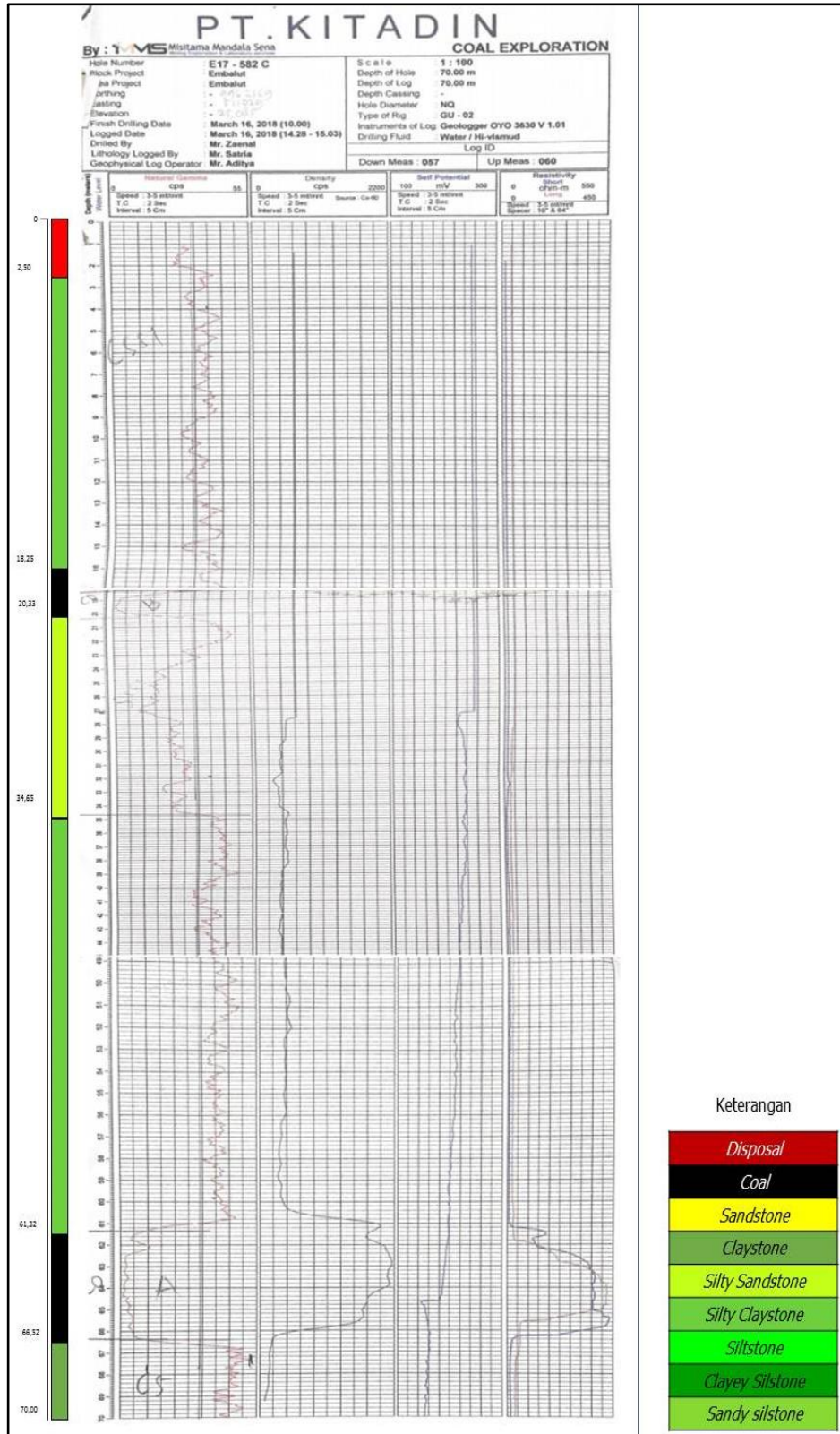




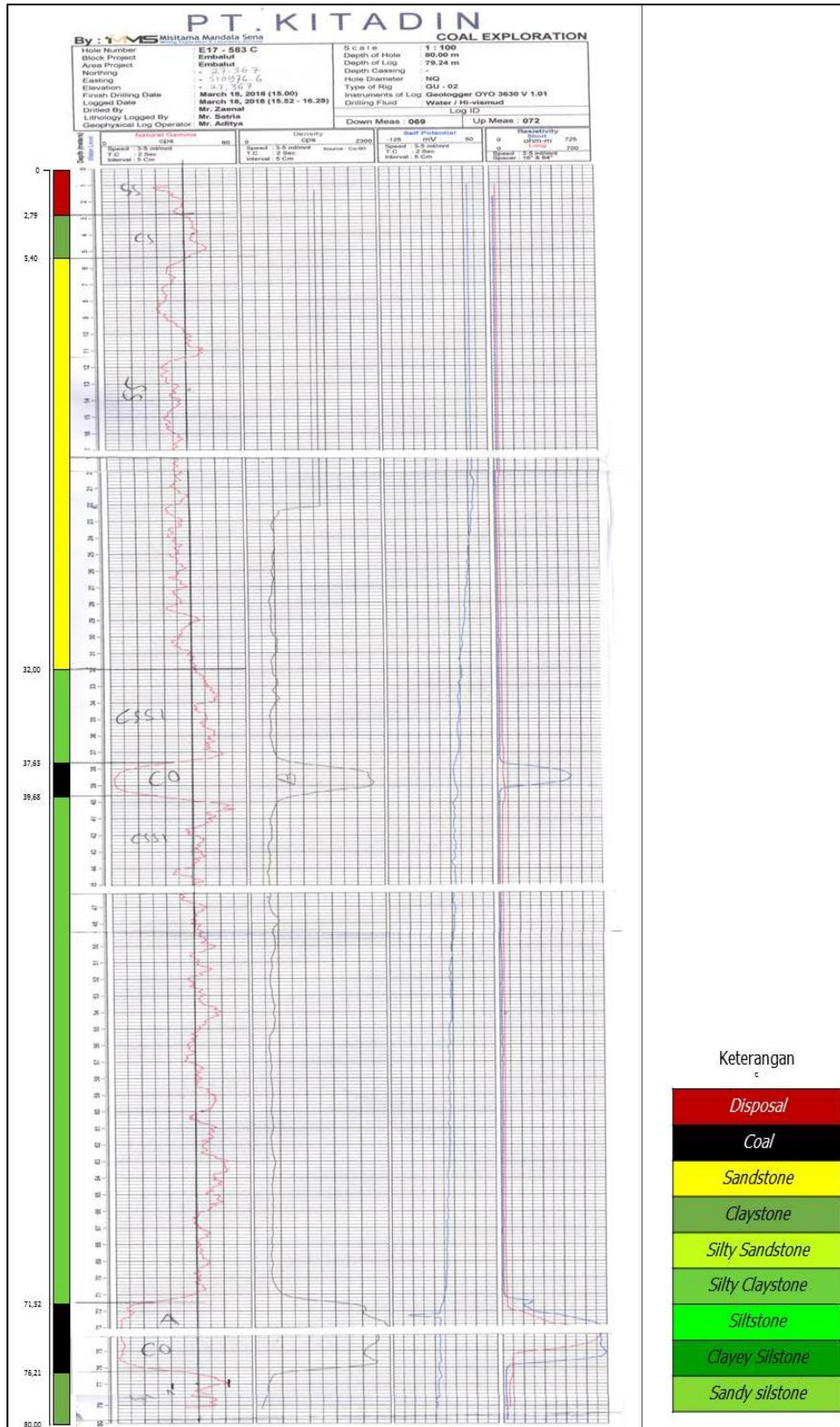
## 2.11 Interpretasi Titik Bor E17\_581C



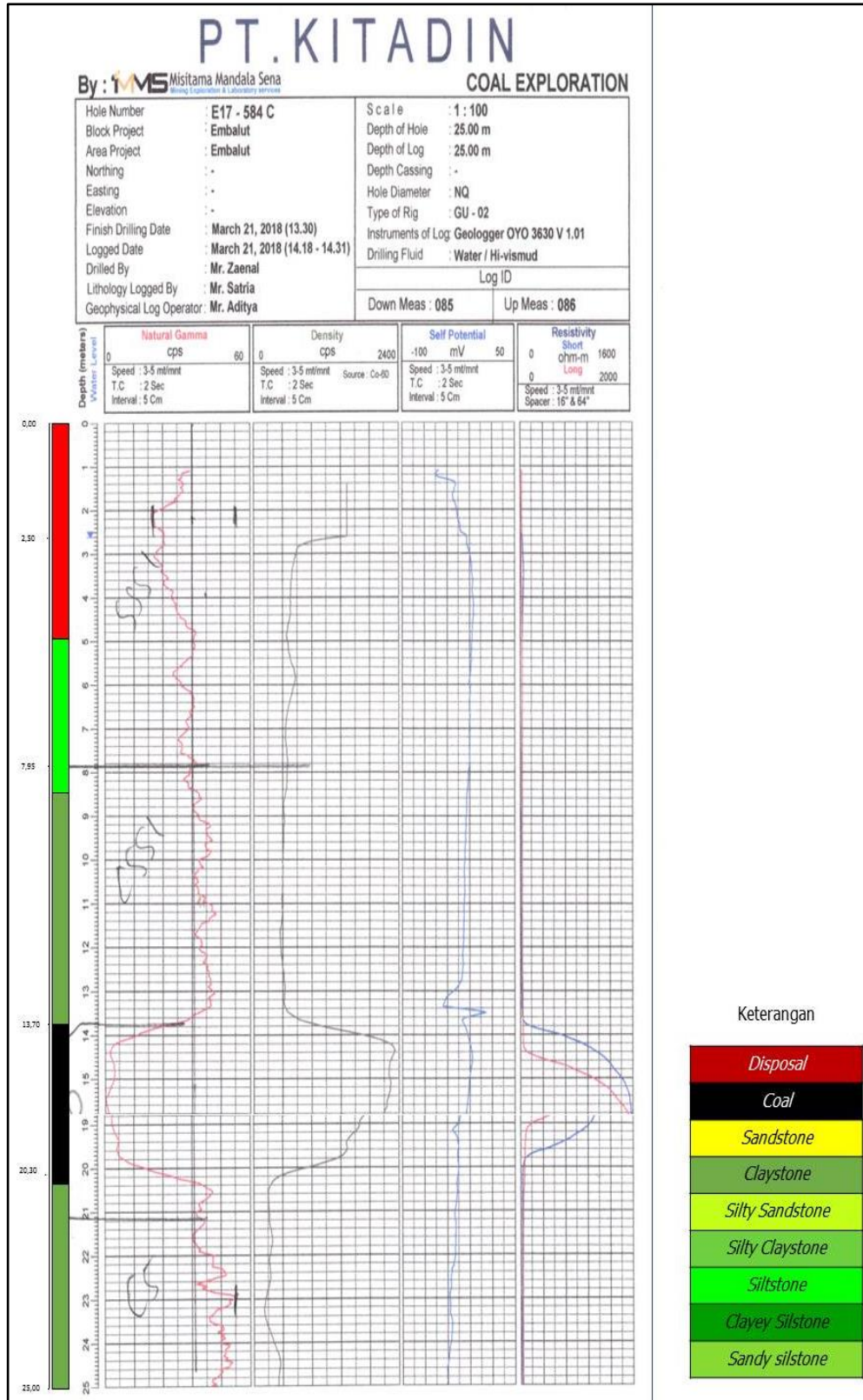
## 2.12 Interpretasi Titik Bor E17\_582C



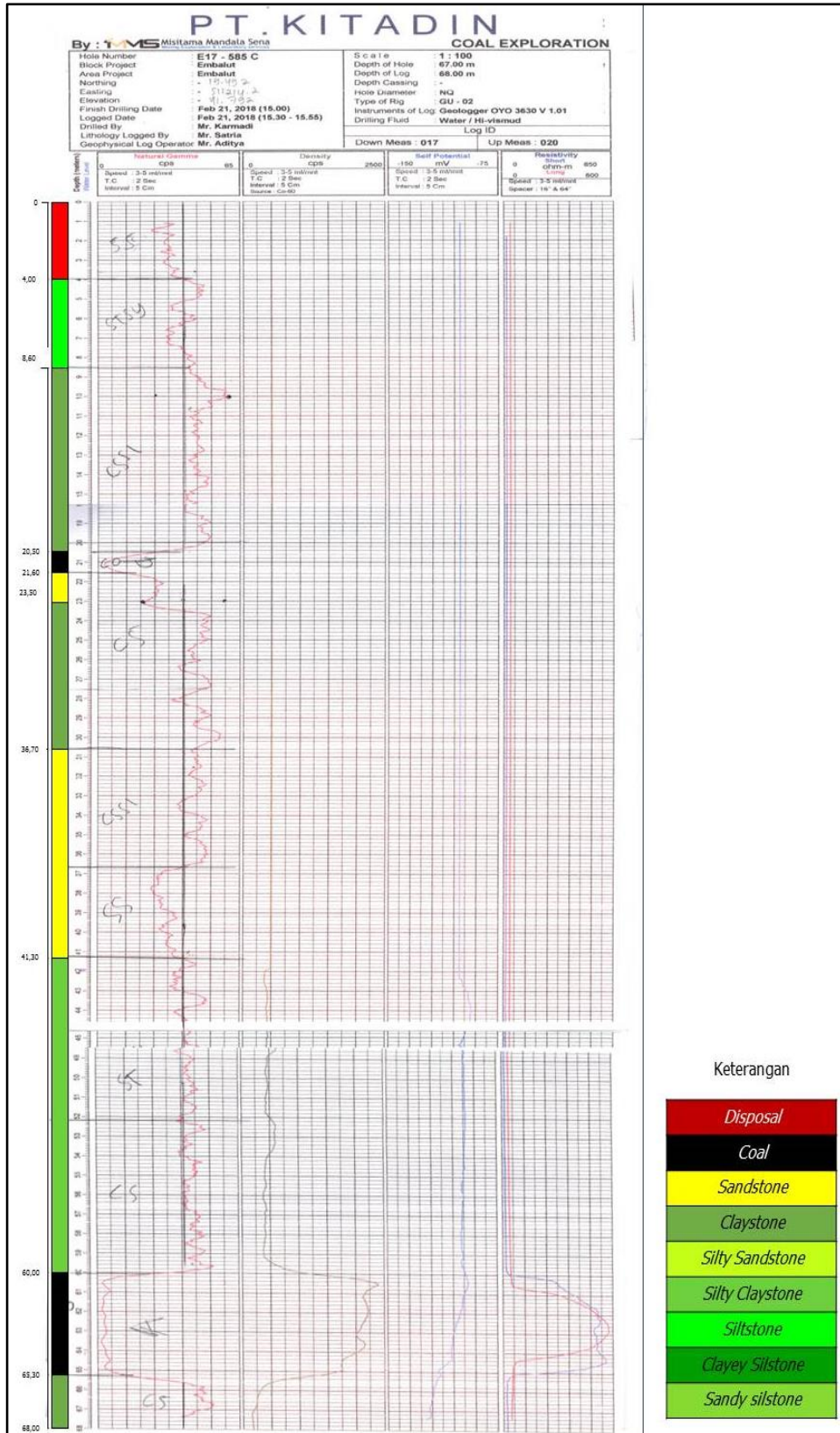
## 2.13 Interpretasi Titik Bor E17\_583C



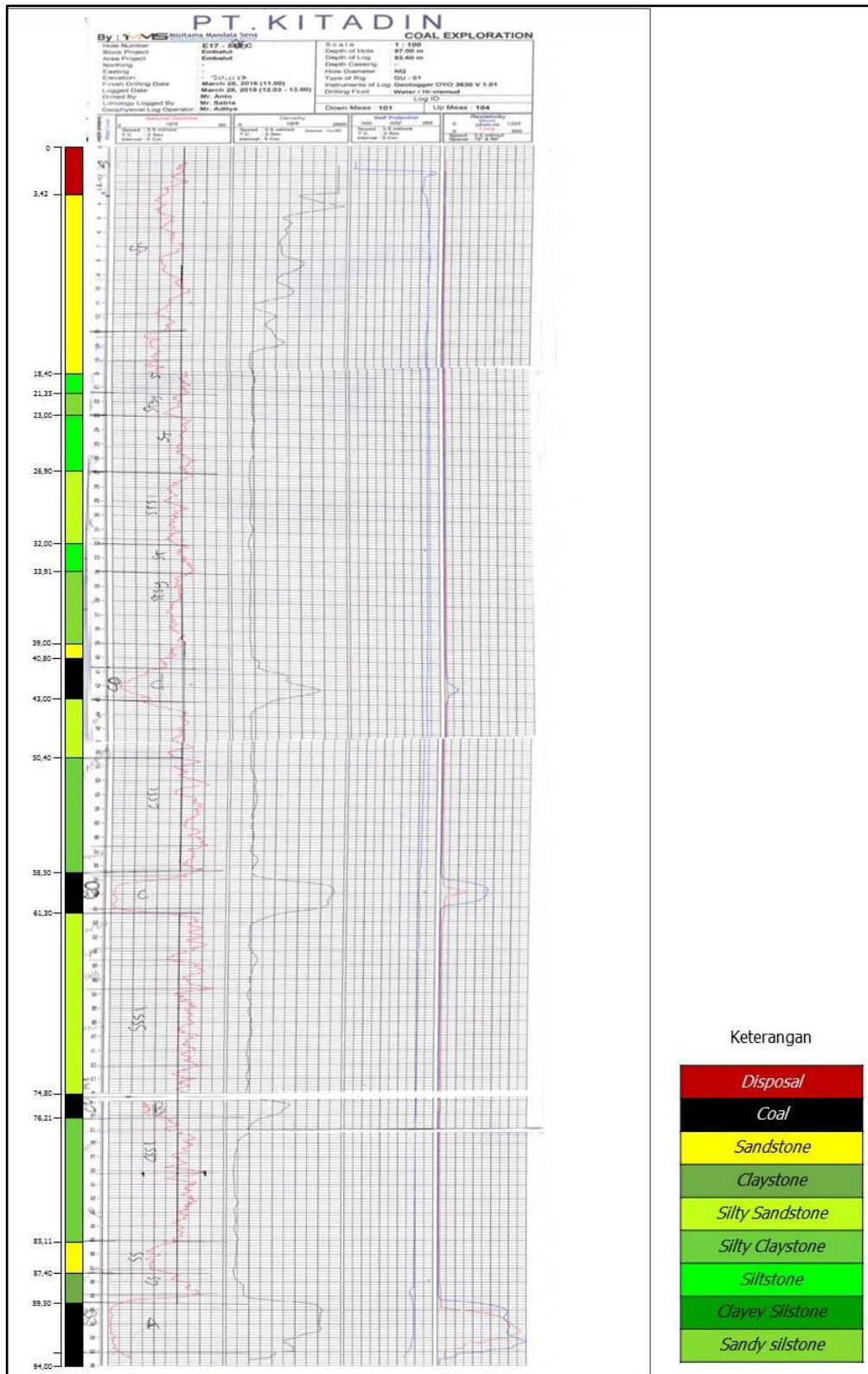
2.14 Interpretasi Titik Bor E17\_584C



2.15 Lampiran Interpretasi Titik Bor E17\_585C



## 2.16 Interpretasi Titik Bor E17\_586C



### 3.1 Tabel Litologi Daerah Penelitian

<b>Titik Bor</b>	<b>Dari (m)</b>	<b>Ke (m)</b>	<b>Ketebalan (m)</b>	<b>Litologi</b>	<b>Seam</b>
E17_559C	0.00	2.20	2.20	SO	W
E17_559C	2.20	14.30	12.10	STSY	
E17_559C	14.30	30.60	16.30	SSSI	
E17_559C	30.60	45.00	14.40	CSSI	
E17_562C	0.00	5.50	5.50	DI	DI
E17_562C	5.50	6.60	1.10	SSSI	
E17_562C	6.60	9.10	2.50	CSSI	
E17_562C	9.10	10.81	1.71	SS	
E17_562C	10.81	19.32	8.51	CSSI	
E17_562C	19.32	23.91	4.59	SSSI	
E17_562C	23.91	27.79	3.88	CSSI	
E17_562C	27.79	32.14	4.35	STSY	
E17_562C	32.14	32.69	0.55	CO	D
E17_562C	32.69	45.30	12.61	CS	
E17_562C	45.30	45.90	0.60	CO	C
E17_562C	45.90	47.45	1.55	CS	
E17_562C	47.45	49.00	1.55	SS	
E17_563C	0.00	2.00	2.00	SO	SO
E17_563C	2.00	4.12	2.12	CSSI	
E17_563C	4.12	9.99	5.87	SSSI	
E17_563C	9.99	10.90	0.91	SS	
E17_563C	10.90	12.25	1.35	STSY	
E17_563C	12.25	13.10	0.85	SS	
E17_563C	13.10	18.00	4.90	CSSI	
E17_565C	0.00	5.00	5.00	SO	w
E17_565C	5.00	13.00	8.00	ST	
E17_565C	13.00	28.89	15.89	CS	
E17_565C	28.89	30.50	1.61	CO	D
E17_565C	30.50	32.90	2.40	CS	
E17_565C	32.90	43.10	10.20	SS	
E17_565C	43.10	67.50	24.40	CS	
E17_565C	67.50	72.20	4.70	CO	C
E17_566C	0.00	6.80	6.80	DI	DI
E17_566C	6.80	11.80	5.00	SSSI	
E17_566C	11.80	14.30	2.50	CO	E
E17_566C	14.30	20.71	6.41	CSSI	

<b>Titik Bor</b>	<b>Dari (m)</b>	<b>Ke (m)</b>	<b>Ketebalan (m)</b>	<b>Litologi</b>	<b>Seam</b>
E17_566C	20.71	21.70	0.99	CS	
E17_566C	21.70	22.70	1.00	CS	
E17_566C	22.70	24.10	1.40	CO	D2
E17_566C	24.10	31.69	7.59	CS	
E17_566C	31.69	34.42	2.73	CO	D1
E17_566C	34.42	36.55	2.13	CS	
E17_566C	36.55	47.25	10.70	SS	
E17_566C	47.25	71.25	24.00	CSSI	
E17_566C	71.25	76.70	5.45	CO	C
E17_566C	76.70	80.00	3.30	CS	
E17_569C	0.00	2.00	2.00	SO	W
E17_569C	2.00	7.30	5.30	SSSI	
E17_569C	7.30	14.55	7.25	ST	
E17_569C	14.55	29.21	14.66	CSSI	
E17_569C	29.21	30.80	1.59	CO	D
E17_569C	30.80	33.40	2.60	ST	
E17_569C	33.40	43.00	9.60	SS	
E17_569C	43.00	67.15	24.15	CSSI	
E17_569C	67.15	72.35	5.20	CO	C
E17_571C	0.00	4.90	4.90	SO	W
E17_571C	4.90	6.91	2.01	CO	E
E17_571C	6.91	15.20	8.29	CSSI	
E17_571C	15.20	21.30	6.10	CS	
E17_571C	21.30	23.00	1.70	CO	D
E17_571C	23.00	25.90	2.90	CSSI	
E17_571C	25.90	36.00	10.10	SS	
E17_571C	36.00	62.20	26.20	CSSI	
E17_571C	62.20	67.40	5.20	CO	C
E17_571C	67.40	70.00	2.60	CS	
E17_572C	0.00	6.00	6.00	DI	DI
E17_572C	6.00	13.60	7.60	ST	
E17_572C	13.60	20.80	7.20	SSSI	
E17_572C	20.80	22.10	1.30	CO	D
E17_572C	22.10	28.15	6.05	CS	
E17_572C	28.15	33.20	5.05	SS	
E17_572C	33.20	39.20	6.00	CSSI	
E17_572C	39.20	44.90	5.70	STCY	
E17_572C	44.90	64.05	19.15	CSSI	



<b>Titik Bor</b>	<b>Dari (m)</b>	<b>Ke (m)</b>	<b>Ketebalan (m)</b>	<b>Litologi</b>	<b>Seam</b>
E17_572C	64.05	66.30	2.25	CO	C
E17_574C	0.00	3.00	3.00	SO	W
E17_574C	3.00	22.40	19.40	SSSI	
E17_574C	22.40	30.30	7.90	CSSI	
E17_574C	30.30	37.01	6.71	SS	
E17_574C	37.01	49.15	12.14	STCY	
E17_574C	49.15	65.00	15.85	CSSI	
E17_576C	0.00	9.00	9.00	DI	DI
E17_576C	9.00	25.00	16.00	ST	
E17_576C	25.00	32.20	7.20	SS	
E17_576C	32.20	38.30	6.10	ST	
E17_576C	38.30	40.00	1.70	CO	C2
E17_576C	40.00	45.50	5.50	CS	
E17_576C	45.50	46.50	1.00	CO	C1
E17_576C	46.50	49.00	2.50	CS	
E17_579C	0.00	10.70	10.70	DI	W
E17_579C	10.70	12.01	1.31	CO	E
E17_579C	12.01	18.90	6.89	CS	
E17_579C	18.90	20.10	1.20	CO	D
E17_579C	20.10	27.00	6.90	CSSI	
E17_579C	27.00	35.70	8.70	SS	
E17_579C	35.70	62.10	26.40	CSSI	
E17_579C	62.10	64.00	1.90	CO	C
E17_581C	0.00	3.00		SO	
E17_581C	3.00	17.70	14.70	ST	
E17_581C	17.70	22.90	5.20	CSSI	
E17_581C	22.90	29.60	6.70	CS	
E17_581C	29.60	36.00	6.40	SS	
E17_581C	36.00	54.50	18.50	CS	
E17_581C	54.50	59.70	5.20	CO	C
E17_581C	59.70	64.00	4.30	CS	
E17_582C	0.00	2.50	2.50	SO	W
E17_582C	2.50	18.21	15.71	CSSI	
E17_582C	18.21	20.33	2.12	CO	D
E17_582C	20.33	34.65	14.32	SSSI	
E17_582C	34.65	61.32	26.67	CSSI	
E17_582C	61.32	66.52	5.20	CO	C
E17_582C	66.52	70.00	3.48	CS	

<b>Titik Bor</b>	<b>Dari (m)</b>	<b>Ke (m)</b>	<b>Ketebalan (m)</b>	<b>Litologi</b>	<b>Seam</b>
E17_583C	0.00	2.79	2.79	DI	
E17_583C	2.79	5.40	2.61	CS	
E17_583C	5.40	32.00	26.60	SS	
E17_583C	32.00	37.65	5.65	CSSI	
E17_583C	37.65	39.68	2.03	CO	D
E17_583C	39.68	71.52	31.84	CSSI	
E17_583C	71.52	76.21	4.69	CO	C
E17_583C	76.21	80.00	3.79	CS	
E17_584C	0.00	4.80	4.80	SO	W
E17_584C	4.80	8.40	3.60	ST	
E17_584C	8.40	13.70	5.30	CSSI	
E17_584C	13.70	20.30	6.60	CO	C
E17_584C	20.30	25.00	4.70	CS	
E17_585C	0.00	4.00	4.00	SO	W
E17_585C	4.00	8.60	4.60	ST	
E17_585C	8.60	20.50	11.90	CS	
E17_585C	20.50	21.60	1.10	CO	E
E17_585C	21.60	23.50	1.90	SS	
E17_585C	23.50	36.70	13.20	CS	
E17_585C	36.70	41.30	4.60	SS	
E17_585C	41.30	60.00	18.70	CSSI	
E17_585C	60.00	65.30	5.30	CO	C
E17_585C	65.30	68.00	2.70	CS	
E17_586C	0.00	3.42	3.42	DI	DI
E17_586C	3.42	18.40	14.98	SS	
E17_586C	18.40	21.35	2.95	ST	
E17_586C	21.35	23.00	1.65	STSY	
E17_586C	23.00	26.90	3.90	ST	
E17_586C	26.90	32.00	5.10	SSSI	
E17_586C	32.00	33.91	1.91	ST	
E17_586C	33.91	39.00	5.09	STSY	
E17_586C	39.00	40.80	1.80	SS	
E17_586C	40.80	43.00	2.20	CO	D
E17_586C	43.00	50.40	7.40	SSSI	
E17_586C	50.40	58.50	8.10	CSSI	
E17_586C	58.50	61.30	2.80	CO	C
E17_586C	61.30	74.80	13.50	CS	
E17_586C	74.80	76.21	1.41	CO	B

<b>Titik Bor</b>	<b>Dari (m)</b>	<b>Ke (m)</b>	<b>Ketebalan (m)</b>	<b>Litologi</b>	<b>Seam</b>
E17_586C	76.21	85.11	8.90	CSSI	
E17_586C	85.11	87.40	2.29	SS	
E17_586C	87.40	89.50	2.10	CS	
E17_586C	89.50	94.00	4.50	CO	A

Keterangan Litologi :

<b><u>Kode</u></b>	<b><u>Keterangan</u></b>
<b>DI</b>	<b>Disposal</b>
<b>CS</b>	<b><u>Claystone</u></b>
<b>SS</b>	<b>Sandstone</b>
<b>CSSI</b>	<b><u>Silty Claystone</u></b>
<b>CO</b>	<b>Coal</b>
<b>SO</b>	<b>Top Soil</b>
<b>ST</b>	<b>Siltstone</b>
<b>STSY</b>	<b>Sandy Siltstone</b>
<b>SSSI</b>	<b><u>Silty Sandstone</u></b>

#### 4.1 Elevasi Daerah Penelitian

<b>Hole</b>	<b>Easting</b>	<b>Northing</b>	<b>Elevation (m)</b>	<b>Depth (m)</b>
E17_553C	511162.5	9962699	41.449	81
E17_554C	511092.2	9962597	30.882	72
E17_559C	511400.6	9962714	40.527	45
E17_562C	511500.9	9962883	50.2	49
E17_563C	510903.2	9962597	44.594	103
E17_565C	511042.5	9962619	30.588	75
E17_566C	511007.7	9962673	30.973	80
E17_569C	511077.3	9962650	31.476	74
E17_571C	511082.3	9962559	28.043	70
E17_572C	511176.9	9962649	36.646	70
E17_574C	511139.3	9962577	33.876	72
E17_576C	511354	9962534	30.788	49
E17_579C	511129.9	9962535	31.246	70
E17_581C	511249.2	9962558	34.594	63
E17_582C	511029	9962569	25.085	70
E17_583C	510976.6	9962578	27.367	80
E17_584C	511393.2	9962482	19.492	25
E17_585C	511214.2	9962777	41.792	72
E17_586C	510832.8	9962747	30.012	97

## 5.1 Model penampang penelitian daerah

