

## DAFTAR PUSTAKA

- Ahmad, Dadang. 2008. Ciri Makasar Sebagai Waterfront Makin Hilang, *Harian Pagi Fajar*. Makasar, 21 Januari 2008.
- Badan Litbang PU Departemen Pekerjaan Umum. Jakarta: Republik Indonesia.
- Badan Pusat Statistik. Jumlah Kendaraan Bermotor, (online) (<https://www.bps.go.id/linkTableDinamis/view/id/1133>) diakses tanggal 25 Februari 2021.
- Djalante, S., 2010. Analisis Tingkat Kebisingan Di Jalan Raya Yang Menggunakan Alat Pemberi Isyarat Lalu Lintas (APILL) (Studi Kasus: Simpang Ade Swalayan). *Jurnal SMARTek*. November 2010.
- Galloway, W.E., 1983, *Depositional System and Sequence in The Exploration for Sandstone and Stratigraphic Traps*, Springer – Verlag, New York, USA.
- Herdianto. 2013, *Prediksi Kerusakan Motor Induksi Menggunakan Metode Jaringan Saraf Tiruan Backpropagation*. Medan: Universitas Sumatera Utara.
- Hustim, M., and Fujimoto, K. 2012 a. Acoustical Characteristics of Horn Sound of Vehicles. *Journal of Architecture and Urban Design*, Kyushu University, Japan.
- Hustim, Muralia., dkk. 2012. Analisis Kebisingan Lalu Lintas Pada Ruas Jalan di Kota Makassar. Universitas Hasanuddin.
- Malkamah, S., 1992, Hubungan antara Volume, Kecepatan, Komposisi Kendaraan dan Tingkat Kebisingan di Jalan Raya, MSTT-UGM, Yogyakarta.
- Nasri, 1997 *Teknik Pengukuran dan Pemantauan Kebisingan di Tempat Kerja*.

- Peraturan Daerah Kota Makassar No. 4 tahun 2015. *Tentang Rencana Tata Ruang Wilayah Kota Makassar 2015-2034.*
- Peraturan Menteri Lingkungan Hidup No.Kepmen 48/Men.LH/11/1996. *Tentang Kebisingan.*
- Peraturan Menteri Lingkungan Hidup Nomor 48 Tahun 1996. *Tentang Baku Mutu Tingkat Kebisingan.*
- Peraturan Menteri Kesehatan No. 718/Menkes/Per/XI/1987. *Tentang Kebisingan.*
- Prahasta, Eddy. 2002. *Sistem Informasi Geografis: Konsep-Konsep Dasar Informasi Geografis.* Bandung: Informatika Bandung.
- Quartieri, J., Mastorakis, N. E., Iannone, G., Guarnaccia, C., Ambrosio, D.S., Troisi, A., Lenza, TLL., 2010. *A Review of Traffic Noise Predictive Models, Technical University of Sofia, Bulgaria.*
- Ramli, Isran. Hustim, Muralia. Ariani, ulfa. 2014. *Analisis Tingkat Kebisingan Pada Kawasan Perbelanjaan (Mall) Di Kota Makassar dan Dampaknya Terhadap Lingkungan.* Jurnal Tugas Akhir. Universitas Hasanuddin. Makassar.
- Sakamoto, S., Fukushima, A., dan Yamamoto, K. 2009. *Road traffic noise prediction model "ASJ RTN-Model 2008" proposed by the Acoustical Society of Japan-Part 3: Calculation model of sound propagation.* Canada : Inter Noise 2009.
- Sam. 2012. Studi Model Hubungan Karakteristik Lalu Lintas Dengan Tingkat Kebisingan Kendaraan Pada Ruas Jalan Tol Ir. Sutami Makassar.Jurnal Tugas Akhir. Universitas Hasanuddin. Makassar.
- Sani, Zulfar. 2010. Transportasi. Jakarta: Penerbit Universitas Indonesia bahasa Indonesia, diakses 07 Juni 2021.
- Voinov, A. (2008). *System Science and Modeling for Ecological Economics.* Academic Press-Elseiver. London.

- Yamamoto, K. 2010. *Road traffic noise prediction model "ASJ RTN-Model 2008" Report of The Research Committee on Road Traffic Noise*. Jurnal The Acoustical Society of Japan.
- Zaini, A.K. (2013). *Analisa Kebisingan Arus Lalu Lintas Terhadap Rumah Sakit Prof. Dr. Tabrani Rab Pekanbaru*.

# LAMPIRAN

**Lampiran 1. Tabel Rekap Volume Kendaraan Jalan Metro Tanjung Bunga Titik R1 s/d R14**

Hari/Tanggal : Selasa, 22 Juni 2021				
NO	Waktu	Jumlah Kendaraan		
		MC	LV	HV
1	7	155	105	2
2	8	209	128	5
3	9	188	137	2
4	10	197	151	13
5	11	185	144	10
6	12	172	197	7
7	13	180	179	12
8	14	256	178	11
9	15	298	175	5
10	16	400	245	5
11	17	475	337	7
12	18	391	240	5

Jalan Metro Tanjung Bunga (R1)

Hari/Tanggal : Selasa, 22 Juni 2021				
NO	Waktu	Jumlah Kendaraan		
		MC	LV	HV
1	7	499	199	1
2	8	407	181	5
3	9	223	163	4
4	10	191	149	7
5	11	118	125	2
6	12	161	148	7
7	13	153	144	7
8	14	209	229	6
9	15	161	159	8
10	16	336	233	6
11	17	282	172	6
12	18	228	171	4

Jalan Metro Tanjung Bunga (R2)

Hari/Tanggal : Rabu, 23 Juni 2021				
NO	Waktu	Jumlah Kendaaan		
		MC	LV	HV
1	7	690	256	14
2	8	606	235	5
3	9	376	216	9
4	10	351	258	16
5	11	312	261	8
6	12	351	252	11
7	13	313	323	7
8	14	327	302	12
9	15	354	355	6
10	16	637	396	12
11	17	737	444	11
12	18	521	425	5

Jalan Metro Tanjung Bunga (R3)

Hari/Tanggal : Rabu, 23 Juni 2021				
NO	Waktu	Jumlah Kendaaan		
		MC	LV	HV
1	7	713	237	3
2	8	575	257	6
3	9	428	258	10
4	10	337	228	8
5	11	317	303	6
6	12	293	266	4
7	13	326	265	9
8	14	315	315	21
9	15	404	397	11
10	16	529	508	12
11	17	541	482	8
12	18	422	417	3

Jalan Metro Tanjung Bunga (R4)

Hari/Tanggal : Kamis, 24 Juni 2021				
NO	Waktu	Jumlah Kendaraan		
		MC	LV	HV
1	7	749	205	3
2	8	657	254	5
3	9	408	223	12
4	10	305	242	10
5	11	318	283	10
6	12	343	298	6
7	13	266	337	17
8	14	345	271	14
9	15	511	399	8
10	16	536	475	16
11	17	487	404	14
12	18	376	384	8

Jalan Metro Tanjung Bunga (R5)

Hari/Tanggal : Kamis, 24 Juni 2021				
NO	Waktu	Jumlah Kendaraan		
		MC	LV	HV
1	7	505	152	0
2	8	478	233	2
3	9	269	184	7
4	10	294	237	9
5	11	227	215	4
6	12	274	239	6
7	13	300	287	4
8	14	283	313	12
9	15	357	318	7
10	16	436	380	10
11	17	497	423	9
12	18	354	289	9

Jalan Metro Tanjung Bunga (R6)

Hari/Tanggal : Kamis, 17 Juni 2021				
NO	Waktu	Jumlah Kendaraan		
		MC	LV	HV
1	7	503	143	0
2	8	596	232	5
3	9	397	212	8
4	10	302	180	7
5	11	321	220	7
6	12	322	217	7
7	13	313	283	12
8	14	241	258	6
9	15	503	421	7
10	16	530	324	6
11	17	601	306	5
12	18	452	325	2

Jalan Metro Tanjung Bunga (R7)

Hari/Tanggal : Jum'at, 18 Juni 2021				
NO	Waktu	Jumlah Kendaraan		
		MC	LV	HV
1	7	505	143	5
2	8	503	173	8
3	9	338	171	5
4	10	269	222	5
5	11	329	238	9
6	12	188	235	2
7	13	246	259	8
8	14	318	273	10
9	15	349	275	4
10	16	352	309	5
11	17	412	355	8
12	18	346	298	3

Jalan Metro Tanjung Bunga (R8)



Hari/Tanggal : Jum'at, 18 Juni 2021				
NO	Waktu	Jumlah Kendaraan		
		MC	LV	HV
1	7	758	187	4
2	8	572	175	4
3	9	358	215	6
4	10	328	178	12
5	11	269	250	4
6	12	250	233	9
7	13	311	317	10
8	14	331	319	2
9	15	394	344	5
10	16	532	464	4
11	17	489	427	7
12	18	435	380	7

Jalan Metro Tanjung Bunga (R9)

Hari/Tanggal : Sabtu, 19 Juni 2021				
NO	Waktu	Jumlah Kendaraan		
		MC	LV	HV
1	7	386	115	1
2	8	466	177	7
3	9	359	209	7
4	10	353	217	7
5	11	312	236	9
6	12	359	207	2
7	13	326	271	15
8	14	348	254	10
9	15	281	207	11
10	16	344	244	6
11	17	467	284	5
12	18	405	230	6

Jalan Metro Tanjung Bunga (R10)

Hari/Tanggal : Sabtu, 19 Juni 2021				
NO	Waktu	Jumlah Kendaraan		
		MC	LV	HV
1	7	733	152	5
2	8	784	208	10
3	9	511	270	15
4	10	505	233	22
5	11	476	279	11
6	12	408	297	11
7	13	511	325	16
8	14	452	265	10
9	15	406	307	11
10	16	595	318	10
11	17	770	292	3
12	18	694	323	5

Jalan Metro Tanjung Bunga (R11)

Hari/Tanggal : Minggu, 20 Juni 2021				
NO	Waktu	Jumlah Kendaraan		
		MC	LV	HV
1	7	411	139	2
2	8	512	209	2
3	9	491	192	4
4	10	525	268	4
5	11	552	263	6
6	12	486	244	5
7	13	508	188	3
8	14	533	204	9
9	15	517	244	6
10	16	623	338	4
11	17	584	277	7
12	18	541	290	3

Jalan Metro Tanjung Bunga (R12)

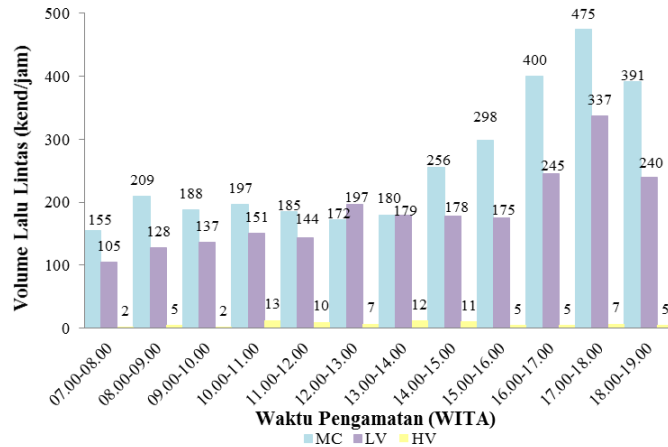
Hari/Tanggal : Minggu, 20 Juni 2021				
NO	Waktu	Jumlah Kendaraan		
		MC	LV	HV
1	7	487	231	3
2	8	400	161	1
3	9	535	202	1
4	10	510	248	1
5	11	492	225	5
6	12	513	233	2
7	13	461	247	3
8	14	437	250	3
9	15	502	199	10
10	16	614	283	5
11	17	587	277	2
12	18	528	243	4

Jalan Metro Tanjung Bunga (R13)

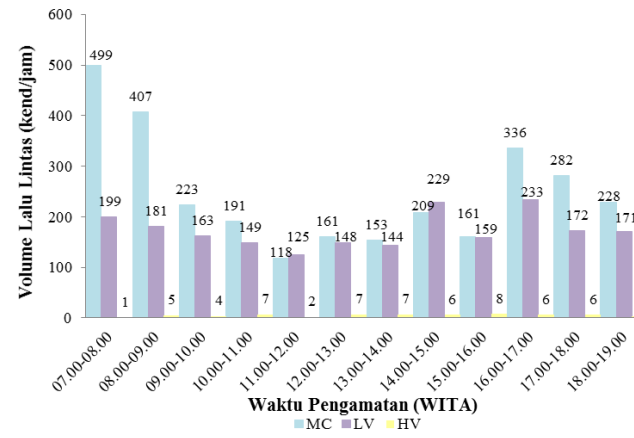
Hari/Tanggal : Senin, 21 Juni 2021				
NO	Waktu	Jumlah Kendaraan		
		MC	LV	HV
1	7	718	126	8
2	8	681	137	5
3	9	489	115	7
4	10	379	125	6
5	11	355	142	9
6	12	357	132	11
7	13	340	131	15
8	14	365	159	9
9	15	325	163	9
10	16	610	154	4
11	17	517	138	16
12	18	507	168	5

Jalan Metro Tanjung Bunga (R14)

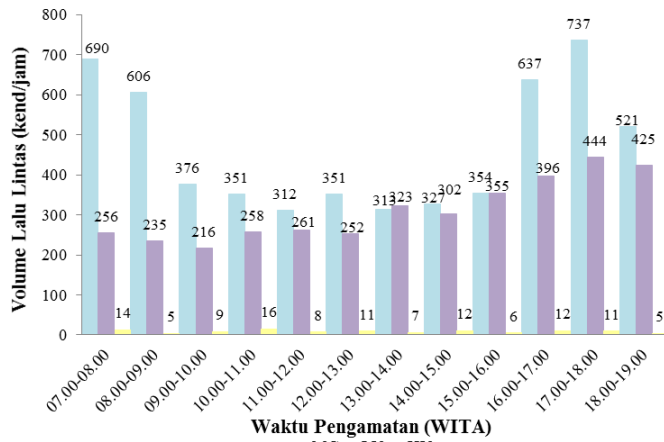
**Lampiran 2. Grafik Rekap Volume Kendaraan Jalan Metro Tanjung Bunga Titik R1 s/d R14**



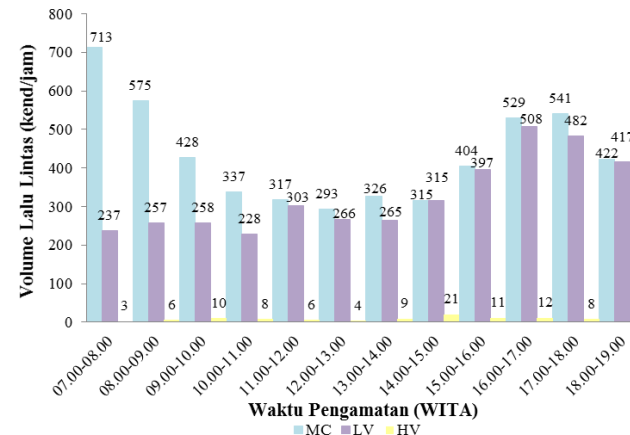
**Jalan Metro Tanjung Bunga (R1)**



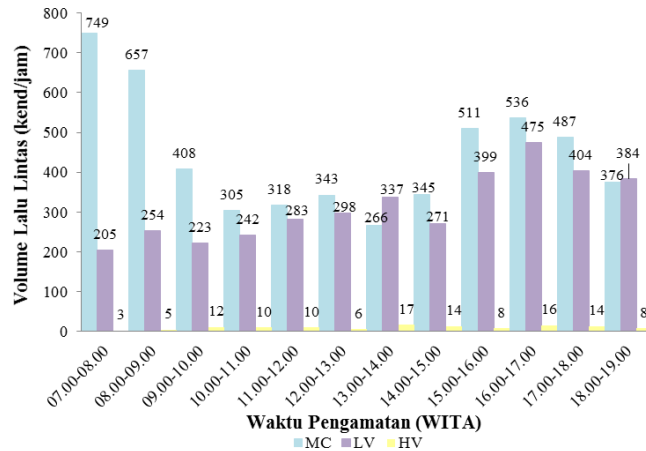
**Jalan Metro Tanjung Bunga (R2)**



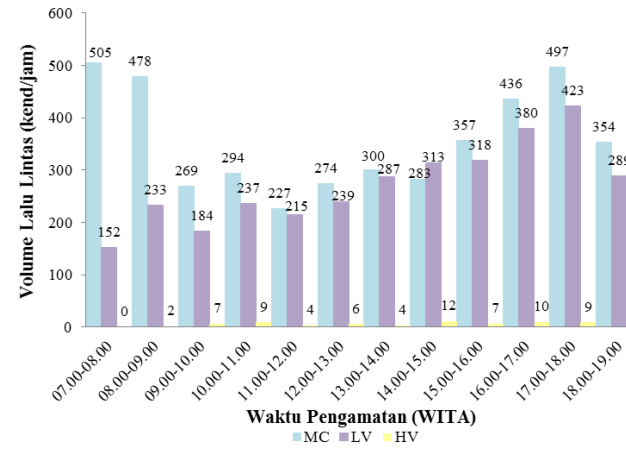
**Jalan Metro Tanjung Bunga (R3)**



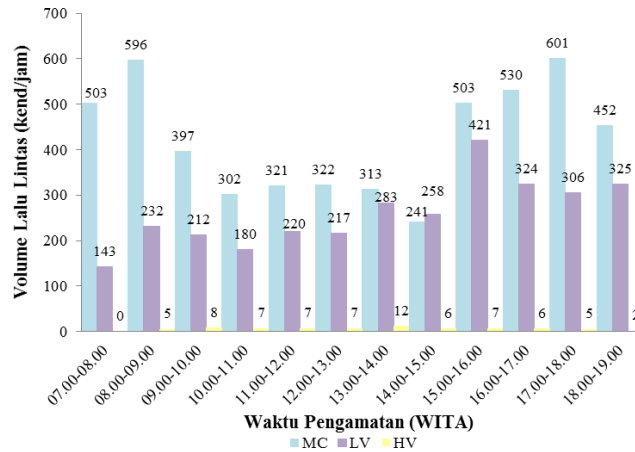
**Jalan Metro Tanjung Bunga (R4)**



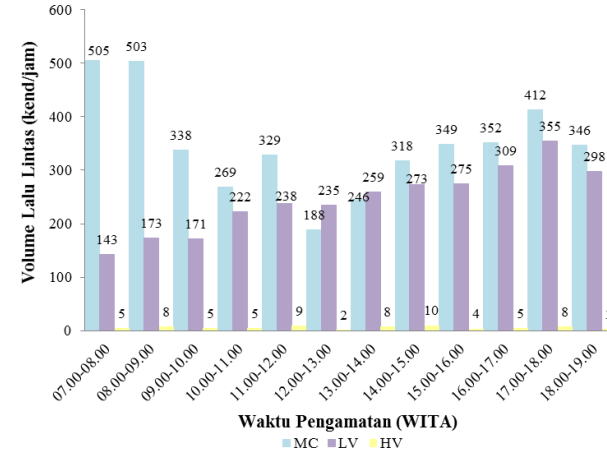
Jalan Metro Tanjung Bunga (R5)



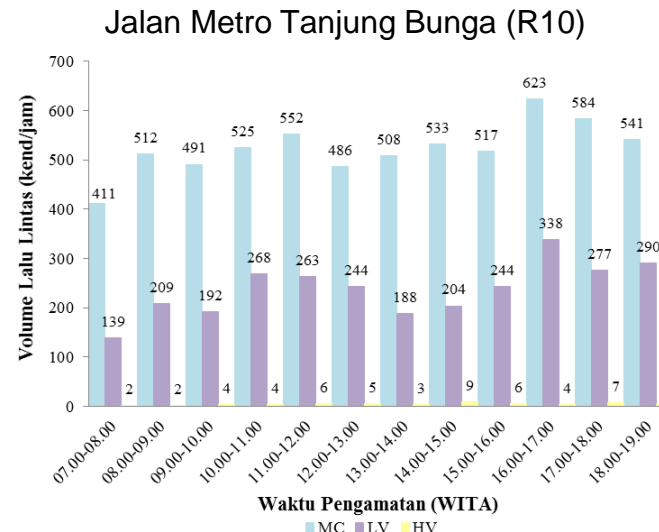
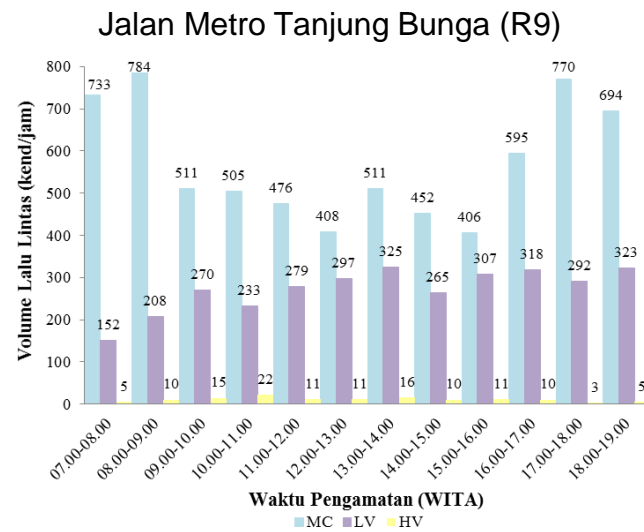
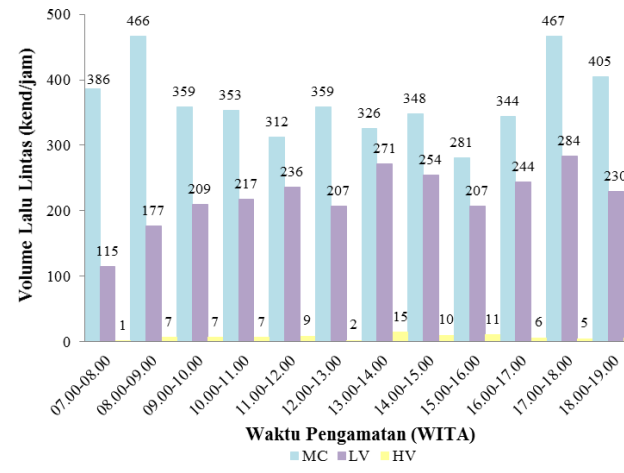
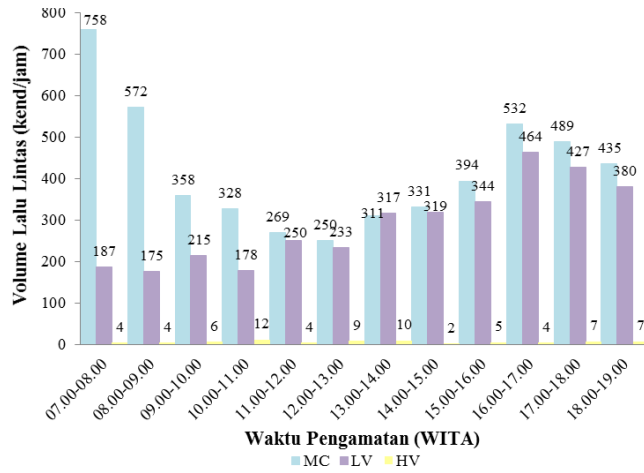
Jalan Metro Tanjung Bunga (R6)



Jalan Metro Tanjung Bunga (R7)

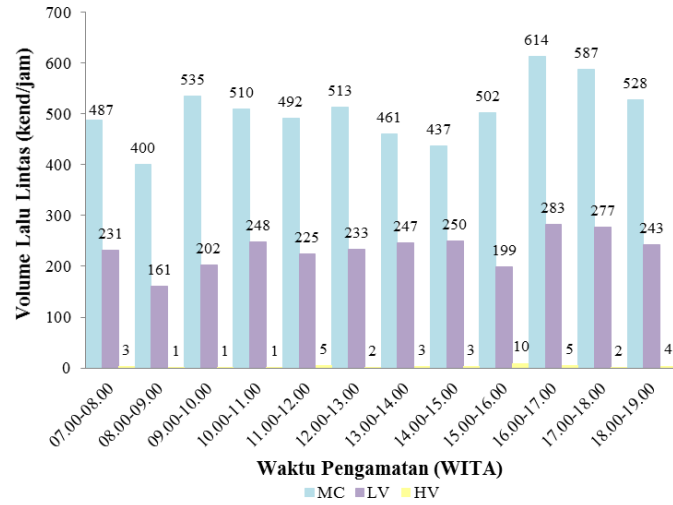


Jalan Metro Tanjung Bunga (R8)

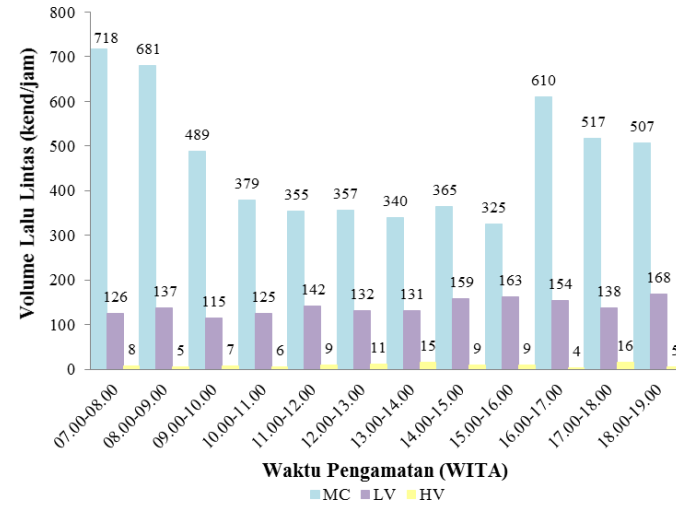


**Jalan Metro Tanjung Bunga (R11)**

**Jalan Metro Tanjung Bunga (R12)**



Jalan Metro Tanjung Bunga (R13)

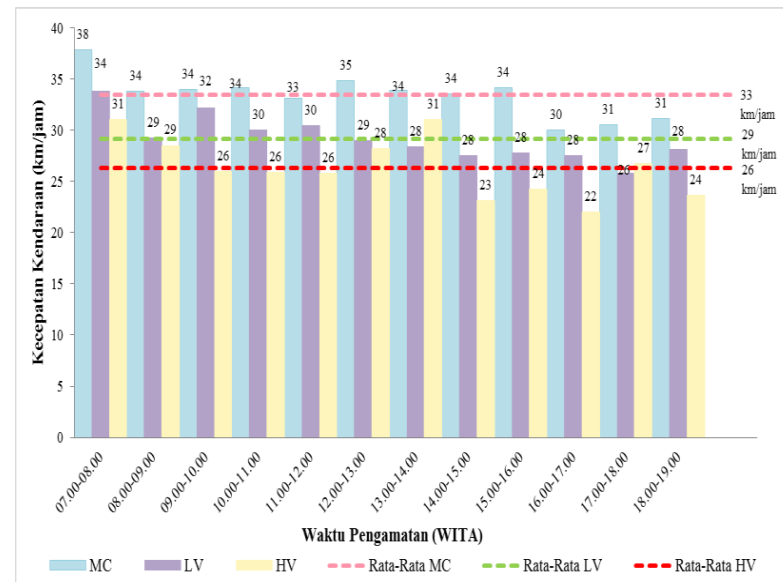


Jalan Metro Tanjung Bunga (R14)

Lampiran 3. Tabel dan Grafik Rekap Kecepatan Kendaraan Jalan Metro Tanjung Bunga Titik R1 s/d R14

Waktu	Kecepatan rata-rata (km/jam)		
	MC	LV	HV
07.00-08.00	38	34	31
08.00-09.00	34	29	29
09.00-10.00	34	32	26
10.00-11.00	34	30	26
11.00-12.00	33	30	26
12.00-13.00	35	29	28
13.00-14.00	34	28	31
14.00-15.00	34	28	23
15.00-16.00	34	28	24
16.00-17.00	30	28	22
17.00-18.00	31	26	27
18.00-19.00	31	28	24
Rata -Rata	33	29	26

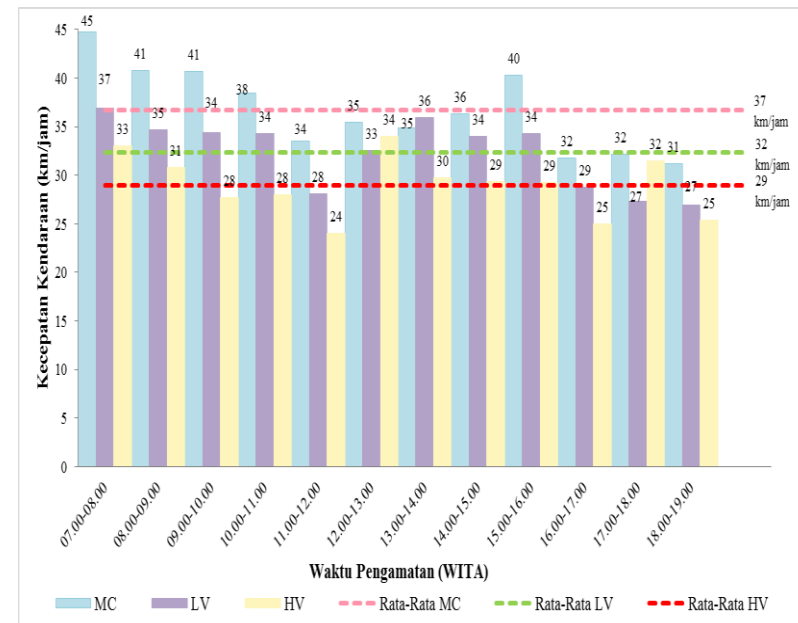
Jalan Metro Tanjung Bunga (R1)





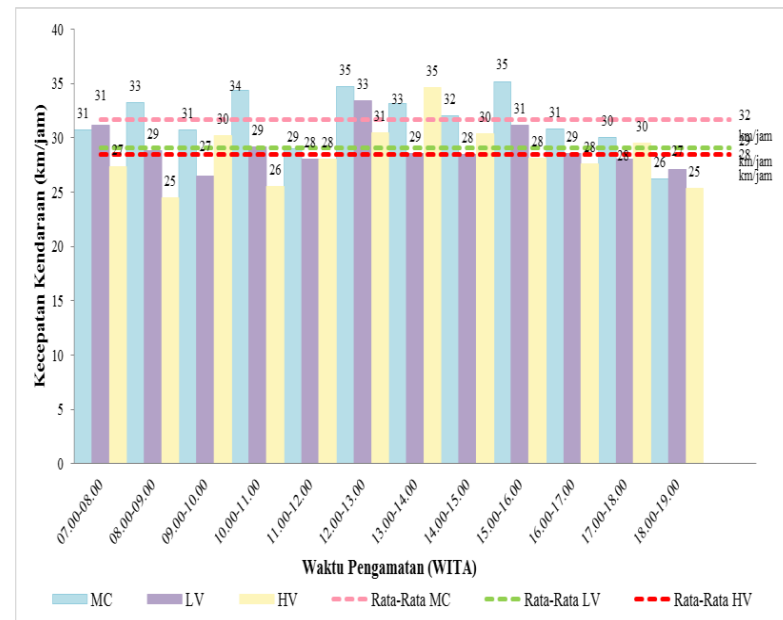
Waktu	Kecepatan rata-rata (km/jam)		
	MC	LV	HV
07.00-08.00	45	37	33
08.00-09.00	41	35	31
09.00-10.00	41	34	28
10.00-11.00	38	34	28
11.00-12.00	34	28	24
12.00-13.00	35	33	34
13.00-14.00	35	36	30
14.00-15.00	36	34	29
15.00-16.00	40	34	29
16.00-17.00	32	29	25
17.00-18.00	32	27	32
18.00-19.00	31	27	25
Rata -Rata	37	32	29

Jalan Metro Tanjung Bunga (R2)



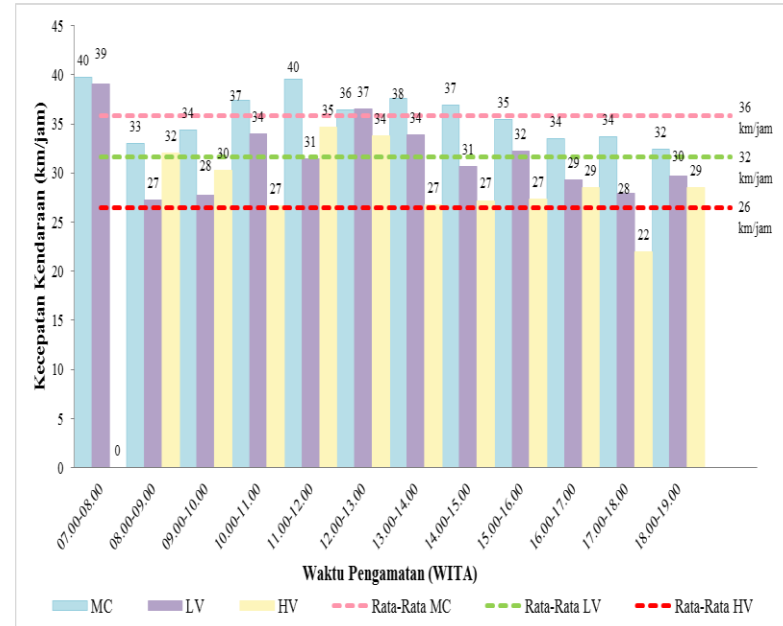
Waktu	Kecepatan rata-rata (km/jam)		
	MC	LV	HV
07.00-08.00	31	31	27
08.00-09.00	33	29	25
09.00-10.00	31	27	30
10.00-11.00	34	29	26
11.00-12.00	29	28	28
12.00-13.00	35	33	31
13.00-14.00	33	29	35
14.00-15.00	32	28	30
15.00-16.00	35	31	28
16.00-17.00	31	29	28
17.00-18.00	30	28	30
18.00-19.00	26	27	25
Rata -Rata	32	29	28

Jalan Metro Tanjung Bunga (R3)



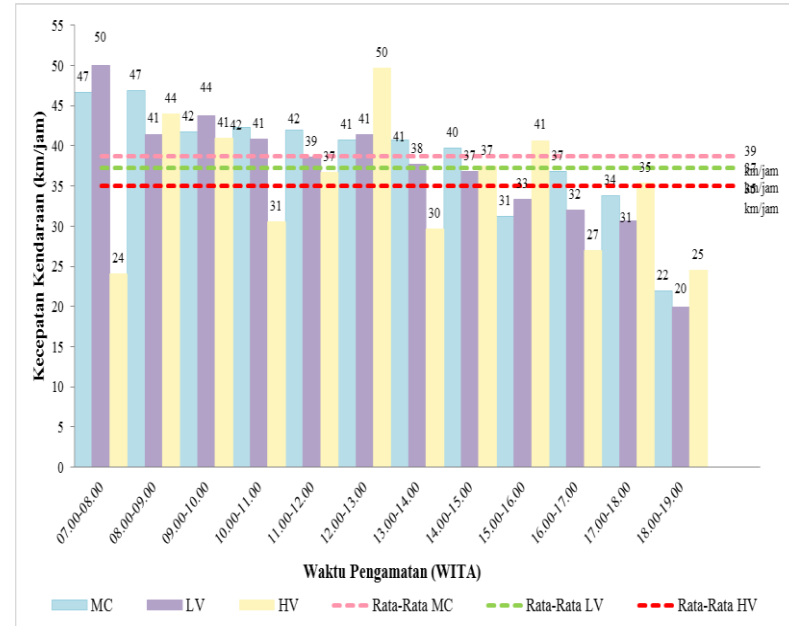
Waktu	Kecepatan rata-rata (km/jam)		
	MC	LV	HV
07.00-08.00	40	39	0
08.00-09.00	33	27	32
09.00-10.00	34	28	30
10.00-11.00	37	34	27
11.00-12.00	40	31	35
12.00-13.00	36	37	34
13.00-14.00	38	34	27
14.00-15.00	37	31	27
15.00-16.00	35	32	27
16.00-17.00	34	29	29
17.00-18.00	34	28	22
18.00-19.00	32	30	29
Rata -Rata	36	32	26

Jalan Metro Tanjung Bunga (R4)



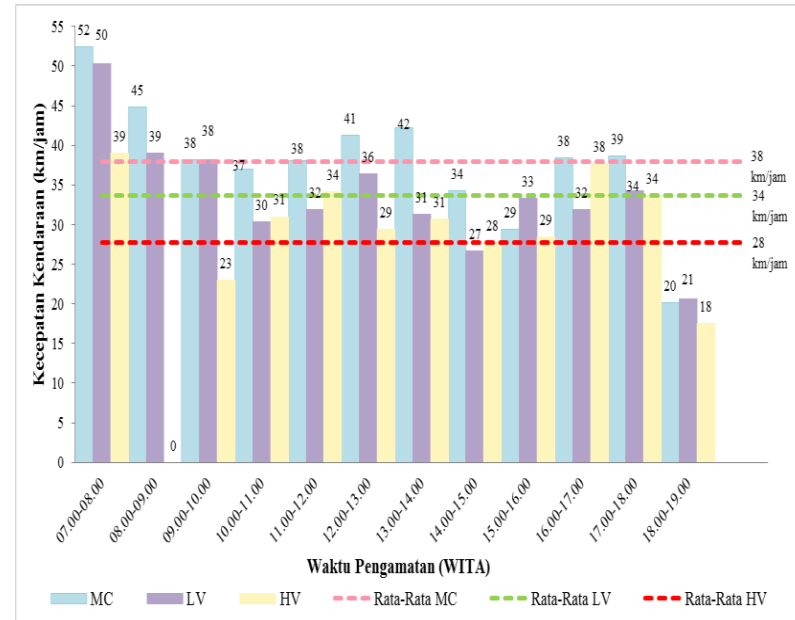
Waktu	Kecepatan rata-rata (km/jam)		
	MC	LV	HV
07.00-08.00	47	50	24
08.00-09.00	47	41	44
09.00-10.00	42	44	41
10.00-11.00	42	41	31
11.00-12.00	42	39	37
12.00-13.00	41	41	50
13.00-14.00	41	38	30
14.00-15.00	40	37	37
15.00-16.00	31	33	41
16.00-17.00	37	32	27
17.00-18.00	34	31	35
18.00-19.00	22	20	25
Rata -Rata	39	37	35

Jalan Metro Tanjung Bunga (R5)



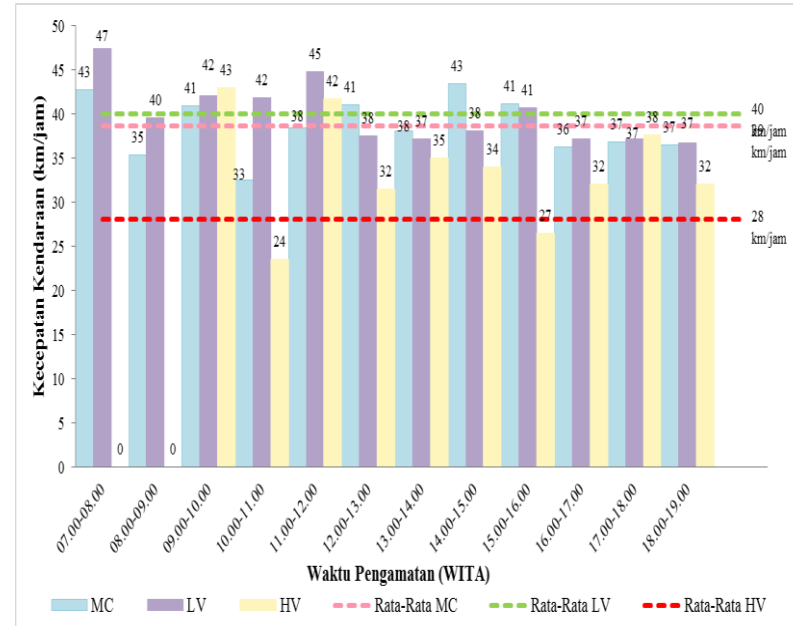
Waktu	Kecepatan rata-rata (km/jam)		
	MC	LV	HV
07.00-08.00	52	50	39
08.00-09.00	45	39	0
09.00-10.00	38	38	23
10.00-11.00	37	30	31
11.00-12.00	38	32	34
12.00-13.00	41	36	29
13.00-14.00	42	31	31
14.00-15.00	34	27	28
15.00-16.00	29	33	29
16.00-17.00	38	32	38
17.00-18.00	39	34	34
18.00-19.00	20	21	18
Rata -Rata	38	34	28

Jalan Metro Tanjung Bunga (R6)



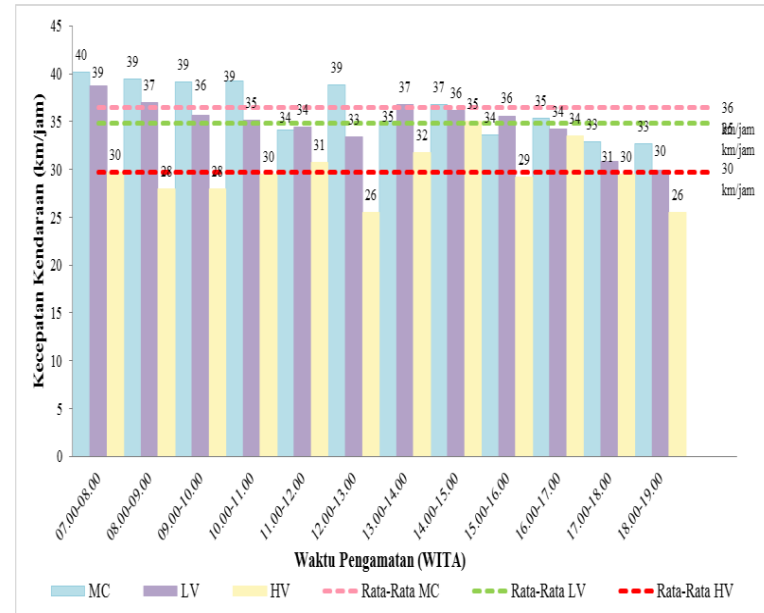
Waktu	Kecepatan rata-rata (km/jam)		
	MC	LV	HV
07.00-08.00	43	47	0
08.00-09.00	35	40	0
09.00-10.00	41	42	43
10.00-11.00	33	42	24
11.00-12.00	38	45	42
12.00-13.00	41	38	32
13.00-14.00	38	37	35
14.00-15.00	43	38	34
15.00-16.00	41	41	27
16.00-17.00	36	37	32
17.00-18.00	37	37	38
18.00-19.00	37	37	32
Rata -Rata	39	40	28

Jalan Metro Tanjung Bunga (R7)



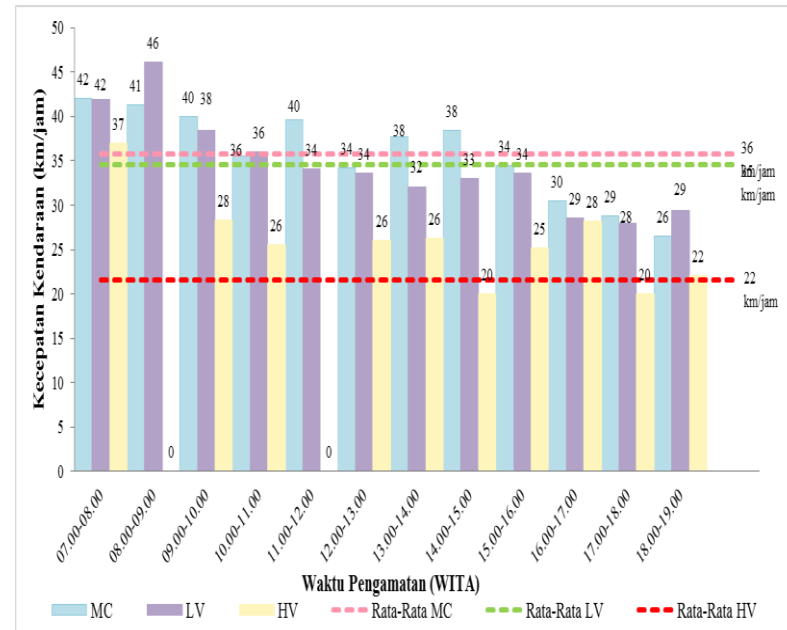
Waktu	Kecepatan rata-rata (km/jam)		
	MC	LV	HV
07.00-08.00	40	39	30
08.00-09.00	39	37	28
09.00-10.00	39	36	28
10.00-11.00	39	35	30
11.00-12.00	34	34	31
12.00-13.00	39	33	26
13.00-14.00	35	37	32
14.00-15.00	37	36	35
15.00-16.00	34	36	29
16.00-17.00	35	34	34
17.00-18.00	33	31	30
18.00-19.00	33	30	26
Rata -Rata	36	35	30

Jalan Metro Tanjung Bunga (R8)



Waktu	Kecepatan rata-rata (km/jam)		
	MC	LV	HV
07.00-08.00	42	42	37
08.00-09.00	41	46	0
09.00-10.00	40	38	28
10.00-11.00	36	36	26
11.00-12.00	40	34	0
12.00-13.00	34	34	26
13.00-14.00	38	32	26
14.00-15.00	38	33	20
15.00-16.00	34	34	25
16.00-17.00	30	29	28
17.00-18.00	29	28	20
18.00-19.00	26	29	22
Rata -Rata	36	35	22

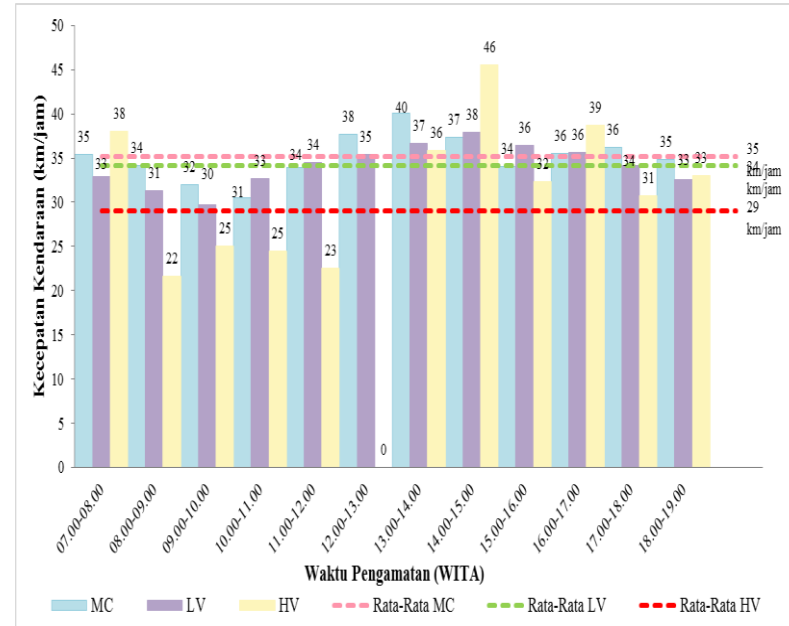
Jalan Metro Tanjung Bunga (R9)





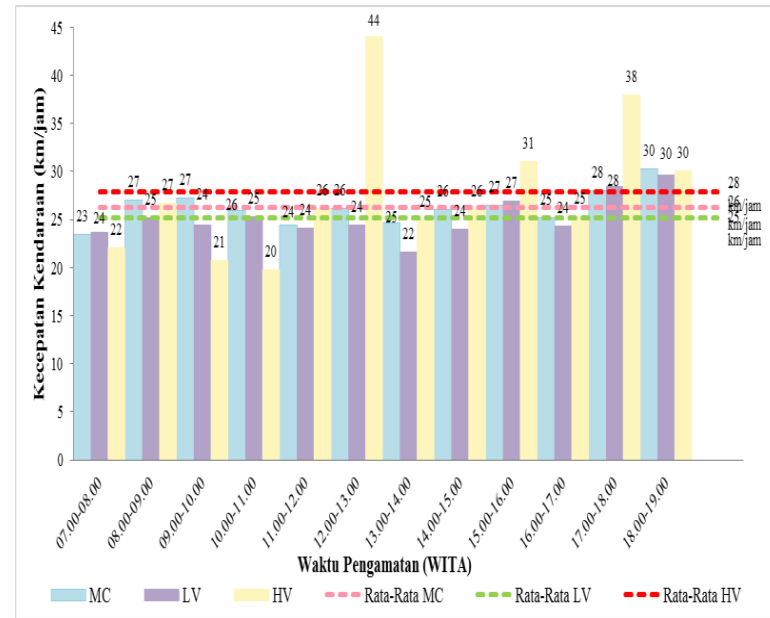
Waktu	Kecepatan rata-rata (km/jam)		
	MC	LV	HV
07.00-08.00	35	33	38
08.00-09.00	34	31	22
09.00-10.00	32	30	25
10.00-11.00	31	33	25
11.00-12.00	34	34	23
12.00-13.00	38	35	0
13.00-14.00	40	37	36
14.00-15.00	37	38	46
15.00-16.00	34	36	32
16.00-17.00	36	36	39
17.00-18.00	36	34	31
18.00-19.00	35	33	33
Rata -Rata	35	34	29

Jalan Metro Tanjung Bunga (R10)



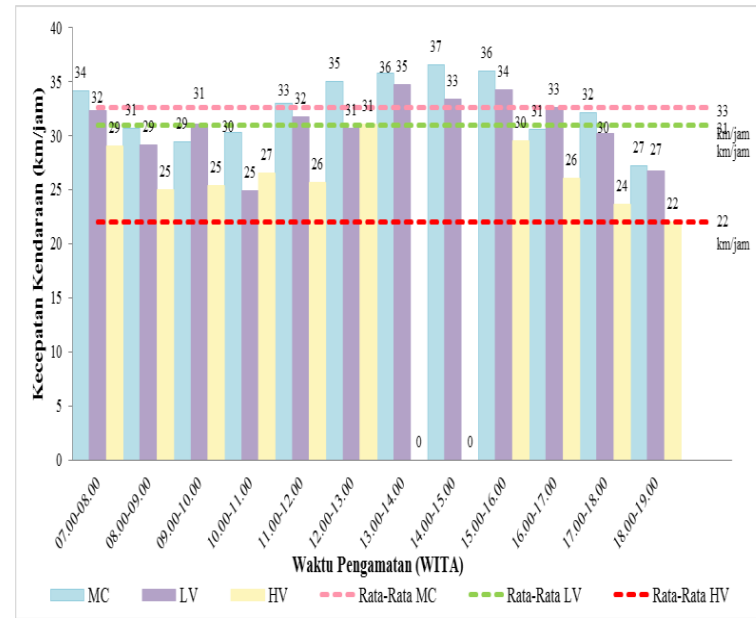
Waktu	Kecepatan rata-rata (km/jam)		
	MC	LV	HV
07.00-08.00	23	24	22
08.00-09.00	27	25	27
09.00-10.00	27	24	21
10.00-11.00	26	25	20
11.00-12.00	24	24	26
12.00-13.00	26	24	44
13.00-14.00	25	22	25
14.00-15.00	26	24	26
15.00-16.00	27	27	31
16.00-17.00	25	24	25
17.00-18.00	28	28	38
18.00-19.00	30	30	30
Rata -Rata	26	25	28

Jalan Metro Tanjung Bunga (R11)



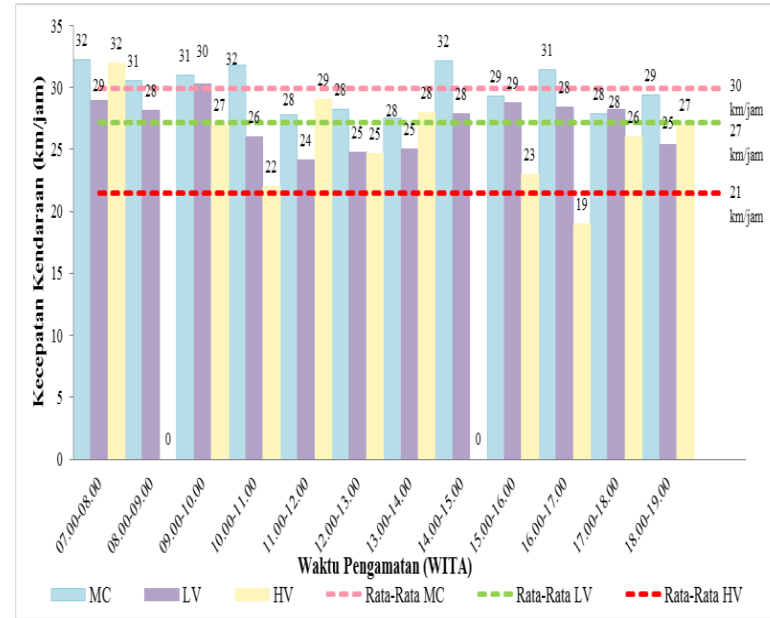
Waktu	Kecepatan rata-rata (km/jam)		
	MC	LV	HV
07.00-08.00	34	32	29
08.00-09.00	31	29	25
09.00-10.00	29	31	25
10.00-11.00	30	25	27
11.00-12.00	33	32	26
12.00-13.00	35	31	31
13.00-14.00	36	35	0
14.00-15.00	37	33	0
15.00-16.00	36	34	30
16.00-17.00	31	33	26
17.00-18.00	32	30	24
18.00-19.00	27	27	22
Rata -Rata	33	31	22

Jalan Metro Tanjung Bunga (R12)



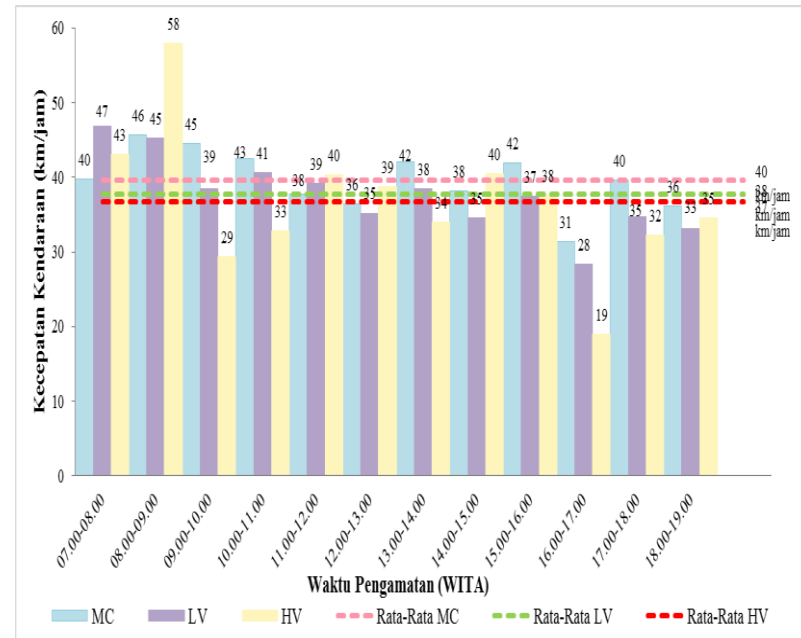
Waktu	Kecepatan rata-rata (km/jam)		
	MC	LV	HV
07.00-08.00	32	29	32
08.00-09.00	31	28	0
09.00-10.00	31	30	27
10.00-11.00	32	26	22
11.00-12.00	28	24	29
12.00-13.00	28	25	25
13.00-14.00	28	25	28
14.00-15.00	32	28	0
15.00-16.00	29	29	23
16.00-17.00	31	28	19
17.00-18.00	28	28	26
18.00-19.00	29	25	27
Rata -Rata	30	27	21

Jalan Metro Tanjung Bunga (R13)



Waktu	Kecepatan rata-rata (km/jam)		
	MC	LV	HV
07.00-08.00	40	47	43
08.00-09.00	46	45	58
09.00-10.00	45	39	29
10.00-11.00	43	41	33
11.00-12.00	38	39	40
12.00-13.00	36	35	39
13.00-14.00	42	38	34
14.00-15.00	38	35	40
15.00-16.00	42	37	38
16.00-17.00	31	28	19
17.00-18.00	40	35	32
18.00-19.00	36	33	35
Rata -Rata	40	38	37

Jalan Metro Tanjung Bunga (R14)



**Lampiran 4. Data Kebisingan Lalu Lintas Jalan Metro Tanjung Bunga Titik R1 s/d R14**

Data Kebisingan Lalu Jalan Metro Tanjung Bunga (R1)						
Waktu	L1 (dB)	L10 (dB)	L50 (dB)	L90 (dB)	L99 (dB)	Laeq (dB)
07.00 - 08.00	88.56	77.95	70.08	62.32	57.19	78.03
08.00 - 09.00	85.72	77.57	70.56	62.58	55.85	77.08
09.00 - 10.00	84.73	75.35	69.45	63.71	59.18	76.02
10.00 - 11.00	90.22	78.51	71.06	64.10	58.18	79.30
11.00 - 12.00	83.29	76.10	69.97	63.28	57.57	75.70
12.00 - 13.00	83.61	75.71	69.28	63.20	58.95	75.44
13.00 - 14.00	83.44	76.01	69.51	64.62	59.99	75.50
14.00 - 15.00	91.34	78.34	70.66	65.10	64.09	79.55
15.00 - 16.00	89.17	77.48	70.96	65.42	61.63	78.79
16.00 - 17.00	87.31	80.96	72.36	67.90	64.71	78.79
17.00 - 18.00	88.53	80.17	74.50	70.41	68.97	80.53
18.00 - 19.00	86.48	79.45	73.64	69.58	66.02	79.16

Data Kebisingan Lalu Jalan Metro Tanjung Bunga (R2)						
Waktu	L1 (dB)	L10 (dB)	L50 (dB)	L90 (dB)	L99 (dB)	Laeq (dB)
07.00 - 08.00	91.14	82.19	74.19	68.36	62.49	81.48
08.00 - 09.00	86.40	79.07	72.78	66.68	61.12	78.64
09.00 - 10.00	88.76	78.72	66.12	62.48	55.02	75.85
10.00 - 11.00	85.29	79.56	69.10	62.30	56.68	76.06
11.00 - 12.00	77.76	74.32	65.56	59.35	53.83	70.81
12.00 - 13.00	88.80	82.71	68.54	62.81	54.24	77.25
13.00 - 14.00	86.45	75.28	68.03	61.64	55.56	75.95
14.00 - 15.00	85.99	76.31	69.68	63.26	57.34	76.69
15.00 - 16.00	89.05	83.86	75.48	66.62	58.95	81.32
16.00 - 17.00	86.80	78.05	71.89	67.45	62.78	78.30
17.00 - 18.00	88.04	78.87	71.75	66.96	62.04	78.76
18.00 - 19.00	90.61	83.52	69.96	66.77	61.49	78.84

Data Kebisingan Lalu Jalan Metro Tanjung Bunga (R3)						
Waktu	L1 (dB)	L10 (dB)	L50 (dB)	L90 (dB)	L99 (dB)	Laeq (dB)
07.00 - 08.00	82.35	76.66	72.39	68.43	64.44	76.68
08.00 - 09.00	83.07	76.35	71.37	67.29	63.23	76.40
09.00 - 10.00	79.23	73.90	68.51	63.92	60.82	73.12
10.00 - 11.00	79.19	73.90	68.88	63.92	59.45	73.31
11.00 - 12.00	80.55	73.29	67.70	63.60	61.08	73.23
12.00 - 13.00	82.68	72.30	67.44	62.28	57.10	73.99
13.00 - 14.00	78.75	72.00	66.80	62.23	58.55	71.94
14.00 - 15.00	80.64	73.31	67.37	62.87	59.52	73.07
15.00 - 16.00	79.35	73.48	68.35	63.41	60.39	73.08
16.00 - 17.00	79.27	73.76	69.17	65.98	63.63	73.51
17.00 - 18.00	79.32	9.63	69.38	65.65	63.79	73.66
18.00 - 19.00	83.46	3.67	71.64	65.46	62.87	76.72

Data Kebisingan Lalu Jalan Metro Tanjung Bunga (R4)						
Waktu	L1 (dB)	L10 (dB)	L50 (dB)	L90 (dB)	L99 (dB)	Laeq (dB)
07.00 - 08.00	84.65	77.17	70.60	65.31	61.98	76.65
08.00 - 09.00	82.24	75.36	69.26	63.60	60.62	74.84
09.00 - 10.00	83.49	75.19	69.08	63.72	59.89	75.28
10.00 - 11.00	83.49	74.88	68.53	61.34	57.15	74.96
11.00 - 12.00	84.20	74.18	68.16	61.88	58.43	75.05
12.00 - 13.00	80.53	74.39	68.64	62.22	57.57	73.75
13.00 - 14.00	83.17	74.00	68.15	60.83	56.29	74.61
14.00 - 15.00	86.79	75.77	68.91	63.10	59.34	76.60
15.00 - 16.00	84.74	75.94	69.38	62.85	57.69	75.98
16.00 - 17.00	84.62	77.13	71.41	66.79	62.24	77.09
17.00 - 18.00	85.44	77.36	71.98	67.87	62.99	77.77
18.00 - 19.00	85.01	77.02	71.46	67.36	64.06	77.29

Data Kebisingan Lalu Jalan Metro Tanjung Bunga (R5)						
Waktu	L1 (dB)	L10 (dB)	L50 (dB)	L90 (dB)	L99 (dB)	Laeq (dB)
07.00- 08.00	82.04	76.20	69.91	64.19	60.81	75.13
08.00- 09.00	81.08	75.97	69.94	65.01	62.06	74.73
09.00- 10.00	82.72	75.86	69.19	62.94	58.84	75.01
10.00- 11.00	85.26	75.66	69.13	64.26	61.12	76.06
11.00- 12.00	81.02	75.01	69.43	63.57	60.33	74.42
12.00- 13.00	85.87	75.75	69.96	64.11	60.46	76.80
13.00- 14.00	82.96	75.54	69.78	64.39	61.33	75.45
14.00- 15.00	82.04	76.20	69.91	64.19	60.81	75.13
15.00- 16.00	86.29	77.58	70.82	64.84	60.70	77.47
16.00- 17.00	85.00	76.98	71.93	68.21	63.68	77.55
17.00- 18.00	88.10	78.04	72.18	67.63	604.47	79.03
18.00- 19.00	83.65	75.79	70.83	65.58	62.36	76.34

Data Kebisingan Lalu Jalan Metro Tanjung Bunga (R6)						
Waktu	L1 (dB)	L10 (dB)	L50 (dB)	L90 (dB)	L99 (dB)	Laeq (dB)
07.00- 08.00	85.68	77.14	71.51	67.50	62.20	77.61
08.00- 09.00	82.91	75.78	68.66	65.18	61.13	74.79
09.00- 10.00	80.18	71.81	64.80	62.07	51.49	71.41
10.00- 11.00	77.55	70.63	63.47	59.95	54.52	69.52
11.00- 12.00	79.54	72.02	64.78	60.77	56.64	71.13
12.00- 13.00	79.48	70.80	64.28	60.54	56.22	70.82
13.00- 14.00	80.24	71.76	64.59	60.48	55.55	71.32
14.00- 15.00	80.78	71.45	64.50	61.76	57.44	71.50
15.00- 16.00	79.07	71.01	65.88	62.90	59.06	71.55
16.00- 17.00	80.21	73.97	68.73	66.26	62.23	73.67
17.00- 18.00	85.01	75.30	70.25	69.11	65.79	76.60
18.00- 19.00	81.42	74.77	68.30	65.50	61.21	73.94



Data Kebisingan Lalu Jalan Metro Tanjung Bunga (R7)						
Waktu	L1 (dB)	L10 (dB)	L50 (dB)	L90 (dB)	L99 (dB)	Laeq (dB)
07.00-08.00	88.56	77.95	70.08	62.32	57.19	78.03
08.00-09.00	85.72	77.57	70.56	62.58	55.85	77.08
09.00-10.00	84.73	75.35	69.45	63.71	59.18	76.02
10.00-11.00	90.22	78.51	71.06	64.10	58.18	79.30
11.00-12.00	83.29	76.10	69.97	63.28	57.57	75.70
12.00-13.00	83.61	75.71	69.28	63.20	58.95	75.44
13.00-14.00	83.44	76.01	69.51	64.62	59.99	75.50
14.00-15.00	91.34	78.34	70.66	65.10	64.09	79.55
15.00-16.00	89.17	77.48	70.96	65.42	61.63	78.79
16.00-17.00	87.31	80.96	72.36	67.90	64.71	78.79
17.00-18.00	88.53	80.17	74.50	70.41	68.97	80.53
18.00-19.00	86.48	79.45	73.64	69.58	66.02	79.16

Data Kebisingan Lalu Jalan Metro Tanjung Bunga (R8)						
Waktu	L1 (dB)	L10 (dB)	L50 (dB)	L90 (dB)	L99 (dB)	Laeq (dB)
07.00-08.00	73.08	66.65	64.17	60.49	72.64	78.03
08.00-09.00	73.35	66.54	63.72	60.05	72.30	77.08
09.00-10.00	72.54	66.02	59.61	55.89	71.41	76.02
10.00-11.00	71.20	64.46	57.78	55.36	69.98	79.30
11.00-12.00	71.97	64.68	57.27	55.15	70.59	75.70
12.00-13.00	71.34	64.41	57.10	54.97	70.26	75.44
13.00-14.00	73.18	65.58	61.69	57.07	72.93	75.50
14.00-15.00	72.43	66.66	62.90	58.96	71.99	79.55
15.00-16.00	72.79	65.97	62.30	57.83	72.73	78.79
16.00-17.00	73.08	67.35	61.44	56.21	72.65	78.79
17.00-18.00	76.33	71.33	65.72	61.80	76.64	80.53
18.00-19.00	75.26	70.49	65.18	63.29	74.92	79.16

Data Kebisingan Lalu Jalan Metro Tanjung Bunga (R9)						
Waktu	L1 (dB)	L10 (dB)	L50 (dB)	L90 (dB)	L99 (dB)	Laeq (dB)
07.00- 08.00	81.72	75.74	69.96	64.73	60.90	75.02
08.00- 09.00	79.42	74.71	69.08	63.85	60.38	73.53
09.00- 10.00	78.25	73.53	67.30	61.91	60.86	72.01
10.00- 11.00	81.48	73.53	67.26	60.55	59.29	73.37
11.00- 12.00	80.34	72.51	66.45	60.02	57.70	72.43
12.00- 13.00	81.28	71.95	64.73	58.80	58.29	71.85
13.00- 14.00	78.18	71.92	66.20	61.05	58.86	71.35
14.00- 15.00	77.33	70.98	65.44	59.65	57.27	70.55
15.00- 16.00	78.18	70.95	64.72	59.53	58.20	70.51
16.00- 17.00	76.35	72.07	67.29	62.96	57.72	71.19
17.00- 18.00	80.79	74.57	69.18	65.41	62.66	74.17
18.00- 19.00	80.47	71.30	66.42	60.50	59.16	72.46

Data Kebisingan Lalu Jalan Metro Tanjung Bunga (R10)						
Waktu	L1 (dB)	L10 (dB)	L50 (dB)	L90 (dB)	L99 (dB)	Laeq (dB)
07.00 - 08.00	83.84	74.09	67.14	61.40	56.65	74.32
08.00 - 09.00	82.39	74.08	68.12	63.78	63.42	74.26
09.00 - 10.00	82.05	74.09	67.73	62.76	61.59	73.89
10.00 - 11.00	83.84	74.09	67.14	61.40	56.65	74.32
11.00 - 12.00	84.60	73.67	67.29	61.58	61.58	74.73
12.00 - 13.00	79.93	72.28	66.44	60.73	59.54	72.24
13.00 - 14.00	78.10	71.95	66.81	61.08	59.29	71.66
14.00 - 15.00	78.42	71.93	66.70	60.20	59.13	71.74
15.00 - 16.00	77.00	70.93	65.40	60.10	58.86	70.38
16.00 - 17.00	80.74	72.73	67.05	61.79	61.64	72.93
17.00 - 18.00	80.84	74.17	68.62	64.31	63.22	73.87
18.00 - 19.00	80.01	73.80	68.37	63.76	63.69	73.38

Data Kebisingan Lalu Jalan Metro Tanjung Bunga (R11)						
Waktu	L1 (dB)	L10 (dB)	L50 (dB)	L90 (dB)	L99 (dB)	Laeq (dB)
07.00- 08.00	81.94	74.81	69.85	65.52	65.11	75.05
08.00- 09.00	84.38	75.17	69.54	64.48	63.84	75.92
09.00- 10.00	81.94	75.37	68.98	63.89	63.31	74.55
10.00- 11.00	81.65	75.16	69.51	64.26	62.35	74.73
11.00- 12.00	83.35	75.33	68.71	63.19	62.65	75.00
12.00- 13.00	84.85	74.81	68.10	62.59	62.12	75.30
13.00- 14.00	83.62	73.43	67.49	59.35	61.92	74.42
14.00- 15.00	81.44	73.69	68.07	63.41	62.76	73.82
15.00- 16.00	80.70	72.93	66.99	62.56	61.70	72.89
16.00- 17.00	83.80	73.42	68.12	64.22	64.27	74.86
17.00- 18.00	81.61	76.60	70.60	66.59	66.31	75.33
18.00- 19.00	81.92	75.59	70.38	66.81	66.57	75.34

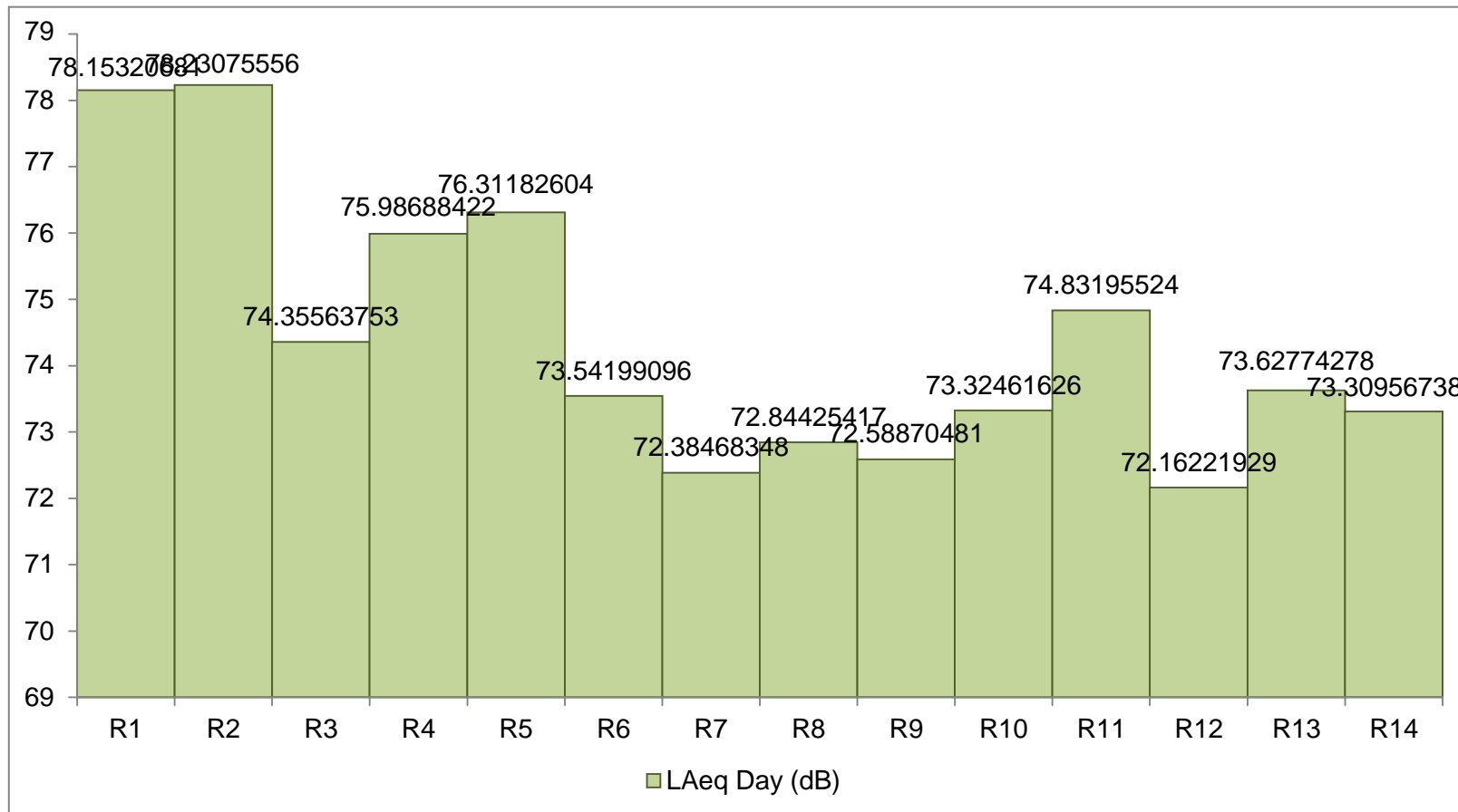
Data Kebisingan Lalu Jalan Metro Tanjung Bunga (R12)						
Waktu	L1 (dB)	L10 (dB)	L50 (dB)	L90 (dB)	L99 (dB)	Laeq (dB)
07.00- 08.00	78.20	72.01	65.51	57.32	56.41	70.96
08.00- 09.00	76.48	71.84	66.04	60.43	59.51	70.53
09.00- 10.00	77.41	71.81	66.60	59.85	59.11	71.25
10.00- 11.00	78.10	71.77	66.86	58.49	58.89	71.69
11.00- 12.00	82.66	73.66	67.20	61.25	59.65	73.85
12.00- 13.00	82.57	71.79	65.27	58.48	57.77	72.71
13.00- 14.00	81.93	71.70	59.06	58.55	58.15	68.90
14.00- 15.00	77.43	71.80	66.64	60.94	56.50	71.28
15.00- 16.00	78.88	71.18	65.67	59.19	58.27	71.35
16.00- 17.00	83.32	74.81	68.80	63.78	63.15	75.04
17.00- 18.00	80.11	73.61	68.01	62.77	61.46	73.21
18.00- 19.00	77.79	72.48	67.16	61.81	61.07	71.73

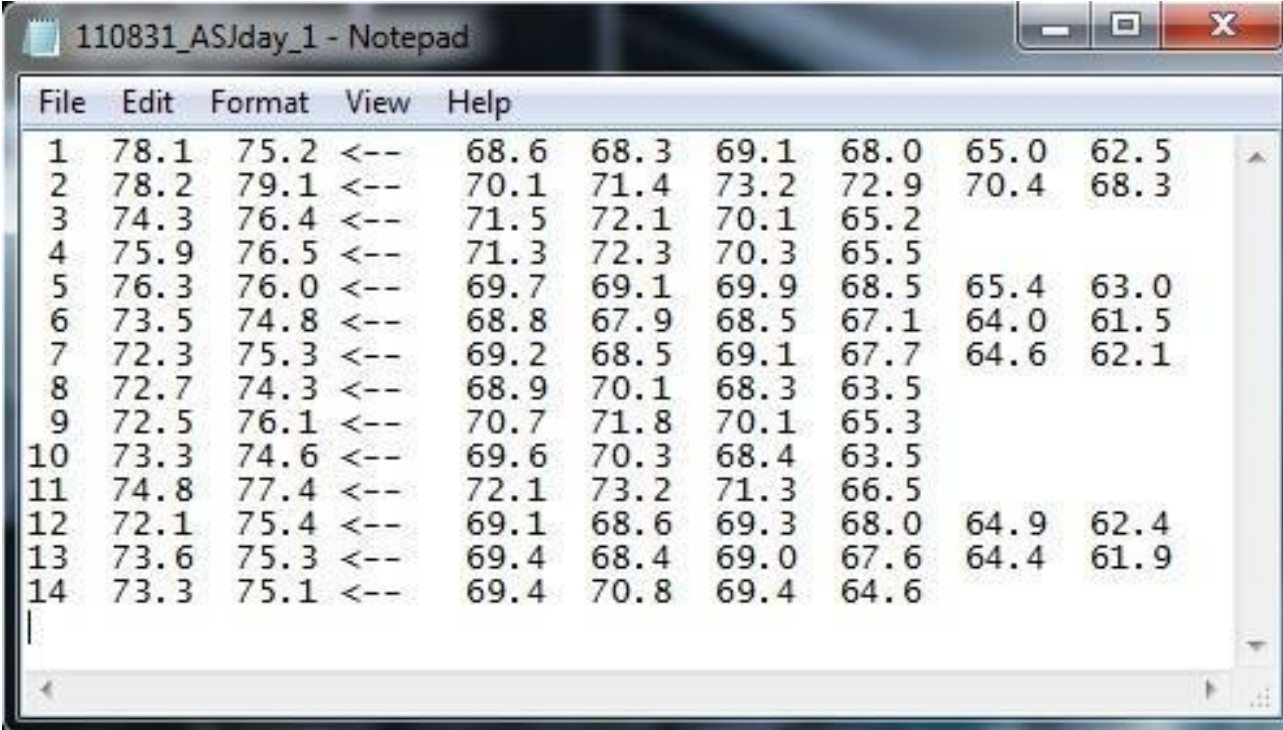
Data Kebisingan Lalu Jalan Metro Tanjung Bunga (R13)						
Waktu	L1 (dB)	L10 (dB)	L50 (dB)	L90 (dB)	L99 (dB)	Laeq (dB)
07.00-08.00	77.73	69.70	63.83	57.56	55.34	69.81
08.00-09.00	78.24	70.52	64.26	58.68	57.93	70.27
09.00-10.00	83.65	73.09	66.75	60.02	58.99	74.02
10.00-11.00	82.10	72.73	66.62	59.55	58.69	73.27
11.00-12.00	82.62	74.04	66.56	59.51	58.73	73.46
12.00-13.00	82.64	74.32	66.93	60.66	59.19	73.69
13.00-14.00	82.90	72.27	66.43	59.98	58.83	73.51
14.00-15.00	86.52	72.62	65.36	58.86	58.33	74.46
15.00-16.00	80.80	73.50	67.26	61.02	60.05	73.08
16.00-17.00	83.30	74.82	67.64	61.95	61.67	74.38
17.00-18.00	84.96	75.28	68.78	63.27	62.88	75.74
18.00-19.00	84.18	74.06	67.35	61.98	61.88	74.59

Data Kebisingan Lalu Jalan Metro Tanjung Bunga (R14)						
Waktu	L1 (dB)	L10 (dB)	L50 (dB)	L90 (dB)	L99 (dB)	Laeq (dB)
07.00-08.00	80.33	73.71	67.19	62.34	62.27	72.84
08.00-09.00	80.42	74.09	67.53	62.50	60.94	73.07
09.00-10.00	83.63	73.80	66.33	58.61	57.63	73.77
10.00-11.00	80.29	73.00	65.44	57.66	56.56	71.82
11.00-12.00	77.63	70.73	64.28	57.75	56.74	70.02
12.00-13.00	78.41	70.71	64.85	55.70	57.12	70.68
13.00-14.00	79.69	72.00	64.87	57.28	52.59	71.24
14.00-15.00	80.96	72.52	65.23	59.06	58.07	72.00
15.00-16.00	80.65	73.33	67.22	60.89	59.83	73.00
16.00-17.00	82.04	75.09	69.60	64.44	62.53	74.95
17.00-18.00	84.67	75.02	70.34	66.20	64.39	76.50
18.00-19.00	81.52	74.95	70.11	65.24	64.67	75.02

Lampiran 5. Tabel Rekap Jumlah Klakson Pada Ruas Jalan Metro Tanjung Bunga Titik R1 s/d R14

No.	Titik Pengamatan	Laeq,day (dB)	Volume (kend/jam)			Kecepatan Rata-rata (kend/jam)			Jumlah Klakson			Jumlah Klakson		
			MC	LV	HV	MC	LV	HV	MC	LV	HV	MC	LV	HV
1	R1	78.15	675	437	2	33	29	26	316	136	2	1896	816	12
2	R2	78.23	607	533	8	37	32	29	351	164	8	2106	984	48
3	R3	74.36	737	444	16	32	29	28	324	119	16	1944	714	96
4	R4	75.99	575	508	21	36	32	26	322	138	21	1932	828	126
5	R5	76.31	657	475	17	39	37	35	313	108	17	1878	648	102
6	R6	73.54	497	423	12	38	34	28	336	141	12	2016	846	72
7	R7	72.38	601	421	12	39	40	28	318	194	12	1908	1164	72
8	R8	72.77	505	355	10	36	35	30	343	142	10	2058	852	60
9	R9	72.59	758	464	12	36	35	30	378	160	12	2268	960	72
10	R10	73.32	467	284	15	35	34	29	355	196	15	2130	1176	90
11	R11	74.83	784	325	22	26	25	28	435	199	22	2610	1194	132
12	R12	72.16	623	338	9	33	31	22	325	134	9	1950	804	54
13	R13	73.63	614	283	10	30	27	21	320	131	10	1920	786	60
14	R14	73.31	681	168	16	40	38	37	315	128	16	1890	768	96

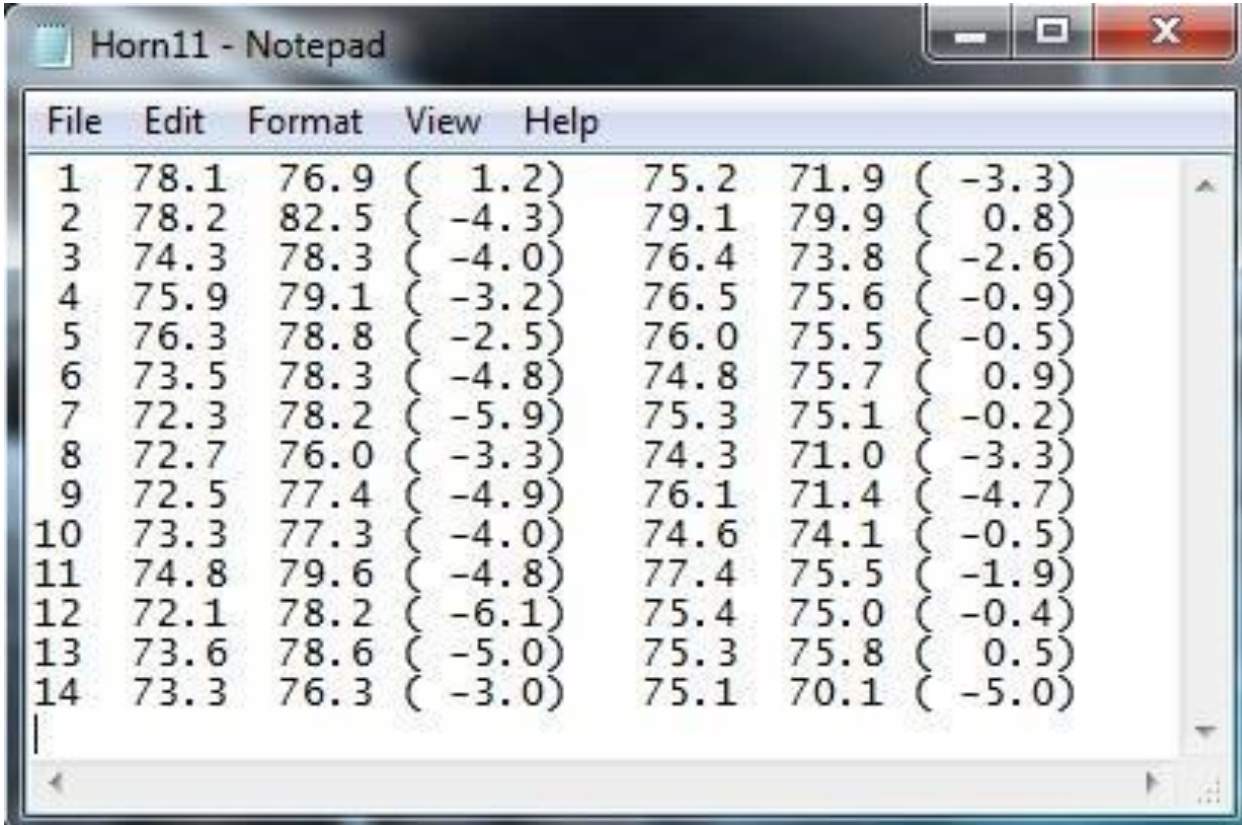
**Lampiran 6. Grafik Rekap Jumlah Klakson Pada Ruas Jalan Metro Tanjung Bunga Titik R1 s/d R14**

**Lampiran 7. Data Output Model Prediksi ASJ-RTN 2008 Pada *Fortran 95*****a. Data tingkat kebisingan prediksi model ASJ-RTN 2008 Tanpa Suara klakson**

The image shows a screenshot of a Notepad window titled "110831\_ASJday\_1 - Notepad". The window contains a table with 14 rows and 10 columns. The first column contains row numbers from 1 to 14. The second column contains values ranging from 72.1 to 78.2. The third column contains values ranging from 74.3 to 77.4. The fourth column contains values ranging from 68.6 to 72.1. The fifth column contains values ranging from 68.3 to 71.8. The sixth column contains values ranging from 69.1 to 73.2. The seventh column contains values ranging from 68.0 to 72.9. The eighth column contains values ranging from 65.0 to 67.7. The ninth column contains values ranging from 64.4 to 65.4. The tenth column contains values ranging from 61.5 to 62.5. The table is displayed in a simple text format with no headers or footers.

1	78.1	75.2	<--	68.6	68.3	69.1	68.0	65.0	62.5
2	78.2	79.1	<--	70.1	71.4	73.2	72.9	70.4	68.3
3	74.3	76.4	<--	71.5	72.1	70.1	65.2		
4	75.9	76.5	<--	71.3	72.3	70.3	65.5		
5	76.3	76.0	<--	69.7	69.1	69.9	68.5	65.4	63.0
6	73.5	74.8	<--	68.8	67.9	68.5	67.1	64.0	61.5
7	72.3	75.3	<--	69.2	68.5	69.1	67.7	64.6	62.1
8	72.7	74.3	<--	68.9	70.1	68.3	63.5		
9	72.5	76.1	<--	70.7	71.8	70.1	65.3		
10	73.3	74.6	<--	69.6	70.3	68.4	63.5		
11	74.8	77.4	<--	72.1	73.2	71.3	66.5		
12	72.1	75.4	<--	69.1	68.6	69.3	68.0	64.9	62.4
13	73.6	75.3	<--	69.4	68.4	69.0	67.6	64.4	61.9
14	73.3	75.1	<--	69.4	70.8	69.4	64.6		

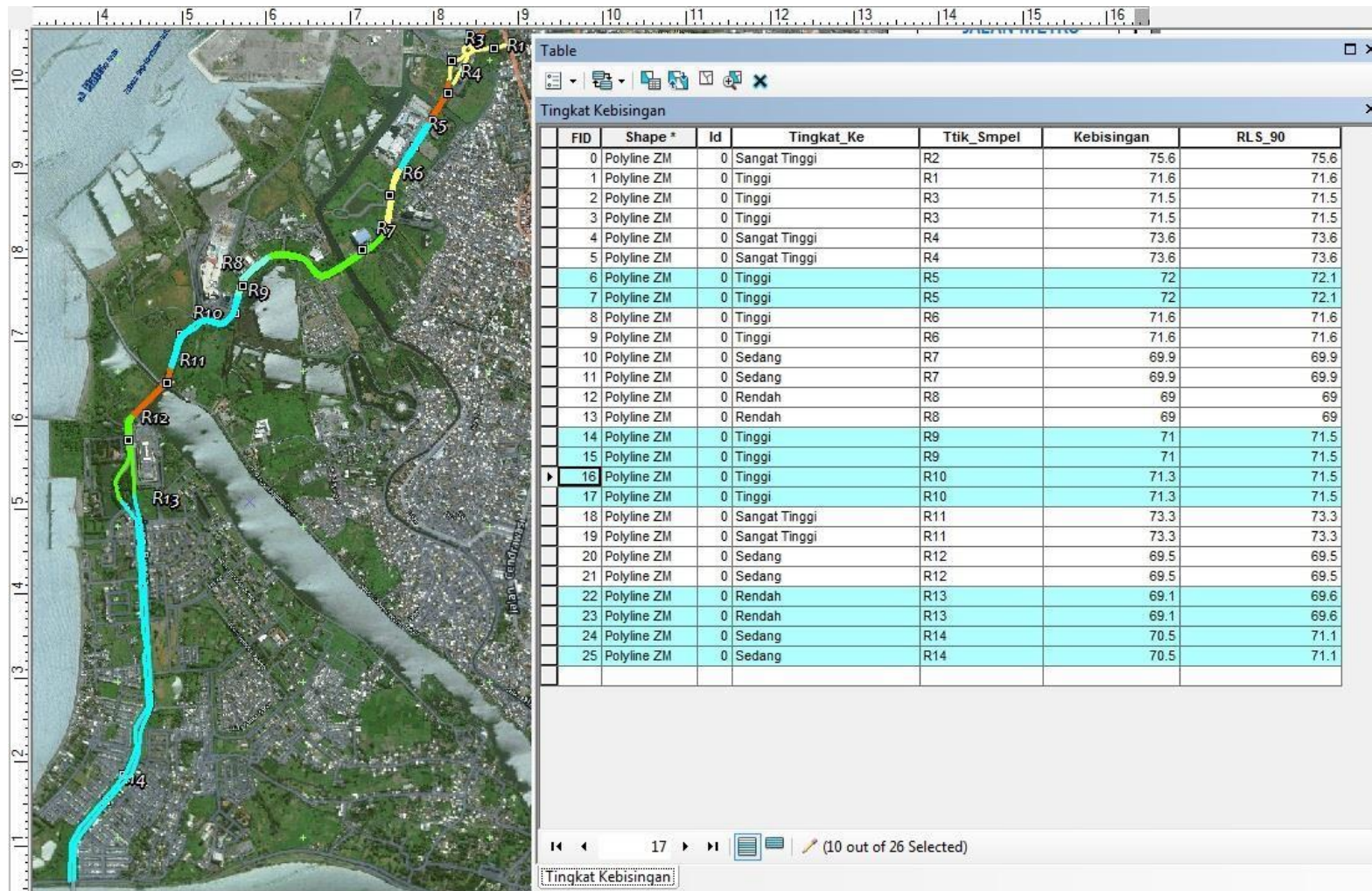
b. Data tingkat kebisingan prediksi model ASJ-RTN 2008 dengan Suara klakson



File	Edit	Format	View	Help						
1	78.1	76.9	( 1.2)	75.2	71.9	( -3.3)				
2	78.2	82.5	( -4.3)	79.1	79.9	( 0.8)				
3	74.3	78.3	( -4.0)	76.4	73.8	( -2.6)				
4	75.9	79.1	( -3.2)	76.5	75.6	( -0.9)				
5	76.3	78.8	( -2.5)	76.0	75.5	( -0.5)				
6	73.5	78.3	( -4.8)	74.8	75.7	( 0.9)				
7	72.3	78.2	( -5.9)	75.3	75.1	( -0.2)				
8	72.7	76.0	( -3.3)	74.3	71.0	( -3.3)				
9	72.5	77.4	( -4.9)	76.1	71.4	( -4.7)				
10	73.3	77.3	( -4.0)	74.6	74.1	( -0.5)				
11	74.8	79.6	( -4.8)	77.4	75.5	( -1.9)				
12	72.1	78.2	( -6.1)	75.4	75.0	( -0.4)				
13	73.6	78.6	( -5.0)	75.3	75.8	( 0.5)				
14	73.3	76.3	( -3.0)	75.1	70.1	( -5.0)				



### Lampiran 8. Data Output Model Prediksi RLS90 ArcGIS 10.6.1



### Lampiran 9. Pengujian Validasi Hasil Prediksi

- a. Perbandingan nilai kebisingan hasil pengukuran dan kebisingan hasil prediksi ASJ-RTN 2008 untuk lingkungan jalan utama-komersial tanpa suara klakson (steady)

No	Titik Pengamatan	Pengukuran Langsung (dB) (X)	Prediksi (dB) (Y)	X <sup>2</sup>	Y <sup>2</sup>	XY	(X-Y)	(X-Y) <sup>2</sup>
1	titik 01	78.15	75.2	6107.42	5655.0	5876.9	3.0	8.7
2	titik 02	78.23	79.1	6119.93	6256.8	6188.0	-0.9	0.8
3	titik 03	74.36	76.4	5529.41	5837.0	5681.1	-2.0	4.2
4	titik 04	75.99	76.5	5774.48	5852.3	5813.2	-0.5	0.3
5	titik 05	76.31	76	5823.22	5776.0	5799.6	0.3	0.1
6	titik 06	73.54	74.8	5408.13	5595.0	5500.8	-1.3	1.6
7	titik 07	72.38	75.3	5238.86	5670.1	5450.2	-2.9	8.5
8	titik 08	72.38	74.3	5239.57	5520.5	5378.2	-1.9	3.7
9	titik 09	72.59	76.1	5269.31	5791.2	5524.1	-3.5	12.3
10	titik 10	73.32	74.6	5375.82	5565.2	5469.7	-1.3	1.6
11	titik 11	74.83	77.4	5599.53	5990.8	5791.8	-2.6	6.6
12	titik 12	72.16	75.4	5207.07	5685.2	5440.9	-3.2	10.5
13	titik 13	73.63	75.3	5421.38	5670.1	5544.3	-1.7	2.8
14	titik 14	73.31	75.1	5374.36	5640.0	5505.6	-1.8	3.2
Jumlah		1041.2	1061.5	77488.5	80505.1	73087.5	-20.3	64.8
Rata - Rata		74.4	75.8					

Korelasi Pearson

$$\begin{aligned}
 r &= \frac{n \cdot \Sigma XY - \Sigma X \cdot \Sigma Y}{\sqrt{\{n \cdot \Sigma X^2 - (\Sigma X)^2\} \cdot \{n \cdot \Sigma Y^2 - (\Sigma Y)^2\}}} \\
 &= \frac{\frac{1169399.841}{155749.8177} \quad - \quad \frac{1105218}{161298.9}}{\frac{64182.11261}{25122269596}} \\
 &= \frac{64182.11261}{158500.0618} \\
 &= 0.4
 \end{aligned}$$

$$\begin{aligned}
 \text{RMSE} &= \frac{\sqrt{\Sigma(X-Y)^2}}{n} \\
 &= \frac{64.8}{16} \\
 &= 4.050810211 \\
 &= 2.0
 \end{aligned}$$

**b. Perbandingan nilai kebisingan hasil pengukuran dan kebisingan hasil prediksi ASJ-RTN 2008 untuk lingkungan jalan utama-komersial dengan suara klakson (unsteady)**

No	Titik Pengamatan	Pengukuran Langsung (dB) (X)	Prediksi (dB) (Y)	X <sup>2</sup>	Y <sup>2</sup>	XY	(X-Y)	(X-Y) <sup>2</sup>
1	titik 01	78.15	76.9	6107.42	5913.6	6009.7	1.3	1.6
2	titik 02	78.23	82.5	6119.93	6806.3	6454.0	-4.3	18.2
3	titik 03	74.36	78.3	5529.41	6130.9	5822.4	-3.9	15.5
4	titik 04	75.99	79.1	5774.48	6256.8	6010.8	-3.1	9.7
5	titik 05	76.31	78.8	5823.22	6209.4	6013.2	-2.5	6.2
6	titik 06	73.54	78.3	5408.13	6130.9	5758.2	-4.8	22.7
7	titik 07	72.38	78.2	5238.86	6115.2	5660.1	-5.8	33.9
8	titik 08	72.38	76	5239.57	5776.0	5501.2	-3.6	13.1
9	titik 09	72.59	77.4	5269.31	5990.8	5618.5	-4.8	23.1
10	titik 10	73.32	77.3	5375.82	5975.3	5667.6	-4.0	15.8
11	titik 11	74.83	79.6	5599.53	6336.2	5956.5	-4.8	22.8
12	titik 12	72.16	78.2	5207.07	6115.2	5642.9	-6.0	36.5
13	titik 13	73.63	78.6	5421.38	6178.0	5787.3	-5.0	24.7
14	titik 14	73.31	76.3	5374.36	5821.7	5593.6	-3.0	8.9
Jumlah		1041.2	1095.5	77488.5	85756.2	75486.3	-54.3	252.6
Rata - Rata		74.4	78.3					

Korelasi Pearson

$$\begin{aligned}
 r &= \frac{n \cdot \Sigma XY - \Sigma X \cdot \Sigma Y}{\sqrt{\{n \cdot \Sigma X^2 - (\Sigma X)^2\} \cdot \{n \cdot \Sigma Y^2 - (\Sigma Y)^2\}}} \\
 &= \frac{1207780.805}{155749.8177} \times \frac{1140618}{171979.4} \\
 &= \frac{67162.79156}{26785764869} \\
 &= \frac{67162.79156}{163663.5722} \\
 &= 0.4
 \end{aligned}$$

$$\begin{aligned}
 \text{RMSE} &= \frac{\sqrt{\Sigma(X-Y)^2}}{n} \\
 &= \frac{252.6}{16} \\
 &= 15.79015258 \\
 &= 4.0
 \end{aligned}$$

**Lampiran 10. Proyeksi Pertumbuhan Kendaraan dan Proyeksi Tingkat Kebisingan (n = 10 Tahun)**

**a. Proyeksi Pertumbuhan Kendaraan (n = 10 Tahun)**

No.	Titik Pengamatan	Volume Kendaraan Rata-rata (Eksisting)		
		MC	LV	HV
1	R1	675	437	2
2	R2	607	533	8
3	R3	737	444	16
4	R4	575	508	21
5	R5	657	475	17
6	R6	497	423	12
7	R7	601	421	12
8	R8	505	355	10
9	R9	758	464	12
10	R10	467	284	15
11	R11	784	325	22
12	R12	623	338	9
13	R13	614	283	10
14	R14	681	168	16

No.	Titik Pengamatan	Volume Kendaraan Rata-rata (n = 10 Tahun)		
		MC	LV	HV
1	R1	1404	909	4
2	R2	1263	1109	17

3	R3	1533	924	33
4	R4	1196	1057	44
5	R5	1367	988	35
6	R6	1034	880	25
7	R7	1250	876	25
8	R8	1051	739	21
9	R9	1577	965	25
10	R10	971	591	31
11	R11	1631	676	46
12	R12	1296	703	19
13	R13	1277	589	21
14	R14	1417	349	33

**b. Proyeksi Tingkat Kebisingan (n = 10 Tahun) dengan *Trend* Persamaan Regresi Linear**

Model	Variables Entered	Variables Removed	Method
1	Kecepatan, Kendaraan_Berat, Kendaraan_Ringan, Sepeda_motor <sup>b</sup>		Enter

a. Dependent Variable: Tingkat\_Kebisingan

b. All requested variables entered.

**Model Summary**

Model	R	R Square	Adjusted R Square	Std. Error of the Estimate
1	.562 <sup>a</sup>	.316	.012	2.02228

a. Predictors: (Constant), Kecepatan, Kendaraan\_Berat, Kendaraan\_Ringan, Sepeda\_motor

**ANOVA<sup>a</sup>**

Model		Sum of Squares	df	Mean Square	F	Sig.
1	Regression	17.006	4	4.251	1.040	.438 <sup>b</sup>
	Residual	36.806	9	4.090		
	Total	53.812	13			

a. Dependent Variable: Tingkat\_Kebisingan

b. Predictors: (Constant), Kecepatan, Kendaraan\_Berat, Kendaraan\_Ringan, Sepeda\_motor

**Coefficients<sup>a</sup>**

Model		Unstandardized Coefficients		Standardized Coefficients	t	Sig.
		B	Std. Error	Beta		
1	(Constant)	69.914	7.132		9.803	.000
	Sepeda_motor	.003	.006	.141	.481	.642
	Kendaraan_Ringan	.010	.006	.514	1.842	.099
	Kendaraan_Berat	-.046	.109	-.119	-.419	.685



Kecepatan					
		-.025	.156	-.045	-.158
					.878

a. Dependent Variable: Tingkat\_Kebisingan

#### Correlations

		Sepeda_motor	Kendaraan_Ringan	Kendaraan_Berat	Kecepatan
Sepeda_motor	Pearson Correlation	1	.055	.196	-.248
	Sig. (1-tailed)		.426	.251	.196
	N	14	14	14	14
Kendaraan_Ringan	Pearson Correlation	.055	1	-.107	.043
	Sig. (1-tailed)	.426		.357	.442
	N	14	14	14	14
Kendaraan_Berat	Pearson Correlation	.196	-.107	1	.043
	Sig. (1-tailed)	.251	.357		.442
	N	14	14	14	14
Kecepatan	Pearson Correlation	-.248	.043	.043	1
	Sig. (1-tailed)	.196	.442	.442	
	N	14	14	14	14