

DAFTAR PUSTAKA

- Ayunarita S. 2017. Studi Pola Arus, Pasang Surut Dan Gelombang Di Perairan Pantai Pelawan Desa Pangke Kecamatan Meral Kabupaten Karimun Provinsi Kepulauan Riau. Fakultas Perikanan dan Kelautan. Universitas Riau: Pekanbaru.
- Beer, M. (1997). Plasma Physics Princenton Laboratory. New Jersey Princenton University.
- CERC. (1984). Shore Protection Manual Volume I. US Army Coastal Engineering Research Center: Washington.
- Data Statistik Perikanan, S. D. (2011). Statistik Perikanan Tanggap Indonesia, Vol. 11, No. 1, 2010. Kementerian Kelautan dan Perikanan, Direktorat Jendral Perikanan Tangkap, 30
- Delafontaine, M. 2016. *Experimental study on the performance of different wave absorbers in a wave flume*. [Disertasi]. Belgia: Universiteit Gent.
- Dhanista, W, L., 2017, Gelombang Laut. Online. <https://www.its.ac.id/tkelautan/gelombang-laut/>. [10 Mei 2022]
- Jasin, MI., Yosua, ARDM., 2015, Analisa Karakteristik Gelombang Di Pantai Bulu Rerer Kecamatan Kombi Kabupaten Minahasa. Jurnal Sipil Statik. Vol 3. (1) ISSN: 2337-6732.
- Kurniawan, R., 2012, Karakteristik Gelombang Laut dan Daerah Rawan Gelombang Tinggi Di Perairan Indonesia. [Tesis] Depok: Universitas Indonesia.
- Pramono, D., 2005, Budaya Bahari. In D. Pramono, Budaya Bahari (pp. 120- 122). Jakarta: Gramedia Pustaka Utama.
- Roza, E., 2017, Maritim Indonesia, Kemewahan Yang Luar Biasa. Kementerian Kelautan dan Perikanan Republik Indonesia, p. 1.
- Siombo, M., 2009, Pengaruh Metode Penyuluhan dan Motivasi Nelayan Terhadap Pengetahuan Tentang Penangkapan Ikan Ramah Lingkungan (Eksperimen Pada Nelayan di Tempat Pelelangan Ikan (TPI) Muara Angke, Jakarta Utara 2008). Sinopsis Disertasi Program Pascasarjana, UNJ, 2.
- Straub, L.G.; Bowers, C.E. & Herbich, J.B. (1957). Laboratory tests of permeable wave absorbers. *Proceedings of the 6th Conference on Coastal Engineering*, pp. 729-742.
- Sutedjo, A., Pradana, S., 2018, Perairan Laut. Kementerian Pendidikan dan Kebudayaan Riset, Teknologi dan Pendidikan Tinggi. RISTEKDIKTI.

Sutirto, Trisnoyuwono, D. 2014. Gelombang Dan Arus Laut Lepas. Graha Ilmu: Yogyakarta.

Triatmodjo, B., 1999, *Teknik Pantai*, Beta Offset, Yogyakarta.

Triatmodjo B., 2011, *Perencanaan Bangunan Pantai*, Beta Offset, Yogyakarta.

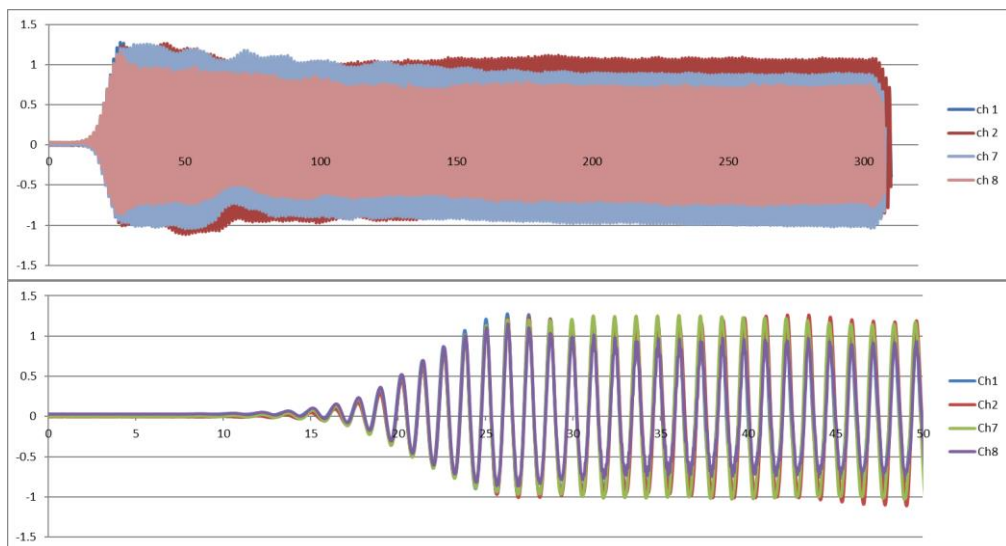
Wakkary AC, Ihsan MJ, Dundu A.K.T. 2017. Studi Karakteristik Gelombang Pada Daerah Pantai Desa Kalinaung KAB. Minahasa Utara. Jurnal Sipil Statik. Vol. 5(3): 167-174 ISSN: 2337-6732

Yuwono, N. (1982). *Teknik Pantai*. Teknik Sipil UGM: Yogyakarta.

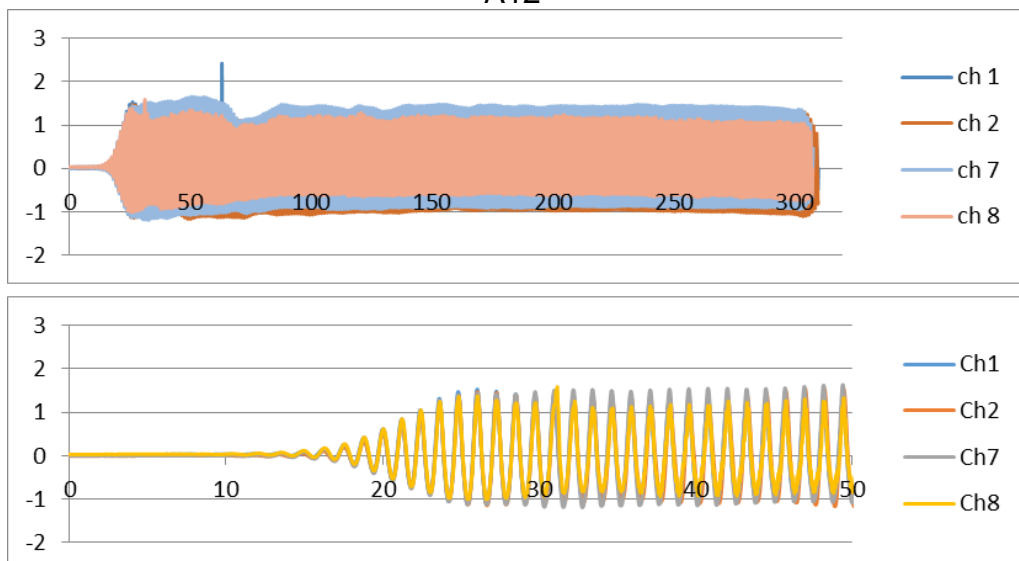
LAMPIRAN

1. Grafik Fluktuasi Muka Air

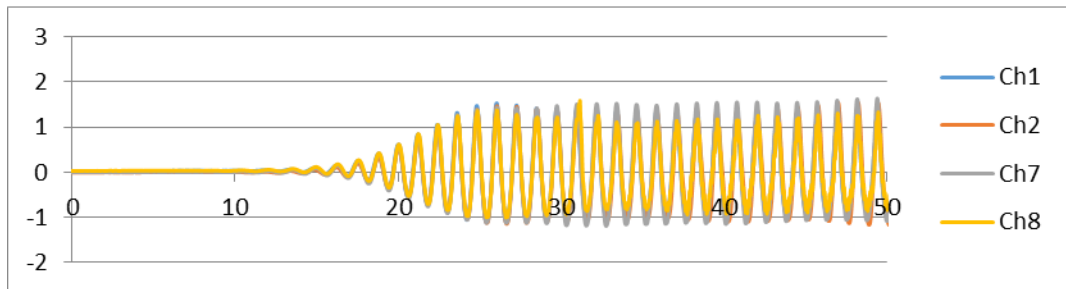
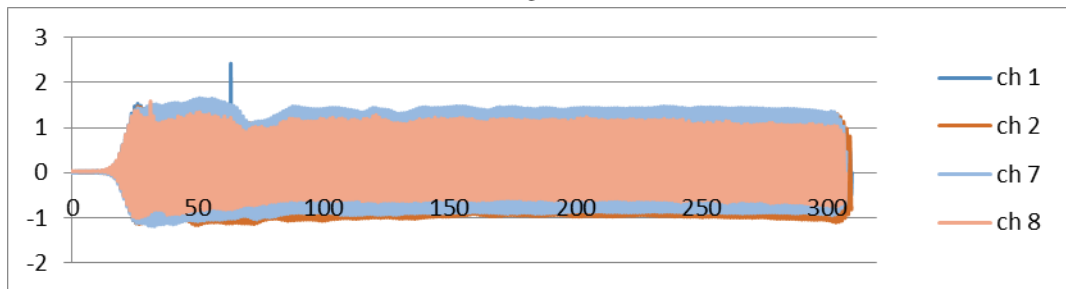
A11



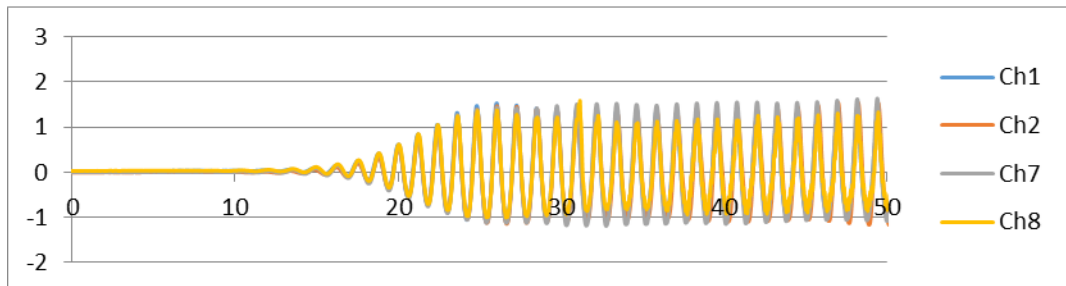
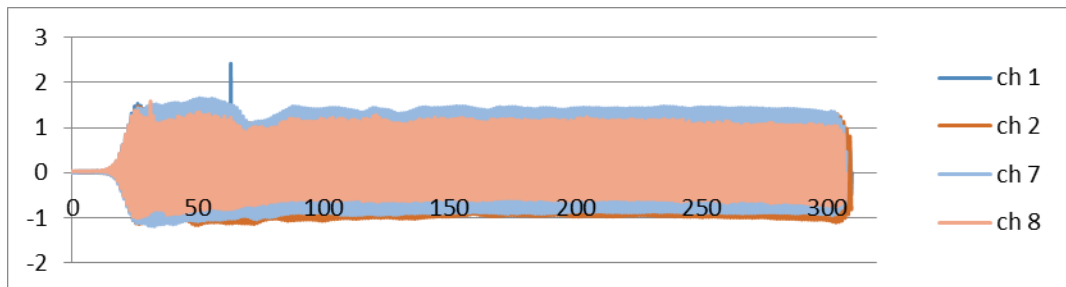
A12



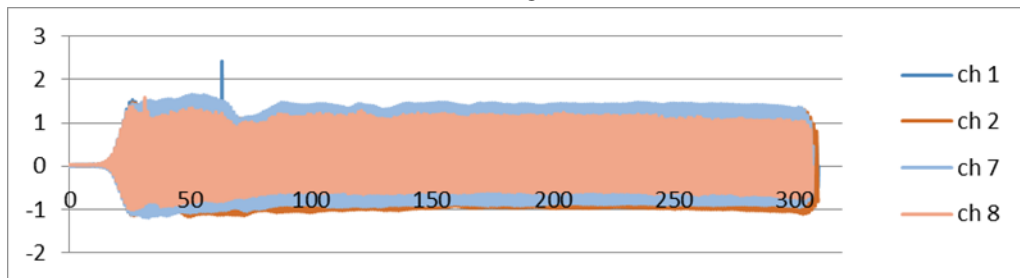
A13



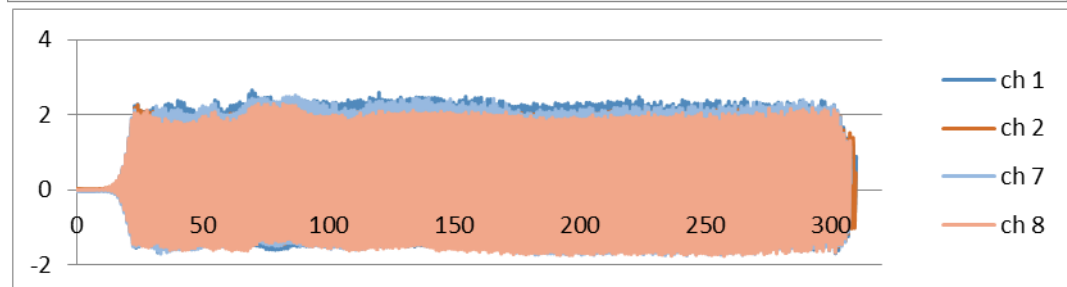
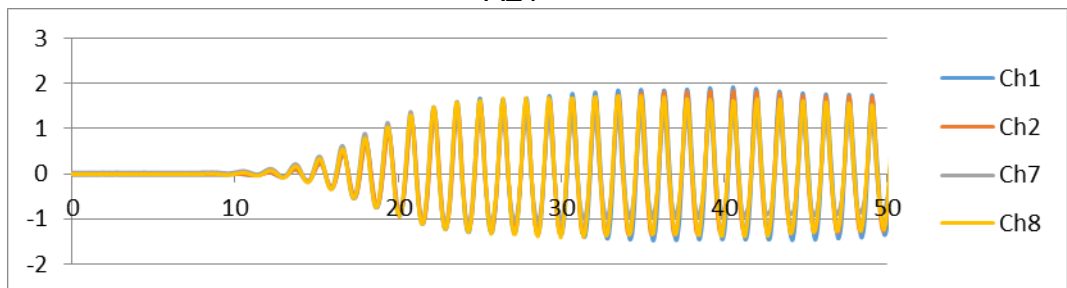
A14



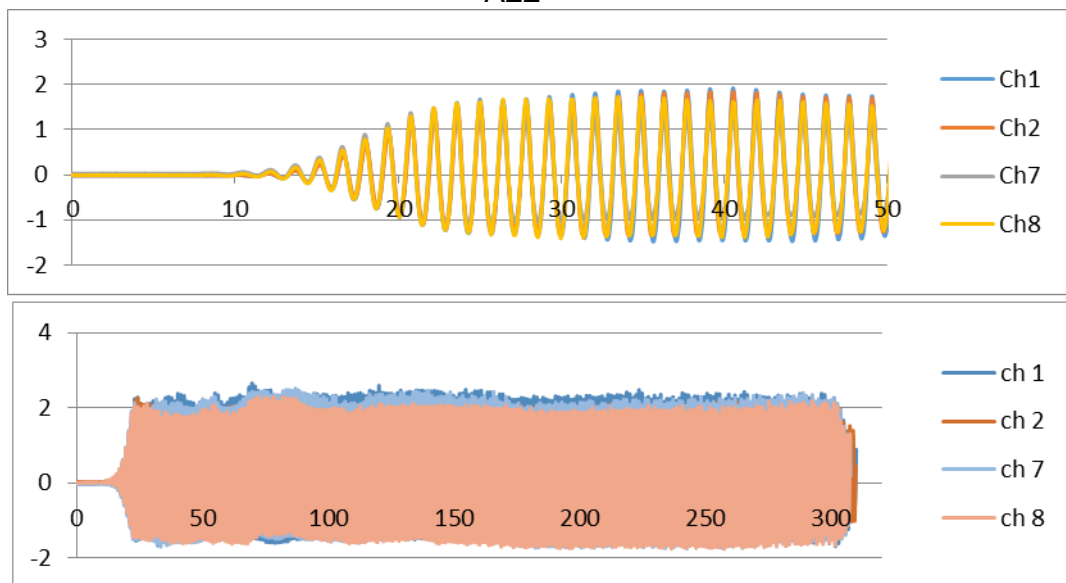
A15



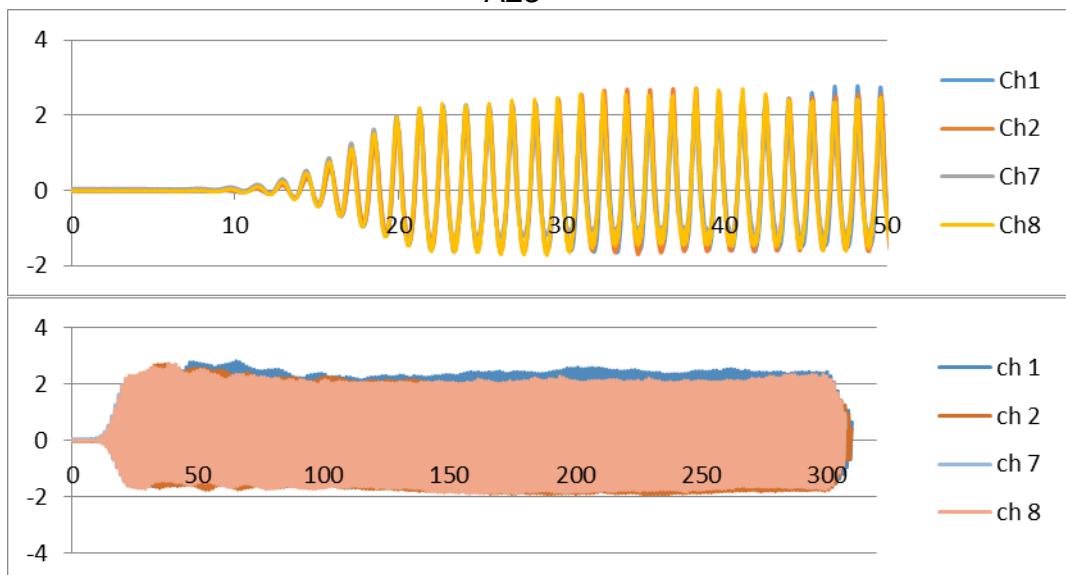
A21



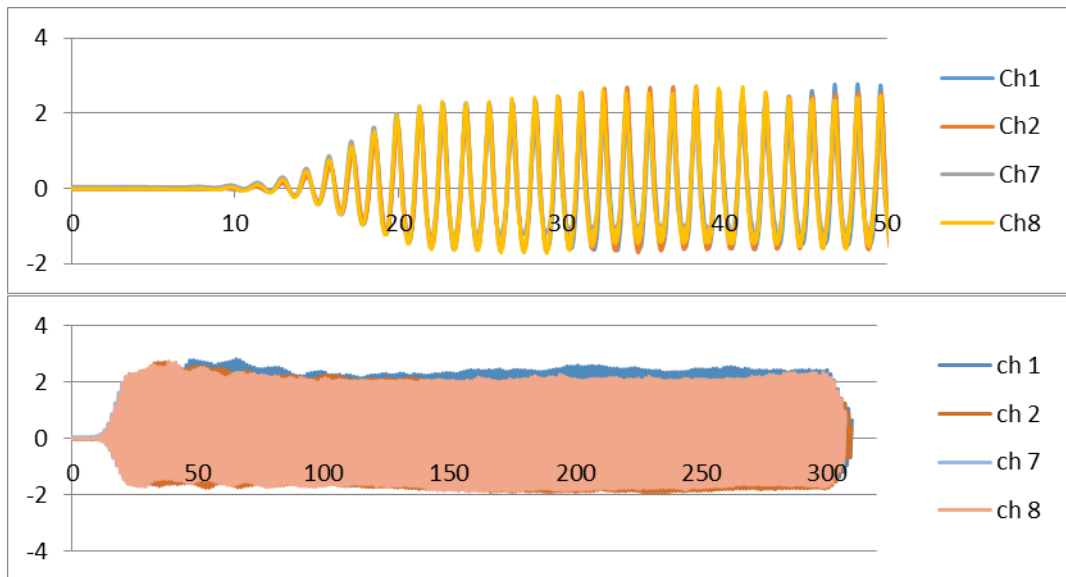
A22



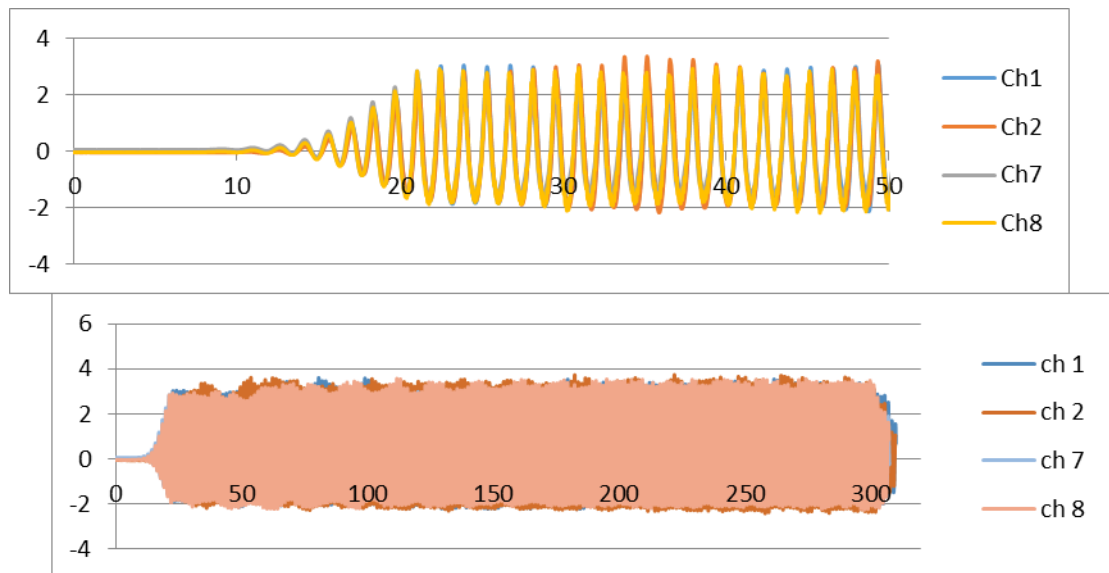
A23



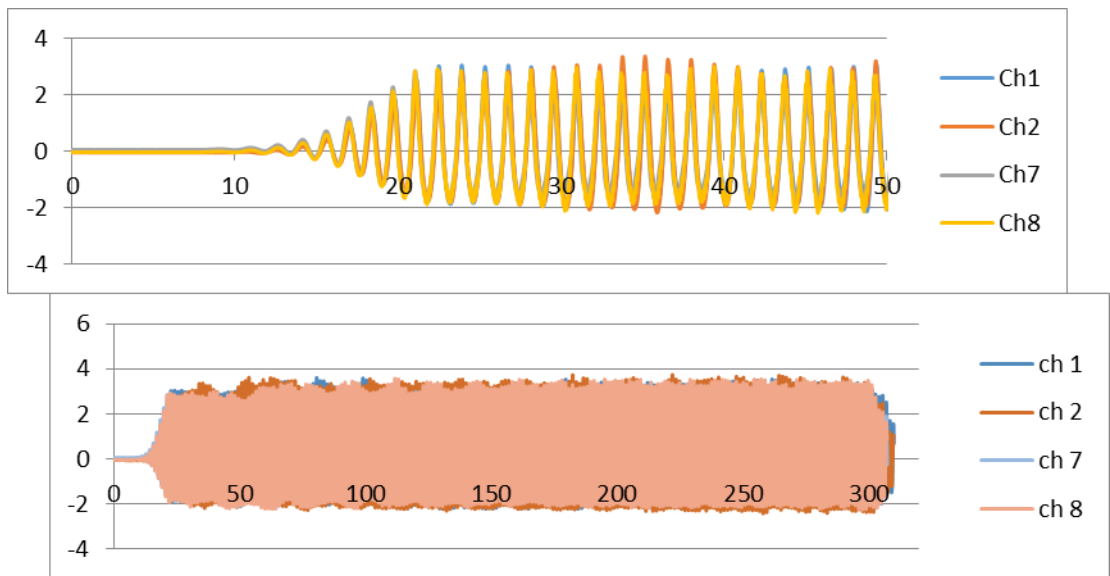
A24



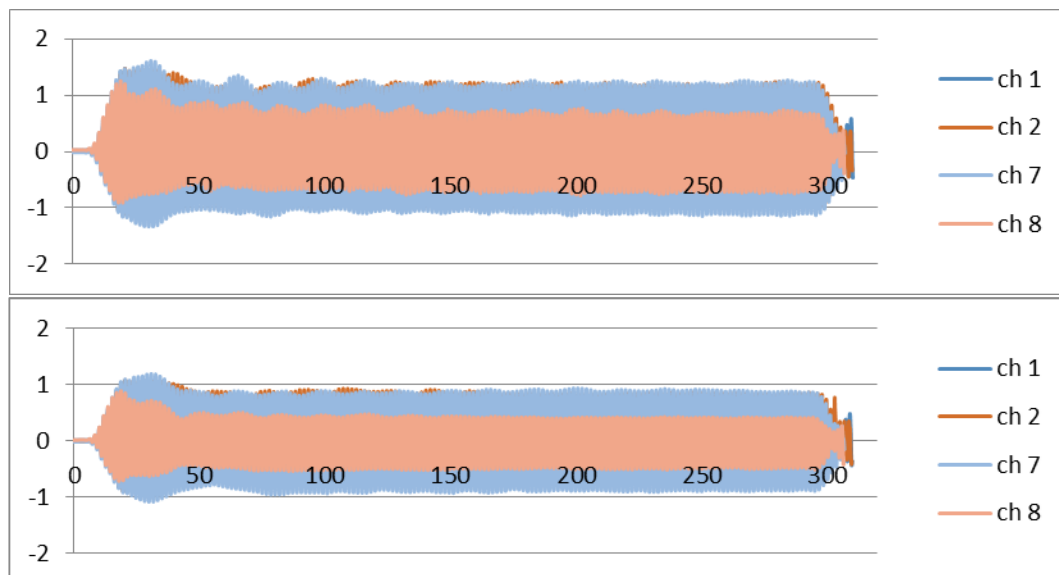
A25



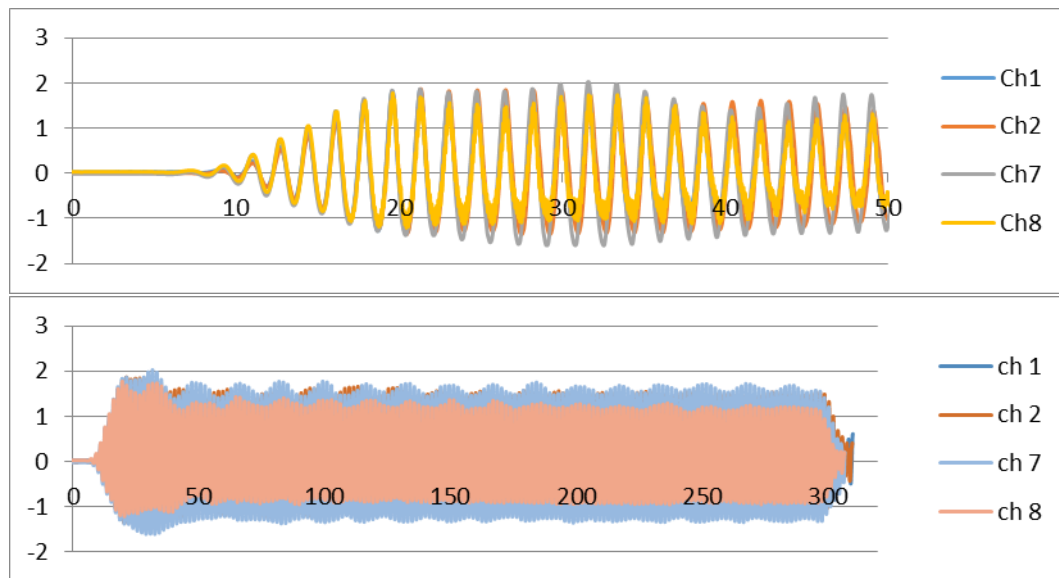
A31



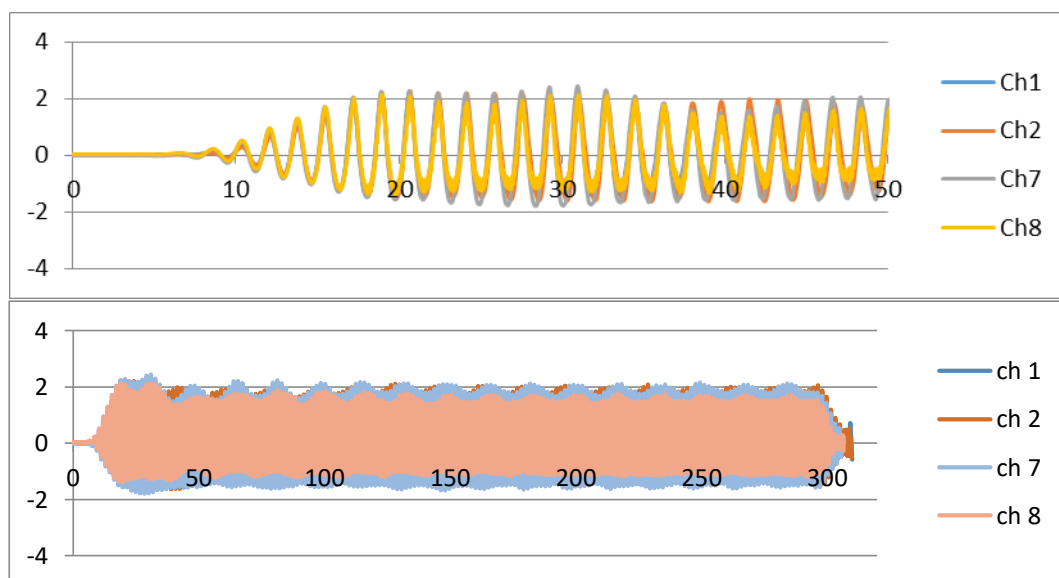
A32



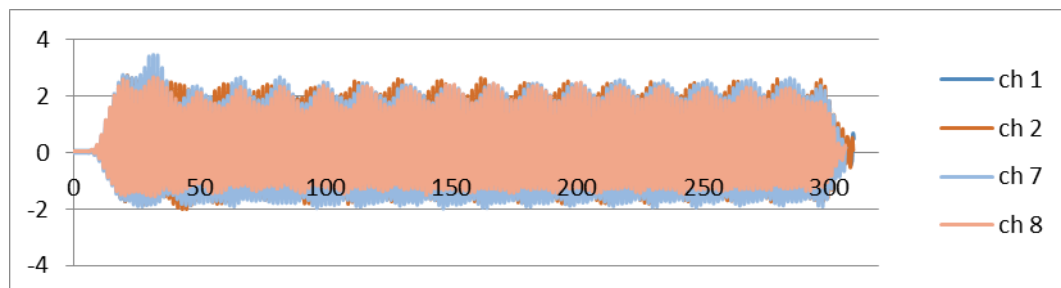
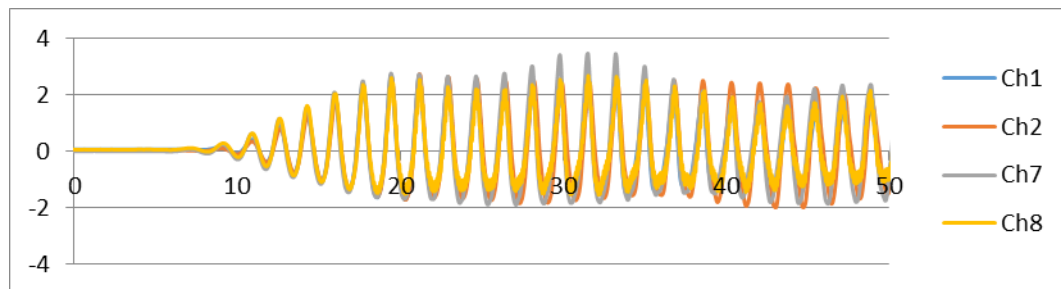
A33



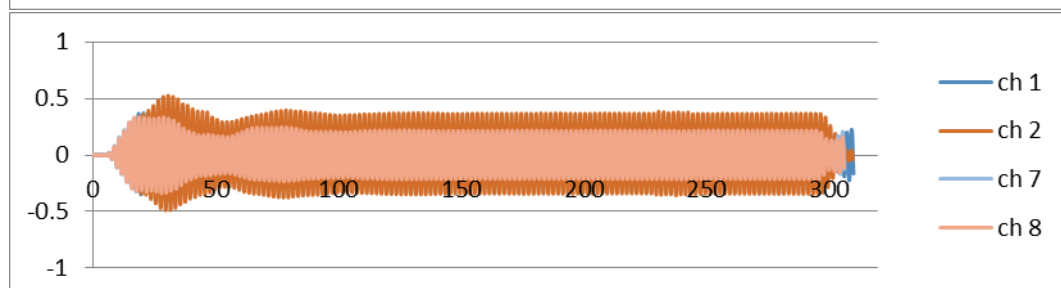
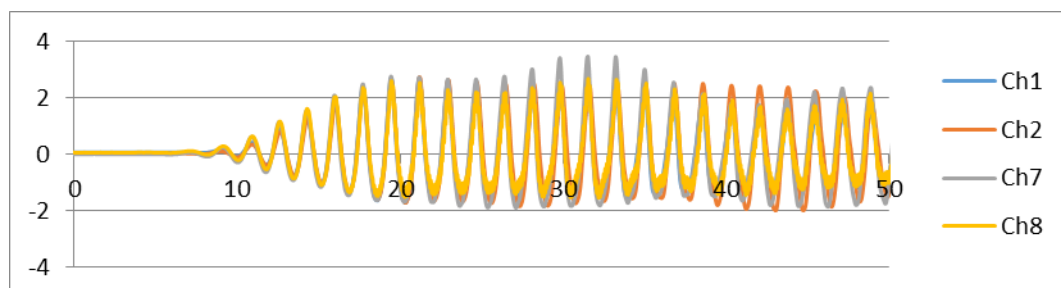
A34



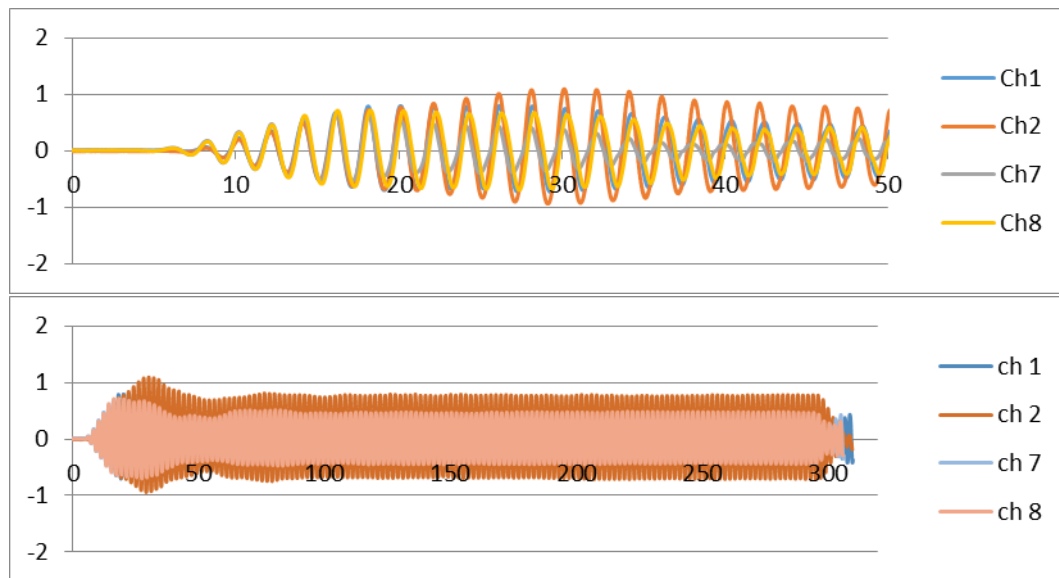
A35



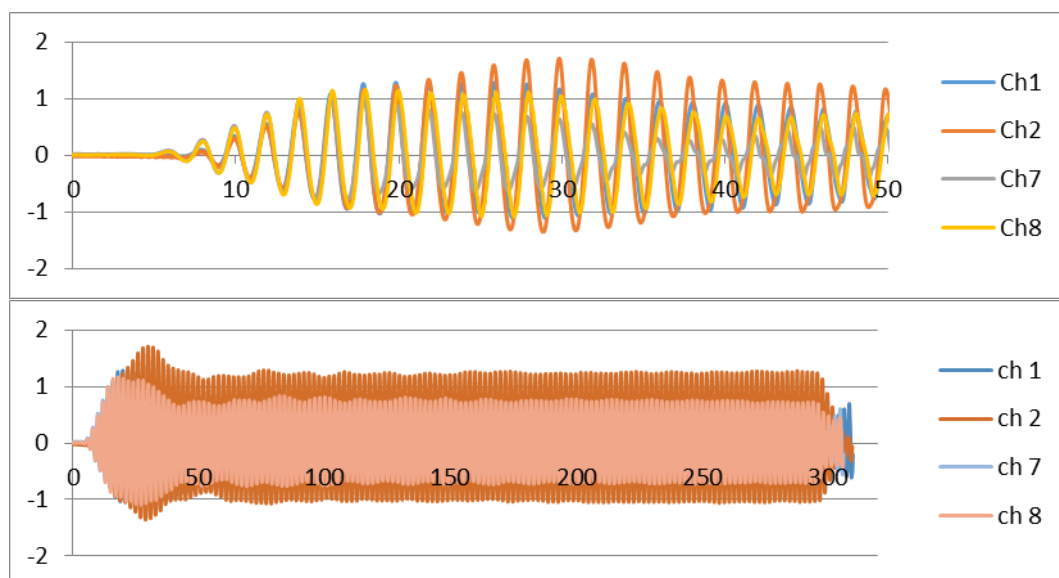
A41



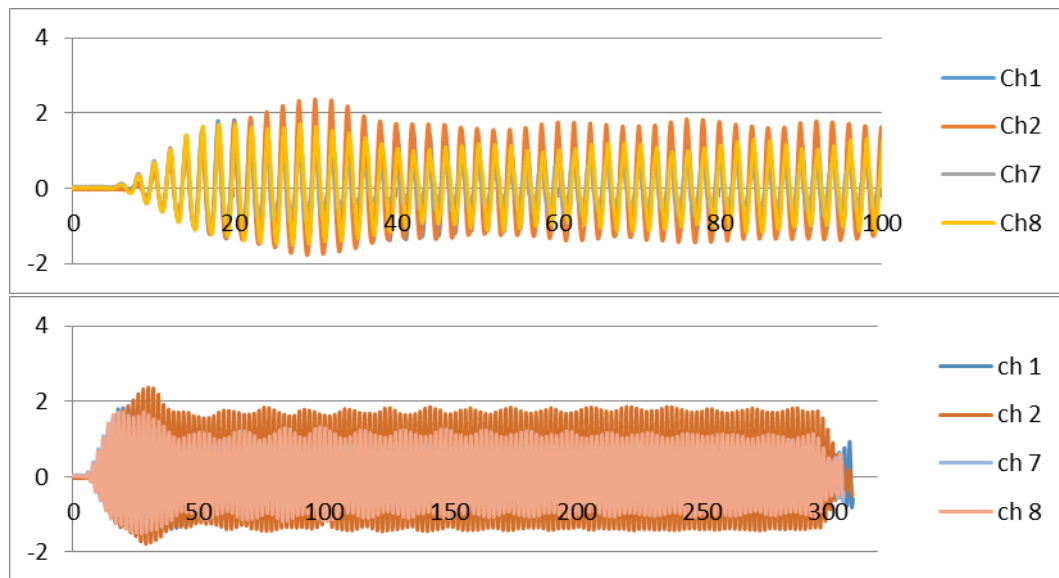
A42



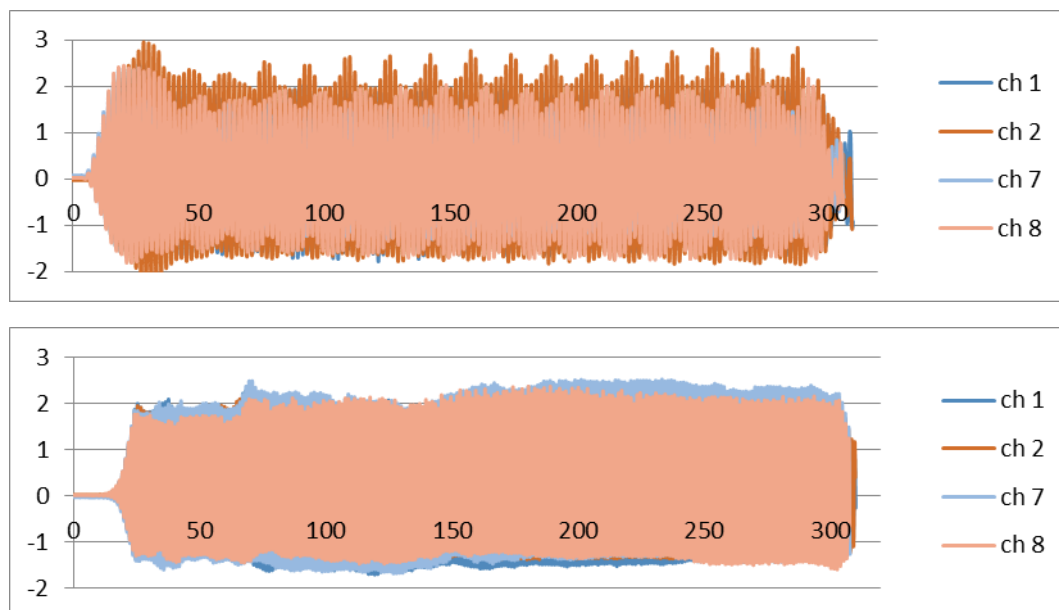
A43



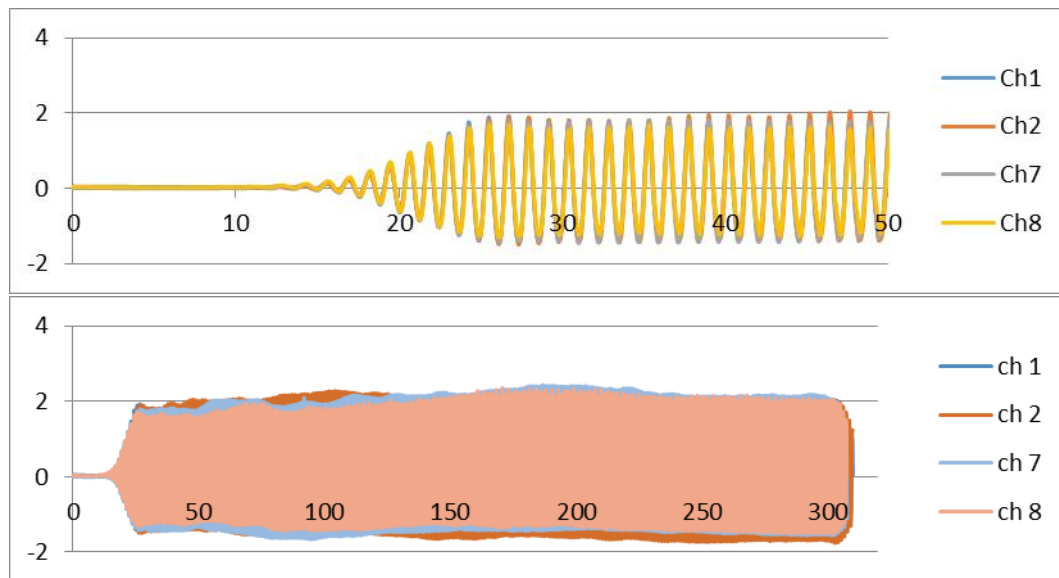
A44



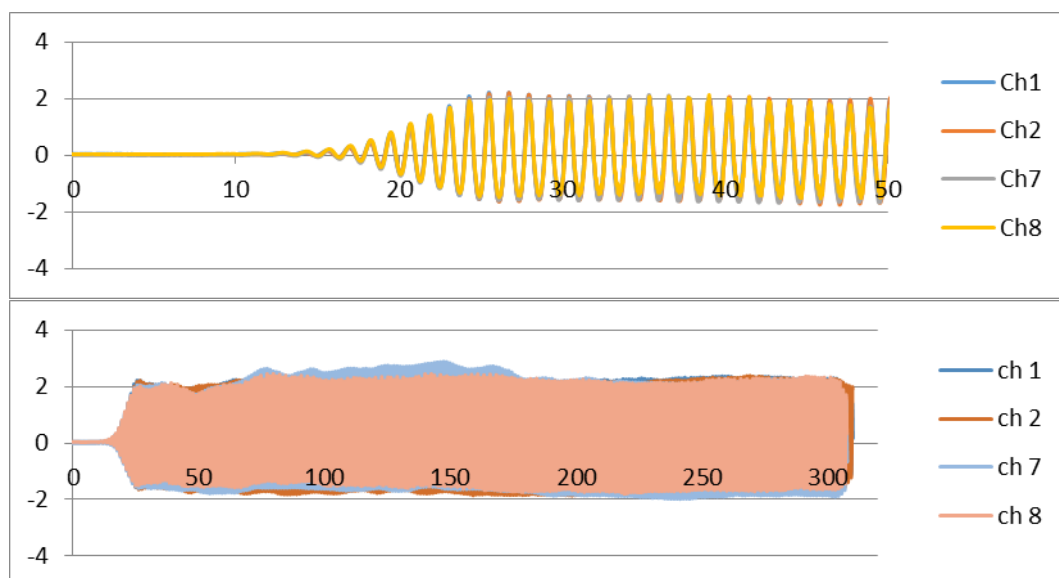
A45



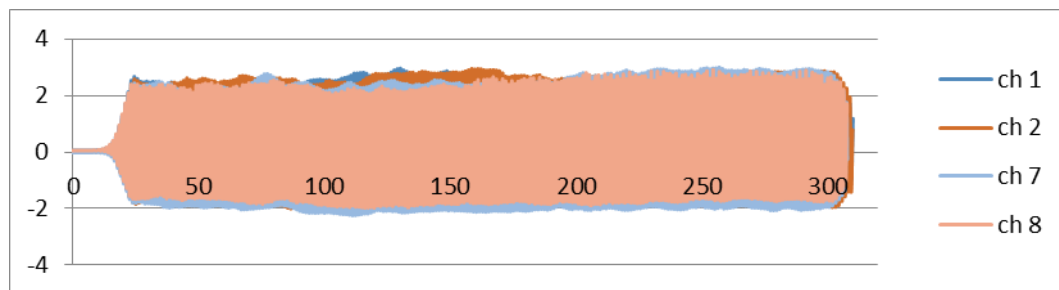
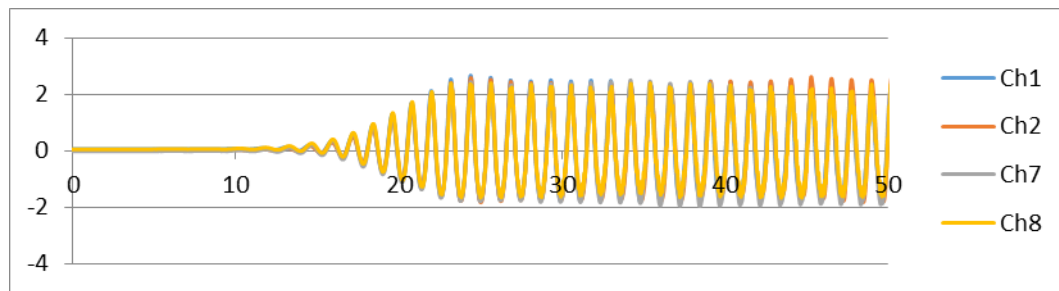
B11



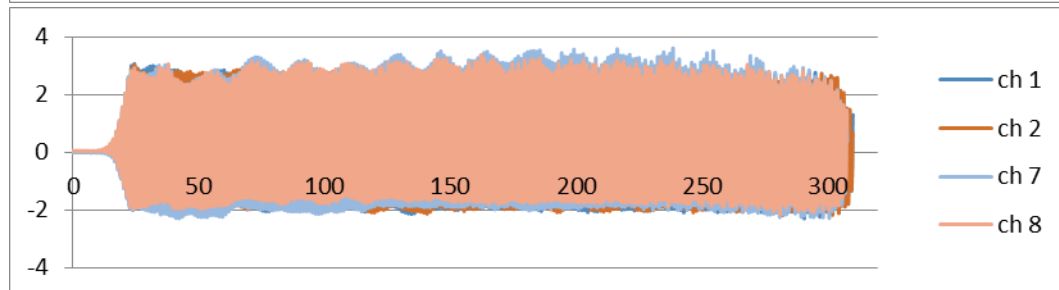
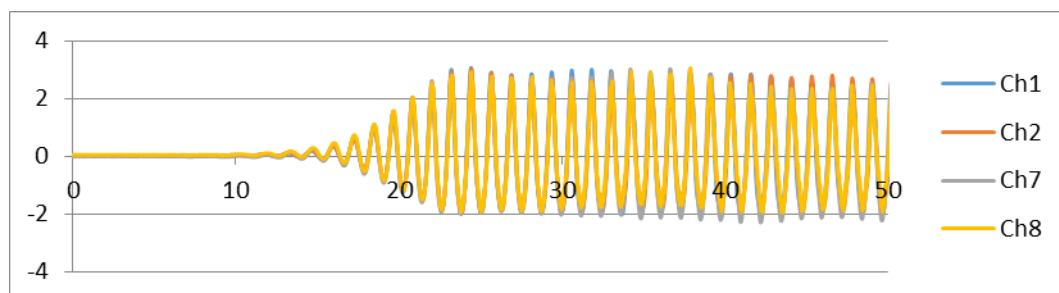
B12



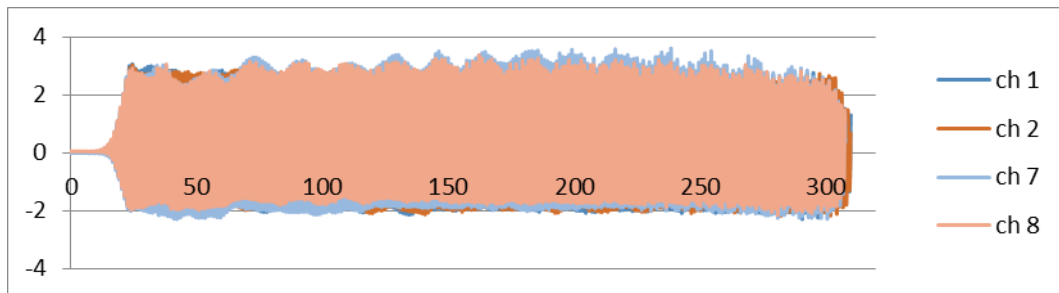
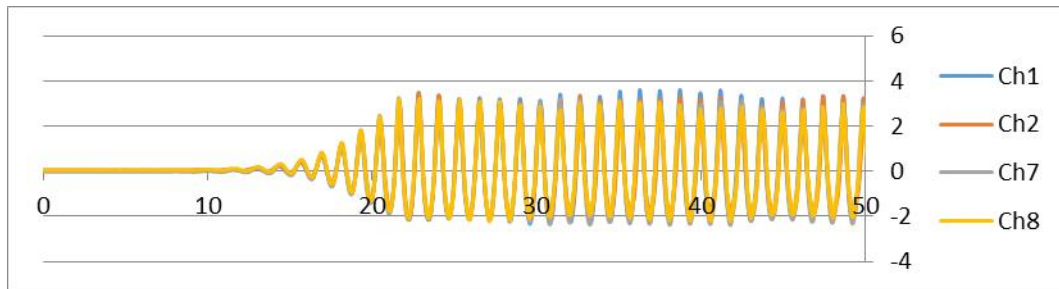
B13



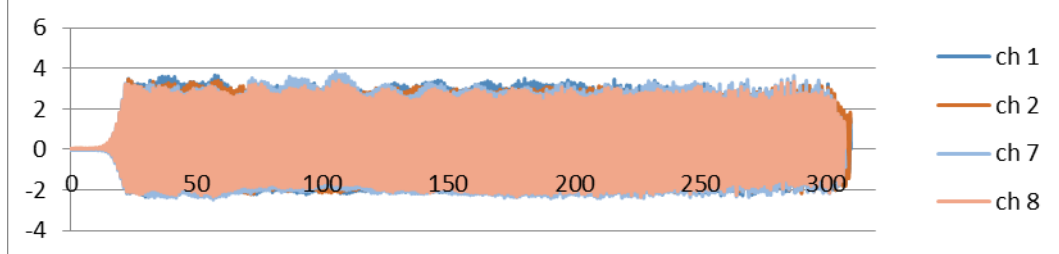
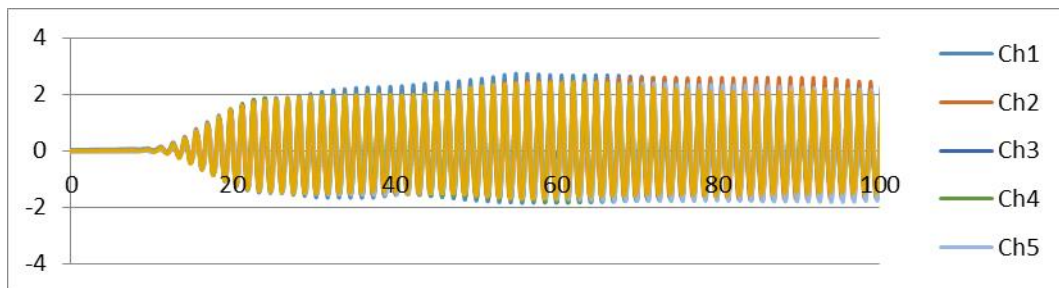
B14



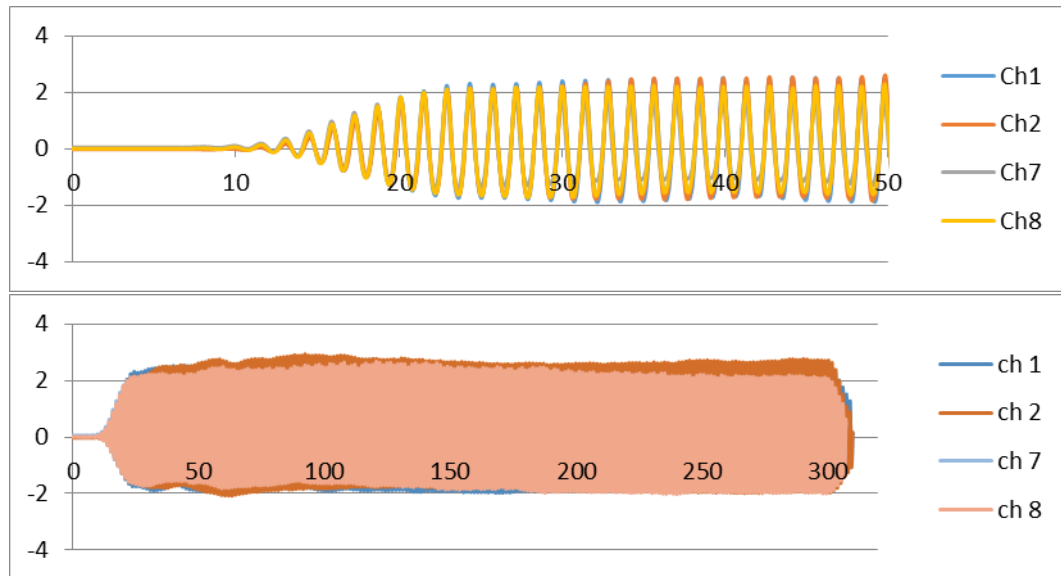
B15



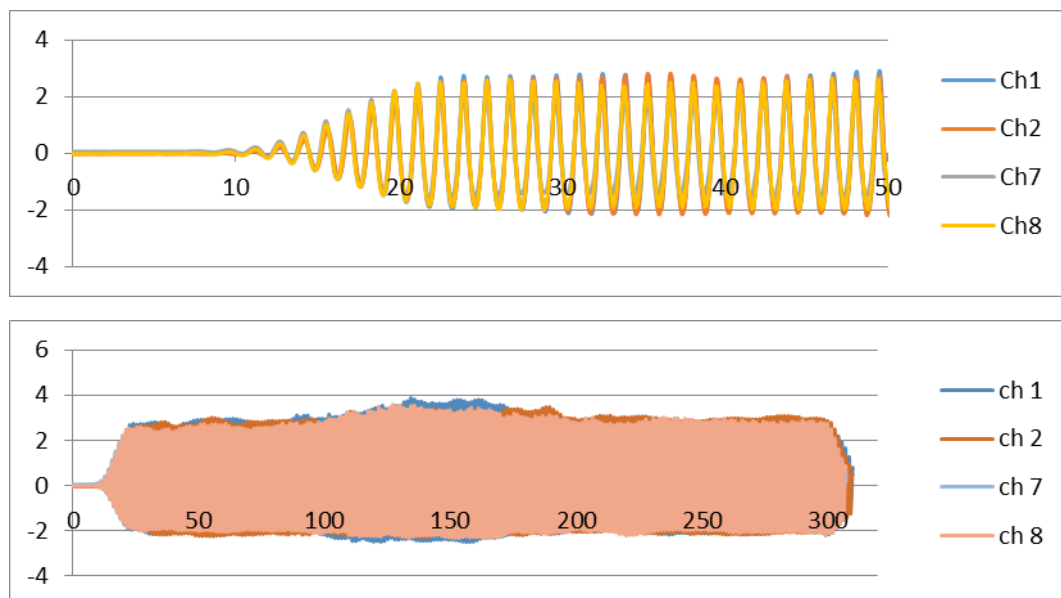
B21



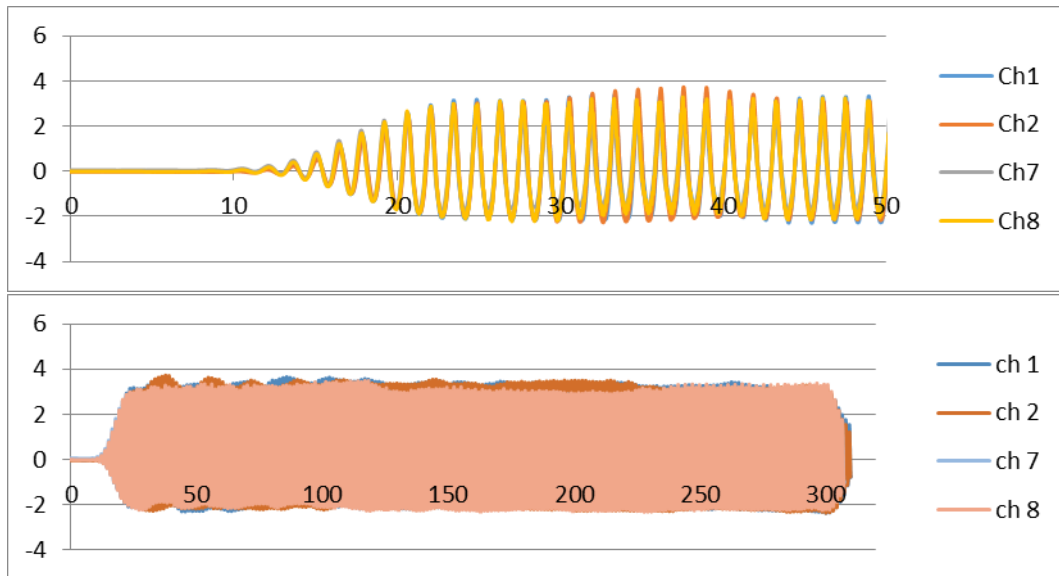
B22



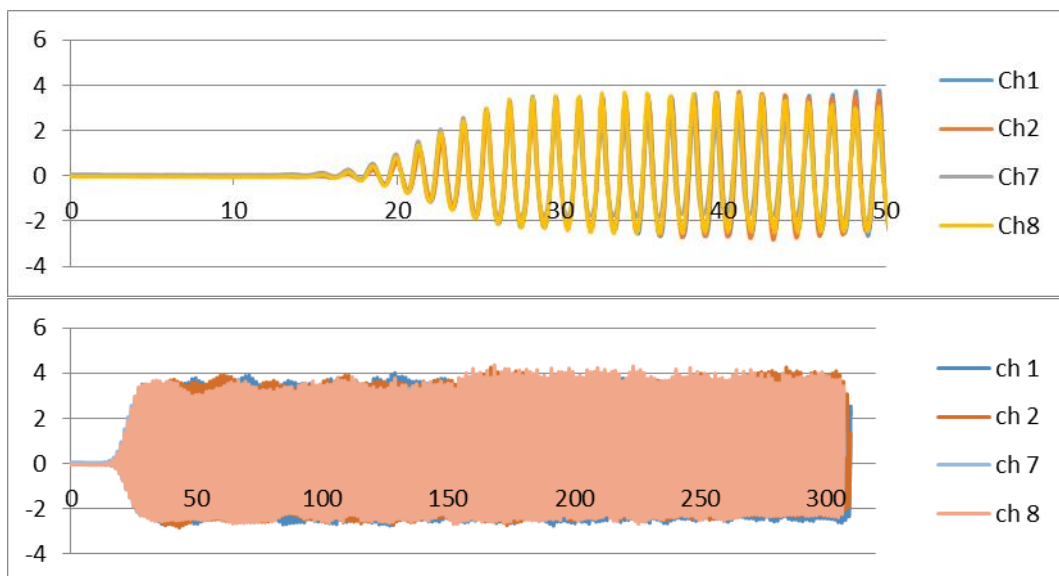
B23



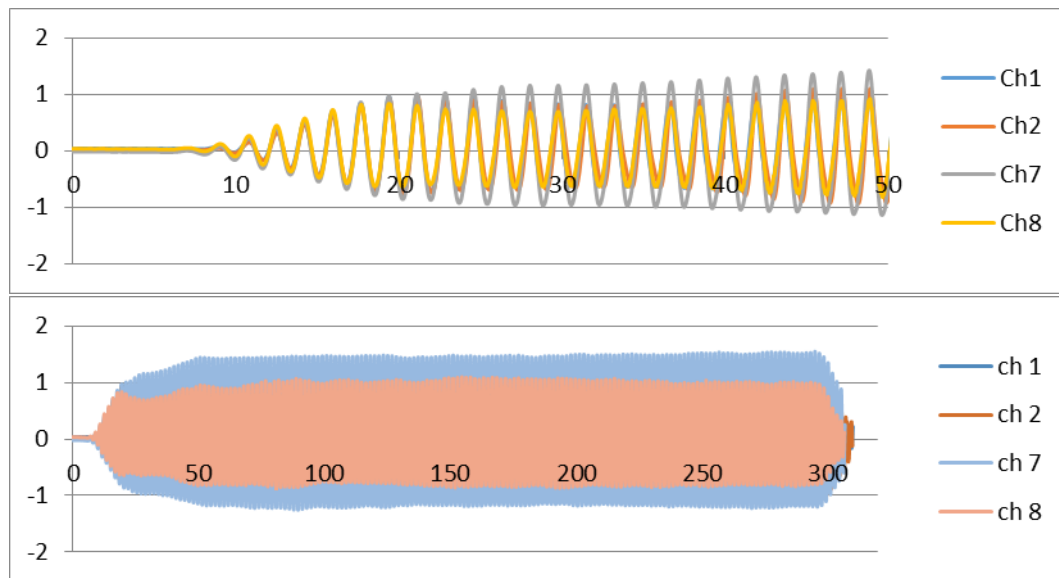
B24



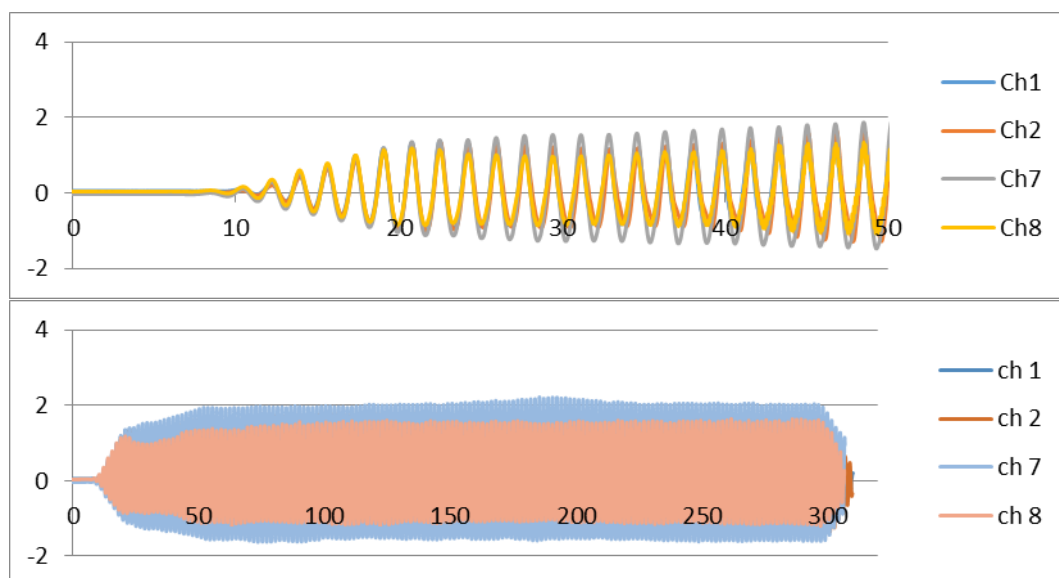
B25



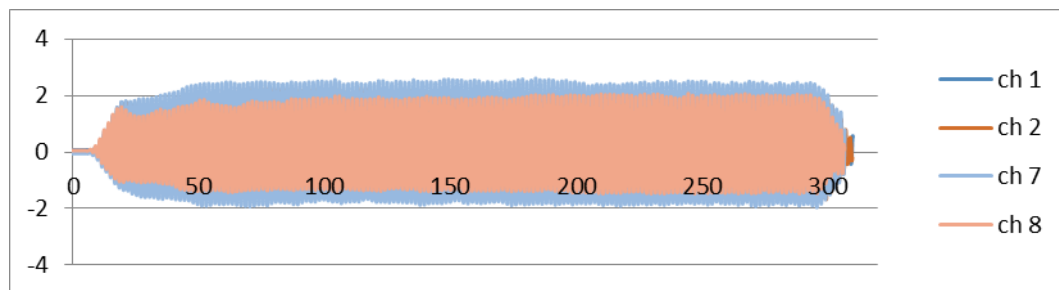
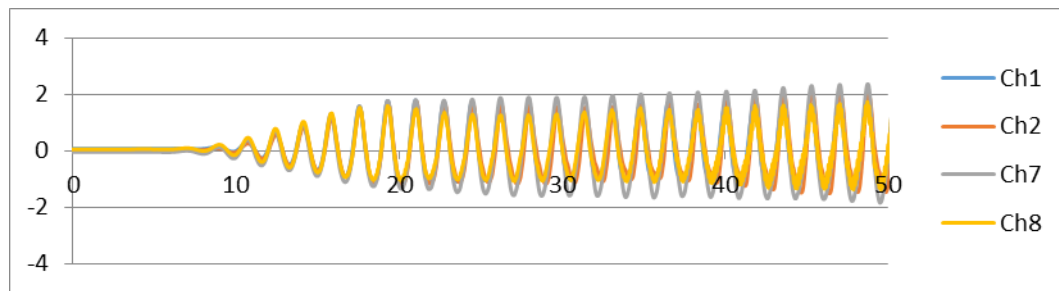
B31



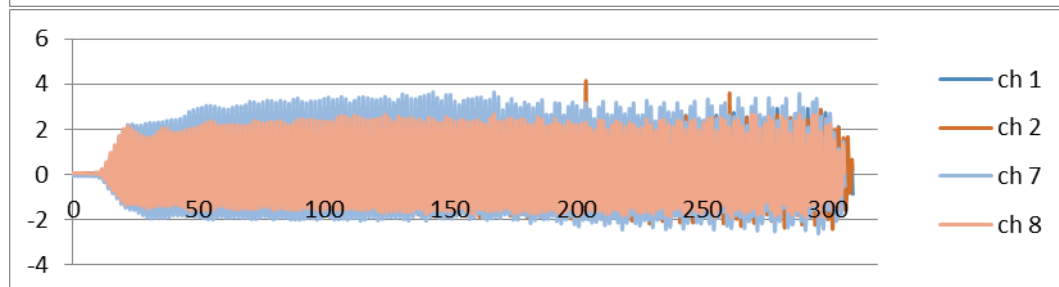
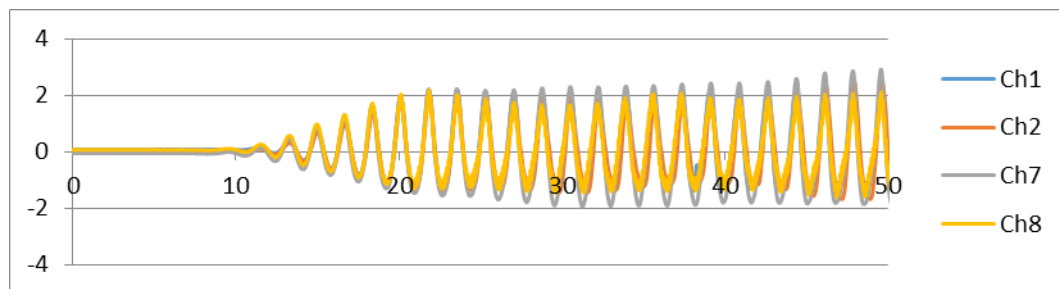
B32



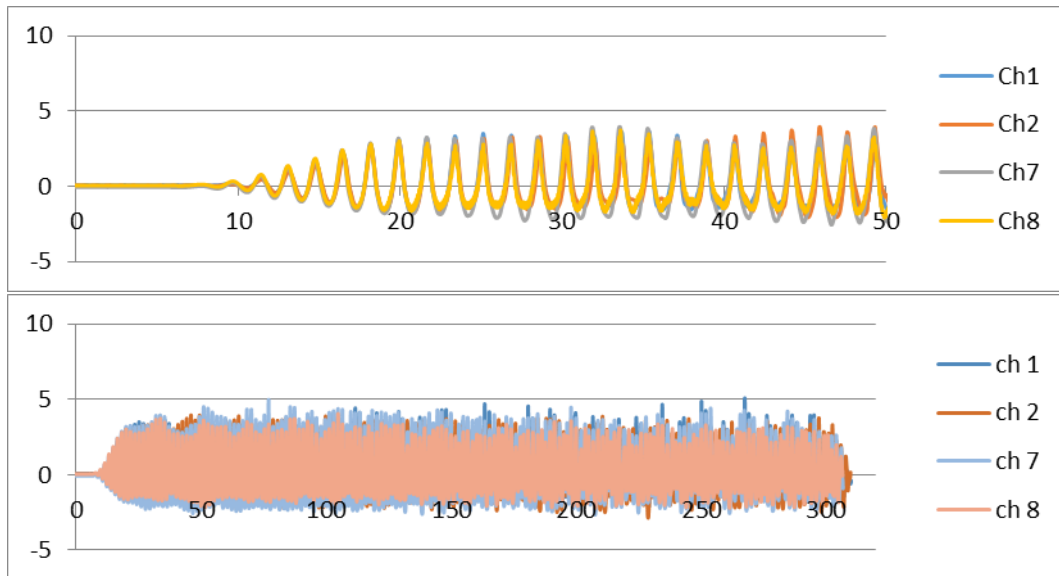
B33



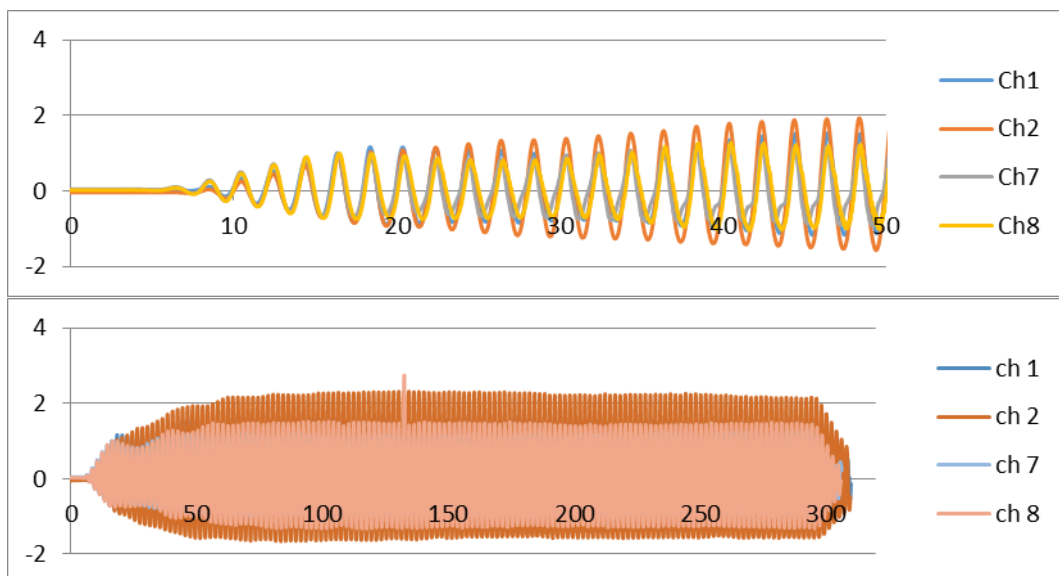
B34



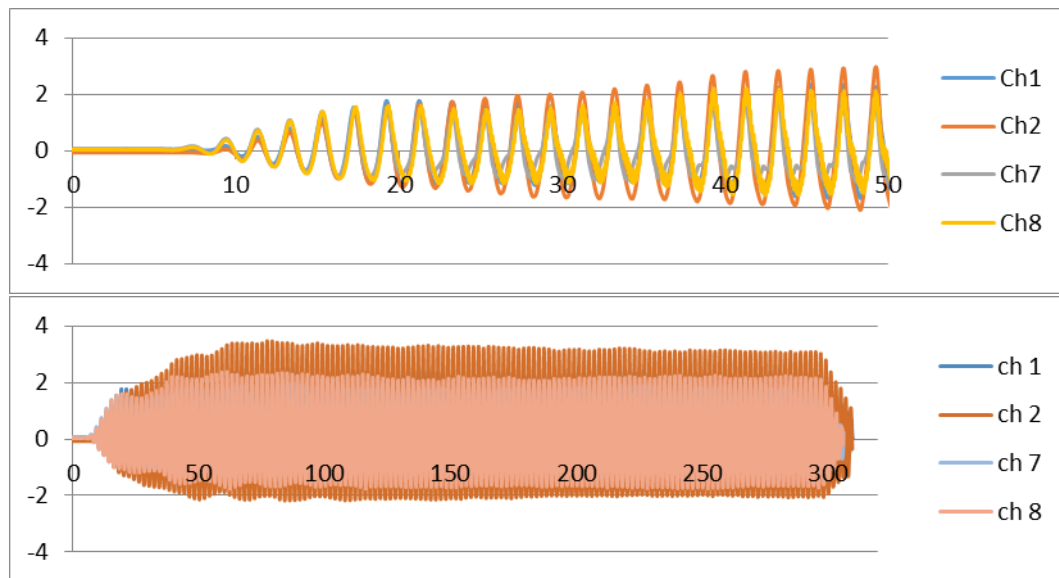
B35



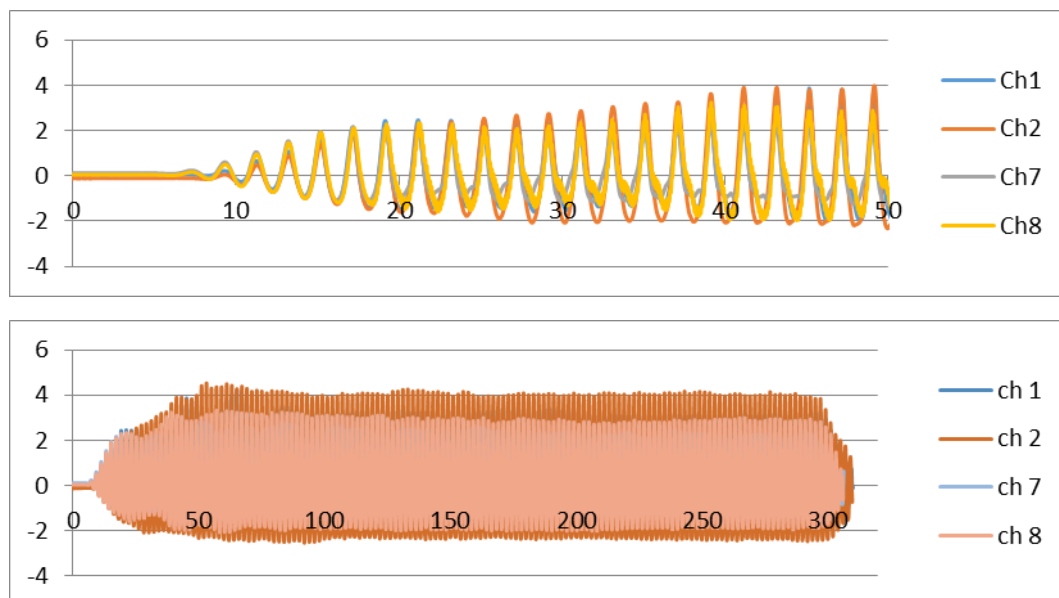
B41



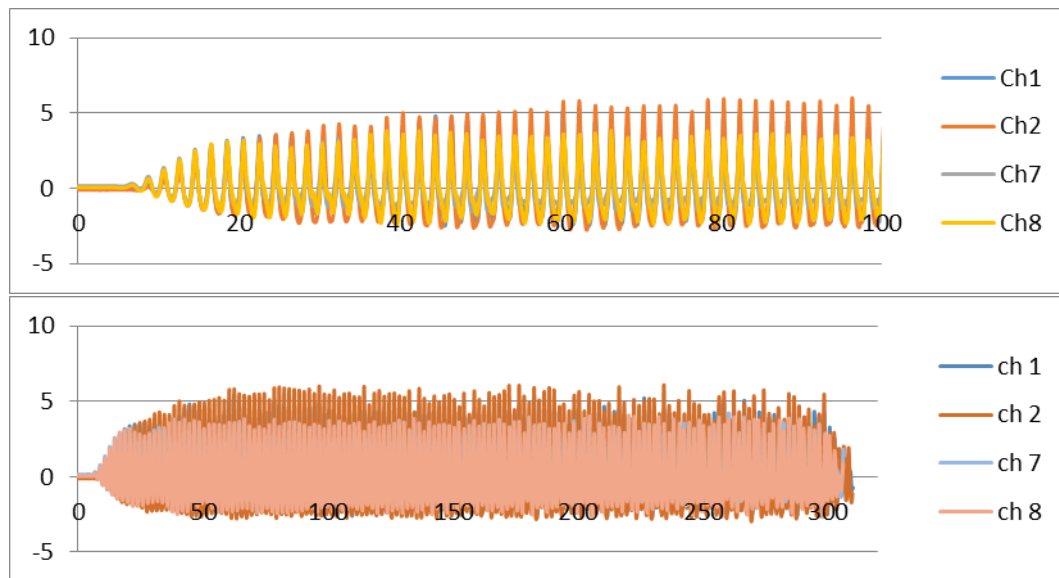
B42



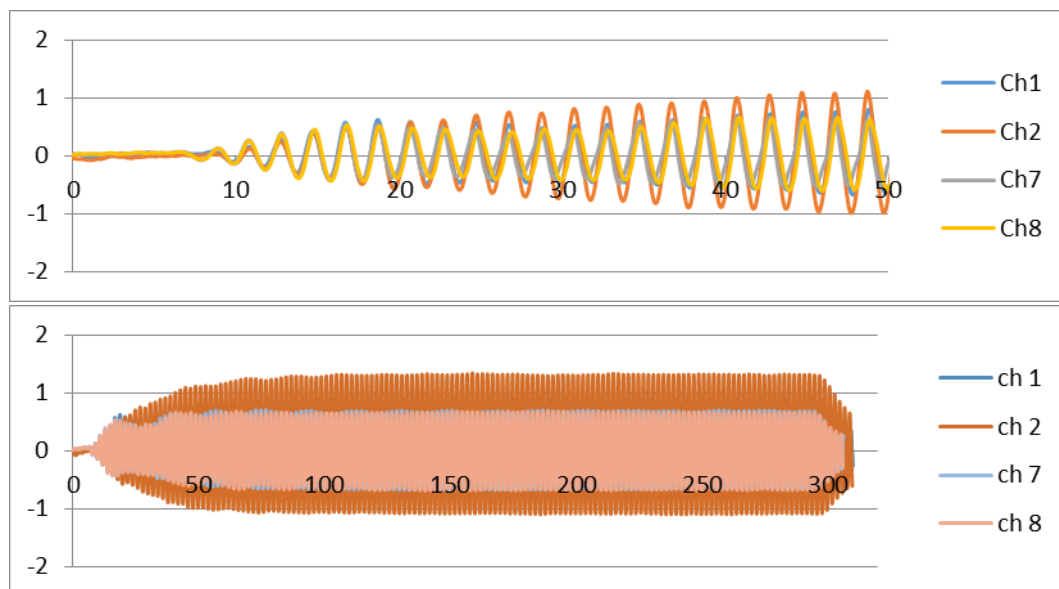
B43



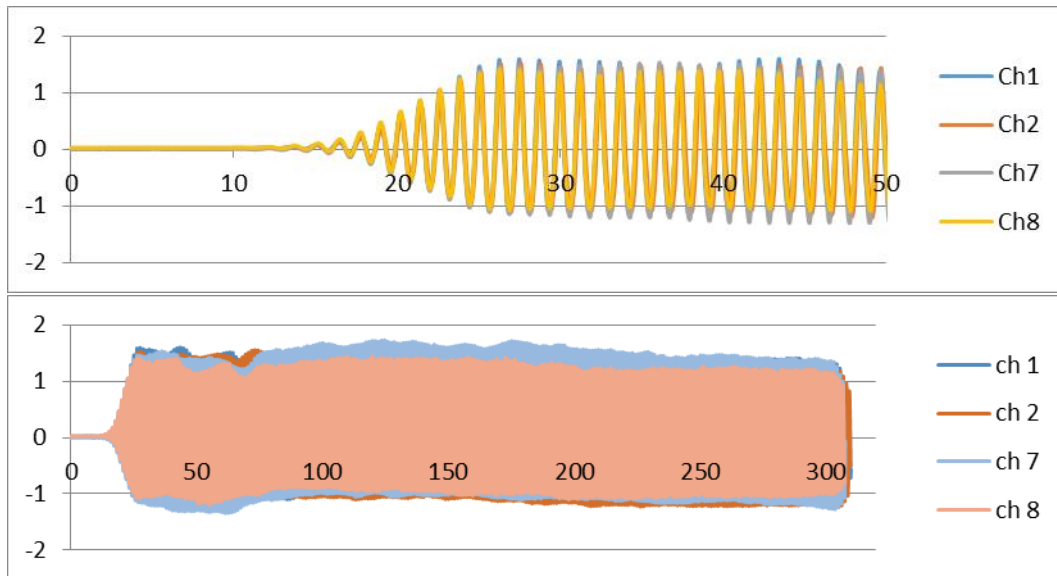
B44



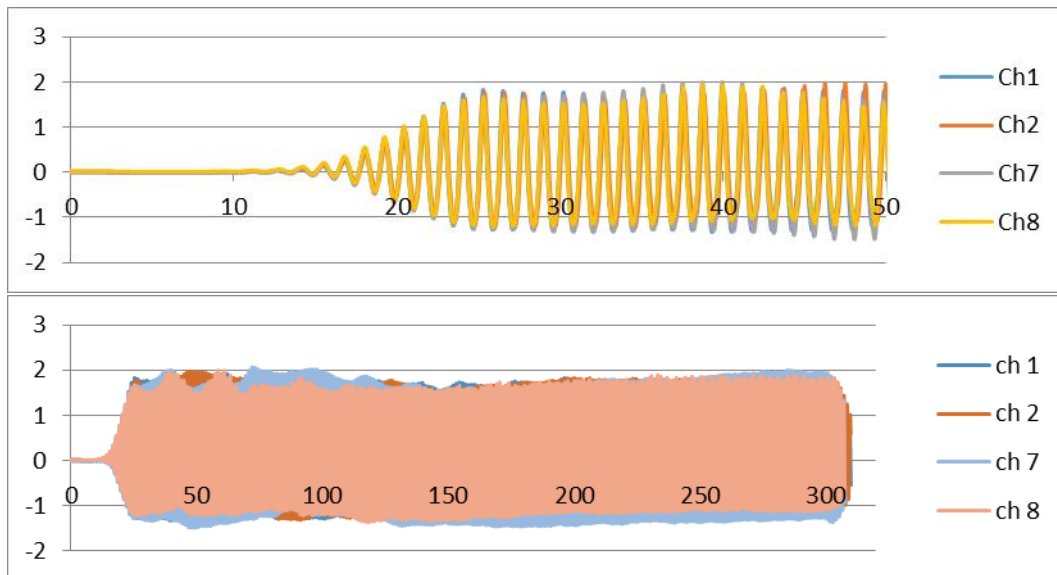
B45



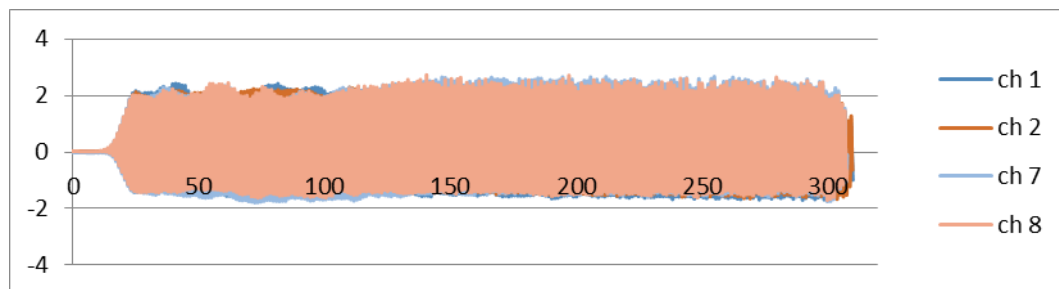
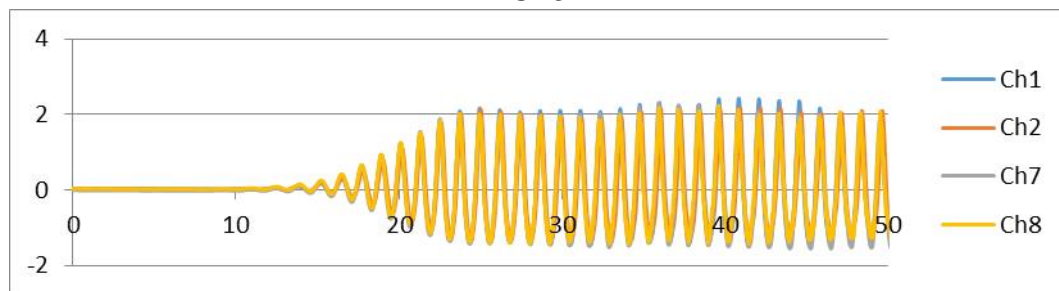
C11



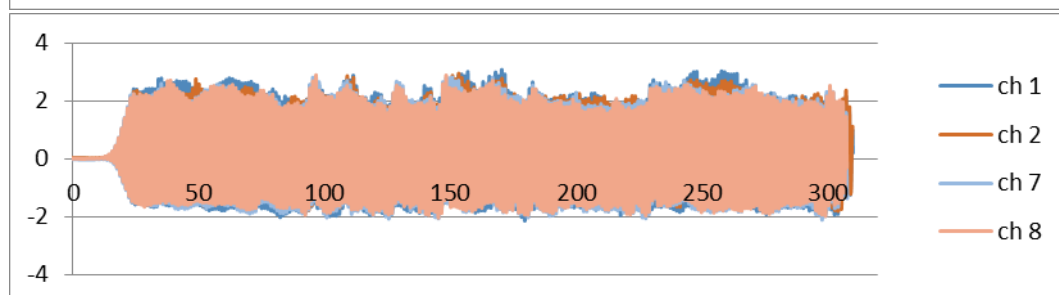
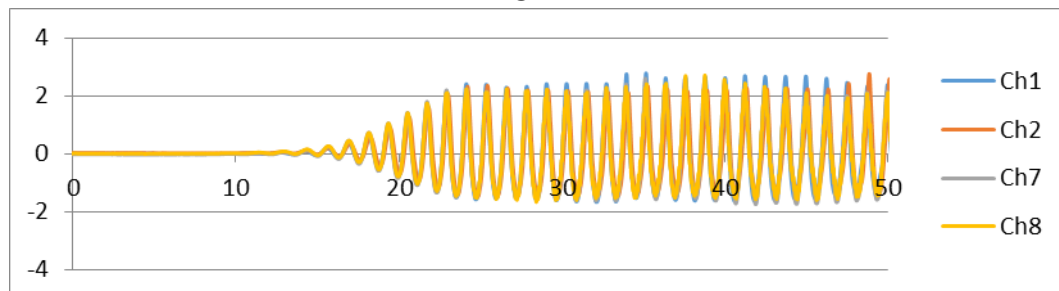
C12



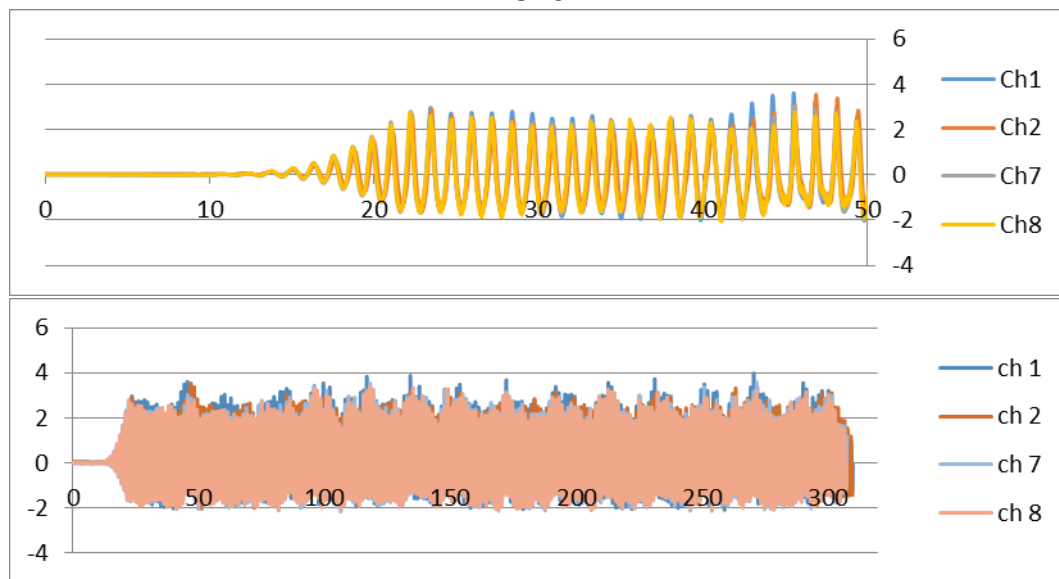
C13



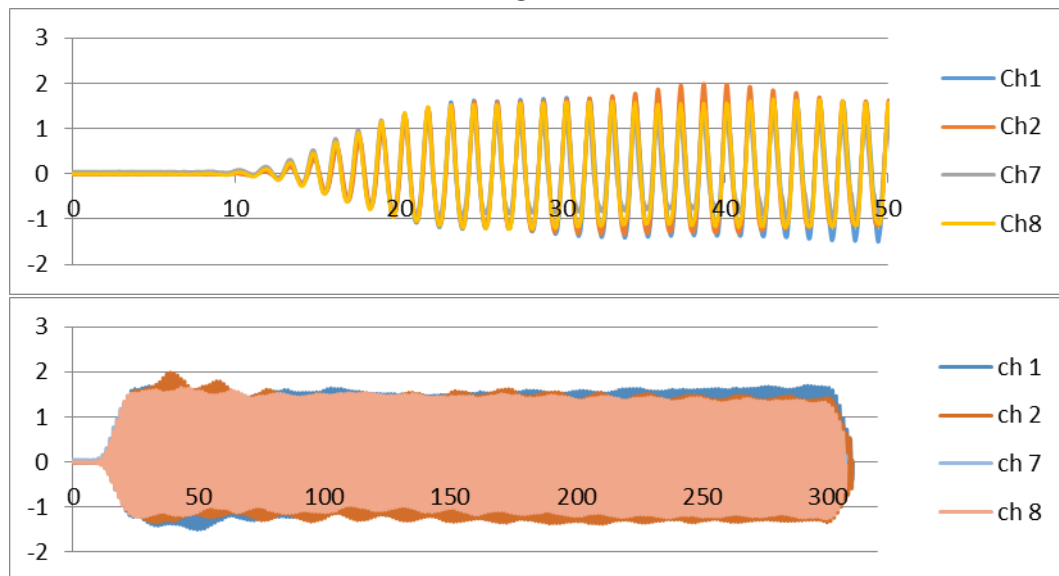
C14



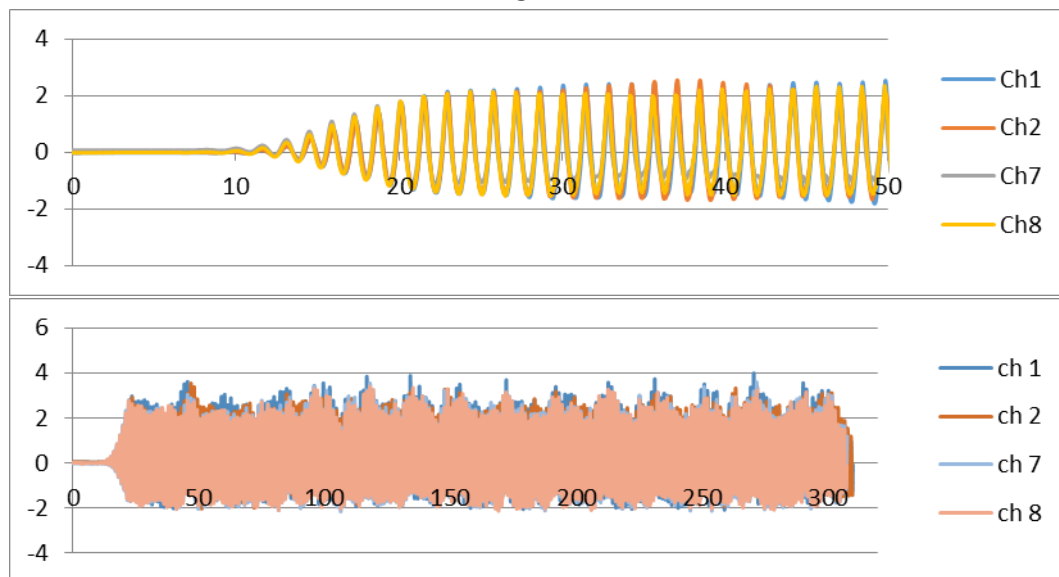
C15



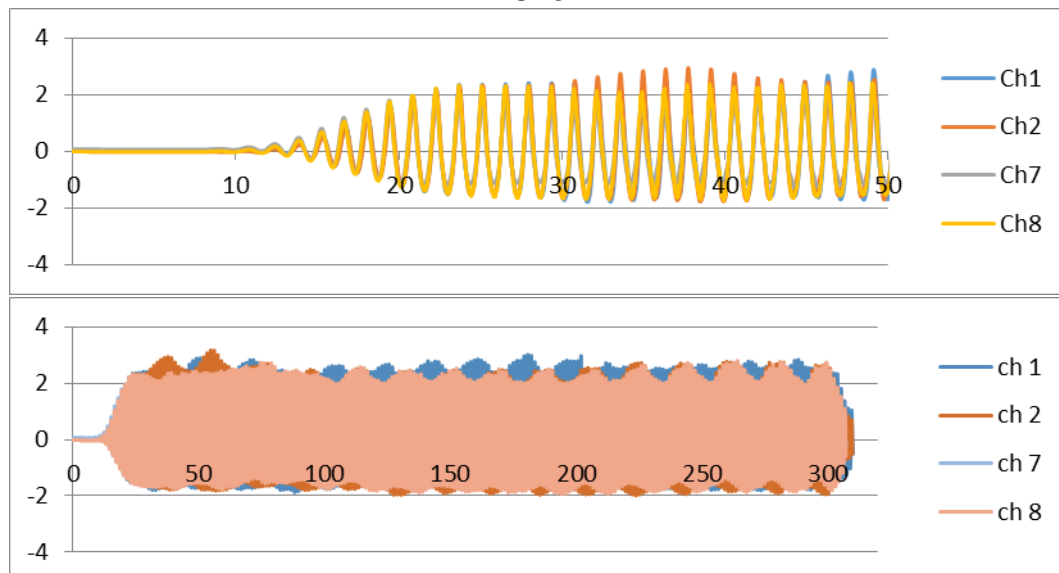
C21



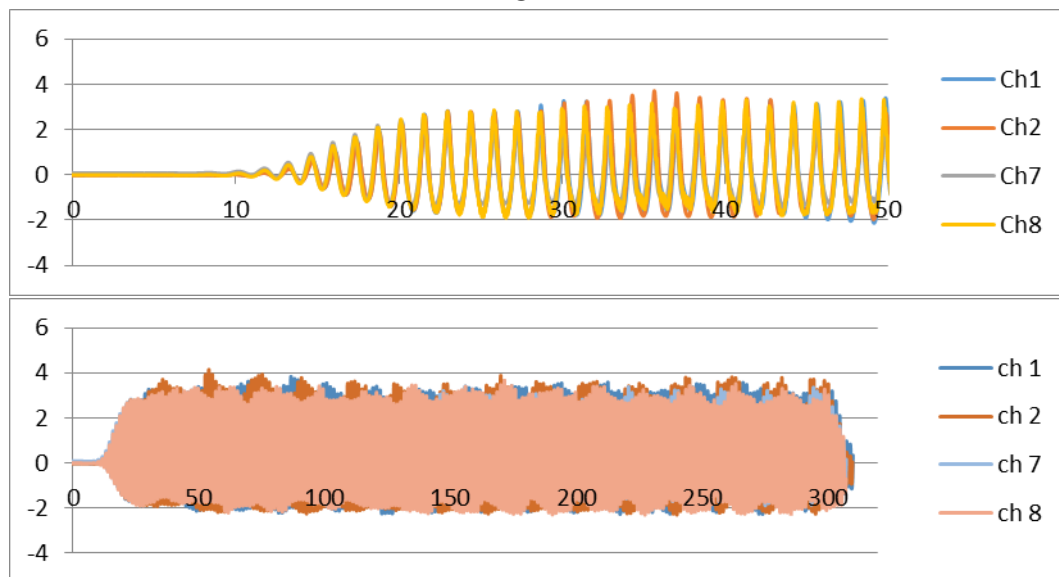
C22



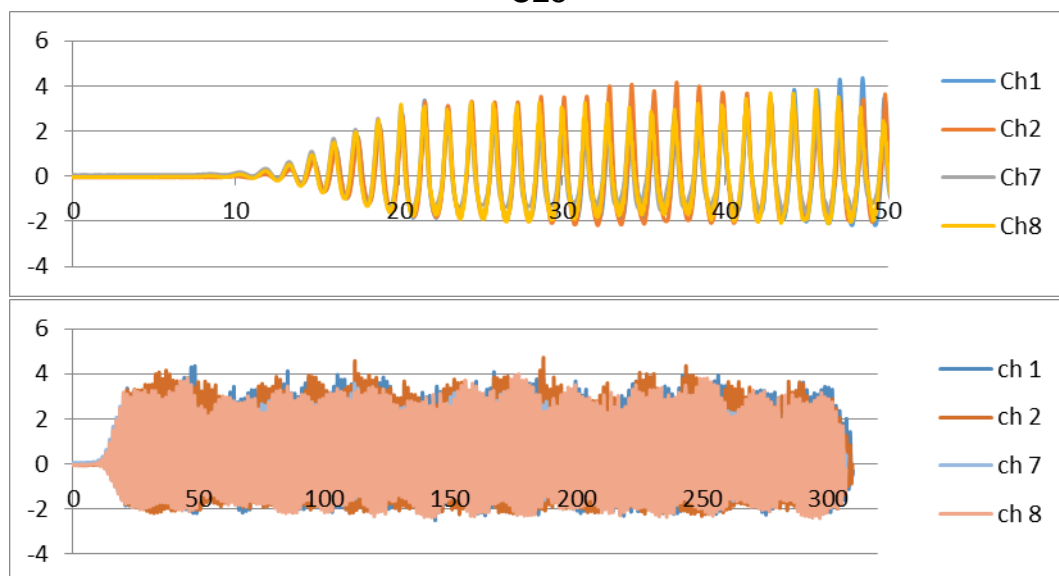
C23



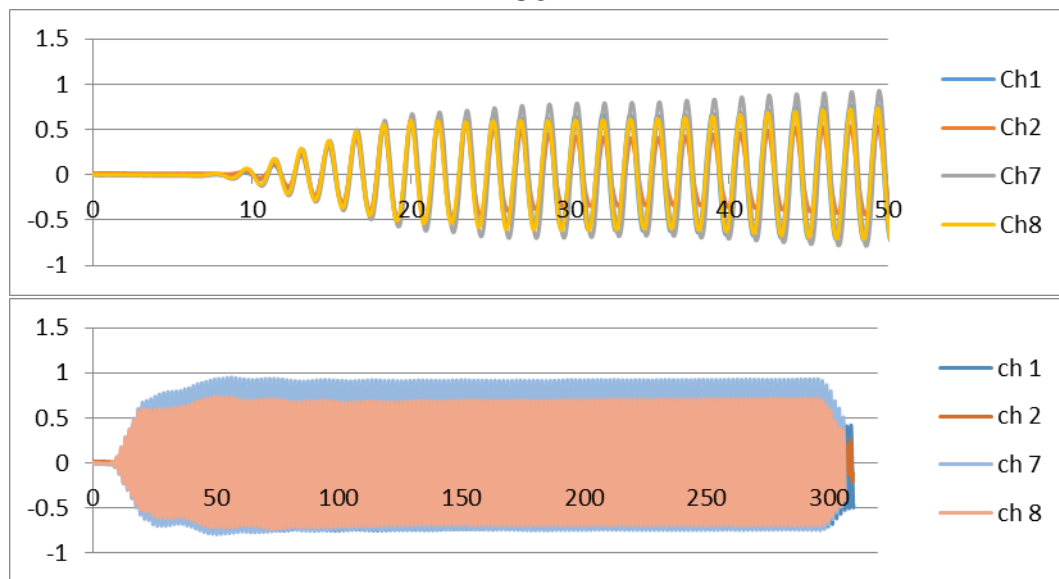
C24



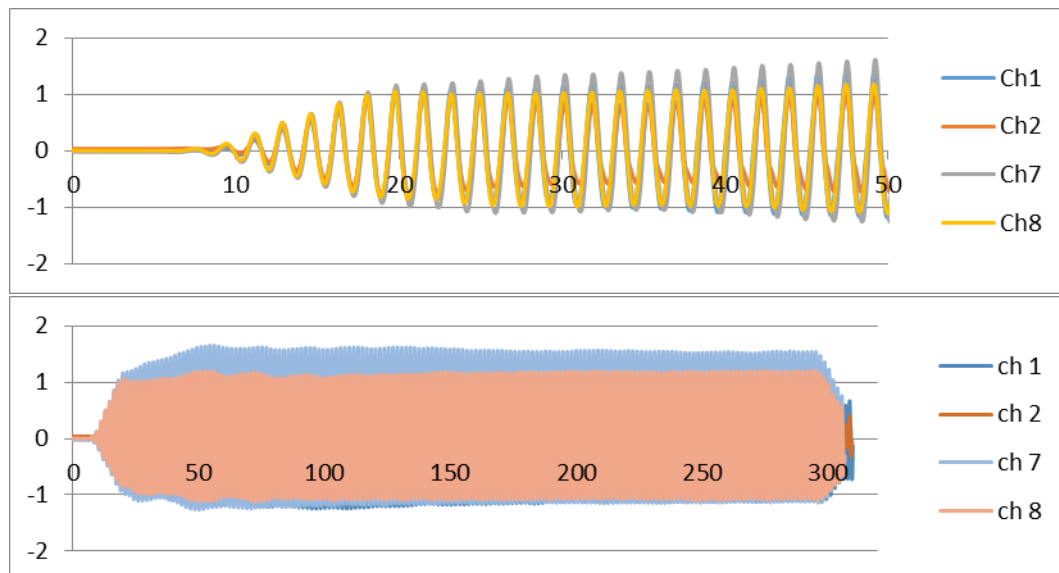
C25



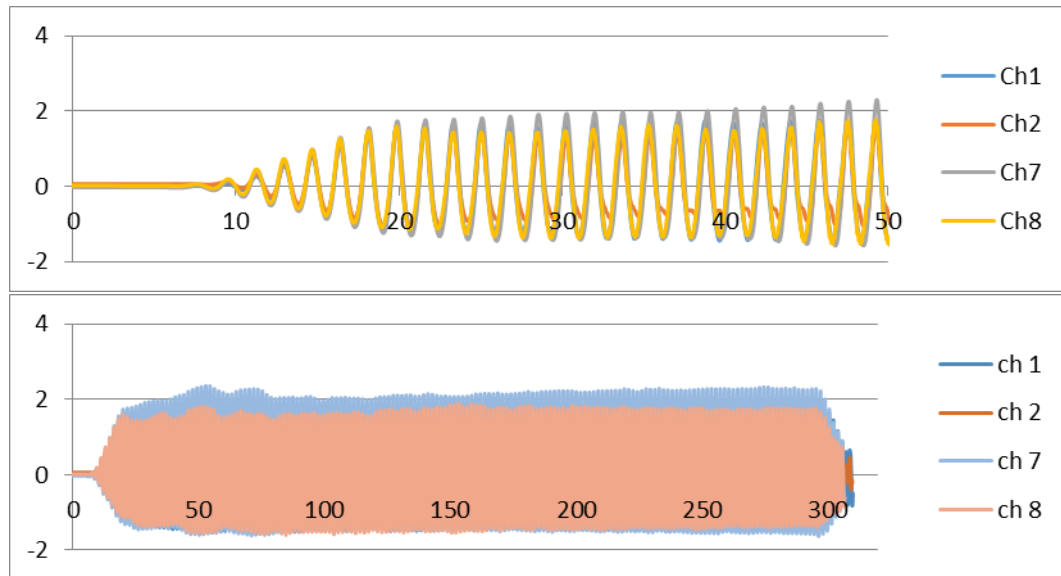
C31



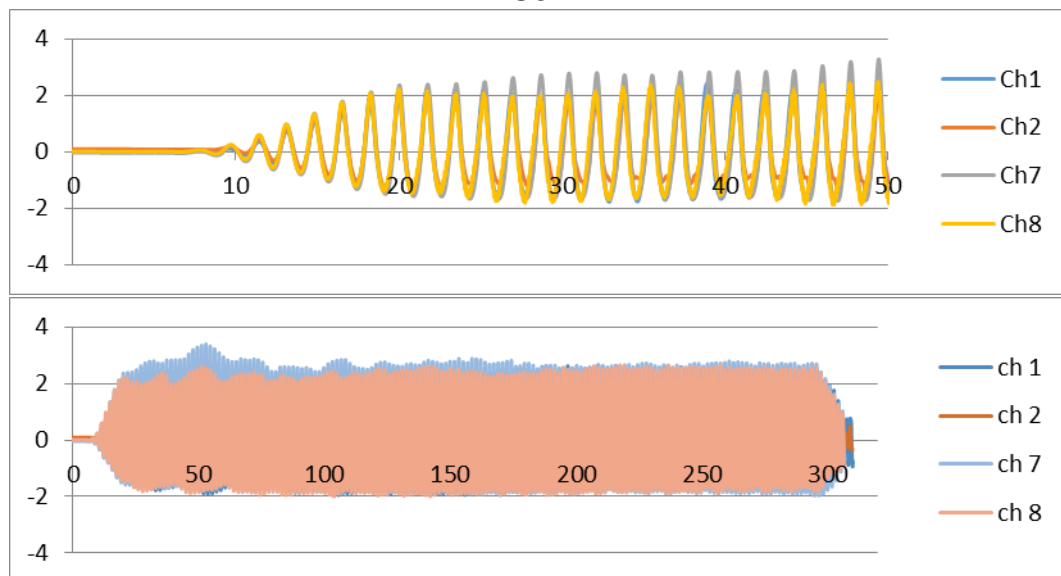
C32



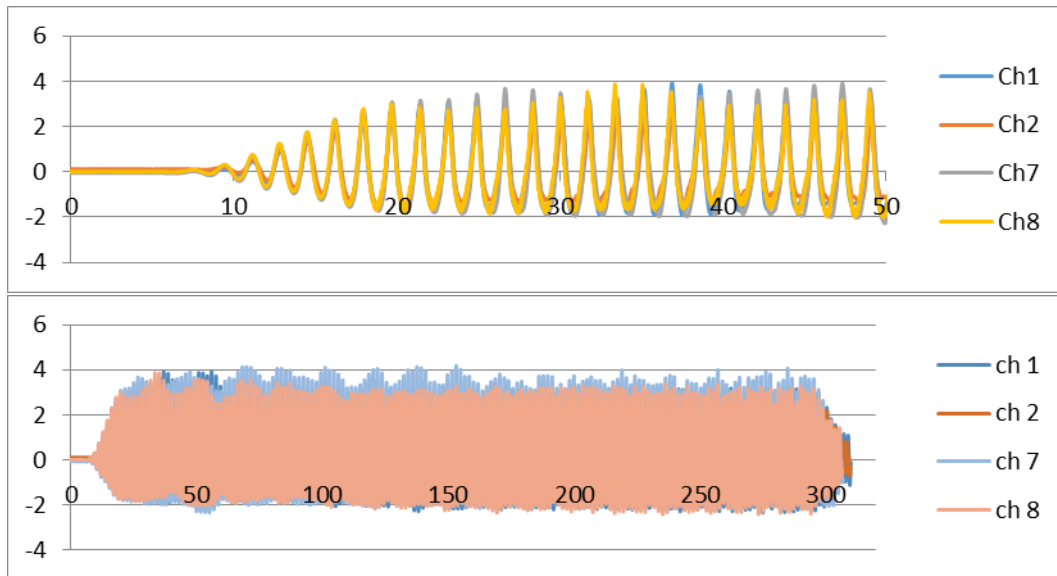
C33



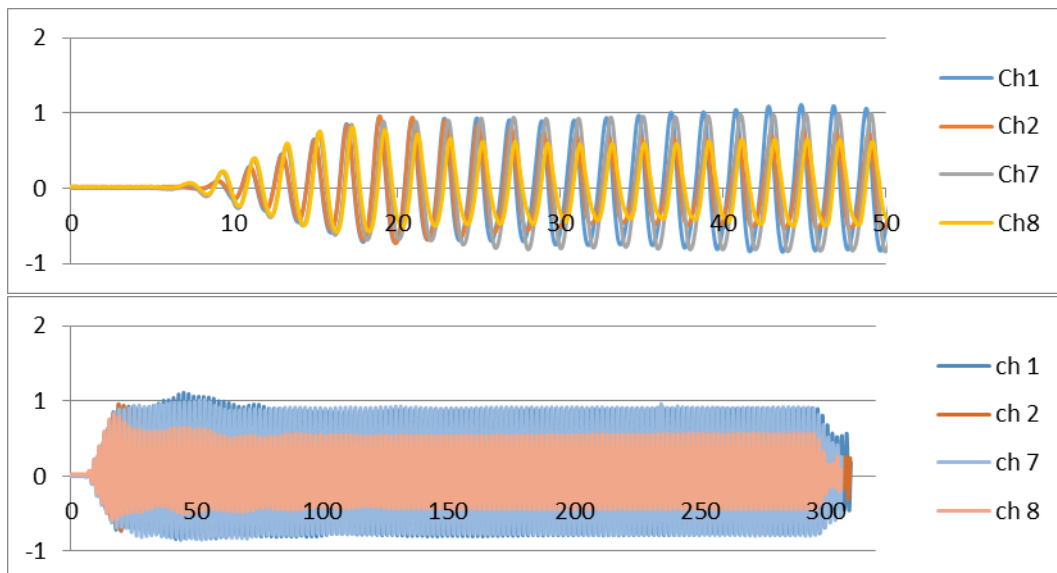
C34



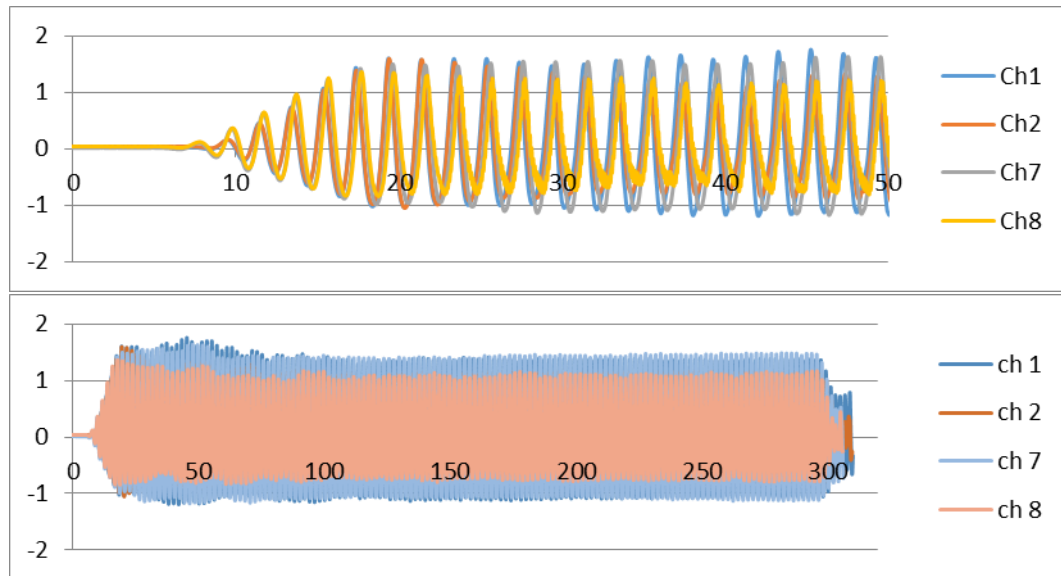
C35



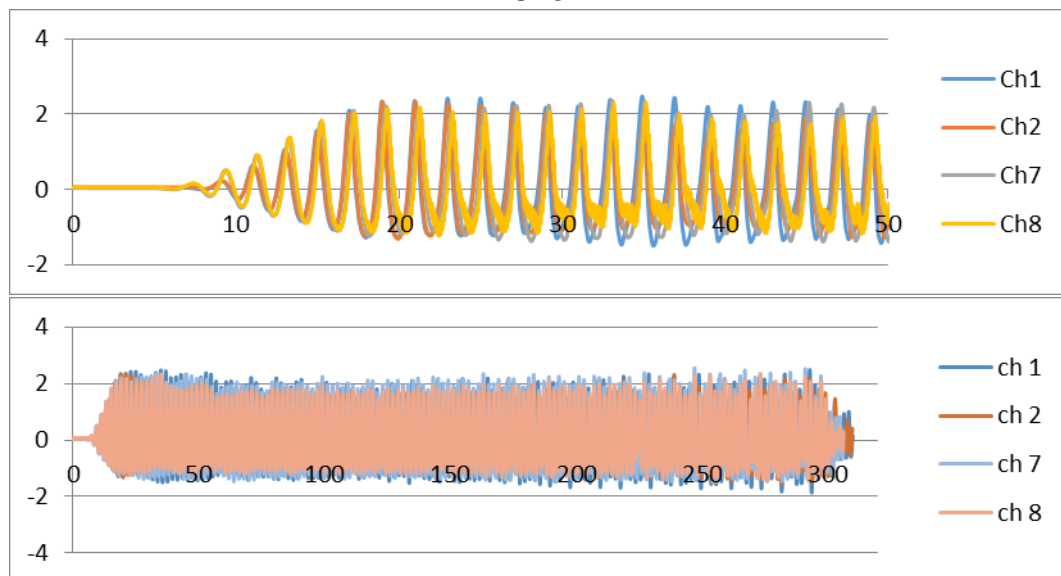
C41



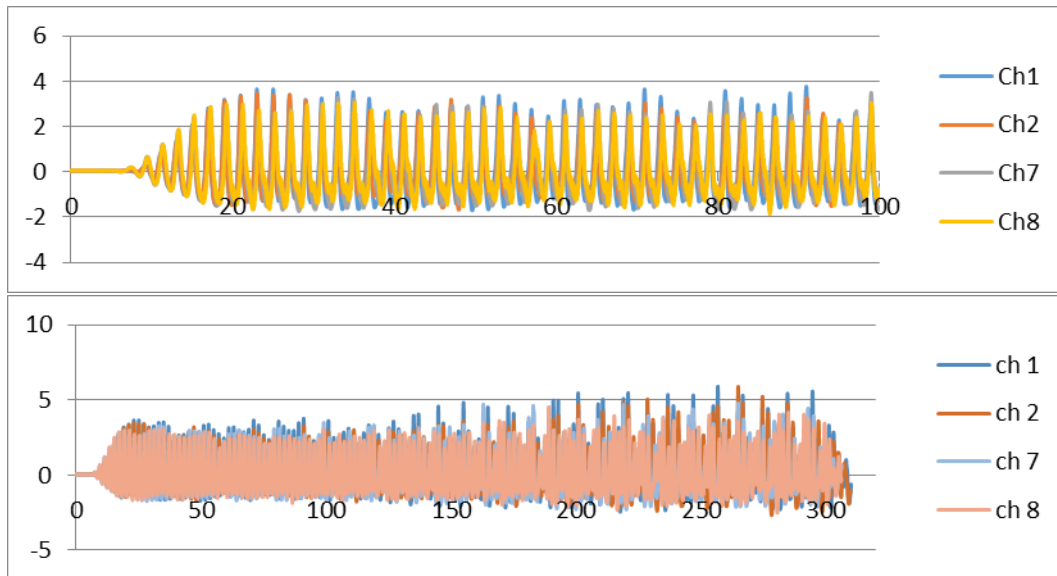
C42



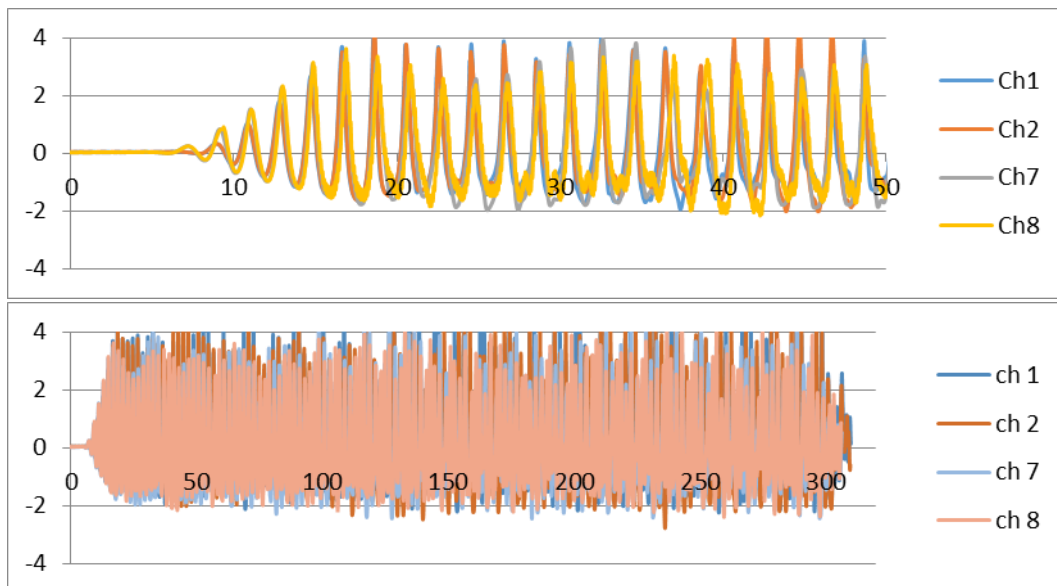
C43



C44



C45



2. Tabel data Ketinggian gelombang datang, gelombang pantul, dan Koefisien refleksi

Kedalaman 0.7 m

No.	Data	D(m)	T(s)	L(m)	Hi(m)	Hr(m)	Kr
1	A11	0.7	1.23	2.267	0.10965	0.02637	0.24065
2	A12	0.7	1.23	2.267	0.12908	0.02703	0.20945
3	A13	0.7	1.23	2.267	0.15477	0.02410	0.15581
4	A14	0.7	1.23	2.267	0.20055	0.01850	0.09222
5	A15	0.7	1.23	2.267	0.21083	0.01636	0.07764
6	A21	0.7	1.414	2.85	0.14512	0.02422	0.16688
7	A22	0.7	1.414	2.85	0.18328	0.02493	0.13621
8	A23	0.7	1.414	2.85	0.20715	0.02862	0.13811
9	A24	0.7	1.414	2.85	0.23823	0.03200	0.13018
10	A25	0.7	1.414	2.85	0.28742	0.03495	0.12157
11	A31	0.7	1.732	3.828	0.08699	0.03388	0.38952
12	A32	0.7	1.732	3.828	0.11610	0.03498	0.29913
13	A33	0.7	1.732	3.828	0.15525	0.03839	0.24738
14	A34	0.7	1.732	3.828	0.18512	0.04212	0.22764
15	A35	0.7	1.732	3.828	0.22455	0.04884	0.21761
16	A41	0.7	2	4.624	0.02615	0.01468	0.56160
17	A42	0.7	2	4.624	0.05673	0.02726	0.48057
18	A43	0.7	2	4.624	0.09021	0.03973	0.44050
19	A44	0.7	2	4.624	0.12713	0.05291	0.41280
20	A45	0.7	2	4.624	0.17122	0.06114	0.36171

Kedalaman 0.6 m

No.	Data	D(m)	T(s)	L(m)	Hi(m)	Hr(m)	Kr
1	B11	0.6	1.23	2.211	0.14674	0.01822	0.12422
2	B12	0.6	1.23	2.211	0.16163	0.01889	0.11684
3	B13	0.6	1.23	2.211	0.18417	0.02479	0.13462
4	B14	0.6	1.23	2.211	0.18648	0.02372	0.12714
5	B15	0.6	1.23	2.211	0.20111	0.02163	0.10752
6	B21	0.6	1.414	2.746	0.12883	0.02336	0.18132
7	B22	0.6	1.414	2.746	0.15241	0.02199	0.14439
8	B23	0.6	1.414	2.746	0.17334	0.02106	0.12150
9	B24	0.6	1.414	2.746	0.19472	0.01793	0.09212
10	B25	0.6	1.414	2.746	0.21853	0.02974	0.13612
11	B31	0.6	1.732	3.637	0.12439	0.03914	0.31461
12	B32	0.6	1.732	3.637	0.16054	0.04439	0.27658

13	B33	0.6	1.732	3.637	0.20973	0.06577	0.31369
14	B34	0.6	1.732	3.637	0.23471	0.04853	0.20751
15	B35	0.6	1.732	3.637	0.25137	0.07779	0.27986
16	B41	0.6	2	4.362	0.09233	0.03402	0.36845
17	B42	0.6	2	4.362	0.15438	0.04360	0.28242
18	B43	0.6	2	4.362	0.21275	0.05742	0.26992
19	B44	0.6	2	4.362	0.25659	0.08006	0.31203
20	B45	0.6	2	4.362	0.31362	0.10631	0.33969

Kedalaman 0.5 m

No.	Data	D(m)	T(s)	L(m)	Hi(m)	Hr(m)	Kr
1	C11	0.5	1.23	2.128	0.12229	0.01212	0.09918
2	C12	0.5	1.23	2.128	0.14750	0.01835	0.12447
3	C13	0.5	1.23	2.128	0.17974	0.01613	0.08977
4	C14	0.5	1.23	2.128	0.18769	0.01729	0.09229
5	C15	0.5	1.23	2.128	0.20487	0.02395	0.11652
6	C21	0.5	1.414	2.608	0.11103	0.02760	0.24875
7	C22	0.5	1.414	2.608	0.15737	0.03263	0.20748
8	C23	0.5	1.414	2.608	0.17469	0.03512	0.20140
9	C24	0.5	1.414	2.608	0.22174	0.04350	0.19673
10	C25	0.5	1.414	2.608	0.22159	0.04538	0.20530
11	C31	0.5	1.732	3.604	0.06131	0.02246	0.36644
12	C32	0.5	1.732	3.406	0.10330	0.03305	0.31998
13	C33	0.5	1.732	3.406	0.14364	0.03706	0.25800
14	C34	0.5	1.732	3.406	0.18388	0.04939	0.26865
15	C35	0.5	1.732	3.406	0.22977	0.05780	0.25167
16	C41	0.5	2	4.056	0.06957	0.02489	0.35787
17	C42	0.5	2	4.056	0.11315	0.03022	0.26717
18	C43	0.5	2	4.056	0.15345	0.03361	0.21945
19	C44	0.5	2	4.056	0.19629	0.04403	0.22448
20	C45	0.5	2	4.056	0.21047	0.06948	0.34198