

DAFTAR PUSTAKA

- .S, N.A., Wijono, T.H. and Handoyo (2015) 'No Title', *kesehatan*, 13(3), pp. 149–152.
- Al-jabri, A.A. *et al.* (2021) 'Defining IL-6 Levels in Healthy Individuals: A Meta-Analysis', *orcid*, 0000-0003-, pp. 0–3. doi:10.1002/jmv.26654.
- Almisyahadah *et al.* (2013) 'Deteksi Gen Interleukin-6 (IL-6) Pada Sampel Klinis Tuberkulosis Dengan Metode Polymerase Chain Reaction (PCR)', *Biologi Molekuler*, 6.
- Aloulou, A. *et al.* (2020) 'The effect of night-time exercise on sleep architecture among well-trained male endurance runners', *Journal of Sleep Research*, 29(6). doi:10.1111/jsr.12964.
- Amano, H. *et al.* (2018) 'Interleukin-6 Level among Shift and Night Workers in Japan : Accepted for publication ', *atheroscler thromb*, 25(000–000), pp. 1–9.
- Andriana, L.M. and Ashadi, K. (2019) 'Perbandingan dua jenis olahraga pada pagi dan malam hari terhadap kualitas tidur', *Jurnal SPORTIF: Jurnal Penelitian Pembelajaran*, 5(1), p. 98. doi:10.29407/js_unpgri.v5i1.12800.
- Arief, H. and Widodo, M.A. (2013) 'Peranan Stres Oksidatif Pada Proses Penyembuhan Luka Rules of Oxidative Stress in Wound Healing', 2071(2), pp. 22–29.
- aydin (2018) 'No Title', *A Critical Review on Anaerobic and Aerobic Exercise: Which One to Choose? The Difference, The Benefits and The Risks.*, pp. 386–389. Available at: <https://doi.org/10.31031/PRM.2022.05.000604>.
- Barth, V. *et al.* (2019) 'Individualized Monitoring of Muscle Recovery in Elite Badminton', 10(June). doi:10.3389/fphys.2019.00778.
- Bongga, S. (2018) 'Respon Akut Olahraga Futsal Malam Terhadap Kadar Interleukin-6 Pada Individu Dewasa Muda', *Jurnal Dinamika*, 9(2), pp. 29–34.
- Bongiovanni, T. *et al.* (2020) *Nutritional interventions for reducing the signs and symptoms of exercise-induced muscle damage and accelerate recovery in athletes: current knowledge, practical application and future perspectives*, *European Journal of Applied Physiology*. Springer Berlin Heidelberg. doi:10.1007/s00421-020-04432-3.
- Chamari, K. and phadulo, J. (2015) "Aerobic" and "Anaerobic" terms used in exercise physiology: a critical terminology reflection', *Sports Medicine - Open*, 1 (1), pp. 1–4. doi:<https://doi.org/10.1186/s40798-015-0012-1>.
- Cheikh, M. *et al.* (2019) 'Melatonin ingestion after exhaustive late-evening exercise attenuate muscle damage , oxidative stress , and inflammation during intense short term effort in the following day in teenage athletes', *Chronobiology International*, 00(00), pp. 1–12. doi:10.1080/07420528.2019.1692348.
- Chen, H.Y. *et al.* (2019) 'Effects of caffeine and sex on muscle performance and delayed-onset muscle soreness after exercise-induced muscle damage: A double-blind randomized trial', *Journal of Applied Physiology*, 127(3), pp. 798–805. doi:10.1152/jappphysiol.01108.2018.
- Cheng, D.L. *et al.* (2018) 'Significance of malondialdehyde, superoxide

- dismutasand endotoxin levels in budd-chiari syndrome in patients and a rat model', *Experimental and Therapeutic Medicine*, 16(6), pp. 5227–5235. doi:10.3892/etm.2018.6835.
- Contrò, V., Mancuso, E. and Proia, P. (2016) 'Delayed onset muscle soreness (DOMS) management: present state of the art', *Trends in Sport Sciences*, 3(23), pp. 121–127.
- Costache, A.D. *et al.* (2022) 'Cardiac Biomarkers in Sports Cardiology', *Journal of Cardiovascular Development and Disease*, 9(12). doi:10.3390/jcdd9120453.
- Daniela, M. *et al.* (2022) 'Effects of Exercise Training on the Autonomic Nervous System with a Focus on Anti-Inflammatory and Antioxidants Effects', *Antioxidants MDPI, Basel, Switzerland*, 11(350), p. 34.
- Dromant, M. *et al.* (2021) 'Lipid peroxidation as measured by chromatographic determination of malondialdehyde . Human plasma reference values in health and disease', *Archives of Biochemistry and Biophysics*, 709(108941). doi:10.1016/j.abb.2021.108941.
- Fischer, C.P. (2016) 'Interleukin-6 in acute exercise and training : what is the biological relevance', *Exercise Immunology Review*, 1991(May), pp. 6–33.
- Fu, Y. *et al.* (2021) 'Comparison of Energy Contributions and Workloads in Male and Female Badminton Players During Games Versus Repetitive Practices', *frontiers in physiology*, 12(June), pp. 1–9. doi:10.3389/fphys.2021.640199.
- Ganong, W.F. (2012) *fisiologi kedokteran*. 24th edn. Jakarta: Penerbit Buku Kedokteran EGC.
- Al Gifari, M.Y. and Pratama, Y.Y. (2022) 'Efek Pertahanan Tubuh : Inflamasi Setelah Latihan', *Jurnal Kajian Ilmiah Kesehatan dan Teknologi*, 4(1), pp. 33–45. doi:10.52674/jkikt.v4i1.60.
- Giuriato, G. *et al.* (2022) 'Capsaicin and Its Effect on Exercise Performance, Fatigue and Inflammation after Exercise', *Nutrients*, 14(2). doi:10.3390/nu14020232.
- Hacısevki, A. and Baba, B. (2018) 'An Overview of Melatonin as an Antioxidant Molecule: A Biochemical Approach', *melatonin* [Preprint].
- Hall, J.E. (2018) *Guyton and Hall Textbook of Medical Physiology*, Elsevier. 13th edn. Edited by W. M, A. Tanzil, and E. Ilyas. Amerika Serikat: Elsevier Inc.
- Haunhorst, S. *et al.* (2022) 'Acute effects of heavy resistance exercise on biomarkers of neuroendocrine-immune regulation in healthy adults: a systematic review', *Exercise immunology review*, 28, pp. 36–52.
- Ho, C.S. *et al.* (2020) 'Beneficial effects of a negative ion patch on eccentric exercise-induced muscle damage, inflammation, and exercise performance in badminton athletes', *Chinese Journal of Physiology*, 63(1), pp. 35–42. doi:10.4103/CJP.CJP_33_19.
- Hohor, S. *et al.* (2023) 'Impaired Melatonin Secretion , Oxidative Stress and Metabolic Syndrome in Night Shift Work', *Antioxidants MDPI, Basel, Switzerland*, 12.959, pp. 1–19.
- Hower, I.M., Harper, S.A. and Buford, T.W. (2018) 'Circadian rhythms, exercise,

and cardiovascular health', *Journal of Circadian Rhythms*, 16(1), pp. 1–8. doi:10.5334/jcr.164.

Iskandar, H. (2018) 'olahraga dan rekreasi', in *Kock Menari Indah di Udara*. Jakarta, pp. 1–7.

Jensen, M.A. *et al.* (2016) 'The effect of the number of consecutive night shifts on diurnal rhythms in cortisol, melatonin and heart rate variability (HRV): a systematic review of field studies', *International Archives of Occupational and Environmental Health*, 89(4), pp. 531–545. doi:10.1007/s00420-015-1093-3.

Kalangi, S.J.R. (2014) 'Perubahan Otot Rangka Pada Olahraga', *Jurnal Biomedik (Jbm)*, 6(3), pp. 1–7. doi:10.35790/jbm.6.3.2014.6323.

Kawamura, T. and Muraoka, I. (2018) 'Exercise-induced oxidative stress and the effects of antioxidant intake from a physiological viewpoint', *Antioxidants*, 7(9). doi:10.3390/antiox7090119.

Kenny, G.P. and Mcginn, R. (2017) 'Restoration of thermoregulation after exercise', *Journal of Applied Physiology*, 122(4), pp. 933–944. doi:10.1152/jappphysiol.00517.2016.

Kim, H.G. *et al.* (2015) 'Serum Levels of Stress Hormones and Oxidative Stress Biomarkers Differ according to Sasang Constitutional Type', *Evidence Based Complementary and Alternative Medicine*, 2015(737631), p. 6. doi:10.1155/2015/737631.

Kim, H.K. *et al.* (2022) 'Chrono-exercise: Time-of-day-dependent physiological responses to exercise', *Sports Medicine and Health Science* [Preprint], (August). doi:10.1016/j.smhs.2022.11.003.

Kim, J. and Bajaj, M. (2014) *Normal Adipose Tissue Biology: Adipocytokines and Inflammation, Pathobiology of Human Disease: A Dynamic Encyclopedia of Disease Mechanisms*. Elsevier Inc. doi:10.1016/B978-0-12-386456-7.02006-2.

Kline, C.E. and Youngstedt, S. (2017) 'Exercise and sleep', *Elsevier, In Encyclopedia of Sleep*, 114–119.

Koch, A.J., Pereira, R. and Machado, M. (2014) 'The creatine kinase response to resistance exercise', *Journal of Musculoskeletal Neuronal Interactions*, 14(1), pp. 68–77.

Kruk, J. *et al.* (2021) 'Exercise - induced oxidative stress and melatonin supplementation: current evidence', *The Journal of Physiological Sciences* [Preprint]. doi:10.1186/s12576-021-00812-2.

lauralee, S. (2018) *From Cells to Systems*. 9th edn. Edited by B. u Pendit. Jakarta: buku kedokteran EGC 2205.

Luo, S. *et al.* (2023) 'Effect of core training on skill-related physical fitness performance among soccer players: A systematic review', *Frontiers in Public Health*, 10, pp. 1–15. doi:10.3389/fpubh.2022.1046456.

Mode, W.J.A. *et al.* (2023) 'Effects of Morning Vs. Evening exercise on appetite, energy intake, performance and metabolism, in lean males and females', *Appetite*, 182(July 2022), p. 106422. doi:10.1016/j.appet.2022.106422.

Moreno-Perez, V. *et al.* (2020) 'The influence of a badminton competition with two

matches in a day on muscle damage and physical performance in elite junior badminton players', *Biology of Sport*, 37(2), pp. 195–201. doi:10.5114/BIOLSPORT.2020.94243.

Muhammad, D.H. and Qadir, F.A. (2017) 'Effects of Night Shift Working on Some Immunological ', *6th International Conference and Workshops on Basic and Applied Sciences* [Preprint], (October).

Muñoz-Cánoves, P. *et al.* (2013) 'Interleukin-6 myokine signaling in skeletal muscle: A double-edged sword?', *FEBS Journal*, 280(17), pp. 4131–4148. doi:10.1111/febs.12338.

Mushab, M., Hairrudin, H. and Abrori, C. (2020) 'Perbandingan Peningkatan Kadar Malondialdehid (MDA) Serum setelah Olahraga Pagi dan Malam Hari pada Orang Tidak Terlatih', *Jurnal Kesehatan Andalas*, 9(2), p. 211. doi:10.25077/jka.v9i2.1312.

Nailuvar, R. (2015) 'Olah Raga dan Radikal Bebas', pp. 329–336.

Nash, D. *et al.* (2022) '6 signaling in acute exercise and chronic training : Potential consequences for health and athletic performance', *scand j med Sci Sports*, 00(May), pp. 1–16. doi:10.1111/sms.14241.

Nugroho, S. (2015) 'Metode Latihan Sirkuit (Circuit Training) dalam Pembinaan Fisik Olahraga Bulutangkis', *olahraga*, pp. 1–11.

Okny, P. *et al.* (2014) 'Kadar Interleukin 6 (IL-6) Sebagai Indikator Progresivitas Penyakit Reumatoid Arthritis (Ra)', *Ilmiah Kedokteran*, 3(March).

Oosthuysen, T. and Bosch, A.N. (2017) 'The effect of gender and menstrual phase on serum creatine kinase activity and muscle soreness following downhill running', *Antioxidants*, 6(1), pp. 1–14. doi:10.3390/antiox6010016.

Peake, J.M. *et al.* (2016) 'Recovery from Exercise Muscle damage and inflammation during recovery from exercise', (122), pp. 599–570. doi:10.1152/jappphysiol.00971.2016.

Pelincek, M.J. *et al.* (2020) 'Efficacy of natural cycle IVF: a review of the literature', *Human reproduction update*, 8(2), pp. 129–139.

Powers, S.K., Radak, Z. and Ji, L.L. (2016) 'Exercise-induced oxidative stress: past, present and future', *Journal of Physiology*, 594(18), pp. 5081–5092. doi:10.1113/JP270646.

purwanto, bambang (2014) *Mekanisme kerja curcumin dalam mencegah kerusakan otot rangka mencit yang melakukan aktivitas eksentrik sesaat.*

Qadar punagi, A., Azis, A. and Mudassir (2013) 'Analisis kadar malondialdehid (MDA plasma) penderita polip hidung berdasarkan dominasi sel inflamasi pada pemeriksaan histopatologi', pp. 1–16.

Qishi, Z. *et al.* (2015) 'Regular Exercise Enhances the Immune Response Against Microbial Antigens Through Up-Regulation of Toll-like Receptor Signaling Pathways', *Cell Physiol Biochem*, (2015;37), pp. 735–746. doi:10.1159/000430391.

Rivai, A.T.O., Haslinda, D.S. and Patellongi, I. (2018) 'The effect of night futsal sport towards serum malondialdehyde (MDA) level of young adults', *Journal of*

Physics: Conference Series, 1028(1). doi:10.1088/1742-6596/1028/1/012104.

Rossi, F.E. *et al.* (2022) 'Exercise training - induced changes in immunometabolic markers in youth badminton athletes', *Scientific Reports*, pp. 1–10. doi:10.1038/s41598-022-19591-w.

Saleh, Y.A.R. (2014) 'Perbandingan Kemampuan Daya Tahan Jantung Dan Paru-Paru Antara Siswa Kelas Xi Pada Pembelajaran Pendidikan Jasmani Pagi Hari Dengan Siang Hari Di Sman 1 Kediri', *Jurnal Pendidikan Jasmani Dan Olahraga*, 02(01), pp. 306–312.

Sari, R. siska (2019) 'Pengaruh Pemberian Whey Protein Terhadap Pengurangan Gejala Kerusakan Otot Setelah Aktivitas Eksentrik', 4(2579–5910), pp. 1–20.

Saryono (2014) 'Peran enzim kreatin kinase sebagai marker dalam penyembuhan luka', in *Prosiding konferensi nasional PPNi. jawa tengah*, pp. 23–26.

Satterfield, B.C. *et al.* (2020) 'Interleukin-6 (IL-6) response to a simulated night-shift schedule is modulated by brain-derived neurotrophic factor (BDNF) genotype', *Chronobiology International*, 00(00), pp. 1–5. doi:10.1080/07420528.2020.1803901.

Scheller, J. *et al.* (2021) 'Biochimica et Biophysica Acta The pro- and anti-inflammatory properties of the cytokine interleukin-6', *biochimica et biophysica acta*, 1813(108941), pp. 878–888. doi:10.1016/j.bbamcr.2011.01.034.

Schulte, W., Bernhagen, J. and Bucala, R. (2013) 'Cytokines in sepsis: Potent immunoregulators and potential therapeutic targets - An updated view', *Mediators of Inflammation*, 2013. doi:10.1155/2013/165974.

Schuth, G. *et al.* (2021) 'Factors Influencing Creatine Kinase Response in Youth National Team Soccer Players', *Sports Health A Multidisciplinary Approach*, 10.1177(March). doi:10.1177/1941738121999387.

Silverthorn, dee unglaub (2018) *Human Silverthorn, dee unglaub (2018) Human Physiology. 8 th. global edition. Physiology. 8 th. global edition.*

Sinaga, F.A. (2016) 'reactive oxygen species', *generasi kampus*, 9(September), pp. 176–189.

Siracusa, J. *et al.* (2016) 'Circulating miRNAs as Biomarkers of Acute Muscle Damage in Rats', *American Journal of Pathology*, 186(5), pp. 1313–1327. doi:10.1016/j.ajpath.2016.01.007.

Souglis, A. *et al.* (2015) 'An International Journal Comparison of Inflammatory Responses and Muscle Damage Indices Following a Soccer , Basketball , Volleyball and Handball Game at an Elite Competitive Level', *Research in Sports Medicine An international Journal*, (January), pp. 59–75. doi:10.1080/15438627.2014.975814.

Supriatna *et al.* (2020) 'Model pH dengan parameter kualitas air pada tambak intensif udang vannamei (*Litopenaeus vannamei*)', *Fisheries and Marine Research*, 4(3), pp. 368–374.

Suryani, I. (2019) 'Kadar serum glutamat oxaloasetat transaminase (sgot) setelah bermain futsal pada pemain futsal malam terlatih dan tidak terlatih', 1(September), pp. 49–56.

Thompson, Paul D. et al. (2021) *General Principles of Exercise Prescription*. In: *ACSM's Guidelines for Exercise Testing and Prescription*. 11th edn. Philadelphia.

Tuaputimain, S., Lestari, E. and Sukeksi, A. (2020) 'Perbedaan Kadar Kadar Kreatinin Darah Sebelum Dan Sesudah Aktivitas Fisik', *JlabMed*, 4(2549–9939), pp. 47–51.

Wang, F. et al. (2021) 'Effects of Exercise-Induced ROS on the Pathophysiological Functions of Skeletal Muscle', *Oxidative Medicine and Cellular Longevity*, 2021. doi:10.1155/2021/3846122.

Xu, F. et al. (2022) 'Exercise-Induced Muscle Damage and Protein Intake: A Bibliometric and Visual Analysis', *Nutrients*, 14(20), pp. 1–20. doi:10.3390/nu14204288.

Yosika, G.F. (2020) *Perubahan Kadar Malondyaldehid (MDA) Akibat Moderate Interval Excercise (MIE) dan Moderate Continuous Exercise (MCE) pada Remaja Perempuan Obesitas*.

Yunus, M. (2016) 'Pengaruh aktivitas badminton pada malam hari terhadap stres oksidatif (Studi Kasus Pada Mahasiswa Universitas Negeri Malang)', *Jurnal Kepeleatihan Olahraga*, 1(1), pp. 1–5.

Yunus, N.M. (2020) 'Perbandingan Respon Akut Olahraga Futsal Pagi Dan Futsal Malam Terhadap Tekanan Parsial O₂ Dan Co₂ Pada Individu Dewasa Muda', 3, pp. 89–97.

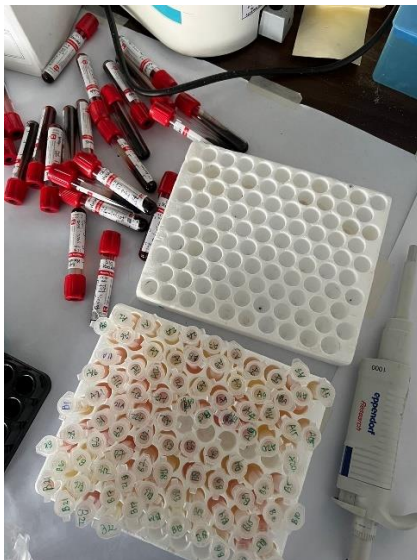
LAMPIRAN

LAMPIRAN 1 DOKUMENTASI KEGIATAN

Pengambilan Sampel Darah Atlet



Proses Pemisahan Serum Darah



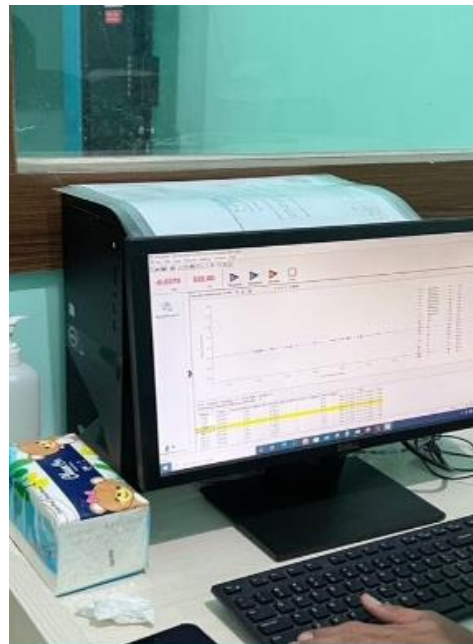
Pemeriksaan Interleukin-6



Pemeriksaan Creatin Kinase



Pemeriksaan MDA



LAMPIRAN 2 HASIL UJI STATISTIK

A. Karakteristik Sampel

USIA

Usia atlet pagi

		Frequenc y	Percent	Valid Percent	Cumulative Percent
Valid	10	3	12,5	13,6	13,6
	11	4	16,7	18,2	31,8
	12	3	12,5	13,6	45,5
	13	6	25,0	27,3	72,7
	14	5	20,8	22,7	95,5
	16	1	4,2	4,5	100,0
	Total	22	91,7	100,0	
Missing	System	2	8,3		
Total		24	100,0		

Usia atlet malam

		Frequenc y	Percent	Valid Percent	Cumulative Percent
Valid	11	6	25,0	27,3	27,3
	12	1	4,2	4,5	31,8
	13	5	20,8	22,7	54,5
	14	6	25,0	27,3	81,8
	15	4	16,7	18,2	100,0
	Total	22	91,7	100,0	
Missing	System	2	8,3		
Total		24	100,0		

Statistics

		u_pg	u_mlm
N	Valid	22	22
	Missing	2	2
Mean		12,45	13,05
Std. Error of Mean		,340	,319

Median	13,00	13,00
Mode	13	11 ^a
Std. Deviation	1,595	1,495
Variance	2,545	2,236
Range	6	4
Minimum	10	11
Maximum	16	15
Sum	274	287

a. Multiple modes exist. The smallest value is shown

IMT

		Statistics	
		imt_pagi	imt_mlm
N	Valid	22	22
	Missing	2	2
Mean		19,1545	20,6868
Std. Error of Mean		,40227	,46566
Median		18,5950	19,8500
Mode		18,13	18,14 ^a
Std. Deviation		1,88682	2,18413
Variance		3,560	4,770
Range		8,59	6,40
Minimum		17,14	18,14
Maximum		25,73	24,54
Sum		421,40	455,11

a. Multiple modes exist. The smallest value is shown

		IMT_PAGI			
		Frequency	Percent	Valid Percent	Cumulative Percent
Valid	17,14	1	4,5	4,5	4,5
	18,10	1	4,5	4,5	9,1
	18,13	4	18,2	18,2	27,3
	18,18	1	4,5	4,5	31,8
	18,32	1	4,5	4,5	36,4

18,39	1	4,5	4,5	40,9
18,40	1	4,5	4,5	45,5
18,57	1	4,5	4,5	50,0
18,62	1	4,5	4,5	54,5
18,95	1	4,5	4,5	59,1
19,00	1	4,5	4,5	63,6
19,02	1	4,5	4,5	68,2
19,04	1	4,5	4,5	72,7
19,17	2	9,1	9,1	81,8
19,40	1	4,5	4,5	86,4
20,40	1	4,5	4,5	90,9
23,28	1	4,5	4,5	95,5
25,73	1	4,5	4,5	100,0
Total	22	100,0	100,0	

IMT_MLM					
		Frequenc y	Percent	Valid Percent	Cumulative Percent
Valid	18,14	1	4,5	4,5	4,5
	18,22	1	4,5	4,5	9,1
	18,32	1	4,5	4,5	13,6
	18,57	1	4,5	4,5	18,2
	18,73	1	4,5	4,5	22,7
	18,82	1	4,5	4,5	27,3
	18,99	1	4,5	4,5	31,8
	19,16	1	4,5	4,5	36,4
	19,71	1	4,5	4,5	40,9
	19,75	1	4,5	4,5	45,5
	19,78	1	4,5	4,5	50,0
	19,92	1	4,5	4,5	54,5
	20,34	1	4,5	4,5	59,1
	20,39	1	4,5	4,5	63,6
	21,48	1	4,5	4,5	68,2
	22,29	1	4,5	4,5	72,7
	23,09	1	4,5	4,5	77,3
	23,18	1	4,5	4,5	81,8
	23,56	1	4,5	4,5	86,4
	23,60	1	4,5	4,5	90,9
	24,53	1	4,5	4,5	95,5

	24,54	1	4,5	4,5	100,0
	Total	22	100,0	100,0	

BERAT BADAN

Statistics

		PAGI	BB_PAG I
N	Valid	22	22
	Missing	0	0
Mean		1,00	41,73
Median		1,00	39,50
Mode		1	37 ^a
Range		0	38
Minimum		1	32
Maximum		1	70
Sum		22	918

a. Multiple modes exist. The smallest value is shown

Statistics

		MLM	BB_ML M
N	Valid	22	22
	Missing	0	0
Mean		2,00	47,23
Median		2,00	47,50
Mode		2	55
Range		0	23
Minimum		2	35
Maximum		2	58
Sum		44	1039

BB_PAGI

		Frequenc y	Percent	Valid Percent	Cumulative Percent
Valid	32	1	4,5	4,5	4,5
	33	2	9,1	9,1	13,6
	34	1	4,5	4,5	18,2

35	1	4,5	4,5	22,7
36	1	4,5	4,5	27,3
37	3	13,6	13,6	40,9
38	1	4,5	4,5	45,5
39	1	4,5	4,5	50,0
40	3	13,6	13,6	63,6
42	3	13,6	13,6	77,3
44	1	4,5	4,5	81,8
48	1	4,5	4,5	86,4
58	1	4,5	4,5	90,9
61	1	4,5	4,5	95,5
70	1	4,5	4,5	100,0
Total	22	100,0	100,0	

		BB_MLM			
		Frequenc		Valid	Cumulative
		y	Percent	Percent	Percent
Valid	35	1	4,5	4,5	4,5
	36	1	4,5	4,5	9,1
	37	1	4,5	4,5	13,6
	41	1	4,5	4,5	18,2
	42	1	4,5	4,5	22,7
	42	1	4,5	4,5	27,3
	43	1	4,5	4,5	31,8
	43	1	4,5	4,5	36,4
	44	1	4,5	4,5	40,9
	45	1	4,5	4,5	45,5
	47	1	4,5	4,5	50,0
	48	2	9,1	9,1	59,1
	49	1	4,5	4,5	63,6
	52	1	4,5	4,5	68,2
	53	1	4,5	4,5	72,7
	55	1	4,5	4,5	77,3
	55	3	13,6	13,6	90,9
	57	1	4,5	4,5	95,5
	58	1	4,5	4,5	100,0
	Total	22	100,0	100,0	

TINGGI BADAN

		Statistics	
		PAGI	TB_PAG I
N	Valid	22	22
	Missing	0	0
Mean		1,00	146,77
Median		1,00	145,00
Mode		1	145
Range		0	43
Minimum		1	132
Maximum		1	175
Sum		22	3229

		Statistics	
		TB_MLM	MLM
N	Valid	22	22
	Missing	0	0
Mean		151,08	2,00
Median		154,00	2,00
Mode		154	2
Range		34	0
Minimum		133	2
Maximum		167	2
Sum		3324	44

TB_PAGI					
		Freque ncy	Percent	Valid Percent	Cumulative Percent
Valid	132	1	4,5	4,5	4,5
	135	2	9,1	9,1	13,6
	136	1	4,5	4,5	18,2
	137	1	4,5	4,5	22,7
	140	1	4,5	4,5	27,3
	142	1	4,5	4,5	31,8

143	3	13,6	13,6	45,5
145	4	18,2	18,2	63,6
147	1	4,5	4,5	68,2
148	2	9,1	9,1	77,3
156	1	4,5	4,5	81,8
162	2	9,1	9,1	90,9
165	1	4,5	4,5	95,5
175	1	4,5	4,5	100,0
Total	22	100,0	100,0	

		TB_MLM			
		Frequenc y	Percent	Valid Percent	Cumulative Percent
Valid	133	1	4,5	4,5	4,5
	134	1	4,5	4,5	9,1
	134	1	4,5	4,5	13,6
	135	1	4,5	4,5	18,2
	138	1	4,5	4,5	22,7
	146	1	4,5	4,5	27,3
	147	1	4,5	4,5	31,8
	150	2	9,1	9,1	40,9
	154	3	13,6	13,6	54,5
	156	1	4,5	4,5	59,1
	157	1	4,5	4,5	63,6
	157	1	4,5	4,5	68,2
	157	1	4,5	4,5	72,7
	157	1	4,5	4,5	77,3
	159	1	4,5	4,5	81,8
	160	1	4,5	4,5	86,4
	160	1	4,5	4,5	90,9
	167	2	9,1	9,1	100,0
	Total		22	100,0	100,0

SUHU

		Statistics	
		PAGI	SUHU_PAG I
N	Valid	22	22

Missing	0	0
Mean	1,00	36,591
Median	1,00	36,500
Mode	1	37,0
Range	0	1,0
Minimum	1	36,0
Maximum	1	37,0
Sum	22	805,0

Statistics

		MLM	SUHU_ML M
N	Valid	22	22
	Missing	0	0
Mean		2,00	36,845
Median		2,00	36,850
Mode		2	37,0
Range		0	,8
Minimum		2	36,5
Maximum		2	37,3
Sum		44	810,6

SUHU_PAGI

		Frequenc y	Percent	Valid Percent	Cumulative Percent
Valid	36,0	6	27,3	27,3	27,3
	36,5	6	27,3	27,3	54,5
	37,0	10	45,5	45,5	100,0
	Total	22	100,0	100,0	

SUHU_MLM

		Frequenc y	Percent	Valid Percent	Cumulative Percent
Valid	36,5	3	13,6	13,6	13,6
	36,6	2	9,1	9,1	22,7
	36,7	4	18,2	18,2	40,9
	36,8	2	9,1	9,1	50,0
	36,9	1	4,5	4,5	54,5

	37,0	8	36,4	36,4	90,9
	37,3	2	9,1	9,1	100,0
	Total	22	100,0	100,0	

SISTOL

		Statistics	
		SISTOL_PA	SISTOL_ML
		GI	M
N	Valid	22	22
	Missing	2	2
Mean		108,64	106,82
Std. Error of Mean		2,488	2,120
Median		110,00	110,00
Mode		110	100
Std. Deviation		11,668	9,946
Variance		136,147	98,918
Range		40	40
Minimum		90	80
Maximum		130	120
Sum		2390	2350

SISTOL_PAGI					
		Frequency	Percent	Valid Percent	Cumulative Percent
Valid	90	4	16,7	18,2	18,2
	100	3	12,5	13,6	31,8
	110	8	33,3	36,4	68,2
	120	6	25,0	27,3	95,5
	130	1	4,2	4,5	100,0
	Total	22	91,7	100,0	
Missing	System	2	8,3		
Total		24	100,0		

SISTOL_MLM					
		Frequency	Percent	Valid Percent	Cumulative Percent
Valid	80	1	4,2	4,5	4,5
	100	9	37,5	40,9	45,5

	110	7	29,2	31,8	77,3
	120	5	20,8	22,7	100,0
	Total	22	91,7	100,0	
Missing	System	2	8,3		
Total		24	100,0		

DIASTOL

		Statistics	
		DIASTOL_P AGI	DIASTOL_M LM
N	Valid	22	22
	Missing	2	2
Mean		73,64	73,18
Std. Error of Mean		1,683	2,316
Median		80,00	70,00
Mode		80	70
Std. Deviation		7,895	10,861
Variance		62,338	117,965
Range		20	30
Minimum		60	60
Maximum		80	90
Sum		1620	1610

DIASTOL_PAGI

		Frequenc y	Percent	Valid Percent	Cumulative Percent
Valid	60	4	16,7	18,2	18,2
	70	6	25,0	27,3	45,5
	80	12	50,0	54,5	100,0
	Total	22	91,7	100,0	
Missing	System	2	8,3		
Total		24	100,0		

DIASTOL_MLM

		Frequenc y	Percent	Valid Percent	Cumulative Percent
Valid	60	6	25,0	27,3	27,3
	70	7	29,2	31,8	59,1
	80	5	20,8	22,7	81,8
	90	4	16,7	18,2	100,0
	Total	22	91,7	100,0	
Missing	System	2	8,3		
Total		24	100,0		

DENYUT NADI

		Statistics	
		NADI_PAG	NADI_ML
		I	M
N	Valid	22	22
	Missing	2	2
Mean		88,91	83,23
Std. Error of Mean		1,964	1,169
Median		90,00	84,00
Mode		96	88
Std. Deviation		9,211	5,485
Variance		84,848	30,089
Range		34	20
Minimum		68	72
Maximum		102	92
Sum		1956	1831

NADI_PAGI					
		Frequency	Percent	Valid Percent	Cumulative Percent
Valid	68	1	4,2	4,5	4,5
	72	1	4,2	4,5	9,1
	76	1	4,2	4,5	13,6
	78	1	4,2	4,5	18,2
	80	1	4,2	4,5	22,7
	84	1	4,2	4,5	27,3
	86	1	4,2	4,5	31,8
	88	2	8,3	9,1	40,9
	90	3	12,5	13,6	54,5
	94	3	12,5	13,6	68,2
	96	4	16,7	18,2	86,4
	98	1	4,2	4,5	90,9
	100	1	4,2	4,5	95,5
	102	1	4,2	4,5	100,0
	Total		22	91,7	100,0
Missing	System	2	8,3		
Total		24	100,0		

NADI_MLM					
		Frequency	Percent	Valid Percent	Cumulative Percent
Valid	72	1	4,2	4,5	4,5
	76	3	12,5	13,6	18,2
	78	1	4,2	4,5	22,7

	80	4	16,7	18,2	40,9
	84	4	16,7	18,2	59,1
	86	1	4,2	4,5	63,6
	88	5	20,8	22,7	86,4
	89	1	4,2	4,5	90,9
	90	1	4,2	4,5	95,5
	92	1	4,2	4,5	100,0
	Total	22	91,7	100,0	
Missing	System	2	8,3		
Total		24	100,0		

B. Uji Normalitas

Uji Normalitas	Shapiro Wilk Test			Keterangan
	Statistic	dF	P-Value	
IL-6 Latihan Malam	0,773	22	0,000	Tidak normal
IL-6 Latihan Pagi	0,607	22	0,000	Tidak normal
CK Latihan Malam	0,929	22	0,120	Normal
CK Latihan Pagi	0,938	22	0,090	Normal
MDA Latihan Malam	0,896	22	0,024	Tidak normal
MDA Latihan Pagi	0,911	22	0,049	Tidak normal

Tests of Normality il-6

	waktu	Kolmogorov-Smirnov ^a			Shapiro-Wilk		
		Statistic	df	Sig.	Statistic	df	Sig.
INTERLEUKIN	pagi	,307	22	,000	,607	22	,000
6	malam	,209	22	,013	,773	22	,000

a. Lilliefors Significance Correction

Tests of Normality

	waktu	Kolmogorov-Smirnov ^a			Shapiro-Wilk		
		Statistic	df	Sig.	Statistic	df	Sig.
CK	pagi	,227	22	,004	,924	22	,090
	malam	,169	22	,105	,929	22	,120

a. Lilliefors Significance Correction

Tests of Normality MDA

	waktu	Kolmogorov-Smirnov ^a			Shapiro-Wilk		
		Statistic	df	Sig.	Statistic	df	Sig.
MDA	pagi	,178	22	,067	,911	22	,049
	malam	,162	22	,139	,896	22	,024

a. Lilliefors Significance Correction

C. Uji Pengaruh IL-6

		Descriptives		Statistic	Std. Error
	waktu				
IINTERLEUKIN 6	pagi	Mean		2,1212	,34319
		95% Confidence Interval for Mean	Lower Bound	1,4075	
			Upper Bound	2,8349	
		5% Trimmed Mean		1,8657	
		Median		1,6844	
		Variance		2,591	
		Std. Deviation		1,60969	
		Minimum		,66	
		Maximum		8,62	
		Range		7,95	
	Interquartile Range		,75		
	Skewness		3,397	,491	
	Kurtosis		13,482	,953	
	malam	Mean		3,3778	,55148
		95% Confidence Interval for Mean	Lower Bound	2,2310	
			Upper Bound	4,5247	
		5% Trimmed Mean		3,0483	
		Median		2,5191	
		Variance		6,691	
		Std. Deviation		2,58669	
Minimum			1,05		
Maximum			12,10		
Range			11,04		
Interquartile Range		3,03			
Skewness		2,104	,491		
Kurtosis		5,299	,953		

Test Statistics il-6

IINTERLEUKIN6	
Mann-Whitney U	148,500
Wilcoxon W	401,500

Z	-2,195
Asymp. Sig. (2-tailed)	,028

a. Grouping Variable: waktu

Ranks IL-6				
	waktu	N	Mean Rank	Sum of Ranks
IINTERLEUKIN 6	pagi	22	18,25	401,50
	malam	22	26,75	588,50
	Total	44		

	Median (Minimum-Maksimum)	Nilai p
IL-6 atlet berlatih pagi (n = 22)	1,68 (0,66-8,62)	0,028 (P < 0,05)
IL-6 atlet berlatih malam (n = 22)	2,51 (1,05-12,10)	

Uji korelasi IL-6

Correlations			waktu	IINTERLEUKIN 6
Spearman's rho	waktu	Correlation Coefficient	1,000	,335*
		Sig. (2-tailed)	.	,026
		N	44	44
IINTERLEUKIN 6	IINTERLEUKIN 6	Correlation Coefficient	,335*	1,000
		Sig. (2-tailed)	,026	.
		N	44	44

*. Correlation is significant at the 0.05 level (2-tailed).

D. Uji pengaruh CK

	Mean (SD)	Nilai p
CK atlet berlatih pagi (n = 22)	178 (20,1) (122-128)	0,116 (P > 0,05)
CK atlet berlatih malam (n = 22)	179 (33,8) (120-272)	

Descriptives

	waktu		Statistic	Std. Error			
CK	pagi	Mean	178,64	4,295			
		95% Confidence Interval for Mean	Lower Bound	169,70			
			Upper Bound	187,57			
		5% Trimmed Mean	179,50				
		Median	179,50				
		Variance	405,861				
		Std. Deviation	20,146				
		Minimum	122				
		Maximum	218				
		Range	96				
		Interquartile Range	14				
		Skewness	-,787	,491			
		Kurtosis	2,173	,953			
			malam	Mean	179,00	7,222	
				95% Confidence Interval for Mean	Lower Bound	163,98	
					Upper Bound	194,02	
				5% Trimmed Mean	177,33		
Median	174,00						
Variance	1147,333						
Std. Deviation	33,872						
Minimum	120						
Maximum	272						
Range	152						
Interquartile Range	44						
Skewness	,705			,491			
Kurtosis	1,819			,953			

		Levene's Test for Equality of Variances					t-test for Equality of Means		95% Confidence Interval of the Difference	
		F	Sig.	t	df	Sig. (2-tailed)	Mean Difference	Std. Error Difference	Lower	Upper
CK	Equal variances assumed	2,581	,116	-,043	42	,966	-,364	8,402	-17,320	16,593
	Equal variances not assumed			-,043	34,205	,966	-,364	8,402	-17,436	16,708

E. Uji pengaruh MDA

	Median (Minimum- Maksimum)	Nilai p
MDA atlet berlatih pagi (n = 22)	1,10 (0,33-3,71)	0,024 (P < 0,05)
MDA atlet berlatih malam (n = 22)	2,05 (0,74-4,57)	

Descriptives

	waktu	Statistic	Std. Error	
MDA	pagi	Mean	1,4745	
		95% Confidence Interval for Mean		
		Lower Bound	1,0585	
		Upper Bound	1,8906	
		5% Trimmed Mean	1,4177	
		Median	1,1050	
		Variance	,880	
		Std. Deviation	,93827	
		Minimum	,33	
		Maximum	3,71	
		Range	3,38	
		Interquartile Range	1,62	
		Skewness	,732	,491
		Kurtosis	-,321	,953
malam	Mean	2,1145	,21145	
		95% Confidence Interval for Mean		
		Lower Bound	1,6748	
		Upper Bound	2,5543	
		5% Trimmed Mean	2,0540	
		Median	2,0500	
		Variance	,984	
		Std. Deviation	,99177	
		Minimum	,74	

Maximum	4,57	
Range	3,83	
Interquartile Range	1,23	
Skewness	1,149	,491
Kurtosis	1,550	,953

Tests of Normality

	waktu	Kolmogorov-Smirnov ^a			Shapiro-Wilk		
		Statistic	df	Sig.	Statistic	df	Sig.
MDA	pagi	,178	22	,067	,911	22	,049
	malam	,162	22	,139	,896	22	,024

a. Lilliefors Significance Correction

Test Statistics^a

MDA	
Mann-Whitney U	146,000
Wilcoxon W	399,000
Z	-2,253
Asymp. Sig. (2-tailed)	,024

a. Grouping Variable: waktu

Uji Korelasi MDA

Correlations

		MDA	waktu
Spearman's rho	MDA	1,000	,344*
	Correlation Coefficient		
	Sig. (2-tailed)	.	,022
	N	44	44
waktu	MDA	,344*	1,000
	Correlation Coefficient		
	Sig. (2-tailed)	,022	.
	N	44	44

*. Correlation is significant at the 0.05 level (2-tailed).

LAMPIRAN 3 SURAT PERSETUJUAN ETIK



KEMENTERIAN PENDIDIKAN, KEBUDAYAAN, RISET DAN TEKNOLOGI
UNIVERSITAS HASANUDDIN FAKULTAS KEDOKTERAN
KOMITE ETIK PENELITIAN UNIVERSITAS HASANUDDIN
RSPTN UNIVERSITAS HASANUDDIN
RSUP Dr. WAHIDIN SUDIROHUSODO MAKASSAR
Sekretariat : Lantai 2 Gedung Laboratorium Terpadu
JL.PERINTIS KEMERDEKAAN KAMPUS TAMALANREA KM.10 MAKASSAR 90245.



Contact Person: dr. Agussalim Bukhari, MMed, PhD, SpGK TELP. 081241850858, 0411 5780103, Fax : 0411-581431

REKOMENDASI PERSETUJUAN ETIK

Nomor : 220/UN4.6.4.5.31/ PP36/ 2023

Tanggal: 10 April 2023

Dengan ini Menyatakan bahwa Protokol dan Dokumen yang Berhubungan Dengan Protokol berikut ini telah mendapatkan Persetujuan Etik :

No Protokol	UH23020129	No Sponsor Protokol	
Peneliti Utama	Andi Ainun Zulkiah S.Ft Ftr	Sponsor	
Judul Peneliti	Pengaruh Latihan Pagi dan Malam terhadap Perubahan Kadar Malondialdehid, Interleukin-6, dan Creatin Kinase pada Atlet Badminton Kota Makassar		
No Versi Protokol	2	Tanggal Versi	5 April 2023
No Versi PSP	2	Tanggal Versi	5 April 2023
Tempat Penelitian	PB Manggala Kota Makassar, PB Maharewa Adiguna Sungguminasa Gowa Sulawesi Selatan.		
Jenis Review	<input type="checkbox"/> Exempted <input checked="" type="checkbox"/> Expedited <input type="checkbox"/> Fullboard Tanggal	Masa Berlaku 10 April 2023 sampai 10 April 2024	Frekuensi review lanjutan
Ketua KEP Universitas Hasanuddin	Nama Prof.Dr.dr. Suryani As'ad, M.Sc.,Sp.GK (K)	Tanda tangan	
Sekretaris KEP Universitas Hasanuddin	Nama dr. Agussalim Bukhari, M.Med.,Ph.D.,Sp.GK (K)	Tanda tangan	

Kewajiban Peneliti Utama:

- Menyerahkan Amandemen Protokol untuk persetujuan sebelum di implementasikan
- Menyerahkan Laporan SAE ke Komisi Etik dalam 24 Jam dan dilengkapi dalam 7 hari dan Laporan SUSAR dalam 72 Jam setelah Peneliti Utama menerima laporan
- Menyerahkan Laporan Kemajuan (progress report) setiap 6 bulan untuk penelitian resiko tinggi dan setiap setahun untuk penelitian resiko rendah
- Menyerahkan laporan akhir setelah Penelitian berakhir
- Melaporkan penyimpangan dari prokol yang disetujui (protocol deviation / violation)
- Mematuhi semua peraturan yang ditentukan

LAMPIRAN 4 SURAT KETERANGAN SELESAI MENELITI



KEMENTERIAN PENDIDIKAN, KEBUDAYAAN,
RISET, DAN TEKNOLOGI
UNIVERSITAS HASANUDDIN
RUMAH SAKIT UNHAS

Jl. Perintis Kemerdekaan Km. 10 Tamalanrea, Makassar 90245

Website www.rs.unhas.ac.id Email info@rs.unhas.ac.id Telp (0411) 591331 Fax (0411) 591332

Nomor : 6811/UN4.24.1.1/PT 01.05/2023
Hal : Surat Keterangan Selesai Penelitian

19 Mei 2023

Dengan ini menerangkan bahwa mahasiswa yang beridentitas :

Nama : Andi Ainun Zulkiah
NIM : P062212004
Institusi : Universitas Hasanuddin, Makassar
Kode Penelitian : 230509_4

Telah menyelesaikan penelitian di Rumah Sakit Unhas.

Terhitung pada tanggal : 19 Mei 2023

Dengan Sampel : Data Primer: Elisa

Dalam rangka penyusunan Tesis yang berjudul:

**"PENGARUH LATIHAN PAGI DAN MALAM TERHADAP PERUBAHAN KADAR
MALONDIALDEHID, INTERLEUKIN-6, DAN CREATIN KINASE PADA ATLET BADMINTON
KOTA MAKASSAR"**

Demikian surat keterangan ini dibuat dan diberikan kepada yang bersangkutan untuk dipergunakan seperlunya.

Manajer Pendidikan dan Penelitian,

dr. Aslim Taslim, Sp.Onk.Rad, M.Kes
NIP. 198304252012121003

LAMPIRAN 5 DAFTAR RIWAYAT HIDUP

Riwayat Hidup Peneliti

Nama Lengkap : Andi Ainun Zulkiah Surur
 Tempat / Tanggal Lahir : Bone, 15 Maret 1999
 Jenis Kelamin : Perempuan
 Agama : Islam
 No.Telepone / HP : 085242725056
 Email : Andiainunzulkiah@gmail.com
 Alamat Asal : Jl. Beringin, BTN Bumipabbulu, Blok A1 No. 04
 Sengkang Sulawesi Selatan ,Indonesia



Riwayat Pendidikan :

1. SDN 2 Sengkang (2005-2010)
2. SMP Negeri 2 Sengkang (2010-2013)
3. SMA Negeri 3 Sengkang (2013-2015)
4. Program Studi S1 Fisioterapi Fakultas Keperawatan Universitas Hasanuddin (2015-2019)
5. Profesi Fisioterapi Universitas Hasanuddin (2019-2021)
6. Program Studi S2 Ilmu biomedik konsentrasi fisiologi(2022-2023)

Riwayat Organisasi

1. Anggota Divisi Kewirausahaan HIMAFISIO (2017-2018)
2. Koordinator Divisi Keuangan BEM Keperawatan (2018-2019)
3. Anggota Departemen Kajian Perempuan HMI Komisariat Kedokteran Unhas (2017-2018)
4. Anggota Medical Muslim Family (M2F) FK Unhas (2017-2018)
5. Anggota Tim Bantuan Fisioterapi (TBF) Sternum (2017-2018)

HKI dan Proceeding

1. HKI Karya tulis : Analisis Zona Latihan dan Vital Sign Pada Atlet dan Non Atlet Bulutangkis yang Berlatih Pagi dan Malam Hari (EC00202357639)
2. Proceeding : Analysis of Training Zones and Vital Signs During Morning and Night Exercise in Athletes and Non Athletes Badminton (The 1st International Conference on Health and Medicine, Faculty of Medicine, Universitas Pattimura)