

DAFTAR PUSTAKA

- Anggrasari, H., Perdana, P., & Mulyo, J. H. (2021). Keunggulan Komparatif Dan Kompetitif Rempah-Rempah Indonesia Di Pasar Internasional. *Jurnal Agrica*, 14(1), 9–19. <https://doi.org/10.31289/agrica.v14i1.4396>
- Annisa, D. I. A. R. T. N. (2021). Daya Saing Kayu Manis.pdf. *Jurnal Ilmu Pertanian Indonesia*, 26(3), 363–369.
- APTIR. (2019). *THE RISE OF NON-TARIFF MEASURES*. Asia-Pacific and Trade Investment Report.
- Ardiyanti, S. T., & Saputri, A. S. (2018). DAMPAK NON TARIFF MEASURES (NTMs) TERHADAP EKSPOR UDANG INDONESIA (The Impact of Non Tariff Measures (NTMs) on Indonesia ' s Shrimp Export). *Buletin Ilmiah Litbang Perdagangan*, 12(1), 1–20.
- Arifin, A. (2014). Analisis Keunggulan Produk Kerajinan Rambut di Desa Karang Banjar Kecamatan Bojongsari, Purbalingga, 2007 (Pendekatan Revealed Comparative Advantage *Eko-Regional: Jurnal Pembangunan Ekonomi Wilayah*, 3(1). <http://www.jp.feb.unsoed.ac.id/index.php/eko-regional/article/view/400%0Ahttp://www.jp.feb.unsoed.ac.id/index.php/eko-regional/article/download/400/403>
- Ariyani, N. (2016). *DAMPAK NON TARIFF MEASURES (NTMs) TERHADAP EKSPOR REMPAH-REMPAH INDONESIA KE NEGARA TUJUAN EKSPOR*.
- Asrini, Y. N., Hodijah, S., & Nurhayani, N. (2021). Analisis Ekspor Kayu Manis Indonesia ke Amerika Serikat. *Jurnal Ekonomi Aktual*, 1(1), 45–56. <https://doi.org/10.53867/jea.v1i1.5>
- Ayuningsih, N. L. S. M., & Setiawina, N. D. (2014). Pengaruh Kurs Dollar amerika, Jumlah Produksi dan Luas Lahan Pada Volume Ekspor Kayu Manis Indonesia Periode 1992-2011 Serta Daya Saingnya. *E-Jurnal EP Unud*, 03(08), 366–375.
- Basuki, A. T. (2019). Modul Pratikum Eviews. *Danisa Media*, 1–120.
- BPPP, K. (2016). Potensi Ekspor Rempah-Rempah Indonesia. *Kementerian Perdagangan Indonesia*, 2016, 2.
- Comtrade, U. N. (2019). *Indonesian Cinnamon Export to the United States*.
- Comtrade, U. N. (2021). *Main Export Destination Country for Indonesian Cinnamon, 2021*.
- Curtis, D., & Irvine, I. (2017). *Macroeconomics Theory, Models & Policy an Open Text BASE TEXTBOOK Creative Commons License (CC BY-NC-SA)*.
- Destiarni, R. P., Triyasari, S. R., & Jamil, A. S. (2021). The Determinants of Indonesia's CPO Export in Non - Traditional Market. *E3S Web of Conferences*, 232, 1–12.

<https://doi.org/10.1051/e3sconf/202123202017>

Diphayana, W. (2018). *Perdagangan Internasional*.

Falatehan, A., & Wibowo, A. (2008). Analisis keunggulan komparatif dan kompetitif perusahaan komoditi jagung di kabupaten Grobogan. *Jurnal Agribisnis Dan Ekonomi Pertanian*, 2(1), 1–15.

FSSAI. (2018). *Cassia Cinammon*.

Haryadi, & Nopriyandi, R. (2017). Analisis Ekspor Kopi Indonesia. *Jurnal Paradigma Ekonomika*, 12(1), 192–203.

Hermawan, I. (2015). Daya Saing Rempah Indonesia di Pasar ASEAN Periode Pra dan Pasca Krisis Ekonomi Global The Competitiveness Level of Indonesian Spices in ASEAN Market Before and After Global Economic Crisis. *Buletin Ilmiah Litbang Perdagangan*, 9(2), 153–178. <http://jurnal.kemendag.go.id/bilp/article/view/6>

Hidayat, R. (2014). Analisis Komoditas Unggulan Sub Sektor Perkebunan Di Kabupaten Bengkayang Provinsi Kalimantan Barat. *Jurnal Social Economic of Agriculture*, 2(1), 54–66. <https://doi.org/10.26418/j.sea.v2i1.5119>

Humaira, F. A., & Rochdiani, D. (2021). FAKTOR-FAKTOR YANG MEMPENGARUHI VOLUME EKSPOR KAYU MANIS INDONESIA FACTORS AFFECTING THE EXPORT VOLUME OF INDONESIAN CINNAMON PENDAHULUAN Sektor andalan agraris , Indonesia sektor dari sebagian pertanian merupakan dan perekonomian besar Indonesia dan berp. *Mimbar Agribisnis: Jurnal Pemikiran Masyarakat Ilmiah Berwawasan Agribisnis*, 7(1), 437–449.

Irfansyah, M. A. (2022). ANALISIS DAYA SAING DAN FAKTOR-FAKTOR YANG MEMENGARUHI EKSPOR BUBUK KAYU MANIS INDONESIA KE NEGARA TUJUAN UTAMA MUHAMMAD ALDI IRFANSYAH.

Kemenperin. (2008). *Indonesia Eksportir Utama Kayu Manis*.

Kemenperin. (2020). *Eksportir Millenial Berhasil Ekspor 10 Ton Kayu Manis Ke Thailand*. Kementerian Perindustrian Republik Indonesia. <https://www.pertanian.go.id/home/?show=news&act=view&id=4746>

Khairunisa, G. R., & Novianti, T. (2018). Daya Saing Minyak Sawit Dan Dampak Renewable Energy Directive (Red) Uni Eropa Terhadap Ekspor Indonesia Di Pasar Uni Eropa. *Jurnal Agribisnis Indonesia*, 5(2), 125. <https://doi.org/10.29244/jai.2017.5.2.125-136>

Khazin, A. (2013). Persepsi Pemustaka Tentang Kinerja Pustakawan Pada Layanan Sirkulasi Di Perpustakaan Daerah Kabupaten Sragen. *Menejemen*, 30–39. http://eprints.undip.ac.id/40779/3/BAB_III.pdf

Lembang, M. B., & Pratomo, Y. (2013). *Ekspor Karet Indonesia ke-15 Negara Tujuan Utama*

Setelah Pemberlakuan Kebijakan ACFTA (Vol. 12, Issue 1).

Mankiw, N. G. (2017). *MACROECONOMICS*. Worth Publishers.

Mubarokah, I. (2020). Analisis Pengembangan Ekspor Kayu Manis Indonesia. *Ecoplan : Journal of Economics and Development Studies*, 3(1), 1–11. <https://doi.org/10.20527/ecoplan.v3i1.52>

Muharami, G., & Novianti, D. T. (2018). ANALISIS KINERJA EKSPOR KOMODITAS KARET INDONESIA KE AMERIKA LATIN. *Jurnal Agribisnis Indonesia*, 6(1), 15–26. <http://journal.ipb.ac.id/index.php/jagbi>

Mulyadi, M. (2013). Penelitian Kuantitatif Dan Kualitatif Serta Pemikiran Dasar Menggabungkannya. *Jurnal Studi Komunikasi Dan Media*, 15(1), 128. <https://doi.org/10.31445/jskm.2011.150106>

Narulita, S., Winandi, R., & Jahroh, S. (2014). Analisis Daya Saing Dan Strategi Pengembangan Agribisnis Kopi Indonesia. *Jurnal Agribisnis Indonesia*, 2(1), 63. <https://doi.org/10.29244/jai.2014.2.1.63-74>

Ningsih, A. (2013). *ANALISIS DAYA SAING DAN FAKTOR-FAKTOR YANG MEMENGARUHI PERMINTAAN MINYAK ATSIRI INDONESIA DI NEGARA TUJUAN EKSPOR ALTIKA NINGSIH*.

Nurhayati, E., Hartoyo, S., & Mulatsih, S. (2018). Pengembangan Pasar Ekspor Lada Indonesia. *Buletin Ilmiah Litbang Perdagangan*, 12(2), 267–288. <https://doi.org/10.30908/bilp.v12i2.335>

Nurhayati, E., Hartoyo, S., & Mulatsih, S. (2019). Analisis Pengembangan Ekspor Pala, Lawang, dan Kapulaga Indonesia. *Jurnal Ekonomi Dan Pembangunan Indonesia*, 19(2), 173–190. <https://doi.org/10.21002/jepi.v19i2.847>

Purnamasari, M., Hanani, N., & Huang, W.-C. (2014). Analisis Daya Saing Ekspor Kopi Indonesia Di Pasar Dunia. *Agricultural Socio-Economic Journal*, 14(1), 58–66.

Puspita, A., & Tantri, C. K. (2021). ANALISIS DAYA SAING KAYU MANIS (Cinnamon Burmanii). *DwijenAGRO*, 11(1), 46–50.

Radifan, F. (2014). Faktor-Faktor Yang Mempengaruhi Ekspor Crude Palm Oil Indonesia Dalam Perdagangan Internasional. *Economics Development Analysis Journal*, 3(2), 259–267. <https://doi.org/10.15294/edaj.v3i2.3829>

Raswatie, F. D. (2014). Hubungan Ekspor - Produk Domestik Bruto (PDB) di Sektor Pertanian Indonesia. *Journal of Agriculture, Resource and Environmental Economics*, 1(1), 28–42. <https://doi.org/10.29244/jaree.v1i1.11288>

Renita Sari, A., Budiman Hakim, D., & Anggraeni, L. (2014). *ANALISIS PENGARUH NON-TARIFF MEASURES EKSPOR KOMODITI CRUDE PALM OIL (CPO) INDONESIA KE*

- Rindayati, W., & Kristriana, O. W. (2018). Impact Analysis of Non-Tariff Measures (NTM) on Indonesian Tuna Exports to Major Destination Countries. *Jurnal Manajemen Dan Agribisnis*. <https://doi.org/10.17358/jma.15.2.172>
- Sa'diyah, P. F. I., & Darwanto, D. H. (2020). Indonesian cinnamon competitiveness and competitor countries in international market. *Agraris*, 6(2), 123–135. <https://doi.org/10.18196/agr.6296>
- Sari, A. R., Hakim, D. B., & Anggraeni, L. (2018). Analisis Pengaruh Non-Tariff Measures Ekspor Komoditi Crude Palm Oil (Cpo) Indonesia Ke Negara Tujuan Ekspor Utama. *Jurnal Ekonomi Dan Kebijakan Pembangunan*, 3(2), 111–135. <https://doi.org/10.29244/jekp.3.2.2014.111-135>
- Sayoga, P., & Tan, S. (2017). Analisis Cadangan Devisa Indonesia dan Faktor-Faktor yang Mempengaruhinya. *Jurnal Paradigma Ekonomika*, 12(1), 2085–1960.
- Supriana, T., Pane, T. C., & Khaliqi, M. (2022). Export of Indonesian cinnamon in international market: competitiveand performance. *Journal of Central European Agriculture*, 23(3), 704–713. <https://doi.org/10.5513/JCEA01/23.3.3601>
- Suranta Karo-Sekali, A., & Supriana, T. (2021). DAMPAK SANITARY AND PHYTOSANITARY (SPS) DAN TECHNICAL BARRIER TO TRADE (TBT) TERHADAP EKSPOR KOMODITAS TEH DI INDONESIA. 5(1).
- Syam, H. (2019). ANALISIS DAYA SAING USAHATANI JAGUNG DAN KEDELAI DI SULAWESI SELATAN.
- Tika Carolina, L., & Aminata, J. (2019). ANALISIS DAYA SAING DAN FAKTOR YANG MEMPENGARUHI EKSPOR BATU BARA. *DIPONEGORO JOURNAL OF ECONOMICS*, 1. <https://ejournal2.undip.ac.id/index.php/dje>
- Tristi, M., & Rifin, A. (2021). Dampak Kebijakan Tarif dan Non-tarif Negara-Negara Importir atas Ekspor Tuna Olah Indonesia (Impact of Tariff and Non-tariff Policies of Importing Countries on Indonesian Processed Tuna Exports). 26(3), 468–478. <https://doi.org/10.18343/jipi.26.3.468>
- UNCTAD. (2013). NON-TARIFF MEASURES TO TRADE : Economic and Policy Issues for Developing Countries. *United Nations Conference on Trade and Development, United Nat*(UNCTAD/DITC/TAB/2012/1), 1–107.
- UNCTAD. (2019). International Classification of Non-Tariff Measures 2019. In *International Classification of Non-Tariff Measures 2019*. <https://doi.org/10.18356/33bf0bc6-en>
- UNCTAD. (2021). *Non-tariff measures from A to Z*.
- Wijaya, T. N. (2011). *Daya Saing Komoditi Perkebunan Indonesia Di Negara Importir Utama*

Dan Dunia. <https://text-id.123dok.com/document/eqo4kdjz-daya-saing-produk-perikanan-indonesia-di-beberapa-negara-importer-utama-dan-dunia.html>

WITS. (2019). *Measures Distribution by Country*. World Integrated Trade Solution.

Zainuddin, Z. (2020). Hilirisasi Daya Saing Dan Potensi Pengembangan Pasar Produk Karet Indonesia Di Negara Asean5. *Jurnal MeA (Media Agribisnis)*, 5(2), 102. <https://doi.org/10.33087/mea.v5i2.81>

Zuhair, R. (2021). *DAMPAK NON-TARIFF MEASURES (NTMs) TERHADAP EKSPOR BIOFARMAKA INDONESIA KE NEGARA TUJUAN EKSPOR RAHMAT ZUHAIR DEPARTEMEN ILMU EKONOMI*.

Zuhdi, F., & Agribisnis, D. (2016). Analisis Daya Saing Ekspor Kopi Indonesia Dan Vietnam Di Pasar Asean 5 Competitiveness Analysis of Indonesian and Vietnam Coffee Export in Asean 5 Market. *Habitat*, 26(3), 152–162. <file:///C:/Users/Adilla/Downloads/208-667-2-PB.pdf>

LAMPIRAN

Lampiran 1. Uji Chow

Redundant Fixed Effects Tests			
Equation: Untitled			
Test cross-section fixed effects			
Effects Test	Statistic	d.f.	Prob.
Cross-section F	26.188597	(8,92)	0.0000
Cross-section Chi-square	128.197139	8	0.0000

Lampiran 2. Uji Hausman

Correlated Random Effects - Hausman Test			
Equation: Untitled			
Test cross-section random effects			
Test Summary	Chi-Sq. Statistic	Chi-Sq. d.f.	Prob.
Cross-section random	209.355263	7	0.0000

** WARNING: estimated cross-section random effects variance is zero.

Lampiran 3. Hasil Estimasi Fixed Effect Model

Dependent Variable: LOG_VEIJT
 Method: Panel EGLS (Cross-section SUR)
 Date: 07/29/23 Time: 01:39
 Sample: 2010 2021
 Periods included: 12
 Cross-sections included: 9
 Total panel (balanced) observations: 108
 Linear estimation after one-step weighting matrix

Variable	Coefficient	Std. Error	t-Statistic	Prob.
C	272.4362	10.49684	25.95411	0.0000
LOG_PDBJT	-1.612886	0.110977	-14.53351	0.0000
LOG_HEIJT	1.113636	0.008723	127.6596	0.0000
LOG_NTRIJT	1.201159	0.114184	10.51950	0.0000
LOG_JEIJT	0.008332	0.002895	2.877764	0.0050
LOG_POPJT	-14.35037	0.599256	-23.94699	0.0000
CSPSJT	-0.002359	0.000418	-5.643248	0.0000
CTBTJT	0.004080	0.000511	7.990231	0.0000

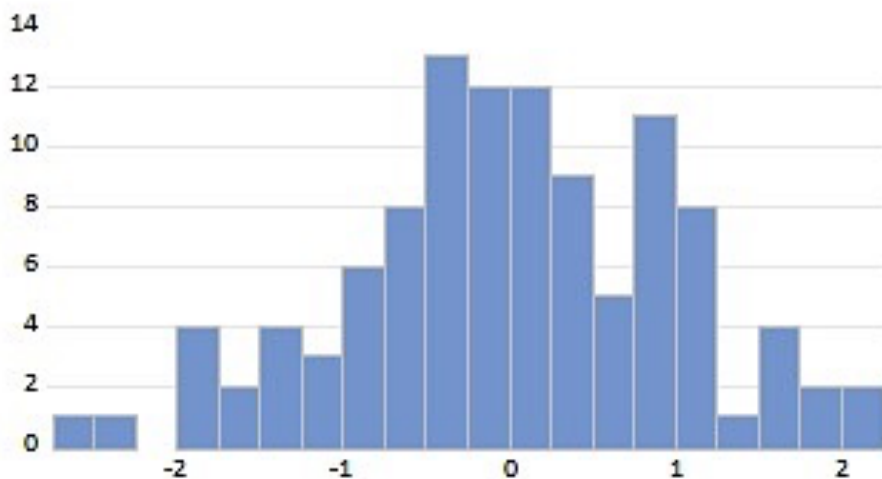
Effects Specification

Cross-section fixed (dummy variables)

Weighted Statistics			
R-squared	0.998983	Mean dependent var	57.57926
Adjusted R-squared	0.998817	S.D. dependent var	131.6373
S.E. of regression	1.058207	Sum squared resid	103.0218
F-statistic	6023.978	Durbin-Watson stat	1.985195
Prob(F-statistic)	0.000000		

Unweighted Statistics			
R-squared	0.983571	Mean dependent var	12.28542
Sum squared resid	9.105927	Durbin-Watson stat	0.628467

Lampiran 4. Uji Normalitas



Series: Standardized Residuals	
Sample 2010 2021	
Observations 108	
Mean	2.22e-15
Median	0.002803
Maximum	2.074398
Minimum	-2.505630
Std. Dev.	0.981234
Skewness	0.194286
Kurtosis	2.878927
Jarque-Bera	0.745410
Probability	0.688868

Lampiran 5. Uji Multikolinearitas

	LOG_PDBJT	LOG_HEJBT	LOG_NTRIJT	LOG_JEJBT	LOG_POPJT	CSPSJT	CTBTJT
LOG_P...	1.000000	-0.205245	0.795358	0.205886	-0.664212	0.015099	0.036861
LOG_H...	-0.205245	1.000000	-0.093851	0.129581	0.166741	-0.054743	0.118715
LOG_N...	0.795358	-0.093851	1.000000	0.319184	-0.297172	-0.255448	-0.097526
LOG_J...	0.205886	0.129581	0.319184	1.000000	-0.009632	-0.098623	-0.063423
LOG_P...	-0.664212	0.166741	-0.297172	-0.009632	1.000000	0.150820	-0.043134
CSPSJT	0.015099	-0.054743	-0.255448	-0.098623	0.150820	1.000000	0.613941
CTBTJT	0.036861	0.118715	-0.097526	-0.063423	-0.043134	0.613941	1.000000

Lampiran 6. Bukti Submit Jurnal

The screenshot displays a journal submission interface. At the top, it shows the journal name 'Jurnal Agribisnis' and the user 'lilyfebriyanti'. The submission title is 'ANALISIS DAYA SAING DAN PENGARUH KEBIJAKAN NON-TARIFF MEASURES (NTM) TERHADAP EKSPOR KAYU MANIS INDONESIA DI NEGARA TUJUAN EKSPOR' by Lily Febriyanti Zulkifli. The submission status is 'Submission', with options for 'Review', 'Copyediting', and 'Production'. Under 'Submission Files', there is one file: 'lilyfebriyanti, Jurnal_Lily Febriyanti Zulkifli_Unhas.pdf (2)' uploaded on August 11, 2023, categorized as 'Data Analysis'. A 'Download All Files' button is present. The 'Pre-Review Discussions' section is currently empty, showing 'No Items'.