

DAFTAR PUSTAKA

- Annels, A, E, 1991, *Mineral Deposit Evaluation: A Practical Approach*, Chapman & Hall: London,
- Bertoli, O,, Paul, A,, Casley, Z,, & Dunn, D,, 2013, Geostatistical drillhole spacing analysis for coal resource classification in the Bowen Basin, Queensland, *International Journal of Coal Geology*, 112, 107–113, <https://doi.org/10.1016/j.coal.2012.12.010>
- Brand N,, Butt C,, Elias M,, 1998, EXPLORATION MODEL: The Cause shear- controlled Ni-oxide and associated Mn-Co--Ni deposit, Western Australia, *AGSO Journal of Australian Geology & Geophysics*, pp, 81-88,
- Butt, C, R,, & Cluzel, D, (2013), Nickel laterite *ore* deposits: weathered serpentinites, *Elements*, 9(2), 123-128,
- Butt, C, & Zeegers, H,, 1992, Regolith Exploration Geochemistry in Tropical and Subtropical Terrains, *Handbook of Exploration Geochemistry*, Volume 4, p, 605pp,
- Bohling G, 2005, *Introduction To Geostatistics and Variogram Analysis*, Kansas Geology Survey
- Coombes, J, 2008, *The Art and Science of Resource Estimation*, Coombes Capability: Perth,
- Cressie, N, A, C, 1990, *The Origins of Kriging, Mathematical Geology*,
- Cressie, N, A, C, 1993, *Statistics For Spatial Data*, New York: John Wiley and Sons, Inc,
- Elias, M,, 2002, *Nickel Laterite Deposits-Eological Overview, Resources And Exploitation, In Giant Ore Deposit: Characteristics, Genesis And Exploration*, Centre Ore Deposit Res,, Univ, Tasmania, Spec, Pub 4, 205-220,
- Geim, A, K,, & Grigorieva, I, V, (2013), Van der Waals heterostructures, *Nature*, 499(7459), 419-425,
- Geovariances, 2016, Drill Hole Spacing Analysis, Retrieved from <https://www.geovariances.com/wpcontent/uploads/2016/07/geovariances-white-paper-dhsa.pdf>
- Golightly, J,, 1979, Nickelferous Laterites: A General Description, *Journal of Electrostatics*, pp, 3-23,
- Golightly, J, P, 1981, *Nickeliferous Laterite Deposits: Economic Geology*, 75, pp, 710-735,
- Hartman, H, L, *SME Mining Engineering Handbook 2nd Edition Volume 1*, Society for Mining, Metallurgy and Exploration, Inc, Littleton: Colorado,
- Heriawan, M, N,, Noor, R, H,, Syafrizal, 2011, Exploratiom Drilling spacing Optimization of Coal deposit based on geostatical apparoach, with a case study on coal

deposit at warukin formation, south Kalimantan, Proceeding of annual professional meeting XX of Indonesian mining professional association(PERHAPI), 11-12, Lombok, Nusa tenggara barat

- Heriawan, M, N,, Pillayati, P,, Widodo, L, E,, & Widayat, A, H,, 2020, Drill hole spacing optimization of non-stationary data for seam thickness and total sulfur: A case study of coal deposits at Balikpapan Formation, Kutai Basin, East Kalimantan, *International Journal of Coal Geology*, 223(March), 103466, <https://doi.org/10.1016/j.coal.2020.103466>
- Idrus, A,, Kolb, J,, & Meyer, F, M, (2007), Chemical Composition of Rock-Forming Minerals in Copper–Gold-Bearing Tonalite Porphyries at the Batu Hijau Deposit, Sumbawa Island, Indonesia: Implications for Crystallization Conditions and Fluorine–Chlorine Fugacity, *Resource Geology*, 57(2), 102-113,
- Ilyas, A,, Kashiwaya, K, and Koike, K, 2016, Ni Grade Distribution in Laterite Characterized from Geostatistics, Topograph and the Paleo-Groundwater System in Sorowako, Indonesia, *Journal of Geochemical Exploration*, 165(2016), pp, 174-188,
- Isaaks, E, H, & Srivastava, R, M, 1989, *Applied Geostatistics*, New York: Oxford University Press, P, 143,
- Kadarusman, A,, Miyashita, S,, Maruyama, S, and Parkinson, 2004, Petrology, Geochemistry and Paleogeographic Reconstruction of the East Sulawesi Ophiolite, Indonesia, *Tectonophysics*, 392(2004), pp, 55-83,
- KCMI, 2017, *Kode Pelaporan Hasil Eksplorasi, Sumberdaya Mineral dan Cadangan Bijih*, Jakarta, Hal, 10-16,
- Kleijnen, J,P, & Van Beers, W, C, 2004, Application-Driven Sequential Designs for Simulation Experiments: Kriging Metamodelling, *Journal of the Operational Research Society*,
- Linchenat, A,, & Shirokova, I, (1964), Individual characteristics of the nickeliferous iron (laterite) deposits of the northeastern part of Cuba (Pinares de Mayari, Nicaro and Moa), In *24th International Geological Congress, Montreal, pt* (Vol, 14, pp, 172-187),
- Matheron, G, (1963), Principles of geostatistics, *Economic geology*, 58(8), 1246-1266,
- Mubroto B,, Briden J,C,, McClelland E,, Hall R,, 1994, Paleomagnetism of the Balantak ophiolite, Sulawesi, *Earth Planet, Sci, Lett*, Vol,125, pp,193–209
- Rusmana, E,, Sukindo, Sukarna, D,, Haryono, E,, dan Simanjuntak, T,, O, 1993, *Peta Geologi Lembar Lasusua Kendari, Sulawesi*, Pusat Penelitian dan Pengembangan Geologi: Bandung,
- Saikia, K,, Sarkar,, B,C, 2006 Exploration Drilling Optimisation using geostatics: A case in jharia coalfield India, *International journal of earth science (Trans, Inst, Min, Metal,B,)*,115 No,1,13-12
- Sinclair, A,J,, Blackwell, G,H,, 2002, *Applied Mineral Inventory Estimation*, UK: Cambridge University Press, pp, 381

- Suratman, 2000, Geology of Laterite Nickel Deposit in Sorowako Area, South Sulawesi Province,, Bandung, Indonesia, In Proceedings of 29th Indonesian association of geologists, (pp, 37-43),
- Stevenson, A, W, (1994), Thermal vibrations and bonding in GaAs: an extended-face crystal study, *Acta Crystallographica Section A: Foundations of Crystallography*, 50(5), 621-632,
- Taghvaeenejad, M,, Shayestefar, M, R,, & Moarefvand, P, (2021), Applying Analytical and Quantitative Criteria to Estimate Block Model Uncertainty and Mineral Reserve Classification: A Case Study: Khoshumi Uranium Deposit in Yazd, *Journal of Mining and Environment*, 12(2), 425-441,
- Villeneuve, M,, Gunawan, W,, Cornee, J, J,, & Vidal, O, (2002), Geology of the central Sulawesi belt (eastern Indonesia): constraints for geodynamic models, *International Journal of Earth Sciences*, 91(3), 524-537,

LAMPIRAN

LAMPIRAN 1
CONTOH DATA BOR

DATA COLLAR

Hole_id	y	x	z	Max_depth(m)
TBA110DR	9624876	413145,4	131,056	15
TBA111DR	9624876	413244,2	115,041	19
TBA112DR	9624876	413345,5	95,647	16
TBA113D	9624875	413450,5	86,907	13
TBA114D	9624876	413547,3	100,7	21
TBA125D	9624977	413144,8	129,861	16
TBA126DR	9624976	413245,2	117,23	25
TBA127D	9624982	413355,4	95,17	6
TBA128DR	9624975	413443,8	80	15
TBA129DR	9624977	413545,5	85,21	20
TBA142DR	9625077	413343,8	90,755	13
TBA143DR	9625076	413444,7	82,472	14
TBA144DR	9625075	413545,9	74,237	19
TBB289DR	9624826	413146,3	140,657	11
TBB290DR	9624825	413195	129,583	20
TBB291DR	9624826	413245	120,144	18
TBB292DR	9624827	413294	105,075	19
TBB293DR	9624826	413345,2	96,774	11
TBB294DR	9624828	413395	88,551	10
TBB295DR	9624827	413444,3	90,315	14
TBB296DR	9624826	413493,2	102,642	25
TBB297DR	9624827	413545,6	109,944	19
TBB319DR	9624875	413195	122,439	13
TBB320D	9624873	413292,5	104,437	12
TBB321DR	9624877	413394,1	87,152	18
TBB322D	9624875	413491,1	91,806	15
TBB339DR	9624925	413195,5	123,27	20
TBB340D	9624926	413241,6	115,24	18
TBB341DR	9624925	413294,9	105,574	14
TBB342DR	9624926	413345,5	92,994	16
TBB343DR	9624926	413395,7	84,363	25
TBB344DR	9624926	413444,3	81,615	21
TBB345DR	9624925	413495,6	83,466	24
TBB346DR	9624928	413543	90,407	25
TBB367D	9624978	413098	137,595	20
TBB368D	9624975	413196	125,888	16
TBB369DR	9624975	413294	107,958	20
TBB370DR	9624977	413394,9	85,603	11
TBB371DR	9624976	413497,3	80,543	24
TBB387D	9625028	413145,1	122,808	16
TBB388DR	9625026	413194,4	121,286	16
TBB389DR	9625027	413246	113,24	13

DATA ASSAY

Hole_id	Sample_Id	From	To	Ni
TBA110DR	AKP10311	0	1	0,99
TBA110DR	AKP10312	1	2	1,16
TBA110DR	AKP10313	2	3	1,17
TBA110DR	AKP10314	3	4	1,25
TBA110DR	AKP10315	4	5	1,34
TBA110DR	AKP10316	5	6	2
TBA110DR	AKP10317	6	7	2,52
TBA110DR	AKP10318	7	8	2,73
TBA110DR	AKP10319	8	9	2,15
TBA110DR	AKP10320	9	10	2,11
TBA110DR	AKP10321	10	11	2,15
TBA110DR	AKP10322	11	12	1,63
TBA110DR	AKP10323	12	13	2,08
TBA110DR	AKP10324	13	14	2,07
TBA110DR	AKP10325	14	15	0,98
TBA111DR	AKP10326	0	1	0,94
TBA111DR	AKP10327	1	2	1,08
TBA111DR	AKP10328	2	3	1,14
TBA111DR	AKP10329	3	4	1,2
TBA111DR	AKP10330	4	5	1,13
TBA111DR	AKP10331	5	6	1,17
TBA111DR	AKP10332	6	7	1,71
TBA111DR	AKP10333	7	8	2
TBA111DR	AKP10334	8	9	1,52
TBA111DR	AKP10335	9	10	1,95
TBA111DR	AKP10336	10	11	2,48
TBA111DR	AKP10337	11	12	1,74
TBA111DR	AKP10338	12	13	1,74
TBA111DR	AKP10339	13	14	1,86
TBA111DR	AKP10340	14	15	1,91
TBA111DR	AKP10341	15	16	2,59
TBA111DR	AKP10210	16	17	2,29
TBA111DR	AKP10211	17	18	2
TBA111DR	AKP10212	18	19	1,09
TBA112DR	AKP10213	0	1	1,13
TBA112DR	AKP10214	1	2	1,24
TBA112DR	AKP10215	2	3	1,33
TBA112DR	AKP10216	3	4	1,54
TBA112DR	AKP10217	4	5	1,34
TBA112DR	AKP10218	5	6	1,34
TBA112DR	AKP10219	6	7	1,49
TBA112DR	AKP10220	7	8	2,09

DATA GEOLOGI

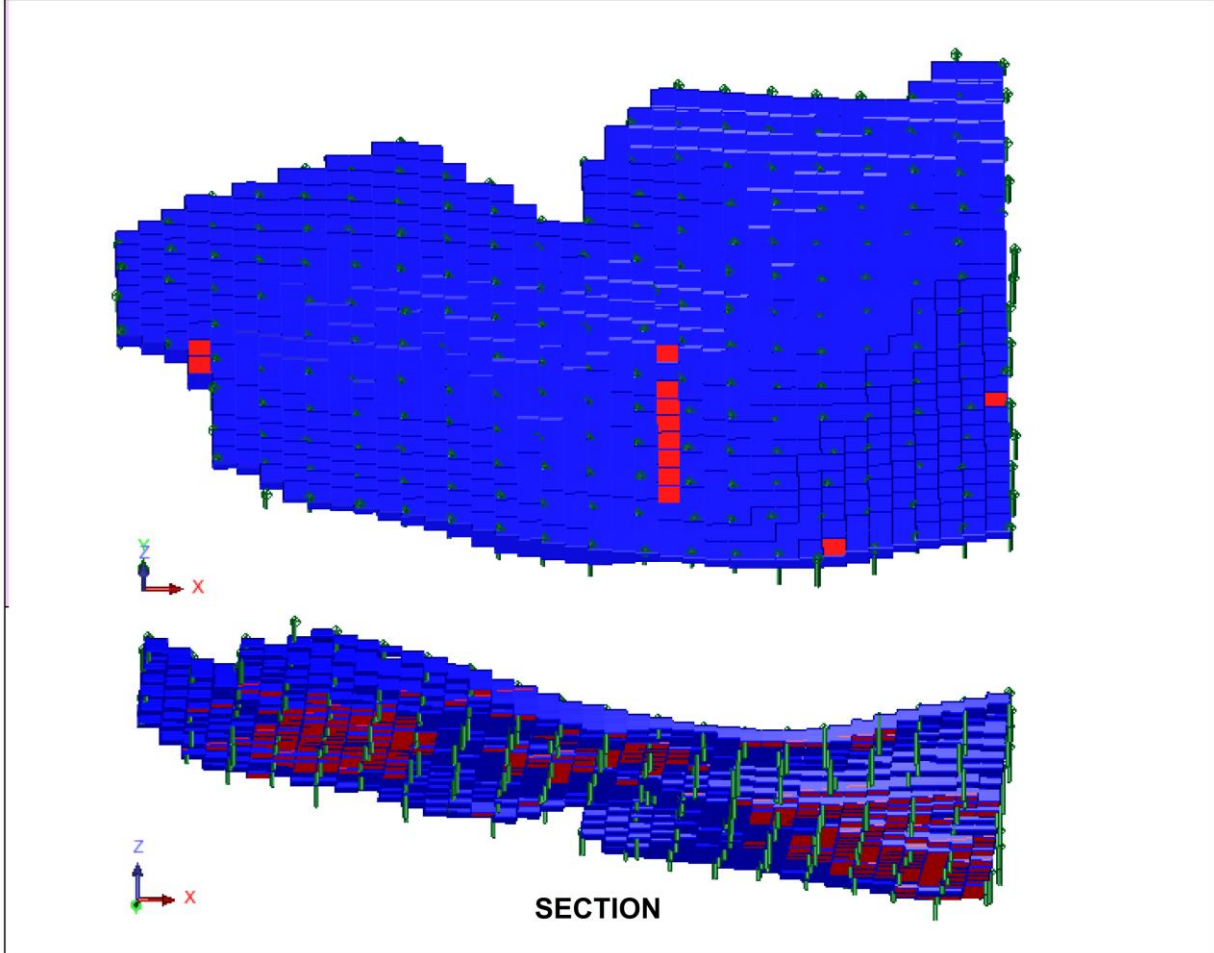
Hole_id	Sample_Id	From	To	Layer
TBA110DR	AKP10311	0	1	LIM
TBA110DR	AKP10312	1	2	LIM
TBA110DR	AKP10313	2	3	LIM
TBA110DR	AKP10314	3	4	LIM
TBA110DR	AKP10315	4	5	LIM
TBA110DR	AKP10316	5	6	SAP
TBA110DR	AKP10317	6	7	SAP
TBA110DR	AKP10318	7	8	SAP
TBA110DR	AKP10319	8	9	SAP
TBA110DR	AKP10320	9	10	SAP
TBA110DR	AKP10321	10	11	SAP
TBA110DR	AKP10322	11	12	SAP
TBA110DR	AKP10323	12	13	SAP
TBA110DR	AKP10324	13	14	SAP
TBA110DR	AKP10325	14	15	BRK
TBA111DR	AKP10326	0	1	LIM
TBA111DR	AKP10327	1	2	LIM
TBA111DR	AKP10328	2	3	LIM
TBA111DR	AKP10329	3	4	LIM
TBA111DR	AKP10330	4	5	LIM
TBA111DR	AKP10331	5	6	LIM
TBA111DR	AKP10332	6	7	SAP
TBA111DR	AKP10333	7	8	SAP
TBA111DR	AKP10334	8	9	SAP
TBA111DR	AKP10335	9	10	SAP
TBA111DR	AKP10336	10	11	SAP
TBA111DR	AKP10337	11	12	SAP
TBA111DR	AKP10338	12	13	SAP
TBA111DR	AKP10339	13	14	SAP
TBA111DR	AKP10340	14	15	SAP
TBA111DR	AKP10341	15	16	SAP
TBA111DR	AKP10210	16	17	SAP
TBA111DR	AKP10211	17	18	SAP
TBA111DR	AKP10212	18	19	BRK
TBA112DR	AKP10213	0	1	LIM
TBA112DR	AKP10214	1	2	LIM
TBA112DR	AKP10215	2	3	LIM
TBA112DR	AKP10216	3	4	LIM
TBA112DR	AKP10217	4	5	LIM
TBA112DR	AKP10218	5	6	LIM
TBA112DR	AKP10219	6	7	LIM
TBA112DR	AKP10220	7	8	SAP

DATA SURVEY

Hole_id	Max_depth	Dip	Azimuth
TBC187D	22	-90	0
TBC188D	10	-90	0
TBC177D	9	-90	0
TBB441DR	10	-90	0
TBC178D	8	-90	0
TBB442DR	6	-90	0
TBC179D	9	-90	0
TBB443DR	7	-90	0
TBC180D	14	-90	0
TBB444D	7,5	-90	0
TBC168D	4,47	-90	0
TBC169D	12	-90	0
TBC170D	14,3	-90	0
TBC171D	13	-90	0
TBC172D	16	-90	0
TBC173D	15,6	-90	0
TBC174D	19	-90	0
TBC175D	18	-90	0
TBC176D	16	-90	0
TBC161D	11	-90	0
TBC163D	14	-90	0
TBA142DR	13	-90	0
TBC164D	10	-90	0
TBB419DR	11	-90	0
TBC165D	10	-90	0
TBA143DR	14	-90	0
TBC166D	21	-90	0
TBB420DR	13	-90	0
TBC167D	17	-90	0
TBA144DR	19	-90	0
TBC145D	17	-90	0
TBC146D	6	-90	0
TBC147D	19	-90	0
TBC148D	11	-90	0
TBC149D	19	-90	0
TBC152D	20	-90	0
TBC153D	13	-90	0
TBC154D	13	-90	0
TBC155D	15	-90	0
TBC156D	14	-90	0
TBC157D	16	-90	0
TBC158D	20	-90	0

LAMPIRAN 2

**BLOK MODEL SETIAP SIMULASI VARIASI SPASI
TITIK BOR**



BLOK MODEL ESTIMASI

25 M X 25 M

ZONA LIMONIT



LEGEND

- ORE
- WASTE
- LUBANG BOR

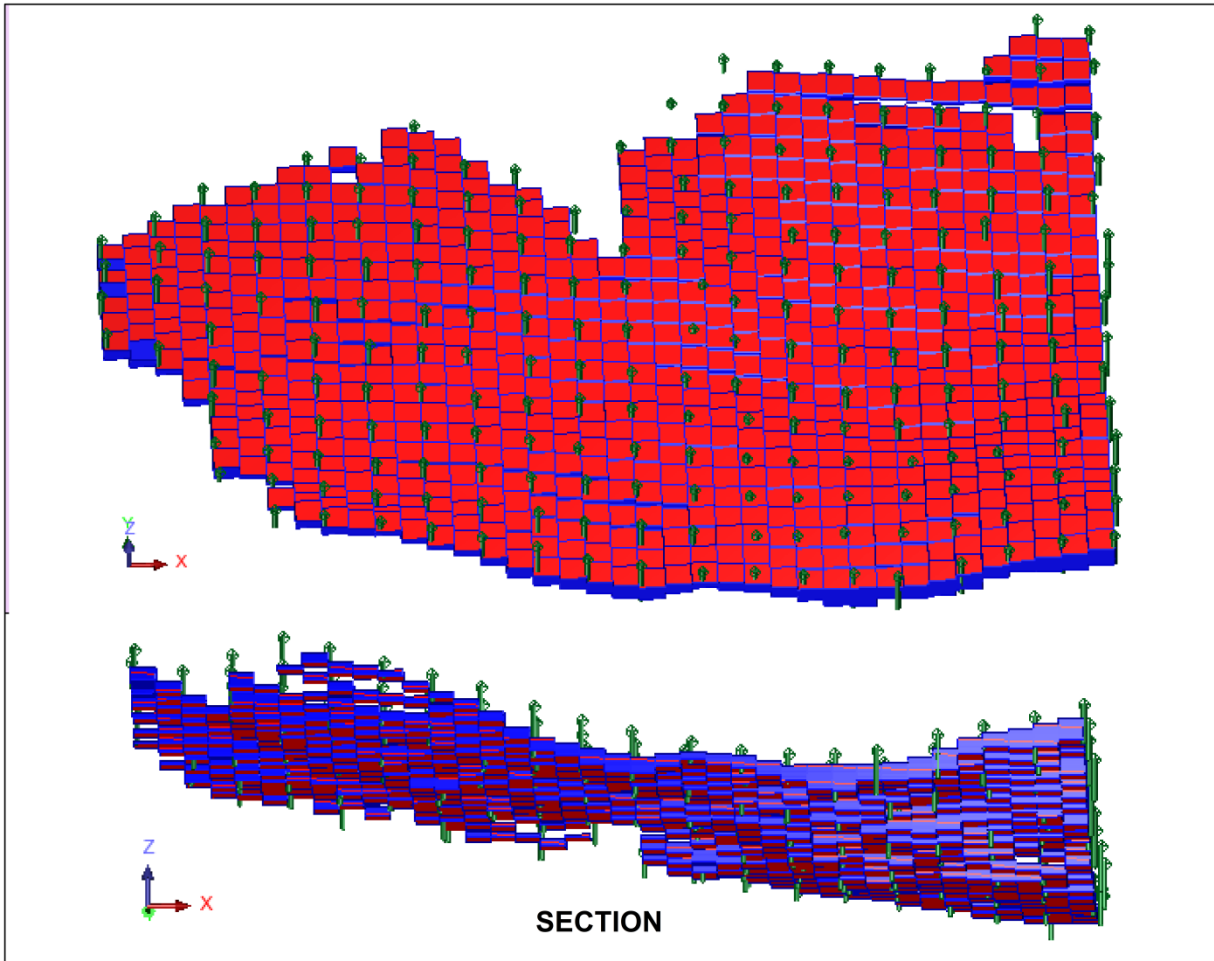


DEPERTEMEN TEKNIK PERTAMBANGAN
FAKULTAS TEKNIK
UNIVERSITAS HASANUDDIN

SKRIPSI
OPTIMASI VARIASI SPASI TITIK BOR ENDAPAN NIKEL
LATERIT DENGAN MENGGUNAKAN PENDEKATAN
GEOSTATISTIK (ORDINARY KRIGING) UNTUK
PERHITUNGAN SUMBER DAYA

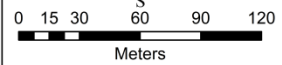
PEMBIMBING ASRAN ILYAS, S.T., M.T., Ph.D.
NIP. 19730314 200012 1 001
Dr. Ir. IRZAL NUR, M.T.
NIP. 19660409 199703 1 002

MODIFIKASI YUSRI MAHENDRA
NIM D111 18 1307
LAB. EKSPLORASI MINERAL



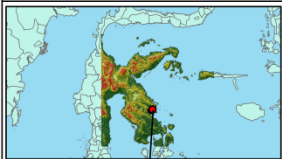
SECTION

**BLOK MODEL ESTIMASI
25 M X 25 M
ZONA SAPROLIT**



LEGEND

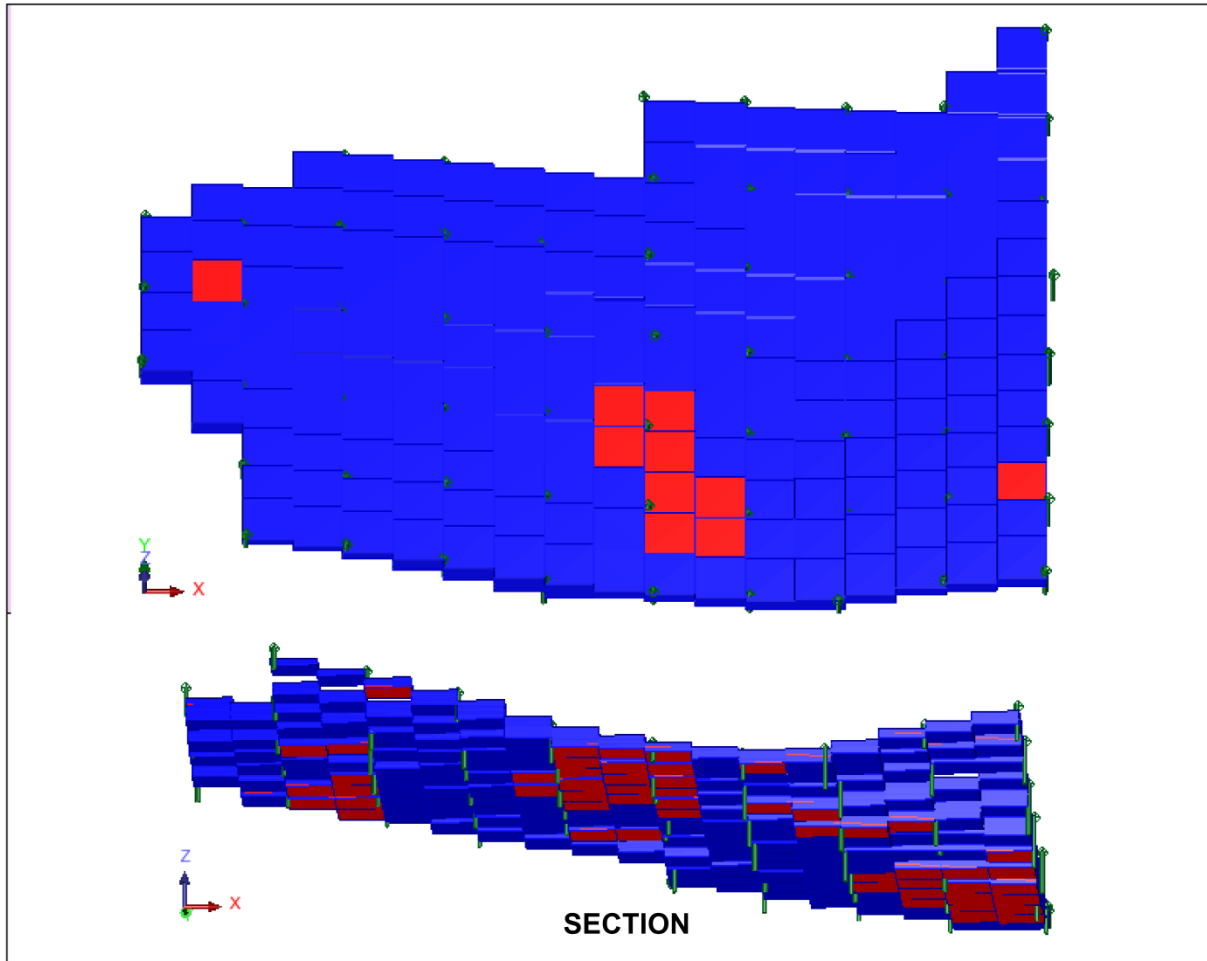
- ORE
- WASTE
- LUBANG BOR



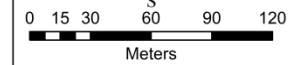
**DEPERTEMEN TEKNIK PERTAMBANGAN
FAKULTAS TEKNIK
UNIVERSITAS HASANUDDIN**

SKRIPSI
 OPTIMASI VARIASI SPASI TITIK BOR ENDAPAN NIKEL
 LATERIT DENGAN MENGGUNAKAN PENDEKATAN
 GEOSTATISTIK (ORDINARY KRIGING) UNTUK
 PERHITUNGAN SUMBER DAYA

PEMBIMBING	ASRAN ILYAS, S.T.,M.T.,Ph.D. NIP. 19720314 200012 1 001
	Dr. Ir. IRZAL NIUR, M.T. NIP. 19660409 199703 1 002
MODIFIKASI	YUSRI MAHENDRA NIM D111 18 1307 LAB. EKSPLORASI MINERAL

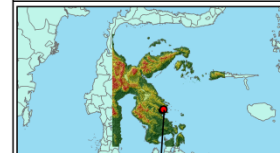


**BLOK MODEL ESTIMASI
50 M X 50 M
ZONA LIMONIT**



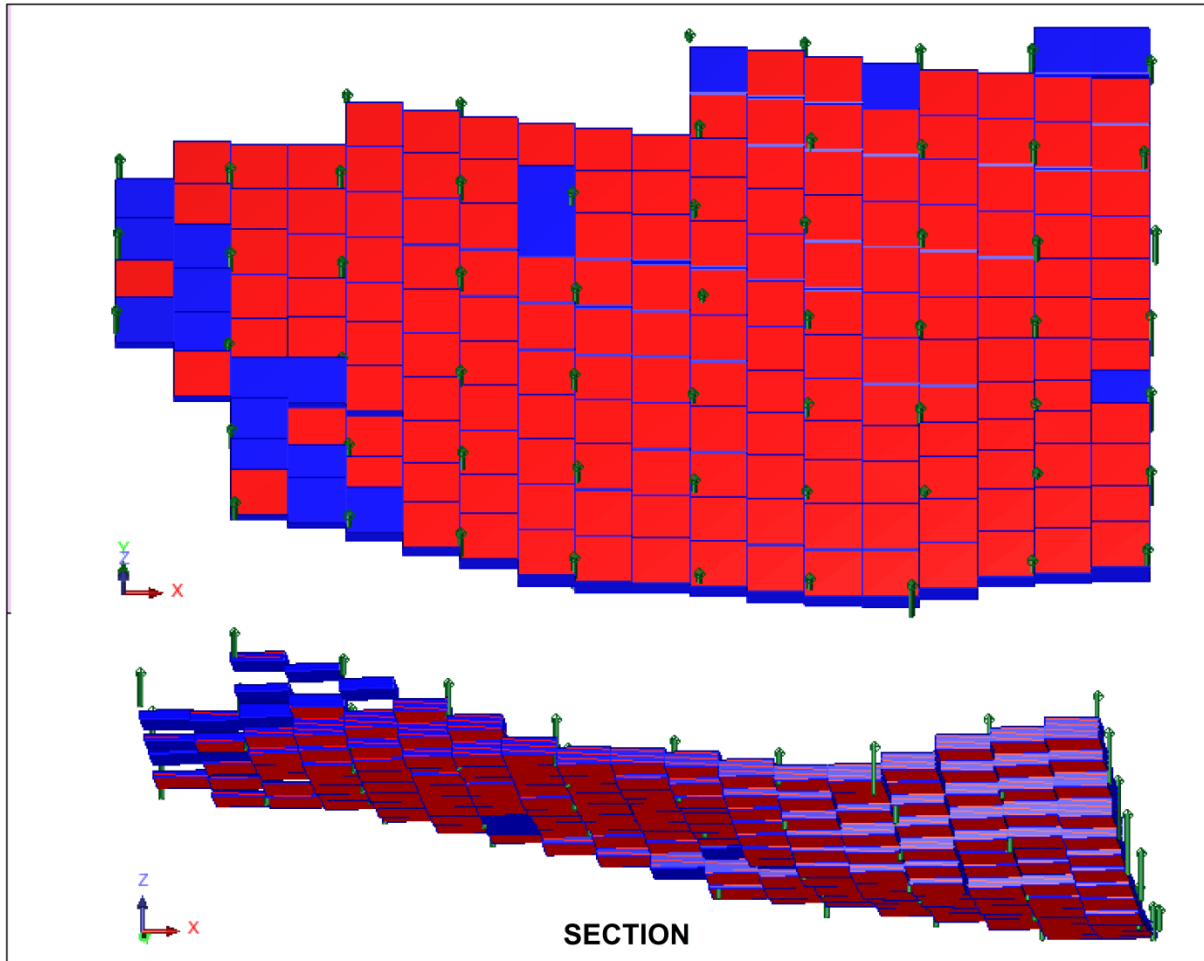
LEGEND

- ORE
- WASTE
- LUBANG BOR



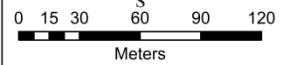
SKRIPSI
OPTIMASI VARIASI SPASI TITIK BOR ENDAPAN NIKEL
LATERIT DENGAN MENGGUNAKAN PENDEKATAN
GEOSTATISTIK (ORDINARY KRIGING) UNTUK
PERHITUNGAN SUMBER DAYA

PEMBIMBING	ASRAN ILYAS, S.T.,M.T.,Ph.D. NIP. 19720314 200012 1 001
	Dr. Ir. IRZAL NIUR, M.T. NIP. 19660409 199703 1 002
MODIFIKASI	YUSRI MAHENDRA NIM D111 18 1307 LAB. EKSPLORASI MINERAL



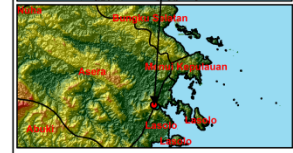
SECTION

**BLOK MODEL ESTIMASI
50 M X 50 M
ZONA SAPROLIT**



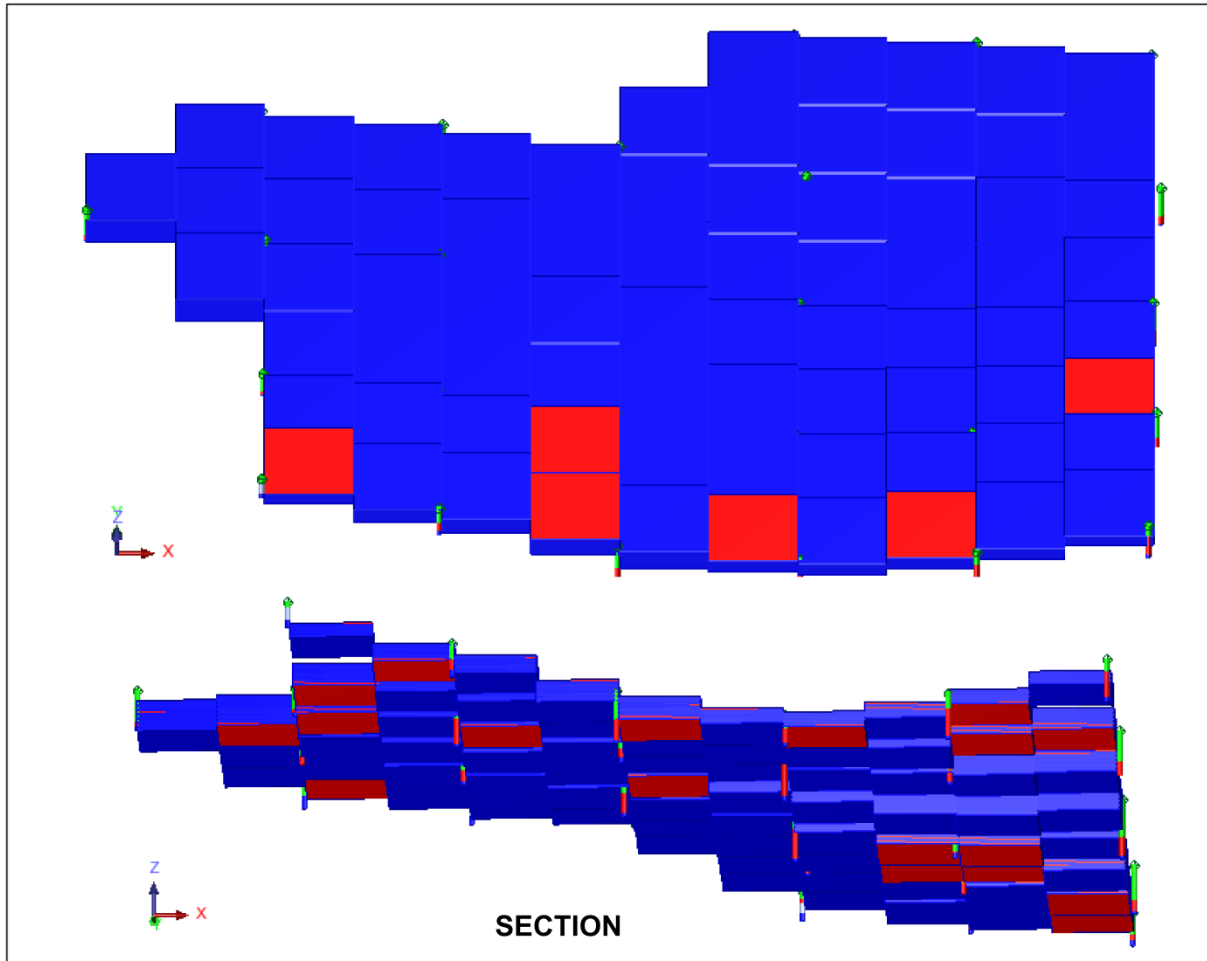
LEGEND

- ORE
- WASTE
- LUBANG BOR



SKRIPSI
OPTIMASI VARIASI SPASI TITIK BOR ENDAPAN NIKEL
LATERIT DENGAN MENGGUNAKAN PENDEKATAN
GEOSTATISTIK (ORDINARY KRIGING) UNTUK
PERHITUNGAN SUMBER DAYA

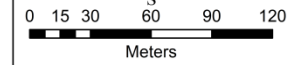
PEMBIMBING	ASRAN ILYAS, S.T.,M.T.,Ph.D. NIP.19720314 200012 1 001
	Dr. Ir. IRZAL NUR, M.T NIP.19660409 199703 1 002
MODIFIKASI	YUSRI MAHENDRA NIM D111 18 1307 LAB. EKSPLORASI MINERAL



BLOK MODEL ESTIMASI

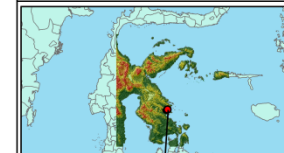
75 M X 75 M

ZONA LIMONIT



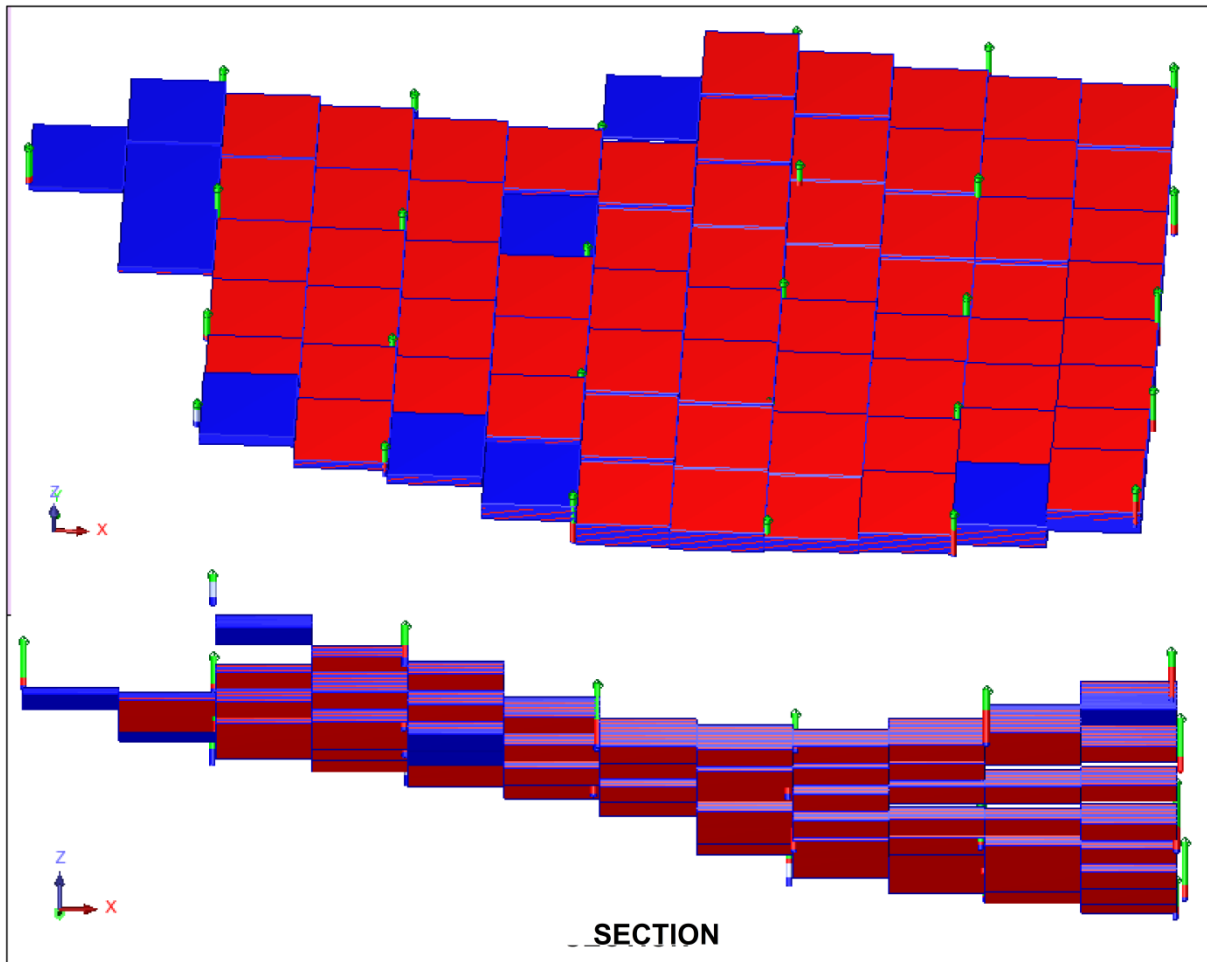
LEGEND

- ORE
- WASTE
- LUBANG BOR

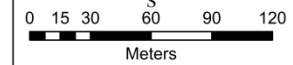


SKRIPSI
OPTIMASI VARIASI SPASI TITIK BOR ENDAPAN NIKEL
LATERIT DENGAN MENGGUNAKAN PENDEKATAN
GEOSTATISTIK (ORDINARY KRIGING) UNTUK
PERHITUNGAN SUMBER DAYA

PEMBIMBING	ASRAN ILYAS, S.T.,M.T.,Ph.D. NIP. 19720314 200012 1 001 Dr. Ir. IRZAL NIUR, M.T. NIP. 19660409 199703 1 002
MODIFIKASI	YUSRI MAHENDRA NIM D111 18 1307 LAB. EKSPLORASI MINERAL

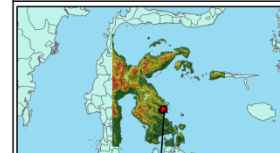


**BLOK MODEL ESTIMASI
75 M X 75 M
ZONA SAPROLIT**



LEGEND

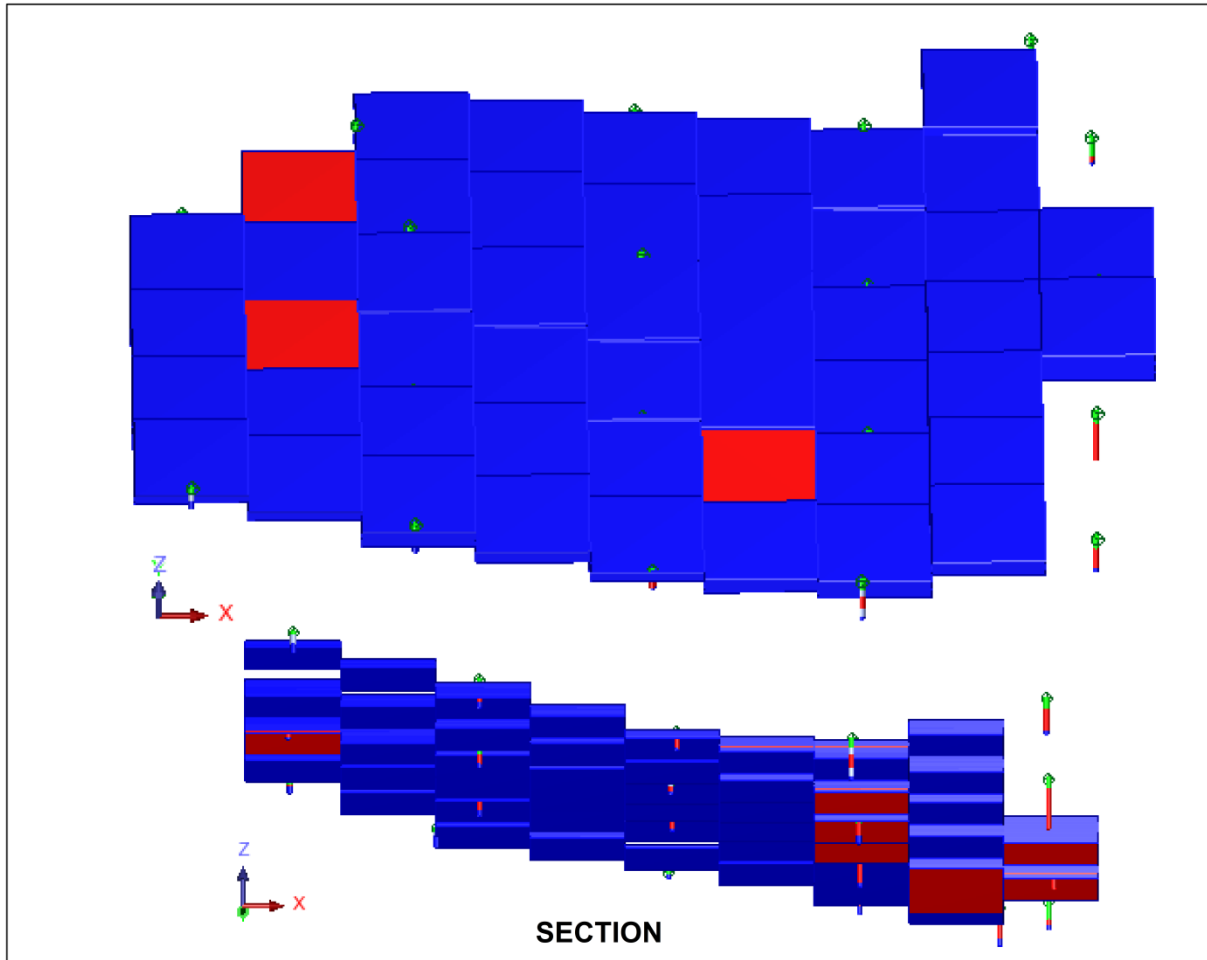
- ORE
- WASTE
- LUBANG BOR



SKRIPSI
OPTIMASI VARIASI SPASI TITIK BOR ENDAPAN NIKEL
LATERIT DENGAN MENGGUNAKAN PENDEKATAN
GEOSTATISTIK (ORDINARY KRIGING) UNTUK
PERHITUNGAN SUMBER DAYA

PEMBIMBING	ASRAN ILYAS, S.T.,M.T.,Ph.D. NIP. 19720314 200012 1 001 Dr. Ir. IRZAL NIUR, M.T. NIP. 19660409 199703 1 002
------------	--

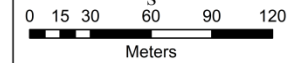
MODIFIKASI	YUSRI MAHENDRA NIM D111 18 1307 LAB. EKSPLORASI MINERAL
------------	---



**BLOK MODEL ESTIMASI
100 M X 100 M**

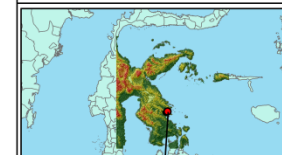
ZONA LIMONIT

ZONA LIMONIT



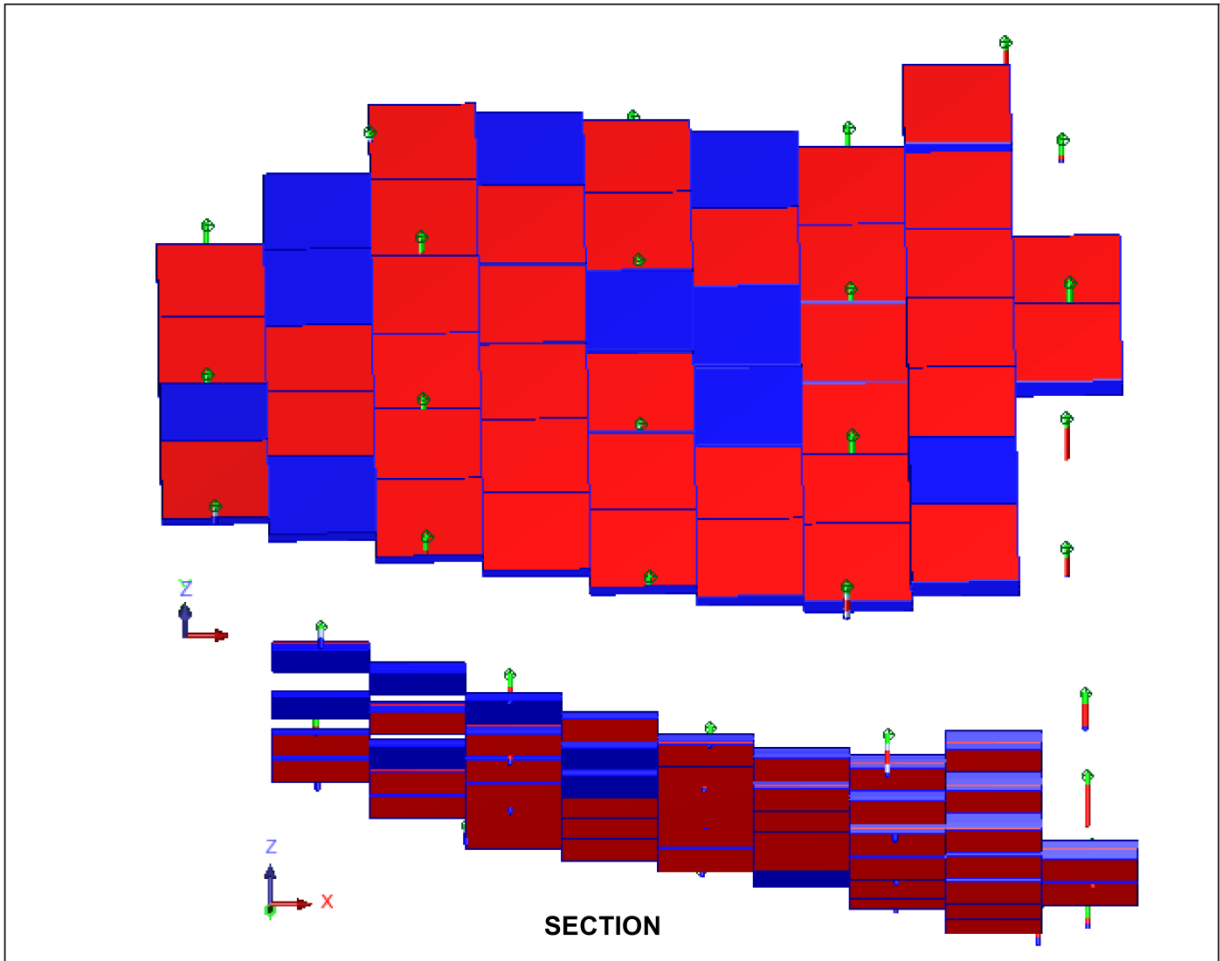
LEGEND

- ORE
- WASTE
- LUBANG BOR

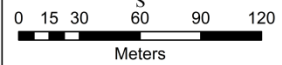


SKRIPSI
OPTIMASI VARIASI SPASI TITIK BOR ENDAPAN NIKEL
LATERIT DENGAN MENGGUNAKAN PENDEKATAN
GEOSTATISTIK (ORDINARY KRIGING) UNTUK
PERHITUNGAN SUMBER DAYA

PEMBIMBING	ASRAN ILYAS, S.T.,M.T.,Ph.D. NIP. 19720314 200012 1 001
	Dr. Ir. IRZAL NIUR, M.T. NIP. 19660409 199703 1 002
MODIFIKASI	YUSRI MAHENDRA NIM D111 18 1307 LAB. EKSPLORASI MINERAL

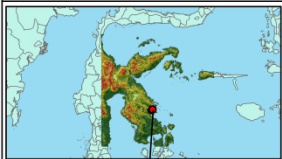


**BLOK MODEL ESTIMASI
100 M X 100 M
ZONA SAPROLIT**



LEGEND

- ORE
- WASTE
- LUBANG BOR



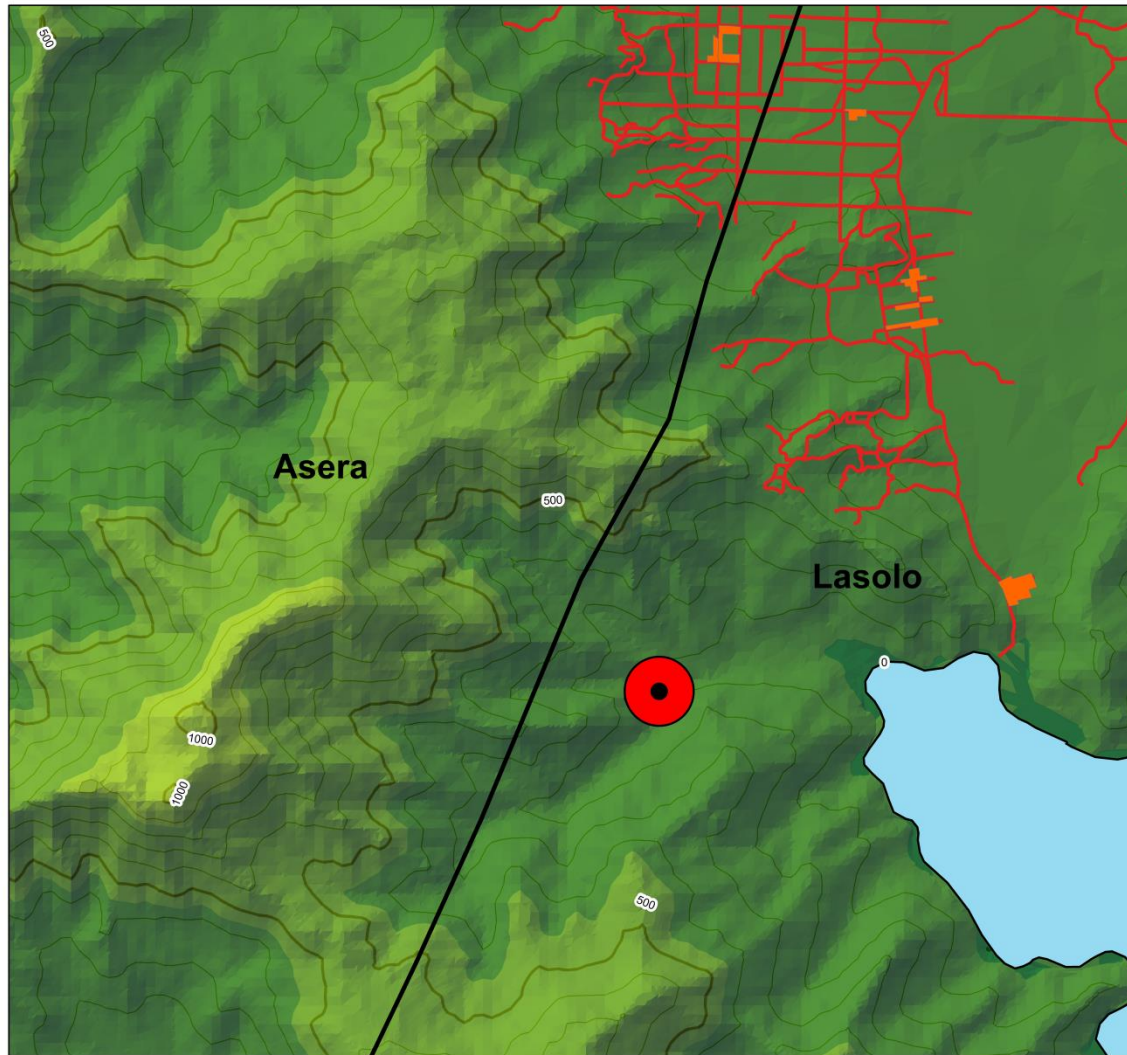
**DEPERTEMEN TEKNIK PERTAMBANGAN
FAKULTAS TEKNIK
UNIVERSITAS HASANUDDIN**

SKRIPSI
 OPTIMASI VARIASI SPASI TITIK BOR ENDAPAN NIKEL
 LATERIT DENGAN MENGGUNAKAN PENDEKATAN
 GEOSTATISTIK (ORDINARY KRIGING) UNTUK
 PERHITUNGAN SUMBER DAYA

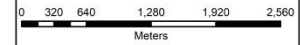
PEMBIMBING	ASRAN ILYAS, S.T.,M.T.,Ph.D. NIP. 19720314 200012 1 001
	Dr. Ir. IRZAL NIUR, M.T. NIP. 19660409 199703 1 002
MODIFIKASI	YUSRI MAHENDRA NIM D111 18 1307 LAB. EKSPLORASI MINERAL

LAMPIRAN 3

PETA LOKASI PENELITIAN

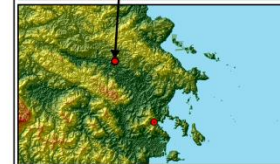
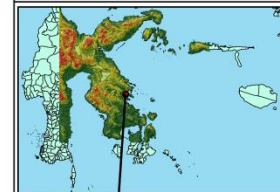


PETA LOKASI PENELITIAN



LEGEND

- LOKASI PENELITIAN
- JALAN
- BATAS KECAMATAN
- KONTUR
- PEMUKIMAN
- ELEVASI 0-200
- ELEVASI 400-800
- ELEVASI 200-400
- ELEVASI 800-1200



DEPERTEMEN TEKNIK PERTAMBANGAN
FAKULTAS TEKNIK
UNIVERSITAS HASANUDDIN

SKRIPSI
OPTIMASI VARIASI SPASI TITIK BOR ENDAPAN NIKEL
LATERIT DENGAN MENGGUNAKAN PENDEKATAN
GEOSTATISTIK (ORDINARY KRIGING) UNTUK
PERHITUNGAN SUMBER DAYA

PEMBIMBING

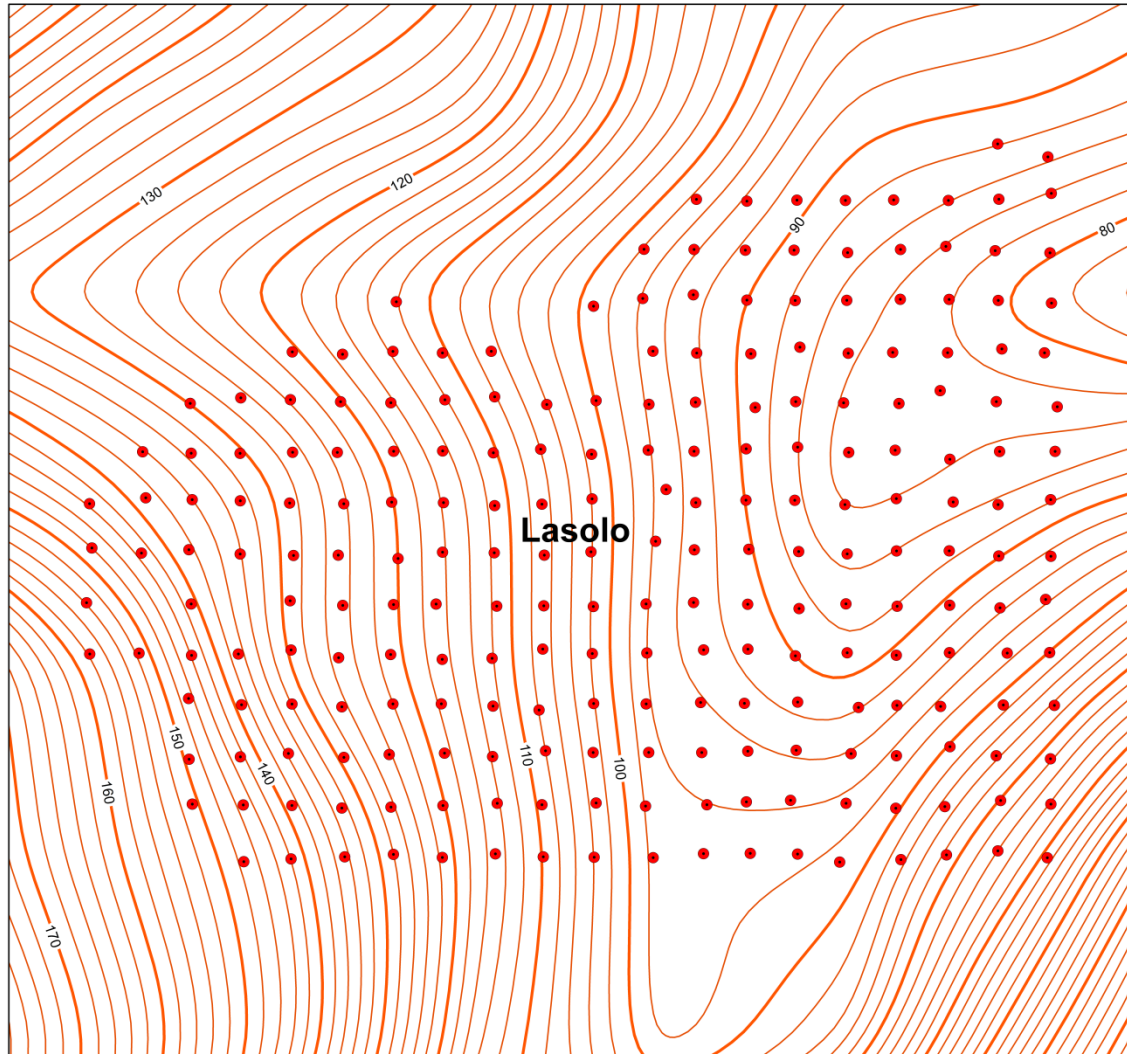
ASRAN ILYAS, S.T.,M.T.,Ph.D.
NIP. 19730314 200012 1 001
Dr. Ir. IRZAL NUR, M.T
NIP. 19660409 199703 1 002

MODIFIKASI

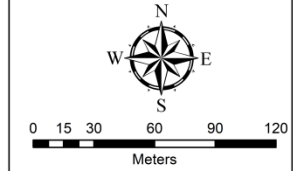
YUSRI MAHENDRA
NIM D111 18 1307
LABORATORIUM EKSPLORASI MINERAL

LAMPIRAN 4

PETA SIMULASI VARIASI SPASI TITIK BOR

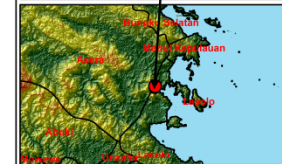


**PETA SPASI TITIK BOR
25 M X 25 M**



LEGEND

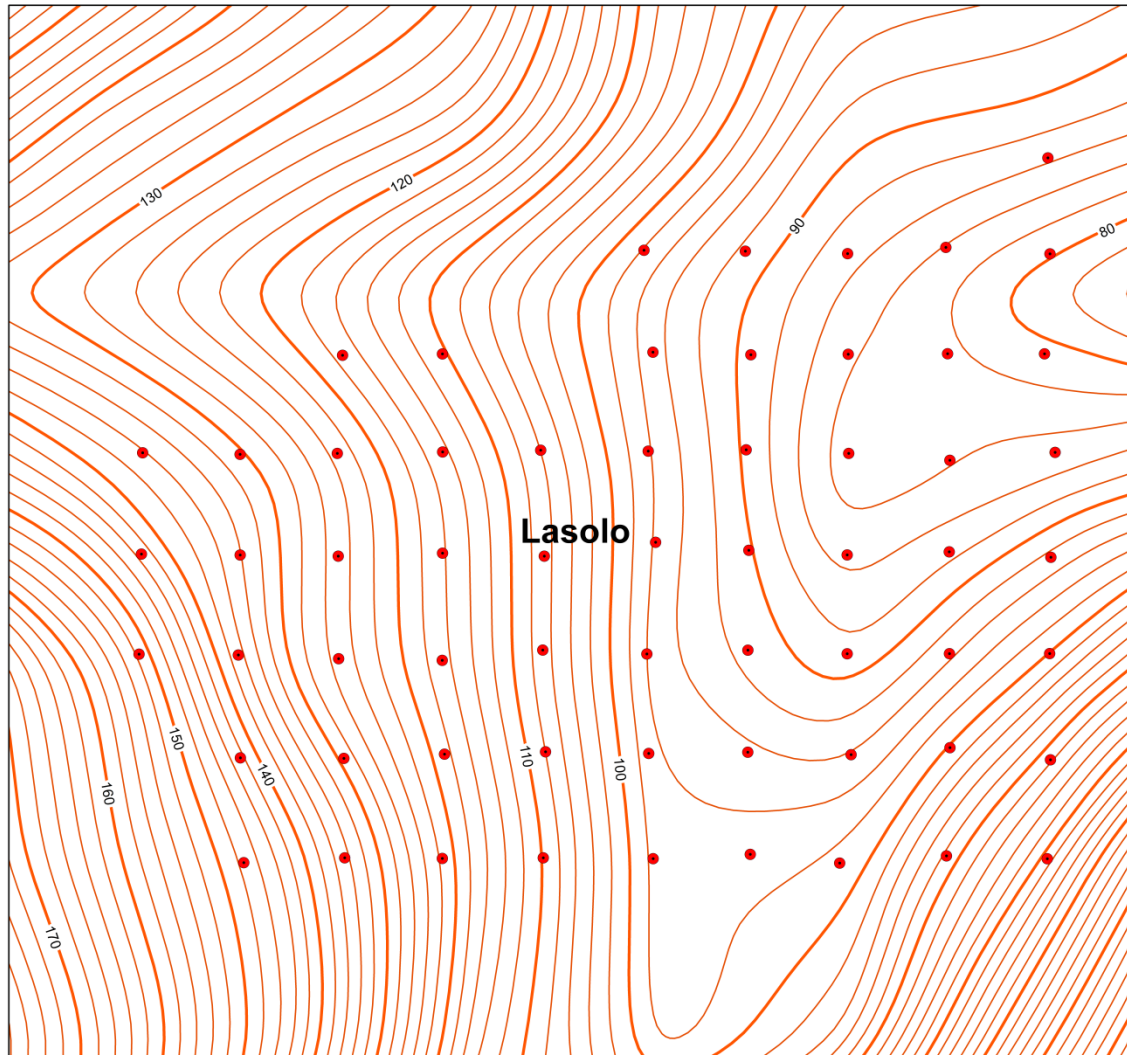
- TITIK BOR
- KONTUR
- INDEKS KONTUR



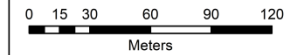
DEPERTEMEN TEKNIK PERTAMBANGAN
FAKULTAS TEKNIK
UNIVERSITAS HASANUDDIN

SKRIPSI
OPTIMASI VARIASI SPASI TITIK BOR ENDAPAN NIKEL
LATERIT DENGAN MENGGUNAKAN PENDEKATAN
GEOSTATISTIK (ORDINARY KRIGING) UNTUK
PERHITUNGAN SUMBER DAYA

PEMBIMBING	ASRAN ILYAS, S.T.,M.T.,Ph.D. NIP. 19730314 200012 1 001
	Dr. Ir. IRZAL NUR, M.T. NIP. 19660409 199703 1 002
MODIFIKASI	YUSRI MAHENDRA NIM D111 18 1307 LAB. EKSPLORASI MINERAL



**PETA SPASI TITIK BOR
50 M X 50 M**



LEGEND

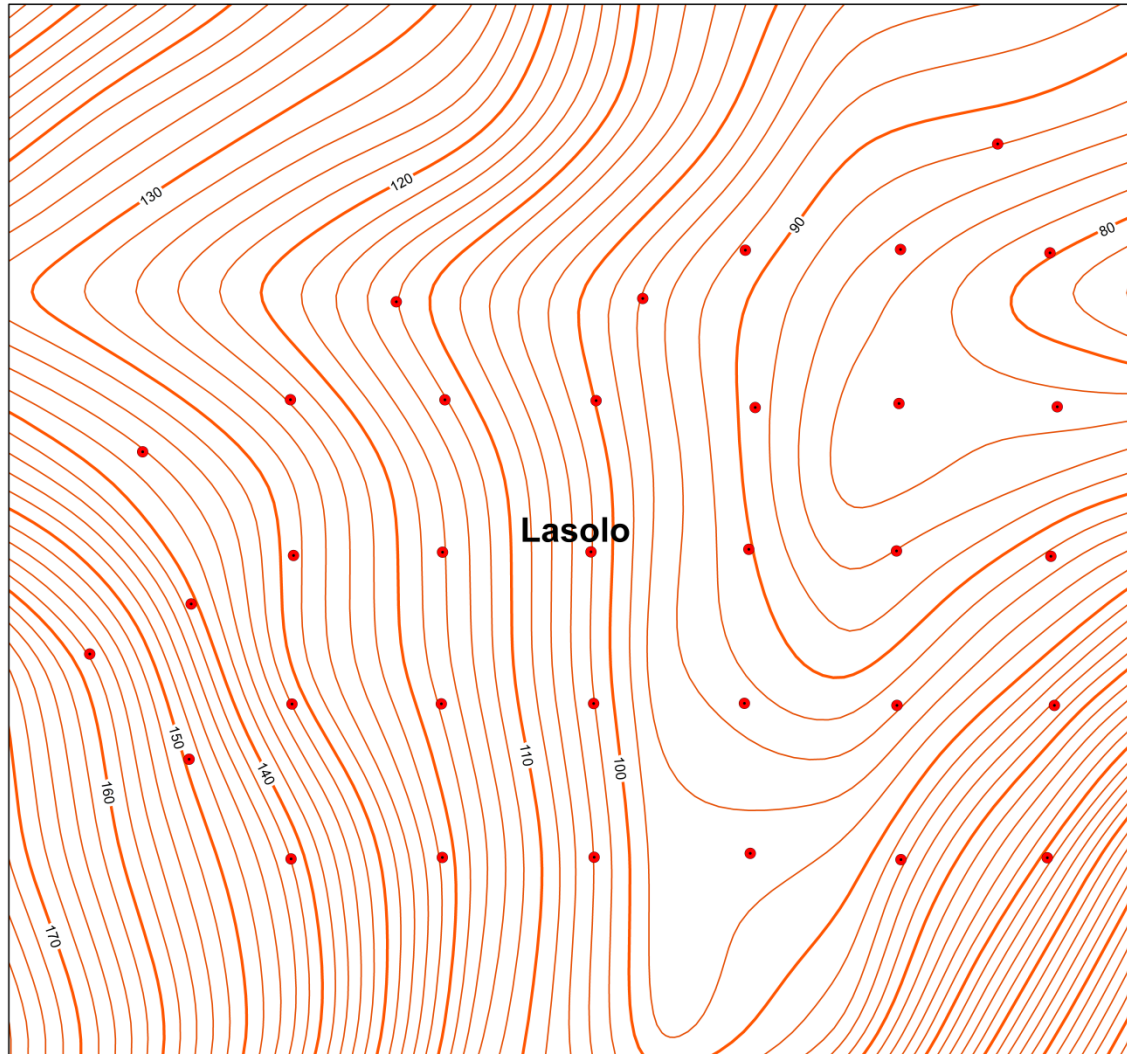
- TITIK BOR
- KONTUR
- INDEKS KONTUR



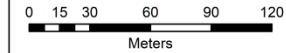
DEPERTEMEN TEKNIK PERTAMBANGAN
FAKULTAS TEKNIK
UNIVERSITAS HASANUDDIN

SKRIPSI
OPTIMASI VARIASI SPASI TITIK BOR ENDAPAN NIKEL
LATERIT DENGAN MENGGUNAKAN PENDEKATAN
GEOSTATISTIK (ORDINARY KRIGING) UNTUK
PERHITUNGAN SUMBER DAYA

PEMBIMBING	ASRAN ILYAS, S.T., M.T., Ph.D. NIP. 19730314 200012 1 001
	Dr. Ir. IRZAL NUR, M.T. NIP. 19660409 199703 1 002
MODIFIKASI	YUSRI MAHENDRA NIM D111 18 1307 LAB. EKSPLORASI MINERAL



**PETA SPASI TITIK BOR
75 M X 75 M**



LEGEND

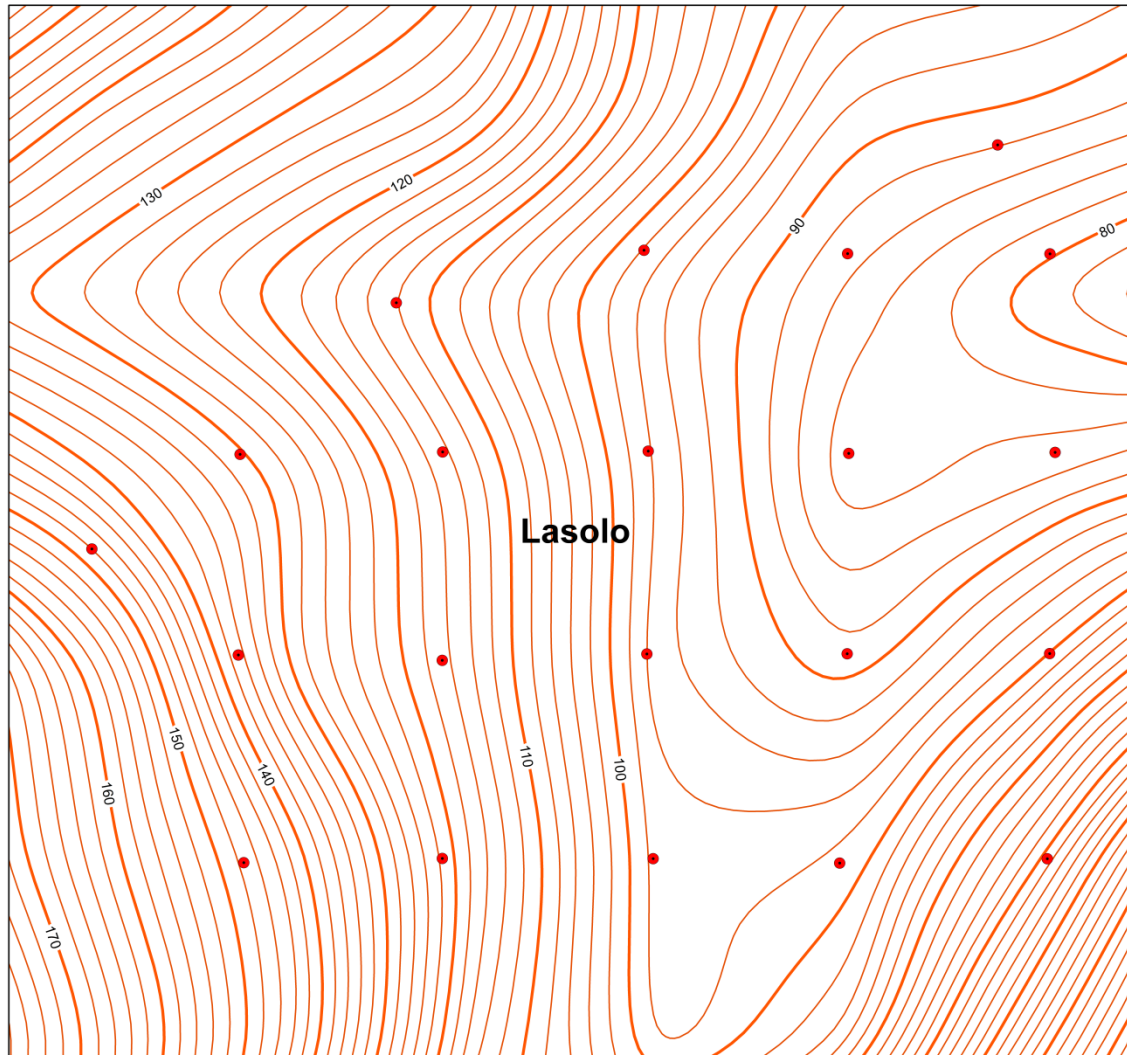
- TITIK BOR
- KONTUR
- INDEKS KONTUR



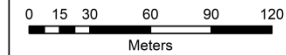
DEPERTEMEN TEKNIK PERTAMBANGAN
FAKULTAS TEKNIK
UNIVERSITAS HASANUDDIN

SKRIPSI
OPTIMASI VARIASI SPASI TITIK BOR ENDAPAN NIKEL
LATERIT DENGAN MENGGUNAKAN PENDEKATAN
GEOSTATISTIK (ORDINARY KRIGING) UNTUK
PERHITUNGAN SUMBER DAYA

PEMBIMBING	ASRAN ILYAS, S.T., M.T., Ph.D. NIP. 19730314 200012 1 001
	Dr. Ir. IRZAL NUR, M.T. NIP. 19660409 199703 1 002
MODIFIKASI	YUSRI MAHENDRA NIM D111 18 1307 LAB. EKSPLORASI MINERAL



**PETA SPASI TITIK BOR
100 M X 100 M**



LEGEND

- TITIK BOR
- KONTUR
- INDEKS KONTUR



DEPERTEMEN TEKNIK PERTAMBANGAN
FAKULTAS TEKNIK
UNIVERSITAS HASANUDDIN

SKRIPSI
OPTIMASI VARIASI SPASI TITIK BOR ENDAPAN NIKEL
LATERIT DENGAN MENGGUNAKAN PENDEKATAN
GEOSTATISTIK (ORDINARY KRIGING) UNTUK
PERHITUNGAN SUMBER DAYA

PEMBIMBING	ASRAN ILYAS, S.T., M.T., Ph.D. NIP. 19730314 200012 1 001
	Dr. Ir. IRZAL NUR, M.T. NIP. 19660409 199703 1 002
MODIFIKASI	YUSRI MAHENDRA NIM D111 18 1307 LAB. EKSPLORASI MINERAL

Lampiran B 10

Kartu Konsultasi Tugas Akhir

JUDUL: Optimasi Variasi Spasi Titik Bor Endapan Mikel Laterit dengan menggunakan Pendekatan Geostatistik (Ordinary Kriging) untuk Perhitungan Sumber daya.

(Konsultasi minimal 8 kali)

TANGGAL	MATERI KONSULTASI	PARAF DOSEN
11/7/2022	Asistensi Judul & Rumusan Masalah Penelitian	M —
19/7/2022	Konsultasi: data penelitian	M —
29/7/2022	Konsultasi: BAB I, II, III	M —
8/8/2022	Konsultasi: BAB IV dan V	M —
26/8/2022	Asistensi laporan lengkap dan data penelitian	M —

TANGGAL	MATERI KONSULTASI	PARAF DOSEN
18/9/2022	Astensi perbaikan laporan lengkap (Abstrak, BAB I, II, III, IV, dan V)	14—
21/09/2022	Astensi perbaikan format penulisan jurnal, dan hasil analisis	14—
27/09/2022	Astensi laporan lengkap, artikel dan poster	14—
4/10/2022	Aec laporan lengkap	14—
6/10/2022	Astensi: laporan lengkap (Penera: Seminar Hasil)	14—
9/11/2022	Astensi: BAB II dan IV (Penera)	14—
28/11/2022	Astensi laporan lengkap	14—