

## DAFTAR PUSTAKA

- Adila, (2021) Analisis kandungan mikroplastik pada sedimen pantai sukaraja kota bandar lampung.
- Afdal, M. (2019) 'Studies on Microplastics Morphology Characteristics in the Coastal Water of Makassar City, South Sulawesi, Indonesia', *International Journal of Environment, Agriculture and Biotechnology*, 4(4), pp. 1028–1033. doi: 10.22161/ijeab.4421.
- Barasarathi, J., P. Agamuthu, C.U. Emenike, S.H. Fauziah. (2014). Microplastic abundance in selected mangrove forest in Malaysia. Proceeding of The ASEAN Conference on Science and Technology, Institute of Biological Sciences Faculty of Science, University of Malaya, 50603 Kuala Lumpur Malaysia. 4p.
- Citrasari, N., Oktavitri, N. I. and Aniwindira, N. A. (2012) 'Analisis Laju Timbunan Dan Komposisi Sampah Di Permukiman Pesisir Kenjeran Surabaya', *Berkala Penelitian Hayati*, 18(1), pp. 83–85. doi: 10.23869/bphjbr.18.1.201214.
- De Falco, F., Gullo, M. P., Gentile, G., Di Pace, E., Cocca, M., Gelabert, L., Brouta-Agnesa, M., Rovira, A., Escudero, R., Villalba, R., Mossotti, R., Montarsolo, A., Gavignano, S., Tonin, C., & Avella, M. (2018). Evaluation of Microplastic Release Caused by Textile Washing Processes of Synthetic Fabrics. *Environmental Pollution*. Vol. 236. Hal. 916–925
- Hartman, A., Lovén, E. and Olsson, M. (2014) 'Plastic as marine debris and its potential for economic value'.
- Horton, A. A., Alexander Walton, David J. Spurgeon, Elma Lahive, Claus Svendsen. (2017). Microplastics in Freshwater and Terrestrial Environments: Evaluating the Current Understanding to Identify the Knowledge Gaps and Future Research Priorities. *Science of the Total Environment*
- Käppler, Andrea, Dieter Fischer, Sonja Oberbeckmann, Gerald Schernewski, Matthias Labrenz, Klaus-Jochen Eichhorn & Brigitte Voit. (2016). Analysis of Environmental Microplastics by Vibrational Microspectroscopy: FTIR, Raman or Both. *Analytical and Bioanalytical Chemistry*. Vol. 408. Hal. 8377-8391.
- Kamppuri, T., Vehvilainen, M., Puolakka, A., Honkanen, M., Vippola, M., Rissanen, M. (2015). Characterisation of Novel Regenerated

Cellulosic, Viscose, and Cotton Fibers and The Dyeing Properties of Fabrics. *Color. Technol.* Vol. 131. Hal. 396-402.

Kementrian, P. (2017) 'Pusat Pendidikan Dan Pelatihan Sumber Daya Air Dan Konstruksi', *Modul Pendayagunaan Sumberdaya Air. Pelatihan Dasar Teknis Bidang SDA*, p. 3.

Kusumawati, I., Setyowati, M. and Salena, I. Y. (2018) 'Identifikasi komposisi sampah laut di pesisir aceh barat composition identification of the marine debris in the coastal of west aceh', *Jurnal Perikanan Tropis*, 5, pp. 59–69.

Klein, Sascha, Ian K. Dimzon, Jan Eubeler, and Thomas P. Knepper. (2018). Analysis, Occurrence, and Degradation of Microplastics in the Aqueous Environment. *Freshwater Microplastics*, Hdb Env Chem. Vol. 58.

Mulyabakti, C., Jasin, M. I. and Mamoto, J. D. (2016) 'Analisis Karakteristik Gelombang dan Pasang Surut Pada Daerah Pantai Paal Kecamatan Likupang Timur Kabupaten Minahasa Utara', *Jurnal Sipil Statik*, 4(9), pp. 585–594.

NOAA, Marine Debris Program. (2015). Laboratory Methods for the Analysis of Microplastics in The Marine Environment: Recommendations for Quantifying Synthetic Particles in Waters and Sediments.

Pengusul, T. I. M. *et al.* (2017) 'Oleh : UNIVERSITAS LAMPUNG NOVEMBER 2017'.

Priambodo, R.Y.(2022). Identifikasi Mikroplastik Di Perairan Laut Dan Pesisir Pantai Kabupaten Pacitan & Kabupaten Wonogiri (Doctoral Dissertation, Universitas Islam Indonesia Yogyakarta)

Rahmadhani, F. (2019). Identifikasi dan analisis kandungan mikroplastik pada ikan pelagis dan demersal serta sedimen dan air laut di perairan Pulau

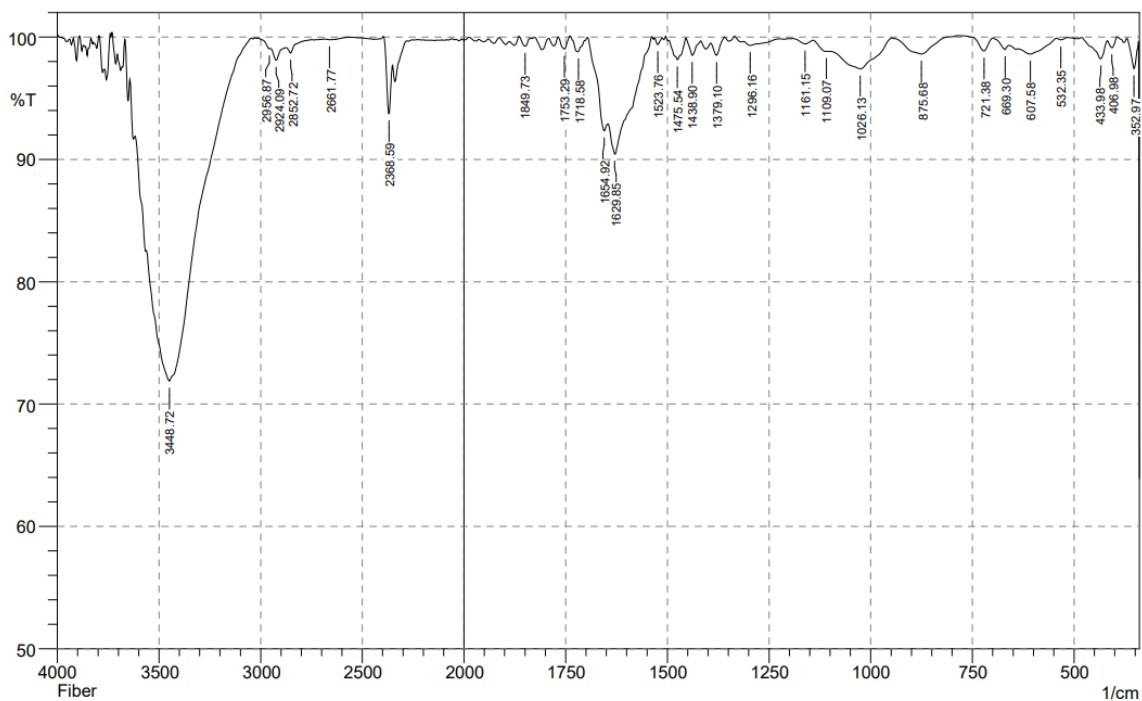
Salim, A., Sultan, D. and H.Cotte, I. (2018) 'Optimalisasi Pemanfaatan Pangkalan Pendaratan Ikan (Ppi) Beba Galesong Utara Kabupaten Takalar Sulawesi Selatan', *JOURNAL OF INDONESIAN TROPICAL FISHERIES (JOINT-FISH): Jurnal Akuakultur, Teknologi Dan Manajemen Perikanan Tangkap, Ilmu Kelautan*, 1(1), pp. 40–48. doi: 10.33096/joint-fish.v1i1.19.

Tiwari, M., Rathod, T.D., Ajmal, P.Y., Bhangare, R.C., Sahu, S.K. (2019). Distribution and Characterization of Microplastics in Beach Sand from Three

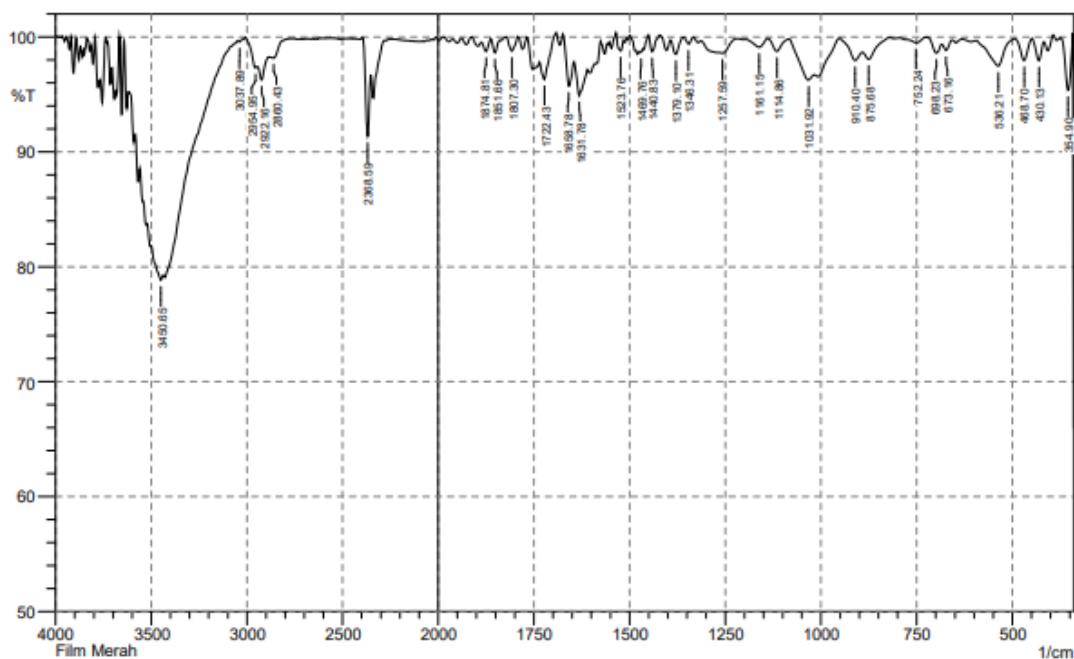
- Triatmodjo, B. (1999). *Teknik Pantai*. Beta Offset. Yogyakarta.
- Valasia, M. N. (2021). Analisis mikroplastik pada air, sedimen dan kerang lorjuk (*Solen sp.*) di Pantai Talang Siring Kabupaten Pamekasan (Doctoral dissertation, UIN Sunan Ampel Surabaya)
- Yuwandita, A.Y.(2018). Pengaruh Kedalaman Pengambilan Sampel Terhadap Jenis Dan Kelimpahan Mikroplastik Pada Sedimen Di Pesisir Lamongan, Jawa Timur (Doctoral Dissertation, Universitas Brawijaya)
- Yona, D., Di Prikah, F. A. and As'adi, M. A. (2020) 'Identifikasi dan Perbandingan Kelimpahan Sampah Plastik Berdasarkan Ukuran pada Sedimen di Beberapa Pantai Kabupaten Pasuruan, Jawa Timur', *Jurnal Ilmu Lingkungan*, 18(2), pp. 375–383. doi: 10.14710/jil.18.2.375-383.
- Zhang, Hua. (2017). Transport of Microplastics in Coastal Seas. *Estuarine, Coastal and Shelf Science*. Vol. 199. Hal. 74-86.

## LAMPIRAN

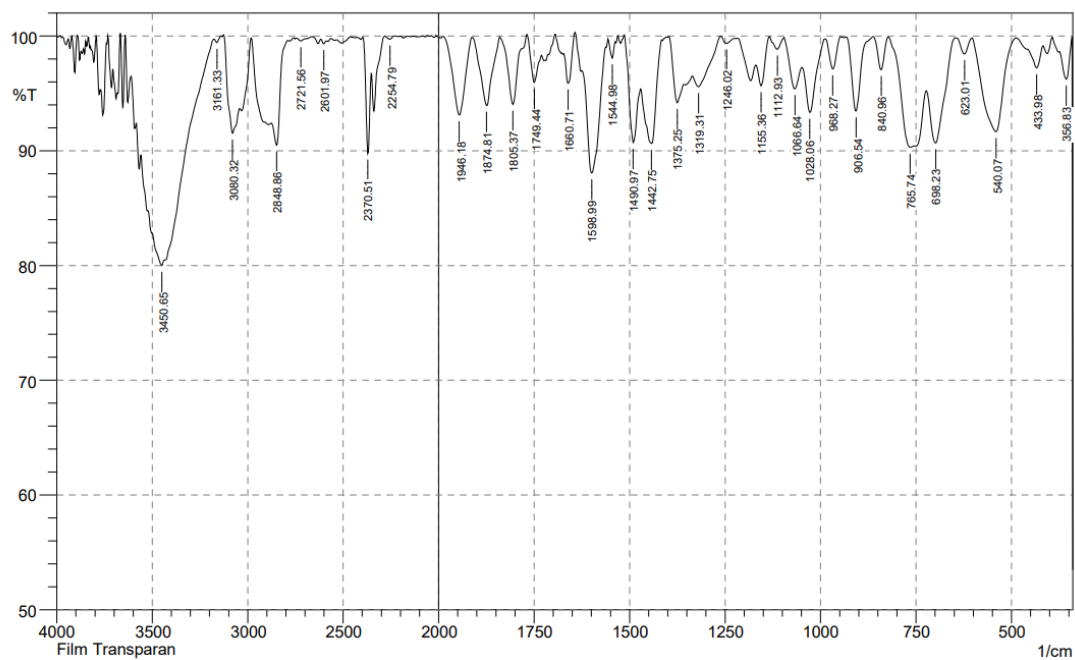
### Lampiran Hasil Pengujian FT-IR (*Fourier Transform Infrared*)



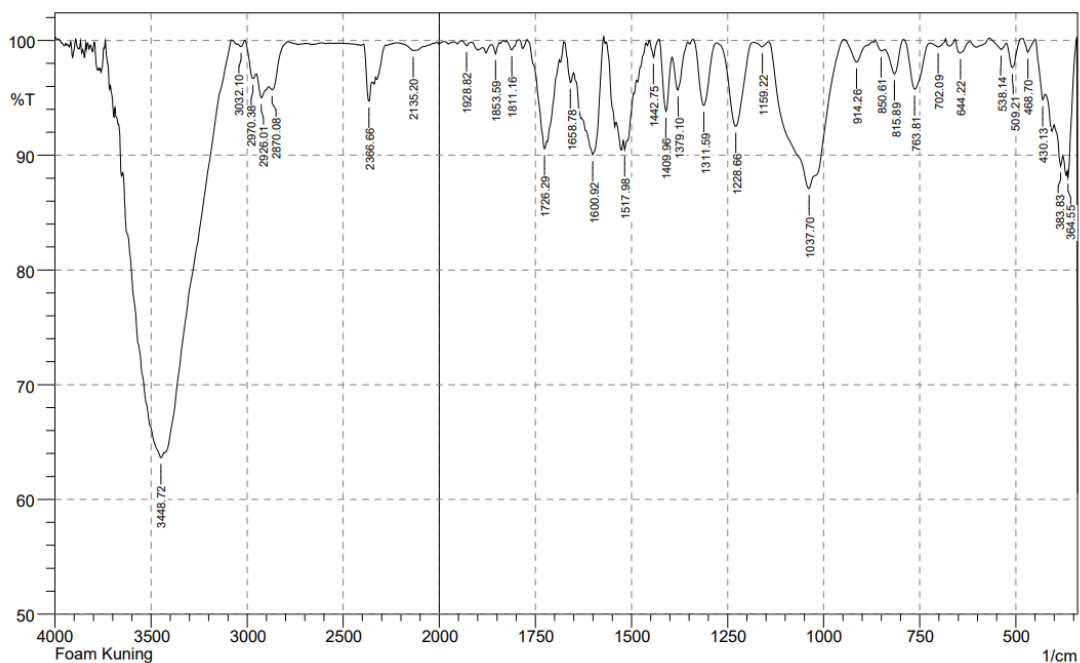
	Peak	Intensity	Corr. Intensity	Base (H)	Base (L)	Area	Corr. Area
1	352.97	97.417	2.35	370.33	341.4	0.173	0.146
2	406.98	99.134	0.719	418.55	393.48	0.055	0.041
3	433.98	98.225	1.539	482.2	418.55	0.249	0.203
4	532.35	99.774	0.164	542	516.92	0.016	0.01
5	607.58	98.615	0.699	638.44	542	0.396	0.174
6	669.3	98.988	0.477	698.23	659.66	0.097	0.033
7	721.38	98.861	1.12	783.1	698.23	0.113	0.122
8	875.68	98.616	1.359	941.26	783.1	0.413	0.41
9	1026.13	97.409	1.958	1101.35	948.98	1.129	0.716
10	1109.07	98.826	0.184	1141.86	1101.35	0.15	0.024
11	1161.15	99.436	0.355	1192.01	1141.86	0.078	0.036
12	1296.16	99.311	0.367	1311.59	1224.8	0.172	0.076
13	1379.1	98.519	1.179	1392.61	1359.82	0.12	0.083
14	1438.9	98.516	1.29	1454.33	1417.68	0.13	0.096
15	1475.54	98.155	1.663	1496.76	1454.33	0.213	0.18
16	1523.76	99.384	0.55	1531.48	1514.12	0.027	0.022
17	1629.85	90.438	3.485	1645.28	1539.2	2.562	0.896
18	1654.92	92.326	1.652	1697.36	1647.21	0.904	0.096
19	1718.58	98.799	1.227	1739.79	1697.36	0.11	0.115
20	1753.29	99.022	1.027	1768.72	1739.79	0.066	0.072
21	1849.73	99.253	0.783	1865.17	1826.59	0.052	0.057
22	2368.59	93.747	4.814	2397.52	2351.23	0.664	0.431
23	2661.77	99.783	0.072	2679.13	2565.33	0.066	0.023
24	2852.72	98.706	0.54	2873.94	2748.56	0.318	0.023
25	2924.09	98.097	0.992	2953.02	2873.94	0.433	0.122
26	2956.87	99.051	0.069	3008.95	2953.02	0.115	-0.01
27	3448.72	71.887	14.512	3562.52	3049.46	36.373	15.174



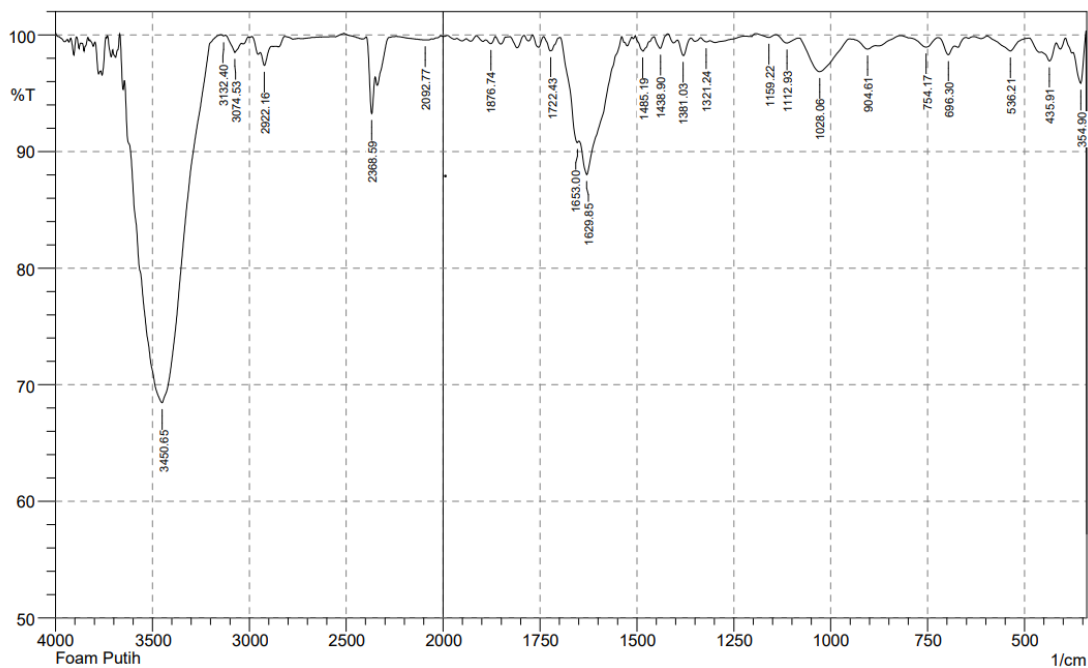
No.	Peak	Intensity	Corr. Intensity	Base (H)	Base (L)	Area	Corr. Area
1	354.9	95.361	4.81	374.19	341.4	0.322	0.341
2	430.13	97.94	1.753	447.49	416.62	0.157	0.119
3	468.7	97.95	1.901	493.78	447.49	0.201	0.17
4	536.21	97.47	2.294	594.08	493.78	0.534	0.426
5	673.16	98.82	0.695	684.73	657.73	0.093	0.04
6	698.23	98.595	0.968	725.23	684.73	0.132	0.073
7	752.24	99.508	0.451	794.67	725.23	0.081	0.067
8	875.68	98.052	0.895	891.11	821.68	0.303	0.091
9	910.4	97.95	1.11	950.91	891.11	0.307	0.119
10	1031.92	96.257	1.084	1083.99	1018.41	0.674	0.168
11	1114.86	98.753	1.077	1138	1083.99	0.154	0.113
12	1161.15	99.105	0.722	1197.79	1138	0.135	0.088
13	1257.59	98.594	0.24	1265.3	1219.01	0.168	0.015
14	1346.31	99.378	0.585	1357.89	1332.81	0.035	0.031
15	1379.1	98.486	1.331	1392.61	1357.89	0.115	0.091
16	1440.83	98.73	1.441	1450.47	1421.54	0.068	0.089
17	1469.76	98.662	0.178	1473.62	1465.9	0.042	0.003
18	1523.76	98.788	1.163	1535.34	1516.05	0.064	0.065
19	1631.78	94.891	2.676	1645.28	1610.56	0.599	0.216
20	1658.78	95.714	3.239	1674.21	1645.28	0.324	0.201
21	1722.43	96.294	2.29	1735.93	1691.57	0.377	0.198
22	1807.3	98.773	1.256	1822.73	1791.87	0.088	0.091
23	1851.66	98.622	1.179	1863.24	1838.16	0.083	0.061
24	1874.81	98.734	0.965	1888.31	1863.24	0.087	0.053
25	2368.59	91.352	6.511	2395.59	2353.16	0.888	0.572
26	2860.43	98.171	0.423	2885.51	2769.78	0.453	-0.029
27	2922.16	96.243	1.5	2945.3	2885.51	0.724	0.156
28	2954.95	97.314	0.508	3007.02	2945.3	0.39	0.035
29	3037.89	99.578	0.163	3047.53	3007.02	0.045	0.013
30	3429.43	78.85	0.901	3500.8	3439.08	6.021	0.207



No.	Peak	Intensity	Corr. Intensity	Base (H)	Base (L)	Area	Corr. Area
1	356.83	96.236	3.108	374.19	341.4	0.353	0.253
2	433.98	97.215	2.099	486.06	416.62	0.433	0.278
3	540.07	91.653	8.171	601.79	487.99	2.206	2.119
4	623.01	98.435	1.398	648.08	603.72	0.153	0.122
5	698.23	90.686	5.947	721.38	648.08	1.811	1.018
6	765.74	90.303	1.513	821.68	756.1	1.593	0.206
7	840.96	97.053	2.883	862.18	821.68	0.243	0.231
8	906.54	93.46	6.475	933.55	862.18	0.734	0.715
9	968.27	97.135	2.71	989.48	947.05	0.264	0.235
10	1028.06	93.34	4.805	1049.28	989.48	0.961	0.568
11	1066.64	95.399	2.845	1095.57	1049.28	0.606	0.315
12	1112.93	98.852	1.061	1134.14	1095.57	0.111	0.097
13	1155.36	95.65	2.784	1168.86	1134.14	0.398	0.201
14	1246.02	99.362	0.531	1261.45	1224.8	0.064	0.045
15	1319.31	95.579	1.655	1334.74	1261.45	0.886	0.315
16	1375.25	94.192	3.465	1396.46	1357.89	0.683	0.317
17	1442.75	90.634	6.849	1469.76	1415.75	1.504	0.919
18	1490.97	90.717	6.806	1514.12	1471.69	1.105	0.658
19	1544.98	98.078	1.525	1556.55	1537.27	0.098	0.067
20	1598.99	88.061	9.94	1624.06	1556.55	2.042	1.566
21	1660.71	95.884	3.318	1672.28	1643.35	0.305	0.227
22	1749.44	95.953	3.268	1768.72	1730.15	0.406	0.274
23	1805.37	94.05	5.964	1840.09	1768.72	0.742	0.747
24	1874.81	93.956	5.936	1911.46	1840.09	0.928	0.894
25	1946.18	93.115	6.791	1986.68	1913.39	1.091	1.062
26	2254.79	99.721	0.274	2281.79	2227.78	0.033	0.031
27	2370.51	89.791	8.225	2395.59	2353.16	1.071	0.739
28	2601.97	99.326	0.314	2617.4	2588.47	0.065	0.02
29	2721.56	99.565	0.284	2744.71	2669.48	0.088	0.047
30	2848.86	90.49	4.208	2875.86	2791	1.926	0.548
31	3080.32	91.52	4.999	3126.61	3043.67	2.264	1.081
32	3161.33	99.427	0.418	3176.76	3140.11	0.052	0.03
33	3450.65	80	0.99	3498.87	3437.15	5.682	0.23

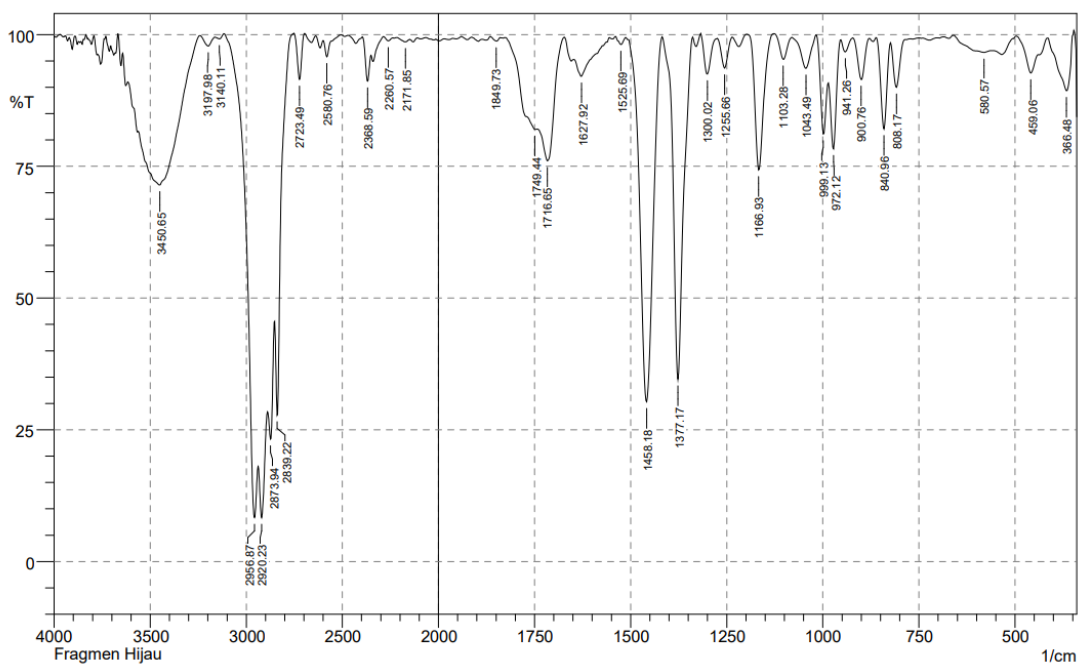


No.	Peak	Intensity	Corr. Intensity	Base (H)	Base (L)	Area	Corr. Area
1	364.55	88.05	1.446	366.48	341.4	0.653	0.009
2	383.83	89.048	1.563	401.19	378.05	0.971	0.054
3	430.13	94.839	1.565	449.41	424.34	0.336	0.079
4	468.7	98.984	1.164	482.2	449.41	0.056	0.076
5	509.21	97.649	2.269	524.64	486.06	0.192	0.185
6	538.14	99.221	0.681	569	524.64	0.065	0.064
7	644.22	98.929	1.115	657.73	619.15	0.103	0.104
8	702.09	99.449	0.526	723.31	682.8	0.063	0.056
9	763.81	95.756	4.206	792.74	723.31	0.629	0.609
10	815.89	97.084	2.582	840.96	792.74	0.337	0.263
11	850.61	99.109	0.425	866.04	840.96	0.067	0.027
12	914.26	98.119	1.709	947.05	885.33	0.244	0.202
13	1037.7	87.087	12.905	1143.79	947.05	6.406	6.393
14	1159.22	99.449	0.415	1182.36	1143.79	0.054	0.031
15	1228.66	92.509	7.302	1276.88	1184.29	1.397	1.321
16	1311.59	94.345	5.608	1340.53	1278.81	0.729	0.714
17	1379.1	95.689	3.353	1394.53	1354.03	0.43	0.287
18	1409.96	93.828	5.449	1427.32	1394.53	0.506	0.409
19	1442.75	98.518	1.523	1454.33	1427.32	0.062	0.068
20	1517.98	90.486	0.808	1519.91	1487.12	0.988	0.092
21	1600.92	90.046	4.928	1616.35	1573.91	1.379	0.658
22	1658.78	96.34	1.68	1676.14	1651.07	0.238	0.076
23	1726.29	90.559	8.565	1770.65	1687.71	1.831	1.528
24	1811.16	99.188	0.465	1824.66	1805.37	0.043	0.022
25	1853.59	98.846	0.882	1863.24	1843.95	0.054	0.031
26	1928.82	99.554	0.363	1942.32	1915.31	0.027	0.017
27	2135.2	99.127	0.118	2218.14	2121.7	0.214	-0.008
28	2366.66	94.708	2.957	2393.66	2349.3	0.666	0.28
29	2870.08	95.699	1.025	2889.37	2789.07	0.997	0.078
30	2926.01	95.012	1.615	2951.09	2889.37	1.176	0.222
31	2970.38	96.673	1.299	3010.88	2953.02	0.538	0.17
32	3032.1	99.471	0.357	3047.53	3010.88	0.054	0.031
33	3448.72	63.645	2.18	3647.39	3433.29	30.989	4.467

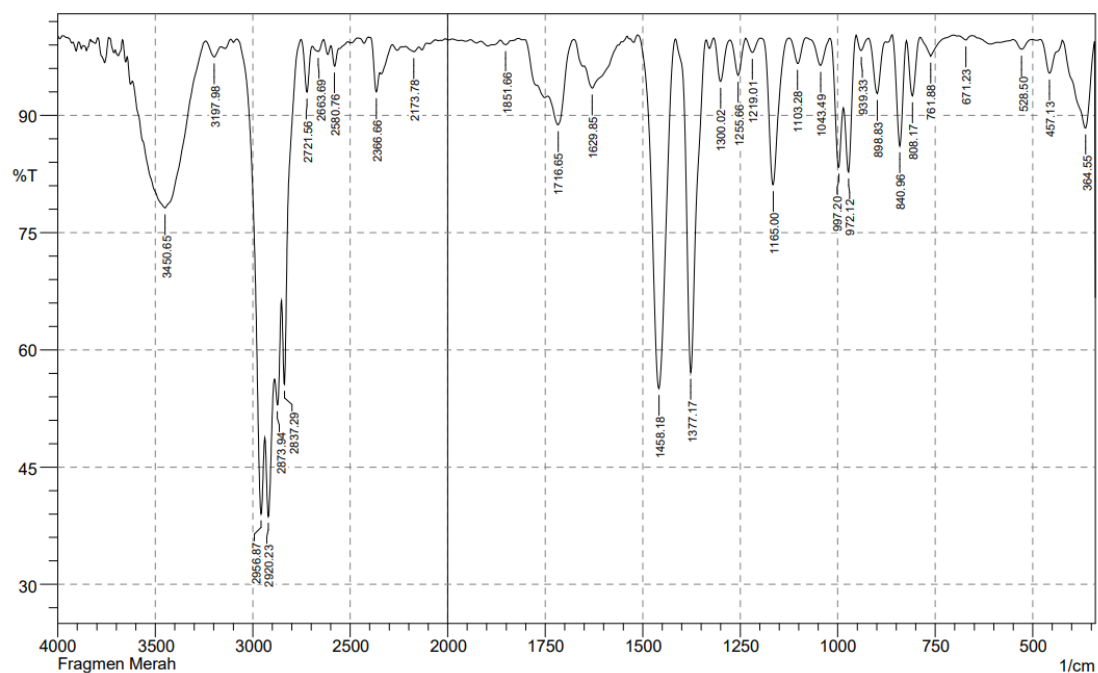


	Peak	Intensity	Corr. Intensity	Base (H)	Base (L)	Area	Corr. Area
1	354.9	95.856	3.714	374.19	341.4	0.376	0.291
2	435.91	97.773	1.196	457.13	418.55	0.281	0.101
3	536.21	98.621	1.194	596	489.92	0.319	0.24
4	696.3	98.288	1.012	723.31	680.87	0.19	0.079
5	754.17	98.946	0.874	819.75	723.31	0.213	0.15
6	904.61	98.782	0.498	943.19	883.4	0.22	0.054
7	1028.06	96.848	2.857	1082.07	950.91	1.043	0.871
8	1112.93	99.304	0.579	1141.86	1082.07	0.105	0.074
9	1159.22	99.786	0.267	1193.94	1141.86	0.014	0.029
10	1321.24	99.401	0.206	1334.74	1311.59	0.05	0.012
11	1381.03	98.227	1.405	1396.46	1359.82	0.157	0.101
12	1438.9	98.85	1.105	1456.26	1419.61	0.087	0.081
13	1485.19	98.608	1.288	1504.48	1456.26	0.163	0.139
14	1629.85	88.02	4.443	1649.14	1539.2	3.346	1.068
15	1653	90.752	0.853	1697.36	1649.14	1.08	0.059
16	1722.43	98.63	1.195	1741.72	1697.36	0.14	0.106
17	1876.74	99.25	0.482	1890.24	1865.17	0.06	0.029
18	2092.77	99.563	0.024	2241.28	2086.98	0.201	0.014
19	2368.59	93.249	4.443	2397.52	2351.23	0.775	0.39
20	2922.16	97.38	1.302	2943.37	2885.51	0.455	0.14
21	3074.53	98.487	1.07	3122.75	3041.74	0.307	0.175
22	3132.4	99.921	0.076	3145.9	3122.75	0.004	0.004
23	3450.65	68.461	29.146	3643.53	3147.83	40.575	36.303





	Peak	Intensity	Corr. Intensity	Base (H)	Base (L)	Area	Corr. Area
1	366.48	89.357	10.99	412.77	347.19	1.748	1.763
2	459.06	92.728	4.676	495.71	439.77	1.009	0.488
3	580.57	96.636	0.913	657.73	561.29	1.073	0.388
4	808.17	89.997	8.679	823.6	785.03	0.907	0.694
5	840.96	82.095	16.602	860.25	825.53	1.52	1.328
6	900.76	91.486	7.841	921.97	879.54	0.793	0.668
7	941.26	96.74	2.406	952.84	921.97	0.275	0.166
8	972.12	78.357	16.024	985.62	954.76	1.834	1.154
9	999.13	81.148	13.164	1016.49	987.55	1.544	0.876
10	1043.49	93.589	6.169	1080.14	1018.41	0.844	0.767
11	1103.28	95.298	4.503	1128.36	1080.14	0.44	0.401
12	1166.93	74.34	25.77	1197.79	1128.36	3.037	3.073
13	1255.66	93.663	5.723	1274.95	1236.37	0.568	0.465
14	1300.02	92.525	7.308	1317.38	1274.95	0.676	0.628
15	1377.17	34.609	64.767	1417.68	1340.53	11.17	10.961
16	1458.18	30.31	68.817	1504.48	1419.61	16.318	15.991
17	1525.69	98.14	1.42	1539.2	1512.19	0.139	0.088
18	1627.92	92.078	3.948	1647.21	1564.27	1.749	0.625
19	1716.65	76.068	12.428	1741.72	1674.21	4.717	1.834
20	1749.44	82.014	1.273	1824.66	1743.65	3.976	0.495
21	1849.73	98.774	0.734	1865.17	1840.09	0.096	0.046
22	2171.85	98.61	0.592	2216.21	2148.7	0.31	0.092
23	2260.57	98.829	0.656	2285.65	2237.43	0.179	0.072
24	2368.59	91.145	6.287	2395.59	2351.23	1.016	0.573
25	2580.76	95.81	3.294	2600.04	2507.46	0.616	0.38
26	2723.49	91.506	8.723	2752.42	2696.48	0.893	0.949
27	2839.22	27.814	25.276	2852.72	2754.35	15.626	3.898
28	2873.94	23.208	12.757	2889.37	2854.65	18.527	3.283
29	2920.23	8.344	13.532	2937.59	2891.3	38.138	8.412
30	2956.87	8.322	17.77	3115.04	2939.52	47.41	8.081
31	3140.11	99.197	0.633	3163.26	3116.97	0.104	0.07
32	3197.98	97.827	1.818	3242.34	3163.26	0.419	0.304
33	3450.65	71.46	16.564	3562.52	3244.27	29.354	15.286



No.	Peak	Intensity	Corr. Intensity	Base (H)	Base (L)	Area	Corr. Area
1	364.55	88.376	10.752	422.41	343.33	2.372	2.112
2	457.13	95.386	4.286	482.2	424.34	0.573	0.488
3	528.5	98.455	1.25	551.64	503.42	0.175	0.114
4	671.23	99.662	0.535	690.52	655.8	0.006	0.035
5	761.88	97.562	2.414	788.89	723.31	0.294	0.285
6	808.17	92.487	7.263	823.6	788.89	0.584	0.55
7	840.96	86.116	13.613	860.25	825.53	1.111	1.075
8	898.83	92.786	6.854	921.97	877.61	0.642	0.574
9	939.33	98.305	1.778	952.84	921.97	0.115	0.123
10	972.12	82.761	12.012	985.62	952.84	1.461	0.846
11	997.2	83.35	10.087	1018.41	987.55	1.438	0.721
12	1043.49	96.404	3.495	1080.14	1020.34	0.389	0.365
13	1103.28	96.637	3.286	1124.5	1080.14	0.294	0.279
14	1165	81.116	18.762	1197.79	1126.43	2.323	2.285
15	1219.01	98.053	1.81	1236.37	1197.79	0.169	0.147
16	1255.66	95.128	4.63	1276.88	1236.37	0.425	0.382
17	1300.02	94.335	5.452	1317.38	1276.88	0.494	0.454
18	1377.17	57.134	42.56	1415.75	1338.6	6.372	6.269
19	1458.18	55.04	44.883	1512.19	1417.68	9.33	9.314
20	1629.85	93.471	3.432	1649.14	1564.27	1.63	0.757
21	1716.65	88.802	6.633	1743.65	1678.07	2.022	0.898
22	1851.66	99.05	0.558	1865.17	1838.16	0.082	0.036
23	2173.78	98.16	0.612	2216.21	2146.77	0.471	0.101
24	2366.66	93.002	3.88	2405.23	2349.3	0.853	0.293
25	2580.76	96.287	2.74	2600.04	2511.32	0.655	0.334
26	2663.69	98.193	1.104	2694.56	2636.69	0.34	0.155
27	2721.56	92.976	6.266	2752.42	2694.56	0.888	0.704
28	2837.29	55.582	15.939	2852.72	2754.35	8.754	1.693
29	2873.94	52.965	7.285	2887.44	2854.65	8.058	1.066
30	2920.23	38.692	12.755	2937.59	2889.37	16.235	2.75
31	2956.87	39.025	15.853	3080.32	2939.52	19.313	3.057
32	3197.98	97.476	1.633	3242.34	3163.26	0.567	0.275
33	3450.65	78.169	18.487	3616.53	3242.34	24.046	18.974