

DAFTAR PUSTAKA

- Anshari, A.M., 2020. Tesis: *Analisis Neraca Air Pascatambang Pada Tailing Storage Facility*. ITB, Bandung.
- Arsyad, S., 2006. *Konservasi Tanah dan Air*. Penerbit IPB Press. Bandung.
- Bambang, T., 2008. Buku: *"Hidrologi Terapan"*. Yogyakarta.
- Castendyk, D. N., Eary L.E., 2009. *Modeling and Management of Pit Lake Water Chemistry 1: Theory*. united state geological survey. United state.
- Chay, A., 2002. *Hidrologi dan Pengelolaan Daerah Aliran Sungai*. UGM. Yogyakarta.
- Hansen, V. E., 1986. *Dasar-dasar dan Praktek Irigasi*. Jakarta
- Limantara, Lily, M., 2010. *Hidrologi Praktis*. Bandung: Lubuk Agung.
- Limantara., dan Suhartono, E., 2016. *Analisis Hujan dan Tata guna Lahan Terhadap Limpasan Permukaan di Sub DAS Pekalen Kabupaten Probolinggo*. Jurnal Teknik Pengairan. Vol. 7 No. 1 hal. 83-94.
- Loebis, J., Soewarno, B., Supriyadi., 1993. *Hidrologi Sungai*. Chandy Buana Kharisma. Jakarta.
- Moghadas, S., 2009. *Long-term Water Balance of an Inland River Basin in an Arid Area, North-Western China, Master of Science Thesis in Water Resources Division of Water Resources Lund Institute of Technology*. Lund University. Sweden.
- Richard G. A., Luis S. P., Dirk R., Martin S., 1998. *Fao Irrigation And Drainage Paper No.56 Crop Evapotranspiration (guidlines for computing crop water requirements)*. Food And Agriculture Organization Of The United Nations, Rome
- Schwerdtfeger, J., Weiler, M., Johnson, M. S., and Couto, E. G., 2014. *Estimating water balance components of tropical wetland lakes in the Pantanal dry season*. Hydrological Sciences Journal. Brazil.
- Shevenell, L., 2000. *Analytical method for predicting filling rates of mining pit lakes: example from the Getchell Mine. Nevada*. Mining Engineering, hal : 53-60.
- Sosrodarsono, S., dan Takeda K., 1993. *Hidrologi Untuk Pengairan*. Terjemahan Pradnya Paramitha. Jakarta.
- Suripin., 2004. *Pelestarian Sumberdaya Tanah dan Air*. Yogyakarta.
- Sugiyono., 2013. *Metode Penelitian Kuantitatif, Kualitatif dan R&D*. Bandung.
- Suwandhi, A., 2004. *Perencanaan Sistem Penyaliran Tambang*. Diklat Perencanaan Tambang Terbuka. UNISBA. Bandung.

Thornthwaite, C. W., dan Mather, J. R., 1957. *Instruction and Table For Computing Potential Evapotranspiration and the Water Balance*. Publication in Climatology. 185-204.

Ufoegbune., G. C., Yusuf, H. O., Eruola A. O., dan Awomeso J. A., 2011. *Estimation of Water Balance of Oyan Lake in the North West Region of Abeokuta*. Nigeria. British Journal of Environment & Climate hal: 13-27.

LAMPIRAN

LAMPIRAN A

DATA CURAH HUJAN

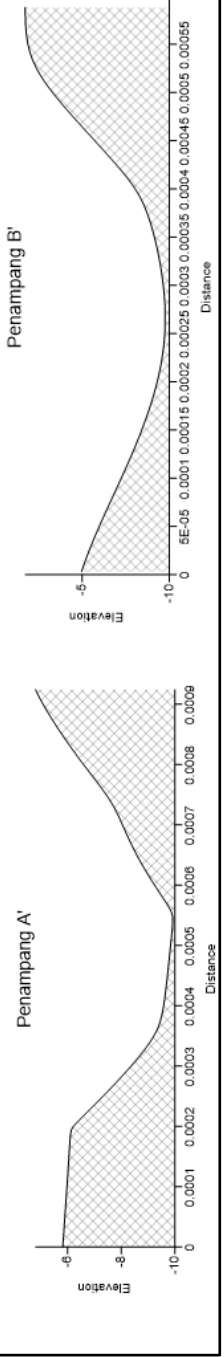
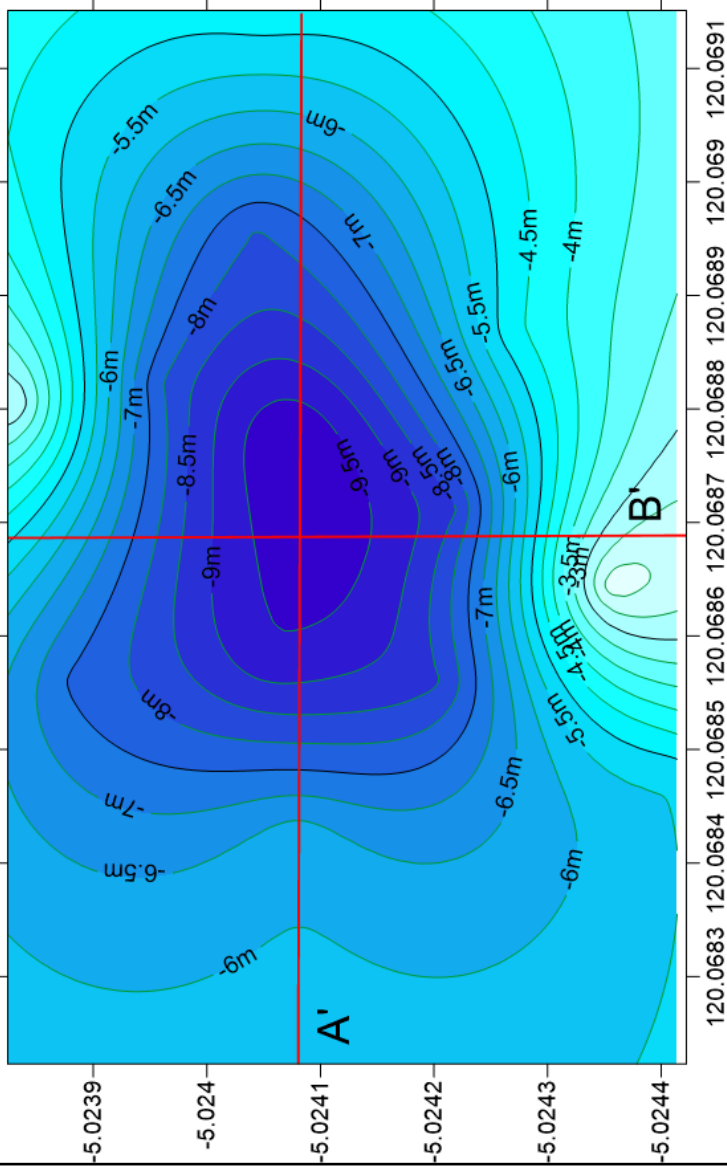
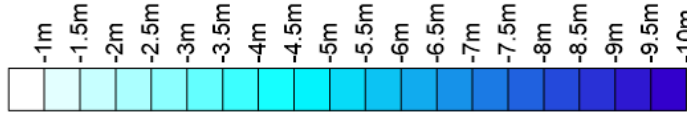
Data Curah Hujan 8 tahun Kabupaten Bone Periode 2013-2020

No	Tahun	Bulan											
		Januari	Februari	Maret	April	Mei	Juni	Juli	Agustus	September	Oktober	November	Desember
1	2013	198	160	277	279	424	216	300	201	253	462	453	28
2	2014	24	117	217	266	303	39	201	37	175	253	418	389
3	2015	244	221	199	458	113	138	204	140	87	137	243	233
4	2016	202	184	251	379	218	164	304	29	63	242	52	49
5	2017	21	93	203	72	408	424	205	72	76	75	239	194
6	2018	239	188	137	109	709	664	143	33	25	1	195	123
7	2019	174	203	97	332	320	555	122	0	11	4	62	231
8	2020	204	132	188	253	452	702	349	47	188	147	251	35
	Maksimum	244	221	277	458	709	702	349	201	253	462	453	389
	Rata-rata	163.25	162.25	196.125	268.5	368.375	362.75	228.5	69.875	109.75	165.125	239.125	160.25
	Minimum	21	93	97	72	113	39	122	0	11	1	52	28

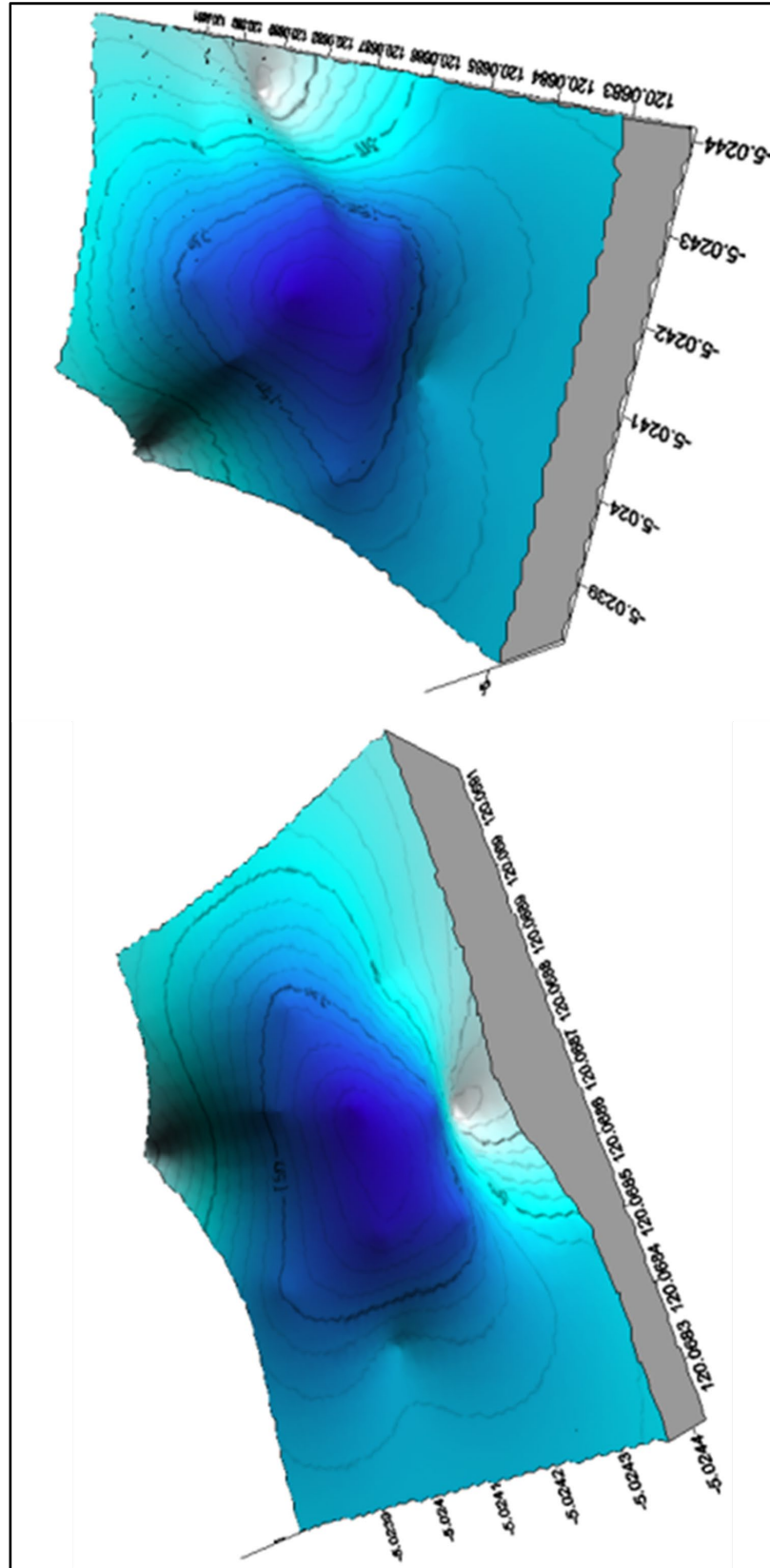
LAMPIRAN B

PETA BATIMETRI

PETA BATIMETRI VOID



BENTUK 3D PETA BATIMETRI VOID



LAMPIRAN C
DATA EVAPOTRANSPIRASI

Data Temperatur Kabupaten Bone selama 8 tahun, periode 2012 -2020

Bulan	Rata-rata Suhu dan Kelembaban Udara menurut bulan (C)										Max	Average	Min
	Suhu Udara												
	2013	2014	2015	2016	2017	2018	2019	2020					
Januari	26.60	26.40	26.30	26.70	26.50	27.60	26.50	25.40	27.60	26.50	25.40	26.50	25.40
Februari	25.50	25.30	25.40	26.50	26.40	26.20	26.00	26.70	26.70	26.00	25.30	26.00	25.30
Maret	25.90	26.30	25.10	25.40	25.30	26.30	26.40	26.50	26.50	26.40	25.10	25.90	25.10
April	26.00	26.40	25.40	26.10	26.30	26.40	26.50	26.60	26.60	26.40	25.40	26.21	25.40
Mei	25.70	25.10	24.90	25.70	25.40	25.60	26.10	29.00	29.00	26.10	24.90	25.94	24.90
Juni	24.90	25.50	25.80	24.90	25.10	25.20	25.50	25.50	25.80	25.50	24.90	25.30	24.90
Juli	25.10	25.80	25.10	25.40	25.40	25.10	24.80	25.50	25.80	24.80	24.80	25.28	24.80
Agustus	25.30	26.40	25.30	24.60	24.90	25.30	24.90	25.80	26.40	24.90	24.60	25.31	24.60
September	25.90	27.40	25.50	26.10	25.80	25.90	25.40	26.40	27.40	25.40	25.40	26.05	25.40
Oktober	27.10	27.60	27.10	27.90	27.30	27.10	27.00	27.40	27.90	27.00	27.00	27.31	27.00
November	26.60	26.60	26.60	28.70	27.10	26.60	28.00	27.60	28.70	28.00	26.60	27.23	26.60
Desember	27.80	26.60	27.00	26.60	26.50	27.00	28.00	25.40	28.00	28.00	25.40	26.86	25.40

Data evapotranspirasi rata-rata

No	Bulan	Suhu	i	ETP (mm/bulan)	Faktor Pengali (Lintang 5°)	ETP Koreksi (mm/bulan)	ETP Koreksi (m/bulan)
1	Januari	26.50	12.49	129.98	1.02	132.58	0.13
2	Februari	26.00	12.13	121.47	0.93	112.97	0.11
3	Maret	25.90	12.06	119.82	1.03	123.41	0.12
4	April	26.21	12.29	125.04	1.02	127.54	0.13
5	Mei	25.94	12.09	120.44	1.06	127.66	0.13
6	Juni	25.30	11.64	110.24	1.03	113.55	0.11
7	Juli	25.28	11.63	109.86	1.06	116.45	0.12
8	Agustus	25.31	11.65	110.44	1.05	115.96	0.12
9	September	26.05	12.17	122.30	1.01	123.53	0.12
10	Oktober	27.31	13.07	144.71	1.03	149.05	0.15
11	November	27.23	13.01	143.07	0.99	141.64	0.14
12	Desember	26.86	12.75	136.41	1.02	139.14	0.14
		I	146.99			1523.48	1.52
		a	3.55				

LAMPIRAN D
PERHITUNGAN VOLUME
LIMPASAN

Hasil Perhitungan Volume Limpasan

Volume presipitasi	Volume Evapotranspirasi	Volume Limpasan
8565.29	8503.55	61.74
7736.39	7245.69	490.70
8565.29	7915.63	649.66
8288.99	8180.16	108.83
8565.29	8188.18	377.11
8288.99	7282.91	1006.08
8565.29	7468.74	1096.55
8565.29	7437.37	1127.92
8288.99	7922.89	366.10
8565.29	9559.93	-994.64
8288.99	9084.47	-795.48
8565.29	8924.28	-358.99

LAMPIRAN E

DOKUMENTASI LAPANGAN

Gambar Void Bekas Tambang (*Pitlake*)



Gambar Bekas *Stockpile*



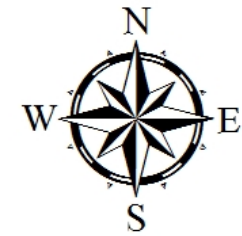
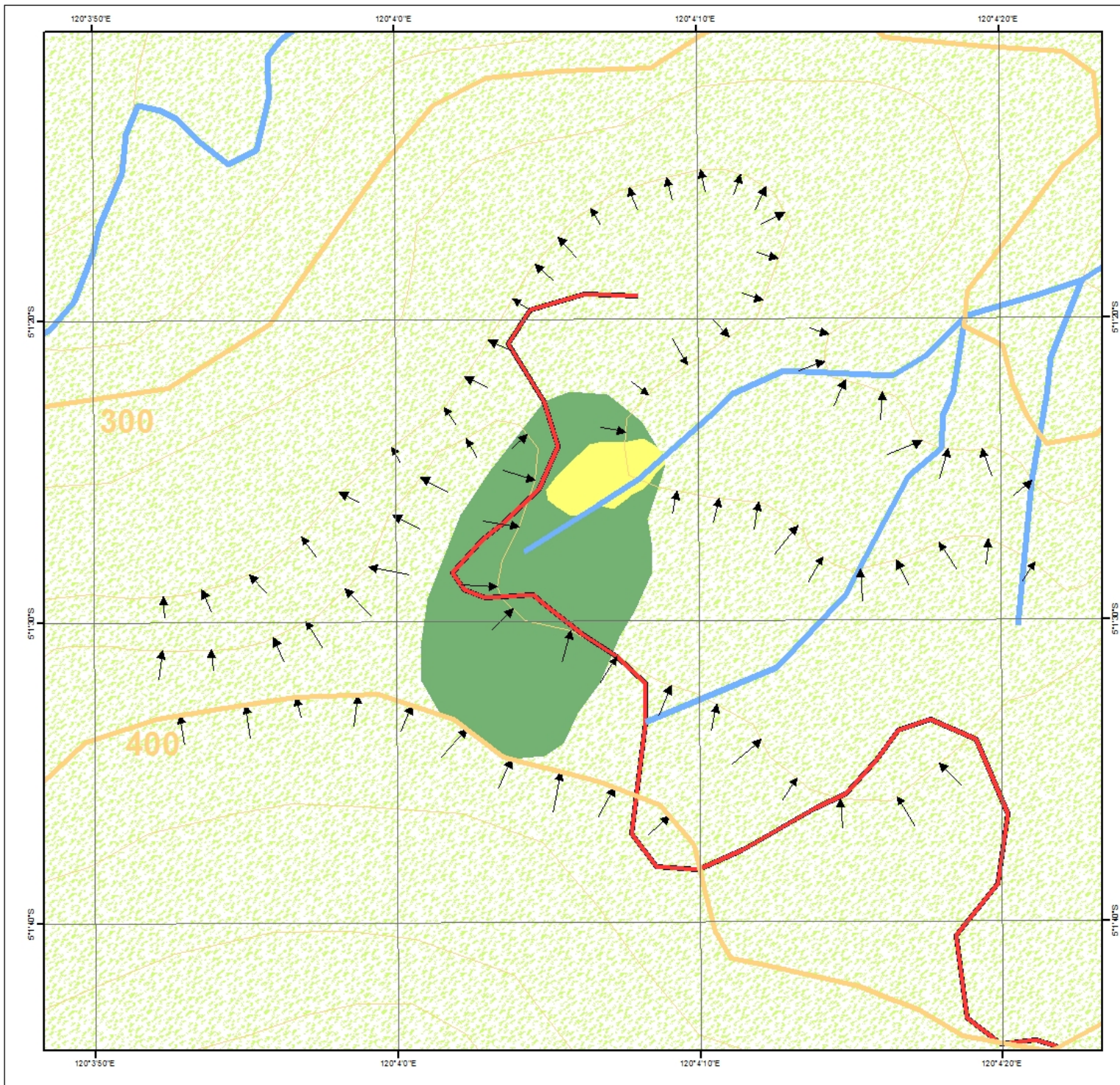
Gambar Bekas Jalan Tambang



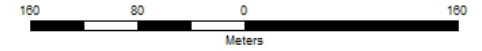
Gambar Pengambilan Data dan Sampel Pada Void



LAMPIRAN F
PETA *CATCHMENT AREA*



PETA CATCHMENT AREA



Legenda



Indeks Peta

