

## DAFTAR PUSTAKA

- A. Yahya, M. (2019). *RACANGAN BANGUN SISTEM BANGUNAN CERDAS BERBASIS INTERNET OF THINGS*. Makassar: Politeknik Negeri Ujung Pandang.
- Cahyo, K. Y. (2020). PEMANFAATAN UV-C CHAMBER SEBAGAI DISINFEKTAN ALAT PELINDUNG DIRI UNTUK PENCEGAHAN PENYEBARAN VIRUS CORONA. *Jurnal Abdi Insani Universitas Mataram*, 87-92.
- Cao, W. (2019). APPLICATION OF SUPPORT VECTOR MACHINE-BASED SPEECH RECOGNITION TECHNOLOGY IN HUMAN-COMPUTER INTERACTION TECHNOLOGY. *International Journal of Mechantronics and Applied Mechanics*, Issue 5, 70-74.
- Dioses, J. (2020). AndroiDuino-Fan: A Speech Recognition Fan-Speed Control System utilizing Filipino Voice Commands. *International Journal of Advance Trends in Computer Science and Engineering*, Volume 9, Number 3, 3042-3047.
- Erni, D. (2009). *Rancang Bangun Program Visualisasi Pergerakan Differential Drive Mobile Robot*. Surabaya: Politeknik Elektronika Negeri Surabaya.
- F, M. (2018). *Perancangan Pengaplikasian Internet of Things Pada Robot Pemotong Rumput Berbaasis Arduino Mega 2560 Dengan ESP8266*. Palembang: Universitas Sriwijaya.
- Fauzi, A. (2020). *SIMULASI CONTROL SMART HOME BERBASIS MEL FREQUENCY CEPSTRAL COEFFICIENTS MENGGUNAKAN METODE SUPPORT VECTOR MACHINE (SVM)*. Surabaya: Universitas Islam Negeri Sunan Ampel.
- Grieco L., R. A. (2014). Iotaided Robotics Application: Technological Implications, Target Domains and Open Issue. *Commun*, 32-47.
- Kurniawan, W. d. (2018). *Sejarah Cara Kerja dan Manfaat Internet of Things*. Batam: Program Studi Teknik Informatika Universitas Universal.
- Laksono, T. (2018). *SPEECH TO TEXT UNTUK BAHASA INDONESIA*. Yogyakarta: Universitas Islam Indonesia.
- Nada, Q. d. (2019). Speech Recognition dengan Hidden Markov Model untuk Pengenalan dan Pelafalan Huruf Hijaiyah. *AL-AZHAR INDONESIA SERI SAINS DAN TEKNOLOGI Vol. 5, No. 1*, 19-26.

Rizki Aditya, A. M. (2020). *Tempat Sampah Otomatis Speech Recognition Menggunakan Pocketsphinx*. Pontianak: Universitas Tanjungputra.

Vaipai, D. J. (2016). Et Al. Int. Journal of Engineering Research and Applications. *Journal of Engineering Research and Applications*, Vol. 6, Issue 2.

# LAMPIRAN

## Lampiran 1 Program pada code block MIT App Inventor

```
initialize global UVC to 0

when Button2 TouchDown
do
  if get global UVC = 0
  then
    call SpeechRecognizer1 .GetText
    set global UVC to 1

when Button1 Click
do
  open another screen screenName Remote

when Button2 TouchUp
do
  set global UVC to 0

when SpeechRecognizer1 .AfterGettingText
result partial
do
  set Label2 .Text to get result
  if get result = maju
  then
    set Label2 .Text to Maju
    set Web1 .Uri to https://ssrc.my.id/api/updatemotor.php?id=1&stat...
    set Web1 .RequestHeaders to
      make a list
      make a list Content-Type application/json
      make a list Connection Keep-Alive
    call Web1 .PatchText
      text Label2 .Text
  if get result = GO
  then
    set Label2 .Text to Maju
    set Web1 .Uri to https://ssrc.my.id/api/updatemotor.php?id=1&stat...
    set Web1 .RequestHeaders to
      make a list
      make a list Content-Type application/json
      make a list Connection Keep-Alive
    call Web1 .PatchText
      text Label2 .Text
  if get result = forward
  then
    set Label2 .Text to Maju
  if get result = kiril
  then
    set Label2 .Text to Kiril
    set Web1 .Uri to https://ssrc.my.id/api/updatemotor.php?id=1&stat...
    set Web1 .RequestHeaders to
      make a list
      make a list Content-Type
```

```

if (get result == Kir)
then
  set Label2 . Text to Kir
  set Web1 . Uri to https://ssrc.my.id/api/updatemotor.php?id=1&stat...
  set Web1 . RequestHeaders to
    make a list
    make a list Content-Type application/json
    make a list Connection
    make a list Keep-Alive
  call Web1 . PatchText
  text Label2 . Text

if (get result == turn left)
then
  set Label2 . Text to Kir
  set Web1 . Uri to https://ssrc.my.id/api/updatemotor.php?id=1&stat...
  set Web1 . RequestHeaders to
    make a list
    make a list Content-Type application/json
    make a list Connection
    make a list Keep-Alive
  call Web1 . PatchText
  text Label2 . Text

if (get result == kanan)
then
  set Label2 . Text to Kanan
  set Web1 . Uri to https://ssrc.my.id/api/updatemotor.php?id=1&stat...
  set Web1 . RequestHeaders to
    make a list
    make a list Content-Type application/json
    make a list Connection
    make a list Keep-Alive
  call Web1 . PatchText
  text Label2 . Text

if (get result == turn right)
then
  set Label2 . Text to Kanan
  set Web1 . Uri to https://ssrc.my.id/api/updatemotor.php?id=1&stat...
  set Web1 . RequestHeaders to
    make a list
    make a list Content-Type application/json

```

```

if (get result == turn right)
then
  set Label2 . Text to Kanan
  set Web1 . Uri to https://ssrc.my.id/api/updatemotor.php?id=1&stat...
  set Web1 . RequestHeaders to
    make a list
    make a list Content-Type application/json
    make a list Connection
    make a list Keep-Alive
  call Web1 . PatchText
  text Label2 . Text

if (get result == off)
then
  set Label2 . Text to UVC OFF
  set Web1 . Uri to https://ssrc.my.id/api/updatemotor.php?id=1&stat...
  set Web1 . RequestHeaders to
    make a list
    make a list Content-Type application/json
    make a list Connection
    make a list Keep-Alive
  call Web1 . PatchText
  text Label2 . Text

if (get result == on)
then
  set Label2 . Text to UVC ON
  set Web1 . Uri to https://ssrc.my.id/api/updatemotor.php?id=1&stat...
  set Web1 . RequestHeaders to
    make a list
    make a list Content-Type application/json
    make a list Connection
    make a list Keep-Alive
  call Web1 . PatchText
  text Label2 . Text

if (get result == stop)
then
  set Label2 . Text to Stop
  set Web1 . Uri to https://ssrc.my.id/api/updatemotor.php?id=1&stat...
  set Web1 . RequestHeaders to
    make a list
    make a list Content-Type

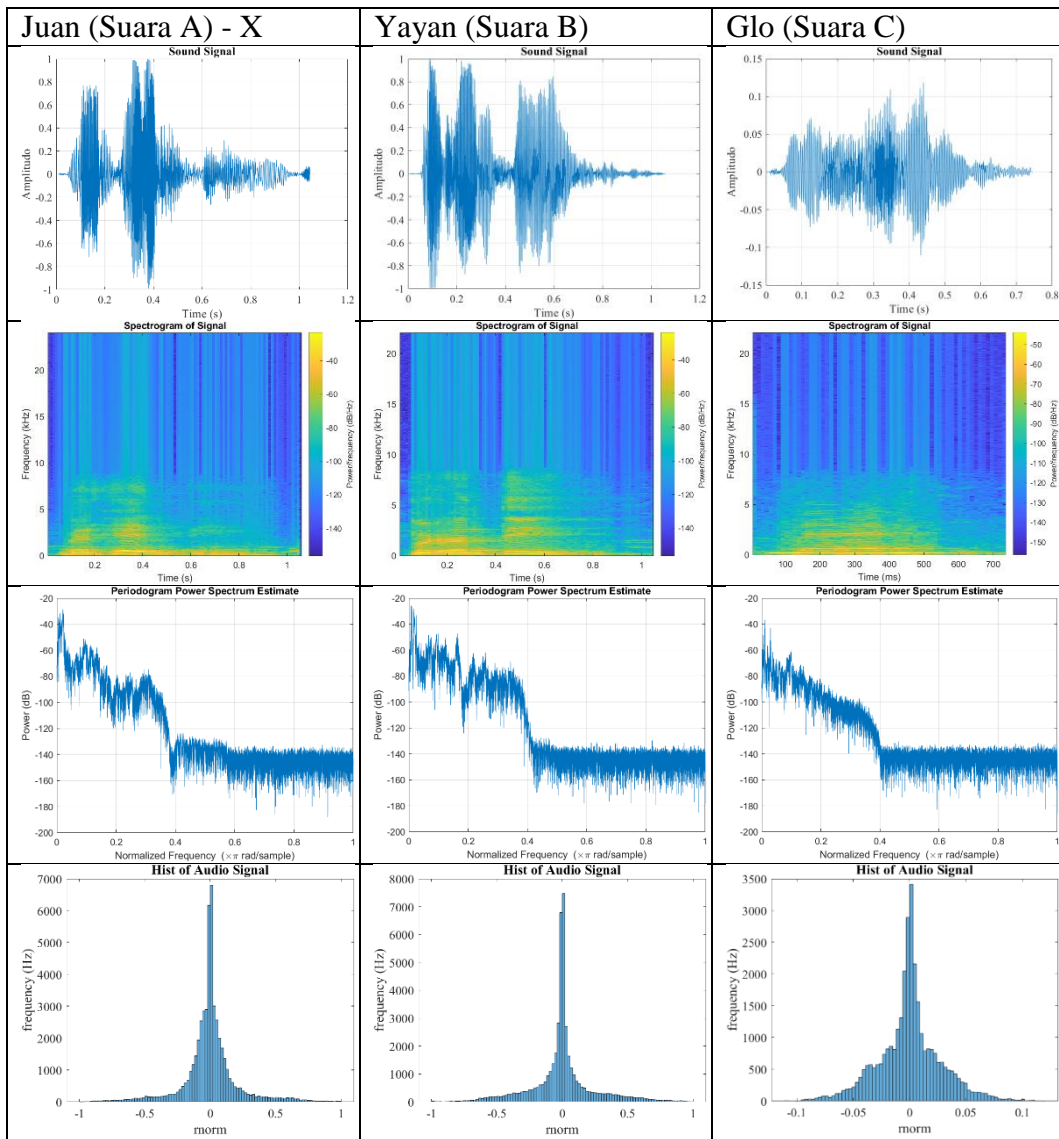
```

```

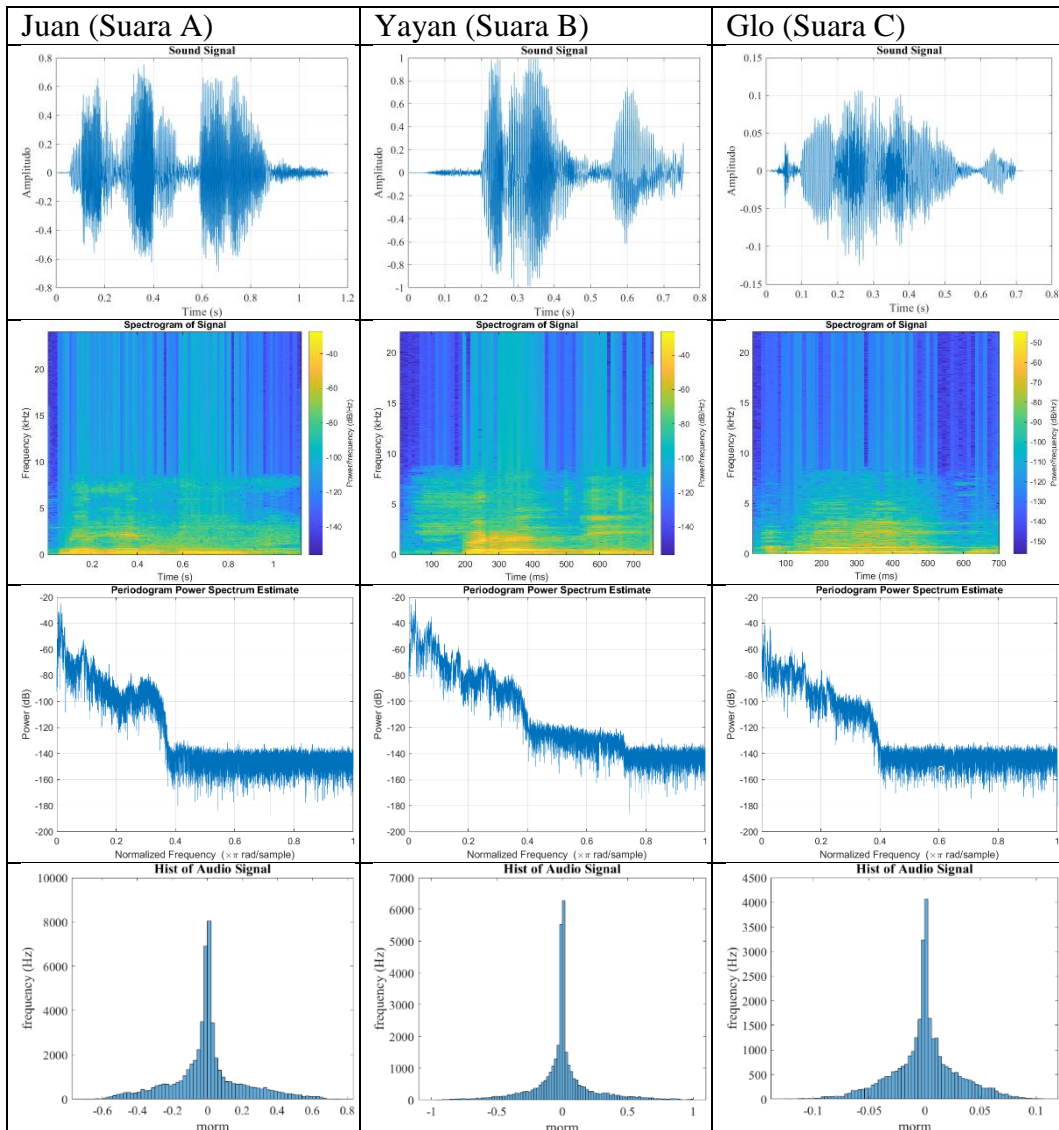
    call Web1 .PatchText
    text Label2 . Text
  }
  if get (result) = "stop"
  then
    set Label2 . Text to "Stop"
    set Web1 . Uri to "https://ssrc.my.id/api/updatemotor.php?id=1&stat..."
    set Web1 . RequestHeaders to
      make a list
      make a list "Content-Type"
      "application/json"
      make a list "Connection"
      "Keep-Alive"
    call Web1 .PatchText
    text Label2 . Text
  }
  if get (result) = "berhenti"
  then
    set Label2 . Text to "Stop"
    set Web1 . Uri to "https://ssrc.my.id/api/updatemotor.php?id=1&stat..."
    set Web1 . RequestHeaders to
      make a list
      make a list "Content-Type"
      "application/json"
      make a list "Connection"
      "Keep-Alive"
    call Web1 .PatchText
    text Label2 . Text
  }
  set global UVC to 0

```

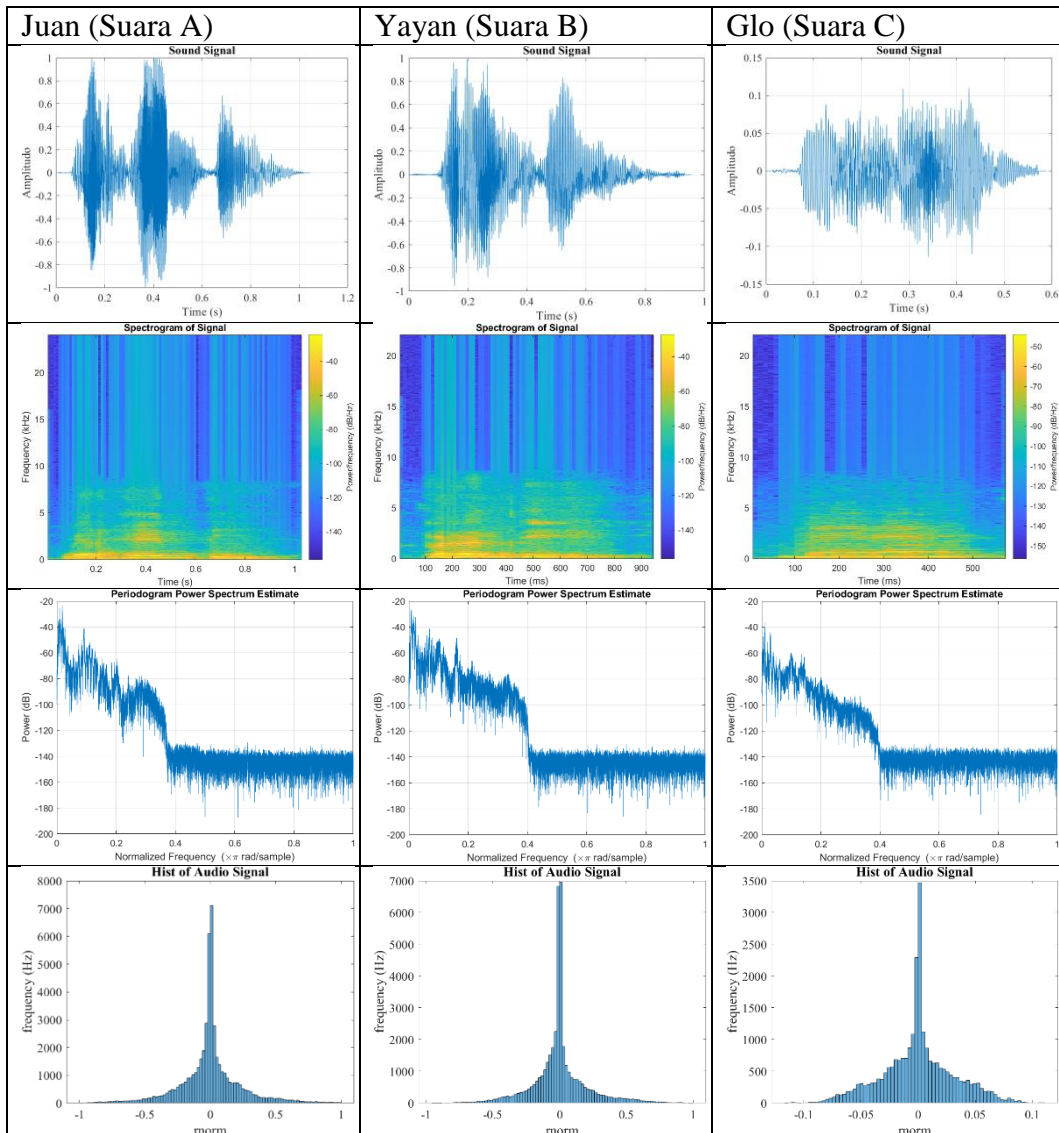
Lampiran 2 Sampel Grafik Speech Recognition  
Berhenti 10 cm



Berhenti 20 cm

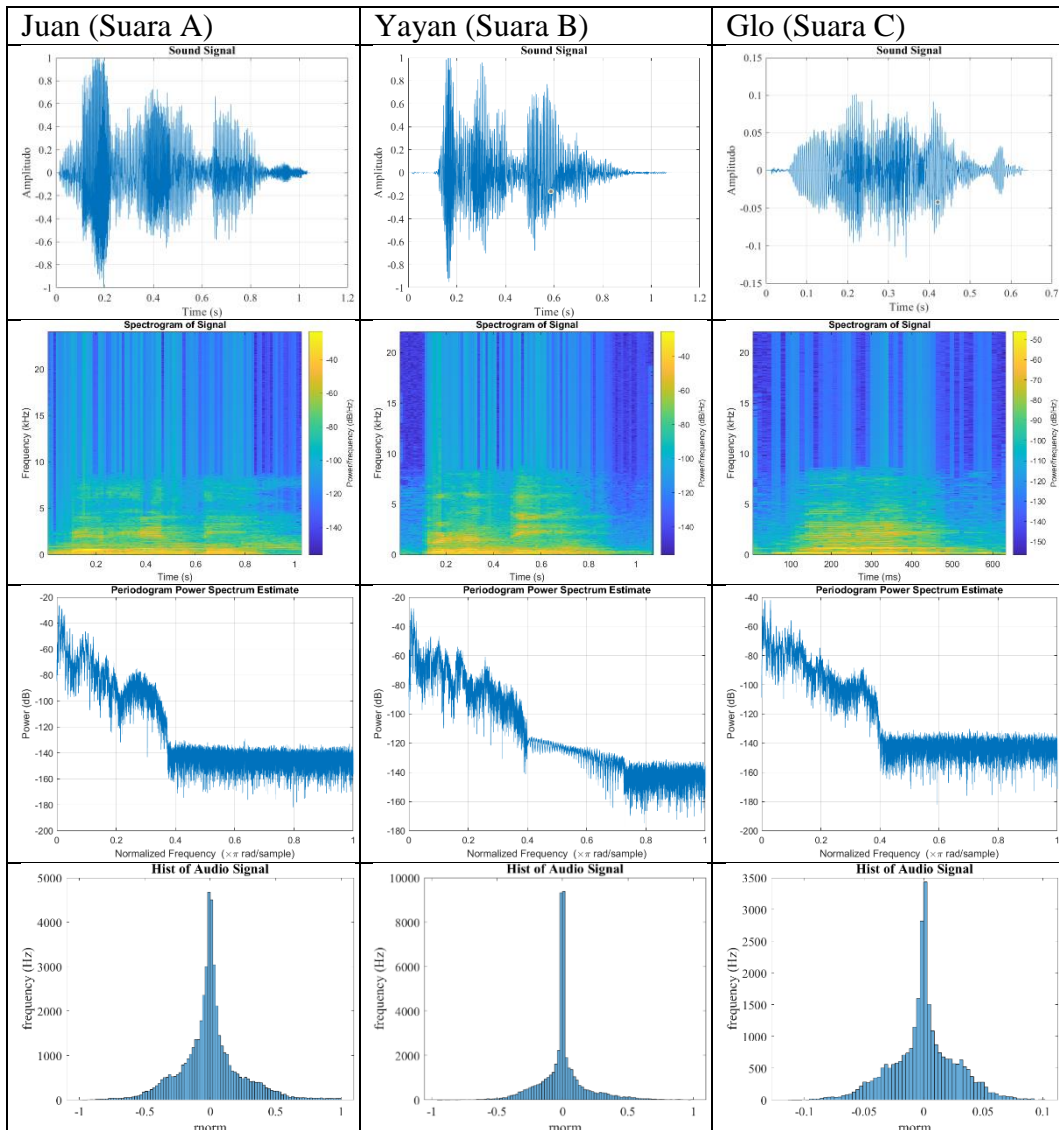


Berhenti 30 cm

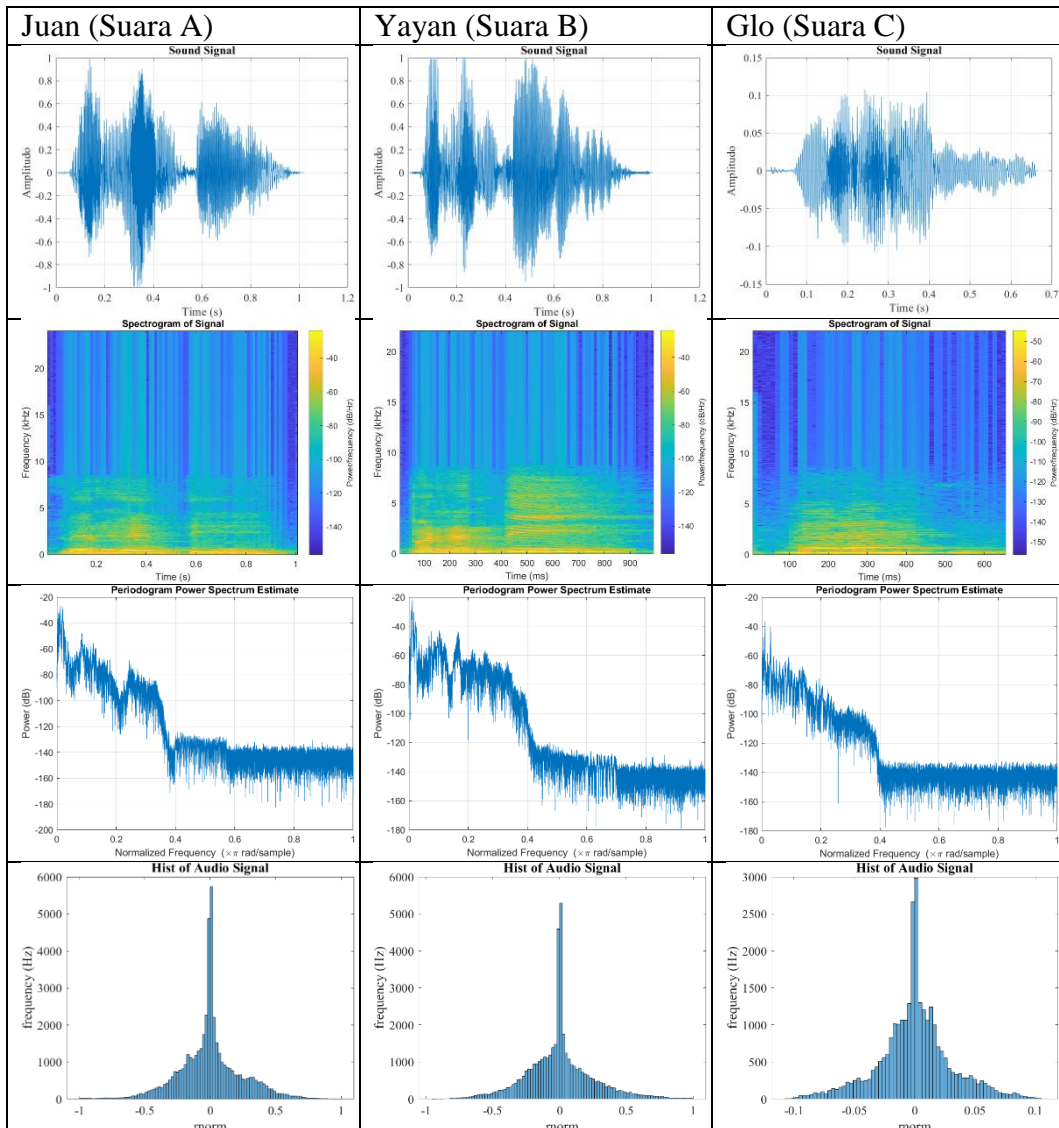




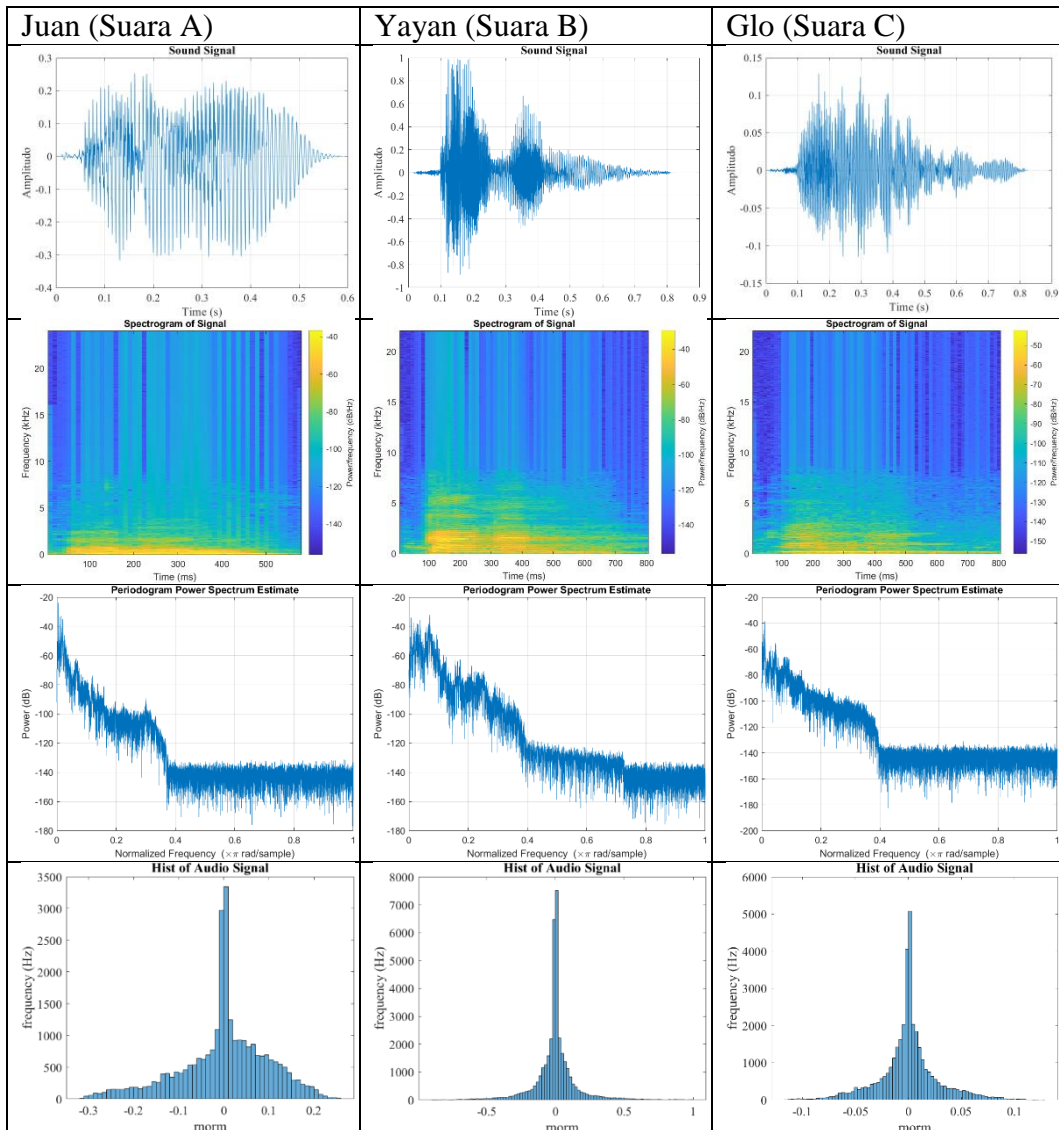
Berhenti 40 cm



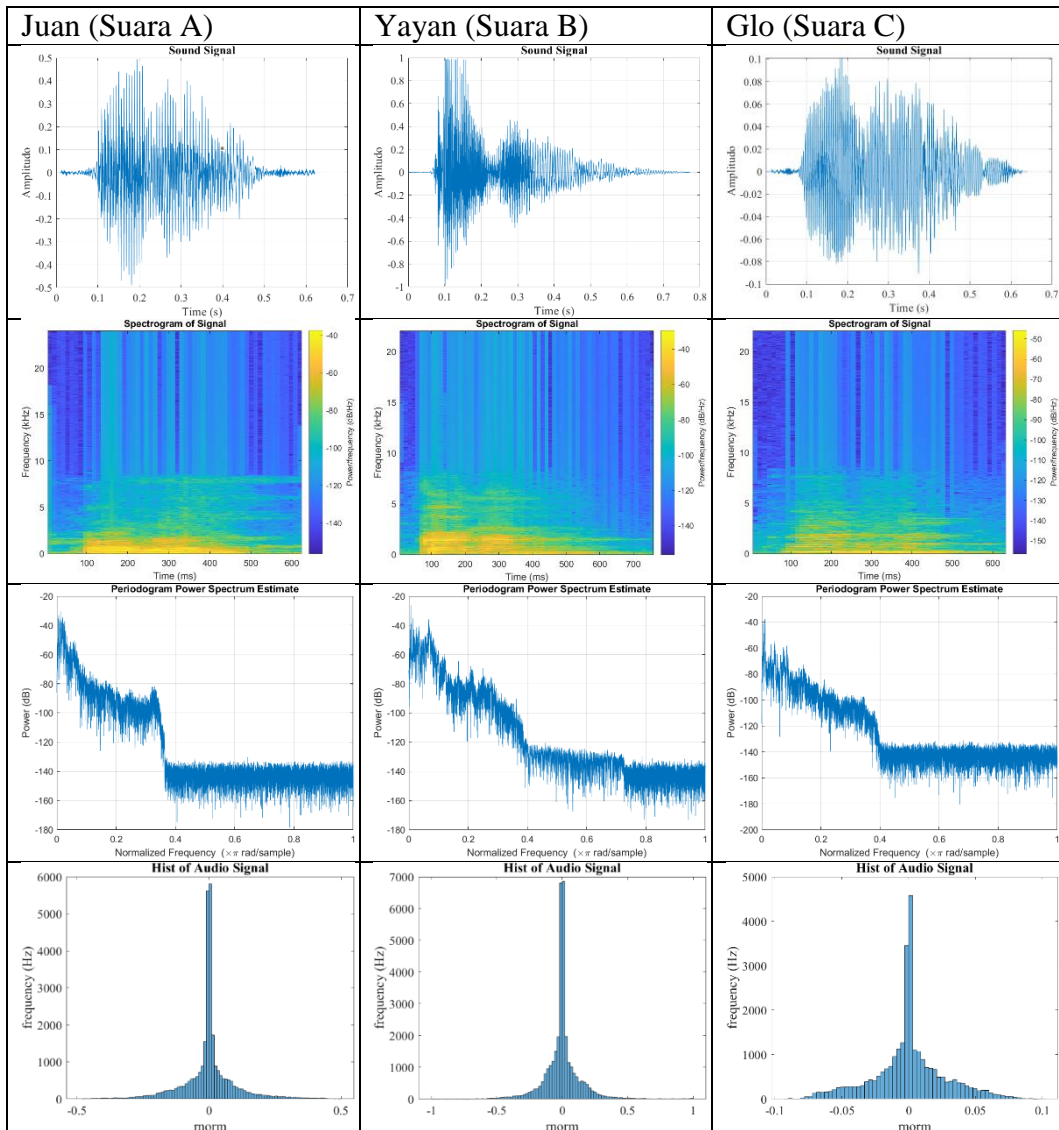
Berhenti 50 cm



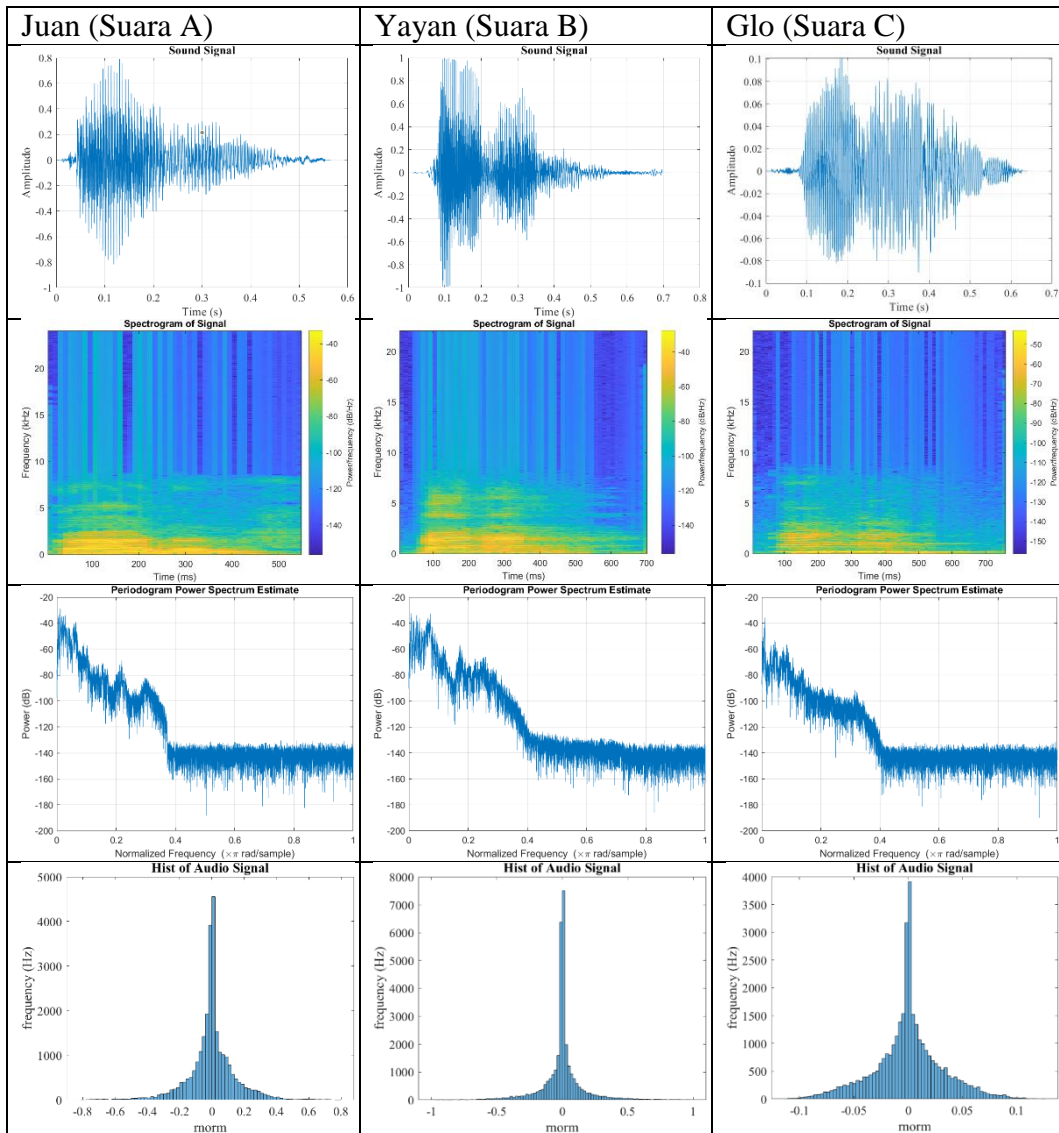
# Kanan 10 cm



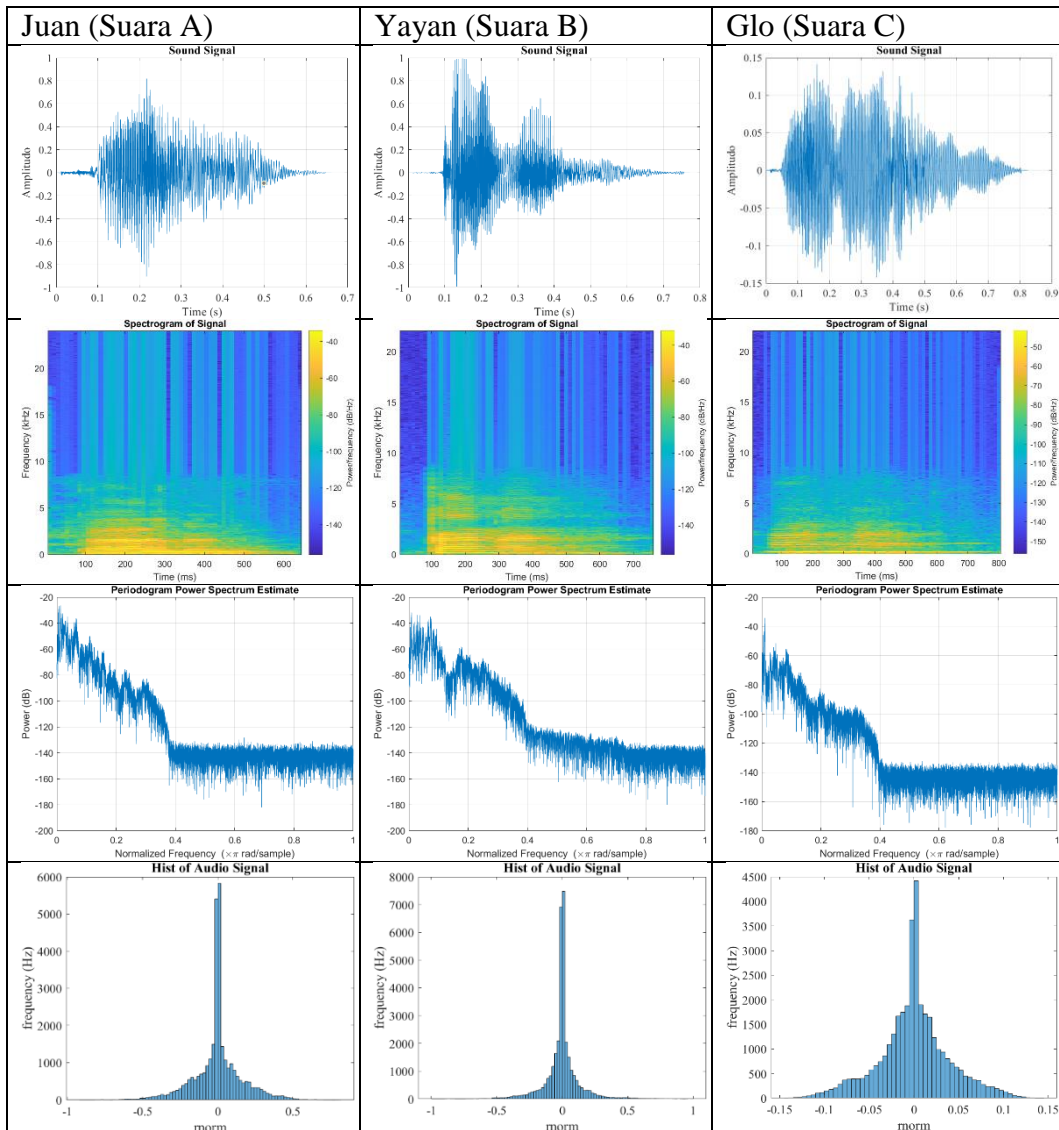
# Kanan 20 cm



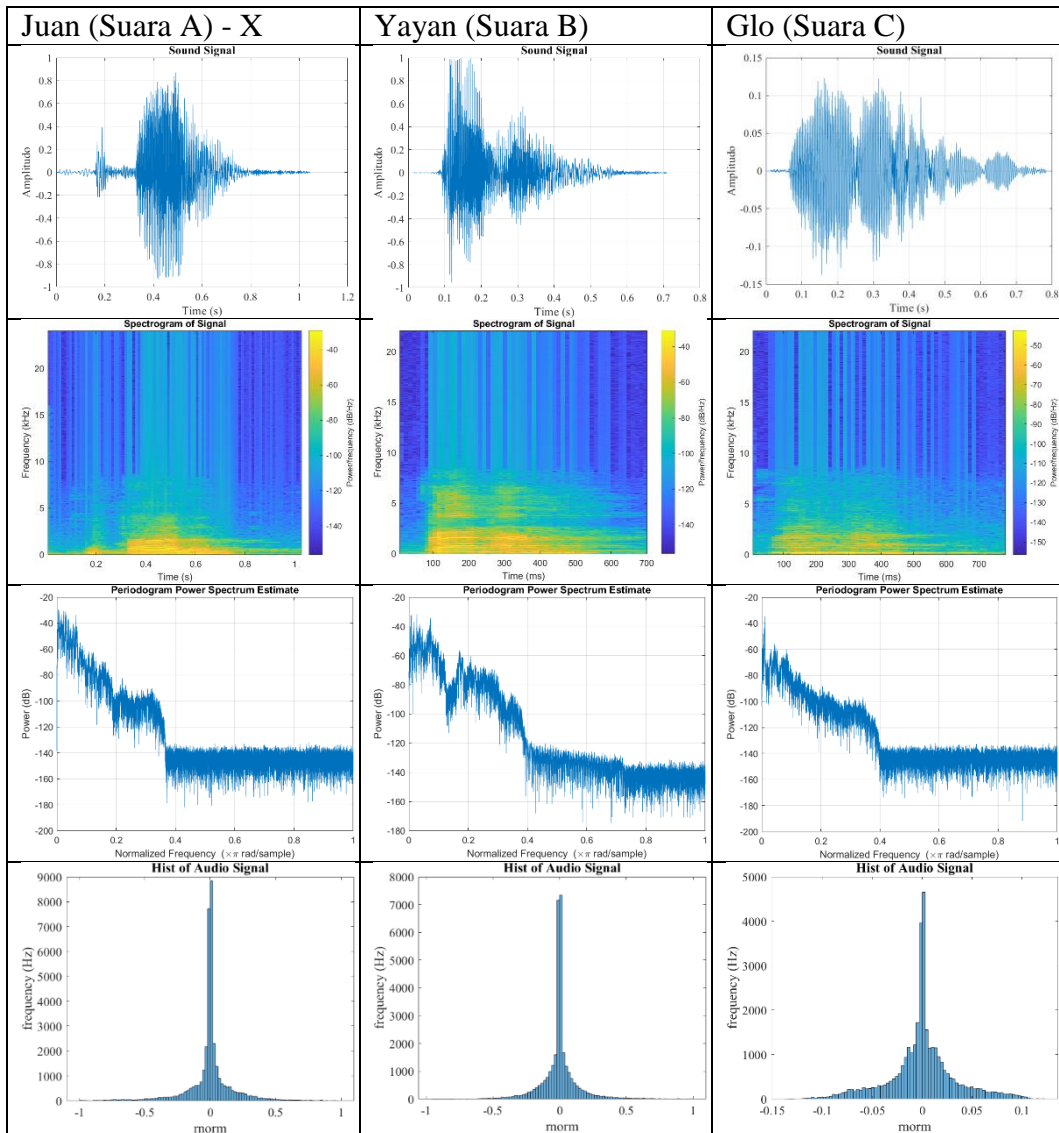
# Kanan 30 cm



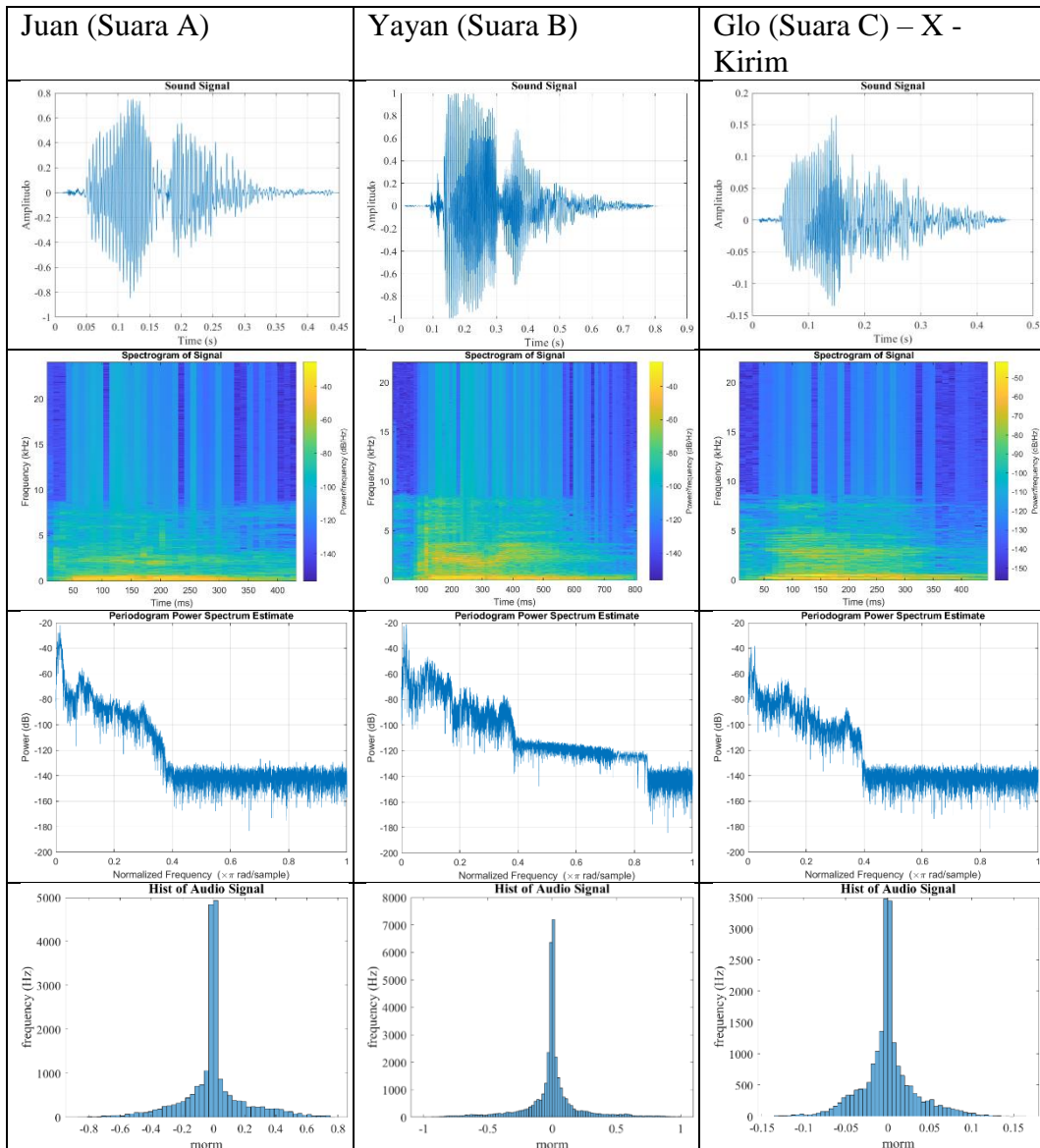
# Kanan 40 cm



# Kanan 50 cm

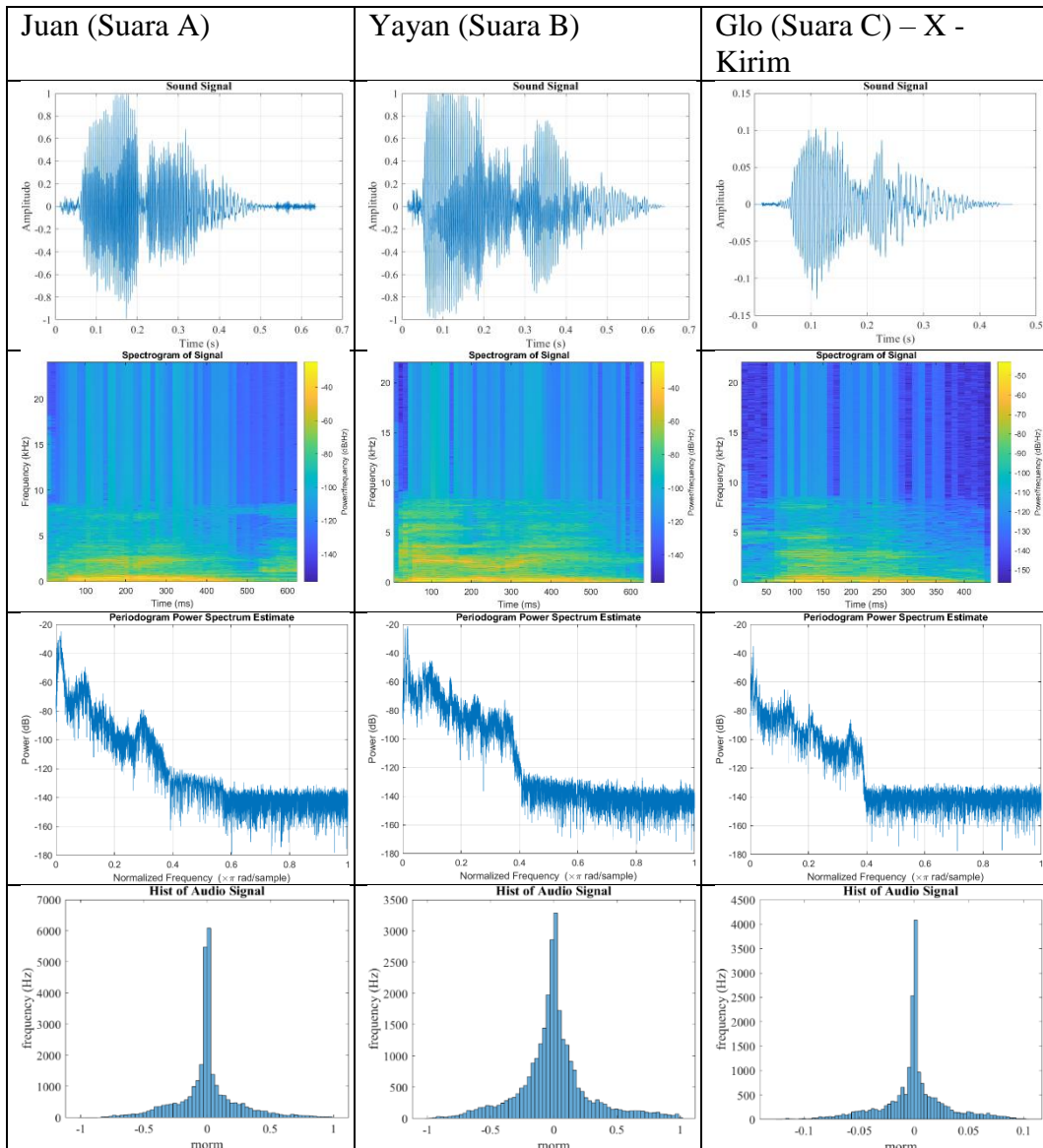


Kiri 10 cm

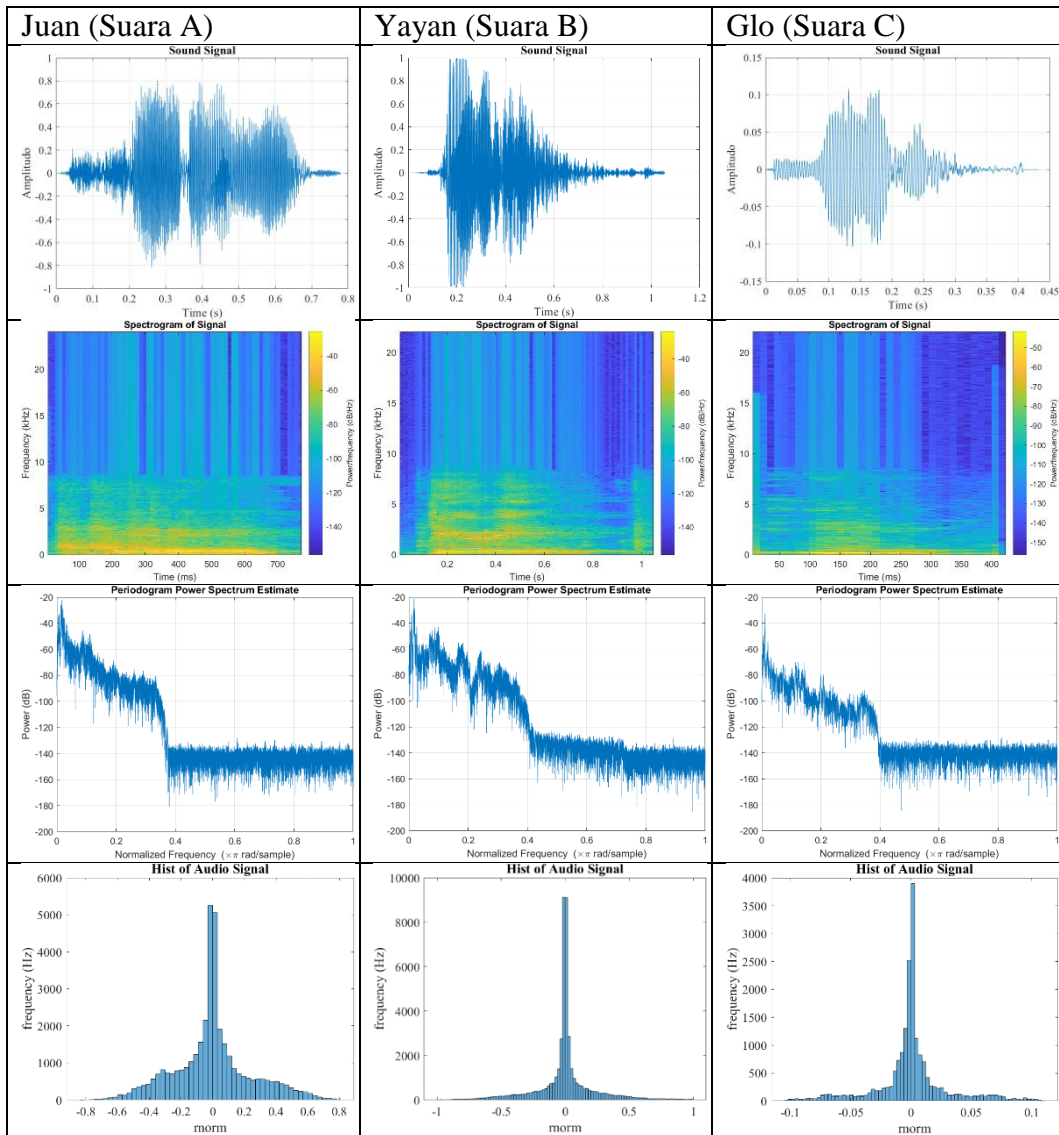




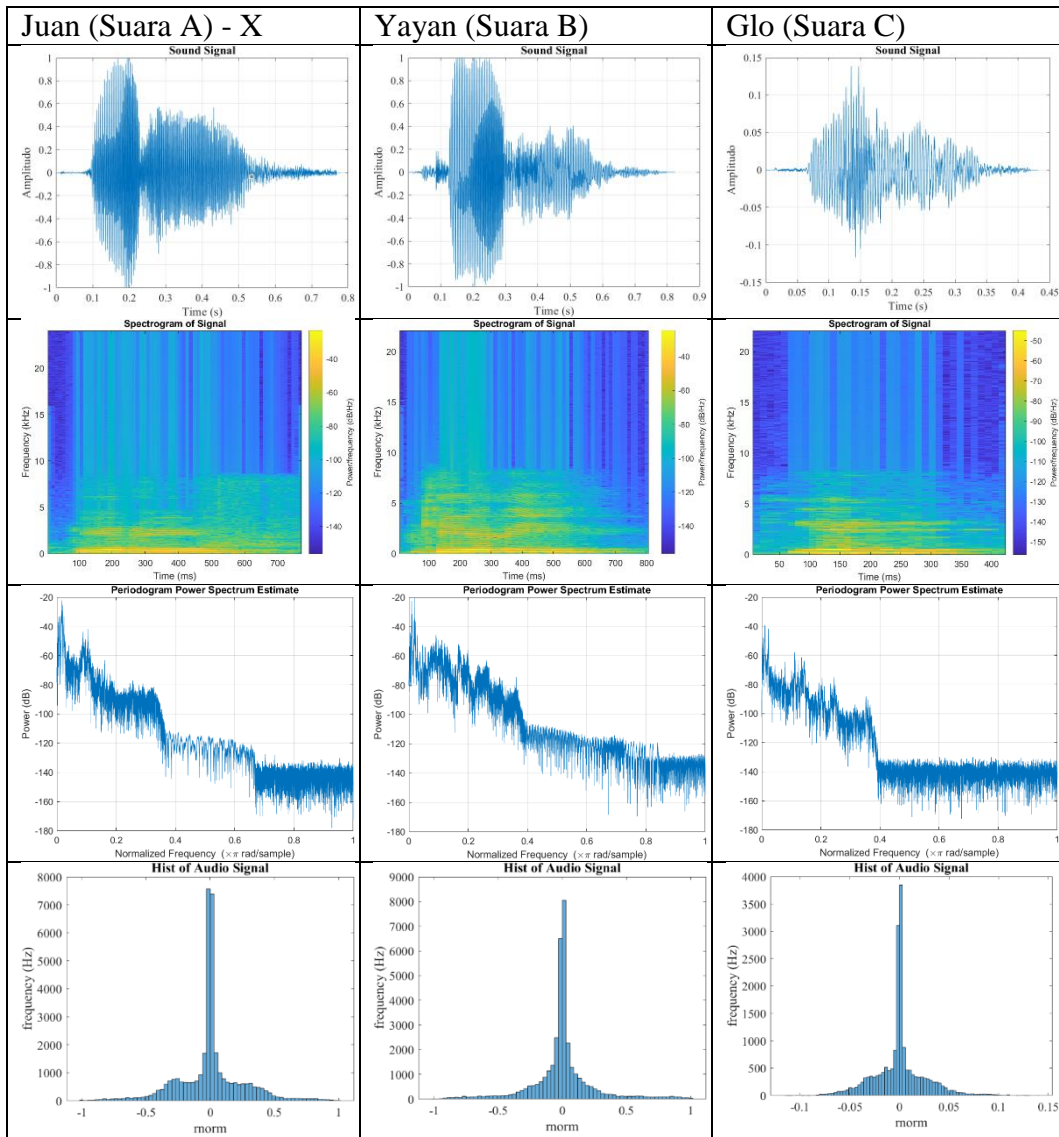
# Kiri 20 cm



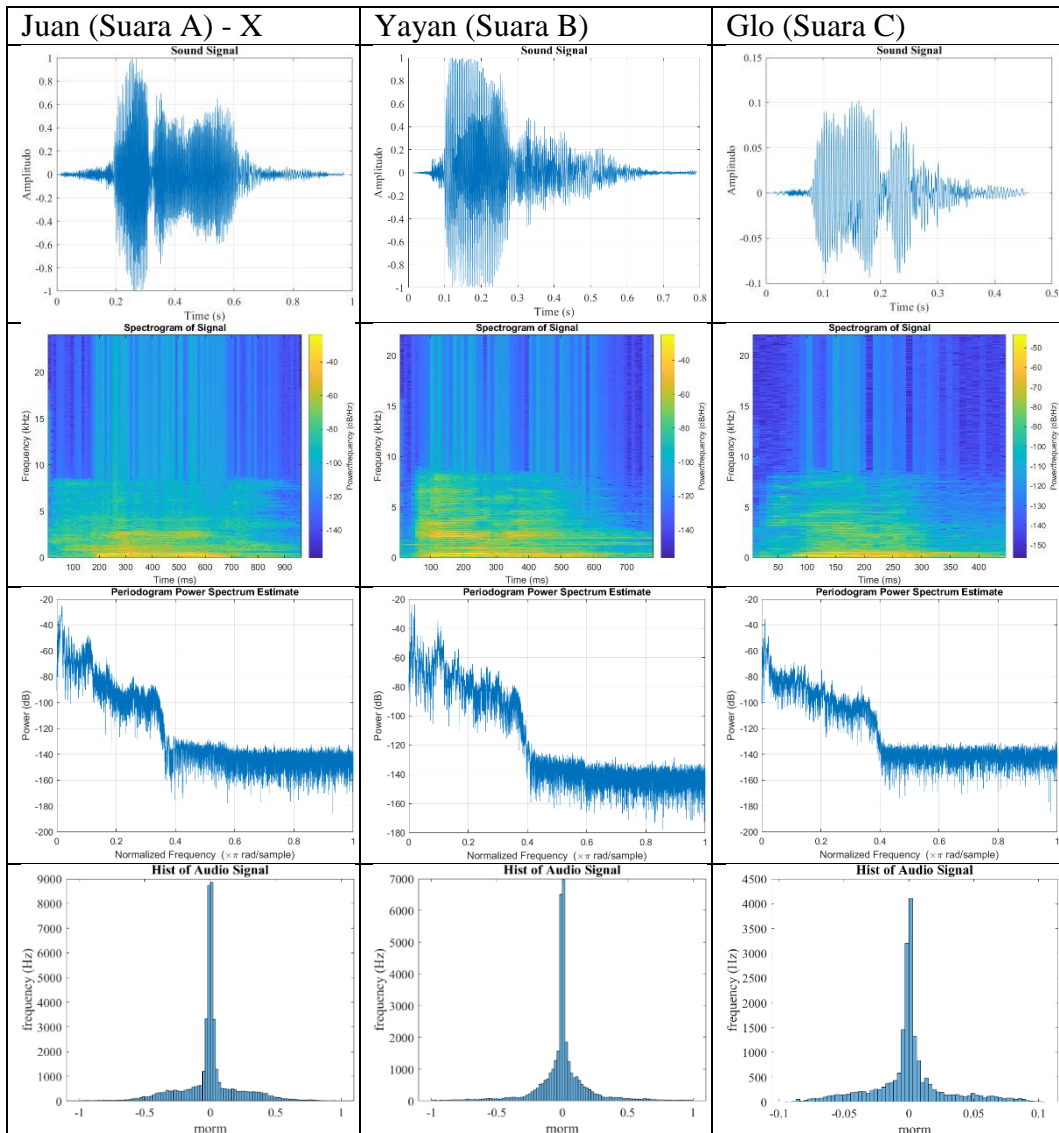
Kiri 30 cm



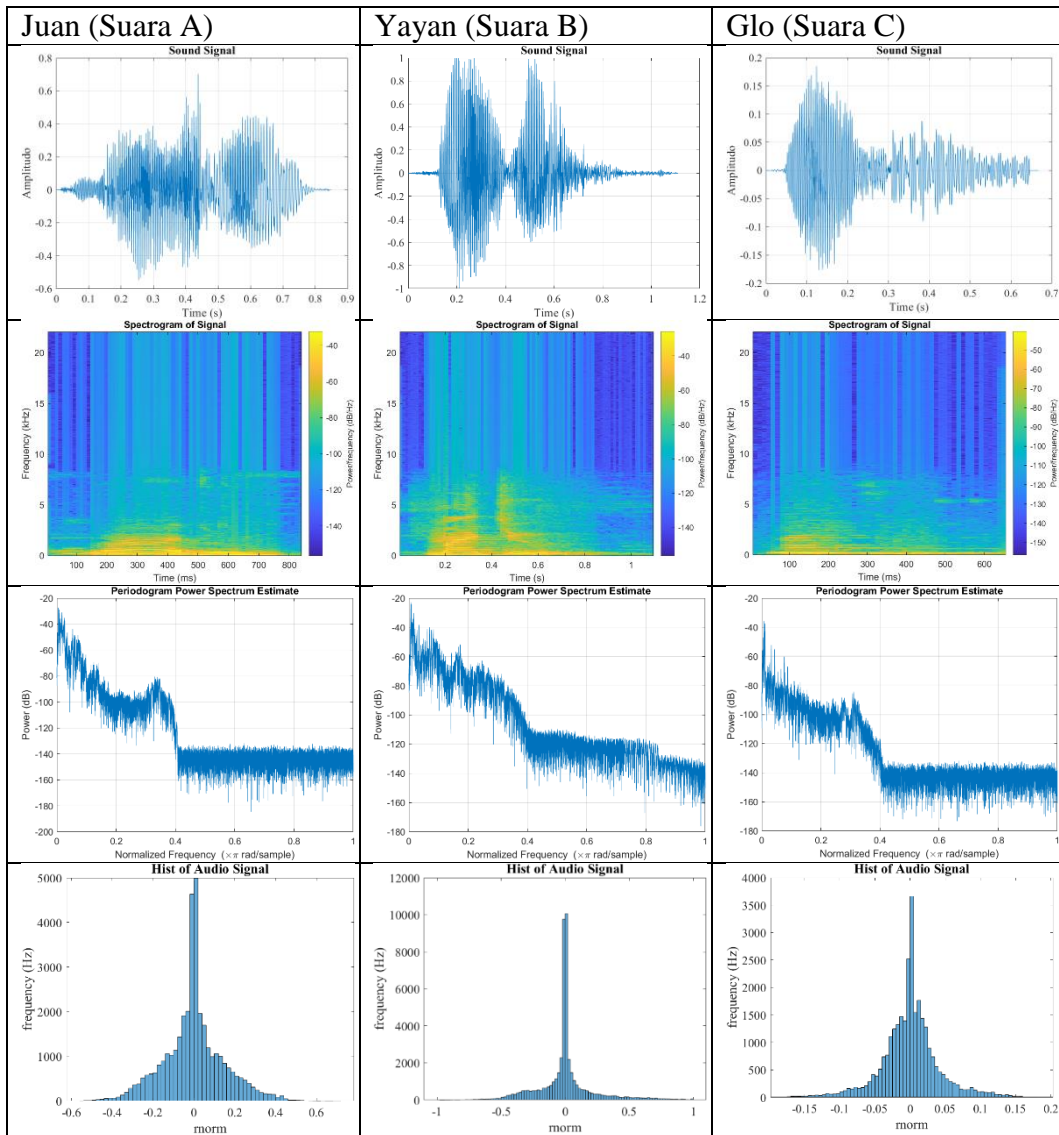
Kiri 40 cm



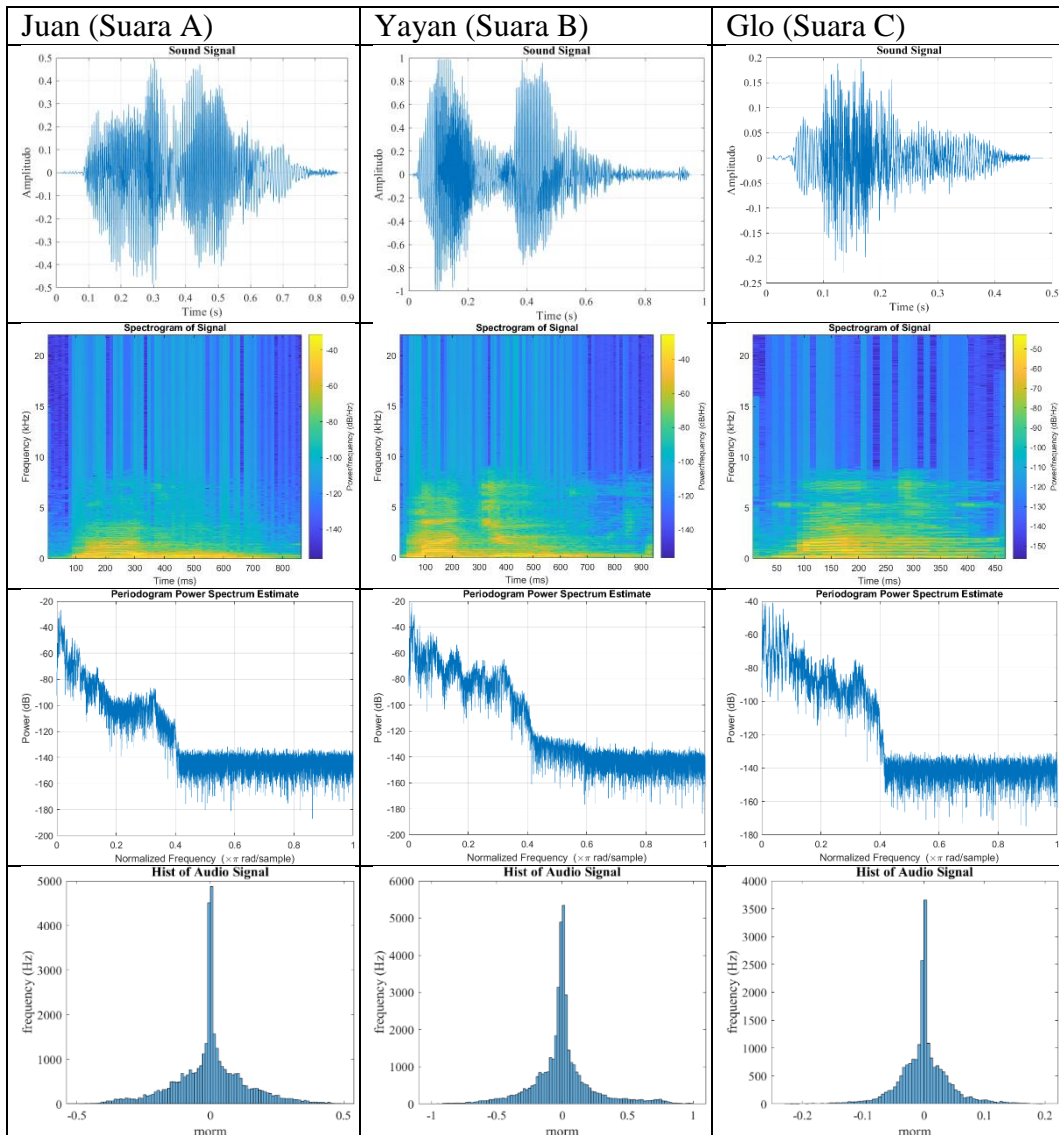
Kiri 50 cm



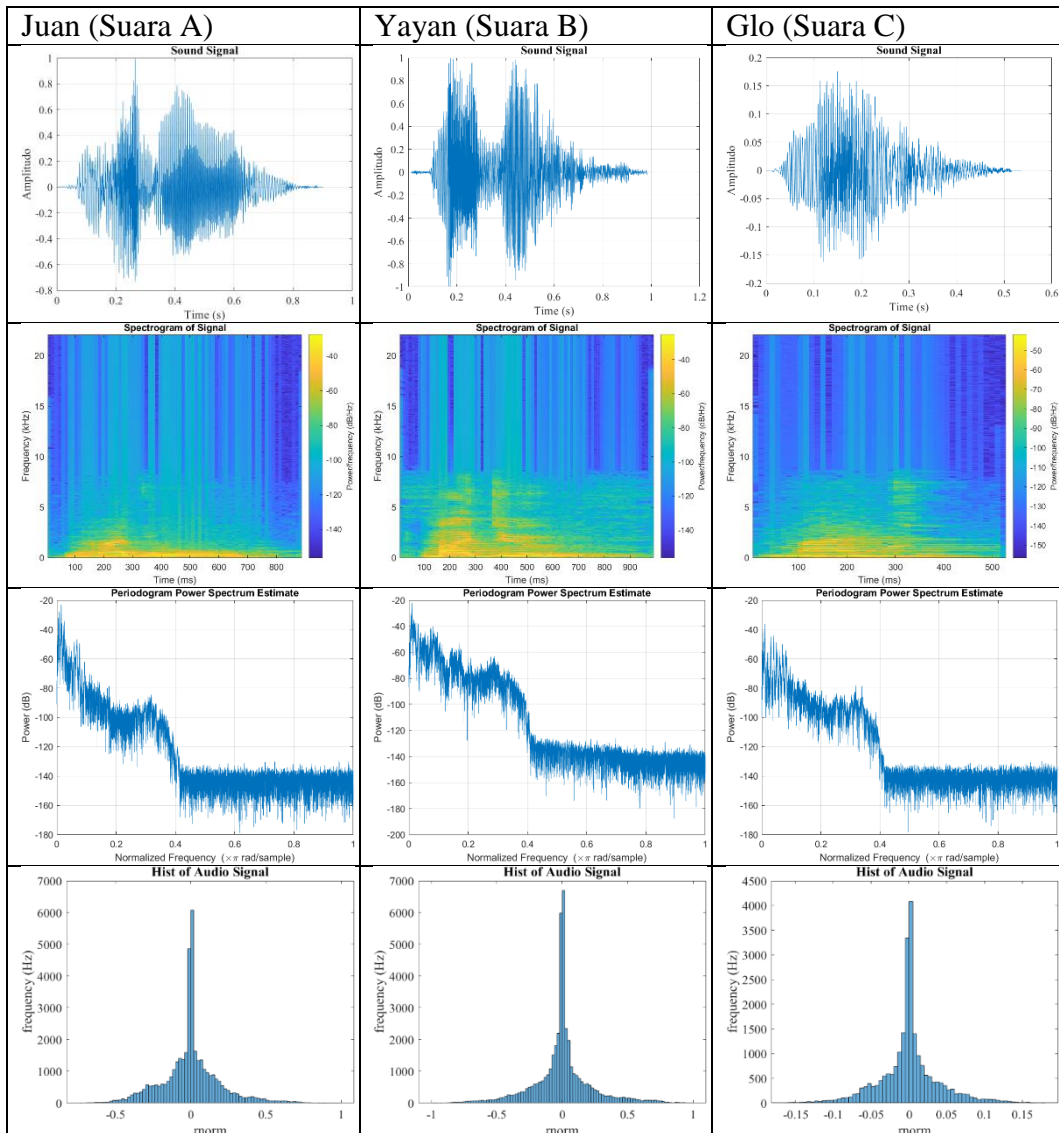
Maju 10 cm



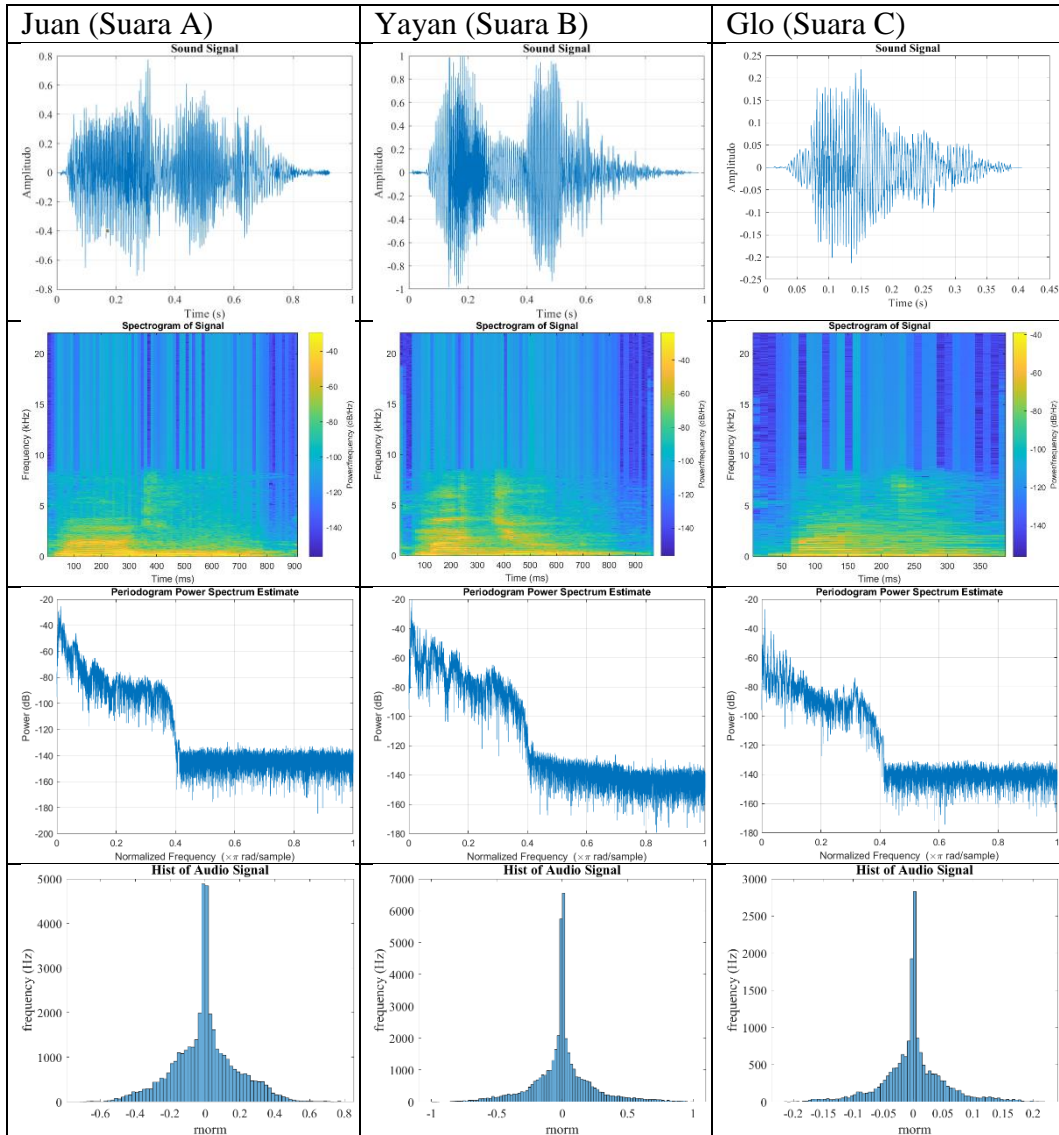
Maju 20 cm



Maju 30 cm

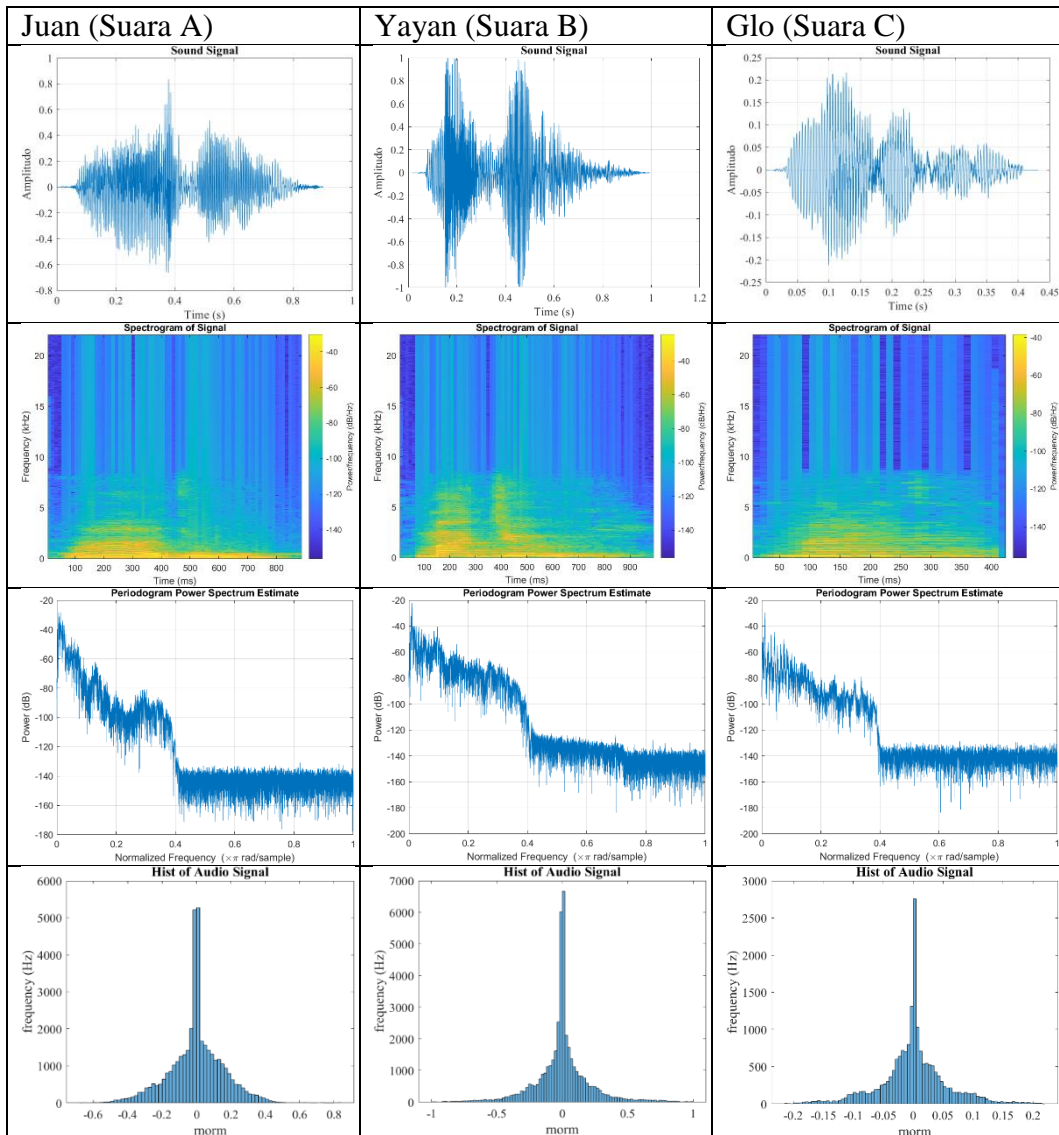


Maju 40 cm

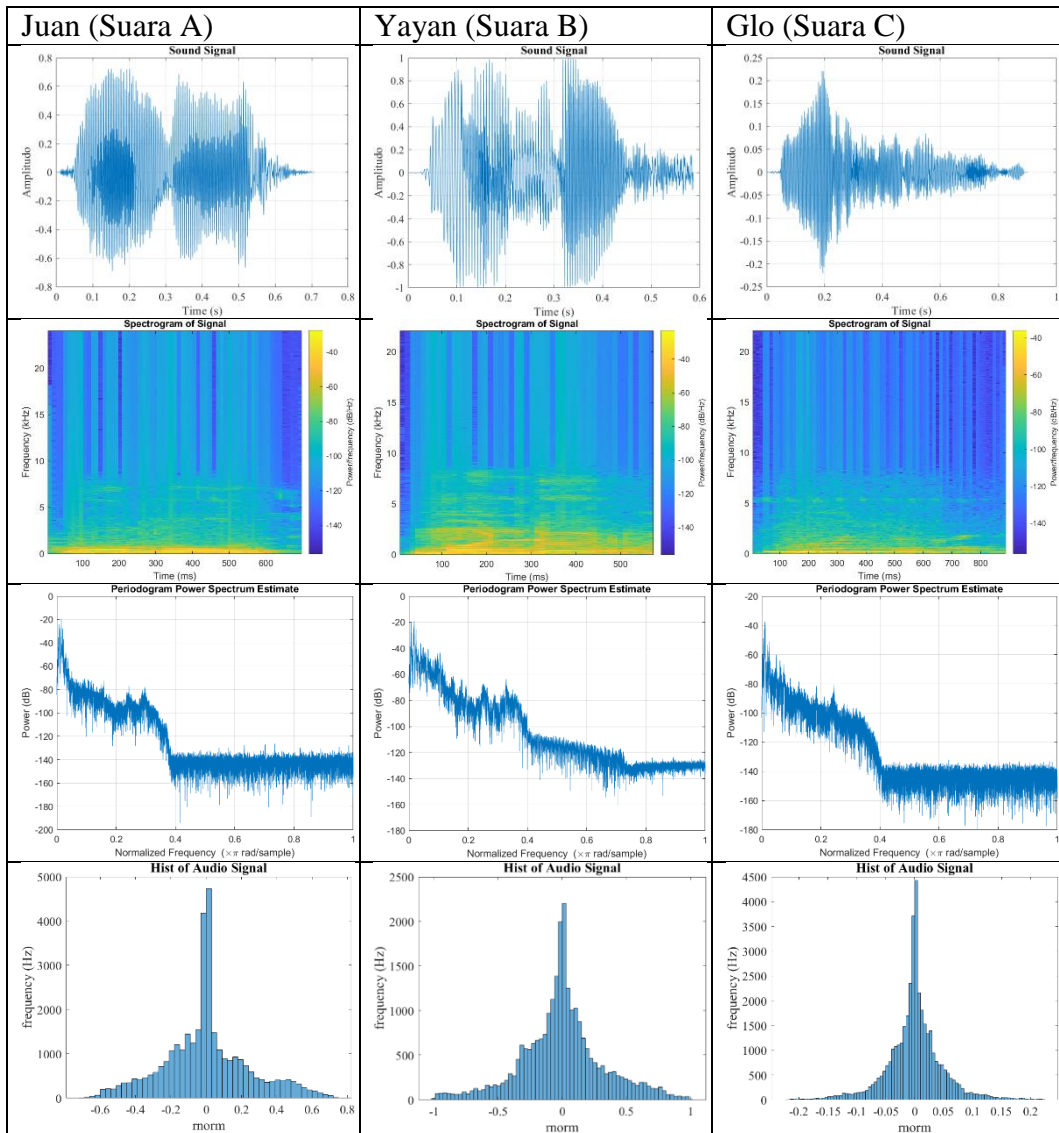




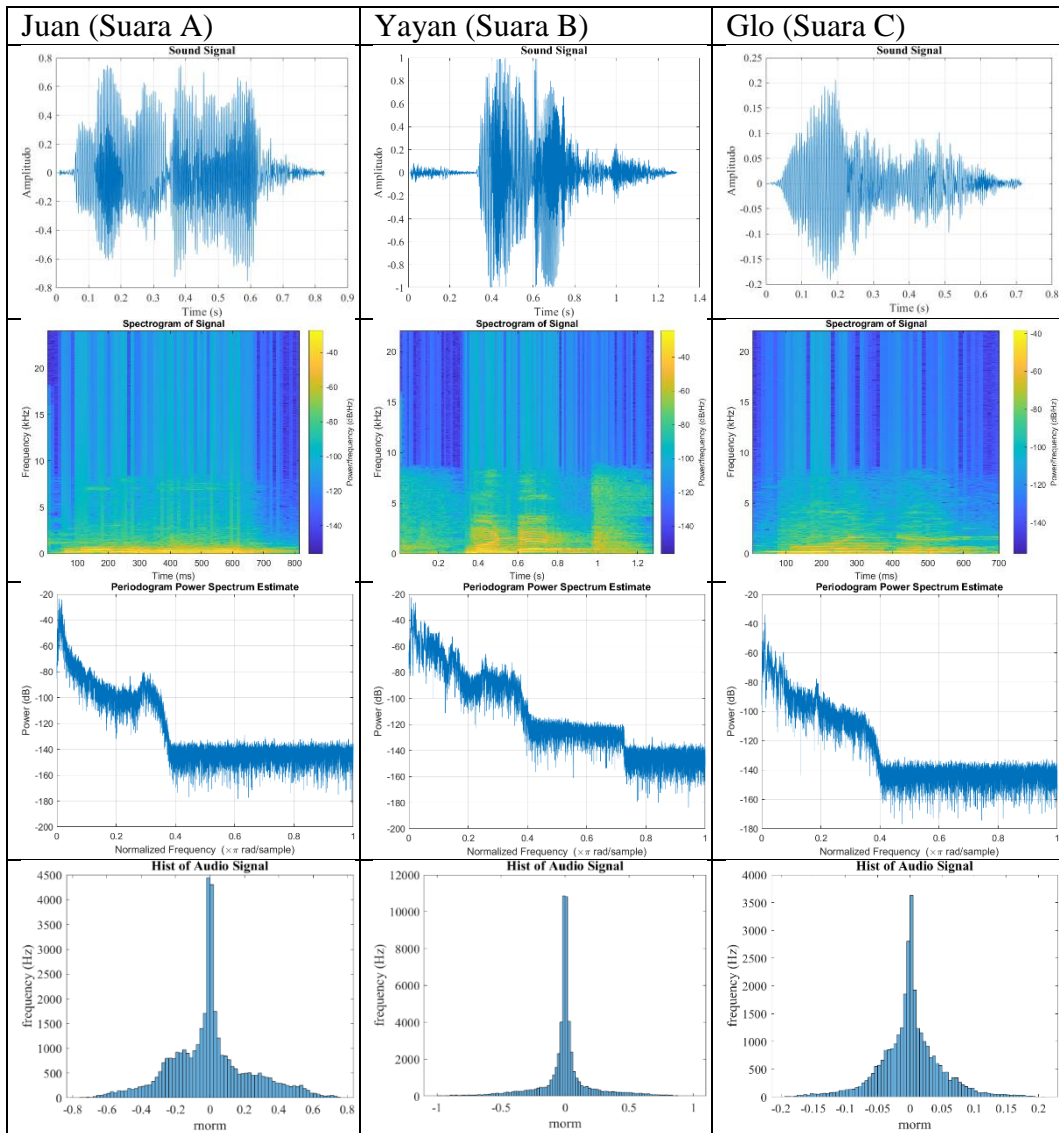
Maju 50 cm



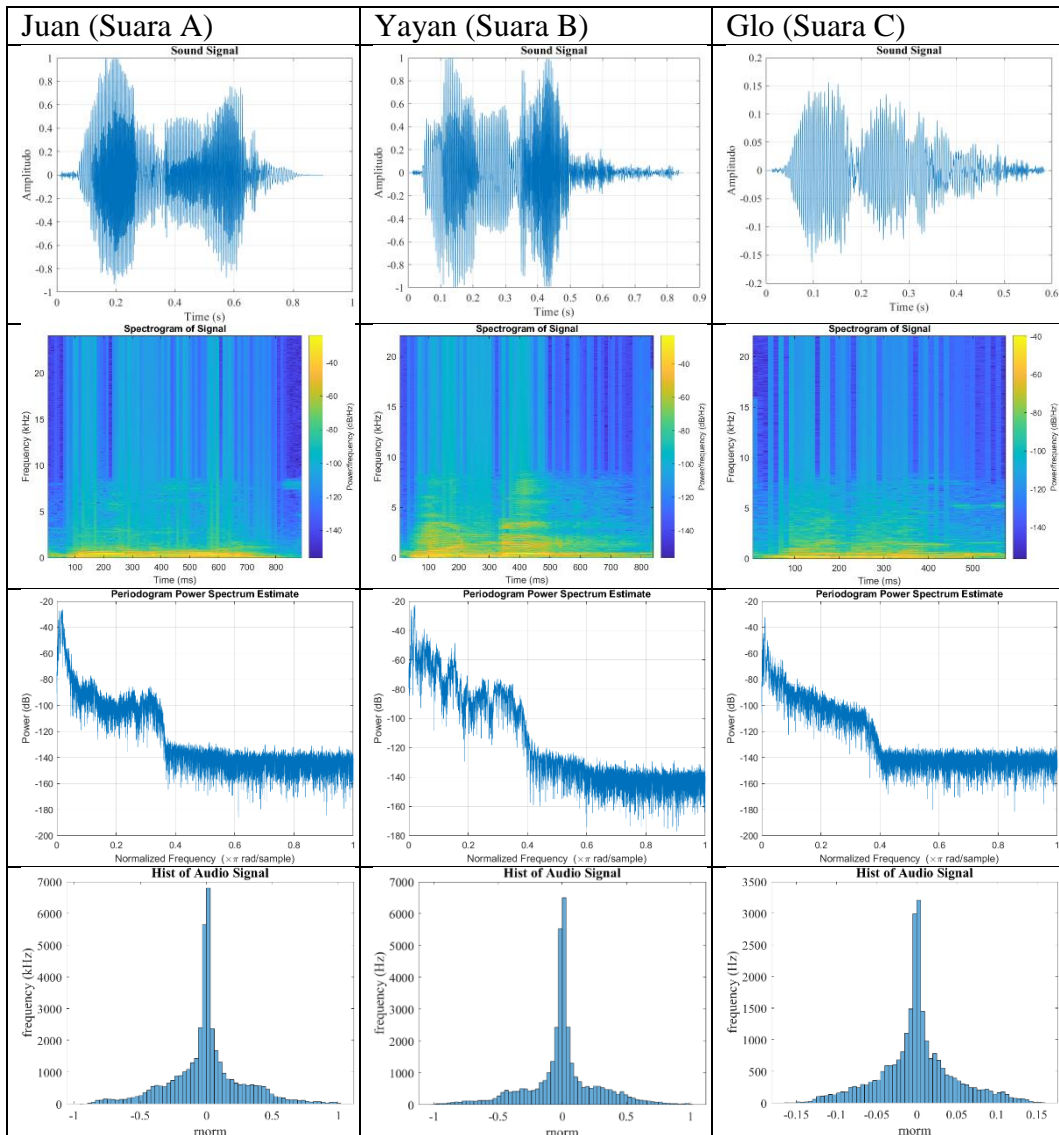
# Mundur 10 cm



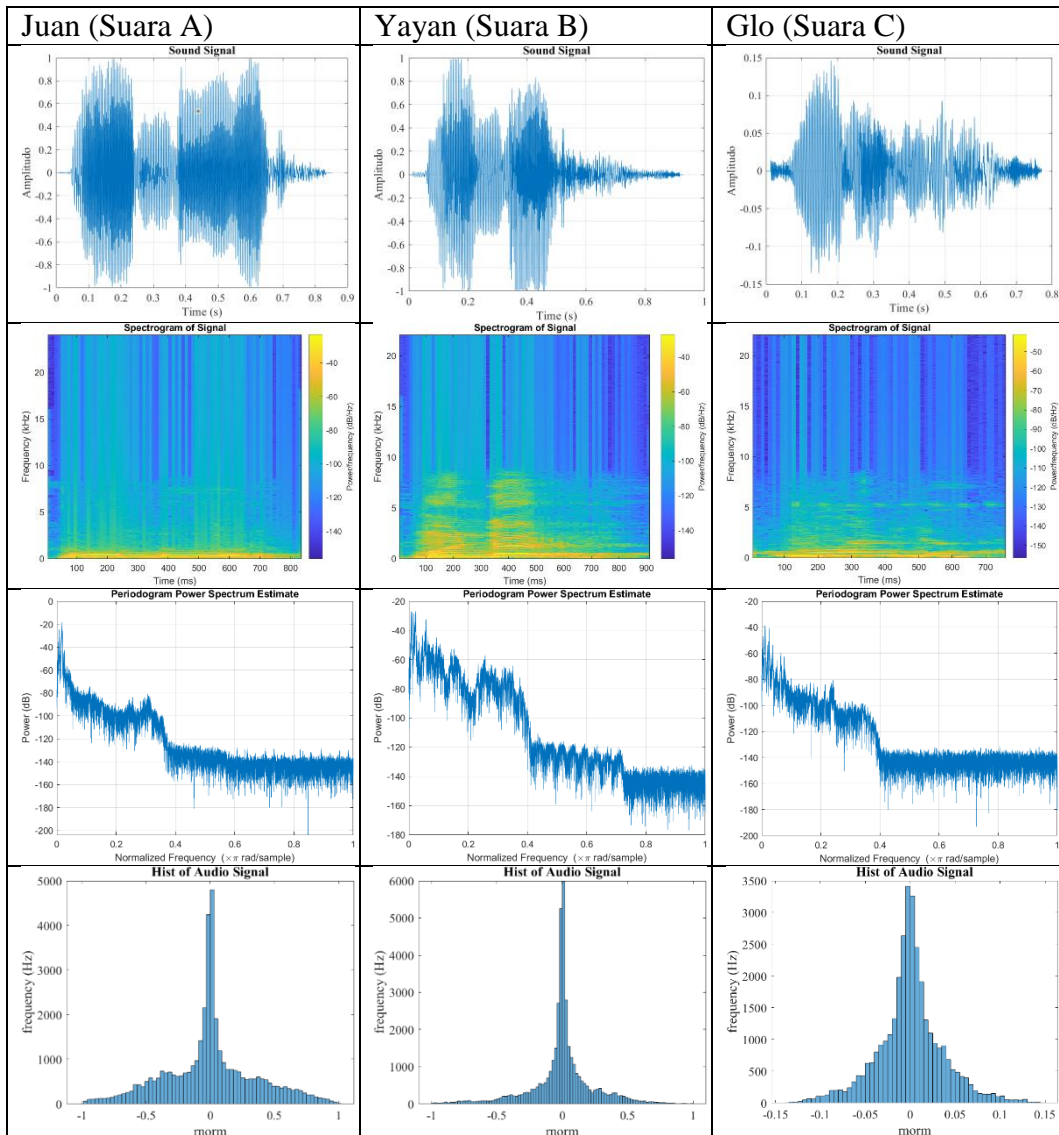
# Mundur 20 cm



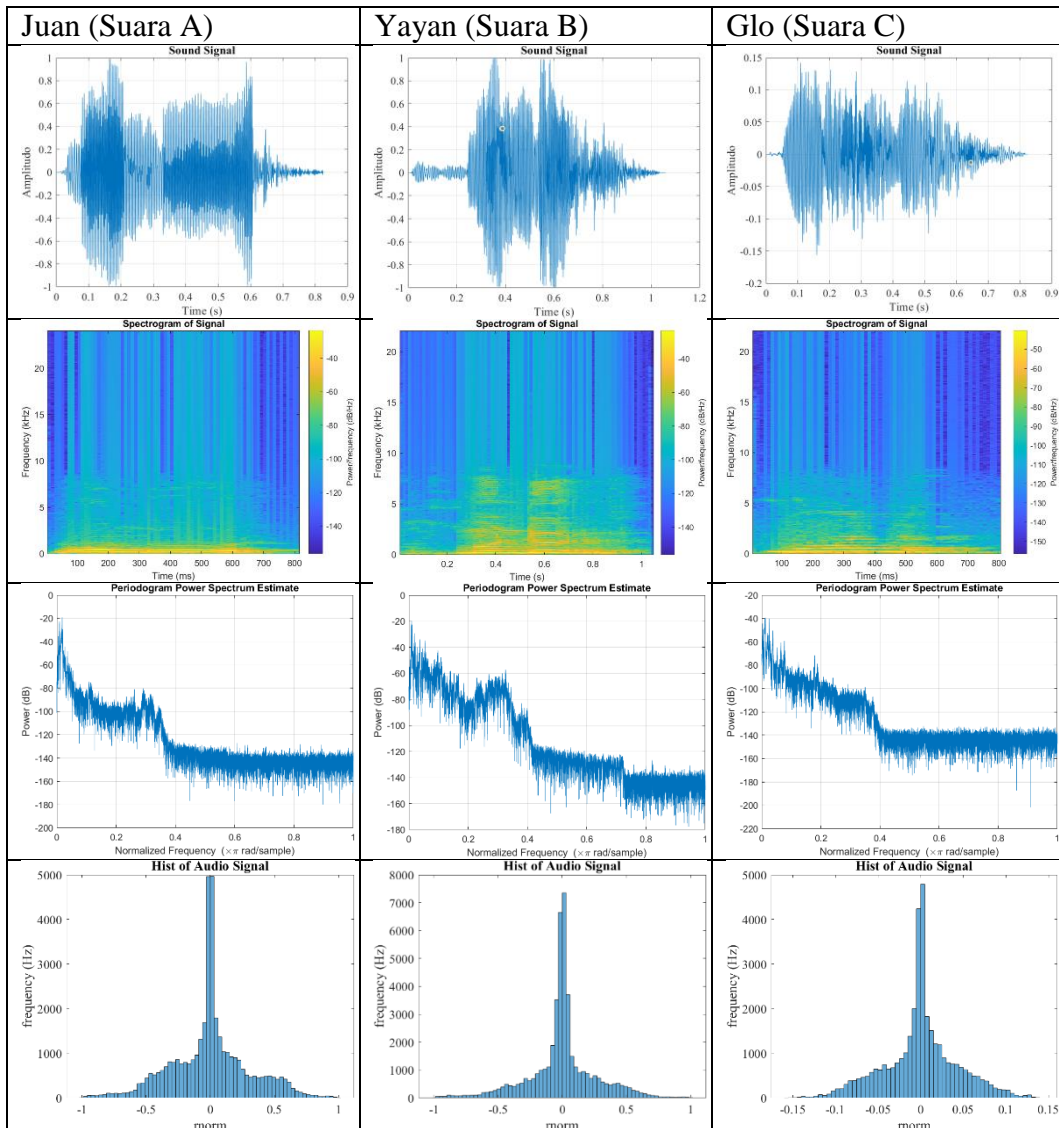
Mundur 30 cm



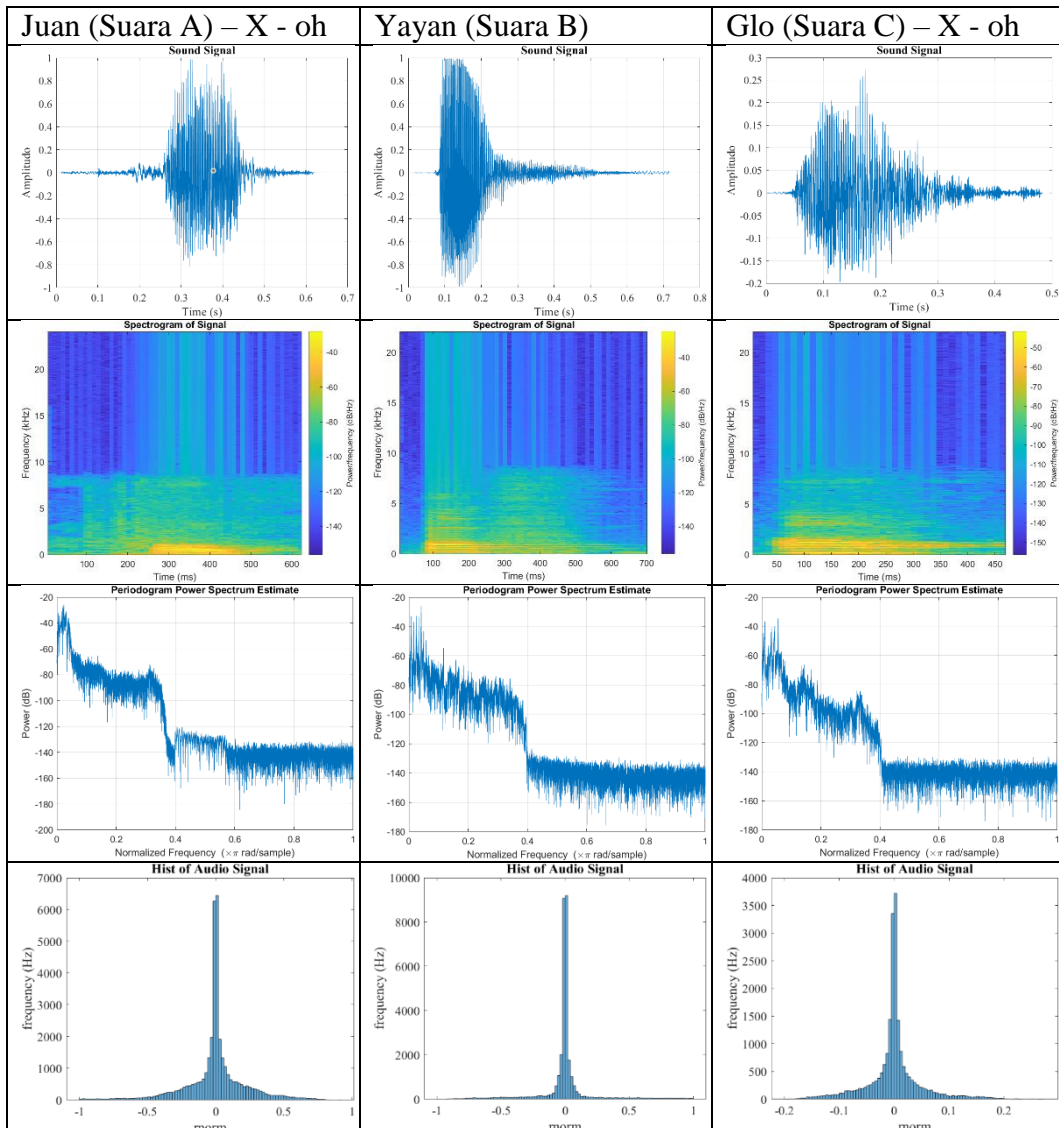
# Mundur 40 cm



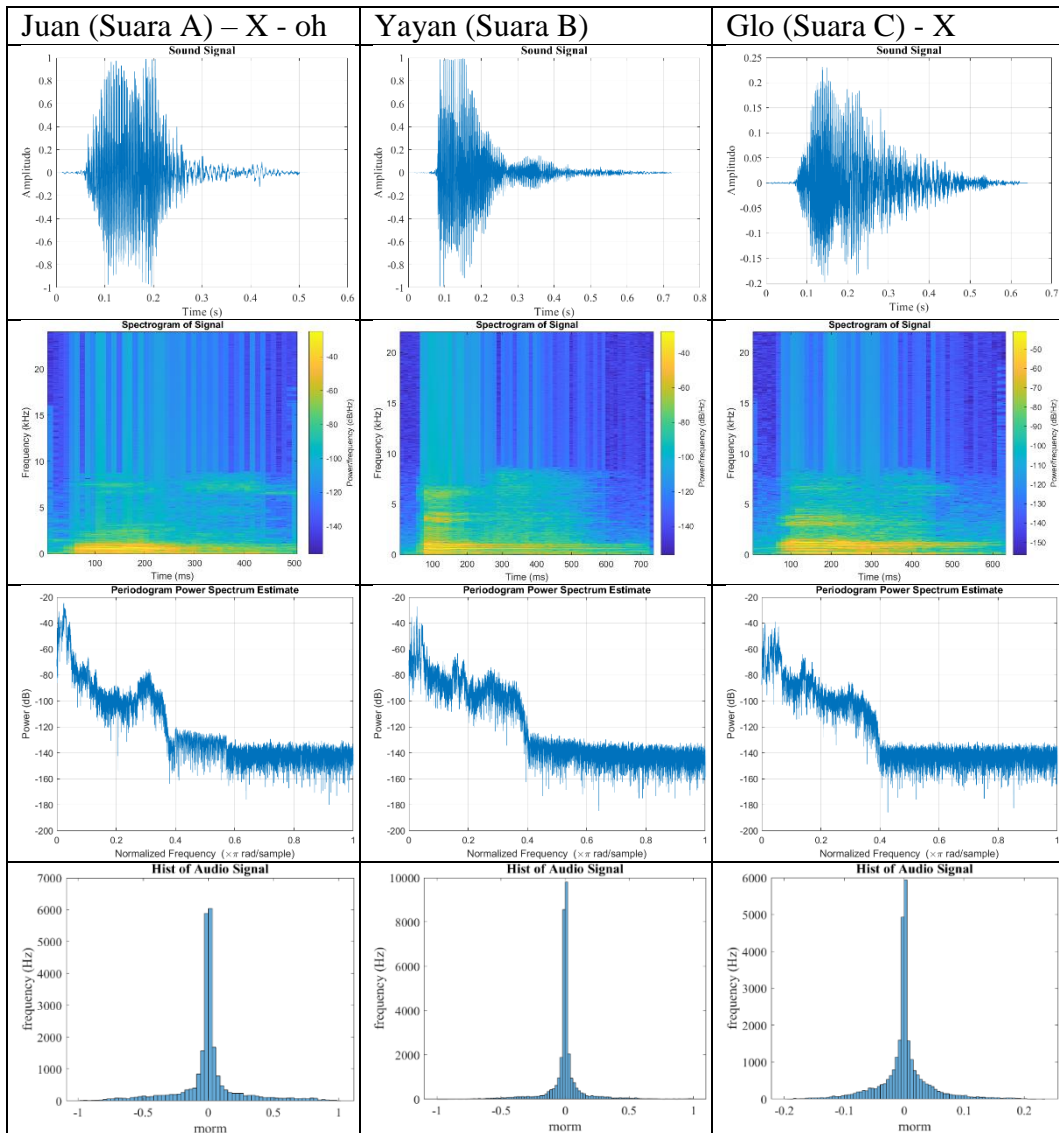
# Mundur 50 cm



Off 10 cm

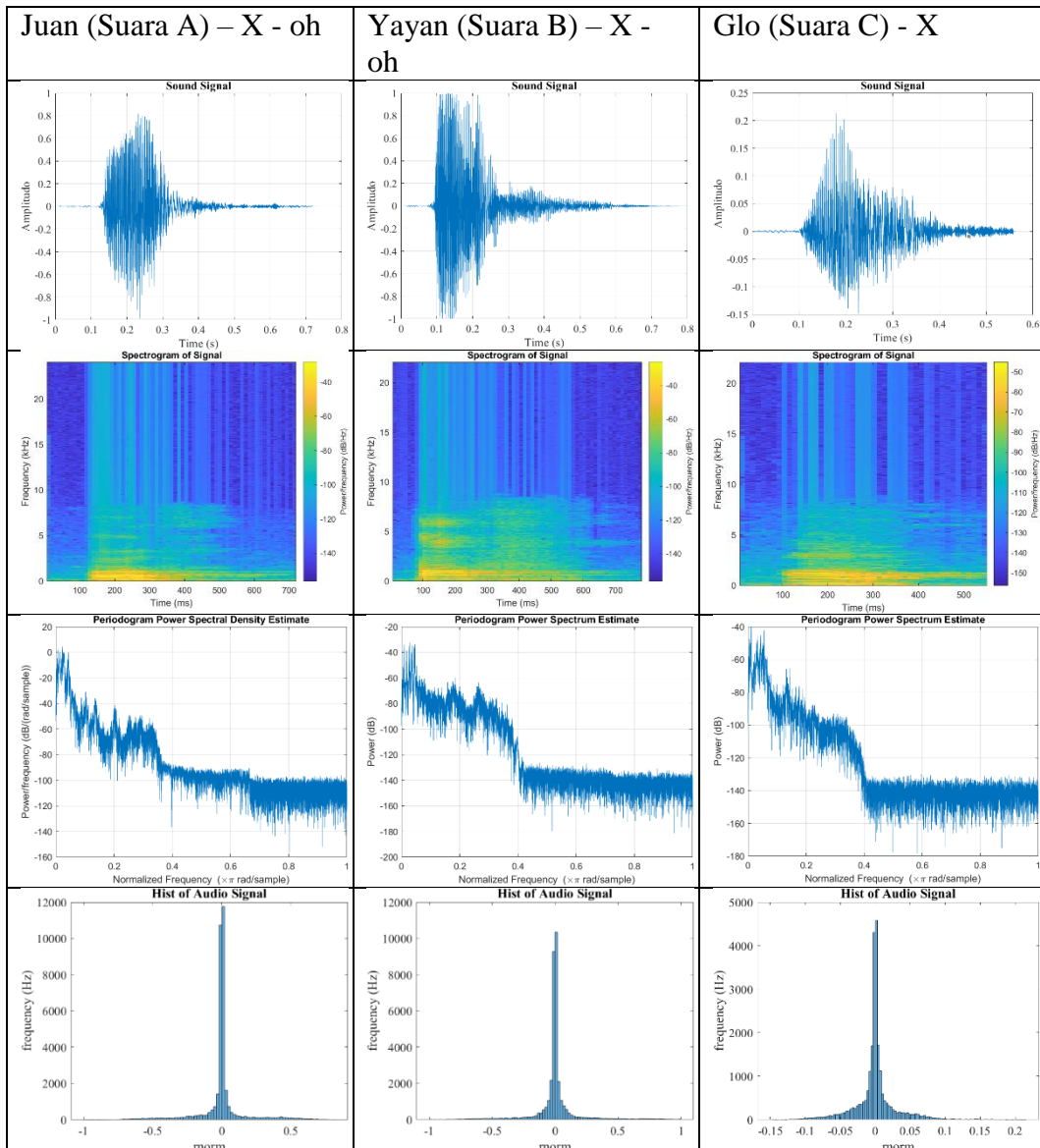


Off 20 cm

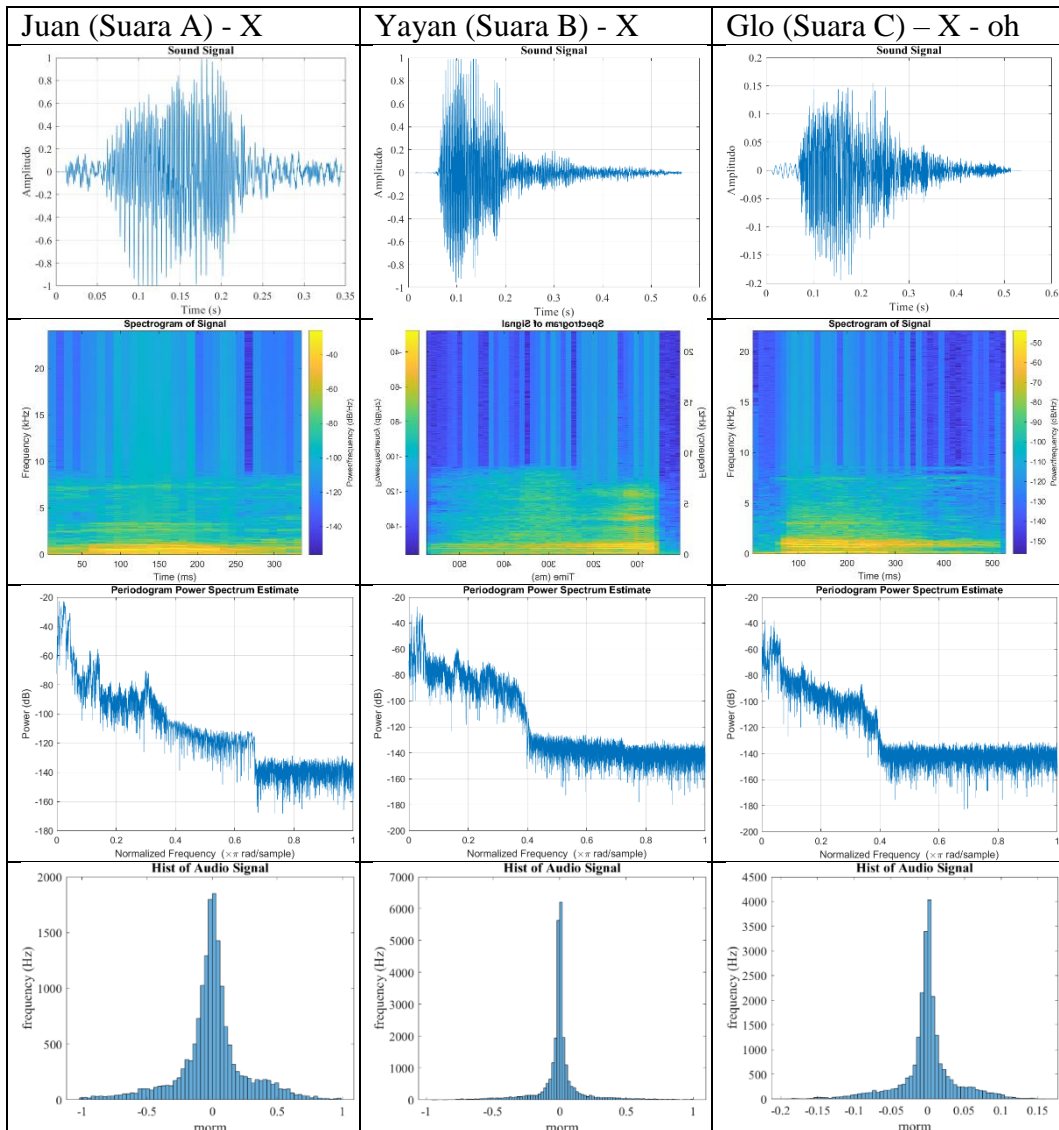




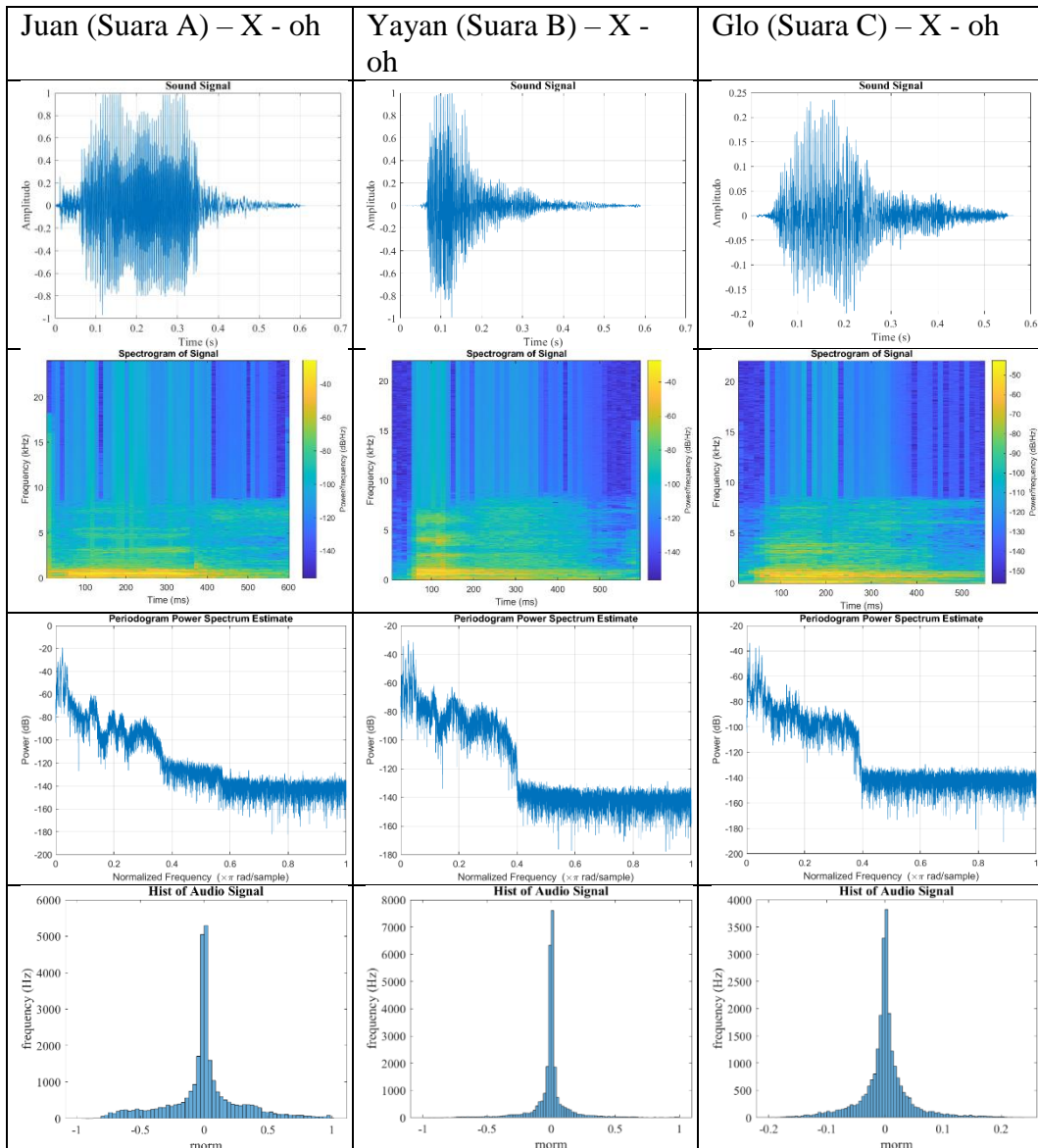
Off 30 cm



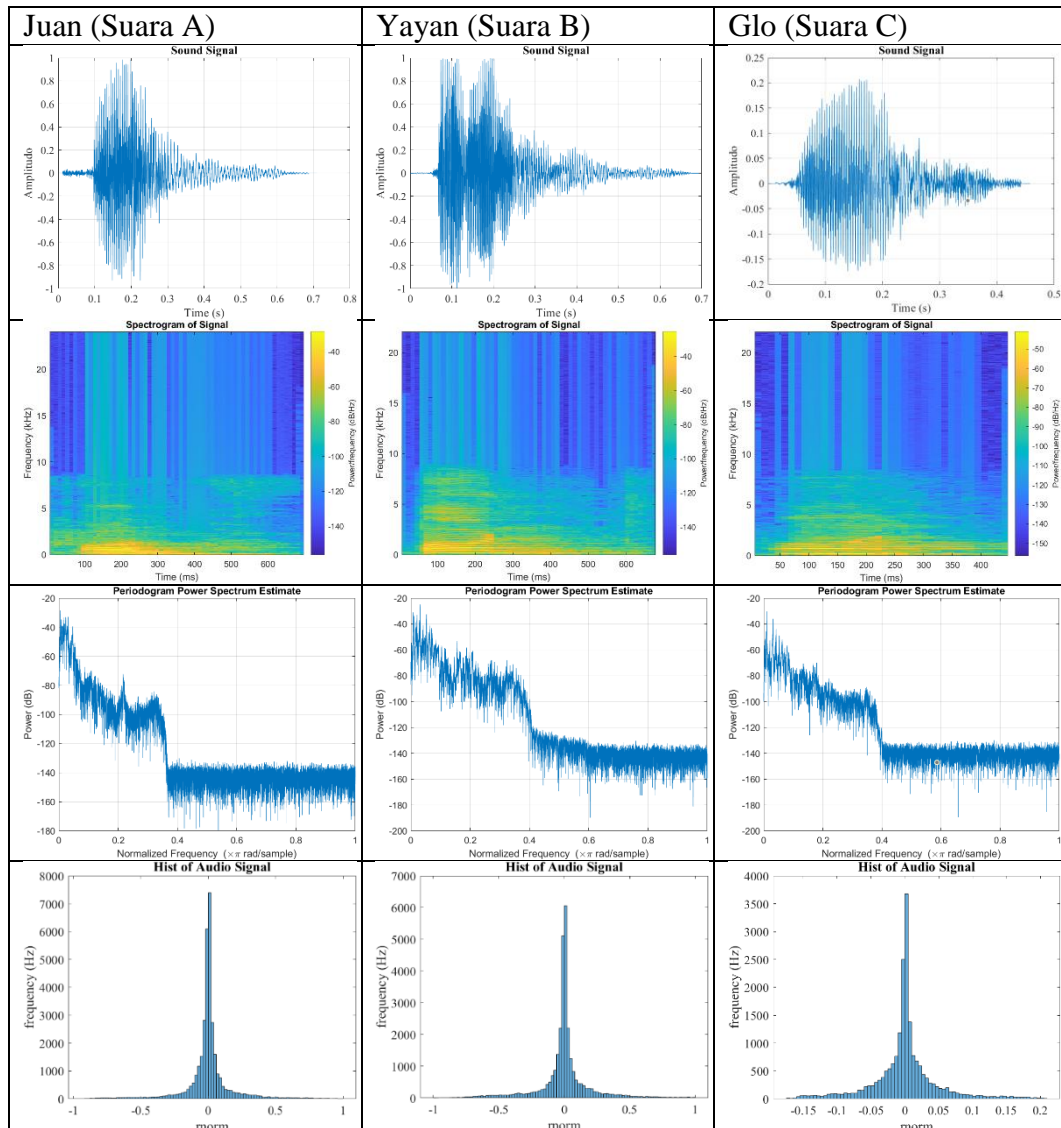
Off 40 cm



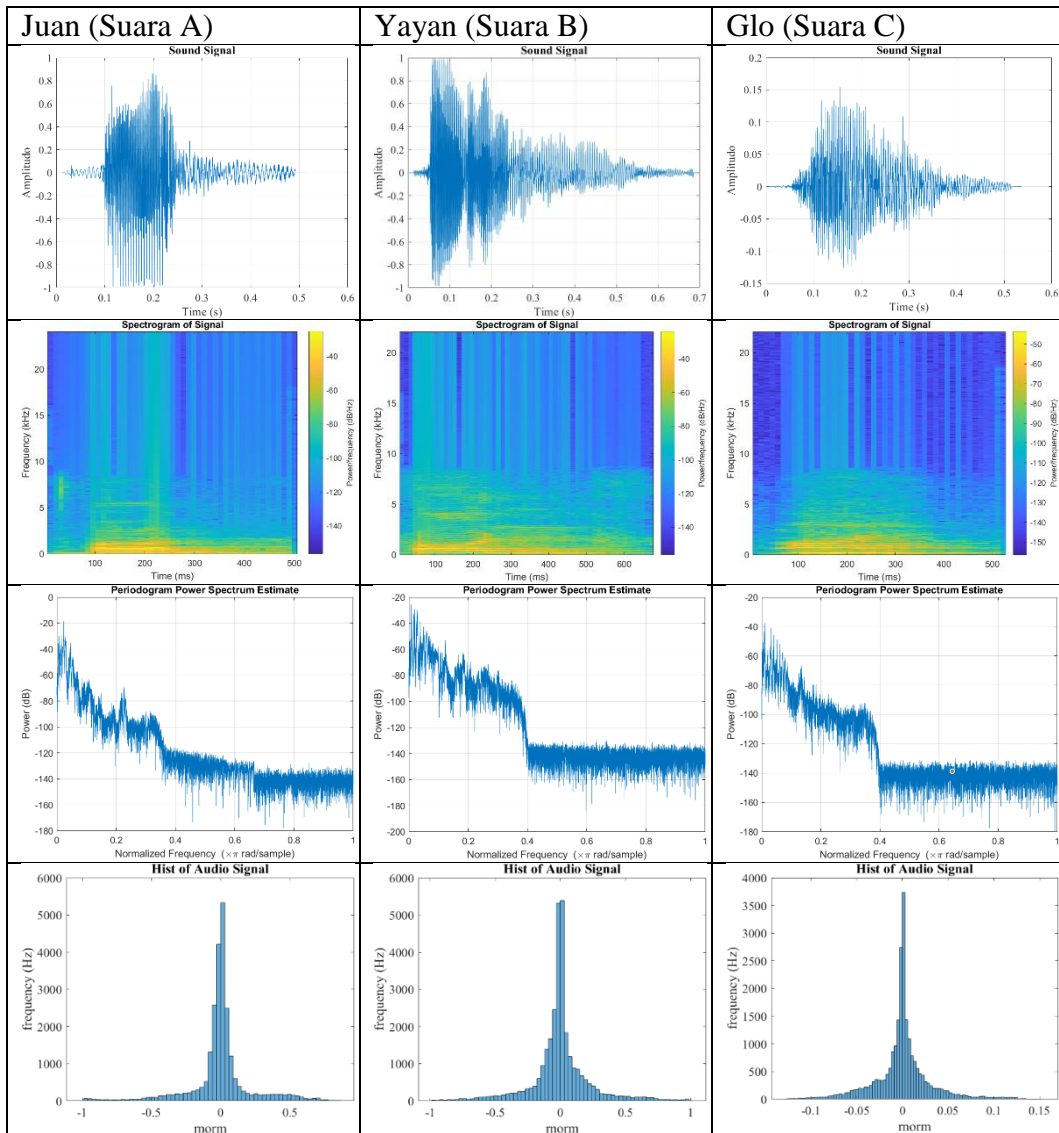
Off 50 cm



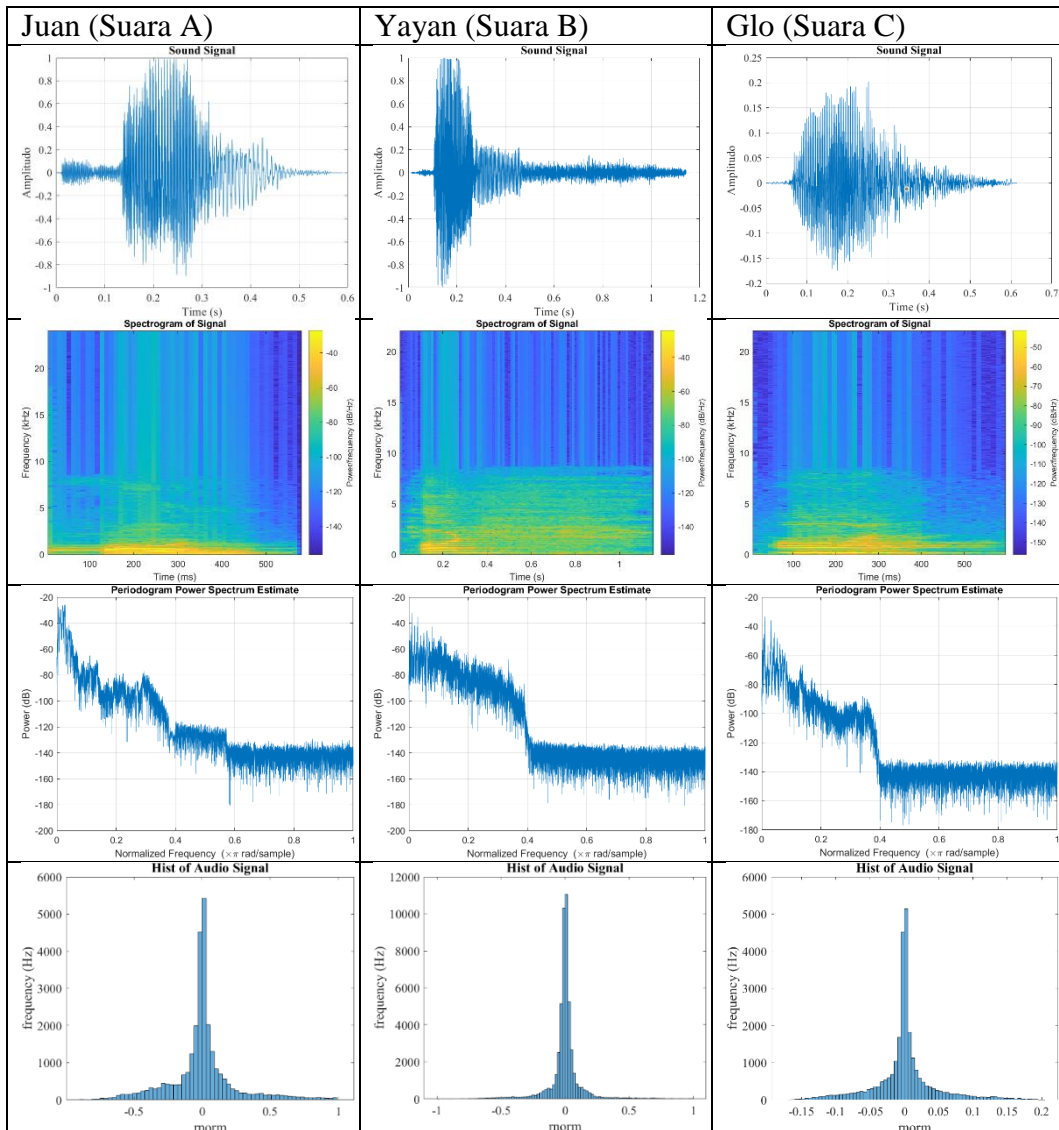
On 10 cm



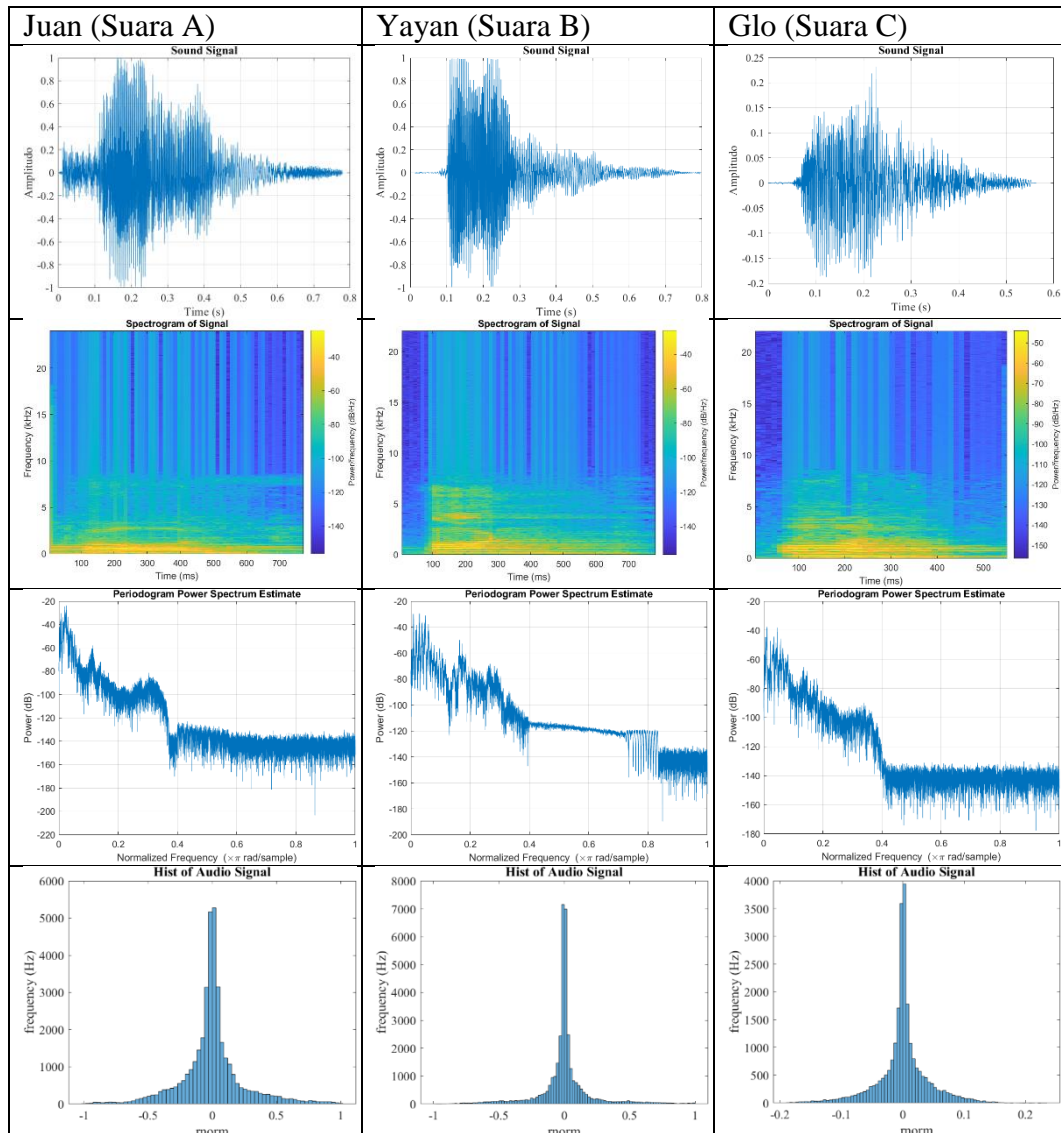
On 20 cm



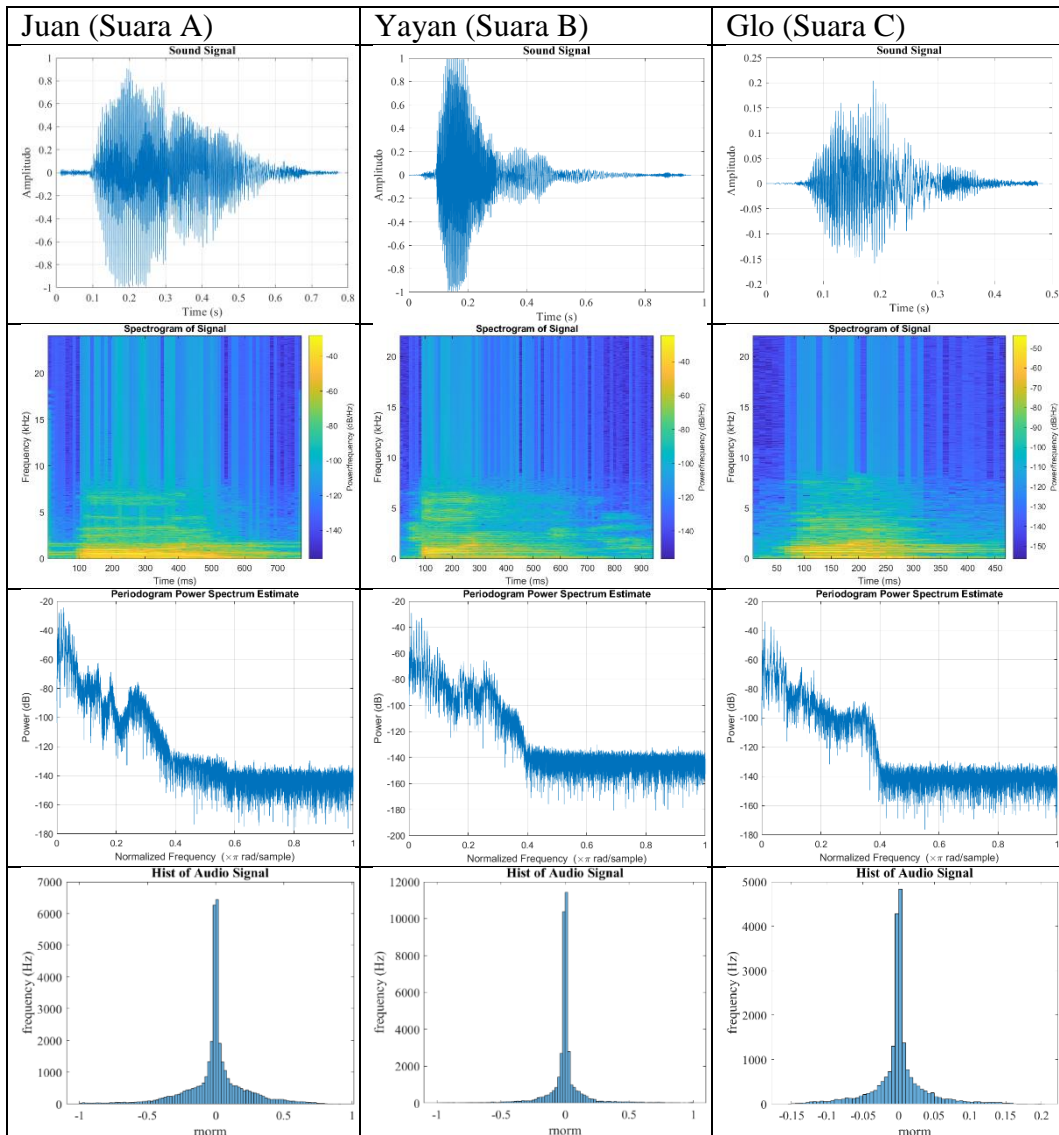
On 30 cm



On 40 cm



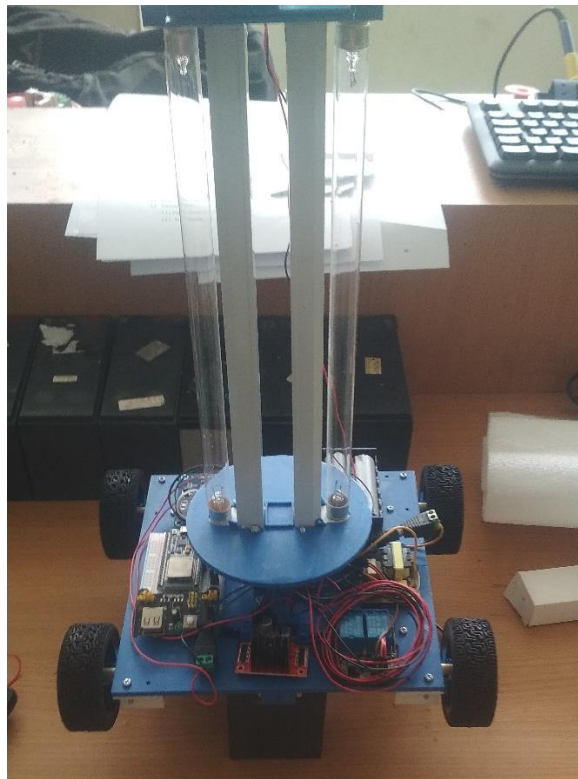
On 50 cm



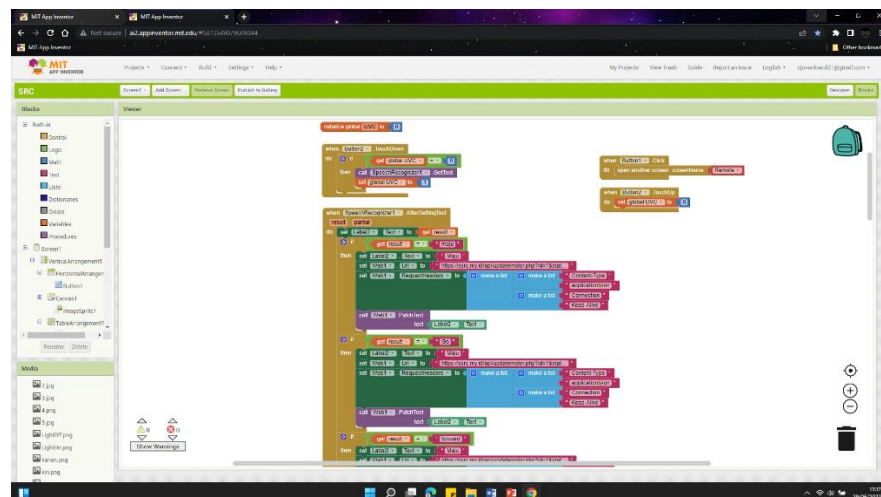


## Lampiran 3 Foto Kegiatan

### 1. Proses Perakitan dan pengujian Mobile Robot



**1.a** Perakitan Mobile Robot

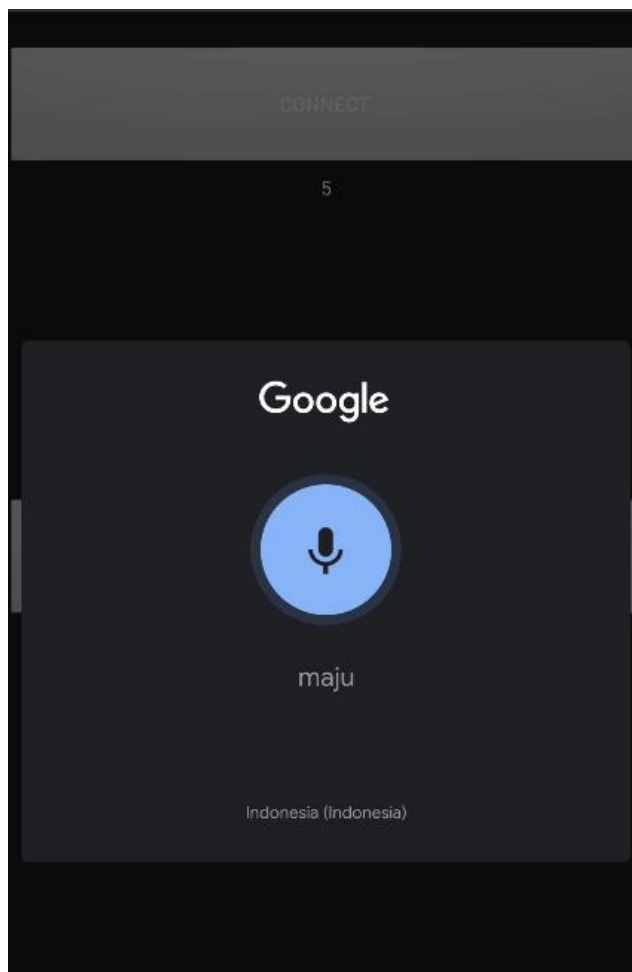


**1.b** Pembuatan Program MIT App Inventor



1.c Pengujian Mobile Robot

## 2. Proses Pengambilan Data



2.a Pengambilan efektivitas input suara terhadap perbedaan aksen