

DAFTAR PUSTAKA

- Aly, Sumarni Hamid. 2015. *Emisi Transportasi*. Jakarta: Penerbit Plus.
- Anggraini, Bima. dkk. 2013. *Penentuan Tingkat Kebisingan Lalu Lintas Di Jalan Tuanku Tambusai Pekanbaru*. Skripsi. Pekanbaru: Fakultas Matematika dan Ilmu Pengetahuan Alam Universitas Riau.
- Asmarani, Ruly. 2017. *Hubunga nantara Kemampuan Adaptasi terhadap Kebisingan dengan Stress Kerja Karyawan*. Jurnal Studia Insania, Mei 2017, Hal. 90 Vol. 5, No. 1 ISSN 2355-1011, e-ISSN 2549-3019 DOI: <http://dx.doi.org/10.18592/jsi.v5i1.1356>.
- Auliyah, Rizqah Nur. 2020. *Analisis Tingkat Kebisingan pada Kawasan Kuliner di Kota Makassar*. Skripsi. Makassar: Fakultas Teknik Universitas Hasanuddin.
- Departemen Pekerjaan Umum tentang Manual Kapasitas Jalan Indonesia (1997)
- Djalante, Susanti. 2010. *Analisis Tingkat Kebisingan di Jalan Raya yang Menggunakan Alat Pemberi Isyarat Lalu Lintas (APIL) Studikamus: Simpang Ade Swalayan*. Jurnal SMARTek, Vol. 8 No. 4. November 2010: 281.
- Ekawati, Diana. 2018. *Hubungan Gangguan Subjektif Kebisingan Kereta Api terhadap Konsentrasi Belajar Siswa SD Negeri Widoro Yogyakarta*. Skripsi. Yogyakarta: Universitas Islam Indonesia.
- Ghozali, Imam. 2013. *Aplikasi Analisis Multivariate dengan Program IBM SPSS 21 Update PLS Regresi*. Semarang: Badan Penerbit Universitas Diponegoro.
- Guntur, Andi Rachmat. 2014. *Analisis Tingkat Kekuatan Bunyi Klakson Kendaraan Ringan (Mobil Pribadi) Di Kota Makassar*. Skripsi. Makassar: Fakultas Teknik Universitas Hasanuddin.
- Hobbs, F. D. (1995). *Perencanaan Dan Teknik Lalu Lintas*. Gajah Mada University Press.
- Herawati, Peppy. 2016. *Dampak Kebisingan dari Aktifitas Bandara Sultan Thaha Jambi terhadap Pemukiman Sekitar Bandara*. Jurnal Ilmiah Universitas

- Batanghari Jambi Vol. 16 No.1.
- Hustim, Muralia. 2019. *Bahan Ajar Bising dan Getaran Departemen Teknik Lingkungan*. Makassar: Fakultas Teknik Universitas Hasanuddin.
- Kamus Besar Bahasa Indonesia (KBBI) Edisi Kelima. 2021. Aplikasi Luring Resmi Badan Pengembangan dan Pembinaan Bahasa, Kementerian Pendidikan dan Kebudayaan Republik Indonesia. (Online).
- Kementerian Kesehatan RI. 1987. Permenkes No. 718/Men/Kes/Per/XI/1987. Tentang Kebisingan yang Berhubungan dengan Kesehatan. Jakarta: Kementerian Kesehatan RI.
- Kementerian Lingkungan Hidup Republik Indonesia. 1996. Kepmen LH Nomor 48/MEN.LH/11/1996. Tentang Baku Tingkat Kebisingan. Jakarta: Kementerian Lingkungan Hidup RI.
- Machdar, Izarul. 2018. *Pengantar Pengendalian Pencemaran (Pencemaran Air, Pencemaran Udara dan Kebisingan)*. Yogyakarta: Deepublish. ISBN 978-602-453-634-3.
- Marisdayana, R. 2016. *Hubungan Intensitas Paparan Bising dan Masa Kerja dengan Gangguan Pendengaran Pada Karyawan PT. X*. Jurnal Kesehatan Lingkungan Indonesia.
- Mediastika, Christina E. 2009. *Material Akustik Pengendali Kualitas Bunyi pada Bangunan*. Yogyakarta: Penerbit Andi.
- Muin, Aiman. 2022. *Studi Karakteristik Kebisingan di Simpang Jalan AP Pettarani Kota Makassar*. Universitas Hasanuddin
- Parubak, Egberson Sulu. 2022. *Studi Karakteristik Kebisingan di Ruas Jalan A.P. Pettarani Makassar*. Universitas Hasanuddin
- Peraturan Pemerintah Republik Indonesia Nomor 34 Tahun 2006 Tentang Jalan
- Ramli, Yesmi Rahmadani. 2017. *Tugas Akhir "Model Prediksi Kebisingan Lalu Lintas Heterogen Berbasis Model ASJ-RTN 2008 Untuk Tipe Jalan 4/2D"*. Skripsi. Makassar: Fakultas Teknik Universitas Hasanuddin.
- Rudini, Hendrik Pristianto. 2018. *Analisa Kebisingan Akibat Aktivitas Transportasi di Jalan Ahmad Yani Kota Sorong*. Universitas Muhammadiyah Sorong.
- Setiawan, Agung. 2017. *Prediksi Tingkat Kebisingan Lalu Lintas Heterogen*

Berbasis Sistem Informasi Geografis. Skripsi. Makassar: Fakultas Teknik Universitas Hasanuddin.

Sufren dan Yonathan Natanael. 2014. *Belajar Otodidak SPSS Pasti Bisa*. ISBN: 978-602-02-5203-2. Jakarta: PT Gramedia.

Surat Edaran Menteri Tenaga Kerja, Transmigrasi dan Koperasi No. SE01/MEN/1978 tentang Nilai Ambang Batas.

Undang-Undang Republik Indonesia No. 38 Tahun 2004 Tentang Jalan

Wahyuni, Femy. 2021. *Studi Tingkat Kebisingan Pada Kawasan di Sekitar Jalur Jalan (Frontage) Tol Makassar*. Universitas Hasanuddin.

Widaryanti, Nadiyah. 2018. *Analisis Pengurangan Tingkat Kebisingan Lalu Lintas terhadap Rencana Pembangunan Jalan Tol*. Skripsi. Makassar: Universitas Hasanuddin.

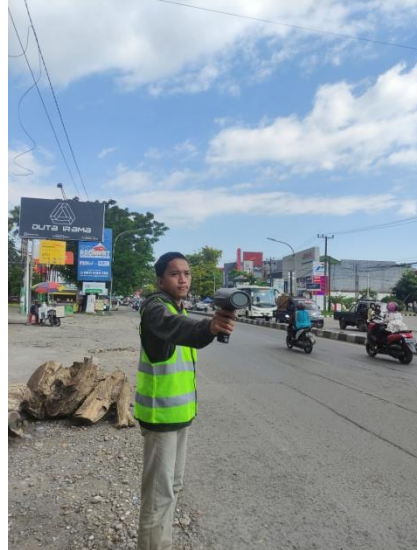
LAMPIRAN

Lampiran 1 Dokumentasi Pengambilan Data

- Titik Pengamatan R1



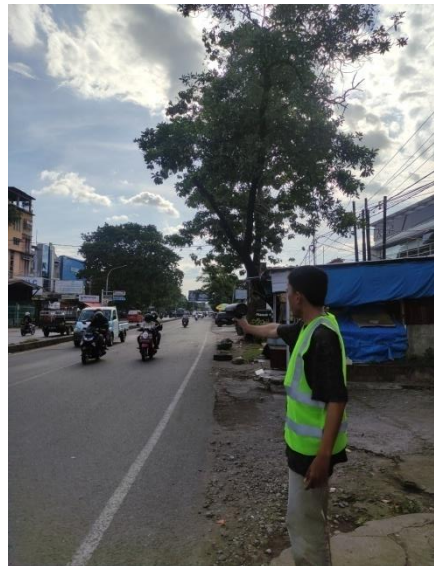
- Titik Pengamatan R2



- Titik Pengamatan R3



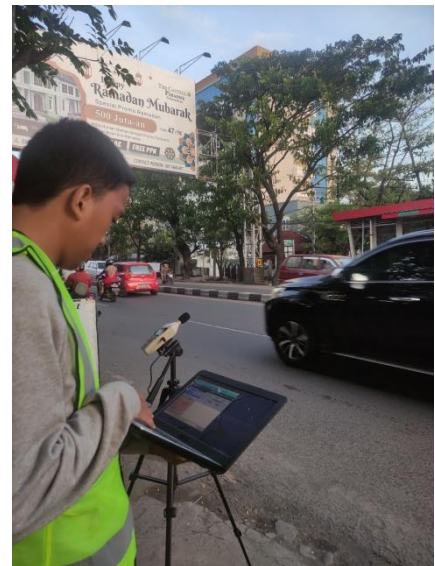
- Titik Pengamatan R4



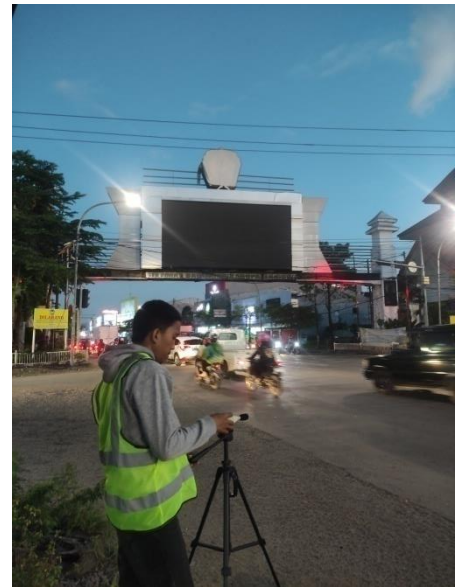
- Titik Pengamatan R5



- Titik Pengamatan R6



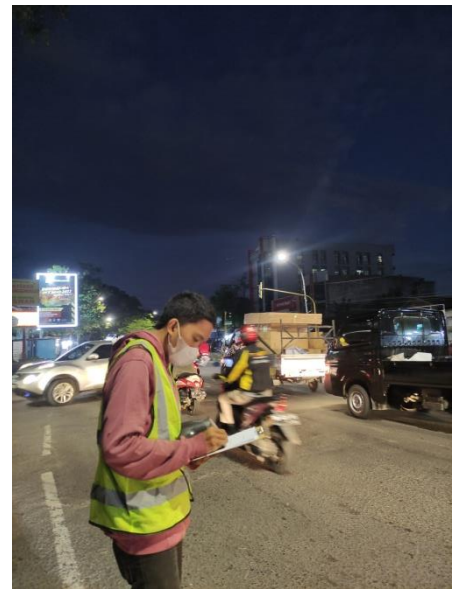
- Titik Pengamatan S1



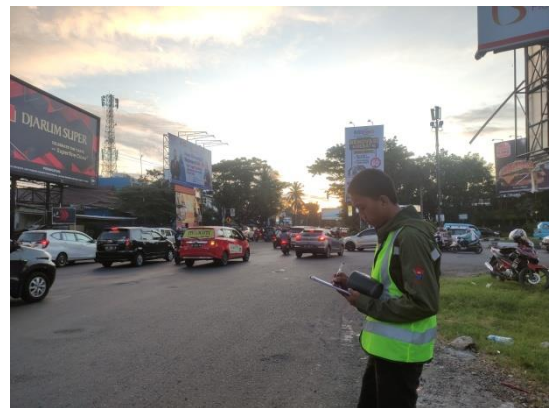
- Titik Pengamatan S2



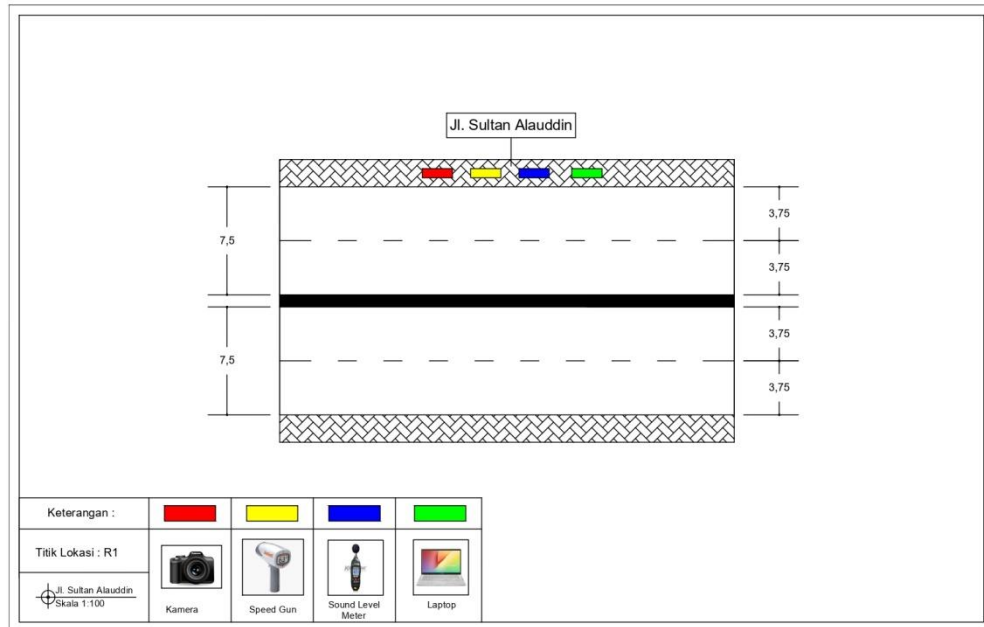
- Titik Pengamatan S3



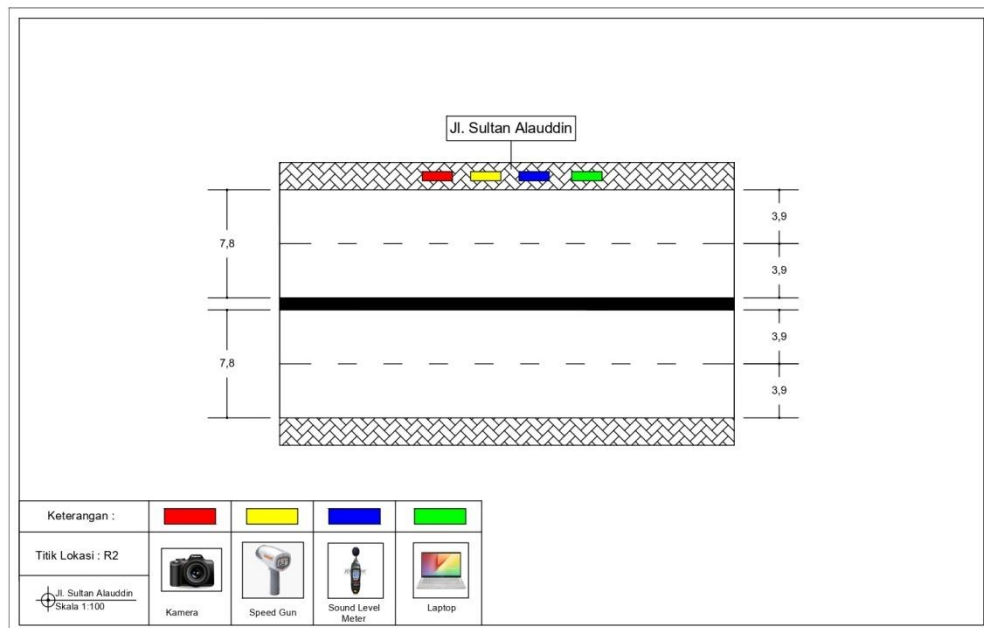
- Titik Pengamatan S4



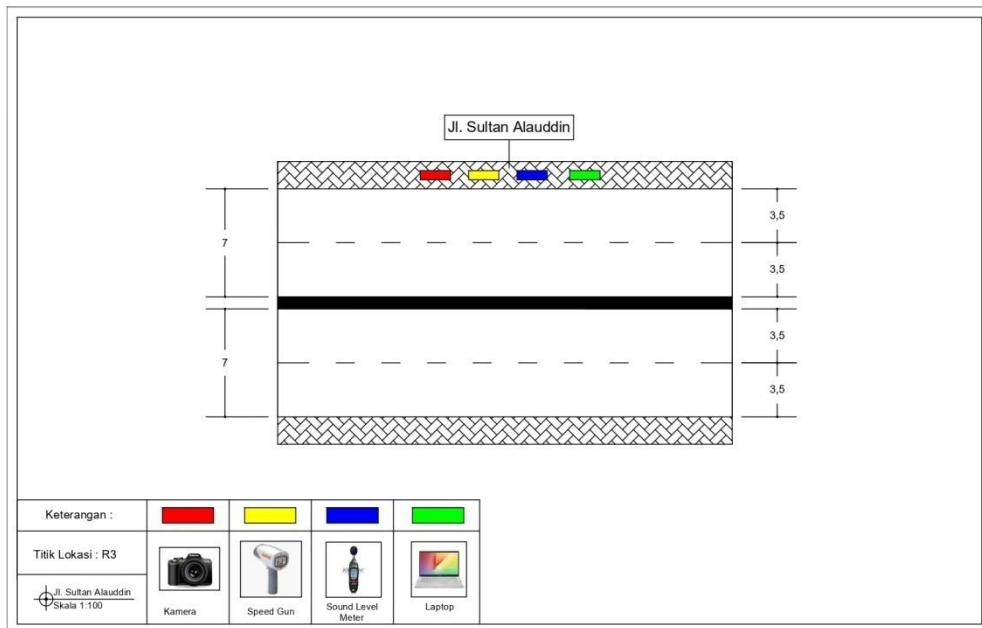
Lampiran 2 Layout untuk Tiap Titik Pengamatan



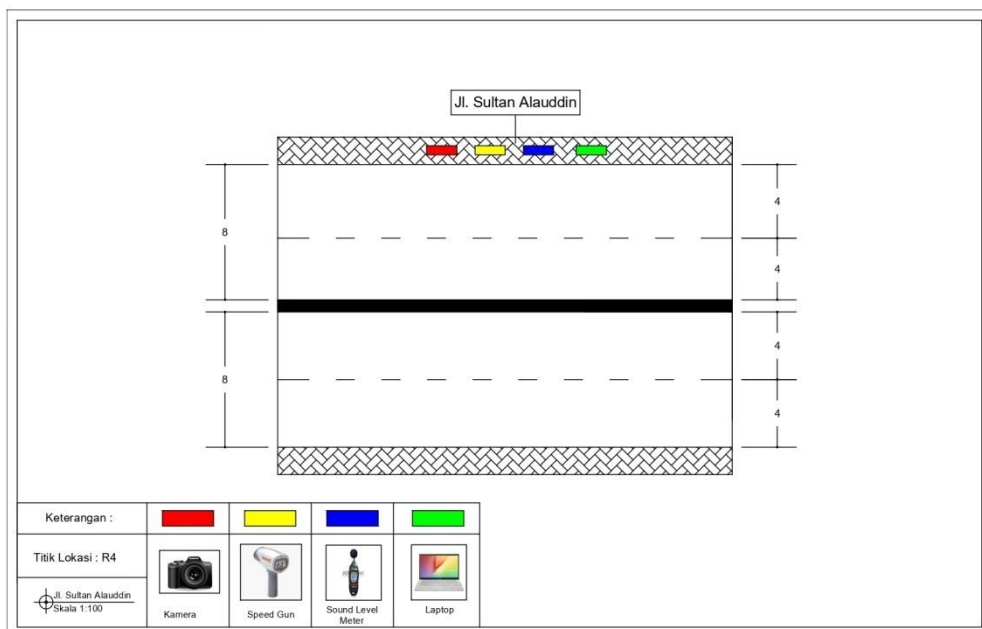
Titik Pengamatan R1



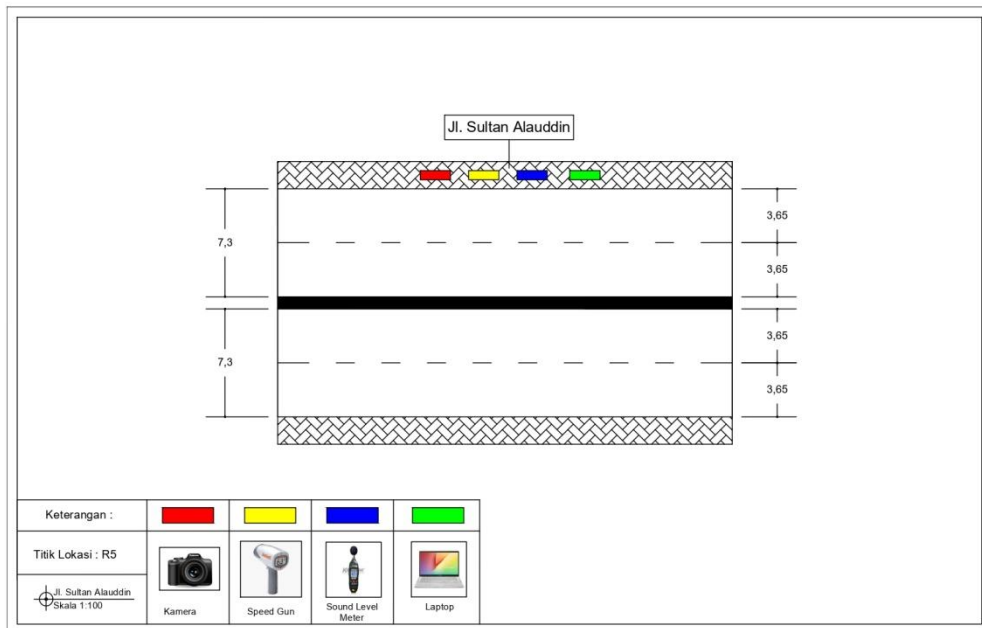
Titik Pengamatan R2



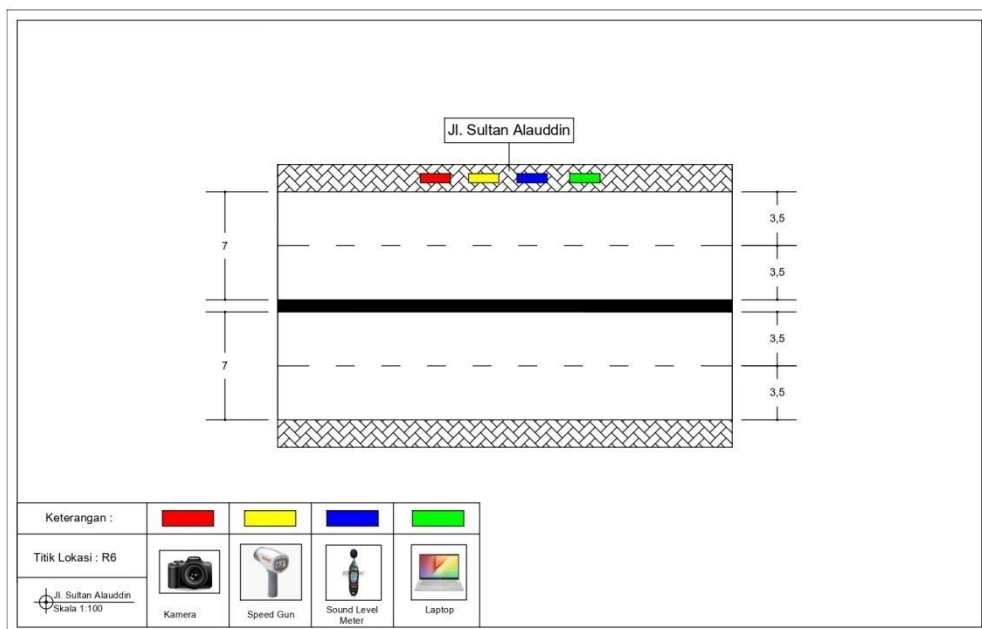
Titik Pengamatan R3



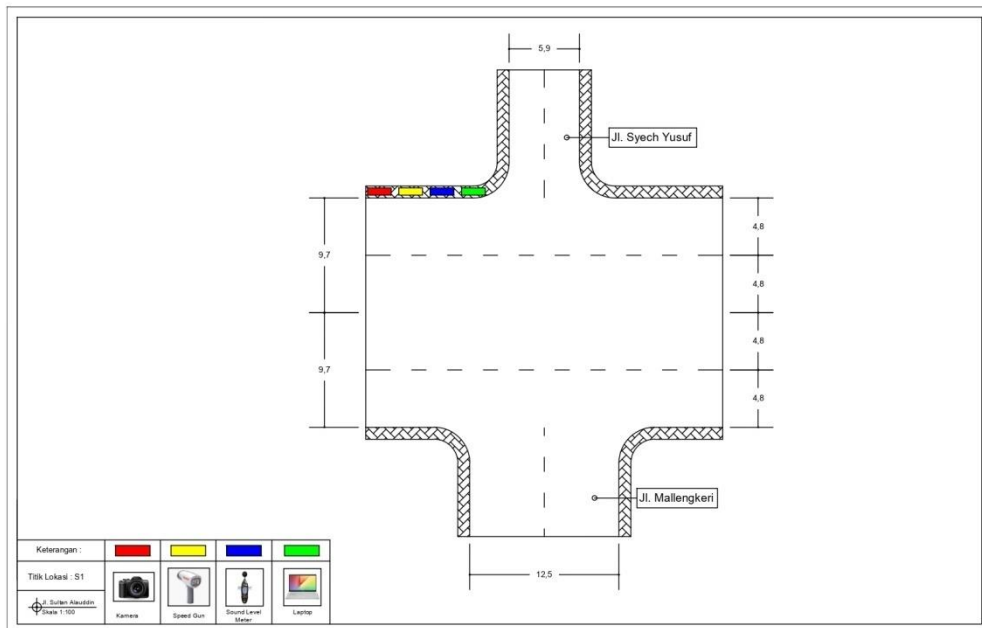
Titik Pengamatan R4



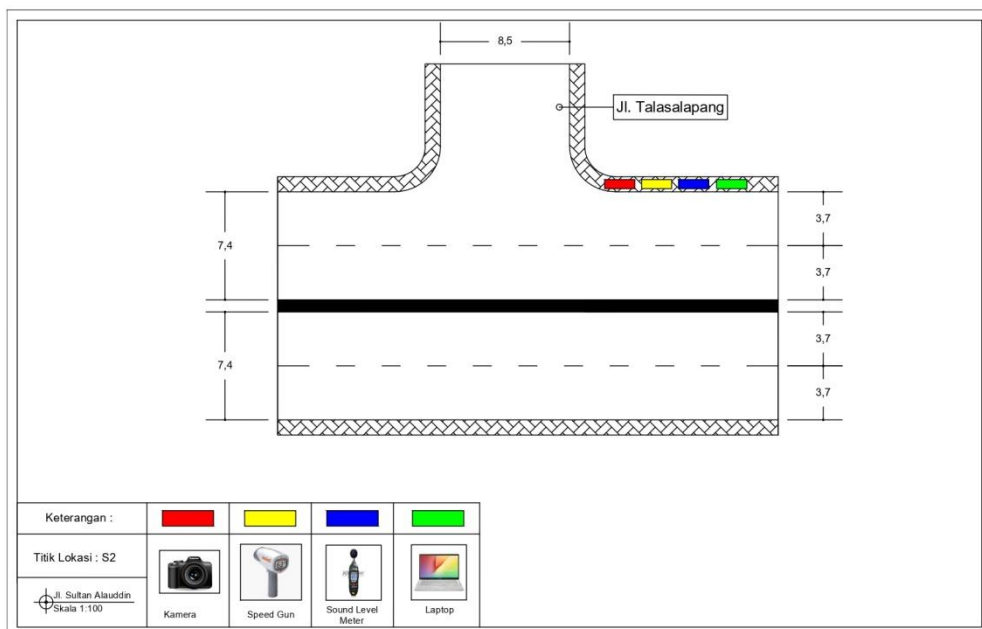
Titik Pengamatan R5



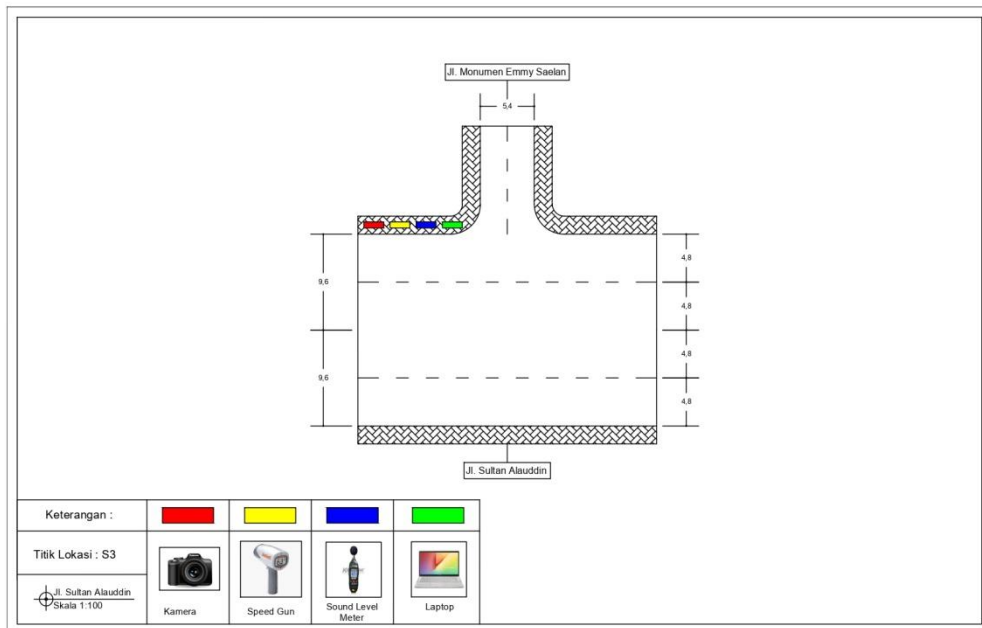
Titik Pengamatan R6



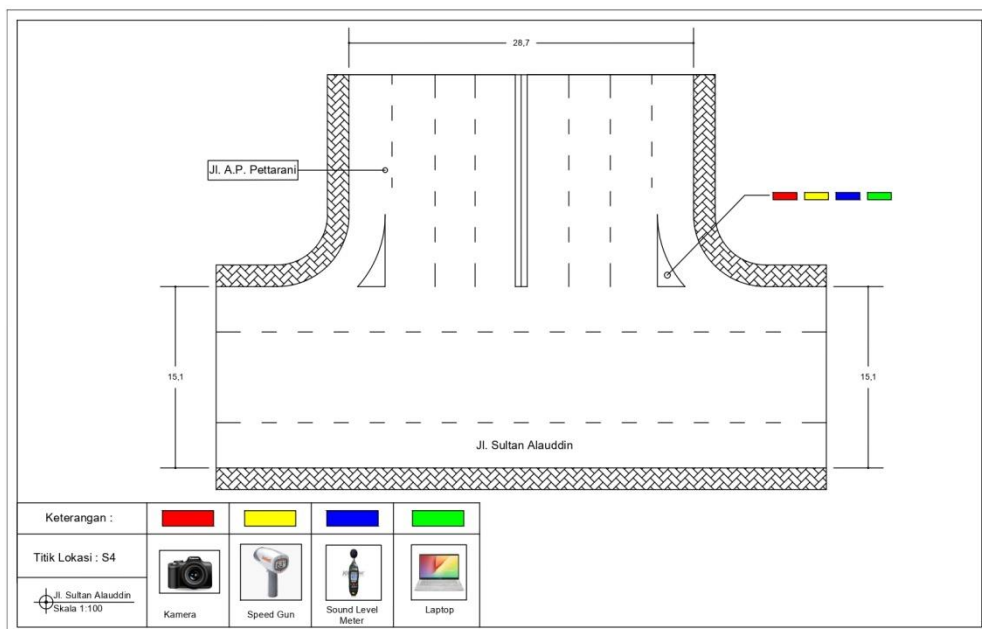
Titik Pengamatan S1



Titik Pengamatan S2



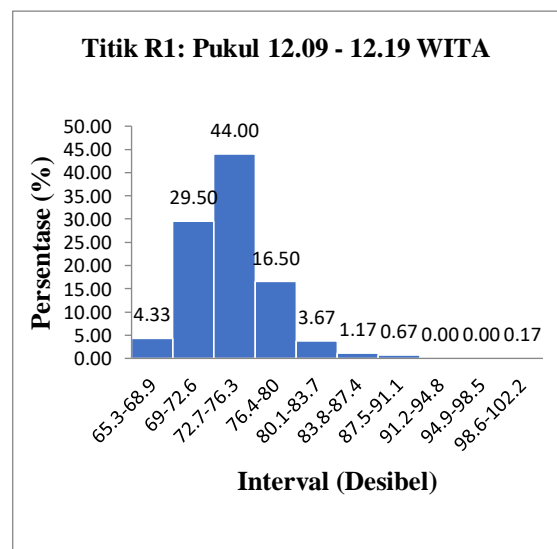
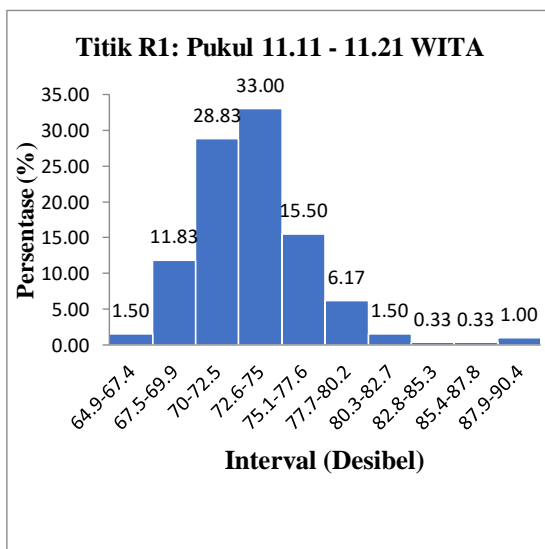
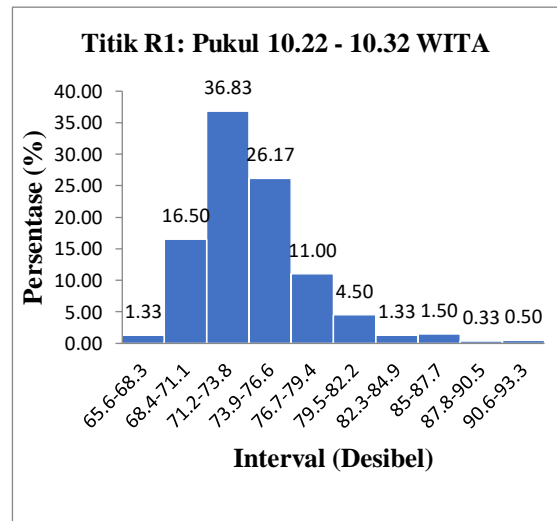
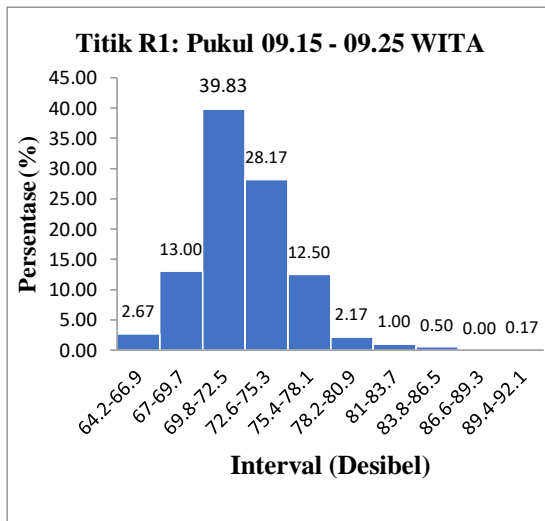
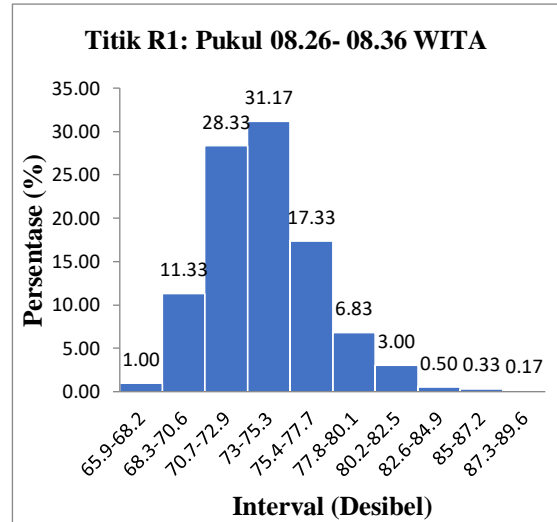
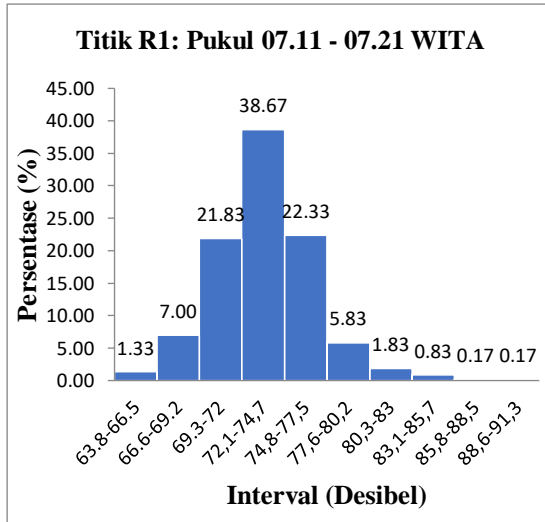
Titik Pengamatan S3



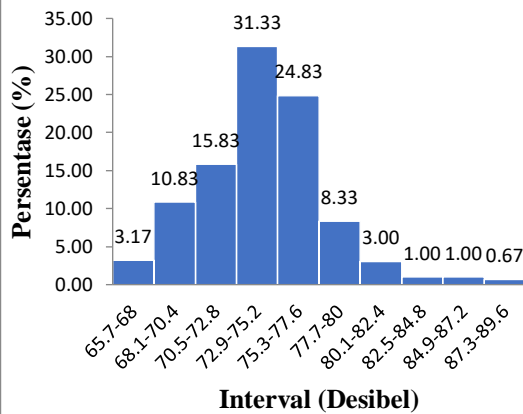
Titik Pengamatan S4

Lampiran 3 Histogram Distribusi Tingkat Kebisingan

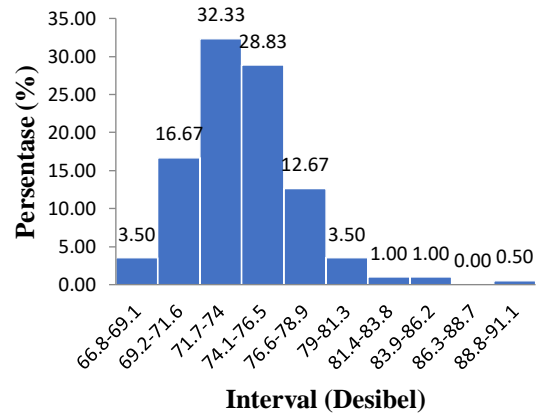
a. Titik Pengamatan R1



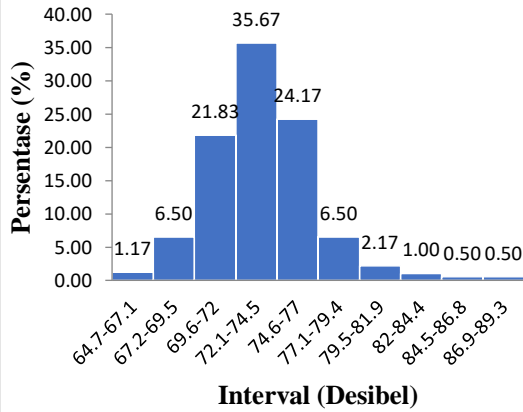
Titik R1: Pukul 13.23 - 13.33 WITA



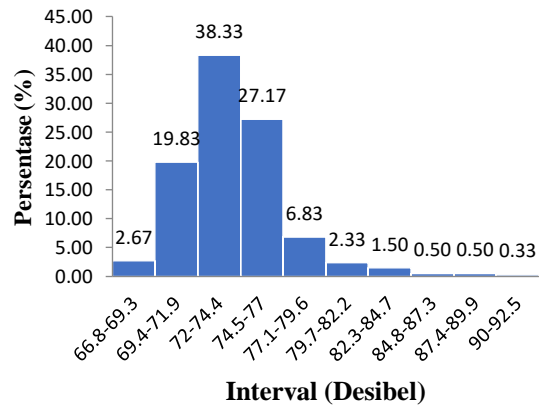
Titik R1: Pukul 14.24 - 14.34 WITA



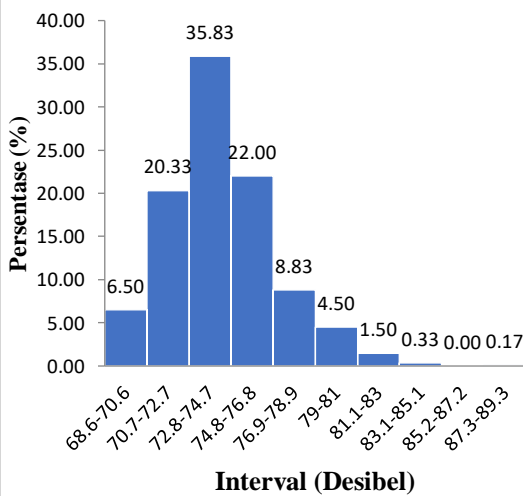
Titik R1: Pukul 15.49 - 15.59 WITA



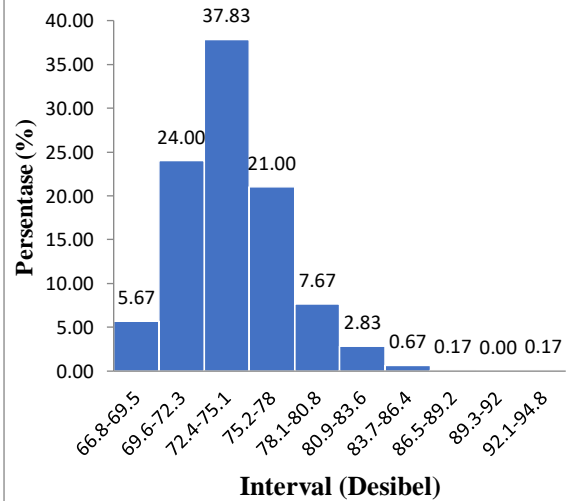
Titik R1: Pukul 16.04 - 16.14 WITA



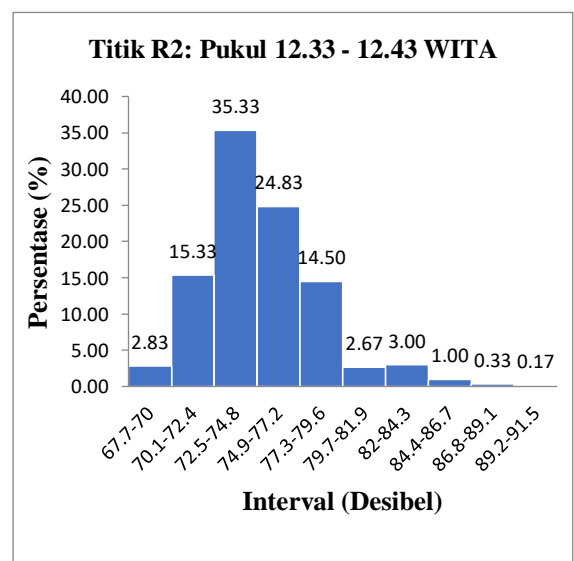
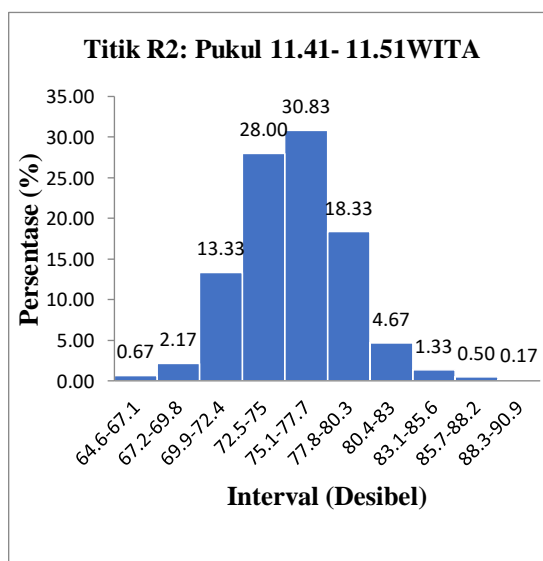
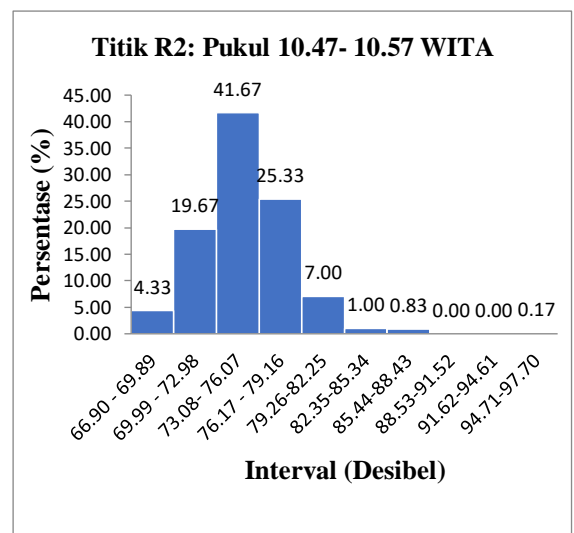
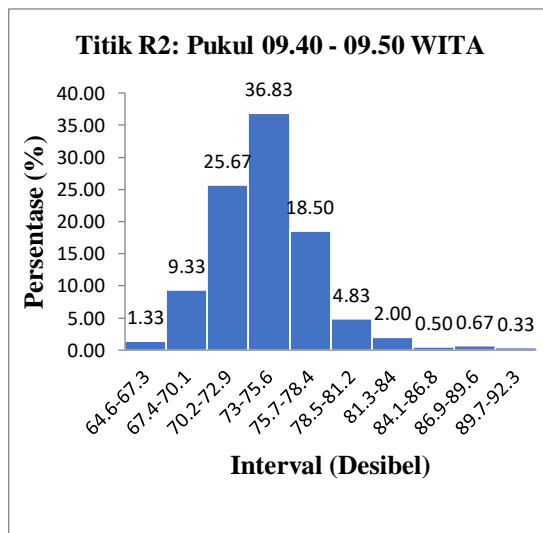
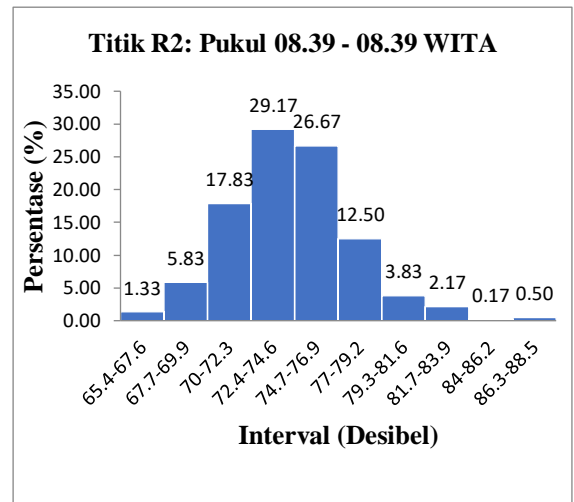
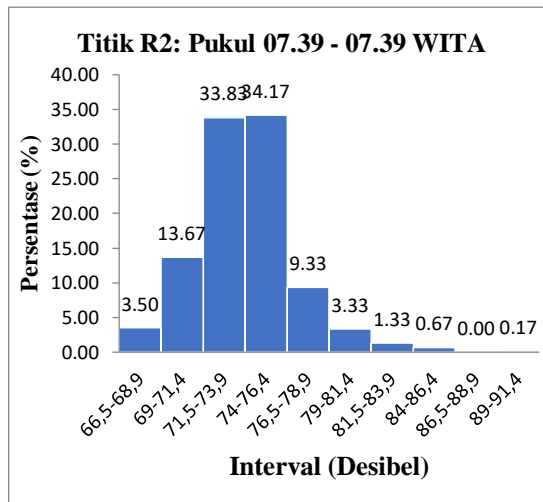
Titik R1: Pukul 17.43 - 17.53 WITA



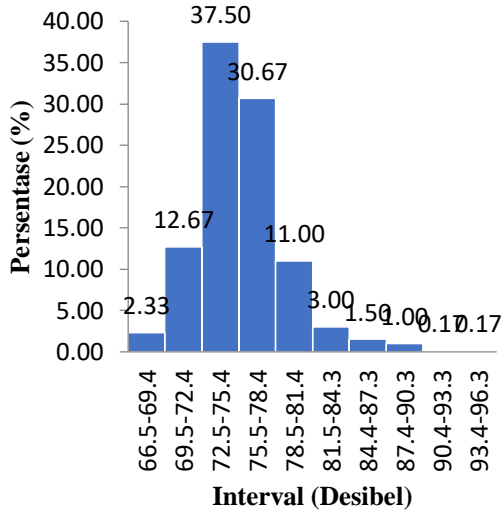
Titik R1: Pukul 18.04 - 18.14 WITA



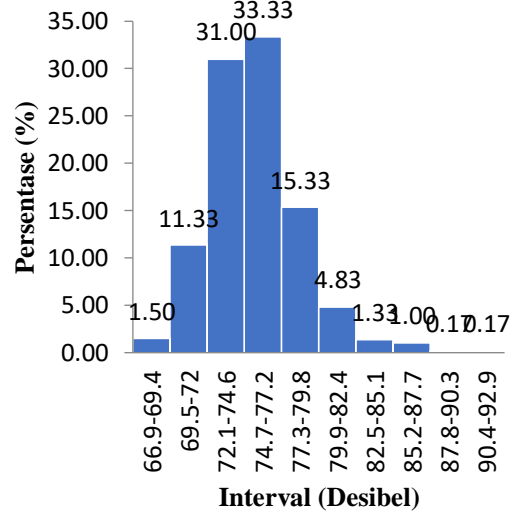
b. Titik Pengamatan R2



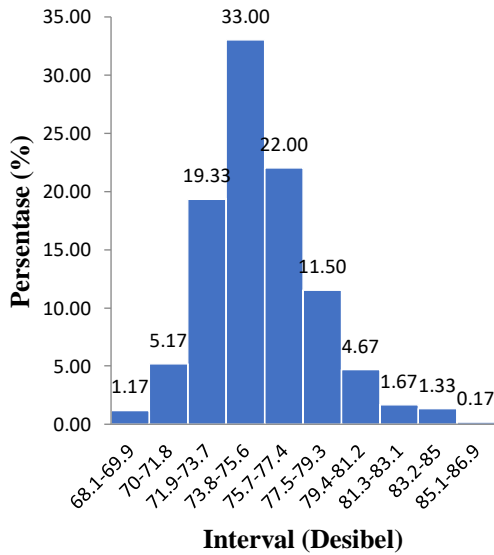
Titik R2: Pukul 13.46- 13.56WITA



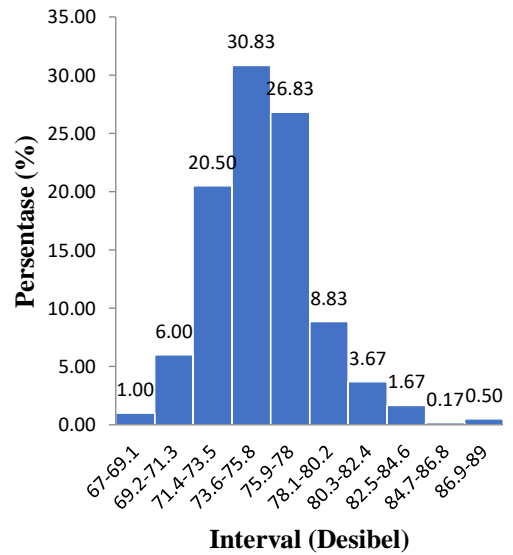
Titik R2: Pukul 14.49- 14.59 WITA



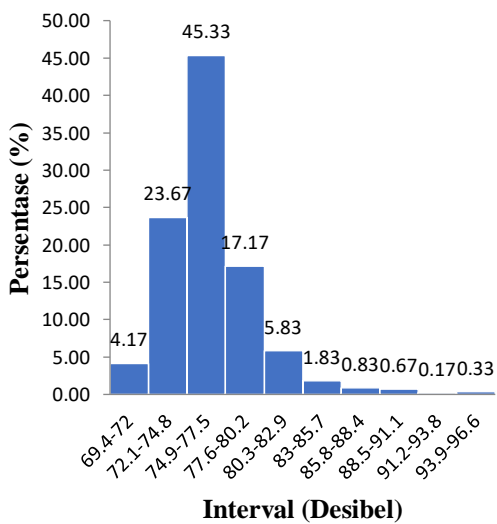
Titik R2: Pukul 15.09 - 15.19 WITA



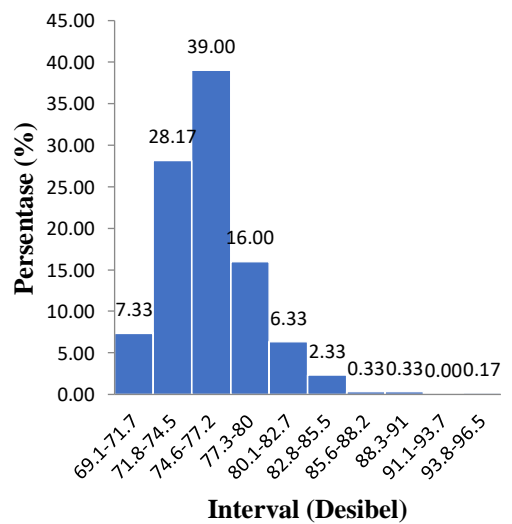
Titik R2: Pukul 16.46- 16.56WITA



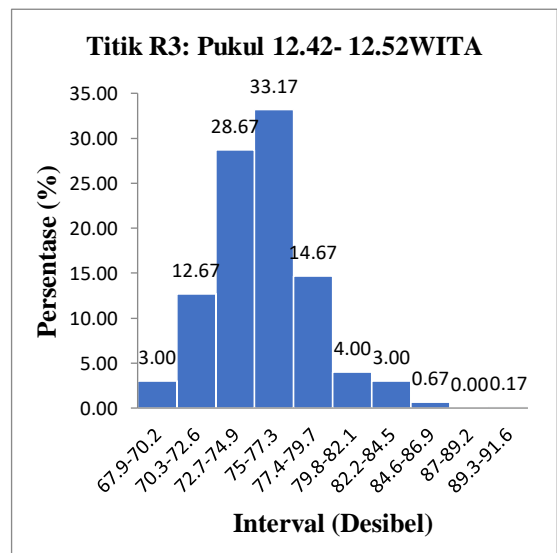
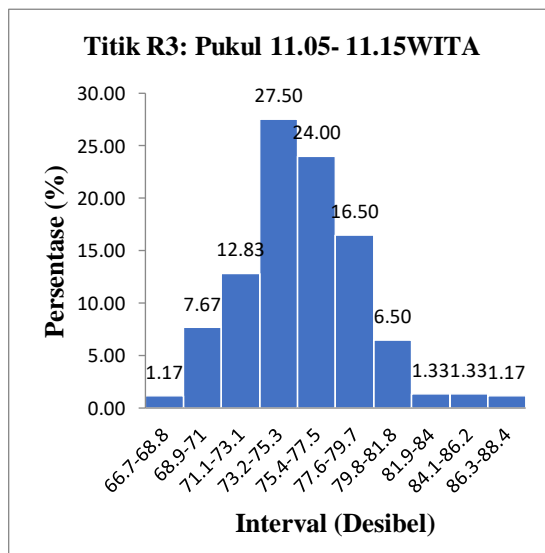
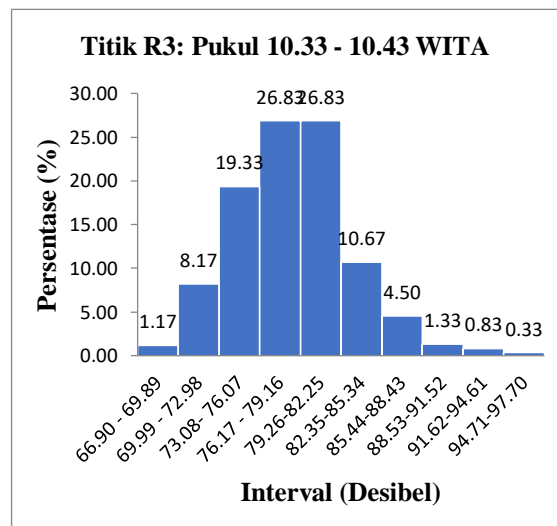
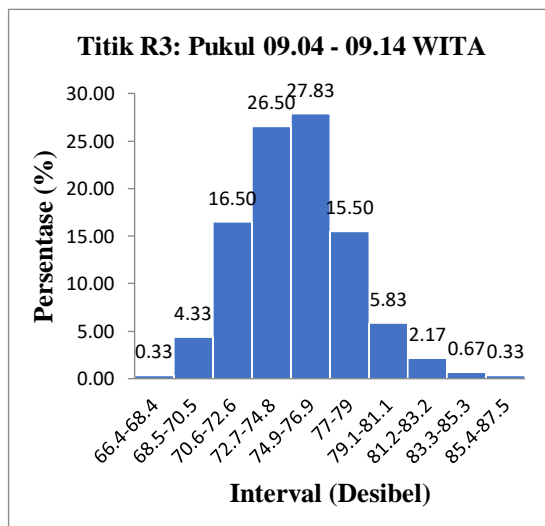
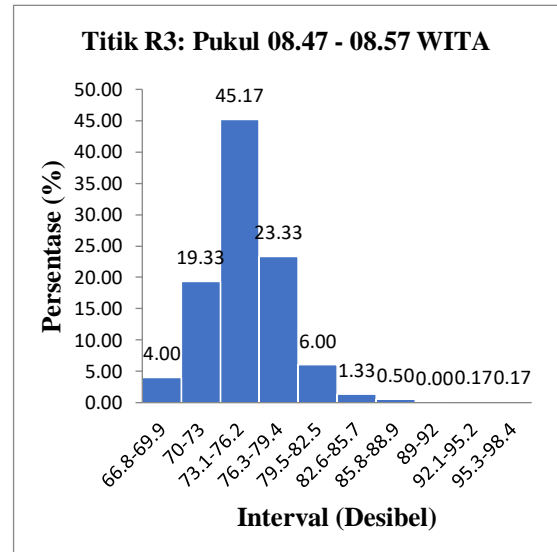
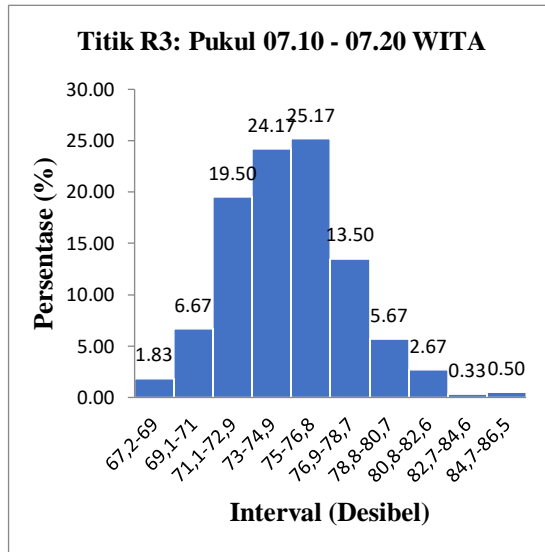
Titik R2: Pukul 17.19 - 17.29 WITA



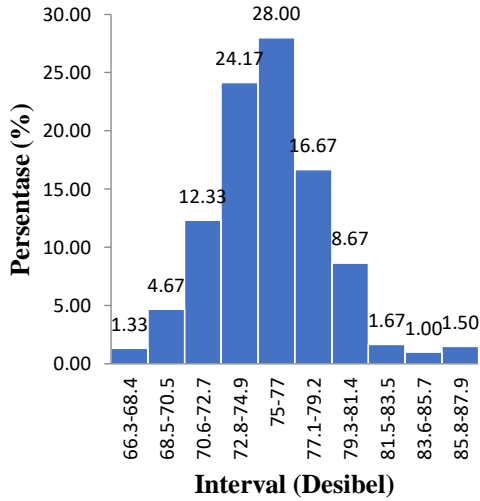
Titik R2: Pukul 18.43- 18.53 WITA



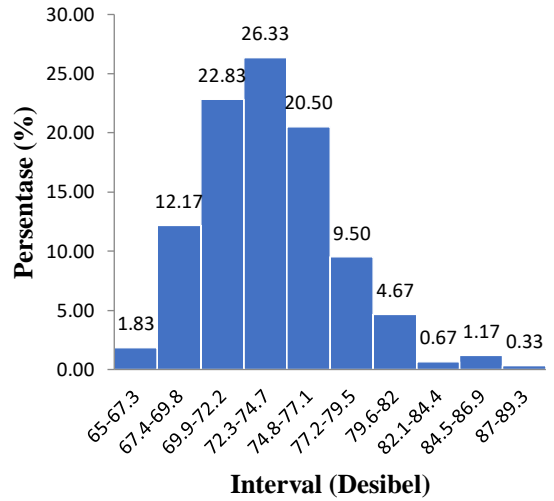
c. Titik Pengamatan R3



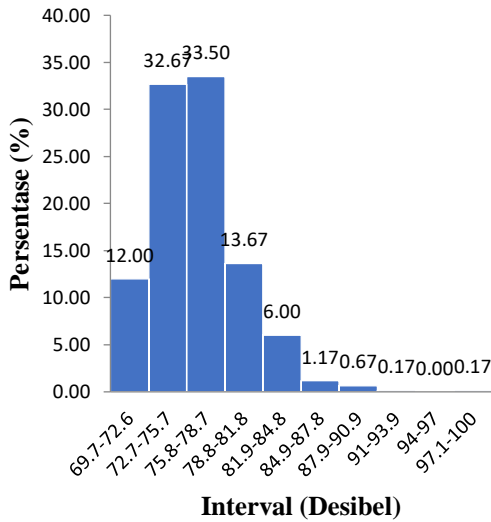
Titik R3: Pukul 13.08- 13.18WITA



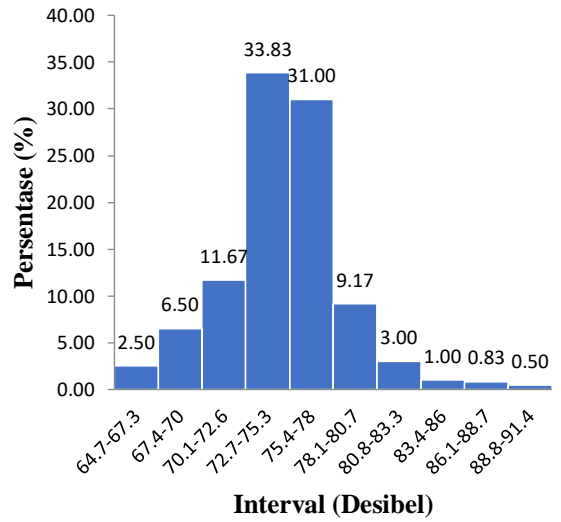
Titik R3: Pukul 14.50- 15.00 WITA



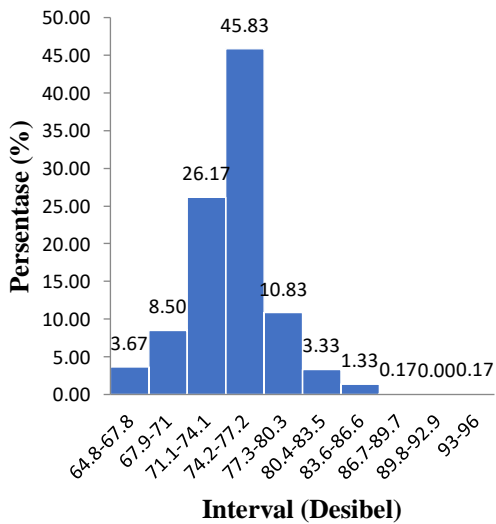
Titik R3: Pukul 15.08- 15.18 WITA



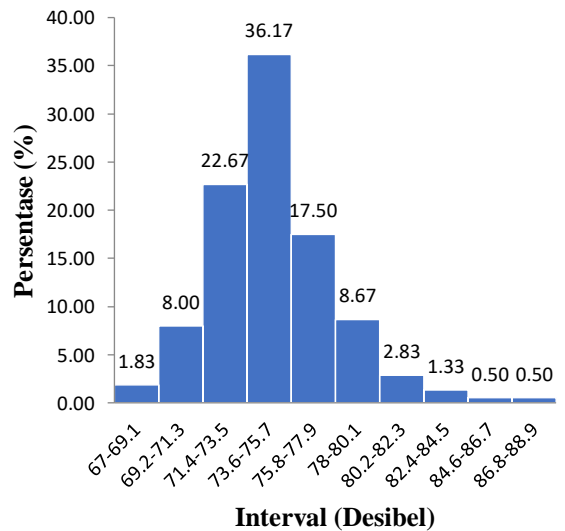
Titik R3: Pukul 16.47- 16.57 WITA



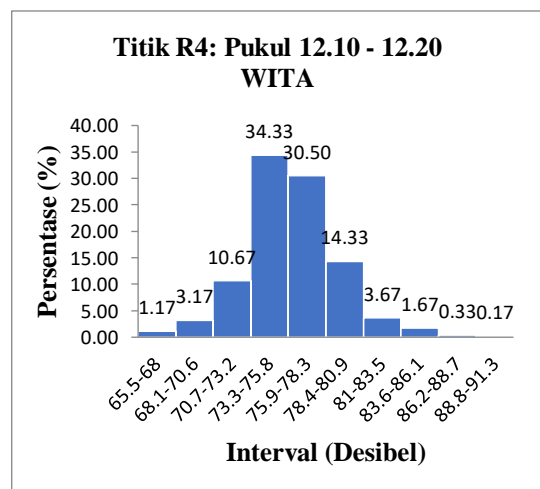
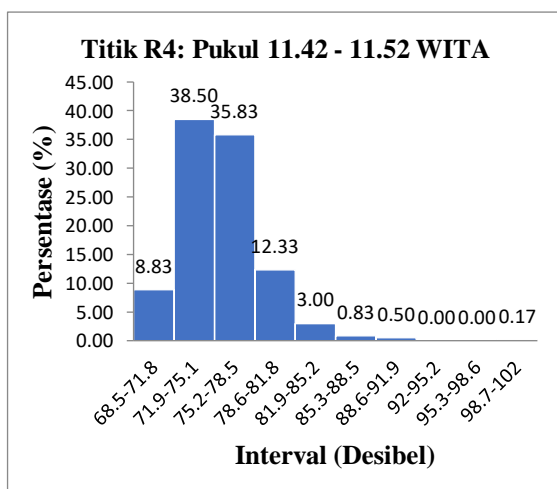
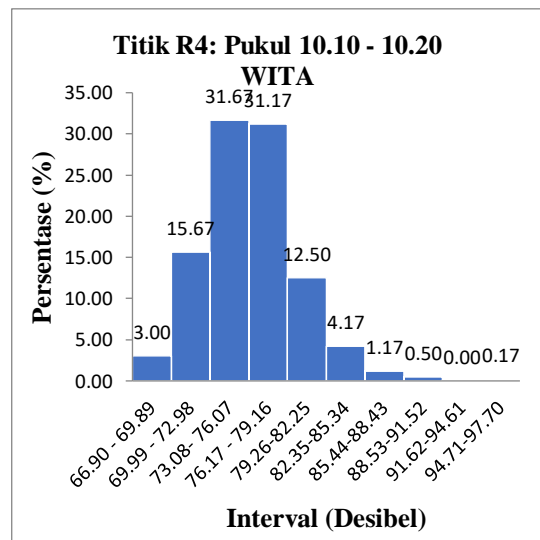
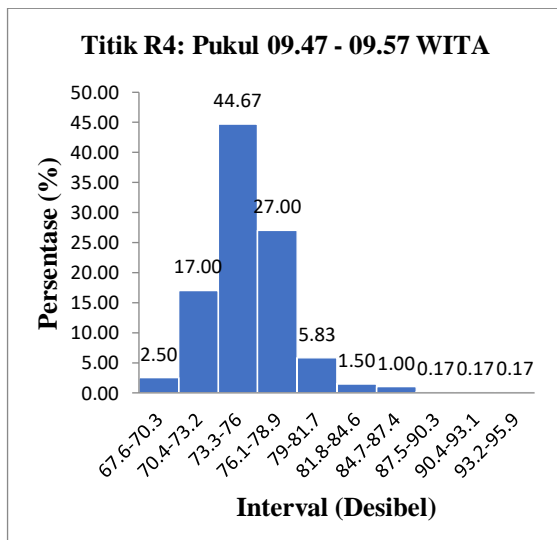
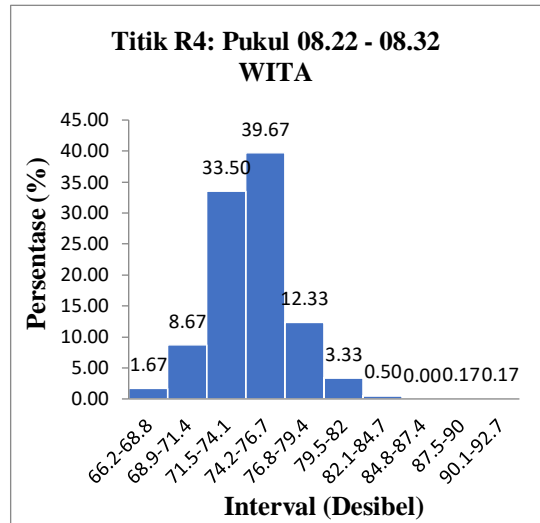
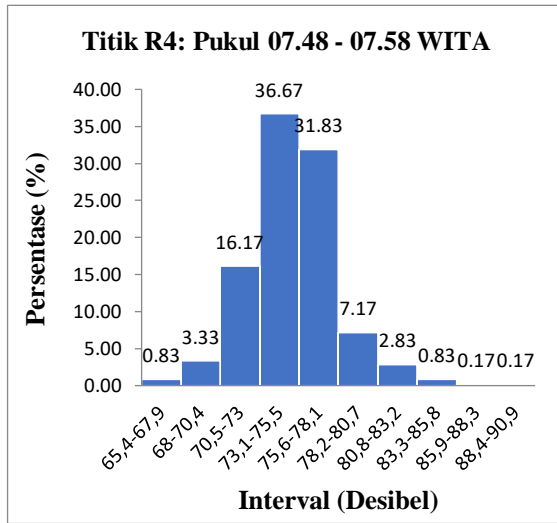
Titik R3: Pukul 17.05 - 17.15 WITA

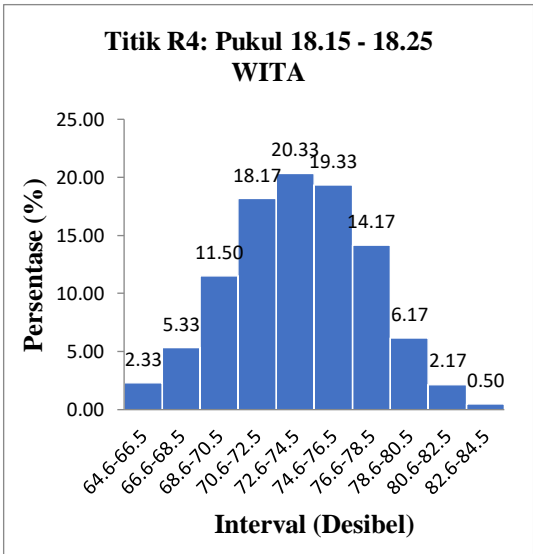
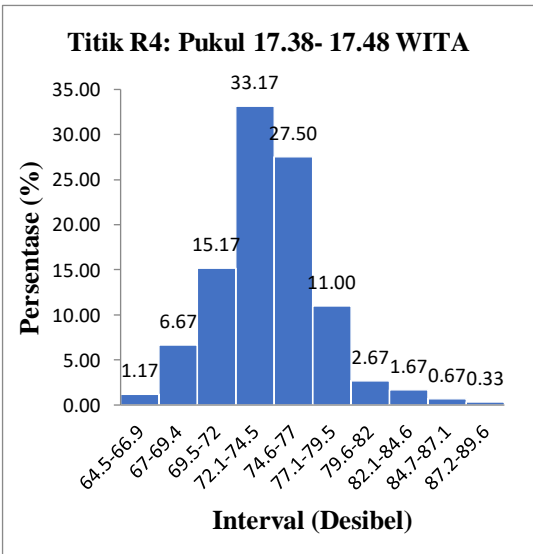
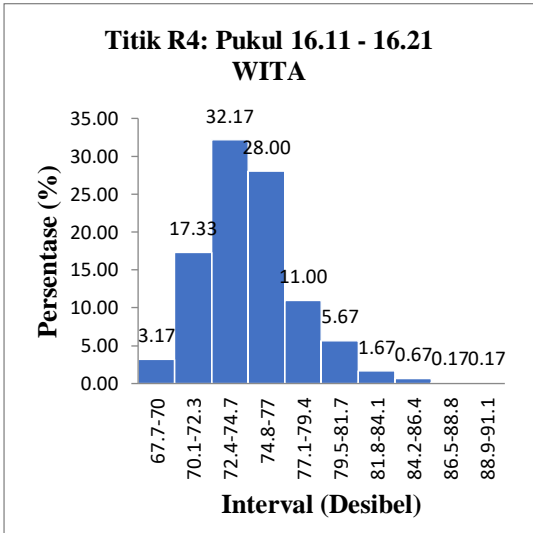
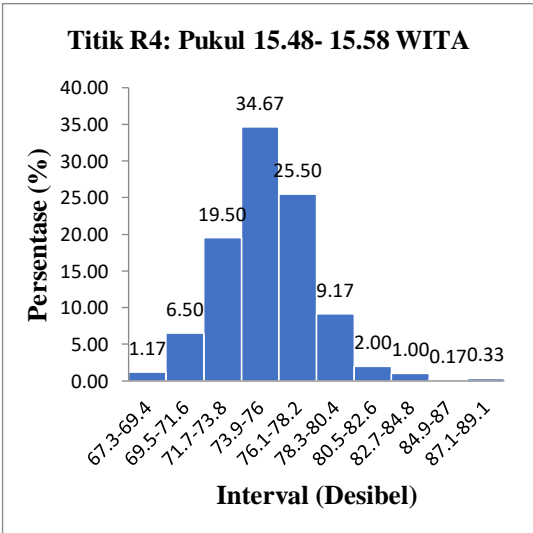
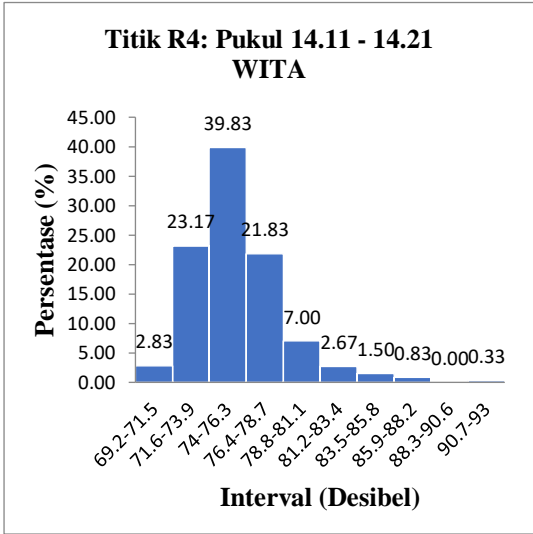
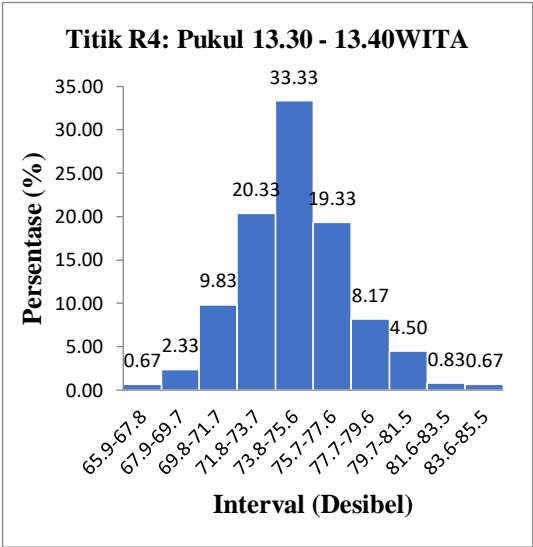


Titik R3: Pukul 18.40- 18.50 WITA

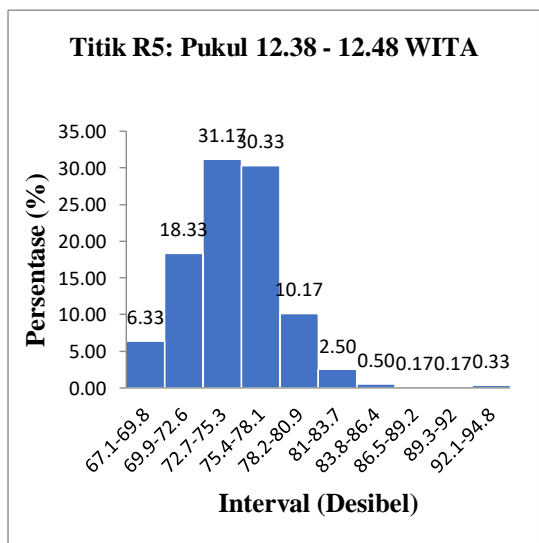
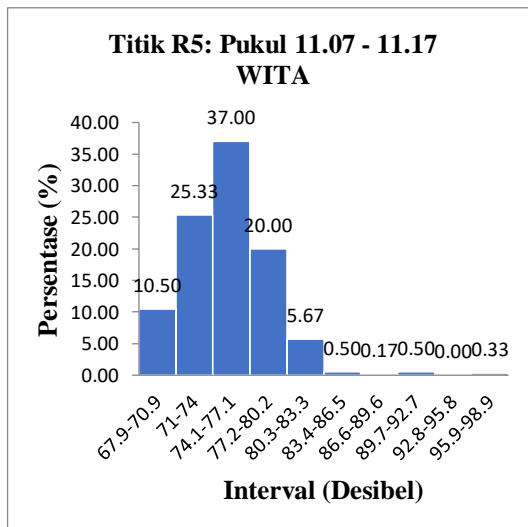
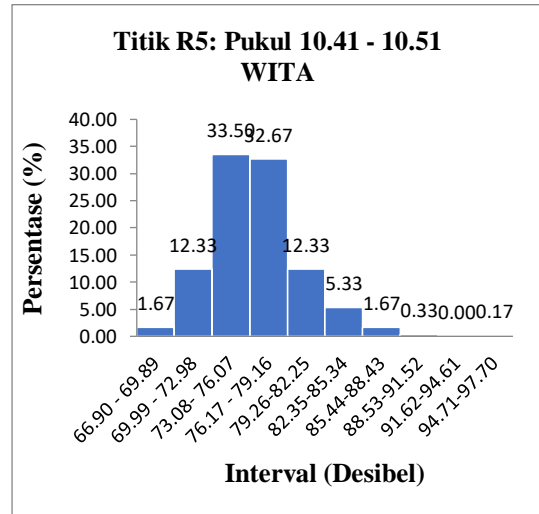
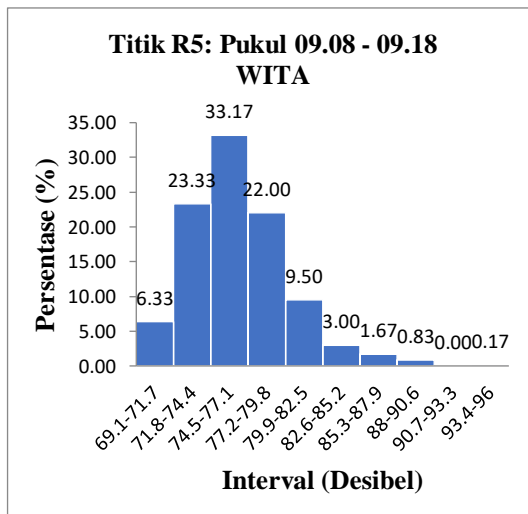
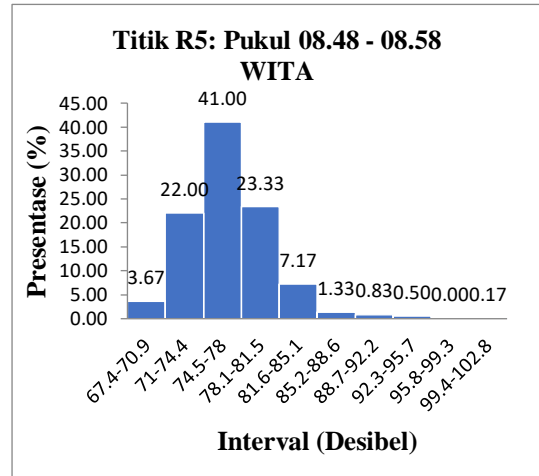
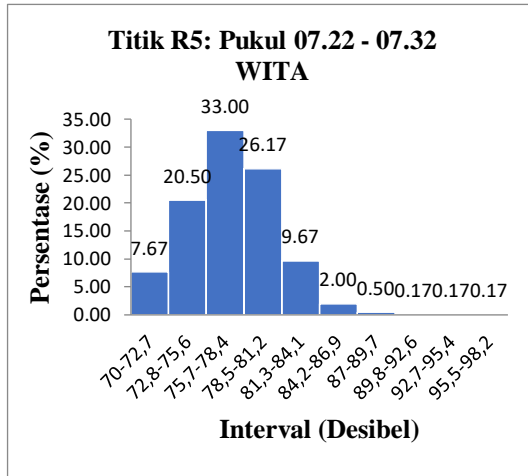


d. Titik Pengamatan R4

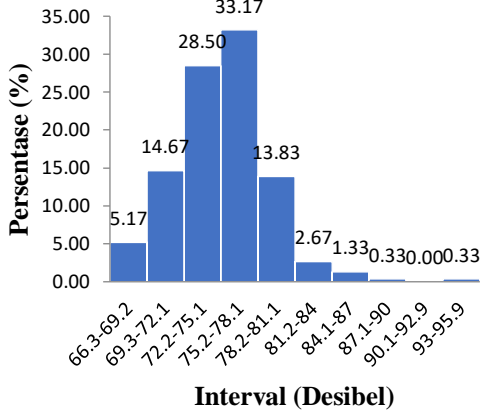




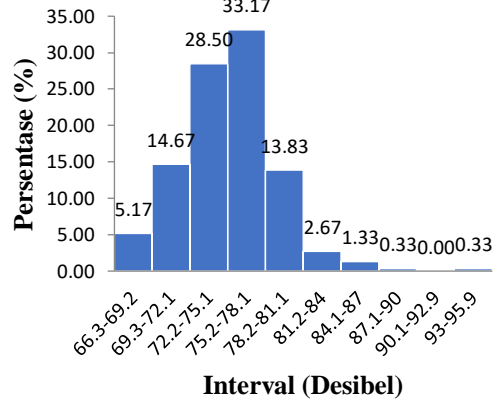
e. Titik Pengamatan R5



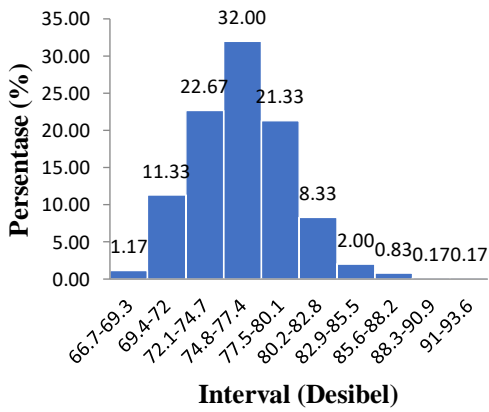
**Titik R5: Pukul 13.17 - 13.27
WITA**



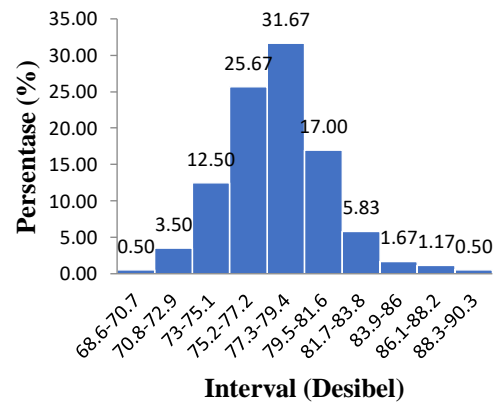
**Titik R5: Pukul 14.41 - 14.51
WITA**



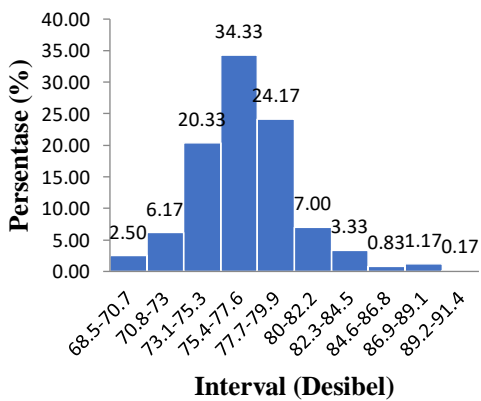
**Titik R5: Pukul 15.08 - 15.18
WITA**



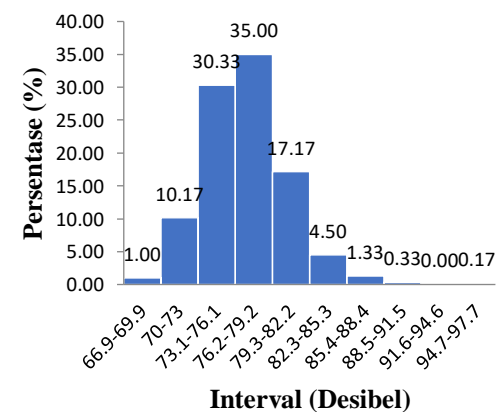
**Titik R5: Pukul 16.36 - 16.46
WITA**



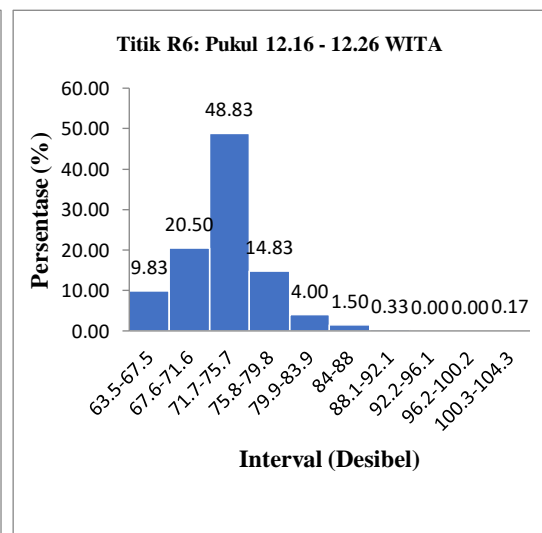
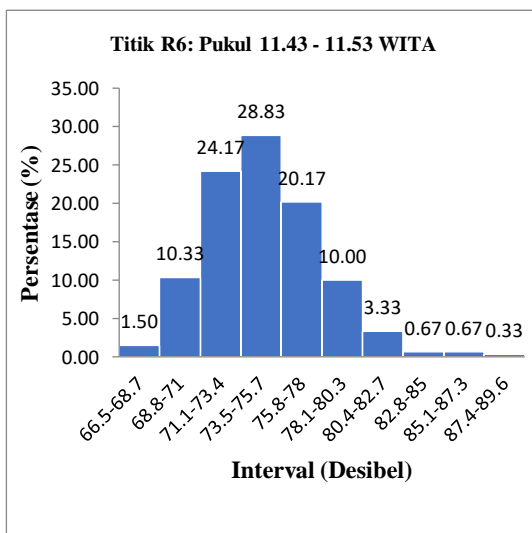
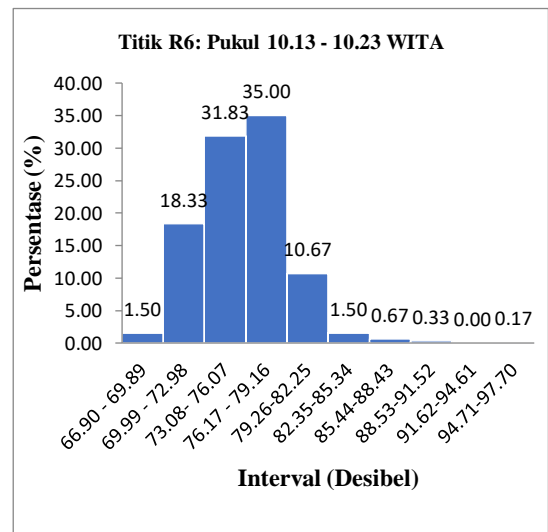
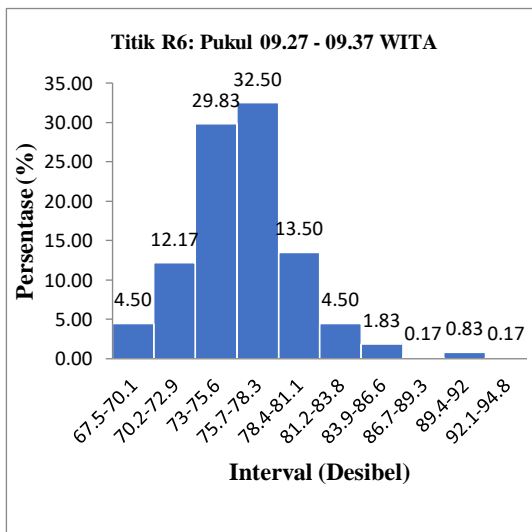
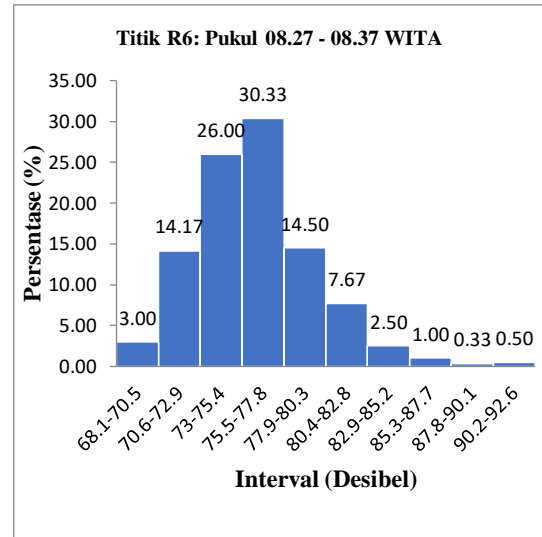
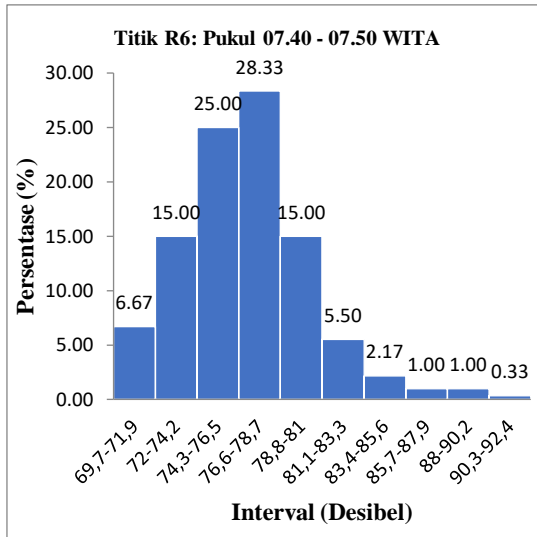
**Titik R5: Pukul 17.03 - 17.13
WITA**

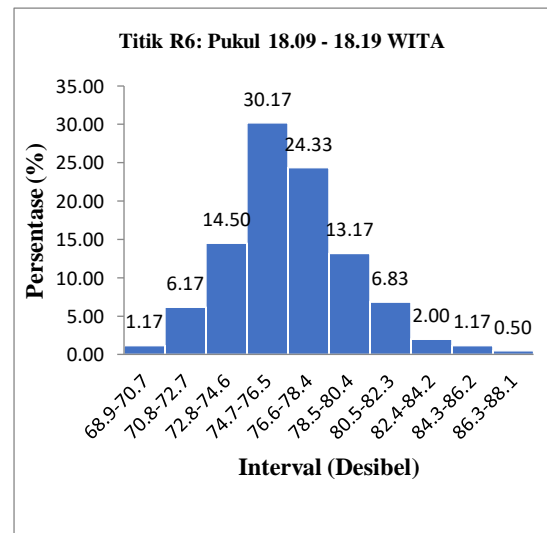
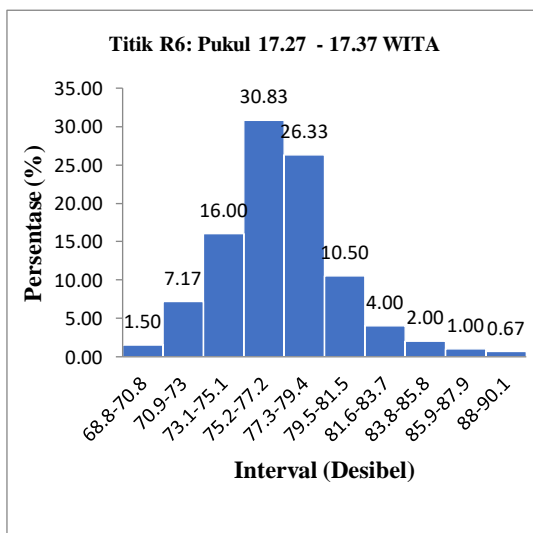
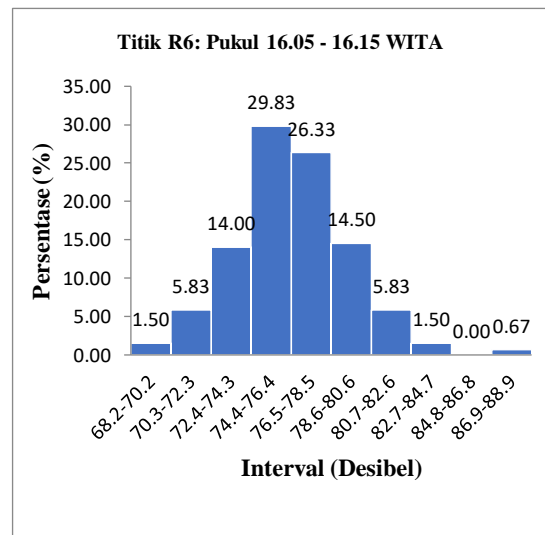
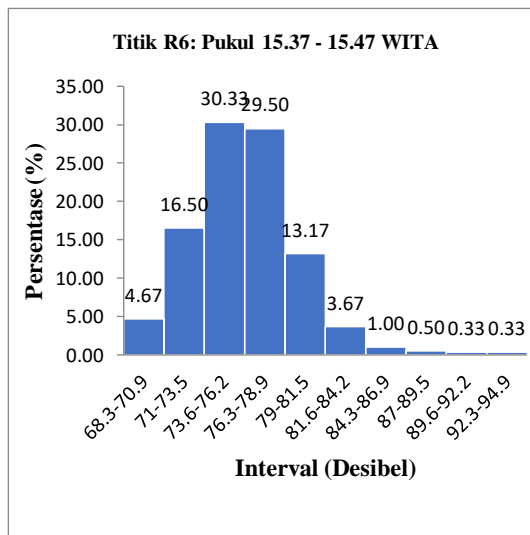
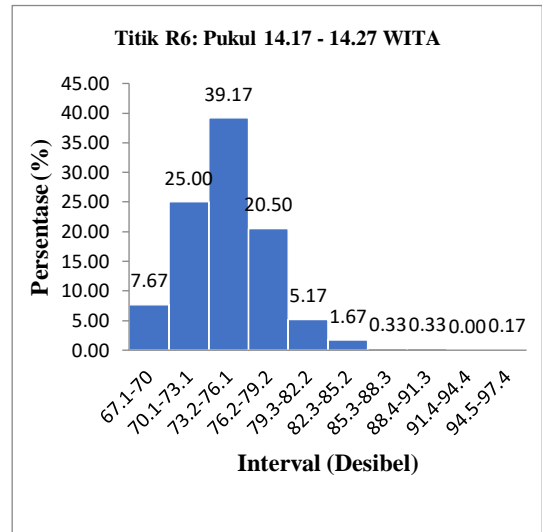
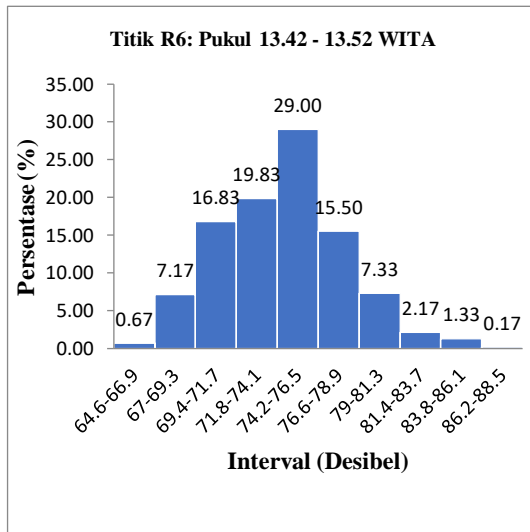


**Titik R5: Pukul 18.29 - 18.39
WITA**

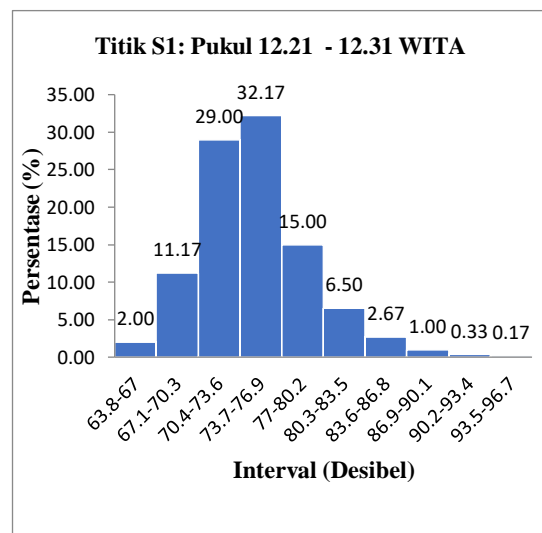
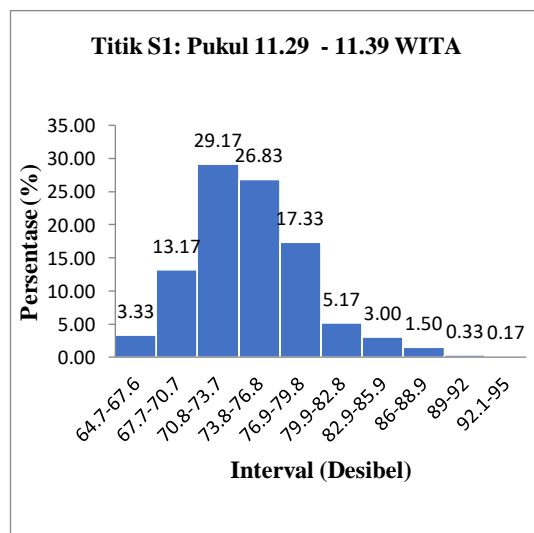
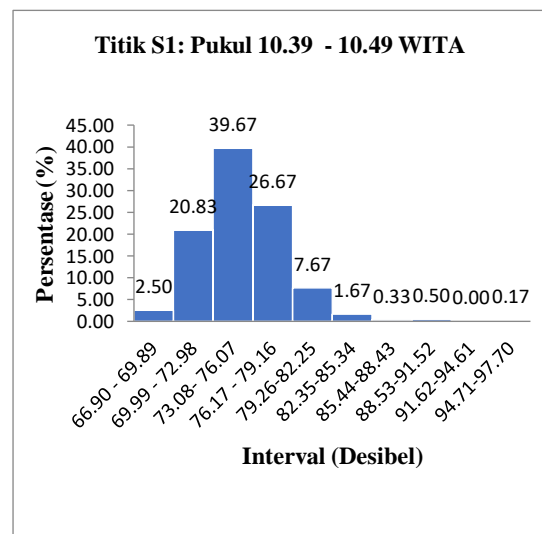
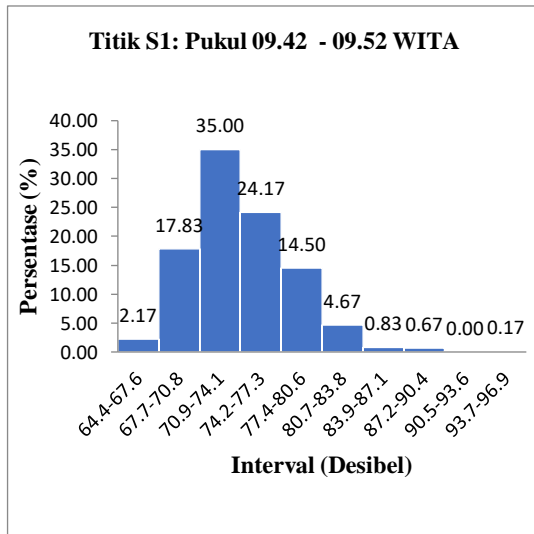
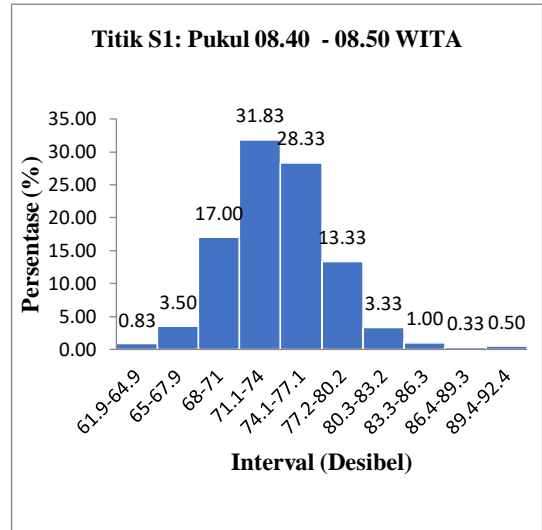
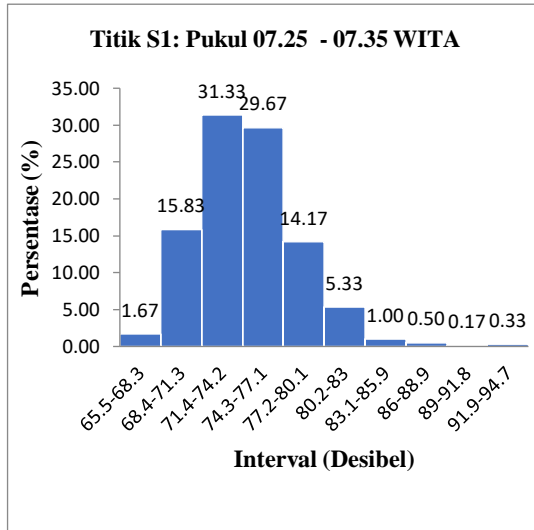


f. Titik Pengamatan R6

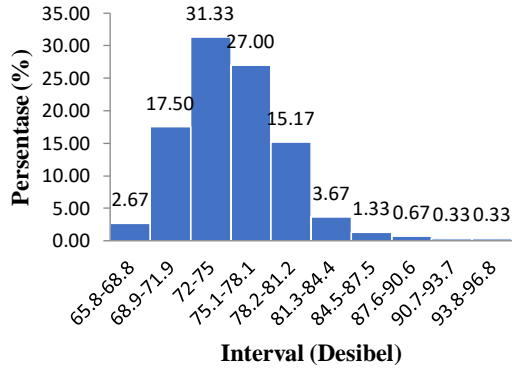




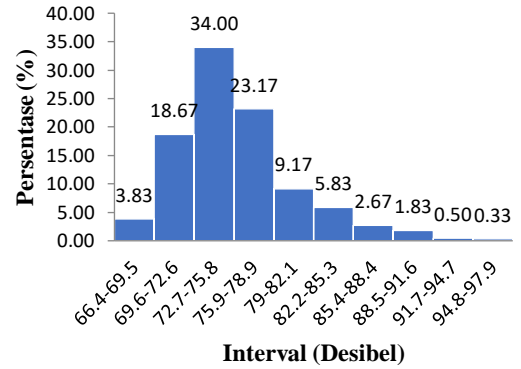
g. Titik Pengamatan S1



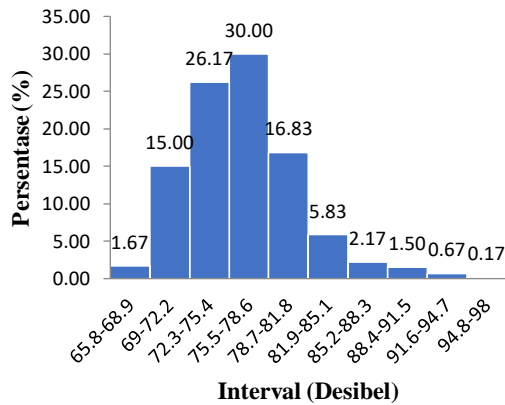
Titik S1: Pukul 13.33 - 13.43 WITA



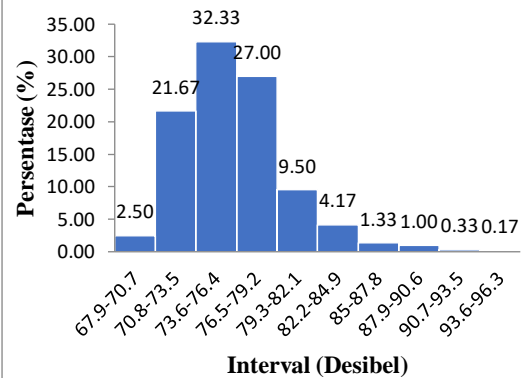
Titik S1: Pukul 14.41 - 14.51 WITA



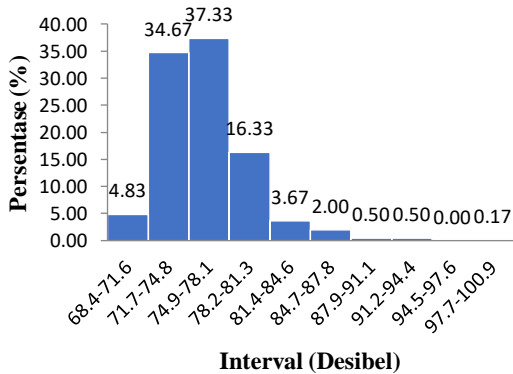
Titik S1: Pukul 15.27 - 15.37 WITA



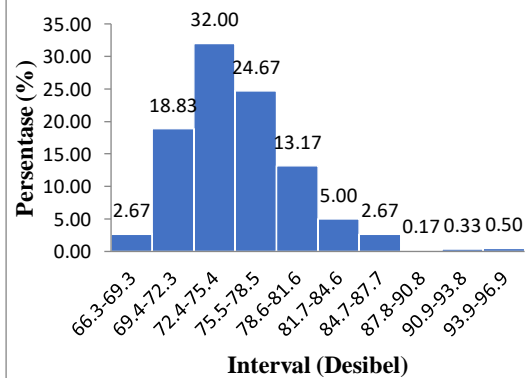
Titik S1: Pukul 16.47 - 16.57 WITA



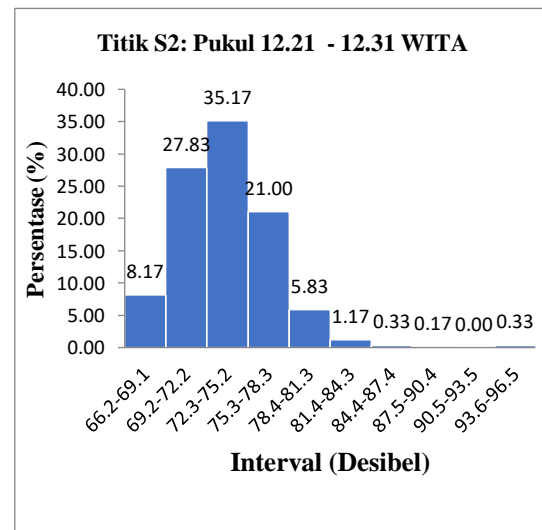
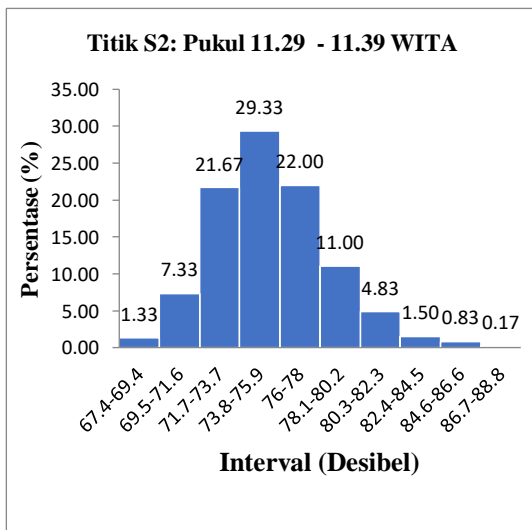
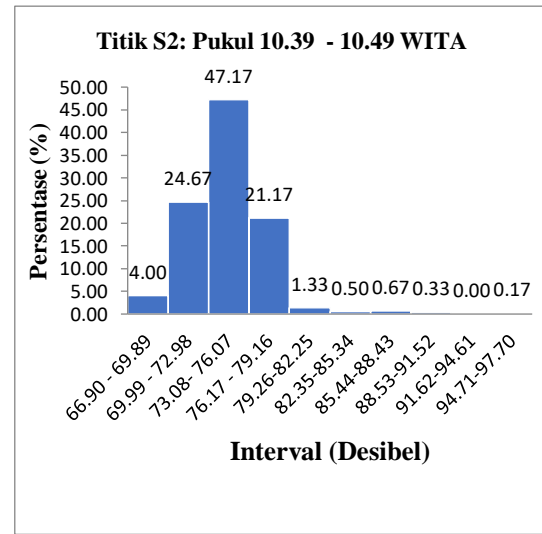
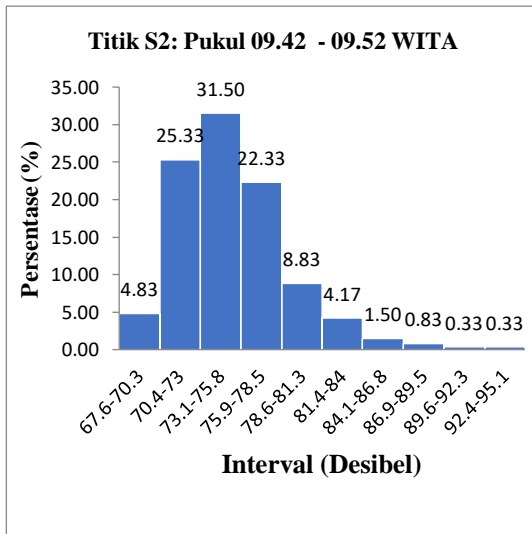
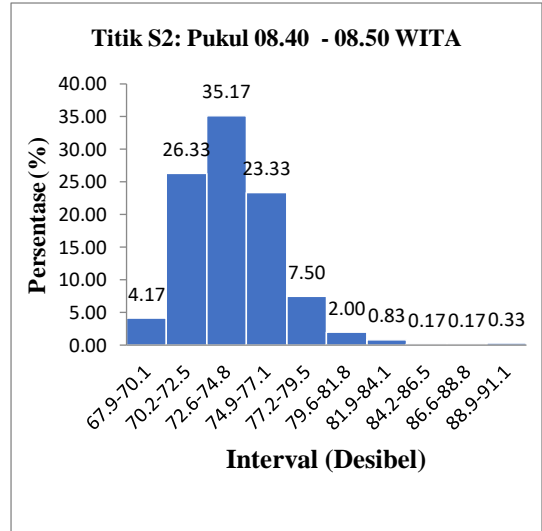
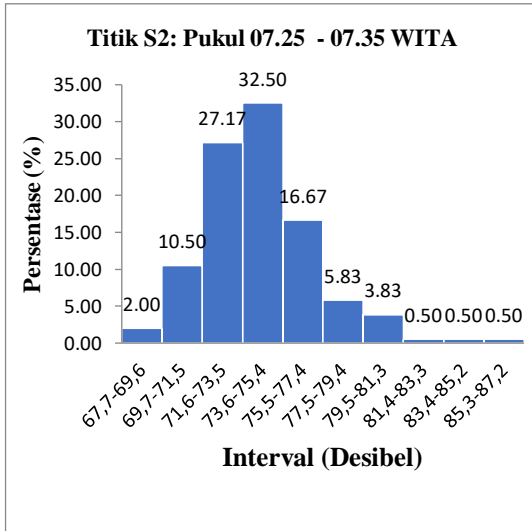
Titik S1: Pukul 17.21 - 17.31 WITA

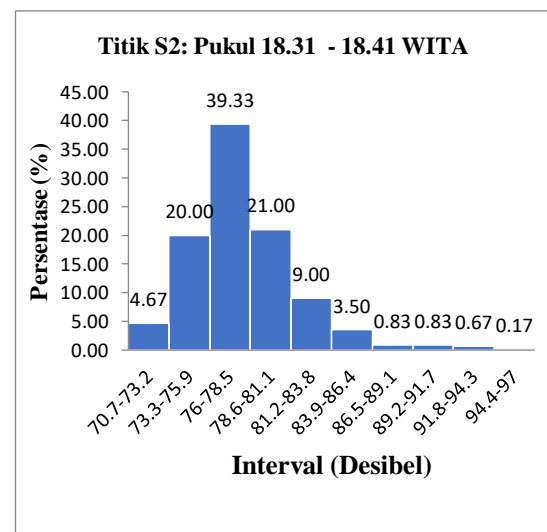
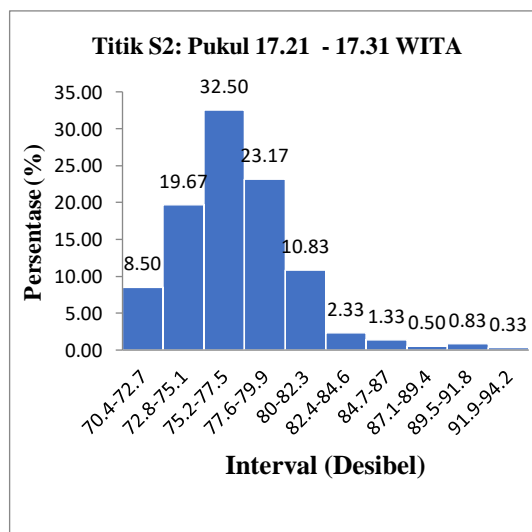
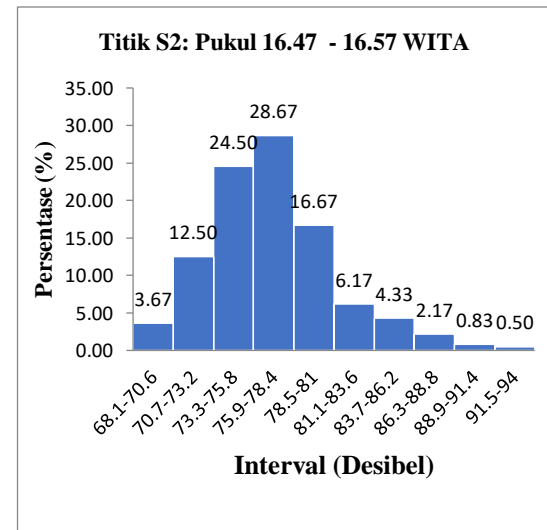
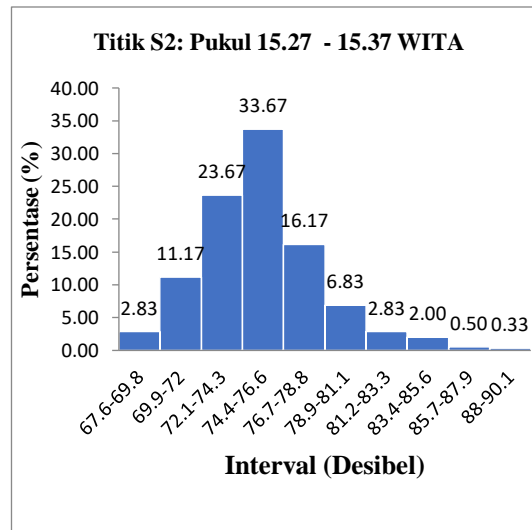
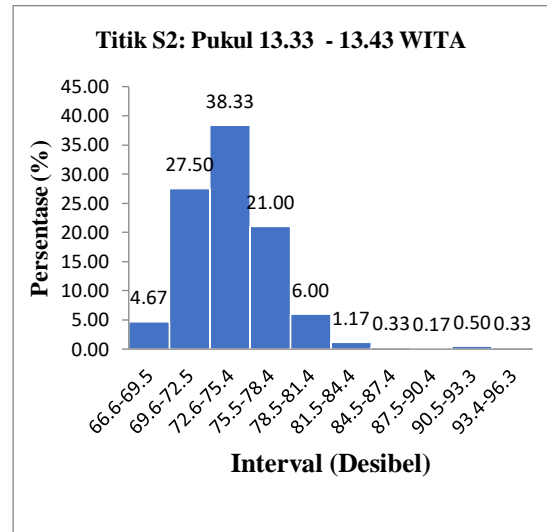
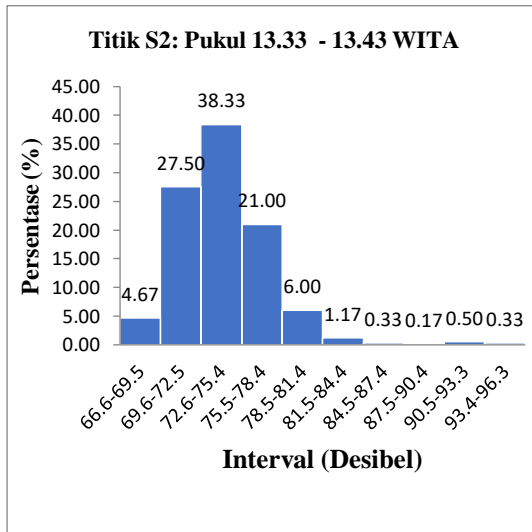


Titik S1: Pukul 18.13 - 18.23 WITA

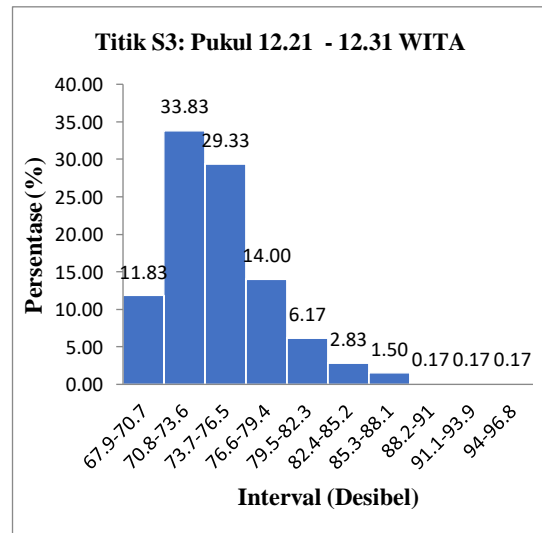
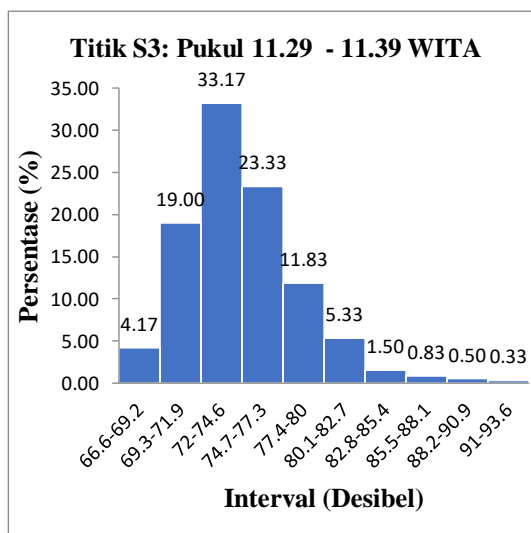
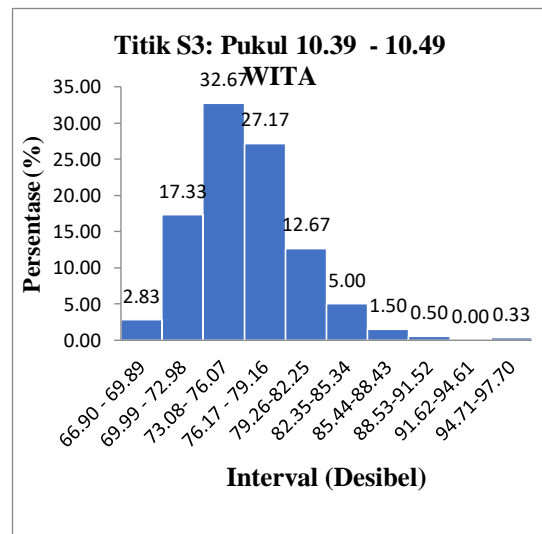
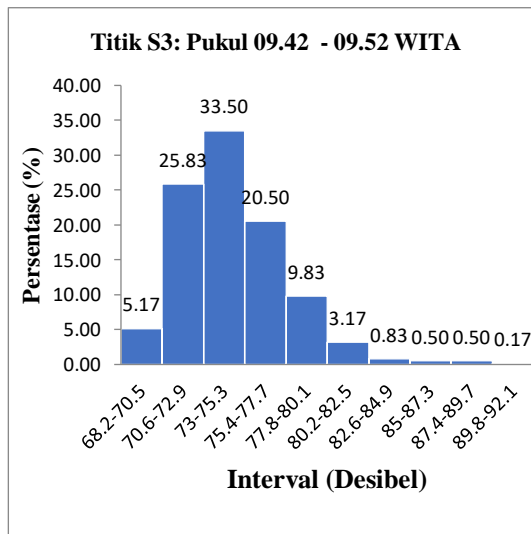
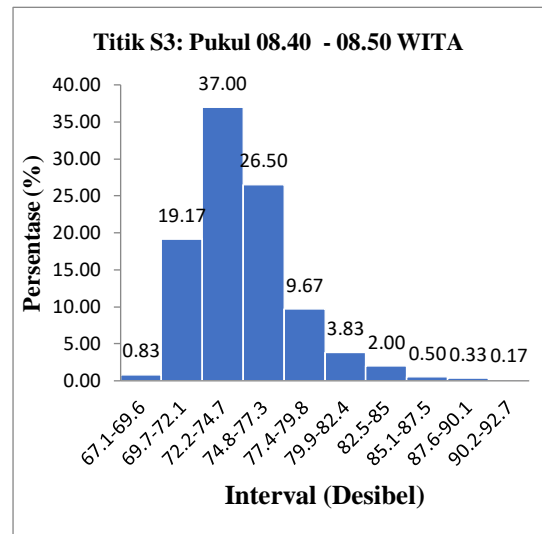
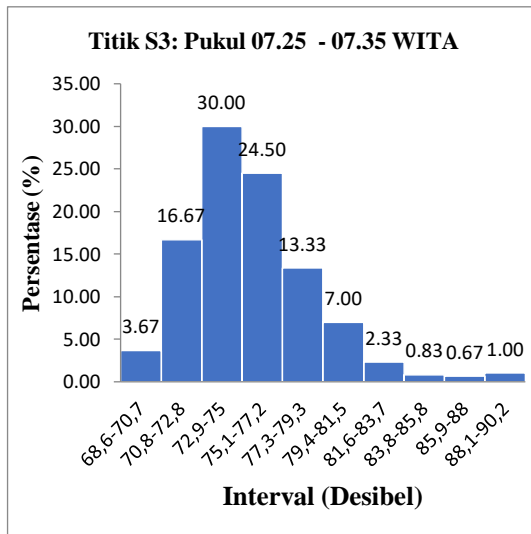


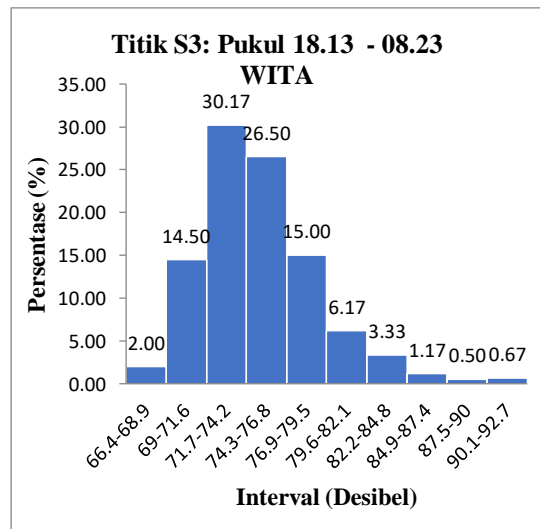
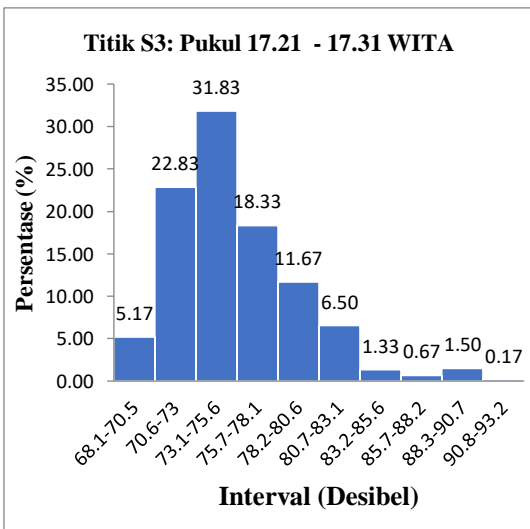
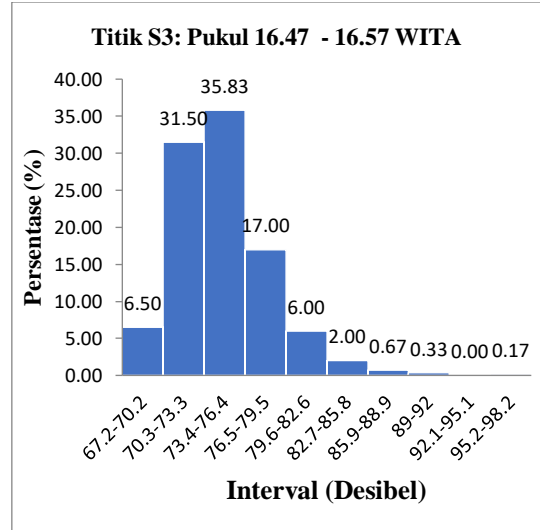
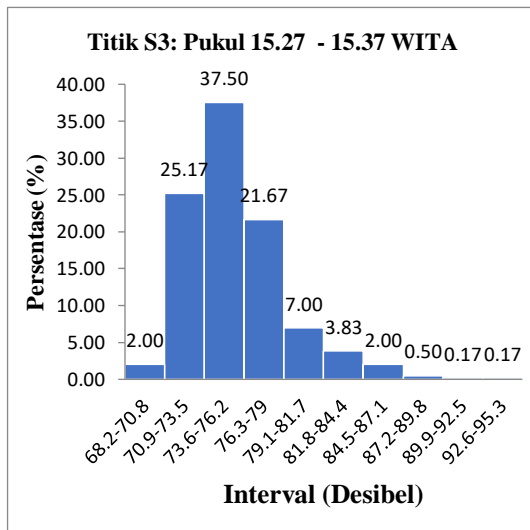
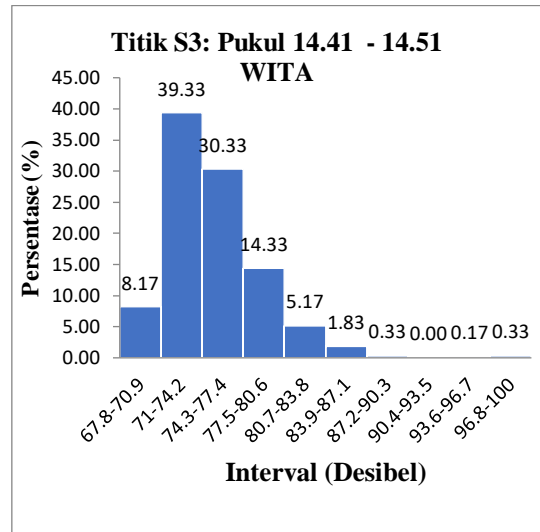
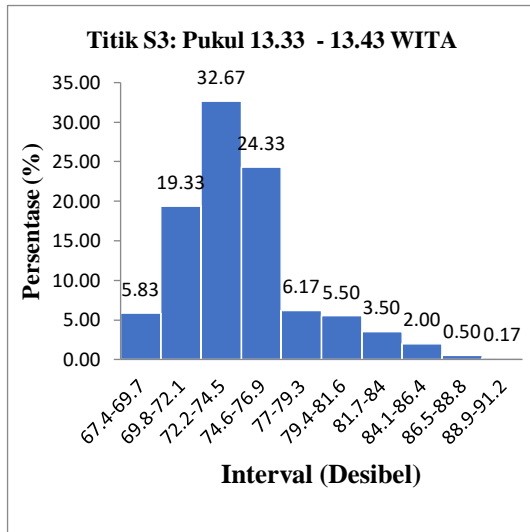
h. Titik Pengamatan S2





i. Titik Pengamatan S3





j. Titik Pengamatan S4

