

## DAFTAR PUSTAKA

- Alifiana, Lailia. 2019. Pengaruh Kegiatan Senam Irama Terhadap Perkembangan Motorik Kasar Anak Usia 5-6 Tahun Kelompok B Tk Arni Kecamatan Kaliwates Kabupaten Jember Tahun Pelajaran 2018/2019. *Skripsi*. Jember: Universitas Jember.
- Angreni. 2021. Studi Karakteristik Tingkat Kebisingan Di Jalan Tol Makassar. *Skripsi*. Gowa: Universitas Hasanuddin
- Auliyah, Rizqah Nur. 2020. Analisis Tingkat Kebisingan Pada Kawasan Kuliner Di Kota Makassar. *Skripsi*. Gowa: Universitas Hasanuddin.
- Bungawali, Nazhiifah. 2021. Analisis Karakteristik Tingkat Kebisingan pada Ruas Jalan Metro Makassar. *Skripsi*. Gowa: Universitas Hasanuddin.
- Departemen Pekerjaan Umum tentang Manual Kapasitas Jalan Indonesia tahun 1997.
- Departemen Pekerjaan Umum tentang Tata Cara Perencanaan Geometrik Jalan Antar Kota No.038 tahun 1997.
- Ekawati, Diana. 2018. Hubungan Gangguan Subjektif Kebisingan Kereta Api Terhadap Konsentrasi Belajar Siswa SD Negeri Widoro Yogyakarta. *Skripsi*. Yogyakarta: Universitas Islam Indonesia.
- Hustim, Muralia. 2019. *Bahan Ajar Bising dan Getaran Departemen Teknik Lingkungan*. Makassar: Fakultas Teknik Universitas Hasanuddin.
- Juliansyah, Muhammad. 2019. Analisis Kebisingan Akibat Lalu Lintas Pada Jalan Kolonel H Burlian Di Kota Palembang. *Skripsi*. Palembang: Universitas Sriwijaya.
- Kamus Besar Bahasa Indonesia (KBBI) Edisi Kelima. 2021. *Aplikasi Luring Resmi*.
- Lukman, Elfirah. 2018. Karakteristik Sistem Transportasi Di Sepanjang Ruas Jalan Km.0-Km.12 Kota Sorong. *Jurnal*.

- Maha Putra, I Gede Putu. 2018. Hubungan Usia, Masa Kerja Dan Penggunaan Sumbat Telinga Dengan Keluhan Subyektif Pekerja. *Skripsi*. Denpasar: Politeknik Kesehatan Kemenkes Denpasar.
- Marisdayana, R., et al., 2016. *Hubungan Intensitas Paparan Bising Dan Masa Kerja Dengan Gangguan Pendengaran Pada Karyawan PT. X*. Jurnal Kesehatan Lingkungan Indonesia. JKLI 15 (1), 2016, 22 – 27.
- Mariza, Intan Putri. 2021. Analisis Tingkat Kebisingan Akibat Lalu Lintas Pada Jalan Tol Palembang-Indralaya. *Skripsi*. Palembang: Universitas Sriwijaya.
- Nathanael, Yonathan dan Sufren. 2013. Mahir Menggunakan SPSS Secara Otodidak. Jakarta: Gramedia.
- Pedoman Perhitungan Kapasitas Jalan Peraturan Umum No. 13 Tahun 2003 mengenai Batas Maksimum dan Minimum Nilai L10 dan LAeq.
- Peraturan Menteri Ketenagakerjaan Nomor 5 Tahun 2018 tentang Keselamatan dan Kesehatan Kerja Lingkungan Kerja.
- Peraturan Pemerintah No 34 Tahun 2006 Tentang Jalan.
- Raharjo, S. 2014. Cara Uji Normalitas Shapiro-Wilk dengan SPSS Lengkap. Diunduh dari <https://www.spssindonesia.com/2015/05/cara-uji-normalitasshapiro-wilk-dengan.html>
- Rahman, Muhummmad Fajar. 2021. Analisis Tingkat Kebisingan Lalu Lintas Kendaraan Bermotor Dan Kereta Api Serta Rekomendasi Mitigasi (Studi Kasus: SD Negeri 001 Merdeka Kota Bandung). *Skripsi*. Bandung: Institut Teknologi Nasional.
- Surat Edaran Menteri Tenaga Kerja, Transmigrasi dan Koperasi No. SE-01/MEN/1978 tentang Nilai Ambang Batas.
- Undang Undang Republik Indonesia Nomor 22 Tahun 2009 tentang Lalu Lintas dan Angkutan Jalan.

Wahyuni, Femy. 2021. Studi Tingkat Kebisingan Pada Kawasan Di Sekitar Jalur Jalan (*Frontage*) Tol Makassar. *Skripsi*. Gowa: Universitas Hasanuddin

## Lampiran 1. Dokumentasi Pengambilan Data

- Titik Pengamatan R1



- Titik Pengamatan R2



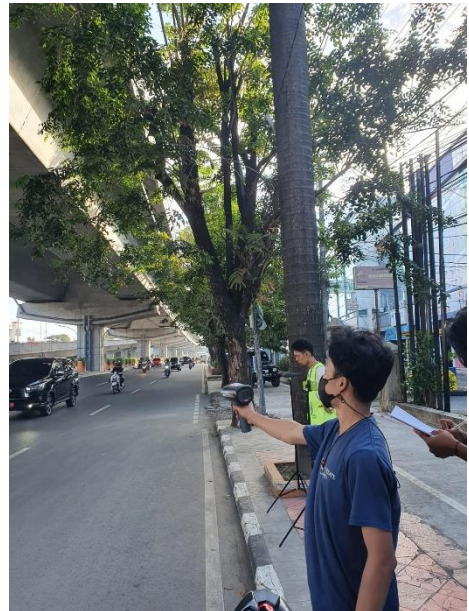
- Titik Pengamatan R3



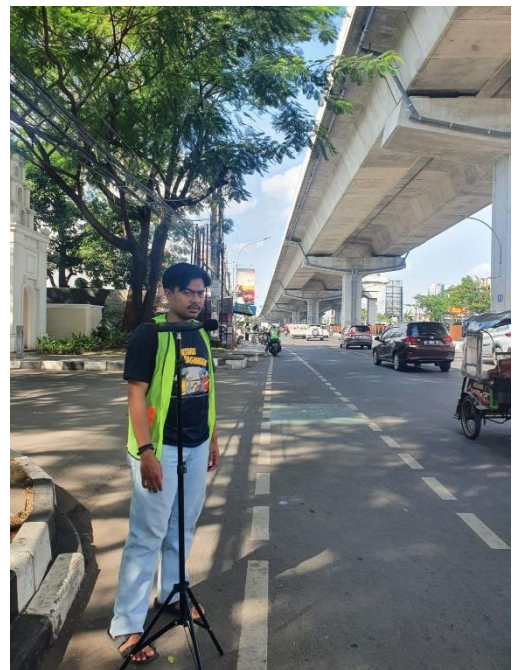
- Titik Pengamatan R4



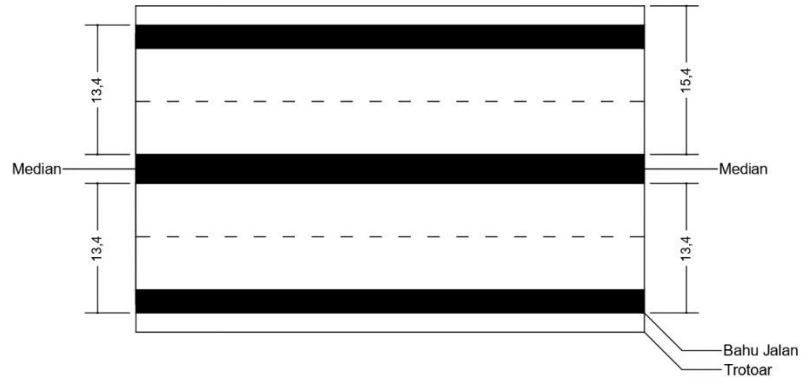
- Titik Pengamatan R5



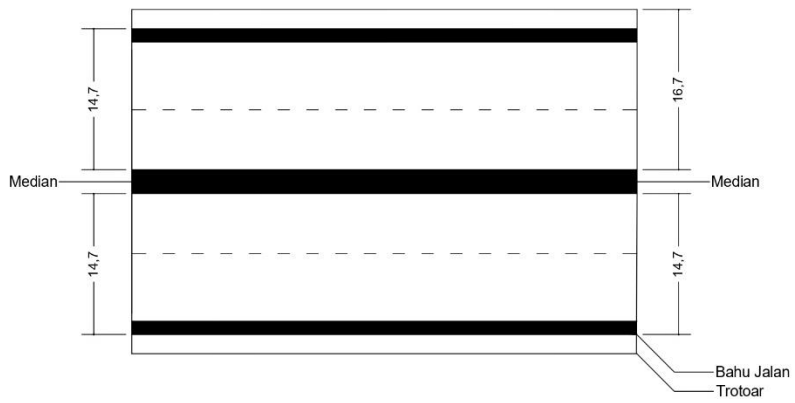
- Titik Pengamatan R6



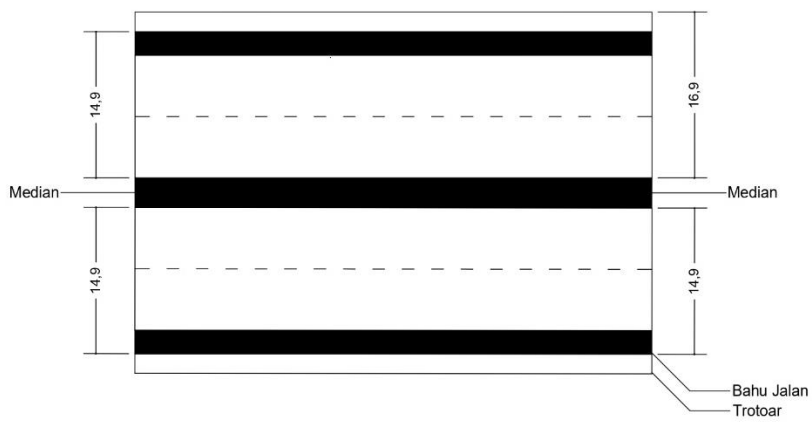
## Lampiran 2. Layout untuk Tiap Titik Pengamatan



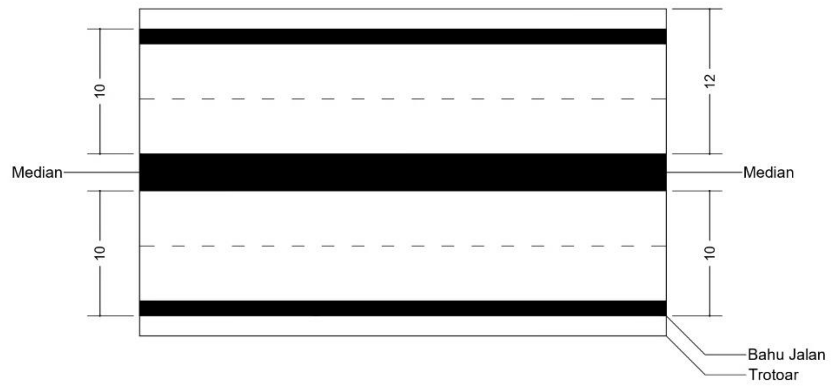
Titik Pengamatan R1



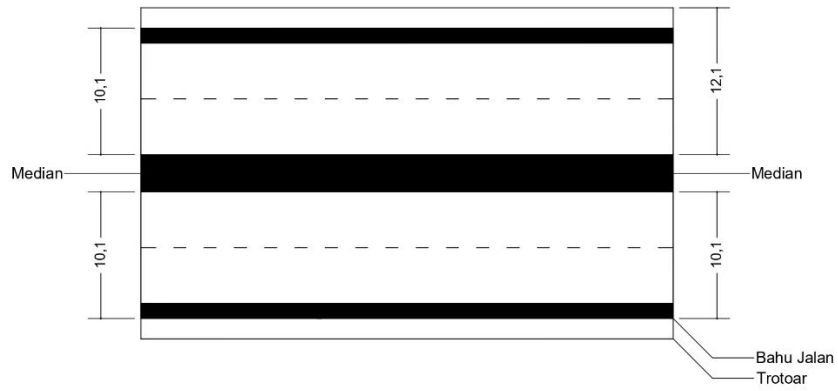
Titik Pengamatan R2



Titik Pengamatan R3



Titik Pengamatan R4



Titik Pengamatan R5

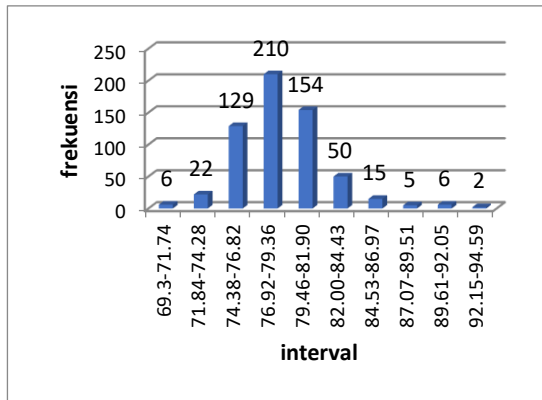


Titik Pengamatan R6

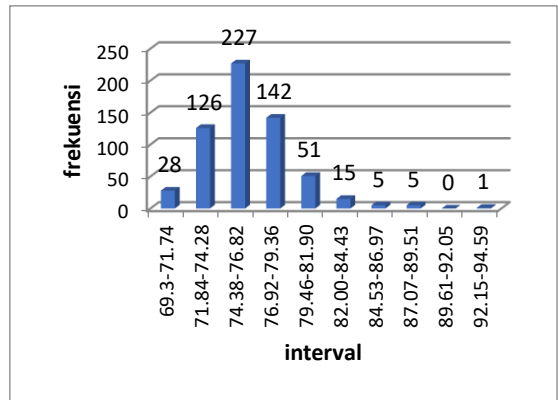


### Lampiran 3. Histogram Distribusi Tingkat Kebisingan

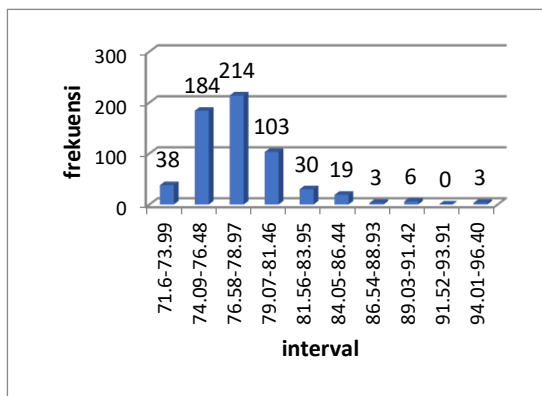
#### a. Titik Pengamatan R1



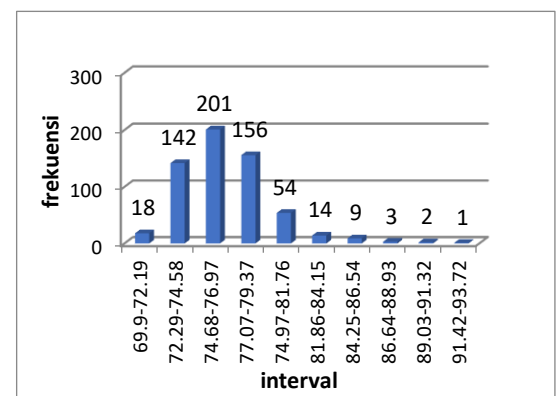
Pukul 07.00-07.10 WITA



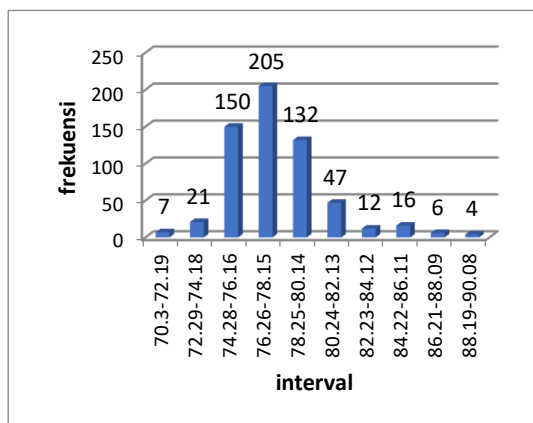
Pukul 08.00-08.10 WITA



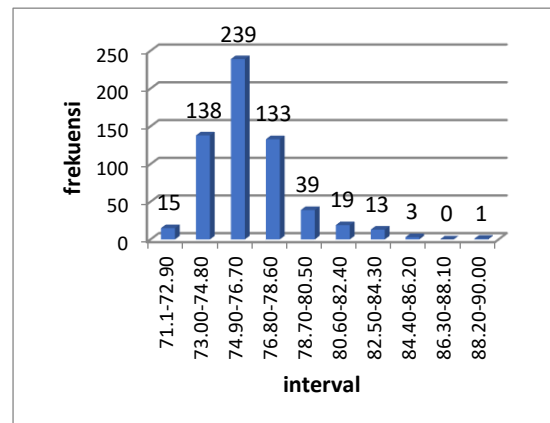
Pukul 09.00-09.10 WITA



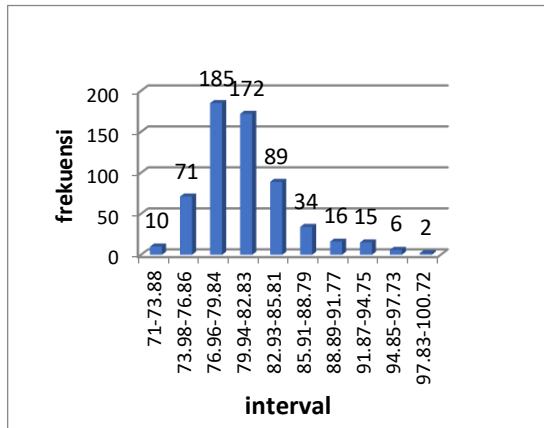
Pukul 10.00-10.10 WITA



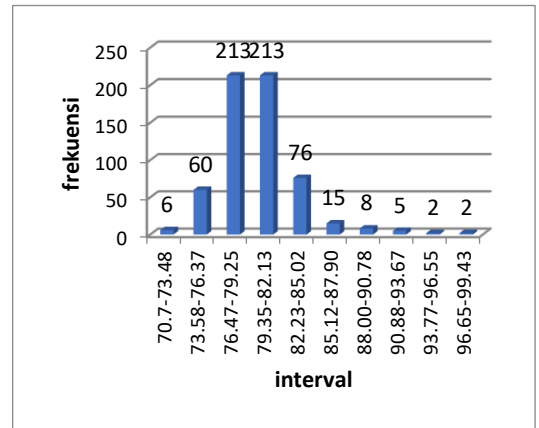
Pukul 11.00-11.10 WITA



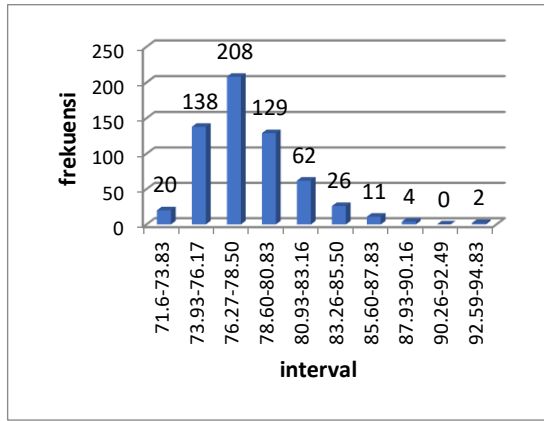
Pukul 12.00-12.10 WITA



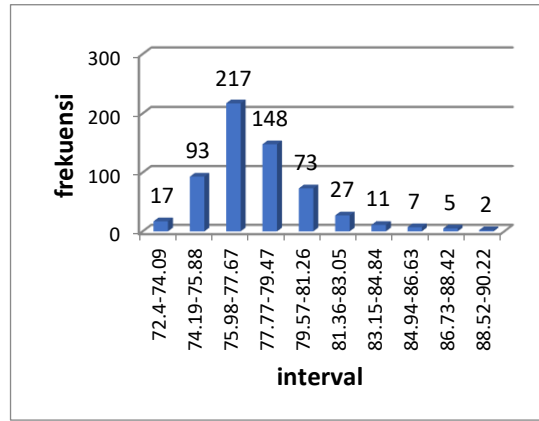
Pukul 13.00-13.10 WITA



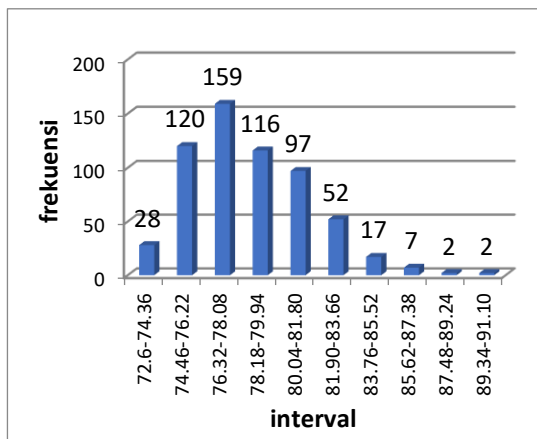
Pukul 14.00-14.10 WITA



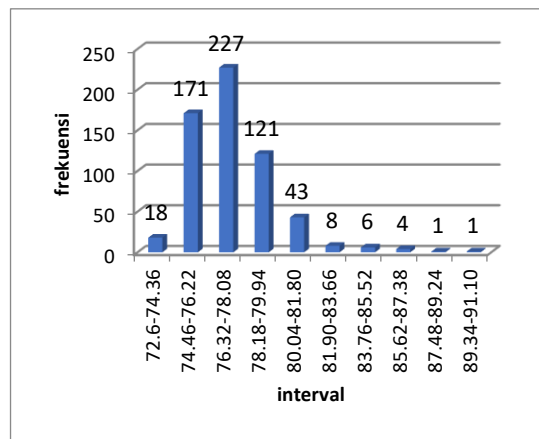
Pukul 15.00-15.10 WITA



Pukul 16.00-16.10 WITA

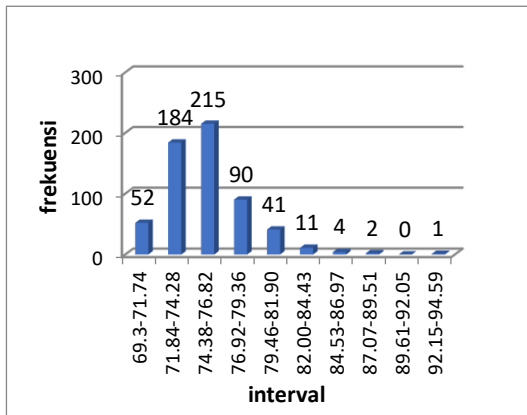


Pukul 17.00-17.10 WITA

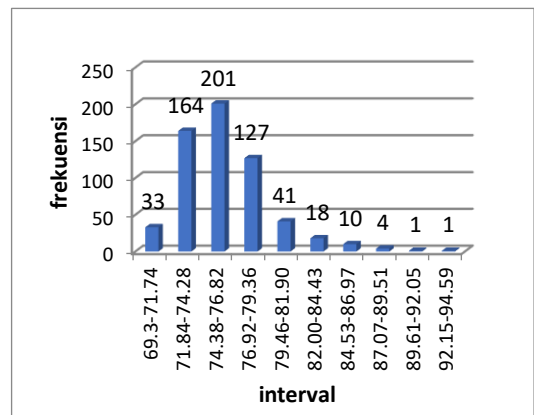


Pukul 18.00-18.10 WITA

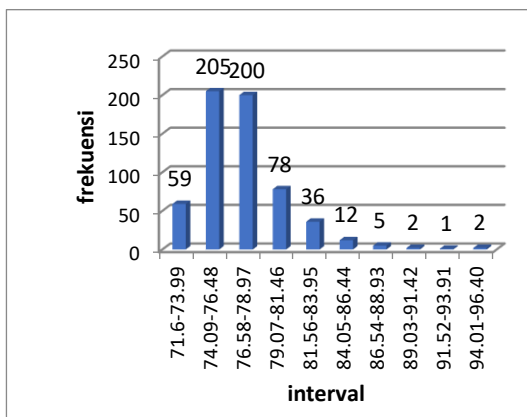
b. Titik Pengamatan R2



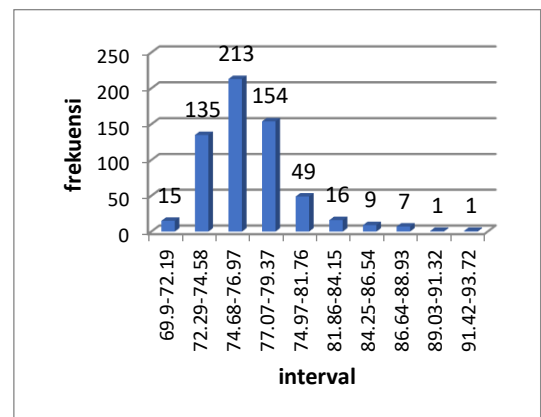
Pukul 07.00-07.10 WITA



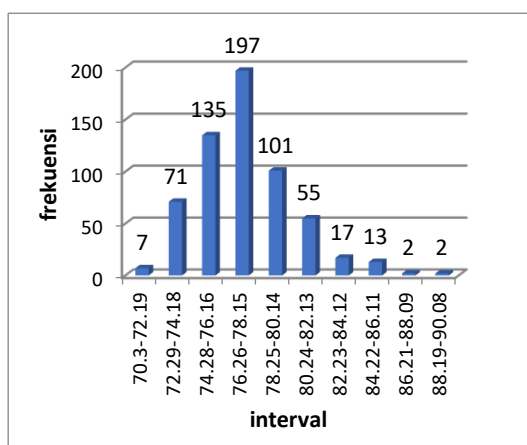
Pukul 08.00-08.10 WITA



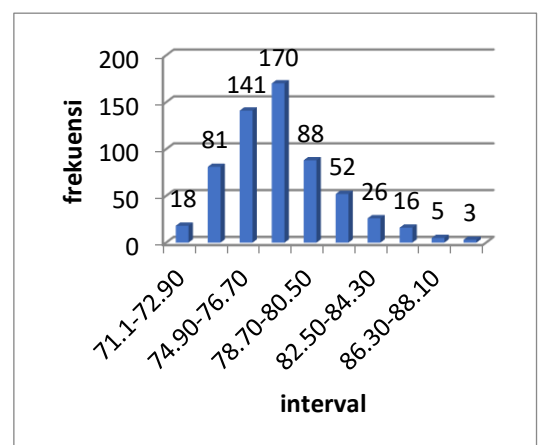
Pukul 09.00-09.10 WITA



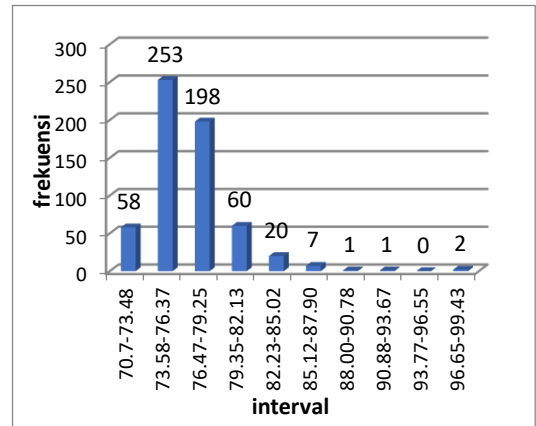
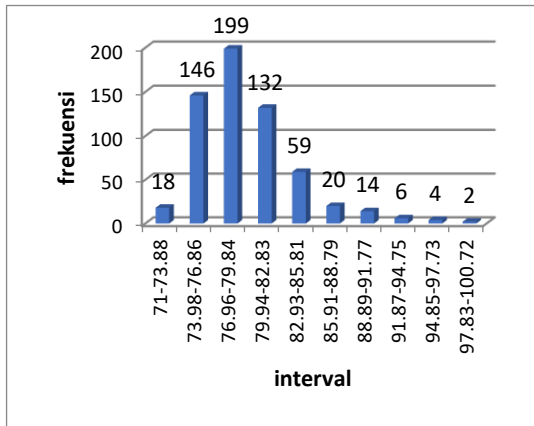
Pukul 10.00-10.10 WITA



Pukul 11.00-11.10 WITA

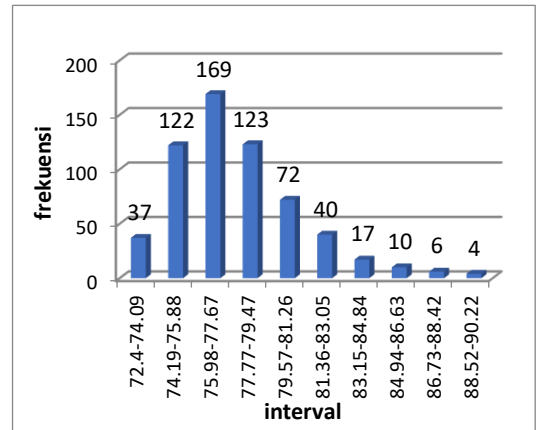
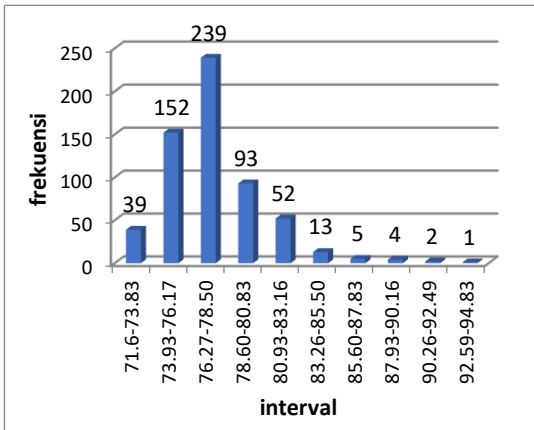


Pukul 12.00-12.10 WITA



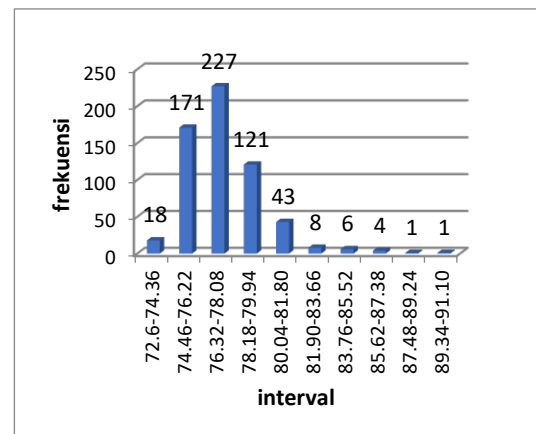
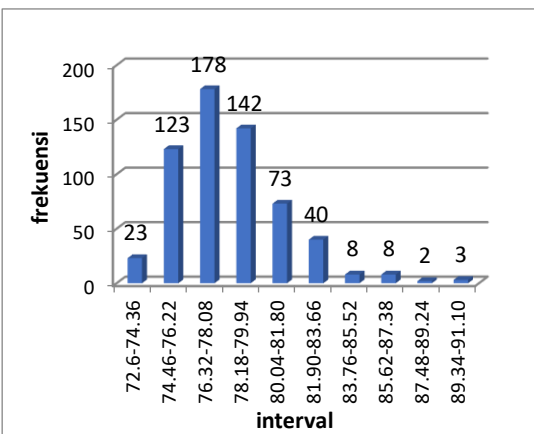
Pukul 13.00-13.10 WITA

Pukul 14.00-14.10 WITA



Pukul 15.00-15.10 WITA

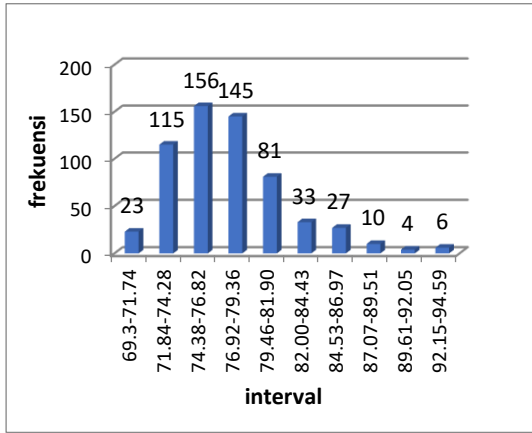
Pukul 16.00-16.10 WITA



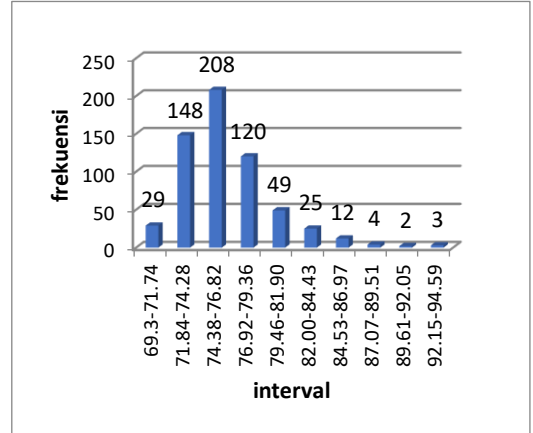
Pukul 17.00-17.10 WITA

Pukul 18.00-18.10 WITA

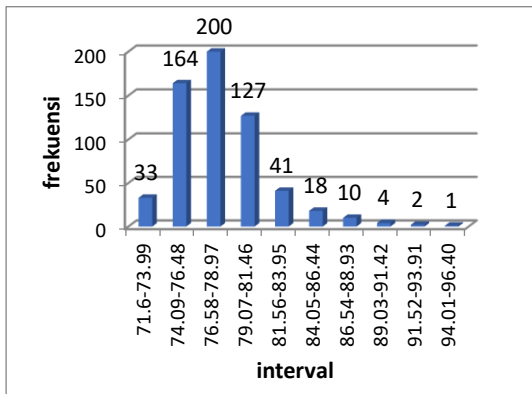
c. Titik Pengamatan R3



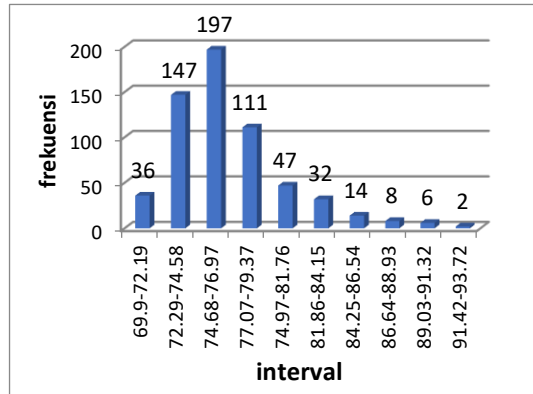
Pukul 07.00-07.10 WITA



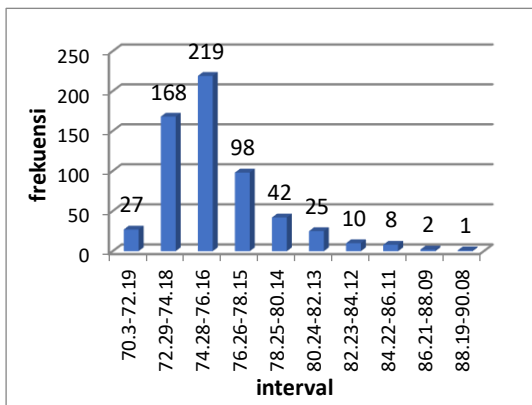
Pukul 08.00-08.10 WITA



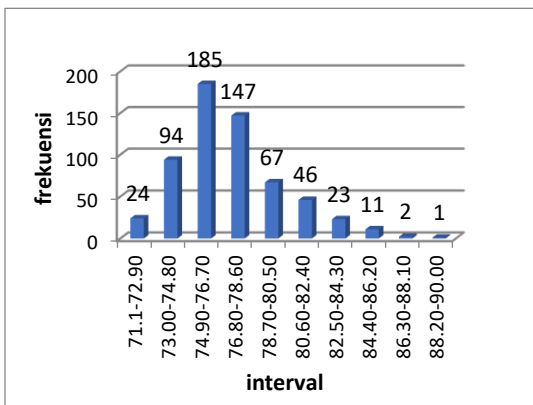
Pukul 09.00-09.10 WITA



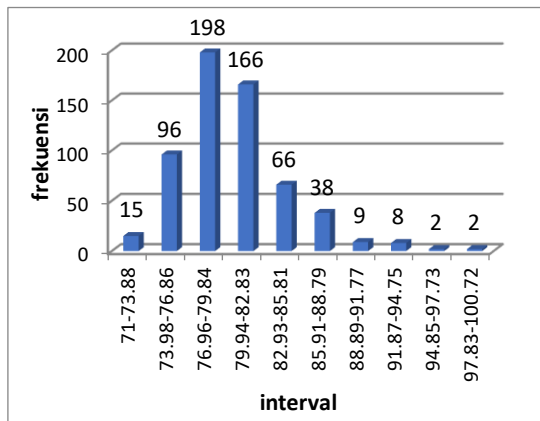
Pukul 10.00-10.10 WITA



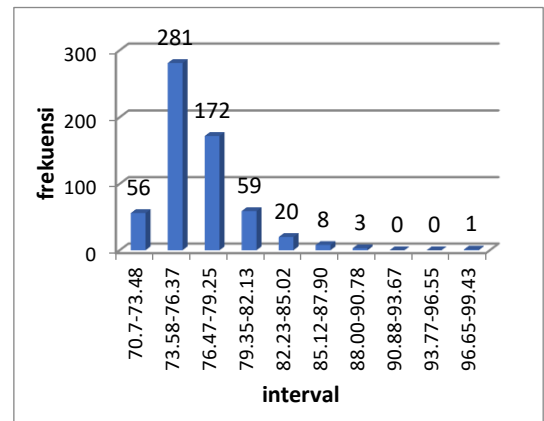
Pukul 11.00-11.10 WITA



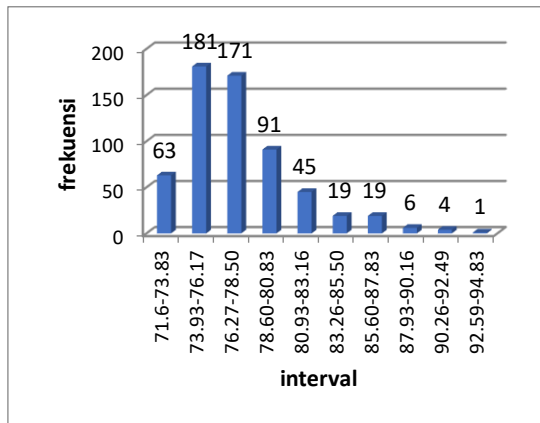
Pukul 12.00-12.10 WITA



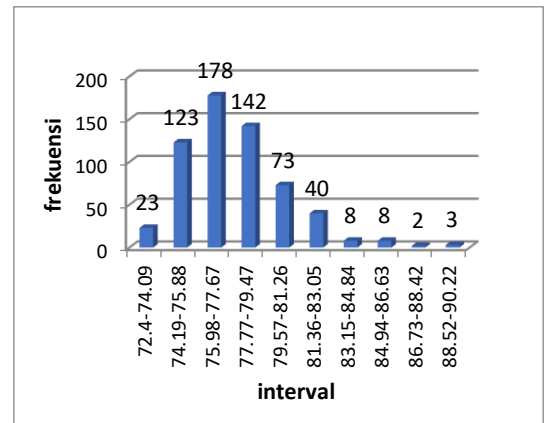
Pukul 13.00-13.10 WITA



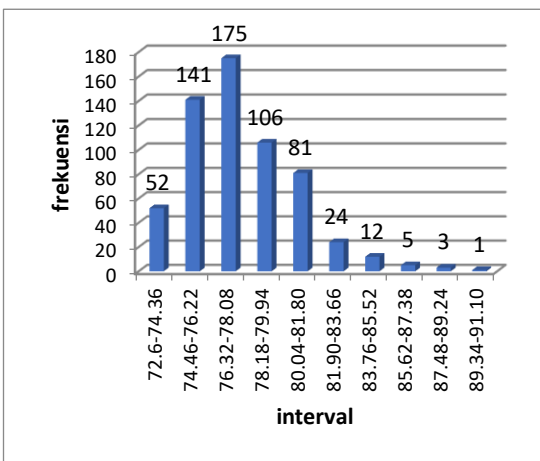
Pukul 14.00-14.10 WITA



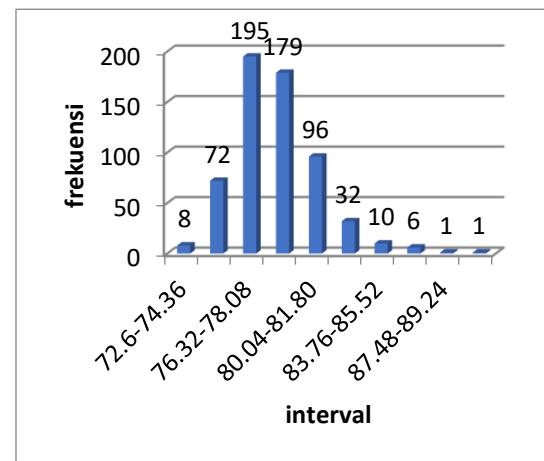
Pukul 15.00-15.10 WITA



Pukul 16.00-16.10 WITA

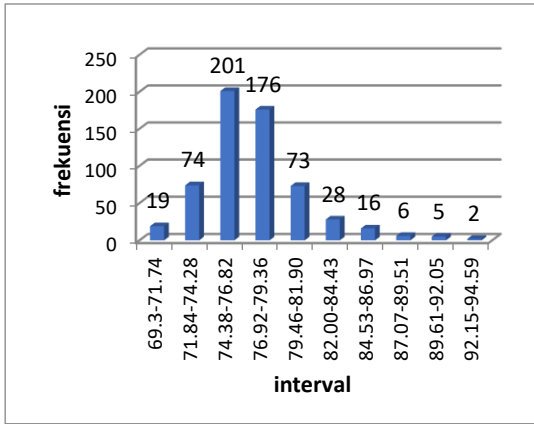


Pukul 17.00-17.10 WITA

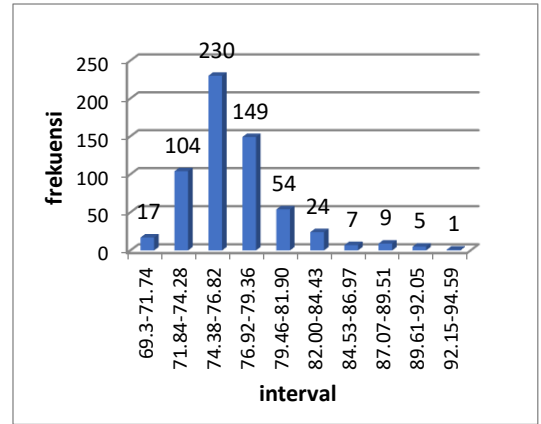


Pukul 18.00-18.10 WITA

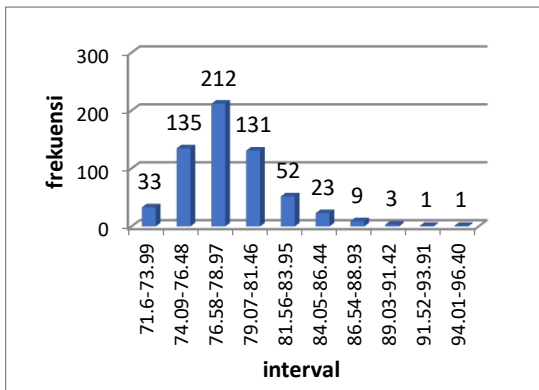
d. Titik Pengamatan R4



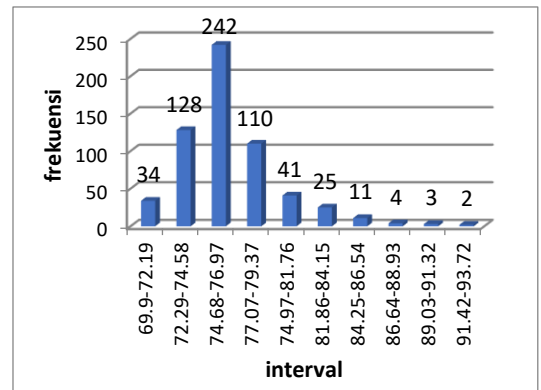
Pukul 07.00-07.10 WITA



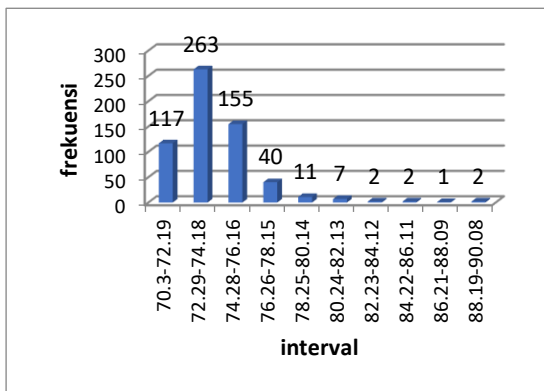
Pukul 08.00-08.10 WITA



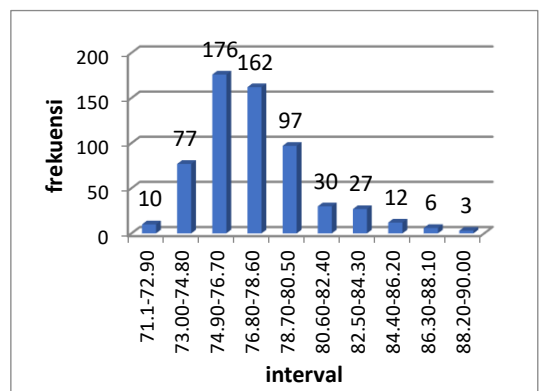
Pukul 09.00-09.10 WITA



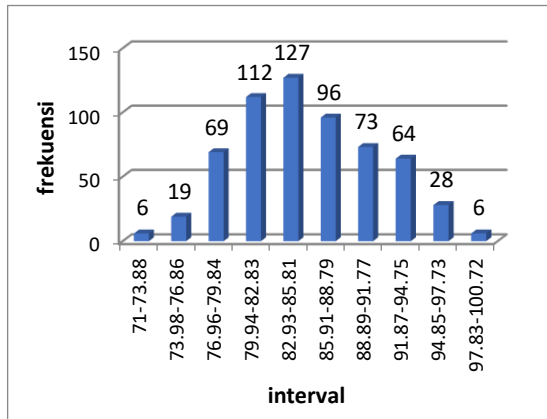
Pukul 10.00-10.10 WITA



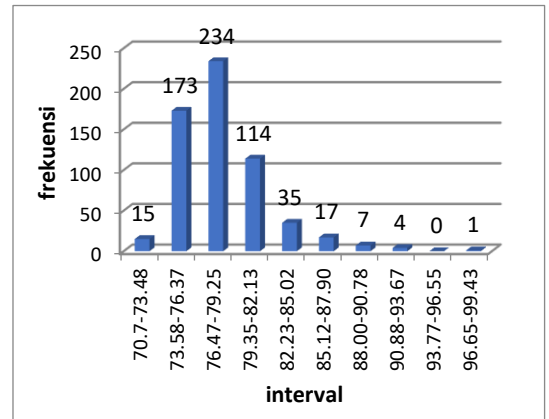
Pukul 11.00-11.10 WITA



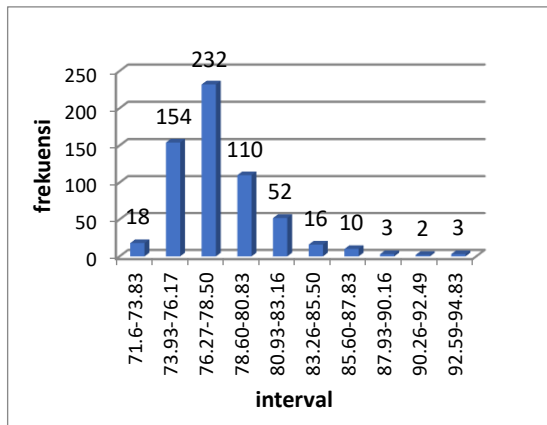
Pukul 12.00-12.10 WITA



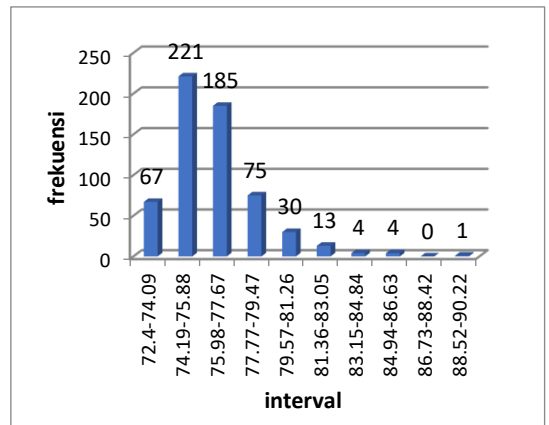
Pukul 13.00-13.10 WITA



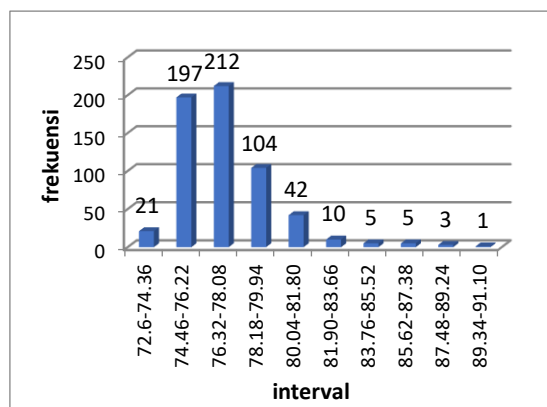
Pukul 14.00-14.10 WITA



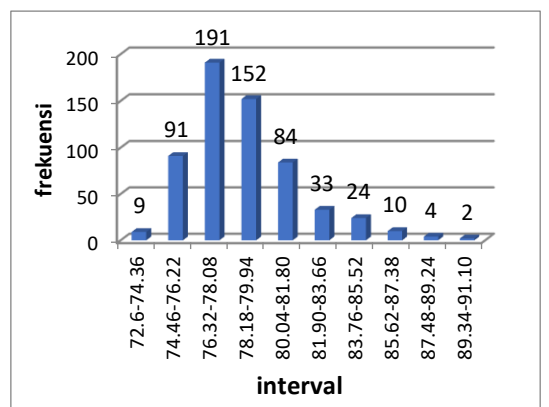
Pukul 15.00-15.10 WITA



Pukul 16.00-16.10 WITA



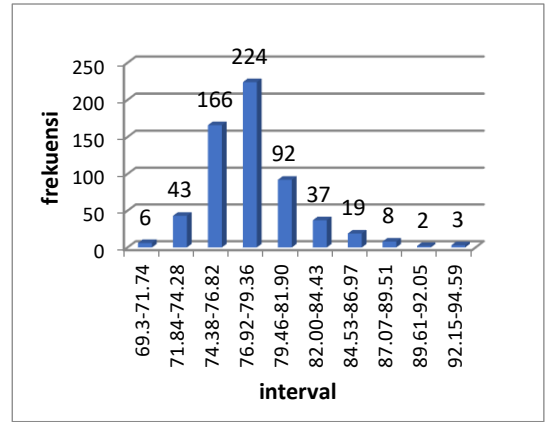
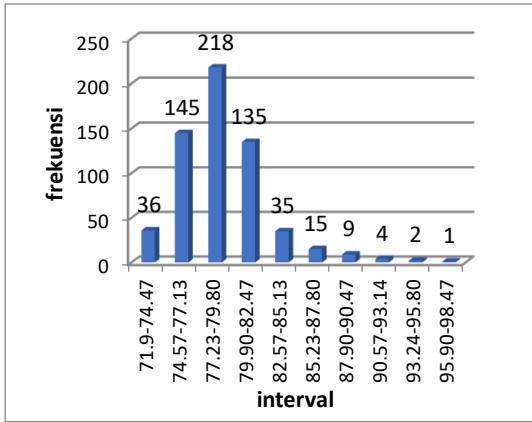
Pukul 17.00-17.10 WITA



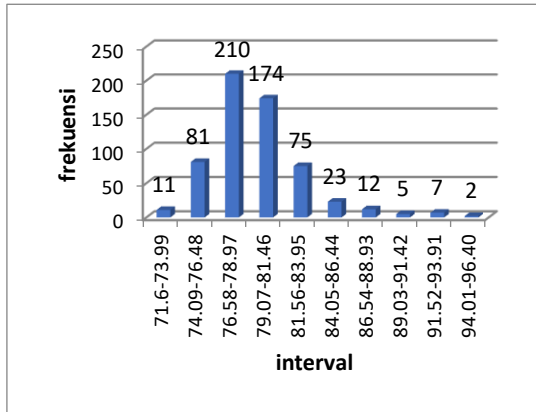
Pukul 18.00-18.10 WITA



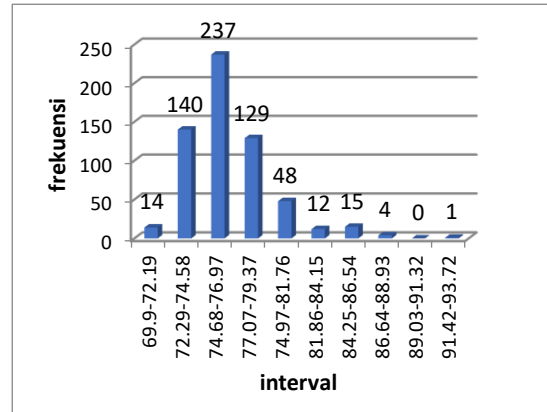
e. Titik Pengamatan R5



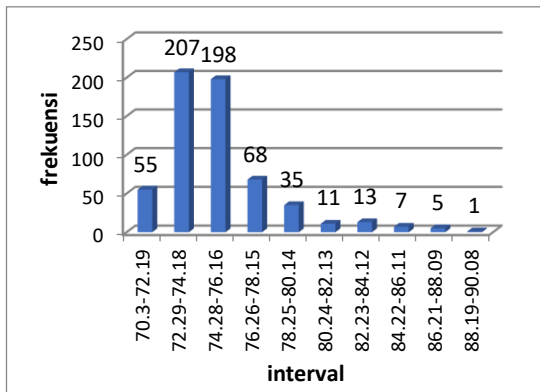
Pukul 07.00-07.10 WITA



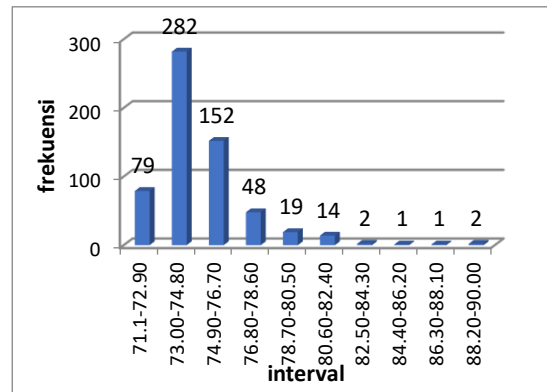
Pukul 08.00-08.10 WITA



Pukul 09.00-09.10 WITA

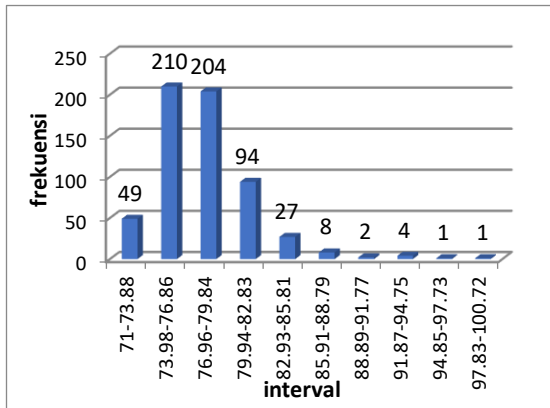


Pukul 10.00-10.10 WITA

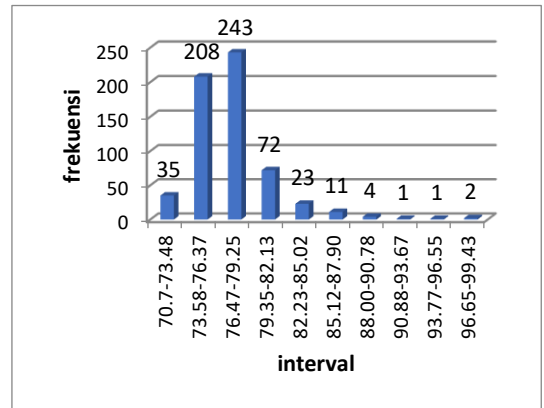


Pukul 11.00-11.10 WITA

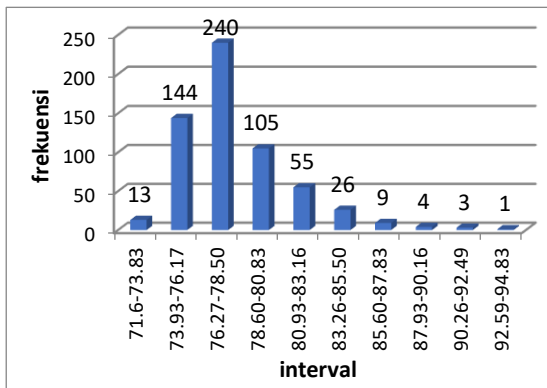
Pukul 12.00-12.10 WITA



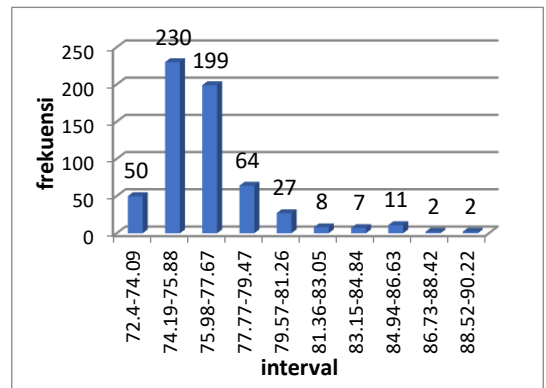
Pukul 13.00-13.10 WITA



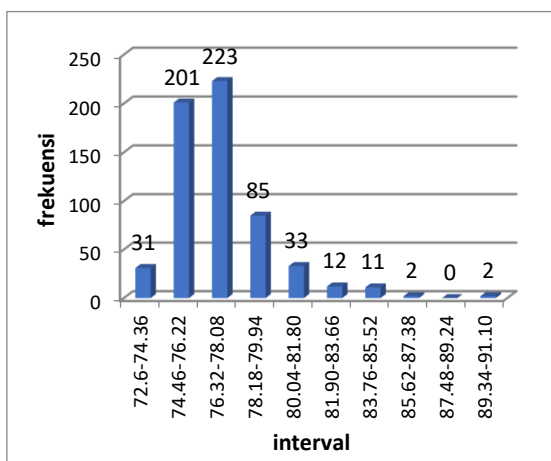
Pukul 14.00-14.10 WITA



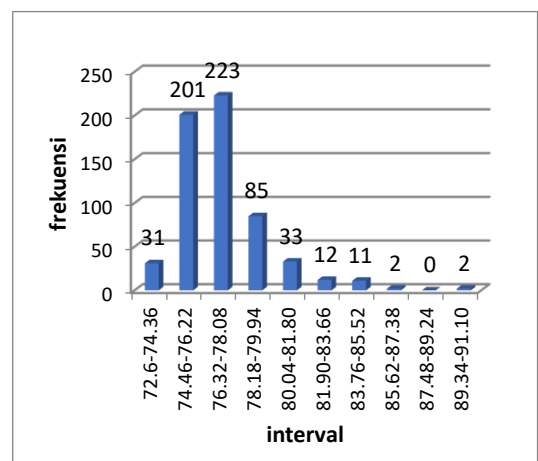
Pukul 15.00-15.10 WITA



Pukul 16.00-16.10 WITA

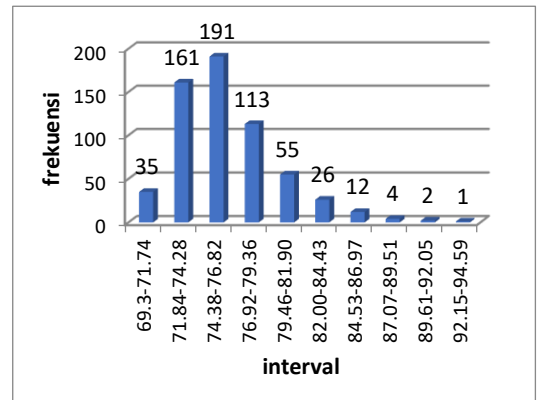
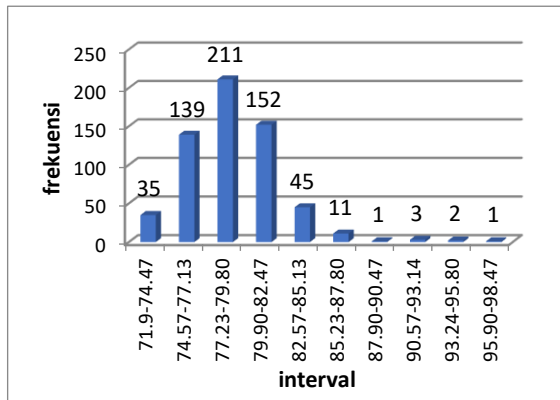


Pukul 17.00-17.10 WITA

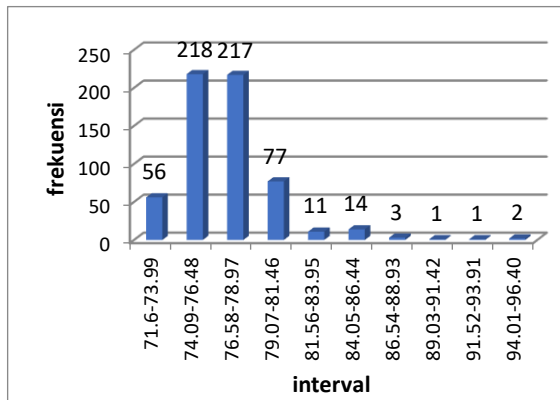


Pukul 18.00-18.10 WITA

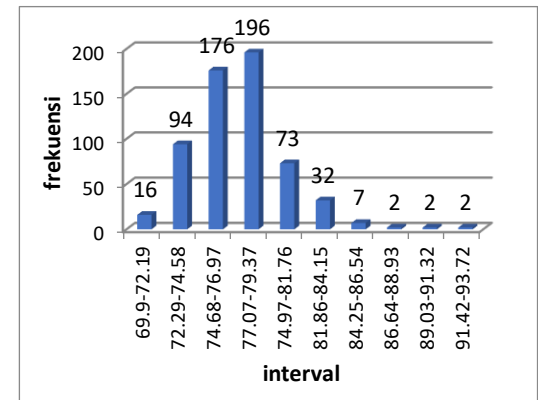
f. Titik Pengamatan R6



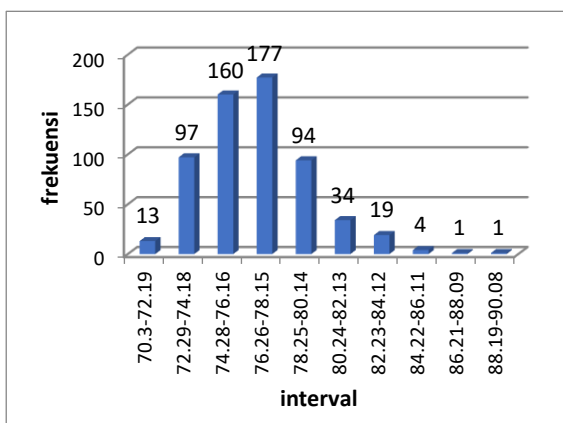
Pukul 07.00-07.10 WITA



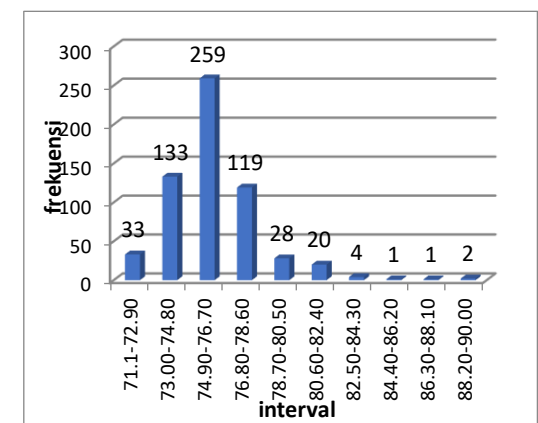
Pukul 08.00-08.10 WITA



Pukul 09.00-09.10 WITA

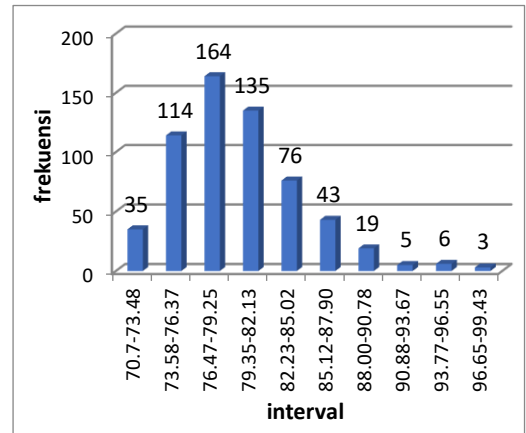
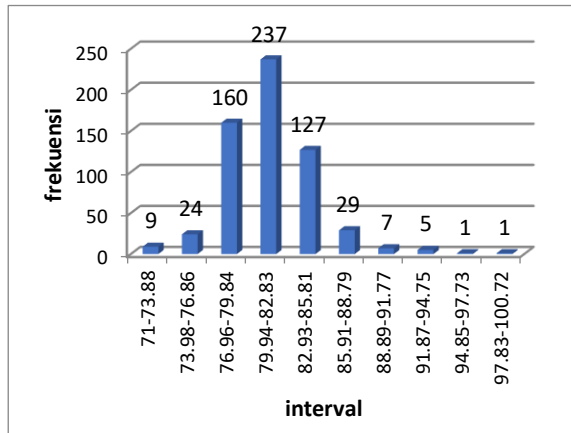


Pukul 10.00-10.10 WITA



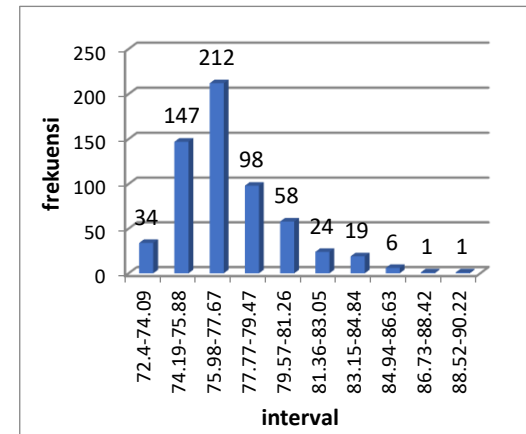
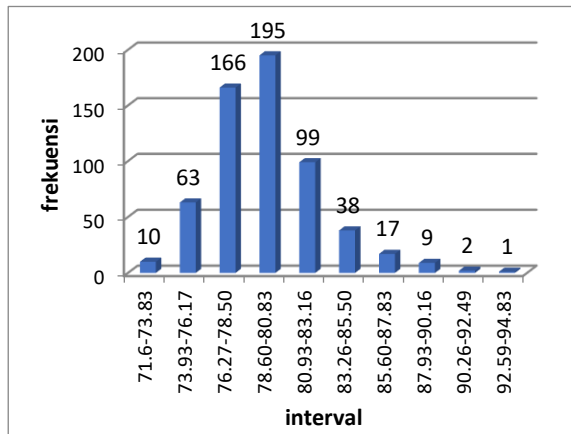
Pukul 11.00-11.10 WITA

Pukul 12.00-12.10 WITA



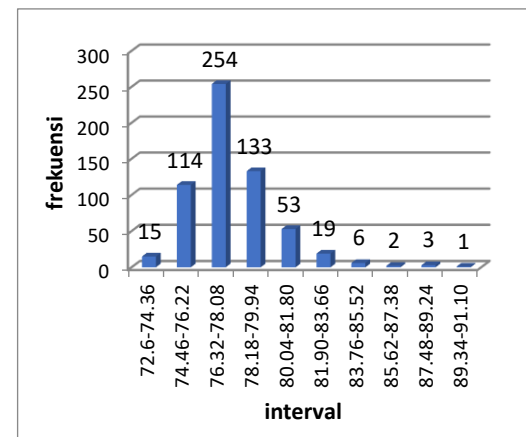
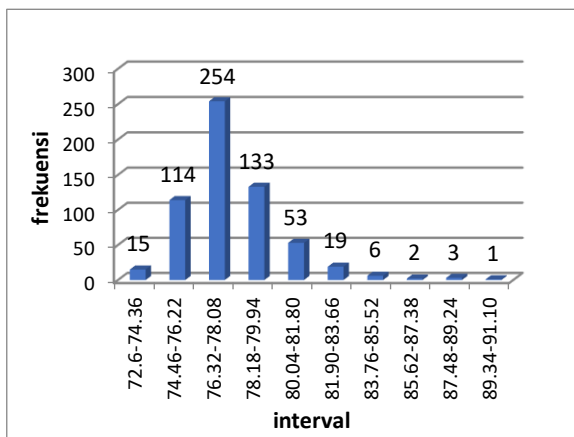
Pukul 13.00-13.10 WITA

Pukul 14.00-14.10 WITA



Pukul 15.00-15.10 WITA

Pukul 16.00-16.10 WITA



Pukul 17.00-17.10 WITA

Pukul 18.00-18.10 WITA