

DAFTAR PUSTAKA

- Aini, A. N., Anwar, I. F., Sufanir, A. M. S., & Astor, Y. 2018. Survei Dan Pemetaan Zona Kebisingan Arus Lalu Lintas Pada Kawasan RSUP Dr Hasan Sadikin Bandung. *Potensi: Jurnal Sipil Politeknik*, 20(1).
- Anggraeni, Dewi., Supono, M. Rifai. 2017. Pengaruh U –Turn (Putar Balik Arah) Terhadap Kinerja Arus Lalu – Lintas Ruas Jalan Abepura Kota Jayapura. *Portal Sipil*. Volume 6 No.1 Juni 2017.
- Departemen Permukiman dan Prasarana Wilayah. 2004. *Perencanaan Median Jalan. Pedoman Konstruksi dan Bangunan. Pd-T-17-2004-B*. Departemen Permukiman dan Prasarana Wilayah.
- Direktorat Jenderal Bina Marga. 1997. Manual Kapasitas Jalan Indonesia. Departemen Pekerjaan Umum Republik Indonesia. Jakarta.
- Direktorat Jenderal Bina Marga. 2005. Pedoman Perencanaan Putaran Balik (*U-Turn*). *No.06/BM/2005*. Departemen Pekerjaan Umum Republik Indonesia. Jakarta.
- Direktorat Jenderal Bina Marga. 1997. Tata Cara Perencanaan Geometrik Jalan Antar Kota. *No.038/TBM/1997*. Departemen Pekerjaan Umum.
- Ekawati, Diana. 2018. Hubungan Gangguan Subjektif Kebisingan Kereta Api Terhadap Konsentrasi Belajar Siswa Sd Negeri Widoro Yogyakarta. *Skripsi*. Depok: Universitas Islam Indonesia.
-
- Fatinah, Siti Khusnun. 2021. Analisis Tingkat Kebisingan Pada Jalan Arteri Bermedian Kota Makassar. *Skripsi* Gowa: Universitas Hasanuddin.
- Kadir, Andi Iin Nindy Karlinda. 2017. Model Prediksi Kebisingan Lalu Lintas Heterogen Berbasis Model ASJ-RTN 2008 Untuk Tipe Jalan 4/2 UD. *Skripsi*. Gowa: Universitas Hasanuddin.

- Kanoena, Marcelino Ivan. 2018. Analisis Pengaruh Fasilitas *U-Turn* Terhadap Kinerja Ruas Jalan (Studi Kasus : *U-Turn* Jl Laksda Adisucipto – Depan Babarsari Junction). *Skripsi*. Yogyakarta: Universitas Atma Jaya.
-
- Kementrian Lingkungan Hidup Republik Indonesia. Keputusan Menteri Negara Lingkungan Hidup. No. 48 Tahun 1996 Tentang Baku Mutu Tingkat Kebisingan.
- Laboratorium Kualitas Udara dan Bising Departemen Teknik Lingkungan Fakultas Teknik Universitas Hasanuddin. 2021. Penuntun Praktikum Bising. Makassar: Fakultas Teknik Universitas Hasanuddin.
- Mahmud, Ariyanty Kusmawaty R.. 2017. Model Prediksi Kebisingan Lalu Lintas Heterogen Berbasis Model ASJ-RTN 2008 Untuk Lingkungan Jalan Utama-Komersial. *Skripsi*. Gowa: Universitas Hasanuddin.
- Marisdayana, Rara., Suhartono., Nurjazuli. 2016. Hubungan Intensitas Paparan Bising Dan Masa Kerja Dengan Gangguan Pendengaran Pada Karyawan PT. X. *Jurnal Kesehatan Lingkungan Indonesia*. JKLI 15 (1), 2016, 22 – 27.
- Pedoman Perhitungan Kapasitas Jalan Peraturan Umum No. 13 Tahun 2003 mengenai Batas Maksimum dan Minimum Nilai L10 dan LAeq.
- Peraturan Gubernur Provinsi DIY No. 40 Tahun 2017 Tentang Baku Tingkat Kebisingan
- Pratama, Satria Artha., Permatasari, Rita Intan. 2021. Pengaruh Penerapan Standar Operasional Prosedur Dan Kompetensi Terhadap Produktivitas Kerja Karyawan Divisi Ekspor PT. Dua Kuda Indonesia. *Jurnal Ilmiah M-Progress*. Vol.11, No. 1, Januari 2021
- Ramli, Yesmi Rahmadani. 2017. Model Prediksi Kebisingan Lalu Lintas Heterogen Berbasis Model ASJ-RTN 2008 Untuk Tipe Jalan 4/2 D. *Skripsi*. Gowa: Universitas Hasanuddin.

- Rohani., Hasyim., Hidayatullah, M. Dilan. 2022. Evaluasi Kinerja Ruas Jalan Dan Simpang Tidak Bersinyal Dengan Fasilitas Putar Balik (*U-Turn*) Studi Kasus Jalan Sriwijaya Di Kota Mataram. *Jurnal Ganec Swara*. Vol. 16, No.1, Maret 2022.
- Syafruddin, Nurul Azizah. 2019. Analisis Tingkat Kebisingan Lalu Lintas Pada Jalur Putar Balik Arah (PBA). *Skripsi*. Gowa: Universitas Hasanuddin.
- Setiawan, Agung. 2017. Prediksi Tingkat Kebisingan Lalu Lintas Heterogen Berbasis Sistem Informasi Geografis. *Skripsi*. Gowa: Universitas Hasanuddin.
- Undang-Undang Republik Indonesia Nomor 22 Tahun 2009 Tentang Lalu Lintas dan Angkutan Jalan.
- Undang-Undang Republik Indonesia Nomor 38 Tahun 2004 Tentang Jalan.
- Utari, Annisa. 2018. Pengaruh Gerak U-Turn Pada Bukaan Median Terhadap Karakteristik Arus Lalu Lintas Di Ruas Jalan Kota Medan (Studi Kasus). *Skripsi*. Medan: Universitas Muhammadiyah Sumatera Utara.
- Wahyuni, Femy. 2021. Studi Tingkat Kebisingan Pada Kawasan Di Sekitar Jalur Jalan (Frontage) Tol Makassar. *Skripsi*. Gowa: Universitas Hasanuddin.
- Wedagama, Dewa Made P., dkk. 2022. Analisis Kebisingan Arus Lalu Lintas Di Luar Dan Di Dalam Ruangan Pada Kawasan Simpang Lima Sunset Road. *Jurnal Spektran*. Vol. 10, No. 1, Januari 2022, Hal. 11 – 20.
- Wibowo, Indah Tiara. 2020. Panjang Antrian Akibat Penutupan Pintu Palang Perlintasan Kereta Api Di Jalan Laswi Kota Bandung. *Skripsi*. Bandung: Institut Teknologi Nasional.

Lampiran 1. Dokumentasi Lokasi dan Pengambilan Data

- Titik Pengamatan PBA 1



- Titik Pengamatan PBA 2



- Titik Pengamatan PBA 3



- Titik Pengamatan PBA 4



- Titik Pengamatan PBA 5



- Titik Pengamatan PBA 6



- Titik Pengamatan PBA 7



- Titik Pengamatan PBA 8

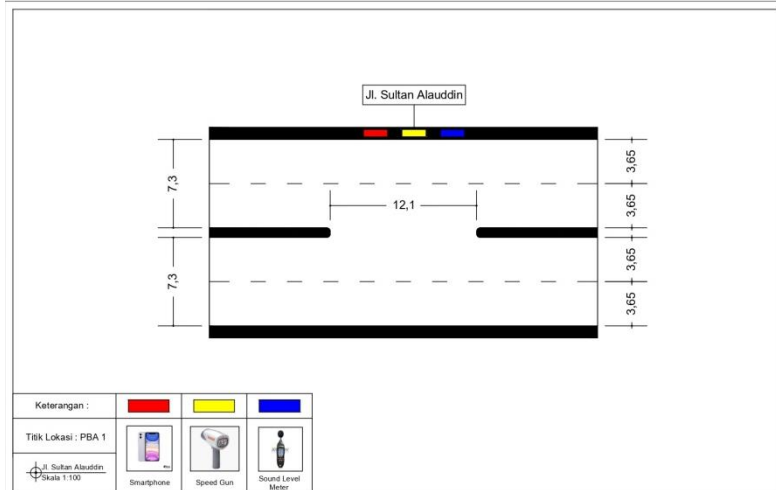


- Titik Pengamatan PBA 9

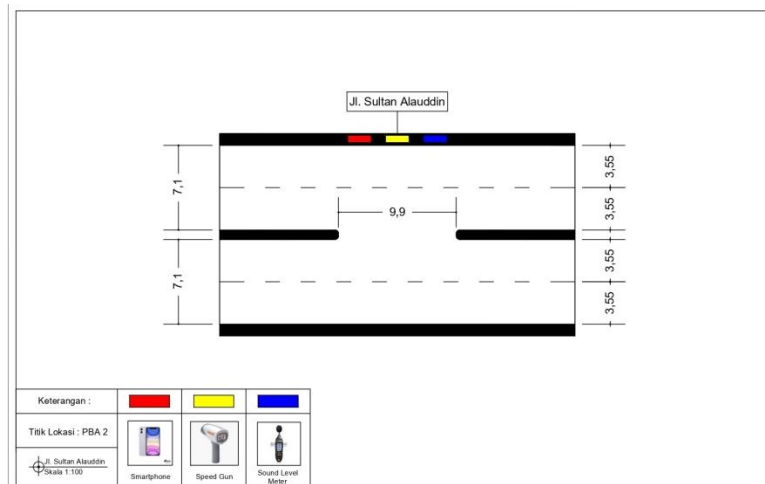


Lampiran 2. Layout untuk Tiap Titik Pengamatan

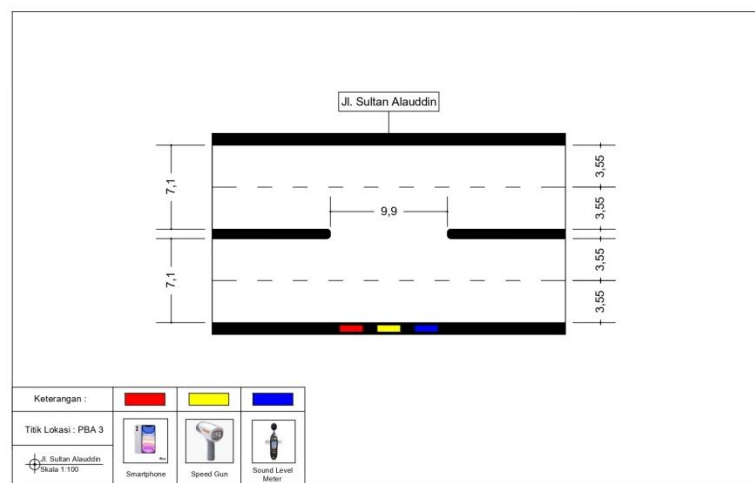
- Titik Pengamatan PBA 1



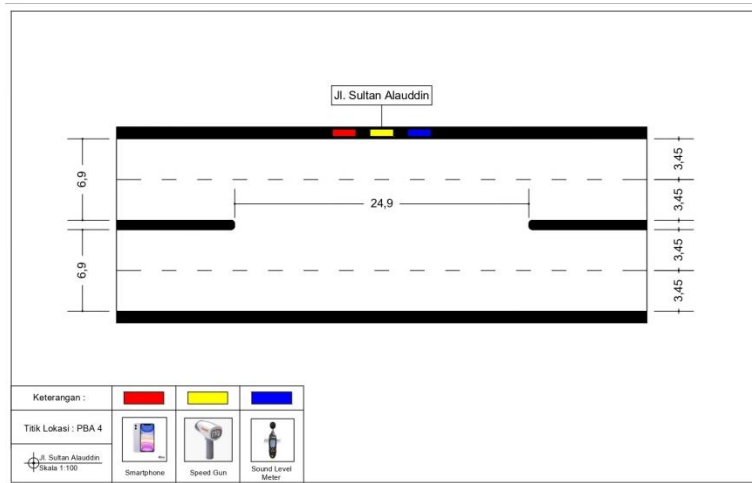
- Titik Pengamatan PBA 2



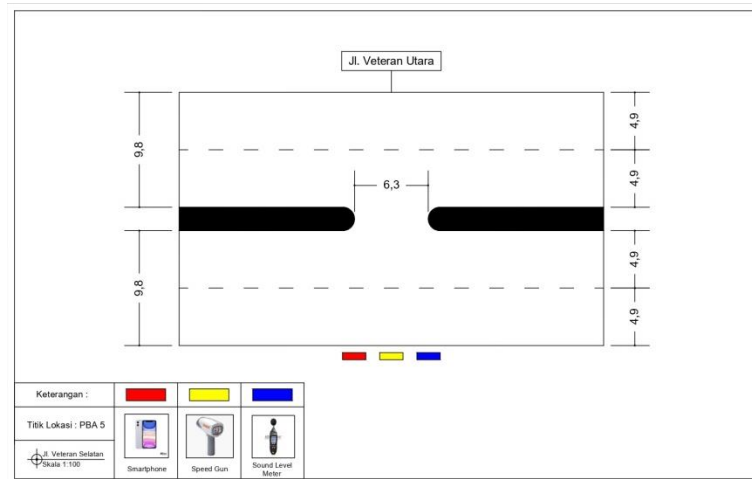
- Titik Pengamatan PBA 3



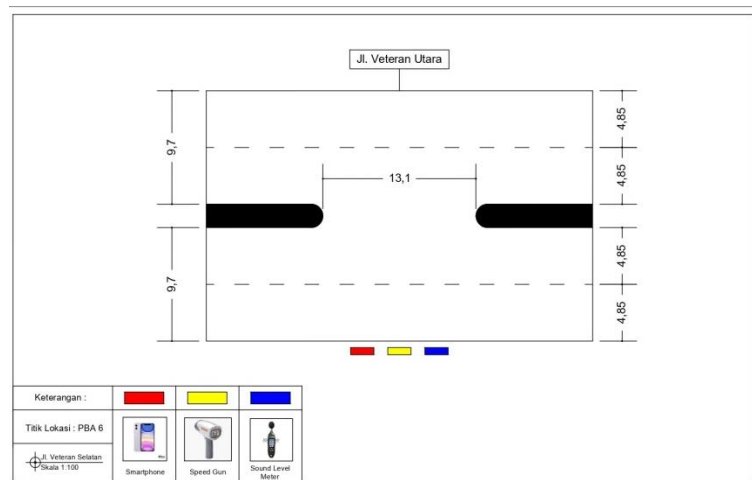
- Titik Pengamatan PBA 4



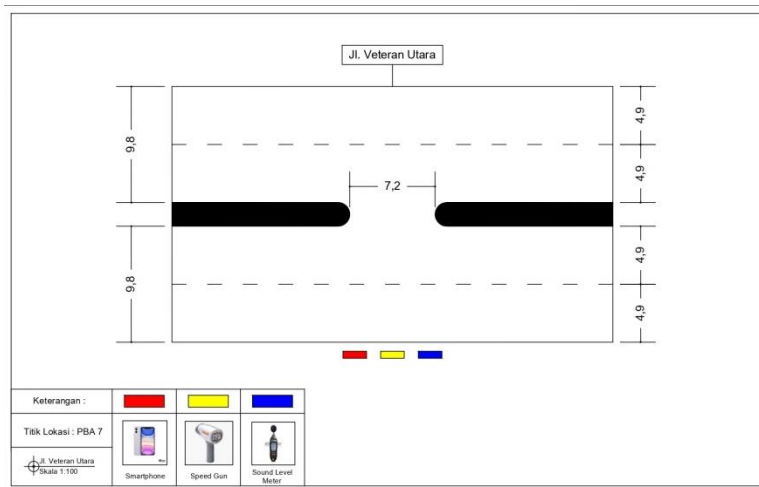
- Titik Pengamatan PBA 5



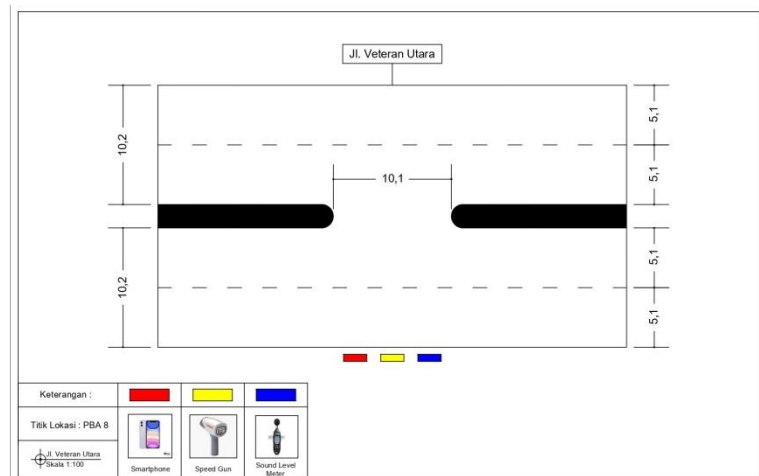
- Titik Pengamatan PBA 6



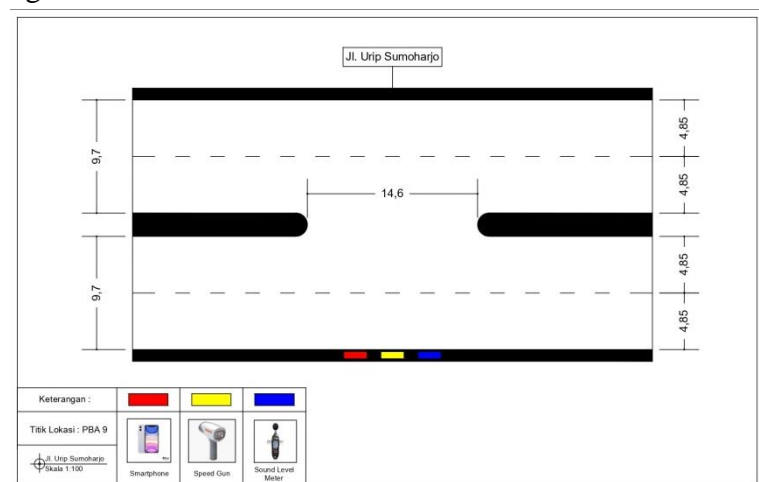
- Titik Pengamatan PBA 7



- Titik Pengamatan PBA 8

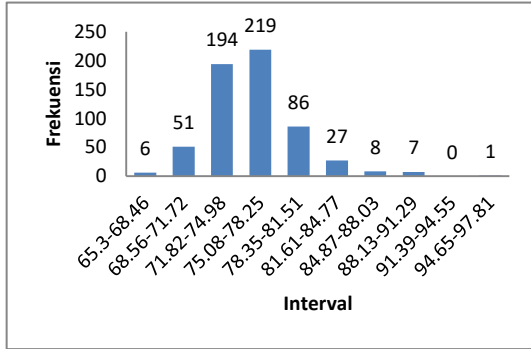


- Titik Pengamatan PBA 9

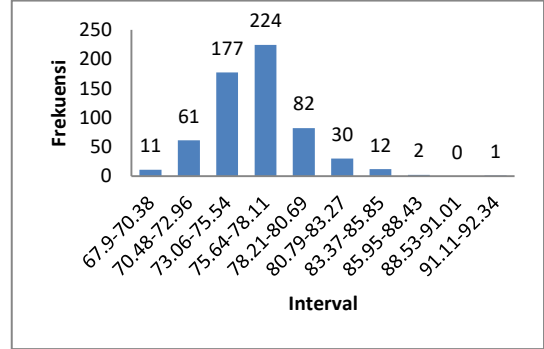


Lampiran 3. Histogram Distribusi Tingkat Kebisingan

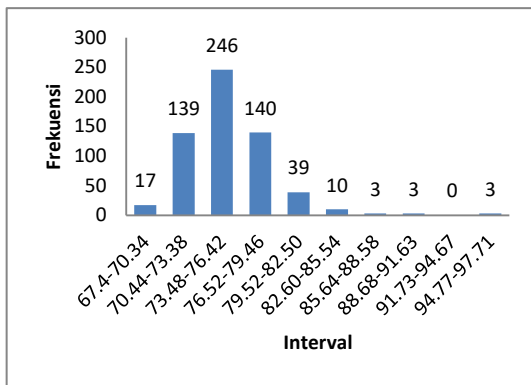
- Titik Pengamatan PBA 1



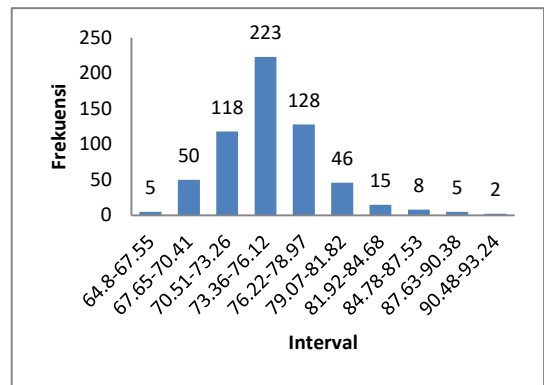
Pukul 07.10-07.20 WITA



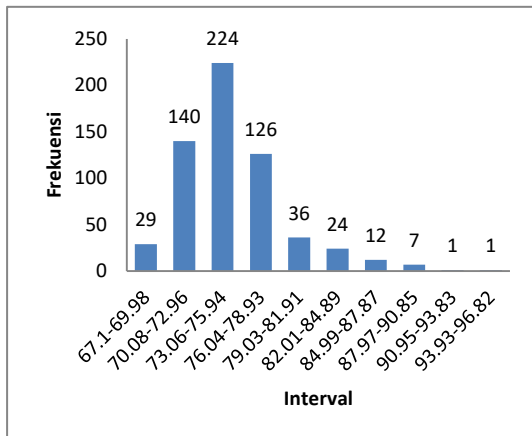
Pukul 08.10-08.20 WITA



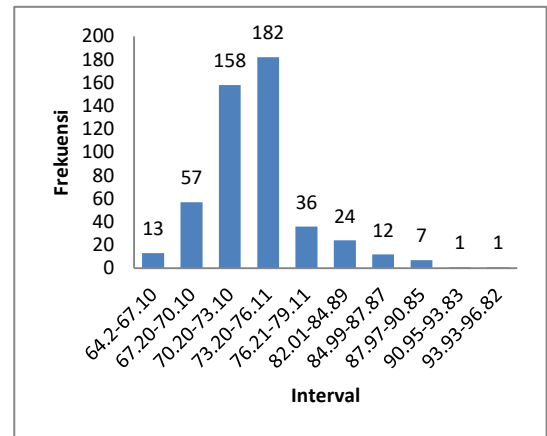
Pukul 09.10-09.20 WITA



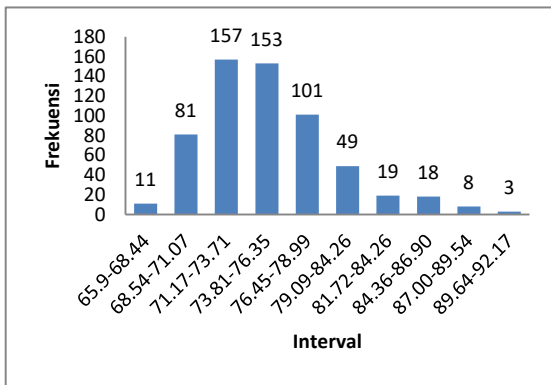
Pukul 10.10-10.20 WITA



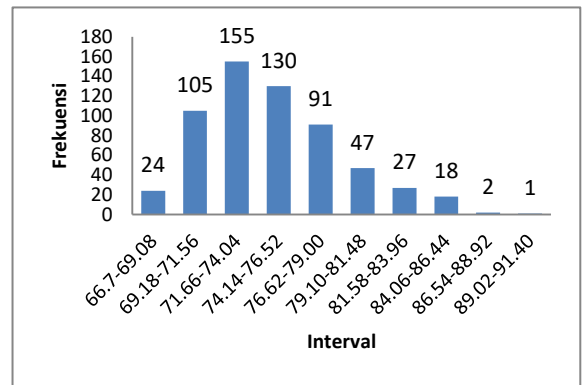
Pukul 11.10-11.20 WITA



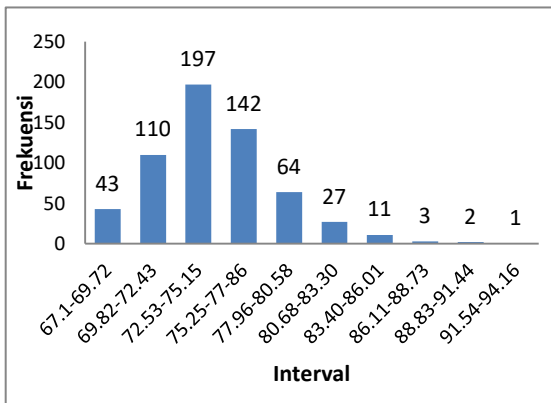
Pukul 12.10-12.20 WITA



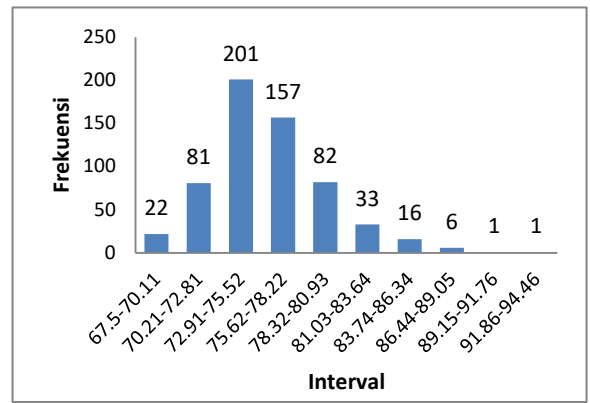
Pukul 13.10-13.20 WITA



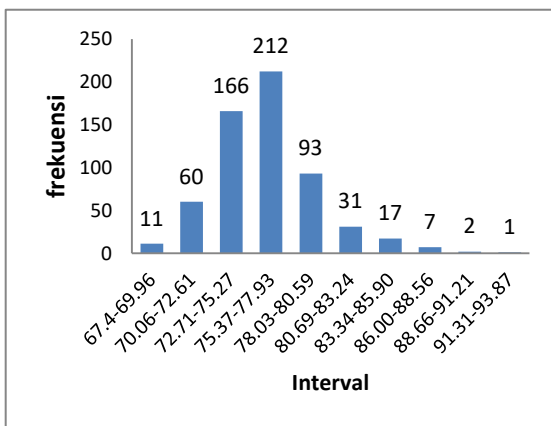
Pukul 14.10-14.20 WITA



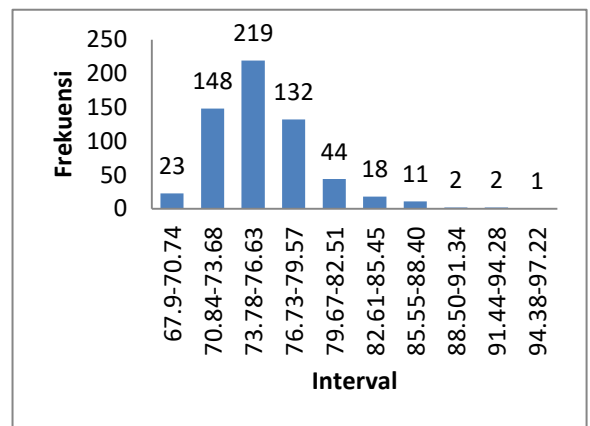
Pukul 15.10-15.20 WITA



Pukul 16.10-16.20 WITA

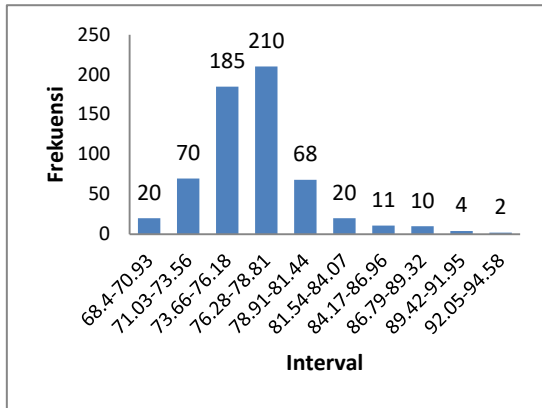


Pukul 17.10-17.20 WITA

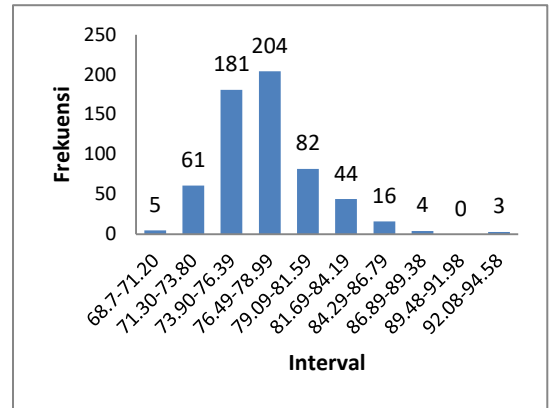


Pukul 18.10-18.20 WITA

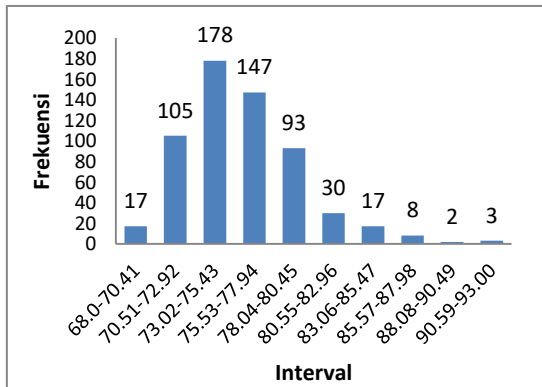
- Titik Pengamatan PBA 2



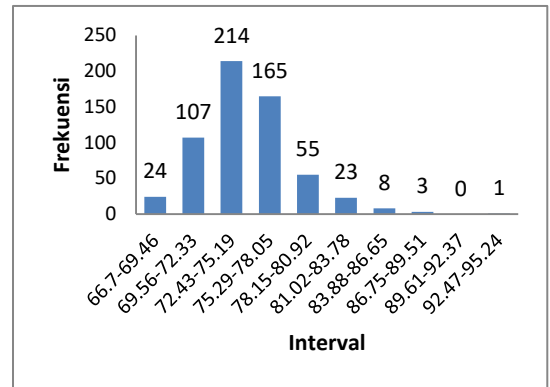
Pukul 07.10-07.20 WITA



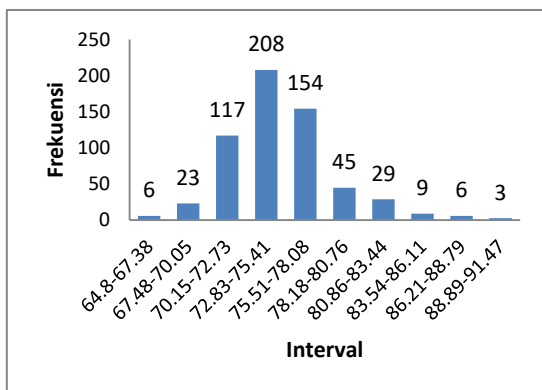
Pukul 08.10-08.20 WITA



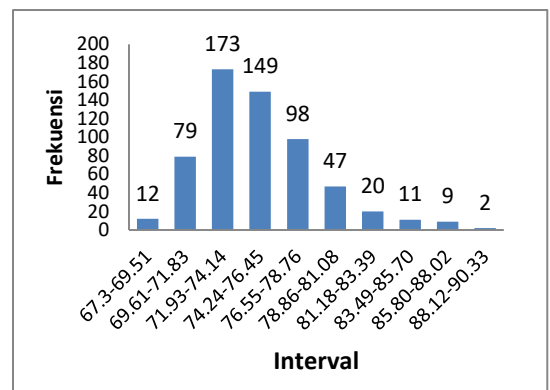
Pukul 09.10-09.20 WITA



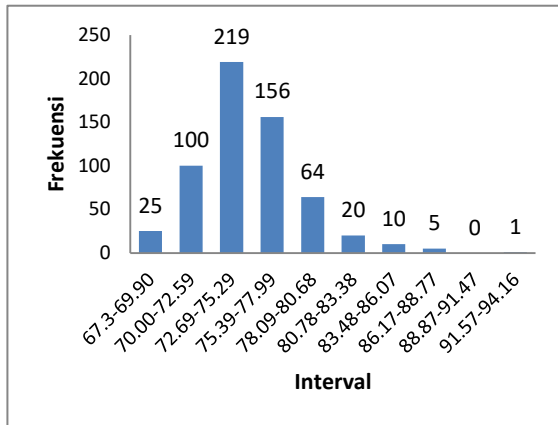
Pukul 10.10-10.20 WITA



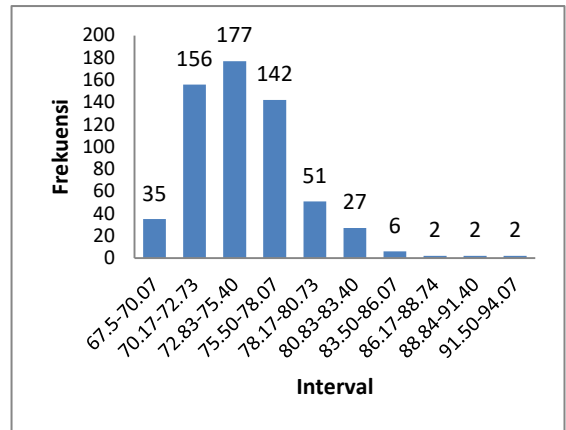
Pukul 11.10-11.20 WITA



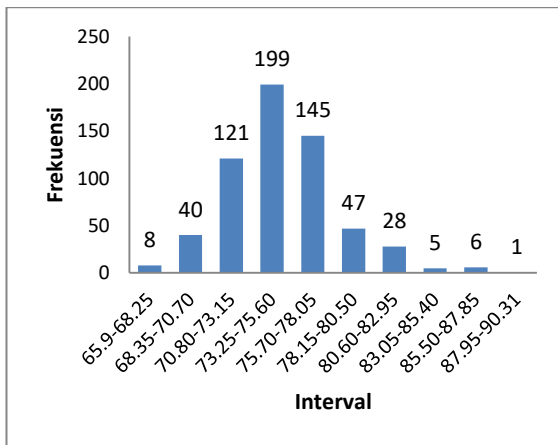
Pukul 12.10-12.20 WITA



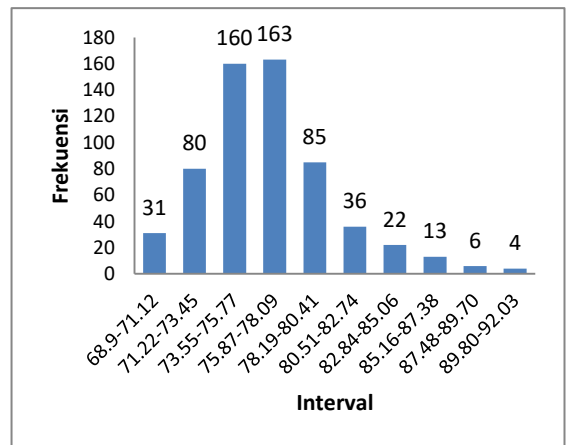
Pukul 13.10-13.20 WITA



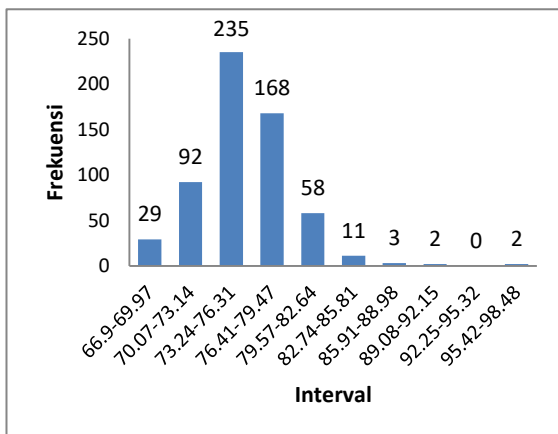
Pukul 14.10-14.20 WITA



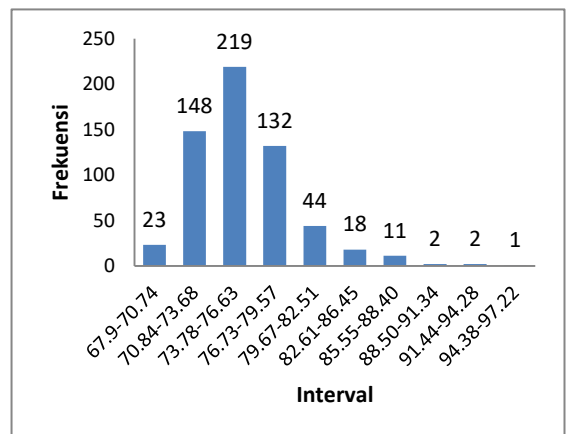
Pukul 15.10-15.20 WITA



Pukul 16.10-16.20 WITA

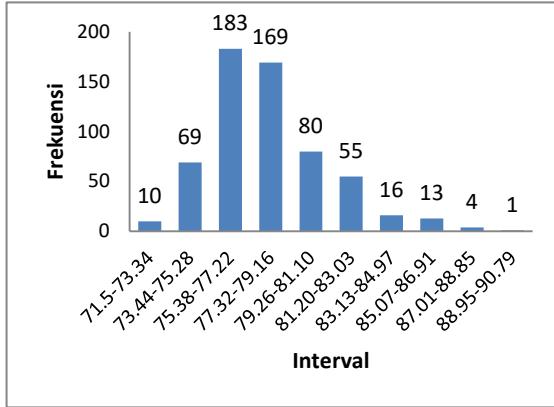


Pukul 17.10-17.20 WITA

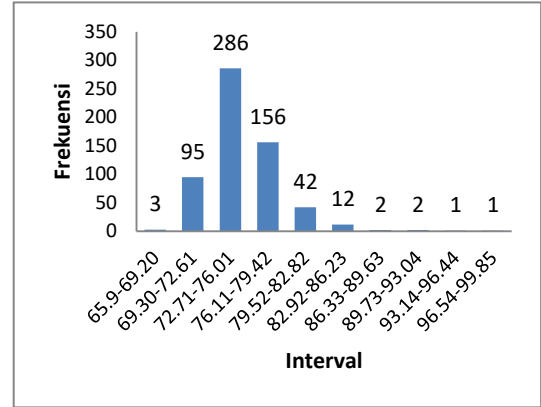


Pukul 18.10-18.20 WITA

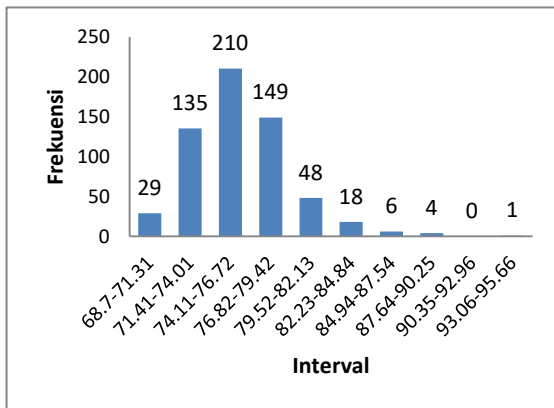
- Titik Pengamatan PBA 3



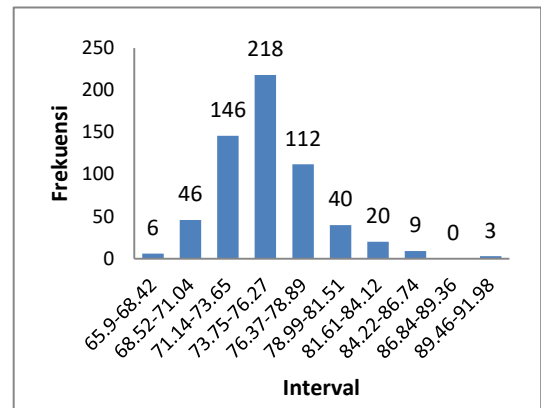
Pukul 07.10-07.20 WITA



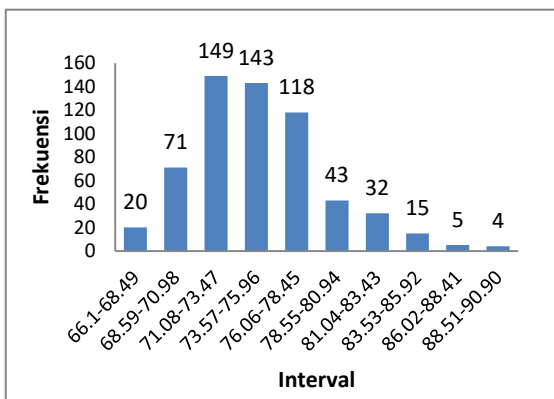
Pukul 08.10-08.20 WITA



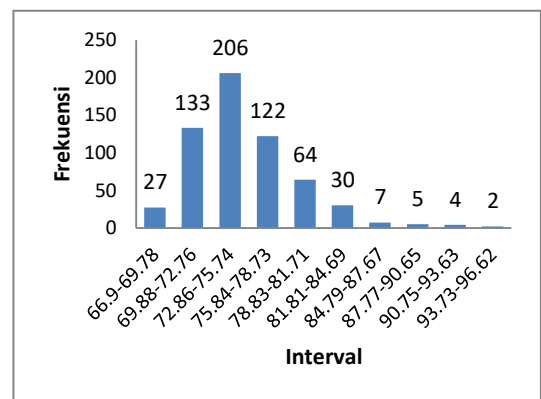
Pukul 09.10-09.20 WITA



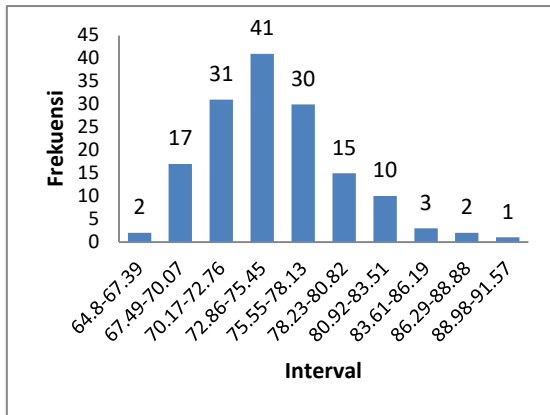
Pukul 10.10-10.20 WITA



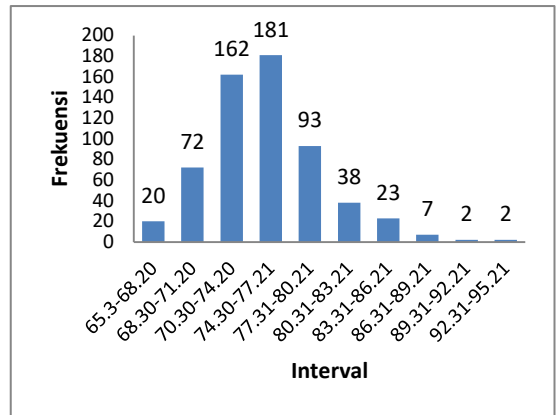
Pukul 11.10-11.20 WITA



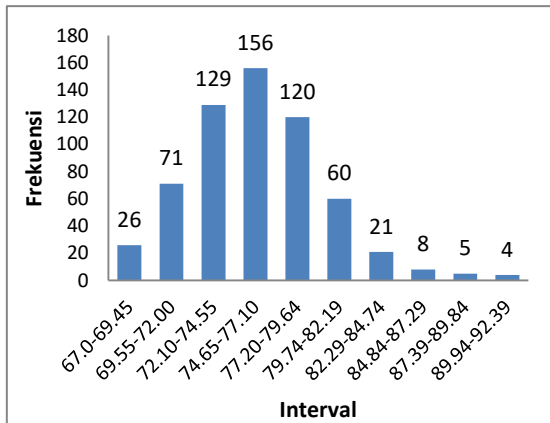
Pukul 12.10-12.20 WITA



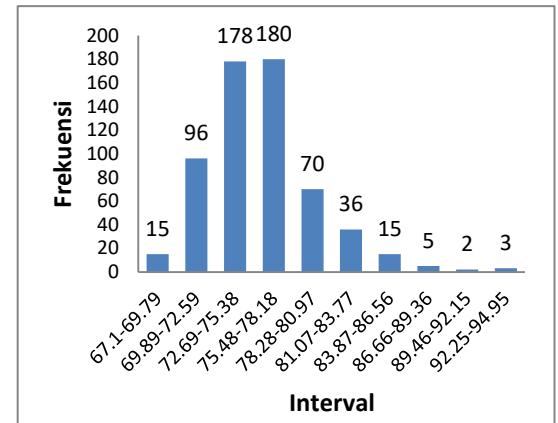
Pukul 13.10-13.20 WITA



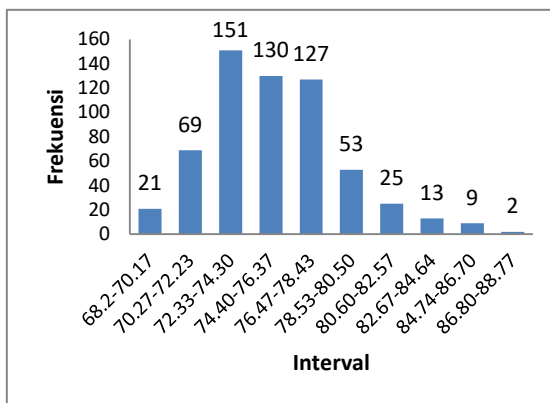
Pukul 14.10-14.20 WITA



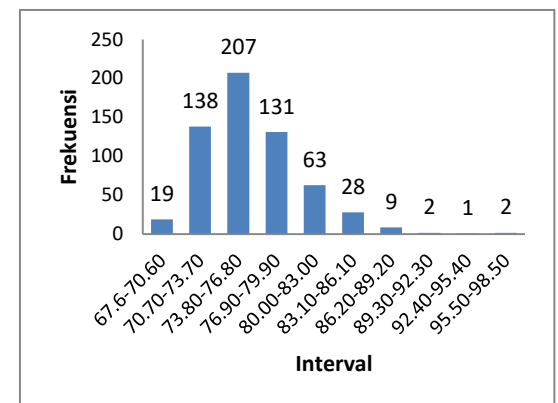
Pukul 15.10-15.20 WITA



Pukul 16.10-16.20 WITA

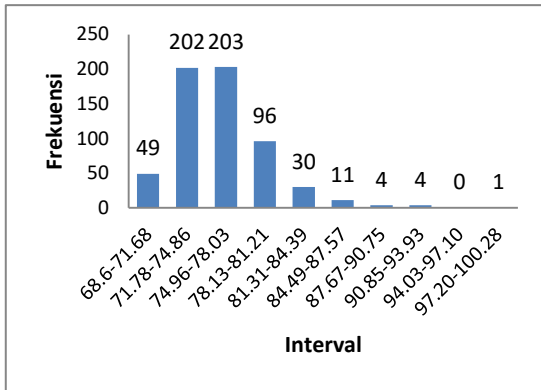


Pukul 17.10-17.20 WITA

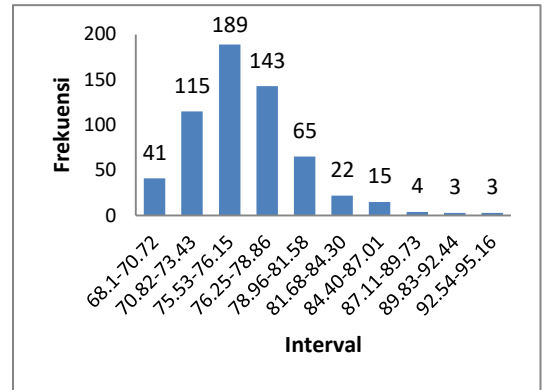


Pukul 18.10-18.20 WITA

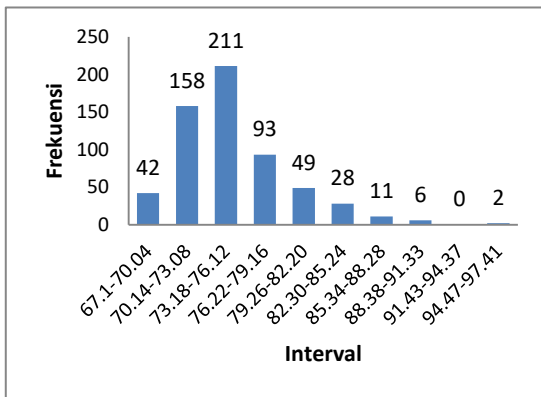
- Titik Pengamatan PBA 4



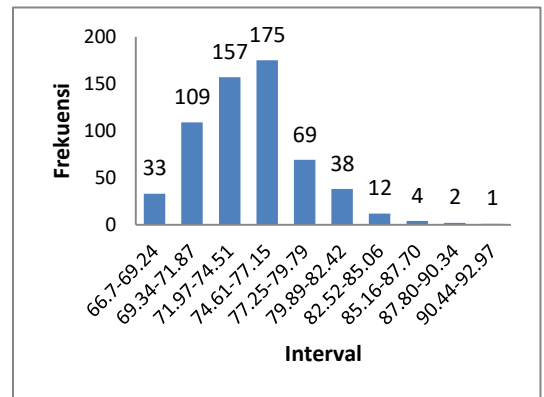
Pukul 07.10-07.20 WITA



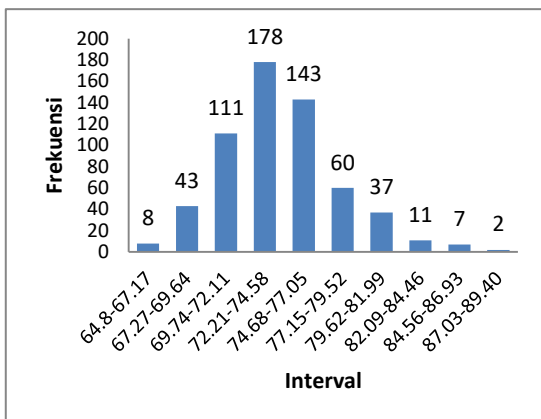
Pukul 08.10-08.20 WITA



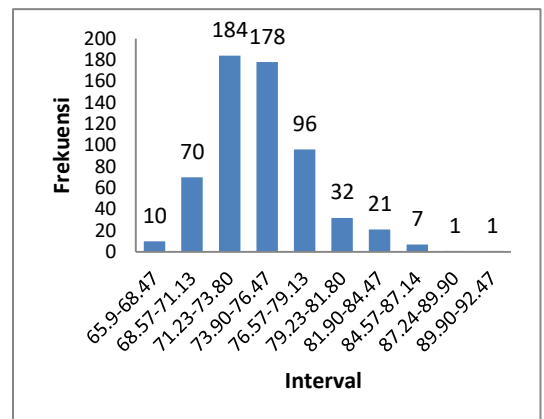
Pukul 09.10-09.20 WITA



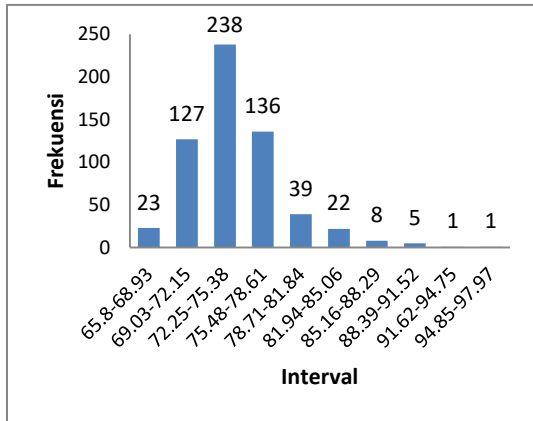
Pukul 10.10-10.20 WITA



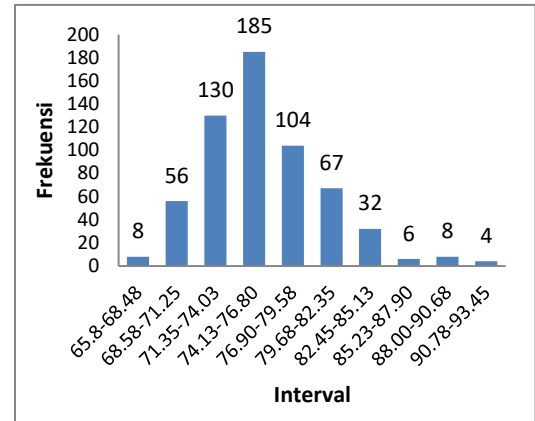
Pukul 11.10-11.20 WITA



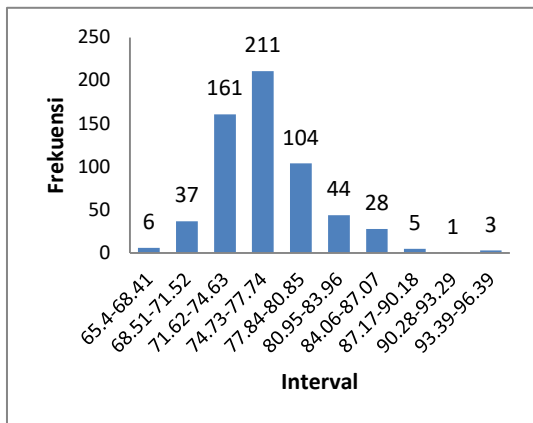
Pukul 12.10-12.20 WITA



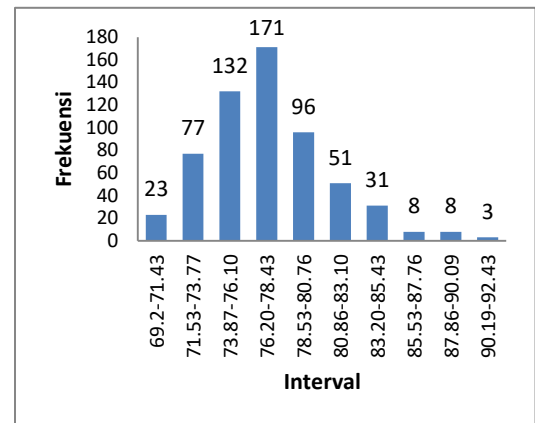
Pukul 13.10-13.20 WITA



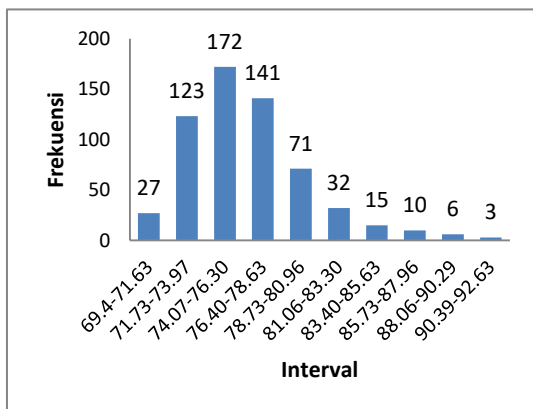
Pukul 14.10-14.20 WITA



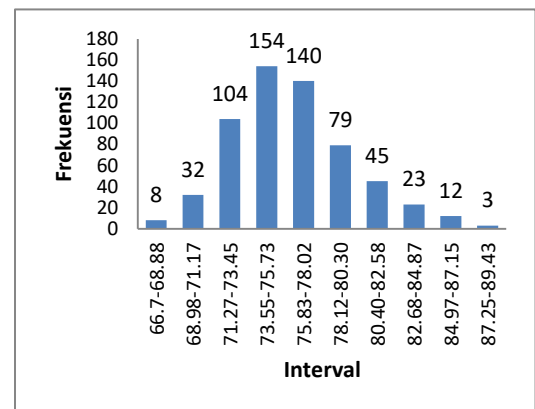
Pukul 15.10-15.20 WITA



Pukul 16.10-16.20 WITA

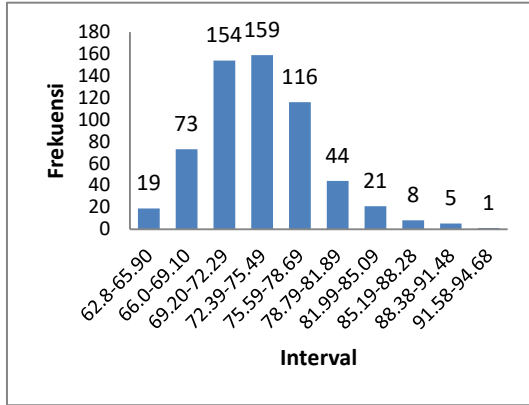


Pukul 17.10-17.20 WITA

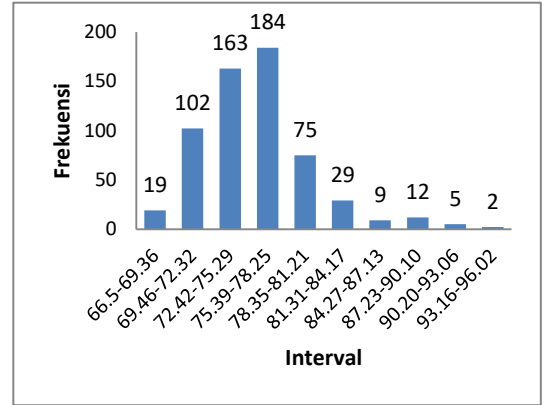


Pukul 18.10-18.20 WITA

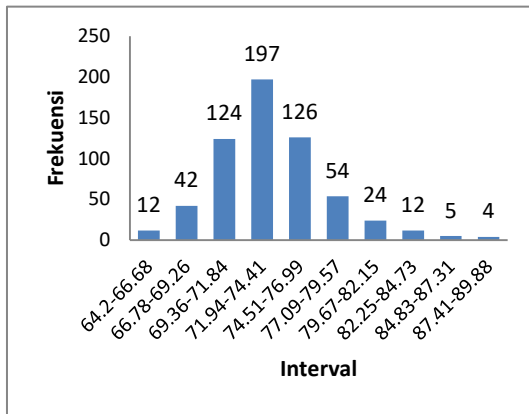
- Titik Pengamatan PBA 5



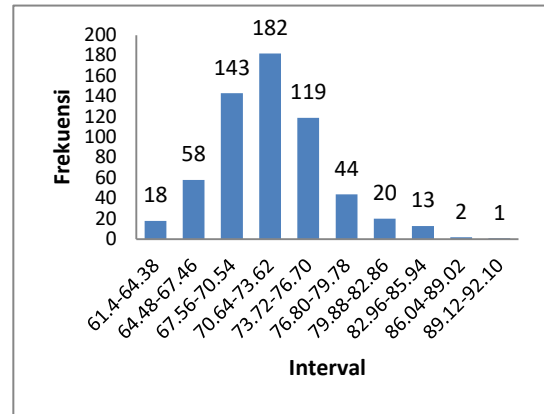
Pukul 07.10-07.20 WITA



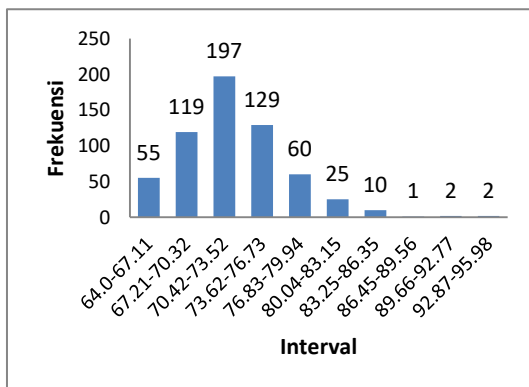
Pukul 08.10-08.20 WITA



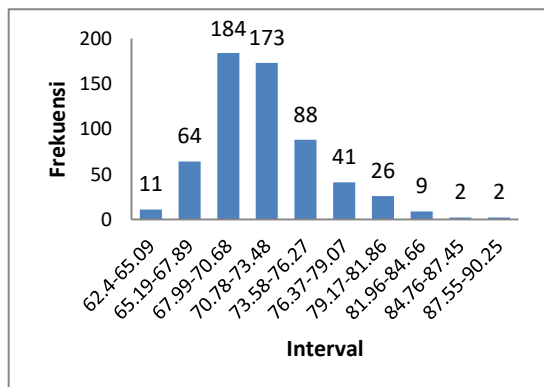
Pukul 09.10-09.20 WITA



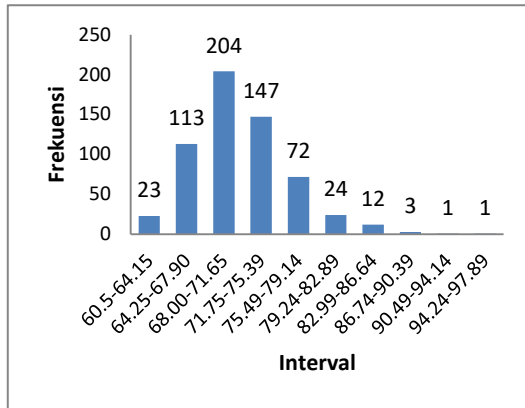
Pukul 10.10-10.20 WITA



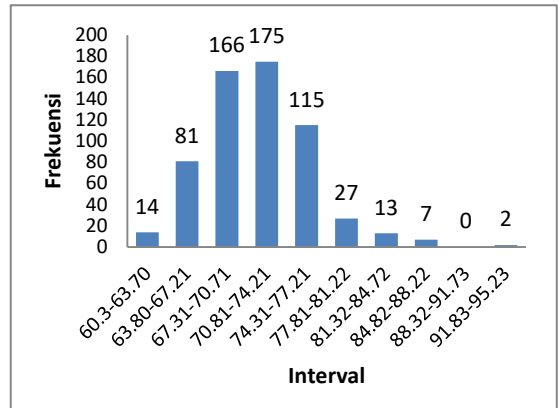
Pukul 11.10-11.20 WITA



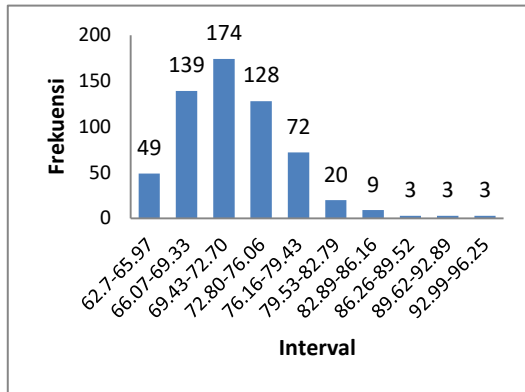
Pukul 12.10-12.20 WITA



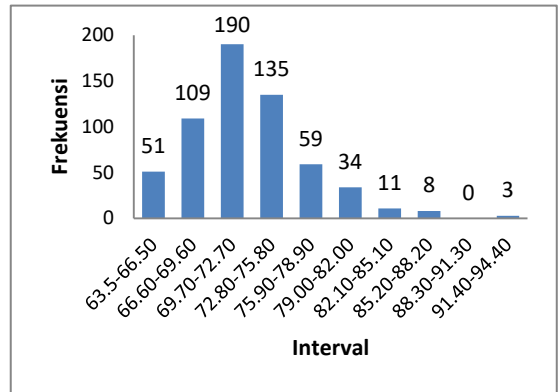
Pukul 13.10-13.20 WITA



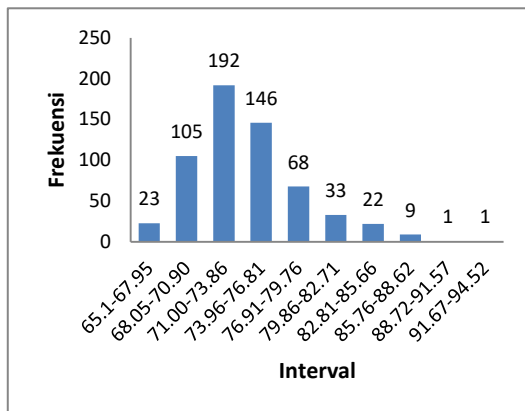
Pukul 14.10-14.20 WITA



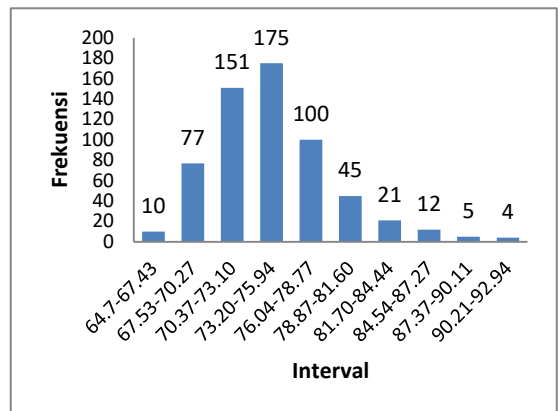
Pukul 15.10-15.20 WITA



Pukul 16.10-16.20 WITA

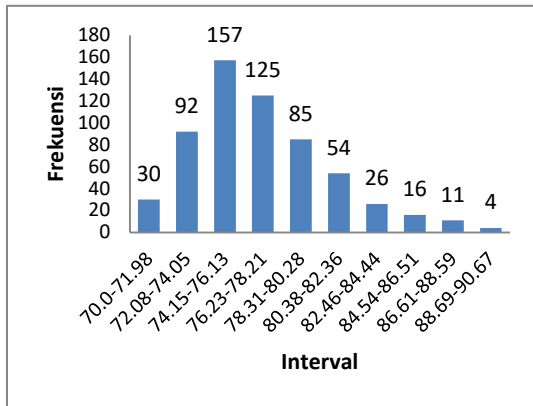


Pukul 17.10-17.20 WITA

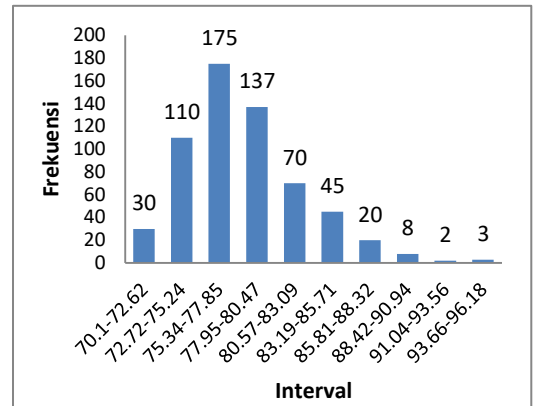


Pukul 18.10-18.20 WITA

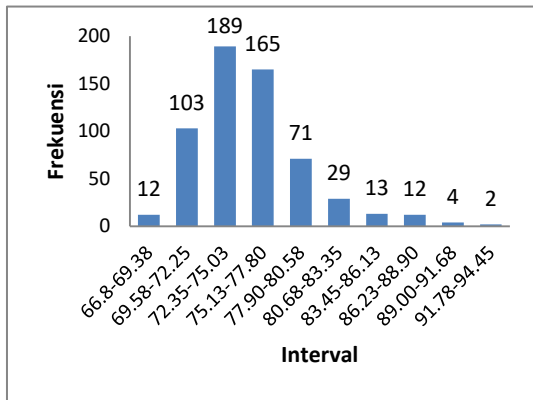
- Titik Pengamatan PBA 6



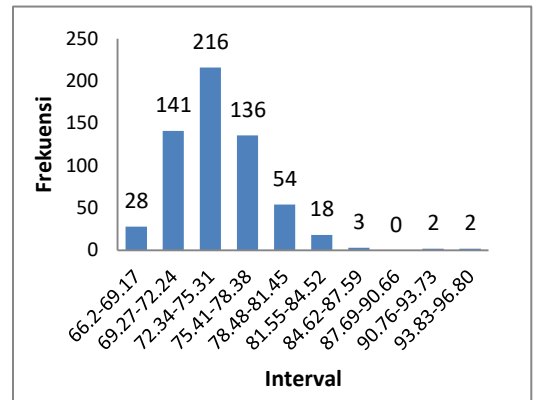
Pukul 07.10-07.20 WITA



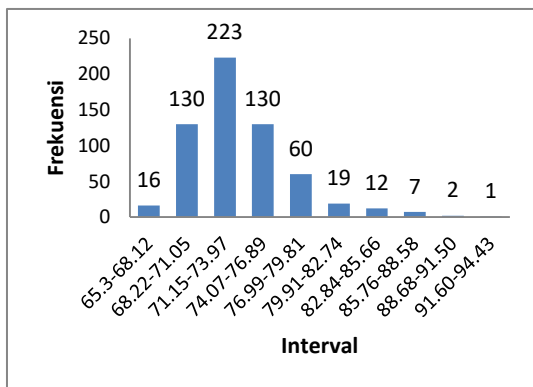
Pukul 08.10-08.20 WITA



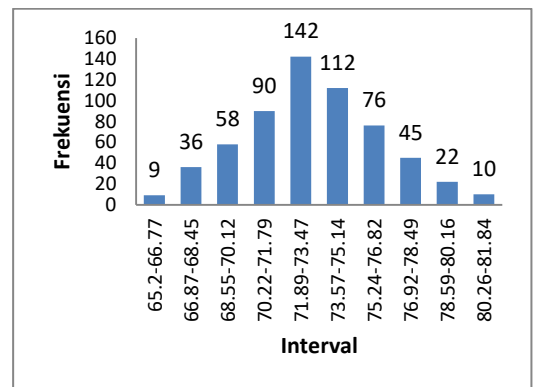
Pukul 09.10-09.20 WITA



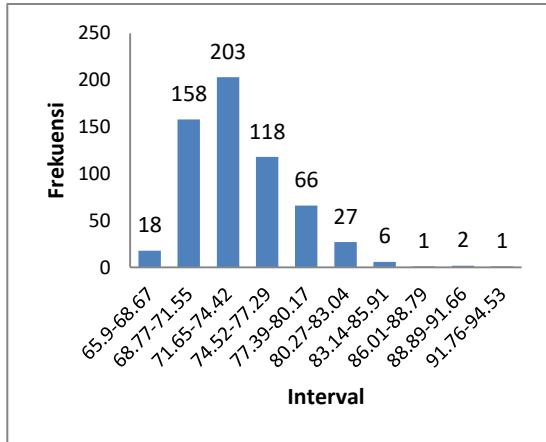
Pukul 10.10-10.20 WITA



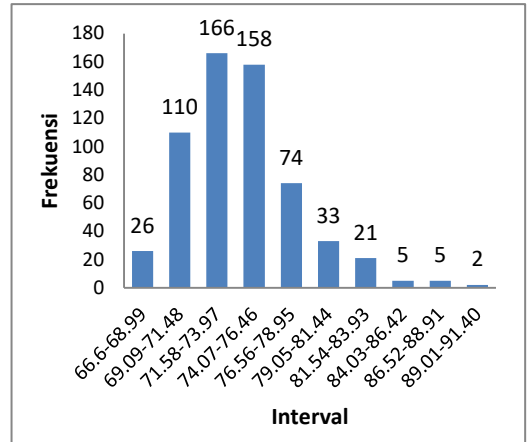
Pukul 11.10-11.20 WITA



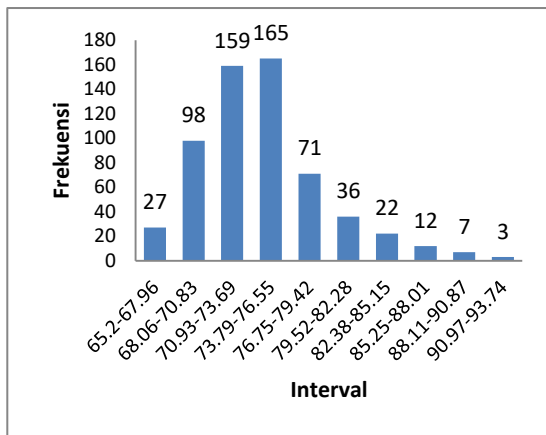
Pukul 12.10-12.20 WITA



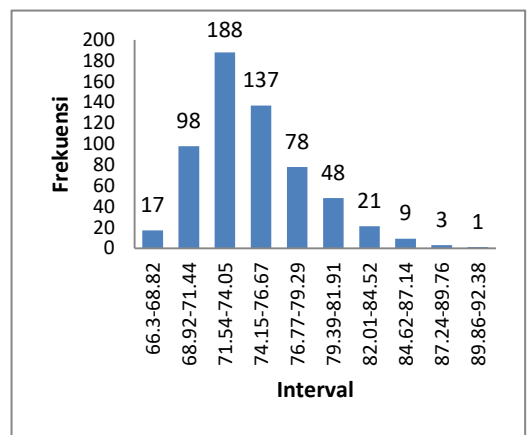
Pukul 13.10-13.20 WITA



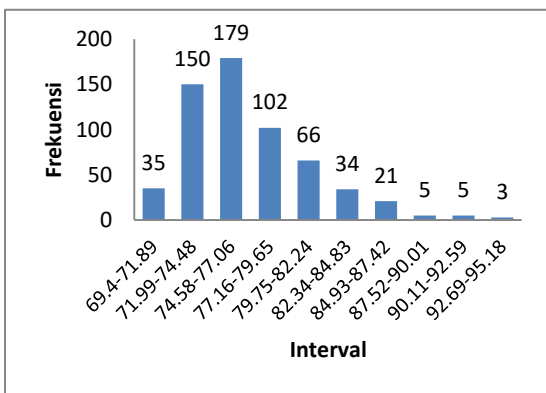
Pukul 14.10-14.20 WITA



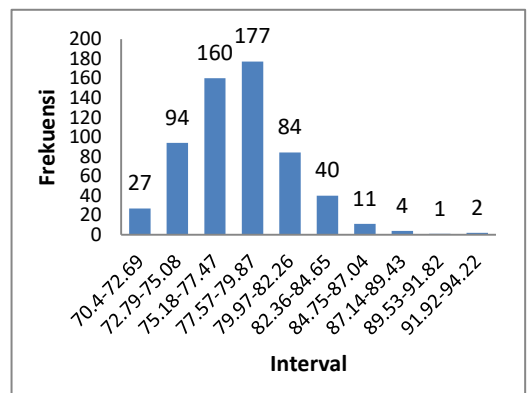
Pukul 15.10-15.20 WITA



Pukul 16.10-16.20 WITA

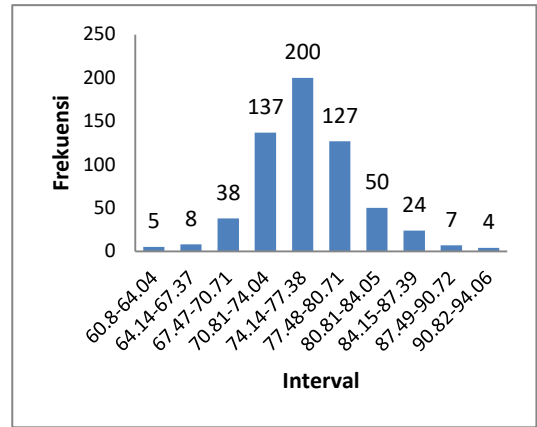
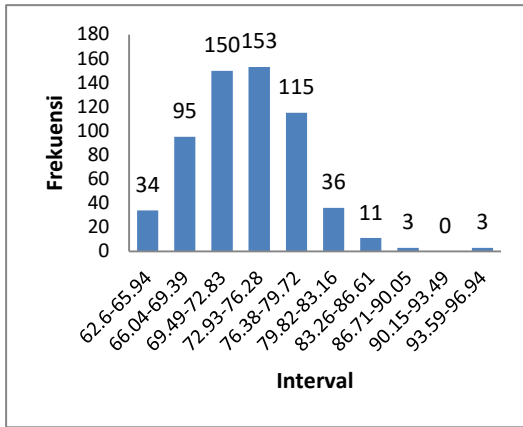


Pukul 17.10-17.20 WITA



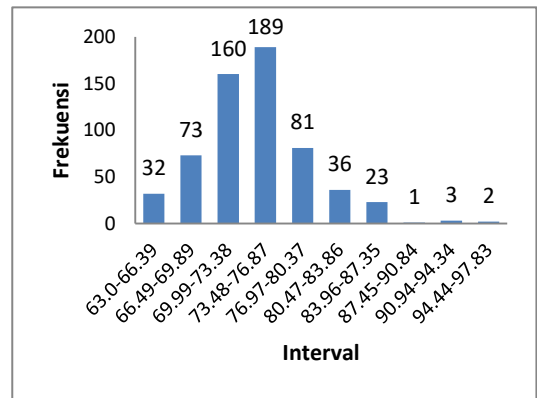
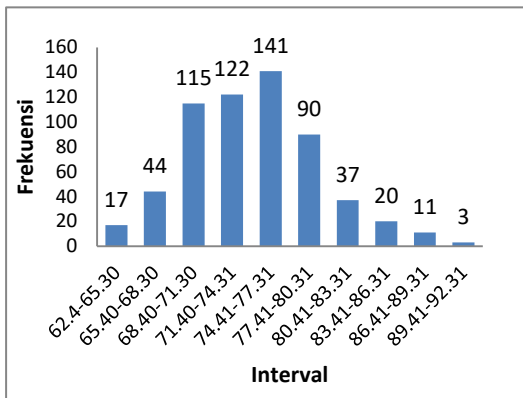
Pukul 18.10-18.20 WITA

- Titik Pengamatan PBA 7



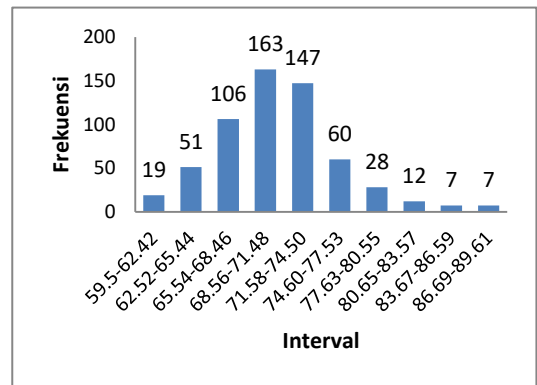
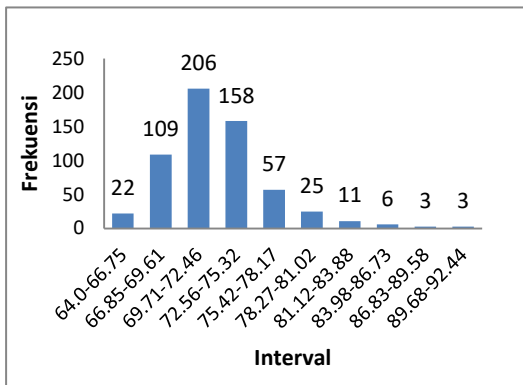
Pukul 07.10-07.20 WITA

Pukul 08.10-08.20 WITA



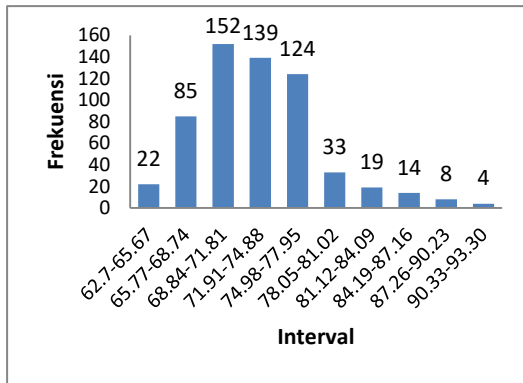
Pukul 09.10-09.20 WITA

Pukul 10.10-10.20 WITA

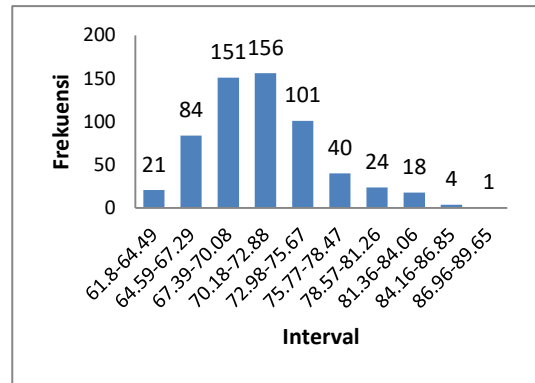


Pukul 11.10-11.20 WITA

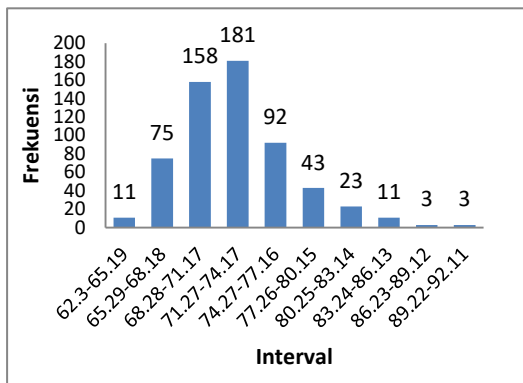
Pukul 12.10-12.20 WITA



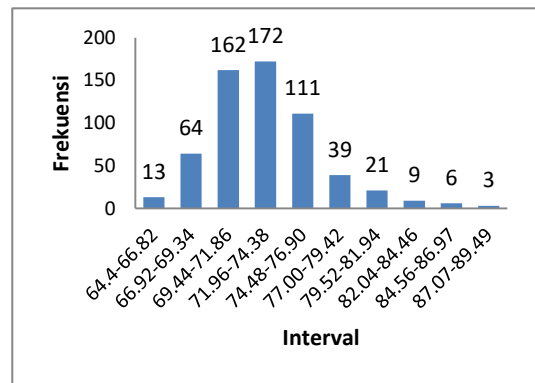
Pukul 13.10-13.20 WITA



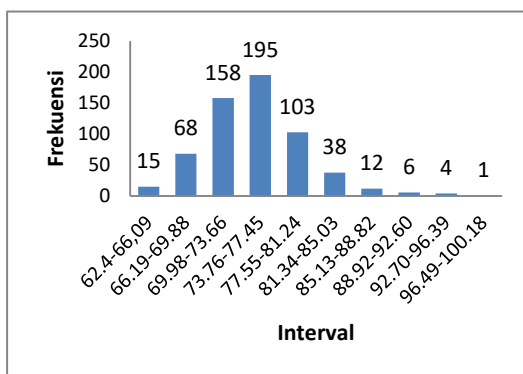
Pukul 14.10-14.20 WITA



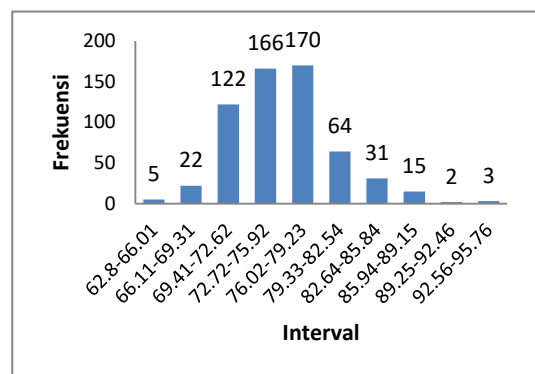
Pukul 15.10-15.20 WITA



Pukul 16.10-16.20 WITA\

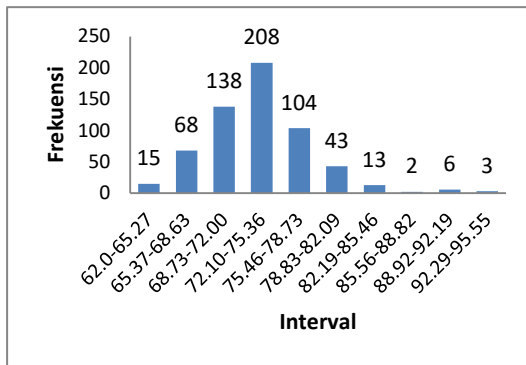


Pukul 17.10-17.20 WITA

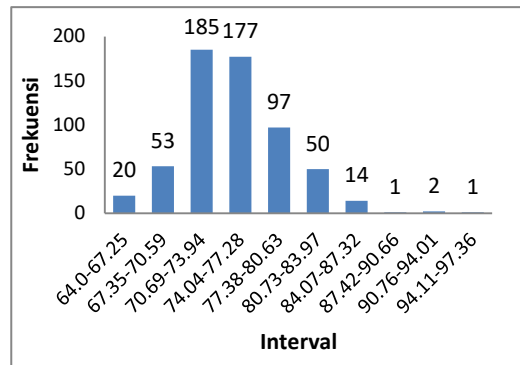


Pukul 18.10-18.20 WITA

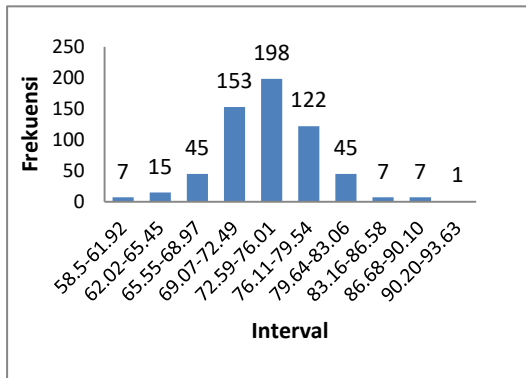
- Titik Pengamatan PBA 8



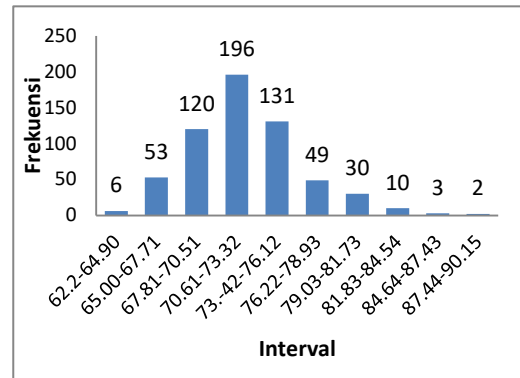
Pukul 07.10-07.20 WITA



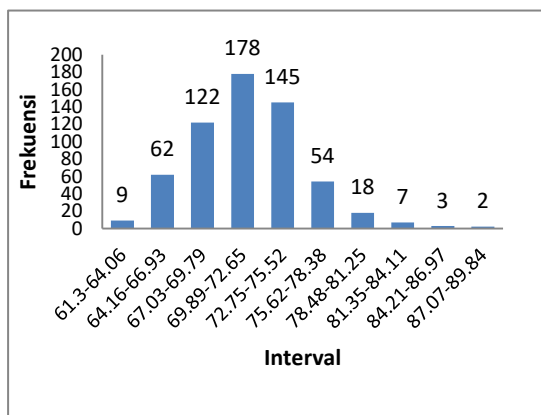
Pukul 08.10-08.20 WITA



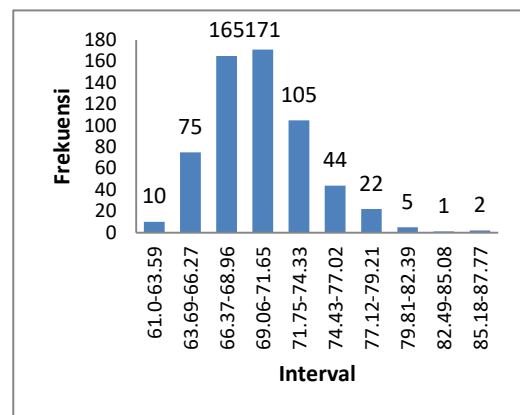
Pukul 09.10-09.20 WITA



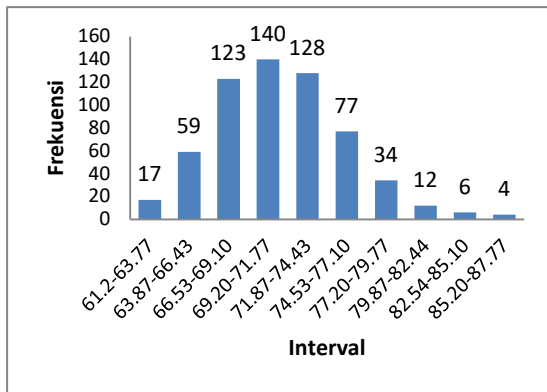
Pukul 10.10-10.20 WITA



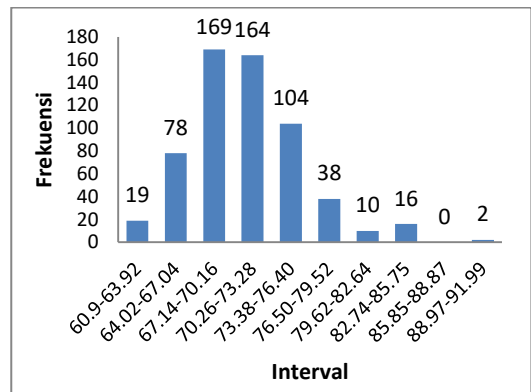
Pukul 11.10-11.20 WITA



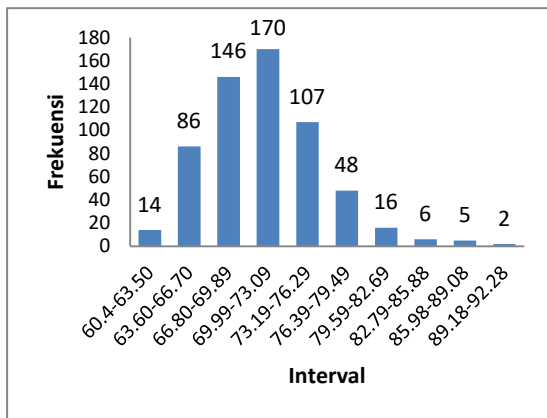
Pukul 12.10-12.20 WITA



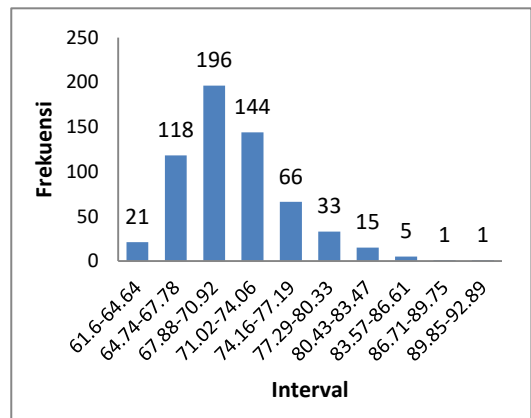
Pukul 13.10-13.20 WITA



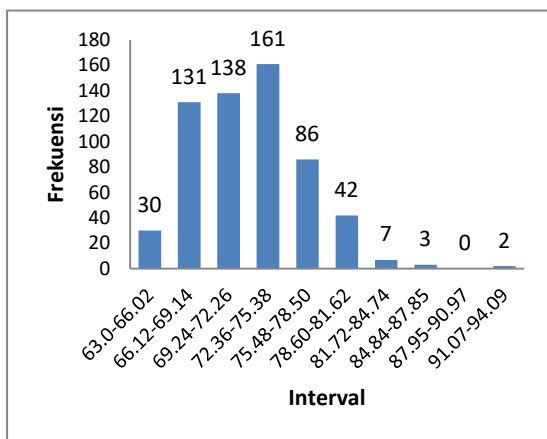
Pukul 14.10-14.20 WITA



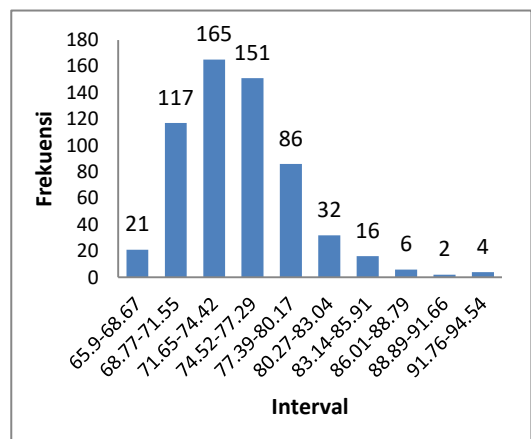
Pukul 15.10-15.20 WITA



Pukul 16.10-16.20 WITA

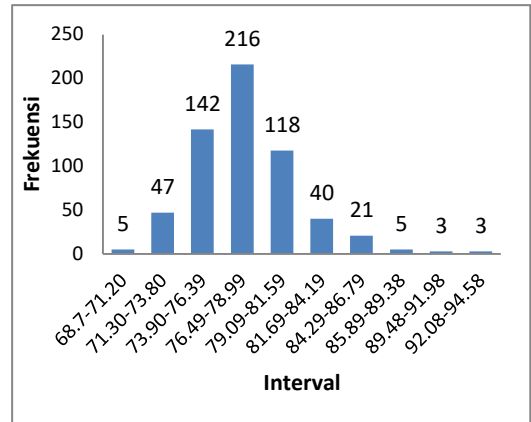
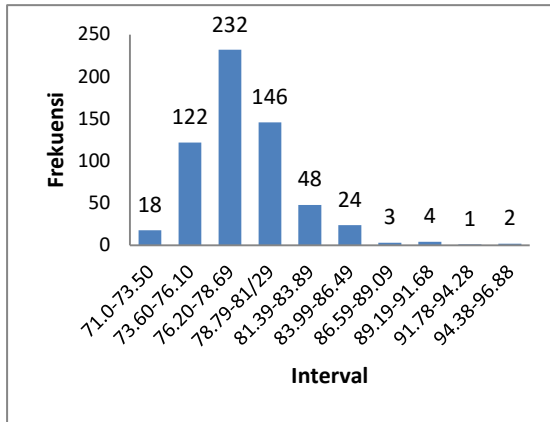


Pukul 17.10-17.20 WITA

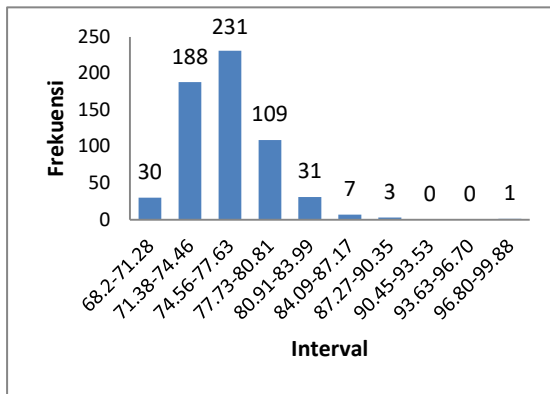


Pukul 18.10-18.20 WITA

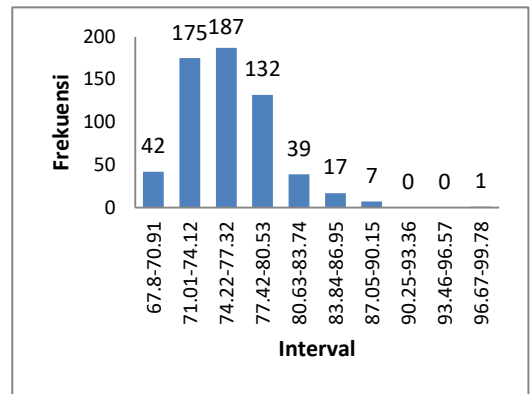
- Titik Pengamatan PBA 9



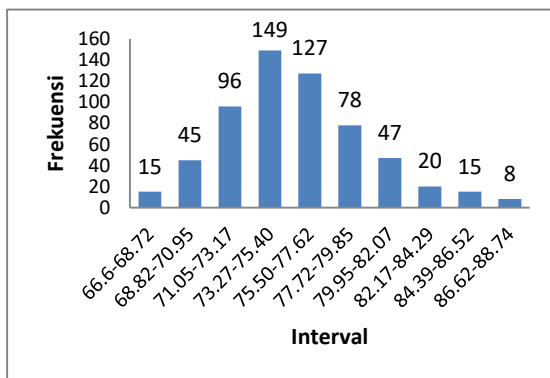
Pukul 07.10-07.20 WITA



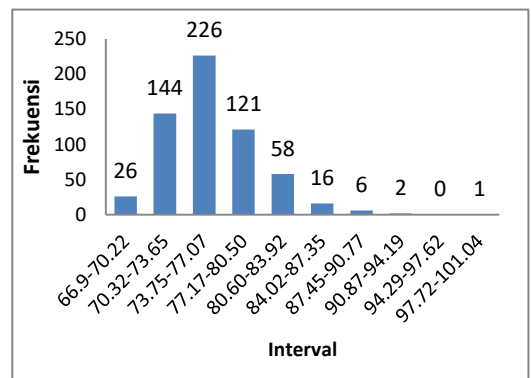
Pukul 08.10-08.20 WITA



Pukul 09.10-09.20 WITA

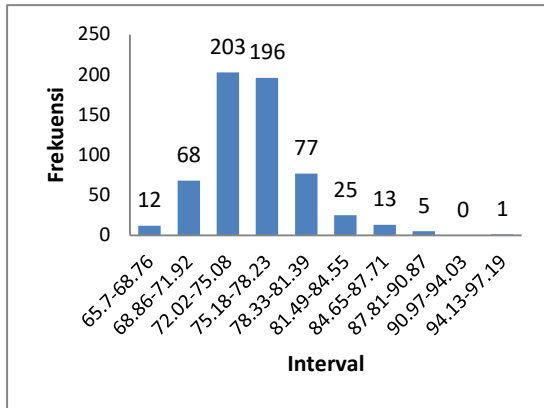


Pukul 10.10-10.20 WITA

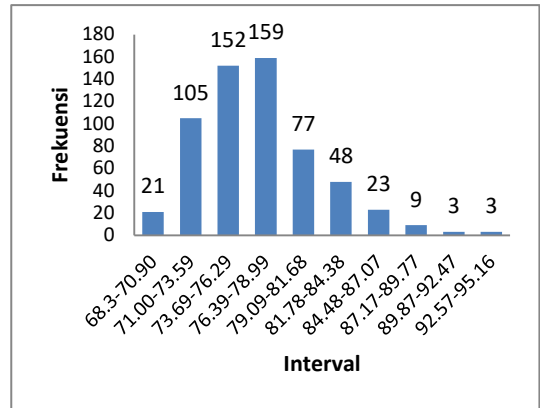


Pukul 11.10-11.20 WITA

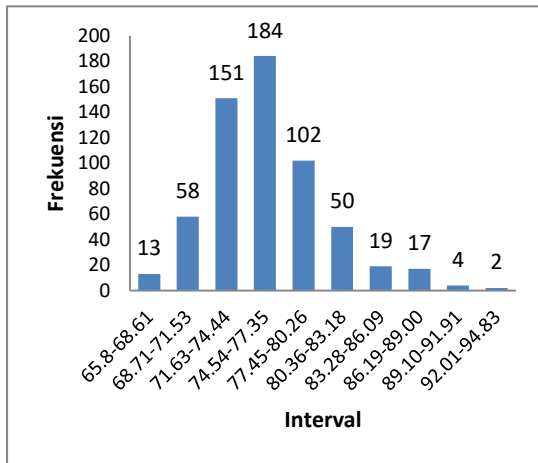
Pukul 12.10-12.20 WITA



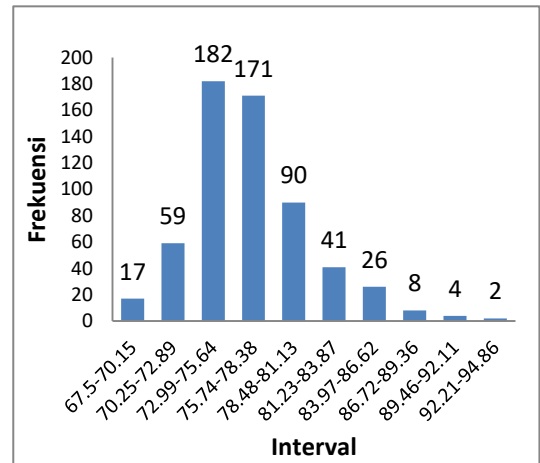
Pukul 13.10-13.20 WITA



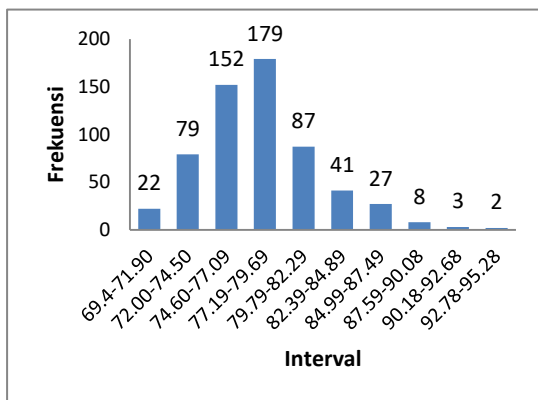
Pukul 14.10-14.20 WITA



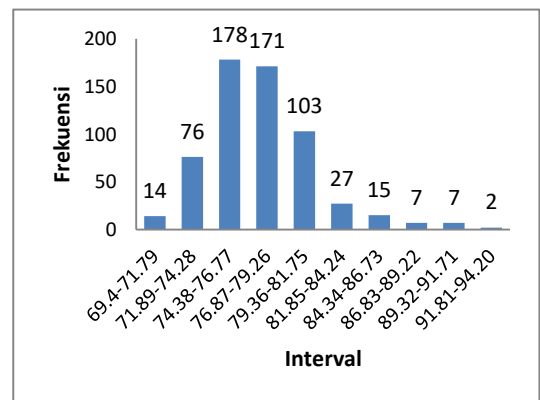
Pukul 15.10-15.20 WITA



Pukul 16.10-16.20 WITA



Pukul 17.10-17.20 WITA



Pukul 18.10-18.20 WITA