

Daftar Pustaka

- Akbar H, 2016. *Indeks Prediktif Kejadian Schistosomiasis Berbasis Perilaku Masyarakat di Dataran Tinggi Lindu Kabupaten Sigi*. Airlangga.
- Al-Jubury A, Kania P, Bygum A & Buchmann K, 2020. Temperature and light effects on *Trichobilharzia szidati* cercariae with implications for a risk analysis. *Acta Veterinaria Scandinavica*, 62(1), pp.1–9. Available at: <https://doi.org/10.1186/s13028-020-00553-z>.
- Ali SM, Allan F, Ayi I, Chandre F, Marcos P, Coelho Z, et al., 2020. *Utilisation sur le terrain de molluscicides dans les programmes de lutte contre la schistosomiase : un manuel pratique à l'usage des gestionnaires de programmes To cite this version: HAL Id: hal-03001037*, Available at: <https://hal.archives-ouvertes.fr/hal-03001037>.
- Anastasia H, Widjaja J & ..., 2022. Prevalence of *Schistosoma japonicum* Cercaria among *Oncomelania hupensis lindoensis* Snails, Snails Density, and Foci Area in Schistosomiasis Endemic Area, Indonesia. *Jurnal Vektor Penyakit*, Vol 16 No., pp.33–42. Available at: <http://ejournal2.litbang.kemkes.go.id/index.php/vektor/article/view/6015>.
- Aula OP, McManus DP, Jones MK & Gordon CA, 2021. Schistosomiasis with a focus on Africa. *Tropical Medicine and Infectious Disease*, 6(3), pp.1–40.
- Badan Perencanaan Pembangunan Nasional, 2018. *Roadmap Eradikasi Penyakit Demam Keong (Schistosomiasis)*, Jakarta: Kementerian Kesehatan RI.
- Barodji, Sudomo M, Putrali J & Joesoef MA, 1983. Percobaan Pemberantasan Hospes Perantara Schistosomiasis (*Oncomelania Hupensis Lindoensis*) dengan Baylucide dan Kombinasi Pengeringan dengan Baylucide di Dataran Lindu, Sulawesi Tengah. *Buletin Penelitian Kesehatan*, Volume XI, pp.27–34.
- Boitt MK & Suleiman MK, 2021. Mapping of Freshwater Snails ' Habitat — A Source of Transmitting Bilharzia in Mwea. *Scientific Research Publishing*, Volume 9, pp.130–150.
- Braun L, Sylvester YD, Zerefa MD, Maru M, Allan F, Zewge F, et al., 2020. Chlorination of *schistosoma mansoni* cercariae. *PLoS Neglected Tropical Diseases*, 14(8), pp.1–16. Available at: <http://dx.doi.org/10.1371/journal.pntd.0008665>.

- Brown DS, 1967. A review of the freshwater Mollusca of Natal and their distribution. *Annals of the Natal Museum*, 18(3), pp.477–494. Available at: <http://content.ajarchive.org/cgi-bin/showfile.exe?CISOROOT=/03040798&CISOPTR=732%5Cnhttp://hdl.handle.net/10499/AJ712>.
- Chen Z, Wang W, Yao J, Li S, Zhang X, Hu H, et al., 2019. Toxicity of a molluscicide candidate PPU07 against *Oncomelania hupensis* (Gredler, 1881) and local fish in field evaluation. *Chemosphere*, 222, pp.56–61. Available at: <https://doi.org/10.1016/j.chemosphere.2019.01.102>.
- Dai J, Li Y, Wang W, Xing Y, Qu G & Liang Y, 2014. Sensitivity of *Oncomelania hupensis* to niclosamide: A nation-wide survey in China. *International Journal of Environmental Research and Public Health*, 11(3), pp.3086–3095.
- Dai JR, Li YZ, Wang W, Xing YT, Qu GL & Liang YS, 2015. Resistance to niclosamide in *Oncomelania hupensis*, the intermediate host of *Schistosoma japonicum*: should we be worried? *Parasitology*, 142(2), pp.332–340. Available at: <https://www.cambridge.org/core/journals/parasitology/article/abs/resistance-to-niclosamide-in-oncomelania-hupensis-the-intermediate-host-of-schistosoma-japonicum-should-we-be-worried/14EDE3B53D51E2E57426FA02B7AC974D> [Accessed October 4, 2022].
- Dinas Kesehatan Provinsi Sulawesi Tengah, 2021. *Laporan Survey Prevalensi Schistosomiasis Sulawesi Tengah Tahun 2021*, Palu.
- Dinas Kesehatan Provinsi Sulawesi Tengah, 2020. *Profil Kesehatan Provinsi Sulawesi Tengah*,
- Dinas Kesehatan Provinsi Sulawesi Tengah, 2019. *Profil kesehatan Provinsi Sulawesi tengah Tahun 2019*,
- Direktorat Jenderal P2 dan PL, 2015. *Pedoman Teknis Pengendalian Schistosomiasis*, Jakarta.
- Direktorat Pencegahan dan Pengendalian Penyakit Tular Vektor dan Zoonotik, 2021. *Laporan Kinerja Tahun 2021*, Jakarta. Available at: https://ptvz.kemkes.go.id/storage/laporan/laporan_1649920485.pdf.
- Erlan A, Widjaja J, Widayati AN, Ningsi, Maksud M, Tolistiawaty I, et al., 2020. *Evaluasi Pengendalian Schistosomiasis Oleh Lintas Sektor dan Implementasi Bada Model di Daerah Endemis Schistosomiasis di*

Indonesia, Available at:
[https://dspace.uui.ac.id/bitstream/handle/123456789/25859/10-24 Ahmad Erlan-UPAYA PENGENDALIAN SCHISTOSOMIASIS.pdf?sequence=1&isAllowed=y](https://dspace.uui.ac.id/bitstream/handle/123456789/25859/10-24_Ahmad_Erlan-UPAYA_PENGENDALIAN_SCHISTOSOMIASIS.pdf?sequence=1&isAllowed=y).

Eze JC, Okafor F, Nwankwo NE, Okeke ES & Onwudiwe NN, 2020. Schistosomiasis prevention option: toxicological evaluation of *Vernonia amygdalina* on the tissues of *Bulinus truncatus* at different pH conditions. *Heliyon*, 6(8), p.e04796. Available at: <https://doi.org/10.1016/j.heliyon.2020.e04796>.

Fornillos RJC, Fontanilla IKC, Chigusa Y, Kikuchi M, Kirinoki M, Kato-Hayashi N, et al., 2019. Infection rate of *Schistosoma japonicum* in the snail *Oncomelania hupensis quadrasi* in endemic villages in the Philippines: Need for snail surveillance technique. *Tropical Biomedicine*, 36(2), pp.402–411.

Fu-biao W, Yu-cai M, Le-ping S, Qing-biao H, Yang G, Chang-lin Z, et al., 2016. Integration and demonstration of key techniques in surveillance and fore-cast of schistosomiasis in Jiangsu Province III. *Chin J Schisto Control*, 28(1), pp.5–10.

Garjito TA, Jastal, Mujiyanto, Widjaja J, Udin Y, Maksud M, et al., 2014. Habitats Distribution Of *Oncomelania hupensis lindoensis*, Snail Intermediate Hosts Of *Schistosoma japonicum* In Lindu Valley, Sigi District, Province Of Central Sulawesi. *Buletin Penelitian Kesehatan*, 42(3), pp.139–152.

Ginger Budiono N, Satrija F, Ridwan Y, Nur D & Hasmawati ., 2018. Trematodosis pada sapi, dan kerbau di wilayah Endemik Schistosomiasis di Provinsi Sulawesi Tengah, Indonesia. *Jurnal Ilmu Pertanian Indonesia*, 23(2), pp.112–126.

Gordon CA, Kurscheid J, Williams GM, Clements ACA, Li Y, Zhou XN, et al., 2019. Asian schistosomiasis: Current status and prospects for control leading to elimination. *Tropical Medicine and Infectious Disease*, 4(1).

Gunawan G, Anastasia H, F.S PP & Risti R, 2015. Kontribusi Hewan Mamalia Sapi, Kerbau, Kuda, Babi Dan Anjing Dalam Penularan Schistosomiasis Di Kecamatan Lindu Kabupaten Sigi Propinsi Sulawesi Tengah Tahun 2013. *Media Penelitian dan Pengembangan Kesehatan*, 24(4), pp.209–214.

Hadidjaja P, 1985. *Schistosomiasis di Sulawesi Tengah, Indonesia*, Jakarta: Fakultas Kedokteran Universitas Indonesia.

- Hasibuan NW & Afrianti S, 2020. Kajian Sifat Kimia Tanah Pada Perkebun Sawit Dengan Menggunakan *Mucuna bracteata* PT . PP London Sumatra Indonesia , Tbk Unit. *Agriprimatech*, 4(1), pp.34–41.
- Hyprowira, 2020. 4 faktor yang Berpengaruh Pada pH. *Hyprowira*. Available at: <https://hyprowira.com/blog/faktor-yang-mempengaruhi-ph>.
- Ismail HAHA, Ahmed AEEAERM, Cha S & Jin Y, 2022. The Life Histories of Intermediate Hosts and Parasites of *Schistosoma haematobium* and *Schistosoma mansoni* in the White Nile River, Sudan. *International Journal of Environmental Research and Public Health*, 19(3).
- Jiang N, Li SZ, Zhang YWQ, Habib MR, Xiong T, Xu S, et al., 2022. The identification of alternative oxidase in intermediate host snails of *Schistosoma* and its potential role in protecting *Oncomelania hupensis* against niclosamide-induced stress. *Parasites and Vectors*, 15(1), pp.1–20. Available at: <https://doi.org/10.1186/s13071-022-05227-5>.
- Joof E, Sanneh B, Sambou SM & Wade CM, 2021. Species diversity and distribution of schistosome intermediate snail hosts in the Gambia. *PLoS Neglected Tropical Diseases*, 15(10), pp.1–18. Available at: <http://dx.doi.org/10.1371/journal.pntd.0009823>.
- Jr VYB, de Cadiz AE, Navarro RC, Flores MJC, Molina VB, Dalisay SNM, et al., 2022. The status of schistosomiasis japonica control in the Philippines: The need for an integrated approach to address a multidimensional problem. *International Journal of One Health*, 8(1), pp.8–19.
- Jumriani, Fauzan M, Afuad, Rauf A, Widayati AN, Widjaja J, et al., 2021. *Pemetaan Sebaran Daerah Fokus Keong perantara Schistosomiasi Oncomelania hupensis lindoensis di Kabupaten Poso dan Sigi Sulawesi Tengah*, Donggala.
- Kalinda C, Chimbari MJ & Mukaratirwa S, 2017. Effect of temperature on the *Bulinus globosus* - *Schistosoma haematobium* system. *Infectious Diseases of Poverty*, 6(1), pp.4–10.
- Karimi GR, Derakhshanfar M & Paykari H, 2004. Population density, trematodal infection and ecology of *Lymnaea* Snails in Shadegan , Iran. *Archives of Razi Institute*, 58, pp.125–129.
- Ke W, Tu C, Cao D, Lin X, Sun Q & Zhang Q, 2019. Molluscicidal activity and physiological toxicity of quaternary benzo[c]phenanthridine alkaloids (QBAs) from *Macleaya cordata* fruits on *Oncomelania hupensis*. *PLoS*

Neglected Tropical Diseases, 13(10), pp.1–16.

- Kengne Fokam AC, Sumo L, Bagayan M, Nana-Djeunga HC, Kuete T, Nganjou GSO, et al., 2022. Exposition of Intermediate Hosts of Schistosomes to Niclosamide (Bayluscide WP 70) Revealed Significant Variations in Mortality Rates: Implications for Vector Control. *International Journal of Environmental Research and Public Health*, 19(19).
- Kloos H, De Souza C, Gazzinelli A, Soares Filho BS, Da Costa Temba P, Bethony J, et al., 2001. The Distribution of *Biomphalaria* spp. in Different Habitats in Relation to Physical, Biological, Water Contact and Cognitive Factors in a Rural Area in Minas Gerais, Brazil. *Memorias do Instituto Oswaldo Cruz*, 96(SUPPL.), pp.57–66.
- Leal Neto OB, Gomes EC de S, Oliveira Junior FJM de, Andrade R, Reis DL, Souza-Santos R, et al., 2013. Biological and environmental factors associated with risk of schistosomiasis mansoni transmission in Porto de Galinhas, Pernambuco State, Brazil. *Cadernos de Saúde Pública*, 29(2), pp.357–367.
- Leonardo L, Varona G, Fornillos RJ, Manalo D, Tabios IK, Moendeg K, et al., 2020. *Oncomelania hupensis* quadrasi: Snail intermediate host of *Schistosoma japonicum* in the Philippines. *Acta Tropica*, 210(September 2019), p.105547. Available at: <https://doi.org/10.1016/j.actatropica.2020.105547>.
- Li Yibao, Zhu L, Fan Y, Li Yayun, Cheng L, Liu W, et al., 2016. Formation and controlled drug release using a three-component supramolecular hydrogel for anti-schistosoma japonicum cercariae. *Nanomaterials*, 6(3).
- Liang YS, Wang W, Xing YT, Li HJ, Xu YL, Shen XH, et al., 2011. A strategy for emergency treatment of *Schistosoma japonicum*-infested water. *Parasites and Vectors*, 4(1), pp.1–7.
- Liu MM, Feng Y & Yang K, 2021. Impact of micro-environmental factors on survival, reproduction and distribution of *Oncomelania hupensis* snails. *Infectious Diseases of Poverty*, 10(1), pp.1–10. Available at: <https://doi.org/10.1186/s40249-021-00826-3>.
- Lowe D, Xi J, Meng X, Wu Z, Qiu D & Spear R, 2005. Transport of *Schistosoma japonicum* cercariae and the feasibility of niclosamide for cercariae control. *Parasitology International*, 54(1), pp.83–89.
- Lumeno HH, 1990. *Habitat Siput Oncomelania Hupenolo Lindoensis Sebagai Salah Satu Sasaran Dalam Usaha Pengendalian Penyakit*

Schistosomiassis di Sulawesi Tengah, Institut Pertanian Bogor.

- Madsen H & Stauffer JR, 2011. Density of *Trematocranus placodon* (Pisces: Cichlidae): A predictor of density of the schistosome intermediate host, *bulinus nyassanus* (Gastropoda: Planorbidae), in Lake Malaŵi. *EcoHealth*, 8(2), pp.177–189.
- Manyullei S, Silalahi S, Paluseri AMA, Wahdaniyah I, Waly H, Jabalnur WR, et al., 2022. Environment factors affecting cockroach density: A systematic review. *International Journal of Life Science Research Archive*, 3(1), pp.001–012.
- McCreesh N, Arinaitwe M, Arineitwe W, Tukahebwa EM & Booth M, 2014. Effect of water temperature and population density on the population dynamics of *Schistosoma mansoni* intermediate host snails. *Parasites and Vectors*, 7(1), pp.1–9.
- McCreesh N & Booth M, 2013. Challenges in predicting the effects of climate change on *Schistosoma mansoni* and *Schistosoma haematobium* transmission potential. *Trends in Parasitology*, 29(11), pp.548–555. Available at: <http://dx.doi.org/10.1016/j.pt.2013.08.007>.
- McCreesh N & Booth M, 2014. The effect of increasing water temperatures on *Schistosoma mansoni* transmission and *Biomphalaria pfeifferi* population dynamics: An agent-based modelling study. *PLoS ONE*, 9(7).
- Mereta ST, Bedewi J, Yewhalaw D, Mandefro B, Abdie Y, Tegegne D, et al., 2019. Environmental determinants of distribution of freshwater snails and trematode infection in the Omo Gibe River Basin, southwest Ethiopia. *Infectious Diseases of Poverty*, 8(1), pp.1–10.
- Morley NJ, 2020. This is an Accepted Manuscript for *Parasitology*. This version may be subject to change during the production process. DOI: 10.1017/S0031182020001171. , 44(0).
- Mostafa O, 2009. Effect of salinity and drought on the survival of *Biomphalaria arabica*, the intermediate host of *Schistosoma mansoni* in Saudi Arabia. *Egyptian Academic Journal of Biological Sciences, B. Zoology*, 1(1), pp.1–6.
- Mujiyanto, Triwobowo GA, Hayani A, Yusran U & Ade K, 2016. Kondisi Iklim dan Mikrohabitat Fisik Daerah Endemis Schistosomiasis di Dataran Tinggi Napu Kab.Poso. In *Prosiding Seminar Penginderaan Jauh 2014*. pp. 978–979.

- Muslimin D, 2018. Faktor Risiko Host terhadap Kejadian Schistosomiasis Japonicum. *Afiasi : Jurnal Kesehatan Masyarakat*, 3(3), pp.93–100.
- N'Guessan NAN, Garba A, Orsot MN & Goran EKN, 2014. Evaluation de la morbidité échographique de la bilharziose urinaire chez les écoliers de 6 localités autour du barrage de Taabo (Côte d ' Ivoire). *International Journal of Innovation and Applied Studies*, 9(1), pp.307–316.
- Nelwan ML, 2019. Schistosomiasis: Life Cycle, Diagnosis, and Control. *Current Therapeutic Research*, 91(24), pp.5–9. Available at: <https://doi.org/10.1016/j.curtheres.2019.06.001>.
- Nihei N, Kanazawa T, Blas BL, Saitoh Y, Itagaki H, Pangilinan R, et al., 1998. Soil factors influencing the distribution of *Oncomelania quadrasi* , the intermediate host of *Schistosoma japonicum* , on Bohol Island, Philippines . *Annals of Tropical Medicine & Parasitology*, 92(6), pp.699–710.
- Ningsi, 2022. Strategi Pemberantasan Schistosomiasis Melalui Pendekatan Sosial Budaya di Provinsi Sulawesi Tengah. In *Prosiding Seminar Nasional dan Call for Paper*. pp. 56–66.
- Ningsi N, Veridiana N & Octaviani O, 2021. Penguatan Peran Tokoh Agama Menuju Eliminasi Schistosomiasis Di Dataran Tinggi Bada Kabupaten Poso Sulawesi Tengah. *Prosiding Seminar Nasional Kesehatan Masyarakat Universitas Muhammadiyah Surakarta 2021*, pp.72–85. Available at: <https://publikasiilmiah.ums.ac.id/xmlui/handle/11617/12471>.
- Nurwidayati A, 2016. Modifikasi Lingkungan Untuk Pengendalian Schistosomiasis di Daerah Endemis Sulawesi Tengah. In *Seminar Nasional Pendidikan dan Saintek 2016*. pp. 435–440.
- Nurwidayati A, 2015. Variasi Genus Keong di Daerah Fokus Keong Perantara Schistosomiasis di Dataran Tinggi Lindu, Sulawesi Tengah Snail Genera Variation in Focus Area Of Schistosomiasis Intermediate Snail in Lindu Plateau, Central Sulawesi. *Balaba*, 11(2), pp.59–66.
- Nurwidayati A, Frederika PP & Sudomo M, 2019. Fluktuasi Schistosomiasis di Daerah Endemis Provinsi Sulawesi Tengah Tahun 2011-2018. *Buletin Penelitian Kesehatan*, 47(3), pp.199–206.
- Nurwidayati A, Jastal J, Gunawan G & Murni M, 2016. Efektivitas Pelepasan Itik dalam Pengendalian Keong *Oncomelania hupensis lindoensis* di Daerah Fokus Schistosomiasis Napu, Kabupaten Poso, Sulawesi Tengah. *Buletin Penelitian Kesehatan*, 44(2), pp.109–116.

- Nurwidayati A, Widjaja J, Samarang S, Nurjana MA, Tolistiawaty I & PFS P, 2018. The Density and Infection Rate Of *S. japonicum* Cercariae On Intermediate Snail, *Oncomelania hupensis lindoensis* Towards The Schistosomiasis Infection In Endemic Area, Central Sulawesi. *Buletin Penelitian Kesehatan*, 46(1), pp.69–76.
- Ofulla A V., Adoka SO, Anyona DN, Abuom PO, Karanja D, Vulule JM, et al., 2013. Spatial distribution and habitat characterization of schistosomiasis host snails in lake and land habitats of western Kenya. *Lakes and Reservoirs: Research and Management*, 18(2), pp.197–215.
- Opisa S, Odiere MR, Jura WGZO, Karanja DMS & Mwinzi PNM, 2011. Malacological survey and geographical distribution of vector snails for schistosomiasis within informal settlements of Kisumu City, western Kenya. *Parasites and Vectors*, 4(1), pp.1–9.
- Pawakkangi S, Nurwidayati A, Sumolang PPF, Lobo LT, Gunawan G & Murni M, 2018. Focus Conditions of Schistosomiasis *Oncomelania hupensis lindoensis* in Four Villages Integration Area of Cross Sectoral Program, Central Sulawesi. *Balaba: Jurnal Litbang Pengendalian Penyakit Bersumber Binatang Banjarnegara*, 14 No 2, pp.117–126.
- Poso BPSK, 2022. *Kecamatan Lore Utara Dalam Angka BPS Poso*, ed., Poso: BPS Poso. Available at: <http://journal.um-surabaya.ac.id/index.php/JKM/article/view/2203>.
- Pratumchart K, Suwannatrai K, Sereewong C, Thinkhamrop K, Chaiyos J, Boonmars T, et al., 2019. Ecological Niche Model based on Maximum Entropy for mapping distribution of *Bithynia siamensis goniomphalos*, first intermediate host snail of *Opisthorchis viverrini* in Thailand. *Acta Tropica*, 193(October 2018), pp.183–191. Available at: <https://doi.org/10.1016/j.actatropica.2019.03.004>.
- Qiang Z, Li WAN, Qi YOU, Jun YOU, De H & Yi H, 2018. Field molluscicidal effect of water-free formulations of niclosamide ethanol-amine salt against *Oncomelania hupensis* snails in a marshland. *Chin J Schisto Control*, 30(4), pp.443–445.
- Rafizar & Sudomo M, 2019. Penyakit zoonosis dengan perhatian khusus pada Schistosomiasis *japonicum*: sebuah tinjauan. *Berita Kedokteran Masyarakat*, 35(7), pp.237–244.
- Rahmawati Y, 2022. Pola Penggunaan dan Efektivitas Obat Praziquantel pada Penderita Schistosomiasis. *Jurnal Ilmiah Indonesia*, Volume 7 N, pp.12324–12330.

- Rosmini R, Garjito TA, Erlan A & Gunawan G, 2014. Infection Rate of The Intermediate Host and The Prevalence of *Schistosoma Japonicum* reservoirs in Bada Highland Sulawesi Tengah. *Jurnal Ekologi Kesehatan*, 13(1), pp.43–49.
- Rosmini, Soeyoko & Sumarni S, 2010. Penularan Schistosomiasis di Desa Dodolo dan Mekarsari Dataran Tinggi Napu Sulawesi tengah. *Media Litbang Kesehatan*, XX, pp.113–117.
- Rupawan IK, 2019. *Hubungan Lingkungan Fisik dan Biologi dengan Kepadatan Keong Oncomelania hupensis lindoensis di Napu, Sulawesi Tengah dan Status Kerentanan Terhadap Niklosamide*. Available at: http://www.scopus.com/inward/record.url?eid=2-s2.0-84865607390&partnerID=tZOtx3y1%0Ahttp://books.google.com/books?hl=en&lr=&id=2LIMMD9FVXkC&oi=fnd&pg=PR5&q=Principles+of+Digital+Image+Processing+fundamental+techniques&ots=HjrHeuS_.
- Sheng-Bang Z, Lin-Han LI, Yi-Biao Z, Jin-Yi WU, Xiu-Xia S, Zhong HE, et al., 2014. Contrastive analysis of environmental factors between *Oncomelania hupensis* snail marshland and snail natural death marshland in Eastern Dongting Lake schistosomiasis endemic areas. *Chinese Journal of Schistosomiasis Control*, 26(2), pp.121–126.
- Siahaan HA, 2020. *Studi Akselerasi Pencapaian Eliminasi Schistosomiasis di Daerah Endemis Tahun 2020*, Donggala.
- Stang, 2018. *Cara Praktis Penentuan Uji Statistik dalam Penelitian Kesehatan dan Kedokteran* 2nd ed., Makassar: Mitra Wacana Media.
- Sudomo M, 2008. Penyakit parasitik yang kurang diperhatikan di Indonesia, Makalah Orasi Pengukuhan Gelar Profesor Riset bidang Entomologi dan Moluska.
- Sudomo M & Pretty M.D S, 2007. Schistosomiasis Control In Indonesia. *Buletin Penelitian Kesehatan*, 35, pp.36–45.
- Sugiyono, 2017. *Metode Penelitian Kuantitatif*, Bandung: Alfabeta.
- Supriatna S, Siahaan S & Restiaty I, 2021. Pencemaran Tanah Oleh Pestisida Di Perkebunan Sayur Kelurahan Eka Jaya Kecamatan Jambi Selatan Kota Jambi (Studi Keberadaan Jamur Makroza dan Cacing Tanah). *Jurnal Ilmiah Universitas Batanghari Jambi*, 21(1), p.460.
- Syam DM, Bungawati A & Faisal E, 2018. Hubungan Upaya Pengendalian

- Terhadap Kasus Schistosomiasis di Dataran Tinggi Lindu Kabupaten Sigi. *HIGIENE: Jurnal Kesehatan Lingkungan*, 4(1), pp.54–61.
- Tandi J, 2018. Pola Pengobatan Penderita Schistosomiasis (Penyakit Demam Keong) Di Desa Kaduwaa Kecamatan Lore Utara Kabupaten Poso Propinsi Sulawesi Tengah. *Jurnal Sains dan Kesehatan*, 1(9), pp.456–464.
- Veridiana NN & Chadijah S, 2013. Faktor-faktor yang berhubungan dengan Penularan Schistosomiasis di Dua Desa di Dataran Tinggi Napu Kabupaten Poso, . *Media Litbang*, 23(3), pp.130–136.
- Walz Y, Wegmann M, Dech S, Vounatsou P, Poda JN, N’Goran EK, et al., 2015. Modeling and Validation of Environmental Suitability for Schistosomiasis Transmission Using Remote Sensing. *PLoS Neglected Tropical Diseases*, 9(11), pp.1–22.
- Wang W, Zhang X, Zhang H, Hu H, Li S, Liu X, et al., 2017. Field evaluation of a novel molluscicide (niclosamidate) against *Oncomelania hupensis*, intermediate host of *Schistosoma japonicum*. *Parasitology Research*, 116(12), pp.3423–3427.
- Widjaja J, Anastasia H, Widayati AN, Samarang, Nurjana MA, Mujiyanto, et al., 2019. *Fokus Keong Perantara Schistosomiasis serta Rencana Aksi Pengendalian Dalam Rangka Eliminasi Schistosomiasis 2020*,
- Widjaja J, Anastasis H, Nurwidayati A, Nurjana MA, Mujiyanto M & Maksud M, 2017. Situasi Terkini Daerah Fokus Keong Hospes Perantara di Daerah Endemis Schistosomiasis di Sulawesi Tengah. *Buletin Penelitian Kesehatan*, 45(4), pp.215–222.
- Xing Y-T, Dai J-R, Yang K, Jiang T, Jiang C-G, Mohammed SJ, et al., 2021. *Bulinus Snails Control by China-made Niclosamide in Zanzibar: Experiences and Lessons*. K. Yang & H. Mehlhorn, eds. *Sino-African Cooperation for Schistosomiasis Control in Zanzibar*, pp.147–159.
- Yang GJ, Utzinger J, Sun LP, Hong QB, Vounatsou P, Tanner M, et al., 2007. Effect of temperature on the development of *Schistosoma japonicum* within *Oncomelania hupensis*, and hibernation of *O. hupensis*. *Parasitology Research*, 100(4), pp.695–700.
- Yang X, Zhang Q, Ma L, Sun QX, Liang S & Zhou JX, 2021. Afforestation suppresses *oncomelania hupensis* snail density through influencing algae in beaches of the dongting lake. *PLoS Neglected Tropical Diseases*, 15(2), pp.1–17. Available at:

<http://dx.doi.org/10.1371/journal.pntd.0009100>.

Zheng-long L, Li-juan Z, Zhi-min X, Hui D, Jing X, Shan L, et al., 2015. Endemic status of schistosomiasis in People's Republic of China in 2014. *Chin J Schisto Control*, 27(6), pp.563–569.

Lampiran.

Hasil Analisis SPSS

Kepadatan Keong *O. hupensis lindoensis*

Statistics

		Kepadatan_PreS urvey	Kepadatan_Post Survey1	Kepadatan_Post Survey2
N	Valid	14	14	14
	Missing	0	0	0
Mean		202.07	54.07	20.64
Median		144.50	46.00	2.00
Std. Deviation		162.051	48.485	25.859
Minimum		18	0	0
Maximum		415	163	76

Ranks

	Mean Rank
Kepadatan_PreSurvey	2.93
Kepadatan_PostSurvey1	2.00
Kepadatan_PostSurvey2	1.07

Test Statistics^a

N	14
Chi-Square	26.000
df	2
Asymp. Sig.	.000

a. Friedman Test

Infection Rate Keong *O. hupensis lindoensis*

Statistics

		IR_PreSurvey	IR_PostSurvey1	IR_PostSurvey2
N	Valid	14	14	14
	Missing	0	0	0
Mean		7.1429	4.3571	.1429
Median		1.5000	.0000	.0000
Std. Deviation		13.97722	16.01733	.53452
Minimum		.00	.00	.00
Maximum		50.00	60.00	2.00

Ranks

	Mean Rank
IR_PreSurvey	2.54
IR_PostSurvey1	1.75
IR_PostSurvey2	1.71

Test Statistics^a

N	14
Chi-Square	12.071
df	2
Asymp. Sig.	.002

a. Friedman Test

Keaktifan Habitat Keong *O. hupensis lindoensis*

Keaktifan_PreSurvey

		Frequency	Percent	Valid Percent	Cumulative Percent
Valid	Aktif	8	57.1	57.1	57.1
	Tidak Aktif	6	42.9	42.9	100.0
	Total	14	100.0	100.0	

Keaktifan_PostSurvey1

		Frequency	Percent	Valid Percent	Cumulative Percent
Valid	Aktif	2	14.3	14.3	14.3
	Tidak aktif	12	85.7	85.7	100.0
	Total	14	100.0	100.0	

Keaktifan_PostSurvey2

		Frequency	Percent	Valid Percent	Cumulative Percent
Valid	Aktif	1	7.1	7.1	7.1
	Tidak aktif	13	92.9	92.9	100.0
	Total	14	100.0	100.0	

Frequencies

	Value	
	1	2
Keaktifan_PreSurvey	8	6
Keaktifan_PostSurvey1	2	12
Keaktifan_PostSurvey2	1	13

Test Statistics

N	14
Cochran's Q	10.750 ^a
df	2
Asymp. Sig.	.005

a. 1 is treated as a success.

Foto Kegiatan Di Lapangan

Habitat Keong *O. hupensis lindoensis* di Saluran Air Perkebunan Coklat



Habitat Keong *O. hupensis lindoensis* di Saluran Air Perkebunan Jagung



Habitat Keong *O. hupensis lindoensis* di Parapa dan Sawah Yang Terbenkakai



Tim Penyemprotan



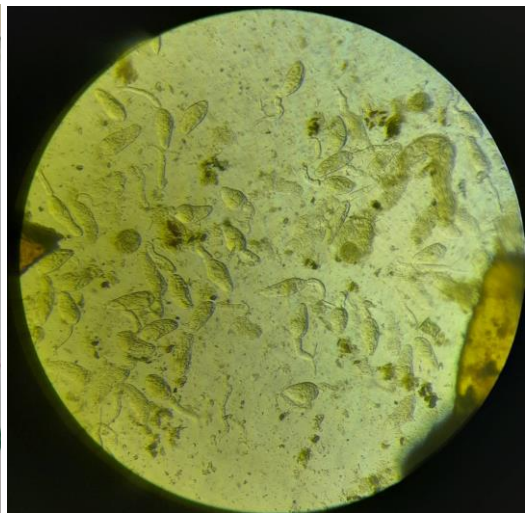
Pengukuran Karakteristik Lingkungan Habitat Keong *O. hupensis lindoensis*



Penyemprotan di Lapangan



Keong *O. hupensis lindoensis*



Survey Keong

