

DAFTAR PUSTAKA

- Afrizal, A., Mayesti, I., & Irmanelly. (2021). Analisis Konsumsi Rumah Tangga, Struktur Ekonomi Dan Pertumbuhan Ekonomi Indonesia Periode 2000-2019. *Jurnal Development*, 9(1).
- Agustina, E. (2019). *Pengaruh Pengeluaran Pemerintah, Tenaga Kerja dan Kontribusi Industri Pengolahan Terhadap Pertumbuhan Ekonomi Jawa Barat*.
- Alfaris Kurniawan, M. (2021). *Perbandingan Metode Estimasi Non-Accelerating Inflation Rate of Unemployment (NAIRU) Malaysia*.
- Alzaidy, G., Bin, N., Ahmad, N., & Lacheheb, Z. (2017). The Impact of Foreign-direct Investment on Economic Growth in Malaysia: The Role of Financial Development. *International Journal of Economics and Financial Issues*, 7(3), 382–388. <http://www.econjournals.com>
- Arsyad, Lincolin. (2010). *Ekonomi Pembangunan*. Yogyakarta: Unit Penerbit dan Percetakan STIM YKPN Yogyakarta.
- Ashakah, F. O. (2019). The Determinants of Aggregate Consumption Expenditure: Empirical Evidence from Nigeria. In *Journal Homepage: International Journal of Research in Social Sciences* (Vol. 9). <http://www.ijmra.us>, <http://www.ijmra.us>,
- Asri, & Mansyur. (2022). Apakah Kurva Phillips Eksis Pada Perekonomian Indonesia di Masa Pandemi Covid-19? *Journal of Business and Economics Research (JBE)*, 3(1), 37–43. <https://doi.org/10.47065/jbe.v3i1.1668>
- Asrinda, D., Iriani, R., & Setiawati, S. (2022). *Pengaruh Investasi Asing, Ekspor Neto dan Tenaga Kerja Terhadap Pertumbuhan Ekonomi Indonesia* (Vol. 11, Issue 2).
- Attari, M. I. J., & Javed, A. Y. (2013). Inflation, Economic Growth and Government Expenditure of Pakistan: 1980-2010. *Procedia Economics and Finance*, 5, 58–67. [https://doi.org/10.1016/s2212-5671\(13\)00010-5](https://doi.org/10.1016/s2212-5671(13)00010-5)
- Ayew, B. B. (2022). The effect of foreign direct investment on the economic growth of Sub-Saharan African countries: An empirical approach. *Cogent Economics and Finance*, 10(1). <https://doi.org/10.1080/23322039.2022.2038862>
- Barro, R. J. (1990). Government Spending in a Simple Model of Endogeneous Growth. *Journal of Political Economy*, 98(5, Part 2), S103–S125. <https://doi.org/10.1086/261726>
- Boediono. (2018). *Pengantar Ilmu Ekonomi No. 1: Ekonomi Mikro*. Yogyakarta: Penerbit BPF.

- Badan Pusat Statistik (BPS) 2022. Nasional.
- Case, K. E., Fair, R. C., & Oster, S. M. (2014). *Principles of Macroeconomics Eleventh Edition*. www.myeconlab.com
- Chai, A. (2018). *Household Consumption Patterns And The Sectoral Composition of Growing Economies: A Review of The Interlinkages Inclusive and Sustainable Industrial Development Working Paper Series WP 3 | 2018*.
- Corolina, N. N., & Panjawa, J. L. (2020). Determinan Tingkat Pengangguran: Studi Kasus Wilayah Pengembangan Purwomanggung, Jawa Tengah. *Jurnal Ekonomi Pembangunan*, 9(1), 45–55. <https://doi.org/10.23960/jep.v9i1.77>
- Danang, Sunyoto. (2012). *Manajemen Sumber Daya Manusia*. Jakarta: PT Buku Seru.
- Daniel, S. U., Israel, V. C., Chidubem, C. B., & Quansah, J. (2021). Relationship Between Inflation and Unemployment: Testing Philips Curve Hypotheses and Investigating the Causes of Inflation and Unemployment in Nigeria. *Path of Science*, 7(9), 1013–1027. <https://doi.org/10.22178/pos.74-13>
- Elkayam, D., & Ilek, A. (2016). Estimating The NAIRU for Israel, 1992–2013. In *Israel Economic Review* (Vol. 14, Issue 1).
- Fajar, M. (2017). Estimasi NAIRU Indonesia (Pendekatan Ball-Mankiw). *Universitas Padjajaran*. <https://doi.org/10.13140/RG.2.2.13753.36963>
- Fitrawaty, F. (2018). Keterkaitan Instrumen Kebijakan Moneter dengan Tingkat Pengangguran. *Economics Development Analysis Journal*, 7(4), 421-431.
- Fitriana, N. A., & Maski, G. (2020). Effectiveness of Monetary Transmission Mechanism of Interest Transmission Policy: Investigation of NAIRU (Non-accelerating Inflation Rate of Unemployment) as an Alternative Target of Monetary Policy in Indonesia. *International Journal of Economics, Business and Management Research*, Vol.4(10), 2456–7760. www.ijebmr.com
- Fitriani, M., Aula, S., Hafidh, A., & Fikri, S. (2016). *Analisis Pengaruh Ekspor, Pembentukan Modal, Dan Pengeluaran Pemerintah Terhadap Pertumbuhan Ekonomi Indonesia*.
- Ganar, Y. B., Zulfitra, Z., & Sampurnaningsih, S. R. (2021). Pengaruh Nilai Investasi, Tenaga Kerja dan Pengeluaran Pemerintah terhadap Pertumbuhan Ekonomi Indonesia Periode 1999-2019. *Jurnal Disrupsi Bisnis : Jurnal Ilmiah Prodi Manajemen, Fakultas Ekonomi, Universitas Pamulang*, 4(1), 44. <https://doi.org/10.32493/drj.v4i1.9120>

- Galbraith, James K. (1997). "Time to Ditch the NAIRU." *Journal of Economic Perspectives*, 11 (1): 93-108.
- Ginting, A. M. (2013). *Prosespek Pertumbuhan Ekonomi Indonesia 2013: Suatu Analisis Pengaruh Pengeluaran Pemerintah, Konsumsi, dan Ekspor Indonesia Terhadap Pertumbuhan Ekonomi Indonesia*. <http://bisniskeuangan.kompas.com/read/2009/>
- Haniko, V. S., Engka, D. S. M., & Rorong, I. P. F. (2022). Pengaruh Konsumsi Rumah Tangga, Jumlah Ekspor, dan Pengeluaran Pemerintah Terhadap Pertumbuhan Ekonomi Sulawesi Utara. *Jurnal Berkata Ilmiah Efisiensi*, Vol. 22(2).
- Hanusch, M. (2013). Jobless Growth? Okun's Law In East Asia. *Journal of International Commerce, Economics and Policy*, 04(03), 1350014. <https://doi.org/10.1142/s1793993313500142>
- Hasnul, G. al. (2015). *The effects of government expenditure on economic growth: the case of Malaysia*.
- Herdanti Resagi, M., & Pratiwik, E. (2020). *The Determinants of Consumption in Indonesia 2010-2018*. 3(3). <https://doi.org/10.15294/efficient.v3i3.43514>
- Husin. (2022). Pengaruh Konsumsi Rumah Tangga, Pengeluaran Pemerintah dan Perdagangan Internasional Terhadap Pertumbuhan Ekonomi. *Jurnal Cafeteria*, Vol. 3(2), 101–110.
- IMF. (2021). Public Expenditure and Inclusive Growth – A Survey. IMF Working Paper, hal.75.
- Ichvani, L. F., & Sasana, H. (2019). Jurnal REP (Riset Ekonomi Pembangunan) Effect Of Corruption, Consumption, Government Expenditure And Trade Opening On Economic Growth In Asean 5. *Riset Ekonomi Pembangunan*, 4(1), 2508–0205. <http://jurnal.untidar.ac.id/index.php/REP>
- Jacob, P., & Wong, M. (2018). *Estimating the NAIRU and the Natural Rate of Unemployment for New Zealand*.
- Jirang, P. A., Musa, A. H., & Wijaya, A. (2018). Pengaruh Pengeluaran Pemerintah dan Investasi Swasta Terhadap Pertumbuhan Ekonomi dan Pengangguran di Provinsi Kalimantan Timur. *Jurnal Ilmu Ekonomi Mulawarman*, Vol. 3(4).
- Johan, K., Marwoto, P. B., & Pratiwi, D. (2016). Analisis Pengaruh Pertumbuhan Ekonomi, Inflasi dan Investasi Terhadap Pengangguran di Indonesia. *Jurnal Ilmiah Progresif Manajemen Bisnis (JIPMB)*, Vol. 13(2), 1–13.

- Jufrida, F., Nur Syechalad, M., & Nasir, M. (2016). *Analisis Pengaruh Investasi Asing Langsung (FDI) dan Investasi Dalam Negeri Terhadap Perumbuhan Ekonomi Indonesia*. 2(1).
- Juneldi, J., & Sentosa, S. U. (2022). *Efek Variabel Kebijakan Moneter Dan Fiskal Terhadap Inflasi, Pertumbuhan Ekonomi Dan Tingkat Pengangguran Di Indonesia*.
<http://ejournal.unp.ac.id/students/index.php/epb/index>
- Kementerian Keuangan Negara. (2022). Nasional
- Magdalena, S., & Suhatman, R. (2020). The Effect of Government Expenditures, Domestic Investment, Foreign Investment to the Economic Growth of Primary Sector in Central Kalimantan. *Budapest International Research and Critics Institute (BIRCI-Journal): Humanities and Social Sciences*, 3(3), 1692–1703. <https://doi.org/10.33258/birci.v3i3.1101>
- Manap, A., Mohammad, P., Hafiz, R., Riza, A., & Pujarama, A. (2018). Mengapa Kontribusi Pemerintah pada ekonomi rendah? In *INDEF Monthly Policy Brief* | (Vol. 1).
- Mankiw, Gregory N. (2003). *Teori Makro Ekonomi Terjemahan*. Jakarta: PT. Gramedia Pustaka Utama.
- Mankiw, Gregory N. (2012). *Principle of Micro Economic*, jilid 1, edisi Asia. Jakarta: Salemba Empat.
- Mankiw, N. G. (2013.). *Pengantar Ekonomi Makro*. Jakarta: Penerbit Salemba Empat.
- Mehmood, R., & Sadiq, S. (2010). The Relationship between Government Expenditure and Poverty: A Cointegration Analysis. In *Romanian Journal of Fiscal Policy* (Vol. 1, Issue 1).
- Mishkin, F.S. (2012). *Macroeconomics Policy and Practice*, Pearson, Boston.
- Mohsen, A. S. (2015). Effects of Exports and Investment on the Economic Growth in Syria. *International Journal of Management, Accounting and Economics*, 2(6), 527–537. www.ijmae.com
- Mustika, C. (2018). *Analisis pengaruh ekspor ke China terhadap tingkat pengangguran di dua Negara di Kawasan Selat Malaka (Indonesia dan Malaysia)* (Vol. 13, Issue 1).
- Mustika, C., Umiyati, E., & Achmad, E. (2015). Analisis Pengaruh Ekspor Neto Terhadap Nilai Tukar Dolar Amerika Serikat dan Pertumbuhan Ekonomi di Indonesia. In *Jurnal Paradigma Ekonomika* (Vol. 10, Issue 2).
- Nasution, L. N., & Yusuf, M. (2018). Analisis Konsumsi, Ekspor, dan Pertanian Terhadap Pertumbuhan Ekonomi di Sumatera Utara. *Jurnal Kajian Ekonomi Dan Kebijakan Publik*, Vol.3 No.2, 2527–2772.
- Nopirin. (1997). *Ekonomi Moneter I*. Universitas Terbuka: Jakarta.

- Padli, Hailuddin, & Wahyunadi. (2020). Pengaruh Pengeluaran Konsumsi Rumah Tangga, Investasi Swasta dan Belanja Langsung Pemerintah Daerah Terhadap Pertumbuhan Ekonomi di Kabupaten Lombok Timur Tahun 2001-2017. *Majalah Ilmiah UNIKOM*, Vol.17 No.2, 122–130.
- Pramesti, D. A. D. G., & Yasa, I. N. M. (2019). Pengaruh Investasi dan Inflasi Terhadap Pertumbuhan Ekonomi dan Ketimpangan Distribusi Pendapatan di Kabupaten Klungkung. *E-Jurnal Ekonomi Pembangunan Universitas Udayana*, Vol. 8(11), 2562–2590.
- Pridayanti, A. (2014). Pengaruh Ekspor, Impor, dan Nilai Tukar Terhadap Pertumbuhan Ekonomi di Indonesia Periode 2002-2012. *Jurnal Pendidikan Ekonomi*, 2(2).
- Ramzan, M. (2021). Impact of Inflation and Unemployment on Economic Growth of Pakistan. *European Journal of Business and Management Research*, 6(4), 282–288. <https://doi.org/10.24018/ejbmr.2021.6.4.993>
- Riyad, M. (2012). *Faktor-Faktor Yang Mempengaruhi Pertumbuhan Ekonomi di Enam Negara ASEAN Tahun 1990-2009*.
- Seran, S. (2017). Hubungan Antara Pendidikan, Pengangguran, dan Pertumbuhan Ekonomi Dengan Kemiskinan. *Jurnal Ekonomi Kuantitatif Terapan*, Vol. 10(2), 1–13.
- Shaheen, F., Haider, A., & Javed, S. A. (2011). Estimating Pakistan's Time Varying Non-Accelerating Inflation Rate of Unemployment: An Unobserved Component Approach. *International Journal of Economics and Financial Issues*, 1(4), 172–179.
- Siregar, I. M., Pratiwi, I., & Sinaga, S. (2019). Pengaruh Ekspor Terhadap Pertumbuhan Ekonomi di Indonesia Periode Tahun 2013-2017. *Jurnal Ekonomi Pendidikan*, Vol. 7(2), 2614–2295.
- Sugiyono. (2017). *Metode Penelitian Kuantitatif, Kualitatif, dan R&D*. Bandung: Alfabeta, CV.
- Sujarweni, V. Wiratna. (2015). *Metodologi Penelitian Bisnis Dan Ekonomi*, 33. Yogyakarta: Pustaka Baru Press.
- Sukirno, Sadono. (2013). *Makro Ekonomi, Teori Pengantar*. Penerbit PT. Raja Grafindo Persada, Jakarta.
- Stratmann, T., & Okolski, G. (2010). *working paper CiviC PartiCiPation and Government SPendinG Civic Participation and Government Spending*.
- Sukanto. (2015). Fenomena Inflasi, Pengangguran dan Pertumbuhan Ekonomi di Indonesia: Pendekatan Kurva Philips dan Hukum Okun. *Jurnal Ekonomi Pembangunan*, Vol. 32(2), 96–106.
- Taufik, M., Rochaida, E., & Fitriadi. (2014). *Pengaruh Investasi Dan Ekspor Terhadap Pertumbuhan Ekonomi Serta Penyerapan Tenaga Kerja Provinsi Kalimantan Timur Eny Rochaida Fitriadi*.

- Tumbel, S. D. A., Rosalina A.M. Koleangan, & Daisy S.M. Engka. (2018). Belanja Pemerintah dan Investasi Terhadap Pertumbuhan Ekonomi dan Dampaknya Terhadap Pengangguran di Kabupaten Minahasa Selatan. *Jurnal Pembangunan Ekonomi Dan Keuangan Daerah*, Vol. 19(1).
- Turan, G., & Karamanaj, B. (2014). An Empirical Study on Import, Export and Economic Growth in Albania. *Academic Journal of Interdisciplinary Studies*. <https://doi.org/10.5901/ajis.2014.v3n3p428>
- Todaro, Michael. (2004). *Pembangunan Ekonomi di Dunia Ketiga*. Penerbit Erlangga Edisi Kedelapan.
- Todaro, M. P., & Smith, S. C. (2012). *Economic Development*, Eleven Edition.
- Todaro, P Michael. (2011). *Pembangunan Ekonomi*. Jakarta: Erlangga.
- Undang-Undang Nomor 25 Tahun 2007 Tentang Penanaman Modal
- Varlina, I., & Amar, S. B. (2019). *Pengaruh Investasi Asing (FDI), Konsumsi Rumah Tangga, Pengeluaran Pemerintah Terhadap Perekonomian Indonesia*.
- Wahana, A. (2020). Pengaruh Investasi, Tenaga Kerja, dan Pengeluaran Pemerintah Terhadap Pertumbuhan Ekonomi di Provinsi Sulawesi Selatan. *Jurnal Kritis*, Vol. 4(2), 2579–7875.
- Yigit, O., & Gokce, A. (2012). *Turkiye Ekonomisi Icin NAIRU Tahmini*.
- Zamzami, Dwi, H., & Sunargo. (2020). Pengaruh ekspor Asia Timur terhadap pengangguran di Indonesia. In *Jurnal Paradigma Ekonomika* (Vol. 15, Issue 1).
- Zulhanafi, Aimon, H., & Syofyan, E. (2013). *Analisis Faktor-Faktor Yang Mempengaruhi Produktivitas dan Tingkat Pengangguran di Indonesia*.

LAMPIRAN

Lampiran 1. PMA, Konsumsi, Pengeluaran Pemerintah, Ekspor Neto dan NAIRU Tahun 1997-2021

Tahun	PMA (Juta USD)	Konsumsi Rumah Tangga (Juta USD)	Pengeluaran Pemerintah (Milyar)	Ekspor Neto (Juta USD)	NAIRU (Persen)
1997	1286.8	2533929.63	92804.38	11764	6.39
1998	4802.7	2377628.81	167555.5	21511	6.5
1999	8221	2487790.28	229109	24662	6.37
2000	15420	2527173.18	282585.8	28609	6.54
2001	15055.9	2615476.06	341563	25359	6.87
2002	9789.1	2715801.02	322180	25870	7.25
2003	13207.2	2821524.26	376505	28508	7.64
2004	10279.8	2961674.10	427177	25060	7.99
2005	8916.9	3078759.91	509632	27959	8.2
2006	5977	3176457.97	667129	39733	8.24
2007	10341.4	3335495.02	757650	39628	8.17
2008	14871.4	3513482.05	985731	7823	7.99
2009	10815.2	3684200.19	937382	19681	7.71
2010	16214.8	3858821.77	1042117	22116	7.4
2011	19474.5	4054078.89	1294999	26061	7.02
2012	24564.7	4277706.22	1491410	-1669	6.61
2013	28617.5	4512034.91	1650564	-4077	6.15
2014	28529.6	4750438.44	1777183	-2198	5.64
2015	29275.9	4980430.66	1806515	7672	5.1
2016	28964.1	5231670.24	1864275	9481.2	4.57
2017	32239.8	5492292.99	2007352	11843	5.9
2018	29307.91	5774426.11	2213118	-8699.2	5.89
2019	28208.76	6072426.87	2309287	-3044.4	5.4
2020	28666.27	5910472.10	2595481	21739	4.78
2021	31093.07	6029014.19	2697237	35419.6	5.23

Lampiran 2. PDB dan Pertumbuhan Ekonomi Indonesia Tahun 1997-2021

Tahun	PDB (Milyar)	Pertumbuhan Ekonomi (Persen)
1997	1512780.23	4.7
1998	1314201.74	-13.13
1999	1324598.78	0.79
2000	1389769.9	4.92
2001	1440405.7	3.64
2002	1505216.4	4.5
2003	1577171.3	4.78
2004	1656516.7	5.03
2005	1750815.2	5.69
2006	1847126.7	5.5
2007	1964327.3	6.35
2008	2082456.1	6.01
2009	2178850.4	4.63
2010	2314458.8	6.22
2011	2464566.1	6.17
2012	2618938.4	6.03
2013	8158194	5.56
2014	8568116	5.01
2015	9912704	4.88
2016	9434613	5.03
2017	9912928	5.07
2018	10425852	5.17
2019	10949038	5.02
2020	10722423	-2.07
2021	11118868	3.69

Lampiran 3 Hasil Olah Data

1. Hasil Output Persamaan

Dependent Variable: Y1
 Method: Least Squares
 Date: 12/16/22 Time: 13:58
 Sample: 1997 2021
 Included observations: 25

Variable	Coefficient	Std. Error	t-Statistic	Prob.
C	105.8678	14.87580	7.116785	0.0000
X1	-1.285600	0.334794	-3.839977	0.0010
X2	-8.598684	1.300742	-6.610602	0.0000
X3	3.121176	0.541737	5.761424	0.0000
X4	0.083969	0.146604	0.572757	0.5732

R-squared	0.788210	Mean dependent var	6.622000
Adjusted R-squared	0.745851	S.D. dependent var	1.125855
S.E. of regression	0.567579	Akaike info criterion	1.881983
Sum squared resid	6.442920	Schwarz criterion	2.125758
Log likelihood	-18.52479	Hannan-Quinn criter.	1.949596
F-statistic	18.60824	Durbin-Watson stat	1.260797
Prob(F-statistic)	0.000002		

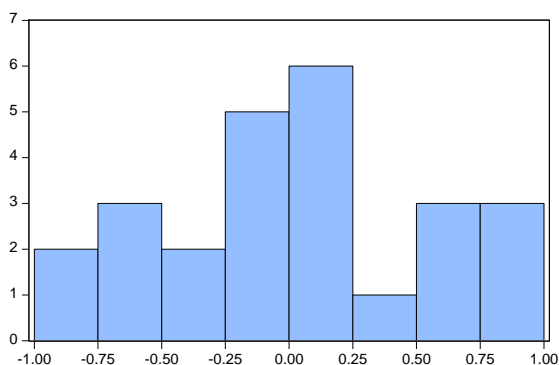
2. Hasil Output Persamaan 2

Dependent Variable: Y2
 Method: Least Squares
 Date: 12/23/22 Time: 10:42
 Sample: 1997 2021
 Included observations: 25

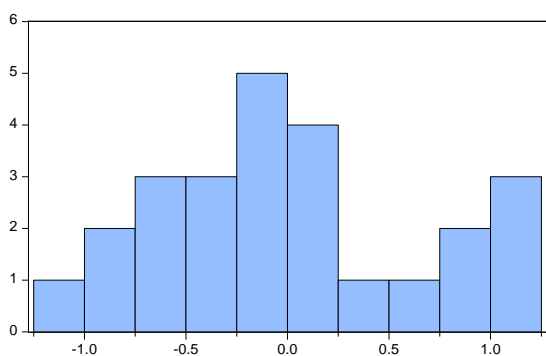
Variable	Coefficient	Std. Error	t-Statistic	Prob.
C	-20.63069	10.49470	-1.965820	0.0641
X1	0.080489	0.165640	0.485929	0.6326
X2	2.565332	0.871363	2.944046	0.0083
X3	-0.197977	0.331633	-0.596977	0.5576
X4	-0.012179	0.055479	-0.219516	0.8286
Y1	-0.176397	0.083934	-2.101610	0.0492

R-squared	0.951806	Mean dependent var	15.00329
Adjusted R-squared	0.939124	S.D. dependent var	0.863487
S.E. of regression	0.213049	Akaike info criterion	-0.049026
Sum squared resid	0.862407	Schwarz criterion	0.243504
Log likelihood	6.612830	Hannan-Quinn criter.	0.032109
F-statistic	75.04855	Durbin-Watson stat	1.338119
Prob(F-statistic)	0.000000		

2. Hasil Uji Asumsi Klasik



Series: Residuals	
Sample 1997 2021	
Observations 25	
Mean	-6.70e-15
Median	0.029127
Maximum	0.813337
Minimum	-0.899773
Std. Dev.	0.518126
Skewness	0.048687
Kurtosis	1.949663
Jarque-Bera	1.159051
Probability	0.560164



Series: Residuals	
Sample 1997 2021	
Observations 25	
Mean	9.24e-15
Median	-0.088390
Maximum	1.049362
Minimum	-1.044591
Std. Dev.	0.606720
Skewness	0.324649
Kurtosis	2.136536
Jarque-Bera	1.215789
Probability	0.544496

Heteroskedasticity Test: Glejser
Null hypothesis: Homoskedasticity

F-statistic	2.468992	Prob. F(5,19)	0.0695
Obs*R-squared	9.846048	Prob. Chi-Square(5)	0.0797
Scaled explained SS	7.038635	Prob. Chi-Square(5)	0.2178

Test Equation:
Dependent Variable: ARESID
Method: Least Squares
Date: 12/16/22 Time: 14:13
Sample: 1997 2021
Included observations: 25

Variable	Coefficient	Std. Error	t-Statistic	Prob.
C	28.37375	15.28931	1.855790	0.0791
X1	-0.334601	0.241314	-1.386583	0.1816
X2	-2.340409	1.269454	-1.843635	0.0809
X3	0.819095	0.483143	1.695348	0.1063
X4	0.190412	0.080826	2.355830	0.0294
Y1	-0.334538	0.122280	-2.735830	0.0131

R-squared	0.393842	Mean dependent var	0.482283
Adjusted R-squared	0.234327	S.D. dependent var	0.354712
S.E. of regression	0.310383	Akaike info criterion	0.703541
Sum squared resid	1.830409	Schwarz criterion	0.996071
Log likelihood	-2.794259	Hannan-Quinn criter.	0.784676
F-statistic	2.468992	Durbin-Watson stat	1.719181
Prob(F-statistic)	0.069499		

Breusch-Godfrey Serial Correlation LM Test:
Null hypothesis: No serial correlation at up to 2 lags

F-statistic	1.201110	Prob. F(2,17)	0.3251
Obs*R-squared	3.095291	Prob. Chi-Square(2)	0.2127

Test Equation:
Dependent Variable: RESID
Method: Least Squares
Date: 12/16/22 Time: 14:14
Sample: 1997 2021
Included observations: 25
Presample missing value lagged residuals set to zero.

Variable	Coefficient	Std. Error	t-Statistic	Prob.
C	-2.874249	33.55685	-0.085653	0.9327
X1	-0.010287	0.525191	-0.019587	0.9846
X2	0.371217	2.787598	0.133167	0.8956
X3	-0.102631	1.057159	-0.097081	0.9238
X4	-0.167919	0.216500	-0.775609	0.4486
Y1	0.057936	0.268464	0.215805	0.8317
RESID(-1)	-0.157988	0.265288	-0.595533	0.5593
RESID(-2)	-0.433449	0.281004	-1.542500	0.1414

R-squared	0.123812	Mean dependent var	9.24E-15
Adjusted R-squared	-0.236972	S.D. dependent var	0.606720
S.E. of regression	0.674789	Akaike info criterion	2.305506
Sum squared resid	7.740794	Schwarz criterion	2.695546
Log likelihood	-20.81882	Hannan-Quinn criter.	2.413686
F-statistic	0.343174	Durbin-Watson stat	1.887007
Prob(F-statistic)	0.922436		

Variance Inflation Factors
Date: 12/16/22 Time: 14:28
Sample: 1997 2021
Included observations: 25

Variable	Coefficient Variance	Uncentered VIF	Centered VIF
C	320.3497	12884.98	NA
X1	0.258401	963.9164	5.737774
X2	1.259123	11614.39	4.948841
X3	0.102542	86.90594	9.422389
X4	0.043113	160.2851	1.382244