

DAFTAR PUSTAKA

- Atalla, Tamer M., Mahmoud H. Hanafy, and Maher A. Amer. 2011. "Growth Rates of The Two Reef-Building Species, *Acropora Humilis* and *Millepora Platyphylla* at Hurghada, Red Sea, Egypt." *Egyptian Journal Of Aquatical Biology and Fisheries* 15 (December 2018): 14. <https://doi.org/10.21608/ejabf.2011.2096>.
- Dahuri, Rokhmin. 2003. *Keanekaragaman Hayati Laut: Aset Pembangunan Berkelanjutan Indonesia*. Jakarta: Gramedia Pustaka Utama.
- Dahuri, Rokhmin, Jacob Rais, Sapta Putra Ginting, and MJ Sitepu. 1996. *Pengelolaan Sumberdaya Wilayah Pesisir Dan Lautan Secara Terpadu*. Jakarta: Pradnya Paramita.
- Dawes, Clinton J. 1981. "Marine Botany." *John Wiley Sons*, 1981.
- Dhahiyat, Yayat, Djalinda Sinuhaji, and Herman Hamdani. 2003. "Community Structure of Coral Reef Fish in the Coral Transplantation Area Pulau Pari, Kepulauan Seribu." *Iktiologi Indonesia* 3: 8.
- Effendi, Hefni. 2003. *Telaah Kualitas Air Bagi Pengelolaan Sumberdaya Dan Lingkungan Perairan*. Yogyakarta: PT Kanisius.
- English, S, C Wilkinson, and V Baker. 1997. *Survey Manual For Tropical Marine Resource*. 2nd ed. Townsville: Australian Institute Of Marine Science.
- Giyanto, Muhammad Abrar, Tri Aryono Hadi, Agus Budiyo, Muhammad Hafizt, Abdullah Salatalohy, and Marindah yulia Iswari. 2017. *Status Terumbu Karang Di Indonesia 2017*.
- Goreau, Thomas Fritz, and Nora I Goreau. 1959. "The Physiology of Skeleton Formation in Corals. II. Calcium Deposition by Hermatypic Corals under Various Conditions in the Reef." *Biological Bulletin*, 1959. <https://doi.org/10.2307/1539259>.
- Hermanto, Bambang. 2015. "Pertumbuhan Fragmen *Acropora Formosa* Pada Ukuran Yang Berbeda Dengan Metode Transplantasi Di Perairan Selat Lembeh." *Ilmiah Platax* 3 (2): 90–100.
- Johan, Ofri. 2003. "Training Course: Karakteristik Biologi Karang." *Yayasan Terangi Dan IOI-Indonesia*, 1–8.
- Kaleka, Deselina M. W. 2004. "Transplantasi Karang Batu Marga *Acropora* Pada Substrat Buatan Di Perairan Tablong Kabupaten Kupang," 1–8.
- Lindahl, S Clark, and J Edward. 1998. "Lowtech Restoration of Degraded Coral Reefs Through Transplantation of Staghorn Corals" 27 (8): 645–50.
- Maragos, James Evans. 1974. "Coral Transplantation A Method To Create Preserve and Manage Coral Reefs." University Of Hawaii: National Technical Information Service.
- MENKLHK. 2004. *Baku Mutu Air Laut Menteri Negara Lingkungan Hidup*. Jakarta: MENTERI NEGARA LINGKUNGAN HIDUP.

- Muttaqien, Aisyah Fitri. 2012. "Tingkat Kelangsungan Hidup Dan Pertumbuhan Karang Transplantasi Jenis *Acropora Humilis* (Dana 1846), *Acropora Brueggemanni* (Brook 1893), Dan *Acropora Austera* (Dana 1846) Di Perairan Pulau Kelapa, Kepulauan Seribu, Jakarta." *Skripsi*. Institute Pertanian Bogor.
- Nybakken, James W. 1992. *Biologi Laut: Suatu Pendekatan Ekologis*. Edited by M Eidman, D.G. Bengen, Koesbiono, Hutomo M, and Sukristijono. Jakarta: PT. Gramedia.
- Plucer-Rosario, Gyongyi, and Richard H. Randal. 1987. "Preservation of Rare Coral Species by Transplantation an Examination of Their Recruitment and Growth." *Buletin Of Marine Science* 41 (2): 585–93.
- Rizqika, Choirun Nisa Akbar, Supriharyono, and Nurul Latifah. 2018. "Laju Pertumbuhan Terumbu Karang *Acropora Formosa* DI Pulau Menjangan Kecil, Taman Nasional Karimunjawa." *Journal Of Maquares* 7: 315–22.
- Romimohtarto, K, and S Juwana. 2001. *Biologi Laut: Ilmu Pengetahuan Tentang Biota Laut*. Jakarta: Puslitbang Oseanologi LIPI.
- Sadarun. 1998. "Transplantasi Karang Batu (Stony Coral) Di Kepulauan Seribu Teluk Jakarta." Institut Pertanian Bogor.
- Siregar, Misran Hasadungan. 2009. "Studi Keanekaragaman Plankton Di Hulu Sungai Asahan Porsea." *Skripsi*. Medan: Universitas Sumatera Utara.
- Suharsono. 1996. *Jenis-Jenis Karang Yang Umum Suharsono. (1996). Jenis-Jenis Karang Yang Umum Dijumpai Di Perairan Indonesia*. Jakarta: Puslitbang Oseanologi - LIPI.
- Suharsono. 1998. *Kesadaran Masyarakat Tentang Terumbu Karang (Kerusakan Karang Di Indonesia)*. Jakarta: LIPI.
- Suharsono. 2008. *Jenis-Jenis Karang Indonesia*. Jakarta: Program COREMAP LIPI.
- Suharsono, and W. Kiswara. 1984. "Kematian Alami Karang Di Laut Jawa." *Oseana* IX (1): 31–40.
- Supriharyono. 2007. *Pengelolaan Ekosistem Terumbu Karang*. Jakarta.
- Tanner, Jason E. 1995. "Competition Between Sclerectinian Corals and Macroalgae: An Experimental Investigation of Coral Growth, Survival and Reproduction." *Journal Of Experimental Marine Biology And Ecology* 190: 151–68.
- Timotius, Silvianita. 2003. "Biologi Terumbu Karang." *Yayasan Terumbu Karang Indonesia*. Makalah Training Course: Karakteristik Biologi Karang.
- Tioho, Hanny, Carolus P. Paruntu, and Hendra Patrich. 2013. "Ketahanan Hidup Dan Laju Pertumbuhan Karang Scleractinia Yang Di Transplantasi Pada Rataan Terumbu Perairan Kalasei, Kabupaten Minahasa, Sulawesi Utara." *Aquatic Science & Management* 1 (2): 111–16.
- V.J., Harriott, and David A Fisk. 1988. "Coral Transplantation as A Reef Management Option." *Proceedings of the 6th International Coral Reef Symposium* 2: 375–79.

Veron. 2000. *Coral of The World*. University of Michigan.

Wood, Elizabeth M. 1983. *Reefs of The World. Biology and Field Guide*. Hongkong: T.T.H. Publications.

Yudasmara, Gede Ari. 2015. "Analisis Pertumbuhan Karang *Acrofora Formosa* Dalam Proses Transplantasi Karang." *Seminar Nasional FMIPA UNDIKSHA V*: 388–94.

LAMPIRAN

Lampiran 1. Tinggi Awal (mm), Tinggi Akhir (mm), dan Pertumbuhan Mutlak Tinggi (mm) Karang *Acropora formosa* pada Karang Transplantasi.

No	Tinggi Awal (mm)	Tinggi Akhir (mm)	Pertumbuhan Mutlak (mm)
1	97.35	121.50	24.15
2	107.40	135.60	28.20
3	96.20	120.35	24.15
4	71.55	92.65	21.10
5	89.00	114.40	25.40
Rata-rata	92.30	116.90	24.60
Stdv	13.32	15.63	2.56
Min	71.55	92.65	21.10
Max	107.40	135.60	28.20
No	Tinggi Awal (mm)	Tinggi Akhir (mm)	Pertumbuhan Mutlak (mm)
6	92.60	115.30	22.70
7	81.10	103.50	22.40
8	96.50	122.45	25.95
9	103.00	129.60	26.60
10	88.15	110.75	22.60
Rata-rata	92.27	116.32	24.05
Stdv	8.29	10.13	2.05
Min	81.10	103.50	22.40
Max	103.00	129.60	26.60
No	Tinggi Awal (mm)	Tinggi Akhir (mm)	Pertumbuhan Mutlak (mm)
11	114.35	144.50	30.15
12	83.60	106.55	22.95
13	96.40	121.00	24.60
14	71.20	92.40	21.20
15	74.40	96.00	21.60
Rata-rata	87.99	112.09	24.10
Stdv	17.69	21.25	3.63
Min	71.20	92.40	21.20
Max	114.35	144.50	30.15
No	Tinggi Awal (mm)	Tinggi Akhir (mm)	Pertumbuhan Mutlak (mm)
16	71.45	92.30	20.85
17	81.70	104.45	22.75
18	114.65	142.10	27.45
19	92.30	113.20	20.90
20	82.40	106.20	23.80
Rata-rata	88.50	111.65	23.15
Stdv	16.37	18.61	2.71
Min	71.45	92.30	20.85
Max	114.65	142.10	27.45

Lampiran 2. Diameter Awal (mm), Diameter Akhir (mm), dan Pertumbuhan Mutlak Diameter (mm) Karang *Acropora formosa* pada Karang Transplantasi.

No	Diameter Awal (mm)	Diameter Akhir (mm)	Pertumbuhan Mutlak (mm)
1	9.10	16.20	7.10
2	8.20	14.00	5.80
3	6.85	11.10	4.25
4	5.40	9.50	4.10
5	7.10	15.35	8.25
Rata-rata	7.33	13.23	5.90
Stdv	1.41	2.84	1.80
Min	5.40	9.50	4.10
Max	9.10	16.20	8.25
No	Diameter Awal (mm)	Diameter Akhir (mm)	Pertumbuhan Mutlak (mm)
6	7.30	13.40	6.10
7	6.60	13.10	6.50
8	7.15	14.40	7.25
9	9.50	15.60	6.10
10	7.50	14.65	7.15
Rata-rata	7.61	14.23	6.62
Stdv	1.11	1.01	0.56
Min	6.60	13.10	6.10
Max	9.50	15.60	7.25
No	Diameter Awal (mm)	Diameter Akhir (mm)	Pertumbuhan Mutlak (mm)
11	9.10	16.00	6.90
12	7.15	13.40	6.25
13	7.40	15.20	7.80
14	6.65	12.65	6.00
15	6.40	13.20	6.80
Rata-rata	7.34	14.09	6.75
Stdv	1.06	1.43	0.70
Min	6.40	12.65	6.00
Max	9.10	16.00	7.80
No	Diameter Awal (mm)	Diameter Akhir (mm)	Pertumbuhan Mutlak (mm)
16	6.20	14.00	7.80
17	7.00	12.10	5.10
18	10.50	16.30	5.80
19	8.10	14.15	6.05
20	7.00	12.20	5.20
Rata-rata	7.76	13.75	5.99
Stdv	1.67	1.72	1.09
Min	6.20	12.10	5.10
Max	10.50	16.30	7.80

Lampiran 3. Tinggi Awal (mm), Tinggi Akhir (mm), dan Pertumbuhan Mutlak Tinggi (mm) Karang *Acropora humilis* pada Karang Transplantasi.

No	Tinggi Awal (mm)	Tinggi Akhir (mm)	Pertumbuhan Mutlak (mm)
1	123.10	140.40	17.30
2	110.50	124.40	13.90
3	92.45	107.00	14.55
4	114.50	129.10	14.60
5	107.85	120.45	12.60
Rata-rata	109.68	124.27	14.59
Stdv	11.23	12.21	1.72
Min	92.45	107.00	12.60
Max	123.10	140.40	17.30

No	Tinggi Awal (mm)	Tinggi Akhir (mm)	Pertumbuhan Mutlak (mm)
6	41.20	63.40	22.20
7	45.50	69.40	23.90
8	46.00	72.10	26.10
9	51.35	70.50	19.15
10	48.95	66.30	17.35
Rata-rata	46.60	68.34	21.74
Stdv	3.83	3.48	3.53
Min	41.20	63.40	17.35
Max	51.35	72.10	26.10

No	Tinggi Awal (mm)	Tinggi Akhir (mm)	Pertumbuhan Mutlak (mm)
11	87.50	100.45	12.95
12	111.20	128.40	17.20
13	66.45	82.10	15.65
14	94.10	113.00	18.90
15	80.50	101.80	21.30
Rata-rata	87.95	105.15	17.20
Stdv	16.56	17.08	3.17
Min	66.45	82.10	12.95
Max	111.20	128.40	21.30

No	Tinggi Awal (mm)	Tinggi Akhir (mm)	Pertumbuhan Mutlak (mm)
16	92.00	114.95	22.95
17	46.10	66.25	20.15
18	111.65	124.50	12.85
19	123.15	139.75	16.60
20	83.30	104.80	21.50
Rata-rata	91.24	110.05	18.81
Stdv	29.73	27.66	4.08
Min	46.10	66.25	12.85
Max	123.15	139.75	22.95

Lampiran 4. Diameter Awal (mm), Diameter Akhir (mm), dan Pertumbuhan Mutlak Diameter (mm) Karang *Acropora humilis* pada Karang Transplantasi.

No	Diameter Awal (mm)	Diameter Akhir (mm)	Pertumbuhan Mutlak (mm)
1	7.50	14.70	7.20
2	9.90	13.10	3.20
3	7.20	15.00	7.80
4	9.20	14.20	5.00
5	8.15	14.30	6.15
Rata-rata	8.39	14.26	5.87
Stdv	1.14	0.72	1.83
Min	7.20	13.10	3.20
Max	9.90	15.00	7.80

No	Diameter Awal (mm)	Diameter Akhir (mm)	Pertumbuhan Mutlak (mm)
6	10.30	14.20	3.90
7	9.60	15.45	5.85
8	6.85	14.60	7.75
9	7.00	11.10	4.10
10	9.15	18.10	8.95
Rata-rata	8.58	14.69	6.11
Stdv	1.57	2.52	2.22
Min	6.85	11.10	3.90
Max	10.30	18.10	8.95

No	Diameter Awal (mm)	Diameter Akhir (mm)	Pertumbuhan Mutlak (mm)
11	7.40	12.20	4.80
12	11.00	15.25	4.25
13	6.50	11.40	4.90
14	5.45	11.30	5.85
15	6.65	14.50	7.85
Rata-rata	7.40	12.93	5.53
Stdv	2.13	1.83	1.42
Min	5.45	11.30	4.25
Max	11.00	15.25	7.85

No	Diameter Awal (mm)	Diameter Akhir (mm)	Pertumbuhan Mutlak (mm)
16	7.10	15.00	7.90
17	6.50	14.35	7.85
18	11.20	15.10	3.90
19	7.65	13.50	5.85
20	7.70	14.60	6.90
Rata-rata	8.03	14.51	6.48
Stdv	1.84	0.64	1.67
Min	6.50	13.50	3.90
Max	11.20	15.10	7.90

Lampiran 5. Tinggi Awal (mm), Tinggi Akhir (mm), dan Pertumbuhan Mutlak Tinggi (mm) Karang *Acropora digitifera* pada Karang Transplantasi.

No	Tinggi Awal (mm)	Tinggi Akhir (mm)	Pertumbuhan Mutlak (mm)
1	60.10	74.40	14.30
2	56.30	68.00	11.70
3	60.50	74.15	13.65
4	44.65	55.60	10.95
5	53.10	67.10	14.00
Rata-rata	54.93	67.85	12.92
Stdv	6.49	7.64	1.50
Min	44.65	55.60	10.95
Max	60.50	74.40	14.30
No	Tinggi Awal (mm)	Tinggi Akhir (mm)	Pertumbuhan Mutlak (mm)
6	41.45	48.00	6.55
7	63.20	70.35	7.15
8	49.50	61.85	12.35
9	42.15	53.60	11.45
10	51.65	67.10	15.45
Rata-rata	49.59	60.18	10.59
Stdv	8.82	9.30	3.73
Min	41.45	48.00	6.55
Max	63.20	70.35	15.45
No	Tinggi Awal (mm)	Tinggi Akhir (mm)	Pertumbuhan Mutlak (mm)
11	51.00	67.55	16.55
12	76.45	85.70	9.25
13	49.80	58.00	8.20
14	49.10	58.50	9.40
15	53.10	62.65	9.55
Rata-rata	55.89	66.48	10.59
Stdv	11.59	11.41	3.37
Min	49.10	58.00	8.20
Max	76.45	85.70	16.55
No	Tinggi Awal (mm)	Tinggi Akhir (mm)	Pertumbuhan Mutlak (mm)
16	49.35	57.10	7.75
17	56.00	68.55	12.55
18	66.60	74.70	8.10
19	44.90	54.95	10.05
20	52.20	62.00	9.80
Rata-rata	53.81	63.46	9.65
Stdv	8.22	8.17	1.91
Min	44.90	54.95	7.75
Max	66.60	74.70	12.55

Lampiran 6. Diameter Awal (mm), Diameter Akhir (mm), dan Pertumbuhan Mutlak Diameter (mm) Karang *Acropora digitifera* pada Karang Transplantasi.

No	Diameter Awal (mm)	Diameter Akhir (mm)	Pertumbuhan Mutlak (mm)
1	11.20	22.15	10.95
2	9.10	14.00	4.90
3	7.35	21.10	13.75
4	7.00	18.30	11.30
5	8.20	16.15	7.95
Rata-rata	8.57	18.34	9.77
Stdv	1.68	3.38	3.41
Min	7.00	14.00	4.90
Max	11.20	22.15	13.75

No	Diameter Awal (mm)	Diameter Akhir (mm)	Pertumbuhan Mutlak (mm)
6	8.60	14.40	5.80
7	9.10	15.00	5.90
8	6.85	19.70	12.85
9	7.20	16.20	9.00
10	8.00	18.35	10.35
Rata-rata	7.95	16.73	8.78
Stdv	0.94	2.24	3.01
Min	6.85	14.40	5.80
Max	9.10	19.70	12.85

No	Diameter Awal (mm)	Diameter Akhir (mm)	Pertumbuhan Mutlak (mm)
11	9.45	16.35	6.90
12	5.50	15.40	9.90
13	11.25	20.20	8.95
14	10.60	16.50	5.90
15	9.30	14.55	5.25
Rata-rata	9.22	16.60	7.38
Stdv	2.23	2.16	1.99
Min	5.50	14.55	5.25
Max	11.25	20.20	9.90

No	Diameter Awal (mm)	Diameter Akhir (mm)	Pertumbuhan Mutlak (mm)
16	6.55	17.40	10.85
17	9.60	14.60	5.00
18	5.10	15.00	9.90
19	7.30	14.15	6.85
20	7.35	16.30	8.95
Rata-rata	7.18	15.49	8.31
Stdv	1.63	1.34	2.37
Min	5.10	14.15	5.00
Max	9.60	17.40	10.85

Lampiran 7. Analisis *Oneway Anova* Pertumbuhan Mutlak (Tinggi) Jenis Karang *Acropora formosa*, *Acropora humilis*, dan *Acropora digitifera* pada Karang Transplantasi.

ANOVA

Pertumbuhan Mutlak (Tinggi)

	Sum of Squares	df	Mean Square	F	Sig.
Between Groups	341.007	2	170.504	45.394	.000
Within Groups	33.805	9	3.756		
Total	374.812	11			

Lampiran 8. Analisis *Oneway Anova* Pertumbuhan Mutlak (Diameter) Jenis Karang *Acropora formosa*, *Acropora humilis*, dan *Acropora digitifera* pada Karang Transplantasi.

ANOVA

Pertumbuhan Mutlak (Diameter)

	Sum of Squares	df	Mean Square	F	Sig.
Between Groups	15.610	2	7.805	17.527	.001
Within Groups	4.008	9	.445		
Total	19.617	11			

Lampiran 9. *Post Hoc Test* Pertumbuhan Mutlak (Tinggi) Jenis Karang *Acropora formosa*, *Acropora humilis*, dan *Acropora digitifera* pada Karang Transplantasi

Post Hoc Tests

Multiple Comparisons

Dependent Variable: Pertumbuhan Mutlak (Tinggi)

Bonferroni

(I) Jenis Karang	(J) Jenis Karang	Mean Difference			95% Confidence Interval	
		(I-J)	Std. Error	Sig.	Lower Bound	Upper Bound
Acropora formosa	Acropora humilis	5.89000*	1.37042	.006	1.8701	9.9099
	Acropora digitifera	13.03750*	1.37042	.000	9.0176	17.0574
Acropora humilis	Acropora formosa	-5.89000*	1.37042	.006	-9.9099	-1.8701
	Acropora digitifera	7.14750*	1.37042	.002	3.1276	11.1674
Acropora digitifera	Acropora formosa	-13.03750*	1.37042	.000	-17.0574	-9.0176
	Acropora humilis	-7.14750*	1.37042	.002	-11.1674	-3.1276

*. The mean difference is significant at the 0.05 level.

Lampiran 10. *Post Hoc Test* Pertumbuhan Mutlak (Diameter) Jenis Karang *Acropora formosa*, *Acropora humilis*, dan *Acropora digitifera* pada Karang Transplantasi

Post Hoc Tests

Multiple Comparisons

Dependent Variable: Pertumbuhan Mutlak (Diameter)

Bonferroni

(I) Jenis Karang	(J) Jenis Karang	Mean Difference			95% Confidence Interval	
		(I-J)	Std. Error	Sig.	Lower Bound	Upper Bound
Acropora formosa	Acropora humilis	.31750	.47186	1.000	-1.0666	1.7016
	Acropora digitifera	-2.24500*	.47186	.003	-3.6291	-.8609
Acropora humilis	Acropora formosa	-.31750	.47186	1.000	-1.7016	1.0666
	Acropora digitifera	-2.56250*	.47186	.001	-3.9466	-1.1784
Acropora digitifera	Acropora formosa	2.24500*	.47186	.003	.8609	3.6291
	Acropora humilis	2.56250*	.47186	.001	1.1784	3.9466

*. The mean difference is significant at the 0.05 level.

Lampiran 11. Tinggi Awal (mm), Tinggi Akhir (mm), dan Pertumbuhan Mutlak Tinggi (mm) Karang *Acropora formosa* pada Karang Alami.

No	Tinggi Awal (mm)	Tinggi Akhir (mm)	Pertumbuhan Mutlak (mm)
1	86.20	115.30	29.10
2	91.35	120.50	29.15
3	82.50	110.30	27.80
4	85.50	112.60	27.10
Rata rata	86.3875	114.6750	28.2875
Stdv	3.6770	4.3881	1.0086
Min	82.50	110.30	27.10
Max	91.35	120.50	29.15

Lampiran 12. Diameter Awal (mm), Diameter Akhir (mm), dan Pertumbuhan Mutlak Diameter (mm) Karang *Acropora formosa* pada Karang Alami.

No	Diameter Awal (mm)	Diameter Akhir (mm)	Pertumbuhan Mutlak (mm)
1	14.50	20.60	6.10
2	14.10	22.10	8.00
3	12.65	19.40	6.75
4	15.30	22.85	7.55
Rata rata	14.1375	21.2375	7.1000
Stdv	1.1101	1.5413	0.8436
Min	12.65	19.40	6.10
Max	15.30	22.85	8.00

Lampiran 13. Tinggi Awal (mm), Tinggi Akhir (mm), dan Pertumbuhan Mutlak Tinggi (mm) Karang *Acropora humilis* pada Karang Alami.

No	Tinggi Awal (mm)	Tinggi Akhir (mm)	Pertumbuhan Mutlak (mm)
1	43.60	61.65	18.05
2	51.20	70.30	19.10
3	47.80	68.60	20.80
4	50.25	71.00	20.75
Rata rata	48.2125	67.8875	19.6750
Stdv	3.3922	4.2787	1.3407
Min	43.60	61.65	18.05
Max	51.20	71.00	20.80

Lampiran 14. Diameter Awal (mm), Diameter Akhir (mm), dan Pertumbuhan Mutlak Diameter (mm) Karang *Acropora humilis* pada Karang Alami.

No	Diameter Awal (mm)	Diameter Akhir (mm)	Pertumbuhan Mutlak (mm)
1	16.75	22.60	5.85
2	18.15	25.30	7.15
3	18.60	26.10	7.50
4	19.00	26.10	7.10
Rata rata	18.1250	25.0250	6.9000
Stdv	0.9802	1.6601	0.7223
Min	16.75	22.60	5.85
Max	19.00	26.10	7.50

Lampiran 15. Tinggi Awal (mm), Tinggi Akhir (mm), dan Pertumbuhan Mutlak Tinggi (mm) Karang *Acropora digitifera* pada Karang Alami.

No	Tinggi Awal (mm)	Tinggi Akhir (mm)	Pertumbuhan Mutlak (mm)
1	23.50	35.40	11.90
2	31.00	41.60	10.60
3	33.10	45.75	12.65
4	27.25	39.80	12.55
Rata rata	28.7125	40.6375	11.9250
Stdv	4.2345	4.2894	0.9438
Min	23.50	35.40	10.60
Max	33.10	45.75	12.65

Lampiran 16. Diameter Awal (mm), Diameter Akhir (mm), dan Pertumbuhan Mutlak Diameter (mm) Karang *Acropora digitifera* pada Karang Alami.

No	Diameter Awal (mm)	Diameter Akhir (mm)	Pertumbuhan Mutlak (mm)
1	16.30	26.60	10.30
2	15.10	24.75	9.65
3	17.25	26.80	9.55
4	17.00	27.15	10.15
Rata rata	16.4125	26.3250	9.9125
Stdv	0.9630	1.0743	0.3683
Min	15.10	24.75	9.55
Max	17.25	27.15	10.30

Lampiran 17. Analisis *Oneway Anova* Pertumbuhan Mutlak (Tinggi) Jenis Karang *Acropora formosa*, *Acropora humilis*, dan *Acropora digitifera* pada Karang Alami.

ANOVA

Pertumbuhan Mutlak (Tinggi)

	Sum of Squares	df	Mean Square	F	Sig.
Between Groups	535.959	2	267.979	216.951	.000
Within Groups	11.117	9	1.235		
Total	547.076	11			

Lampiran 18. Analisis *Oneway Anova* Pertumbuhan Mutlak (Diameter) Jenis Karang *Acropora formosa*, *Acropora humilis*, dan *Acropora digitifera* pada Karang Alami.

ANOVA

Pertumbuhan Mutlak (Diameter)

	Sum of Squares	df	Mean Square	F	Sig.
Between Groups	22.700	2	11.350	24.873	.000
Within Groups	4.107	9	.456		
Total	26.807	11			

Lampiran 19. *Oneway anova* Pertumbuhan Mutlak (Tinggi) Jenis Karang *Acropora formosa*, *Acropora humilis*, dan *Acropora digitifera* pada Karang Alami

Post Hoc Tests

Multiple Comparisons

Dependent Variable: Pertumbuhan Mutlak (Tinggi)

Bonferroni

(I) Jenis Karang	(J) Jenis Karang	Mean Difference			95% Confidence Interval	
		(I-J)	Std. Error	Sig.	Lower Bound	Upper Bound
Acropora formosa	Acropora humilis	8.61250*	.78588	.000	6.3073	10.9177
	Acropora digitifera	16.36250*	.78588	.000	14.0573	18.6677
Acropora humilis	Acropora formosa	-8.61250*	.78588	.000	-10.9177	-6.3073
	Acropora digitifera	7.75000*	.78588	.000	5.4448	10.0552
Acropora digitifera	Acropora formosa	-16.36250*	.78588	.000	-18.6677	-14.0573
	Acropora humilis	-7.75000*	.78588	.000	-10.0552	-5.4448

*. The mean difference is significant at the 0.05 level.

Lampiran 20. *Oneway anova* Pertumbuhan Mutlak (Diameter) Jenis Karang *Acropora formosa*, *Acropora humilis*, dan *Acropora digitifera* pada Karang Alami

Post Hoc Tests

Multiple Comparisons

Dependent Variable: Pertumbuhan Mutlak (Diameter)

Bonferroni

(I) Jenis Karang	(J) Jenis Karang	Mean Difference			95% Confidence Interval	
		(I-J)	Std. Error	Sig.	Lower Bound	Upper Bound
Acropora formosa	Acropora humilis	.20000	.47766	1.000	-1.2011	1.6011
	Acropora digitifera	-2.81250*	.47766	.001	-4.2136	-1.4114
Acropora humilis	Acropora formosa	-.20000	.47766	1.000	-1.6011	1.2011
	Acropora digitifera	-3.01250*	.47766	.000	-4.4136	-1.6114
Acropora digitifera	Acropora formosa	2.81250*	.47766	.001	1.4114	4.2136
	Acropora humilis	3.01250*	.47766	.000	1.6114	4.4136

*. The mean difference is significant at the 0.05 level.

Lampiran 21. Independent Samples T-test Perbandingan Pertumbuhan Mutlak Tinggi Karang *Acropora formosa* pada Karang Transplantasi dan Karang Alami

Independent Samples Test

		Levene's Test for Equality of Variances		t-test for Equality of Means					95% Confidence Interval of the Difference	
		F	Sig.	t	df	Sig. (2-tailed)	Mean Difference	Std. Error Difference	Lower	Upper
Pertumbuhan Mutlak (Tinggi)	Equal variances assumed	3.293	.119	-7.338	6	.000	-4.31250	.58768	-5.75049	-2.87451
	Equal variances not assumed			-7.338	4.904	.001	-4.31250	.58768	-5.83212	-2.79288

Lampiran 22. Independent Samples T-test Perbandingan Pertumbuhan Mutlak Diameter Karang *Acropora formosa* pada Karang Transplantasi dan Karang Alami

Independent Samples Test

		Levene's Test for Equality of Variances		t-test for Equality of Means					95% Confidence Interval of the Difference	
		F	Sig.	t	df	Sig. (2-tailed)	Mean Difference	Std. Error Difference	Lower	Upper
Pertumbuhan Mutlak (Diameter)	Equal variances assumed	3.435	.113	-1.656	6	.149	-.78500	.47391	-1.94462	.37462
	Equal variances not assumed			-1.656	4.473	.165	-.78500	.47391	-2.04772	.47772

Lampiran 23. Independent Samples T-test Perbandingan Pertumbuhan Mutlak Tinggi Karang *Acropora humilis* pada Karang Transplantasi dan Karang Alami

Independent Samples Test

		Levene's Test for Equality of Variances		t-test for Equality of Means					95% Confidence Interval of the Difference	
		F	Sig.	t	df	Sig. (2-tailed)	Mean Difference	Std. Error Difference	Lower	Upper
Pertumbuhan Mutlak (Tinggi)	Equal variances assumed	1.728	.237	-.970	6	.370	-1.59000	1.64001	-5.60295	2.42295
	Equal variances not assumed			-.970	4.157	.385	-1.59000	1.64001	-6.07636	2.89636

Lampiran 24. Independent Samples T-test Perbandingan Pertumbuhan Mutlak Diameter Karang *Acropora humilis* pada Karang Transplantasi dan Karang Alami

Independent Samples Test

		Levene's Test for Equality of Variances		t-test for Equality of Means					95% Confidence Interval of the Difference	
		F	Sig.	t	df	Sig. (2- tailed)	Mean Difference	Std. Error Difference	Lower	Upper
Pertumbuhan Mutlak (Diameter)	Equal variances assumed	1.055	.344	-2.186	6	.071	-.90250	.41284	-1.91269	.10769
	Equal variances not assumed			-2.186	4.683	.084	-.90250	.41284	-1.98574	.18074

Lampiran 25. Independent Samples T-test Perbandingan Pertumbuhan Mutlak Tinggi Karang *Acropora digitifera* pada Karang Transplantasi dan Karang Alami

Independent Samples Test

		Levene's Test for Equality of Variances		t-test for Equality of Means					95% Confidence Interval of the Difference	
		F	Sig.	t	df	Sig. (2- tailed)	Mean Difference	Std. Error Difference	Lower	Upper
Pertumbuhan Mutlak (Tinggi)	Equal variances assumed	.437	.533	-1.173	6	.285	-.98750	.84172	-3.04712	1.07212
	Equal variances not assumed			-1.173	5.273	.291	-.98750	.84172	-3.11796	1.14296

Lampiran 26. Independent Samples T-test Perbandingan Pertumbuhan Mutlak Diameter Karang *Acropora digitifera* pada Karang Transplantasi dan Karang Alami

Independent Samples Test

		Levene's Test for Equality of Variances		t-test for Equality of Means					95% Confidence Interval of the Difference	
		F	Sig.	t	df	Sig. (2- tailed)	Mean Difference	Std. Error Difference	Lower	Upper
Pertumbuhan Mutlak (Diameter)	Equal variances assumed	2.071	.200	-2.551	6	.043	-1.35250	.53027	-2.65003	-.05497
	Equal variances not assumed			-2.551	3.808	.066	-1.35250	.53027	-2.85460	.14960

Lampiran 27. Tinggi Awal (mm), Tinggi Akhir (mm), dan Laju Pertumbuhan Tinggi (mm hari⁻¹) Karang *Acropora formosa* pada Karang Transplantasi.

No	Tinggi Awal (mm)	Tinggi Akhir (mm)	Laju pertumbuhan (mm hari-1)
1	97.35	121.50	0.19
2	107.40	135.60	0.22
3	96.20	120.35	0.19
4	71.55	92.65	0.17
5	89.00	114.40	0.20
Rata-rata	92.30	116.90	0.19
Stdv	13.32	15.63	0.02
Min	71.55	92.65	0.17
Max	107.40	135.60	0.22

No	Tinggi Awal (mm)	Tinggi Akhir (mm)	Laju pertumbuhan (mm hari-1)
6	92.60	115.30	0.18
7	81.10	103.50	0.18
8	96.50	122.45	0.20
9	103.00	129.60	0.21
10	88.15	110.75	0.18
Rata-rata	92.27	116.32	0.19
Stdv	8.29	10.13	0.01
Min	81.10	103.50	0.18
Max	103.00	129.60	0.21

No	Tinggi Awal (mm)	Tinggi Akhir (mm)	Laju pertumbuhan (mm hari-1)
11	114.35	144.50	0.24
12	83.60	106.55	0.18
13	96.40	121.00	0.19
14	71.20	92.40	0.17
15	74.40	96.00	0.17
Rata-rata	87.99	112.09	0.19
Stdv	17.69	21.25	0.03
Min	71.20	92.40	0.17
Max	114.35	144.50	0.24

No	Tinggi Awal (mm)	Tinggi Akhir (mm)	Laju pertumbuhan (mm hari-1)
16	71.45	92.30	0.16
17	81.70	104.45	0.18
18	114.65	142.10	0.22
19	92.30	113.20	0.16
20	82.40	106.20	0.19
Rata-rata	88.50	111.65	0.18
Stdv	16.37	18.61	0.02
Min	71.45	92.30	0.16
Max	114.65	142.10	0.22

Lampiran 28. Diameter Awal (mm), Diameter Akhir (mm), dan Laju Pertumbuhan Diameter (mm hari⁻¹) Karang *Acropora formosa* pada Karang Transplantasi.

No	Diameter Awal (mm)	Diameter Akhir (mm)	Laju pertumbuhan (mm hari-1)
1	9.10	16.20	0.06
2	8.20	14.00	0.05
3	6.85	11.10	0.03
4	5.40	9.50	0.03
5	7.10	15.35	0.06
Rata-rata	7.33	13.23	0.05
Stdv	1.41	2.84	0.02
Min	5.40	9.50	0.03
Max	9.10	16.20	0.06
No	Diameter Awal (mm)	Diameter Akhir (mm)	Laju pertumbuhan (mm hari-1)
6	7.30	13.40	0.05
7	6.60	13.10	0.05
8	7.15	14.40	0.06
9	9.50	15.60	0.05
10	7.50	14.65	0.06
Rata-rata	7.61	14.23	0.05
Stdv	1.11	1.01	0.01
Min	6.60	13.10	0.05
Max	9.50	15.60	0.06
No	Diameter Awal (mm)	Diameter Akhir (mm)	Laju pertumbuhan (mm hari-1)
11	9.10	16.00	0.05
12	7.15	13.40	0.05
13	7.40	15.20	0.06
14	6.65	12.65	0.05
15	6.40	13.20	0.05
Rata-rata	7.34	14.09	0.05
Stdv	1.06	1.43	0.00
Min	6.40	12.65	0.05
Max	9.10	16.00	0.06
No	Diameter Awal (mm)	Diameter Akhir (mm)	Laju pertumbuhan (mm hari-1)
16	6.20	14.00	0.06
17	7.00	12.10	0.04
18	10.50	16.30	0.05
19	8.10	14.15	0.05
20	7.00	12.20	0.04
Rata-rata	7.76	13.75	0.05
Stdv	1.67	1.72	0.01
Min	6.20	12.10	0.04
Max	10.50	16.30	0.06

Lampiran 29. Tinggi Awal (mm), Tinggi Akhir (mm), dan Laju Pertumbuhan Tinggi (mm hari⁻¹) Karang *Acropora humilis* pada Karang Transplantasi.

No	Tinggi Awal (mm)	Tinggi Akhir (mm)	Laju pertumbuhan (mm hari-1)
1	123.10	140.40	0.14
2	110.50	124.40	0.11
3	92.45	107.00	0.11
4	114.50	129.10	0.11
5	107.85	120.45	0.10
Rata-rata	109.68	124.27	0.11
Stdv	11.23	12.21	0.02
Min	92.45	107.00	0.10
Max	123.10	140.40	0.14

No	Tinggi Awal (mm)	Tinggi Akhir (mm)	Laju pertumbuhan (mm hari-1)
6	41.20	63.40	0.17
7	45.50	69.40	0.19
8	46.00	72.10	0.21
9	51.35	70.50	0.15
10	48.95	66.30	0.14
Rata-rata	46.60	68.34	0.17
Stdv	3.83	3.48	0.03
Min	41.20	63.40	0.14
Max	51.35	72.10	0.21

No	Tinggi Awal (mm)	Tinggi Akhir (mm)	Laju pertumbuhan (mm hari-1)
11	87.50	100.45	0.10
12	111.20	128.40	0.14
13	66.45	82.10	0.12
14	94.10	113.00	0.15
15	80.50	101.80	0.17
Rata-rata	87.95	105.15	0.14
Stdv	16.56	17.08	0.03
Min	66.45	82.10	0.10
Max	111.20	128.40	0.17

No	Tinggi Awal (mm)	Tinggi Akhir (mm)	Laju pertumbuhan (mm hari-1)
16	92.00	114.95	0.18
17	46.10	66.25	0.16
18	111.65	124.50	0.10
19	123.15	139.75	0.13
20	83.30	104.80	0.17
Rata-rata	91.24	110.05	0.15
Stdv	29.73	27.66	0.03
Min	46.10	66.25	0.10
Max	123.15	139.75	0.18

Lampiran 30. Diameter Awal (mm), Diameter Akhir (mm), dan Laju Pertumbuhan Diameter (mm hari⁻¹) Karang *Acropora humilis* pada Karang Transplantasi.

No	Diameter Awal (mm)	Diameter Akhir (mm)	Laju pertumbuhan (mm hari-1)
1	7.50	14.70	0.06
2	9.90	13.10	0.03
3	7.20	15.00	0.06
4	9.20	14.20	0.04
5	8.15	14.30	0.05
Rata-rata	8.39	14.26	0.05
Stdv	1.14	0.72	0.01
Min	7.20	13.10	0.03
Max	9.90	15.00	0.06
No	Diameter Awal (mm)	Diameter Akhir (mm)	Laju pertumbuhan (mm hari-1)
6	10.30	14.20	0.03
7	9.60	15.45	0.05
8	6.85	14.60	0.06
9	7.00	11.10	0.03
10	9.15	18.10	0.07
Rata-rata	8.58	14.69	0.05
Stdv	1.57	2.52	0.02
Min	6.85	11.10	0.03
Max	10.30	18.10	0.07
No	Diameter Awal (mm)	Diameter Akhir (mm)	Laju pertumbuhan (mm hari-1)
11	7.40	12.20	0.04
12	11.00	15.25	0.03
13	6.50	11.40	0.04
14	5.45	11.30	0.05
15	6.65	14.50	0.06
Rata-rata	7.40	12.93	0.04
Stdv	2.13	1.83	0.01
Min	5.45	11.30	0.03
Max	11.00	15.25	0.06
No	Diameter Awal (mm)	Diameter Akhir (mm)	Laju pertumbuhan (mm hari-1)
16	7.10	15.00	0.06
17	6.50	14.35	0.06
18	11.20	15.10	0.03
19	7.65	13.50	0.05
20	7.70	14.60	0.05
Rata-rata	8.03	14.51	0.05
Stdv	1.84	0.64	0.01
Min	6.50	13.50	0.03
Max	11.20	15.10	0.06

Lampiran 31. Tinggi Awal (mm), Tinggi Akhir (mm), dan Laju Pertumbuhan Tinggi (mm hari⁻¹) Karang *Acropora digitifera* pada Karang Transplantasi.

No	Tinggi Awal (mm)	Tinggi Akhir (mm)	Laju pertumbuhan (mm hari-1)
1	60.10	74.40	0.11
2	56.30	68.00	0.09
3	60.50	74.15	0.11
4	44.65	55.60	0.09
5	53.10	67.10	0.11
Rata-rata	54.93	67.85	0.10
Stdv	6.49	7.64	0.01
Min	44.65	55.60	0.09
Max	60.50	74.40	0.11
No	Tinggi Awal (mm)	Tinggi Akhir (mm)	Laju pertumbuhan (mm hari-1)
6	41.45	48.00	0.05
7	63.20	70.35	0.06
8	49.50	61.85	0.10
9	42.15	53.60	0.09
10	51.65	67.10	0.12
Rata-rata	49.59	60.18	0.08
Stdv	8.82	9.30	0.03
Min	41.45	48.00	0.05
Max	63.20	70.35	0.12
No	Tinggi Awal (mm)	Tinggi Akhir (mm)	Laju pertumbuhan (mm hari-1)
11	51.00	67.55	0.13
12	76.45	85.70	0.07
13	49.80	58.00	0.06
14	49.10	58.50	0.07
15	53.10	62.65	0.08
Rata-rata	55.89	66.48	0.08
Stdv	11.59	11.41	0.03
Min	49.10	58.00	0.06
Max	76.45	85.70	0.13
No	Tinggi Awal (mm)	Tinggi Akhir (mm)	Laju pertumbuhan (mm hari-1)
16	49.35	57.10	0.06
17	56.00	68.55	0.10
18	66.60	74.70	0.06
19	44.90	54.95	0.08
20	52.20	62.00	0.08
Rata-rata	53.81	63.46	0.08
Stdv	8.22	8.17	0.02
Min	44.90	54.95	0.06
Max	66.60	74.70	0.10

Lampiran 32. Diameter Awal (mm), Diameter Akhir (mm), dan Laju Pertumbuhan Diameter (mm hari⁻¹) Karang *Acropora digitifera* pada Karang Transplantasi.

No	Diameter Awal (mm)	Diameter Akhir (mm)	Laju pertumbuhan (mm hari-1)
1	11.20	22.15	0.09
2	9.10	14.00	0.04
3	7.35	21.10	0.11
4	7.00	18.30	0.09
5	8.20	16.15	0.06
Rata-rata	8.57	18.34	0.08
Stdv	1.68	3.38	0.03
Min	7.00	14.00	0.04
Max	11.20	22.15	0.11
No	Diameter Awal (mm)	Diameter Akhir (mm)	Laju pertumbuhan (mm hari-1)
6	8.60	14.40	0.05
7	9.10	15.00	0.05
8	6.85	19.70	0.10
9	7.20	16.20	0.07
10	8.00	18.35	0.08
Rata-rata	7.95	16.73	0.07
Stdv	0.94	2.24	0.02
Min	6.85	14.40	0.05
Max	9.10	19.70	0.10
No	Diameter Awal (mm)	Diameter Akhir (mm)	Laju pertumbuhan (mm hari-1)
11	9.45	16.35	0.05
12	5.50	15.40	0.08
13	11.25	20.20	0.07
14	10.60	16.50	0.05
15	9.30	14.55	0.04
Rata-rata	9.22	16.60	0.06
Stdv	2.23	2.16	0.02
Min	5.50	14.55	0.04
Max	11.25	20.20	0.08
No	Diameter Awal (mm)	Diameter Akhir (mm)	Laju pertumbuhan (mm hari-1)
16	6.55	17.40	0.09
17	9.60	14.60	0.04
18	5.10	15.00	0.08
19	7.30	14.15	0.05
20	7.35	16.30	0.07
Rata-rata	7.18	15.49	0.07
Stdv	1.63	1.34	0.02
Min	5.10	14.15	0.04
Max	9.60	17.40	0.09

Lampiran 33. Analisis *Oneway Anova* Laju Pertumbuhan (Tinggi) Jenis Karang *Acropora formosa*, *Acropora humilis*, dan *Acropora digitifera* pada Karang Transplantasi.

ANOVA

Laju Pertumbuhan (Tinggi)

	Sum of Squares	df	Mean Square	F	Sig.
Between Groups	.021	2	.011	42.233	.000
Within Groups	.002	9	.000		
Total	.023	11			

Lampiran 34. Analisis *Oneway Anova* Laju Pertumbuhan (Diameter) Jenis Karang *Acropora formosa*, *Acropora humilis*, dan *Acropora digitifera* pada Karang Transplantasi.

ANOVA

Laju Pertumbuhan (Diameter)

	Sum of Squares	df	Mean Square	F	Sig.
Between Groups	.001	2	.001	19.909	.000
Within Groups	.000	9	.000		
Total	.001	11			

Lampiran 35. *Post Hoc Tests* Laju Pertumbuhan (Tinggi) Jenis Karang *Acropora formosa*, *Acropora humilis*, dan *Acropora digitifera* pada Karang Transplantasi

Post Hoc Tests

Multiple Comparisons

Dependent Variable: Laju Pertumbuhan (Tinggi)

Bonferroni

(I) Jenis Karang	(J) Jenis Karang	Mean Difference			95% Confidence Interval	
		(I-J)	Std. Error	Sig.	Lower Bound	Upper Bound
Acropora formosa	Acropora humilis	.04500*	.01118	.009	.0122	.0778
	Acropora digitifera	.10250*	.01118	.000	.0697	.1353
Acropora humilis	Acropora formosa	-.04500*	.01118	.009	-.0778	-.0122
	Acropora digitifera	.05750*	.01118	.002	.0247	.0903
Acropora digitifera	Acropora formosa	-.10250*	.01118	.000	-.1353	-.0697
	Acropora humilis	-.05750*	.01118	.002	-.0903	-.0247

*. The mean difference is significant at the 0.05 level.

Lampiran 36. *Post Hoc Tests* Laju Pertumbuhan (Diameter) Jenis Karang *Acropora formosa*, *Acropora humilis*, dan *Acropora digitifera* pada Karang Transplantasi

Post Hoc Tests

Multiple Comparisons

Dependent Variable: Laju Pertumbuhan (Diameter)

Bonferroni

(I) Jenis Karang	(J) Jenis Karang	Mean Difference			95% Confidence Interval	
		(I-J)	Std. Error	Sig.	Lower Bound	Upper Bound
Acropora formosa	Acropora humilis	.00250	.00391	1.000	-.0090	.0140
	Acropora digitifera	-.02000*	.00391	.002	-.0315	-.0085
Acropora humilis	Acropora formosa	-.00250	.00391	1.000	-.0140	.0090
	Acropora digitifera	-.02250*	.00391	.001	-.0340	-.0110
Acropora digitifera	Acropora formosa	.02000*	.00391	.002	.0085	.0315
	Acropora humilis	.02250*	.00391	.001	.0110	.0340

*. The mean difference is significant at the 0.05 level.

Lampiran 37. Tinggi Awal (mm), Tinggi Akhir (mm), dan Laju Pertumbuhan Tinggi (mm hari⁻¹) Karang *Acropora formosa* pada Karang Alami.

No	Tinggi Awal (mm)	Tinggi Akhir (mm)	Laju pertumbuhan (mm hari-1)
1	86.20	115.30	0.23
2	91.35	120.50	0.23
3	82.50	110.30	0.22
4	85.50	112.60	0.21
Rata rata	86.3875	114.6750	0.2225
Stdv	3.6770	4.3881	0.0096
Min	82.50	110.30	0.21
Max	91.35	120.50	0.23

Lampiran 38. Diameter Awal (mm), Diameter Akhir (mm), dan Laju Pertumbuhan Diameter (mm hari⁻¹) Karang *Acropora formosa* pada Karang Alami.

No	Diameter Awal (mm)	Diameter Akhir (mm)	Laju pertumbuhan (mm hari-1)
1	14.50	20.60	0.05
2	14.10	22.10	0.06
3	12.65	19.40	0.05
4	15.30	22.85	0.06
Rata rata	14.1375	21.2375	0.0550
Stdv	1.1101	1.5413	0.0058
Min	12.65	19.40	0.05
Max	15.30	22.85	0.06

Lampiran 39. Tinggi Awal (mm), Tinggi Akhir (mm), dan Laju Pertumbuhan Tinggi (mm hari⁻¹) Karang *Acropora humilis* pada Karang Alami.

No	Tinggi Awal (mm)	Tinggi Akhir (mm)	Laju pertumbuhan (mm hari-1)
1	43.60	61.65	0.14
2	51.20	70.30	0.15
3	47.80	68.60	0.16
4	50.25	71.00	0.16
Rata rata	48.2125	67.8875	0.1525
Stdv	3.3922	4.2787	0.0096
Min	43.60	61.65	0.14
Max	51.20	71.00	0.16

Lampiran 40. Diameter Awal (mm), Diameter Akhir (mm), dan Laju Pertumbuhan Diameter (mm hari⁻¹) Karang *Acropora humilis* pada Karang Alami.

No	Diameter Awal (mm)	Diameter Akhir (mm)	Laju pertumbuhan (mm hari-1)
1	16.75	22.60	0.05
2	18.15	25.30	0.06
3	18.60	26.10	0.06
4	19.00	26.10	0.06
Rata rata	18.1250	25.0250	0.0575
Stdv	0.9802	1.6601	0.0050
Min	16.75	22.60	0.05
Max	19.00	26.10	0.06

Lampiran 41. Tinggi Awal (mm), Tinggi Akhir (mm), dan Laju Pertumbuhan Tinggi (mm hari⁻¹) Karang *Acropora digitifera* pada Karang Alami.

No	Tinggi Awal (mm)	Tinggi Akhir (mm)	Laju pertumbuhan (mm hari-1)
1	23.50	35.40	0.09
2	31.00	41.60	0.08
3	33.10	45.75	0.10
4	27.25	39.80	0.10
Rata rata	28.7125	40.6375	0.0925
Stdv	4.2345	4.2894	0.0096
Min	23.50	35.40	0.08
Max	33.10	45.75	0.10

Lampiran 42. Diameter Awal (mm), Diameter Akhir (mm), dan Laju Pertumbuhan Diameter (mm hari⁻¹) Karang *Acropora digitifera* pada Karang Alami.

No	Diameter Awal (mm)	Diameter Akhir (mm)	Laju pertumbuhan (mm hari-1)
1	16.30	26.60	0.08
2	15.10	24.75	0.08
3	17.25	26.80	0.08
4	17.00	27.15	0.08
Rata rata	16.4125	26.3250	0.0800
Stdv	0.9630	1.0743	0.0000
Min	15.10	24.75	0.08
Max	17.25	27.15	0.08

Lampiran 43. Analisis *Oneway Anova* Laju Pertumbuhan (Tinggi) Jenis Karang *Acropora formosa*, *Acropora humilis*, dan *Acropora digitifera* pada Karang Alami.

ANOVA

Laju Pertumbuhan (Tinggi)

	Sum of Squares	df	Mean Square	F	Sig.
Between Groups	.034	2	.017	184.727	.000
Within Groups	.001	9	.000		
Total	.035	11			

Lampiran 44. Analisis *Oneway Anova* Laju Pertumbuhan (Diameter) Jenis Karang *Acropora formosa*, *Acropora humilis*, dan *Acropora digitifera* pada Karang Alami.

ANOVA

Laju Pertumbuhan (Diameter)

	Sum of Squares	df	Mean Square	F	Sig.
Between Groups	.002	2	.001	39.000	.000
Within Groups	.000	9	.000		
Total	.002	11			

Lampiran 45. *Post Hoc Test* Laju Pertumbuhan (Tinggi) Jenis Karang *Acropora formosa*, *Acropora humilis*, dan *Acropora digitifera* pada Karang Alami

Post Hoc Tests

Multiple Comparisons

Dependent Variable: Laju Pertumbuhan (Tinggi)

Bonferroni

(I) Jenis Karang	(J) Jenis Karang	Mean Difference (I-J)	Std. Error	Sig.	95% Confidence Interval	
					Lower Bound	Upper Bound
Acropora formosa	Acropora humilis	.07000*	.00677	.000	.0501	.0899
	Acropora digitifera	.13000*	.00677	.000	.1101	.1499
Acropora humilis	Acropora formosa	-.07000*	.00677	.000	-.0899	-.0501
	Acropora digitifera	.06000*	.00677	.000	.0401	.0799
Acropora digitifera	Acropora formosa	-.13000*	.00677	.000	-.1499	-.1101
	Acropora humilis	-.06000*	.00677	.000	-.0799	-.0401

*. The mean difference is significant at the 0.05 level.

Lampiran 46. *Post Hoc Test* Laju Pertumbuhan (Diameter) Jenis Karang *Acropora formosa*, *Acropora humilis*, dan *Acropora digitifera* pada Karang Alami

Post Hoc Tests

Multiple Comparisons

Dependent Variable: Laju Pertumbuhan (Diameter)

Bonferroni

(I) Jenis Karang	(J) Jenis Karang	Mean Difference (I-J)	Std. Error	Sig.	95% Confidence Interval	
					Lower Bound	Upper Bound
Acropora formosa	Acropora humilis	-.00250	.00312	1.000	-.0116	.0066
	Acropora digitifera	-.02500*	.00312	.000	-.0341	-.0159
Acropora humilis	Acropora formosa	.00250	.00312	1.000	-.0066	.0116
	Acropora digitifera	-.02250*	.00312	.000	-.0316	-.0134
Acropora digitifera	Acropora formosa	.02500*	.00312	.000	.0159	.0341
	Acropora humilis	.02250*	.00312	.000	.0134	.0316

*. The mean difference is significant at the 0.05 level.

Lampiran 47. Independent Samples T-test Perbandingan Laju Pertumbuhan Tinggi Karang *Acropora formosa* pada Karang Transplantasi dan Karang Alami

Independent Samples Test

		Levene's Test for Equality of Variances		t-test for Equality of Means						
		F	Sig.	t	df	Sig. (2-tailed)	Mean Difference	Std. Error Difference	95% Confidence Interval of the Difference	
									Lower	Upper
Laju Pertumbuhan (Tinggi)	Equal variances assumed	2.455	.168	-6.481	6	.001	-.03500	.00540	-.04821	-.02179
	Equal variances not assumed			-6.481	4.523	.002	-.03500	.00540	-.04933	-.02067

Lampiran 48. Independent Samples T-test Perbandingan Laju Pertumbuhan Diameter Karang *Acropora formosa* pada Karang Transplantasi dan Karang Alami

Independent Samples Test

		Levene's Test for Equality of Variances		t-test for Equality of Means						
		F	Sig.	t	df	Sig. (2-tailed)	Mean Difference	Std. Error Difference	95% Confidence Interval of the Difference	
									Lower	Upper
Laju Pertumbuhan (Diameter)	Equal variances assumed	8.308E+30	.000	-1.732	6	.134	-.00500	.00289	-.01206	.00206
	Equal variances not assumed			-1.732	3.000	.182	-.00500	.00289	-.01419	.00419

Lampiran 49. Independent Samples T-test Perbandingan Laju Pertumbuhan Tinggi Karang *Acropora humilis* pada Karang Transplantasi dan Karang Alami

Independent Samples Test

		Levene's Test for Equality of Variances		t-test for Equality of Means						
		F	Sig.	t	df	Sig. (2-tailed)	Mean Difference	Std. Error Difference	95% Confidence Interval of the Difference	
									Lower	Upper
Laju Pertumbuhan (Tinggi)	Equal variances assumed	1.714	.238	-.747	6	.483	-.01000	.01339	-.04275	.02275
	Equal variances not assumed			-.747	3.861	.498	-.01000	.01339	-.04770	.02770

Lampiran 50. Independent Samples T-test perbandingan laju pertumbuhan diameter karang *Acropora humilis* pada karang transplantasi dan karang alami

Independent Samples Test

		Levene's Test for Equality of Variances		t-test for Equality of Means						
		F	Sig.	t	df	Sig. (2-tailed)	Mean Difference	Std. Error Difference	95% Confidence Interval of the Difference	
									Lower	Upper
Laju Pertumbuhan (Diameter)	Equal variances assumed	.000	1.000	-2.828	6	.030	-.01000	.00354	-.01865	-.00135
	Equal variances not assumed			-2.828	6.000	.030	-.01000	.00354	-.01865	-.00135

Lampiran 51. Independent Samples T-test Perbandingan Laju Pertumbuhan Tinggi Karang *Acropora digitifera* pada Karang Transplantasi dan Karang Alami
Independent Samples Test

		Levene's Test for Equality of Variances		t-test for Equality of Means						
		F	Sig.	t	df	Sig. (2-tailed)	Mean Difference	Std. Error Difference	95% Confidence Interval of the Difference	
									Lower	Upper
Laju Pertumbuhan (Tinggi)	Equal variances assumed	.000	1.000	-1.083	6	.320	-.00750	.00692	-.02444	.00944
	Equal variances not assumed			-1.083	5.989	.320	-.00750	.00692	-.02445	.00945

Lampiran 52. Independent Samples T-test Perbandingan Laju Pertumbuhan Diameter Karang *Acropora digitifera* pada Karang Transplantasi dan Karang Alami
Independent Samples Test

		Levene's Test for Equality of Variances		t-test for Equality of Means						
		F	Sig.	t	df	Sig. (2-tailed)	Mean Difference	Std. Error Difference	95% Confidence Interval of the Difference	
									Lower	Upper
Laju Pertumbuhan (Diameter)	Equal variances assumed	3.000	.134	-2.449	6	.050	-.01000	.00408	-.01999	-.00001
	Equal variances not assumed			-2.449	3.000	.092	-.01000	.00408	-.02299	.00299

Lampiran 53. Tunas Awal, Tunas Akhir, dan Pertambahan Tunas Karang *Acropora formosa* pada Karang Transplantasi.

No	Tunas Awal	Tunas Akhir	Pertambahan Tunas
1	6	13	7
2	4	12	8
3	4	11	7
4	4	13	9
5	5	13	8
Rata-rata	4.60	12.40	7.80
Stdv	0.89	0.89	0.84
Min	4.00	11.00	7.00
Max	6.00	13.00	9.00
No	Tunas Awal	Tunas Akhir	Pertambahan Tunas
6	9	16	7
7	5	14	9
8	4	12	8
9	4	14	10
10	6	13	7
Rata-rata	5.60	13.80	8.20
Stdv	2.07	1.48	1.30
Min	4.00	12.00	7.00
Max	9.00	16.00	10.00
No	Tunas Awal	Tunas Akhir	Pertambahan Tunas
11	4	14	10
12	5	14	9
13	8	14	6
14	4	11	7
15	5	12	7
Rata-rata	5.20	13.00	7.80
Stdv	1.64	1.41	1.64
Min	4.00	11.00	6.00
Max	8.00	14.00	10.00
No	Tunas Awal	Tunas Akhir	Pertambahan Tunas
16	4	12	8
17	5	14	9
18	4	12	8
19	9	15	6
20	5	11	6
Rata-rata	5.40	12.80	7.40
Stdv	2.07	1.64	1.34
Min	4.00	11.00	6.00
Max	9.00	15.00	9.00

Lampiran 54. Tunas Awal, Tunas Akhir, dan Pertambahan Tunas Karang *Acropora humilis* pada Karang Transplantasi.

No	Tunas Awal	Tunas Akhir	Pertambahan Tunas
1	3	20	17
2	3	18	15
3	3	14	11
4	3	16	13
5	4	14	10
Rata-rata	3.20	16.40	13.20
Stdv	0.45	2.61	2.86
Min	3.00	14.00	10.00
Max	4.00	20.00	17.00
No	Tunas Awal	Tunas Akhir	Pertambahan Tunas
6	6	16	10
7	4	16	12
8	4	17	13
9	4	16	12
10	4	17	13
Rata-rata	4.40	16.40	12.00
Stdv	0.89	0.55	1.22
Min	4.00	16.00	10.00
Max	6.00	17.00	13.00
No	Tunas Awal	Tunas Akhir	Pertambahan Tunas
11	4	16	12
12	5	16	11
13	4	16	12
14	5	18	13
15	4	14	10
Rata-rata	4.40	16.00	11.60
Stdv	0.55	1.41	1.14
Min	4.00	14.00	10.00
Max	5.00	18.00	13.00
No	Tunas Awal	Tunas Akhir	Pertambahan Tunas
16	3	17	14
17	4	15	11
18	5	18	13
19	3	14	11
20	4	18	14
Rata-rata	3.80	16.40	12.60
Stdv	0.84	1.82	1.52
Min	3.00	14.00	11.00
Max	5.00	18.00	14.00

Lampiran 55. Tunas Awal, Tunas Akhir, dan Pertambahan Tunas Karang *Acropora digitifera* pada Karang Transplantasi.

No	Tunas Awal	Tunas Akhir	Pertambahan Tunas
1	6	22	16
2	3	19	16
3	4	19	15
4	2	16	14
5	5	16	11
Rata-rata	4.00	18.40	14.40
Stdv	1.58	2.51	2.07
Min	2.00	16.00	11.00
Max	6.00	22.00	16.00
No	Tunas Awal	Tunas Akhir	Pertambahan Tunas
6	5	15	10
7	6	18	12
8	3	18	15
9	4	17	13
10	4	20	16
Rata-rata	4.40	17.60	13.20
Stdv	1.14	1.82	2.39
Min	3.00	15.00	10.00
Max	6.00	20.00	16.00
No	Tunas Awal	Tunas Akhir	Pertambahan Tunas
11	1	20	19
12	3	21	18
13	3	16	13
14	2	18	16
15	4	18	14
Rata-rata	2.60	18.60	16.00
Stdv	1.14	1.95	2.55
Min	1.00	16.00	13.00
Max	4.00	21.00	19.00
No	Tunas Awal	Tunas Akhir	Pertambahan Tunas
16	3	18	15
17	3	19	16
18	4	17	13
19	2	14	12
20	3	20	17
Rata-rata	3.00	17.60	14.60
Stdv	0.71	2.30	2.07
Min	2.00	14.00	12.00
Max	4.00	20.00	17.00

Lampiran 56. Analisis *Oneway Anova* Pertambahan Tunas Jenis Karang *Acropora formosa*, *Acropora humilis*, dan *Acropora digitifera* pada Karang Transplantasi.

ANOVA

Pertambahan Tunas

	Sum of Squares	df	Mean Square	F	Sig.
Between Groups	94.807	2	47.403	74.326	.000
Within Groups	5.740	9	.638		
Total	100.547	11			

Lampiran 57. *Post Hoc Test* pertambahan tunas jenis karang *Acropora formosa*, *Acropora humilis*, dan *Acropora digitifera* pada Karang Transplantasi

Post Hoc Tests

Multiple Comparisons

Dependent Variable: Pertambahan Tunas

Bonferroni

(I) Jenis Karang	(J) Jenis Karang	Mean Difference (I-J)			95% Confidence Interval	
		Mean Difference (I-J)	Std. Error	Sig.	Lower Bound	Upper Bound
Acropora formosa	Acropora humilis	-4.55000*	.56470	.000	-6.2065	-2.8935
	Acropora digitifera	-6.75000*	.56470	.000	-8.4065	-5.0935
Acropora humilis	Acropora formosa	4.55000*	.56470	.000	2.8935	6.2065
	Acropora digitifera	-2.20000*	.56470	.011	-3.8565	-.5435
Acropora digitifera	Acropora formosa	6.75000*	.56470	.000	5.0935	8.4065
	Acropora humilis	2.20000*	.56470	.011	.5435	3.8565

*. The mean difference is significant at the 0.05 level.

Lampiran 58. Tunas Awal, Tunas Akhir, dan Pertambahan Tunas Karang *Acropora formosa* pada Karang Alami.

No	Tunas Awal	Tunas Akhir	Pertambahan Tunas
1	13	20	7
2	15	24	9
3	13	22	9
4	11	19	8
Rata rata	13.0000	21.2500	8.2500
Stdv	1.6330	2.2174	0.9574
Min	11.00	19.00	7.00
Max	15.00	24.00	9.00

Lampiran 59. Tunas Awal, Axial Coralit Akhir, dan Pertambahan Tunas Karang *Acropora humilis* pada Karang Alami.

No	Tunas Awal	Tunas Akhir	Pertambahan Tunas
1	5	16	11
2	4	19	15
3	6	21	15
4	7	23	16
Rata rata	5.5000	19.7500	14.2500
Stdv	1.2910	2.9861	2.2174
Min	4.00	16.00	11.00
Max	7.00	23.00	16.00

Lampiran 60. Tunas Awal, Tunas Akhir, dan Pertambahan Tunas Karang *Acropora digitifera* pada Karang Alami.

No	Tunas Awal	Tunas Akhir	Pertambahan Tunas
1	5	22	17
2	5	19	14
3	7	23	16
4	8	26	18
Rata rata	6.2500	22.5000	16.2500
Stdv	1.5000	2.8868	1.7078
Min	5.00	19.00	14.00
Max	8.00	26.00	18.00

Lampiran 61. Analisis *Oneway Anova* Pertambahan Tunas Jenis Karang *Acropora formosa*, *Acropora humilis*, dan *Acropora digitifera* pada Karang Alami.

ANOVA

Pertambahan Tunas

	Sum of Squares	df	Mean Square	F	Sig.
Between Groups	138.667	2	69.333	23.771	.000
Within Groups	26.250	9	2.917		
Total	164.917	11			

Lampiran 62. *Post Hoc Test* pertambahan tunas jenis karang *Acropora formosa*, *Acropora humilis*, dan *Acropora digitifera* pada Karang Alami

Post Hoc Tests

Multiple Comparisons

Dependent Variable: Pertambahan Tunas

Bonferroni

(I) Jenis Karang	(J) Jenis Karang	Mean Difference (I-J)			95% Confidence Interval	
		Mean Difference (I-J)	Std. Error	Sig.	Lower Bound	Upper Bound
Acropora formosa	Acropora humilis	-6.00000*	1.20761	.002	-9.5423	-2.4577
	Acropora digitifera	-8.00000*	1.20761	.000	-11.5423	-4.4577
Acropora humilis	Acropora formosa	6.00000*	1.20761	.002	2.4577	9.5423
	Acropora digitifera	-2.00000	1.20761	.396	-5.5423	1.5423
Acropora digitifera	Acropora formosa	8.00000*	1.20761	.000	4.4577	11.5423
	Acropora humilis	2.00000	1.20761	.396	-1.5423	5.5423

*. The mean difference is significant at the 0.05 level.

Lampiran 63. *Independent Samples T-test* Perbandingan Pertambahan Tunas Karang *Acropora formosa* pada Karang Transplantasi dan Karang Alami

Independent Samples Test

		Levene's Test for Equality of Variances		t-test for Equality of Means						
		F	Sig.	t	df	Sig. (2-tailed)	Mean Difference	Std. Error Difference	95% Confidence Interval of the Difference	
									Lower	Upper
Pertambahan Tunas	Equal variances assumed	5.500	.057	-890	6	.408	-.45000	.50580	-1.68765	.78765
	Equal variances not assumed			-890	3.689	.428	-.45000	.50580	-1.90230	1.00230

Lampiran 64. *Independent Samples T-test* Perbandingan Pertambahan Tunas Karang *Acropora humilis* pada Karang Transplantasi dan Karang Alami

Independent Samples Test

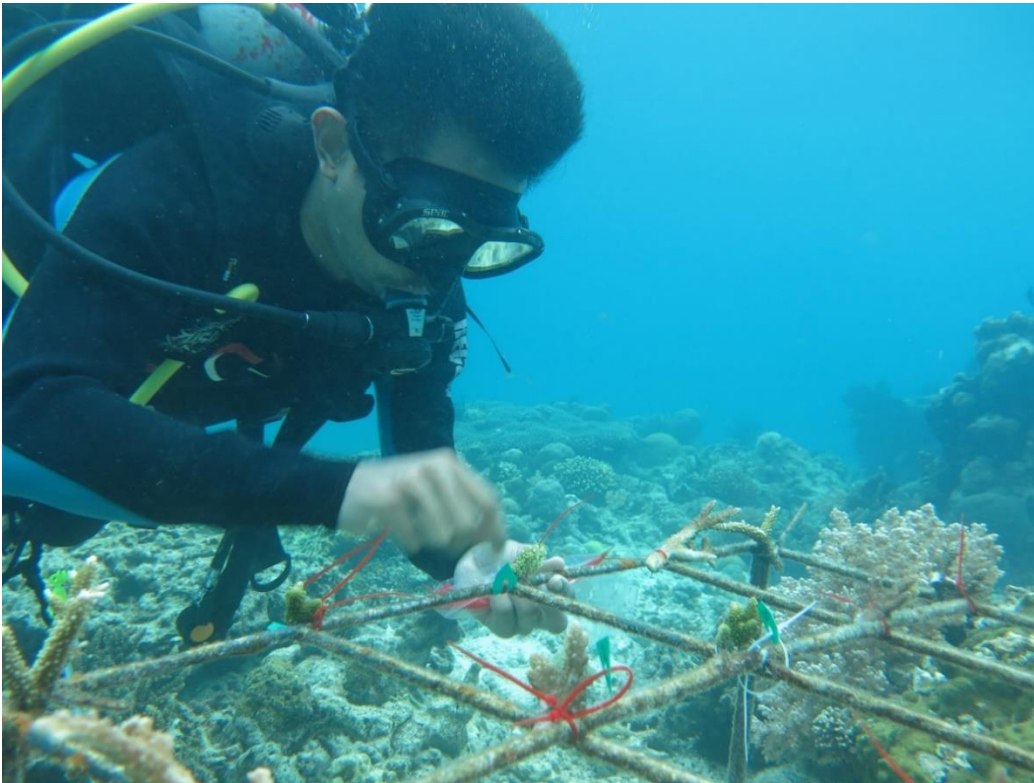
		Levene's Test for Equality of Variances		t-test for Equality of Means						
		F	Sig.	t	df	Sig. (2-tailed)	Mean Difference	Std. Error Difference	95% Confidence Interval of the Difference	
									Lower	Upper
Pertambahan Tunas	Equal variances assumed	3.118	.128	-1.634	6	.153	-1.90000	1.16261	-4.74481	.94481
	Equal variances not assumed			-1.634	3.592	.186	-1.90000	1.16261	-5.27776	1.47776

Lampiran 65. Independent Samples T-test Perbandingan Pertambahan Tunas Karang *Acropora digitifera* pada Karang Transplantasi dan Karang Alami

Independent Samples Test

		Levene's Test for Equality of Variances		t-test for Equality of Means						
		F	Sig.	t	df	Sig. (2- tailed)	Mean Difference	Std. Error Difference	95% Confidence Interval of the Difference	
									Lower	Upper
Pertambahan Tunas	Equal variances assumed	.214	.660	-1.635	6	.153	-1.75000	1.07044	-4.36926	.86926
	Equal variances not assumed			-1.635	5.585	.157	-1.75000	1.07044	-4.41722	.91722

Lampiran 66. Dokumentasi Kegiatan Selama Penelitian



Gambar 1. Pemasangan taggin/tanda pada karang transplantasi.



Gambar 2. Fragmen karang yang telah diberi *tagging*/tanda.



Gambar 3. Pengukuran Salinitas Perairan dengan Refraktometer.



Gambar 4. Pengukuran Kecepatan Arus Perairan dengan Layangan Arus.



Gambar 5. Pengukuran Fragmen Karang Transplantasi.



Gambar 6. Mencatat Hasil Pengukuran Fragmen Karang Transplantasi.



Gambar 7. Mencatat Hasil Pengukuran Fragmen Karang Transplantasi.



Gambar 8. Pengukuran Fragmen Karang Transplantasi.



Gambar 9. Pengukuran Fragmen Karang Transplantasi.



Gambar 10. Pengukuran Fragmen Karang Transplantasi.



Gambar 11. Pengukuran Pertumbuhan Karang Alami.



Gambar 12. Pengukuran Pertumbuhan Karang Alami.



Gambar 13. Pengukuran Pertumbuhan Karang Alami.



Gambar 14. Fragmen Karang Transplantasi.



Gambar 15. Fragmen Karang Transplantasi.



Gambar 16. Fragmen Karang Transplantasi.



Gambar 17. Koloni Karang Alami.



Gambar 18. Koloni Karang Alami.



Gambar 19. Koloni Karang Alami.



Gambar 20. Pengukuran Pertumbuhan Karang Alami.