

## DAFTAR PUSTAKA

- Adriany, D. T., Bakri, A. A., & Bungalim, M. I. 2020. Comparison of DNA Isolation Method on DNA Purity for Detection of White Spot Syndrome Virus (WSSV) on Bamboo Lobster (*Panulirus versicolor*), hal. 242. Dalam prosiding Simposium Nasional VII Kelautan dan Perikanan, Makassar, 293-246 Juni 2020. Universitas Hasanuddin, Makassar.
- Alshehri, M. A., Aziz, A. T., Alzahrani, O., Alasmari, A., Ibrahim, S., Osman, G., & Bahattab, O. 2019. DNA-barcoding and Species Identification for some Saudi Arabia Seaweeds using rbcL Gene. *Journal of Pure and Applied Microbiology* vol. 3, no. 4: 2035–2044.
- Alshehri, M. A., Aziz, A. T., Alzahrani, O., Osman, G., & Alasmari, A. 2021. Molecular characterization of some algae by protein banding pattern and ISSR markers collected from the Gulf of Aqaba, Saudi Arabia. *Pakistan Journal of Botany* vol. 53, no. 2: 707–713.
- Anggraeni, S. R., Sudarsono, & Soedharma, D. 2006. Karakterisasi Genetika Rumput Laut *Eucheuma* spp. dari Tiga Daerah Di Indonesia (Kepulauan Seribu, Keruak, Dan Sumenep). *Bionatura* vol. 10: 196–208.
- Arbit, N.I., Omar, S. B. A., Yasir, I., Tresnati, J., Mutmainnah, & Tuwo, A. 2019. Morphological and genetic analysis of *Gracilaria* sp. Cultured in Ponds and Coastal Waters. IOP Conference Series: Earth and Environmental Science.
- Arumingtyas, E. L. 2011. Isolasi DNA dan RAPD. Universitas Brawijaya: Malang.
- Ayuningrum, P. I., Afrianto, E., & Mulyani, Y. 2012. Keragaman Genetik Rumput Laut *Eucheuma* spp. dari Sukabumi, Jawa Barat Berdasarkan Metode RAPD PCR. *Jurnal Perikanan Dan Kelautan Unpad* vol. 3, no. 4: 337–345.
- Basith, A. 2015. Peluang Gen rbcL sebagai DNA Barcode Berbasis DNA Kloroplas untuk Mengungkap Keanekaragaman Genetik Padi Beras Hitam (*Oryza sativa* L.) Lokal Indonesia. *Seminar Nasional XII Pendidikan Biologi FKIP UNS* : 938–941.
- Belton, G. S., van Reine, W. F. P., Homme, Huisman, J. M., Draisma, S. G. A., & Gurgel, C. F. D. 2014. Resolving Phenotypic Plasticity and Species Designation in the Morphologically Challenging *Caulerpa racemosa-peltata* Complex (Chlorophyta, Caulerpaceae). *Journal of Phycology* vol. 50, no. 1: 32–54.
- Cherif, W., Ktari, L., Bour, M. E., Boudabous, A., & Dubois, M. G. 2016. *Codium fragile* subsp. *fragile* (Suringar) Hariot in Tunisia: Morphological Data and Status of Knowledge. *Journal Algae* vol. 31, no. 2:129-136.
- Da, C.R.R., Chaves, H.V., do Val, D.R., de Freitas, A.R., Lemos, J.C., Rodrigues, J.A., Pereira, K.M., de Araujo, I.W., Bezerra, M.M., & Benevides, N.M., 2014. A Lectin from the Green Seaweed *Caulerpa cupressoides* Reduces Mechanical Hypernociception and Inflammation in the Rat Temporomandibular Joint During Zymosan-induced Arthritis. *International Journal Immunopharmacol* vol. X, no. x:34–43.
- Djakatara, P. D., Gerung, G. S., Ginting, E. L., Sondak, C. F. A., Rumampuk, N. D. C., & Mantiri, D. M. H. (2018). Amplifikasi Dna Alga Merah (Rhodophyta) *Eucheuma* sp. *Jurnal Pesisir Dan Laut Tropis* vol. 6, no. (2): 26.

- Estrada, J., Bautista, N., & Dionisio-sese, M. I. 2020. Morphological Variation of Two Common Sea Grapes (*Caulerpa lentillifera* and *Caulerpa racemosa*) from Selected Region in The Philippines. *Journal Biodiversitas* vol. 21, no. 5: 1823-1832.
- Famà, P., Wysor, B., Kooistra, W. H. C. F., & Zuccarello, G. C. 2002. Molecular phylogeny of the Genus *Caulerpa* (Caulerpales, Chlorophyta) Inferred from Chloroplast tufA Gene. *Journal of Phycology* vol. 38, no. 5: 1040–1050.
- Fatchiyah, Widyarti, & Sri. 2011. Biologi Molekuler. Prinsip Dasar Analisis. Jakarta: Erlangga.
- Gengiah, K., Moses, G. L. P., & Baskar G. 2020. Bioethanol Production from *Codium tomentosum* Residue. *Journal Energy Source*.
- Guiry, M. D., Guiry, G. M., Morrison, L., Rindi, F., Miranda, S. V., Mathieson, A. C., Parker, B. C., Langangen, A., John, D. M., Bárbara, I., *et al.* 2014. AlgaeBase: An on-line Resource for Algae. *Cryptogamie, Algologie* vol. 35, no. 2: 105–115.
- <https://marinespecies.org>
- Hairuddin, R. 2013. Analisis DNA pada Tanaman Gandum (*Triticumaestivum l.*) *Jurnal Dianamika* vol 04, no. 2: 41-46.
- Handoyo, D., & Rudiretna, A. 2001. Prinsip Umum dan Pelaksanaan Polymerase Chain Reaction (PCR). *Unitas* vol. 9, no. (1): 17–29.
- Hengkengbala, I. R., Gerung. G. S., & Wullur, S. 2018. Bisphosphate Carboxylase / Oxygenase Large Subunit) Gene of Red Seaweed *Gracilaria* sp. from Bahoi Waters, North Minahasa Regency. vol. 6, no. 2: 33–38.
- Hikmatyar, M. F., Royani, J. I., & Dasumiati. 2015. Isolasi dan Amplifikasi DNA Keladi Tikus (*Typonium flagelliform*) untuk Identifikasi Keragaman Genetik. *Jurnal Bioteknologi & Biosains Indonesia* vol 2, no. 2:42-48.
- Hutami, R., Bisyri, H., Sukarno, Nuraine H., & Ranasasmita, R. 2018. DNA Extraction from Raw Meat for Analysis with the Loop-Mediated Isothermal Amplification (LAMP) Method. *Journal Agroindustri Halal* vol 4, no. 2: 209-216.
- Julisaniah, N. I., Sulistyowati, L., & Sugiharto, A. N. 2008. Cucumber (*Cucumis sativus L.*) Relationship Analysis Using RAPD-PCR and Isozyme Methods. *Biodiversitas Journal of Biological Diversity* vol. 9, no. 2: 99–102.
- Jumsurizal, J., Ilhamdy, A. F., Anggi, A., & Astika, A. 2021. Karakteristik Kimia Rumput Laut Hijau (*Caulerpa racemosa* & *Caulerpa taxifolia*) dari Laut Natuna, Kepulauan Riau, Indonesia. *Akuatika Indonesia* vol. 6, no. 1: 19–24.
- Kam Ph. 2001. *Codium fragile* the Race Rocks taxonomy. <http://www.racerocks.com/racerock/eco/taxalab/philipk.htm>
- Kazi, M. A., Reddy, C. R. K., & Jha, B. 2013. Molecular Phylogeny and Barcoding of *Caulerpa* (bryopsidales) Based on the tufA, rbcL, 18S rDNA and ITS rDNA Genes. *PLoS ONE* vol. 8, no. 12: 1-13.
- Kim, S. Y., Manghisi, A., Morabito, M., Yang, E. C., Yoon, H. S., Miller, K. A., & Boo, S. M. 2014. Genetic Diversity and Haplotype Distribution of *Pachymeniopsis Gargiuli* sp. nov. and *P. lanceolata* (Halymeniales, Rhodophyta) in Korea, with notes on their

- non-native distributions. *Journal of Phycology* vol. 50, no. 5: 885–896.
- Kirkendale, L., Saunders, G. W., & Winberg, P. (2013). A Molecular Survey of Ulva (Chlorophyta) in Temperate Australia Reveals Enhanced Levels of Cosmopolitanism. *Journal of Phycology* vol. 49, no. 1: 69–81.
- Maeda, T., Kawai, T., nakaoka, M., Yotsukura, N. 2012. Effective DNA Extraction Method for Fragment Analysis using Capillary Sequencer of The Kelp, *Saccharina*. *Journal Appl Phycol* vol 25, no. 1:337-347.
- Meinita, M. D. N., Akromah, N., Andriyani, N., Setijanto, Harwanto, D., & Liu, T. 2021. Molecular identification of *Gracilaria* species (Gracilariales, rhodophyta) obtained from the South Coast of Java Island, Indonesia. *Biodiversitas* vol. 22, no. 7: 3046–3056.
- Minarsih, H., Lingga Np, D., Darmono, T. D., & Herliyana, E. N. 2016. Analisis keragaman genetik *Ganoderma* spp. yang berasosiasi dengan tanaman kakao dan tanaman pelindungnya menggunakan Random Amplified Polymorphic DNA (RAPD). *E-Journal Menara Perkebunan* vol. 79, no. 1: 6-14.
- Mulyani, Y., Purwanto, A., & Nurhwati, I. 2011. Perbandingan Beberapa Metode Isolasi DNA untuk Deteksi Dini KOI HERPES VIRUS (KHV) pada Ikan Mas (*Cyprinus carpio* L). *Jurnal Akuatika*, vol. 2, no. 1: 1-16.
- Nasmia, Natsir, S., Rusaini, Tahya, A. M., Nilawati, J., & Ismail, S. T. 2022. Utilization of *Caulerpa* sp. as a Feed Ingredient for Growth and Survival of Whiteleg Shrimp and *Chanos chanos* in Polyculture. *Journal of Aquatic Research* vol 48: 175-180.
- Navya, P. & Kohra, S. S. 2016. Oyster Thief (*Codium fragile*): A vital Marine Alga. *International Journal of PharmTech Research* vol. 9, no. 5: 315-328.
- Nur, F. 2021. Bioremediasi, Pertumbuhan dan Kualitas Rumput Laut *Codium* sp. pada Limbah Cair Tambak Udang Super Intensif. Tesis. Fakultas Ilmu Kelautan dan Perikanan, Universitas Hasanuddin, Makassar.
- Nur'aini, S., Mukaromah, A. S., & Muhliso, S. 2019. Pengenalan Deoxyribonucleic Acid (DNA) Dengan Marker-Based Augmented Reality. *Walisongo Journal of Information Technology* vol. 1, no. 2: 91.
- Nurhaemi-Haris *et al.* 2003. Kemiripan Genetik Kon Karet (*Hevea brasiliensis* Muell Arg.) Berdasarkan Metode Amplified Fragment Length Polymorphisms (AFLP). *Menara Perkebunan*, vol. 7, no. 1: 1-15.
- Nurhayati, B. & Darmawati, S. 2017. Bahan Ajar Biologi Sel dan Molekuler. Kementerian Kesehatan Republik Indonesia.
- Olivia, R. D. 2012. Keragaman Genetik Populasi Sengon (*Paraserianthes falcataria* (L) Nielsen pada Hutan Rakyat di Jawa Berdasarkan Penanda RAPD. Institut Pertanian Bogor.
- Pharmawati. 2014. Optimalisasi Ekstraksi Dna Dan Pcr-Rapd Pada *Grevillea* Spp. (Proteaceae). *Jurnal Biologi* vol. 13, no. 1: 12-16.
- Prasanthi, N., Prasannakumar, C., Annadurai, D., Mahendran, S., & Alshehri, A. H. M. 2020. Identifying seaweeds species of Chlorophyta, Phaeophyta and Rhodophyta using DNA barcodes. *BioRxiv* : 1-27.

- Prud'homme Van Reine, W. F dan Trono, G. C, 2001. Plant Resource of South-East Asia. Backbuys Pub, Leiden.
- Pulukadang, I., Keppel, R. C., & Gerung, G. S. 2013. A study on bioecology of macroalgae, genus *Caulerpa* in northern Minahasa Waters, North Sulawesi Province. *Aquatic Science & Management* vol. 1, no. 1: 26.
- Reiko, M., Tomoaki, I., Hideshi, I., Tatsuji Sakamoto, T., 2012. Immunostimulatory activity of polysaccharides isolated from *Caulerpa lentillifera* on macrophage cells. *Journal Biosci-Biotechnol Biochem* vol. 76, no.3: 501–505.
- Ritonga, S. W., Fajri, N. F., Ridwan, A. Y., & Putri, A. M. 2014. DNA Barcodes for Marine Biodiversity: Determinasi dan Identifikasi Alga Merah (Rhodophyta) di Pantai Cipatujuh, Tasikmalaya Melalui Identifikasi Molekuler DNA Barcoding. Institut Pertanian Bogor: Bogor.
- Robba, L., Russell, S. J., Barker, G. L., & Brodie, J. 2006. Assessing the use of the mitochondrial cox1 marker for use in DNA barcoding of red algae (Rhodophyta). *American Journal of Botany* vol. 93, no. 8: 1101–1108.
- Romadhon & Putri, F. 2017. Isolasi Pektin dari Kulit Pisang Kepok (*Musa balbbisiana* ABB) dengan Metode Refluks Menggunakan Pelarut HCL Encer. *Journal EECIS* vol. 11, no. 2: 17-26.
- Romlah, S., Naully, P. G., & Nuraisyah, S. 2018. Perbandingan Efektivitas Metode Isolasi DNA (Boiling Water dan CTAB) pada Bakteri *Klebsiella pneumoniae*. *Pertemuan Ilmiah Nasional Penelitian & Pengabdian Masyarakat (PINLITAMAS 1)* vol. 1, no. 1: 627–634.
- Saberivand, A., Sarvarzadeh, F., Peighambarzadeh, S. Z., Saberivand M., Pakizehvand, H., Rashidi, S., Rahbar, M., & Khoshiniyat, M. 2022. The Effect of *Caulerpa sertularioides* Extract Bull Sperm Freezability and Subsequent Embryo Development. *Journal Theriogenology* vol. 189: 167-176.
- Sahu, S. K., Thangaraj, m., Kathiresan, K. 2012. DNA Extraction Protocol for Plant with High Levels of Secondary Metabolites and Polysaccharides without using Liquid Nitrogen and Phenol. *ISRN Mol Biol*: 1-6.
- Saptasari, 2010. Jenis *Caulerpa* Di Pantai Kondang Merak Kabupaten Malang vol. 1, no. 2: 19–22.
- Saunders, 2010. An Evaluation of rbcL, tufA, LSU, and ITS as DNA Barcode Markers for The Marine Green Macroalgae. *Journal Cryptogamie, Algology*, vol. 31, no. 4: 487-528.
- Sherwood, A. R., Kurihara, A., & Conklin, K. Y. 2011. Molecular diversity of Amansieae (Ceramiales, Rhodophyta) from the Hawaiian Islands: A multi-marker assessment reveals high diversity within *Amansia glomerata*. *Phycological Research* vol. 59, no. 1: 16–23.
- Sinaga, A., Putri, L. A. P., & Bangun, M. K. 2017. Analisis Pola Pita Andaliman (*Zanthoxylum acanthopodium* D. C) Berdasarkan primer OPD-03, OPD-20, OPC-07, OPM-20, OPN-09. *Jurnal Agroekoteknologi*, vol. 5, no. 1: 55-64.
- Tapotubun, A. M. 2018. Komposisi Kimia Rumpun Laut *Caulerpa lentillifera* dari Perairan Kei Maluku dengan Metode Penyaringan Berbeda. *Jurnal Pengolahan Hasil*

- Tenriolu, A., Erma, S., Andi, P., & Rosmiati . 2016. Dna Extraction Of Seaweed, *Kappaphycus alvarezii* By Phenol Chloroform Method. *Journal Marina Chimica Acta* vol. 2, no. 2: 6-10.
- Vanderlei, E.S.O., Patoilo, K.K.N.R., Lima, N.A., Lima, A.P.S., Rodrigues, J.A.G., Silva, L.M.C.M., Lima, M.E.P., Lima, V., Benevides, N.M.B., 2010. Antinociceptive and antiinflammatory activities of lectin from the marine green alga *Caulerpa cupressoides*. *Int. Immunopharmacol Journal* vol. 10, no. 1: 1113–1118.
- Varela-Alvarez, E., Andreakis, N., Lago-Leston, A., Pearson, G. A., Serrao, E. E., Procaccini, G., Duarte, C. M., & Marba, N. 2006. Genomic DNA Isolation from Green and Brown Algae (Caulerpales and Fucales) for Microsatellite Library Contruction. *Journal Phycol* vol 42: 741-745.
- Varela-Alvarez, E., Gkenn, T. C., Serrao, E. A., Duarte, C. M., Martinez-Daranas, B., Valero, M., & Marba, N. 2011. Dinucleotide Microsatellite Marker in the Genus *Caulerpa*. *Journal Appl Phycol* vol 23:715-719.
- Windarsih, G. U. T., Utami, D. W., & Yuriyah, S. 2019. Genetic diversity and productivity of *Gracilaria coronopifolia* as alternative for food resource based on rapd marker. *Biodiversitas* vol. 20, no. 12: 3758–3765.
- Yang, E. C., Kim, M. S., Geraldino, P. J. L., Sahoo, D., Shin, J. A., & Boo, S. M. 2008. Mitochondrial *cox1* and plastid *rbcL* genes of *Gracilaria vermiculophylla* (Gracilariaceae, Rhodophyta). *Journal of Applied Phycology* vol. 20, no. 2: 161–168.
- Yaqin, K., Burhanuddin, I., & Samad, W. 2011. Biodiversity of Seaweed Their Metal Contents from Littoral Zone of South Sulawesi Watres. Seminar Internasional Kelautan 2011 Universitas Udayana Bali.
- Yustinadewi, P. D., Yustiantara, P. S., & Narayani, I. 2018. Mdr-1 Gene 1199 Variant Primer Design Techniques in Pediatric Patient Buffy Coat Samples With Lla. *Metamorfosa: Journal of Biological Sciences* vol. 5, no. 1: 105.
- Zainuddin. 2011. Studi Keanekaragaman Makroalga di Pantai Jumiang kabupaten Pamekasan. Universitas Islam Negeri Maulana Malik Ibrahim. Malang.
- Zbakh, H., Salhi, G., Bochkov, V., Carles, Ciudad, J., Noe, V., Hassoun, M., & Riadi, H. 2020. Insights on the Anti-inflammatory and Antitumor Activities of Extract from the Marine Green Alga *Codium decoricatum*. *Journal Pre-proof*.
- Zheng, F., Wang, B., Shen, Z., Wang, Z., Wang, W., Liu, H., Wang, C., & Xin, M. 2020. The Chloroplast Genome Sequence of the Green Macroalgae *Caulerpa okamurae* (Ulvophyceae, Chlorophyta): its Structural Features, Organization and Phylogenetic Analysis. *Journal Marine Genomics*. Article in press.
- Zubaidah. 2011. Integrasi Pendekatan Morfologi Dan Molekuler Dna (Deoxyribonucleic Acid) Dalam Taksonomi: 1–86.
- Zuccarello, G. C., Critchley, A. T., Smith J., Sieber V., Lhonneur, G. B., & West, J. A. 2008. Systematic and Genetic variation in Commercial *Kappaphycus* and *Euचेuma* (solieriaceae, Rhodophyta). *Journal of Applied Phycology* vol.18, no. 2:643-651.

## LAMPIRAN

Lampiran 1. Data *biner* hasil skoring sampel *Caulerpa lentillifera*, *Caulerpa racemosa*, dan *Codium* sp. menggunakan tiga primer.

### OPA-02

	Cr <sub>1</sub>	Cr <sub>2</sub>	Cl <sub>1</sub>	Cl <sub>2</sub>	C	Cr <sub>1</sub>	Cr <sub>2</sub>	Cl <sub>1</sub>	Cl <sub>2</sub>	C	Cr <sub>1</sub>	Cr <sub>2</sub>
2110	0	0	0	0	0	0	0	1	0	0	0	0
1850	0	0	0	0	0	0	0	1	0	0	0	0
1800	0	0	0	0	0	0	0	1	0	0	0	0
1650	0	0	0	0	0	0	0	1	0	0	0	0
1620	0	0	0	0	0	0	0	1	0	0	0	0
1445	0	0	0	0	0	0	0	1	0	0	0	0
1125	0	0	0	0	0	0	0	1	0	0	0	0
1120	0	0	0	0	0	0	0	1	0	0	0	0
775	0	0	0	0	0	0	0	1	0	0	0	0
685	0	0	0	0	0	0	0	1	0	0	0	0
600	0	0	0	0	0	0	0	1	0	0	0	0
599	0	0	0	0	0	0	0	1	0	0	0	0
595	0	0	0	0	0	0	0	1	0	0	0	0
530	0	0	0	0	0	0	0	1	0	0	0	0
495	0	0	0	0	0	0	0	1	0	0	0	0
420	0	0	0	0	0	0	0	1	0	0	0	0
395	0	0	0	0	0	0	0	1	0	0	0	0
310	0	0	0	0	0	0	0	1	0	0	0	0
285	0	0	0	0	0	0	0	1	0	0	0	0
255	0	0	0	0	0	0	0	1	0	0	0	0

### OPD-03

	Cr <sub>1</sub>	Cr <sub>2</sub>	Cl <sub>1</sub>	Cl <sub>2</sub>	C	Cr <sub>1</sub>	Cr <sub>2</sub>	Cl <sub>1</sub>	Cl <sub>2</sub>	C	Cr <sub>1</sub>	Cr <sub>2</sub>
2110	0	0	0	0	0	0	0	1	0	0	0	0
1850	0	0	0	0	0	0	0	1	0	0	0	0
1800	0	0	0	0	0	0	0	1	0	0	0	0
1650	0	0	0	0	0	0	0	1	0	0	0	0
1620	0	0	0	0	0	0	0	1	0	0	0	0
1445	0	0	0	0	0	0	0	1	0	0	0	0
1125	0	0	0	0	0	0	0	1	0	0	0	0
1120	0	0	0	0	0	0	0	1	0	0	0	0
775	0	0	0	0	0	0	0	1	0	0	0	0
685	0	0	0	0	0	0	0	1	0	0	0	0
600	0	0	0	0	0	0	0	1	0	0	0	0
599	0	0	0	0	0	0	0	1	0	0	0	0
595	0	0	0	0	0	0	0	1	0	0	0	0
530	0	0	0	0	0	0	0	1	0	0	0	0
495	0	0	0	0	0	0	0	1	0	0	0	0
420	0	0	0	0	0	0	0	1	0	0	0	0
395	0	0	0	0	0	0	0	1	0	0	0	0
310	0	0	0	0	0	0	0	1	0	0	0	0
285	0	0	0	0	0	0	0	1	0	0	0	0
255	0	0	0	0	0	0	0	1	0	0	0	0

OPC-11

	Cr <sub>1</sub>	Cr <sub>2</sub>	Cl <sub>1</sub>	Cl <sub>2</sub>	C	Cr <sub>1</sub>	Cr <sub>2</sub>	Cl <sub>1</sub>	Cl <sub>2</sub>	C	Cr <sub>1</sub>	Cr <sub>2</sub>
2110	0	0	0	0	0	0	0	1	0	0	0	0
1850	0	0	0	0	0	0	0	1	0	0	0	0
1800	0	0	0	0	0	0	0	1	0	0	0	0
1650	0	0	0	0	0	0	0	1	0	0	0	0
1620	0	0	0	0	0	0	0	1	0	0	0	0
1445	0	0	0	0	0	0	0	1	0	0	0	0
1125	0	0	0	0	0	0	0	1	0	0	0	0
1120	0	0	0	0	0	0	0	1	0	0	0	0
775	0	0	0	0	0	0	0	1	0	0	0	0
685	0	0	0	0	0	0	0	1	0	0	0	0
600	0	0	0	0	0	0	0	1	0	0	0	0
599	0	0	0	0	0	0	0	1	0	0	0	0
595	0	0	0	0	0	0	0	1	0	0	0	0
530	0	0	0	0	0	0	0	1	0	0	0	0
495	0	0	0	0	0	0	0	1	0	0	0	0
420	0	0	0	0	0	0	0	1	0	0	0	0
395	0	0	0	0	0	0	0	1	0	0	0	0
310	0	0	0	0	0	0	0	1	0	0	0	0
285	0	0	0	0	0	0	0	1	0	0	0	0
255	0	0	0	0	0	0	0	1	0	0	0	0

Lampiran 2. Dokumentasi Alat dan Bahan Penelitian



Mikropipet



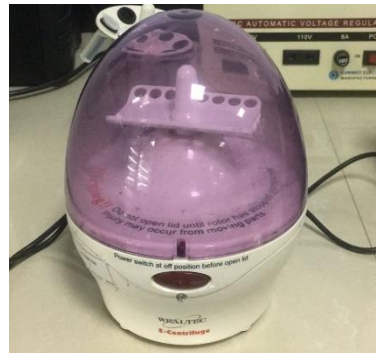
Timbangan Analitik



Qubit 3 Fluorometer



Mesin PCR



Spin down



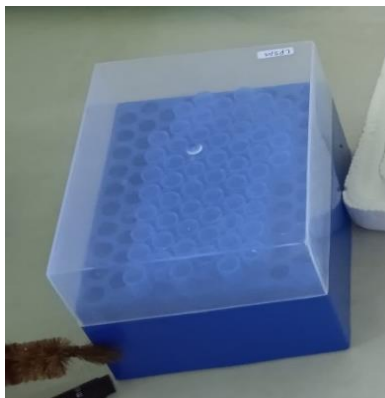
UV Transilluminator



Microtube 1,5 mL



Mesin elektroforesis



Tip

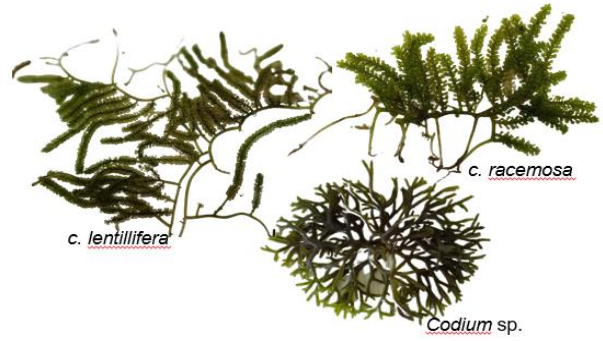


Vorteks



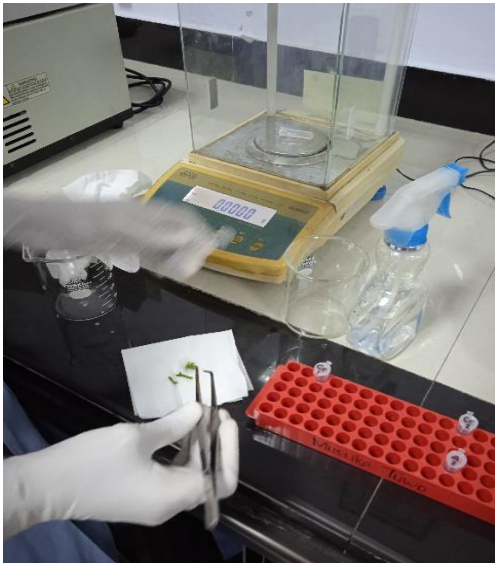


Waterbath

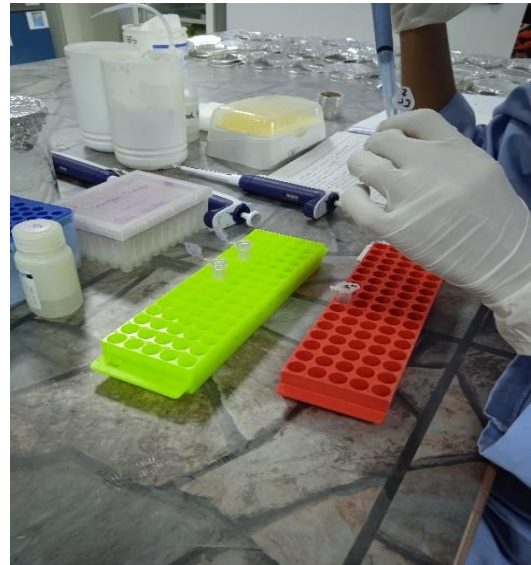


Sampel Penelitian

Lampiran 3. Dokumentasi Kegiatan



Proses menimbang sampel



Penambahan *buffer* lisis



Melakukan *vortexing* sampe



Inkubasi sampel dalam *waterbath*



Melakukan sentrifugasi sampel



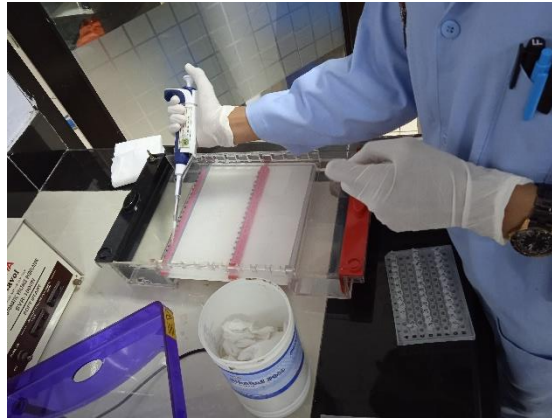
Proses saat sampel dikering-anginkan



Membuat mix PCR



Melakukan *spin down*



Melakukan proses elektroforesis