

DAFTAR PUSTAKA

- Anisa, Y., A. A. Zulfikar & T. S. Raza'i. 2015. Kebiasaan Makanan Ikan Tamban (*Sardinella Fimbriata*) Di Desa Malang Rapat Kabupaten Bintan Provinsi Kepulauan Riau. Universitas Maritim Raja Ali Haji.
- Apriyanto., M. 2021. Verifikasi Metode Penentuan Kromium Heksavalen Termigrasi Pada Kemasan Polipropilena Menggunakan Spektrofotometer UV-VIS. Program Studi Analisis Kimia, Sekolah Vokasi. Institut Pertanian Bogor. Bogor
- Arias, H.A., Ronda. A. C., Olivia. A & Marcovecchio. J. 2019. Evidence of Microplastic Ingestion by Fish From The Bahia Blanca Estuary in Argentina, South America. *Bulletin of Environmental Contamination and Toxicology*. Vol 102 (6) : 750 - 756
- Asyari & K. Fatah. 2011. Kebiasaan Makan Dan Biologi Reproduksi Ikan Motan (*Thynnichthys Polylepis*) Di Waduk Koto panjang Riau. Vol 3 (4) : 217 - 224
- Browne, M.A., Dissanayake, A., Galloway T.S., Lowe, D.M., Thompson, R. C. 2008. Ingested Microscopic Plastic Translocates to the Circulatory System of the Mussel, *Mytilus Edulis* (L). *Environmental Science & Technology*. Vol 42 (13) : 26 - 31
- Browne, M. A, Crump, P., Niven, S. J., Teuten, A., Tonkin, A., Galloway, T., & Thompson, R. 2011. Accumulation of Microplastic on Shorelines Worldwide : Sources and Sinkd. 9175 - 9179.
- Casto, P. & Huber, M. .. 2003. *Marine Biology*. 4th ed. The McGraw-Hill Companies.
- CBD. Convention on Biological Diversity- STAP. 2012. Impacts of Marine Debris on Biodiversity Currents Status and Potential Pollution. *CBD Technical 67*.
- Cindy Amelinda. 2020. Keberadaan Partikel Mikroplastik Pada Ikan Bandeng (*Chanos chanos*) di Tambak Desa BontoManai Kabupaten Pangkep. Skripsi. Program Studi Ilmu Kelautan, Fakultas Ilmu Kelautan dan Perikanan, Universitas Hasanuddin. Makassar.
- Critchell, K. & Hoogenboom, M.O. 2018. Effects of microplastic exposure on the body condition and behavior of planktivorous reef fish (*Acanthochromis polyacanthus*).
- Dara, S. Agung, Y. & Delfri, Y. 2019. Kandungan Mikroplastik Pada Empat Jenis Ikan Ekonomis Penting di Perairan Selat Bali. Program Studi Ilmu Kelautan, FPIK, Universitas Brawijaya. Malang. *Jurna Iktiologi Indonesia* 20 (1) : 1 - 12.
- Derakhsh, M.P., Moradi, M.A., I. Sharifpour., Sh. Jamili. 2017. Toxic Effects of Diclofenac on Gills, Liver and Kidney of *Cyprinus carpio* (Linnaeus, 1958). *Iranian Journal of Fisheries Science* 19(2) : 35 – 47.
- Dewi, I.S., Budiarsa, A.A., Irwan, R.R. 2015. Distribusi Mikroplastik Pada Sedimen di Muara Badak, Kabupaten Kutai Kartanegara. *DEPIK* 4 (3) : 121 - 131.
- Duray, M. N. 1998. "Biology and Culture of Siganids."

- Fitri Ichlasia Ainul. 2017. Studi Awal Mikroplastik Pada Kerang Darah (*Anadara Granosa*) Dari Tambak Lorok Semarang. Universitas Katolik Soegijapranata.
- Foekema, E. M., De Gruijter, C., Mergia, M. T., van Franeker, J.A., Murk, A. J., & Koelmans, A. A. 2013. *Plastic in North Sea Fish. Environ. Sci. Technol.* 2013, 47 (15) : 818 – 824.
- Framegari, V., Nirwani, N., Santosa, G.W., 2012. Studi herbivori rumput laut *Kappaphycus alvarezii* (Doty) oleh ikan baronang *Siganus* sp. pada salinitas yang berbeda. *Journal of Marine Research* 1: 48-53
- GESAMP. 2019. Guidelines or the Monitoring and Assessment of Plastic Litter and Microplastics in the Ocean. *Experts on the Scientific Aspects of Marine Environmental Protection* (99).
- Ghufran M. H. & Kordi K. 2005. Budidaya Ikan Baronang. *Rineka Cipta. Jakarta.*
- Goede, R.W., & Barton, B. A. 1990. Organismic Indices and an Autopsy-Based Assessment as Indicators of Health and Condition in Fish. *American Fisheries Society Symposium*: 93 – 108.
- Goss, H., Jaskiel, J., Rotjan, R., 2018. *Thalassia testudinum* as a potential vector for incorporating microplastics into benthic marine food webs. *Marine Pollution Bulletin* 135 : 1085 - 1089.
- Hidalgo-Ruz, V., Gutow, L., Thompson, R. C., & Thiel, M. 2012. Microplastics in the Marine Environment: A Review of the Methods Used for Identification and Quantification. *Science & Technology* 46: 30, 60 – 75.
- Irwan. 2008. Kajian Pola Pertumbuhan Dan Ciri Morfometrik-Meristik Beberapa Spesies Ikan Layur Di Perairan Pelabuhan Ratu, Sukabumi Jawa Barat. Institut Pertanian Bogor.
- Ishak, A. 2001. Komposisi Makanan Iktiofauna Yang Dominan Tertangkap Di Daerah Padang Lamun Tanjung Tiram. Skripsi. Fakultas Pertanian Jurusan Perikanan. Universitas Halu Oleo. Kendari.
- Jambeck R., J., Roland G., Chris., Theodore R., S., Miriam P., Anthony A., Ramani N. & Kara L. 2015. Plastic Was Input from Land Into The Ocean. *Journal Science* 347 : 68 – 71.
- Jin, Y., Zhang, X., Shu, L., Chen, L., Sun, L., Qian, H., Liu, W., Fu, Z. 2010. Oxidative Stress Response and Gene Expression With Atrazine Exposure in Adult Female Zebrafish (*Danio Rerio*). *Chemosphere* 78: 846 – 852.
- Jumriani (2017) Morfometrik dan Meristik Ikan Baronang Lingkis (*Siganus canaliculatus* Park, 1797) di Perairan Selat Makassar dan Teluk Bone. Universitas Hasanuddin.
- Kadi, A. 2006. *Beberapa Catatan Kehadiran Marga Sargassum Di Perairan Indonesia*. Jakarta: Pusat Penelitian Oseanografi Lembaga Ilmu Pengetahuan Indonesia (P2O-LIPI).

- Katsanevakis, S., & Katsarou, A. 2004. Influences on The Distribution of Marine Debris on the Seafloor of Shallow Coastal Areas in Greece (Eastern Mediterranean). *Water Air and Soil Pollution* 159 (1) : 325 - 337.
- Kiriratnikom, S., & Kiriratnikom, A. 2012. Growth, Feed Utilization Survival And Body Composition of Fingerlings of Slender Walking Catfish, *Clarias Nieohofii*, Fat Diets Containing Different Protein Levels. *Songklanakarin Journal of Science and Technology*, 34(1):37-43.
- Kordi, M. G. H. 2003. *Budidaya Ikan Baronang*. Jakarta: Rineka Cipta.
- Latuconsina, H, Ambo-Rappe R & Nessa, M. N. 2013. Asosiasi Ikan Baronang (*Siganus canaliculatus* Park, 1797) Pada Ekosistem Padang Lamun Perairan Teluk Ambon Dalam. *Ikhtologi Indonesia* 13(1): 35 – 53.
- Law, K. L., Thompson, R.C. 2014. Microplastics in the Seas. *Science* 345 (6193) : 144 – 145.
- Law, T. J. 1974. Siganids: Their Biology and Mariculture Potential. *Aquaculture* 3: 25–54.
- Lei, L., Wu, S., Lu, S., Liu, M., Song, Y., Fu, Z., Shi, H., Raley-Susman, K.M., He, D. 2018. Microplastic Particles Cause Intestinal Damage and Other Adverse Effects in Zebrafish *Danio Rerio* and Nematode *Caenorhabditis Elegans*. *Science of the Total Environment* Vol. 619 – 620 (2018) : 1 - 8.
- Lu, Y., Zhang, Y., Deng, Y., Jiang, W., Zhao, Y., Geng, J., Ding, L., Ren, H. 2016. Response to Comment on Uptake and Accumulation of Polystyrene Microplastics in Zebrafish (*Danio Rerio*) and Toxic Effects in Liver. *Technol* 50 : 54 – 60.
- Lusher, A. L., Peter H. & Jeremy M. 2017. *Microplastics in Fisheries and 81 Aquaculture*. Food and A. Roma.
- Mark, B. A., Galloway, T. S., Lowe, D. M., & Thompson, R. C. 2008. Ingested Microscopic Plastic Translocates to the Circulatory System of the Mussel, *Mytilus edulis*. *Environmental Science & Technology*, 42 (13) : 5026-5031.
- Masura, B., G. Foster dan C. Arthur., 2015. *Laboratory Methods for the Analysis of Microplastic in the Marine Environment*. NOAA Teach. Memo. NOS-OR & R-48.
- Masura, J., Baker, J., Foster, G., & Arthur, C. 2015. Laboratory Methods for the Analysis of Microplastics in the Marine Environment: Recommendations for Quantifying Synthetic Particles in Waters and Sediments.
- Merta, I. G. S. 1982. Studi Ekonomi Ikan Baronang, *Siganus Canaliculatus* (Park,1797), Di Perairan Teluk Banten, Pantai Utara Jawa Barat. Institut Pertanian Bogor.
- Moore, C. J. 2008. Synthetic Polymers in the Marine Environment : A Rapidly Increasing 108 : 31 – 39.
- Muliati, F., Yasidi & Arami, H. 2017. Studi Kebiasaan Ikan Baronang (*Siganus Canaliculatus*) Di Perairan Tondonggeu Kecamatan Abeli Sulawesi Tenggara. *Manajemen Sumber Daya Perairan* 2(4): 87 – 94.

- Munira. 2010. Distribusi Dan Potensi Stok Ikan Baronang (*Siganus Canaliculatus*) Di Padang Lamun Slat Lonthoir, Kepulauan Banda, Maluku. Institut Pertanian Bogor.
- Nontji. A. 2002. *Laut Nusantara*. Jakarta: PT. Djambatan.
- Nybakken. 1992. *Salinitas Air Laut*. 1st ed. Bandung: Erlangga.
- Opfer, S., Arthur, C., & Lippiatt, S. 2012. Marine Debris Shoreline Survey Field Guide. NOAA.
- Ory, N.C., P. Sobral, J.L. Ferreira, & M. Thiel. 2017. Amberstripe scad *Decapterus muroadsi* (Carangidae) fis ingest blue microplastics resembling their copepod prey along the coast of Pacific subtropical gyre. *Sci. Total Environ.*, 586: 430-437.
- Pedrotti, M. 2014. Plastic fragments on the surface of Mediterranean waters. CIESM Workshop Monographs n°46. Marine litter in the Mediterranean and black seas-Tirana, Albania. s.l., s.n.
- Pramita, A., Ali, R., Chrisna, A. S. 2020. Mikroplastik Pada Sedimen di Pantai Kartini Kabupaten Jepara, Jawa Tengah. Departemen Ilmu Kelautan, Fakultas Perikanan dan Ilmu Kelautan, Universitas Diponegoro. Semarang. *Journal of Marine Research* Vol 9, No 3 pp (326-332).
- Putra, W.A.K., Yulianto, T., Miranti, S., Zulpikar & Ariska, R. 2020. Tingkat Kematangan Gonad, Gonad somatik Indeks Dan Hepatosomatik Indeks Ikan Sembilang (*Plotus Sp.*) Di Teluk Pulau Bintan. *Ruaya* 8(1) : 2549–3155.
- Rahmad, L. 2014. Suhu Di Perairan. Universitas Sumatera Utara. Medan.
- Rahmat, S. Neviaty, P. Zamani, Shinta, W. & Meutia, S. Ismet. 2020. Akumulasi Mikroplastik Pada Spesies Ikan Ekonomis Penting di Perairan Pulau Barrang Lompo Makassar. Program Studi Ilmu Kelautan, Sekolah Pascasarjana, IPB University. Bogor. *Jurnal Ilmu dan Teknologi Kelautan Tropis* 13(2), 241-259
- Rauf, A. 2008. Pengembangan Terpadu Pemanfaatan Ruang Kepulauan Tanakeke Berbasis Daya Dukung. Disertasi Institut Pertanian Bogor. Bogor.
- Rist SE, Assidqi K, Zamani NP, Appel D, Perschke M, Huhn M, Lenz, M. 2016. Suspended micro-sized PVC particles impair the performance and decrease survival in the Asian green mussel *Perna viridis*. *Marine Pollution Bulletin* 111(1): 213 – 220
- Rochman, C.M., Kurobe, T., Flores, I., Teh, S.J. 2014. Early Warning Signs of Endocrine Disruption in Adult Fish From the Ingestion of Polyethylene With and Without Sorbed Chemical Pollutants From the Marine Environment. *Total Environ.* (493,): 656 – 661.
- Romano, N., Ashikin, M., Teh, J.C., Syukri, F., Karami, A. 2018. Effects of Pristine Polyvinyl Chloride Fragments on Whole Body Histology and Protease Activity In Silver Barb *Barbodes Gonionotus* Fry. *Environmental pollution* (237): 1-6.
- Sadekar pawar, S., & Parikh, P. 2013. Gonadosomatic and Hepatosomatic Indices of Freshwater Fish *Oreochromis Mossambicus* in Response To a Plant Nutrient. University of Baroda, Vadodara, India.
- Sawalman., R. 2019. Kelimpahan Mikroplastik Pada Bulu Babi (*Diadema setosum* dan *Tripneustes gratilla*) di Area Padang Lamun Pulau Barrang Lompo, Makassar.

Program Studi Ilmu Kelautan, Fakultas Ilmu Kelautan dan Perikanan, Universitas Hasanuddin. Makassar.

- Singh, S. & Srivastava, A. K. 2015. Variations in Hepatosomatic Index (HSI) and Gonadosomatic Index (GSI) in Fish *Heteropneustes Fossilis* Exposed to Higher Sublethal Concentration to Arsenic and Copper. *The Academy of Environmental Biology, India*. 15(3 & 4): 89 – 93.
- Singh B., & N. Sharma. 2008. Mechanistic Implications of Plastic Degradation. *Polymer Degradation and Stability* 93 (2008) : 561-584.
- Susan, L. M. 2015. Taxon *Siganus Canaliculatus* (Park, 1797).
- Siti, A. Lestari. 2020. Mikroplastik Pada Kolom Air di Perairan Kota ParePare. Program Studi Ilmu Kelautan, Fakultas Ilmu Kelautan dan Perikanan, Universitas Hasanuddin. Makassar.
- Thompson, R. C., Olsen, Y., Richard, P., Mitchell, Davis, A., Steven, J., Rowland, Anthony W. G., John, Daniel, M., Andrea, E., Russell. 2004. Lost at sea : where is all the plastic? *Science*, p. 838. (Hirai, 2011).
- Tresnati, J., Tauhid, M.U., & Silfirayana. 2018. "Perubahan Hati Terkait Oosit Ikan Sebelah (*Psettodes Erumei*)." Universitas Hasanuddin. Makassar.
- Veerasingam, S., Saha, M., Suneel, V., Vethamony, P., Rodrigues, A.C., Bhattacharyya, S., Naik, B.G., 2016. Characteristics, seasonal distribution and surface degradation features of microplastic pellets along the Goa coast, India. *Chemosphere* 159, 496-505.
- Widianarko, B. & Hantoro, I. 2018. Mikroplastik Dalam Seafood Dari Pantai Utara Jawa. Universitas Katolik Soegijapranata, Semarang.
- Xiaohua Xia, Menghan Sun, Miao Zhou, Zhongjie Chang, Li Li. 2019. Polyvinyl Chloride Microplastics Induce Growth Inhibition and Oxidative Stress In *Cyprinus carpio* Var. Larvae. *Pre-Proof* 8 – 10.
- Yin, L., H. Liu, H. Cui, B. Chen, L. Li, & F. Wu. 2019. Impacts of polystyrene microplastics on the behavior and metabolism in a marine demersal teleost, black rockfish (*Sebastes schlegelii*). *J. Hazard. Mater.*, 380: 1-8.
- Zhang, J., H. Guo, Z. Ma, S. Jiang, K. Wu, Y. Li, & J.G. Qin. 2015. Effects of prey color, wall color and water color on food ingestion of larval orange-spotted grouper *Epinephelus coioides* (Hamilton, 1822). *Aquac. Int.*, 23(6): 1377-1386.
- Zulfahmi I, Ridwan A, dan Djamar TFL. 2015. Perubahan Struktur Histologis Insang dan Hati Ikan Nila (*Oreochromis niloticus linnaeus* 1758) yang Terpapar Merkuri. *Jurnal Edukasi dan Sains Biologi*, 4 (1): 25 - 31.
- Zulfahmi I, Muliari, Mawaddah I. 2017 Toksisitas Limbah Cair Kelapa Sawit Terhadap Ikan Nila (*Oreochromis niloticus linnaeus* 1758) dan Ikan Bandeng (*Chanos chanos* Forskal 1755). *Agricola*, 7(1): 44 - 55.

LAMPIRAN

Lampiran 1. Tabel

Data morfologi ikan baronang lingkis

Kode Sampel (n)	Panjang Total (cm)	Berat Total (gr)	Berat Hati (gr)
1	20.6	178	0.88
2	19.9	154	1.43
3	18.8	137	2.15
4	18.2	113	1.55
5	18.4	120	1.84
6	14.2	59	0.64
7	15.5	83	1.07
8	15.7	71	1.41
9	14.2	56	0.91
10	15	74	1.43
11	17.3	101	1.82
12	17	102	1.98
13	19.1	142	2.14
14	18.5	127	2.07
15	20.2	158	2.29
16	15.1	69	0.99
17	18.8	123	1.18
18	18.4	131	2.03
19	16.4	79	1.56
20	17	94	2.11
21	16.9	90	1.30
22	18.3	135	2.94
23	18.5	123	2.26
24	15.9	77	1.73
25	20.1	175	3.73
26	18.5	112	2.04
27	18.1	108	2.31
28	17.5	105	1.82
29	18.4	122	2.65
30	17.4	102	1.21
31	17.5	102	2.38
32	16.7	83	1.55
33	15.5	74	0.81
34	16.2	75	0.91
35	15.6	79	1.53
36	16.9	92	1.47
37	16.9	91	1.27
38	15.6	68	1.35
39	15.1	71	0.91

40	17.3	105	1.56
41	16.4	74	1.35
42	14.5	60	0.86
43	15	67	1.86
44	15.3	71	1.29
45	15.3	68	1.5
46	15	64	0.59
47	15.8	71	1.10
48	14.5	60	1.08
49	14.1	53	0.99
50	13.4	48	1.04

Keterkaitan MP terhadap berat hati dan HSI

Kode Sampel (n)	Jumlah MP	Berat Total (gr)	Berat Hati (gr)	HSI
1	3	178	0.88	0.49
2	6	154	1.43	0.93
3	7	137	2.15	1.57
4	7	113	1.55	1.37
5	7	120	1.84	1.53
6	6	59	0.64	1.08
7	4	83	1.07	1.29
8	7	71	1.41	1.99
9	6	56	0.91	1.63
10	7	74	1.43	1.93
11	7	101	1.82	1.80
12	8	102	1.98	1.94
13	9	142	2.14	1.51
14	7	127	2.07	1.63
15	5	158	2.29	1.45
16	13	69	0.99	1.43
17	7	123	1.18	0.96
18	7	131	2.03	1.55
19	4	79	1.56	1.97
20	11	94	2.11	2.24
21	10	90	1.3	1.44
22	4	135	2.94	2.18
23	5	123	2.26	1.84
24	7	77	1.73	2.25
25	5	175	3.73	2.13
26	9	112	2.04	1.82
27	7	108	2.31	2.14
28	3	105	1.82	1.73

29	5	122	2.65	2.17
30	10	102	1.21	1.19
31	3	102	2.38	2.33
32	5	83	1.55	1.87
33	3	74	0.81	1.09
34	3	75	0.91	1.21
35	3	79	1.53	1.94
36	6	92	1.47	1.60
37	3	91	1.27	1.40
38	7	68	1.35	1.99
39	10	71	0.91	1.28
40	5	105	1.56	1.49
41	15	74	1.35	1.82
42	8	60	0.86	1.43
43	4	67	1.86	2.78
44	6	71	1.29	1.82
45	4	68	1.5	2.21
46	8	64	0.59	0.92
47	5	71	1.1	1.55
48	4	60	1.08	1.80
49	2	53	0.99	1.87
50	6	48	1.04	2.17

Keterkaitan Panjang, Berat dan HSI terhadap kelimpahan MP

Kode Sampel (n)	Panjang Ikan (cm)	Berat Ikan (gr)	HSI	Kelimpahan MP (item/individu)	Kategori kelimpahan MP
1	14,1	53	1,87	2	
2	20,6	178	0,49	3	
3	17,5	105	1,73	3	
4	17,5	102	2,33	3	1-3
5	15,5	74	1,09	3	
6	16,2	75	1,21	3	
7	15,6	79	1,94	3	
8	16,9	91	1,40	3	
9	15,5	83	1,29	4	
10	16,4	79	1,97	4	
11	18,3	135	2,18	4	
12	15	67	2,78	4	
13	15,3	68	2,21	4	4-6
14	14,5	60	1,80	4	
15	20,2	158	1,45	5	
16	18,5	123	1,84	5	
17	20,1	175	2,13	5	

18	18,4	122	2,17	5	
19	16,7	83	1,87	5	
20	17,3	105	1,49	5	
21	15,8	71	1,55	5	
22	19,9	154	0,93	6	
23	14,2	59	1,08	6	
24	14,2	56	1,63	6	
25	16,9	92	1,60	6	
26	15,3	71	1,82	6	
27	13,4	48	2,17	6	
28	18,8	137	1,57	7	
29	18,2	113	1,37	7	
30	18,4	120	1,53	7	
31	15,7	71	1,99	7	
32	15	74	1,93	7	
33	17,3	101	1,80	7	
34	18,5	127	1,63	7	
35	18,8	123	0,96	7	
36	18,4	131	1,55	7	7-9
37	15,9	77	2,25	7	
38	18,1	108	2,14	7	
39	15,6	68	1,99	7	
40	17	102	1,94	8	
41	14,5	60	1,43	8	
42	15	64	0,92	8	
43	19,1	142	1,51	9	
44	18,5	112	1,82	9	
45	16,9	90	1,44	10	
46	17,4	102	1,19	10	
47	15,1	71	1,28	10	10-13
48	17	94	2,24	11	
49	15,1	69	1,43	13	
50	16,4	74	1,82	15	>13

Kelimpahan mikroplastik pada sampel ikan

Kode Sampel (n)	Jumlah	Bentuk	Warna	Ukuran (mm)
1	3	Line	Mera Muda	8.670
		Line	Biru	1.248
		Line	Biru	1.842
2	6	Line	Biru	1.644
		Line	Biru	1.125
		Line	Biru	0.507
		Line	Biru	1.275

		Line	Biru	4.294
		Line	Ungu	4.870
		Line	Biru	0.928
		Line	Biru	0.501
		Line	Biru	0.794
3	7	Line	Biru	1.555
		Line	Biru	4.032
		Line	Ungu	0.936
		Line	Ungu	4.062
		Line	Biru	0.819
		Line	Biru	0.996
		Line	Biru	1.126
4	7	Line	Biru	2.439
		Line	Biru	1.877
		Line	Ungu	2.192
		Line	Mera Muda	0.689
		Line	Biru	1.939
		Line	Biru	1.481
		Line	Biru	1.330
5	7	Line	Biru	1.113
		Line	Biru	2.853
		Line	Biru	9.124
		Line	Ungu	0.979
		Line	Biru	0.371
		Line	Biru	0.793
		Line	Biru	1.027
6	6	Line	Ungu	0.621
		Line	Ungu	1.063
		Line	Ungu	2.426
		Line	Biru	2.038
7	4	Line	Biru	2.045
		Line	Ungu	1.158
		Line	Ungu	3.666
		Line	Biru	0.584
		Line	Biru	0.686
		Line	Biru	0.598
8	7	Line	Biru	1.546
		Line	Biru	1.266
		Line	Biru	2.522
		Line	Ungu	1.320
		Line	Biru	1.403
9	6	Line	Biru	1.680
		Line	Ungu	1.455
		Line	Ungu	1.908

		Line	Ungu	2.315
		Fragmen	orange	0.126
		Line	Biru	0.828
		Line	Biru	0.643
		Line	Ungu	1.206
10	7	Line	Transparan	0.711
		Line	Transparan	0.541
		Line	Transparan	0.661
		Line	Transparan	1.383
		Line	Biru	1.653
		Line	Biru	2.606
		Line	Biru	3.848
11	7	Line	Ungu	1.742
		Line	Ungu	1.235
		Line	Ungu	3.227
		Fragmen	Ungu	0.439
		Line	Biru	0.476
		Line	Biru	1.315
		Line	Biru	1.148
12	8	Line	Biru	2.012
		Line	Biru	1.690
		Line	Biru	2.239
		Line	Ungu	1.129
		Line	Ungu	2.714
		Line	Biru	0.524
		Line	Biru	0.893
		Line	Biru	0.725
13	9	Line	Biru	0.804
		Line	Biru	2.507
		Line	Biru	3.085
		Line	Biru	2.967
		Line	Biru	3.314
		Line	Ungu	4.794
		Line	Biru	0.245
		Line	Biru	0.995
		Line	Biru	0.566
14	7	Line	Biru	1.721
		Line	Biru	1.291
		Line	Biru	6.201
		Line	Ungu	2.055
		Line	Biru	1.018
15	5	Line	Biru	1.941
		Line	Ungu	1.217
		Line	Ungu	2.101

		Line	Ungu	2.112
		Line	Biru	1.541
		Line	Biru	1.565
		Line	Biru	2.441
		Line	Biru	1.849
		Line	Biru	2.134
		Line	Biru	2.498
16	13	Line	Biru	1.228
		Line	Biru	1.295
		Line	Biru	1.509
		Line	Biru	2.452
		Line	Biru	2.658
		Line	Ungu	2.592
		Line	Ungu	2.043
		Line	Biru	0.722
		Line	Biru	0.683
		Line	Biru	1.655
17	7	Line	Biru	2.028
		Line	Ungu	1.732
		Line	Ungu	3.560
		Line	Ungu	1.834
		Line	Biru	0.728
		Line	Biru	1.760
		Line	Biru	1.540
18	7	Line	Biru	1.246
		Line	Biru	0.794
		Line	Biru	1.573
		Line	Biru	3.866
		Line	Biru	0.956
19	4	Line	Ungu	2.104
		Line	Ungu	2.598
		Line	Ungu	2.634
		Line	Biru	2.451
		Line	Biru	1.171
		Line	Biru	1.069
		Line	Biru	2.163
		Line	Biru	4.572
20	11	Line	Ungu	0.955
		Line	Ungu	0.668
		Line	Ungu	1.518
		Line	Ungu	2.183
		Line	Mera Muda	2.367
		Line	Transparan	1.072
21	10	Line	Biru	0.554

		Line	Biru	0.775
		Line	Biru	1.211
		Line	Biru	0.243
		Line	Biru	1.350
		Line	Biru	1.633
		Line	Biru	1.938
		Line	Ungu	0.548
		Line	Ungu	3.491
		Line	Mera Muda	0.686
		Line	Biru	0.465
22	4	Line	Biru	1.236
		Line	Ungu	0.271
		Line	Ungu	1.367
		Line	Biru	0.110
		Line	Biru	0.807
23	5	Line	Ungu	0.969
		Line	Ungu	2.413
		Line	Mera Muda	1.102
		Line	Biru	1.222
		Line	Biru	1.354
		Line	Biru	1.731
24	7	Line	Biru	2.319
		Line	Mera Muda	1.551
		Line	Mera Muda	1.556
		Line	Mera Muda	4.769
		Line	Biru	0.772
		Line	Biru	1.385
25	5	Line	Biru	0.988
		Line	Biru	1.149
		Line	Biru	2.474
		Line	Biru	0.257
		Line	Biru	0.488
		Line	Biru	0.540
		Line	Biru	0.668
26	9	Line	Biru	0.693
		Line	Biru	0.708
		Line	Biru	0.888
		Line	Mera Muda	0.185
		Line	Mera Muda	1.281
		Line	Biru	0.198
		Line	Biru	0.857
27	7	Line	Biru	0.691
		Line	Biru	1.123
		Line	Biru	0.413

		Line	Biru	0.316
		Line	Biru	0.423
		Line	Biru	0.452
28	3	Line	Ungu	0.620
		Line	Mera Muda	2.178
		Line	Biru	0.228
		Line	Biru	0.382
29	5	Line	Biru	0.451
		Line	Biru	0.710
		Line	Biru	0.595
		Line	Biru	0.808
		Line	Biru	0.655
		Line	Biru	0.814
		Line	Biru	0.670
30	10	Line	Biru	1.135
		Line	Ungu	0.651
		Line	Hitam	0.578
		Line	Hitam	1.446
		Line	Mera Muda	0.292
		Line	Mera Muda	1.090
		Line	Biru	1.249
31	3	Line	Ungu	1.881
		Line	Ungu	1.141
		Line	Ungu	1.359
		Line	Ungu	2.045
32	5	Line	Ungu	1.528
		Line	Biru	1.354
		Line	Biru	0.599
		Line	Biru	1.661
33	3	Line	Biru	2.040
		Line	Biru	4.140
		Line	Biru	1.702
34	3	Line	Biru	1.597
		Line	Biru	1.322
		Line	Biru	0.880
35	3	Line	Biru	1.067
		Line	Biru	2.629
		Line	Biru	0.652
		Line	Biru	1.322
36	6	Line	Biru	1.192
		Line	Biru	1.951
		Line	Biru	3.578
		Line	Biru	8.495
37	3	Line	Ungu	1.364

		Line	Ungu	0.763
		Line	Biru	1.120
		Line	Ungu	0.412
		Line	Ungu	0.903
		Line	Ungu	0.900
38	7	Line	Ungu	2.460
		Line	Ungu	2.033
		Line	Biru	0.475
		Line	Hitam	0.409
		Line	Biru	0.227
		Line	Biru	0.310
		Line	Biru	0.255
		Line	Biru	0.299
39	10	Line	Biru	0.301
		Line	Biru	1.048
		Line	Ungu	0.276
		Line	Ungu	0.541
		Line	Mera Muda	0.107
		Line	Mera Muda	1.451
		Line	Biru	0.477
		Line	Biru	0.458
40	5	Line	Biru	0.725
		Line	Ungu	1.326
		Line	Mera Muda	0.507
		Line	Biru	2.307
		Line	Biru	0.856
		Line	Biru	1.789
		Line	Biru	0.382
		Line	Biru	0.977
		Line	Biru	0.378
		Line	Biru	0.701
41	15	Line	Biru	0.795
		Line	Biru	4.410
		Line	Biru	4.036
		Line	Ungu	1.574
		Line	Ungu	3.353
		Line	Ungu	3.160
		Line	Ungu	5.662
		Line	Mera Muda	0.870
		Line	Biru	1.311
		Line	Biru	0.590
42	8	Line	Biru	5.751
		Line	Ungu	1.398
		Line	Ungu	1.398

		Line	Coklat	2.703
		Line	Transparan	0.948
		Line	Transparan	1.204
		Line	Biru	0.759
43	4	Line	Biru	1.284
		Line	Biru	1.884
		Line	Biru	2.975
		Line	Biru	0.586
		Line	Biru	2.618
44	6	Line	Biru	1.426
		Line	Mera Muda	0.552
		Line	Mera Muda	0.472
		Line	Hijau	1.189
		Line	Biru	0.524
45	4	Line	Biru	0.868
		Line	Biru	1.021
		Line	Biru	3.538
		Line	Biru	1.708
		Line	Biru	0.886
		Line	Biru	1.645
46	8	Line	Biru	1.220
		Line	Ungu	1.512
		Line	Ungu	2.659
		Line	Ungu	2.477
		Line	Mera Muda	1.502
		Line	Biru	0.829
		Line	Biru	0.768
47	5	Line	Biru	0.725
		Line	Biru	0.430
		Line	Biru	1.389
		Line	Biru	1.048
48	4	Line	Biru	1.428
		Line	Biru	2.540
		Line	Biru	5.958
49	2	Line	Biru	1.033
		Line	Biru	4.840
		Line	Biru	0.422
		Line	Biru	0.494
50	6	Line	Biru	0.713
		Line	Biru	1.053
		Line	Biru	1.138
		Line	Biru	1.193

Kelimpahan mikroplastik pada sampel air

Stasiun	Ulangan	Total	Bentuk	Warna	Ukuran (cm)
I	1	23	Line	Hitam	2.338
			Line	Hitam	1.988
			Line	Hitam	0.791
			Line	Hitam	0.364
			Line	Hitam	0.775
			Line	Hitam	1.418
			Line	Merah Muda	1.418
			Line	Merah Muda	0.332
			Line	Merah Muda	0.404
			Line	Merah Muda	2.879
			Line	Merah Muda	0.969
			Line	Merah Muda	0.539
			Line	Merah Muda	0.203
			Line	Merah Muda	0.930
			Line	Biru	0.232
			Line	Biru	2.956
			Line	Biru	0.205
			Line	Coklat	0.994
			Line	Coklat	2.103
			Line	Ungu	0.181
			Line	Ungu	0.230
			Line	Ungu	0.713
			Line	Kuning	0.979
Line	Ungu	0.701			
Line	Ungu	0.410			
Line	Ungu	1.365			
Line	Ungu	1.733			
Line	Ungu	0.891			
Line	Ungu	1.254			
Line	Ungu	0.853			
Line	Ungu	0.443			
Line	Ungu	0.840			
	2	26	Line	Biru	1.070
			Line	Biru	0.768
			Line	Biru	1.149
			Line	Biru	0.360
			Line	Biru	0.726
			Line	Biru	0.396
			Line	Biru	0.381
			Line	Biru	0.558
			Line	Hijau	1.224
Line	Hitam	2.405			

		Line	Hitam	0.367
		Line	Coklat	1.529
		Line	Transparan	0.909
		Line	Transparan	1.038
		Line	Transparan	1.720
		Line	Transparan	0.441
		Line	Merah Muda	0.442
	2	Fragmen	Biru	0.412
		Fragmen	Biru	0.467
		Line	Hijau	1.220
		Line	Hijau	1.594
		Line	Hijau	1.445
		Line	Hijau	2.441
		Line	Hijau	1.713
		Line	Kuning	1.279
		Line	Kuning	1.975
		Line	Hitam	0.394
		Line	Hitam	0.263
		Line	Hitam	1.256
		Line	Hitam	0.523
		Line	Hitam	0.471
		Line	Hitam	0.488
		Line	Hitam	1.390
		Line	Hitam	3.724
		Line	Hitam	0.740
		Line	Hitam	2.346
3	46	Line	Hitam	2.686
		Line	Biru	1.211
		Line	Biru	0.788
		Line	Biru	1.297
		Line	Biru	0.848
		Line	Biru	0.301
		Line	Biru	0.579
		Line	Biru	1.382
		Line	Biru	1.279
		Line	Biru	1.528
		Line	Biru	3.021
		Line	Biru	1.421
		Line	Merah Muda	1.166
		Line	Merah Muda	0.773
		Line	Merah Muda	0.346
		Line	Merah Muda	0.746
		Line	Merah Muda	1.157
		Line	Merah Muda	2.166

			Line	Merah Muda	0.967
			Line	Merah Muda	2.128
			Line	Merah Muda	0.482
			Line	Merah Muda	0.865
			Line	Transparan	0.414
			Line	Transparan	2.550
			Line	Transparan	1.149
			Line	Transparan	0.899
			Line	Transparan	1.072
			Line	Transparan	1.537
			Line	Coklat	1.011
		2	Fragmen	Ungu	0.129
			Fragmen	Ungu	0.165
			Line	Ungu	0.861
			Line	Ungu	0.803
			Line	Ungu	1.825
			Line	Ungu	2.906
			Line	Ungu	0.826
			Line	Ungu	1.883
			Line	Ungu	1.026
			Line	Ungu	2.955
			Line	Ungu	0.920
			Line	Biru	0.541
			Line	Biru	1.508
		24	Line	Biru	0.789
			Line	Biru	0.278
	4		Line	Biru	0.975
			Line	Biru	0.423
			Line	Biru	1.483
			Line	Merah Muda	1.122
			Line	Merah Muda	0.535
			Line	Merah Muda	0.296
			Line	Merah Muda	0.552
			Line	Merah Muda	2.131
			Line	Merah Muda	0.790
			Line	Merah Muda	2.305
			Line	Transparan	2.567
		2	Fragmen	Biru	0.077
			Fragmen	Biru	0.103
			Line	Biru	2.174
			Line	Biru	0.415
II	1	31	Line	Biru	1.271
			Line	Biru	0.565
			Line	Biru	0.254

Line	Merah Muda	0.206
Line	Merah Muda	0.540
Line	Merah Muda	0.601
Line	Merah Muda	2.069
Line	Merah Muda	0.227
Line	Merah Muda	0.993
Line	Merah Muda	0.886
Line	Merah Muda	1.317
Line	Merah Muda	0.552
Line	Hitam	1.614
Line	Hitam	0.700
Line	Transparan	0.851
Line	Transparan	0.713
Line	Orange	1.409
Line	Ungu	0.878
Line	Ungu	2.133
Line	Ungu	0.331
Line	Ungu	0.602
Line	Ungu	0.582
Line	Ungu	2.741
Line	Ungu	0.414
Line	Ungu	0.278
Line	Ungu	0.603
Line	Ungu	0.542
Line	Ungu	0.900
Line	Ungu	0.444
Fragmen	Biru	0.109
Fragmen	Biru	0.124
Fragmen	Biru	0.358
Fragmen	Biru	0.206
Fragmen	Ungu	0.053
Fragmen	Orange	0.1223
Line	Merah Muda	0.443
Line	Merah Muda	0.237
Line	Merah Muda	1.255
Line	Ungu	1.759
Line	Ungu	0.185
Line	Ungu	0.678
Line	Ungu	1.208
Line	Ungu	0.888
Line	Coklat	1.272
Line	Biru	1.867
Line	Biru	1.198
Line	Biru	0.205

6

2

17

3 46

Line	Biru	0.531
Line	Biru	0.47
Line	Biru	0.395
Line	Biru	0.308
Line	Transparan	0.428
Line	Merah Muda	1.397
Line	Merah Muda	1.084
Line	Merah Muda	3.129
Line	Merah Muda	1.314
Line	Merah Muda	1.066
Line	Merah Muda	1.175
Line	Merah Muda	0.490
Line	Merah Muda	0.913
Line	Merah Muda	0.718
Line	Biru	0.983
Line	Biru	0.528
Line	Biru	0.390
Line	Biru	1.796
Line	Ungu	1.394
Line	Ungu	2.524
Line	Ungu	4.425
Line	Ungu	0.438
Line	Ungu	0.541
Line	Ungu	0.196
Line	Ungu	0.232
Line	Ungu	0.723
Line	Ungu	1.381
Line	Ungu	0.515
Line	Ungu	0.506
Line	Ungu	0.729
Line	Ungu	1.230
Line	Ungu	1.792
Line	Ungu	0.374
Line	Ungu	0.681
Line	Ungu	0.765
Line	Ungu	0.416
Line	Ungu	1.718
Line	Ungu	0.751
Line	Ungu	1.023
Line	Ungu	0.507
Line	Ungu	0.700
Line	Hitam	0.458
Line	Transparan	1.177
Line	Transparan	0.681

		Line	Transparan	1.825
		Line	Transparan	0.470
		Line	Transparan	0.739
		Line	Transparan	1.837
		Line	Transparan	1.133
		Line	Transparan	0.879
		Line	Hijau	0.432
		Fragmen	Biru	0.190
		Fragmen	Biru	0.272
		Fragmen	Biru	0.121
		Fragmen	Biru	0.163
	10	Fragmen	Biru	0.149
		Fragmen	Ungu	0.138
		Fragmen	Hijau	0.135
		Fragmen	Hijau	0.143
		Fragmen	Hijau	0.255
		Fragmen	Orange	0.113
		Line	Merah Muda	0.436
		Line	Merah Muda	1.872
		Line	Merah Muda	0.872
		Line	Merah Muda	0.627
		Line	Merah Muda	0.459
		Line	Merah Muda	1.249
		Line	Merah Muda	1.567
		Line	Merah Muda	0.918
		Line	Merah Muda	0.987
		Line	Merah Muda	2.176
		Line	Coklat	0.827
		Line	Biru	0.930
		Line	Biru	0.205
4	29	Line	Biru	0.484
		Line	Biru	0.497
		Line	Biru	4.571
		Line	Biru	0.295
		Line	Transparan	1.077
		Line	Transparan	2.005
		Line	Transparan	0.354
		Line	Ungu	1.439
		Line	Ungu	0.336
		Line	Ungu	0.747
		Line	Ungu	1.283
		Line	Ungu	0.323
		Line	Ungu	0.442
		Line	Ungu	0.330

			Line	Ungu	0.666
			Line	Ungu	1.128
			Fragmen	Ungu	0.103
		3	Fragmen	Ungu	0.159
			Fragmen	Biru	0.154
			Line	Biru	0.237
			Line	Biru	1.786
			Line	Biru	1.579
			Line	Biru	0.505
			Line	Biru	0.871
			Line	Biru	1.643
			Line	Coklat	1.251
			Line	Merah Muda	0.593
			Line	Merah Muda	1.137
			Line	Merah Muda	0.311
			Line	Merah Muda	0.287
			Line	Merah Muda	0.416
			Line	Merah Muda	0.586
			Line	Merah Muda	1.634
			Line	Merah Muda	1.011
			Line	Merah Muda	1.536
			Line	Merah Muda	0.732
			Line	Merah Muda	0.601
			Line	Merah Muda	0.628
III	1	45	Line	Merah Muda	0.240
			Line	Merah Muda	0.603
			Line	Merah Muda	0.498
			Line	Ungu	0.924
			Line	Ungu	1.191
			Line	Ungu	1.056
			Line	Ungu	1.082
			Line	Ungu	1.257
			Line	Ungu	1.328
			Line	Ungu	0.438
			Line	Ungu	2.188
			Line	Ungu	0.564
			Line	Ungu	0.804
			Line	Ungu	1.476
			Line	Ungu	0.298
			Line	Ungu	1.508
			Line	Ungu	0.597
			Line	Hijau	0.476
			Line	Hijau	0.708
			Line	Hijau	2.920

		Line	Transparan	3.192
		Line	Transparan	0.716
		Line	Transparan	0.854
		Line	Transparan	0.892
		Line	Transparan	1.024
		Line	Transparan	1.914
	2	Fragmen	Ungu	0.424
		Fragmen	Ungu	0.170
		Line	Biru	1.971
		Line	Ungu	0.348
		Line	Ungu	1.732
		Line	Ungu	2.415
		Line	Ungu	0.172
		Line	Ungu	0.779
		Line	Ungu	0.346
		Line	Ungu	0.513
2	18	Line	Ungu	0.433
		Line	Ungu	0.531
		Line	Merah Muda	0.244
		Line	Merah Muda	0.898
		Line	Merah Muda	0.470
		Line	Merah Muda	0.453
		Line	Merah Muda	0.611
		Line	Merah Muda	0.521
		Line	Merah Muda	0.686
		Line	Hijau	1.252
	1	Fragmen	Biru	0.063
		Line	Coklat	0.547
		Line	Transparan	0.858
		Line	Biru	0.137
		Line	Biru	0.614
	10	Line	Biru	0.249
3		Line	Ungu	0.389
		Line	Ungu	0.301
		Line	Ungu	0.361
		Line	Ungu	0.631
		Line	Hijau	0.386
	1	Fragmen	Biru	0.068
		Line	Merah Muda	0.262
		Line	Merah Muda	0.243
4	44	Line	Merah Muda	0.393
		Line	Merah Muda	0.615
		Line	Merah Muda	0.195
		Line	Merah Muda	3.494

Line	Merah Muda	1.565
Line	Biru	0.866
Line	Biru	0.782
Line	Biru	3.845
Line	Biru	0.327
Line	Hijau	0.676
Line	Hijau	0.452
Line	Hijau	2.336
Line	Transparan	3.578
Line	Transparan	1.042
Line	Transparan	0.788
Line	Transparan	0.953
Line	Transparan	1.963
Line	Transparan	0.836
Line	Transparan	1.193
Line	Transparan	0.420
Line	Transparan	3.349
Line	Transparan	1.475
Line	Transparan	1.752
Line	Transparan	2.191
Line	Transparan	1.090
Line	Transparan	1.424
Line	Hitam	2.292
Line	Hitam	2.135
Line	Hitam	0.868
Line	Ungu	0.692
Line	Ungu	0.954
Line	Ungu	1.521
Line	Ungu	1.672
Line	Ungu	0.546
Line	Ungu	1.105
Line	Ungu	0.861
Line	Ungu	0.340
Line	Ungu	0.349
Line	Ungu	1.235
Line	Ungu	3.439
Line	Ungu	1.769
Line	Coklat	2.104

Kelimpahan mikroplastik pada sampel lamun

Stasiun	Ulangan	Jumlah Total	Bentuk	Warna	Ukuran (mm)	Berat Kering (gr)
I	1	12	Line	Mera muda	1.220	0.18
			Line	Ungu	1.364	
			Line	Ungu	0.395	
			Line	Ungu	0.860	
			Line	Ungu	0.675	
			Line	Ungu	1.091	
			Line	Ungu	2.832	
			Line	Ungu	2.776	
			Line	Biru	1.013	
			Line	Biru	0.797	
			Line	Transparan	0.741	
			Line	Transparan	1.096	
	2	10	Line	Biru	0.315	0.25
			Line	Biru	0.598	
			Line	Biru	0.346	
			Line	Biru	0.992	
			Line	Biru	1.506	
			Line	Biru	1.162	
			Line	Biru	0.815	
			Line	Biru	1.487	
			Line	Biru	2.250	
			Line	Hitam	1.027	
	3	6	Line	Mera muda	2.643	0.45
			Line	Ungu	1.771	
			Line	Biru	1.327	
			Line	Biru	1.435	
			Line	Biru	1.684	
			Line	Biru	2.464	
			Line	Transparan	0.677	
			Line	Ungu	1.254	
	4	17	Line	Ungu	1.694	1.02
			Line	Ungu	0.770	
			Line	Ungu	5.461	
			Line	Ungu	2.002	
			Line	Biru	2.664	
			Line	Biru	1.479	
Line			Biru	0.664		
Line			Biru	0.961		
Line			Biru	0.904		
Line	Biru	1.145				
Line	Biru	1.371				
Line	Biru	1.913				

			Line	Biru	2.06	
			Line	Biru	3.392	
			Line	Biru	4.883	
			Line	Biru	2.928	
			Line	Biru	4.960	
	1	5	Line	Mera muda	0.592	1.18
			Line	Transparan	0.795	
			Line	Ungu	1.882	
			Line	Biru	0.727	
			Line	Biru	2.934	
	2	5	Line	Biru	6.714	1.52
			Line	Ungu	1.387	
			Line	Hitam	2.493	
			Line	Mera muda	0.584	
II			Line	Biru	0.512	
	3	6	Line	Biru	0.905	2.89
			Line	Biru	1.805	
			Line	Biru	2.363	
			Line	Biru	1.648	
			Line	Ungu	1.318	
			Line	Ungu	2.347	
			Line	Biru	1.102	
	4	7	Line	Biru	1.528	1.12
			Line	Biru	1.231	
			Line	Biru	2.459	
			Line	Biru	3.167	
			Line	Biru	1.838	
			Line	Biru	2.432	
	1	6	Line	Biru	3.028	0.64
			Line	Biru	6.709	
			Line	Ungu	1.060	
			Line	Transparan	0.512	
			Line	Hitam	1.003	
			Line	Biru	1.423	
			Line	Biru	0.943	
III			Line	Ungu	1.505	
	2	9	Line	Ungu	2.385	1.86
			Line	Ungu	1.215	
			Line	Ungu	1.045	
			Line	Ungu	2.588	
			Line	Ungu	2.154	
			Line	Biru	1.996	
	3	4	Line	Biru	0.656	0.9
			Line	Biru	1.523	

		Line	Biru	1.939	
		Line	Hitam	1.459	
		Line	Hitam	1.609	
		Line	Biru	0.532	
		Line	Biru	1.207	
4	9	Line	Biru	0.988	0.66
		Line	Biru	1.514	
		Line	Biru	2.113	
		Line	Biru	1.400	
		Line	Biru	2.014	

Tutupan dan tegakan padang lamun

Stasiun	Ulangan	Nilai Penutupan Lamun				Jumlah (%)	Tegakan
		Kotak					
		1	2	3	4		
I	0	21	18	25	10	74	8
	10	18	15	20	15	68	5
	20	20	18	19	21	78	9
	30	15	13	20	20	68	14
	40	14	20	10	20	64	8
	50	10	20	14	21	65	11
	60	20	12	18	9	59	9
	70	22	20	18	15	75	6
	80	12	10	15	10	47	6
	90	10	5	7	5	27	8
II	100	20	15	12	17	64	9
	0	20	10	15	21	66	8
	10	13	15	17	8	53	6
	20	14	17	16	9	56	4
	30	20	21	18	15	74	7
	40	21	15	20	16	72	12
	50	10	13	21	17	61	6
	60	16	21	12	20	69	8
	70	16	17	20	19	72	8
	80	20	19	15	21	75	11
III	90	19	12	20	15	66	9
	100	21	20	25	13	79	12
	0	18	9	13	20	60	8
	10	11	12	9	18	50	7
	20	6	12	5	9	32	5
	30	19	20	18	21	78	6
	40	18	17	16	11	62	12

50	11	15	9	12	47	8
60	17	20	13	19	69	7
70	15	18	7	19	59	9
80	5	20	18	21	64	10
90	19	17	20	16	72	11
100	20	18	24	21	83	12

Lampiran 2. Uji Regresi

➤ Hasil uji regresi antara panjang ikan dan jumlah MP

<i>Regression Statistics</i>	
Multiple R	0,503009437
R Square	0,253018494
Adjusted R Square	0,004024659
Standard Error	4,790457906
Observations	5

ANOVA

	<i>df</i>	<i>SS</i>	<i>MS</i>	<i>F</i>	<i>Significance F</i>
Regression	1	23,31941915	23,31941915	1,016163689	0,387687177
Residual	3	68,84546085	22,94848695		
Total	4	92,16488			

➤ Hasil uji regresi berat ikan dan jumlah MP

<i>Regression Statistics</i>	
Multiple R	0,829599493
R Square	0,688235319
Adjusted R Square	0,584313759
Standard Error	3,094821179
Observations	5

ANOVA

	<i>df</i>	<i>SS</i>	<i>MS</i>	<i>F</i>	<i>Significance F</i>
Regression	1	63,43112561	63,43112561	6,622642284	0,082246209
Residual	3	28,73375439	9,577918131		
Total	4	92,16488			

➤ Hasil uji regresi HSI dan jumlah MP

<i>Regression Statistics</i>	
Multiple R	0,393004516
R Square	0,154452549
Adjusted R Square	-
Standard Error	5,096723762
Observations	5

ANOVA

	<i>df</i>	<i>SS</i>	<i>MS</i>	<i>F</i>	<i>Significance F</i>
Regression	1	14,23510069	14,23510069	0,547997	0,512808412

Residual	3	77,92977931	25,9765931
Total	4	92,16488	

Lampiran 3. Dokumentasi Lapangan



Pemberangkatan menuju titik lokasi



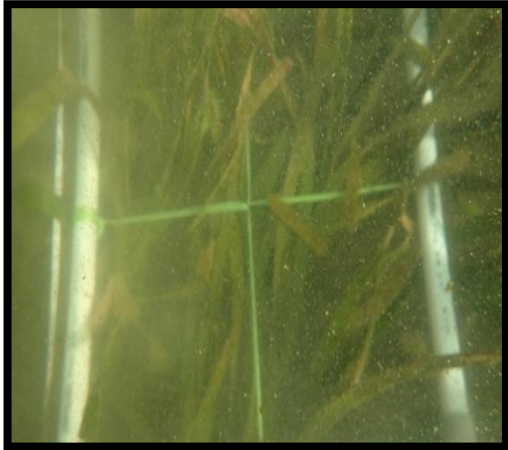
Kondisi sekitar perairan lokasi penelitian



Penangkapan ikan menggunakan jaring



Memancing ikan masuk ke dalam jaring



Tutupan lamun



Pengambilan sampel lamun



Pengambilan sampel air



Pengamatan parameter pH



Pengamatan parameter suhu



Mengukur panjang ikan

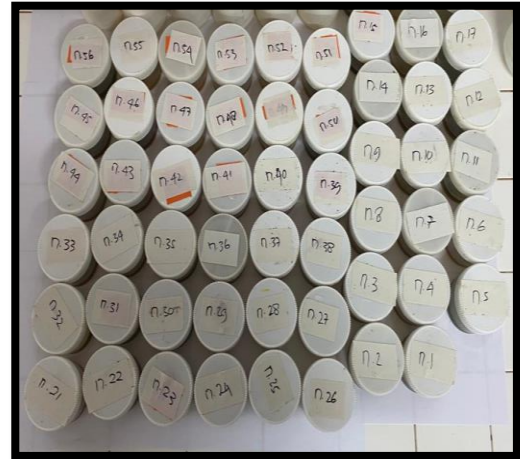


Menimbang berat ikan

Lampiran 4. Dokumentasi Laboratorium



Sampel air



Sampel usus



Pembuatan larutan KOH



Penyaringan sampel air



Pengamatan mikroplastik pada saluran cerna



Pengovenan sampel lamun



Penimbangan sampel lamun yang telah dioven



Penuangan larutan KOH pada sampel lamun