

DAFTAR PUSTAKA

- Adusumilli, P. dan Adepu, R. (2014) "Drug Related Problems : An Over View Of Various Classification Systems," 7(4), hal. 7–10.
- Ajjah, B. F. F., Mamfaluti, T. dan Putra, T. R. I. (2020) "Hubungan Pola Makan Dengan Terjadinya Gastroesophageal Reflux Disease (GERD)," *Journal of Nutrition College*, 9(3), hal. 169–179.
- Allredge, B. . *et al.* (2013) *Koda-Kimble & Young's Applied Therapeutics: The Clinical Use of Drugs 10th Edition*. Philadelphia: Wolters Kluwer Health/ Lippincott Williams & Wilkins.
- Andayani, T. M. *et al.* (2020) *Drug Related Problems: Identifikasi, Faktor Risiko, dan Pencegahannya*. Yogyakarta: Gadjah Mada University Press.
- Arisanti, F. F., Hariadini, A. L. dan Illahi, R. K. (2021) "Analisis Minimalisasi Biaya Harga Obat Antidiabetes di Beberapa Apotek Kabupaten Malang (Studi Dilakukan terhadap Obat Glibenklamid dan Metformin)". Universitas Brawijaya
- Aulton, M. . (ed.) (1988) *Pharmaceutics: The Science of Dosage Form Design*. 2nd Editio. Churchill Livingstone.
- Brayfield, A. (ed.) (2014) *Martindale: The Complete Drug Reference edisi 38*. Pharmaceutical Press.
- Cipolle, R. J., Strand, L. M. dan Morley, P. C. (2012) *Pharmaceutical Care Practice: The Patient-centered Approach to Medication Management Services*. 3rd ed. McGraw Hill.
- Dilokthornsakul, P. *et al.* (2018) *Interpreting Pharmacoeconomic Findings, Clinical Pharmacy Education, Practice and Research: Clinical Pharmacy, Drug Information, Pharmacovigilance, Pharmacoeconomics and Clinical Research*. Elsevier Inc.
- DiPiro, J. T. *et al.* (2020) *Pharmacotherapy: A Pathophysiologic Approach*. 11th ed. McGraw Hill.
- Hapsari, F. C. . *et al.* (2017) "Prevalence of Gastroesophageal Reflux Disease and Its Risk Factors in Rural Area," *The Indonesian Journal of Gastroenterology, Hepatology, and Digestive Endoscopy*, 18 Number, hal. 9–14.

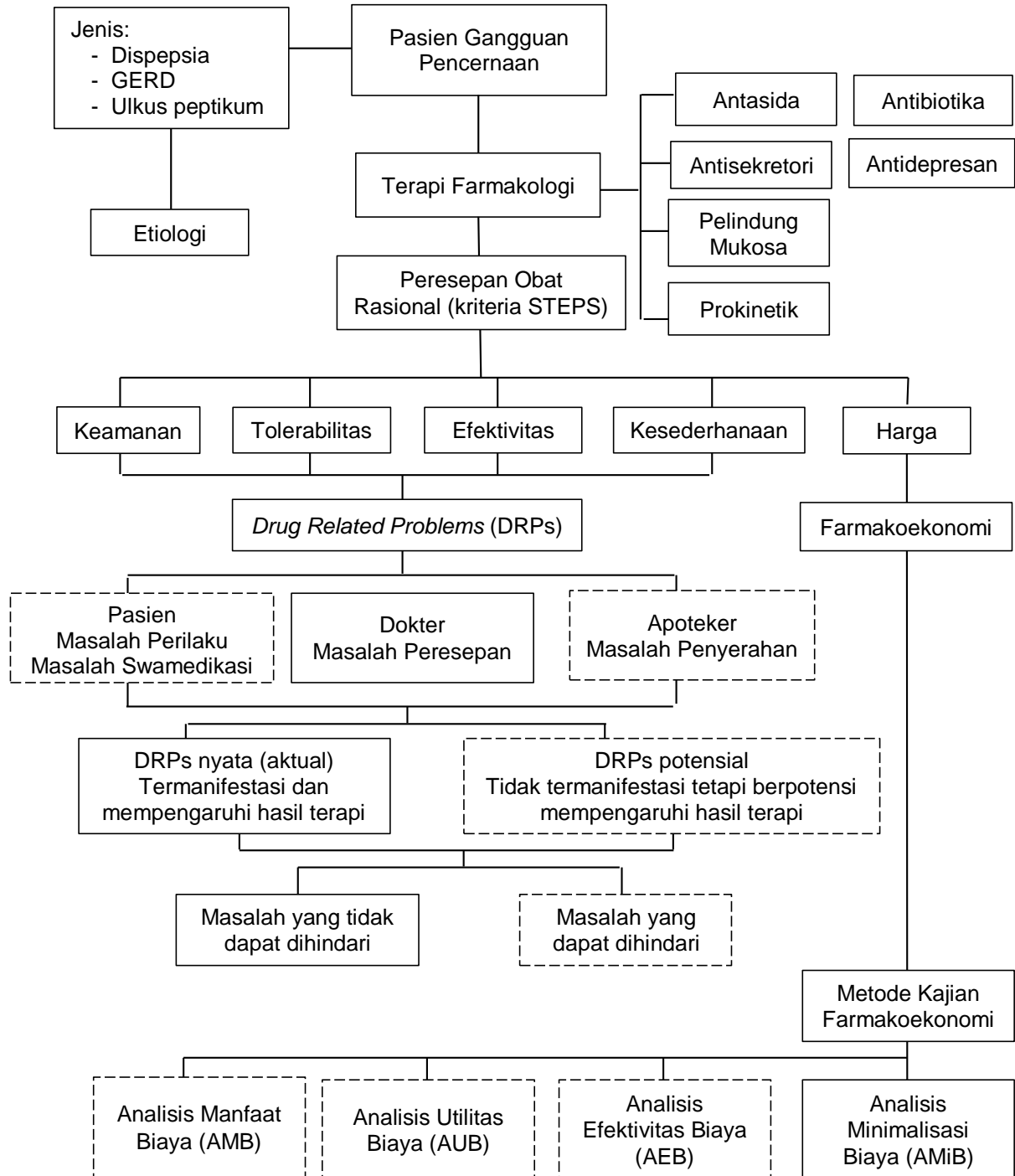
- Heidelbaugh, J. J. (2013) "Proton Pump Inhibitors and Risk of Vitamin and Mineral Deficiency: Evidence and Clinical Implications," *Therapeutic Advances in Drug Safety*, 4(3), hal. 125–133.
- Herman, H. dan Lau, S. H. A. (2020) "Faktor Risiko Kejadian Dispepsia Risk Factors for Dyspepsia Pendahuluan," 9(November), hal. 1094–1100.
- Kemenkes RI (2013) *Pedoman Penerapan Kajian Farmakoekonomi*. Jakarta: Kementerian Kesehatan RI.
- LaFleur, J. *et al.* (2006) "Prevalence of Drug-Related Problems and Cost-Savings Opportunities in Medicaid High Utilizers Identified by a Pharmacist-Run Drug Regimen Review Center," 12(8), hal. 677–685.
- Lam, J. R. *et al.* (2013) "Proton Pump Inhibitor and Histamine 2 Receptor Antagonist Use and Vitamin B 12 Deficiency," *American Medical Association*, 310(22).
- Latifah, Sauriasari, R. dan Firzawati (2017) "Role of Pharmacy on Alteration of Drug Cost and Drug-Related Problem Prevention for the National Health Insurance Geriatric Outpatient," *J Young Pharm*, 9(3), hal. 386–390.
- Lexicomp* (2022) *Online*. Tersedia pada: online-lexicomp.ezproxylocal.library.nova.edu (Diakses: 7 November 2022).
- Lim, X. *et al.* (2018) "Validation of a Drug-Related Problem Classification System for the Intermediate and Long-Term Care Setting in Singapore," *Pharmacy*, 6(4), hal. 109.
- Lu, C. *et al.* (2005) "Prevalence and Health / Social Impacts of Functional Dyspepsia in Taiwan : A study based on the Rome Criteria Questionnaire Survey assisted by endoscopic exclusion among a Physical Check-Up Population," (201), hal. 402–411.
- Martindale* (2022) *Online*. Tersedia pada: online-lexicomp.ezproxylocal.library.nova.edu (Diakses: 7 November 2022).
- Van Mil, J. W. F. *et al.* (2004) "Drug-Related Problem Classification Systems," *Annals of Pharmacotherapy*, 38(5), hal. 859–867.
- Van Mil, J. W. F. (2005) "Drug-related Problems: a Cornerstone for Pharmaceutical Care," *Journal of the Malta College of Pharmacy Practice*, 10, hal. 5–8.

- Moraes-filho, J. P. P. *et al.* (2009) "Clinical Science Comorbidities Are Frequent In Patients With Gastroesophageal Reflux Disease In A Tertiary Health Care Hospital," 64(8), hal. 785–790.
- Morrison, A. dan Wertheimer, A. I. (2002) *Pharmacoeconomics: A Primer for the Pharmaceutical Industry*. Temple University.
- Nguyen, T. H. *et al.* (2021) "Drug-Related Problems in Prescribing for Pediatric Outpatients in Vietnam," hal. 1–12.
- PCNE, C. (2020) "Classification for Drug related problems," hal. 1–10.
- Permenkes RI (2016) *Peraturan Menteri Kesehatan RI Nomor 73 Tentang Standar Pelayanan Kefarmasian di Apotek*.
- Permenkes RI (2021) "Peraturan Menteri Kesehatan RI Nomor 28 Tahun 2021 tentang Pedoman Penggunaan Antibiotik," (1996), hal. 6.
- PGI dan KSHPI (2014) *Konsensus Nasional Penatalaksanaan Dispepsia dan Infeksi Helicobacter pylori, Konsensus Nasional Penatalaksanaan Dispepsia dan Infeksi Helicobacter pylori*.
- Preston, C. L. (ed.) (2016) *Stockley's Drug Interactions*. 11th editi. London: Pharmaceutical Press. Tersedia pada:
https://archive.org/details/stockleysdrugint0000unse_u3u6/page/716/mode/2up.
- Rascati, K. L. (2014) *Essentials of Pharmacoeconomics*. 2nd Editio. Philadelphia: Wolters Kluwer Health/ Lippincott Williams & Wilkins.
- Richter, J. E. dan Rubenstein, J. H. (2018) "Presentation and Epidemiology of Gastroesophageal Reflux Disease," *Gastroenterology*. The American Gastroenterological Association, 154(2), hal. 267–276.
- Ryan, E. *et al.* (2020) *Hunter's Tropical Medicine and Emerging Infectious Disease Tenth Edition*. Tenth Edit, Elsevier Inc. Tenth Edit. Elsevier Inc.
- Saldanha, V. *et al.* (2020) "Incidence, Types and Acceptability of Pharmaceutical Interventions about Drug Related Problems in a General Hospital: an Open Prospective Cohort," hal. 1–8.
- Saputera, M. D. dan Budiarto, W. (2017) "Diagnosis dan Tatalaksana Gastroesophageal Reflux Disease (GERD) di Pusat Pelayanan Kesehatan Primer," *Journal Continuing Medical Education*, 44(5), hal. 329–332.

- Septyarani, E. (2019) "Potensi Buah Pare (*Momordhica charantia*) Sebagai Agen Pengobatan Ulkus Peptikum Hasil Dan Pembahasan," 10(2), hal. 222–225.
- Shahzad, H. *et al.* (2021) "Impact of Gastrointestinal Diseases on Health-Related Quality of Life of Patients in Pakistan," 13(8), hal. 1–7.
- Sumarsono, I. (2019) "Analisis Biaya Peresepan Obat Pada Pasien Dispepsia ; Perspektif Drug Related Problems Di Sarana Pelayanan Kefarmasian Kota Makassar". *Skripsi*. Universitas Hasanuddin
- Suri, I., Marvel, M. dan Nurmeilis, N. (2021) "Gambaran Karakteristik Pasien dan Penggunaan Obat Dispepsia di Klinik A Daerah Bekasi Timur," *Pharmaceutical and Biomedical Sciences Journal (PBSJ)*, 2(2), hal. 55–61.
- Wallander, M. *et al.* (2007) "Dyspepsia In General Practice : Incidence, Risk Factors, Comorbidity And Mortality," (August), hal. 403–411.
- Whittlesea, C. dan Hodson, K. (2019) *Clinical Pharmacy and Therapeutics*. 6th ed. Elsevier B.V.
- Xie, X. *et al.* (2022) "The Global, Regional And National Burden Of Peptic Ulcer Disease From 1990 To 2019: A Population-Based Study," *BMC Gastroenterology*. BioMed Central, 22(1), hal. 1–13.
- Zakiyah W, Agustin AE, Fauziah A, Sa'diyyah N, M. G. (2021) "Definisi, Penyebab, dan Terapi Sindrom Dispepsia.," *Health Sains*, 2(7), hal. 979.
- Zeind, C. S. dan Carvalho, M. G. (2018) *Applied Theurapeutics: The Clinical Use of Drugs 11th Edition*. Philadelphia: Wolters Kluwer Health/ Lippincott Williams & Wilkins.

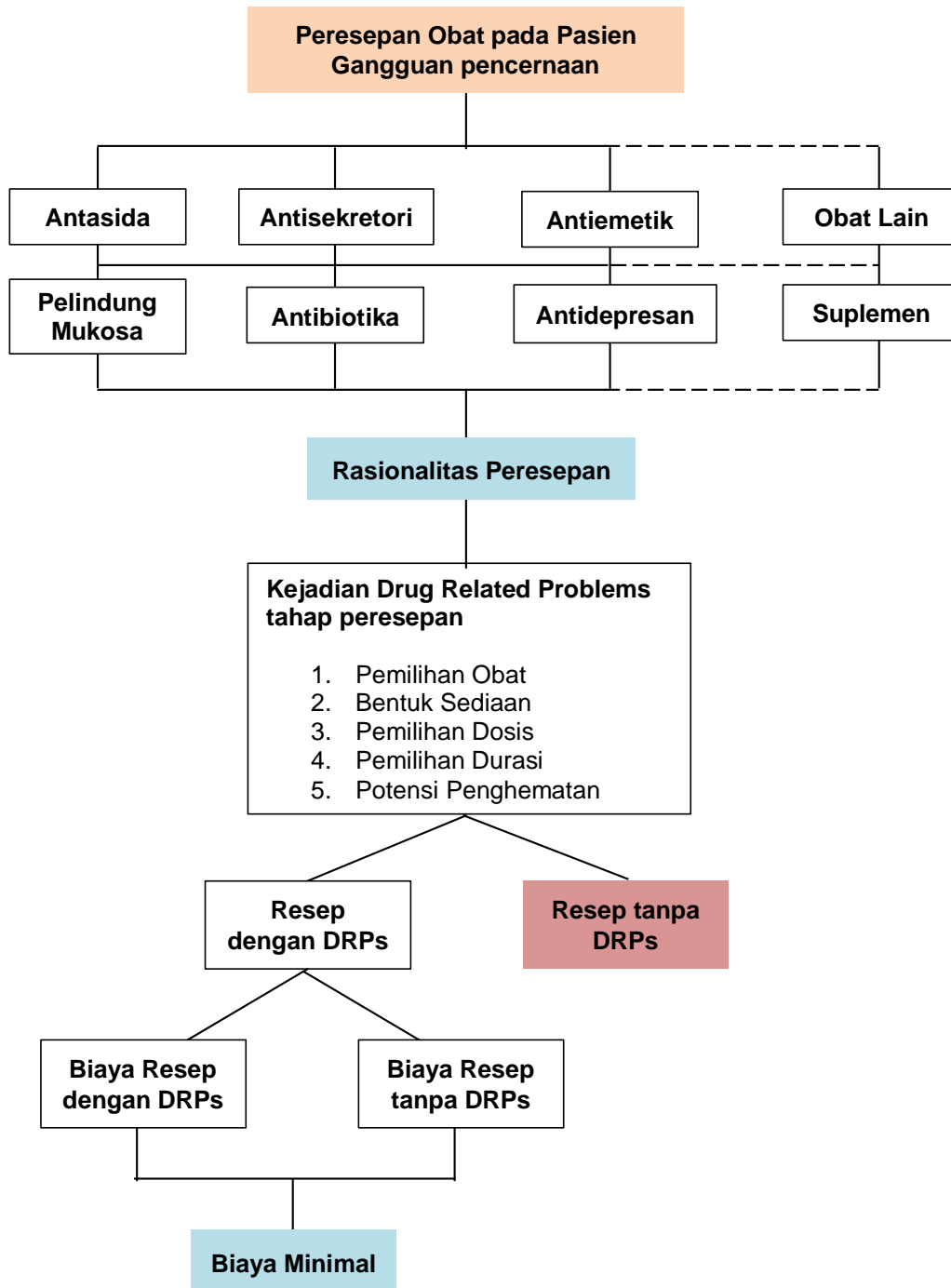
LAMPIRAN

Lampiran 1. Kerangka Teori



Sumber: Modifikasi An'Imfalahuddin (2020); PGI (2014, 2015, 2017); Whittlesea dan Hudson (2019); Mil (2005); Ditjen Farmalkes (2013)

Lampiran 2. Kerangka Konsep



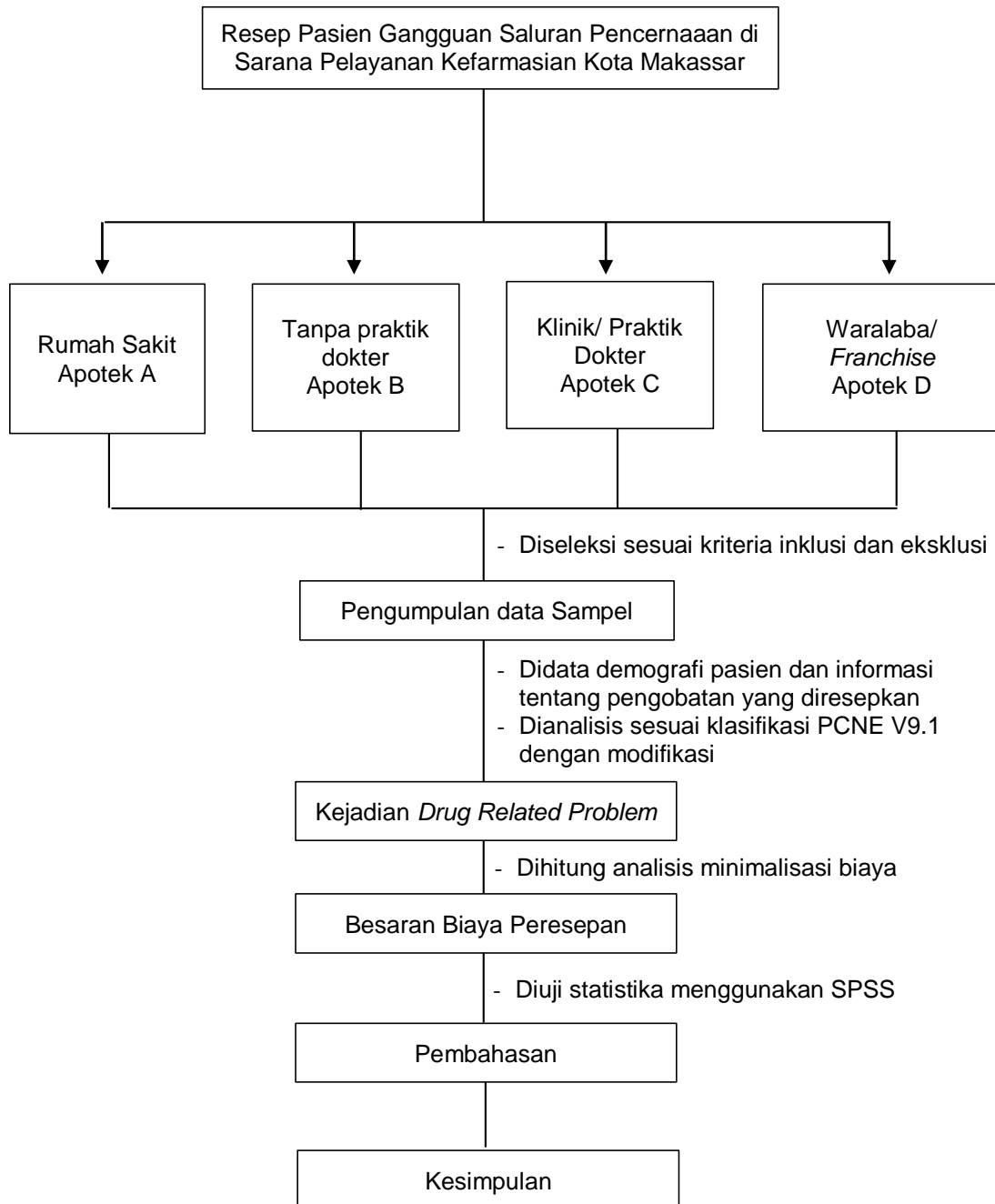
Keterangan :

■ : variabel bebas

■ : variabel terikat

■ : variabel perancu

Lampiran 3. Skema Kerja Penelitian



Lampiran 4. Tabel Perbedaan Penelitian yang Dilakukan dengan Penelitian Sebelumnya

NO	Hal yang membedakan	Latifah, dkk (2017)	Widayati, dkk (2018)	Sumarsono (2019)	Penelitian yang dilakukan
1.	Kasus	Pasien Geriatri yang memiliki asuransi kesehatan nasional	Pasien rawat inap atau rawat jalan gangguan lambung	Pasien rawat jalan Dispepsia	Pasien rawat jalan Gangguan pencernaan
2.	Target Tempat Penelitian	RS Umum di kota Depok	RSUD Samarinda	3 sarana pelayanan kefarmasian kota Makassar	4 sarana pelayanan kefarmasian kota Makassar
3.	Metode Penelitian	Observasional, retrospektif, <i>pre-post study</i>	Non eksperimental, incidental sampling	Deskriptif, <i>cross sectional</i>	Deskriptif, <i>cross sectional</i>
4.	Hal yang dianalisis	Perubahan biaya setelah pengkajian DRPs	Profil Pola Pengobatan dan DRP	Pola peresepan, identifikasi DRPs, dan analisis minimal biaya	Identifikasi DRPs dan analisis minimal biaya

Lampiran 5. Hasil Uji Statistik dengan SPSS

Descriptive Statistics

	N	Mean	Std. Deviation	Minimum	Maximum
Biaya Resep DRPs	259	149643.6461	161106.24695	3997.80	1121889.00
Biaya Resep Sepatutnya	259	47045.8408	56168.91791	.00	473476.50

One-Sample Kolmogorov-Smirnov Test

		Biaya Resep DRPs	Biaya Resep Sepatutnya
N		259	259
Normal Parameters ^{a,b}	Mean	149643.6461	47045.8408
	Std. Deviation	161106.24695	56168.91791
Most Extreme Differences	Absolute	.193	.272
	Positive	.193	.272
	Negative	-.183	-.212
Test Statistic		.193	.272
Asymp. Sig. (2-tailed)		.000 ^c	.000 ^c

a. Test distribution is Normal.

b. Calculated from data.

c. Lilliefors Significance Correction.

Wilcoxon Signed Ranks Test

Ranks

		N	Mean Rank	Sum of Ranks
Biaya Resep Sepatutnya - Biaya Resep DRPs	Negative Ranks	195 ^a	104.30	20338.00
	Positive Ranks	7 ^b	23.57	165.00
	Ties	57 ^c		
	Total	259		

a. Biaya Resep Sepatutnya < Biaya Resep DRPs

b. Biaya Resep Sepatutnya > Biaya Resep DRPs

c. Biaya Resep Sepatutnya = Biaya Resep DRPs

Test Statistics^a

	Biaya Resep Sepatutnya - Biaya Resep DRPs
Z	-12.127 ^b
Asymp. Sig. (2-tailed)	.000

a. Wilcoxon Signed Ranks Test

b. Based on positive ranks.