

DAFTAR PUSTAKA

- Adeyeye, T.C. 2015. Manpower Development and Economic Growth in Nigeria. *Journal of Economics and Sustainable Development*, Vol. 6, No.9, 2015
- Ali, Mowadat. 2015. Effect of Gender Inequality on Economic Growth (Case Of Pakistan). *Journal of Economic and Sustainable Development*, Vol. 6, No. 9, 132
- Akbulaev, Nurkhodza and Aliyeva, Basti. 2020. Gender and economic growth: Is there a correlation? The example of Kyrgyzstan. *Cogent economics and finance*, 8:1. 1768007.
- Arifin, Samsul. 2018. *Kesetaraan Gender dan Pertumbuhan Ekonomi di Indonesia*, kajian vol.23 No. 1 Maret 2018. 27-41.
- Arsyad, Lincolin. 2010. *Ekonomi Pembangunan, Edisi Keempat*. Yogyakarta: STIE-YKPN
- Ata Can Bertay, Ljubica Dordevic, and Can Sever, 2020. *Gender Inequality and Economic Growth: Evidence from Industry-Level Data*, IMF Working Paper 20/119. Washington: International Monetary Fund.
- Aydin, Fatma Fehime, and Ekrem Erdem. 2014. The Effect of Women's Employment on Competitiveness and Economic Growth. Vol 44 2014 No 59-71.
- Bank Indonesia 2018; Laporan Nusantara vol.13 no.04. Jakarta. Departemen kebijakan ekonomi dan moneter.
- Badan Pusat Statistik. 2021. Indeks Pembangunan Manusia 2021. Jakarta: BPS.
- Badan Pusat Statistik. 2014-2021. Keadaan Angkatan Kerja Indonesia. Jakarta: BPS.
- Barro, Robert and Jong-Wha Lee. 1994. "Sources of Economic Growth." Carnegie Rochester Conference Series on Public Policy 40: 1-46.
- Barro, Robert and Xavier Sala-i-Martin. 1995. *Economic Growth*. New York: McGraw- Hill.
- Blumberg, R. (2005). *Women's Economic Empowerment as th "Magic Portion" of Development*. *American Sociological Association*
- Dollar, D., and R. Gatti, 1999. "Gender Inequality, Income, and Growth: Are Good Times Good for Women?" World Bank Gender and Development Working Paper No. 1. Washington: World Bank.

- Duflo, Esther., 2012, “*Women empowerment and economic development*,” Journal of Economic Literature, 50(4)
- EIGE (European Institute for Gender Equality). Economics Benefit Of Gender Equality in thr European Union
- Fakih, Mansour. 2012. *Analisis Gender dan Transformasi Sosial*. Yogyakarta: Pustaka Pelajar.
- Fernández, Raquel., Isakova, Asel., Francesco Luna, dan Barbara Rambousek, 2021. “*Gender Equality and Inclusive Growth*,” IMF Working Paper 21/59. Washington: International Monetary Fund.
- Firdaus, M. 2018. *Aplikasi Ekonometrika untuk Data Panel dan Time Series*. Bogor: IPB Press.
- Ghozali, I. 2016. *Analisis Multivariat dan Ekonometrika: Teori, Konsep, dan Aplikasi dengan Eviews 8*. Semarang: Badan Penerbit UNDIP (UNDIP Press).
- Haq, Mahbub ul. 1995. *Reflections on Human Development*. New York: Oxford University Press.
- Hidayah, M Zulfa. Menelusur Relasi Indikator Indeks Pembangunan Gender terhadap Pertumbuhan Ekonomi 2020. Journal of Economics, Social, and Development Vol.7 No. 1 Ed. Juni 2020
- Kementerian Pemberdayaan Perempuan dan Perlindungan Anak. (2016). *Pembangunan Manusia Berbasis Gender 2016*, Jakarta: CV. Lintas Khatulistiwa.
- Kementrian Pemberdayaan Perempuan dan Perlindungan Anak. *Profil Perempuan Indonesia 2019*; KPPA
- Klasen, S., and F. Lamanna, 2009. “*The Impact of Gender Inequality in Education and Employment on Economic Growth: New Evidence for a Panel of Countries*.” *Feminist Economics*, 15(3), 91-132.
- Kurniawati, Endah. 2021. *Pengaruh Struktur Umur Penduduk terhadap Pertumbuhan Ekonomi Di Indonesia*. Jurnal Ekonomi dan Pembangunan Indonesia Vol 21 No.1 Januari 2021
- Lagerlöf, Nils.-Petter. 2003. *Gender Equality and Long-Run Growth*. Journal of Economic Growth, 8(4), 403–26.
- Mirah, Rine M., Paulus Kindangen. 2020. *Pengaruh Tingkat Partisipasi Angkatan Kerja Terhadap Pertumbuhan Ekonomi dan Kemiskinan di Provinsi*

- Sulawesi Utara*. Jurnal Pembangunan Ekonomid dan Keuangan Daerah, Vol. 21 No. 1 2020.
- Mitra A., Bang J.T., and Biswas A. (2015) "Gender Equality and Economic Growth: Is it Equality of Opportunity or Equality of Outcomes?", *Feminist Economics* 21(1): 110-135.
- Moser, Carolina O.N. 1993. *Gender planning and Development Theory, Practice and Training*. London : Routletge
- Mosse, Julia Cleves. 2007. *Gender dan Pembangunan*. Pustaka Pelajar, Jakarta.
- Muqorobbin, Moh. 2017. Pengaruh Indeks Pembangunan Manusia (IPM) terhadap Pertumbuhan Ekonomi di Provinsi Jawa Timur. *Jurnal Pendidikan Ekonomi*. Vol .5 No. 3
- Nabiel, Muhammad. 2021. The Effect Of Gender Equality On Economic Growth In West Sumatera 2017-2020. *Journal of Gender Studies*-Vol.05, No. 02, July 2021.
- Nafziger, E Wayne. 2006. *Economic Development, fourth edition*, Cambridge; Cambridge University Press.
- Romer, David. 2012. *Advanced Macroeconomics, Fifth Edition*. University of California, Berkeley: The McGraw-Hill.
- Saefurrahman, G U., Tulus., Ronia. 2018. Pengaruh Penyerapan Tenaga kerja terhadap Pertumbuhan Ekonomi pada Sektor Industri Pengolahan. *Islamic Economic Journal* Volume 1, No 1 Page : 1 – 18.
- Seguino, Stephanie. 2008. *Micro-macro linkages between gender, development, and growth: Implications for the Carribbean region*. *Journal of Eastern Carribbean Studies*. 33(4): 8–42.
- Sen, A. (1987). *Commodities and Capabilities*. New Delhi, Oxford University Press.
- Todaro, M. P. dan Smith, S. C. 2011. *Economic Development (11th edition)*. United State of America: Pearson.
- UNDP (United Nations Development Programme). 2015. *Human Development Report 2015: Work for Human Development*. New York.

LAMPIRAN

Lampiran 1 Hasil Uji Statistik

Hasil Regresi Fixed Effect Model

Dependent Variable: Y?
 Method: Pooled Least Squares
 Date: 10/16/22 Time: 20:57
 Sample: 1 8
 Included observations: 8
 Cross-sections included: 17
 Total pool (balanced) observations: 136

Variable	Coefficient	Std. Error	t-Statistic	Prob.
C	6.932426	47.04228	0.147366	0.8831
X1?	-0.658538	0.190257	-3.461311	0.0008
X2?	0.294910	0.131872	2.236340	0.0273
X3?	-0.344494	0.503864	-0.683705	0.4955
X4?	0.632378	0.261445	2.418783	0.0171
Fixed Effects (Cross)				
GORONTALO--C	0.563456			
KALBAR--C	-1.481114			
KALSEL--C	-1.048356			
KALTARA--C	0.969891			
KALTENG--C	0.721364			
KALTIM--C	-1.442284			
MALUKU--C	0.634976			
MALUT--C	4.141267			
NTB--C	-2.850916			
NTT--C	-4.567212			
PABAR--C	0.172594			
PAPUA--C	-3.866253			
SULBAR--C	-2.861899			
SULSEL--C	1.298343			
SULTENG--C	5.495729			
SULTENGGARA--C	1.488087			
SULUT--C	2.632326			

Effects Specification

Cross-section fixed (dummy variables)

R-squared	0.296559	Mean dependent var	4.922647
Adjusted R-squared	0.174222	S.D. dependent var	4.224749
S.E. of regression	3.839128	Akaike info criterion	5.669469
Sum squared resid	1694.974	Schwarz criterion	6.119217
Log likelihood	-364.5239	Hannan-Quinn criter.	5.852235
F-statistic	2.424108	Durbin-Watson stat	2.025605
Prob(F-statistic)	0.001766		

Hasil Uji Chow

Redundant Fixed Effects Tests
Pool: CEM
Test cross-section fixed effects

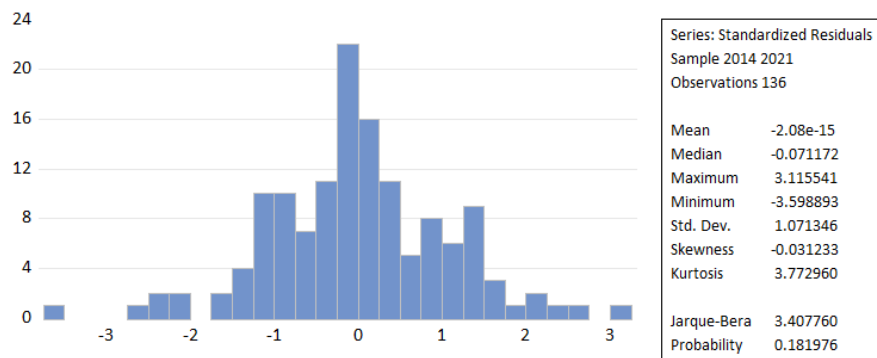
Effects Test	Statistic	d.f.	Prob.
Cross-section F	2.150447	(16,115)	0.0104
Cross-section Chi-square	35.597045	16	0.0033

Hasil Uji Hausman

Correlated Random Effects - Hausman Test
Pool: CEM
Test cross-section random effects

Test Summary	Chi-Sq. Statistic	Chi-Sq. d.f.	Prob.
Cross-section random	17.620223	4	0.0015

Hasil Uji Normalitas



Hasil Uji Multikolinearitas

	X1	X2	X3	X4
X1	1.000000	0.649429	-0.308590	-0.255268
X2	0.649429	1.000000	-0.066419	-0.212635
X3	-0.308590	-0.066419	1.000000	0.657738
X4	-0.255268	-0.212635	0.657738	1.000000

Hasil Uji Heteroskedastis

Dependent Variable: RESABS
 Method: Panel Least Squares
 Date: 10/16/22 Time: 20:52
 Sample: 2014 2021
 Periods included: 8
 Cross-sections included: 17
 Total panel (balanced) observations: 136

Variable	Coefficient	Std. Error	t-Statistic	Prob.
C	51.80948	31.78612	1.629940	0.1059
X1	0.229584	0.128555	1.785882	0.0768
X2	0.038720	0.089105	0.434541	0.6647
X3	-0.741377	0.340457	-2.177591	0.0515
X4	0.020292	0.176656	0.114864	0.9088

Effects Specification

Cross-section fixed (dummy variables)

R-squared	0.270877	Mean dependent var	2.158463
Adjusted R-squared	0.144073	S.D. dependent var	2.803907
S.E. of regression	2.594071	Akaike info criterion	4.885435
Sum squared resid	773.8584	Schwarz criterion	5.335183
Log likelihood	-311.2096	Hannan-Quinn criter.	5.068201
F-statistic	2.136189	Durbin-Watson stat	2.813449
Prob(F-statistic)	0.006561		

Lampiran 2 Tabulasi Data Variabel

Provinsi	Tahun	Pertumbuhan Ekonomi	IPM Laki-laki	IPM Perempuan	Penyerapan TK Laki-laki	Penyerapan TK Perempuan
NTB	2014	5.17	69.00	62.11	93.59	95.15
NTB	2015	21.76	69.71	62.90	93.27	95.76
NTB	2016	5.81	70.33	63.33	95.45	96.8
NTB	2017	0.09	70.93	64.09	96.23	97.29
NTB	2018	-4.50	71.68	64.78	95.97	96.69
NTB	2019	3.90	72.58	65.61	96.59	96.56
NTB	2020	-0.62	72.69	65.75	95.03	96.78
NTB	2021	2.30	73.07	62.26	96.44	97.72
NTT	2014	5.05	66.19	62.92	96.77	96.70
NTT	2015	4.92	66.59	62.97	96.81	95.32
NTT	2016	5.12	67.05	63.22	97.12	96.27
NTT	2017	5.11	67.70	64.29	96.59	96.9
NTT	2018	5.11	68.36	64.89	96.93	97.07
NTT	2019	5.25	69.20	64.16	96.88	96.36
NTT	2020	-0.84	69.16	64.13	95.41	95.01
NTT	2021	2.51	69.33	64.22	96.29	96.26
KALBAR	2014	5.03	70.45	59.68	95.96	95.96
KALBAR	2015	4.88	70.63	60.46	94.38	95.6
KALBAR	2016	5.20	70.85	60.77	95.57	96.1
KALBAR	2017	5.17	71.14	61.38	95.56	95.75
KALBAR	2018	5.07	71.78	66.15	95.87	95.52
KALBAR	2019	5.09	72.48	61.40	95.17	96.18
KALBAR	2020	-1.82	72.49	60.07	93.83	94.78
KALBAR	2021	4.78	72.71	62.17	93.80	94.79
KALTENG	2014	6.21	71.96	62.58	96.75	96.76
KALTENG	2015	7.01	72.70	63.28	95.72	94.99
KALTENG	2016	6.35	73.31	65.30	95.14	94.24
KALTENG	2017	6.73	73.94	65.74	96.44	94.51
KALTENG	2018	5.61	74.49	66.39	96.59	94.08
KALTENG	2019	6.12	75.06	66.87	96.33	95.1
KALTENG	2020	-1.41	75.20	66.95	95.53	92.21
KALTENG	2021	3.40	75.53	67.06	95.60	95.24

KALSEL	2014	4.84	72.20	63.87	96.06	96.44
KALSEL	2015	3.82	73.07	63.70	95.07	90.1
KALSEL	2016	4.40	73.55	65.36	94.99	93.88
KALSEL	2017	5.28	74.22	65.76	94.76	95.96
KALSEL	2018	5.08	74.77	66.25	95.02	96.25
KALSEL	2019	4.09	75.39	66.80	95.17	96.51
KALSEL	2020	-1.82	75.42	67.02	94.87	94.05
KALSEL	2021	3.48	75.03	67.71	94.71	95.56
KALTIM	2014	1.71	75.62	68.48	93.29	92.13
KALTIM	2015	-1.20	75.87	68.66	93.14	89.93
KALTIM	2016	-0.38	76.07	68.98	91.66	88.82
KALTIM	2017	3.13	68.36	58.17	93.32	92.59
KALTIM	2018	2.64	68.65	58.95	93.73	92.73
KALTIM	2019	4.70	81.58	70.14	93.80	94.12
KALTIM	2020	-2.87	81.32	69.69	92.75	93.83
KALTIM	2021	2.48	81.86	70.36	92.78	93.87
KALTARA	2014	8.18	73.54	63.00	93.66	93.12
KALTARA	2015	3.40	73.84	63.27	94.69	93.44
KALTARA	2016	3.55	73.92	63.82	94.58	95.24
KALTARA	2017	6.80	74.62	64.14	95.13	93.11
KALTARA	2018	5.36	75.27	65.29	94.75	94.86
KALTARA	2019	6.89	75.82	65.96	96.28	94.14
KALTARA	2020	-1.09	75.41	65.36	94.91	95.27
KALTARA	2021	3.98	75.83	66.20	95.57	95.13
SULUT	2014	6.31	73.19	69.23	93.97	89.29
SULUT	2015	6.12	73.70	69.75	92.87	86.98
SULUT	2016	6.16	74.18	70.50	96.09	89.8
SULUT	2017	6.31	74.86	70.95	94.04	90.42
SULUT	2018	6.00	75.40	71.47	94.12	90.34
SULUT	2019	5.65	76.36	72.18	94.87	91.64
SULUT	2020	-0.99	76.34	62.77	92.95	92.05
SULUT	2021	4.16	76.65	59.12	93.43	92.05
SULTENG	2014	5.07	69.66	60.00	96.87	94.32
SULTENG	2015	15.50	70.32	60.46	96.59	96.64
SULTENG	2016	9.94	71.09	61.01	97.67	95.19
SULTENG	2017	7.10	71.74	61.98	97.09	94.61

SULTENG	2018	20.60	72.46	66.72	96.94	95.98
SULTENG	2019	8.83	73.19	67.34	97.46	90.8
SULTENG	2020	4.86	73.31	67.35	96.09	93.47
SULTENG	2021	11.70	73.54	67.59	96.25	96.26
SULSEL	2014	7.54	72.59	67.22	95.74	93.59
SULSEL	2015	7.19	72.98	67.81	94.43	93.42
SULSEL	2016	7.42	73.61	68.30	95.64	94.52
SULSEL	2017	7.21	74.21	68.90	95.02	93.34
SULSEL	2018	7.04	74.64	69.53	94.71	94.57
SULSEL	2019	6.91	75.42	70.21	95.11	94.9
SULSEL	2020	-0.71	75.90	70.48	93.32	90.26
SULSEL	2021	4.65	76.21	70.76	94.29	91.27
SULTENGGARA	2014	6.26	72.91	65.30	95.89	95.07
SULTENGGARA	2015	6.88	73.14	66.04	95.73	92.51
SULTENGGARA	2016	6.51	73.70	66.50	97.19	97.41
SULTENGGARA	2017	6.76	74.25	67.00	97.34	95.74
SULTENGGARA	2018	6.40	75.79	67.35	97.21	96.04
SULTENGGARA	2019	6.50	78.99	66.94	96.52	96.25
SULTENGGARA	2020	-0.65	79.24	67.41	95.49	95.32
SULTENGGARA	2021	4.10	79.46	68.02	95.96	96.26
GORONTALO	2014	7.27	80.03	68.52	96.11	95.28
GORONTALO	2015	6.22	80.82	69.21	96.01	94.18
GORONTALO	2016	6.52	69.09	59.50	97.80	94.38
GORONTALO	2017	6.73	69.71	60.40	96.26	95.76
GORONTALO	2018	6.49	70.52	61.09	96.76	94.69
GORONTALO	2019	6.40	71.29	61.90	96.68	95.57
GORONTALO	2020	-0.02	71.52	62.03	95.47	94.14
GORONTALO	2021	2.41	71.74	72.08	96.95	97.06
SULBAR	2014	8.86	66.29	72.52	98.84	94.57
SULBAR	2015	7.31	67.02	64.57	97.76	94.93
SULBAR	2016	6.01	67.67	64.87	97.19	93.86
SULBAR	2017	6.39	68.21	65.34	97.08	96.3
SULBAR	2018	6.26	68.83	65.76	97.26	96.19
SULBAR	2019	5.56	69.74	62.60	97.31	96.03
SULBAR	2020	-2.40	70.21	62.79	96.69	95.65
SULBAR	2021	2.56	70.40	63.06	96.66	97.2

MALUKU	2014	6.64	70.41	65.16	90.80	87.31
MALUKU	2015	5.48	70.80	65.52	91.82	87.09
MALUKU	2016	5.73	71.35	65.91	92.93	89.99
MALUKU	2017	5.82	71.82	66.61	91.53	90.36
MALUKU	2018	5.91	72.33	67.29	93.91	90.92
MALUKU	2019	5.41	72.94	66.21	93.67	91.77
MALUKU	2020	-0.92	73.01	65.99	91.98	88.09
MALUKU	2021	3.04	73.15	66.31	92.95	93.25
MALUT	2014	5.49	70.41	56.57	95.61	90.07
MALUT	2015	6.10	71.34	57.16	95.11	91.87
MALUT	2016	5.77	71.97	64.16	97.00	91.2
MALUT	2017	7.67	72.45	64.59	95.80	92.63
MALUT	2018	7.86	72.94	65.28	96.24	93.53
MALUT	2019	6.25	73.89	67.86	95.92	93.47
MALUT	2020	5.35	73.69	67.88	94.81	92.92
MALUT	2021	16.40	73.88	68.17	96.00	94.03
PABAR	2014	5.38	69.03	62.52	95.29	94.45
PABAR	2015	4.15	69.71	63.40	93.29	89.58
PABAR	2016	4.52	70.04	57.67	92.88	90.89
PABAR	2017	4.02	70.69	58.26	93.45	90.6
PABAR	2018	6.25	71.54	59.00	93.11	94.73
PABAR	2019	2.66	72.47	59.96	94.42	92.61
PABAR	2020	-0.76	72.79	55.24	92.60	90.17
PABAR	2021	-0.51	72.92	53.43	93.92	89.54
PAPUA	2014	3.65	62.31	48.96	96.44	96.72
PAPUA	2015	7.35	63.10	49.54	95.76	96.37
PAPUA	2016	9.14	63.74	50.41	96.36	97.08
PAPUA	2017	4.64	64.55	60.35	96.07	96.83
PAPUA	2018	7.32	65.45	60.52	96.54	97.17
PAPUA	2019	-15.74	66.38	53.14	96.33	96.39
PAPUA	2020	2.39	65.99	49.54	95.21	96.44
PAPUA	2021	15.11	66.07	52.96	96.25	97.26

Lampiran 3 Biodata Peneliti

Identitas Diri

Nama : Nurul Muthmainna Yusuf
 Tempat, Tanggal Lahir : Maros, 19 Juli 1999
 Jenis Kelamin : Perempuan
 Alamat Rumah : Komp. Pasar Batangase, Kab. Maros
 Nomor Handphone : 081241598380
 Alamat E-mail : nurulmuthmainnayusuf@gmail.com



Riwayat pendidikan

- Pendidikan Formal
 1. SDN 06 Inpres Bontoa (2005-2011)
 2. SMPN 05 Mandai (2011-2014)
 3. SMAN 08 Maros (2014-2017)
 4. FEB-Universitas Hasanuddin (2018-sekarang)

- Pendidikan non formal
 1. Data analyst MyEduSolve Studi Independen Kampus Merdeka batch 03 tahun 2022
 2. GenBI Leadership Camp (2020-2021)
 3. Latihan Kepemimpinan Tk 1 Himajie/ Economics Leadership Training Himpunan Mahasiswa Jurusan Ilmu Ekonomi FEB UH (2019)
 4. Basic Analysis Camp HPPMI Maros Kom. Unhas-PNUP (2019)
 5. Basic Training Hml Kom Isipol Unhas (2019)
 6. Student Leadership Forum (SLF) Unhas Batch 1-4 (2018-2019)
 7. Learning Skill, Character & Creativity (BALANCE) Universitas Hasanuddin (2018)
 8. Pengaderan Awal Tingkat Senat FEB-UH (2018)
 9. Pengaderan Awal Tingkat Ormaju Ilmu Ekonomi FEB-UH (2018)

Pengalaman Organisasi

1. Anggota Deputi Pendidikan Generasi Baru Indonesia (GenBI) 2020-2022
2. Anggota Deputi Pendidikan Generasi Baru Indonesia Universitas Hasanuddin (GenBI Unhas) 2020-2022

3. Kepala Bidang Dana dan Usaha HPPMI Maros Kom. Unhas-PNUP Periode 2020-2021
4. Staff Bidang Media dan Humas KSEI FoSEI Unhas 2019-2021
5. Pengurus Bidang Keperempuanan Hml Kom. Ekonomi Unhas 2020-2021
6. Pengurus Bidang Internal KOHATI Ekonomi Unhas 2020-2021
7. Pengurus Senat Mahasiswa FEB UH 2021
8. Himpunan Mahasiswa Jurusan Ilmu Ekonomi (HIMAJIE) universitas Hasanuddin

Pengalaman Magang

1. Bank Indonesia Kantor Perwakilan Sulawesi Selatan
Internship Program; Arsip Implementasi ISO 15489:2016 Record Management (Agustus 2021)
2. Bank Rakyat Indonesia (BRI) Regional Office Makassar
Program Magang Mahasiswa Bersertifikat (PMMB-BUMN) forum Human Capital Indonesia & Brilian Internship Program (BIP); Credit Operational Departement (September 2021-Maret 2022)

Prestasi Non Akademik

1. Penerima Dana Hibah Program Mahasiswa Wirausaha (PMW) Universitas Hasanuddin Tahun 2020