

DAFTAR PUSTAKA

Brand, N., Butt, C., & Elias, M. (1998). EXPLORATION MODEL: The Cause shear-controlled Ni-oxide and associated Mn-Co--Ni deposit, Western Australia. *AGSO Journal of Australian Geology & Geophysics*, 81-88.

Cressie, N., 1990, *The Origins of Kriging, Mathematical Geology*

Cressie, N. A. C., 1991 *Gambar 3. statistik s For Spatial Data. New York: John Wiley and Sons, Inc.*

David M., 1977: *Geostatistical Ore Reserve Estimation*, Elsevier, Amsterdam, pp. 36
Gambar 4.

Golightly, J. P. (2010). Progress in Understanding the Evolution of Nickel Laterites. *Society of Economic Geologists*, 000-000.

Ilyas, A., Koike, K., 2012. *Geostatistical modeling of ore grade distribution from geomorphic characterization in a laterite nickel deposit. Nat. Resour. Res.* 21 (2), 177–191.

Isaaks, E. H. and Srivastava, R. M., 1989. *Applied Geostatistics*. New York: Oxford University Press. P.143

Joseph Haffty, L., 1977. *A Manual on Fire Assaying and Determination of the Nobel Metals in Geological Materials*. Washington: Geological Survey.

Journel, G.A. & Hujibregts, J., 1978: *Mining Geostatistic*, Academic Press, London.

KCMI, 2017. *Kode Pelaporan Hasil Eksplorasi, Sumberdaya Mineral dan Cadangan Bijih*, Jakarta. Hal. 10-16

Kleijnen, J.P. and Van Beers, W.C., 2004, Application-Driven Sequential Designs for Simulation Experiments: Kriging Metamodelling, *Journal of the Operational Research Society*

G., 1951. A *statistik* al Approach to Some Basic Mine Valuation Problems on the Witwatersrand. *J. Chem. Metall.* Vol. 52

A., 1999. *Geostatistics for Engineers and Earth Scientists*. United States of America: Kluwer Academic Publishers.



- Royle, A. G., Newton, M.J., and Sarin, V. K., 1972. Geostatistical Factors in Design Of Mine Sampling Programmes. Transaction of the I.M.M. Section A. Vol. 81
- Srivastava, R. M. (2005). Probabilistic modeling of ore lens geometry: An alternative to deterministic wireframes. *Mathematical Geology*, 37(5), 513–544
- Micromine, 2014. Gambar 4. Micromine version (15.0). In: Micromine, ed. *Geostatistics and Kriging*. Perth: 2014, p. 24, 25, 37
- Valeton, J., M, B., Eche, R., & Rosenberg, F. (1987). Genesis Of Nickel Laterites And Bauxites In Greece During The Jurassic And Cretaceous, And Their Relation To Ultrabasic Parent Rocks. *Ore Geology Review*, 359-400. Gambar 4.



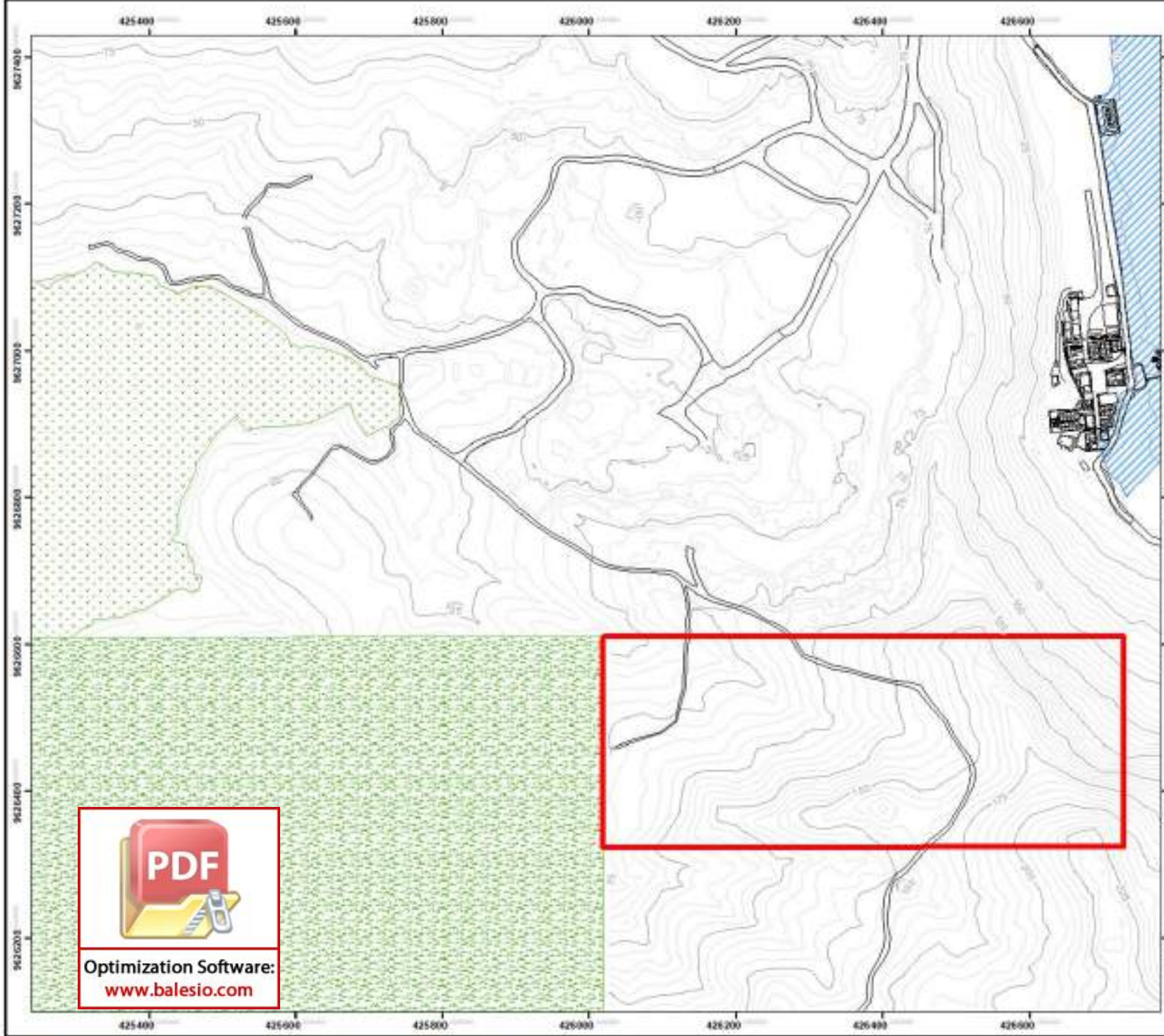
LAMPIRAN



LAMPIRAN A.

PETA TUNJUK LOKASI



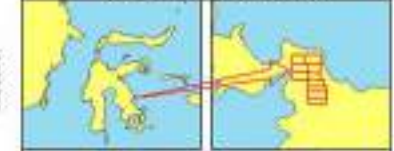


Notes:
 Universal Transverse Mercator Projection Zone 51S
 Datum: UTM WGS 84

LEGENDA:

	Indeks Kontur		Rawa
	Kontur		Laut
	Bancamp		Vegetasi
	Jalan Hauling		
	Lokasi Penelitian		

PETA TUNJUK LOKASI



Peta Lokasi Penelitian

 **PT. SENAR JAYA SULTRA UTAMA**
 WATUKAMBANA, LINDO KEMUNING
 KOTAWE UTARA, SULAWESI TENGGARA

DIGAMBAR OLEH:
 HALENTAR RANGGA S

DIPERIKSA OLEH:
 Arnan Djaya, ST.MT.Pd.D

SKALA
 1 : 5.000

Gambar Orignal:
 A3

 **DEPARTEMEN TEKNIK PERTAMBANGAN**
FAKULTAS TEKNIK
UNIVERSITAS HUSANI JEDDAH

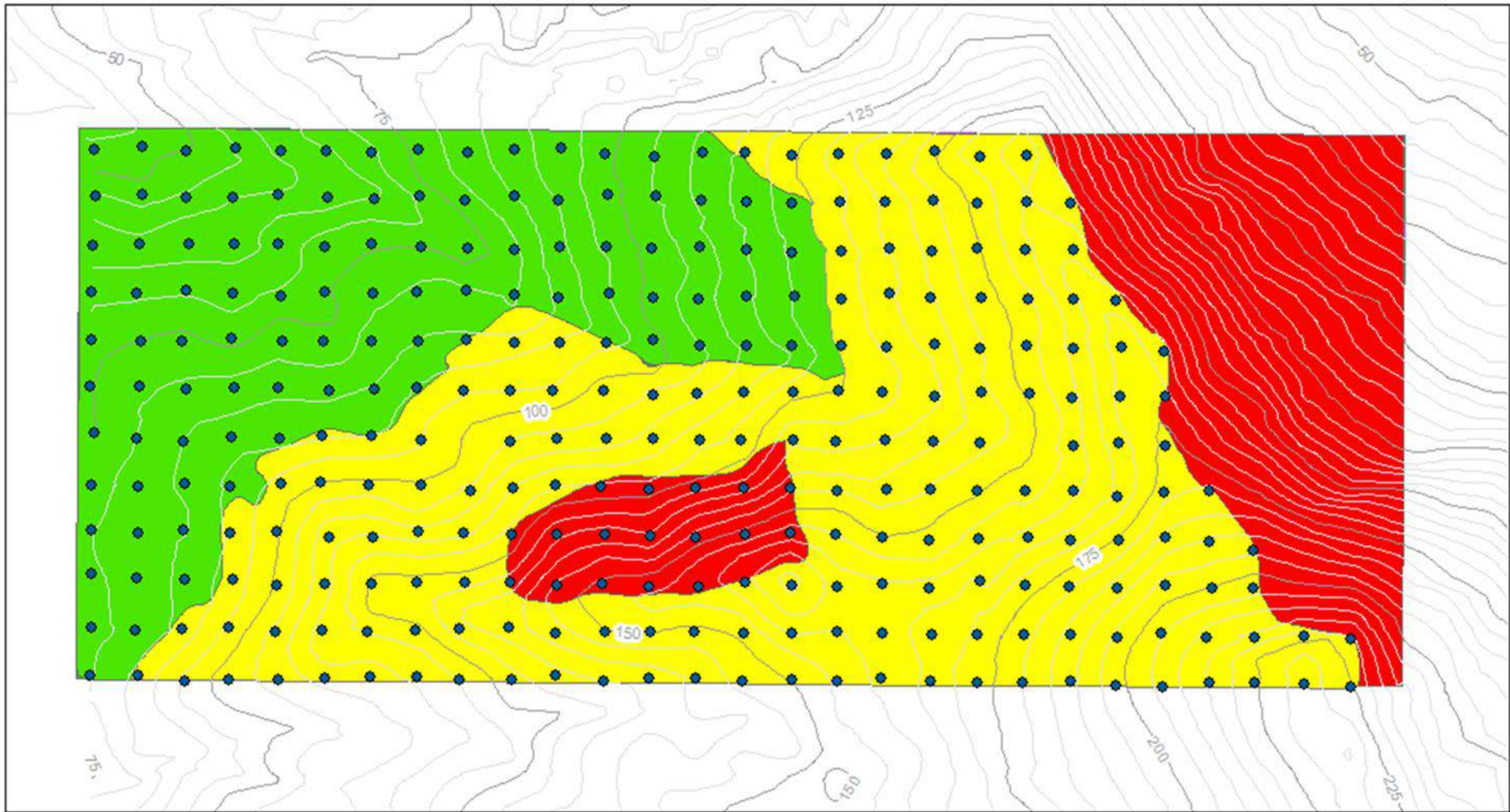

Optimization Software:
www.balesio.com

LAMPIRAN C

KEMIRINGAN

LERENG BLOK E PT







 Optimization Software:

www.balesio.com

LERENG



16°-30°

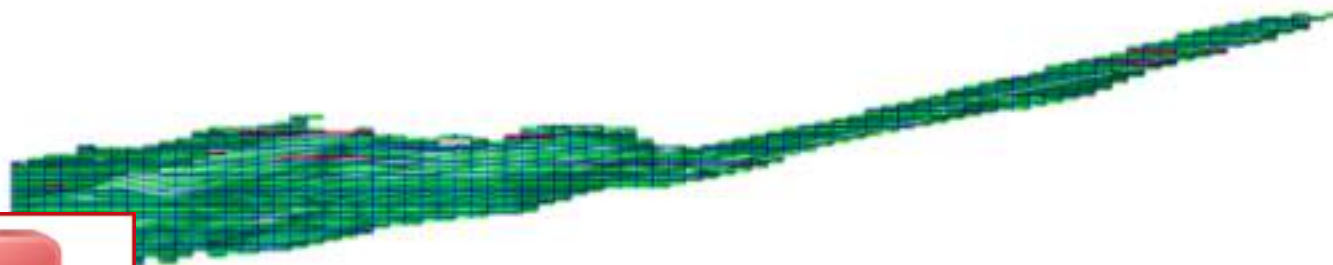
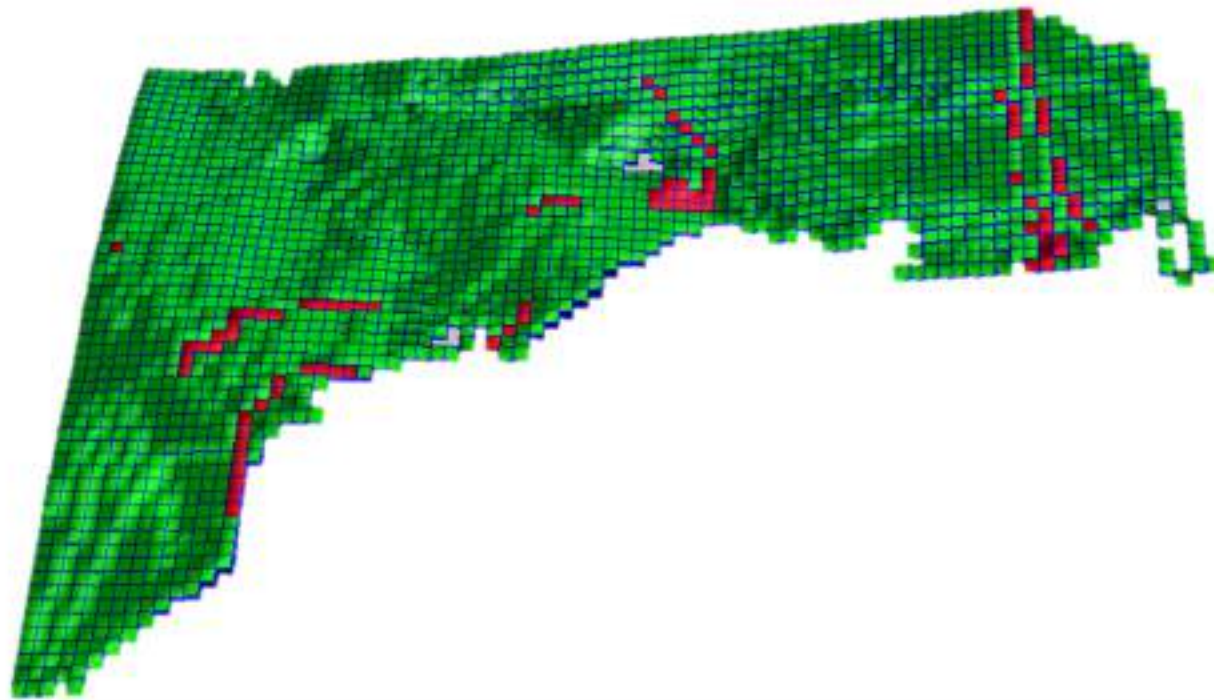


31°-55°



LAMPIRAN D
BLOK MODEL LAPISAN
LIMONIT DAN SAPROLIT
TIAP KEMIRINGAN
LERENG





Notes:

Universal Transverse Mercator Projection Zone 51S
Datum Unit: WGS 84

LEGENDA:

- Waste
- Ore
- CoG 1.2%

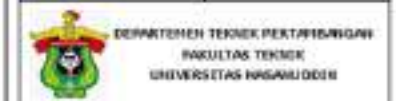
PETA TUNJUK LOKASI



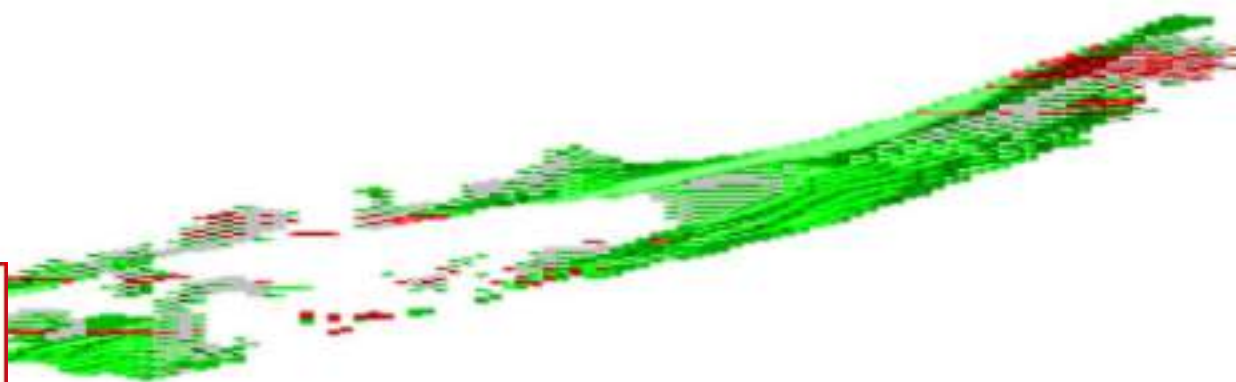
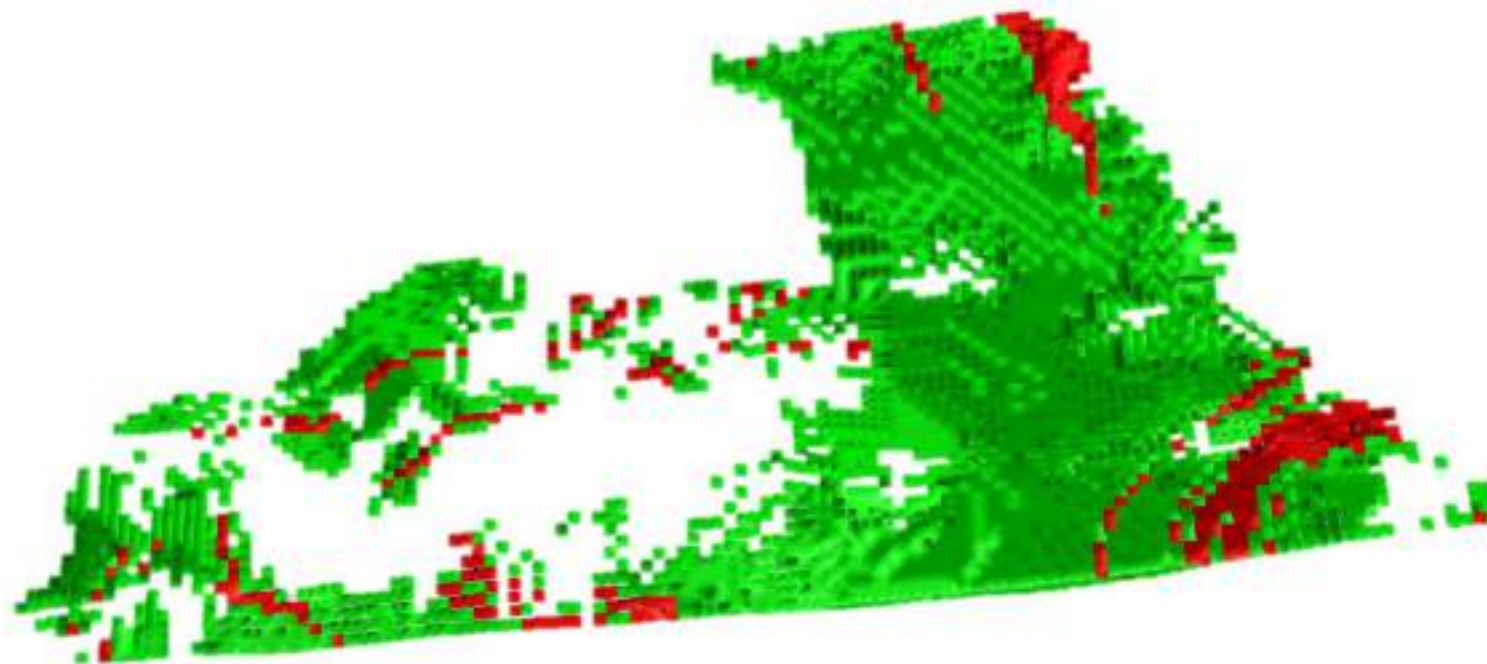
**Blok Model Limonit
Kemiringan Lereng 0°-15°**



DIGAMBAR OLEH: HALIDITAR RANGGA S	DIPERIKSA OLEH: Arani Iyasa, ST.MT.PHD
SKALA 1 : 5.000	Sember Orignal: A3



Optimization Software:
www.balesio.com



Notes:
 Universal Transverse Mercator Projection Zone 51S
 Datum Unit: WGS 84

LEGENDA:

- Waste
 - Ore
- CoG 1.2%

PETA TUNJUK LOKASI




**Blok Model Limonit
 Kemiringan Lereng 16°-30°**

 **PT. SINAR JAYA SULTRA UTAMA**
 WATURAMBANA, LOWOLO KEPULAUAN
 BOMBAYE UTARA, SULAWESI TENGGARA

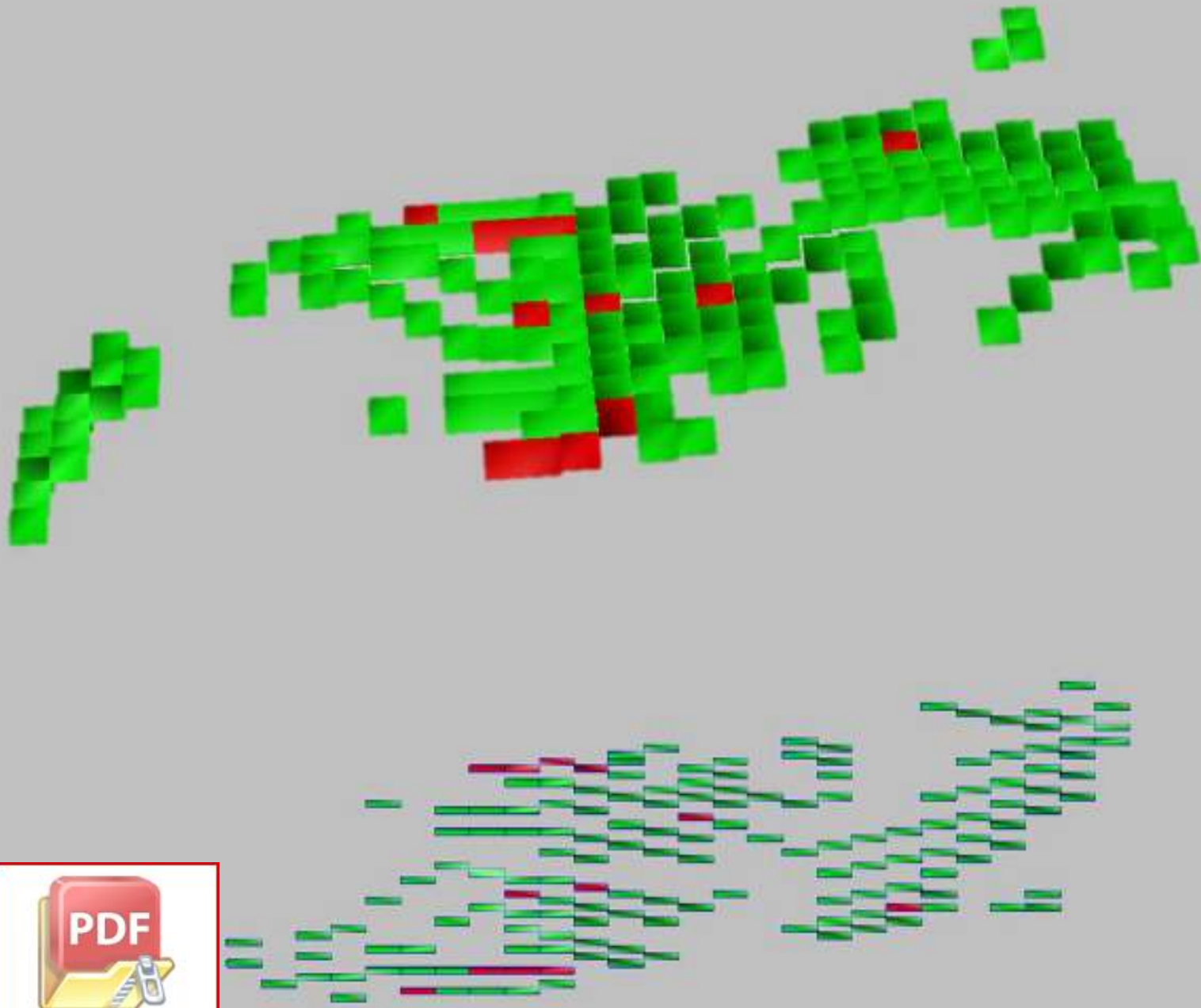
DIGAMBAR OLEH: HALL INTAR RANGGA S	DIPERIKSA OLEH: Aran Iyos, ST.MT,Ph.D
---------------------------------------	--

SKALA 1 : 5.000	Gambar Original: AS
--------------------	------------------------

 **DEPARTEMEN TEKNIK PERTAMBANGAN
 FAKULTAS TEKNIK
 UNIVERSITAS HASANUDIN**



Optimization Software:
www.balesio.com



Notes:

Universal Transverse Mercator Projection Zone 51S
Datum: UTM 84

LEGENDA:

- Waste
 - Ore
- CoG 1.2%

PETA TUNJUK LOKASI



**Blok Model Limonit
Kemiringan Lereng 31°-55°**



DIGAMBAR OLEH:
HALLINTAR RANGGA S

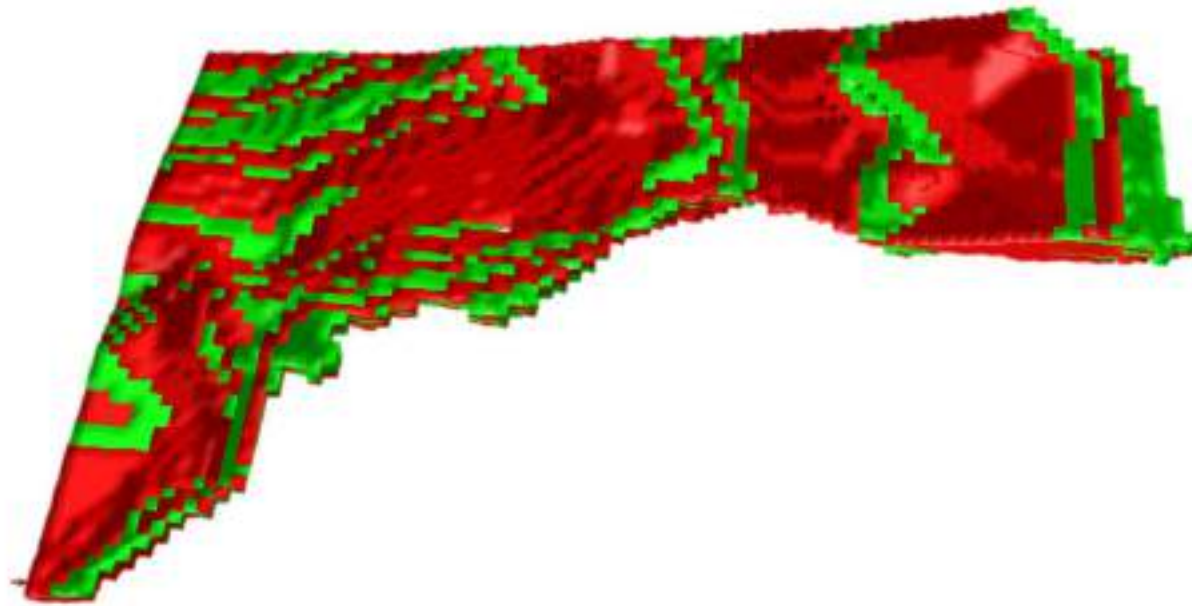
DIPERIKSA OLEH:
Aren Dyes, ST.MT, Ph.D

SKALA
1 : 5.000

Gambar Original:
A3



Optimization Software:
www.balesio.com



Notes:

Universal Transverse Mercator Projection Zone 51S
Datum Unit: WGS 84

LEGENDA:

- Waste
 - Ore
- CoG 1.2%

PETA TUNJUK LOKASI



**Blok Model Saprolit
Kemiringan Lereng 0°-15°**



PT. SINAR JAYA SULTRA UTARA
WATURUBAHU, LAGULO KEPULAUAN
MOMANE UTARA, SULLAWESI TENGGARA

DIGAMBAR OLEH:
HALDIANTAR RANGGA S

DIPERIKSA OLEH:
Aren Dyak, ST.MT, Ph.D

SKALA
1 : 5.000

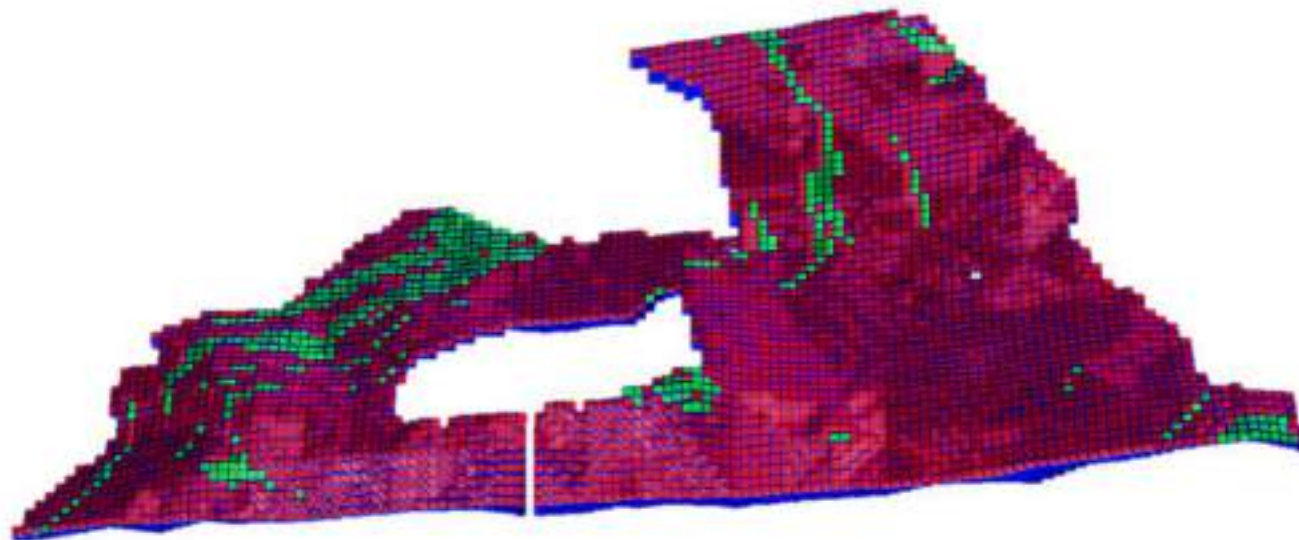
Gambar Original
A3



DEPARTEMEN TEKNIK PERTAMBANGAN
FAKULTAS TEKNIK
UNIVERSITAS HIDAYATULLAH



Optimization Software:
www.balesio.com



14/10/11
 Universal Transverse Mercator Projection Zone 51S
 Datum Unit: WGS 84

LEGENDA:

- Waste
 - Ore
- CoG 1.2%

PETA TUNJUK LOKASI



**Blok Model Saprolit
 Kemiringan Lereng 16°-30°**


PT. SINAR JAYA SULTERA UTAMA
 BATURAHIMBA, LAELO KERALAU
 KONAWE UTARA, SULAWESI TENGGARA

DIGAMBAR OLEH:
 HALI INTAR RANGGA S

DIPERIKSA OLEH:
 Arian Dyah, ST.MT.PH.D

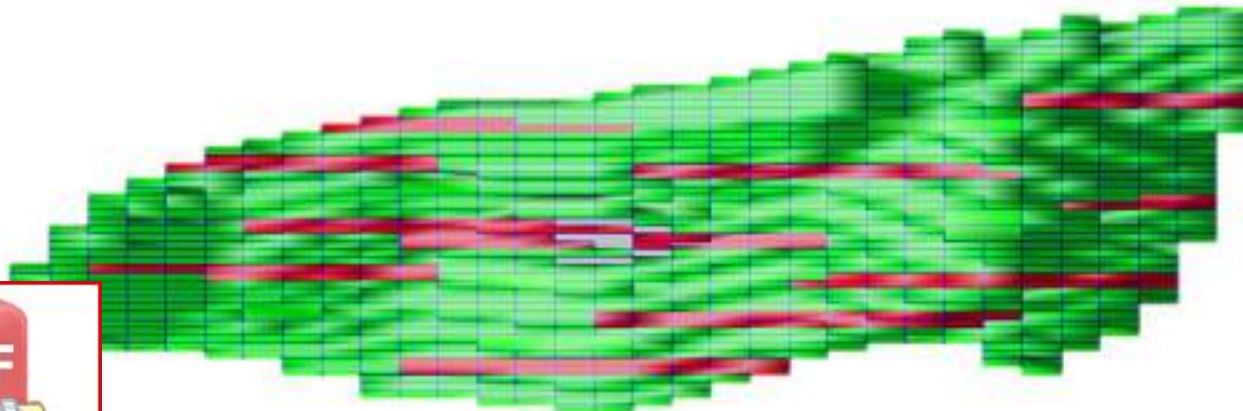
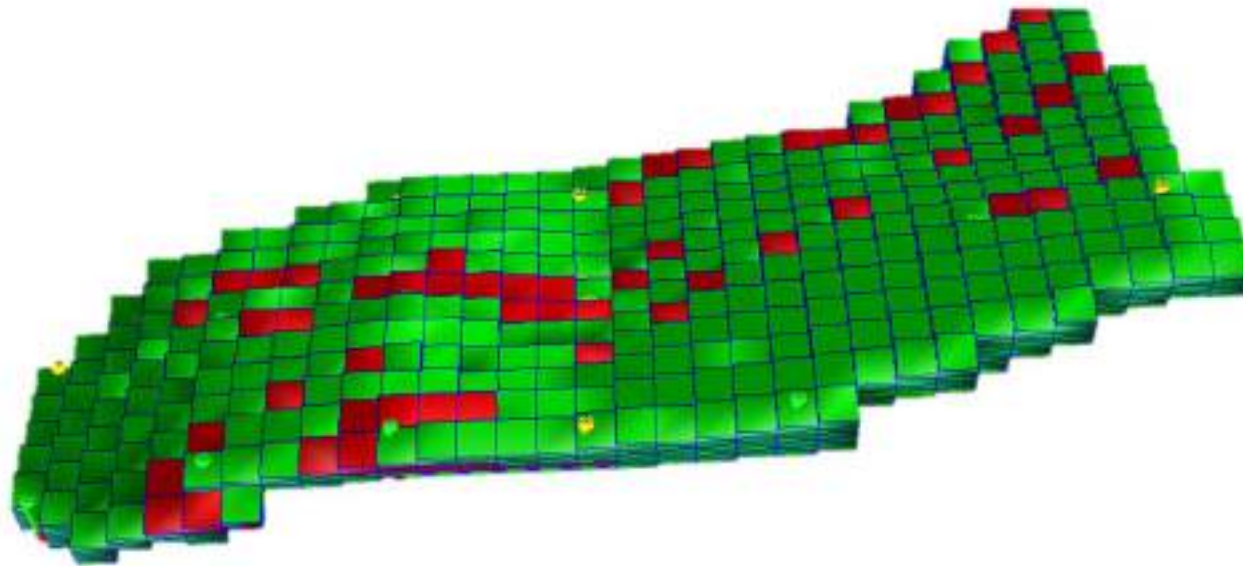
SKALA
 1 : 5.000

Gambar Original:
 A3

 **DEPARTEMEN TEKNIK PERTAMBANGAN
 FAKULTAS TEKNIK
 UNIVERSITAS HASANUDIN**



Optimization Software:
www.balesio.com



Proyeksi:

Universal Transverse Mercator Projection Zone 51S
Datum: UTM; WGS 84

LEGENDA:

- Waste
 - Ore
- CoG 1.2%

PETA TUNJUK LOKASI



**Blok Model Saprolit
Kemiringan Lereng 31^o-55^o**



PT. SEHAR JAYA SULTRA UTAMA
WOTURAMBANA, LABOLO KEPULAUAN
KORAWA UTARA, SULAWESI TENGGARA

DIGAMBAR OLEH:
HALILINTAR RAKONGAS

DIPERIKSA OLEH:
Arjan Iyos, ST.MT.Ph.D

SKALA
1 : 5.000

Gambar Original
A3



**DEPARTEMEN TEKNIK PERTAMBANGAN
FAKULTAS TEKNIK
UNIVERSITAS HASANUDIN**



Optimization Software:
www.balesio.com

LAMPIRAN E

CONTOH DATA BOR

(ASSAY, COLLAR, SURVEI, GEOLOGI)



1. Data Collar

	HID	x	y	z	DEPT H
	TBA82E	426050. 2	962639 9	82.452	18
	TBA91E	426050. 9	962650 0	74.8537	11.5
	TBA92E	426149. 1	962650 0	75.945	11
	TBA94E	426350. 3	962649 9	104.583 4	13
E	TBA100	426051. 6	962660 1	46.823	13
E	TBA101	426149. 9	962659 9	64.0649	5
E	TBA102	426250. 4	962660 1	87.8852	12
E	TBA103	426351. 1	962660 0	110.706 6	10
E	TBB208	426049. 2	962634 9	81.201	17
E	TBB233	426049. 2	962644 9	80.0581	12
E	TBB234	426099. 7	962645 0	87.636	7
E	TBB250	426099. 9	962650 1	73.067	8
E	TBB251	426199. 4	962650 0	84.9031	16.5
E	TBB253	426399. 8	962649 9	116.446	24
E	TBB258	426049. 7	962655 0	61.6008	11
E	TBB259	426100. 8	962655 0	61.2866	8
E	TBB260	426149. 2	962654 9	71.979	17.4
E	TBB261	426200. 6	962655 0	74.9482	11

2. Data Survei



DEPTH	dip	azimuth
18	-90	0
11.5	-90	0
11	-90	0

TBA94E	13	-90	0
TBA100E	13	-90	0
TBA101E	5	-90	0
TBA102E	12	-90	0
TBA103E	10	-90	0
TBB208E	17	-90	0
TBB233E	12	-90	0
TBB234E	7	-90	0
TBB250E	8	-90	0
TBB251E	16.5	-90	0
TBB253E	24	-90	0
TBB258E	11	-90	0
TBB259E	8	-90	0
TBB260E	17.4	-90	0
TBB261E	11	-90	0

3. Data Assay

HID	from	to	Ni
TBA82E	0	1	0.79
TBA82E	1	2	0.84
TBA82E	2	3	0.88
TBA82E	3	4	0.85
TBA82E	4	5	0.7
TBA82E	5	6	0.93
TBA82E	6	7	1.06
TBA82E	7	8	1.62
TBA82E	8	9	1.86
TBA82E	9	10	1.15
TBA82E	10	11	1.32
TBA82E	11	12	1.09
TBA82E	12	13	0.87
TBA82E	13	14	0.81
TBA82E	14	15	0.49
TBA82E	15	16	0.74
TBA82E	16	17	0.44
TBA82E	17	18	0.3

4. Data Geologi

from	to	litology
0	1	LIM



TBA82E	1	2	LIM
TBA82E	2	3	LIM
TBA82E	3	4	LIM
TBA82E	4	5	LIM
TBA82E	5	6	LIM
TBA82E	6	7	LIM
TBA82E	7	8	SAP
TBA82E	8	9	SAP
TBA82E	9	10	SAP
TBA82E	10	11	SAP
TBA82E	11	12	SAP
TBA82E	12	13	SAP
TBA82E	13	14	SAP
TBA82E	14	15	BRK
TBA82E	15	16	BRK
TBA82E	16	17	BRK
TBA82E	17	18	BRK

