

DAFTAR PUSTAKA

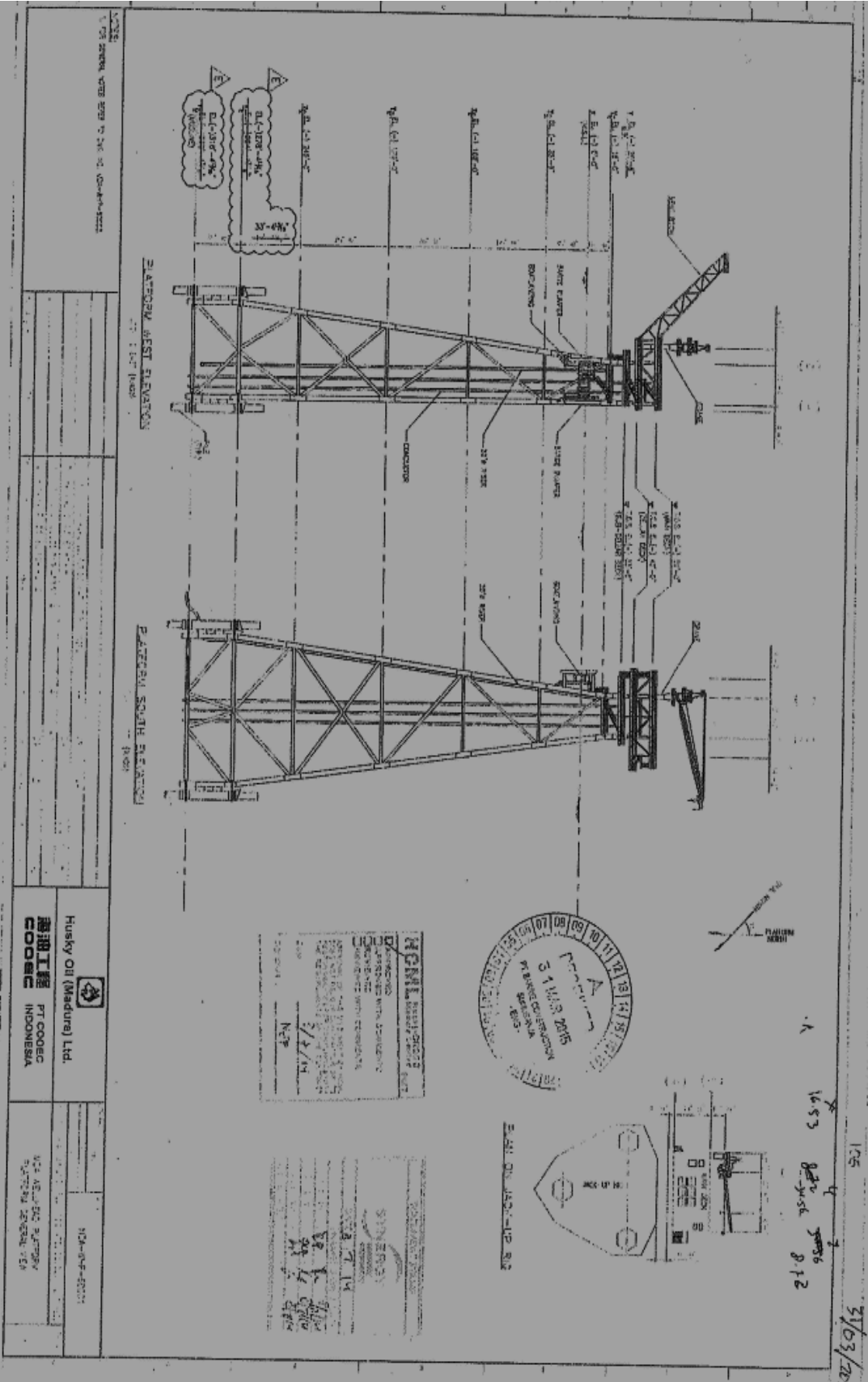
- [1] E. Indahsari, "Manajemen Korosi Berbasis Resiko Pada Struktur Jacket," *Offshore Eng. Inst. Teknol. Sepuluh Nopember. Surabaya*, 2009.
- [2] W. Widianingrum, J. Sade, and H. Palippui, "Analisis Peletakan dan Kebutuhan Proteksi Katodik Pada Mooring Buoy di Pertamina Fuel Terminal Luwuk," *Zo. Laut J. Inov. Sains Dan Teknol. Kelaut.*, vol. 2, no. 2, pp. 54–57, Jul. 2021, doi: 10.20956/zi.v2i2.14081.
- [3] N. Azisah, D. Paroka, and W. Wahyuddin, "Analisa Penempatan Dan Kebutuhan Proteksi Katodik Pada Sistem Pipa Gas Bawah Laut Offshore Dari Pulau Pemping Ke Tanjung Uncang Batam," *Zo. Laut J. Inov. Sains Dan Teknol. Kelaut.*, 2020, doi: 10.20956/zi.v1i3.11978.
- [4] P. B. C. HCML, *EPCI For MDA & MBH Fields Development Project Execution Plan*, no. 332004201. 2015.
- [5] B. Y. Rahardiana, "Analisis Struktur Jacket 4 Kaki di Selat Makasar." Bandung: Program Studi Teknik Kelautan ITB, 2008.
- [6] Angus Mather, "Offshore Engineering - an introduction," *Fuel and Energy Abstracts*, vol. 36, no. 5. p. 327, 1995. doi: 10.1016/0140-6701(95)96334-9.
- [7] P. M. Ali Zarkasyi, "Desain Struktur Fixed Platform Tango Pada Wilayah Operasi Sepinggan," 2015.
- [8] S. Ramadhan, "Pencegahan Korosi Pada Bangunan Lepas Pantai," *Ilmu teknik sipil*, 2012. <https://www.ilmutekniksipil.com/teknik-lingkungan/pencegahan-korosi-pada-bangunan-lepas-pantai> (accessed Apr. 01, 2022).

- [9] F. Gapsari, *Pengantar korosi*. Universitas Brawijaya Press, 2017.
- [10] R. T. Kennet and J. Chamberlain, "Korosi: untuk Mahasiswa Sains dan Rekayasa," *Jakarta PT Gramedia Pustaka Utama*, 1991.
- [11] B. Sudjasta, P. J. Suranto, and H. Setiani, "Analisis Kebutuhan Pemasangan Zink Anode Untuk Mencegah Korosi Pada Lambung Kapal Kapal General Cargo," *Bina Tek.*, vol. 14, no. 2, p. 209, 2018, doi: 10.54378/bt.v14i2.402.
- [12] I. Utami, "Proteksi Katodik Dengan Anoda Tumbal Sebagai Pengendali Laju Korosi Baja Dalam Lingkungan Aqueous," *J. Tek. Kim.*, vol. 3, no. 2, 2009.
- [13] S. S. Pathak, S. K. Mendon, M. D. Blanton, and J. W. Rawlins, "Magnesium-based sacrificial anode cathodic protection coatings (Mg-rich primers) for aluminum alloys," *Metals (Basel)*, vol. 2, no. 3, pp. 353–376, 2012.
- [14] N. Christina, "Proteksi katodik," 2018.
<https://nadyameichristinakl17.wordpress.com/2018/11/23/proteksi-katodik/> (accessed Apr. 01, 2022).
- [15] BKI, "Rules for the Classification and Construction Part 1. Seagoing Ships," *Rules Hull*, vol. 8, 2017.
- [16] M. G. Fontana, "Mars Fontana Corrosion Engineering Mcgraw-Hill International Editions.pdf," 1986. 1987.
- [17] D. N. Veritas, "Dnv-Rp-B401 Cathodic Protection Design," in *Computer*, vol. 22, no. January 2005, 2007.
- [18] A. W. Peabody, "Control of pipeline corrosion.," 1967.
- [19] Alibaba, "Anode aluminum anode with stand off pipe for marine dock, jetty, bridge cathodic protection YX-AL-SSF1."

https://www.alibaba.com/product-detail/Aluminum-Slender-Anode-Aluminum-Slender-Anode_1600522147920.html?spm=a2700.galleryofferlist.normal_offer.d_title.4c92357fdo12k9&s=p (accessed Aug. 01, 2022).

LAMPIRAN

Lampiran 1: *General Arrangement MDA Wellhead Platform*

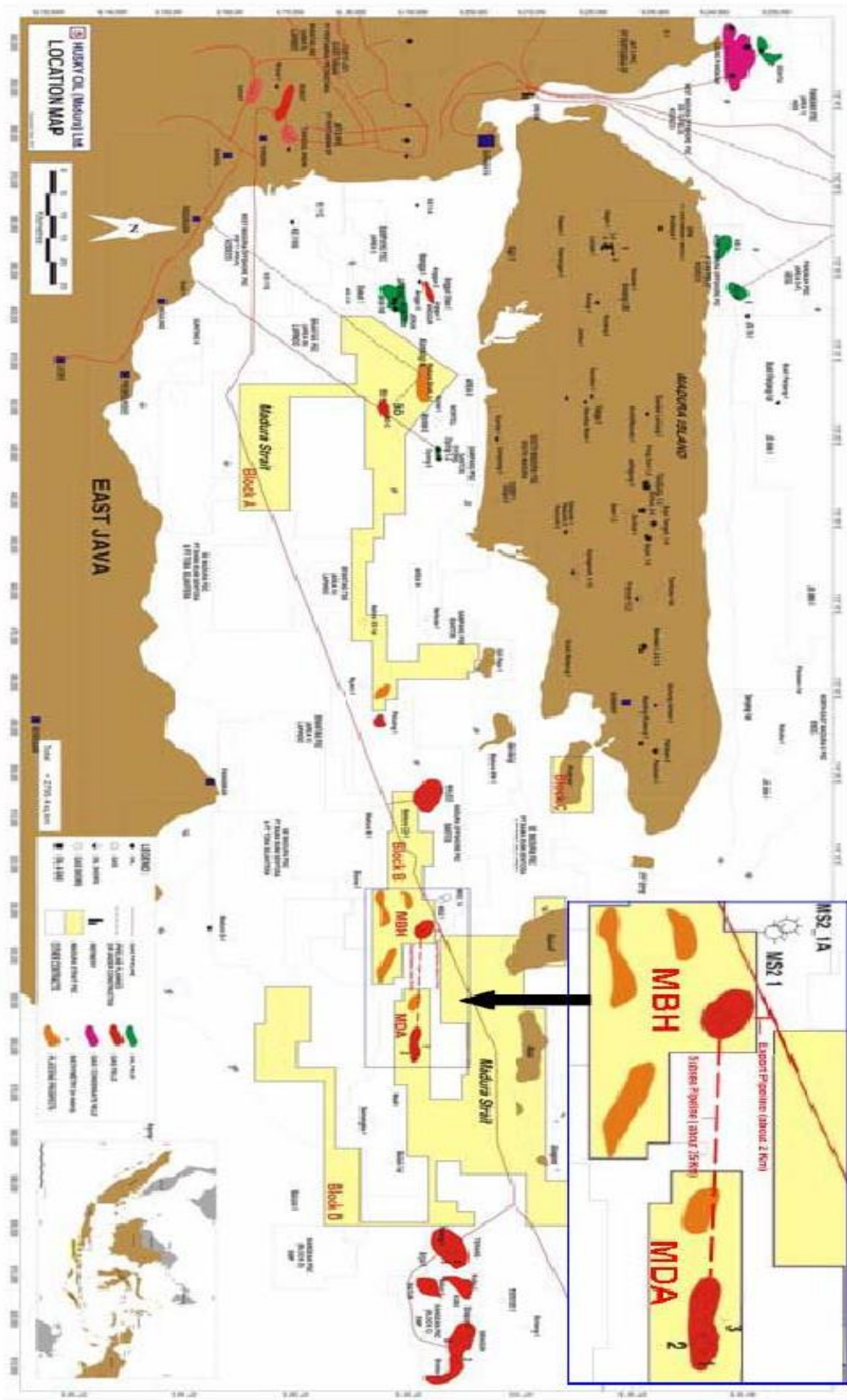


Husky Oil (Madura) Ltd.
PT. COGAS
PT. COGAS
INDONESIA

PT. COGAS
 PT. COGAS
 PT. COGAS

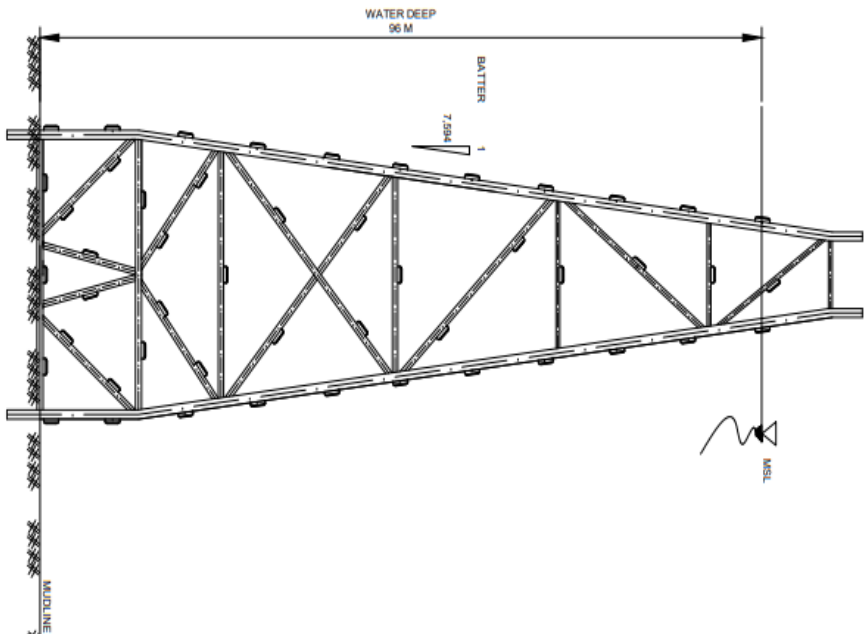
105
 1653
 812
 3/03/20

Lampiran 2: Peta Lokasi MDA *Wellhead Platform*

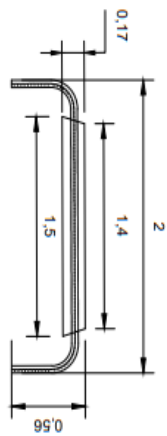
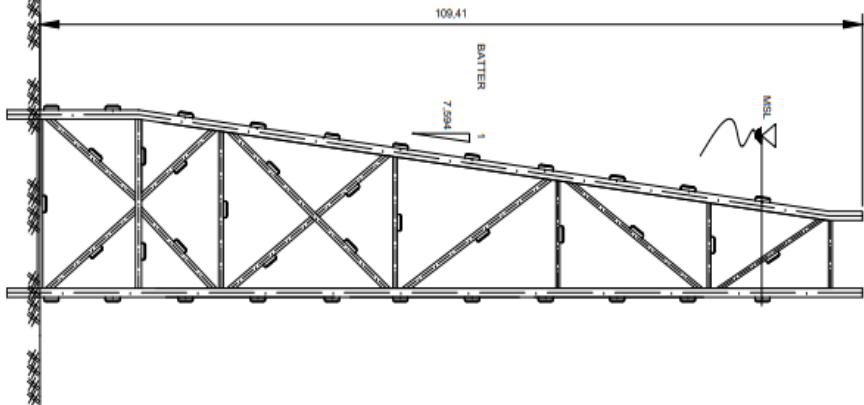


Lampiran 3: Usulan Peletakan Anoda Korban Pada Anjungan
MDA

**TAMPAK MDA WELLHEAD
PLATFORM PADA ROW A**



**TAMPAK MDA WELLHEAD
PLATFORM PADA ROW 1**



DETAIL ANODA

SKALA 1:35

KETERANGAN:

1. JUMLAH ANODA PADA KAKI JACKET = 43 ANODA
2. JUMLAH ANODA PADA ROW A = 27 ANODA
3. JUMLAH ANODA PADA ROW B = 27 ANODA
4. JUMLAH ANODA PADA ROW 1 = 18 ANODA
5. JUMLAH ANODA PADA ROW 2 = 18 ANODA



DEPARTEMEN TEKNIK KELAUTAN
FAKULTAS TEKNIK UNIVERSITAS HASANUDIN

RENCANA PENEMPATAN ANODA KORBAN
MDA WELLHEAD PLATFORM

SKALA	1:200	T. TAMBAL	TANGGAL	EATY A.T.A.N
DRAWING	MDA WELLHEAD			
REVISI				
DATE				
REVISI				
DATE				
REVISI				
DATE				

Lampiran 4: Tabel Rangkuman Hasil Perhitungan

Bagian Anjungan	Diameter (m)	Panjang (m)	Luas Proteksi (m ²)	Kebutuhan Arus (Ampere)	Massa Anoda (kg)	Jumlah Anoda	Jarak Antar Anoda (m)	Laju Korosi (mpy)
<i>Jacket Leg</i>								3,65
<i>jacket leg 1</i>	1,09	96	329,64	10,54	513,36	43	7,23	
<i>jacket leg 2</i>	1,09	96	329,64					
<i>jacket leg 3</i>	1,09	96	329,64					
<i>jacket leg 4</i>	1,09	96	329,64					
Total			1318,56					
<i>Row A</i>								
<i>brace diagonal 1</i>	0,50	16,94	27,03	6,54	318,29	27	15,44	
<i>brace diagonal 2</i>	0,60	23,13	44,29				21,63	
<i>brace diagonal 3</i>	0,71	28,22	63,05				12,61	
<i>brace diagonal 4</i>	0,71	67,74	151,35				15,43	
<i>brace diagonal 5</i>	0,71	16,79	37,51				6,89	
<i>brace diagonal 6</i>	0,71	16,79	37,51				6,89	
<i>brace diagonal 7</i>	0,71	12,69	28,35				11,19	
<i>brace diagonal 8</i>	0,71	12,69	28,35				11,19	
<i>brace diagonal 9</i>	0,71	16,07	35,90				6,53	
<i>brace diagonal 10</i>	0,71	16,07	35,90				6,53	
<i>brace horizontal a</i>	0,50	12,3	19,62				10,8	
<i>brace horizontal b</i>	0,50	17,6	28,08				16,1	
<i>brace horizontal c</i>	0,71	23,29	52,03				21,79	
<i>brace horizontal d</i>	0,71	29,4	65,68				27,9	
<i>brace horizontal e</i>	0,81	16,14	41,21				14,64	
<i>brace horizontal f</i>	0,81	16,14	41,21				14,64	

Bagian Anjungan	Diameter (m)	Panjang (m)	Luas Proteksi (m ²)	Kebutuhan Arus (Ampere)	Massa Anoda (kg)	Jumlah Anoda	Jarak Antar Anoda (m)	Laju Korosi (mpy)
<i>brace horizontal g</i>	0,81	10,94	27,93				9,44	
<i>brace horizontal h</i>	0,81	9,6	24,51				8,1	
<i>brace horizontal i</i>	0,81	10,94	27,93				9,44	
<i>Total</i>			817,53					
<i>Row B</i>								
<i>brace diagonal 1</i>	0,50	16,94	27,03	6,54	318,29	27	15,44	
<i>brace diagonal 2</i>	0,60	23,13	44,29				21,63	
<i>brace diagonal 3</i>	0,71	28,22	63,05				12,61	
<i>brace diagonal 4</i>	0,71	67,74	151,35				15,43	
<i>brace diagonal 5</i>	0,71	16,79	37,51				6,89	
<i>brace diagonal 6</i>	0,71	16,79	37,51				6,89	
<i>brace diagonal 7</i>	0,71	12,69	28,35				11,19	
<i>brace diagonal 8</i>	0,71	12,69	28,35				11,19	
<i>brace diagonal 9</i>	0,71	16,07	35,90				6,53	
<i>brace diagonal 10</i>	0,71	16,07	35,90				6,53	
<i>brace horizontal a</i>	0,50	12,3	19,62				10,8	
<i>brace horizontal b</i>	0,50	17,6	28,08				16,1	
<i>brace horizontal c</i>	0,71	23,29	52,03				21,79	
<i>brace horizontal d</i>	0,71	29,4	65,68				27,9	
<i>brace horizontal e</i>	0,81	16,14	41,21				14,64	
<i>brace horizontal f</i>	0,81	16,14	41,21				14,64	
<i>brace horizontal g</i>	0,81	10,94	27,93				9,44	
<i>brace horizontal h</i>	0,81	9,6	24,51				8,1	

Bagian Anjungan	Diameter (m)	Panjang (m)	Luas Proteksi (m ²)	Kebutuhan Arus (Ampere)	Massa Anoda (kg)	Jumlah Anoda	Jarak Antar Anoda (m)	Laju Korosi (mpy)
<i>brace horizontal i</i>	0,81	10,94	27,93				9,44	
Total			817,53					
<i>Row 1</i>								
<i>brace diagonal 1</i>	0,50	15,77	25,16	4,47	217,81	18	14,27	
<i>brace diagonal 2</i>	0,60	21,28	40,75				19,78	
<i>brace diagonal 3</i>	0,71	22,91	51,18				21,41	
<i>brace diagonal 4</i>	0,71	53,7	119,98				11,92	
<i>brace diagonal 5</i>	0,71	12,42	27,75				10,92	
<i>brace diagonal 6</i>	0,71	13,22	29,53				11,72	
<i>brace diagonal 7</i>	0,71	14,76	32,97				13,26	
<i>brace diagonal 8</i>	0,71	14,76	32,97				13,26	
<i>brace horizontal a</i>	0,50	10,17	16,23				8,67	
<i>brace horizontal b</i>	0,50	12,83	20,47				11,33	
<i>brace horizontal c</i>	0,60	15,67	30,00				14,17	
<i>brace horizontal d</i>	0,60	18,72	35,85				17,22	
<i>brace horizontal e</i>	0,81	10,08	25,73				8,58	
<i>brace horizontal f</i>	0,81	10,08	25,73				8,58	
<i>brace horizontal g</i>	0,71	20,17	45,06				18,67	
Total			559,44					
<i>Row 2</i>								
<i>brace diagonal 1</i>	0,50	15,77	25,16	4,47	217,81	18	14,27	
<i>brace diagonal 2</i>	0,60	21,28	40,75				19,78	
<i>brace diagonal 3</i>	0,71	22,91	51,18				21,41	

Bagian Anjungan	Diameter (m)	Panjang (m)	Luas Proteksi (m ²)	Kebutuhan Arus (Ampere)	Massa Anoda (kg)	Jumlah Anoda	Jarak Antar Anoda (m)	Laju Korosi (mpy)
<i>brace diagonal 4</i>	0,71	53,7	119,98				11,92	
<i>brace diagonal 5</i>	0,71	12,42	27,75				10,92	
<i>brace diagonal 6</i>	0,71	13,22	29,53				11,72	
<i>brace diagonal 7</i>	0,71	14,76	32,97				13,26	
<i>brace diagonal 8</i>	0,71	14,76	32,97				13,26	
<i>brace horizontal a</i>	0,50	10,17	16,23				8,67	
<i>brace horizontal b</i>	0,50	12,83	20,47				11,33	
<i>brace horizontal c</i>	0,60	15,67	30,00				14,17	
<i>brace horizontal d</i>	0,60	18,72	35,85				17,22	
<i>brace horizontal e</i>	0,81	10,08	25,73				8,58	
<i>brace horizontal f</i>	0,81	10,08	25,73				8,58	
<i>brace horizontal g</i>	0,71	20,17	45,06				18,67	
Total			559,44					
Jumlah Total			4072,52	32,58	1586	132		3,65