

DAFTAR PUSTAKA

- Aji, I. 2020. Pemanfaatan Cadangan Marginal Batubara dengan Melakukan Kegiatan Penambangan Batubara Menggunakan Metode Auger Mining di PT Multi Harapan Utama Dalam Rangka Penerapan Aspek Konservasi Mineral dan Batubara. Prosiding TPT XXIX PERHAPI 2020.
- Anggriani, D. Devy, S.D. Trides, T. 2017. Analisis Kestabilan Pilar pada Metode Penambangan Auger Mining, Berdasarkan Persamaan Obert-Duvall pada Seam 22 Pit S17GS PT Kitadin Embalut Site. Samarinda: Jurnal Teknik Mineralogi FT UNMUL, Vol. 5, No. 1.
- Arif, I. 2016. Geoteknik Tambang. Mewujudkan Produksi Tambang yang Berkelanjutan dengan Menjaga Kestabilan Lereng. Jakarta: PT. Gramedia Pustaka Utama. p 339.
- Bienawski, Z. T. 1967, The Effect Of Speciment Size On Compressive Strength Of Coal, National Mechanical Engineering Research Institute: South Africa.
- Brady, B.H.G., dan Brown, E.T., 2004, Rock Mechanics for Underground Mining Third Edition, USA: Springer
- Chen, D. 1994. Design of Rockbolting System for Underground Excavations. Australia: Thesis Report. Department of Civil and Mining Engineering. University of Wollongong.
- Darman, H dan Sidi, F.H. 2000. An Outline of The Geology of Indonesia. Jakarta: The Indonesian Association of Geologist (IAGI).
- Deere, D. U. dan Deere, D. W., 1988. The Rock Quality Designation (RQD) Index in Practice. Rock Classification Systems for Engineering Purposes, Kirkaldie, L. (Ed.). American Society for Testing and Material: Philadelphia p 91-101.
- Direktur Jenderal Minerba. 2020. KEPUTUSAN DIREKTUR JENDERAL MINERAL DAN BATUBARA KEMENTERIAN ENERGI DAN SUMBERDAYA MINERAL NOMOR 182. K/30/DJB/30/2020 TENTANG PETUNJUK TEKNIS PELAKSANAAN KONSERVASI MINERAL DAN BATUBARA DALAM RANGKA PELAKSANAAN KAIDAH TEKNIK PERTAMBANGAN YANG BAIK. Jakarta: Kementerian Energi dan Sumberdaya Mineral.
- Dougall, A.D. 2010. A Review Of The Current And Expected Underground Coal Mining Methods And Profiles And An Evaluation Of The Best Practices Associated With These. South Africa: Faculty of Engineering and the Built Environment, University of the Witwatersrand, Johannesburg.

- Follington, I.L., Deeter, R., Share, D., Moolman, C. 2001. A New Underground Auger Mining System. *The Journal of The South African Institute of Mining and Metallurgy*: p 25—32.
- Hakim, I. 2014. Dampak Kebijakan Pertambangan bagi Masyarakat Bengkuring Kelurahan Sempaja Selatan Kecamatan Samarinda Utara. Samarinda: *eJournal Ilmu Pemerintahan*.
- Hoek, E. 2006. *Practical Rock Engineering*. Canada.
- Hoek E., 2006. *Practical Rock Engineering*. North Vancouver. British Columbia.
- Hoek, E dan Brown. 2002. *Hoek-Brown Failure Criterion-2002 Edition*. Canada: Rocscience.
- ISRM. 1977. Suggested Methods for Determining Water Content, Porosity, Density, Absorption and Related Properties and Swelling and Slake-Durability Index Properties. *Int. J. Rock Mech. Min. Sci. Geomech*: p 143—145.
- ISRM. 1981. Commission on classification of rocks and rock masses, Basic geotechnical description of rock masses. *Int. J. Rock Mech. Min. Sci. Geomech*: p 85—110.
- Kementerian Energi dan Sumber Daya Mineral. 2021. Cadangan Batubara Masih 38,84 Miliar Ton, Teknologi Bersih Pengelolaannya Terus Didorong. Jakarta: *Siaran Pers*, No: 246.Pers/04/SJI/2021.
- Lin, N.Z. 2014. *Mining System and Design for Development of Underground Coal Mine From Open-Cut Highwall for Thick Coal Seam*. Japan: Department of Earth Resources Engineering Graduate School of Engineering Kyushu University, Fukuoka.
- Leba, E.P. Erong, F.N.O. Marasabes, Z. dan Cahyono, Y.D.G. 2020. Analisis Pengaruh Kuat Tekan Batu Andesit Terhadap Model dan Arah Rekahan, Surabaya: *Prosiding Semitan II ITATS*, Vol. 2, No. 1.
- Marinos, P. dan Hoek, E. 2000. A Geologically Friendly Tool For Rock Mas Strength Estimation. Australia: Paper presented at the ISRM International Symposium, Melbourne.
- Matsui, K. dan Shimada, H., Kramadibrata, S dan Rai, M.S., 2001, Some Considerations of Highwall Mining Systems in Coal Mines, Turkey: 17th International Mining Congress & Exhibition.
- Menteri Energi dan Sumberdaya Mineral. 2018. KEPUTUSAN MENTERI ENERGI DAN SUMBERDAYA MINERAL REPUBLIK INDONESIA NOMOR 1827 K/30/MEM/2018

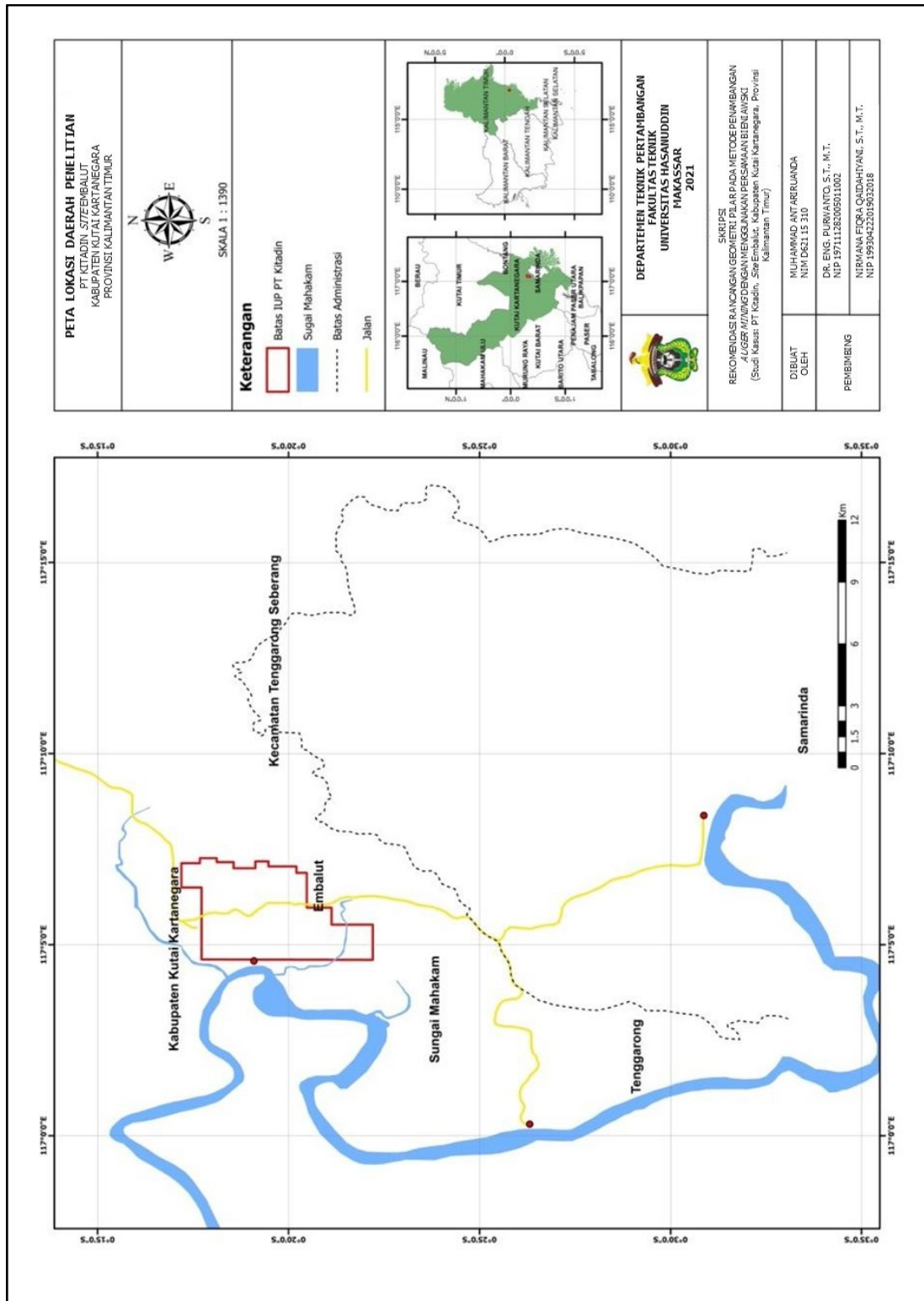
TENTANG PEDOMAN PELAKSANAAN KAIDAH TEKNIK PERTAMBANGAN YANG BAIK. Jakarta: Kementerian Energi dan Sumberdaya Mineral.

- PT. Kitadin. 2016, Studi Kelayakan Peningkatan Produksi Batubara Hingga 1,5 Juta Ton/ Tahun dan Rencana Penerapan Auger Mining. Kutai kartanegara: PT.Kitadin, Site Embalut.
- Rai M.A., Kramadibrata S., dan Wattimena R.K. 2014. Mekanika Batuan. Program Studi Teknik Pertambangan, Institut Teknologi Bandung.
- Sasaoka T., Hamanaka A., Shimada H., Matsui K., Lin N. Z., dan Sulistianto B. 2015. Punch Multi-slice Longwall Mining System for Thick Coal Seam under Weak Geological Conditions. *Journal of Geological Resource and Engineering* 1 p 28—36.
- Sasaoka T., Shimada H., Hamanaka A., Sulistianto B., Ichinose M., dan Matsui K. 2015. Geotechnical Issues on Application of Highwall Mining System in Indonesia. *Vietrock 2015 an ISRM Specialized Conference, Hanoi, Vietnam.*
- Singh, B. dan Goel, R. K., 1999. *Rock Mass Classification (A Practical Approach in Civil Engineering)*. 1st ed. Oxford: Elsevler.
- Singh, B., dan Goel, R., K. 2006. *Tunneling In Weak Rock*. Amsterdam: Elsevier.
- Song, G., Yang, S. 2015. Investigation into Strata Behaviour and Fractured Zone Height – Seam Longwall Coal Mine. South Africa: *The Journal of The Southern African Institute of Mining and Metallurgy*. Volume 115.
- Trides, T. Fitra, M. Anggriani, D. 2017. Rancangan Geometri Web Pilar dan Barrier Pilar Pada Metode Penambangan dengan Sistem Auger. Samarinda: *PROSIDING Seminar nasional Teknologi IV*. p 32-42
- Trides, T., Hakim, R.M. 2018. Kajian Geometri Barrier Pilar dan Web Pilar dengan Metode Auger Mining. Samarinda: *Jurnal GEOSAPTA Vol. 4*.
- Wyllie, Duncan C., dan Christopher W. Mah. 2004. *Rock Slope Engineering: Civil and Mining*. 4rd. (ed). New York: Spoon Press. London.
- Yurdakul, M., and Ceilan, C., Akdas, H., 2011. A Predictive Model for Uniaxial Compressive Strength of Carbonate Rocks from Schmidt Hardness. *American Rock Mechanics Association*, 11, p 1—7
- Zipf, R., K. 2005. *Ground Control Design for Highwall Mining*. SME Annual Meeting.

LAMPIRAN

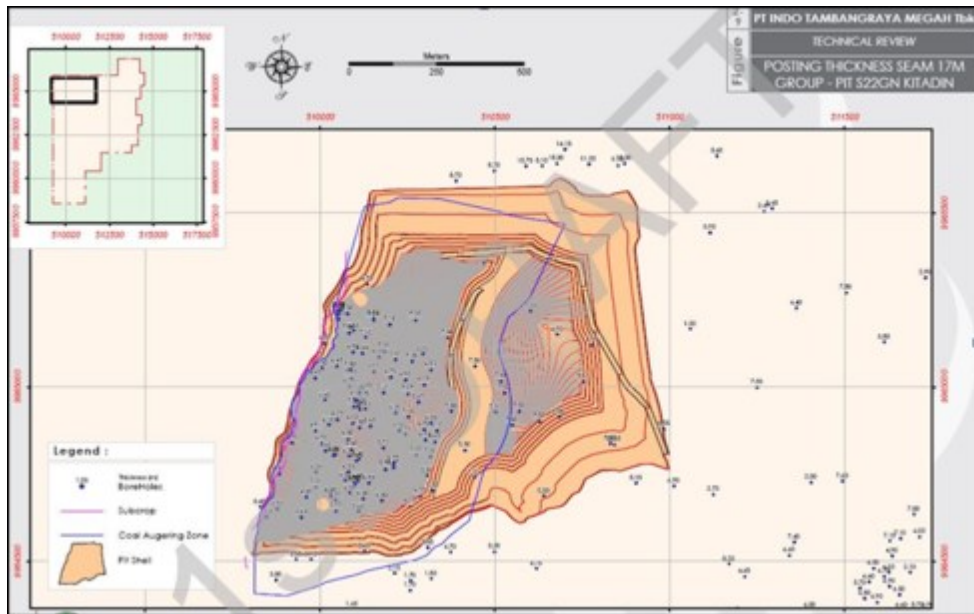
LAMPIRAN A
PETA IUP PT KITADIN

Lokasi IUP PT Kitadin

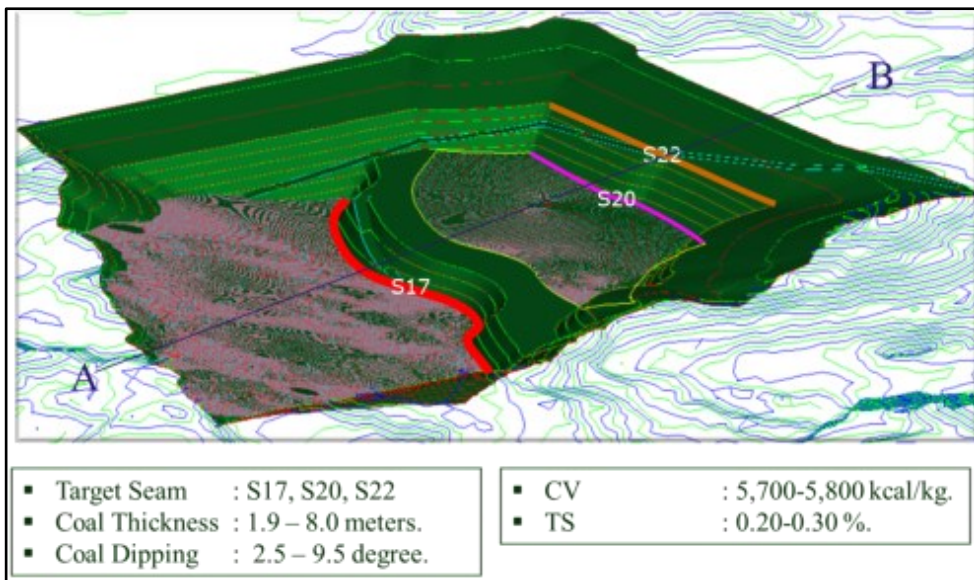


LAMPIRAN B
PENAMPANG PIT S22GN

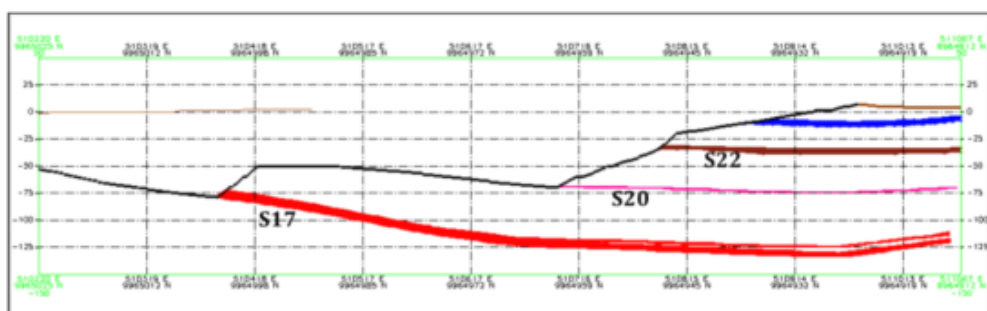
Distribusi titik bor pada Pit S22GN



Target seam untuk auger mining



Penampang melintang Pit S22GN



LAMPIRAN C
STATISTIK KETEBALAN LAPISAN BATUBARA

Statistik ketebalan lapisan batubara

Nama Seam	Split 1	Split 2	Jumlah Data	Ketebalan Batubara (m)		
				Rata-rata	Minimum	Maksimum
		22MA1	24	1.4	0.2	6.2
	22MA		244	1.8	0.1	8.2
		22MA2	24	1.5	0.2	4.2
22M			628	3.4	0.2	9.7
		22MB1	20	1.0	0.2	2.5
	22MB		250	1.8	0.1	8.4
		22MB2	20	1.2	0.2	6.0
	20MA		57	0.8	0.2	2.6
20M			763	1.2	0.1	4.6
	20MB		57	0.8	0.2	2.5
		17MA1	33	1.2	0.3	6.2
	17MA		422	2.0	0.1	8.2
		17MA2	33	2.0	0.2	9.3
17M			784	5.0	0.2	18.0
		17MB1	102	1.7	0.2	7.0
	17MB		387	2.4	0.1	11.5
		17MB2	101	1.6	0.2	9.3

LAMPIRAN D
HASIL UJI UCS

Hasil analisis Uji UCS

- Analisis laboratorium dilakukan oleh Laboratorium Geomekanik, ITB, Bandung
- Hasil analisis disimpulkan sebagai berikut;
 - UCS untuk *roof/floor* batubara bervariasi 2,41—5,99 MPa dan 1,31—3,78 MPa. Hal ini disebabkan jenis batuan yang bervariasi
 - UCS batubara *Seam* 17 adalah 4,06 MPa

Lithology	Compressive Strength (σ_c , Mpa)	Young's Modulus (E, Mpa)	Poisson's Ratio (ν)	Density (γ , t/m ³)
Carboneaceous/Coaly Shale	0.85	63.47	0.27	2.08
Clayey Siltstone	2.43	178.44	0.27	2.10
Claystone	0.63	63.47	0.27	2.17
Coal	4.06	1081.41	0.24	1.29
Sandy Siltstone	6.36	751.57	0.27	2.17
Siltstone	4.01	617.02	0.27	2.14
Silty Claystone	2.83	489.79	0.26	2.09
Silty Sandstone/Sandstone	4.19	516.83	0.24	2.30

LAMPIRAN E
LEMBAR KONSULTASI