

## DAFTAR PUSTAKA

- Abdul Kadir, Heriyanto. (2005). “ *Algoritma Pemrograman menggunakan C++* ”. Yogyakarta : ANDI.
- Al Fatta. H. (2007). “ *Analisis dan Perancangan Sistem Informasi* ”.Yogyakarta: ANDI
- Amsyah, Zulkifli. (2001). “ *Manajemen Informasi Sistem* ”. Jakarta : PT. Gramedia Pustaka Utama.
- Anitawati., Djamaris, Aurino., Mirsa Diah Novianti. (2016). *Analisis Kriteria Pemilihan Pemasok Menggunakan Analytic Network Process (Studi Kasus Pada PT. XYZ)*. Jakarta:Universitas Bakrie.
- Bagui, R. E. (2003). " *Oracle SQL For Secure relational Database* ". New York: Nova Science Publisher.
- Bazhin I.I.(2003). " *Logistics: CD tutorial* ". Kharkov: Kon-sum
- Bowersox, Donald J.(2006). " *Manajemen Logistik : Integrasi Sistem-Sistem Manajemen Distribusi Fisik dan Manajemen Material* " Penerbit Bumi Aksara, Jakarta
- David Johnson, Donald F. Wood, Daniel L. Vordlou Murphy Jr. Paul R.(2002) " *Modern Logistics, 7th edition* ". Williams Publishing house
- Fatansyah.(2012). " *Basis Data* ".Universitas Bina Sarana Informatika: Cengkareng
- Indarjani.(2009). " *Sistem Basis Data Dalam Paket Five In One* ".PT Alex Media Koputindo
- Jogiyanto.(2009). " *Analisis dan Desain Sistem Informasi* ".Yogyakarta: Andi.
- Kenneth C, Jane P. Laudon. (2004). " *Management Information Systems.15<sup>th</sup> edition* ".New York: Pearson

Kondratjev, J.(2015).”*Logistic. Transportation and Warehouse in Supply Chain*”.Centria University of Applied Sciences

Kozlovsky V.A, Kozlovsky E.A, Savruk N.T.( 2002) .”*Logistics Management: Textbook. 20<sup>th</sup> ed*”.Lan Publisher

Kapal feri. (n.d) Wikipedia. [https://id.wikipedia.org/wiki/kapal\\_feri](https://id.wikipedia.org/wiki/kapal_feri). (diakses 29 Agustus 2021)

Pujawan I dan Mahendrawati., (2010). *Supply Chain Management*. Surabaya: Guna Widya.

Rahmayanti, Reny. 2010. *Analisis Pemilihan Pemasok Menggunakan Metode Analytical Hierarchy Process (AHP)*. Surakarta:Universitas Sebelas Maret.

Richard Lee Storch, C. P. (1995). *SHIP PRODUCTION Second Edition*. Centreville, Maryland: Cornell Maritime Press.

Subagya M.S. Haji .(1944).”*Manajenen Logistik*”. Jakarta: Haji Masagung

Sutabri Tata. (2005). ”*Sistem Informasi Manajemen*”. Yogyakarta:Andi

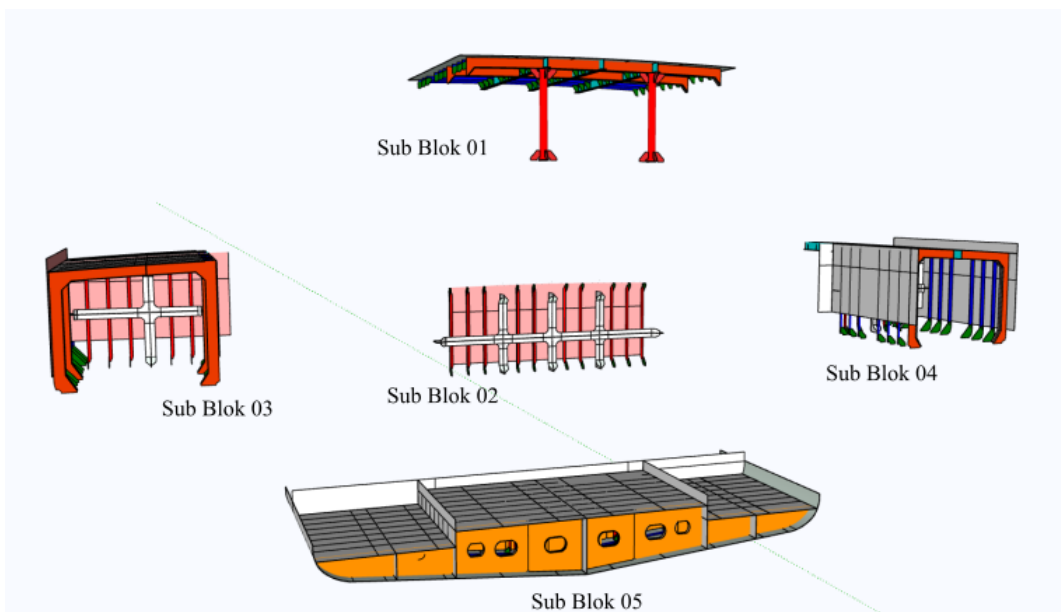
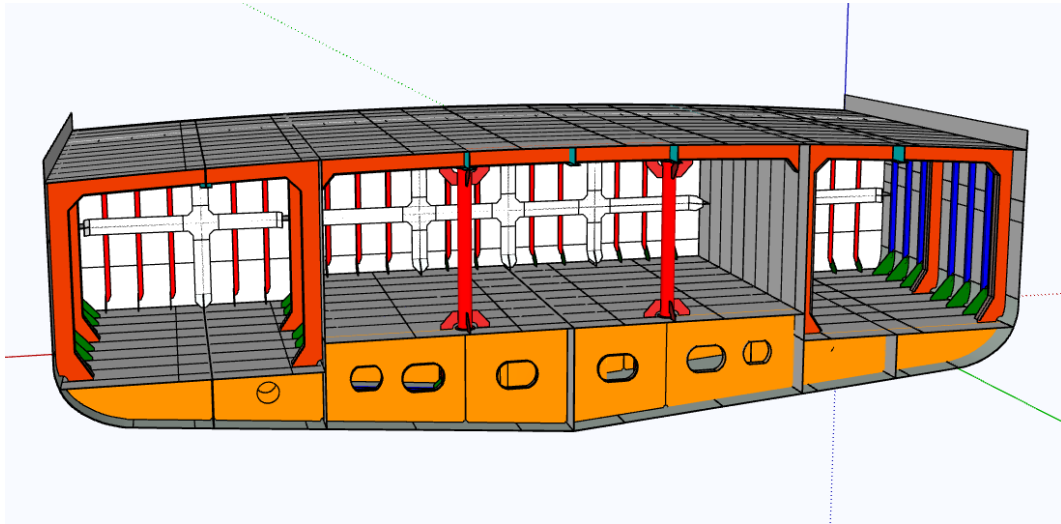
Waters D. 2007.” *Global Logistics - New directions in Supply chain Management, 5th edition.*” Kogan Page publishers

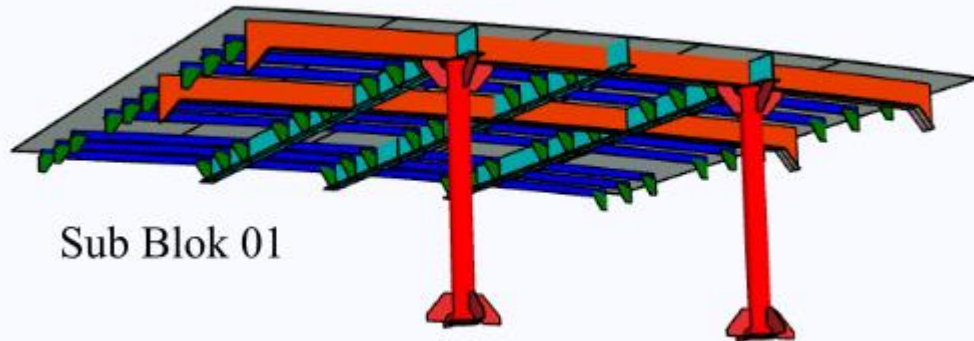
Widiyanesti, Sri., dan Retno S. (2012). “*Penentuan Kriteria Terpenting dalam Pemilihan Pemasok di Family Business dengan Menggunakan Pendekatan Analytical Hierarchy Process (AHP)*”. Bandung: Institut Manajemen Telkom.

Yakub. (2012). “*Pengantar Sistem Informasi*”. Yogyakarta : Graha Ilmu.

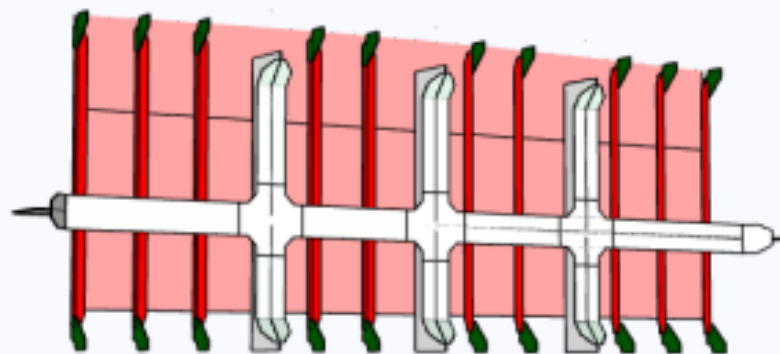
# LAMPIRAN

Blok HS4

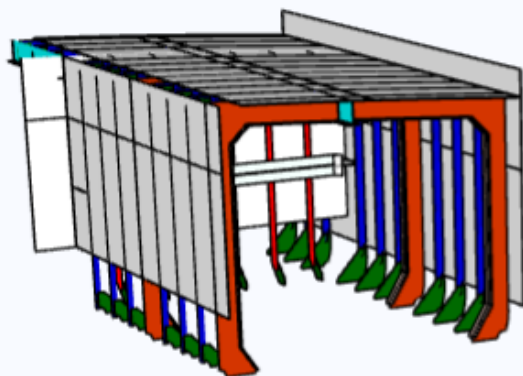




Sub Blok 01

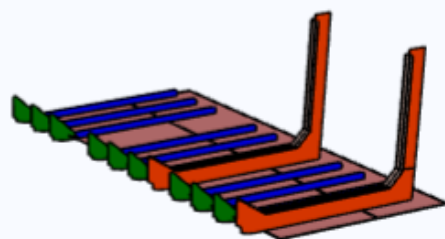


Sub Blok 02

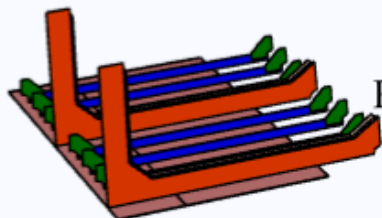


Sub Blok 03

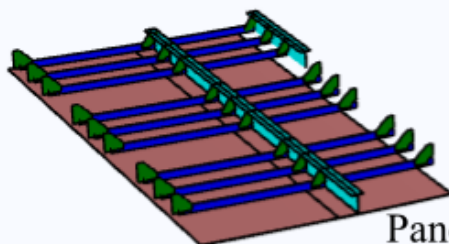
Panel 04



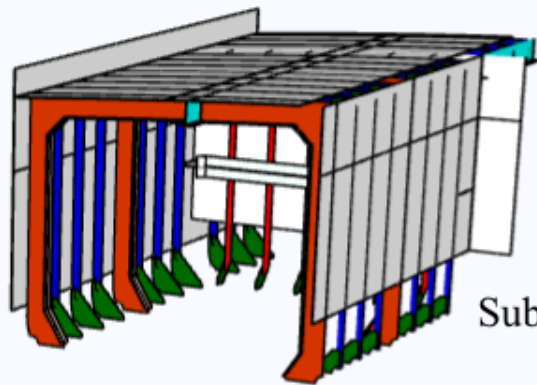
Panel 02



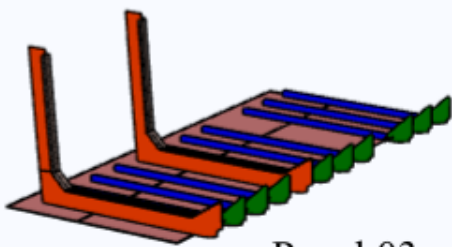
Panel 03



Panel 01



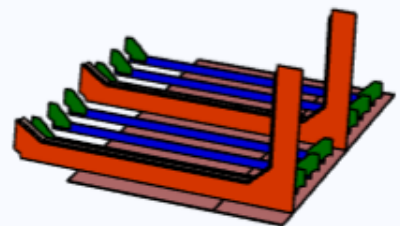
Sub Blok 04



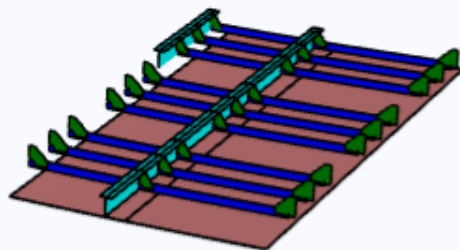
Panel 03



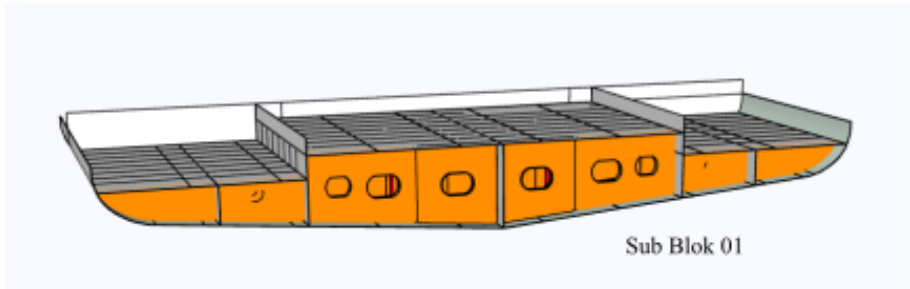
Panel 04



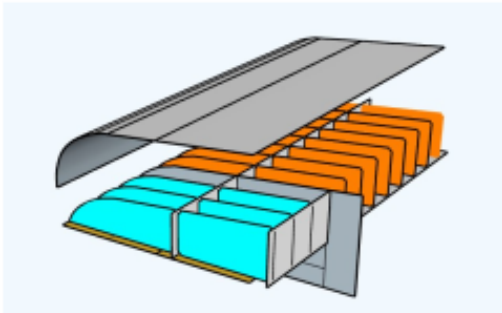
Panel 02



Panel 01



Panel 01



Panel 02

