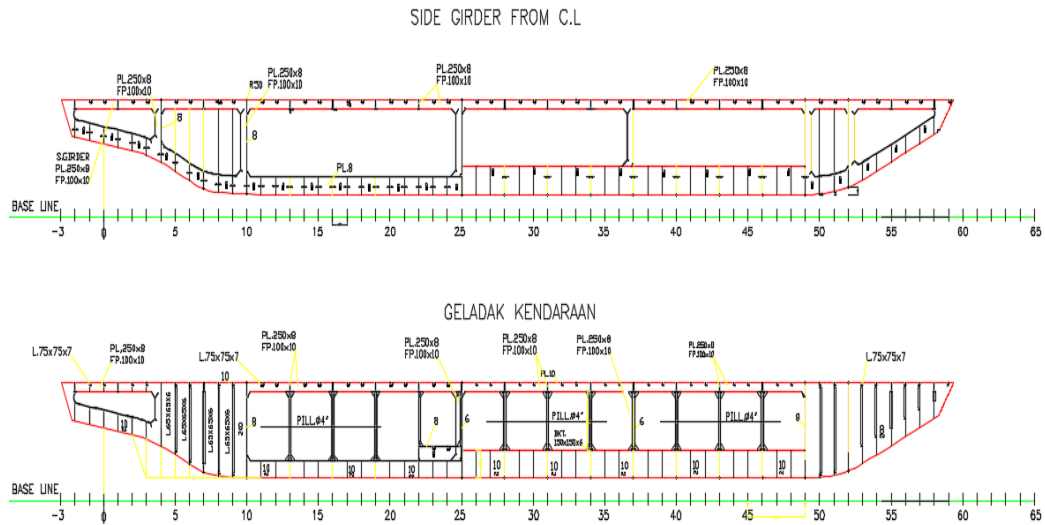


## DAFTAR PUSTAKA

- Alwan. (2020). “Perencanaan Jaringan Kerja Perakitan Blok Kamar Mesin Kapal Ferry Ro-Ro 750 Gt Terintegrasi Dengan Sistem Perpipaan Udara Tekan, Isi, Duga, Dan Udara, Serta Gas Buang”. Skripsi program strata satu Teknik Perkapalan Universitas Hasanuddin, Makassar.
- Biro Klasifikasi Indonesia. 2016. *Vol. VI Rules of Welding*
- Cahyanto, Syahril (2018). “Analisa Variasi Arus terhadap Hasil Welding Procedure Specification (WPS) dan Procedure Qualification Record (PQR) pada Pipa 6” sch 120 dengan Material Stainless Steel 307.” Other thesis, Politeknik Negeri Sriwijaya.
- Kobelco (2022). “Calculation of the Welding Consumables Consumption”.
- Mega, Adzan. (2018). “Perencanaan Kebutuhan Juru Las, Mesin Las Dan Elektroda Las Pada Perakitan Lambung Kapal Ferry 300 GT”. Skripsi program strata satu Teknik Perkapalan Universitas Hasanuddin, Makassar.
- Wahyuddin, 2011. Teknik Produksi Kapal. Program Studi Teknik Perkapalan, Universitas Hasanuddin, Makassar.

## LAMPIRAN

Lampiran 1. 1 Gambar Konstruksi Profil



Lampiran 1. 2 Tabel Hasil Perhitungan Berat Isian Las Tiap Tahap Pekerjaan Blok 06

PANEL 1 (INNER BOTTOM)								
NO	KOMPONEN	PANJANG ALUR PENGLASAN (m)		LUAS KAMPUH (m <sup>2</sup> )	VOLUME MATERIAL (m <sup>3</sup> )	BERAT MATERIAL (kg)	VOLUME LASAN	BERAT ELEKTRODA (kg)
		(1)	(2)	(3)	(4)=(3)X Berat jenis Baja	(5)=(1)*(2)	(6)=(5)*Berat Jenis Baja	
		mm	m	m <sup>2</sup>	m <sup>3</sup>	kg	m <sup>3</sup>	kg
1	Pelat (1) ~ Pelat (2)	9000	9.00	0.0000229	0.05656	887.992	0.0002061	1.617885
2	Pelat (2) ~ Pelat (3)	9000	9.00	0.0000229	0.0432	339.12	0.0002061	1.617885
3	Pelat (3) ~ Pelat (4)	8280	8.28	0.0000229	0.0432	339.12	0.000189612	1.4884542
4	Pelat (5) ~ Pelat (6)	1980	1.98	0.0000229	0.012728	99.9148	0.000045342	0.3559347
5	Pelat (1,2,3,4) ~ Pelat (5,6)	9330	9.33	0.0000229	-	-	0.000213657	1.67720745
6	Pelat (5,6) ~ Pelat (7)	5050	5.05	0.0000229	0.0069144	54.27804	0.000115645	0.90781325
7	Pelat (7) ~ Pelat (8)	3600	3.60	0.0000229	0.00616	48.356	0.00008244	0.647154
6	Center girder ~ Plat (2,5,7,8)	1920	1.92	0.000008	0.03456	271.296	0.00001536	0.120576
<b>TOTAL</b>			<b>48.16</b>	<b>0.0001683</b>		<b>2040.07684</b>	<b>0.001074256</b>	<b>8.4329096</b>

PANEL 2 (WRANG)								
NO	KOMPONEN	PANJANG ALUR PENGELASAN		LUAS KAMPUH	VOLUME MATERIAL	BERAT MATERIAL (kg	VOLUME	BERAT ELEKTRODA
		(1)		(2)	(3)	(4)=(3)XBerat Jenis Baja	(5)=(1)x(2)	(6)=(5)XBerat Jenis Baja
		mm	m	m <sup>2</sup>	m <sup>3</sup>	kg	m <sup>3</sup>	kg
1	POF-B06-44-PS	-	-	-	0.371900096	20.43591025	-	-
2	POF-B06-45-PS	-	-	-	0.365260389	20.07105835	-	-
3	PSF-B06-46-PS	-	-	-	1.14328	71.797984	-	-
4	PSF-B06-47-PS	-	-	-	0.955252217	59.98983922	-	-
5	PSF-B06-48-PS	-	-	-	0.770890181	48.41190339	-	-
6	PWF-B06-49-PS	-	-	-	0.662548408	41.60804002	-	-
7	PWF-B06-50-PS	-	-	-	0.202631352	12.72524889	-	-
8	PWF-B06-51-PS	-	-	-	0.124199003	7.799697376	-	-
9	PWF-B06-52-PS	-	-	-	0.146901907	9.225439741	-	-
10	POF-B06-44-2PS	-	-	-	0.228939911	12.58024809	-	-
11	POF-B06-45-2PS	-	-	-	0.477521566	26.23981006	-	-
12	POF-B06-44-SS	-	-	-	0.371900096	20.43591025	-	-
13	POF-B06-45-SS	-	-	-	0.365260389	20.07105835	-	-
14	PSF-B06-46-SS	-	-	-	1.14328	71.797984	-	-
15	PSF-B06-47-SS	-	-	-	0.955252217	59.98983922	-	-
16	PSF-B06-48-SS	-	-	-	0.770890181	48.41190339	-	-
17	PWF-B06-49-SS	-	-	-	0.662548408	41.60804002	-	-
18	PWF-B06-50-SS	-	-	-	0.202631352	12.72524889	-	-
19	PWF-B06-51-SS	-	-	-	0.124199003	7.799697376	-	-
20	PWF-B06-52-SS	-	-	-	0.146901907	9.225439741	-	-
21	POF-B06-44-2SS	-	-	-	0.228939911	12.58024809	-	-
22	POF-B06-45-2SS	-	-	-	0.477521566	26.23981006	-	-
23	GA-B06-44-PS ~ POF-B06-44-1PS	306	0.306	0.0000045	0.0013727	10.775695	0.000001377	0.01080945
24	GA-B06-44-PS ~ POF-B06-44-2PS	344	0.344	0.0000045	-	-	0.000001548	0.0121518
25	GA-B06-45-PS ~ POF-B06-45-1PS	364	0.364	0.0000045	0.0013846	10.86911	0.000001638	0.0128583
26	GA-B06-45-2PS ~ POF-B06-45-2PS	358	0.358	0.0000045	-	-	0.000001611	0.01264635
27	GB-B06-44-PS ~ POF-B06-44-1PS	364	0.364	0.0000045	0.00151459	11.8895315	0.000001638	0.0128583
28	GB-B06-44-2PS ~ POF-B06-44-2PS	374	0.374	0.0000045	-	-	0.000001683	0.01321155
29	GB-B06-45-PS ~ POF-B06-45-1PS	384	0.384	0.0000045	0.00151459	11.8895315	0.000001728	0.0135648
30	GB-B06-45-2PS ~ POF-B06-45-2PS	389	0.389	0.0000045	-	-	1.7505E-06	0.013741425
31	BCB-B06-44-PS ~ GA-B06-44-1PS	236	0.236	0.0000045	0.00050309	3.9492565	0.000001062	0.0083367
32	BCB-B06-44-2PS ~ GA-B06-44-2PS	236	0.236	0.0000045	0.00050309	3.9492565	0.000001062	0.0083367
33	BCB-B06-45-PS ~ GA-B06-45-1PS	236	0.236	0.0000045	0.00050309	3.9492565	0.000001062	0.0083367
34	BCB-B06-45-2PS ~ GA-B06-45-2PS	236	0.236	0.0000045	0.00050309	3.9492565	0.000001062	0.0083367
35	STF-B06-44-PS ~ BCB-B06-44-1PS	132	0.132	0.0000045	0.0001701	1.335285	0.000000594	0.0046629
36	STF-B06-44-2PS ~ BCB-B06-44-2PS	132	0.132	0.0000045	0.0001575	1.236375	0.000000594	0.0046629
37	STF-B06-45-PS ~ BCB-B06-45-1PS	132	0.132	0.0000045	0.0002009	1.577065	0.000000594	0.0046629
38	STF-B06-45-2PS ~ BCB-B06-45-2PS	132	0.132	0.0000045	0.00013839	1.0863615	0.000000594	0.0046629
39	BCB-B06-44-PS ~ GB-B06-44-1PS	132	0.132	0.0000045	0.00050309	3.9492565	0.000000594	0.0046629
40	BCB-B06-44-2PS ~ GB-B06-44-2PS	132	0.132	0.0000045	0.00050309	3.9492565	0.000000594	0.0046629
41	BCB-B06-45-PS ~ GB-B06-45-1PS	132	0.132	0.0000045	0.00050309	3.9492565	0.000000594	0.0046629
42	BCB-B06-45-2PS ~ GB-B06-45-2PS	132	0.132	0.0000045	0.00050309	3.9492565	0.000000594	0.0046629
43	GA-B06-44-SS ~ POF-B06-44-1SS	350	0.35	0.0000045	0.0013727	10.775695	0.000001575	0.01236375
44	GA-B06-44-2SS ~ POF-B06-44-2SS	344	0.344	0.0000045	-	-	0.000001548	0.0121518
45	GA-B06-45-SS ~ POF-B06-45-1SS	364	0.364	0.0000045	0.0013846	10.86911	0.000001638	0.0128583
46	GA-B06-45-2SS ~ POF-B06-45-2SS	358	0.358	0.0000045	-	-	0.000001611	0.01264635
47	GB-B06-44-SS ~ POF-B06-44-1SS	364	0.364	0.0000045	0.00151459	11.8895315	0.000001638	0.0128583
48	GB-B06-44-2SS ~ POF-B06-44-2SS	374	0.374	0.0000045	-	-	0.000001683	0.01321155
49	GB-B06-45-SS ~ POF-B06-45-1SS	384	0.384	0.0000045	0.00151459	11.8895315	0.000001728	0.0135648
50	GB-B06-45-2SS ~ POF-B06-45-2SS	389	0.389	0.0000045	-	-	1.7505E-06	0.013741425
51	BCB-B06-44-SS ~ GA-B06-44-1SS	236	0.236	0.0000045	0.00050309	3.9492565	0.000001062	0.0083367
52	BCB-B06-44-2SS ~ GA-B06-44-2SS	236	0.236	0.0000045	0.00050309	3.9492565	0.000001062	0.0083367
53	BCB-B06-45-SS ~ GA-B06-45-1SS	236	0.236	0.0000045	0.00050309	3.9492565	0.000001062	0.0083367
54	BCB-B06-45-2SS ~ GA-B06-45-2SS	236	0.236	0.0000045	0.00050309	3.9492565	0.000001062	0.0083367
55	STF-B06-44-SS ~ BCB-B06-44-1SS	132	0.132	0.0000045	0.0001701	1.335285	0.000000594	0.0046629
56	STF-B06-44-2SS ~ BCB-B06-44-2SS	132	0.132	0.0000045	0.0001575	1.236375	0.000000594	0.0046629
57	STF-B06-45-SS ~ BCB-B06-45-1SS	132	0.132	0.0000045	0.0002009	1.577065	0.000000594	0.0046629
58	STF-B06-45-2SS ~ BCB-B06-45-2SS	132	0.132	0.0000045	0.00013839	1.0863615	0.000000594	0.0046629
59	BCB-B06-44-SS ~ GB-B06-44-1SS	132	0.132	0.0000045	0.00050309	3.9492565	0.000000594	0.0046629
60	BCB-B06-44-2SS ~ GB-B06-44-2SS	132	0.132	0.0000045	0.00050309	3.9492565	0.000000594	0.0046629
61	BCB-B06-45-SS ~ GB-B06-45-1SS	132	0.132	0.0000045	0.00050309	3.9492565	0.000000594	0.0046629
62	BCB-B06-45-2SS ~ GB-B06-45-2SS	132	0.132	0.0000045	0.00050309	3.9492565	0.000000594	0.0046629
63	STF-B06-44-PS	-	-	-	0.04902	2.693649	-	-
64	STF-B06-44-2PS	-	-	-	0.039615	2.17684425	-	-
65	STF-B06-45-PS	-	-	-	0.030548	1.6786126	-	-
66	STF-B06-45-2PS	-	-	-	0.0323	1.774885	-	-
67	STF-B06-44-SS	-	-	-	0.04902	2.693649	-	-
68	STF-B06-44-2SS	-	-	-	0.039615	2.17684425	-	-
69	STF-B06-45-SS	-	-	-	0.030548	1.6786126	-	-
70	STF-B06-45-2SS	-	-	-	0.0323	1.774885	-	-
<b>TOTAL</b>			<b>9.81</b>	<b>0.00018</b>		<b>842.9243535</b>	<b>0.000044145</b>	<b>0.34653825</b>

PANEL 3 (BOTTOM PLATE)						
NO	KOMPONEN	PANJANG ALUR PENGELASAN (m)	LUAS KAMPUH (m <sup>2</sup> )	BERAT MATERIAL (kg)	VOLUME (m <sup>3</sup> )	BERAT ELEKTRODA
		(1)	(2)	(3)	(4)	(5)
1	PK-B06 ~ PAB-B06-1PS ~ PAB-B06-1SS	7.371	6.35225E-05	922.6740348	0.000468224	3.675561128
2	PAB-B06-1PS ~ PAB-B06-2PS	4.912	0.00004531	269.2935942	0.000222563	1.747117352
3	PAB-B06-2PS ~ PAB-B06-3PS	4.866	0.00004531	270.1875573	0.000220478	1.730755911
4	PAB-B06-1SS ~ PAB-B06-2SS	4.912	0.00004531	269.2935942	0.000222563	1.747117352
5	PAB-B06-2SS ~ PAB-B06-3SS	4.866	0.00004531	270.1875573	0.000220478	1.730755911
	<b>TOTAL</b>	<b>26.927</b>	<b>0.000244763</b>	<b>2001.636338</b>	<b>0.001354307</b>	<b>10.63130765</b>

PANEL 4 (SIDE SHELL)						
NO	KOMPONEN	PANJANG ALUR PENGELASAN (m)	LUAS KAMPUH (m <sup>2</sup> )	BERAT MATERIAL (kg)	VOLUME (m <sup>3</sup> )	BERAT ELEKTRODA
		(1)	(2)	(3)	(4)	(5)
1	PSS-B06-1PS ~ PSS-B06-2PS	4.83	0.0000229	459.2655933	0.000110607	0.86826495
2	WFB-B06-46-PS ~ WFB-B06-46-PS	1.808	0.0000045	42.3910676	0.000008136	0.0638676
3	WF-B06-46-PS ~ PSS-B06-1PS,2PS	2.271	0.0000045	-	1.02195E-05	0.080223075
4	MF-B06-44-PS ~ PSS-B06-1PS,2PS	2.36	0.0000045	9.4648078	0.00001062	0.083367
5	MF-B06-45-PS ~ PSS-B06-1PS,2PS	2.369	0.0000045	8.63731575	1.06605E-05	0.083684925
6	MF-B06-47-PS ~ PSS-B06-1PS,2PS	2.166	0.0000045	7.86691675	0.000009747	0.07651395
7	MF-B06-48-PS ~ PSS-B06-1PS,2PS	2.085	0.0000045	7.5371618	9.3825E-06	0.073652625
8	MF-B06-50-PS ~ PSS-B06-1PS,2PS	2.061	0.0000045	7.45644025	9.2745E-06	0.072804825
9	MF-B06-51-PS ~ PSS-B06-1PS,2PS	2.064	0.0000045	7.48402515	0.000009288	0.0729108
10	TB-B06-49-PS ~ PSS-B06-1PS,2PS	2.048	0.0000045	413.0852748	0.000009216	0.0723456
11	TB-B06-52-PS ~ PSS-B06-1PS,2PS	2.036	0.0000045	342.4410524	0.000009162	0.0719217
12	STFB-B06-49-1PS ~ TB-B06-49-PS	1.812	0.0000045	9.95694	0.000008154	0.0640089
13	STFB-B06-49-2PS ~ TB-B06-49-PS	1.981	0.0000045	6.43755735	8.9145E-06	0.069978825
14	STFB-B06-49-3PS ~ TB-B06-49-PS	1.966	0.0000045	6.38667365	0.000008847	0.06944895
15	STFB-B06-49-4PS ~ TB-B06-49-PS	1.791	0.0000045	5.8122813	8.0595E-06	0.063267075
16	STFB-B06-49-5PS ~ TB-B06-49-PS	1.399	0.0000045	4.517989	6.2955E-06	0.049419675
17	STFB-B06-49-6PS ~ TB-B06-49-PS	1.072	0.0000045	3.44080415	0.000004824	0.0378684
18	STFB-B06-49-7PS ~ TB-B06-49-PS	0.771	0.0000045	2.44862695	3.4695E-06	0.027235575
19	STFB-B06-52-1PS ~ TB-B06-52-PS	1.895	0.0000045	4.7912004	8.5275E-06	0.066940875
20	STFB-B06-52-2PS ~ TB-B06-52-PS	1.981	0.0000045	6.43755735	8.9145E-06	0.069978825
21	STFB-B06-52-3PS ~ TB-B06-52-PS	1.691	0.0000045	5.48076795	7.6095E-06	0.059734575
22	STFB-B06-52-4PS ~ TB-B06-52-PS	1.34	0.0000045	4.3235759	0.00000603	0.0473355
23	STFB-B06-52-5PS ~ TB-B06-52-PS	1.052	0.0000045	3.3743696	0.000004734	0.0371619
24	STFB-B06-52-6PS ~ TB-B06-52-PS	0.792	0.0000045	2.51687485	0.000003564	0.0279774
25	STFB-B06-52-7PS ~ TB-B06-52-PS	0.477	0.0000045	1.47853965	2.1465E-06	0.016850025
26	PSS-B06-1SS ~ PSS-B06-2SS	4.83	0.0000229	459.2655933	0.000110607	0.86826495
27	WFB-B06-46-SS ~ WFB-B06-46-SS	1.808	0.0000045	42.3910676	0.000008136	0.0638676
28	WF-B06-46-SS ~ PSS-B06-1SS,2SS	2.271	0.0000045	-	1.02195E-05	0.080223075
29	MF-B06-44-SS ~ PSS-B06-1SS,2SS	2.36	0.0000045	9.4648078	0.00001062	0.083367
30	MF-B06-45-SS ~ PSS-B06-1SS,2SS	2.369	0.0000045	8.63731575	1.06605E-05	0.083684925
31	MF-B06-47-SS ~ PSS-B06-1SS,2SS	2.166	0.0000045	7.86691675	0.000009747	0.07651395
32	MF-B06-48-SS ~ PSS-B06-1SS,2SS	2.085	0.0000045	7.5371618	9.3825E-06	0.073652625
33	MF-B06-50-SS ~ PSS-B06-1SS,2SS	2.061	0.0000045	7.45644025	9.2745E-06	0.072804825
34	MF-B06-51-SS ~ PSS-B06-1SS,2SS	2.064	0.0000045	7.48402515	0.000009288	0.0729108
35	TB-B06-49-SS ~ PSS-B06-1SS,2SS	2.048	0.0000045	413.0852748	0.000009216	0.0723456
36	TB-B06-52-SS ~ PSS-B06-1SS,2SS	2.036	0.0000045	342.4410524	0.000009162	0.0719217
37	STFB-B06-49-1SS ~ TB-B06-49-SS	1.812	0.0000045	9.95694	0.000008154	0.0640089
38	STFB-B06-49-2SS ~ TB-B06-49-SS	1.981	0.0000045	6.43755735	8.9145E-06	0.069978825
39	STFB-B06-49-3SS ~ TB-B06-49-SS	1.966	0.0000045	6.38667365	0.000008847	0.06944895
40	STFB-B06-49-4SS ~ TB-B06-49-SS	1.791	0.0000045	5.8122813	8.0595E-06	0.063267075
41	STFB-B06-49-5SS ~ TB-B06-49-SS	1.399	0.0000045	4.517989	6.2955E-06	0.049419675
42	STFB-B06-49-6SS ~ TB-B06-49-SS	1.072	0.0000045	3.44080415	0.000004824	0.0378684
43	STFB-B06-49-7SS ~ TB-B06-49-SS	0.771	0.0000045	2.44862695	3.4695E-06	0.027235575
44	STFB-B06-52-1SS ~ TB-B06-52-SS	1.895	0.0000045	4.7912004	8.5275E-06	0.066940875
45	STFB-B06-52-2SS ~ TB-B06-52-SS	1.981	0.0000045	6.43755735	8.9145E-06	0.069978825
46	STFB-B06-52-3SS ~ TB-B06-52-SS	1.691	0.0000045	5.48076795	7.6095E-06	0.059734575
47	STFB-B06-52-4SS ~ TB-B06-52-SS	1.34	0.0000045	4.3235759	0.00000603	0.0473355
48	STFB-B06-52-5SS ~ TB-B06-52-SS	1.052	0.0000045	3.3743696	0.000004734	0.0371619
49	STFB-B06-52-6SS ~ TB-B06-52-SS	0.792	0.0000045	2.51687485	0.000003564	0.0279774
50	STFB-B06-52-7SS ~ TB-B06-52-SS	0.477	0.0000045	1.47853965	2.1465E-06	0.016850025
	<b>TOTAL</b>	<b>92.236</b>	<b>0.0002618</b>	<b>2746.066827</b>	<b>0.000592806</b>	<b>4.6535271</b>

PANEL 5 (BULKHEAD)						
NO	KOMPONEN	PANJANG ALUR PENGLASAN (m)	LUAS KAMPUH (m <sup>2</sup> )	BERAT MATERIAL (kg)	VOLUME (m <sup>3</sup> )	BERAT ELEKTRODA
		(1)	(2)	(3)	(4)	(5)
1	Wfb-B06-46-PS ~ WFl-B06-46-PS	1.584	0.000008	29.90966965	0.000012672	0.0994752
2	Wfb-B06-46-SS ~ WFl-B06-46-SS	1.584	0.000008	29.90966965	0.000012672	0.0994752
3	MF-B06-44-PS ~ PLB-B06-PS	1.901	0.0000045	6.2643	8.5545E-06	0.067152825
4	MF-B06-45-PS ~ PLB-B06-PS	1.901	0.0000045	6.2643	8.5545E-06	0.067152825
5	MF-B06-47-PS ~ PLB-B06-PS	1.901	0.0000045	6.2643	8.5545E-06	0.067152825
6	MF-B06-48-PS ~ PLB-B06-PS	1.901	0.0000045	6.2643	8.5545E-06	0.067152825
7	MF-B06-44-SS ~ PLB-B06-SS	1.901	0.0000045	6.2643	8.5545E-06	0.067152825
8	MF-B06-45-SS ~ PLB-B06-SS	1.901	0.0000045	6.2643	8.5545E-06	0.067152825
9	MF-B06-47-SS ~ PLB-B06-SS	1.901	0.0000045	6.2643	8.5545E-06	0.067152825
10	MF-B06-48-SS ~ PLB-B06-SS	1.901	0.0000045	6.2643	8.5545E-06	0.067152825
11	WF-B06-46-PS ~ PLB-B06-PS	2.046	0.000008	29.90966965	0.000016368	0.1284888
12	WF-B06-46-SS ~ PLB-B06-SS	2.046	0.000008	29.90966965	0.000016368	0.1284888
	<b>TOTAL</b>	<b>22.468</b>	<b>0.000068</b>	<b>169.7530786</b>	<b>0.000126516</b>	<b>0.9931506</b>

PANEL 6 (DECK)						
NO	KOMPONEN	PANJANG ALUR PENGLASAN (m)	LUAS KAMPUH (m <sup>2</sup> )	BERAT MATERIAL (kg)	VOLUME (m <sup>3</sup> )	BERAT ELEKTRODA
		(1)	(2)	(3)	(4)	(5)
1	PD-B06-1 ~ PD-B06-2	4.8	4.82902E-05	1356.48	0.000231793	1.819574736
2	PD-B06-2 ~ PD-B06-3	4.8	4.82902E-05	678.24	0.000231793	1.819574736
3	PD-B06-3 ~ PD-B06-4	4.8	4.82902E-05	678.24	0.000231793	1.819574736
4	PD-B06-4 ~ PD-B06-5	4.8	4.82902E-05	1356.48	0.000231793	1.819574736
5	GTDBb-B06-46-1PS ~ GTDBh-B06-46-1PS	1.982	0.000008	42.7787948	0.000015856	0.1244696
6	GTDBb-B06-46-2PS ~ GTDBh-B06-46-2PS	2.947	0.000008	61.7916832	0.000023576	0.1850716
7	GTDB-B06-46-1PS ~ GTDB-B06-46-2PS	0.52	0.000008	-	0.00000416	0.032656
8	GTDB-B06-46-1PS ~ PD-B06	1.884	0.0000045	-	0.000008478	0.0665523
9	GTDB-B06-46-2PS ~ PD-B06	2.561	0.0000045	-	1.15245E-05	0.090467325
10	TDB-B06-44-1PS ~ PD-B06	2.364	0.0000045	9.7314252	0.000010638	0.0835083
11	TDB-B06-44-2PS ~ PD-B06	2.32	0.0000045	8.35915885	0.00001044	0.081954
12	TDB-B06-45-1PS ~ PD-B06	2.152	0.0000045	8.8699191	0.000009684	0.0760194
13	TDB-B06-45-2PS ~ PD-B06	2.137	0.0000045	8.8105731	9.6165E-06	0.075489525
14	TDB-B06-47-1PS ~ PD-B06	1.582	0.0000045	5.914818	0.000007119	0.05588415
15	TDB-B06-47-2PS ~ PD-B06	2.659	0.0000045	10.9590082	1.19655E-05	0.093929175
16	TDB-B06-48-1PS ~ PD-B06	1.322	0.0000045	5.45153455	0.000005949	0.04669965
17	TDB-B06-48-2PS ~ PD-B06	2.881	0.0000045	11.8734861	1.29645E-05	0.101771325
18	TDB-B06-50-1PS ~ PD-B06	4.14	0.0000045	17.0660413	0.00001863	0.1462455
19	TDB-B06-51-1PS ~ PD-B06	4.041	0.0000045	16.65781775	1.81845E-05	0.142748325
20	LTDGb-B06-1 ~ LTDGh-B06-1	3	0.000008	0.00006594	0.000024	0.1884
21	LTDGb-B06-2 ~ LTDGh-B06-2	1.2	0.000008	0.000026376	0.0000096	0.07536
22	LTDG-B06-1 ~ PD-B06	3	0.000008	-	0.000024	0.1884
23	LTDG-B06-2 ~ PD-B06	1.2	0.000008	-	0.0000096	0.07536
24	GTDBb-B06-46-1PS ~ GTDBh-B06-46-1PS	1.982	0.0000045	42.7787948	0.000008919	0.07001415
25	GTDBb-B06-46-2PS ~ GTDBh-B06-46-2PS	2.947	0.0000045	61.7916832	1.32615E-05	0.104102775
26	GTDB-B06-46-1PS ~ GTDB-B06-46-2PS	0.52	0.0000045	-	0.00000234	0.018369
27	GTDB-B06-46-1PS ~ PD-B06	1.884	0.0000045	-	0.000008478	0.0665523
28	GTDB-B06-46-2PS ~ PD-B06	2.561	0.0000045	-	1.15245E-05	0.090467325
29	TDB-B06-44-1PS ~ PD-B06	2.364	0.0000045	9.7314252	0.000010638	0.0835083
30	TDB-B06-44-2PS ~ PD-B06	2.32	0.0000045	8.35915885	0.00001044	0.081954
31	TDB-B06-45-1PS ~ PD-B06	2.152	0.0000045	8.8699191	0.000009684	0.0760194
32	TDB-B06-45-2PS ~ PD-B06	2.137	0.0000045	8.8105731	9.6165E-06	0.075489525
33	TDB-B06-47-1PS ~ PD-B06	1.582	0.0000045	5.914818	0.000007119	0.05588415
34	TDB-B06-47-2PS ~ PD-B06	2.659	0.0000045	10.9590082	1.19655E-05	0.093929175
35	TDB-B06-48-1PS ~ PD-B06	1.322	0.0000045	5.45153455	0.000005949	0.04669965
36	TDB-B06-48-2PS ~ PD-B06	2.881	0.0000045	11.8734861	1.29645E-05	0.101771325
37	TDB-B06-50-1PS ~ PD-B06	4.14	0.0000045	17.0660413	0.00001863	0.1462455
38	TDB-B06-51-1PS ~ PD-B06	4.041	0.0000045	16.65781775	1.81845E-05	0.142748325
	<b>TOTAL</b>	<b>98.584</b>	<b>0.000370661</b>	<b>4485.968613</b>	<b>0.001332871</b>	<b>10.46304002</b>

SUB ASSEMBLY 1 (SUB BLOCK BOTTOM)						
NO	KOMPONEN	PANJANG ALUR PENGELASAN (m)	LUAS KAMPUH (m <sup>2</sup> )	BERAT MATERIAL (kg)	VOLUME (m <sup>3</sup> )	BERAT ELEKTRODA
		(1)	(2)	(3)	(4)	(5)
1	CG-B06 ~ PK-B06-PS, PK-B06-SS	19.2	0.000008	-	0.0001536	1.20576
2	POF-B06-44-1PS ~ CG-B06	0.8	0.0000045	-	0.0000036	0.02826
3	POF-B06-44-1PS ~ PAB-B06	0.299	0.0000045	-	1.3455E-06	0.010562175
4	POF-B06-44-1PS ~ PIB-B06	0.296	0.0000045	-	0.000001332	0.0104562
5	GB-B06-44-PS ~ PIB-B06	1.774	0.0000045	-	0.000007983	0.06266655
6	POF-B06-44-2PS ~ PIB-B06	0.688	0.0000045	-	0.000003096	0.0243036
7	POF-B06-44-2PS ~ PAB-B06	0.804	0.0000045	-	0.000003618	0.0284013
8	POF-B06-44-1PS ~ PK-B06	0.299	0.0000045	-	1.3455E-06	0.010562175
9	GA-B06-44 ~ PAB-B06	1.1815	0.0000045	-	5.31675E-06	0.041736488
10	POF-B06-45-1PS ~ CG-B06	0.8	0.0000045	-	0.0000036	0.02826
11	POF-B06-45-1PS ~ PAB-B06	0.299	0.0000045	-	1.3455E-06	0.010562175
12	POF-B06-45-1PS ~ PIB-B06	0.287	0.0000045	-	1.2915E-06	0.010138275
13	GB-B06-45-PS ~ PIB-B06	1.774	0.0000045	-	0.000007983	0.06266655
14	POF-B06-45-2PS ~ PIB-B06	0.438	0.0000045	-	0.000001971	0.01547235
15	POF-B06-45-1PS ~ PK-B06	0.291	0.0000045	-	1.3095E-06	0.010279575
16	GA-B06-45 ~ PAB-B06	1.847	0.0000045	-	8.3115E-06	0.065245275
17	POF-B06-45-2PS ~ PAB-B06	0.52	0.0000045	-	0.00000234	0.018369
18	PSF-B06-46-PS ~ CG-B06	0.799	0.0000045	-	3.5955E-06	0.028224675
19	PSF-B06-46-PS ~ PIB-B06	2.331	0.0000045	-	1.04895E-05	0.082342575
20	PSF-B06-46-PS ~ PAB-B06	2.496	0.0000045	-	0.000011232	0.0881712
21	PSF-B06-47-PS ~ CG-B06	0.799	0.0000045	-	3.5955E-06	0.028224675
22	PSF-B06-47-PS ~ PIB-B06	2.072	0.0000045	-	0.000009324	0.0731934
23	PSF-B06-47-PS ~ PAB-B06	2.242	0.0000045	-	0.000010089	0.07919865
24	PSF-B06-48-PS ~ CG-B06	0.798	0.0000045	-	0.000003591	0.02818935
25	PSF-B06-48-PS ~ PIB-B06	1.813	0.0000045	-	8.1585E-06	0.064044225
26	PSF-B06-48-PS ~ PAB-B06	1.991	0.0000045	-	8.9595E-06	0.070332075
27	PWF-B06-49-PS ~ CG-B06	0.793	0.0000045	-	3.5685E-06	0.028012725
28	PWF-B06-49-PS ~ PIB-B06	1.551	0.0000045	-	6.9795E-06	0.054789075
29	PWF-B06-49-PS ~ PAB-B06	1.744	0.0000045	-	0.000007848	0.0616068
30	PWF-B06-50-PS ~ CG-B06	0.497	0.0000045	-	2.2365E-06	0.017556525
31	PWF-B06-50-PS ~ PIB-B06	0.837	0.0000045	-	3.7665E-06	0.029567025
32	PWF-B06-50-PS ~ PAB-B06	0.973	0.0000045	-	4.3785E-06	0.034371225
33	PWF-B06-51-PS ~ CG-B06	0.434	0.0000045	-	0.000001953	0.01533105
34	PWF-B06-51-PS ~ PIB-B06	0.595	0.0000045	-	2.6775E-06	0.021018375
35	PWF-B06-51-PS ~ PAB-B06	0.736	0.0000045	-	0.000003312	0.0259992
36	PWF-B06-52-PS ~ CG-B06	0.496	0.0000045	-	0.000002232	0.0175212
37	PWF-B06-52-PS ~ PIB-B06	0.627	0.0000045	-	2.8215E-06	0.022148775
38	PWF-B06-52-PS ~ PAB-B06	0.8	0.0000045	-	0.0000036	0.02826
39	POF-B06-44-1SS ~ CG-B06	0.8	0.0000045	-	0.0000036	0.02826
40	POF-B06-44-1SS ~ PAB-B06	0.299	0.0000045	-	1.3455E-06	0.010562175
41	POF-B06-44-1SS ~ PIB-B06	0.296	0.0000045	-	0.000001332	0.0104562
42	GB-B06-44 ~ PIB-B06	1.774	0.0000045	-	0.000007983	0.06266655
43	POF-B06-44-2SS ~ PIB-B06	0.688	0.0000045	-	0.000003096	0.0243036
44	POF-B06-44-2SS ~ PAB-B06	0.804	0.0000045	-	0.000003618	0.0284013
45	POF-B06-44-1SS ~ PK-B06	0.299	0.0000045	-	1.3455E-06	0.010562175
46	GA-B06-44 ~ PAB-B06	1.1815	0.0000045	-	5.31675E-06	0.041736488
47	POF-B06-45-1SS ~ CG-B06	0.8	0.0000045	-	0.0000036	0.02826
48	POF-B06-45-1SS ~ PAB-B06	0.299	0.0000045	-	1.3455E-06	0.010562175
49	POF-B06-45-1SS ~ PIB-B06	0.287	0.0000045	-	1.2915E-06	0.010138275
50	GB-B06-45 ~ PIB-B06	1.774	0.0000045	-	0.000007983	0.06266655
51	POF-B06-45-2SS ~ PIB-B06	0.438	0.0000045	-	0.000001971	0.01547235
52	POF-B06-45-1SS ~ PK-B06	0.291	0.0000045	-	1.3095E-06	0.010279575
53	GA-B06-45 ~ PAB-B06	1.847	0.0000045	-	8.3115E-06	0.065245275
54	POF-B06-45-2SS ~ PAB-B06	0.52	0.0000045	-	0.00000234	0.018369
55	PSF-B06-46-SS ~ CG-B06	0.799	0.0000045	-	3.5955E-06	0.028224675
56	PSF-B06-46-SS ~ PIB-B06	2.331	0.0000045	-	1.04895E-05	0.082342575
57	PSF-B06-46-SS ~ PAB-B06	2.496	0.0000045	-	0.000011232	0.0881712
58	PSF-B06-47-SS ~ CG-B06	0.799	0.0000045	-	3.5955E-06	0.028224675
59	PSF-B06-47-SS ~ PIB-B06	2.072	0.0000045	-	0.000009324	0.0731934
60	PSF-B06-47-SS ~ PAB-B06	2.242	0.0000045	-	0.000010089	0.07919865
61	PSF-B06-48-SS ~ CG-B06	0.798	0.0000045	-	0.000003591	0.02818935
62	PSF-B06-48-SS ~ PIB-B06	1.813	0.0000045	-	8.1585E-06	0.064044225
63	PSF-B06-48-SS ~ PAB-B06	1.991	0.0000045	-	8.9595E-06	0.070332075
64	PWF-B06-49-SS ~ CG-B06	0.793	0.0000045	-	3.5685E-06	0.028012725
65	PWF-B06-49-SS ~ PIB-B06	1.551	0.0000045	-	6.9795E-06	0.054789075
66	PWF-B06-49-SS ~ PAB-B06	1.744	0.0000045	-	0.000007848	0.0616068
67	PWF-B06-50-SS ~ CG-B06	0.497	0.0000045	-	2.2365E-06	0.017556525
68	PWF-B06-50-SS ~ PIB-B06	0.837	0.0000045	-	3.7665E-06	0.029567025
69	PWF-B06-50-SS ~ PAB-B06	0.973	0.0000045	-	4.3785E-06	0.034371225
70	PWF-B06-51-SS ~ CG-B06	0.434	0.0000045	-	0.000001953	0.01533105
71	PWF-B06-51-SS ~ PIB-B06	0.595	0.0000045	-	2.6775E-06	0.021018375
72	PWF-B06-51-SS ~ PAB-B06	0.736	0.0000045	-	0.000003312	0.0259992
73	PWF-B06-52-SS ~ CG-B06	0.496	0.0000045	-	0.000002232	0.0175212
74	PWF-B06-52-SS ~ PIB-B06	0.627	0.0000045	-	2.8215E-06	0.022148775
75	PWF-B06-52-SS ~ PAB-B06	0.8	0.0000045	-	0.0000036	0.02826
	<b>TOTAL</b>	<b>94.843</b>	<b>0.000341</b>	<b>-</b>	<b>0.000493994</b>	<b>3.877848975</b>

SUB ASSEMBLY 2 (SUB BLOCK SIDE)						
NO	KOMPONEN	PANJANG ALUR PENGLASAN (m)	LUAS KAMPUH (m <sup>2</sup> )	BERAT MATERIAL (kg)	VOLUME (m <sup>3</sup> )	BERAT ELEKTRODA
		(1)	(2)	(3)	(4)	(5)
1	PSS-B06-PS ~ PAB-B06	4.834	3.46092E-05	-	0.000167301	1.313310713
2	MF-B06-44-PS ~ PAB-B06-PS	1.689	0.0000045	-	7.6005E-06	0.059663925
3	MF-B06-45-PS ~ PAB-B06-PS	1.655	0.0000045	-	7.4475E-06	0.058462875
4	MF-B06-47-PS ~ PAB-B06-PS	1.577	0.0000045	-	7.0965E-06	0.055707525
5	MF-B06-48-PS ~ PAB-B06-PS	1.533	0.0000045	-	6.8985E-06	0.054153225
6	MF-B06-50-PS ~ PAB-B06-PS	1.426	0.0000045	-	0.000006417	0.05037345
7	MF-B06-51-PS ~ PAB-B06-PS	1.379	0.0000045	-	6.2055E-06	0.048713175
8	PSS-B06-SS ~ PAB-B06	4.834	0.0000045	-	0.000021753	0.17076105
9	MF-B06-44-SS ~ PAB-B06-SS	1.689	0.0000045	-	7.6005E-06	0.059663925
10	MF-B06-45-SS ~ PAB-B06-SS	1.655	0.0000045	-	7.4475E-06	0.058462875
11	MF-B06-47-SS ~ PAB-B06-SS	1.577	0.0000045	-	7.0965E-06	0.055707525
12	MF-B06-48-SS ~ PAB-B06-SS	1.533	0.0000045	-	6.8985E-06	0.054153225
13	MF-B06-50-SS ~ PAB-B06-SS	1.426	0.0000045	-	0.000006417	0.05037345
14	MF-B06-51-SS ~ PAB-B06-SS	1.379	0.0000045	-	6.2055E-06	0.048713175
15	WF-B06-46-PS ~ PAB-B06	1.614	0.000008	-	0.000012912	0.1013592
16	WF-B06-46-SS ~ PAB-B06	1.614	0.000008	-	0.000012912	0.1013592
17	TB-B06-49-PS ~ PSS.PAB-B06	3.35	0.000008	-	0.0000268	0.21038
18	TB-B06-52-PS ~ PSS.PAB-B06	3.225	0.000008	-	0.0000258	0.20253
19	TB-B06-49-SS ~ PSS.PAB-B06	3.35	0.000008	-	0.0000268	0.21038
20	TB-B06-52-SS ~ PSS.PAB-B06	3.225	0.000008	-	0.0000258	0.20253
21	BCMF-B06-44-PS ~ MF-B06-44-PS	0.256	0.0000045	-	0.000001152	0.0090432
22	BCMF-B06-45-PS ~ MF-B06-45-PS	0.256	0.0000045	-	0.000001152	0.0090432
23	BCMF-B06-47-PS ~ MF-B06-47-PS	0.256	0.0000045	-	0.000001152	0.0090432
24	BCMF-B06-48-PS ~ MF-B06-48-PS	0.256	0.0000045	-	0.000001152	0.0090432
25	BCMF-B06-50-PS ~ MF-B06-50-PS	0.256	0.0000045	-	0.000001152	0.0090432
26	BCMF-B06-51-PS ~ MF-B06-51-PS	0.256	0.0000045	-	0.000001152	0.0090432
27	BCMF-B06-44-PS ~ PIB-B06	0.335	0.0000045	3.79775935	1.5075E-06	0.011833875
28	BCMF-B06-45-PS ~ PIB-B06	0.335	0.0000045	3.79775935	1.5075E-06	0.011833875
29	BCMF-B06-47-PS ~ PIB-B06	0.335	0.0000045	3.79775935	1.5075E-06	0.011833875
30	BCMF-B06-48-PS ~ PIB-B06	0.335	0.0000045	3.79775935	1.5075E-06	0.011833875
31	BCMF-B06-50-PS ~ PIB-B06	0.335	0.0000045	3.79775935	1.5075E-06	0.011833875
32	BCMF-B06-51-PS ~ PIB-B06	0.335	0.0000045	3.79775935	1.5075E-06	0.011833875
33	WF-B06-46-PS ~ PIB-B06	0.459	0.000008	-	0.000003672	0.0288252
34	TB-B06-49-PS ~ PIB-B06	1.583	0.0000045	-	7.1235E-06	0.055919475
35	TB-B06-52-PS ~ PIB-B06	0.637	0.0000045	-	2.8665E-06	0.022502025
36	BCMF-B06-44-SS ~ MF-B06-44-SS	0.256	0.0000045	-	0.000001152	0.0090432
37	BCMF-B06-45-SS ~ MF-B06-45-SS	0.256	0.0000045	-	0.000001152	0.0090432
38	BCMF-B06-47-SS ~ MF-B06-47-SS	0.256	0.0000045	-	0.000001152	0.0090432
39	BCMF-B06-48-SS ~ MF-B06-48-SS	0.256	0.0000045	-	0.000001152	0.0090432
40	BCMF-B06-50-SS ~ MF-B06-50-SS	0.256	0.0000045	-	0.000001152	0.0090432
41	BCMF-B06-51-SS ~ MF-B06-51-SS	0.256	0.0000045	-	0.000001152	0.0090432
42	BCMF-B06-44-SS ~ PIB-B06	0.335	0.0000045	3.79775935	1.5075E-06	0.011833875
43	BCMF-B06-45-SS ~ PIB-B06	0.335	0.0000045	3.79775935	1.5075E-06	0.011833875
44	BCMF-B06-47-SS ~ PIB-B06	0.335	0.0000045	3.79775935	1.5075E-06	0.011833875
45	BCMF-B06-48-SS ~ PIB-B06	0.335	0.0000045	3.79775935	1.5075E-06	0.011833875
46	BCMF-B06-50-SS ~ PIB-B06	0.335	0.0000045	3.79775935	1.5075E-06	0.011833875
47	BCMF-B06-51-SS ~ PIB-B06	0.335	0.0000045	3.79775935	1.5075E-06	0.011833875
48	WF-B06-46-SS ~ PIB-B06	0.459	0.000008	-	0.000003672	0.0288252
49	TB-B06-49-SS ~ PIB-B06	1.583	0.0000045	-	7.1235E-06	0.055919475
50	TB-B06-52-SS ~ PIB-B06	0.637	0.0000045	-	2.8665E-06	0.022502025
51	<b>TOTAL</b>	<b>57.014</b>	<b>0.000283109</b>	<b>45.5731122</b>	<b>0.000462647</b>	<b>3.631776813</b>

SUB ASSEMBLY 3 (SUB BLOCK LONGITUDINAL BULKHEAD)						
NO	KOMPONEN	PANJANG ALUR PENGELASAN (m)	LUAS KAMPUH (m <sup>2</sup> )	BERAT MATERIAL (kg)	VOLUME (m <sup>3</sup> )	BERAT ELEKTRODA
		(1)	(2)	(3)	(4)	(5)
1	PLB-B06-PS ~ PIB-B06	2.4	0.000008	304.75584	0.0000192	0.15072
2	WF-B06-46-PS ~ PIB-B06	0.608	0.000008	-	0.000004864	0.0381824
3	WF-B06-46-SS ~ PIB-B06	0.608	0.000008	-	0.000004864	0.0381824
4	BCMF-B06-44-PS ~ MF-B06-44-PS	0.256	0.0000045	-	0.000001152	0.0090432
5	BCMF-B06-45-PS ~ MF-B06-45-PS	0.256	0.0000045	-	0.000001152	0.0090432
6	BCMF-B06-47-PS ~ MF-B06-47-PS	0.256	0.0000045	-	0.000001152	0.0090432
7	BCMF-B06-48-PS ~ MF-B06-48-PS	0.256	0.0000045	-	0.000001152	0.0090432
8	BCMF-B06-50-PS ~ MF-B06-50-PS	0.256	0.0000045	-	0.000001152	0.0090432
9	BCMF-B06-51-PS ~ MF-B06-51-PS	0.256	0.0000045	-	0.000001152	0.0090432
10	BCMF-B06-44-SS ~ MF-B06-44-SS	0.335	0.0000045	-	1.5075E-06	0.011833875
11	BCMF-B06-45-SS ~ MF-B06-45-SS	0.335	0.0000045	-	1.5075E-06	0.011833875
12	BCMF-B06-47-SS ~ MF-B06-47-SS	0.335	0.0000045	-	1.5075E-06	0.011833875
13	BCMF-B06-48-SS ~ MF-B06-48-SS	0.335	0.0000045	-	1.5075E-06	0.011833875
14	BCMF-B06-50-SS ~ MF-B06-50-SS	0.335	0.0000045	-	1.5075E-06	0.011833875
15	BCMF-B06-51-SS ~ MF-B06-51-SS	0.335	0.0000045	-	1.5075E-06	0.011833875
16	BCMF-B06-44-PS ~ PIB-B06	0.257	0.0000045	3.79775935	1.1565E-06	0.009078525
17	BCMF-B06-45-PS ~ PIB-B06	0.257	0.0000045	3.79775935	1.1565E-06	0.009078525
18	BCMF-B06-47-PS ~ PIB-B06	0.257	0.0000045	3.79775935	1.1565E-06	0.009078525
19	BCMF-B06-48-PS ~ PIB-B06	0.257	0.0000045	3.79775935	1.1565E-06	0.009078525
20	BCMF-B06-50-PS ~ PIB-B06	0.257	0.0000045	3.79775935	1.1565E-06	0.009078525
21	BCMF-B06-51-PS ~ PIB-B06	0.257	0.0000045	3.79775935	1.1565E-06	0.009078525
22	BCMF-B06-44-SS ~ PIB-B06	0.257	0.0000045	3.79775935	1.1565E-06	0.009078525
23	BCMF-B06-45-SS ~ PIB-B06	0.257	0.0000045	3.79775935	1.1565E-06	0.009078525
24	BCMF-B06-47-SS ~ PIB-B06	0.257	0.0000045	3.79775935	1.1565E-06	0.009078525
25	BCMF-B06-48-SS ~ PIB-B06	0.257	0.0000045	3.79775935	1.1565E-06	0.009078525
26	BCMF-B06-50-SS ~ PIB-B06	0.257	0.0000045	3.79775935	1.1565E-06	0.009078525
27	BCMF-B06-51-SS ~ PIB-B06	0.257	0.0000045	3.79775935	1.1565E-06	0.009078525
28	PLB-B06-SS ~ PIB-B06	2.4	0.000008	304.75584	0.0000192	0.15072
	<b>TOTAL</b>	<b>12.646</b>	<b>0.00014</b>	<b>655.0847922</b>	<b>0.000077963</b>	<b>0.61200955</b>



SUB ASSEMBLY 4 (SUB BLOCK DECK)						
NO	KOMPONEN	PANJANG ALUR PENGLASAN (m)	LUAS KAMPUH (m <sup>2</sup> )	BERAT MATERIAL (kg)	VOLUME (m <sup>3</sup> )	BERAT ELEKTRODA
		(1)	(2)	(3)	(4)	(5)
1	GTDB-B06-46-1PS ~ LDG-B06-PS	0.258	0.000008	-	0.000002064	0.0162024
2	GTDB-B06-46-1SS ~ LDG-B06-SS	0.258	0.000008	-	0.000002064	0.0162024
3	GTDB-B06-46-1PS ~ PLB-B04-PS	0.521	0.000008	-	0.000004168	0.0327188
4	GTDB-B06-46-1SS ~ PLB-B06-SS	0.521	0.000008	-	0.000004168	0.0327188
5	TDB-B06-44-1PS ~ LDG-B06	0.321	0.0000045	-	1.4445E-06	0.011339325
6	TDB-B06-45-1PS ~ LDG-B06	0.321	0.0000045	-	1.4445E-06	0.011339325
7	TDB-B06-47-1PS ~ LDG-B06	0.321	0.0000045	-	1.4445E-06	0.011339325
8	TDB-B06-48-1PS ~ LDG-B06	0.321	0.0000045	-	1.4445E-06	0.011339325
9	TDB-B06-50-1PS ~ LDG-B06	0.321	0.0000045	-	1.4445E-06	0.011339325
10	TDB-B06-51-1PS ~ LDG-B06	0.321	0.0000045	-	1.4445E-06	0.011339325
11	TDB-B06-44-1SS ~ LDG-B06	0.321	0.0000045	-	1.4445E-06	0.011339325
12	TDB-B06-45-1SS ~ LDG-B06	0.321	0.0000045	-	1.4445E-06	0.011339325
13	TDB-B06-47-1SS ~ LDG-B06	0.321	0.0000045	-	1.4445E-06	0.011339325
14	TDB-B06-48-1SS ~ LDG-B06	0.321	0.0000045	-	1.4445E-06	0.011339325
15	TDB-B06-50-1SS ~ LDG-B06	0.321	0.0000045	-	1.4445E-06	0.011339325
16	TDB-B06-51-1SS ~ LDG-B06	0.321	0.0000045	-	1.4445E-06	0.011339325
17	BCTDB-B06-44-1PS ~ PLB-B06	0.353	0.0000045	1.15395	1.5885E-06	0.012469725
18	BCTDB-B06-45-1PS ~ PLB-B06	0.353	0.0000045	1.15395	1.5885E-06	0.012469725
19	BCTDB-B06-47-1PS ~ PLB-B06	0.353	0.0000045	1.15395	1.5885E-06	0.012469725
20	BCTDB-B06-48-1PS ~ PLB-B06	0.353	0.0000045	1.15395	1.5885E-06	0.012469725
21	BCTDB-B06-50-1PS ~ PLB-B06	0.353	0.0000045	1.15395	1.5885E-06	0.012469725
22	BCTDB-B06-51-1PS ~ PLB-B06	0.353	0.0000045	1.15395	1.5885E-06	0.012469725
23	BCTDB-B06-44-1SS ~ PLB-B06	0.353	0.0000045	1.15395	1.5885E-06	0.012469725
24	BCTDB-B06-45-1SS ~ PLB-B06	0.353	0.0000045	1.15395	1.5885E-06	0.012469725
25	BCTDB-B06-47-1SS ~ PLB-B06	0.353	0.0000045	1.15395	1.5885E-06	0.012469725
26	BCTDB-B06-48-1SS ~ PLB-B06	0.353	0.0000045	1.15395	1.5885E-06	0.012469725
27	BCTDB-B06-50-1SS ~ PLB-B06	0.353	0.0000045	1.15395	1.5885E-06	0.012469725
28	BCTDB-B06-51-1SS ~ PLB-B06	0.353	0.0000045	1.15395	1.5885E-06	0.012469725
29	BCTDB-B06-44-PS ~ MF-B06-44-PS	0.305	0.0000045	1.15395	1.3725E-06	0.010774125
30	BCTDB-B06-45-PS ~ MF-B06-45-PS	0.305	0.0000045	1.15395	1.3725E-06	0.010774125
31	BCTDB-B06-47-PS ~ MF-B06-47-PS	0.305	0.0000045	1.15395	1.3725E-06	0.010774125
32	BCTDB-B06-48-PS ~ MF-B06-48-PS	0.305	0.0000045	1.15395	1.3725E-06	0.010774125
33	BCTDB-B06-50-PS ~ MF-B06-50-PS	0.305	0.0000045	1.15395	1.3725E-06	0.010774125
34	BCTDB-B06-51-PS ~ MF-B06-51-PS	0.305	0.0000045	1.15395	1.3725E-06	0.010774125
35	BCTDB-B06-44-SS ~ MF-B06-44-SS	0.305	0.0000045	1.15395	1.3725E-06	0.010774125
36	BCTDB-B06-45-SS ~ MF-B06-45-SS	0.305	0.0000045	1.15395	1.3725E-06	0.010774125
37	BCTDB-B06-47-SS ~ MF-B06-47-SS	0.305	0.0000045	1.15395	1.3725E-06	0.010774125
38	BCTDB-B06-48-SS ~ MF-B06-48-SS	0.305	0.0000045	1.15395	1.3725E-06	0.010774125
39	BCTDB-B06-50-SS ~ MF-B06-50-SS	0.305	0.0000045	1.15395	1.3725E-06	0.010774125
40	BCTDB-B06-51-SS ~ MF-B06-51-SS	0.305	0.0000045	1.15395	1.3725E-06	0.010774125
41	DPP-B06 ~ IB-B06	0.389	0.000018	1.611	0.000007002	0.0549657
42	DPP-B06 ~ LDG-B06-1	0.389	0.000018	1.611	0.000007002	0.0549657
43	BP-B06 ~ DPP-IB-B06	0.314	0.000018	110.921	0.000005652	0.0443682
44	BCBP-B06-1 ~ BP-B06	0.127	0.0000045	0.492	5.715E-07	0.004486275
45	BCBP-B06-1 ~ IB-B06	0.081	0.0000045	-	3.645E-07	0.002861325
46	BCBP-B06-1 ~ LDG-B06-1	0.127	0.0000045	0.492	5.715E-07	0.004486275
47	BCBP-B06-2 ~ BP-B06	0.081	0.0000045	-	3.645E-07	0.002861325
48	BCBP-B06-2 ~ GTDB-B06-46-1PS	0.127	0.0000045	0.492	5.715E-07	0.004486275
49	BCBP-B06-3 ~ BP-B06	0.127	0.0000045	-	5.715E-07	0.004486275
50	BCBP-B06-3 ~ GTDB-B06-46-1SS	0.081	0.0000045	0.492	3.645E-07	0.002861325
51	BCBP-B06-4 ~ BP-B06	0.127	0.0000045	-	5.715E-07	0.004486275
52	BCBP-B06-4 ~ LDG-B06-1	0.081	0.0000045	0.492	3.645E-07	0.002861325
53	BCBP-B06-4 ~ DPPLDG-B06	0.389	0.000018	110.921	0.000007002	0.0549657
	<b>TOTAL</b>	<b>15.746</b>	<b>0.0003065</b>	<b>255.2188</b>	<b>9.63035E-05</b>	<b>0.755982475</b>

Lampiran 1. 3 Tabel Hasil Perhitungan Berat Isian Las Tiap Tahap Pekerjaan Blok 07

PANEL 1(INNER BOTTOM)						
NO	KOMPONEN	PANJANG ALUR PENGELASAN (m)	LUAS KAMPUH (m <sup>2</sup> )	BERAT MATERIAL (kg)	VOLUME (m <sup>3</sup> )	BERAT ELEKTRODA TERPAKAI
		(1)	(2)	(3)	(4)	
1	PELAT 1	-	-	67.824	-	-
2	Pelat (2) ~ Pelat (3)	0.60	0.0000229	135.648	0.00001374	0.107859
3	Pelat (3) ~ Pelat (4)	0.60	0.0000229	67.824	0.00001374	0.107859
4	Center girder ~ Plat (1)	0.6	0.000008	148.365	0.0000048	0.03768
5	Center girder ~ Plat (3)	0.6	0.000008	-	0.0000048	0.03768
	<b>TOTAL</b>	<b>2.40</b>	<b>0.0000618</b>	<b>419.661</b>	<b>0.00003708</b>	<b>0.291078</b>

PANEL 2 (WRANG)						
NO	KOMPONEN	PANJANG ALUR PENGELASAN (m)	LUAS KAMPUH (m <sup>2</sup> )	BERAT MATERIAL (kg)	VOLUME (m <sup>3</sup> )	BERAT ELEKTRODA
		(1)	(2)	(3)	(4)	-
1	PWF-B07-53-PS	-	-	9.7890128	-	-
2	PWF-B07-54-PS	-	-	10.903336	-	-
3	PWF-B07-56-PS	-	-	15.6983672	-	-
4	PWF-B07-57-PS	-	-	25.1668488	-	-
5	PWF-B07-53-SS	-	-	9.7890128	-	-
6	PWF-B07-54-SS	-	-	0	-	-
7	PWF-B07-56-SS	-	-	15.6983672	-	-
8	PWF-B07-57-SS	-	-	25.1668488	-	-
9	<b>TOTAL</b>		<b>0</b>	<b>112.2117936</b>		

PANEL 3(BOTTOM PLATE)						
NO	KOMPONEN	PANJANG ALUR PENGELASAN (m)	LUAS KAMPUH (m <sup>2</sup> )	BERAT MATERIAL (kg)	VOLUME (m <sup>3</sup> )	BERAT ELEKTRODA TERPAKAI
		(1)	(2)	(3)	(4)	(5)=(4)*Berat jenis baja
1	PK-B06 ~ PAB-B06-1PS ~ PAB-B06-1SS	7.332	6.35225E-05	377.1020539	0.000465747	3.656113715
2	PAB-B07-1PS ~ PAB-B07-2PS	3.715	0.00004531	130.1986547	0.000168327	1.321364203
3	PAB-B07-2PS ~ PAB-B07-3PS	3.713	0.00004531	130.6790152	0.000168236	1.320652836
4	PAB-B07-3PS ~ PAB-B07-4PS	3.709	0.00004531	132.2589605	0.000168055	1.319230102
5	PAB-B07-4PS ~ PAB-B07-5PS	3.706	0.00004531	135.7968899	0.000167919	1.318163051
6	PAB-B07-1SS ~ PAB-B07-2SS	3.715	0.00004531	130.1986547	0.000168327	1.321364203
7	PAB-B07-2SS ~ PAB-B07-3SS	3.713	0.00004531	130.6790152	0.000168236	1.320652836
8	PAB-B07-3SS ~ PAB-B07-4SS	3.709	0.00004531	132.2589605	0.000168055	1.319230102
9	PAB-B07-4SS ~ PAB-B07-5SS	3.706	0.00004531	135.7968899	0.000167919	1.318163051
10	<b>TOTAL</b>	<b>37.018</b>	<b>0.000426003</b>	<b>1434.969095</b>	<b>0.00181082</b>	<b>14.2149341</b>

PANEL 4(SIDE SHELL)						
NO	KOMPONEN	PANJANG ALUR PENGELASAN (m)	LUAS KAMPUH (m <sup>2</sup> )	BERAT MATERIAL (kg)	VOLUME (m <sup>3</sup> )	BERAT ELEKTRODA TERPAKAI
		(1)	(2)	(3)	(4)	
1	PSS-B07-1PS ~ PSS-B07-2PS	3.606	0.0000229	444.498	8.25774E-05	0.64823259
2	PSS-B07-2PS ~ PSS-B07-3PS	3.67	0.0000229	195.503	0.000084043	0.65973755
3	MF-B07-53-1PS ~ PSS-B07-1PS,2PS,3PS	2.451	0.0000045	8.737	1.10295E-05	0.086581575
4	MF-B07-53-2PS ~ PSS-B07-1PS,2PS,3PS	0.967	0.0000045	3.893	4.3515E-06	0.034159275
5	MF-B07-54-1PS ~ PSS-B07-1PS,2PS,3PS	2.453	0.0000045	8.737	1.10385E-05	0.086652225
6	MF-B07-54-2PS ~ PSS-B07-1PS,2PS,3PS	0.968	0.0000045	3.893	0.000004356	0.0341946
7	MF-B07-56-1PS ~ PSS-B07-1PS,2PS,3PS	2.46	0.0000045	8.737	0.00001107	0.0868995
8	MF-B07-56-2PS ~ PSS-B07-1PS,2PS,3PS	0.971	0.0000045	3.893	4.3695E-06	0.034300575
9	MF-B07-57-1PS ~ PSS-B07-1PS,2PS,3PS	2.464	0.0000045	8.737	0.000011088	0.0870408
10	MF-B07-57-2PS ~ PSS-B07-1PS,2PS,3PS	0.972	0.0000045	3.893	0.000004374	0.0343359
11	STFB-B07-55-1PS ~ TB-B07-55-PS	2.297	0.0000045	6.405	1.03365E-05	0.081141525
12	STFB-B07-55-2PS ~ TB-B07-55-PS	2.344	0.0000045	6.499	0.000010548	0.0828018
13	WF-B07-55-PS ~ PSS-B07-PS	0.996	0.000008	16.328	0.000007968	0.0625488
14	TB-B07-55-PS ~ PSS-B07-PS	2.506	0.000008	27.786	0.000020048	0.1573768
15	WF-B07-58-1PS ~ PSS-B07-PS	2.523	0.000008	128.422	0.000020184	0.1584444
16	WF-B07-58-2PS ~ PSS-B07-PS	1.003	0.000008	15.825	0.000008024	0.0629884
17	PSS-B07-1SS ~ PSS-B07-2SS	3.606	0.0000229	444.498	8.25774E-05	0.64823259
18	PSS-B07-2SS ~ PSS-B07-3SS	3.67	0.0000229	195.503	0.000084043	0.65973755
19	MF-B07-53-1SS ~ PSS-B07-1SS,2SS,3SS	2.451	0.0000045	8.737	1.10295E-05	0.086581575
20	MF-B07-53-2SS ~ PSS-B07-1SS,2SS,3SS	0.967	0.0000045	3.893	4.3515E-06	0.034159275
21	MF-B07-54-1SS ~ PSS-B07-1SS,2SS,3SS	2.453	0.0000045	8.737	1.10385E-05	0.086652225
22	MF-B07-54-2SS ~ PSS-B07-1SS,2SS,3SS	0.968	0.0000045	3.893	0.000004356	0.0341946
23	MF-B07-56-1SS ~ PSS-B07-1SS,2SS,3SS	2.46	0.0000045	8.737	0.00001107	0.0868995
24	MF-B07-56-2SS ~ PSS-B07-1SS,2SS,3SS	0.971	0.0000045	3.893	4.3695E-06	0.034300575
25	MF-B07-57-1SS ~ PSS-B07-1SS,2SS,3SS	2.464	0.0000045	8.737	0.000011088	0.0870408
26	MF-B07-57-2SS ~ PSS-B07-1SS,2SS,3SS	0.972	0.0000045	3.893	0.000004374	0.0343359
27	STFB-B07-55-1SS ~ TB-B07-55-SS	2.297	0.0000045	6.405	1.03365E-05	0.081141525
28	STFB-B07-55-2SS ~ TB-B07-55-SS	2.344	0.0000045	6.499	0.000010548	0.0828018
29	WF-B07-55-SS ~ PSS-B07-SS	0.996	0.000008	16.328	0.000007968	0.0625488
30	TB-B07-55-SS ~ PSS-B07-SS	2.506	0.000008	27.786	0.000020048	0.1573768
31	WF-B07-58-1SS ~ PSS-B07-SS	2.523	0.000008	128.422	0.000020184	0.1584444
32	WF-B07-58-2SS ~ PSS-B07-SS	1.003	0.000008	15.825	0.000008024	0.0629884
	<b>TOTAL</b>	<b>65.302</b>	<b>0.0002456</b>	<b>1783.572</b>	<b>0.000610812</b>	<b>4.79487263</b>

PANEL 5 (DECK 1)						
NO	KOMPONEN	PANJANG ALUR PENGLASAN (m)	LUAS KAMPUH (m <sup>2</sup> )	BERAT MATERIAL (kg)	VOLUME (m <sup>3</sup> )	BERAT ELEKTRODA TERPAKAI
		(1)	(2)	(3)	(4)	
1	PD-B07-1 ~ PD-B07-2	4.8	4.82902E-05	1243.44	0.000231793	1.819574736
2	PD-B07-2 ~ PD-B07-3	4.8	4.82902E-05	565.2	0.000231793	1.819574736
3	PD-B07-3 ~ PD-B07- 4	4.8	4.82902E-05	565.2	0.000231793	1.819574736
4	PD-B07-4 ~ PD-B07-5	4.8	4.82902E-05	1124.748	0.000231793	1.819574736
5	GTDBb-B07-55-PS ~ GTDBb-B07-55-PS	2.923663	0.000008	92.7249536	2.33893E-05	0.183606036
6	GTDBb-B07-58-PS ~ GTDBb-B07-58-PS	2.426683	0.000008	52.59871749	1.94135E-05	0.152395692
7	GTDBb-B07-59-PS ~ GTDBb- B07-59-PS	2.308841	0.000008	47.73316189	1.84707E-05	0.144995215
8	GTDB-B07-55-PS ~ PD-B07	3.618	0.0000045	-	0.000016281	0.12780585
9	GTDB-B07-58-PS ~ PD-B07	3.11126	0.0000045	-	1.40007E-05	0.10990526
10	GTDB-B07-59-PS ~ PD-B07	2.82	0.0000045	-	0.00001269	0.0996165
11	TDB-B07-53-PS ~ PD-B07	3.756	0.0000045	15.48309665	0.000016902	0.1326807
12	TDB-B07-54-PS ~ PD-B07	3.615	0.0000045	14.89873548	1.62675E-05	0.127699875
13	TDB-B07-56-PS ~ PD-B07	3.297	0.0000045	13.59138795	1.48365E-05	0.116466525
14	TDB-B07-57-PS ~ PD-B07	3.118	0.0000045	12.85204949	0.000014031	0.11014335
15	LTDGt-B07 ~ LTDGt-B07	2.4	0.000008	0.000158256	0.0000192	0.15072
16	LTDG-B07 ~ PD-B07	2.4	0.000008	-	0.0000192	0.15072
17	PD-B07-1 ~ PD-B07-2	4.8	4.82902E-05	1243.44	0.000231793	1.819574736
18	PD-B07-2 ~ PD-B07-3	4.8	4.82902E-05	565.2	0.000231793	1.819574736
19	PD-B07-3 ~ PD-B07- 4	4.8	4.82902E-05	565.2	0.000231793	1.819574736
20	PD-B07-4 ~ PD-B07-5	4.8	4.82902E-05	1124.748	0.000231793	1.819574736
21	GTDBb-B07-55-SS ~ GTDBb-B07-55-SS	2.923663	0.000008	92.7249536	2.33893E-05	0.183606036
22	GTDBb-B07-58-SS ~ GTDBb-B07-58-SS	2.426683	0.000008	52.59871749	1.94135E-05	0.152395692
23	GTDBb-B07-59-SS ~ GTDBb- B07-59-SS	2.308841	0.000008	47.73316189	1.84707E-05	0.144995215
24	GTDB-B07-55-SS ~ PD-B07	3.618	0.0000045	-	0.000016281	0.12780585
25	GTDB-B07-58-SS ~ PD-B07	3.11126	0.0000045	-	1.40007E-05	0.10990526
26	GTDB-B07-59-SS ~ PD-B07	2.82	0.0000045	-	0.00001269	0.0996165
27	TDB-B07-53-SS ~ PD-B07	3.756	0.0000045	15.48309665	0.000016902	0.1326807
28	TDB-B07-54-SS ~ PD-B07	3.615	0.0000045	14.89873548	1.62675E-05	0.127699875
29	TDB-B07-56-SS ~ PD-B07	3.297	0.0000045	13.59138795	1.48365E-05	0.116466525
30	TDB-B07-57-SS ~ PD-B07	3.118	0.0000045	12.85204949	0.000014031	0.11014335
31	LTDGt-B07 ~ LTDGt-B07	2.4	0.000008	0.000158256	0.0000192	0.15072
32	LTDG-B07 ~ PD-B07	2.4	0.000008	-	0.0000192	0.15072
33	<b>TOTAL</b>	<b>109.988894</b>	<b>0.000529322</b>	<b>7496.940522</b>	<b>0.002263708</b>	<b>17.77010789</b>

PANEL 6 (BULKHEAD)						
NO	KOMPONEN	PANJANG ALUR PENGELASAN (m)	LUAS KAMPUH (m <sup>2</sup> )	BERAT MATERIAL (kg)	VOLUME (m <sup>3</sup> )	BERAT ELEKTRODA TERPAKAI
		(1)	(2)	(3)	(4)	
1	PLB-B07-1PS ~ PLB-B07-2PS	3	0.000008	-	0.000024	0.1884
2	TB-B07-55-PS ~ PLB-B07-PS	2.355	0.000008	528.085	0.00001884	0.147894
3	WF-B07-58-PS ~ PLB-B07-PS	2.353	0.000008	8.187	0.000018824	0.1477684
4	MF-B07-53-PS ~ PLB-B07-PS	2.3	0.0000045	-	0.00001035	0.0812475
5	MF-B07-54-PS ~ PLB-B07-PS	2.325	0.0000045	-	1.04625E-05	0.082130625
6	MF-B07-56-PS ~ PLB-B07-PS	2.3	0.0000045	-	0.00001035	0.0812475
7	MF-B07-57-PS ~ PLB-B06-PS	2.3	0.0000045	-	0.00001035	0.0812475
8	PLB-B07-1SS ~ PLB-B07-2SS	3	0.000008	-	0.000024	0.1884
9	TB-B07-55-SS ~ PLB-B07-SS	2.355	0.000008	-	0.00001884	0.147894
10	WF-B07-58-SS ~ PLB-B07-SS	2.353	0.000008	-	0.000018824	0.1477684
11	MF-B07-53-SS ~ PLB-B07-SS	2.3	0.0000045	-	0.00001035	0.0812475
12	MF-B07-54-SS ~ PLB-B07-SS	2.325	0.0000045	-	1.04625E-05	0.082130625
13	MF-B07-56-SS ~ PLB-B07-SS	2.3	0.0000045	-	0.00001035	0.0812475
14	MF-B07-57-SS ~ PLB-B06-SS	2.3	0.0000045	-	0.00001035	0.0812475
14	<b>TOTAL</b>	<b>33.866</b>	<b>0.000084</b>	<b>536.272</b>	<b>0.000206353</b>	<b>1.61987105</b>

PANEL 7 (DECK 2)						
NO	KOMPONEN	PANJANG ALUR PENGELASAN (m)	LUAS KAMPUH (m <sup>2</sup> )	BERAT MATERIAL (kg)	VOLUME (m <sup>3</sup> )	BERAT ELEKTRODA TERPAKAI
		(1)	(2)	(3)	(4)	
1	PD2-B07-1PS ~ PD2-B07-2PS	3	0.000008	-	0.000024	0.1884
2	TDB-B07-53-PS ~ PD2-B07-1PS,2PS	2.091	0.000045	-	9.4095E-06	0.073864575
3	TDB-B07-54-PS ~ PD2-B07-1PS,2PS	1.976	0.000045	8.187	0.00008892	0.0698022
4	TDB-B07-56-PS ~ PD2-B07-1PS,2PS	1.733	0.000045	-	7.7985E-06	0.061218225
5	TDB-B07-57-PS ~ PD2-B07-1PS,2PS	1.605	0.000045	-	7.2225E-06	0.056696625
6	GTDB-B07-58-PS ~ PD2-B07-1PS,2PS	1.951	0.000045	-	8.7795E-06	0.068919075
7	TB-B07-55-PS ~ PD2-B07-1PS,2PS	2.049	0.000008	-	0.000016392	0.1286772
8	BCMF-B07-53-PS ~ MF-B07-53-PS	0.508	0.000045	2.7	0.00002286	0.0179451
9	BCMF-B07-54-PS ~ MF-B07-54-PS	0.508	0.000045	2.7	0.00002286	0.0179451
10	BCMF-B07-56-PS ~ MF-B07-56-PS	0.508	0.000045	2.7	0.00002286	0.0179451
11	BCMF-B07-57-PS ~ MF-B07-57-PS	0.508	0.000045	2.7	0.00002286	0.0179451
12	WF-B07-55-PS ~ PD2-B07-1PS,2PS	0.47	0.000008	-	0.00000376	0.029516
13	WF-B07-58-PS ~ PD2-B07-1PS,2PS	0.444	0.000008	-	0.000003552	0.0278832
14	BCMF-B07-53-PS ~ PD2-B07-1PS,2PS	0.508	0.000045	-	0.00002286	0.0179451
15	BCMF-B07-54-PS ~ PD2-B07-1PS,2PS	0.508	0.000045	-	0.00002286	0.0179451
16	BCMF-B07-56-PS ~ PD2-B07-1PS,2PS	0.508	0.000045	-	0.00002286	0.0179451
17	BCMF-B07-57-PS ~ PD2-B07-1PS,2PS	0.508	0.000045	-	0.00002286	0.0179451
18	PD2-B07-1PS ~ PD2-B07-2PS	3	0.000008	-	0.000024	0.1884
19	TDB-B07-53-PS ~ PD2-B07-1PS,2PS	2.091	0.000045	-	9.4095E-06	0.073864575
20	TDB-B07-54-PS ~ PD2-B07-1PS,2PS	1.976	0.000045	8.187	0.00008892	0.0698022
21	TDB-B07-56-PS ~ PD2-B07-1PS,2PS	1.733	0.000045	-	7.7985E-06	0.061218225
22	TDB-B07-57-PS ~ PD2-B07-1PS,2PS	1.605	0.000045	-	7.2225E-06	0.056696625
23	GTDB-B07-58-PS ~ PD2-B07-1PS,2PS	1.951	0.000045	-	8.7795E-06	0.068919075
24	TB-B07-55-PS ~ PD2-B07-1PS,2PS	2.049	0.000008	-	0.000016392	0.1286772
25	BCMF-B07-53-PS ~ MF-B07-53-PS	0.508	0.000045	2.7	0.00002286	0.0179451
26	BCMF-B07-54-PS ~ MF-B07-54-PS	0.508	0.000045	2.7	0.00002286	0.0179451
27	BCMF-B07-56-PS ~ MF-B07-56-PS	0.508	0.000045	2.7	0.00002286	0.0179451
28	BCMF-B07-57-PS ~ MF-B07-57-PS	0.508	0.000045	2.7	0.00002286	0.0179451
29	WF-B07-55-PS ~ PD2-B07-1PS,2PS	0.47	0.000008	-	0.00000376	0.029516
30	WF-B07-58-PS ~ PD2-B07-1PS,2PS	0.444	0.000008	-	0.000003552	0.0278832
31	BCMF-B07-53-PS ~ PD2-B07-1PS,2PS	0.508	0.000045	-	0.00002286	0.0179451
32	BCMF-B07-54-PS ~ PD2-B07-1PS,2PS	0.508	0.000045	-	0.00002286	0.0179451
33	BCMF-B07-56-PS ~ PD2-B07-1PS,2PS	0.508	0.000045	-	0.00002286	0.0179451
34	BCMF-B07-57-PS ~ PD2-B07-1PS,2PS	0.508	0.000045	-	0.00002286	0.0179451
	<b>TOTAL</b>	<b>38.766</b>	<b>0.000181</b>	<b>37.9772</b>	<b>0.000216188</b>	<b>1.6970758</b>

SUB ASSEMBLY 1 (SUB BLOCK BOTTOM)						
NO	KOMPONEN	PANJANG ALUR PENGLASAN (m)	LUAS KAMPUH (m <sup>2</sup> )	BERAT MATERIAL (kg)	VOLUME (m <sup>3</sup> )	BERAT ELEKTRODA TERPAKAI
		(1)	(2)	(3)	(4)	
1	CG-B07 ~ PK-B07	3.6	0.000008	-	0.0000288	0.22608
2	PWF-B07-53-PS ~ CG-B07	0.496	0.0000045	-	0.00002232	0.0175212
3	PWF-B07-53-PS ~ PIB-B07	0.667	0.0000045	-	3.0015E-06	0.023561775
4	PWF-B07-53-PS ~ PAB-B07	0.831	0.0000045	-	3.7395E-06	0.029355075
5	PWF-B07-54-PS ~ CG-B07	0.496	0.0000045	-	0.00002232	0.0175212
6	PWF-B07-54-PS ~ PIB-B07	0.739	0.0000045	-	3.3255E-06	0.026105175
7	PWF-B07-54-PS ~ PAB-B07	0.89	0.0000045	-	0.00004005	0.03143925
8	PWF-B07-56-PS ~ CG-B07	0.497	0.0000045	-	2.2365E-06	0.017556525
9	PWF-B07-56-PS ~ PIB-B07	1.182	0.0000045	-	0.00005319	0.04175415
10	PWF-B07-56-PS ~ PAB-B07	1.282	0.0000045	-	0.00005769	0.04528665
11	PWF-B07-57-PS ~ CG-B07	0.497	0.0000045	-	2.2365E-06	0.017556525
12	PWF-B07-57-PS ~ PIB-B07	1.803	0.0000045	-	8.1135E-06	0.063690975
13	PWF-B07-57-PS ~ PAB-B07	1.874	0.0000045	-	0.00008433	0.06619905
14	WF-B07-55-PS ~ CG-B07	0.496	0.000008	53.6312	0.00003968	0.0311488
15	WF-B07-58-PS ~ CG-B07	0.498	0.000008	48.356	0.00003984	0.0312744
16	WF-B07-59-PS ~ CG-B07	0.3	0.000008	33.4724	0.000024	0.01884
17	PWF-B07-53-SS ~ CG-B07	0.496	0.0000045	-	0.00002232	0.0175212
18	PWF-B07-53-SS ~ PIB-B07	0.667	0.0000045	-	3.0015E-06	0.023561775
19	PWF-B07-53-SS ~ PAB-B07	0.831	0.0000045	-	3.7395E-06	0.029355075
20	PWF-B07-54-SS ~ CG-B07	0.496	0.0000045	-	0.00002232	0.0175212
21	PWF-B07-54-SS ~ PIB-B07	0.739	0.0000045	-	3.3255E-06	0.026105175
22	PWF-B07-54-SS ~ PAB-B07	0.89	0.0000045	-	0.00004005	0.03143925
23	PWF-B07-56-SS ~ CG-B07	0.497	0.0000045	-	2.2365E-06	0.017556525
24	PWF-B07-56-SS ~ PIB-B07	1.182	0.0000045	-	0.00005319	0.04175415
25	PWF-B07-56-SS ~ PAB-B07	1.282	0.0000045	-	0.00005769	0.04528665
26	PWF-B07-57-SS ~ CG-B07	0.497	0.0000045	-	2.2365E-06	0.017556525
27	PWF-B07-57-SS ~ PIB-B07	1.803	0.0000045	-	8.1135E-06	0.063690975
28	PWF-B07-57-SS ~ PAB-B07	1.874	0.0000045	-	0.00008433	0.06619905
29	WF-B07-55-SS ~ CG-B07	0.496	0.000008	53.6312	0.00003968	0.0311488
30	WF-B07-58-SS ~ CG-B07	0.498	0.000008	48.356	0.00003984	0.0312744
31	WF-B07-59-SS ~ CG-B07	0.3	0.000008	33.4724	0.000024	0.01884
24	<b>TOTAL</b>	<b>28.696</b>	<b>0.000164</b>	<b>270.9192</b>	<b>0.00015079</b>	<b>1.1837015</b>

SUB ASSEMBLY 2 (SUB BLOCK SIDE)						
NO	KOMPONEN	PANJANG ALUR PENGLASAN (m)	LUAS KAMPUH (m <sup>2</sup> )	BERAT MATERIAL (kg)	VOLUME (m <sup>3</sup> )	BERAT ELEKTRODA TERPAKAI
		(1)	(2)	(3)	(4)	
1	PSS-B07-PS ~ PAB-B07-PS	3.6	0.000045	-	0.0000162	0.12717
2	MF-B07-53-PS ~ PAB-B07-PS	3.717	0.000045	-	1.67265E-05	0.131303025
3	MF-B07-54-PS ~ PAB-B07-PS	3.403	0.000045	-	1.53135E-05	0.120210975
4	MF-B07-56-PS ~ PAB-B07-PS	2.466	0.000045	-	0.000011097	0.08711145
5	MF-B07-57-PS ~ PAB-B07-PS	1.638	0.000045	-	0.000007371	0.05786235
6	PSS-B07-SS ~ PAB-B07-SS	3.6	0.000045	-	0.0000162	0.12717
7	MF-B07-53-SS ~ PAB-B07-SS	3.717	0.000045	-	1.67265E-05	0.131303025
8	MF-B07-54-SS ~ PAB-B07-SS	3.403	0.000045	-	1.53135E-05	0.120210975
9	MF-B07-56-SS ~ PAB-B07-SS	2.466	0.000045	-	0.000011097	0.08711145
10	MF-B07-57-SS ~ PAB-B07-SS	1.638	0.000045	-	0.000007371	0.05786235
11	WF-B07-55-PS ~ PAB-B07-PS	4.074	0.000008	-	0.000032592	0.2558472
12	WF-B07-58-PS ~ PAB-B07-PS	3.304	0.000008	-	0.000026432	0.2074912
13	WF-B07-59-PS ~ PAB-B07-PS	3.01	0.000008	-	0.00002408	0.189028
14	BCMF-B07-53-PS ~ MF-B07-53-PS	0.308	0.000045	-	0.000001386	0.0108801
15	BCMF-B07-54-PS ~ MF-B07-54-PS	0.308	0.000045	-	0.000001386	0.0108801
16	BCMF-B07-56-PS ~ MF-B07-56-PS	0.308	0.000045	-	0.000001386	0.0108801
17	BCMF-B07-57-PS ~ MF-B07-57-PS	0.308	0.000045	-	0.000001386	0.0108801
18	BCMF-B07-53-PS ~ PIB-B07	0.2	0.000045	2.198	0.0000009	0.007065
19	BCMF-B07-54-PS ~ PIB-B07	0.2	0.000045	2.198	0.0000009	0.007065
20	BCMF-B07-56-PS ~ PIB-B07	0.2	0.000045	2.198	0.0000009	0.007065
21	BCMF-B07-57-PS ~ PIB-B07	0.2	0.000045	2.198	0.0000009	0.007065
22	WF-B07-55-SS ~ PAB-B07-SS	4.074	0.000008	-	0.000032592	0.2558472
23	WF-B07-58-SS ~ PAB-B07-SS	3.304	0.000008	-	0.000026432	0.2074912
24	WF-B07-59-SS ~ PAB-B07-SS	3.01	0.000008	-	0.00002408	0.189028
25	BCMF-B07-53-SS ~ MF-B07-53-SS	0.308	0.000045	-	0.000001386	0.0108801
26	BCMF-B07-54-SS ~ MF-B07-54-SS	0.308	0.000045	-	0.000001386	0.0108801
27	BCMF-B07-56-SS ~ MF-B07-56-SS	0.308	0.000045	-	0.000001386	0.0108801
28	BCMF-B07-57-SS ~ MF-B07-57-SS	0.308	0.000045	-	0.000001386	0.0108801
29	BCMF-B07-53-SS ~ PIB-B07	0.2	0.000045	2.198	0.0000009	0.007065
30	BCMF-B07-54-SS ~ PIB-B07	0.2	0.000045	2.198	0.0000009	0.007065
31	BCMF-B07-56-SS ~ PIB-B07	0.2	0.000045	2.198	0.0000009	0.007065
32	BCMF-B07-57-SS ~ PIB-B07	0.2	0.000045	2.198	0.0000009	0.007065
32	<b>TOTAL</b>	<b>54.488</b>	<b>0.000165</b>	<b>17.584</b>	<b>0.000317912</b>	<b>2.4956092</b>



SUB ASSEMBLY3 (SUB BLOCK DECK 1)						
NO	KOMPONEN	PANJANG ALUR PENGELASAN (m)	LUAS KAMPUH (m <sup>2</sup> )	BERAT MATERIAL (kg)	VOLUME (m <sup>3</sup> )	BERAT ELEKTRODA TERPAKAI
		(1)	(2)	(3)	(4)	
1	GTDB-B07-55-PS ~ LDG-B07-PS	0.258	0.000008	-	0.000002064	0.0162024
2	GTDB-B07-55-SS ~ LDG-B07-SS	0.258	0.000008	-	0.000002064	0.0162024
3	TDB-B07-53-PS ~ LDG-B07	0.321	0.0000045	-	1.4445E-06	0.011339325
4	TDB-B07-54-PS ~ LDG-B07	0.321	0.0000045	-	1.4445E-06	0.011339325
5	TDB-B07-56-PS ~ LDG-B07	0.321	0.0000045	-	1.4445E-06	0.011339325
6	TDB-B07-57-1PS ~ LDG-B07	0.321	0.0000045	-	1.4445E-06	0.011339325
7	TDB-B07-53-SS ~ LDG-B07	0.321	0.0000045	-	1.4445E-06	0.011339325
8	TDB-B07-54-SS ~ LDG-B07	0.321	0.0000045	-	1.4445E-06	0.011339325
9	TDB-B07-56-SS ~ LDG-B07	0.321	0.0000045	-	1.4445E-06	0.011339325
10	TDB-B07-57-SS ~ LDG-B07	0.321	0.0000045	-	1.4445E-06	0.011339325
11	BCTDB-B07-53-1PS ~ MF-B07-53-PS	0.301	0.0000045	1.15395	1.3545E-06	0.010632825
12	BCTDB-B07-54-1PS ~ MF-B07-54-PS	0.301	0.0000045	1.15395	1.3545E-06	0.010632825
13	BCTDB-B07-56-1PS ~ MF-B07-56-PS	0.301	0.0000045	1.15395	1.3545E-06	0.010632825
14	BCTDB-B07-57-1PS ~ MF-B07-57-PS	0.301	0.0000045	1.15395	1.3545E-06	0.010632825
15	BCTDB-B07-53-SS ~ MF-B07-53-SS	0.301	0.0000045	1.15395	1.3545E-06	0.010632825
16	BCTDB-B07-54-SS ~ MF-B07-54-SS	0.301	0.0000045	1.15395	1.3545E-06	0.010632825
17	BCTDB-B07-56-SS ~ MF-B07-56-SS	0.301	0.0000045	1.15395	1.3545E-06	0.010632825
18	BCTDB-B07-57-SS ~ MF-B07-57-SS	0.301	0.0000045	1.15395	1.3545E-06	0.010632825
19	BCTDB-B07-53-PS ~ LDG-B07	0.203	0.0000045	1.15395	9.135E-07	0.007170975
20	BCTDB-B07-54-PS ~ LDG-B07	0.203	0.0000045	1.15395	9.135E-07	0.007170975
21	BCTDB-B07-55-PS ~ LDG-B07	0.203	0.0000045	1.15395	9.135E-07	0.007170975
22	BCTDB-B07-56-PS ~ LDG-B07	0.203	0.0000045	1.15395	9.135E-07	0.007170975
23	BCTDB-B07-57-PS ~ LDG-B07	0.203	0.0000045	1.15395	9.135E-07	0.007170975
24	BCTDB-B07-53-SS ~ LDG-B07	0.203	0.0000045	1.15395	9.135E-07	0.007170975
25	BCTDB-B07-54-SS ~ LDG-B07	0.203	0.0000045	1.15395	9.135E-07	0.007170975
26	BCTDB-B07-55-SS ~ LDG-B07	0.203	0.0000045	1.15395	9.135E-07	0.007170975
27	BCTDB-B07-56-SS ~ LDG-B07	0.203	0.0000045	1.15395	9.135E-07	0.007170975
28	BCTDB-B07-57-SS ~ LDG-B07	0.203	0.0000045	1.15395	9.135E-07	0.007170975
29	<b>TOTAL</b>	<b>7.522</b>	<b>0.000133</b>	<b>20.7711</b>	<b>0.000035655</b>	<b>0.27989175</b>

SUB ASSEMBLY 4 (SUB BLOCK DECK 2)						
NO	KOMPONEN	PANJANG ALUR PENGLASAN (m)	LUAS KAMPUH (m <sup>2</sup> )	BERAT MATERIAL (kg)	VOLUME (m <sup>3</sup> )	BERAT ELEKTRODA TERPAKAI
		(1)	(2)	(3)	(4)	
1	BCTDB-B07-53-PS ~ MF-B07-53-1PS	0.258	0.000008	-	0.000002064	0.0162024
2	BCTDB-B07-54-PS ~ MF-B07-54-1PS	0.521	0.000008	-	0.000004168	0.0327188
3	BCTDB-B07-56-PS ~ MF-B07-56-1PS	0.521	0.000008	-	0.000004168	0.0327188
4	BCTDB-B07-57-PS ~ MF-B07-57-1PS	0.321	0.0000045	-	1.4445E-06	0.011339325
5	BCTDB-B07-53-2PS ~ MF-B07-53-2PS	0.321	0.0000045	-	1.4445E-06	0.011339325
6	BCTDB-B07-54-2PS ~ MF-B07-54-2PS	0.321	0.0000045	-	1.4445E-06	0.011339325
7	BCTDB-B07-56-2PS ~ MF-B07-56-2PS	0.321	0.0000045	-	1.4445E-06	0.011339325
8	BCTDB-B07-57-2PS ~ MF-B07-57-2PS	0.321	0.0000045	-	1.4445E-06	0.011339325
9	BCMF-B07-53-1PS ~ PD1-B07	0.321	0.0000045	-	1.4445E-06	0.011339325
10	BCMF-B07-54-1PS ~ PD1-B07	0.321	0.0000045	1.15395	1.4445E-06	0.011339325
11	BCMF-B07-56-1PS ~ PD1-B07	0.321	0.0000045	1.15395	1.4445E-06	0.011339325
12	BCMF-B07-57-1PS ~ PD1-B07	0.321	0.0000045	1.15395	1.4445E-06	0.011339325
13	BCMF-B07-53-PS ~ PD2-B07-PS	0.353	0.0000045	1.15395	1.5885E-06	0.012469725
14	BCMF-B07-54-PS ~ PD2-B07-PS	0.353	0.0000045	1.15395	1.5885E-06	0.012469725
15	BCMF-B07-56-PS ~ PD2-B07-PS	0.353	0.0000045	1.15395	1.5885E-06	0.012469725
16	BCMF-B07-57-PS ~ PD2-B07-PS	0.353	0.0000045	1.15395	1.5885E-06	0.012469725
17	TB-B07-55-PS ~ PD2-B07-PS	2.049	0.0000045	-	9.2205E-06	0.072380925
18	TB-B07-55-PS ~ PD1-B07	1.768	0.0000045	-	0.000007956	0.0624546
19	WF-B07-58-PS ~ PD1-B07	1.107	0.0000045	-	4.9815E-06	0.039104775
20	WF-B07-58-PS ~ PD2-B07-PS	1.959	0.0000045	-	8.8155E-06	0.069201675
21	BCTDB-B07-53-SS ~ MF-B07-53-1SS	0.258	0.000008	-	0.000002064	0.0162024
22	BCTDB-B07-54-SS ~ MF-B07-54-1SS	0.521	0.000008	-	0.000004168	0.0327188
23	BCTDB-B07-56-SS ~ MF-B07-56-1SS	0.521	0.000008	-	0.000004168	0.0327188
24	BCTDB-B07-57-SS ~ MF-B07-57-1SS	0.321	0.0000045	-	1.4445E-06	0.011339325
25	BCTDB-B07-53-2SS ~ MF-B07-53-2SS	0.321	0.0000045	-	1.4445E-06	0.011339325
26	BCTDB-B07-54-2SS ~ MF-B07-54-2SS	0.321	0.0000045	-	1.4445E-06	0.011339325
27	BCTDB-B07-56-2SS ~ MF-B07-56-2SS	0.321	0.0000045	-	1.4445E-06	0.011339325
28	BCTDB-B07-57-2SS ~ MF-B07-57-2SS	0.321	0.0000045	-	1.4445E-06	0.011339325
29	BCMF-B07-53-1SS ~ PD1-B07	0.321	0.0000045	1.15395	1.4445E-06	0.011339325
30	BCMF-B07-54-1SS ~ PD1-B07	0.321	0.0000045	1.15395	1.4445E-06	0.011339325
31	BCMF-B07-56-1SS ~ PD1-B07	0.321	0.0000045	1.15395	1.4445E-06	0.011339325
32	BCMF-B07-57-1SS ~ PD1-B07	0.321	0.0000045	1.15395	1.4445E-06	0.011339325
33	BCMF-B07-53-SS ~ PD2-B07-SS	0.353	0.0000045	1.15395	1.5885E-06	0.012469725
34	BCMF-B07-54-SS ~ PD2-B07-SS	0.353	0.0000045	1.15395	1.5885E-06	0.012469725
35	BCMF-B07-56-SS ~ PD2-B07-SS	0.353	0.0000045	1.15395	1.5885E-06	0.012469725
36	BCMF-B07-57-SS ~ PD2-B07-SS	0.353	0.0000045	1.15395	1.5885E-06	0.012469725
37	TB-B07-55-SS ~ PD2-B07-SS	2.049	0.0000045	-	9.2205E-06	0.072380925
38	TB-B07-55-SS ~ PD1-B07	1.768	0.0000045	-	0.000007956	0.0624546
39	WF-B07-58-SS ~ PD1-B07	1.107	0.0000045	-	4.9815E-06	0.039104775
40	WF-B07-58-SS ~ PD2-B07-SS	1.959	0.0000045	-	8.8155E-06	0.069201675
41	<b>TOTAL</b>	<b>24.968</b>	<b>0.000201</b>	<b>17.30925</b>	<b>0.000121456</b>	<b>0.9534296</b>

SUB ASSEMBLY 5 (SUB BLOCK LONGITUDINAL BULKHEAD)						
NO	KOMPONEN	PANJANG ALUR PENGLASAN (m)	LUAS KAMPUH (m <sup>2</sup> )	BERAT MATERIAL (kg)	VOLUME (m <sup>3</sup> )	BERAT ELEKTRODA TERPAKAI
		(1)	(2)	(3)	(4)	
1	PLB-B07-PS ~ PD1-B07	3	0.000008	304.75584	0.000024	0.1884
2	WF-B07-58-PS ~ PLB-B07-PS	0.608	0.000008	-	0.00004864	0.0381824
3	MF-B07-53-PS ~ PLB-B07-PS	0.23	0.0000045	-	0.000001035	0.00812475
4	MF-B07-54-PS ~ PLB-B07-PS	0.23	0.0000045	-	0.000001035	0.00812475
5	MF-B07-56-PS ~ PLB-B07-PS	0.23	0.0000045	-	0.000001035	0.00812475
6	MF-B07-57-PS ~ PLB-B07-PS	0.23	0.0000045	-	0.000001035	0.00812475
7	TB-B07-55-PS ~ PLB-B07-PS	2.355	0.0000045	-	1.05975E-05	0.083190375
8	PLB-B07-PS ~ PD2-B07-PS	3	0.0000045	-	0.0000135	0.105975
9	WF-B07-58-SS ~ PLB-B07-SS	0.608	0.0000045	-	0.00002736	0.0214776
10	MF-B07-53-SS ~ PLB-B07-SS	0.23	0.0000045	-	0.000001035	0.00812475
11	MF-B07-54-SS ~ PLB-B07-SS	0.23	0.0000045	-	0.000001035	0.00812475
12	MF-B07-56-SS ~ PLB-B07-SS	0.23	0.0000045	-	0.000001035	0.00812475
13	MF-B07-57-SS ~ PLB-B07-SS	0.23	0.0000045	-	0.000001035	0.00812475
14	TB-B07-55-S ~ PLB-B07-SS	2.355	0.0000045	-	1.05975E-05	0.083190375
15	PLB-B07-SS ~ PD2-B07-SS	3	0.0000045	-	0.0000135	0.105975
16	PLB-B07-SS ~ PD1-B07	3	0.000008	304.75584	0.000024	0.1884
17	<b>TOTAL</b>	<b>19.766</b>	<b>0.0000825</b>	<b>609.51168</b>	<b>0.000112075</b>	<b>0.87978875</b>

Lampiran 1. 4 Tabel Hasil Perhitungan Berat Isian Las Blok 06

<b>N O</b>	<b>ITEM PEKERJAAN</b>	<b>PANJANG LASAN (m)</b>	<b>VOLUME KAMPUH (m<sup>3</sup>)</b>	<b>MASSA JENIS ELEKTRODA (KG/m<sup>3</sup>)</b>	<b>BERAT ISIAN LASAN (kg)</b>
<b>(1)</b>	<b>(2)</b>	<b>(3)</b>	<b>(4)</b>	<b>(5)</b>	<b>(6)=(4)*(5)</b>
1	PANEL 1	48.16	0.001074256	<b>7850</b>	8.43
2	PANEL 2	9.81	0.000044145		0.35
3	PANEL 3	26.927	0.001354307		10.63
4	PANEL 4	92.236	0.000592806		4.65
5	PANEL 5	22.468	0.000126516		0.99
6	PANEL 6	98.584	0.001332871		10.46
7	SUB ASSEMBLY 1	94.843	0.000493994		3.88
8	SUB ASSEMBLY 2	57.014	0.000462647		3.63
9	SUB ASSEMBLY 3	12.646	0.000077963		0.61
10	SUB ASSEMBLY 4	15.746	9.63035E-05		0.76

<b>TOTAL</b>	<b>44.40</b>
--------------	--------------

Lampiran 1. 5 Lampiran 5 Tabel Hasil Perhitungan Berat Isian Las Blok 07

NO	ITEM PEKERJAAN	JUMLAH PANJANG LASAN (m)	VOLUME KAMPUH LASAN (m3)	MASSA JENIS ELEKTRODA (kg/m3)	BERAT ISIAN LASAN (kg)
(1)	(2)	(3)	(4)	(5)	(6)=(4)*(5)
1	PANEL 1	2.4	0.0000	7850	0.29
2	PANEL 2	0	0		0.00
3	PANEL 3	37.02	0.0018		14.21
4	PANEL 4	65.30	0.0006		4.79
5	PANEL 5	109.99	0.0023		17.77
6	PANEL 6	33.87	0.0002		1.62
7	PANEL 7	38.77	0.0002		1.70
8	SUB ASSEMBLY 1	28.70	0.0002		1.18
9	SUB ASSEMBLY 2	54.49	0.0003		2.50
10	SUB ASSEMBLY 3	7.52	0.0000		0.28
11	SUB ASSEMBLY 4	24.97	0.0001		0.95
12	SUB ASSEMBLY 5	19.77	0.0001		0.88
<b>TOTAL</b>		<b>422.78</b>	<b>0.0059</b>		<b>46.18</b>

Lampiran 1. 6 Tabel Berat Kebutuhan Penyediaan Elektroda Pada Pekerjaan Blok 06

NO	ITEM PEKERJAAN	PANJANG LASAN (m)	VOLUME KAMPUH (m <sup>3</sup> )	MASSA JENIS ELEKTRODA (KG/m <sup>3</sup> )	BERAT ISIAN LASAN (kg)	NILAI EFISIENSI	BERAT KEBUTUHAN ELEKTRODA
(1)	(2)	(3)	(4)	(5)	(6)=(4)*(5)	(7)	(8)=(6)/(7)
1	PANEL 1	48.16	0.001074256	7850	8.43	0.55	15.33256291
2	PANEL 2	9.81	0.000044145		0.35		0.630069545
3	PANEL 3	26.927	0.001354307		10.63		19.32965028
4	PANEL 4	92.236	0.000592806		4.65		8.460958364
5	PANEL 5	22.468	0.000126516		0.99		1.805728364
6	PANEL 6	98.584	0.001332871		10.46		19.02370913
7	SUB ASSEMBLY 1	94.843	0.000493994		3.88		7.0506345
8	SUB ASSEMBLY 2	57.014	0.000462647		3.63		6.603230569
9	SUB ASSEMBLY 3	12.646	0.000077963		0.61		1.112744636
10	SUB ASSEMBLY 4	15.746	9.63035E-05		0.76		1.374513591
<b>TOTAL</b>					<b>44.40</b>		<b>80.72380188</b>

Lampiran 1. 7 Tabel Berat Kebutuhan Penyediaan Elektroda Pada Pekerjaan Blok 07

NO	ITEM PEKERJAAN	JUMLAH PANJANG LASAN (m)	VOLUME KAMPUH LASAN (m <sup>3</sup> )	MASSA JENIS ELEKTRODA (kg/m <sup>3</sup> )	BERAT ISIAN LASAN (kg)	NILAI EFISIENSI	BERAT ELEKTRODA YANG DIBUTUHKAN
(1)	(2)	(3)	(4)	(5)	(6)=(4)*(5)	(7)	(8)=(6)*(7)
1	PANEL 1	2.4	0.0000	7850	0.29	0.55	0.529232727
2	PANEL 2	0	0		0.00		0
3	PANEL 3	37.02	0.0018		14.21		25.84533472
4	PANEL 4	65.30	0.0006		4.79		8.717950236
5	PANEL 5	109.99	0.0023		17.77		32.30928708
6	PANEL 6	33.87	0.0002		1.62		2.945220091
7	PANEL 7	38.77	0.0002		1.70		3.085592364
8	SUB ASSEMBLY 1	28.70	0.0002		1.18		2.152184545
9	SUB ASSEMBLY 2	54.49	0.0003		2.50		4.537471273
10	SUB ASSEMBLY 3	7.52	0.0000		0.28		0.508894091
11	SUB ASSEMBLY 4	24.97	0.0001		0.95		1.733508364
12	SUB ASSEMBLY 5	19.77	0.0001		0.88		1.599615909
<b>TOTAL</b>		<b>422.78</b>	<b>0.0059</b>		<b>46.18</b>		<b>83.9642914</b>

Lampiran 1. 8 Jumlah Dos Kawat Elektroda Pada Pekerjaan Blok 06 Dan Blok 07

NO	BLOCK	PERAT KEBUTUHAN ELEKTRODA (KG)	KAWAT ELEKTRODA LAS PER DOS	JUMLAH DOS
(1)	(2)	(3)	(4)	(5)=(3)/(4)
1	BLOK 06	80.72	5	16.14
2	BLOK 07	83.96		16.79