

## DAFTAR PUSTAKA

- Alm, A. & Bill, A., 1973. Ocular and optic nerve blood flow at normal and increased intraocular pressures in monkeys (*Macaca irus*): a study with radioactively labelled microspheres including flow determinations in brain and some other tissues. *Experimental eye research*, 1(15), pp. 15-29.
- Anon., n.d. [Online]  
Available at: [https://www2.ccrb.cuhk.edu.hk/stat/mean/tsmc\\_sup.htm#2](https://www2.ccrb.cuhk.edu.hk/stat/mean/tsmc_sup.htm#2)  
[Accessed 2 8 2021].
- Anonimus, 2021. *Wikipedia*. [Online]  
Available at: <https://id.wikipedia.org/wiki/Cokelat>  
[Accessed 7 May 2021].
- Atkinson, C., Banks, M., France, C. & McFadden, C., 2010. *The Chocolate and Coffe Bible*. Ingggris, Hermes House.
- Barteselli, G. et al., 2012. Choroidal volume variations with age, axial length, and sex in healthy subjects: a three-dimensional analysis. *Ophthalmology*, 119(2), pp. 2572-2578.
- Bill, A. & Sperber, G. O., 1990. Control of retinal and choroidal blood flow. *Eye*, Volume 4, pp. 319-325.
- Brezinski, M. E., 2006. *Optical coherence tomography: principles and applications*. London: Elsevier.
- Bruno, R. M. & Ghiadoni, L., 2018. Polyphenols, Antioxidants and the Sympathetic Nervous System. *Current Pharmaceutical Design*, 01 01, 24(2), pp. 130-139.
- Burleigh, R., 2002. *Chocolate: Riches from the Rainforest*. Chicago: Abrams Books for Young Readers.
- Chakraborty, R., Read, S. A. & Collins, M. J., 2011. Diurnal Variations in Axial Length, Choroidal Thickness, Intraocular Pressure, and Ocular Biometrics. *Investigative Ophthalmology & Visual Science*, pp. 5121-5129.
- Chakravarthy, U. et al., 2010. Clinical risk factors for age-related macular degeneration: a systematic review and meta-analysis. *BMC Ophthalmol*, Volume 10, p. 31.
- Chow, S.-C., Shao, J. & Wang, H., 2008. *Sample size calculaion in clinical research Second Edition*. 2nd ed. New York: Taylor & Francis Group, LLC.
- Cooke, J. P., Creafar, M. A., Osmundson, P. J. & Shepherd, J. T., 1990. Sex differences in control of cutaneous blood flow. *Circulation*, 82(5), pp. 1607-1615.
- Corti, R., Flammer, A. J., Hollenberg, N. K. & Lüscher, T. F., 2009. Cocoa and cardiovascular health. *Circulation*, 10(119), pp. 1433-1441.
- Crews Jr, W. D., Harrison, D. W. & Wright, J. W., 2008. A double-blind, placebo-controlled, randomized trial of the effects of dark chocolate & cocoa on variables associated with neuropsychological functioning and cardiovascular health: clinical findings from a sample of healthy, cognitively intact older adult. *The American journal of clinical nutrition*, 4(87), pp. 872-880.
- Desch, S. et al., 2010. Effect of cocoa products on blood pressure: Systematic review and meta-analysis. *Am. J. Hypertens*, 1(23), pp. 97-103.

- Ding, X. et al., 2011. Choroidal thickness in healthy Chinese subjects. *Investigative ophthalmology & visual science*, 52(1), pp. 9555-9560.
- Dong, J.-Y. et al., 2017. Japan Public Health Center-based Prospective Study Group. Chocolate consumption and risk of stroke among men and women: A large population-based, prospective cohort study. *Atherosclerosis*, Issue 260, pp. 8-12.
- Field, D. T., Williams, C. M. & Butler, L. T., 2011. Consumption of cocoa flavanols results in an acute improvement in visual and cognitive functions. *Physiol Behav*, 3-4(103), pp. 255-260.
- Fitzgerald, M. E., Vana, B. A. & Reiner, A., 1990. Control of choroidal blood flow by the nucleus of Edinger-Westphal in pigeons: a laser Doppler study. *Invest Ophthalmol Vis Sci*, 31(12), pp. 2438-2492.
- Flammer, A. J. et al., 2012. Cardiovascular effects of flavanol-rich chocolate in patients with heart failure. *European Heart Journal*, 17(33), pp. 2172-2180.
- Flugel-Koch, C., May, C. A. & Lütjen-Drecoll, E., 1996. Presence of a contractile cell network in the human choroid. *Ophthalmologica*, 5(210), pp. 296-302.
- Francis, S., Head, K., Morris, P. & Macdonald, I., 2006. The effect of flavanol-rich cocoa on the fMRI response to a cognitive task in healthy young people. *Journal of cardiovascular pharmacology*, Issue 47, pp. 215-220.
- Fujiwara, T., Imamura, Y., Giovinazzo, V. J. & Spaide, R. F., 2010. Fundus autofluorescence and optical coherence tomographic findings in acute zonal occult outer retinopathy. *Retina*, 8(30), pp. 1206-1216.
- Gammone, M. A. et al., 2018. Impact of chocolate on the cardiovascular health. *Frontiers in bioscience (Landmark edition)*, Issue 23, pp. 852-864.
- Geiser, M. H., Bovin, M. & Quibel, O., 2004. Corneal and retinal temperatures under various ambient conditions: a model and experimental approach. *Klinische Monatsblätter für Augenheilkunde*, 5(221), pp. 311-314.
- Greenberg, J. A. et al., 2018. Chocolate intake and heart disease and stroke in the Women's Health Initiative: A prospective analysis. *The American journal of clinical nutrition*, 1(108), pp. 41-48.
- Guglielmone, R. & Cantino, D., 1982. Autonomic innervation of the ocular choroid membrane in the chicken: a fluorescence-histochemical and electron-microscopic study. *Cell Tissue Res*, 222(2), pp. 417-431.
- Guyer, D. R., Schachat, A. P. & Green, W. R., 2006. The choroid: structural considerations. In: R. SJ, ed. *Retina*. 4 ed. Philadelphia, PA,: Mosby, pp. 34-41.
- Hayreh, S. S., 2001. The blood supply of the optic nerve head and the evaluation of itdmyth and reality. *Prog Retin Eye Res*, 5(20), pp. 563-593.
- Hooper, L. et al., 2012. Effects of chocolate, cocoa, and flavan-3-ols on cardiovascular health: A systematic review and meta-analysis of randomized trials. *The American journal of clinical nutrition*, 3(95), pp. 740-751.
- Hoz, A. d. et al., 2008. Substance P and calcitonin gene-related peptide intrinsic choroidal neurons in human choroidal whole-mounts. *Histol Histopathol*, Issue 23, pp. 1249-1258.

- ICCO, 2014. *International Cocoa Organization*. [Online]  
Available at: <https://www.icco.org/>  
[Accessed 14 oktober 2020].
- Ikuno, Y., Kawaguchi, K., Nouchi, T. & Yasuno, Y., 2010. Choroidal Thickness in Healthy Japanese Subjects. *Investigative ophthalmology & visual science*, 51(4), pp. 2173-2176.
- Khawaja, O. et al., 2016. Chocolate Consumption and Risk of Atrial Fibrillation (from the Physicians' Health Study). *The American journal of cardiology*, 4(116), p. 563–566.
- Kim, S.-W. et al., 2011. Comparison Of Choroidal Thickness Among Patients With Healthy Eyes, Early Age-Related Maculopathy, Neovascular Age-Related Macular Degeneration, Central Serous Chorioretinopathy, And Polypoidal Choroidal Vasculopathy. *Retina*, 31(9), pp. 1904-1911.
- Kwok, C. S. et al., 2016. Habitual chocolate consumption and the risk of incident heart failure among healthy men and women. *Nutrition, Metabolism and Cardiovascular Diseases*, 8(26), p. 722–734.
- Larsson, S. C., Akesson, A., Gigante, B. & Wolk, A., 2016. Chocolate consumption and risk of myocardial infarction: A prospective study and meta-analysis. *Heart*, 13(102), pp. 1017-1022.
- Latif, R., 2013. Chocolate/cocoa and human health: A review. *Neth. J. Med*, 2(71), pp. 63-68.
- Liegl, R. & Ulbig, M. W., 2014. Central serous chorioretinopathy. *Ophthalmologica*, 232(2), pp. 65-76.
- Lindner, M. W., Andretzky, P., Kiesewetter, F. & Hausler, G., 2002. Spectral radar: optical coherence tomography in the Fourier domain. In: *Handbook of optical coherence tomography*. s.l.:s.n., pp. 335-357.
- Li, X. Q., Larsen, M. & Munch, I. C., 2011. Subfoveal choroidal thickness in relation to sex and axial length in 93 Danish university students. *Invest Ophthalmol Vis Sci*, 52(11), pp. 8438-8441.
- Lütjen-Drecoll, E., 2006. Choroidal innervation in primate eyes. *Experimental eye research*, 3(82), pp. 357-361.
- Mäepea, O., 1992. Pressures in the anterior ciliary arteries, choroidal veins and choriocapillaris. *Experimental eye research*, 5(54), pp. 731-736.
- Magrone, T., Russo, M. A. & Jirillo, E., 2017. Cocoa and dark chocolate polyphenols: From biology to clinical application. *Frontiers in Immunology*, Issue 8, p. 677.
- Maloca, P., Gyger, C. & Hasler, P. W., 2012. A pilot study to image the vascular network of small melanocytic choroidal tumors with speckle noise-free 1050-nm swept source optical coherence tomography (OCT choroidal angiography). *Graefes Arch Clin Exp Ophthalmol*, 6(254), pp. 1201-1210.
- Manach, C. & Donovan, J. L., 2004. Pharmacokinetics and metabolism of dietary flavonoids in humans. *Free radical research*, 8(38), pp. 771-786.
- Mann, R. M. et al., 1995. Nitric oxide and choroidal blood flow regulation. *Investigation Ophthalmology Visua. Sciene*, 36(5), pp. 925-930.

- Margolis, R. & Spaide, R. F., 2009. A pilot study of enhanced depth imaging optical coherence tomography of the choroid in normal eyes. *American journal of ophthalmology*, 147(5), pp. 811-815.
- May, C. A., 2005. Non-vascular smooth muscle cells in the human choroid: distribution, development and further characterization. *Journal of Anatomy*, 4(207), pp. 381-390.
- Meng, C. C., Jalil, A. M. M. & Ismail, A., 2009. Phenolic and theobromine contents of commercial dark, milk, and white chocolates on the Malaysian market. *Molecules*, 1(14), pp. 200-209.
- Montagna, M. T. et al., 2019. Chocolate, "Food of the Gods": History, Science, and Human Health. *Int J Environ Res Public Health*, 24(16), pp. 4960-4981.
- Mrejen, S. & Spaide, R. F., 2013. Optical coherence tomography: Imaging of the choroid and beyond. *Survey of ophthalmology*, 5(58), pp. 387-429.
- Nakayama, M. et al., 2012. Enhanced Depth Imaging Optical Coherence Tomography Of The Choroid In Vogt–Koyanagi–Harada Disease. *Retina*, 32(10), pp. 2061-2069.
- Nickla, D. L. & Wallman, J., 2010. The multifunctional choroid. *Progress in retinal and eye research*, 2(29), pp. 144-168.
- Ooto, S., Hangai, M. & Yashimura, N., 2015. Effects of sex and age on the normal retinal and choroidal structures on optical coherence tomography. *Curr Eye Res*, 40(2), pp. 213-225.
- Osmanbasoglu, O. A. et al., 2013. Diurnal Choroidal Thickness Changes in Normal Eyes of Turkish People Measured by Spectral Domain Optical Coherence Tomography. *Journal of Ophthalmology*, Volume 2013, p. e687165.
- Park, K.-A. & Oh, S. Y., 2014. An optical coherence tomography-based analysis of choroidal morphologic features and choroidal vascular diameter in children and adults. *American journal of ophthalmology*, 158(4), pp. 716-723.
- Parver, L. M., Aufer, C. & Carpenter, D. O., 1980. Choroidal blood flow as a heat dissipating mechanism in the macula. *American journal of ophthalmology*, 5(89), pp. 641-646.
- Pereira, T. et al., 2019. Randomized study of the effects of cocoa-rich chocolate on the ventricle-arterial coupling and vascular function of young, healthy adults. *Nutrition*, 5(63–64), p. 175–183.
- Petyaev, I. M. & Bashmakov, Y. K., 2017. Dark chocolate: Opportunity for an alliance between medical science and the food industry?. *Front. Nutr*, Issue 4, p. 43.
- Polska, E. et al., 2007. Regulation of choroidal blood flow during combined changes in intraocular pressure and arterial blood pressure. *Investigative ophthalmology & visual science*, 8(48), pp. 3768-3774.
- Powis, T. G. et al., 2011. Cacao use and the San Lorenzo Olmec. *Proceedings of the National Academy of Science*, 21(108), pp. 8595-8600.
- Querques, G. et al., 2012. Enhanced Depth Imaging Optical Coherence Tomography in Type 2 Diabetes. *Investigative ophthalmology and visual science*, 53(10), pp. 6017-6024.


- Rabin, J. C., Karunathilake, N. & Patrizi, K., 2018. Effects of Milk vs Dark Chocolate Consumption on Visual Acuity and Contrast Sensitivity Within 2 Hours: A Randomized Clinical Trial. *JAMA Ophthalmol*, Issue 6, pp. 678-681.
- Rabin, J. et al., 2020. Effect of dark vs. white chocolate on the multifocal electroretinogram. *Eye*, Issue <https://doi.org/10.1038/s41433-019-0757-8>.
- Ramrattan, R. S. et al., 1994. Morphometric analysis of Bruch's membrane, the choriocapillaris, and the choroid in aging. *Investigative ophthalmology & visual science* 35.6 (1994): 2857-2864, 35(6), pp. 2857-2864.
- Reid, K. et al., 2010. Does chocolate reduce blood pressure? A meta-analysis. *BMC Med*, Volume 8.
- Ren, Y. et al., 2019. Chocolate consumption and risk of cardiovascular diseases: A meta-analysis of prospective studies. *Heart*, 1(105), pp. 49-55.
- Resch, H. et al., 2009. Endothelial dysfunction in glaucoma. *Acta Ophthalmologica*, 1(87), pp. 4-12.
- Ruiz-Medrano, J. et al., 2014. Macular choroidal thickness profile in a healthy population measured by swept-source optical coherence tomography. *Invest Ophthalmol Vis Sci*, 55(6), pp. 3532-3542.
- Rusconi, M. & Conti, A., 2010. Theobroma cacao L., the Food of the Gods: A scientific approach beyond myths and claims. *Pharmacological research*, 1(61), pp. 5-13.
- Rutnin, U. & Schepens, C. L., 1967. Fundus appearance in normal eyes. II. The standard peripheral fundus and developmental variations. *American journal of ophthalmology*, 5(64), pp. 840-852.
- Sanchez-Cano, A. et al., 2014. Choroidal thickness and volume in healthy young white adults and the relationships between them and axial length, ametropia and sex. *Am J Ophthalmol*, 158(3), pp. 574-583.e1.
- Santiago-Rodríguez E, E.-Z. B. Z.-U. E., 2018. Effects of dark chocolate intake on brain electrical oscillations in healthy people. *Foods*, 7(11), p. 187.
- Santiago-Rodríguez, E., Estrada-Zaldívar, B. & Zaldívar-Urbe, E., 2018. Effects of dark chocolate intake on brain electrical oscillations in healthy people. *Foods*, 7(11), p. 187.
- Scholey, A. et al., 2010. Consumption of cocoa flavanols results in acute improvements in mood and cognitive performance during sustained mental effort. *Journal of Psychopharmacology*, 10(24), pp. 1505-1514.
- Schroedl F, B. A. N. W. e. a., 2008. The normal human choroid is endowed with a significant number of lymphatic vessel endothelial hyaluronate receptor 1 (LYVE-1)-positive macrophages. *Investigative ophthalmology & visual science*, 12(49), pp. 5222-5229.
- Siedlecki, J. et al., 2019. Effects of Flavanol-Rich Dark Chocolate on Visual Function and Retinal Perfusion Measured With Optical Coherence Tomography Angiography: A Randomized Clinical Trial. *JAMA Ophthalmology*, 12(137), pp. 1373-1379.
- Sızmaz, S. et al., 2013. The effect of smoking on choroidal thickness measured by optical coherence tomography. *BMJ*, 97(5), pp. 601-604.

- Spaide, R. F., Koizumi, H. & Pozzoni, M. C., 2008. Enhanced Depth Imaging Spectral-Domain Optical Coherence Tomography. *American journal of ophthalmology*, 4(146), p. 496–500.
- Steinhaus, D. A. et al., 2017. Chocolate intake and incidence of heart failure: Findings from the Cohort of Swedish Men. *American heart journal*, Issue 183, pp. 18-23.
- Sumiyoshi, E. et al., 2019. Sub-Chronic Consumption of Dark Chocolate Enhances Cognitive Function and Releases Nerve Growth Factors: A Parallel-Group Randomized Trial. *Nutrients*, 11(11), p. 2800.
- Syadullah, M., 2012. Dampak kebijakan bea keluar terhadap ekspor dan industri pengolahan kakao. *Buletin Ilmiah Litbang Perdagangan*, 6(1), pp. 53-58.
- Tan, C. S., Ouyang, Y., Ruiz, H. & Sada, S. R., 2012. Diurnal Variation of Choroidal Thickness in Normal, Healthy Subjects Measured by Spectral Domain Optical Coherence Tomography. *Investigative Ophthalmology & Visual Science*, pp. 261-266.
- Terai, N. et al., 2014. The short-term effect of flavonoid-rich dark chocolate on retinal vessel diameter in glaucoma patients and age-matched controls. *Acta Ophthalmologica*, 5(92), pp. e341-e345.
- Toyokawa, N., Kimura, H., Fukumoto, A. & Kuroda, S., 2012. Difference in morning and evening choroidal thickness in Japanese subjects with no chorioretinal disease. *Ophthalmic Surg Lasers Imaging*, 2(43), pp. 109-114.
- Tuncer, I. et al., 2015. Choroidal thickness in relation to sex, age, refractive error, and axial length in healthy Turkish subjects. *Int Ophthalmol*, 35(3), pp. 403-410.
- Usui, S. et al., 2012. Circadian changes in subfoveal choroidal thickness and the relationship with circulatory factors in healthy subjects. *Investigative ophthalmology & visual science*, 4(53), pp. 2300-2307.
- Vence, S., Imamura, Y. & Freund, B. K., 2011. THE EFFECTS OF SILDENAFIL CITRATE ON CHOROIDAL THICKNESS AS DETERMINED BY ENHANCED DEPTH IMAGING OPTICAL COHERENCE TOMOGRAPHY. *Retina*, 31(2), pp. p332-335.
- Verna, R., 2013. The history and science of chocolate. *The Malaysian journal of pathology*, 2(35), pp. 111-121.
- Vurak, A. D. et al., 2014. Choroidal thickness changes after a single administration of coffee in healthy subjects. *Retina*, 34(6), pp. 1223-1228.
- Wang, R. K., 2007. Fourier domain optical coherence tomography achieves full range complex imaging in vivo by introducing a carrier frequency during scanning. *Physics in Medicine & Biology*, 19(52), p. 5897.
- Wangsa-Wirawan, N. D. L. R. A., 2003. Retinal oxygen: fundamental and clinical aspects. *Archives of ophthalmology*, 4(121), pp. 547-557.
- Wei, W. B. et al., 2013. Subfoveal choroidal thickness: the Beijing Eye Study. *Ophthalmology*, 120(1), pp. 175-180.
- Wimpfing, B. et al., 2004. Response of choroidal blood flow to carbogen breathing in smokers and non-smokers. *Br J Ophthalmol*, 88(6), pp. 776-781.


- Wollgast, J. & Anklam, E., 2000. Review on polyphenols in *Theobroma cacao*: Changes in composition during the manufacture of chocolate and methodology for identification and quantification. *Food Research International*, 6(33), pp. 423-442.
- Zeng, J. et al., 2012. [Relationship between gender and posterior pole choroidal thickness in normal eyes]. *Zhonghua Yan ke Za Zhi*, 48(12), pp. 1093-1096.

## LAMPIRAN

### 1. Rekomendasi Persetujuan Etik



**KEMENTERIAN PENDIDIKAN, KEBUDAYAAN, RISET DAN TEKNOLOGI**  
**UNIVERSITAS HASANUDDIN FAKULTAS KEDOKTERAN**  
**KOMITE ETIK PENELITIAN KESEHATAN**  
**RSPTN UNIVERSITAS HASANUDDIN**  
**RSUP Dr. WAHIDIN SUDIROHUSODO MAKASSAR**  
 Sekretariat : Lantai 2 Gedung Laboratorium Terpadu  
 JL.PERINTIS KEMERDEKAAN KAMPUS TAMALANREA KM.10 MAKASSAR 90245.  
 Contact Person: dr. Agussalim Bukhari.,MMed,PhD, SpGK. TELP. 081241850658, 0411 5780103, Fax : 0411-581431



**REKOMENDASI PERSETUJUAN ETIK**  
 Nomor : 12/UN4.6.4.5.31/ PP36/ 2022

Tanggal: 12 Januari 2022

Dengan ini Menyatakan bahwa Protokol dan Dokumen yang Berhubungan Dengan Protokol berikut ini telah mendapatkan Persetujuan Etik :

No Protokol	UH21090575		No Sponsor	
Peneliti Utama	<b>dr. La Ode Hamzah Rachmat</b>		Sponsor	
Judul Peneliti	Perbandingan Pengaruh Antara Konsumsi Sewaktu Dark Chocolate Dan Milk Chocolate Pada Ketebalan Koroid Pada Sampel Sehat Usia Muda			
No Versi Protokol	2	Tanggal Versi	11 Januari 2022	
No Versi PSP	2	Tanggal Versi	11 Januari 2022	
Tempat Penelitian	RS Universitas Hasanuddin Makassar			
Jenis Review	<input type="checkbox"/> Exempted <input type="checkbox"/> Expedited <input checked="" type="checkbox"/> Fullboard Tanggal 13 Oktober 2021	Masa Berlaku	12 Januari 2022 sampai 12 Januari 2023	Frekuensi review lanjutan
Ketua KEPK FKUH RSUH dan RSWS	Nama <b>Prof.Dr.dr. Suryani As'ad, M.Sc.,Sp.GK (K)</b>	Tanda tangan		
Sekretaris KEPK FKUH RSUH dan RSWS	Nama <b>dr. Agussalim Bukhari, M.Med.,Ph.D.,Sp.GK (K)</b>	Tanda tangan		

Kewajiban Peneliti Utama:

- Menyerahkan Amandemen Protokol untuk persetujuan sebelum di implementasikan
- Menyerahkan Laporan SAE ke Komisi Etik dalam 24 jam dan dilengkapi dalam 7 hari dan Lapo SUSAR dalam 72 Jam setelah Peneliti Utama menerima laporan
- Menyerahkan Laporan Kemajuan (progress report) setiap 6 bulan untuk penelitian resiko tinggi dan setiap setahun untuk penelitian resiko rendah
- Menyerahkan laporan akhir setelah Penelitian berakhir
- Melaporkan penyimpangan dari prokol yang disetujui (protocol deviation / violation)
- Mematuhi semua peraturan yang ditentukan



## 2. Formulir Persetujuan

### FORMULIR PERSETUJUAN

Saya yang bertanda tangan di bawah ini :

Nama : ..... Umur : ..... tahun

Alamat : .....

Telepon/HP : .....

Menyatakan bersedia untuk berpartisipasi pada penelitian ini yang berjudul :

**“Perbandingan Pengaruh Antara Konsumsi Sewaktu *Dark Chocolate* Dan *Milk Chocolate* Pada Ketebalan Koroid Pada Sampel Sehat Usia Muda“**

setelah mendengar/membaca dan mengerti penjelasan yang diberikan mengenai tujuan dan manfaat yang akan didapatkan pada penelitian ini, khususnya bagi kemajuan ilmu kedokteran.

**Nama**

**Tanda tangan**

**Tgl/Bln/Thn**

Responden ..... ..

Penanggung jawab penelitian :

dr. La Ode Hamzah Rachmat  
Jl. Berua Raya Komp Sikamasseang Blok C/2 Daya  
Telp. 0852 5678 2183

Penanggung jawab medik :

Dr. dr. Yunita, Sp.M(K), M.Kes  
Jl. Bangkala Dalam II/144 P Antang  
Telp. 0821 8833 3370

DISETUJUI OLEH KOMISI PENELITIAN  
KESEHATAN FAKULTAS  
KEDOKTERAN UNHAS  
TGL 12 JANUARI 2021

### 3. Data Subjek Hasil Penelitian

Data kelompok A (DC-MC)

No	Sex	Umur	VisusOD	VisusOS	RE_OD	RE_OS	TIO_OD	TIO_OS	WashOut
1	P	33	20/20	20/20	0,00	0,00	11	10	7
2	P	34	20/20	20/20	-0,75	0,00	12	14	7
3	P	29	20/20	20/20	0,00	0,00	16	18	7
4	P	28	20/20	20/20	0,00	0,00	17	15	7
5	P	29	20/20	20/20	-4,50	-4,50	12	12	7
6	P	27	20/20	20/20	-4,75	-5,25	12	13	7
7	P	31	20/20	20/20	0,00	0,00	14	13	6
8	P	33	20/20	20/20	0,00	0,00	13	12	7
9	P	26	20/20	20/20	-0,75	-1,25	15	14	7
10	P	30	20/20	20/20	0,00	0,00	15	13	6
11	L	34	20/20	20/20	0,00	0,00	13	15	7
12	P	27	20/20	20/20	0,00	0,00	17	16	7
13	P	32	20/20	20/20	0,00	0,00	14	16	7
14	P	36	20/20	20/20	-0,50	-0,50	18	12	7
15	L	32	20/20	20/20	0,00	0,00	12	14	6
16	P	32	20/20	20/20	0,00	0,00	11	11	7
17	P	29	20/20	20/20	0,00	0,00	12	12	7
18	L	29	20/20	20/20	0,00	0,00	14	13	7
19	P	31	20/20	20/20	0,00	0,00	16	14	7
20	P	29	20/20	20/20	0,00	0,00	14	15	7

Data Tekanan darah (mmHg) Kelompok A (DC-MC)

No	Sis1	Dias1	Sis30	Dias30	Sis2jam	Dias2jam	Sis1x	Dias1x	Sis30x	Dias30x	Sis2jamx	Dias2jamx
1	93,00	63,00	93,33	62,67	100,33	67,67	100,33	66,00	97,00	64,67	98,33	64,00
2	101,00	70,33	113,33	75,33	101,67	68,00	112,33	79,33	98,67	68,33	112,67	76,33
3	108,00	77,00	103,33	73,33	92,67	62,67	108,00	77,00	103,33	73,67	92,67	62,67
4	104,33	74,33	99,33	69,33	105,00	75,00	102,00	72,00	98,00	68,00	94,00	64,00
5	103,67	73,67	105,00	75,00	100,33	70,33	103,67	73,67	105,00	75,00	100,33	70,33
6	90,00	60,00	94,00	64,33	95,67	65,67	96,33	66,33	100,00	70,00	106,67	76,67
7	108,00	78,00	94,33	64,33	114,67	72,33	102,33	72,33	94,67	64,67	92,67	65,33
8	95,67	67,33	90,67	60,67	94,67	64,00	102,33	71,00	94,67	63,67	96,67	66,67
9	101,33	71,33	100,00	70,00	100,00	70,00	107,33	76,33	95,67	65,67	105,00	73,67
10	93,67	63,67	91,33	61,33	93,67	63,67	90,00	60,00	91,00	61,00	91,00	61,00
11	130,00	90,00	136,67	93,33	131,00	89,00	129,33	86,00	133,33	85,00	133,33	84,00
12	90,00	70,00	99,00	69,00	91,00	61,00	105,00	72,67	91,67	61,67	90,33	60,33
13	95,00	60,67	95,00	65,00	90,00	60,00	90,00	60,00	90,67	60,67	92,33	61,67
14	102,00	72,00	100,33	70,33	98,33	67,33	98,33	64,00	100,33	69,33	90,33	60,33
15	101,00	70,33	113,33	75,33	101,67	68,00	112,33	79,33	98,67	68,33	112,67	76,33
16	108,00	77,00	103,33	73,33	92,67	62,67	108,00	77,00	103,33	73,67	92,67	62,67
17	104,33	74,33	99,33	69,33	105,00	75,00	102,00	72,00	98,00	68,00	94,00	64,00
18	103,67	73,67	105,00	75,00	100,33	70,33	103,67	73,67	105,00	75,00	100,33	70,33
19	90,00	60,00	94,00	64,33	95,67	65,67	96,33	66,33	100,00	70,00	106,67	76,67
20	108,00	78,00	94,33	64,33	114,67	72,33	102,33	72,33	94,67	64,67	92,67	65,33

Data OCT ( $\mu\text{m}$ ) Kelompok A (DC-MC)

No	OCTOD	OCTOS	OCT300D	OCT300S	OCT20D	OCT20S	OCTODX	OCTOSx	OCT300Dx	OCT300Sx	OCT20Dx
1	280	271	276	282	280	293	278	274	276	276	274
2	319	296	331	307	364	329	374	373	372	375	372
3	298	294	311	313	315	322	296	289	296	295	307
4	304	289	324	326	333	331	294	302	300	309	309
5	319	316	331	329	344	340	302	311	308	318	315
6	300	305	318	318	327	335	292	298	307	305	324
7	291	294	301	300	318	320	296	289	296	295	307
8	300	313	322	329	329	331	305	315	311	317	315
9	325	329	333	337	338	340	318	311	319	311	331
10	276	265	296	281	300	313	270	267	289	271	292
11	294	295	309	315	312	322	294	294	298	300	302
12	408	372	414	381	429	385	401	373	403	377	403
13	300	298	300	307	302	315	298	295	337	320	344
14	376	378	392	389	403	401	371	376	371	369	371
15	319	296	331	307	364	329	374	373	372	375	372
16	298	294	311	313	315	322	296	289	296	295	307
17	304	289	324	326	333	331	294	302	300	309	309
18	319	316	331	329	344	340	302	311	308	318	315
19	300	305	318	318	327	335	292	298	307	305	324
20	291	294	301	300	318	320	296	289	296	295	307

Data Kelompok B (MC-DC)

No.	Grup	Sex	Umur	VisusOD	VisusOS	RE_OD	RE_OS	TIO_OD	TIO_OS	WashOut
1	B	1	30	20/20	20/20	0,00	0,00	13	12	7
2	B	2	30	20/20	20/20	0,00	0,00	15	14	6
3	B	2	30	20/20	20/20	-1,00	-1,25	15	13	7
4	B	1	29	20/20	20/20	0,00	0,00	13	15	7
5	B	2	33	20/20	20/20	0,00	0,00	17	16	7
6	B	1	29	20/20	20/20	0,00	0,00	18	12	7
7	B	2	33	20/20	20/20	0,00	0,00	12	14	7
8	B	2	33	20/20	20/20	-3,25	-2,75	11	11	7
9	B	1	31	20/20	20/20	0,00	0,00	12	12	7
10	B	2	33	20/20	20/20	0,00	0,00	12	14	7
11	B	2	32	20/20	20/20	0,00	0,00	16	18	7
12	B	2	32	20/20	20/20	0,00	0,00	17	15	7
13	B	2	31	20/20	20/20	0,00	0,00	12	12	7
14	B	1	32	20/20	20/20	0,00	0,00	12	13	7
15	B	1	34	20/20	20/20	0,00	0,00	14	13	6
16	B	2	27	20/20	20/20	0,00	0,00	13	12	7
17	B	2	29	20/20	20/20	0,00	0,00	12	14	7
18	B	1	29	20/20	20/20	0,00	0,00	11	11	7
19	B	2	31	20/20	20/20	0,00	0,00	12	12	7
20	B	2	29	20/20	20/20	0,00	0,00	12	14	7

Data Tekanan Darah (mmHg) Kelompok B (MC-DC)

No.	Sis1	Dias1	Sis30	Dias30	Sis2jam	Dias2jam	Sis1x	Dias1x	Sis30x	Dias30x	Sis2jamx	Dias2jamx
1	100,33	61,00	105,67	75,67	100,33	61,00	98,33	66,33	100,33	69,33	90,33	60,33
2	97,33	67,33	98,67	66,33	102,67	68,00	112,33	79,33	98,67	68,33	112,67	78,33
3	90,00	60,00	90,00	60,00	90,00	60,00	94,00	64,00	97,00	66,00	97,00	66,00
4	118,67	78,00	118,33	72,00	114,67	72,33	115,33	80,33	115,00	72,00	114,67	72,33
5	107,33	75,33	112,33	76,33	104,00	71,33	106,67	73,00	115,00	68,00	98,67	72,67
6	108,00	77,33	108,33	73,00	99,00	67,67	118,00	83,67	118,33	82,67	104,67	73,67
7	103,33	70,00	107,67	72,00	99,00	69,00	98,00	66,67	102,67	72,00	103,67	73,33
8	96,00	65,00	96,33	66,33	102,33	72,00	102,00	71,67	101,33	71,00	93,33	63,33
9	113,00	75,00	109,33	70,00	110,33	62,67	116,67	79,00	121,00	82,67	120,67	76,67
10	126,00	77,33	107,33	75,33	102,33	69,67	104,33	72,33	102,67	72,67	109,33	73,00
11	108,00	77,33	102,67	69,00	108,00	78,00	107,67	77,67	102,00	71,33	105,67	74,33
12	91,67	61,33	91,33	61,33	90,00	60,00	94,67	65,00	101,33	62,33	93,33	63,33
13	90,00	60,00	90,00	60,00	90,00	60,00	90,67	60,67	90,00	60,00	92,33	62,33
14	91,33	61,33	99,33	66,67	92,33	61,67	92,33	61,00	99,33	68,67	95,33	63,00
15	109,00	71,33	101,67	69,00	93,00	63,00	91,33	61,33	109,33	75,33	93,00	63,00
16	97,67	67,00	94,67	64,67	90,67	60,67	91,00	60,67	107,00	71,00	90,00	60,00
17	108,00	77,33	108,33	73,00	99,00	67,67	118,00	83,67	118,33	82,67	104,67	73,67
18	103,33	70,00	107,67	72,00	99,00	69,00	98,00	66,67	102,67	72,00	103,67	73,33
19	96,00	65,00	96,33	66,33	102,33	72,00	102,00	71,67	101,33	71,00	93,33	63,33
20	113,00	75,00	109,33	70,00	110,33	62,67	116,67	79,00	121,00	82,67	120,67	76,67

Data OCT ( $\mu\text{m}$ ) Kelompok B (MC-DC)

No.	OCTOD	OCTOS	OCT30OD	OCT30OS	OCT2OD	OCT2OS	OCTODX	OCTOSx	OCT30ODx	OCT30OSx	OCT2ODx
1	369	360	373	360	389	357	424	399	446	306	408
2	361	368	361	364	361	361	376	378	392	389	403
3	304	307	307	306	309	311	309	305	313	315	313
4	331	335	335	338	341	346	331	335	345	342	351
5	281	274	281	278	285	281	281	293	293	320	328
6	315	335	316	335	324	342	322	329	342	344	364
7	371	376	371	369	371	371	376	378	392	389	403
8	329	320	329	322	333	322	340	333	342	345	355
9	327	320	329	320	329	327	333	334	335	340	351
10	324	293	327	294	330	294	320	329	331	331	355
11	300	305	300	305	304	316	296	305	307	313	315
12	298	305	300	305	304	316	296	305	307	313	315
13	298	295	337	320	344	337	300	298	300	307	302
14	313	311	324	315	329	324	313	315	329	327	342
15	278	280	295	289	300	313	270	267	289	271	292
16	260	263	267	263	267	267	265	260	276	273	283
17	315	335	316	335	324	342	322	329	342	344	364
18	371	376	371	369	371	371	376	378	392	389	403
19	329	320	329	322	333	322	340	333	342	345	355
20	327	320	329	320	329	327	333	334	335	340	351

## 4. Output Hasil Penelitian

### Karakteristik subjek

Descriptive Statistics						
	N	Range	Minimum	Maximum	Mean	Std. Deviation
Umur	40	10	26	36	30.70	2.289
Refraktif Error Mata Kana	40	4.75	-4.75	.00	-.3875	1.12937
REfraktif Error Mata Kiri	40	5.25	-5.25	.00	-.3875	1.16293
Tekanan Bola Mata Kanan	40	7	11	18	13.68	2.105
Tekanan Bola Mata Kiri	40	8	10	18	13.48	1.811
Valid N (listwise)	40					

Jenis Kelamin					
		Frequency	Percent	Valid Percent	Cumulative Percent
Valid	Laki-laki	3	15.0	15.0	15.0
	Perempuan	17	85.0	85.0	100.0
	Total	20	100.0	100.0	

### Jarak wash out Kelompok A

Descriptive Statistics					
	N	Minimum	Maximum	Mean	Std. Deviation
Waktu Cross Over	20	6	7	6.85	.366
Valid N (listwise)	20				

### Jarak wash out Kelompok B

Descriptive Statistics					
	N	Minimum	Maximum	Mean	Std. Deviation
Waktu Cross Over	20	6	7	6.90	.308
Valid N (listwise)	20				

### Perubahan ketebalan koroid

Report				
Jenis Cokelat		OCT Awal	OCT 30 Menit	OCT 2 Jam
DC	Mean	317.38	328.43	340.83
	N	80	80	80
	Std. Deviation	34.575	33.515	33.724
	Minimum	260	271	272
	Maximum	424	446	429
	Range	164	175	157
MC	Mean	315.89	320.29	325.81
	N	80	80	80



	Std. Deviation	33.155	30.831	29.456
	Minimum	260	263	267
	Maximum	401	403	403
	Range	141	140	136
Total	Mean	316.63	324.36	333.32
	N	160	160	160
	Std. Deviation	33.774	32.358	32.448
	Minimum	260	263	267
	Maximum	424	446	429
	Range	164	183	162

## Distribusi data

### Tests of Normality

	Kolmogorov-Smirnov <sup>a</sup>			Shapiro-Wilk		
	Statistic	df	Sig.	Statistic	df	Sig.
OCT Awal DC	.140	80	.001	.914	80	.000
OCT 30 Menit DC	.173	80	.000	.911	80	.000
OCT 2 Jam DC	.106	80	.026	.957	80	.008
OCT Awal MC	.141	80	.000	.909	80	.000
OCT 30 Menit MC	.129	80	.002	.935	80	.001
OCT 2 Jam MC	.112	80	.015	.959	80	.011

a. Lilliefors Significance Correction

## Uji Wilcoxon

### Test Statistics<sup>a</sup>

	OCT 30 Menit DC - OCT Awal DC	OCT 2 Jam DC - OCT Awal DC	OCT 2 Jam DC - OCT 30 Menit DC	OCT 30 Menit MC - OCT Awal MC	OCT 2 Jam MC - OCT Awal MC	OCT 2 Jam MC - OCT 30 Menit MC
Z	-7.255 <sup>b</sup>	-7.639 <sup>b</sup>	-7.292 <sup>b</sup>	-5.200 <sup>b</sup>	-6.781 <sup>b</sup>	-6.669 <sup>b</sup>
Asymp. Sig. (2- tailed)	.000	.000	.000	.000	.000	.000

a. Wilcoxon Signed Ranks Test

b. Based on negative ranks.

### Independent Samples Test

		Levene's Test for Equality of Variances					t-test for Equality of Means		95% Confidence Interval of the Difference	
		F	Sig.	t	df	Sig. (2-tailed)	Mean Difference	Std. Error Difference	Lower	Upper
OCT Awal	Equal variances assumed	.001	.969	.278	158	.782	1.488	5.356	-9.090	12.065
	Equal variances not assumed			.278	157.723	.782	1.488	5.356	-9.091	12.066

### Paired Samples Statistics

		Mean	N	Std. Deviation	Std. Error Mean
Pair 1	OCT DC	317.38	80	34.575	3.866
	OCT 30 Menit DC	328.43	80	33.515	3.747
Pair 2	OCT DC	317.38	80	34.575	3.866
	OCT 2 Jam DC	340.83	80	33.724	3.771
Pair 3	OCT 30 Menit DC	328.43	80	33.515	3.747
	OCT 2 Jam DC	340.83	80	33.724	3.771
Pair 4	OCT MC	315.89	80	33.155	3.707
	OCT 30 Menit MC	320.29	80	30.831	3.447
Pair 5	OCT MC	315.89	80	33.155	3.707
	OCT 2 Jam MC	325.81	80	29.456	3.293
Pair 6	OCT 30 Menit MC	320.29	80	30.831	3.447
	OCT 2 Jam MC	325.81	80	29.456	3.293

### Paired Samples Test

Paired Differences

		Mean	Std. Deviation	Std. Error Mean	95% Confidence Interval of the Difference		t	df	Sig. (2-tailed)
					Lower	Upper			
Pair 1	OCT DC - OCT 30 Menit DC	-11.050	13.720	1.534	-14.103	-7.997	-7.203	79	.000
Pair 2	OCT DC - OCT 2 Jam DC	-23.450	11.581	1.295	-26.027	-20.873	-18.111	79	.000
Pair 3	OCT 30 Menit DC - OCT 2 Jam DC	-12.400	12.695	1.419	-15.225	-9.575	-8.737	79	.000
Pair 4	OCT MC - OCT 30 Menit MC	-4.400	8.040	.899	-6.189	-2.611	-4.895	79	.000
Pair 5	OCT MC - OCT 2 Jam MC	-9.925	11.288	1.262	-12.437	-7.413	-7.864	79	.000
Pair 6	OCT 30 Menit MC - OCT 2 Jam MC	-5.525	5.542	.620	-6.758	-4.292	-8.918	79	.000

## Perubahan tekanan darah

### Distribusi data

	Tests of Normality					
	Kolmogorov-Smirnov <sup>a</sup>			Shapiro-Wilk		
	Statistic	df	Sig.	Statistic	df	Sig.
Tekanan Darah Sistolik DC	.105	40	.200 <sup>*</sup>	.939	40	.032
Tekanan Darah Sistolik DC 30 Menit	.191	40	.001	.903	40	.002
Tekanan Darah Sistolik DC 2 jam	.130	40	.087	.897	40	.002
Tekanan Darah Diastolik DC	.078	40	.200 <sup>*</sup>	.959	40	.159
Tekanan Darah Diastolik DC 30 menit	.139	40	.051	.930	40	.016
Tekanan Darah Diastolik DC 2 jam	.129	40	.090	.928	40	.014
Tekanan Darah Sistolik MC	.111	40	.200 <sup>*</sup>	.944	40	.048
Tekanan Darah Sistolik MC 30 menit	.117	40	.183	.895	40	.001
Tekanan Darah Sistolik MC 2 jam	.141	40	.043	.875	40	.000
Tekanan Darah Diastolik MC	.100	40	.200 <sup>*</sup>	.948	40	.063
Tekanan Darah Diastolik MC 30 menit	.083	40	.200 <sup>*</sup>	.963	40	.218
Tekanan Darah Diastolik MC 2 jam	.152	40	.020	.919	40	.007

\*. This is a lower bound of the true significance.

a. Lilliefors Significance Correction

## Friedman Test

### Ranks

	Mean Rank
Tekanan Darah Sistolik DC	1.90
Tekanan Darah Sistolik DC 30 Menit	2.16
Tekanan Darah Sistolik DC 2 jam	1.94

### Test Statistics<sup>a</sup>

N	40
Chi-Square	1.654
df	2

Asymp. Sig.	.437
-------------	------

a. Friedman Test

### Ranks

	Mean Rank
Tekanan Darah Diastolik DC	2.24
Tekanan Darah Diastolik DC 30 menit	1.98
Tekanan Darah Diastolik DC 2 jam	1.79

### Test Statistics<sup>a</sup>

N	40
Chi-Square	4.166
df	2
Asymp. Sig.	.125

a. Friedman Test

### Ranks

	Mean Rank
Tekanan Darah Sistolik MC	2.20
Tekanan Darah Sistolik MC 30 menit	2.08
Tekanan Darah Sistolik MC 2 jam	1.73

### Test Statistics<sup>a</sup>

N	40
Chi-Square	5.243
df	2
Asymp. Sig.	.073

a. Friedman Test

### Ranks

	Mean Rank
Tekanan Darah Diastolik MC	2.35
Tekanan Darah Diastolik MC 30 menit	2.00
Tekanan Darah Diastolik MC 2 jam	1.65

### Test Statistics<sup>a</sup>

N	40
Chi-Square	10.523
df	2
Asymp. Sig.	.005

a. Friedman Test

### Descriptive Statistics

	N	Mean	Std. Deviation	Minimum	Maximum
Tekanan Darah Sistolik DC	40	102.4667	9.49458	90.00	130.00
Tekanan Darah Sistolik DC 30 Menit	40	103.7333	9.95752	90.00	136.67
Tekanan Darah Diastolik DC	40	71.2083	7.60667	60.00	90.00
Tekanan Darah Diastolik DC 30 menit	40	70.9333	6.95783	60.00	93.33
Tekanan Darah Sistolik MC	40	103.5000	9.14710	90.00	129.33
Tekanan Darah Sistolik MC 30 menit	40	101.2250	8.52293	90.00	133.33
Tekanan Darah Diastolik MC	40	70.7333	6.67231	60.00	86.00
Tekanan Darah Diastolik MC 30 menit	40	68.7500	5.36569	60.00	85.00
Tekanan Darah Sistolik DC 2 jam	40	101.4000	9.67777	90.00	131.00
Tekanan Darah Diastolik DC 2 jam	40	68.8333	6.27935	60.00	89.00
Tekanan Darah Sistolik MC 2 jam	40	99.8667	9.06413	90.00	133.33
Tekanan Darah Diastolik MC 2 jam	40	68.2667	6.15572	60.00	84.00

### Independent Samples Test

		Levene's Test for Equality of Variances		t-test for Equality of Means						
		F	Sig.	t	df	Sig. (2-tailed)	Mean Difference	Std. Error Difference	95% Confidence Interval of the Difference	
									Lower	Upper
Tekanan Darah Sistolik	Equal variances assumed	.198	.658	-.496	78	.621	-1.03333	2.08457	-5.18338	3.11672
	Equal variances not assumed			-.496	77.892	.621	-1.03333	2.08457	-5.18348	3.11681
Tekanan Darah Diastolik	Equal variances assumed	.489	.486	.297	78	.767	.47500	1.59985	-2.71006	3.66006
	Equal variances not assumed			.297	76.698	.767	.47500	1.59985	-2.71091	3.66091

**Paired Samples Statistics**

		Mean	N	Std. Deviation	Std. Error Mean
Pair 1	Tekanan Darah Sistolik	102.9833	80	9.27785	1.03730
	Tekanan Darah Sistolik 30 Menit	102.4792	80	9.29526	1.03924
Pair 2	Tekanan Darah Sistolik	102.9833	80	9.27785	1.03730
	Tekanan Darah Sistolik 2 jam	100.6333	80	9.34833	1.04518
Pair 3	Tekanan Darah Sistolik 30 Menit	102.4792	80	9.29526	1.03924
	Tekanan Darah Sistolik 2 jam	100.6333	80	9.34833	1.04518
Pair 4	Tekanan Darah Diastolik	70.9708	80	7.11335	.79530
	Tekanan Darah Diastolik 30 menit	69.8417	80	6.27050	.70106
Pair 5	Tekanan Darah Diastolik	70.9708	80	7.11335	.79530
	Tekanan Darah Diastolik 2 jam	68.0500	80	6.22845	.69636
Pair 6	Tekanan Darah Diastolik 30 menit	69.8417	80	6.27050	.70106
	Tekanan Darah Diastolik 2 jam	68.0500	80	6.22845	.69636



### Paired Samples Test

		Paired Differences					t	df	Sig. (2-tailed)
		Mean	Std. Deviation	Std. Error Mean	95% Confidence Interval of the Difference				
					Lower	Upper			
Pair 1	Tekanan Darah Sistolik - Tekanan Darah Sistolik 30 Menit	.50417	6.78212	.75826	-1.00512	2.01345	.665	79	.508
Pair 2	Tekanan Darah Sistolik - Tekanan Darah Sistolik 2 jam	2.35000	6.81685	.76215	.83298	3.86702	3.083	79	.003
Pair 3	Tekanan Darah Sistolik 30 Menit - Tekanan Darah Sistolik 2 jam	1.84583	7.82670	.87505	.10409	3.58758	2.109	79	.038
Pair 4	Tekanan Darah Diastolik - Tekanan Darah Diastolik 30 menit	1.12917	5.60277	.62641	-.11767	2.37600	1.803	79	.075
Pair 5	Tekanan Darah Diastolik - Tekanan Darah Diastolik 2 jam	2.92083	5.62775	.62920	1.66844	4.17323	4.642	79	.000
Pair 6	Tekanan Darah Diastolik 30 menit - Tekanan Darah Diastolik 2 jam	1.79167	5.87837	.65722	.48350	3.09983	2.726	79	.008

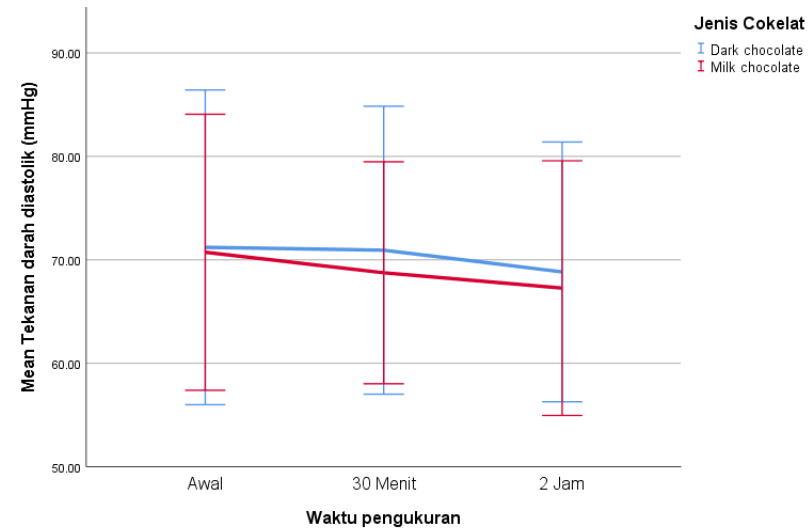
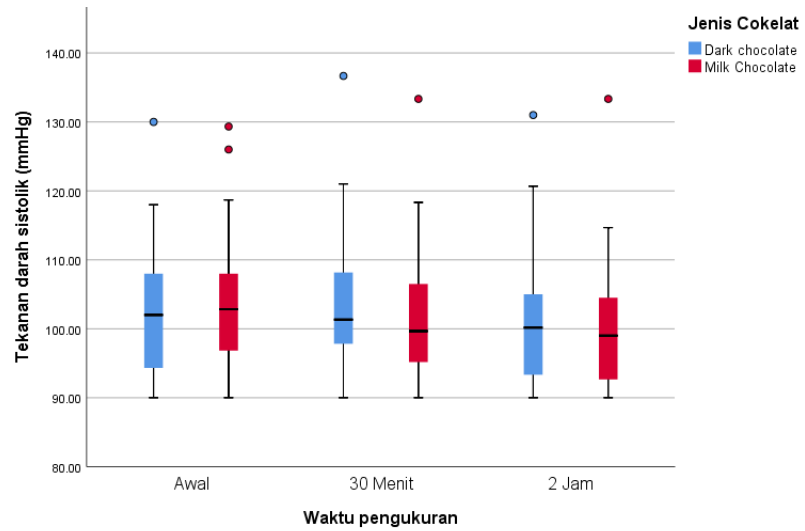
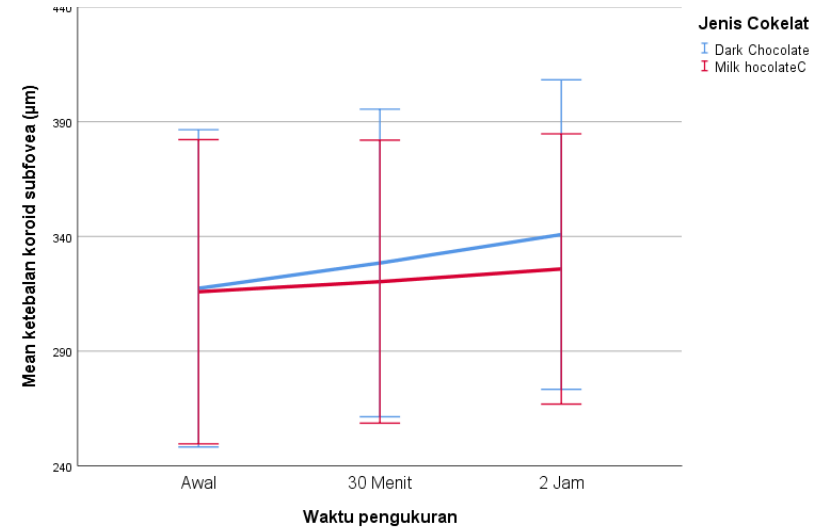
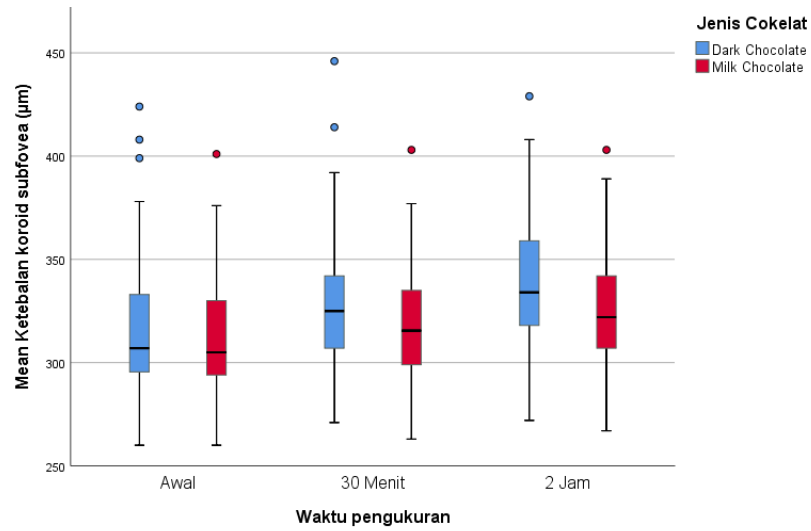
## Uji Wilcoxon

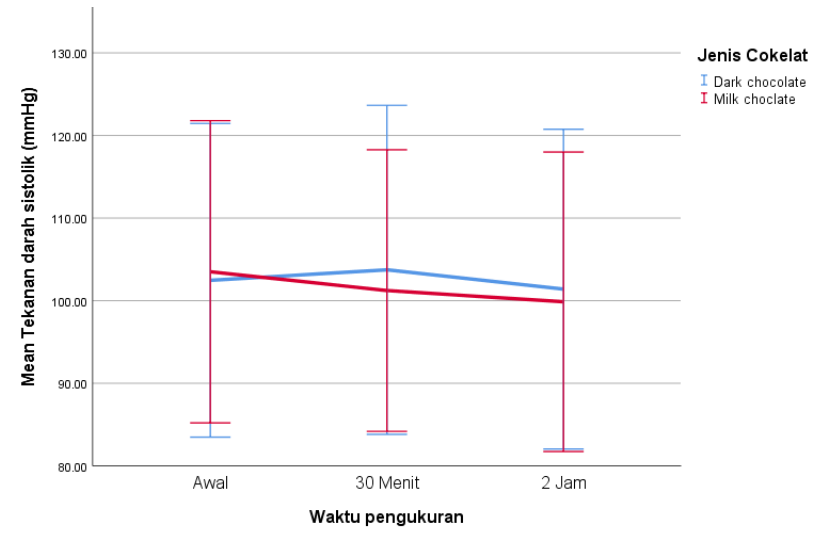
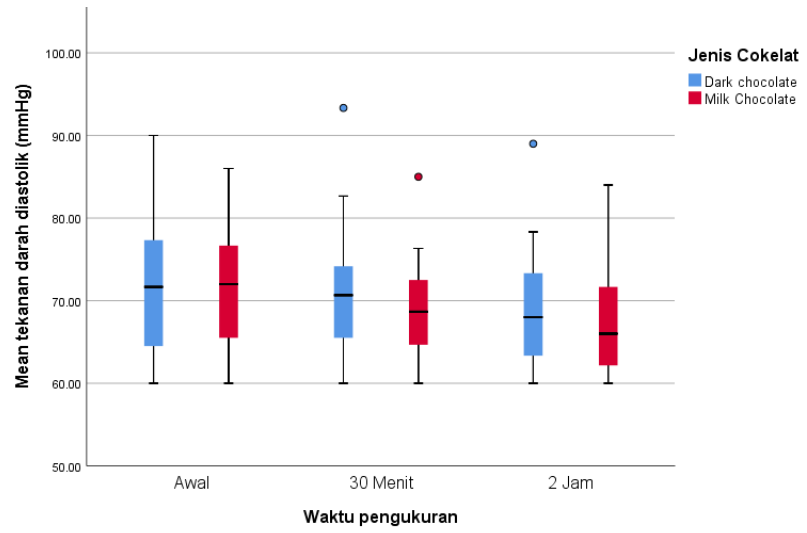
	Test Statistics <sup>a</sup>											
	Tekanan Darah Sistolik DC	Tekanan Darah Sistolik DC	Tekanan Darah Sistolik DC 2 jam - 30 Menit	Tekanan Darah Diastolik DC	Tekanan Darah Diastolik DC 2 jam - 30 menit	Tekanan Darah Diastolik DC 2 jam - 30 menit	Tekanan Darah Sistolik MC	Tekanan Darah Sistolik MC	Tekanan Darah Sistolik MC 2 jam - 30 menit	Tekanan Darah Diastolik MC	Tekanan Darah Diastolik MC 2 jam - 30 menit	Tekanan Darah Diastolik MC 2 jam - 30 menit
Z	-.984 <sup>b</sup>	-.468 <sup>c</sup>	-1.755 <sup>c</sup>	-.128 <sup>c</sup>	-2.674 <sup>c</sup>	-2.009 <sup>c</sup>	-1.669 <sup>c</sup>	-2.844 <sup>c</sup>	-1.478 <sup>c</sup>	-2.423 <sup>c</sup>	-3.388 <sup>c</sup>	-1.411 <sup>c</sup>
Asymp. Sig. (2-tailed)	.325	.640	.079	.898	.077	.044	.095	.064	.140	.055	.051	.158

a. Wilcoxon Signed Ranks Test

b. Based on negative ranks.

c. Based on positive ranks.





## Korelasi

### Dark Chocolate

		Correlations								
		OCT Awal DC	OCT 30 Menit DC	OCT 2 Jam DC	Tekanan Darah Sistolik DC	Tekanan Darah Sistolik DC 30 Menit	Tekanan Darah Sistolik DC 2 jam	Tekanan Darah Diastolik DC	Tekanan Darah Diastolik DC 30 menit	Tekanan Darah Diastolik DC 2 jam
OCT Awal DC	Pearson Correlation	1	.919**	.943**	.056	.025	.015	.119	.145	.031
	Sig. (2-tailed)		.000	.000	.731	.879	.928	.465	.371	.848
	N	80	80	80	40	40	40	40	40	40
OCT 30 Menit DC	Pearson Correlation	.919**	1	.929**	.069	.035	.012	.134	.157	.056
	Sig. (2-tailed)	.000		.000	.673	.830	.943	.408	.332	.730
	N	80	80	80	40	40	40	40	40	40
OCT 2 Jam DC	Pearson Correlation	.943**	.929**	1	.145	.136	.100	.225	.233	.159
	Sig. (2-tailed)	.000	.000		.373	.404	.538	.162	.149	.328
	N	80	80	80	40	40	40	40	40	40
Tekanan Darah Sistolik DC	Pearson Correlation	.056	.069	.145	1	.735**	.793**	.958**	.743**	.782**
	Sig. (2-tailed)	.731	.673	.373		.000	.000	.000	.000	.000
	N	40	40	40	40	40	40	40	40	40
Tekanan Darah Sistolik DC 30 Menit	Pearson Correlation	.025	.035	.136	.735**	1	.577**	.637**	.919**	.581**
	Sig. (2-tailed)	.879	.830	.404	.000		.000	.000	.000	.000
	N	40	40	40	40	40	40	40	40	40
Tekanan Darah Sistolik DC 2 jam	Pearson Correlation	.015	.012	.100	.793**	.577**	1	.731**	.560**	.916**
	Sig. (2-tailed)	.928	.943	.538	.000	.000		.000	.000	.000
	N	40	40	40	40	40	40	40	40	40
Tekanan Darah Diastolik DC	Pearson Correlation	.119	.134	.225	.958**	.637**	.731**	1	.677**	.735**
	Sig. (2-tailed)	.465	.408	.162	.000	.000	.000		.000	.000
	N	40	40	40	40	40	40	40	40	40
Tekanan Darah Diastolik DC 30 menit	Pearson Correlation	.145	.157	.233	.743**	.919**	.560**	.677**	1	.584**
	Sig. (2-tailed)	.371	.332	.149	.000	.000	.000	.000		.000
	N	40	40	40	40	40	40	40	40	40

Tekanan Darah Diastolik DC 2 jam	Pearson Correlation	.031	.056	.159	.782**	.581**	.916**	.735**	.584**	1
	Sig. (2-tailed)	.848	.730	.328	.000	.000	.000	.000	.000	
	N	40	40	40	40	40	40	40	40	40

\*\* . Correlation is significant at the 0.01 level (2-tailed).

## Milk chocolate

		Correlations								
		OCT Awal MC	OCT 30 Menit MC	OCT 2 Jam MC	Tekanan Darah Sistolik MC	Tekanan Darah Sistolik MC 30 menit	Tekanan Darah Sistolik MC 2 jam	Tekanan Darah Diastolik MC	Tekanan Darah Diastolik MC 30 menit	Tekanan Darah Diastolik MC 2 jam
OCT Awal MC	Pearson Correlation	1	.971**	.942**	.174	.082	.180	.100	.074	.087
	Sig. (2-tailed)		.000	.000	.283	.614	.265	.541	.650	.593
	N	80	80	80	40	40	40	40	40	40
OCT 30 Menit MC	Pearson Correlation	.971**	1	.984**	.057	-.003	.115	-.041	-.025	.021
	Sig. (2-tailed)	.000		.000	.727	.985	.479	.804	.877	.899
	N	80	80	80	40	40	40	40	40	40
OCT 2 Jam MC	Pearson Correlation	.942**	.984**	1	.038	-.007	.108	-.048	.003	.042
	Sig. (2-tailed)	.000	.000		.816	.967	.507	.769	.988	.799
	N	80	80	80	40	40	40	40	40	40
Tekanan Darah Sistolik MC	Pearson Correlation	.174	.057	.038	1	.769**	.682**	.902**	.706**	.489**
	Sig. (2-tailed)	.283	.727	.816		.000	.000	.000	.000	.001
	N	40	40	40	40	40	40	40	40	40
Tekanan Darah Sistolik MC 30 menit	Pearson Correlation	.082	-.003	-.007	.769**	1	.730**	.654**	.903**	.500**
	Sig. (2-tailed)	.614	.985	.967	.000		.000	.000	.000	.001
	N	40	40	40	40	40	40	40	40	40
Tekanan Darah Sistolik MC 2 jam	Pearson Correlation	.180	.115	.108	.682**	.730**	1	.611**	.603**	.818**
	Sig. (2-tailed)	.265	.479	.507	.000	.000		.000	.000	.000
	N	40	40	40	40	40	40	40	40	40
Tekanan Darah Diastolik MC	Pearson Correlation	.100	-.041	-.048	.902**	.654**	.611**	1	.640**	.559**
	Sig. (2-tailed)	.541	.804	.769	.000	.000	.000		.000	.000

	N	40	40	40	40	40	40	40	40	40
Tekanan Darah Diastolik MC 30 menit	Pearson Correlation	.074	-.025	.003	.706**	.903**	.603**	.640**	1	.510**
	Sig. (2-tailed)	.650	.877	.988	.000	.000	.000	.000		.001
	N	40	40	40	40	40	40	40	40	40
Tekanan Darah Diastolik MC 2 jam	Pearson Correlation	.087	.021	.042	.489**	.500**	.818**	.559**	.510**	1
	Sig. (2-tailed)	.593	.899	.799	.001	.001	.000	.000	.001	
	N	40	40	40	40	40	40	40	40	40

\*\* . Correlation is significant at the 0.01 level (2-tailed).

## 5. Biodata Peneliti

### A. Data Pribadi

Nama Mahasiswa : dr. La Ode Hamzah Rachmat  
Nomor Pokok : C 025181004  
Alamat : Jl Berua Raya Komp Sikamasseang Blok C/2  
Daya Makassar  
Program Pendidikan : Dokter Spesialis Terpadu Fakultas  
Kedokteran Universitas Hasanuddin  
Program Studi : Ilmu Kesehatan Mata  
Judul tesis : Perbandingan Pengaruh Antara Konsumsi  
Sewaktu *Dark Chocolate* Dan *Milk Chocolate*  
Pada Ketebalan Koroid Pada Sampel Sehat  
Usia Muda

#### 1. Riwayat Pendidikan:

NO.	STRATA	INSTITUSI	TEMPAT	TAHUN LULUS
1.	SD	SDN Sudirman III	Makassar	1995
2.	SLTP	SLTP Negeri 2	Makassar	1998
3.	SMU	SMU Negeri 16	Makassar	2001
4.	S1	FK Universitas Hasanuddin	Makassar	2008
5.	PPDS	Bagian Ilmu Kesehatan Mata FK UNHAS	Makassar	Sementara Pendidikan

#### 2. Riwayat Pelatihan

NO.	PELATIHAN	INSTITUSI	TEMPAT	TAHUN
	---			

#### 3. Riwayat pekerjaan

NO.	INSTANSI	TEMPAT	KEDUDUKAN	PERIODE
1.	RS Semen Tonasa	Pangkajene dan Kepulauan	Doker Umum	2008 - 2010



2.	Politeknik Ilmu Pelayaran Makassar	Makassar	Dokter Umum	2010 - 2015
3.	Balai Diklat Pelayaran Minahasa Selatan	Minahasa Selatan Sulawesi Utara	Dokter Umum	2015 - 2018

4. Pengalaman penelitian

<b>NO.</b>	<b>JUDUL PENELITIAN</b>	<b>KEDUDUKAN DLM PENELITIAN</b>
	---	