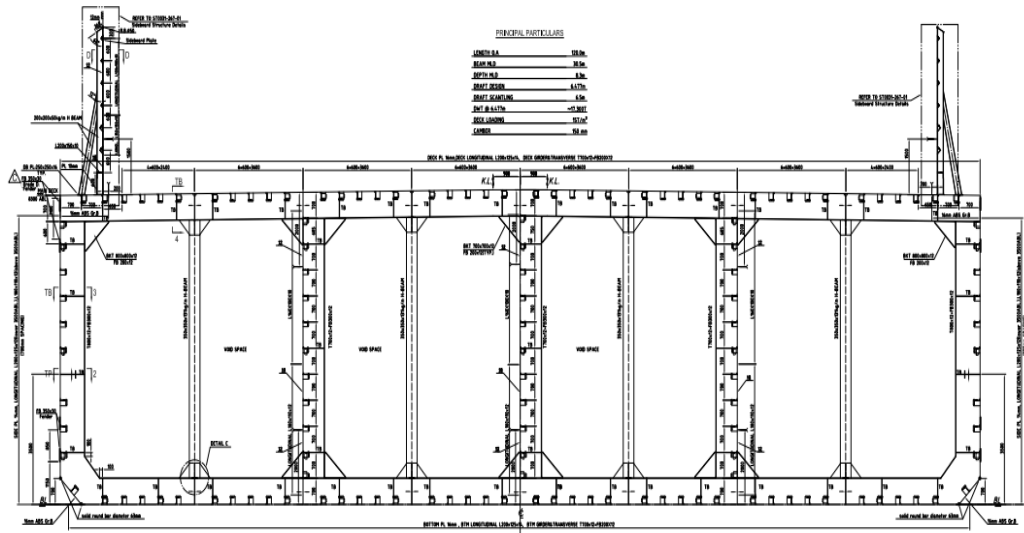


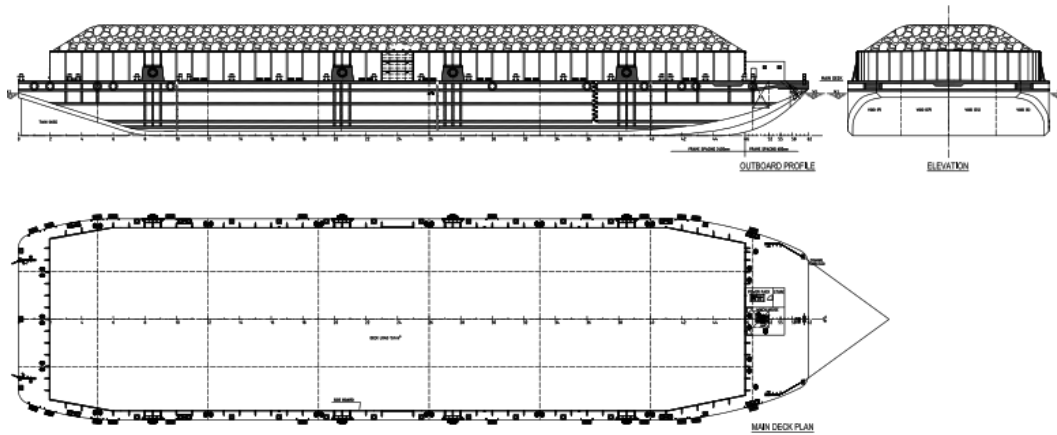
DAFTAR PUSTAKA

- Biro Klasifikasi Indonesia. 2019. *Rules for Classification and Construction of Sea Going Steel Ship Volume II : Rules For Hull Edition 2019*. Jakarta: Biro Klasifikasi Indonesia.
- Smith, T. 2015. *Belajar Mengenal Kapal – Konstruksi tongkang*. Indonesia: Online.
- Smit, Renè. 2015. *Comparing Current Barge Designs with Double Deck Plate Barge*. Leiden: Heerema Marine Contractors.
- Eyres, D. J. 2001. *Ship Construction Fifth Edition*. Butterworth Heinemann. German.
- IACS Rec. 1996. *IACS No.47 for Shipbuilding and Repair Quality Standard*. IACS.
- Okumoto, Yasuhisa. dkk. 2009. *Design of Ship Hull Structures - A Practical Guide for Engineers*. Takaya, Yokohama, dan Tokyo: Springer.
- Santoso, Budie. 2013. *Kekuatan Kapal*. Surabaya: Institusi Teknologi Surabaya.
- Shama, Mohamed. 2010. *Torsion and Shear Stresses in Ships*. Heidelberg: Springer.
- Pinem, Mhd Daud. 2013. *Analisis Sistem Mekanik ANSYS*. Wahana Ilmu Kita: Jakarta.

LAMPIRAN



Lampiran 1. Gambar Konstruksi Penampang Melintang Barge 17300 DWT



Lampiran 2. Gambar General Arrangement Barge 17300 DWT