

## DAFTAR PUSTAKA

- Arif, F. N. (2015). *Analisis Kerawanan Tanah Longsor untuk Menentukan Upaya Mitigasi Bencana di Kecamatan Kemiri Kabupaten Purworejo*. 1–186.
- Aftriana, Careca Virma, 2013. *Analisis Perubahan Kerapatan Vegetasi Kota Semarang Menggunakan Bantuan Teknologi Penginderaan Jauh*. Skripsi. Universitas Negeri Semarang
- Bashit, N. (2019). Analisis Lahan Kritis Berdasarkan Kerapatan Tajuk Pohon Menggunakan Citra Sentinel 2. *Jurnal Geodesi dan Geomatika*, 02(01), 71–79.
- Budiantoro, 2000. *Evaluasi Tujuan Suatu Proyek/Kegiatan*. Jakarta.
- Danoedoro, Projo. 2012. *Pengantar Penginderaan Jauh Digital*. Yogyakarta: Andi Offset.
- Damayantanti, P.T. (2011). Upaya Pelestarian Hutan Melalui Pengelolaan Sumberdaya Hutan Bersama Masyarakat. *Komunitas: International Journal of Indonesia Society and Culture*, 3(1), 70-82.
- Delarizka, A., Sasmito, B., dan Hani'ah (2016). Analisis Fenomena Pulau Bahang (Urban Heat Island) di Kota Semarang Berdasarkan Hubungan Antara Perubahan Tutupan Lahan dengan Suhu Permukaan Menggunakan Citra Multi Temporal Landsat. *Geodofisip undip*, 165–177.
- Departemen Kehutanan. (2009). *Gema Gerakan Nasional Rehabilitasi Hutan dan Lahan Wilayah Balai Pengelolaan DAS Jeneberang Walanae*, Dirjen RPLS BPDAS Jeneberang Walanae, Makassar.
- Didu, M.S. (2011). Analisis Posisi dan Peran Lembaga Serta Kebijakan Dalam Proses Pembentukan Lahan Kritis. *Jurnal Teknologi Lingkungan*, 2(1).
- Duffy, J.P., Pratt, L., Anderson, K., Land, P.E., & Shutler, J.D., 2018. Spatial Assessment of Intertidal Seagrass Meadows Using Optical Imaging Systems and a Lightweight Drone. *Estuarine, Coastal and Shelf Science*, 200:169-180.

DOI: 10.1016/j.ecss.2017.11.001.

- Eko, T., & Rahayu, S. (2012). Perubahan Penggunaan Lahan dan Kesesuaiannya terhadap RDTR di Wilayah Peri-Urban Studi Kasus: Kecamatan Mlati. *Jurnal Pembangunan Wilayah & Kota*, 8(4), 330. <https://doi.org/10.14710/pwk.v8i4.6487>
- Farahdita, W.L., Soenardjo, N., & Suryono, C.A. (2021). Teknologi Drone untuk Estimasi Stok Karbon di Areal Mangrove Pulau Kemujan, Karimunjawa. *Journal of Marine Research*, 10(2), 281-290.
- Garsetiasih, R., & Heriyanto, N.M. (2014). Karakteristik Vegetasi Habitat Banteng (*Bos javanicus* d'Alton 1832) di Taman Nasional Meru Betiri, Jawa Timur. *Jurnal Penelitian Hutan dan Konservasi Alam* 11(1):77-89.
- Ginting, K.B., Purwoko, A., & Simanjuntak, J. (2015). Kearifan Lokal Dalam Pengelolaan Hutan di Desa Serdang Kecamatan Barusjahe, Kabupaten Karo. *Peronema Forestry Science Journal*, 4(4), 186-199.
- Gray, P.C., Ridge, J.T., Poulin, S.K., Seymour, A.C., Schwantes, A.M., Swenson, J.J., & Johnston, D.W., 2018. Integrating Drone Imagery Into High Resolution Satellite Remote Sensing Assessments of Estuarine Environments. *Remote Sensing*, 10(8). DOI: 10.3390/rs10081257.
- Horning, N. 2004. *Global Land Vegetation; An Electronic Textbook*. NASA Goddard Space Flight Center Earth Sciences Directorate Scientific and Educational Endeavors (SEE).
- Indah Purwati, F. W. (2019). *Kerapatan Tajuk dan Penggunaan Lahan Berdasarkan Analisis Citra Satelit dan Sistem Informasi Geografis Pada Kawasan Geopark Silokek*. 4(2), 98–107.
- Indreswari, S., (2018). *Analisis Peran Unmanned Aerial Vehicle Jenis Multicopter dalam Meningkatkan Kualitas Dunia Fotografi Udara di Lokasi Jalur Selatan Menuju Calon Bandara Baru di Kulonprogo*. REKAM: *Jurnal Fotografi, Televisi, Animasi*, 14(1), 17-25.

- Indrihastuti, D., Murti Laksono, K., & Tjahjono, B. (2016). Analysis of Critical Land and Recommendation for Land Rehabilitation In The Regional Development In Kendal, Central Java. *Tata Loka*, 18(3), 141–156. <http://ejournal2.undip.ac.id/index.php/tataloka>
- Jamil, Dzulfikar Habibi, 2013. *Deteksi Potensi Kekeringan Berbasis Penginderaan Jauh dan Sistem Informasi Geografis di Kabupaten Klaten*. Skripsi. Universitas Negeri Semarang.
- Jatmiko, A., Sadono R., Farida, L. R. W. (2012). Evaluasi Kegiatan Rehabilitasi Hutan dan Lahan Menggunakan Analisa Multikriteria (Studi Kasus Di Desa Butuh Kidul Kecamatan Kalikajar, Kabupaten Wonosobo, Jawa Tengah. *Jurnal Ilmu Kehutanan*, 6(1), 30–44. <https://doi.org/10.22146/jik.3307>
- Kartika, T., Dirgahayu, D., Sari, I. L., Parsa, I. M., & Carolita, I. (2019). Evaluation of critical land rehabilitation based on Landsat-8 NDVI trend (in Indonesian). *Jurnal Penginderaan Jauh dan Pengolahan Data Citra Digital*, 16(2), 61–70.
- Kementerian Kehutanan. (2012). Kumpulan Peraturan Perundang-undangan di Bidang Kehutanan dan Konservasi Sumber Daya Alam Hayati dan Ekosistemnya :Peraturan Pemerintah No. 28 tahun 2011 tentang Pengelolaan Kawasan Suaka Alam dan Kawasan Pelestarian Alam. *Dirjen PHKA BKSDA Lampung*. 215–245 hlm.
- Khaidir, N. (2022). Pengawasan dan Penilaian Kegiatan Rehabilitasi Hutan dan Lahan Studi Kasus Blok Bukit Tapan, Kabupaten Kerinci. *Doctoral Dissertation*, Program Profesi Insinyur.
- Lukas, R. R., Veronica, K., Hendriek, H. K. (2018). Identifikasi dan Pemetaan Lahan Kritis dengan Menggunakan Teknologi Sistem Informasi Geografis (Studi Kasus Kota Bitung). *Spasial*, 5(1), 92–104.
- Maksum, M. 2005. *Monitoring dan Evaluasi, Bahan Ajar Manajemen Proyek*. Fakultas Teknologi Pertanian Universitas Gadjah Mada. Yogyakarta.

- McKinnon, T., & Hoff, P. (2017). *Comparing RGB-Based Vegetation Indices with NDVI for Drone Based Agricultural Sensing*. USA: Agribotix LLC.
- Muklas. 2014. *Pembuatan Digital Surface Model (DSM) dari Citra Foto UAV Menggunakan Agisoft Photoscan Profesional Versi 0.9*. Institut Teknologi Nasional Malang.
- Nirawati, N. B., & Putranto, B. (2013). Evaluasi Keberhasilan Pertumbuhan Tanaman pada Kegiatan Rehabilitasi Hutan dan Lahan (GNRHL) di Taman nasional Bantimurung Bulusaraung (Studi Kegiatan GNRHL Tahun 2003-2007). *Jurnal Sains & Teknologi*, 13(2), 175–183. <http://pasca.unhas.ac.id/jurnal/files/78e97117f84a28e99ca000bf37146906.pdf>
- Nursaputra, M. (2014). *Deteksi Tingkat Kesehatan Hutan Sebagai Upaya Perlindungan dan Pelestarian Ekosistem Penting dalam Pengelolaan Daerah Aliran Sungai: Studi Kasus Tipe-tipe Hutan di DAS Maros Sulawesi Selatan*. Yogyakarta: Program Pascasarjana Fakultas Geografi Universitas Gadjah Mada.
- Pradana, M.G.A., Prasakti R., Worsito, S. B., & Fajaryati, N. 2016. Single Propeller Drone (Singrone): Inovasi Rancang Bangun Drone Single Propeller sebagai Wahana Pemetaan Lahan Berbasis UAV. *Jurnal Electronics, Informatics, and Vocational Education (ELINVO)*. Vol. 1. No. 3 : 157–162.
- Prasasli, I., & Sambodo, K.A. (2004). *Pengkajian Nilai Indeks Vegetasi Data Modis dengan Menerapkan Beberapa Algoritma Pengolahan Data Indeks Vegetasi*. *Jurnal Penginderaan Jauh dan Pengolahan Data Citra Digital*, 1(1), 20–34.
- Prasasti, I., Carolita, I., Ramdani, A. E., dan Risdiyanto, I. (2012). Kajian Pemanfaatan data ALOS PALSAR dalam Pemetaan Kelembaban Tanah. *Penginderaan Jauh dan Pengelolaan Data Citra Digital*, 102-113.
- Pratiwi, Santoso, E., dan Turjaman, M. (2012). Penentuan Dosis Bahan Pembenhah *Ameliorant* Untuk Perbaikan Tanah dari *Tailing* Pasir Kuarsa Sebagai Media Tumbuh Tanaman Hutan. *Jurnal Penelitian Hutan dan Konservasi Alam*

9(2): 163–174.

- Print, I., Nurdiawan, O., & Pratama, F. A. (2019). InfoTekJar : Jurnal Nasional Informatika dan Teknologi Jaringan Implementasi Algoritma K-Means Dalam Penentuan Prioritas Rehabilitasi Daerah Aliran Sungai Cipunagara. *InfoTekJar : Jurnal Nasional Informatika dan Teknologi Jaringan ISSN*, 4(1), 77–81.
- Pudjiharta, A., Santoso, E., & Turjaman, M. (2007). Reklamasi Lahan Terdegradasi Dengan Revegetasi Pada Bekas Tambang Bahan Baku Semen. *Jurnal Penelitian Hutan dan Konservasi Alam*, 4(3), 223–238. <https://doi.org/10.20886/jphka.2007.4.3.223-238>.
- Putra, A., Tanto, T.A., Farhan, A.R., Husrin, S., & Pranowo, W.S. (2017). Pendekatan Metode Normalized Difference Vegetation Index (NDVI) dan Lyzenga untuk Pemetaan Sebaran Ekosistem Perairan di Area Pesisir Teluk Benoa-Bali. *Geomatika*, 23(2): 87-94. DOI: 10.24895/JIG.2017.23-2.729.
- Ruwaimana, M. 2016. *Like a drone come true: Comparison of Satellite and Drone Imagery for Mangrove Mapping in Setiu Wetland, Malaysia*. Brussels.
- S. Ayu Purnama, U. Huda, & Sukemi. (2018). *New Model of Vegetation Monitoring Using Flying NIR Cameras with NDVI Parameters and C-means*, ICONISCSE. 4(1).
- Santoso. 2017. Pengembangan Sistem Penyemprotan pada Platform Pesawat tanpa Awak Berbasis Quadcopter untuk Membantu Petani Mengurangi Biaya Pertanian dalam Mendorong Konsep Pertanian Pintar (*Smart Farming*). *Angkasa*, 9(2), 49-56.
- Satyanarayana, B., Koedam, N., Smet, K.D., Nitto, D.D., Bauwens, M., Jayatissa, L.P., Dahdouh-Guebas, F. 2011. Long-term Mangrove Forest Development In Sri Lanka: Early Predictions Evaluated Against Outcomes Using VHR Remote Sensing and VHR Ground-truth Data. *Marine Ecology Progress series*, 443: 51-63.

- Sawaluddin, Sitorus, S., Suyanto, Harahap, S., & Hutagalung, J. 2006. *Pengolahan Citra Digital*. Medan: Ilmu Komputer FMIPA USU.
- Sitta Rahayu, I Nyoman Piarsa, P. W. B. (2016). *LontarKomputer : Jurnal Ilmiah Teknologi Informasi*. 7.
- Sukiyah, E. (2017). Sistem Informasi Geografis Konsep dan aplikasinya dalam analisis geomorfologi kuantitatif. In *Sistem Informasi* (Vol. 3, Nomor 2).
- Sunartomo, A. F. (2011). Inventarisasi dan sebaran lahan kritis di kabupaten situbondo. *J-Sep*, 5(1), 12–22.
- Sutoyo, T., Mulyanto, E., Suhartono, V., Nurhayati, O.D. & Wijanarto. 2009. *Teori pengolahan Citra Digital*. Yogyakarta: Penerbit ANDI.
- Sulistyo, W., Ari, S., Budi, S., Parsumo, R., Sukamto. (2016). Inovasi Sistem Promosi Melalui Foto Udara Quadcopter dengan Modifikasi dan Jejaring Sosial. *Jurnal Teknik Elektro*. 5(1), 1-6.
- Tang, L, and Shao, G. 2015. *Drone Remote Sensing for Forestry Research and Practices*. Journal of Forestry Research (2015) 26(4): 791-797.
- Utami, 2018. *Pengaruh Cahaya Terhadap Pertumbuhan Tanaman*. Universitas Udayana: Bali.
- Vitasari, W., Useng, D., & Munir, A. (2017). Pendugaan Produksi dan Indeks Vegetasi Tanaman Padi Menggunakan Data Citra Platform Unmanned Aerial Vechile (UAV) dan Data Satelit Landsat 8. *Jurnal Agritechno*, 10(2), 203-216.
- Wikantika, K. (2008). *Unmanned Mapping Technology: Development and Applications*. In *Proceeding Workshop UnMapTech 2008*.



2	Akasia	80	9,8	25,48		
3	Akasia	48	6,1	15,29		
4	Akasia	39	6,5	12,42		
5	Akasia	79,6	8	25,35		
6	Akasia	43,5	7,9	13,85		
7	Akasia	52	8,3	16,56		
8	Akasia	50,3	11,4	16,02		
9	Akasia	61	11	19,43		
10	Akasia	58,2	9,2	18,54		
11	Akasia	68	7,4	21,66		
12	Akasia	47,8	9,7	15,22		
13	Akasia	45	10	14,33		
14	Akasia	56	6,2	17,83		
15	Akasia	60,4	17,4	19,24		
16	Akasia	62	10	19,75		
17	Akasia	70	9,1	22,29		
18	Akasia	67	10,2	21,34		
19	Akasia	52,8	8,3	16,82		
20	Akasia	45	9,7	14,33		
21	Akasia	42	8	13,38		
22	Akasia	63	11	20,06		
23	Akasia	71	9,4	22,61		
<b>TOTAL</b>			<b>213,1</b>			
<b>RATA-RATA</b>			<b>9,26</b>			

Lokasi : Labaka Koordinat x : 119°42'06"E

Tahun Tanam : 2012 y : 4°44'30"S

Luas : 0,1 Ha

No	JENIS TANAMAN	KELILING (cm)	TINGGI (m)	DIAMETER (cm)	TANAMAN TUMBUH	DITANAM
1	Mahoni	36	8,2	11,46	26	39
2	Mahoni	31	6,5	9,87		
3	Mahoni	45	7,8	14,33		
4	Mahoni	49,4	8	15,73		
5	Mahoni	48	8,1	15,29		
6	Mahoni	38	6,1	12,10		
7	Mahoni	39,6	6,7	12,61		
8	Mahoni	42,5	6,8	13,54		
9	Mahoni	50	6,4	15,92		
10	Mahoni	52	7,4	16,56		



11	Mahoni	43	8,5	13,69		
12	Mahoni	50,4	7,7	16,05		
13	Mahoni	48,5	6,9	15,45		
14	Mahoni	37,7	10	12,01		
15	Mahoni	39	7,1	12,42		
16	Mahoni	51	9,4	16,24		
17	Mahoni	53,3	12	16,97		
18	Mahoni	32	8,4	10,19		
19	Mahoni	44	6,9	14,01		
20	Mahoni	49,2	14	15,67		
21	Mahoni	46,8	7,6	14,90		
22	Mahoni	52,1	8,1	16,59		
23	Mahoni	34,5	7,3	10,99		
24	Mahoni	38,1	9,8	12,13		
25	Mahoni	40,6	7,2	12,93		
26	Mahoni	38	6,9	12,10		
TOTAL			209,8			
RATA"			8,39			

Lokasi : Kampung Baru Koordinat x : 119°41'44"E

Tahun Tanam : 2013 y : 4°41'47"S

Luas : 0,1 Ha

No	JENIS TANAMAN	KELILING (cm)	TINGGI (m)	DIAMETER (cm)	TANAMAN TUMBUH	DITANAM
1	Mahoni	31	6,1	9,87	33	46
2	Mahoni	37	10	11,78		
3	Mahoni	42	11,1	13,38		
4	Mahoni	17	5,4	5,41		
5	Mahoni	28	5,1	8,92		
6	Mahoni	30	9,6	9,55		
7	Mahoni	33	10	10,51		
8	Mahoni	35	7,3	11,15		
9	Mahoni	42	6,9	13,38		
10	Mahoni	37	6,5	11,78		
11	Mahoni	44	7,9	14,01		
12	Mahoni	48	8,2	15,29		
13	Mahoni	46,5	9,6	14,81		
14	Mahoni	52,3	10	16,66		
15	Mahoni	55	8,6	17,52		
16	Mahoni	35	8,2	11,15		
17	Mahoni	32	7,9	10,19		
18	Mahoni	42,9	8,5	13,66		

19	Mahoni	43	8,8	13,69		
20	Mahoni	39	7,8	12,42		
21	Mahoni	34	7,7	10,83		
22	Mahoni	54	9,3	17,20		
23	Mahoni	48,2	8,7	15,35		
24	Mahoni	37	7,4	11,78		
25	Mahoni	40	8,4	12,74		
26	Mahoni	44,8	9,2	14,27		
27	Mahoni	36,7	7	11,69		
28	Mahoni	41	6,9	13,06		
29	Mahoni	33,8	7,8	10,76		
30	Mahoni	42,2	8,1	13,44		
31	Mahoni	42,6	8	13,57		
32	Mahoni	31	7,6	9,87		
33	Mahoni	28	5,8	8,92		
Total			265,4			
Rata"			8,04			

Lokasi : Jempulu

Koordinat x : 119°42'49"E

Tahun Tanam : 2014

y : 4°41'5"S

Luas : 0,1 Ha

No	JENIS TANAMAN	KELILING (cm)	TINGGI (m)	DIAMETER (cm)	TANAMAN TUMBUH	DITANAM
1	Akasia	66	8,6	21,02	36	46
2	Akasia	68	7,3	21,66		
3	Akasia	77	7,7	24,52		
4	Akasia	87,9	10	27,99		
5	Akasia	50	5,6	15,92		
6	Akasia	40	6,1	12,74		
7	Akasia	38	5,8	12,10		
8	Akasia	66,3	7,2	21,11		
9	Akasia	54,6	4,9	17,39		
10	Akasia	55,5	5,7	17,68		
11	Akasia	44,3	8,1	14,11		
12	Akasia	87,2	6,6	27,77		
13	Akasia	47,1	5,4	15,00		
14	Akasia	57,1	7,7	18,18		
15	Akasia	56,2	6,2	17,90		
16	Akasia	52,8	6,2	16,82		
17	Akasia	47,3	6,1	15,06		
18	Akasia	55	5,8	17,52		
19	Akasia	64	7,4	20,38		
20	Akasia	50	7,1	15,92		

21	Akasia	45,2	11	14,39		
22	Akasia	55,4	7,5	17,64		
23	Akasia	63	6,6	20,06		
24	Akasia	58,7	9,3	18,69		
25	Akasia	50	8,2	15,92		
26	Akasia	62	5,9	19,75		
27	Akasia	61,2	7,2	19,49		
28	Akasia	44,8	6,1	14,27		
29	Akasia	48,3	8,2	15,38		
30	Akasia	49	11	15,61		
31	Akasia	52	7,9	16,56		
32	Akasia	55,1	6,4	17,55		
33	Akasia	44	5,5	14,01		
34	Akasia	49	9,3	15,61		
35	Akasia	51,6	10	16,43		
36	Akasia	57	8,2	18,15		
Total			263,8			
Rata"			7,13			

Lokasi : Nepo

Koordinat x : 119°39'41"E

Tahun Tanam : 2019

y : 4°10'12"S

Luas : 0,1 Ha

No	JENIS TANAMAN	KELILING (cm)	TINGGI (m)	DIAMETER (cm)	TANAMAN TUMBUH	DITANAM
1	Pete	18	5,4	5,73	22	44
2	Pete	12,5	5,1	3,98		
3	Pete	20,5	4,2	6,53		
4	Pete	17	3,4	5,41		
5	Pete	24,5	3,7	7,80		
6	Pete	13,5	4,5	4,30		
7	Pete	12,9	3,2	4,11		
8	Pete	22,3	4,8	7,10		
9	Pete	15,1	5,1	4,81		
10	Pete	18,2	3,6	5,80		
11	Pete	12,6	4,2	4,01		
12	Pete	20,1	5	6,40		
13	Pete	17,8	3,5	5,67		
14	Pete	25,2	3,9	8,03		
15	Pete	24,4	4,2	7,77		
16	Pete	17	5,1	5,41		
17	Pete	17,2	4,1	5,48		
18	Pete	18,8	5,5	5,99		

19	Pete	18,5	5,9	5,89		
20	Pete	13,3	4,6	4,24		
21	Pete	13,5	4,4	4,30		
22	Pete	14,9	4,3	4,75		
23	Mahoni	14,4	5,3	4,59		
24	Mahoni	15,5	4,4	4,94		
25	Mahoni	19	5,9	6,05		
26	Mahoni	19	5,7	6,05		
27	Mahoni	18	4,8	5,73		
28	Jambu Mente	68	4,4	21,66		
29	Jambu Mente	58	3,4	18,47		
30	Jambu Mente	101	5,1	32,17		
31	Jambu Mente	65	5,5	20,70		
Jumlah			142,2			
Rata"			4,59			

Lokasi : Takapala Koordinat x : 119°38'34"E

Tahun Tanam : 2020 y : 4°07'19"S

Luas : 0,1 Ha

No	JENIS TANAMAN	KELILING (cm)	TINGGI (cm)	DIAMETER (cm)	TANAMAN TUMBUH	DITANAM
1	Jati	14	29	4,46	36	40
2	Jati	5,7	34	1,82		
3	Jati	4,4	30	1,40		
4	Jati	7,6	33	2,42		
5	Jati	10,3	28	3,28		
6	Jati	9,7	29	3,09		
7	Jati	6,5	25	2,07		
8	Jati	8,2	26	2,61		
9	Jati	6,6	26	2,10		
10	Jati	13	27	4,14		
11	Jati	9,8	23	3,12		
12	Jati	8,6	15	2,74		
13	Jati	5,9	24	1,88		
14	Jati	12,2	33	3,89		
15	Jati	11,6	29	3,69		
16	Jati	5,4	21	1,72		
17	Jati	6,4	28	2,04		
18	Jati	4,1	30	1,31		
19	Jati	7,7	29	2,45		
20	Jati	6,1	33	1,94		
21	Jati	7,9	34	2,52		

22	Jati	8,1	35	2,58		
23	Jati	5,6	15	1,78		
24	Jati	6,2	35	1,97		
25	Jati	4,9	28	1,56		
26	Jati	9,7	30	3,09		
27	Jati	5,9	19	1,88		
28	Jati	11,3	29	3,60		
29	Jati	10,8	18	3,44		
30	Jati	15,2	32	4,84		
31	Jati	5,4	35	1,72		
32	Jati	4,5	30	1,43		
33	Jati	7,6	31	2,42		
34	Jati	6,4	34	2,04		
35	Jati	5,9	20	1,88		
36	Jati	8,9	35	2,83		
Total			1012			
Rata"			28,11			

**Lampiran 2.** Hasil Olahan Foto Udara pada *Agisoft Metashape*



*Blue*



*Green*



Gambar 18. Hasil Olahan Foto Udara

**Lampiran 3.** Processing Report

a. Processing Report Citra Foto Udara

**Agisoft Metashape**  
Processing Report 16 June 2022



*Survey Data*

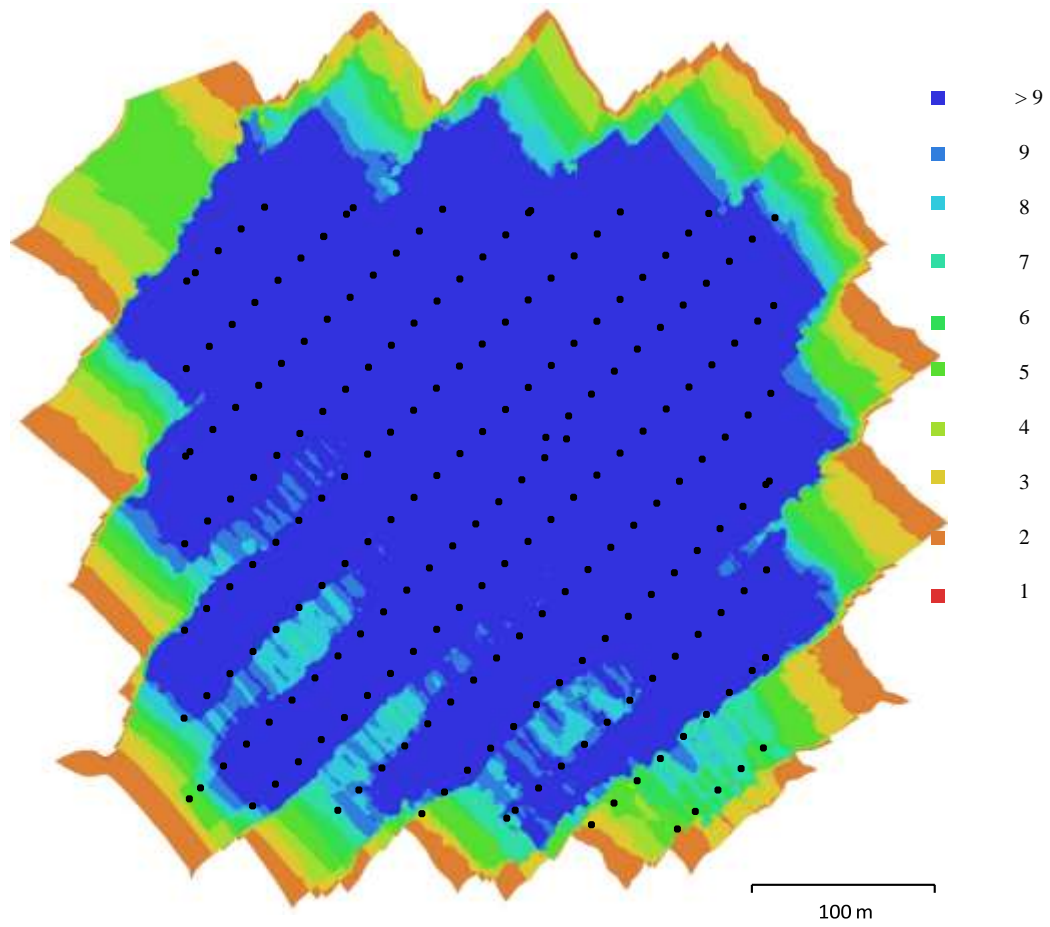


Fig. 1. Camera locations and images overlap.

Number of images:	206	Camera stations:	206
Flying altitude:	140 m	Tie points:	194,811
Ground resolution:	7.04 cm/pix	Projections:	523,428
Coverage area:	0.178 km <sup>2</sup>	Reprojection error:	0.555 pix

Camera Model	Resolution	Focal Length	Pixel Size	Precalibrated
FC6360 (5.74mm)	1600 x 1300	5.74 mm	3.01 x 3.01 $\mu$ m	No

Table 1. Cameras.

**Camera Calibration**

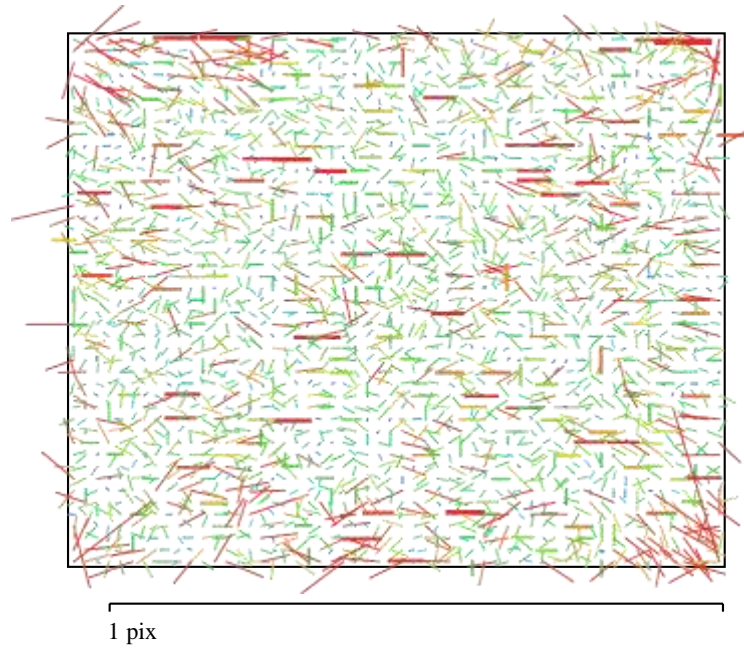


Fig. 2. Image residuals for FC6360 (5.74mm).

**FC6360 (5.74mm)**

206 images

Type	Resolution	Focal Length	Pixel Size
<b>Frame</b>	<b>1600 x 1300</b>	<b>5.74 mm</b>	<b>3.01 x 3.01 µm</b>

	Value	Error	F	Cx	Cy	K1	K2	K3	P1	P2
<b>F</b>	<b>1939.13</b>	1	1.00	0.96	-0.77	-0.67	0.31	-0.23	-0.75	0.68
<b>Cx</b>	<b>12.9618</b>	0.23		1.00	-0.74	-0.62	0.27	-0.21	-0.74	0.64
<b>Cy</b>	<b>2.27566</b>	0.099			1.00	0.50	-0.23	0.17	0.56	-0.67
<b>K1</b>	<b>-0.406253</b>	0.0004				1.00	-0.77	0.66	0.82	-0.74
<b>K2</b>	<b>0.304579</b>	0.0016					1.00	-0.98	-0.32	0.30
<b>K3</b>	<b>-0.237124</b>	0.0031						1.00	0.21	-0.19
<b>P1</b>	<b>-0.000347746</b>	2.9e-005							1.00	-0.86
<b>P2</b>	<b>-4.90335e-005</b>	1.1e-005								1.00

Table 2. Calibration coefficients and correlation matrix.



### Camera Location

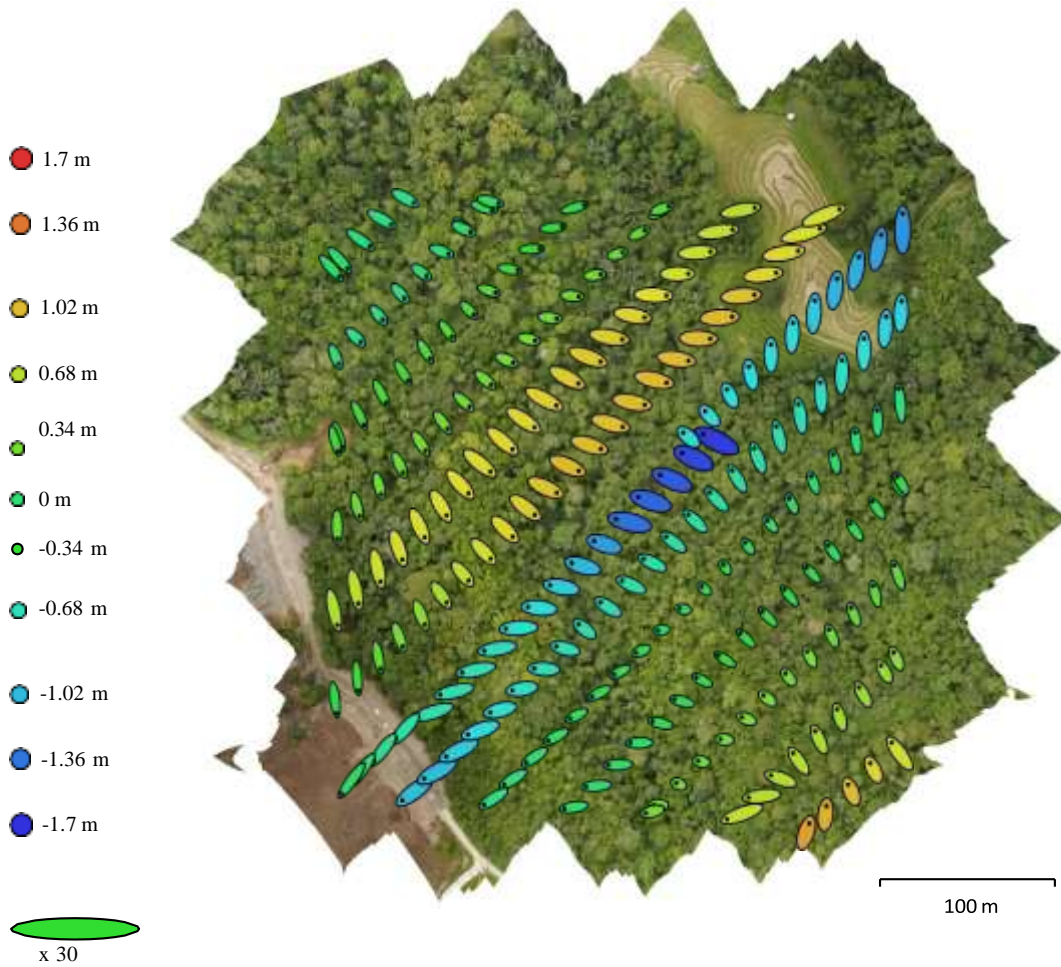


Fig. 3. Camera locations and error estimates.

Z error is represented by ellipse color. X, Y errors are represented by ellipse shapes.

Estimated camera locations are marked with a black dot.

X error (cm)	Y error (cm)	Z error (cm)	XY error (cm)	Total error (cm)
30.0137	24.5779	64.3109	38.793	75.1051

Table 3. Average camera location error.

X - Longitude, Y - Latitude, Z - Altitude.

*Digital Elevation Model*

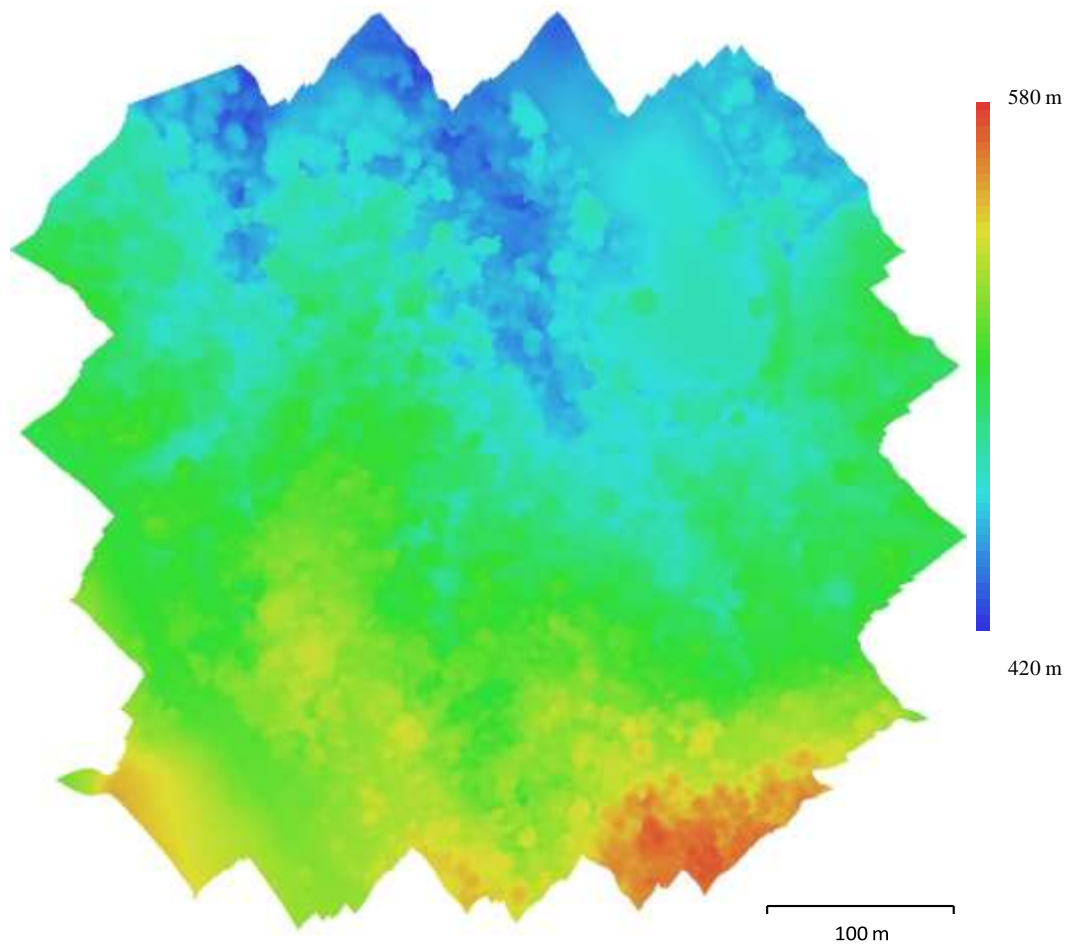


Fig. 4. Reconstructed digital elevation model.

Resolution: 14.1 cm/pix

Point density: 50.5 points/m<sup>2</sup>

## *Processing Parameters*

### **General**

Cameras	206
Aligned cameras	206
Coordinate system	WGS 84 (EPSG::4326)
Rotation angles	Yaw, Pitch, Roll

### **Point Cloud**

Points	194,811 of 207,418
RMS reprojection error	0.11288 (0.555485 pix)
Max reprojection error	0.34027 (12.7923 pix)
Mean key point size	4.04888 pix
Point colors	3 bands, uint8
Key points	No
Average tie point multiplicity	2.86292

### **Alignment parameters**

Accuracy	High
Generic preselection	Yes
Reference preselection	Yes
Key point limit	40,000
Tie point limit	4,000
Adaptive camera model fitting	No
Matching time	14 seconds
Alignment time	48 seconds
Software version	1.5.5.9097

### **Depth Maps**

Count	206
-------	-----

### **Depth maps generation parameters**

Quality	High
Filtering mode	Moderate
Processing time	1 minutes 31 seconds

### **Dense Point Cloud**

Points	21,222,750
Point colors	3 bands, uint8

### **Depth maps generation parameters**

Quality	High
Filtering mode	Moderate
Processing time	1 minutes 31 seconds

### **Dense cloud generation parameters**

Processing time	1 minutes 59 seconds
Software version	1.5.5.9097

### **Model**

Faces	4,244,547
Vertices	2,125,296
Vertex colors	3 bands, uint8
Texture	4,096 x 4,096, 4 bands, uint8

### **Depth maps generation parameters**

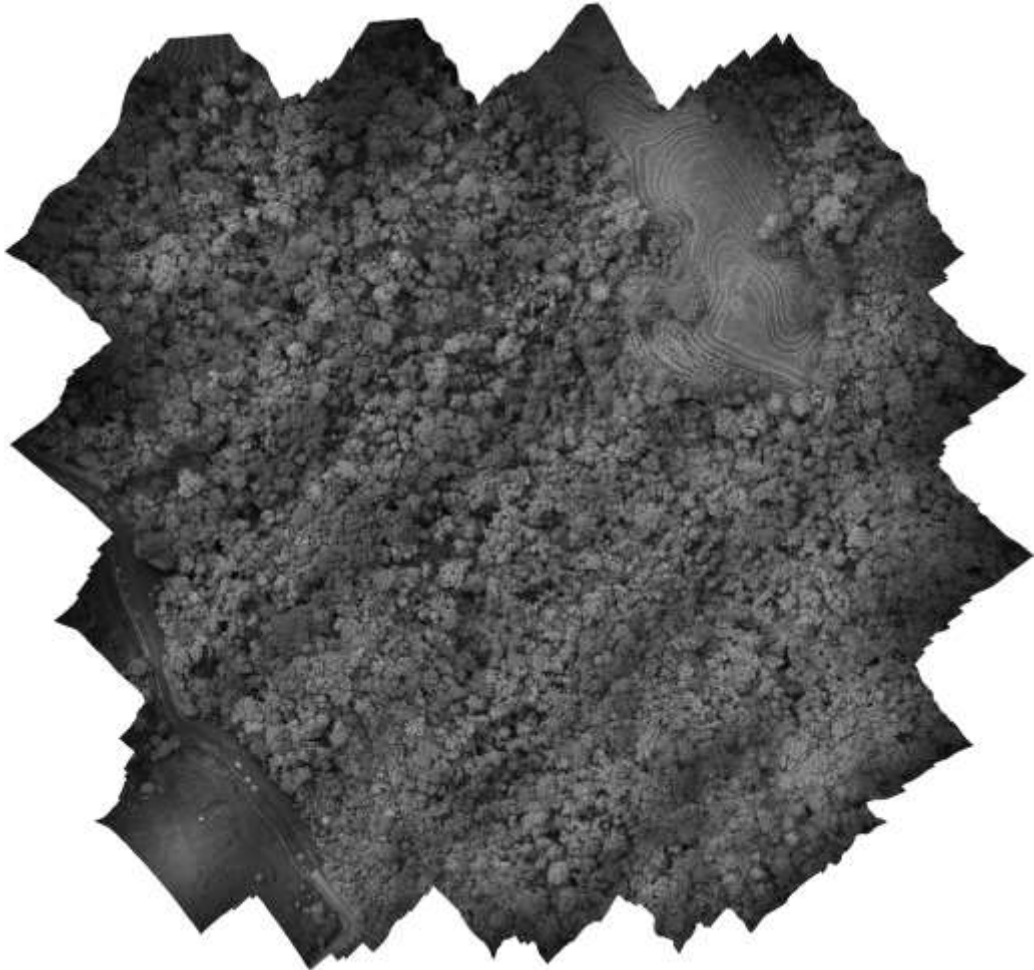
Quality	High
Filtering mode	Moderate
Processing time	1 minutes 31 seconds

<b>Reconstruction parameters</b>	
Surface type	Arbitrary
Source data	Dense cloud
<b>General</b>	
Interpolation	Enabled
Strict volumetric masks	No
Processing time	10 minutes 33 seconds
<b>Texturing parameters</b>	
Mapping mode	Orthophoto
Blending mode	Mosaic
Texture size	4,096
Enable hole filling	Yes
Enable ghosting filter	Yes
UV mapping time	10 seconds
Blending time	1 minutes 3 seconds
Software version	1.5.5.9097
<b>DEM</b>	
Size	4,832 x 4,651
Coordinate system	WGS 84 (EPSG::4326)
<b>Reconstruction parameters</b>	
Source data	Dense cloud
Interpolation	Enabled
Processing time	7 seconds
Software version	1.5.5.9097
<b>Orthomosaic</b>	
Size	7,282 x 6,856
Coordinate system	WGS 84 (EPSG::4326)
Colors	3 bands, uint8
<b>Reconstruction parameters</b>	
Blending mode	Mosaic
Surface	DEM
Enable hole filling	Yes
Processing time	34 seconds
Software version	1.5.5.9097
<b>Software</b>	
Version	1 5.5 build 9097
Platform	Windows 64

b. Processing Report Citra Foto Udara Band NIR

## **Agisoft Metashape**

Processing Report 16 June 2022



Survey Data

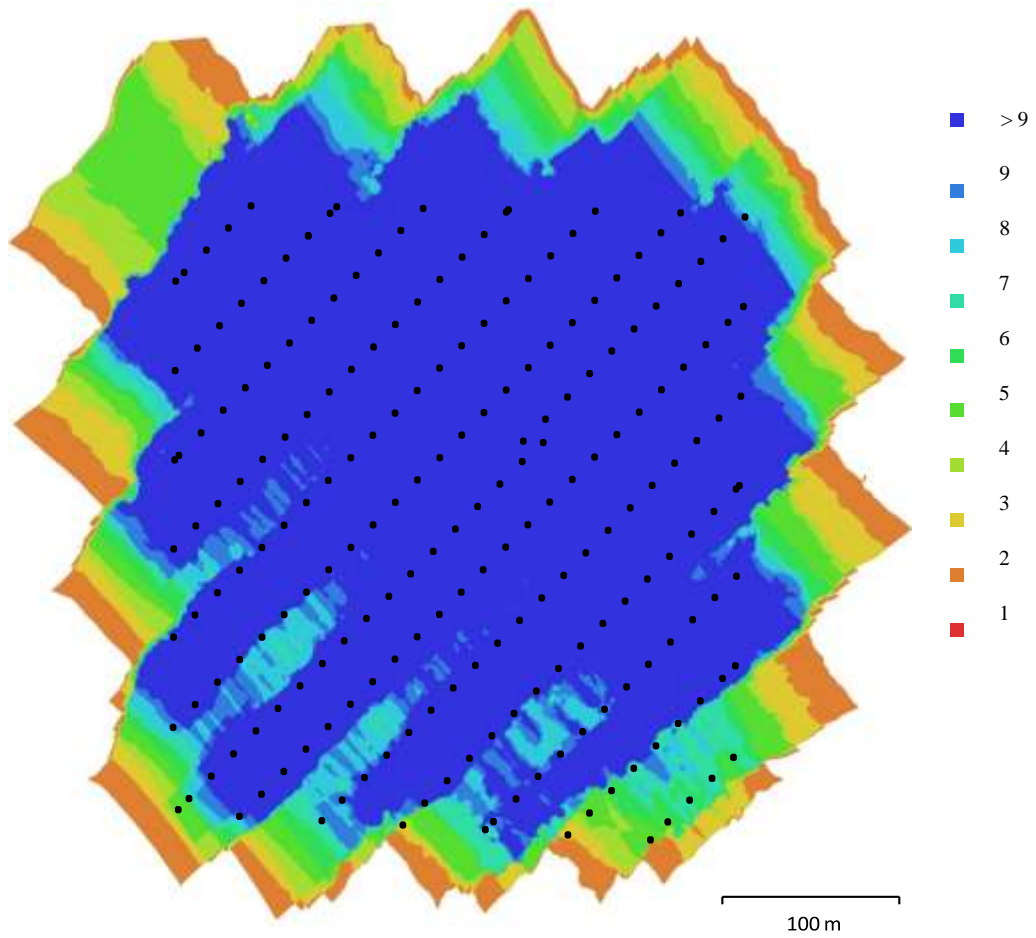


Fig. 1. Camera locations and image overlap.

Number of images:	206	Camera stations:	206
Flying altitude:	139 m	Tie points:	217,454
Ground resolution:	7.04 cm/pix	Projections:	626,089
Coverage area:	0.178 km <sup>2</sup>	Reprojection error:	0.428 pix

Camera Model	Resolution	Focal Length	Pixel Size	Precalibrated
FC6360 (5.74mm)	1600 x 1300	5.74 mm	3.01 x 3.01 $\mu$ m	Yes

Table 1. Cameras.

## Camera Calibration

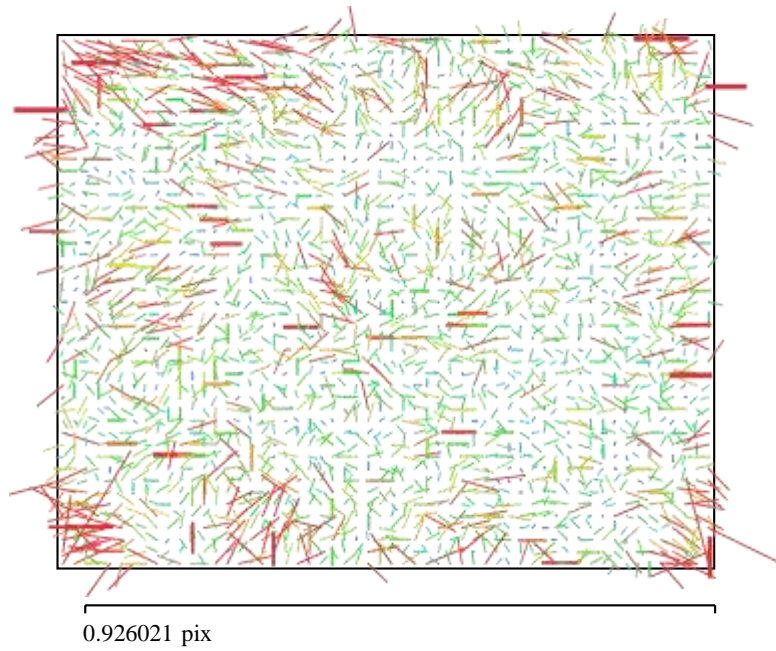


Fig. 2. Image residuals for FC6360 (5.74mm).

FC6360 (5.74mm)

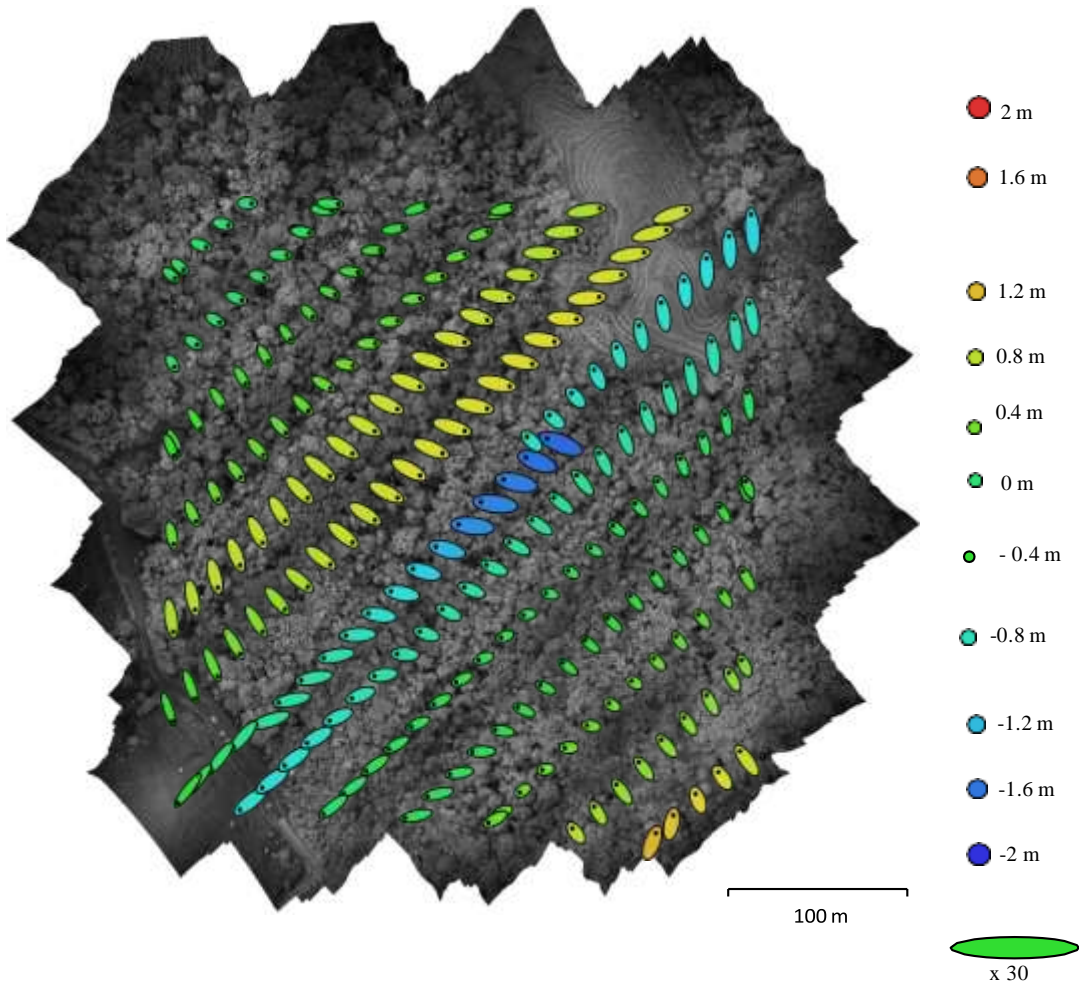
206 images, precalibrated

Type	Resolution	Focal Length	Pixel Size
Frame	1600 x 1300	5.74 mm	3.01 x 3.01 $\mu\text{m}$

	Value	Error	F	Cx	Cy	K1	K2	K3	P1	P2
<b>F</b>	<b>1923.97</b>	0.71	1.00	0.96	-0.76	-0.70	0.34	-0.27	-0.78	0.71
<b>Cx</b>	<b>12.356</b>	0.16		1.00	-0.73	-0.66	0.31	-0.24	-0.77	0.67
<b>Cy</b>	<b>0.671147</b>	0.065			1.00	0.51	-0.25	0.20	0.57	-0.67
<b>K1</b>	<b>-0.398565</b>	0.00028				1.00	-0.78	0.67	0.84	-0.76
<b>K2</b>	<b>0.29435</b>	0.001					1.00	-0.98	-0.36	0.33
<b>K3</b>	<b>-0.236257</b>	0.002						1.00	0.25	-0.23
<b>P1</b>	<b>-0.000412909</b>	2e-005							1.00	-0.86
<b>P2</b>	<b>0.00013082</b>	7.4e-006								1.00

Table 2. Calibration coefficients and correlation matrix.

*Camera Location*



**Fig. 3. Camera locations and error estimates.**

Z error is represented by ellipse color. X,Y errors are represented by ellipse shape.

Estimated camera locations are marked with a black dot.

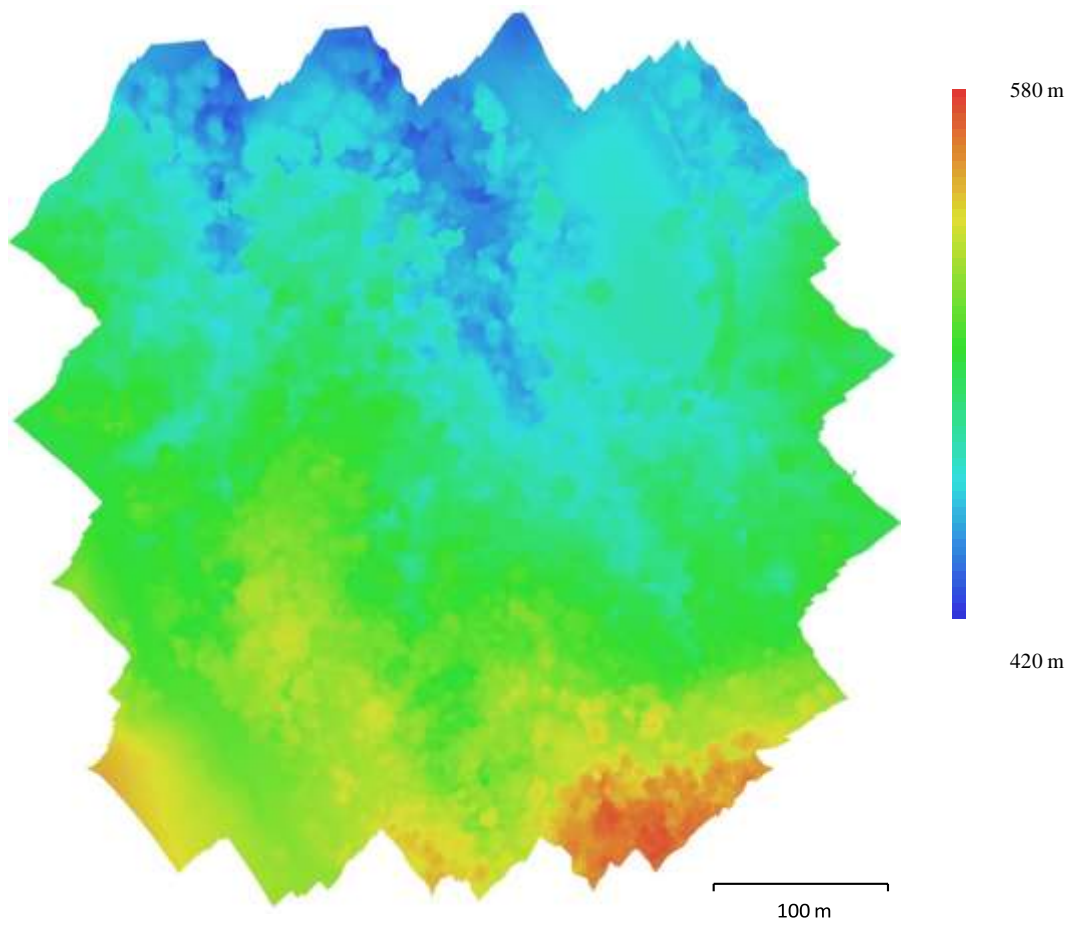
<b>X error (cm)</b>	<b>Y error (cm)</b>	<b>Z error (cm)</b>	<b>XY error (cm)</b>	<b>Total error (cm)</b>
28.3785	21.8369	64.5921	35.8077	73.8534

Table 3. Average camera location error.

X - Longitude, Y - Latitude, Z - Altitude.



*Digital Elevation Model*



**Fig. 4. Reconstructed digital elevation model.**

Resolution: 14.1 cm/pix

Point density: 50.4 points/m<sup>2</sup>

## ***Processing Parameters***

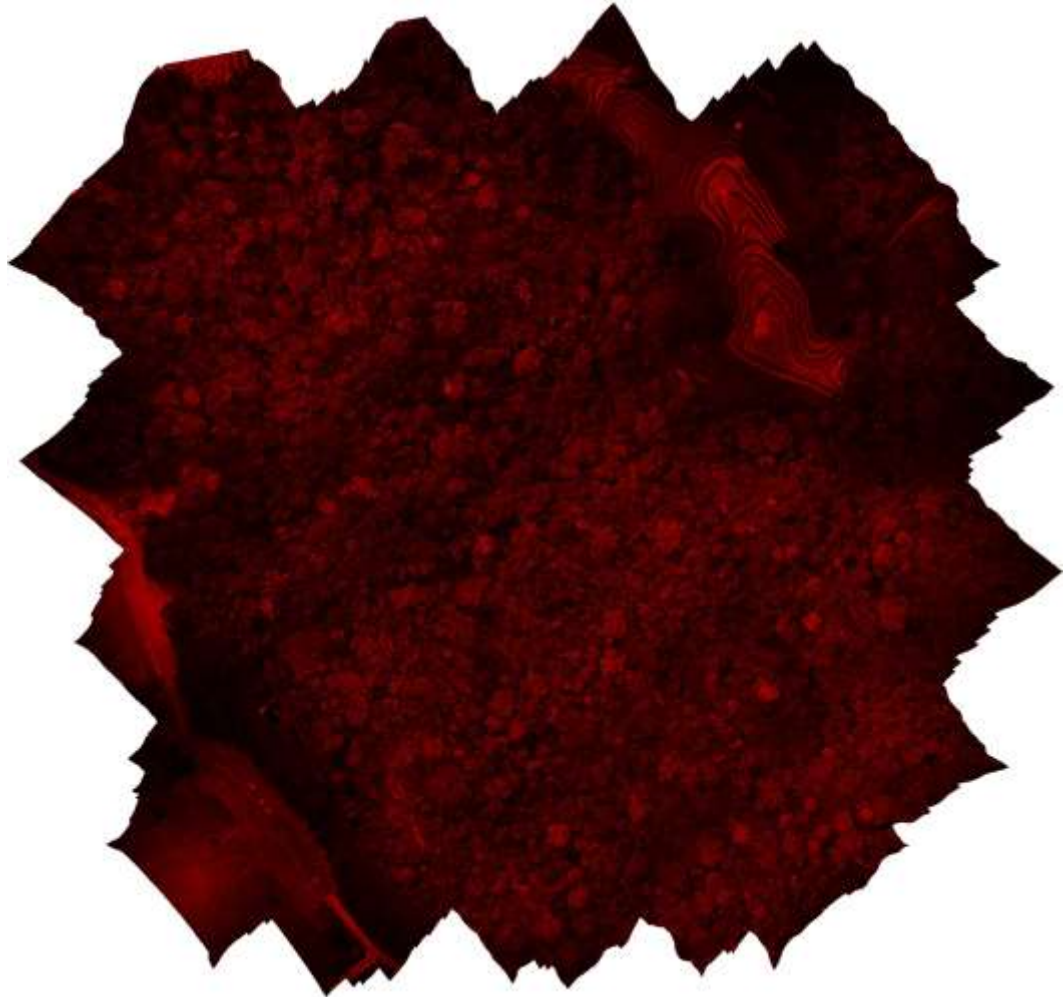
<i>General</i>	
Cameras	206
Aligned cameras	206
Coordinate system	WGS 84 (EPSG::4326)
Rotation angles	Yaw, Pitch, Roll
<i>Point Cloud</i>	
Points	217,454 of 233,449
RMS reprojection error	0.103864 (0.428153 pix)
Max reprojection error	0.314131 (10.0539 pix)
Mean key point size	3.46466 pix
Point colors	1 bands, uint16
Key points	No
Average tie point multiplicity	3.13926
<i>Alignment parameters</i>	
Accuracy	High
Generic preselection	Yes
Reference preselection	Yes
Key point limit	40,000
Tie point limit	4,000
Adaptive camera model fitting	No
Matching time	16 seconds
Alignment time	40 seconds
Software version	1.5.5.9097
<i>Depth Maps</i>	
Count	206
<i>Depth maps generation parameters</i>	
Quality	High
Filtering mode	Moderate
Processing time	1 minutes 54 seconds
<i>Dense Point Cloud</i>	
Points	21,108,549
Point colors	1 bands, uint16
<i>Depth maps generation parameters</i>	
Quality	High
Filtering mode	Moderate
Processing time	1 minutes 54 seconds
<i>Dense cloud generation parameters</i>	
Processing time	2 minutes 1 seconds
Software version	1.5.5.9097
<i>Model</i>	
Faces	4,221,708
Vertices	2,113,894
Vertex colors	1 bands, uint16
Texture	4,096 x 4,096, 2 bands, uint16

<i>Depth maps generation parameters</i>	
Quality	High
Filtering mode	Moderate
Processing time	1 minutes 54 seconds
<i>Reconstruction parameters</i>	
Surface type	Arbitrary
Source data	Dense cloud
<i>General</i>	
Interpolation	Enabled
Strict volumetric masks	No
Processing time	10 minutes 44 seconds
<i>Texturing parameters</i>	
Mapping mode	Orthophoto
Blending mode	Mosaic
Texture size	4,096
Enable hole filling	Yes
Enable ghosting filter	Yes
UV mapping time	10 seconds
Blending time	54 seconds
Software version	1.5.5.9097
<i>DEM</i>	
Size	4,135 x 3,913
Coordinate system	WGS 84 (EPSG::4326)
<i>Reconstruction parameters</i>	
Source data	Dense cloud
Interpolation	Enabled
Processing time	6 seconds
Software version	1.5.5.9097
<i>Orthomosaic</i>	
Size	7,248 x 6,808
Coordinate system	WGS 84 (EPSG::4326)
Colors	1 bands, uint16
<i>Reconstruction parameters</i>	
Blending mode	Mosaic
Surface	DEM
Enable hole filling	Yes
Processing time	36 seconds
Software version	1.5.5.9097
<i>Software</i>	
Version	1 5.5 build 9097
Platform	Windows 64

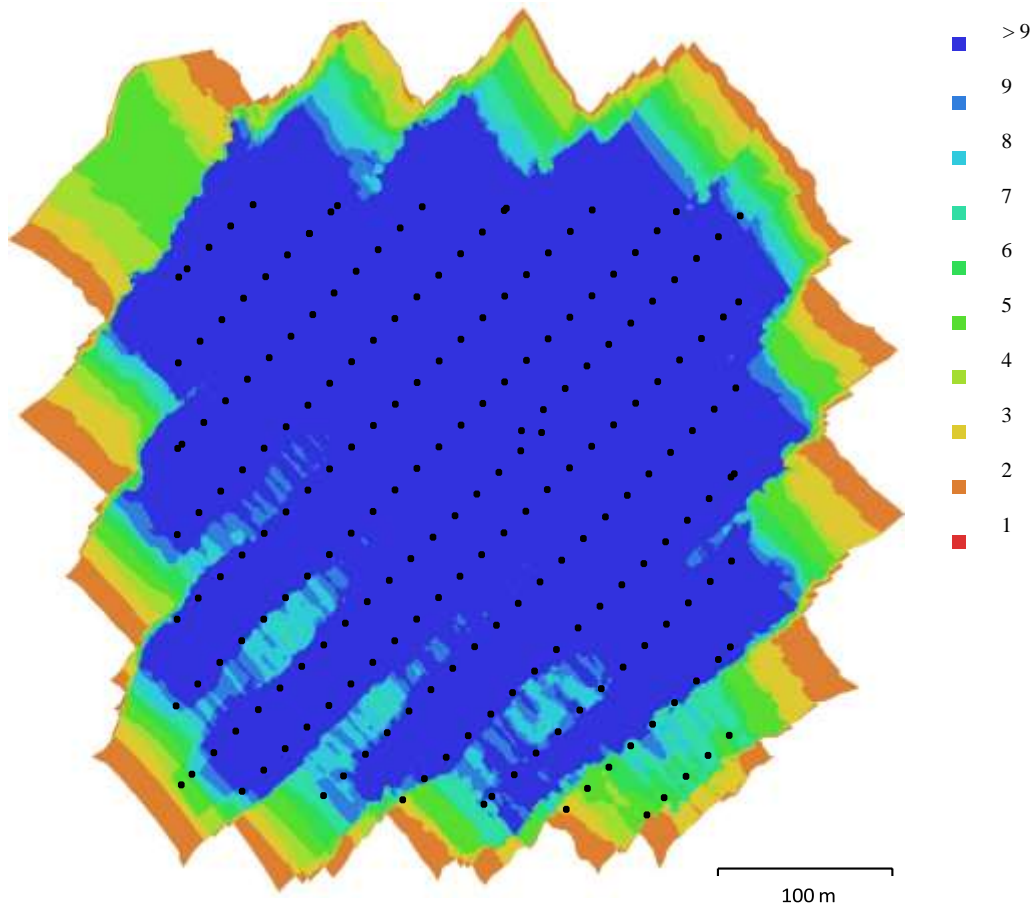
c. Processing Report Citra Foto Udara Band RED

## **Agisoft Metashape**

Processing Report 16 June 2022



*Survey Data*



**Fig. 1. Camera locations and image overlap.**

Number of images:	206	Camera stations:	206
Flying altitude:	139 m	Tie points:	203,539
Ground resolution:	7.06 cm/pix	Projections:	564,785
Coverage area:	0.179 km <sup>2</sup>	Reprojection error:	0.492 pix

Camera Model	Resolution	Focal Length	Pixel Size	Precalibrated
FC6360 (5.74mm)	1600 x 1300	5.74 mm	3.01 x 3.01 $\mu$ m	Yes

Table 1. Cameras.

## Camera Calibration

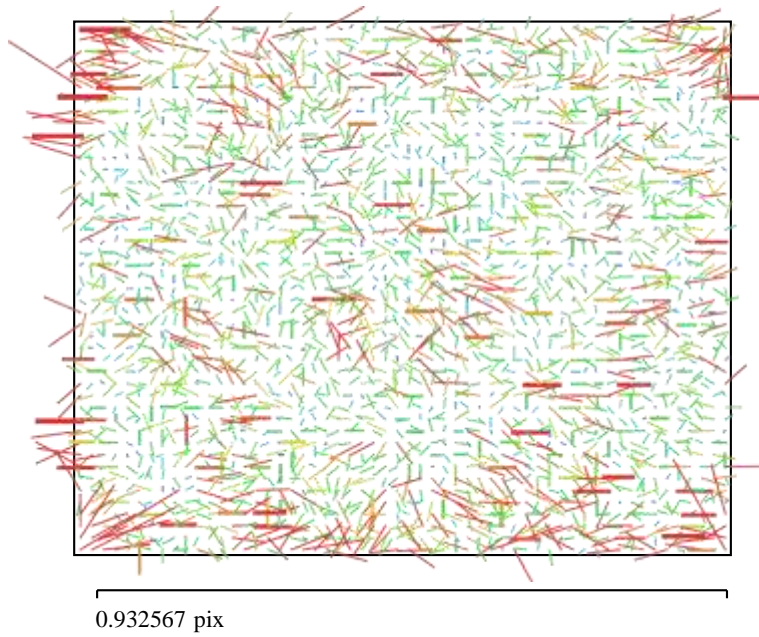


Fig. 2. Image residuals for FC6360 (5.74mm).

FC6360 (5.74mm)

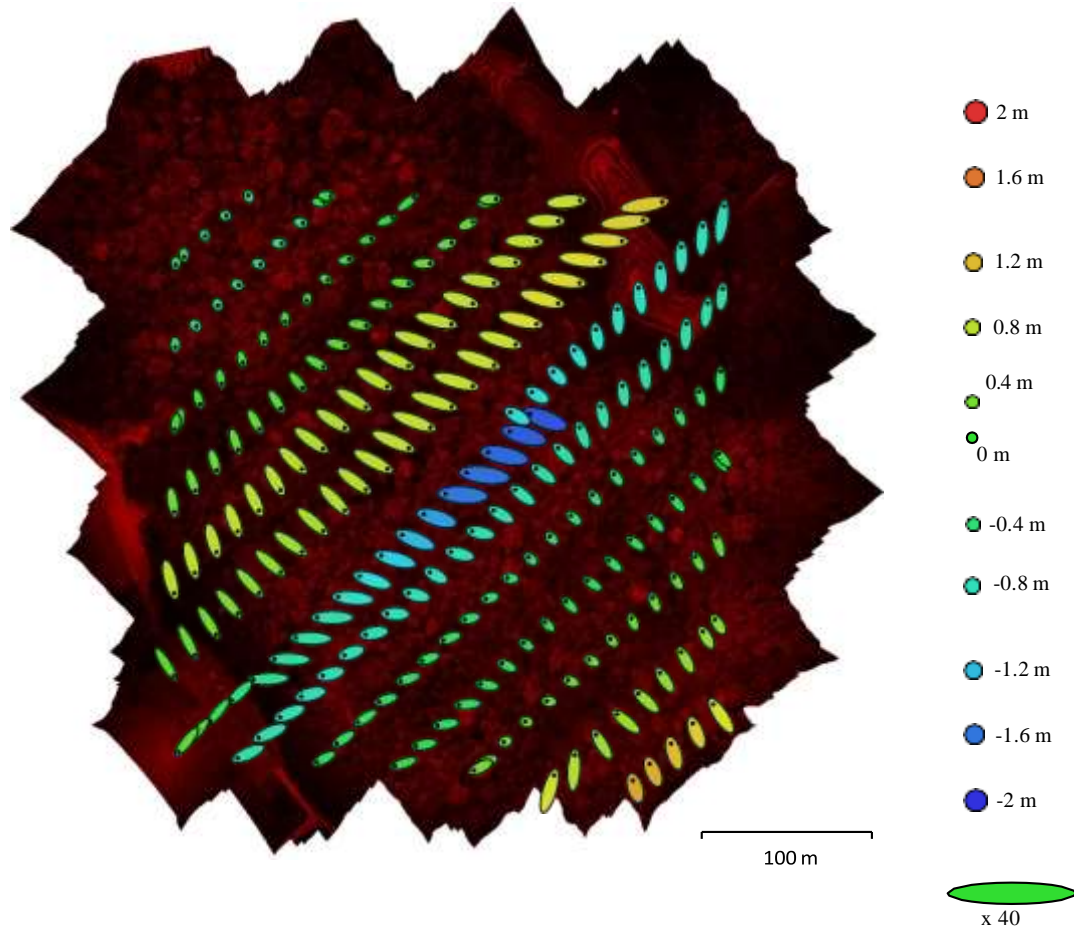
206 images, precalibrated

Type	Resolution	Focal Length	Pixel Size
<b>Frame</b>	<b>1600 x 1300</b>	<b>5.74 mm</b>	<b>3.01 x 3.01 <math>\mu</math>m</b>

	Value	Error	F	Cx	Cy	K1	K2	K3	P1	P2
<b>F</b>	<b>1915.76</b>	0.86	1.00	0.96	-0.76	-0.70	0.34	-0.28	-0.77	0.69
<b>Cx</b>	<b>16.7688</b>	0.19		1.00	-0.73	-0.66	0.31	-0.25	-0.76	0.66
<b>Cy</b>	<b>8.14053</b>	0.077			1.00	0.51	-0.25	0.20	0.56	-0.66
<b>K1</b>	<b>-0.393277</b>	0.00033				1.00	-0.77	0.66	0.84	-0.75
<b>K2</b>	<b>0.281331</b>	0.0012					1.00	-0.98	-0.36	0.32
<b>K3</b>	<b>-0.220462</b>	0.0023						1.00	0.25	-0.22
<b>P1</b>	<b>0.000164342</b>	2.4e-005							1.00	-0.85
<b>P2</b>	<b>-0.000287295</b>	8.5e-006								1.00

Table 2. Calibration coefficients and correlation matrix.

*Camera Locations*



**Fig. 3. Camera locations and error estimates.**

Z error is represented by ellipse color. X,Y errors are represented by ellipse shape.

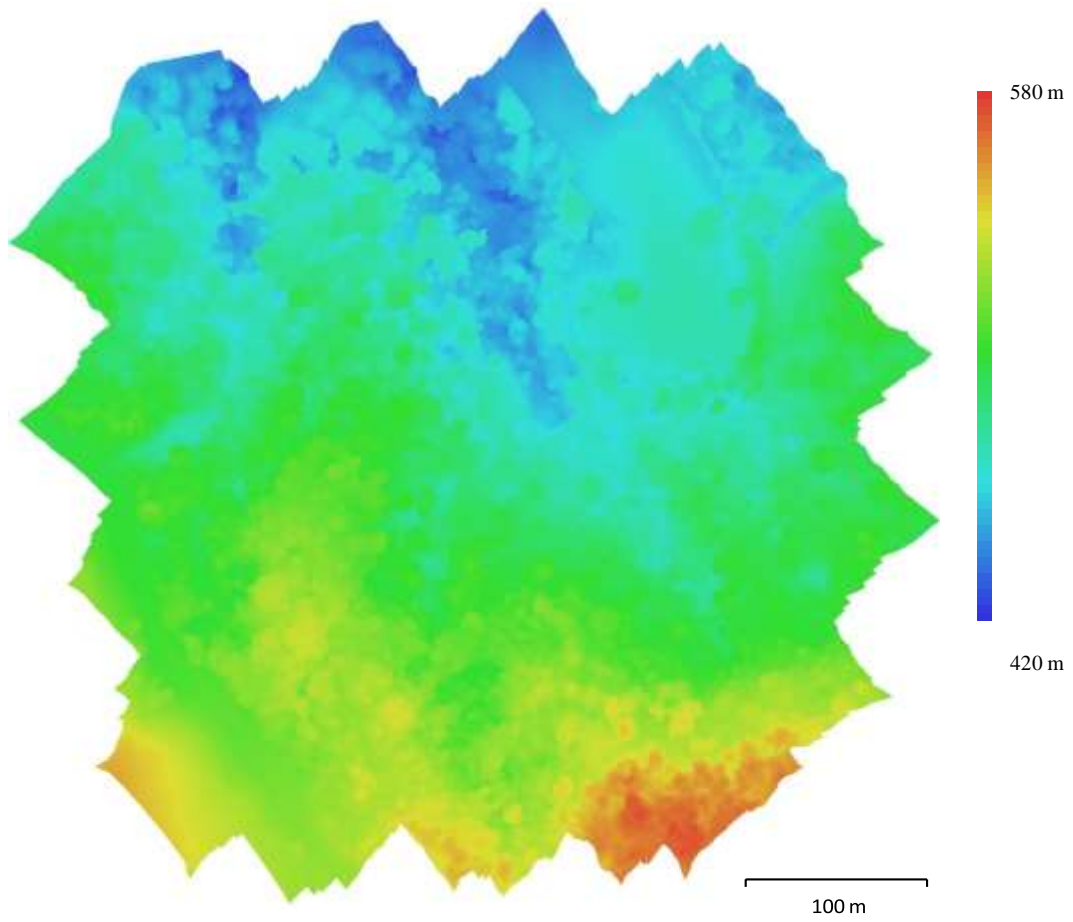
Estimated camera locations are marked with a black dot.

X error (cm)	Y error (cm)	Z error (cm)	XY error (cm)	Total error (cm)
23.9727	16.9276	65.4568	29.3467	71.7344

Table 3. Average camera location error.

X - Longitude, Y - Latitude, Z - Altitude.

*Digital Elevation Model*



**Fig. 4. Reconstructed digital elevation model.**

Resolution: 14.1 cm/pix

Point density: 50.2 points/m<sup>2</sup>



## ***Processing Parameters***

### ***General***

Cameras	206
Aligned cameras	206
Coordinate system	WGS 84 (EPSG::4326)
Rotation angles	Yaw, Pitch, Roll

### ***Point Cloud***

Points	203,539 of 217,973
RMS reprojection error	0.105502 (0.492281 pix)
Max reprojection error	0.318782 (10.5078 pix)
Mean key point size	3.80534 pix
Point colors	1 bands, uint16
Key points	No
Average tie point multiplicity	2.99168

### ***Alignment parameters***

Accuracy	High
Generic preselection	Yes
Reference preselection	Yes
Key point limit	40,000
Tie point limit	4,000
Adaptive camera model fitting	No
Matching time	12 seconds
Alignment time	36 seconds
Software version	1.5.5.9097

### ***Depth Maps***

Count	206
-------	-----

### ***Depth maps generation parameters***

Quality	High
Filtering mode	Moderate
Processing time	1 minutes 39 seconds

### ***Dense Point Cloud***

Points	20,976,543
Point colors	1 bands, uint16

### ***Depth maps generation parameters***

Quality	High
Filtering mode	Moderate
Processing time	1 minutes 39 seconds

### ***Dense cloud generation parameters***

Processing time	1 minutes 59 seconds
Software version	1.5.5.9097

### ***Model***

Faces	4,195,307
Vertices	2,100,791
Vertex colors	1 bands, uint16
Texture	4,096 x 4,096, 2 bands, uint16

### ***Depth maps generation parameters***

Quality	High
Filtering mode	Moderate

Processing time	1 minutes 39 seconds
<b><i>Reconstruction parameters</i></b>	
Surface type	Arbitrary
Source data	Dense cloud
<b><i>General</i></b>	
Interpolation	Enabled
Strict volumetric masks	No
Processing time	10 minutes 16 seconds
<b><i>Texturing parameters</i></b>	
Mapping mode	Orthophoto
Blending mode	Mosaic
Texture size	4,096
Enable hole filling	Yes
Enable ghosting filter	Yes
UV mapping time	10 seconds
Blending time	53 seconds
Software version	1.5.5.9097
<b><i>DEM</i></b>	
Size	4,453 x 4,222
Coordinate system	WGS 84 (EPSG::4326)
<b><i>Reconstruction parameters</i></b>	
Source data	Dense cloud
Interpolation	Enabled
Processing time	6 seconds
Software version	1.5.5.9097
<b><i>Orthomosaic</i></b>	
Size	7,282 x 6,862
Coordinate system	WGS 84 (EPSG::4326)
Colors	1 bands, uint16
<b><i>Reconstruction parameters</i></b>	
Blending mode	Mosaic
Surface	DEM
Enable hole filling	Yes
Processing time	35 seconds
Software version	1.5.5.9097
<b><i>Software</i></b>	
Version	1 5.5 build 9097
Platform	Windows 64

#### Lampiran 4. Dokumentasi Penelitian



Gambar 19. Pembuatan Petak Ukur



Gambar 20. Pengukuran Tinggi Pohon



Gambar 21. Pengukuran Diameter Pohon



Gambar 22. Mencatat Hasil Pengukuran



Gambar 23. Dokumentasi Bersama POLHUT UPT KPH Ajatappareng



Gambar 24. Pengambilan Data Foto Udara menggunakan *Drone DJI P4 Multispectral*