

DAFTAR PUSTAKA

Abbas, A. K., et al. (2015). Cellular and Molecular IMMUNOLOGY. Philadelphia, ELSEVIER.

Anwar, A. I., et al. (2016). "Effectiveness of Topical Mangosteen Pericarp Extract Against Angiogenesis in Mice Exposed to Ultra Violet B." **15**(8): 745-751.

Attiq, A., et al. (2018). "Raging the war against inflammation with natural products." **9**: 976.

Aukkanimart, R., et al. (2015). "Anthelmintic, anti-inflammatory and antioxidant effects of Garcinia mangostana extract in hamster opisthorchiasis." **154**: 5-13.

Burnet, et al. (2015). Properties and Overview of Immune Responses. Cellular and Molecular Immunology. Abbas, Lichtman and Pillai, Elsevier: 1-12.

Casale, G. P., et al. (1997). "Inflammatory response of mouse skin exposed to the very potent carcinogen dibenzo [a, l] pyrene: a model for tumor promotion." **36**(1): 71-78.

Catorce, M. N., et al. (2016). "Alpha-mangostin attenuates brain inflammation induced by peripheral lipopolysaccharide administration in C57BL/6J mice." Journal of neuroimmunology **297**: 20-27.

Caughey, G. E., et al. (2001). "Roles of cyclooxygenase (COX)-1 and COX-2 in prostanoid production by human endothelial cells: selective up-regulation of prostacyclin synthesis by COX-2." **167**(5): 2831-2838.

Chen, L., et al. (2018). "Inflammatory responses and inflammation-associated diseases in organs." **9**(6): 7204.

Choi, G., et al. (2009). "Anti-inflammatory activity of Chrysanthemum indicum extract in acute and chronic cutaneous inflammation." Journal of pharmacology **123**(1): 149-154.



Dzoyem, J. P., et al. (2015). "Anti-inflammatory activity of benzophenone and xanthone derivatives isolated from *Garcinia* (Clusiaceae) species." **14**: 153-158.

Fu, Y., et al. (2014). "Immune regulation and anti-inflammatory effects of isogarcinol extracted from *Garcinia mangostana* L. against collagen-induced arthritis." **62**(18): 4127-4134.

Gutierrez-Orozco, F., et al. (2013). " α -Mangostin: anti-inflammatory activity and metabolism by human cells." **61**(16): 3891-3900.

Huang, M. T., et al. (2006). "Inhibitory effects of black tea theaflavin derivatives on 12-O-tetradecanoylphorbol-13-acetate-induced inflammation and arachidonic acid metabolism in mouse ears." **50**(2): 115-122.

Ibrahim, M. Y., et al. (2016). " α -Mangostin from *Garcinia mangostana* Linn: an updated review of its pharmacological properties." **9**(3): 317-329.

Khan, A. Q., et al. (2012). "Caffeic acid attenuates 12-O-tetradecanoyl-phorbol-13-acetate (TPA)-induced NF- κ B and COX-2 expression in mouse skin: abrogation of oxidative stress, inflammatory responses and proinflammatory cytokine production." **50**(2): 175-183.

Khan, A. Q., et al. (2013). "Geraniol attenuates 12-O-tetradecanoylphorbol-13-acetate (TPA)-induced oxidative stress and inflammation in mouse skin: possible role of p38 MAP Kinase and NF- κ B." **94**(3): 419-429.

Khan, A. Q., et al. (2012). "Soy isoflavones (daidzein & genistein) inhibit 12-O-tetradecanoylphorbol-13-acetate (TPA)-induced cutaneous inflammation via modulation of COX-2 and NF- κ B in Swiss albino mice." **302**(2-3): 266-274.

Kumar, V., et al. (2018). ROBBINS BASIC PATHOLOGY. Philadelphia, ELSEVIER.

Kupper, T. S. and R. C. J. N. R. I. Fuhlbrigge (2004). "Immune surveillance in the skin: mechanisms and clinical consequences." **4**(3): 211.

Lee, S. H., et al. (2012). "Suppression of 12-O-tetradecanoylphorbol-13-acetate (TPA)-induced skin inflammation in mice by transduced Tat-Annexin protein." **45**(6): 354-359.

Liu, W., et al. (2018). "Glycyrrhizic acid from licorice down-regulates inflammatory responses via blocking MAPK and PI3K/Akt-dependent NF- κ B signaling pathways in TPA-induced skin inflammation." **9**(9): 1502-1510.



Loynes, C. A., et al. (2018). "PGE2 production at sites of tissue injury promotes an anti-inflammatory neutrophil phenotype and determines the outcome of inflammation resolution in vivo." **4**(9): eaar8320.

Madsen, M., et al. (2016). "Effect of 12-O-tetradecanoylphorbol-13-acetate-induced psoriasis-like skin lesions on systemic inflammation and atherosclerosis in hypercholesterolaemic apolipoprotein E deficient mice." BMC dermatology **16**(1): 9.

Maione, F., et al. (2016). "Medicinal plants with anti-inflammatory activities." **30**(12): 1343-1352.

Marzaimi, I. N. and W. M. Aizat (2019). Current review on mangosteen usages in antiinflammation and other related disorders. Bioactive Food as Dietary Interventions for Arthritis and Related Inflammatory Diseases, Elsevier: 273-289.

Modlin, et al. (2012). Innate and Adaptive Immunity in the Skin. Fitzpatrick's Dermatology In General Medicine. Goldsmith, Katz, Gilchrest and Leffell, Mc Graw Hill: 105-126.

Mortaz, E., et al. (2018). "Update on neutrophil function in severe inflammation." **9**: 2171.

Nakatani, K., et al. (2002). "Inhibitions of histamine release and prostaglandin E2 synthesis by mangosteen, a Thai medicinal plant." Biological and Pharmaceutical Bulletin **25**(9): 1137-1141.

Ovalle-Magallanes, B., et al. (2017). "Medicinal properties of mangosteen (*Garcinia mangostana* L.): a comprehensive update." **109**: 102-122.

Park, S.-H., et al. (2016). "Protective effects of ginsenoside F2 on 12-O-tetradecanoylphorbol-13-acetate-induced skin inflammation in mice." **478**(4): 1713-1719.

Pasparakis, M., et al. (2014). "Mechanisms regulating skin immunity and inflammation." **14**(5): 289.

Pedraza-Chaverri, J., et al. (2008). "Medicinal properties of mangosteen (*Garcinia mangostana*)." **46**(10): 3227-3239.

Pothitirat, W., et al. (2009). "Comparison of bioactive compounds content, free radical scavenging and anti-acne inducing bacteria activities of extracts from the mangosteen fruit rind at two stages of maturity." **80**(7): 442-447.



Puteri, F. H., et al. (2019). "The comparative toxicity of xanthenes and tannins in mangosteen (*Garcinia mangostana* Linn.) pericarp extract against BHK-21 fibroblast cell culture." **10**(2): 319.

Sato, H., et al. (2003). "Pharmacological Profiles of High-Concentration (20 µg/g) Tacalcitol Ointment: Effects on Cutaneous Inflammation, Epidermal Proliferation, and Differentiation in Mice." The Journal of dermatology **30**(7): 510-524.

Shih, Y.-W., et al. (2010). "α-Mangostin suppresses phorbol 12-myristate 13-acetate-induced MMP-2/MMP-9 expressions via αβ3 integrin/FAK/ERK and NF-κB signaling pathway in human lung adenocarcinoma A549 cells." **58**(1): 31-44.

Stanley, P. L., et al. (1991). "Mouse skin inflammation induced by multiple topical applications of 12-O-tetradecanoylphorbol-13-acetate." **4**(4): 262-2.

Suttirak, W., et al. (2014). "In vitro antioxidant properties of mangosteen peel extract." **51**(12): 3546-3558.

Wahid, S. and U. A. Miskad (2016). IMUNOLOGI. Surabaya, Brillan Internasional.

Wej, W.-C., et al. (2011). "Topical application of marine briarane-type diterpenes effectively inhibits 12-O-tetradecanoylphorbol-13-acetate-induced inflammation and dermatitis in murine skin." **18**(1): 94.

Widowati, W., et al. (2016). "Anti-inflammatory effect of mangosteen (*Garcinia mangostana* L.) peel extract and its compounds in LPS-induced RAW264. 7 cells." **22**(3): 147-153.

Xie, Z., et al. (2015). "Daily consumption of a mangosteen-based drink improves in vivo antioxidant and anti-inflammatory biomarkers in healthy adults: a randomized, double-blind, placebo-controlled clinical trial." **3**(4): 342-348.

Xu, X.-T., et al. (2016). "Anti-inflammatory activity effect of 2-substituted-1, 4, 5, 6-tetrahydrocyclopenta [b] pyrrole on TPA-induced skin inflammation in mice." Bioorganic & medicinal chemistry letters **26**(21): 5334-5339.

Yasukawa, K., et al. (2009). "Relative inhibitory activity of bile acids against 12-O-tetradecanoylphorbol-13-acetate-induced inflammation, and chenodeoxycholic acid inhibition of tumour promotion in mouse skin two-stage genesis." **61**(8): 1051-1056.



Zainuddin (2014). Metodeologi Penelitian Kefarmasian dan Kesehatan. Surabaya, Airlangga University Press.

Zhu, G., et al. (2017). "12-O-Tetradecanoylphorbol-13-acetate (TPA) is anti-tumorigenic in liver cancer cells via inhibiting YAP through AMOT." 7: 44940.

LAMPIRAN

1. Mencit TPA



2. Mencit TPA + Base cream





3. Mencit TPA + GM 2,5%



4. Mencit TPA + GM 5%



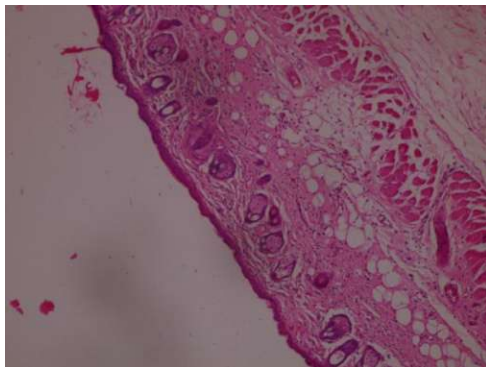
5. Mencit TPA + GM 10%



6. Mencit TPA + GM 20%

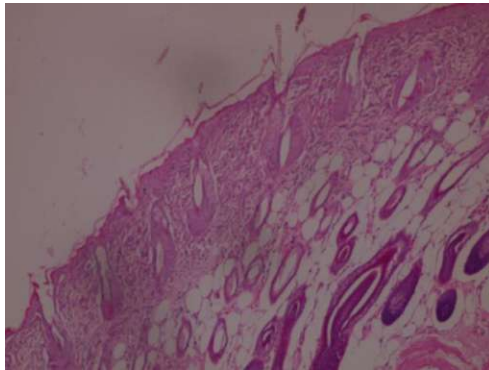


7. Histopatologi *preliminary study* pada 6 jam setelah induksi TPA

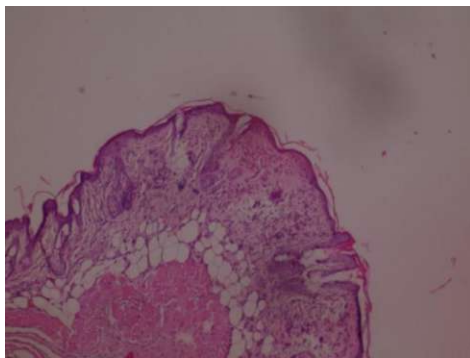


8. Histopatologi *preliminary study* pada 12 jam setelah induksi TPA

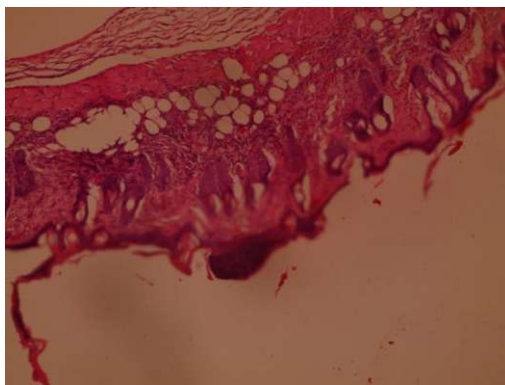




9. Histopatologi *preliminary study* pada 24 jam setelah induksi TPA

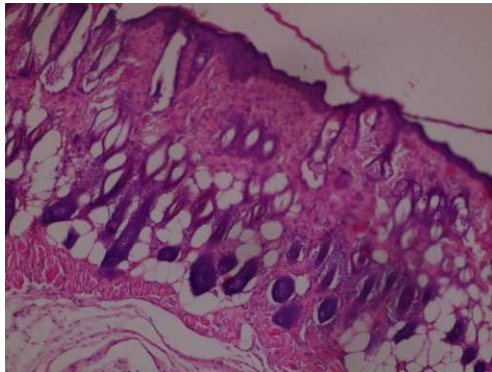


10. Histopatologi *preliminary study* pada 48 jam setelah induksi TPA

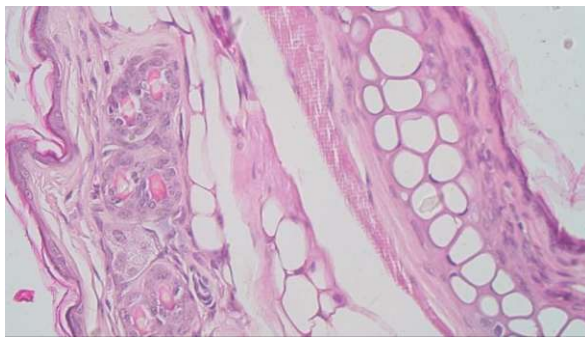


11. Histopatologi *preliminary study* pada 48 jam setelah induksi TPA

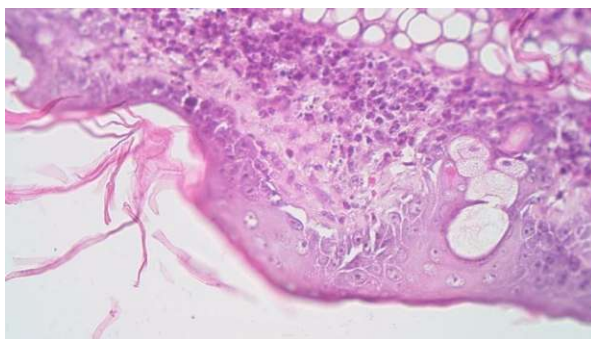




12. Histopatologi Kontrol

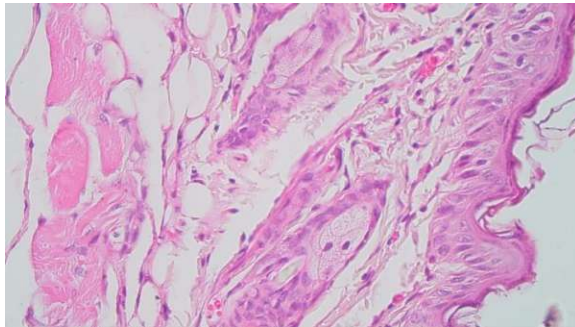


13. Histopatologi TPA

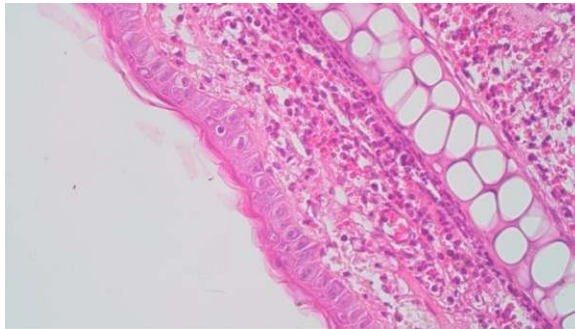


14. Histopatologi TPA + Base cream

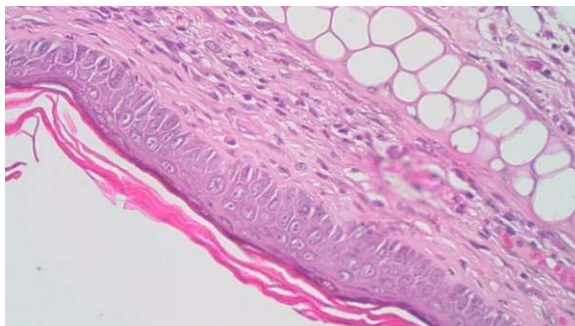




15. Histopatologi TPA + GM 2,5%

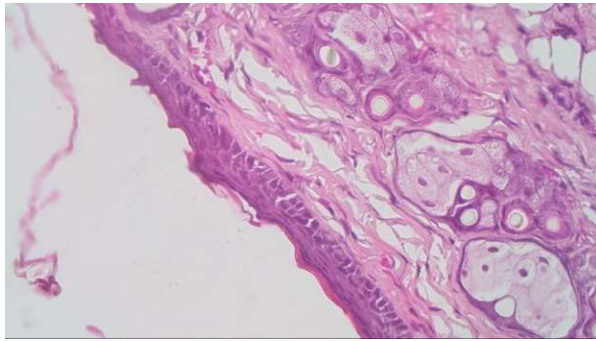


16. Histopatologi TPA + GM 5%

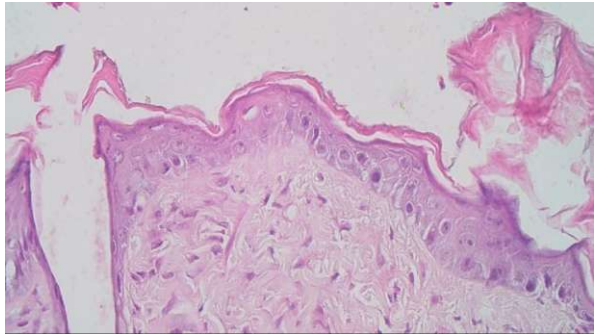


17. Histopatologi TPA + GM 10%





18. Histopatologi + TPA 20%



19. Pemeriksaan ELISA





20. Krim ekstrak kulit *Garciana mangostana*



21. Uji Normalitas

Tests of Normality

	Kelompok	Kolmogorov-Smirnov ^a			Shapiro-Wilk		
		Statistic	df	Sig.	Statistic	df	Sig.
Kadar COX-2	Kontrol/Tanpa Perlakuan	.230	5	.200*	.963	5	.827
	TPA	.197	5	.200*	.954	5	.768
	TPA + Base Cream	.264	5	.200*	.853	5	.203
	TPA + GM 2.5%	.160	5	.200*	.973	5	.894
	TPA + GM 5%	.166	5	.200*	.971	5	.882
	TPA + GM 10%	.198	5	.200*	.954	5	.767



Infiltrasi Netrofil	TPA + GM 20%	.228	5	.200*	.863	5	.240
	Kontrol/Tanpa Perlakuan	.367	5	.026	.684	5	.006
	TPA	.367	5	.026	.684	5	.006
	TPA + Base Cream	.473	5	.001	.552	5	.000
	TPA + GM 2.5%	.473	5	.001	.552	5	.000
	TPA + GM 5%	.367	5	.026	.684	5	.006
	TPA + GM 10%	.367	5	.026	.684	5	.006
	TPA + GM 20%	.473	5	.001	.552	5	.000
	Ketebalan Epidermis	Kontrol/Tanpa Perlakuan	.192	5	.200*	.981	5
TPA		.181	5	.200*	.977	5	.917
TPA + Base Cream		.272	5	.200*	.821	5	.119
TPA + GM 2.5%		.316	5	.115	.837	5	.157
TPA + GM 5%		.277	5	.200*	.859	5	.224
TPA + GM 10%		.195	5	.200*	.922	5	.543
TPA + GM 20%		.198	5	.200*	.966	5	.852
Edema		Kontrol/Tanpa Perlakuan	.	5	.	.	5
	TPA	.	5	.	.	5	.
	TPA + Base Cream	.	5	.	.	5	.
	TPA + GM 2.5%	.	5	.	.	5	.
	TPA + GM 5%	.	5	.	.	5	.
	TPA + GM 10%	.	5	.	.	5	.
	TPA + GM 20%	.	5	.	.	5	.
	Permeabilitas Vaskular	Kontrol/Tanpa Perlakuan	.	5	.	.	5
TPA		.	5	.	.	5	.
TPA + Base Cream		.	5	.	.	5	.
TPA + GM 2.5%		.	5	.	.	5	.
TPA + GM 5%		.	5	.	.	5	.
TPA + GM 10%		.	5	.	.	5	.
TPA + GM 20%		.	5	.	.	5	.

* Tujuh adalah batas bawah dari signifikansi yang sebenarnya.

Signifikansi Koreksi



22. Uji One Way Anova Kadar COX-2 Jaringan dan Ketebalan Epidermis

		ANOVA				
		Sum of Squares	df	Mean Square	F	Sig.
Kadar COX-2	Between Groups	.046	6	.008	.486	.813
	Within Groups	.444	28	.016		
	Total	.490	34			
Ketebalan Epidermis	Between Groups	39058.357	6	6509.726	8.754	.000
	Within Groups	20821.926	28	743.640		
	Total	59880.283	34			

23. Uji Kruskal-Wallis Infiltrasi Netrofil

Test Statistics^{a,b}

Infiltrasi Netrofil	
Kruskal-Wallis H	27.897
Df	6
Asymp. Sig.	.000

a. Kruskal Wallis Test

b. Grouping Variable: Kelompok

24. Analisa deskriptif



Descriptives

		N	Mean	Std. Deviation	Std. Error	95% Confidence Interval for Mean	Minimum	Maximum	
						Lower Bound	Upper Bound		
Kadar COX-2	Kontrol/Tanpa Perlakuan	5	.513660	.0721461	.0322647	.424079	.603241	.4175	.6056
	TPA	5	.603260	.1649313	.0737595	.398471	.808049	.3928	.7950
	TPA + Base Cream	5	.634040	.2343504	.1048047	.343055	.925025	.4463	1.0116
	TPA + GM 2.5%	5	.560840	.1191426	.0532822	.412905	.708775	.4026	.6986
	TPA + GM 5%	5	.563760	.0785365	.0351226	.466244	.661276	.4526	.6556
	TPA + GM 10%	5	.593840	.0197091	.0088142	.569368	.618312	.5721	.6199
	TPA + GM 20%	5	.552380	.0531048	.0237492	.486442	.618318	.4912	.6048
	Total	35	.574540	.1200234	.0202877	.533311	.615769	.3928	1.0116
Infiltrasi Netrofil	Kontrol/Tanpa Perlakuan	5	1.40	.548	.245	.72	2.08	1	2
	TPA	5	3.40	.548	.245	2.72	4.08	3	4
	TPA + Base Cream	5	3.80	.447	.200	3.24	4.36	3	4
	TPA + GM 2.5%	5	2.80	.447	.200	2.24	3.36	2	3
	TPA + GM 5%	5	2.40	.548	.245	1.72	3.08	2	3
	TPA + GM 10%	5	1.40	.548	.245	.72	2.08	1	2
	TPA + GM 20%	5	1.20	.447	.200	.64	1.76	1	2
	Total	35	2.34	1.083	.183	1.97	2.71	1	4



Ketebalan Epidermis	Kontrol/Tanpa Perlakuan	5	56.571	23.765	10.628	27.062	86.080	21.613	86.413
			40	906	436	13	67		
	TPA	5	107.90760	48.734487	21.794725	47.39574	168.41946	51.393	179.157
	TPA + Base Cream	5	155.80740	31.573407	14.120057	116.60384	195.01096	123.729	189.690
	TPA + GM 2.5%	5	64.83060	25.985298	11.620978	32.56559	97.09561	42.397	108.901
	TPA + GM 5%	5	67.99400	11.059497	4.945957	54.26182	81.72618	52.678	77.477
	TPA + GM 10%	5	62.99480	18.701528	8.363577	39.77379	86.21581	44.999	89.408
	TPA + GM 20%	5	67.59160	11.019877	4.928239	53.90862	81.27458	54.774	84.143
	Total	35	83.38534	41.966472	7.093629	68.96936	97.80133	21.613	189.690

25. Uji Post Hoc

Multiple Comparisons

Dependent Variable	(I) Kelompok	(J) Kelompok	Mean Difference (I-J)	Std. Error	Sig.	95% Confidence Interval		
						Lower Bound	Upper Bound	
Kadar COX-2	Bonferroni	Kontrol/Tanpa Perlakuan	TPA	-.0896000	.0796058	1.000	-.355515	.176315
			TPA + Base Cream	-.1203800	.0796058	1.000	-.386295	.145535
			TPA + GM 2.5%	-.0471800	.0796058	1.000	-.313095	.218735
			TPA + GM 5%	-.0501000	.0796058	1.000	-.316015	.215815
			TPA + GM 10%	-.0801800	.0796058	1.000	-.346095	.185735



	TPA + GM 20%	-.0387200	.0796058	1.000	-.304635	.227195
TPA	Kontrol/Tanpa Perlakuan	.0896000	.0796058	1.000	-.176315	.355515
	TPA + Base Cream	-.0307800	.0796058	1.000	-.296695	.235135
	TPA + GM 2.5%	.0424200	.0796058	1.000	-.223495	.308335
	TPA + GM 5%	.0395000	.0796058	1.000	-.226415	.305415
	TPA + GM 10%	.0094200	.0796058	1.000	-.256495	.275335
	TPA + GM 20%	.0508800	.0796058	1.000	-.215035	.316795
TPA + Base Cream	Kontrol/Tanpa Perlakuan	.1203800	.0796058	1.000	-.145535	.386295
	TPA	.0307800	.0796058	1.000	-.235135	.296695
	TPA + GM 2.5%	.0732000	.0796058	1.000	-.192715	.339115
	TPA + GM 5%	.0702800	.0796058	1.000	-.195635	.336195
	TPA + GM 10%	.0402000	.0796058	1.000	-.225715	.306115
	TPA + GM 20%	.0816600	.0796058	1.000	-.184255	.347575
TPA + GM 2.5%	Kontrol/Tanpa Perlakuan	.0471800	.0796058	1.000	-.218735	.313095
	TPA	-.0424200	.0796058	1.000	-.308335	.223495
	TPA + Base Cream	-.0732000	.0796058	1.000	-.339115	.192715
	TPA + GM 5%	-.0029200	.0796058	1.000	-.268835	.262995
	TPA + GM 10%	-.0330000	.0796058	1.000	-.298915	.232915
	TPA + GM 20%	.0084600	.0796058	1.000	-.257455	.274375
TPA + GM 5%	Kontrol/Tanpa Perlakuan	.0501000	.0796058	1.000	-.215815	.316015



		TPA	-.0395000	.0796058	1.000	-.305415	.226415
		TPA + Base Cream	-.0702800	.0796058	1.000	-.336195	.195635
		TPA + GM 2.5%	.0029200	.0796058	1.000	-.262995	.268835
		TPA + GM 10%	-.0300800	.0796058	1.000	-.295995	.235835
		TPA + GM 20%	.0113800	.0796058	1.000	-.254535	.277295
	TPA + GM 10%	Kontrol/Tanpa Perlakuan	.0801800	.0796058	1.000	-.185735	.346095
		TPA	-.0094200	.0796058	1.000	-.275335	.256495
		TPA + Base Cream	-.0402000	.0796058	1.000	-.306115	.225715
		TPA + GM 2.5%	.0330000	.0796058	1.000	-.232915	.298915
		TPA + GM 5%	.0300800	.0796058	1.000	-.235835	.295995
		TPA + GM 20%	.0414600	.0796058	1.000	-.224455	.307375
	TPA + GM 20%	Kontrol/Tanpa Perlakuan	.0387200	.0796058	1.000	-.227195	.304635
		TPA	-.0508800	.0796058	1.000	-.316795	.215035
		TPA + Base Cream	-.0816600	.0796058	1.000	-.347575	.184255
		TPA + GM 2.5%	-.0084600	.0796058	1.000	-.274375	.257455
		TPA + GM 5%	-.0113800	.0796058	1.000	-.277295	.254535
		TPA + GM 10%	-.0414600	.0796058	1.000	-.307375	.224455
Tamhane	Kontrol/Tanpa Perlakuan	TPA	-.0896000	.0805076	1.000	-.515740	.336540
		TPA + Base Cream	-.1203800	.1096587	1.000	-.762526	.521766
		TPA + GM 2.5%	-.0471800	.0622897	1.000	-.343496	.249136
		TPA + GM 5%	-.0501000	.0476929	1.000	-.258252	.158052



	TPA + GM 10%	-.0801800	.0334470	.763	-.281367	.121007
	TPA + GM 20%	-.0387200	.0400629	1.000	-.219481	.142041
TPA	Kontrol/Tanpa Perlakuan	.0896000	.0805076	1.000	-.336540	.515740
	TPA + Base Cream	-.0307800	.1281581	1.000	-.615185	.553625
	TPA + GM 2.5%	.0424200	.0909915	1.000	-.369899	.454739
	TPA + GM 5%	.0395000	.0816949	1.000	-.380982	.459982
	TPA + GM 10%	.0094200	.0742843	1.000	-.482530	.501370
	TPA + GM 20%	.0508800	.0774887	1.000	-.397862	.499622
TPA + Base Cream	Kontrol/Tanpa Perlakuan	.1203800	.1096587	1.000	-.521766	.762526
	TPA	.0307800	.1281581	1.000	-.553625	.615185
	TPA + GM 2.5%	.0732000	.1175713	1.000	-.518829	.665229
	TPA + GM 5%	.0702800	.1105334	1.000	-.563203	.703763
	TPA + GM 10%	.0402000	.1051747	1.000	-.665669	.746069
	TPA + GM 20%	.0816600	.1074619	1.000	-.587149	.750469
TPA + GM 2.5%	Kontrol/Tanpa Perlakuan	.0471800	.0622897	1.000	-.249136	.343496
	TPA	-.0424200	.0909915	1.000	-.454739	.369899
	TPA + Base Cream	-.0732000	.1175713	1.000	-.665229	.518829
	TPA + GM 5%	-.0029200	.0638168	1.000	-.299004	.293164
	TPA + GM 10%	-.0330000	.0540063	1.000	-.382486	.316486
	TPA + GM 20%	.0084600	.0583354	1.000	-.298431	.315351



TPA + GM 5%		Kontrol/Tanpa Perlakuan	.0501000	.0476929	1.000	-.158052	.258252	
		TPA	-.0395000	.0816949	1.000	-.459982	.380982	
		TPA + Base Cream	-.0702800	.1105334	1.000	-.703763	.563203	
		TPA + GM 2.5%	.0029200	.0638168	1.000	-.293164	.299004	
		TPA + GM 10%	-.0300800	.0362117	1.000	-.251549	.191389	
		TPA + GM 20%	.0113800	.0423984	1.000	-.183966	.206726	
TPA + GM 10%		Kontrol/Tanpa Perlakuan	.0801800	.0334470	.763	-.121007	.281367	
		TPA	-.0094200	.0742843	1.000	-.501370	.482530	
		TPA + Base Cream	-.0402000	.1051747	1.000	-.746069	.665669	
		TPA + GM 2.5%	.0330000	.0540063	1.000	-.316486	.382486	
		TPA + GM 5%	.0300800	.0362117	1.000	-.191389	.251549	
		TPA + GM 20%	.0414600	.0253321	.975	-.099642	.182562	
TPA + GM 20%		Kontrol/Tanpa Perlakuan	.0387200	.0400629	1.000	-.142041	.219481	
		TPA	-.0508800	.0774887	1.000	-.499622	.397862	
		TPA + Base Cream	-.0816600	.1074619	1.000	-.750469	.587149	
		TPA + GM 2.5%	-.0084600	.0583354	1.000	-.315351	.298431	
		TPA + GM 5%	-.0113800	.0423984	1.000	-.206726	.183966	
		TPA + GM 10%	-.0414600	.0253321	.975	-.182562	.099642	
Infiltrasi	Bonferroni	Kontrol/Tanpa Perlakuan	TPA	-2.000*	.321	.000	-3.07	-.93
Netrofil		Perlakuan	TPA + Base Cream	-2.400*	.321	.000	-3.47	-1.33



	TPA + GM 2.5%	-1.400*	.321	.003	-2.47	-.33
	TPA + GM 5%	-1.000	.321	.088	-2.07	.07
	TPA + GM 10%	.000	.321	1.000	-1.07	1.07
	TPA + GM 20%	.200	.321	1.000	-.87	1.27
TPA	Kontrol/Tanpa Perlakuan	2.000*	.321	.000	.93	3.07
	TPA + Base Cream	-.400	.321	1.000	-1.47	.67
	TPA + GM 2.5%	.600	.321	1.000	-.47	1.67
	TPA + GM 5%	1.000	.321	.088	-.07	2.07
	TPA + GM 10%	2.000*	.321	.000	.93	3.07
	TPA + GM 20%	2.200*	.321	.000	1.13	3.27
TPA + Base Cream	Kontrol/Tanpa Perlakuan	2.400*	.321	.000	1.33	3.47
	TPA	.400	.321	1.000	-.67	1.47
	TPA + GM 2.5%	1.000	.321	.088	-.07	2.07
	TPA + GM 5%	1.400*	.321	.003	.33	2.47
	TPA + GM 10%	2.400*	.321	.000	1.33	3.47
	TPA + GM 20%	2.600*	.321	.000	1.53	3.67
TPA + GM 2.5%	Kontrol/Tanpa Perlakuan	1.400*	.321	.003	.33	2.47
	TPA	-.600	.321	1.000	-1.67	.47
	TPA + Base Cream	-1.000	.321	.088	-2.07	.07
	TPA + GM 5%	.400	.321	1.000	-.67	1.47



	TPA + GM 10%	1.400*	.321	.003	.33	2.47
	TPA + GM 20%	1.600*	.321	.001	.53	2.67
TPA + GM 5%	Kontrol/Tanpa Perlakuan	1.000	.321	.088	-.07	2.07
	TPA	-1.000	.321	.088	-2.07	.07
	TPA + Base Cream	-1.400*	.321	.003	-2.47	-.33
	TPA + GM 2.5%	-.400	.321	1.000	-1.47	.67
	TPA + GM 10%	1.000	.321	.088	-.07	2.07
	TPA + GM 20%	1.200*	.321	.018	.13	2.27
TPA + GM 10%	Kontrol/Tanpa Perlakuan	.000	.321	1.000	-1.07	1.07
	TPA	-2.000*	.321	.000	-3.07	-.93
	TPA + Base Cream	-2.400*	.321	.000	-3.47	-1.33
	TPA + GM 2.5%	-1.400*	.321	.003	-2.47	-.33
	TPA + GM 5%	-1.000	.321	.088	-2.07	.07
	TPA + GM 20%	.200	.321	1.000	-.87	1.27
TPA + GM 20%	Kontrol/Tanpa Perlakuan	-.200	.321	1.000	-1.27	.87
	TPA	-2.200*	.321	.000	-3.27	-1.13
	TPA + Base Cream	-2.600*	.321	.000	-3.67	-1.53
	TPA + GM 2.5%	-1.600*	.321	.001	-2.67	-.53
	TPA + GM 5%	-1.200*	.321	.018	-2.27	-.13
	TPA + GM 10%	-.200	.321	1.000	-1.27	.87



Tamhane	Kontrol/Tanpa Perlakuan	TPA	-2.000*	.346	.009	-3.51	-.49
		TPA + Base Cream	-2.400*	.316	.002	-3.80	-1.00
		TPA + GM 2.5%	-1.400*	.316	.050	-2.80	.00
		TPA + GM 5%	-1.000	.346	.350	-2.51	.51
		TPA + GM 10%	.000	.346	1.000	-1.51	1.51
		TPA + GM 20%	.200	.316	1.000	-1.20	1.60
		TPA	Kontrol/Tanpa Perlakuan	2.000*	.346	.009	.49
	TPA + Base Cream	TPA + Base Cream	-400	.316	.997	-1.80	1.00
		TPA + GM 2.5%	.600	.316	.879	-.80	2.00
		TPA + GM 5%	1.000	.346	.350	-.51	2.51
		TPA + GM 10%	2.000*	.346	.009	.49	3.51
		TPA + GM 20%	2.200*	.316	.003	.80	3.60
		Kontrol/Tanpa Perlakuan	2.400*	.316	.002	1.00	3.80
	TPA + GM 2.5%	TPA	.400	.316	.997	-1.00	1.80
		TPA + GM 2.5%	1.000	.283	.149	-.23	2.23
		TPA + GM 5%	1.400*	.316	.050	.00	2.80
		TPA + GM 10%	2.400*	.316	.002	1.00	3.80
		TPA + GM 20%	2.600*	.283	.000	1.37	3.83
		Kontrol/Tanpa Perlakuan	1.400*	.316	.050	.00	2.80
	TPA		-600	.316	.879	-2.00	.80



	TPA + Base Cream	-1.000	.283	.149	-2.23	.23
	TPA + GM 5%	.400	.316	.997	-1.00	1.80
	TPA + GM 10%	1.400*	.316	.050	.00	2.80
	TPA + GM 20%	1.600*	.283	.010	.37	2.83
TPA + GM 5%	Kontrol/Tanpa Perlakuan	1.000	.346	.350	-.51	2.51
	TPA	-1.000	.346	.350	-2.51	.51
	TPA + Base Cream	-1.400*	.316	.050	-2.80	.00
	TPA + GM 2.5%	-.400	.316	.997	-1.80	1.00
	TPA + GM 10%	1.000	.346	.350	-.51	2.51
	TPA + GM 20%	1.200	.316	.113	-.20	2.60
TPA + GM 10%	Kontrol/Tanpa Perlakuan	.000	.346	1.000	-1.51	1.51
	TPA	-2.000*	.346	.009	-3.51	-.49
	TPA + Base Cream	-2.400*	.316	.002	-3.80	-1.00
	TPA + GM 2.5%	-1.400*	.316	.050	-2.80	.00
	TPA + GM 5%	-1.000	.346	.350	-2.51	.51
	TPA + GM 20%	.200	.316	1.000	-1.20	1.60
TPA + GM 20%	Kontrol/Tanpa Perlakuan	-.200	.316	1.000	-1.60	1.20
	TPA	-2.200*	.316	.003	-3.60	-.80
	TPA + Base Cream	-2.600*	.283	.000	-3.83	-1.37
	TPA + GM 2.5%	-1.600*	.283	.010	-2.83	-.37



			TPA + GM 5%	-1.200	.316	.113	-2.60	.20
			TPA + GM 10%	-.200	.316	1.000	-1.60	1.20
Ketebalan Epidermis	Bonferroni	Kontrol/Tanpa Perlakuan	TPA	-	17.24691	.125	-	6.27539
				51.33620	5	108.9477	9	
			TPA + Base Cream	-	17.24691	.000	-	-41.62441
				99.23600	5	156.8475	9	
			TPA + GM 2.5%	-8.259200	17.24691	1.000	-65.87079	49.35239
				11.42260	5	46.18899	0	
			TPA + GM 10%	-6.423400	17.24691	1.000	-64.03499	51.18819
				11.02020	5	46.59139	0	
			TPA + GM 20%	-	17.24691	1.000	-68.63179	46.59139
				51.33620	5	108.9477	9	
TPA	Kontrol/Tanpa Perlakuan	TPA	-	17.24691	.125	-6.27539	108.9477	
			47.89980	5	105.5113	9		
		TPA + Base Cream	-	17.24691	.203	-	9.71179	
			43.07700	5	100.6885	9		
		TPA + GM 2.5%	43.07700	17.24691	.392	-14.53459	100.6885	
			39.91360	5	97.52519	0		
		TPA + GM 5%	39.91360	17.24691	.592	-17.69799	97.52519	
			44.91280	5	102.5243	9		
		TPA + GM 10%	44.91280	17.24691	.306	-12.69879	102.5243	
			40.31600	5	97.92759	0		
TPA + GM 20%	40.31600	17.24691	.562	-17.29559	97.92759			
TPA + Base Cream	Kontrol/Tanpa Perlakuan	TPA + Base Cream	99.23600	17.24691	.000	41.62441	156.8475	
			47.89980	5	105.5113	9		
	TPA	47.89980	17.24691	.203	-9.71179	105.5113		
			0	5		9		



	TPA + GM	90.97680	17.24691	.000	33.36521	148.5883
	2.5%	0*	5			9
	TPA + GM 5%	87.81340	17.24691	.000	30.20181	145.4249
		0*	5			9
	TPA + GM	92.81260	17.24691	.000	35.20101	150.4241
	10%	0*	5			9
	TPA + GM	88.21580	17.24691	.000	30.60421	145.8273
	20%	0*	5			9
TPA + GM	Kontrol/Tanpa	8.259200	17.24691	1.000	-49.35239	65.87079
2.5%	Perlakuan		5			
	TPA	-	17.24691	.392	-	14.53459
		43.07700	5		100.6885	
		0			9	
	TPA + Base	-	17.24691	.000	-	-33.36521
	Cream	90.97680	5		148.5883	
		0*			9	
	TPA + GM 5%	-3.163400	17.24691	1.000	-60.77499	54.44819
			5			
	TPA + GM	1.835800	17.24691	1.000	-55.77579	59.44739
	10%		5			
	TPA + GM	-2.761000	17.24691	1.000	-60.37259	54.85059
	20%		5			
TPA + GM 5%	Kontrol/Tanpa	11.42260	17.24691	1.000	-46.18899	69.03419
	Perlakuan	0	5			
	TPA	-	17.24691	.592	-97.52519	17.69799
		39.91360	5			
		0				
	TPA + Base	-	17.24691	.000	-	-30.20181
	Cream	87.81340	5		145.4249	
		0*			9	
	TPA + GM	3.163400	17.24691	1.000	-54.44819	60.77499
	2.5%		5			
	TPA + GM	4.999200	17.24691	1.000	-52.61239	62.61079
	10%		5			
	TPA + GM	.402400	17.24691	1.000	-57.20919	58.01399
	20%		5			



TPA + GM 10%	Kontrol/Tanpa Perlakuan	6.423400	17.24691 5	1.000	-51.18819	64.03499	
	TPA	- 44.91280 0	17.24691 5	.306	- 102.5243 9	12.69879	
	TPA + Base Cream	- 92.81260 0*	17.24691 5	.000	- 150.4241 9	-35.20101	
	TPA + GM 2.5%	-1.835800	17.24691 5	1.000	-59.44739	55.77579	
	TPA + GM 5%	-4.999200	17.24691 5	1.000	-62.61079	52.61239	
	TPA + GM 20%	-4.596800	17.24691 5	1.000	-62.20839	53.01479	
	TPA + GM 20%	Kontrol/Tanpa Perlakuan	11.02020 0	17.24691 5	1.000	-46.59139	68.63179
TPA		- 40.31600 0	17.24691 5	.562	-97.92759	17.29559	
TPA + Base Cream		- 88.21580 0*	17.24691 5	.000	- 145.8273 9	-30.60421	
TPA + GM 2.5%		2.761000	17.24691 5	1.000	-54.85059	60.37259	
TPA + GM 5%		-.402400	17.24691 5	1.000	-58.01399	57.20919	
TPA + GM 10%		4.596800	17.24691 5	1.000	-53.01479	62.20839	
Tamhane		Kontrol/Tanpa Perlakuan	TPA	- 51.33620 0	24.24816 9	.827	- 175.1513 3
	TPA + Base Cream	- 99.23600 0*	17.67313 4	.014	- 178.5895 1	-19.88249	
	TPA + GM 2.5%	-8.259200	15.74835 9	1.000	-77.01288	60.49448	



	TPA + GM 5%	- 11.42260 0	11.72289 0	1.000	-72.22372	49.37852
	TPA + GM 10%	-6.423400	13.52453 6	1.000	-66.62139	53.77459
	TPA + GM 20%	- 11.02020 0	11.71542 5	1.000	-71.85502	49.81462
TPA	Kontrol/Tanpa Perlakuan	51.33620 0	24.24816 9	.827	-72.47893	175.1513 3
	TPA + Base Cream	- 47.89980 0	25.96894 4	.910	- 168.9756 2	73.17602
	TPA + GM 2.5%	43.07700 0	24.69933 6	.947	-79.33594	165.4899 4
	TPA + GM 5%	39.91360 0	22.34888 2	.960	-99.14689	178.9740 9
	TPA + GM 10%	44.91280 0	23.34436 7	.915	-83.83590	173.6615 0
	TPA + GM 20%	40.31600 0	22.34496 8	.957	-98.79907	179.4310 7
TPA + Base Cream	Kontrol/Tanpa Perlakuan	99.23600 0*	17.67313 4	.014	19.88249	178.5895 1
	TPA	47.89980 0	25.96894 4	.910	-73.17602	168.9756 2
	TPA + GM 2.5%	90.97680 0*	18.28724 0	.025	10.18759	171.7660 1
	TPA + GM 5%	87.81340 0*	14.96123 3	.043	3.09231	172.5344 9
	TPA + GM 10%	92.81260 0*	16.41113 8	.021	14.20498	171.4202 2
	TPA + GM 20%	88.21580 0*	14.95538 5	.042	3.44356	172.9880 4
TPA + GM 2.5%	Kontrol/Tanpa Perlakuan	8.259200	15.74835 9	1.000	-60.49448	77.01288



	TPA	-	24.69933	.947	-	79.33594
		43.07700	6		165.4899	
		0			4	
	TPA + Base Cream	-	18.28724	.025	-	-10.18759
		90.97680	0		171.7660	
		0*			1	
	TPA + GM 5%	-3.163400	12.62971	1.000	-70.60925	64.28245
			2			
	TPA + GM 10%	1.835800	14.31770	1.000	-63.10024	66.77184
			1			
	TPA + GM 20%	-2.761000	12.62278	1.000	-70.24749	64.72549
			4			
TPA + GM 5%	Kontrol/Tanpa Perlakuan	11.42260	11.72289	1.000	-49.37852	72.22372
		0	0			
	TPA	-	22.34888	.960	-	99.14689
		39.91360	2		178.9740	
		0			9	
	TPA + Base Cream	-	14.96123	.043	-	-3.09231
		87.81340	3		172.5344	
		0*			9	
	TPA + GM 2.5%	3.163400	12.62971	1.000	-64.28245	70.60925
			2			
	TPA + GM 10%	4.999200	9.716580	1.000	-41.56570	51.56410
	TPA + GM 20%	.402400	6.982122	1.000	-29.98216	30.78696
TPA + GM 10%	Kontrol/Tanpa Perlakuan	6.423400	13.52453	1.000	-53.77459	66.62139
			6			
	TPA	-	23.34436	.915	-	83.83590
		44.91280	7		173.6615	
		0			0	
	TPA + Base Cream	-	16.41113	.021	-	-14.20498
		92.81260	8		171.4202	
		0*			2	
	TPA + GM 2.5%	-1.835800	14.31770	1.000	-66.77184	63.10024
			1			



	TPA + GM 5%	-4.999200	9.716580	1.000	-51.56410	41.56570
	TPA + GM 20%	-4.596800	9.707573	1.000	-51.17118	41.97758
TPA + GM 20%	Kontrol/Tanpa Perlakuan	11.02020	11.71542	1.000	-49.81462	71.85502
	TPA	- 40.31600	22.34496	.957	- 179.4310	98.79907
		0	8		7	
	TPA + Base Cream	- 88.21580	14.95538	.042	- 172.9880	-3.44356
		0*	5		4	
	TPA + GM 2.5%	2.761000	12.62278	1.000	-64.72549	70.24749
			4			
	TPA + GM 5%	-.402400	6.982122	1.000	-30.78696	29.98216
	TPA + GM 10%	4.596800	9.707573	1.000	-41.97758	51.17118

*. The mean difference is significant at the 0.05 level.

26. Uji Independent Sample T-Test kadar COX-2

	Kontrol	TPA	TPA+BC	TPA+GM 2,5%	TPA+GM 5%	TPA+GM 10%	TPA+GM 20%
Kontrol		0.298	0.304	0.471	0.324	0.043	0.362
TPA			0.816	0.471	0.324	0.043	0.362
TPA+BC				0.551	0.543	0.712	0.469
TPA+GM 2,5%					0.965	0.558	0.888
TPA+GM 5%						0.430	0.795
TPA+GM 10%							0.140
TPA+GM 20%							

27. Uji Mann-Whitney Infiltrasi Netrofil



	Kontrol	TPA	TPA+BC	TPA+GM 2,5%	TPA+GM 5%	TPA+GM 10%	TPA+GM 20%
Kontrol		0,007	0,006	0,011	0,031	1,000	0,513
TPA			0,221	0,093	0,031	0,007	0,006
TPA+BC				0,015	0,011	0,006	0,005
TPA+GM 2,5%					0,221	0,011	0,007
TPA+GM 5%						0,031	0,014
TPA+GM 10%							0,513
TPA+GM 20%							

28. Uji Independent Sample T-Test Ketebalan Epidermis

	Kontrol	TPA	TPA+BC	TPA+GM 2,5%	TPA+GM 5%	TPA+GM 10%	TPA+GM 20%
Kontrol		0.067	0.001	0.614	0.358	0.648	0.374
TPA			0.102	0.614	0.358	0.648	0.374
TPA+BC				0.001	0.000	0.000	0.000
TPA+GM 2,5%					0.809	0.901	0.832
TPA+GM 5%						0.621	0.905
TPA+GM 10%							0.648
TPA+GM 20%							



29. Uji crosstab edema

Crosstab

Count

		Kelompok								
		Kontrol/Tanpa Perlakuan	TPA	TPA + Base Cream	TPA + GM					
					2.5%	5%	10%	20%		
Edema	Ada	0	5	5	5	5	5	5	5	30
	Tidak Ada	5	0	0	0	0	0	0	0	5
Total		5	5	5	5	5	5	5	5	35

30. Uji *Chi-Square* edema

Chi-Square Tests

	Value	df	Asymptotic Significance (2-sided)
Pearson Chi-Square	35.000 ^a	6	.000
Likelihood Ratio	28.708	6	.000
Linear-by-Linear Association	12.750	1	.000
N of Valid Cases	35		

a. 14 cells (100,0%) have expected count less than 5. The minimum expected count is ,71.



31. Uji crosstab permeabilitas vaskular

Crosstab

Count

		Kelompok							Total
		Kontrol/Tanpa Perlakuan		TPA + Base Cream	TPA + GM 2.5%	TPA + GM 5%	TPA + GM 10%	TPA + GM 20%	
		TPA							
Permeabilitas Vaskular	Ada	0	5	5	5	5	5	5	30
	Tidak Ada	5	0	0	0	0	0	0	5
Total		5	5	5	5	5	5	5	35

32. Uji *Chi-Square* permeabilitas vaskular

Chi-Square Tests

	Value	df	Asymptotic Significance (2-sided)
Pearson Chi-Square	35.000 ^a	6	.000
Likelihood Ratio	28.708	6	.000
Linear-by-Linear Association	12.750	1	.000
N of Valid Cases	35		

a. 14 cells (100,0%) have expected count less than 5. The minimum expected count is ,71.

